

# Invest

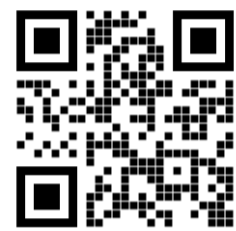
A Weekly e-Publication by [SHAREINVESTOR.com](http://SHAREINVESTOR.com)

ISSUE

123

FRIDAY  
09 SEPTEMBER  
2022

Scan/Click QR to Register



Via email, every Friday

## HEALTHIER OUTLOOK SEEN FOR CONSTRUCTION INDUSTRY - KENANGA RESEARCH

(page 26)

- |    |                            |    |                    |    |                          |
|----|----------------------------|----|--------------------|----|--------------------------|
| 03 | LEADERBOARD                | 14 | VALUE STOCKS       | 29 | REGIONAL MARKETS         |
| 05 | SHARIAH HOT STOCKS         | 16 | GROWTH STOCKS      | 30 | BEHIND THE ACTION        |
| 06 | COMPANY SPOTLIGHT          | 18 | DIVIDEND STOCKS    | 33 | FROM THE OBSERVER        |
| 08 | SHARIAH MOMENTUM UP STOCKS | 19 | BROKERS' CALL      | 37 | INSIDER ACTIVITY         |
| 10 | NON SHARIAH HOT STOCKS     | 20 | LONG COMPANIES     | 40 | INVESTOR RELATIONS       |
| 12 | UP TRENDING STOCKS         | 22 | INVESTOR EDUCATION | 43 | CAREERS AT SHAREINVESTOR |
|    |                            | 26 | MARKET SENTIMENTS  |    |                          |



**SHAREINVESTOR®**

Invest with Knowledge

#### CORPORATE

Managing Director (Malaysia) & Publisher  
Edward Stanislaus  
edward@shareinvestor.com

#### SALES & MARKETING

Director  
Elizabeth Tan  
elizabeth.tan@shareinvestor.com

#### Online IR

Manager  
Letticia Wong  
letticia.wong@shareinvestor.com

#### Advertising & Sponsorship Sales

Manager  
Sharon Lee  
sharon.lee@shareinvestor.com

#### MARKET DATA ANALYTICS

(marketdata.my@shareinvestor.com)  
Account Manager  
Heidee Ahmad  
heidee.ahmad@shareinvestor.com  
Coordinator  
Watie Nordin  
watie.nordin@shareinvestor.com

#### MARKET DATA ANALYTICS & EDITORIAL

Market Data & Media Coordinator  
Silas Emmanuel Joseph  
silas.joseph@shareinvestor.com

#### MARKET DATA ANALYTICS & EDITORIAL

Market Data Analyst  
Nickson Aw  
nickson.aw@shareinvestor.com

#### MARKETING COMMUNICATIONS

Marcomm Manager  
Danny Ng

#### CREATIVE & DESIGN

Manager		Andric See
Asst. Manager		Ivy Yap
Web Developer		Nurul Atiqah Aiman Jasmin Izwan Rusli

#### IT APPS

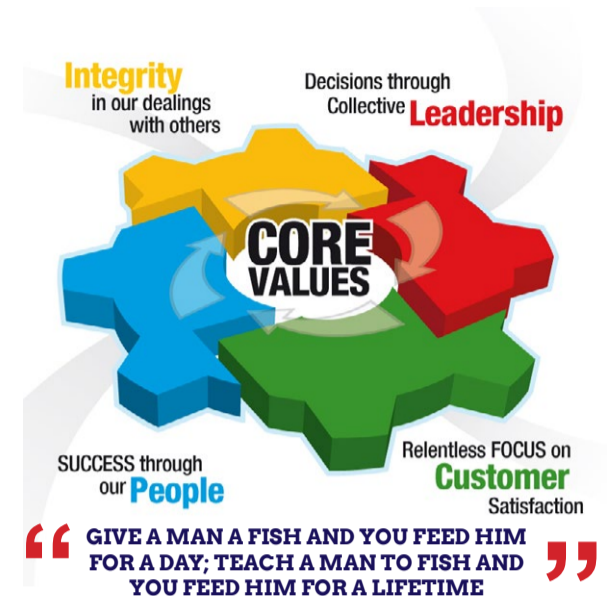
Project Manager		Amir Yusoff
Sr. Software Engineer		Mohd. Qasem
Software Engineer		Lian Kok Keong

#### FINANCE, ADMIN & HR

Manager		Shireen Goh
Sn. Accounts Executive		Jessie Ho
Accounts Assistant		Ng Jin Yng

#### SHAREINVESTOR HOLDINGS

Chairman		Patrick Daniel
Group CEO		Christopher Lee
Group COO		Lim Dau Hee
Group CFO		Teo Siew May



**ShareInvestor Malaysia Sdn. Bhd.** (200001023956) (526564-M)  
(Formerly known as SI Portal.com Sdn. Bhd.)  
Unit No. DF2-07-03A, Level 7,  
Persoft Tower, 6B Persiaran Tropicana,  
47410 Petaling Jaya, Selangor Darul Ehsan.

Hotline : 603 7803 1791  
Mobile : 011 6343 8939  
Fax : 603 7803 1792

Website : [www.ShareInvestor.com.my](http://www.ShareInvestor.com.my)  
[www.ShareInvestorHoldings.com](http://www.ShareInvestorHoldings.com)  
[www.Facebook.com/ShareInvestorMalaysia](https://www.Facebook.com/ShareInvestorMalaysia)

**ADVERTISEMENT ENQUIRY**

# XTRA

A true icon lasts.  
A true icon evolves.

Since 2002, **Okamura Contessa** has set the standard for seating in office spaces around the world.

Contessa unites the flowing, organic lines and charm of the original with new engineering and functionality. With more color options for the mesh, fabric, and frame. All to meet the demands of the modern work style.

Contessa is the evolution of an icon – for the workplace of today, and of tomorrow.



**OKAMURA**



**ITALDESIGN**



[www.shareinvestor.com](http://www.shareinvestor.com) - market data at your fingertips



ShareInvestor WebPro ([www.shareinvestor.com/my](http://www.shareinvestor.com/my))  
Prices > Stock Prices > Bursa > click Stocks tab

1. mouse over Ranking > select Top Active > all Shariah stocks are denoted with an [S] > mouse over Column Layout > select Edit Customs > select Name > select Volume > select Last Done Price > Mouse Over Column Layout > select Custom
2. mouse over Ranking > select Top Turnover > all Shariah stocks are denoted with an [S] > mouse over Column Layout > select Edit Customs > select Name > select Last Done Price > select Value > Mouse Over Column Layout > select Custom
3. mouse over Ranking > select Top Gainers (Over 5 Trading Days) > mouse over Column Layout > select Edit Customs > select Name > select Last Done Price > select 5 Days Change > select 5 Days % Change > Mouse Over Column Layout > select Custom
4. mouse over Ranking > select Top Losers (Over 5 Trading Days)
5. mouse over Ranking > select Top % Gainers (Over 5 Trading Days)
6. mouse over Ranking > select Top % Losers (Over 5 Trading Days)

### Shariah Top Actives (as at Yesterday)

Name	Price (RM)	Volume
MTRONIC [S]	0.045	3,399,080
SNS [S]	0.260	920,498
CNERGEN [S]	0.910	428,918
MYEG [S]	0.850	354,554
TWL [S]	0.050	352,954
LGMS [S]	1.300	338,666
HIBISCS [S]	0.980	334,511
CENGILD [S]	0.530	306,113
TOPGLOV [S]	0.795	288,554
DNEX [S]	0.820	258,701

### Shariah Top Turnover (as at Yesterday)

Name	Price (RM)	Value (RM)
PCHEM [S]	8.950	78,857,542
PMETAL [S]	5.020	68,493,377
LGMS [S]	1.300	44,308,053
GAMUDA [S]	3.980	43,694,657
CNERGEN [S]	0.910	39,743,413
IHH [S]	6.220	34,534,848
SFPTECH [S]	1.380	34,004,790
HIBISCS [S]	0.980	32,573,851
TM [S]	5.900	31,555,928
MYEG [S]	0.850	30,309,228

### Top Gainers (over 5 Trading days as at Yesterday)

Name	Price (RM)	Change (RM)
UTDPLT	15.200	+0.440
PERSTIM	4.660	+0.390
SAM	4.690	+0.390
PMBTECH	3.950	+0.350
PMETAL	5.020	+0.320
AJI	11.980	+0.300
AORB	2.600	+0.300
F&N	22.260	+0.260
PETDAG	21.880	+0.240
UWC	4.100	+0.240

### Top % Gainers (over 5 Trading days as at Yesterday)

Name	Price (RM)	Change (%)
S&FCAP	0.100	+66.67
SYSCORP	0.780	+31.09
GDB	0.190	+26.67
HBGLOB	0.135	+22.73
LGMS	1.300	+21.50
EMETALL	0.695	+20.87
UMC	0.750	+20.00
ORGABIO	0.335	+19.64
CSCENIC	1.190	+19.00
CNASIA	0.265	+17.78

### Top Losers (over 5 Trading days as at Yesterday)

Name	Price (RM)	Change (RM)
PANAMY	25.800	-0.900
HENGYUAN	4.520	-0.720
MPI	29.300	-0.700
PPB	16.780	-0.480
PETRONM	4.750	-0.350
SMI	0.170	-0.340
BKAWAN	22.760	-0.240
HLFG	19.140	-0.220
CARLSBG	23.100	-0.200
HEIM	23.900	-0.180

### Top % Losers (over 5 Trading days as at Yesterday)

Name	Price (RM)	Change (%)
SMI	0.170	-66.67
VSOLAR	0.005	-50.00
MTRONIC	0.045	-40.00
GOCEAN	0.010	-33.33
MERIDIAN	0.020	-33.33
DESTINI	0.070	-30.00
DOLMITE	0.015	-25.00
SCOMIES	0.015	-25.00
XOX	0.015	-25.00
BCMALL	0.020	-20.00

# PURNELL

O N L Y T O U R B I L L O N



## ESCAPE II FORGED CARBON

Purnell Asia

Tel. : +65.9817.3378

Email : sales.sg@purnellwatches.com

@ Purnell\_Official

[www.purnellwatches.com](http://www.purnellwatches.com)

PLAY



## Price & Volume Distribution Charts (as at Yesterday)

Technical Analysis

**DEFINITION:** Shariah compliant stocks with Technical Analysis showing 5-days & 10-days Moving Average Price below Yesterday's Close over past 3 days and with Volume Spike.

**CHART GUIDE:** Volume Distribution Chart is a statistical interpretation of the current sentiment on each stock in graphical format. The highest bar categorized as >150k is likely to be traded by institutions or super dealers, while the lowest bar categorized as <15k usually represents retail investors. "Buy Up" refers to more buyers snatching up the lots queued at selling price. "Sell Down" refers to sellers selling their shares to the buying queue



ShareInvestor WebPro > Screener > Market Screener (FA & TA) > select BURSA > add criteria

**A. Criteria**

- > click Add Criteria
- Technical Analysis Conditions tab select (i) Moving Average Below Close (ii) Volume Spike
- Fundamental Analysis Conditions tab > select (iii) Revenue
- Prices & Other Conditions tab > select (iv) Is Shariah Compliant
- Technical Analysis Conditions tab select (v) Moving Average Below Close
- Prices & Other Conditions tab > select (vi) Last Done Price
- Technical Analysis Conditions tab select (vii) Moving Average Below Close

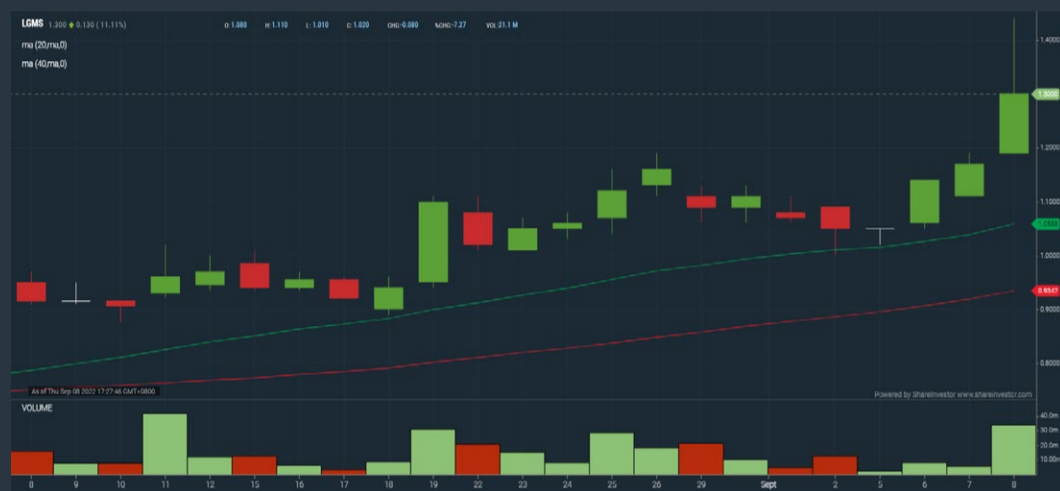
**B. Conditions (Criteria Filters)**

1. Moving Average Below Close - select (MA) type (5) below close price for type (3) days
2. Volume Spike - Volume type (1) greater than type (5) days average
3. Revenue ("000) - select (more than) type (1) for the past select (1) financial year(s)
4. Is Shariah Compliant - select **Yes**
5. Moving Average Below Close - select (MA) type (10) below close price for type (3) days
6. Last Done Price - select (more than) type (0.3)
7. Moving Average Below Close - select (EMA) type (5) below close price for type (3) days

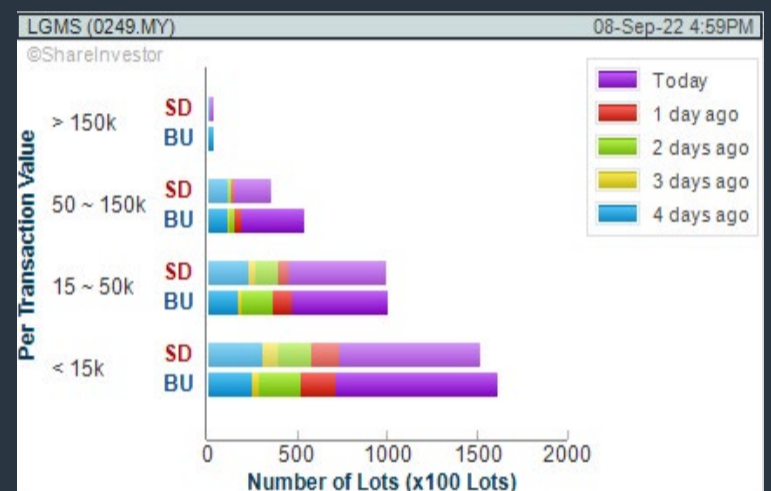
- > click Save Template > Create New Template type (Shariah Hot Stocks) > click Create
- > click Save Template as > select Shariah Hot Stocks > click Save
- > click Screen Now (may take a few minutes)
- > Sort By: Select (Vol) Select (Desc)
- > Mouse over stock name > Charts > click C<sup>2</sup> Charts or Volume Distribution

### LGMS BERHAD (0249)

C<sup>2</sup> Chart

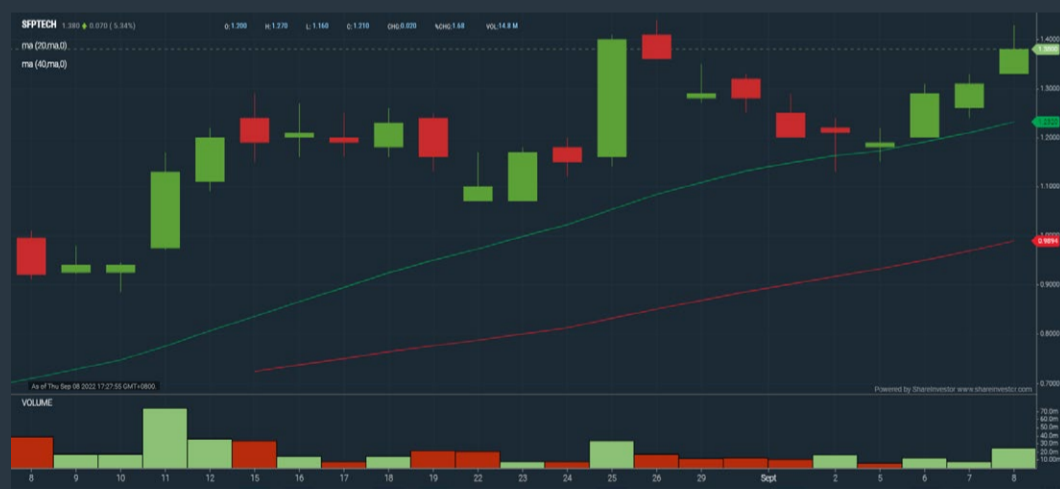


Analysis

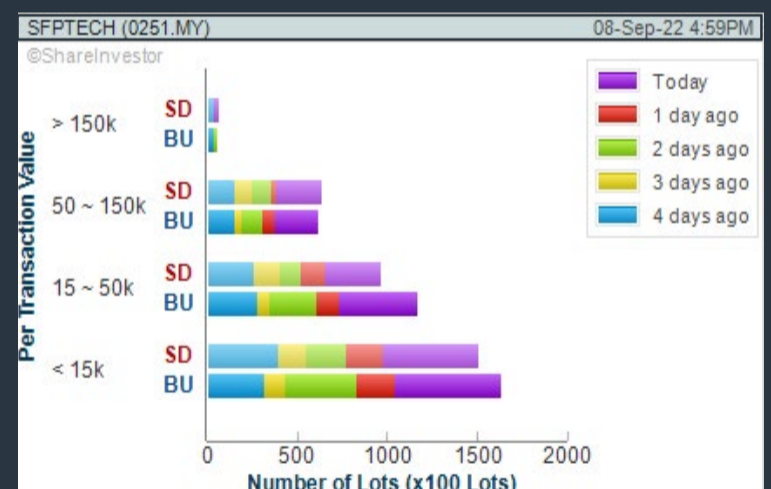


### SFP TECH HOLDINGS BERHAD (0251)

C<sup>2</sup> Chart



Analysis

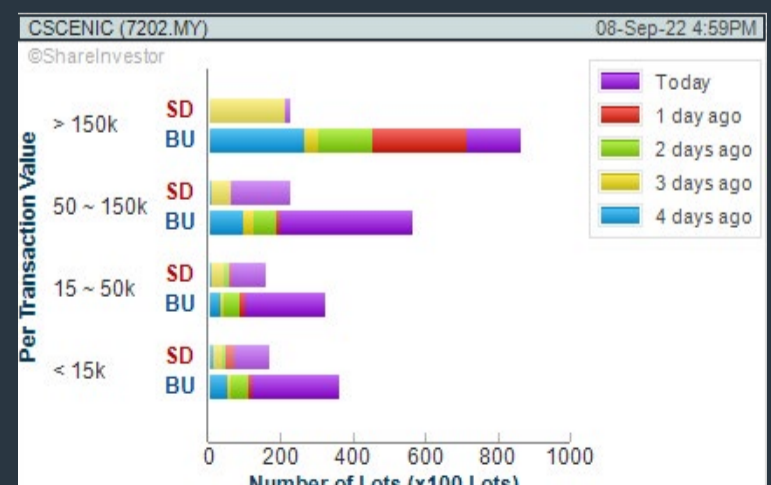


### CLASSIC SCENIC BERHAD (7202)

C<sup>2</sup> Chart



Analysis



**Disclaimer:** The information on this page is provided as a service to readers. It does not constitute financial advice and/or any investment recommendations. Past performance is not indicative of future results. We assume no liability for damages resulting from or arising out of the use of such information. It would be best if you did your own research to make your personal investment decisions wisely or consult a licenced investment advisor.

## COMPANY BACKGROUND

**LGMS Berhad** provides independent cybersecurity services. It is primarily involved in cybersecurity assessment, penetration testing, cyber risk management, compliance and consultancy. Cyber risk prevention services include pre-empting cyber-attacks through assessment and penetration testing, identifying vulnerabilities, cyber threats, and compliance. The company also conducts training for information security and IT professionals.



Select Counter: Bursa LGMS (0249.MY) View

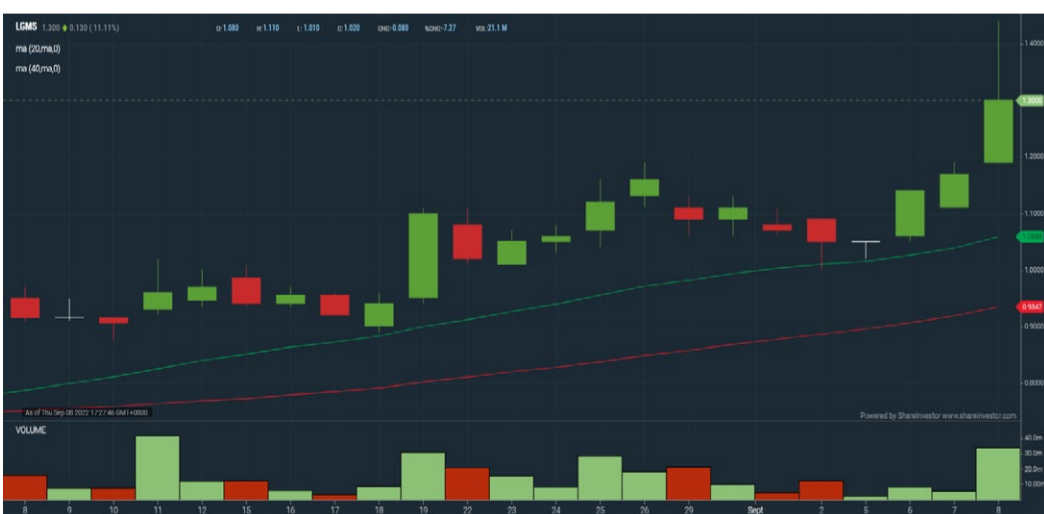
**LGMS LGMS BERHAD** Updated at 08 Sep 2022 16:59

Last (MYR): <b>1.300</b> ↑	Change: <b>+0.130</b>	High: <b>1.440</b>	Remarks: -
	Change (%): <b>+11.11</b>	Low: <b>1.190</b>	
Open	1.190	Yesterday's Close	1.170
Buy Price	1.290	Sell Price	1.300
Buy Volume ('00)	559	Sell Volume ('00)	18,464
Cumulative Volume ('00)	338,666	Cumulative Value	44,308,053

### Financial Analysis

<b>Revenue Growth</b> Increasing revenue in last 3 consecutive years	😊	<b>Profit Growth</b> Increasing profit in last 3 consecutive years (with at least 4 profitable years)	😊
<b>Piotroski F Score</b> The company has strong financial strength (Piotroski F-Score of 8-9)	😊	<b>Cash Ratio</b> Good cash ratio of at least 0.8 for 3 consecutive years	😊
<b>Current Ratio</b> The company is well-positioned to cover its short-term obligations with its current assets (ratio between 1.5 to 10) for 3 consecutive years	😊	<b>Gross Profit Margin</b> Consistently high gross profit margin of at least 40% for 3 years	😊
<b>Net Earnings Margin</b> Consistently high net profit margin of at least 20% for 3 years	😊	<b>Return on Assets (ROA)</b> ROA above 20% for 3 consecutive years	😊
<b>Return on Equity (ROE)</b> ROE above 20% for 3 consecutive years	😊		

😊 Excellent    😊 Good    😐 Neutral    ⚠️ Be Alert    🚨 Watch Out



### Historical Financials



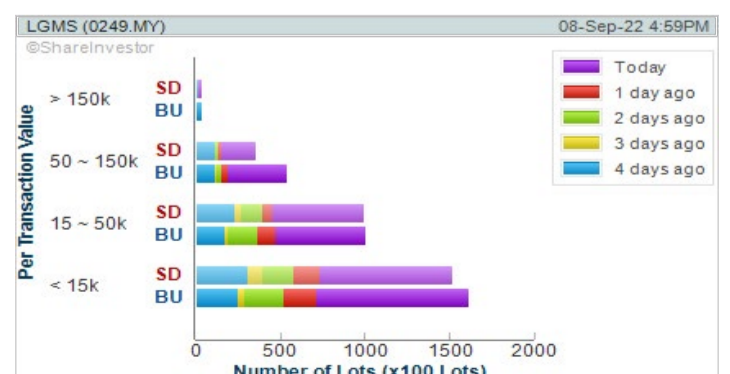
**WebPro 9-Days Free Trial Registration (worth RM9) Sign Up Now**



### Key Statistics with Total Shareholder Returns

#### Total Shareholder Return

Period	Dividend Received	Capital Appreciation	Total Shareholder Return
Short Term Return	5 Days	-	+0.190
	10 Days	-	+0.240
	20 Days	-	+0.395
Medium Term Return	3 Months	-	+0.455



**Disclaimer:** The information on this page is provided as a service to readers. It does not constitute financial advice and/or any investment recommendations. Past performance is not indicative of future results. We assume no liability for damages resulting from or arising out of the use of such information. It would be best if you did your own research to make your personal investment decisions wisely or consult a licenced investment advisor.



**Maintenance  
SERVICES.**

---

**Fabrication  
OPERATIONS.**

---

**Hook Up &  
COMMISSIONING.**

---

**Charter of  
MARINE VESSELS.**

---

**Transportation &  
INSTALLATION.**

---

[www.desb.net](http://www.desb.net) | [www.perdana.my](http://www.perdana.my)

## Price & Volume Distribution Charts (as at Yesterday)

Technical Analysis

**DEFINITION:** Shariah compliant stocks with Technical Analysis showing Bullish Momentum and Price Uptrend. The share price closed at the highest price yesterday. The typical price was higher than the previous day's typical price.

**CHART GUIDE:** Volume Distribution Chart is a statistical interpretation of the current sentiment on each stock in graphical format. The highest bar categorized as >150k is likely to be traded by institutions or super dealers, while the lowest bar categorized as <15k usually represents retail investors. "Buy Up" refers to more buyers snatching up the lots queued at selling price. "Sell Down" refers to sellers selling their shares to the buying queue.



ShareInvestor WebPro > Screener > Market Screener (FA & TA)>select BURSA>add criteria

**A. Criteria**

- > click Add Criteria
- Fundamental Analysis Conditions tab >select (i) Revenue
- Technical Analysis Conditions tab select (ii) Average Volume
- Prices & Other Conditions tab > select (iii) Last Done Price
- Prices & Other Conditions tab > select (iv) Is Shariah Compliant
- Technical Analysis Conditions tab select (v) RSI Overbought
- Technical Analysis Conditions tab select (vi) Moving Average Below Close
- Technical Analysis Conditions tab select (vii) CCI Overbought

**B. Conditions (Criteria Filters)**

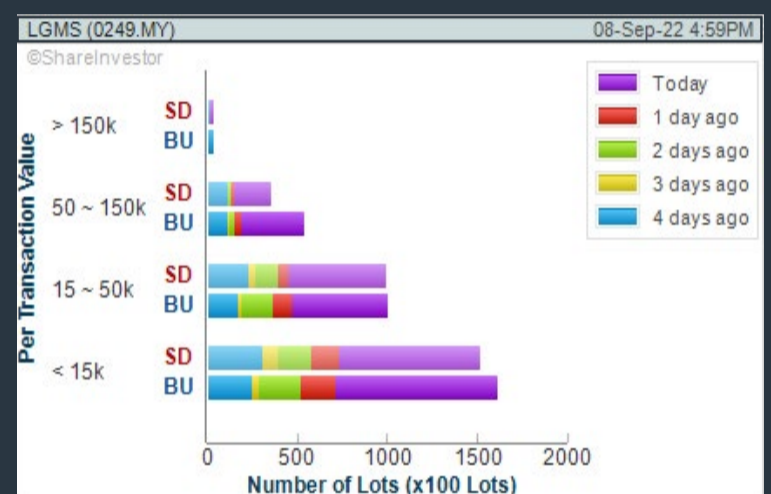
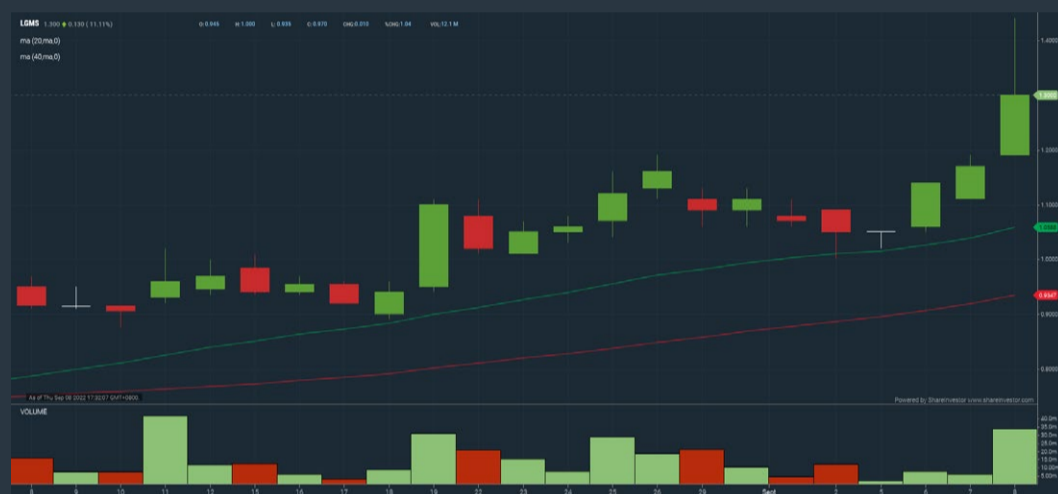
1. Revenue ("000) - select (more than) type (1) for the past select (1) financial year(s)
2. Average Volume - type (1) days average volume greater than type (10000) lots
3. Last Done Price - select (more than) type (0.3)
4. Is Shariah Compliant - select Yes
5. RSI Overbought - select RSI 1 above 99 for 1 days
6. Moving Average Below Close - select (MA) type (10) below close price for type (1) days
7. CCI Overbought - select CCI (2) above (0) for (1) days

- > click Save Template > Create New Template type (Shariah Momentum Up Stocks) > click Create
- > click Save Template as > select Shariah Momentum Up Stocks > click Save
- > click Screen Now (may take a few minutes)
- Sort By: Select (Vol) Select (Desc)
- Mouse over stock name > Charts > click C<sup>2</sup> Charts tab or Volume Distribution

### LGMS BERHAD (0249)

C<sup>2</sup> Chart

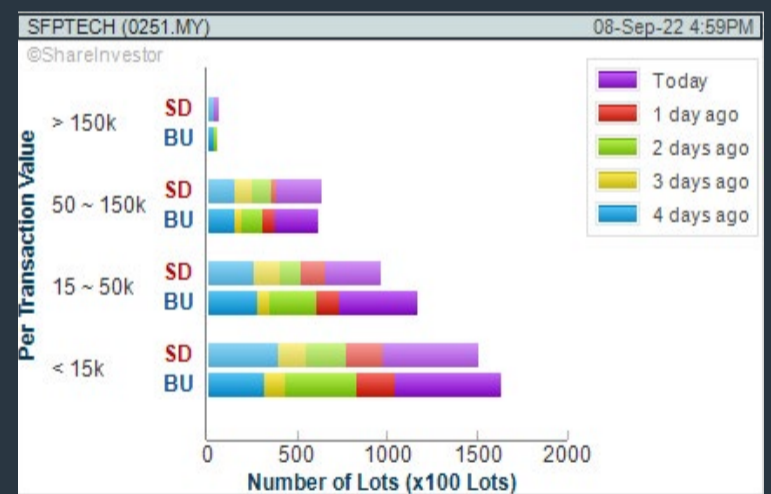
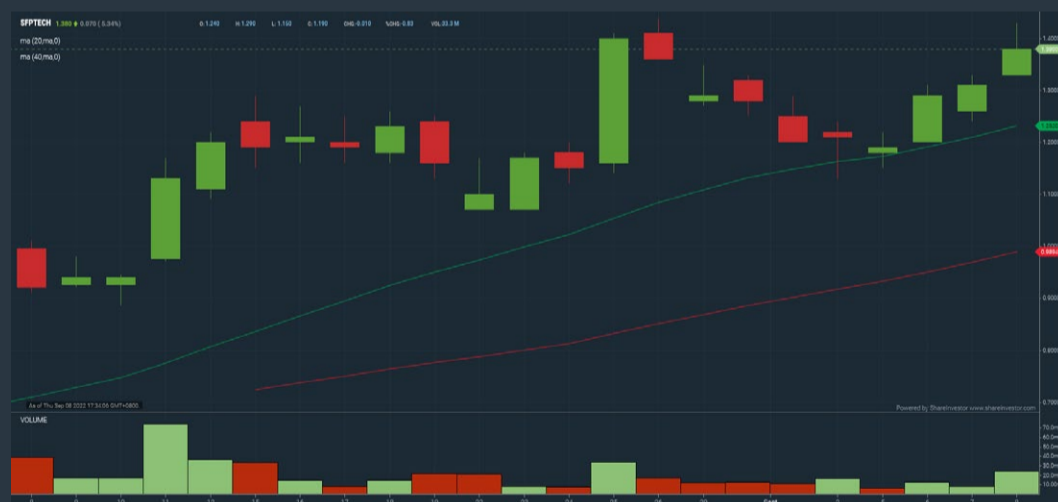
Analysis



### SFP TECH HOLDINGS BERHAD (0251)

C<sup>2</sup> Chart

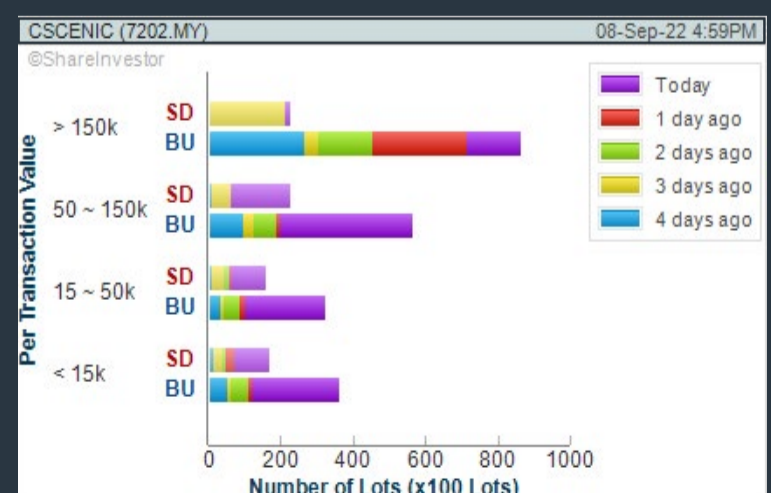
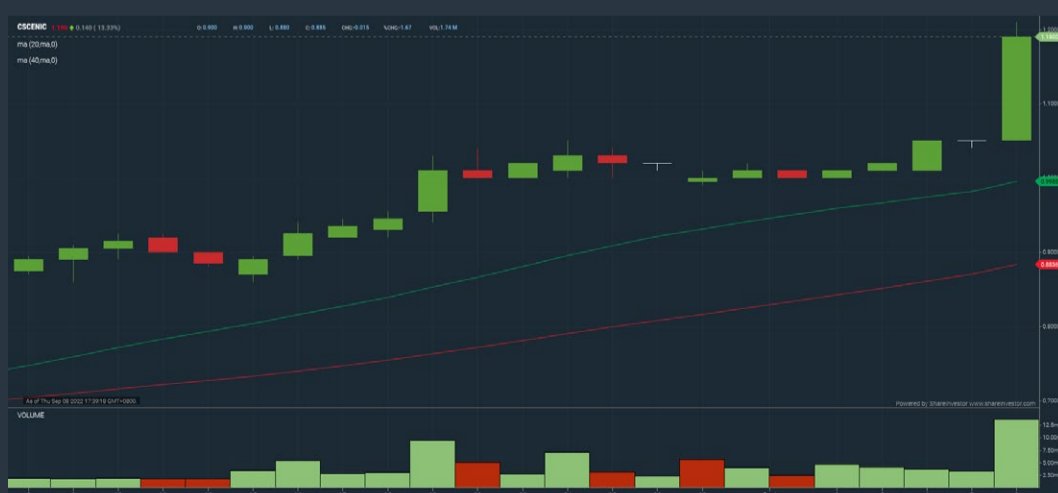
Analysis



### CLASSIC SCENIC BERHAD (7202)

C<sup>2</sup> Chart

Analysis



**Disclaimer:** The information on this page is provided as a service to readers. It does not constitute financial advice and/or any investment recommendations. Past performance is not indicative of future results. We assume no liability for damages resulting from or arising out of the use of such information. It would be best if you did your own research to make your personal investment decisions wisely or consult a licenced investment advisor.



**Webinar Percuma**

# Melabur Saham IPO

Sept 12 | Isnin | 8:30pm

28 saham baru telah disenaraikan di Bursa Malaysia setakat ini dan 9 lagi bakal akan disenaraikan tahun ini.

Adakah anda berminat untuk melabur saham-saham IPO? Jangan lepaskan peluang untuk belajar teknik melabur saham IPO bersama Tn. Faizal Yusup dan Tn. Zuhri Zain.

Webinar percuma ini adalah anjuran bersama ShareInvestor Malaysia dan Althea Quant.

## Topik Pembelajaran

- Apa itu IPO?
- Kenapa syarikat terbitkan IPO?
- Struktur IPO dulu dan kini
- Kajian prestasi IPO terkini
- Senarai saham IPO 2022



TUAN  
ZUHRI ZAIN

TUAN  
FAIZAL YUSUP

[Daftar Sekarang](#)

## Price & Volume Distribution Charts (as at Yesterday)

Technical Analysis

**DEFINITION:** Stocks with Technical Analysis showing 5-days & 10-days Moving Average Price below Close over past 1 days and with Volume Spike

**CHART GUIDE:** Volume Distribution Chart is a statistical interpretation of the current sentiment on each stock in graphical format. The highest bar categorized as >150k is likely to be traded by institutions or super dealers, while the lowest bar categorized as <15k usually represents retail investors. "Buy Up" refers to more buyers snatching up the lots queued at selling price. "Sell Down" refers to sellers selling their shares to the buying queue.



ShareInvestor WebPro > Screener > Market Screener (FA & TA) > select BURSA > add criteria

**A. Criteria**

- > click Add Criteria
- Technical Analysis Conditions tab select (i) Moving Average Below Close (ii) Volume Spike
- Fundamental Analysis Conditions tab >select (iii) Revenue
- Prices & Other Conditions tab > select (iv) Is Shariah Compliant
- Technical Analysis Conditions tab select (v) Moving Average Below Close
- Prices & Other Conditions tab > select (vi) Last Done Price
- Technical Analysis Conditions tab select (vii) Moving Average Below Close

**B. Conditions (Criteria Filters)**

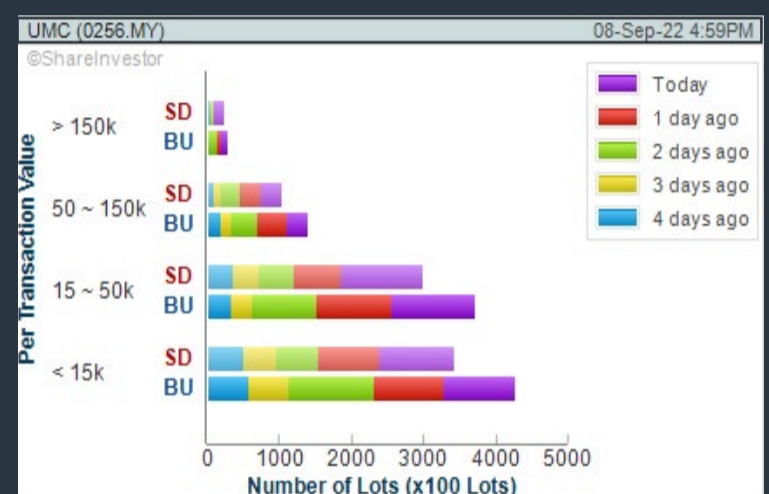
1. Moving Average Below Close - select (MA) type (5) below close price for type (3) days
2. Volume Spike - Volume type (1) greater than type (5) days average
3. Revenue ("000) - select (more than) type (1) for the past select (1) financial year(s)
4. Is Shariah Compliant - select NO
5. Moving Average Below Close - select (MA) type (10) below close price for type (1) days
6. Last Done Price - select (more than) type (0.3)
7. Moving Average Below Close - select (EMA) type (5) below close price for type (1) days

- > click Save Template > Create New Template type (Non-Shariah Hot Stocks) > click Create
- > click Save Template as > select Non-Shariah Hot Stocks > click Save
- > click Screen Now (may take a few minutes)
- Sort By: Select (Vol) Select (Desc)
- Mouse over stock name > Charts > click C<sup>2</sup> Charts tab or Volume Distribution

### UMEDIC GROUP BERHAD (0256)

C<sup>2</sup> Chart

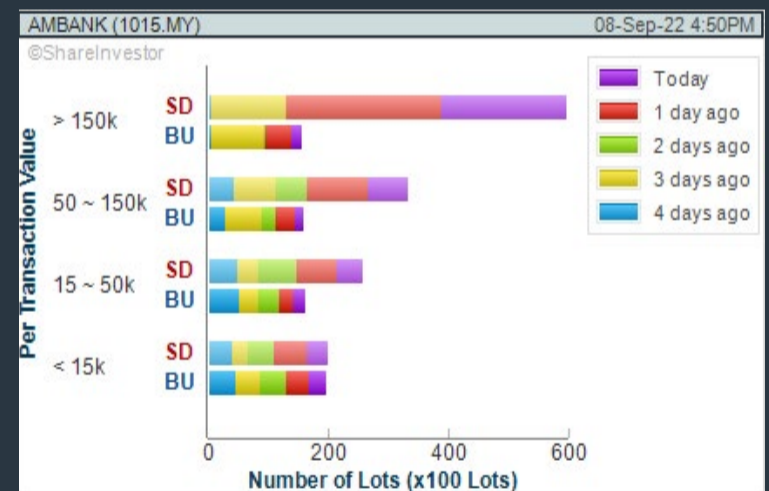
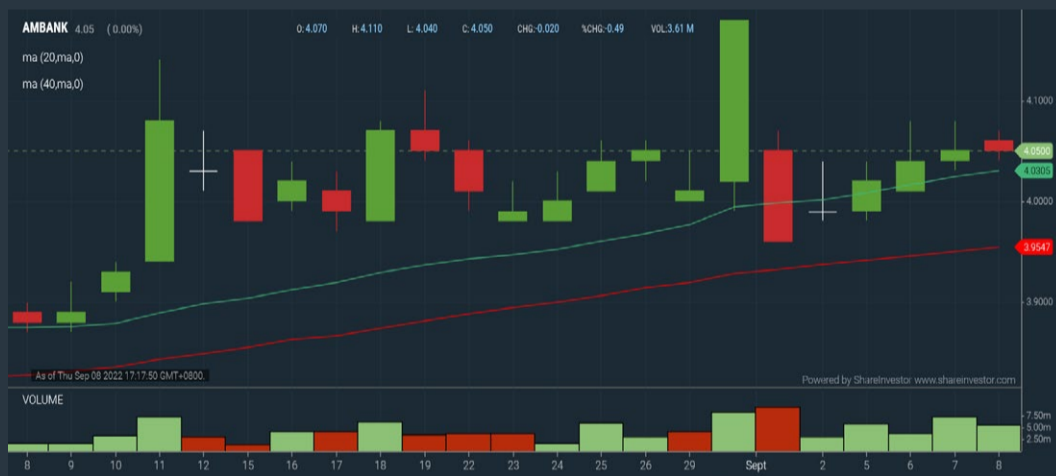
Analysis



### AMMB HOLDINGS BERHAD (1015)

C<sup>2</sup> Chart

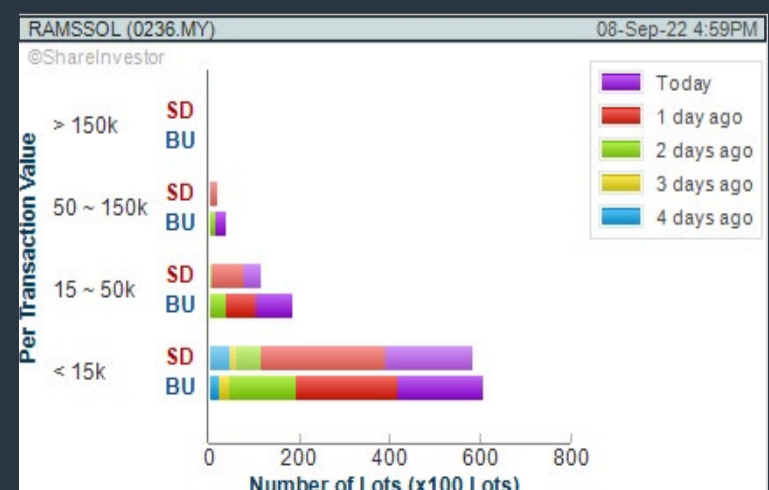
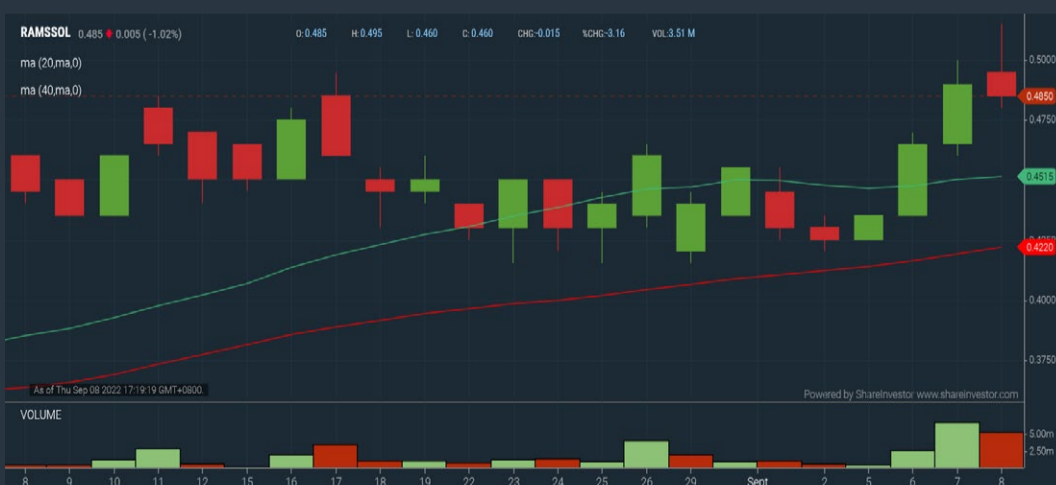
Analysis



### RAMSSOL GROUP BERHAD (0236)

C<sup>2</sup> Chart

Analysis



**Disclaimer:** The information on this page is provided as a service to readers. It does not constitute financial advice and/or any investment recommendations. Past performance is not indicative of future results. We assume no liability for damages resulting from or arising out of the use of such information. It would be best if you did your own research to make your personal investment decisions wisely or consult a licenced investment advisor.



SHAREINVESTOR  
WEBPRO 

# MERDEKA KAW KAW PROMOTION

22 August 2022 – 30 September 2022

ENJOY **31%** OFF

*when you Subscribe, Renew or Extend*

Coupon Code

**MYMERDEKA22**

**SUBSCRIBE NOW**

Valid for 12 months subscriptions only

## Price & Volume Distribution Charts (Over 5 trading days as at Yesterday)

Technical Analysis

**DEFINITION:** Stocks with Technical Analysis showing Bullish Momentum and Price Uptrend

**CHART GUIDE:** Volume Distribution Chart is a statistical interpretation of the current sentiment on each stock in graphical format. The highest bar categorized as >150k is likely to be traded by institutions or super dealers, while the lowest bar categorized as <15k usually represents retail investors. "Buy Up" refers to more buyers snatching up the lots queued at selling price. "Sell Down" refers to sellers selling their shares to the buying queue.



ShareInvestor WebPro > Screener > Market Screener (FA & TA) > select BURSA > add criteria

**A. Criteria**

- > click Add Criteria
- Fundamental Analysis Conditions tab > select (i) Revenue
- Technical Analysis Conditions tab select (ii) Moving Average Below Close
- Technical Analysis Conditions tab select (iii) Average Volume
- Prices & Other Conditions tab > select (iv) Last Done Price
- Technical Analysis Conditions tab select (v) Moving Average Below Close
- Technical Analysis Conditions tab select (v) Moving Average Bullish Crossover

**B. Conditions**

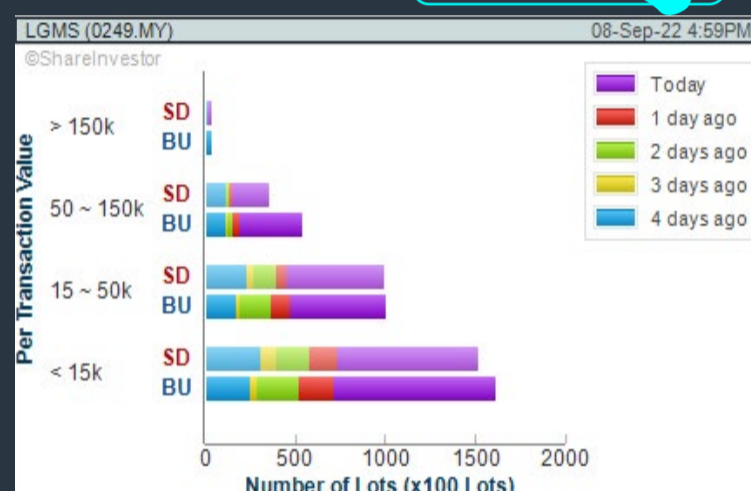
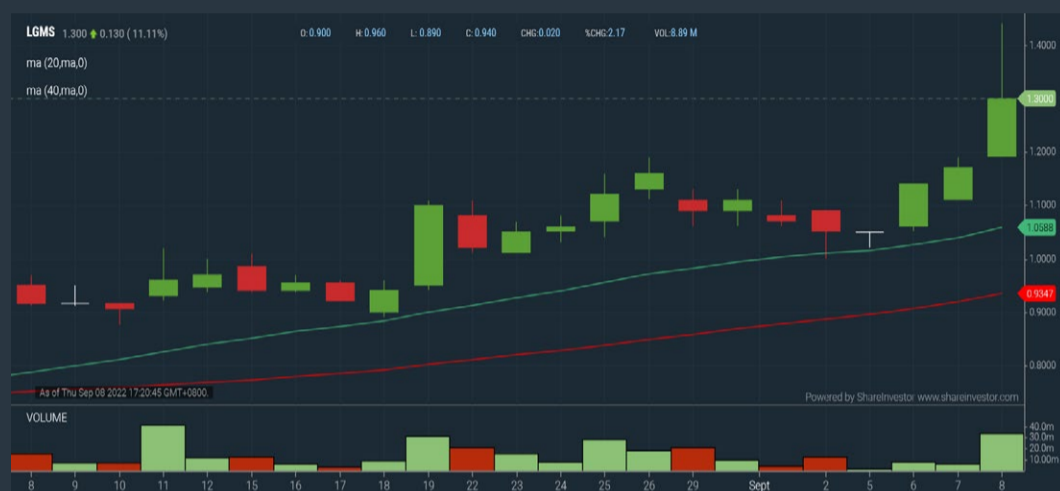
1. Revenue - select (more than) type (1) for the past select (1) financial year(s)
2. Moving Average Below Close - select (MA) type (20) below close price for type (1) days
3. Average Volume - type (5) days average volume type (10000) lots
4. Last Done Price - select (more than) type (0.3)
5. Moving Average Below Close - select (MA) type (10) below close price for type (1) days
6. Moving Average Bullish Crossover - select (MA) type (5) crossed above select (MA) type (10)

> click Save Template > Create New Template type (Non-Shariah Up-Trending Stocks) > click Create Click Save Template As > select Non-Shariah Up Trending Stocks > click Save > click Screen Now (may take a few minutes) Sort By: Select (Vol) Select (Desc) Mouse over stock name > Charts > click C<sup>2</sup> Charts tab or Volume Distribution

### LGMS BERHAD (0249)

C<sup>2</sup> Chart

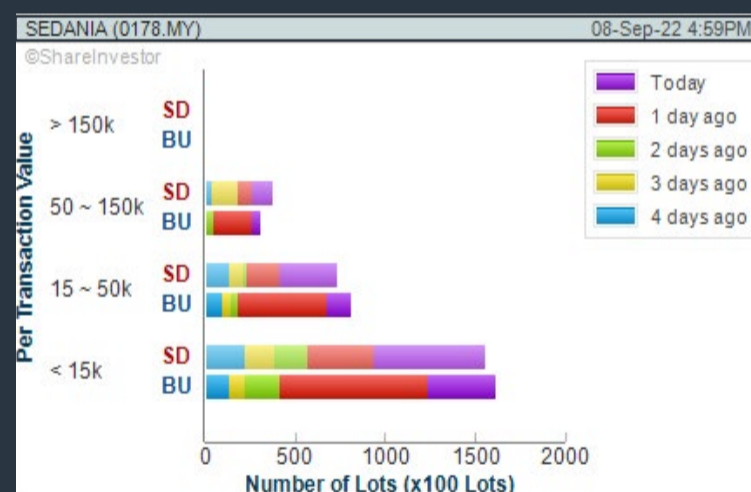
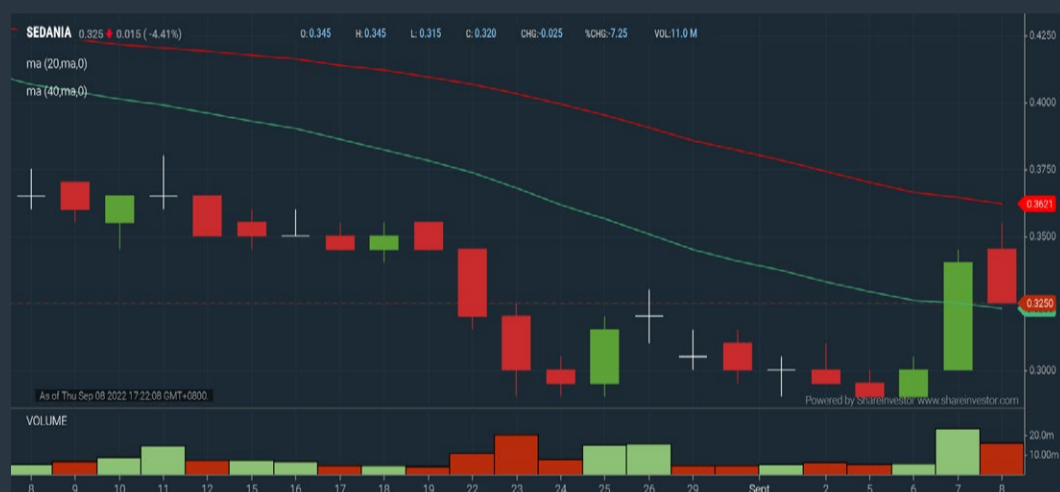
Analysis



### SEDANIA INNOVATOR BERHAD (0178)

C<sup>2</sup> Chart

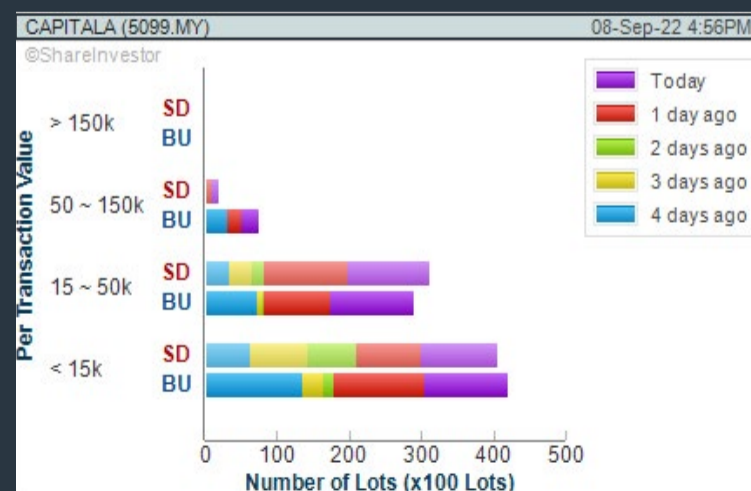
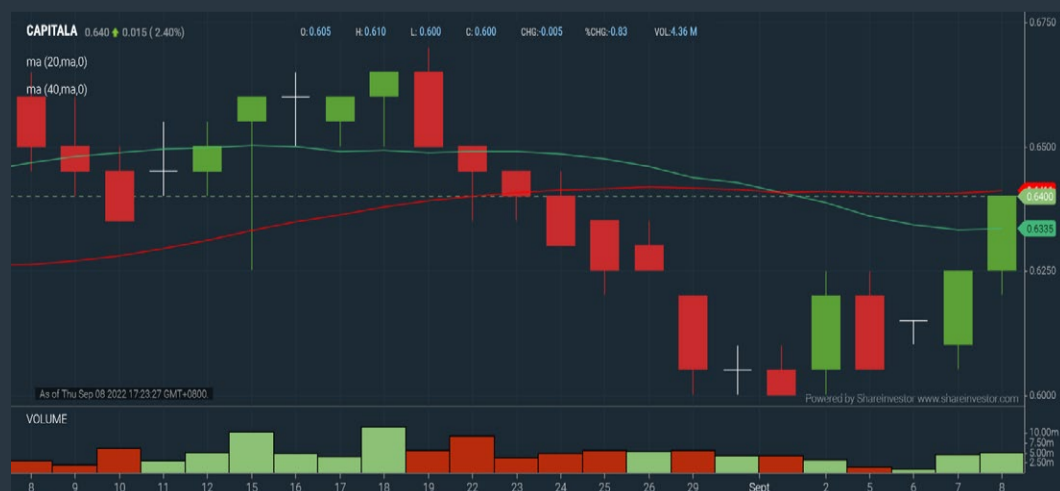
Analysis



### CAPITAL A BERHAD (5099)

C<sup>2</sup> Chart

Analysis



**Disclaimer:** The information on this page is provided as a service to readers. It does not constitute financial advice and/or any investment recommendations. Past performance is not indicative of future results. We assume no liability for damages resulting from or arising out of the use of such information. It would be best if you did your own research to make your personal investment decisions wisely or consult a licenced investment advisor.



# Italian Masterpieces

Coupé De Luxe bed designed by GamFratesi  
Grant ottoman designed by Tristan Auer

poltronafrau.com



# XTRA

The Gardens Mall, Mid Valley City, Lot S-236 & 237  
2nd flr Linkaran Syed Putra, Kuala Lumpur  
T. +603 2282 9088 | living@xfurniture.com | xfurniture.com  
f XTRAfurniture | @xfurnituremsia



## Price & Total Shareholder Return (as at Yesterday)

Fundamental Analysis

**DEFINITION:** Share price of a company trading at a lower price as compared to its fundamentals (FA) such as financial performance and dividend, allowing it to be attractive to value investors.

**CHART GUIDE:** Total Shareholder Return (TSR) combines share price appreciation and dividend distributions paid to show the total return to the shareholder expressed as a percentage.



ShareInvestor WebPro > Screener > Market Screener (FA & TA) > select BURSA > add criteria

**A. Criteria**

- > click Add Criteria
- Fundamental Analysis Conditions tab (i) Price Earnings Ratio
- Fundamental Analysis Conditions tab >select (ii) CAGR of Net Earnings
- Fundamental Analysis Conditions tab >select (iii) Net Debt To Equity
- Fundamental Analysis Conditions tab >select (iv) Return On Equity (ROE)

**B. Conditions**

1. Price Earnings Ratio - select (less than) type (15) times now
2. CAGR of Net Earnings - select (more than) type (10) % for the past type (3) financial year(s)
3. Net Debt To Equity – select (less than) type (1) for the past select (1) financial year(s)
4. Return On Equity (ROE) – select (more than) type (10) % for the past select (1) financial year(s)

- > click Save Template > Create New Template type (Value Stock) > click Create
- > click Save Template as > select Value Companies > click Save
- > click Screen Now (may take a few minutes)
- > Mouse over stock name > Factsheet > looking for Total Shareholder Return
- > Mouse over stock name > Charts > click C2 Charts tab

## THREE-A RESOURCES BERHAD (0012)

C<sup>2</sup> Chart



Analysis

Period	Dividend Received	Capital Appreciation	Total Shareholder Return
Short Term Return	5 Days	-	+3.91 %
	10 Days	+0.065	+7.51 %
	20 Days	+0.070	+8.14 %
Medium Term Return	3 Months	+0.045	+5.08 %
	6 Months	+0.025	+2.76 %
	1 Year	0.030	+4.01 %
Long Term Return	2 Years	+0.136	+23.68 %
	3 Years	0.072	+20.14 %
	5 Years	0.110	-14.75 %
Annualised Return	Annualised	-	-3.14 %

## AGESON BERHAD (7145)

C<sup>2</sup> Chart



Analysis

Period	Dividend Received	Capital Appreciation	Total Shareholder Return
Short Term Return	5 Days	-0.120	-24.49 %
	10 Days	-0.115	-23.71 %
	20 Days	-0.185	-33.33 %
Medium Term Return	3 Months	+0.170	+85.00 %
	6 Months	0.066	-15.14 %
	1 Year	-1.010	-73.19 %
Long Term Return	2 Years	-1.518	-80.40 %
	3 Years	-1.663	-81.80 %
	5 Years	-1.736	-82.43 %
Annualised Return	Annualised	-	-29.38 %

## ANCOM NYLEX BERHAD (4758)

C<sup>2</sup> Chart



Analysis

Period	Dividend Received	Capital Appreciation	Total Shareholder Return
Short Term Return	5 Days	+0.015	+1.61 %
	10 Days	+0.010	+1.07 %
	20 Days	+0.015	+1.61 %
Medium Term Return	3 Months	-0.125	-11.68 %
	6 Months	-0.322	-25.41 %
	1 Year	+0.442	+87.87 %
Long Term Return	2 Years	+0.665	+237.50 %
	3 Years	+0.797	+538.51 %
	5 Years	+0.737	+354.33 %
Annualised Return	Annualised	-	+35.35 %

**Disclaimer:** The information on this page is provided as a service to readers. It does not constitute financial advice and/or any investment recommendations. Past performance is not indicative of future results. We assume no liability for damages resulting from or arising out of the use of such information. It would be best if you did your own research to make your personal investment decisions wisely or consult a licenced investment advisor.

SHARE**INVESTOR**  
**STATION**

**MERDEKA  
KAW KAW  
PROMOTION**

22 August 2022 – 30 September 2022

ENJOY **31%** OFF

*when you Subscribe, Renew or Extend*

Coupon Code

**MYMERDEKA22**

**SUBSCRIBE NOW**

Valid for 12 months subscriptions only

## Price & Total Shareholder Return (as at Yesterday)

Fundamental Analysis

**DEFINITION:** Company revenue is growing and making good quality of earnings with positive Free Cash Flow.

**CHART GUIDE:** Total Shareholder Return (TSR) combines share price appreciation and distributions paid to show the total return to the shareholder expressed as a percentage.



ShareInvestor WebPro > Screener > Market Screener (FA & TA) > select BURSA > add criteria

**A. Criteria**

1. Fundamental Analysis Conditions tab >select (i) Free Cash Flow, (ii) Revenue Growth, (iii) Gross Profit (Earnings) Margin, (iv) Quality of Earnings, (v) Total Shareholder Returns, > click Add Criteria
2. Fundamental Analysis Conditions tab >select (vi) Total Shareholder Returns > click Add Criteria

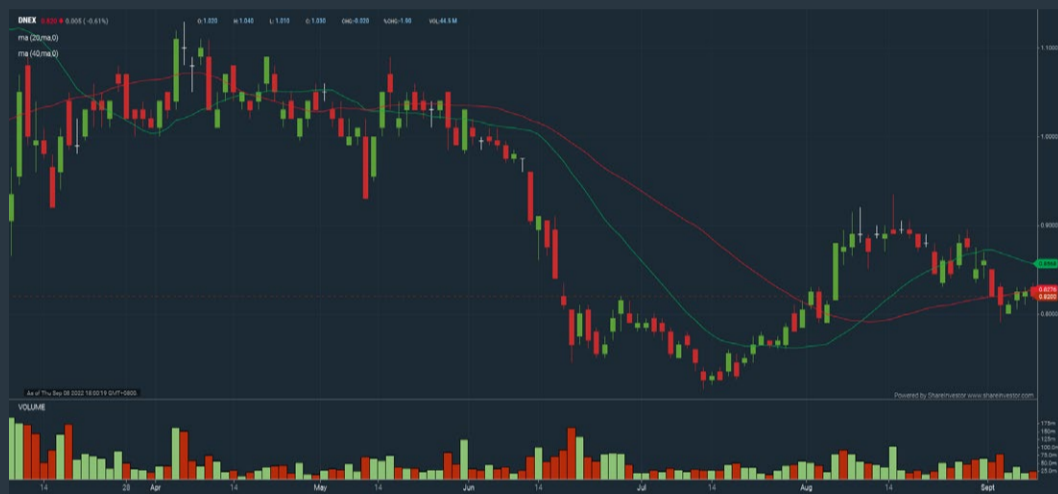
**B. Conditions (Criteria Filters)**

1. Free Cash Flow - select (more than) type (1) for the past select (1) financial year(s)
2. Revenue Growth - select (more than) type (1) for the past select (1) financial year(s)
3. Gross Profit (Earnings) Margin - select (more than) type (30) % for the past select (1) financial year(s)
4. Quality of Earnings - select (more than) type (1) for the past select (1) financial year(s)
5. Total Shareholder Return - select (more than) type (5) % for the past select (3) financial year(s)
6. Total Shareholder Return - select (more than) type (5) % for the past select (5) financial year(s)

- > click Save Template > Create New Template type (Growth Companies) > click Create
- > click Save Template as > select Growth Companies > click Save
- > click Screen Now (may take a few minutes)
- > Sort By: Select (Revenue Growth) Select (Desc)
- > Mouse over stock name > Factsheet > looking for Total Shareholder Return

## DAGANG NEXCHANGE BERHAD (4456)

C<sup>2</sup> Chart

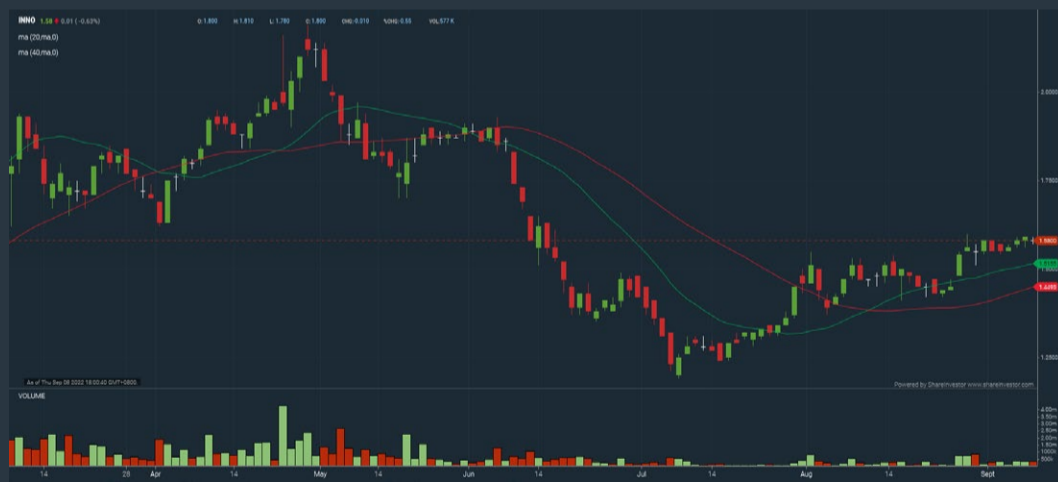


Analysis

Period		Dividend Received	Capital Appreciation	Total Shareholder Return	
Short Term Return	5 Days	-	-0.040		-4.66 %
	10 Days	-	-0.075		-8.38 %
	20 Days	-	+0.025		+3.14 %
Medium Term Return	3 Months	-	-0.210		-20.39 %
	6 Months	0.006	-0.300		-26.25 %
	1 Year	0.006	+0.085		+12.38 %
Long Term Return	2 Years	0.006	+0.585		+251.49 %
	3 Years	0.006	+0.565		+223.92 %
	5 Years	0.016	+0.345		+76.00 %
Annualised Return	Annualised	-	-		+11.97 %

## INNOPRISE PLANTATIONS BERHAD (6262)

C<sup>2</sup> Chart



Analysis

Period		Dividend Received	Capital Appreciation	Total Shareholder Return	
Short Term Return	5 Days	-	+0.015		+1.54 %
	10 Days	-	+0.145		+17.16 %
	20 Days	-	+0.140		+16.47 %
Medium Term Return	3 Months	0.010	-0.410		-28.57 %
	6 Months	0.010	-0.230		-18.03 %
	1 Year	0.020	+0.325		+51.88 %
Long Term Return	2 Years	0.025	+0.385		+67.77 %
	3 Years	0.025	+0.095		+13.41 %
	5 Years	0.025	+0.580		+147.56 %
Annualised Return	Annualised	-	-		+19.88 %

## TA ANN HOLDINGS BERHAD (5012)

C<sup>2</sup> Chart



Analysis

Period		Dividend Received	Capital Appreciation	Total Shareholder Return	
Short Term Return	5 Days	-	+0.110		+7.64 %
	10 Days	-	+0.050		+3.33 %
	20 Days	-	+0.110		+7.64 %
Medium Term Return	3 Months	0.060	-0.350		-15.26 %
	6 Months	0.120	-0.340		-11.64 %
	1 Year	0.260	+0.319		+47.03 %
Long Term Return	2 Years	0.345	+0.581		+95.56 %
	3 Years	0.365	+0.920		+203.97 %
	5 Years	0.425	+0.435		+77.13 %
Annualised Return	Annualised	-	-		+12.11 %

**Disclaimer:** The information on this page is provided as a service to readers. It does not constitute financial advice and/or any investment recommendations. Past performance is not indicative of future results. We assume no liability for damages resulting from or arising out of the use of such information. It would be best if you did your own research to make your personal investment decisions wisely or consult a licenced investment advisor.



# BURSASTATION

## Professional

### Stock Scanning

- Technical Analysis (TA) Market Scanner
- Fundamental Analysis (FA) Market Scanner

### Monitoring

- Portfolio
- Stock Alerts
- Price Spread Calculator

### Market Data

- Equities
- Derivatives

# Scan. Chart. Analyse.

Be The Intelligent Investor

### Charts

- Intraday Charts
- Interactive Charts
- Historical Charts
- Volume Distribution Charts

### Price Movements

- Streaming Prices
- Time & Sales
- Trade Summary Matrix
- Quote Movements
- 5 Levels Market Depth
- Historical Price Download

### Fundamentals

- Factsheets
- Financials
- Insider Trades

Brought to you as a collaborative effort by ShareInvestor and Bursa Malaysia, **BursaStation Professional** is designed with you, the user, in mind, as a user-friendly yet full of powerful features that will appeal to investors/traders who need instant access to fundamental, technical, and trading data, anytime, anywhere. **BursaStation Professional** is a state-of-the-art Stock Market Tracker with Charting Software that places in your hands the power to make better investment decisions.

[CLICK HERE TO START YOUR 14-DAYS FREE TRIAL](#)

## Price & Total Shareholder Return (as at Yesterday)

Fundamental Analysis

**DEFINITION:** Company is paying out dividend with low or moderate leverage.

**CHART GUIDE:** Total Shareholder Return (TSR) combines share price appreciation and distributions paid to show the total return to the shareholder expressed as a percentage.



ShareInvestor WebPro > Screener > Market Screener (FA & TA) > select BURSA > add criteria

**A. Criteria**

- > click Add Criteria
- Fundamental Analysis Conditions tab >select (i) Dividend Yield
- Fundamental Analysis Conditions tab >select (ii) Dividend Payout (Historical)
- Fundamental Analysis Conditions tab >select (iii) Total Debt To Equity
- Fundamental Analysis Conditions tab >select (iv) Total Shareholder Returns
- Fundamental Analysis Conditions tab >select (v) Total Shareholder Returns
- Fundamental Analysis Conditions tab / >select (vi) CAGR of Dividend Per Share

• Fundamental Analysis Conditions tab >select (vii) CAGR of Dividend Per Share

**B. Conditions (Criteria Filters)**

1. Dividend Yield - select (more than) type (1) % for the past select (1) financial year(s)
2. Dividend Payout (Historical) - select (between) type (0.5) to type (1) times for the past select (1) financial year(s)
3. Total Debt to Equity - select (less than) type (1) for the past select (1) financial year(s)
4. Total Shareholder Return - select (more than) type (5) % for the past select (3) financial year(s)
5. Total Shareholder Return - select (more than) type (5) % for the past select (5) financial year(s)

6. CAGR of Dividend Per Share - select (less than) type (30) % for the past select (5) financial year(s)
7. CAGR of Dividend Per Share - select (more than) type (1) % for the past select (5) financial year(s)

- > click Save Template > Create New Template type (Dividend Companies) > click Create
- > click Save Template as > select Dividend Companies > click Save
- > click Screen Now (may take a few minutes)
- > Sort By: Select (Dividend Yield) Select (Desc)
- > Mouse over stock name > Factsheet > looking for Total Shareholder Return

## KIM LOONG RESOURCES BERHAD (5027)

C<sup>2</sup> Chart

Analysis



Period	Dividend Received	Capital Appreciation	Total Shareholder Return
Short Term Return	5 Days	-	+0.59 %
	10 Days	-	+0.59 %
	20 Days	0.050	-
Medium Term Return	3 Months	0.050	-7.85 %
	6 Months	0.050	-17.37 %
Long Term Return	1 Year	0.140	+25.42 %
	2 Years	0.240	+46.62 %
	3 Years	0.270	+84.70 %
	5 Years	0.510	+84.54 %
Annualised Return	Annualised	-	+13.04 %

## ORIENTAL HOLDINGS BERHAD (4006)

C<sup>2</sup> Chart

Analysis



Period	Dividend Received	Capital Appreciation	Total Shareholder Return
Short Term Return	5 Days	-	+3.22 %
	10 Days	-	+1.23 %
	20 Days	-	+2.07 %
Medium Term Return	3 Months	-	+0.82 %
	6 Months	0.850	+4.64 %
Long Term Return	1 Year	1.150	+18.76 %
	2 Years	2.000	+22.37 %
	3 Years	3.350	+54.79 %
	5 Years	6.250	+78.78 %
Annualised Return	Annualised	-	+12.32 %

## UNITED PLANTATIONS BERHAD (2089)

C<sup>2</sup> Chart

Analysis



Period	Dividend Received	Capital Appreciation	Total Shareholder Return
Short Term Return	5 Days	-	+5.86 %
	10 Days	-	+3.83 %
	20 Days	-	+6.17 %
Medium Term Return	3 Months	0.100	+0.42 %
	6 Months	0.300	+21.29 %
Long Term Return	1 Year	0.400	+44.94 %
	2 Years	0.600	+47.12 %
	3 Years	0.900	+26.49 %
	5 Years	1.700	+41.68 %
Annualised Return	Annualised	-	+7.22 %

**Disclaimer:** The information on this page is provided as a service to readers. It does not constitute financial advice and/or any investment recommendations. Past performance is not indicative of future results. We assume no liability for damages resulting from or arising out of the use of such information. It would be best if you did your own research to make your personal investment decisions wisely or consult a licenced investment advisor.

Week: 02 September - 08 September 2022

More Brokers' Call 

<b>AMINVESTMENT BANK</b> <small>... See More</small>	Call	Target Price	Release Date
Tenaga Nasional Berhad (5347)	<b>BUY</b>	RM11.80	02 Sep 2022
Lagenda Properties Berhad (7179)	<b>BUY</b>	RM1.82	07 Sep 2022
Deleum Berhad (5132)	<b>BUY</b>	RM1.02	07 Sep 2022
<b>BIMB SECURITIES SDN BHD</b> <small>... See More</small>	Call	Target Price	Release Date
Datasonic Group Berhad (5216)	<b>BUY</b>	RM0.62	05 Sep 2022
Reservoir Link Energy Berhad (0219)	<b>BUY</b>	RM0.52	07 Sep 2022
<b>CGS CIMB</b> <small>... See More</small>	Call	Target Price	Release Date
Malayan Banking Berhad (1155)	<b>ADD</b>	RM10.00	05 Sep 2022
Duopharma Biotech Berhad (7148)	<b>ADD</b>	RM1.70	05 Sep 2022
<b>KENANGA</b> <small>... See More</small>	Call	Target Price	Release Date
Kelington Group Berhad (0151)	<b>OUTPERFORM</b>	RM1.70	06 Sep 2022
<b>MALACCA SECURITIES SDN BHD</b> <small>... See More</small>	Call	Target Price	Release Date
Kelington Group Berhad (0151)	<b>BUY</b>	RM1.70	06 Sep 2022
<b>MIDF</b> <small>... See More</small>	Call	Target Price	Release Date
WCT Holdings Berhad (9679)	<b>BUY</b>	RM0.57	02 Sep 2022
Malayan Banking Berhad (1155)	<b>BUY</b>	RM10.41	02 Sep 2022
Al-Aqar Healthcare REIT (5116)	<b>BUY</b>	RM1.38	05 Sep 2022
KKB Engineering Berhad (9466)	<b>NEUTRAL</b>	RM1.50	07 Sep 2022
<b>JOB KAYHIAN</b> <small>... See More</small>	Call	Target Price	Release Date
Malton Berhad (6181)	<b>BUY</b>	RM0.51	02 Sep 2022
YTL Power International Berhad (6742)	<b>BUY</b>	RM0.88	05 Sep 2022
Duopharma Biotech Berhad (7148)	<b>BUY</b>	RM1.43	06 Sep 2022
Deleum Berhad (5132)	<b>HOLD</b>	RM0.85	07 Sep 2022
MY E.G. Services Berhad (0138)	<b>BUY</b>	RM1.30	07 Sep 2022

**Disclaimer:** InveSt does not accept any liability whatsoever for any direct, indirect or consequential losses (including loss of profit) or damages that may arise from the use of information or opinions in this publication. The information and opinions in InveSt are not to be considered as an offer to sell or buy any of the securities discussed. Opinions expressed are subject to change without notice. The Brokers may, from time to time, have interests or positions in the securities mentioned. For the full report on each item listed on this page, please visit [https://www.shareinvestor.com/my/brokers\\_call](https://www.shareinvestor.com/my/brokers_call).

**DEFINITION:** Top 10 stocks with Technical Analysis plus Pattern Matching by 60 pre-defined indicators by the system showing a higher probability of bullish sentiment on the share price.



ShareInvestor WebPro > Screener > Predefined TA Screens > select market BURSA > Most Long Signals > click Scan Results or mouse over each company

**HB GLOBAL LIMITED (5187.MY)**

**HBGLOB**

Price updated at 08 Sep 2022 16:54

Last: <b>0.135</b>	Change: -	Volume: <b>87,159</b>
	Change (%): -	Range: <b>0.130 - 0.140</b>

TA Scanner Results based on historical data up to 08 Sep 2022

Condition	Signal	Explanation
Bollinger Band: Bullish Long Term Volatility Breakout and Trending	Long	1. Close price above upper bollinger band(33,1). 2. Volume above average volume(50). 3. Average volume(50) is above 300,000.
Bollinger Band: Bullish Short Term Volatility Breakout and Trending	Long	1. Close price above upper bollinger band(33,1). 2. Volume above average volume(10). 3. Average volume(10) is above 300,000.
Bollinger Band: High Above Upper Bollinger Band	Neutral	1. High above upper bollinger band(20,2). 2. Average volume(5) is above 100,000.
Donchian Channels: High Above Upper Donchian Channels	Long	High crossed above the upper Donchian Channel(14,4)
MA: Short Term Bullish Moving Average Crossover	Long	MA(10) crossed above MA(15) within the last 1 day.
MACD: Bullish MACD Crossover	Long	1. MACD(12,26) diff line crossed above the MACD(12,26) signal line. 2. MACD Histogram(12,26) is above 0.
Parabolic SAR: Bearish Parabolic SAR Reversal	Neutral	1. Parabolic SAR 1 day ago above close price 1 day ago for the last 5 days. 2. Parabolic SAR below close price
Volume: Volume Spike	Long	1. Volume is more than 500% above average volume(10). 2. Volume above 200000. 3. Close price above 0.10

**PRESS METAL ALUMINIUM HOLDINGS BERHAD (8869.MY)**

**PMETAL**

Price updated at 08 Sep 2022 16:59

Last: <b>5.020</b>	Change: <b>+0.030</b>	Volume: <b>136,943</b>
	Change (%): <b>+0.60</b>	Range: <b>4.930 - 5.040</b>

TA Scanner Results based on historical data up to 08 Sep 2022

Condition	Signal	Explanation
Bollinger Band: Bullish Long Term Volatility Breakout and Trending	Long	1. Close price above upper bollinger band(33,1). 2. Volume above average volume(50). 3. Average volume(50) is above 300,000.
Bollinger Band: Bullish Short Term Volatility Breakout and Trending	Long	1. Close price above upper bollinger band(33,1). 2. Volume above average volume(10). 3. Average volume(10) is above 300,000.
Bollinger Band: High Above Upper Bollinger Band	Neutral	1. High above upper bollinger band(20,2). 2. Average volume(5) is above 100,000.
Donchian Channels: High Above Upper Donchian Channels	Long	High crossed above the upper Donchian Channel(14,4)
MA: Short Term Bullish Moving Average Crossover	Long	MA(10) crossed above MA(15) within the last 1 day.
MACD: Bullish MACD Crossover	Long	1. MACD(12,26) diff line crossed above the MACD(12,26) signal line. 2. MACD Histogram(12,26) is above 0.
Parabolic SAR: Bearish Parabolic SAR Reversal	Neutral	1. Parabolic SAR 1 day ago above close price 1 day ago for the last 5 days. 2. Parabolic SAR below close price
Williams %R: Bearish Williams %R	Short	1. Williams %R(26) between 0 and -20. 2. Average volume(5) is above 100,000

**Disclaimer:** The information on this page is provided as a service to readers. It does not constitute financial advice and/or any investment recommendations. Past performance is not indicative of future results. We assume no liability for damages resulting from or arising out of the use of such information. It would be best if you did your own research to make your personal investment decisions wisely or consult a licenced investment advisor.

**OMESTI BERHAD (9008.MY)**

**OMESTI**

Price updated at 08 Sep 2022 16:50

Last: <b>0.360</b>	Change: <b>-0.015</b>	Volume: <b>241</b>
	Change (%): <b>-4.00</b>	Range: <b>0.360 - 0.375</b>

TA Scanner Results based on historical data up to 08 Sep 2022

Condition	Signal	Explanation
Bollinger Band: Bullish Lower Bollinger Band Support	Long	1. Low 1 day ago below lower bollinger band(20,2). 2. Close above close 1 day ago. 3. Average volume(5) is above 100,000.
Bollinger Band: Low Below Lower Bollinger Band	Neutral	1. Low below lower bollinger band(20,2). 2. Average volume(5) is above 100,000.
Candlestick: Bullish Engulfing	Long	Bullish: Engulfing
DM: Bullish Directional Movement	Long	-DI(14) crossed below +DI(14)
Volume: Volume Spike	Long	1. Volume is more than 500% above average volume(10). 2. Volume above 200000. 3. Close price above 0.10

**COUNTRY HEIGHTS HOLDINGS BERHAD (5738.MY)**

**CHHB**

Price updated at 08 Sep 2022 16:44

Last: <b>0.410</b>	Change: -	Volume: <b>1,973</b>
	Change (%): -	Range: <b>0.410 - 0.415</b>

TA Scanner Results based on historical data up to 08 Sep 2022

Condition	Signal	Explanation
Candlestick: Bullish Engulfing	Long	Bullish: Engulfing
Volume: 10 Days large value Buy Up trade	Long	1. 150K value Buy Up greater than Sell Down by 20% for 10 days. 2. 50K-100K value Buy Up greater than Sell Down by 20% for 10 days. 3. Average volume(10) is above 1000000
Volume: 5 Days large value Buy Up trade	Long	1. 150K value Buy Up greater than Sell Down by 20% for 5 days. 2. 50K-100K value Buy Up greater than Sell Down by 20% for 5 days. 3. Average volume(10) is above 1000000
Williams %R: Bullish Williams %R	Long	1. Williams %R(26) between -80 and -100. 2. Average volume(5) is above 100,000.

**SDS GROUP BERHAD (0212.MY)**

**SDS**

Price updated at 08 Sep 2022 16:59

Last: <b>0.560</b>	Change: <b>-0.010</b>	Volume: <b>43,711</b>
	Change (%): <b>-1.75</b>	Range: <b>0.555 - 0.580</b>

TA Scanner Results based on historical data up to 08 Sep 2022

Condition	Signal	Explanation
Candlestick: Bullish Engulfing	Long	Bullish: Engulfing
Chaikin Volatility: Decreasing Chaikin Volatility	Neutral	Chaikin Volatility(10,10) has been decreasing for 5 days
Price: New 52 Week High	Long	1. Stock reach a new 52 week high. 2. Average volume(30) is above 50000.
Volume: 10 Days large value Buy Up trade	Long	1. 150K value Buy Up greater than Sell Down by 20% for 10 days. 2. 50K-100K value Buy Up greater than Sell Down by 20% for 10 days. 3. Average volume(10) is above 1000000
Volume: Consecutive Days Of Increasing Average Volume	Long	1. Average Volume(20) has been increasing over the last 2 weeks. 2. Average volume(20) is above 100000
Williams %R: Bearish Williams %R	Short	1. Williams %R(26) between 0 and -20. 2. Average volume(5) is above 100,000



**MYCRON STEEL BERHAD (5087.MY)**

**MYCRON**

Price updated at 08 Sep 2022 16:54

Last: <b>0.450</b>	Change: <b>-0.005</b>	Volume: <b>3,225</b>
	Change (%): <b>-1.10</b>	Range: <b>0.450 - 0.460</b>

TA Scanner Results based on historical data up to 08 Sep 2022

Condition	Signal	Explanation
Bollinger Band: Bullish Long Term Volatility Breakout and Trending	Long	1. Close price above upper bollinger band(33,1). 2. Volume above average volume(50). 3. Average volume(50) is above 300,000.
Bollinger Band: Bullish Lower Bollinger Band Support	Long	"1. Low 1 day ago below lower bollinger band(20,2). 2. Close above close 1 day ago. 3. Average volume(5) is above 100,000."
DM: Bullish Directional Movement	Long	-DI(14) crossed below +DI(14)
MA: Bullish Price Crossover	Long	1. Close price crossed above MA(40) within the last 1 day. 2. Previous day close price is below the MA(10) for the last 5 days
MACD: Bullish MACD Crossover	Long	1. MACD(12,26) diff line crossed above the MACD(12,26) signal line. 2. MACD Histogram(12,26) is above 0.
Parabolic SAR: Bearish Parabolic SAR Reversal	Neutral	1. Parabolic SAR 1 day ago above close price 1 day ago for the last 5 days. 2. Parabolic SAR below close price
Volume: Consecutive Days Of Decreasing Average Volume	Short	1. Average Volume(20) has been decreasing over the last 2 week. 2. Average volume(20) is above 50000



**HARTALEGA HOLDINGS BERHAD (5168.MY)**

**HARTA**

Price updated at 08 Sep 2022 16:58

Last: <b>1.610</b>	Change: <b>-0.040</b>	Volume: <b>153,022</b>
	Change (%): <b>-2.42</b>	Range: <b>1.600 - 1.660</b>

TA Scanner Results based on historical data up to 08 Sep 2022

Condition	Signal	Explanation
Candlestick: Bullish Engulfing	Long	Bullish: Engulfing
RSI: Short Term RSI 30 Bullish Crossover	Long	1. RSI(20) crossed above 30 within the last 1 day and RSI(20) 1 day ago below 30 for the last 5 days. 2. Volume above average volume(125). 3. Average volume(5) is above 100,000.
Stochastic: Fast Stochastic Buy Signal	Long	1. Fast Stochastic(15,5) %K crossed above 20. 2. Fast Stochastic(15,5) %K 1 day ago was below 20 for the last 5 days. 3. Average volume(30) is above 50000
Volume: Consecutive Days Of Increasing Average Volume	Long	1. Average Volume(20) has been increasing over the last 2 weeks. 2. Average volume(20) is above 100000
Williams %R: Bullish Williams %R	Long	1. Williams %R(26) between -80 and -100. 2. Average volume(5) is above 100,000.



**EG INDUSTRIES BERHAD (8907.MY)**

**EG**

Price updated at 08 Sep 2022 16:57

Last: <b>0.455</b>	Change: <b>-0.010</b>	Volume: <b>21,534</b>
	Change (%): <b>-2.15</b>	Range: <b>0.450 - 0.470</b>

TA Scanner Results based on historical data up to 08 Sep 2022

Condition	Signal	Explanation
Bollinger Band: Bullish Lower Bollinger Band Support	Long	1. Low 1 day ago below lower bollinger band(20,2). 2. Close above close 1 day ago. 3. Average volume(5) is above 100,000.



**BP PLASTICS HOLDING BERHAD (5100.MY)**

**BPPLAS**

Price updated at 08 Sep 2022 16:56

Last: <b>1.500</b>	Change: <b>+0.050</b>	Volume: <b>6,022</b>
	Change (%): <b>+3.45</b>	Range: <b>1.470 - 1.520</b>

TA Scanner Results based on historical data up to 08 Sep 2022

Condition	Signal	Explanation
Candlestick: Bullish Engulfing	Long	Bullish: Engulfing
DM: Bullish Directional Movement	Long	-DI(14) crossed below +DI(14)
Donchian Channels: High Above Upper Donchian Channels	Long	High crossed above the upper Donchian Channel(14,4)
MA: Short Term Bearish Moving Average Crossover	Short	MA(10) crossed below MA(15) within the last 1 day.
MACD: Bullish MACD Crossover	Long	1. MACD(12,26) diff line crossed above the MACD(12,26) signal line. 2. MACD Histogram(12,26) is above 0.
Parabolic SAR: Bearish Parabolic SAR Reversal	Neutral	1. Parabolic SAR 1 day ago above close price 1 day ago for the last 5 days. 2. Parabolic SAR below close price
Williams %R: Bearish Williams %R	Short	1. Williams %R(26) between 0 and -20. 2. Average volume(5) is above 100,000.



**INNATURE BERHAD (5295.MY)**

**INNATURE**

Price updated at 08 Sep 2022 16:59

Last: <b>0.575</b>	Change: <b>+0.030</b>	Volume: <b>30,621</b>
	Change (%): <b>+5.50</b>	Range: <b>0.550 - 0.575</b>

TA Scanner Results based on historical data up to 08 Sep 2022

Condition	Signal	Explanation
Bollinger Band: High Above Upper Bollinger Band	Neutral	1. High above upper bollinger band(20,2). 2. Average volume(5) is above 100,000.
Candlestick: Indecision Doji	Neutral	Indecision: Doji
Donchian Channels: High Above Upper Donchian Channels	Long	High crossed above the upper Donchian Channel(14,4)
MACD: Bullish MACD Crossover	Long	1. MACD(12,26) diff line crossed above the MACD(12,26) signal line. 2. MACD Histogram(12,26) is above 0.
Parabolic SAR: Bearish Parabolic SAR Reversal	Neutral	1. Parabolic SAR 1 day ago above close price 1 day ago for the last 5 days. 2. Parabolic SAR below close price
Volume: Consecutive Days Of Increasing Average Volume	Long	1. Average Volume(20) has been increasing over the last 2 weeks. 2. Average volume(20) is above 100000

**Disclaimer:** The information on this page is provided as a service to readers. It does not constitute financial advice and/or any investment recommendations. Past performance is not indicative of future results. We assume no liability for damages resulting from or arising out of the use of such information. It would be best if you did your own research to make your personal investment decisions wisely or consult a licenced investment advisor.

Condition	Signal	Explanation
Bollinger Band: Low Below Lower Bollinger Band	Neutral	1. Low below lower bollinger band(20,2). 2. Average volume(5) is above 100,000.
Candlestick: Bullish Harami	Long	Bullish: Harami
Volume: Consecutive Days Of Increasing Average Volume	Long	1. Average Volume(20) has been increasing over the last 2 weeks. 2. Average volume(20) is above 100000
Williams %R: Bullish Williams %R	Long	1. Williams %R(26) between -80 and -100. 2. Average volume(5) is above 100,000.

# GETTING TO KNOW UNIT TRUST SCHEMES

**F**inancial planning is a very important life skill that most of us had to learn on our own. At times, especially when we were young, we don't realise how important it is to plan for our financial future until we hit a life-changing moment, such as marriage or having our first child, which require a lot of money.

As such, some of us will have to start making up for lost time, increasing the pressure to reach a certain financial goal. It may not be enough to just save money. We will need to invest too in search of better returns.

One option is to invest in Unit Trust Schemes, or Unit Trusts.

## WHAT ARE UNIT TRUSTS?

A Unit Trust is an investment scheme that pools money from many investors who have similar investment objectives, strategies and risk appetites. The pooled moneys are then invested into a diversified portfolio of investment assets, such as shares, bonds, and cash equivalents.

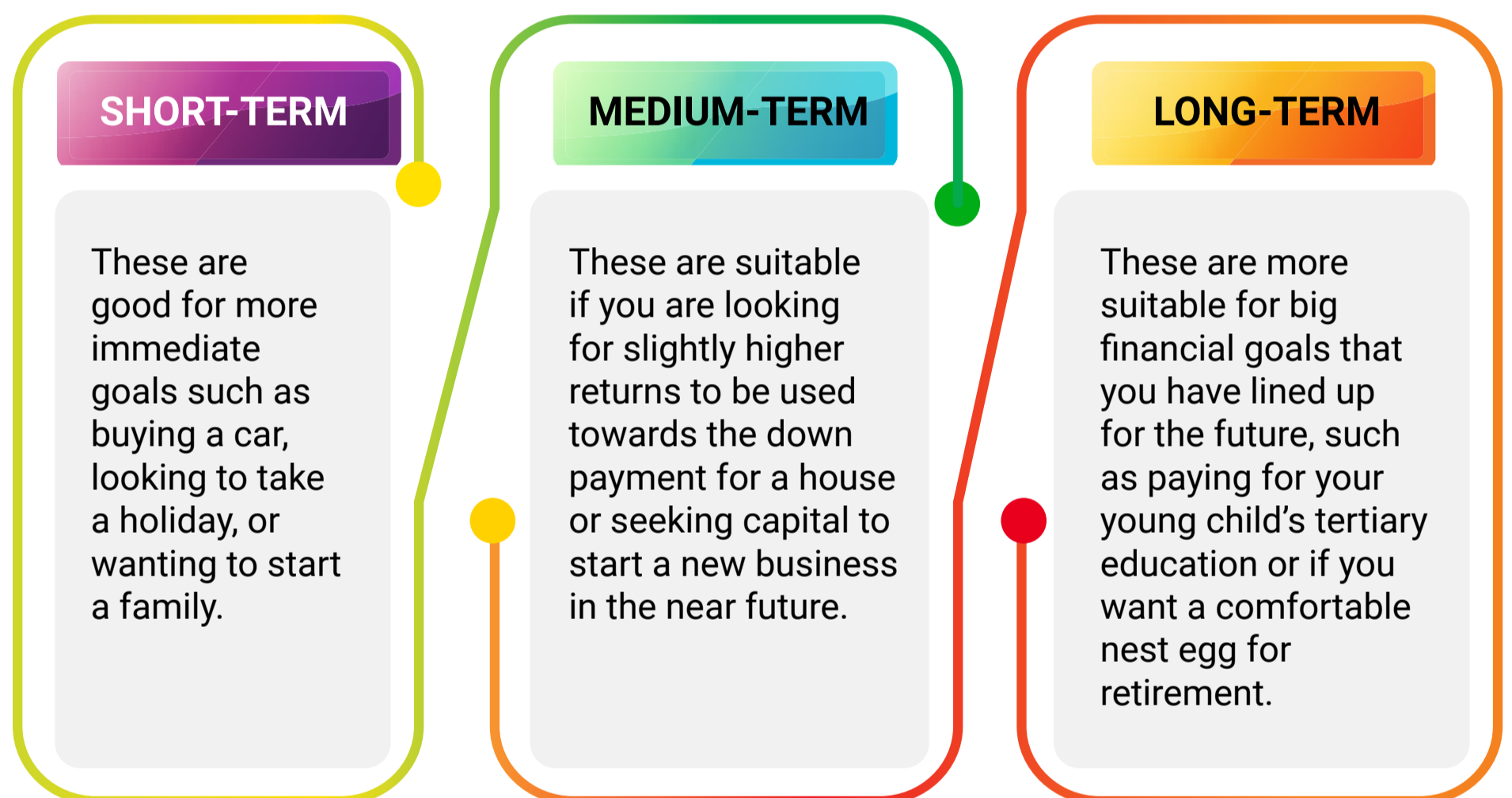
Unit Trusts are managed by professional fund/investment managers who have been licensed by the Securities Commission Malaysia. These professionals will be investing your money, using their expertise to help you reach your financial goals. With the professional fund managers making investments on your behalf, you are free from having to study the markets yourselves and making decisions on each individual investment.

Additionally, investing in Unit Trusts is an affordable option, especially for those who are just beginning their financial freedom journey. Only a small amount of capital is needed for you to start investing.

## HOW LONG SHOULD I INVEST?

There are many reasons why investing in Unit Trusts makes good financial sense, particularly if you already have a goal in mind. You can choose to invest in a Unit Trust for varying lengths of time, from one to three years (usually defined as short-term), three to five years (medium-term) or more than five years (long-term).

Here are some examples of how these investment strategies would work with your particular goals:



## RISKS INVOLVED?

As with most forms of investments, there are risks involved in investing in Unit Trusts. But the beauty of investing in Unit Trusts is that you can choose an investment strategy that best fits your risk appetite.

In general, there are three types of investment strategies you can consider, based on your preferred level of risk:

**CONSERVATIVE**

This is often the best strategy for older investors who have a large amount of capital and prefer stability over quick gains. Investments in this risk category tend to be in safe assets that are not easily susceptible to market shocks or swings, and very often, help to preserve the principal amount you invested.

**MODERATE**

For investors who are willing to take some risks, this strategy is the perfect balance between wanting to preserve your principal investment, while still taking advantage of some assets that can offer potential growth.

**AGGRESSIVE**

For younger investors, a small amount of capital can go a long way, especially if you are willing to invest for the long term. While there might be a chance that you may lose some of the initial capital, the fact that you have time on your side means that you can take higher risks to maximise growth.

**TYPES OF FUNDS AND THEIR PROFILES**

TYPE OF FUNDS	MONEY MARKET	FIXED INCOME	BALANCED	EQUITY
INVEST INTO	Short-term government securities and in low-risk money market instruments	Fixed income securities such as Malaysian Government Securities, corporate bonds, and money market instruments	Equities, fixed income securities and cash	Companies listed in public stock exchange such as Bursa Malaysia
OBJECTIVE	Provide preservation of principal by investing in a diversified portfolio of high-quality, short-term money market instruments	Provide regular income with less emphasis on producing capital growth	Provide investors with a single mutual fund that combines both growth and income	Provide reasonable rate of return on income and to realise capital growth
RETURN	Low	Low	Moderate	High
RISK	Low	Low	Moderate	High

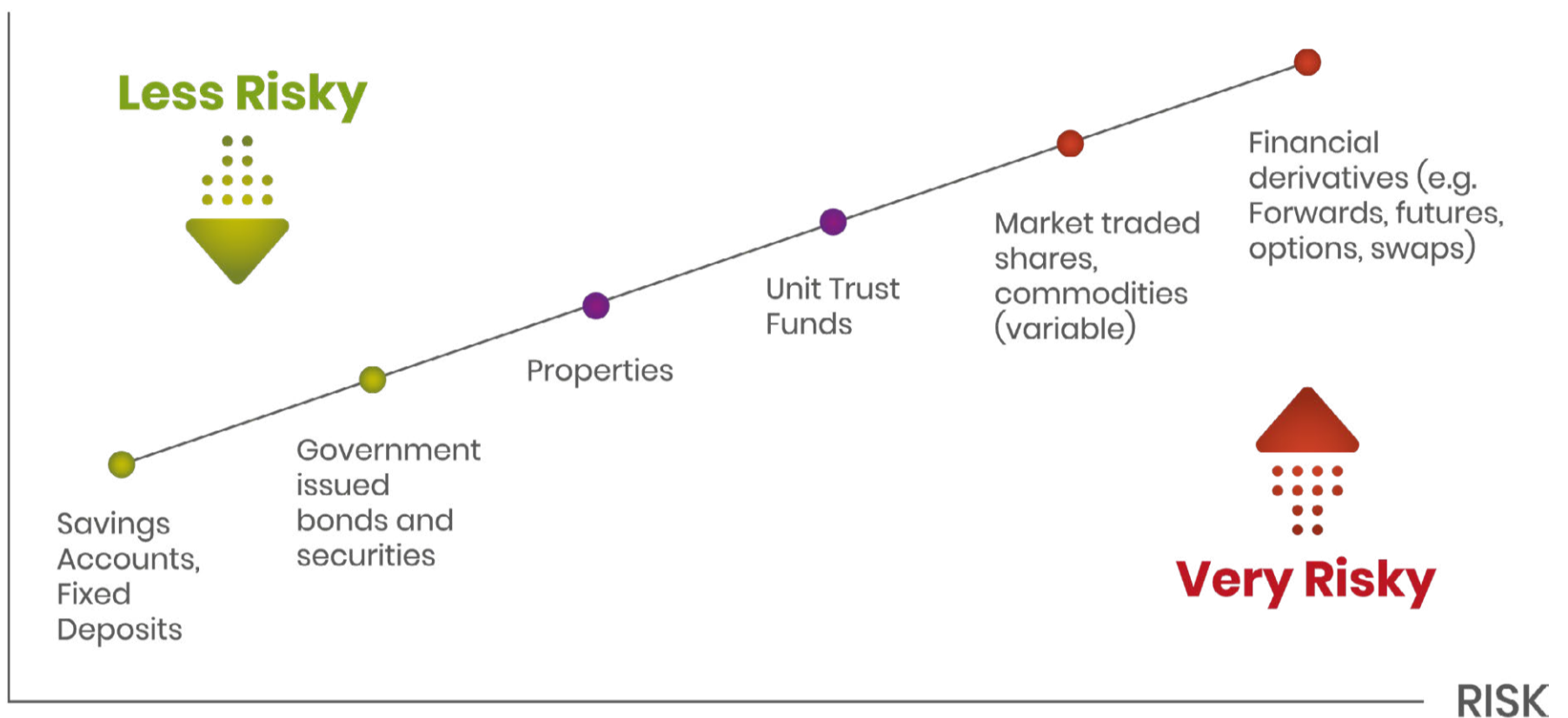


Let's see how Unit Trusts measure up to other forms of investments and savings:

**THE RISK / REWARD TRADE OFF**

The diagram below provides a snapshot of some of the more common investments and their relative level of risk. Although the risk profile of each individual asset may not fall neatly into the common categories above, the diagram provides a general guide for investors.

RETURN



Risk and Return are tangent. High risk is associated with high potential returns whilst low risk is associated with low potential returns.

Unit Trusts offer a middle ground when it comes to investment options. Generally, it is safer than investing directly in the market and yet, it has the potential to offer better returns than standard savings accounts. For those looking to safeguard their financial future or grow their wealth, it is well worth considering investing your money into Unit Trusts.

Visit FIMM's [website](#) for more information on Unit Trusts.



**SIGN UP FOR Invest**  
**IT'S FREE !!!**

[Click here](#)

Scan Me



Via email, every Friday

# HEALTHIER OUTLOOK SEEN FOR CONSTRUCTION INDUSTRY – KENANGA RESEARCH

According to Kenanga Research, the Malaysian construction industry is poised for improved earnings in the second half of 2022, given the gradual return of foreign workers and the recent easing in base metal prices. It is reiterating an “overweight” call on the sector, believing that the worst is over. Since the end of June, certain key building material prices, such as steel and aluminium, have come off substantially due to the intermittent lockdowns in China. So are diesel and bitumen on the back of weaker oil prices. Meanwhile, most new contracts being negotiated would have priced in the current market prices (which are higher) and have an element of price variation built in, to protect the contractor’s margins in the event of huge swing in material prices. Overall margins should gradually improve, as the low-margin old jobs tail off and the new projects adjusted for higher input costs start to contribute.

Construction counters under the research house’s coverage saw marginal deterioration in the second quarter of this year. Gamuda Bhd was the only company that beat stronger-than-expected property and construction margins. While on the disappointing end is WCT Holdings Bhd, which saw a weak contribution from its property unit as it struggled to cover overhead costs. Kerjaya Prospek Group Bhd was affected by slower billings on labour shortages.

The margins realised by most contractors in the first half of 2022 were still below the pre-Covid levels, due to the soaring costs of building materials, particularly steel and labour shortages that hampered work progress. Gamuda is the exception, which saw construction margins stronger than pre-Covid levels due to cost savings recognition from its MRT2 project, which is coming to an end. Amid a slow job market, year-to-date, IJM Corp Bhd and WCT have yet to secure any new work packages. Similarly, Kimlun Corp Bhd and Sunway Construction Group Bhd are trailing their replenishment targets. Consequently, orderbook levels of most players are depleting. However, it foresees better job replenishment prospects with the imminent rollout of MRT3 and Pan Borneo Highway (Phase 2). As multinational companies diversify their manufacturing bases geographically (away from China) to de-risk, there are opportunities in the construction of new semiconductor plants and data centres locally.

## **ASEAN PMI DATA SHOWS BUSINESS IMPROVEMENT – S&P GLOBAL**

According to S&P Global Market Intelligence economist Maryam Baluch, the Purchasing Managers' Index (PMI) data for August 2022 signalled an eleventh monthly improvement in business conditions across the Asean manufacturing sector. In its Global Asean Manufacturing PMI report, growth was supported by quicker upturns in production levels and new factory orders. The headline PMI posted at 52.3 in August, up from 52.2 in July, marking eleven months of expansion, with the latest reading indicating a solid improvement in the health of the Asean manufacturing sector.

For Malaysia, while the headline PMI figure was posted above the neutral 50 threshold for the fifth month running at Malaysian manufacturers (50.3), the pace of increase softened from July and signalled only a marginal improvement in operating conditions. In Singapore, six of the seven constituents recorded improvements in operating conditions in August with the country registering the quickest upturn, and for the ninth month running. That said, the rate of increase (56.8) softened from the survey high observed in July to the weakest since March.

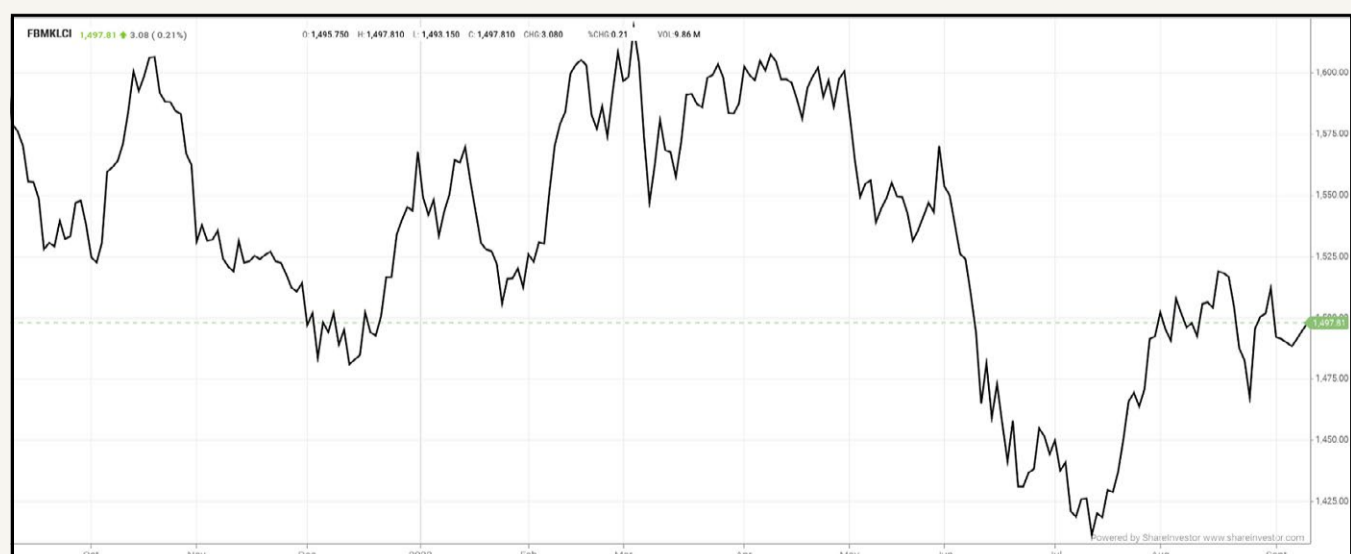
Mild growth was noted at Indonesian manufacturers, thereby extending the current run of increase to 11 months. At 51.7, the rate of increase was the quickest in four months. Similarly, at 51.2, the Philippines also reported an improvement in business conditions. Looking ahead 12 months, manufacturing companies remain hopeful of expansion in output. Sentiment improved for the third month running with the degree of confidence the highest since November 2016.

The August data signalled yet another modest expansion across the Asean manufacturing sector. Data suggested that higher production volumes and intakes of new orders resulted in firms raising employment and inventories. Supply-side and inflationary pressures eased during the latest survey period. Lead times lengthened at the slowest pace in 23 months, while input price inflation eased to the weakest in six months. Firms will hope these trends continue. Overall, client appetite across Asean nations remained strong. However, interest rate hikes will likely challenge demand in the coming months.

## EYE ON THE MARKETS

This week, on Friday (9Sept), the Ringgit opened at 4.4975 against the USD from 4.4880 on Monday (5Sept). Meanwhile, the Ringgit was 3.2068 to the Sing Dollar on Friday (9Sept). On Monday (5Sept), the FBM KLCI opened at 1492.03. As at Friday (9Sept) 10:00am, the FBM KLCI is up 5.78 points for the week at 1497.81. Over in US, the overnight Dow Jones Industrial Average closed up 193.24 points (+0.61%) to

31,774.52 whilst the NASDAQ up 70.23 (+0.60%) to 11,862.13.



KLCI 1 Year Chart

## Over 5 trading days


 ShareInvestor WebPro ([www.shareinvestor.com/my](http://www.shareinvestor.com/my))

1. Price > Stock Prices
2. Select Market: NASDAQ / NYSE / IDX / SET / HKEX / SGX (One bourse at a time)
3. select Stocks Tab
4. select Ranking Top Gainers or Top Losers (Over 5 Trading Days)
5. Mouse over Column Layout > select Edit Customs > select Name > select Last Done Price > select 5 Days Change > select 52 Weeks High > select 52 Weeks Low > Mouse Over Column Layout > select Custom

### NASDAQ (USD)

#### Top Gainers

Name	Last Done	Change Over 5 Days	52 Weeks High	52 Weeks Low
REGENERON PHARMACEUTICALS INC	708.850	+108.220	747.421	538.010
BOOKING HOLDINGS INC	1,906.020	+68.110	2,715.660	1,669.340
MERCADOLIBRE INC	922.540	+63.750	1,962.785	600.685
LULULEMON ATHLETICA INC	345.790	+51.340	485.825	251.510
SOLAREDEGE TECHNOLOGIES INC	314.160	+44.840	389.710	200.860

#### Top Losers

Name	Last Done	Change Over 5 Days	52 Weeks High	52 Weeks Low
COHERENT CORP	43.260	-224.960	278.340	222.040
CHARTER COMMUNICATIONS INC	395.910	-24.420	811.500	394.680
CREDIT ACCEPTANCE CORPORATION	511.500	-21.980	703.265	452.480
SHUTTLE PHARMACEUTICALS HLDGS INC	30.760	-21.640	126.260	11.770
COCA-COLA CONSOLIDATED INC	456.100	-18.250	656.110	378.150

### NYSE (USD)

#### Top Gainers

Name	Last Done	Change Over 5 Days	52 Weeks High	52 Weeks Low
BERKSHIRE HATHAWAY INC	426,850.000	+8910.000	544,389.260	396,500.000
CHIPOTLE MEXICAN GRILL	1,707.010	+90.490	1,958.545	1,196.280
METTLER-TOLEDO INTERNATIONAL INC	1,284.310	+75.980	1,714.750	1,082.780
NVR INC	4,191.610	+74.950	5,982.445	3,576.010
AUTOZONE INC	2,193.250	+47.660	2,362.240	1,521.006

#### Top Losers

Name	Last Done	Change Over 5 Days	52 Weeks High	52 Weeks Low
CABLE ONE INC	1,075.630	-83.690	2,033.110	1,049.810
AMTD DIGITAL INC SPON ADS EACH REP 0.4 ORD SHS	62.346	-49.855	2,555.300	12.050
BIGLARI HOLDINGS INC	615.510	-34.490	851.030	540.330
WATSCO INC	284.200	-20.830	314.000	233.910
PIONEER NATURAL RESOURCES CO	234.020	-13.780	288.460	143.630

### IDX (Rupiah)

#### Top Gainers

Name	Last Done	Change Over 5 Days	52 Weeks High	52 Weeks Low
DIAN SWASTATIKA SENTOSA TBK	36,000.000	+4150.000	56,400.000	17,475.000
INDO TAMBANGRAYA MEGAH TBK.	42,650.000	+2450.000	44,600.000	16,925.000
INDAH KIAT PULP & PAPER TBK.	9,675.000	+1425.000	9,725.000	6,800.000
UNITED TRACTORS TBK.	34,400.000	+1125.000	35,925.000	20,375.000
GOLDEN ENERGY MINES TBK.	7,950.000	+1025.000	9,650.000	3,440.000

#### Top Losers

Name	Last Done	Change Over 5 Days	52 Weeks High	52 Weeks Low
INDOINTERNET TBK.	19,100.000	-900.000	27,900.000	18,300.000
INTI BANGUN SEJAHTERA TBK.	7,900.000	-675.000	10,900.000	5,025.000
INDOSTERLING TECHNOMEDIA TBK.	5,950.000	-575.000	10,200.000	2,960.000
BANK JAGO TBK.	7,900.000	-350.000	19,500.000	6,600.000
SIANTAR TOP TBK.	7,200.000	-300.000	9,450.000	6,750.000

### SET (Thai Baht)

#### Top Gainers

Name	Last Done	Change Over 5 Days	52 Weeks High	52 Weeks Low
DELTA	604.000	+80.000	776.000	287.000
BBIK	120.000	+27.250	126.500	27.500
DITTO	69.000	+11.500	94.000	15.500
AEONTS	173.500	+11.000	209.000	152.000
BE8	64.500	+10.000	64.750	23.100

#### Top Losers

Name	Last Done	Change Over 5 Days	52 Weeks High	52 Weeks Low
OHTL	436.000	-24.000	468.000	300.000
INSURE	402.000	-16.000	700.000	22.000
PTTEP	160.000	-6.000	178.500	105.000
KBANK	147.000	-5.500	175.000	118.500
BUI	20.200	-4.700	44.750	10.700

### HKEX (HKD)

#### Top Gainers

Name	Last Done	Change Over 5 Days	52 Weeks High	52 Weeks Low
YUM CHINA HOLDINGS INC	386.600	+15.000	494.600	281.000
HONG KONG AEROSPACE TECHNOLOGY GRP	15.300	+6.320	35.000	7.900
KOOLEARN TECHNOLOGY HLDG LTD	33.800	+3.550	37.600	2.840
SHANGHAI FUDAN MICROELECTRONICS GRO	40.200	+3.150	41.750	17.720
GUOCO GROUP	78.000	+3.000	93.000	75.000

#### Top Losers

Name	Last Done	Change Over 5 Days	52 Weeks High	52 Weeks Low
NOAH HOLDINGS PRIVATE WEALTH AND AS	239.000	-33.600	307.800	230.000
TENCENT HOLDINGS LIMITED	301.800	-22.800	499.720	288.000
ORIENT OVERSEAS INT	142.200	-17.800	284.800	111.300
BYD COMPANY LIMITED	216.200	-16.400	333.000	165.000
NIO INC	136.200	-14.200	199.200	100.800

### SGX (SGD)

#### Top Gainers

Name	Last Done	Change Over 5 Days	52 Weeks High	52 Weeks Low
JARDINE C&C	34.220	+0.800	34.880	18.930
DBS	32.990	+0.440	37.490	29.180
HAW PAR	11.250	+0.300	12.860	10.650
JMH USD	54.590	+0.250	62.100	49.500
GOLDEN ENERGY	0.775	+0.130	0.825	0.275

#### Top Losers

Name	Last Done	Change Over 5 Days	52 Weeks High	52 Weeks Low
NIO INC. USD OV	17.330	-1.920	25.350	14.200
VENTURE	17.470	-0.660	19.520	16.240
PEGASUS SPAC	4.630	-0.270	5.020	4.630
DFIRG USD	2.590	-0.140	3.710	2.310
POWERMATIC DATA	2.630	-0.130	2.994	2.562

# JUMBO RATE INCREASES



Pankaj C Kumar

**Pankaj is a former CIO and Head of Research, presently focused on economic, market and corporate analyses. The views expressed here are entirely the writer's own.**

The global economy has entered into a contraction phase as the latest August J.P.Morgan Global Purchasing Managers' Index (PMI) Composite Output Index fell below the 50.0 threshold, with a reading of 49.3 from 50.8 in July. This is the first time since June 2020 that the index has shown a reading below 50.0, which suggests economic contraction has kicked in. The Eurozone, which is battling an emerging energy crisis, looks weak as well as the Final S&P Global Eurozone Composite PMI fell to 48.9 – a new 18-month low, against 49.9 in July. However, the ASEAN region looks relatively unscathed for now as the S&P Global Composite PMI for August for the region climbed a fraction to 52.3 from 52.2 in July. The weakening economic conditions sent markets lower, bond yields higher, while the Dollar hit multi-decade highs as the Ringgit saw it revisit the 1998 Asian Financial Crisis low.

The weak economic outlook was also echoed by the US Federal Reserve in its Beige Book report. According to the report, the tight labour market and high prices are both weighing down on economic prospects over the next 6-12 months although there are signs that inflation is decelerating.

## ECONOMY

Out of the US, the Non-Farm Payrolls of 315,000 for August came in slightly ahead of the market's forecast of 300,000 new jobs. However, surprisingly, the unemployment rate rose to 3.7%, from 3.5% in July, which was mainly driven by an increase in the labour participation rate by 0.3 percentage points to 62.4%. In other news, the Institute for Supply Management's (ISM) Services PMI came in better than expected as the August reading improved to 56.9 from 56.7 in July and beat the consensus estimate of 55.5.

Meanwhile, Chinese external trade data were relatively weak as August exports slowed to just a 7.1% y-o-y increase from the preceding month's 18.0% rise, while imports were barely firmer, rising by just 0.3% y-o-y against July's gain of 2.3%. As a result, China's August trade surplus fell by 21.6% to US\$79.4bil from the preceding month's US\$101.3bil.

Up north, Thailand's headline inflation surged to a fresh 14-year high with an increase of 7.9% y-o-y while core inflation rose by 3.1% y-o-y. The Philippines saw a slight moderation in inflation reading as the August data eased to 6.3% from a 6.4% increase in July. Meanwhile, down under, not only did the Reserve Bank of Australia raise the Official Cash Rate by another 50bps to 2.35% but also warned of further rate hikes ahead to stem inflationary pressure. Bank of Canada (BoC) followed suit, with a jumbo 75bps hike, taking its benchmark rate to 3.25%, while the European Central Bank (ECB) took out the bazooka with a 75bps hike in the benchmark deposit rate. Among developed economies, BoC is now in a pole position as the most aggressive central bank, having raised the benchmark rate by a full three percent. Malaysia too joined other global central banks as the Monetary Policy

Committee announced a 25bps hike in the Overnight Policy Rate (OPR) to 2.5%, bringing the cumulative rate hikes to 75bps year-to-date.

In other news, according to the Malaysian Investment Development Authority (MIDA), Malaysia recorded a total approved FDI valued at RM123.3 billion for 1H of 2022, down by 8.5% compared with RM134.7bil recorded in 1H of 2021. The services sector took in the lion's share of approved FDI, totalling RM78.0 billion or 63.3% of the total while the manufacturing and primary industry saw approved investments amounting to RM43.1 billion and RM2.2 billion respectively. Meanwhile, Malaysia's international reserves as at August 30, 2022, fell by US\$2.7bil or 2.4% to US\$108.2bil from US\$110.9bil as at mid-August 2022. In ringgit terms, the international reserves position stood at RM476.5bil, down by RM12.0bil from RM488.5bil as at August 15, 2022.

## CORPORATE

Al-'Aqar Healthcare REIT has acquired three hospitals from KPJ Healthcare for RM192mil, to be paid RM167mil in cash and issuance of 20.5mil new units at RM1.22 per unit. In contract news, Kelington received an award of a contract from the world leader in semiconductor solutions to undertake the bulk and specialty gas system distribution works in Kulim worth RM330mil. Inta Bina too was again in the news, winning a RM146mil construction contract from Eco Ardence Sdn. Bhd. for the design and main building works of a 32-storey serviced apartment block. Meanwhile, TAFI Industries won a RM115mil contract from Magna Prima for the construction of service apartments in Kepong.

## EQUITY

Global markets were generally mixed to firmer the past week with the US market rally on Wednesday lifting Asian sentiment after losses posted in the early part of the week in review. Markets that rose saw gains of between 0.1% and 1.9% on the Shanghai Composite Index, while markets that fell saw losses of between 0.2% and as much as



3.8% on the Hang Seng Index. Over on Bursa Malaysia, the KLCI was generally mixed to firmer, closing the week at 1,494.73 pts, up 2.78 pts or 0.2%.

For the week ended Sept 7, local institutions turned net buyers with an inflow of RM194.5mil as both the foreign and retail market participants were net sellers with an outflow of RM181.5mil and RM13.0mil respectively.

## EYE ON WEEK AHEAD

Later today, the Department of Statistics (DOSM) will be releasing the July Labour Market Report as well as the Industrial Production Index and the Monthly Manufacturing Sales figures. Meanwhile, China will be releasing the headline Consumer Price Index (CPI) and the Producer Price Index (PPI) for August, with the market looking at a 2.8% and 3.1% growth against last month's 2.7% and 4.2% prints respectively.

On Monday, Sept 12, Malaysia's July Wholesale and Retail Trade data is expected to be out while the next day, the US will be releasing the August headline and core inflation prints. On Thursday, Sept 15, the Bank of England (BoE) will decide on its policy rate, with the market expecting another jumbo rate hike of 75bps, bringing the benchmark rate to 2.50%. Later on the same day, the US will be releasing the August Retail Sales data, which is expected to see a 0.2% increase on a m-o-m basis.

*Pankaj is a former CIO and Head of Research, presently focused on economic, market and corporate analyses. The views expressed here are entirely the writer's own.*



**CHECK OUT**  
**SHAREINVESTOR**  
**BROKERS' CALL**

Weekly Buy/Sell/Hold calls from leading Malaysian Brokerages.

[Go To Brokers' Call](#)

# EMS FACES MORE DOWNSIDE RISKS DESPITE BETTER OUTLOOK



Devanesan  
Evanson

**Chief Executive  
Officer, Minority  
Shareholders Watch  
Group**

**T**he electronics manufacturing services (EMS) sector has been an important component of the Malaysian economy. Recent developments unfolding on the international landscape have enhanced the sector's attractiveness. Among these events, the continuous on and off trade war between two economic superpowers - United States and China, has turned into a blessing for the EMS sector in Malaysia. Malaysian companies involved in the EMS sector have been beneficiaries from the spat between these countries. These companies have benefitted from increased orders due to diversion in the supply chain from the geopolitical tensions. According to the Department of Statistics Malaysia, exports of electronics products to US and Europe increased recorded growth during the years of trade friction between the US and China. The opening of borders post pandemic is another catalyst to boost the growth of the EMS as this will facilitate ease of exports. In the same vein, data

from the Semiconductor Industry Association (SIA), which tracks the semiconductor industry globally, revealed that the global semiconductor industry was valued at US\$528 billion in 2021 and is poised to grow to US\$1.03 trillion in 2029, registering a 12.2% compounded annual growth rate (CAGR) during the period. These developments clearly demonstrate the long-term value proposition for Malaysian EMS companies as Malaysia is one of leading EMS players globally.

## **LOCAL EMS PLAYERS TO WATCH OUT FOR**

Having said that, our homegrown EMS companies are not without their own challenges. Earlier on, some of them were plagued by forced labour issues which saw their share prices being battered. One such company is ATA IMS Berhad, a Johor-based EMS contract manufacturer which saw its main customer, Dyson, withdrawing its business because of the forced labour allegation. Dyson contributed some 81% of ATA IMS' revenue in FYE 2021 and the withdrawal of its business had caused a major loss of revenue to the latter.

On a similar note, the two local EMS giants - V.S. Industry Berhad and SKP Resources Berhad are taking steps to alleviate concerns on their labour practices. It was reported that they have completed their social compliance audits, with findings that both companies have fully reimbursed all recruitment fees paid by their foreign workers in the past. They are on track to address or have already addressed all other minor remediable issues. As for the concern on acute labour shortage nationwide, both V.S. and SKP Resources are on track with their foreign worker recruitment plan by bringing in 1,000 and 3,700 foreign workers respectively into their workforce by the end of August – September 2022.

Operationally, V.S. has been targeting customers who offer higher margin contracts to support its rapid expansion. With that, analysts expect it to post better financial performance in line with higher production volumes from higher utilisation rates at its facilities. For FY2021, V.S. recorded a revenue of RM4 billion while net profit came in at RM245.35 million. As stated in a research note dated 19 August, CGS-CIMB Research has set a target price of RM1.21 for V.S. The stock closed at 99 sen as of 1 September.

Meanwhile SKP Resources is ramping up their production to cater to more orders from customers. It is constructing a multi-storey facility which is expected to be ready by early January 2023 and this will increase its production floor space by 60%. For FY2022, SKP Resources registered a net profit of RM173.4 million on the back of RM2.32 billion revenue. The Company has a cash pile of RM42.56 million with borrowings of RM23.98 million at the end of 30 June 2022. In terms of consensus view, there were 8 “buy” calls on the stock. CGS-CIMB Research has a RM2.56 target price for SKP Resources. Shares of SKP Resources closed at RM1.69 on 1 September.

## CONCLUSION

Though the EMS sector is being touted as attractive, investors must also consider the downside risks and challenges moving forwards. Firstly, EMS is a labour-intensive industry and Malaysia is still struggling with acute labour shortages. On the other hand, the financial performance of these listed local EMS players would largely hinge upon the demand towards their clients’ product as they mostly manufacture consumer electronics. Already there are concerns over slowing consumer demand and enterprises spending due to worsening macroeconomic condition in Europe and United States.

Also, a rising interest rate environment would result in higher required rate of return (derating of target PE multiple) by investors. As such, the drop in share prices does not necessarily mean stocks are cheap. Lest we forget, there are still supply chain disruption in the semiconductor industry, though there are signs that these disruptions are abating.

All in all, some of our local EMS players are also exposed to customer concentration risk. Also, do bear in mind that their valuations may be dampened by environmental, social and governance (ESG) issues despite the favourable outlook. Short term gyrations are inevitable for our local EMS players, but the long-term outlook is favourable as demand for electronics is expected to rise in tandem with technological advances and market dynamics.

**DEFINITION:** Insider Activity shows the trades made by substantial shareholders or directors of the company. Purchases by the directors and company share buyback may indicate the share price is undervalued and brings confidence to the price trend of the share price.



ShareInvestor WebPro > Fundamental > Insider Trades > click Search tab > Select Bursa > click Stock name > scroll up and leave at <Select Counter> Type Date Range for Announcement Date > click Search

Notice Period is 28 August 2022 - 03 September 2022

Effective Change Date	Stock Name	Buyer/ Seller Name [Classification]	Bought / (Sold) ['000]	No. of Shares After Trade ['000]	
			Total	Total	% Held
29 Aug 2022 - 30 Aug 2022	3A	MR TEO KWEE HOCK [SSH]	275	49,229	10.067
25 Aug 2022 - 26 Aug 2022	3A	MR TEO KWEE HOCK [SSH]	182	48,954	10.011
29 Aug 2022 - 29 Aug 2022	ABMB	EMPLOYEES PROVIDENT FUND BOARD [SSH]	-167	162,830	10.518
26 Aug 2022 - 26 Aug 2022	ABMB	EMPLOYEES PROVIDENT FUND BOARD [SSH]	-507	162,997	10.529
25 Aug 2022 - 25 Aug 2022	ABMB	EMPLOYEES PROVIDENT FUND BOARD [SSH]	-194	163,503	10.562
24 Aug 2022 - 24 Aug 2022	ABMB	EMPLOYEES PROVIDENT FUND BOARD [SSH]	-30	163,697	10.574
01 Sep 2022 - 01 Sep 2022	ACME	MR GOH CHOON LYE [SSH]	2,052	63,616	17.308
01 Sep 2022 - 01 Sep 2022	ACME	WWT WELLNESS SOLUTIONS SDN BHD [SSH]	2,052	63,616	17.308
29 Aug 2022 - 30 Aug 2022	ACME	WWT WELLNESS SOLUTIONS SDN BHD [SSH]	1,500	61,564	16.75
29 Aug 2022 - 30 Aug 2022	ACME	MR GOH CHOON LYE [SSH]	1,500	61,564	16.75
29 Aug 2022 - 29 Aug 2022	AEON	EMPLOYEES PROVIDENT FUND BOARD [SSH]	-139	147,810	10.528
26 Aug 2022 - 26 Aug 2022	AEON	EMPLOYEES PROVIDENT FUND BOARD [SSH]	-153	147,949	10.538
24 Aug 2022 - 24 Aug 2022	AEON	EMPLOYEES PROVIDENT FUND BOARD [SSH]	-46	148,102	10.549
30 Aug 2022 - 30 Aug 2022	AHB	TAN SRI DATUK SERI MAZLAN BIN LAZIM [DIR/CEO]	200	1,000	0.266
29 Aug 2022 - 29 Aug 2022	AIRPORT	EMPLOYEES PROVIDENT FUND BOARD [SSH]	200	257,510	15.52
29 Aug 2022 - 29 Aug 2022	ALLIANZ	EMPLOYEES PROVIDENT FUND BOARD [SSH]	102	12,569	7.063
26 Aug 2022 - 26 Aug 2022	ALLIANZ	EMPLOYEES PROVIDENT FUND BOARD [SSH]	4	12,466	7.005
24 Aug 2022 - 24 Aug 2022	ALLIANZ	EMPLOYEES PROVIDENT FUND BOARD [SSH]	24	12,462	7.003
29 Aug 2022 - 29 Aug 2022	AMBANK	EMPLOYEES PROVIDENT FUND BOARD [SSH]	1,965	348,119	10.513
26 Aug 2022 - 26 Aug 2022	AMBANK	EMPLOYEES PROVIDENT FUND BOARD [SSH]	1,000	346,153	10.453
25 Aug 2022 - 25 Aug 2022	AMBANK	EMPLOYEES PROVIDENT FUND BOARD [SSH]	3,329	345,153	10.422
24 Aug 2022 - 24 Aug 2022	AMBANK	EMPLOYEES PROVIDENT FUND BOARD [SSH]	-103	341,824	10.319
29 Aug 2022 - 29 Aug 2022	ANCOMNY	MR LEE CHEUN WEI [SSH]	25	59,930	6.905
29 Aug 2022 - 29 Aug 2022	ANCOMNY	MR LEE CHEUN WEI [DIR/CEO]	25	59,930	6.905
29 Aug 2022 - 29 Aug 2022	ANCOMNY	MR LEE CHEUN WEI [DIR/CEO]	10	10,790	7.211
24 Aug 2022 - 26 Aug 2022	ANCOMNY	DATO SIEW KA WEI [DIR/CEO]	56	185,910	21.427
24 Aug 2022 - 26 Aug 2022	ANCOMNY	DATO SIEW KA WEI [SSH]	56	185,910	21.427
30 Aug 2022 - 30 Aug 2022	ASIAFLE	ABIGAIL P. JOHNSON [SSH]	-306	10,964	5.629
30 Aug 2022 - 30 Aug 2022	ASIAFLE	FMR LLC [SSH]	-306	10,964	5.629
30 Aug 2022 - 30 Aug 2022	ASIAFLE	FIDELITY MANAGEMENT & RESEARCH COMPANY LLC [SSH]	-306	10,313	5.295
26 Aug 2022 - 29 Aug 2022	ASIAFLE	ABIGAIL P. JOHNSON [SSH]	-585	11,270	5.786
26 Aug 2022 - 29 Aug 2022	ASIAFLE	FMR LLC [SSH]	-585	11,270	5.786
26 Aug 2022 - 29 Aug 2022	ASIAFLE	FIDELITY MANAGEMENT & RESEARCH COMPANY LLC [SSH]	-585	10,619	5.452
29 Aug 2022 - 29 Aug 2022	ASTRO	EMPLOYEES PROVIDENT FUND BOARD ("EPF") [SSH]	-2,180	335,503	6.434
26 Aug 2022 - 26 Aug 2022	ASTRO	EMPLOYEES PROVIDENT FUND BOARD ("EPF") [SSH]	-559	337,684	6.476
25 Aug 2022 - 25 Aug 2022	ASTRO	EMPLOYEES PROVIDENT FUND BOARD ("EPF") [SSH]	-3,000	338,242	6.487
24 Aug 2022 - 24 Aug 2022	ASTRO	EMPLOYEES PROVIDENT FUND BOARD ("EPF") [SSH]	-1,642	341,242	6.544
29 Aug 2022 - 29 Aug 2022	ATECH	MR LEE CHONG YEOW @ LEE CHONG YAN DECEASED [SSH]	175,330	185,818	51.879
29 Aug 2022 - 29 Aug 2022	ATECH	MR LOH HOCK CHIANG [SSH]	76,293	185,818	51.879
29 Aug 2022 - 29 Aug 2022	ATECH	MR LOH HOCK CHIANG [DIR/CEO]	76,293	185,818	51.879
29 Aug 2022 - 29 Aug 2022	ATECH	MAIN STREAM LIMITED [SSH]	76,293	76,293	21.3
29 Aug 2022 - 29 Aug 2022	ATECH	PIXEL ADVISERS PTE. LTD. [SSH]	25,431	25,431	7.1
29 Aug 2022 - 29 Aug 2022	ATECH	MR TAN CHONG HIN [SSH]	25,431	25,431	7.1
30 Aug 2022 - 30 Aug 2022	ATLAN	TAN SRI DATO' SERI VINCENT TAN CHEE YIOU [SSH]	900	55,300	21.802
30 Aug 2022 - 30 Aug 2022	ATLAN	BERJAYA CORPORATION BERHAD [SSH]	900	55,200	21.763
01 Sep 2022 - 01 Sep 2022	AXREIT	KUMPULAN WANG PERSARAAN (DIPERBADANKAN) [SSH]	615	179,543	10.941
29 Aug 2022 - 29 Aug 2022	AXREIT	EMPLOYEES PROVIDENT FUND BOARD [SSH]	-250	264,543	16.12
26 Aug 2022 - 26 Aug 2022	AXREIT	EMPLOYEES PROVIDENT FUND BOARD [SSH]	-140	264,793	16.136
30 Aug 2022 - 30 Aug 2022	BAHVEST	DATO SRI DR MD KAMAL BIN BILAL [DIR/CEO]	-7,000	2,361	0.19
01 Sep 2022 - 01 Sep 2022	BJFOOD	TAN SRI DATO' SERI VINCENT TAN CHEE YIOU [SSH]	-1,000	195,285	55.315
26 Aug 2022 - 26 Aug 2022	BJFOOD	BERJAYA CORPORATION BERHAD [SSH]	2,700	185,191	52.308
26 Aug 2022 - 26 Aug 2022	BJFOOD	BERJAYA GROUP BERHAD [SSH]	2,700	185,191	52.307
26 Aug 2022 - 26 Aug 2022	BJFOOD	JUARA SEJATI SDN BHD [SSH]	2,700	42,130	11.9
30 Aug 2022 - 30 Aug 2022	BJLAND	TAN SRI DATO' SERI VINCENT TAN CHEE YIOU [SSH]	30,000	4,100,031	83.326
30 Aug 2022 - 30 Aug 2022	BJLAND	BERJAYA CORPORATION BERHAD [SSH]	30,000	3,769,722	76.612
30 Aug 2022 - 30 Aug 2022	BJLAND	BERJAYA GROUP BERHAD [SSH]	30,000	3,351,622	68.116
30 Aug 2022 - 30 Aug 2022	BJLAND	JUARA SEJATI SDN BHD [SSH]	30,000	1,702,661	34.603
01 Sep 2022 - 01 Sep 2022	BONIA	MR CHIANG SANG SEM [DIR/CEO]	24	144,869	72.075
01 Sep 2022 - 01 Sep 2022	BONIA	MR CHIANG SANG SEM [SSH]	24	133,107	66.223
29 Aug 2022 - 29 Aug 2022	BORNOIL	MT 23 RESOURCES LTD [SSH]	-145,000	516,656	5.93
29 Aug 2022 - 29 Aug 2022	BORNOIL	JANE BINTI RANJAH [SSH]	-145,000	516,656	5.93
29 Aug 2022 - 29 Aug 2022	BORNOIL	DATO AWANG BIN AHMAD @ AWANG ARIFFIN [SSH]	-145,000	516,656	5.93
29 Aug 2022 - 29 Aug 2022	BORNOIL	AA DAMAI SENTRAL SDN BHD [SSH]	-145,000	516,656	5.93
01 Sep 2022 - 01 Sep 2022	CBIP	YACKTMAN ASSET MANAGEMENT LP [SSH]	-3,800	24,401	5.105
29 Aug 2022 - 30 Aug 2022	CCB	JARDINE CYCLE & CARRIAGE LIMITED [SSH]	177	95,743	95.036
29 Aug 2022 - 30 Aug 2022	CCB	JARDINE STRATEGIC SINGAPORE PTE LTD [SSH]	177	95,743	95.036

Notice Period is 28 August 2022 - 03 September 2022

Effective Change Date	Stock Name	Buyer/ Seller Name [Classification]	Bought / (Sold) ['000]	No. of Shares After Trade ['000]	
			Total	Total	% Held
29 Aug 2022 - 30 Aug 2022	CCB	JSH ASIAN HOLDINGS LIMITED [SSH]	177	95,743	95.036
29 Aug 2022 - 30 Aug 2022	CCB	JARDINE MATHESON HOLDINGS LIMITED [SSH]	177	95,743	95.036
29 Aug 2022 - 30 Aug 2022	CCB	JMH INVESTMENTS LIMITED [SSH]	177	95,743	95.036
29 Aug 2022 - 30 Aug 2022	CCB	JARDINE STRATEGIC LIMITED [SSH]	177	95,743	95.036
26 Aug 2022 - 26 Aug 2022	CCB	JARDINE CYCLE & CARRIAGE LIMITED [SSH]	86	95,566	94.86
26 Aug 2022 - 26 Aug 2022	CCB	JARDINE MATHESON HOLDINGS LIMITED [SSH]	86	95,566	94.86
26 Aug 2022 - 26 Aug 2022	CCB	JSH ASIAN HOLDINGS LIMITED [SSH]	86	95,566	94.86
26 Aug 2022 - 26 Aug 2022	CCB	JARDINE STRATEGIC SINGAPORE PTE LTD [SSH]	86	95,566	94.86
26 Aug 2022 - 26 Aug 2022	CCB	JMH INVESTMENTS LIMITED [SSH]	86	95,566	94.86
26 Aug 2022 - 26 Aug 2022	CCB	JARDINE STRATEGIC LIMITED [SSH]	86	95,566	94.86
26 Aug 2022 - 26 Aug 2022	CIMB	EMPLOYEES PROVIDENT FUND BOARD [SSH]	-6,000	1,570,528	14.99
25 Aug 2022 - 25 Aug 2022	CIMB	EMPLOYEES PROVIDENT FUND BOARD [SSH]	-5,792	1,576,528	15.05
22 Aug 2022 - 22 Aug 2022	CIMB	EMPLOYEES PROVIDENT FUND BOARD [SSH]	-10,000	1,588,143	15.16
19 Aug 2022 - 19 Aug 2022	CIMB	EMPLOYEES PROVIDENT FUND BOARD [SSH]	-350	1,598,143	15.26
18 Aug 2022 - 18 Aug 2022	CIMB	EMPLOYEES PROVIDENT FUND BOARD [SSH]	-6,127	1,598,493	15.26
29 Aug 2022 - 29 Aug 2022	CIMB	KUMPULAN WANG PERSARAAN (DIPERBADANKAN) [SSH]	210	708,931	6.77
26 Aug 2022 - 26 Aug 2022	CIMB	KUMPULAN WANG PERSARAAN (DIPERBADANKAN) [SSH]	-208	708,721	6.77
30 Aug 2022 - 30 Aug 2022	CRG	DATO SRI CHIANG FONG YEE [DIR/CEO]	-49,470	275,820	34.236
26 Aug 2022 - 26 Aug 2022	DAYANG	URUSHARTA JAMAAH SDN. BHD. [SSH]	-1,000	80,716	6.97
25 Aug 2022 - 25 Aug 2022	DAYANG	URUSHARTA JAMAAH SDN. BHD. [SSH]	-1,000	81,716	7.06
24 Aug 2022 - 24 Aug 2022	DAYANG	URUSHARTA JAMAAH SDN. BHD. [SSH]	-1,000	82,716	7.14
30 Aug 2022 - 30 Aug 2022	DPHARMA	PERMODALAN NASIONAL BERHAD [SSH]	-566	403,920	42.418
30 Aug 2022 - 30 Aug 2022	DPHARMA	YAYASAN PELABURAN BUMIPUTRA [SSH]	-566	403,920	42.418
26 Aug 2022 - 26 Aug 2022	DPHARMA	PERMODALAN NASIONAL BERHAD [SSH]	-120	404,487	42.477
26 Aug 2022 - 26 Aug 2022	DPHARMA	YAYASAN PELABURAN BUMIPUTRA [SSH]	-120	404,487	42.477
25 Aug 2022 - 25 Aug 2022	DPHARMA	EMPLOYEES PROVIDENT FUND BOARD [SSH]	1,145	91,552	9.614
25 Aug 2022 - 25 Aug 2022	DPHARMA	PERMODALAN NASIONAL BERHAD [SSH]	-1,450	404,607	42.49
25 Aug 2022 - 25 Aug 2022	DPHARMA	YAYASAN PELABURAN BUMIPUTRA [SSH]	-1,450	404,607	42.49
29 Aug 2022 - 29 Aug 2022	DRBHCORP	EMPLOYEES PROVIDENT FUND BOARD [SSH]	-500	207,070	10.711
26 Aug 2022 - 26 Aug 2022	DRBHCORP	EMPLOYEES PROVIDENT FUND BOARD [SSH]	-118	207,570	10.737
24 Aug 2022 - 24 Aug 2022	DRBHCORP	EMPLOYEES PROVIDENT FUND BOARD [SSH]	-2,000	207,688	10.743
30 Aug 2022 - 30 Aug 2022	DSONIC	DATUK HAJI ABU HANIFAH BIN NOORDIN [SSH]	3,840	227,198	7.932
29 Aug 2022 - 29 Aug 2022	DSONIC	URUSHARTA JAMAAH SDN. BHD. [SSH]	-500	260,806	9.105
29 Aug 2022 - 29 Aug 2022	DSONIC	DATUK HAJI ABU HANIFAH BIN NOORDIN [SSH]	2,658	223,358	7.798
26 Aug 2022 - 26 Aug 2022	DSONIC	URUSHARTA JAMAAH SDN. BHD. [SSH]	-281	261,306	9.123
26 Aug 2022 - 26 Aug 2022	DSONIC	DATUK HAJI ABU HANIFAH BIN NOORDIN [SSH]	400	220,699	7.705
25 Aug 2022 - 25 Aug 2022	DSONIC	URUSHARTA JAMAAH SDN. BHD. [SSH]	-219	261,586	9.132
25 Aug 2022 - 25 Aug 2022	DSONIC	MR CHEW BEN BEN [SSH]	-1,000	233,454	8.15
25 Aug 2022 - 25 Aug 2022	DSONIC	DATUK HAJI ABU HANIFAH BIN NOORDIN [SSH]	400	220,299	7.691
24 Aug 2022 - 24 Aug 2022	DSONIC	URUSHARTA JAMAAH SDN. BHD. [SSH]	-1,000	261,806	9.14
26 Aug 2022 - 26 Aug 2022	ECOFIRS	CHOOI YOY SUN [SSH]	1,000	66,700	5.704
25 Aug 2022 - 25 Aug 2022	EFRAME	DATO HOOI JIA HAO [SSH]	-5,000	26,609	8.187
25 Aug 2022 - 25 Aug 2022	EG	DATO TERENCE TEA YEOK KIAN [SSH]	-50	38,556	9.653
25 Aug 2022 - 25 Aug 2022	EG	ACCRELIST LIMITED [SSH]	-50	37,556	9.403
25 Aug 2022 - 25 Aug 2022	EG	JUBILEE INDUSTRIES HOLDINGS LTD. [SSH]	-50	37,556	9.403
29 Aug 2022 - 01 Sep 2022	EIB	MR PAN KUM WAN [SSH]	700	164,034	48.245
29 Aug 2022 - 01 Sep 2022	EIB	MR PAN KUM WAN [DIR/CEO]	700	164,034	48.245
26 Aug 2022 - 26 Aug 2022	EMICO	MR LIM TEIK HIAN [SSH]	260	28,171	22.86
26 Aug 2022 - 26 Aug 2022	EMICO	MADAM LIM POH HOON [SSH]	260	27,911	22.86
30 Aug 2022 - 30 Aug 2022	ENGTIX	DATO NG HOOK [DIR/CEO]	300	126,176	29.024
30 Aug 2022 - 30 Aug 2022	ENGTIX	DATIN YAP SENG KUAN [SSH]	300	126,176	29.024
30 Aug 2022 - 30 Aug 2022	ENGTIX	DATO NG HOOK [SSH]	300	126,176	29.024
30 Aug 2022 - 30 Aug 2022	ENGTIX	DATIN YAP SENG KUAN [DIR/CEO]	300	126,176	29.024
26 Aug 2022 - 26 Aug 2022	ENGTIX	DATO NG HOOK [SSH]	300	125,876	28.955
26 Aug 2022 - 26 Aug 2022	ENGTIX	DATO NG HOOK [DIR/CEO]	300	125,876	28.955
26 Aug 2022 - 26 Aug 2022	ENGTIX	DATIN YAP SENG KUAN [SSH]	300	125,876	28.955
26 Aug 2022 - 26 Aug 2022	ENGTIX	DATIN YAP SENG KUAN [DIR/CEO]	300	125,876	28.955
26 Aug 2022 - 26 Aug 2022	F&N	EMPLOYEES PROVIDENT FUND BOARD [SSH]	39	48,361	13.185
24 Aug 2022 - 24 Aug 2022	F&N	EMPLOYEES PROVIDENT FUND BOARD [SSH]	50	48,307	13.171
29 Aug 2022 - 29 Aug 2022	FFB	EMPLOYEES PROVIDENT FUND BOARD [SSH]	-27	113,352	6.101
26 Aug 2022 - 26 Aug 2022	FFB	EMPLOYEES PROVIDENT FUND BOARD [SSH]	2,842	113,379	6.102
25 Aug 2022 - 25 Aug 2022	FFB	EMPLOYEES PROVIDENT FUND BOARD [SSH]	3,484	110,536	5.949
29 Aug 2022 - 29 Aug 2022	FFB	MR LOI TUAN EE [DIR/CEO]	650	835,298	44.958
29 Aug 2022 - 29 Aug 2022	FFB	MR LOI TUAN EE [SSH]	650	835,298	44.958
24 Aug 2022 - 24 Aug 2022	FFB	EMPLOYEES PROVIDENT FUND BOARD [SSH]	41	107,053	5.762
29 Aug 2022 - 29 Aug 2022	FLBHD	MR WONG YOKE NYEN [DIR/CEO]	330	1,050	1.011

**Disclaimer:** The information in Insider Activity is extracted from [www.shareinvestor.com/fundamental/insider\\_trades](http://www.shareinvestor.com/fundamental/insider_trades). The information on this page is provided as a service to readers. It does not constitute financial advice and/or any investment recommendations. We assume no liability for damages resulting from or arising out of the use of such information. Whilst every effort is made to ensure accuracy, the information presented is not the official record of shareholder filings. Readers are advised to read the original filings on the Bursa Malaysia website at [www.bursamalaysia.com](http://www.bursamalaysia.com)



**STROM**  
SWISS TIMEPIECES & JEWELLERY



StromWatch Asia  
Tele : +65.9817.3378  
Email : [ll.stromasia@gmail.com](mailto:ll.stromasia@gmail.com)  
[WWW.STROMWATCH.SWISS](http://WWW.STROMWATCH.SWISS)

Notice Period is 28 August 2022 – 03 September 2022

Effective Change Date	Stock Name	Buyer/ Seller Name [Classification]	Bought / (Sold) ['000]		No. of Shares After Trade ['000]	
			Total	Total	Total	% Held
29 Aug 2022 - 29 Aug 2022	FLBHD	DATUK AZNAM BIN MANSOR [DIR/CEO]	750		750	0.722
02 Sep 2022 - 02 Sep 2022	GAMUDA	RAJA DATO' SERI ELEENA BINTI ALMARHUM SULTAN AZLAN MUHIBBUDDIN SHAH AL-MAGHFUR-LAH [DIR/CEO]	1,863		114,733	4.43
02 Sep 2022 - 02 Sep 2022	GAMUDA	DATO' IR HA TIING TAI [DIR/CEO]	1		28,642	1.103
01 Sep 2022 - 01 Sep 2022	GAMUDA	KUMPULAN WANG PERSARAAN (DIPERBADANKAN) [KWAP] [SSH]	-822		199,545	7.7
29 Aug 2022 - 29 Aug 2022	GAMUDA	EMPLOYEES PROVIDENT FUND BOARD (EPF BOARD) [SSH]	-106		366,273	14.14
26 Aug 2022 - 26 Aug 2022	GAMUDA	EMPLOYEES PROVIDENT FUND BOARD (EPF BOARD) [SSH]	-1,297		366,379	14.35
25 Aug 2022 - 25 Aug 2022	GAMUDA	EMPLOYEES PROVIDENT FUND BOARD (EPF BOARD) [SSH]	-1,364		367,676	14.4
24 Aug 2022 - 24 Aug 2022	GAMUDA	EMPLOYEES PROVIDENT FUND BOARD (EPF BOARD) [SSH]	-1,024		369,041	14.45
24 Aug 2022 - 25 Aug 2022	GASMSIA	LEMBAGA TABUNG HAJI [SSH]	-350		99,124	7.72
29 Aug 2022 - 30 Aug 2022	GCAP	MR LEE POH HIN [SSH]	220		32,429	10.111
29 Aug 2022 - 29 Aug 2022	GLIB	MR YEE VOON HON [SSH]	48,973		48,973	8.282
01 Sep 2022 - 02 Sep 2022	GTRONIC	MR NG KWENG CHONG [DIR/CEO]	8		39,614	5.91
29 Aug 2022 - 30 Aug 2022	GTRONIC	MR NG KWENG CHONG [DIR/CEO]	8		39,606	5.91
01 Sep 2022 - 01 Sep 2022	HARBOUR	SAMARANG UCITS - SAMARANG ASIAN PROSPERITY [SSH]	1,099		24,447	6.134
30 Aug 2022 - 30 Aug 2022	HARBOUR	SAMARANG UCITS - SAMARANG ASIAN PROSPERITY [SSH]	901		23,348	5.858
29 Aug 2022 - 29 Aug 2022	HLBANK	EMPLOYEES PROVIDENT FUND BOARD [SSH]	-201		216,711	10.386
26 Aug 2022 - 26 Aug 2022	HLBANK	EMPLOYEES PROVIDENT FUND BOARD [SSH]	-72		216,912	10.395
25 Aug 2022 - 25 Aug 2022	HLBANK	EMPLOYEES PROVIDENT FUND BOARD [SSH]	-503		216,984	10.399
24 Aug 2022 - 24 Aug 2022	HLBANK	EMPLOYEES PROVIDENT FUND BOARD [SSH]	-341		217,487	10.423
29 Aug 2022 - 29 Aug 2022	HONGSENG	DATO SERI TEH HAI HIN [DIR/CEO]	343,400		630,283	12.338
29 Aug 2022 - 29 Aug 2022	HONGSENG	DALPHON LIMITED [SSH]	343,400		630,283	12.338
29 Aug 2022 - 29 Aug 2022	HONGSENG	DATO SERI TEH HAI HIN [SSH]	343,400		630,283	12.338
26 Aug 2022 - 26 Aug 2022	HPPHB	MR KOK HON SENG [SSH]	100		238,092	61.296
26 Aug 2022 - 26 Aug 2022	HPPHB	MADAM NG SOH HOON [DIR/CEO]	100		238,092	61.296
26 Aug 2022 - 26 Aug 2022	HPPHB	MR KOK HON SENG [DIR/CEO]	100		238,092	61.296
26 Aug 2022 - 26 Aug 2022	HPPHB	MADAM NG SOH HOON [SSH]	100		238,092	61.296
29 Aug 2022 - 29 Aug 2022	HUBLINE	DATO RICHARD WEE LIANG HUAT @ RICHARD WEE LIANG CHIAT [DIR/CEO]	-17,000		1,027,273	23.946
29 Aug 2022 - 29 Aug 2022	HUBLINE	DATO RICHARD WEE LIANG HUAT @ RICHARD WEE LIANG CHIAT [SSH]	-17,000		1,027,273	23.946
29 Aug 2022 - 29 Aug 2022	HUBLINE	BNDM INCORPORATED HOLDINGS SDN. BHD. [SSH]	-17,000		1,027,201	23.944
01 Aug 2022 - 01 Aug 2022	HUBLINE	DATO RICHARD WEE LIANG HUAT @ RICHARD WEE LIANG CHIAT [DIR/CEO]	-16,900		1,027,273	23.946
29 Aug 2022 - 29 Aug 2022	IGBREIT	EMPLOYEES PROVIDENT FUND BOARD ("EPF BOARD") [SSH]	333		410,497	11.456
26 Aug 2022 - 26 Aug 2022	IGBREIT	EMPLOYEES PROVIDENT FUND BOARD ("EPF BOARD") [SSH]	-3		410,164	11.447
29 Aug 2022 - 29 Aug 2022	IGBREIT	KUMPULAN WANG PERSARAAN (DIPERBADANKAN) [SSH]	166		264,182	7.372
26 Aug 2022 - 26 Aug 2022	IGBREIT	KUMPULAN WANG PERSARAAN (DIPERBADANKAN) [SSH]	23		264,016	7.368
24 Aug 2022 - 24 Aug 2022	IGBREIT	EMPLOYEES PROVIDENT FUND BOARD ("EPF BOARD") [SSH]	-63		410,167	11.447
29 Aug 2022 - 29 Aug 2022	IHH	EMPLOYEES PROVIDENT FUND BOARD [SSH]	-620		832,971	9.459
26 Aug 2022 - 26 Aug 2022	IHH	EMPLOYEES PROVIDENT FUND BOARD [SSH]	-684		833,590	9.466
29 Aug 2022 - 29 Aug 2022	IHH	MR MEHMET ALI AYDINLAR [SSH]	-29,000		524,110	5.952
29 Aug 2022 - 29 Aug 2022	IHH	MR MEHMET ALI AYDINLAR [DIR/CEO]	-29,000		524,110	5.952
25 Aug 2022 - 25 Aug 2022	IHH	EMPLOYEES PROVIDENT FUND BOARD [SSH]	-665		834,274	9.474
24 Aug 2022 - 24 Aug 2022	IHH	EMPLOYEES PROVIDENT FUND BOARD [SSH]	221		834,939	9.481
30 Aug 2022 - 30 Aug 2022	IMPIANA	DATO' SERI ISMAIL @ FAROUK BIN ABDULLAH [DIR/CEO]	-250		644,071	44.593
30 Aug 2022 - 30 Aug 2022	IMPIANA	DATO' SERI ISMAIL @ FAROUK BIN ABDULLAH [SSH]	-250		644,071	44.593
30 Aug 2022 - 30 Aug 2022	IMPIANA	IMPIANA SDN BHD [SSH]	-250		350,327	24.255
29 Aug 2022 - 29 Aug 2022	INARI	EMPLOYEES PROVIDENT FUND BOARD [SSH]	50		332,759	8.967
29 Aug 2022 - 29 Aug 2022	INARI	MR FOO KOK SIEW [DIR/CEO]	-50		182	0.005
24 Aug 2022 - 24 Aug 2022	INARI	EMPLOYEES PROVIDENT FUND BOARD [SSH]	134		332,709	8.965
29 Aug 2022 - 29 Aug 2022	IOICORP	EMPLOYEES PROVIDENT FUND BOARD [SSH]	-518		651,117	10.481
24 Aug 2022 - 24 Aug 2022	IOICORP	EMPLOYEES PROVIDENT FUND BOARD [SSH]	-33		651,636	10.489
26 Aug 2022 - 26 Aug 2022	IOIPG	EMPLOYEES PROVIDENT FUND BOARD [SSH]	-14		442,944	8.045
26 Aug 2022 - 26 Aug 2022	ITRONIC	DATUK CHU BOON TIONG [DIR/CEO]	2,800		11,821	2.702
01 Sep 2022 - 01 Sep 2022	IVORY	DATO' HNG CHOON SENG [SSH]	6,680		80,000	16.324
30 Aug 2022 - 30 Aug 2022	IVORY	DATO' HNG CHOON SENG [SSH]	73,320		73,320	14.961
30 Aug 2022 - 30 Aug 2022	IVORY	DATO' LOW ENG HOCK [SSH]	-73,320		161,781	33.011
30 Aug 2022 - 30 Aug 2022	IVORY	DATO LOW ENG HOCK [DIR/CEO]	-73,320		161,781	33.011
29 Aug 2022 - 01 Sep 2022	IWCITY	MR LIM CHEN HERNG [DIR/CEO]	913		4,210	0.457
25 Aug 2022 - 26 Aug 2022	JADEM	DATO' SRI CHONG WEI CHUAN [SSH]	-780		24,847	7.575
25 Aug 2022 - 26 Aug 2022	JADEM	X INFINITY GROUP BERHAD [SSH]	-780		21,455	6.541
25 Aug 2022 - 26 Aug 2022	JADEM	X INFINITY HOLDING SDN. BHD. [SSH]	-780		21,455	6.541
29 Aug 2022 - 29 Aug 2022	JSB-WB	ENCIK JEEFRI BIN MUHAMAD YUSUP [DIR/CEO]	550		6,556	4.307
01 Sep 2022 - 01 Sep 2022	KAREX	MADAM GOH YIN [SSH]	477		129,895	12.33
01 Sep 2022 - 01 Sep 2022	KAREX	MADAM GOH YEN YEN [SSH]	477		123,005	11.676
01 Sep 2022 - 01 Sep 2022	KAREX	MADAM GOH YEN YEN [DIR/CEO]	477		123,005	11.676
01 Sep 2022 - 01 Sep 2022	KAREX	MARYEN HOLDINGS LIMITED [SSH]	477		100,943	9.582
29 Aug 2022 - 30 Aug 2022	KKB	DATO SRI KHO KAK BENG [DIR/CEO]	36		117,719	40.772
29 Aug 2022 - 30 Aug 2022	KKB	DATO SRI KHO KAK BENG [SSH]	36		117,231	40.603
29 Aug 2022 - 30 Aug 2022	KKB	MADAM KHO POH LIN [DIR/CEO]	36		113,391	39.273
29 Aug 2022 - 30 Aug 2022	KKB	MR KHO POK TONG [DIR/CEO]	36		112,997	39.137
29 Aug 2022 - 30 Aug 2022	KKB	MR KHO POK TONG [SSH]	36		112,997	39.137
29 Aug 2022 - 30 Aug 2022	KKB	MADAM KHO POH LIN [SSH]	36		112,791	39.065
29 Aug 2022 - 30 Aug 2022	KKB	DATIN SRI LIEW MOI FAH [SSH]	36		112,469	38.954
29 Aug 2022 - 30 Aug 2022	KKB	MADAM KHO POH JOO [SSH]	36		112,365	38.918
29 Aug 2022 - 30 Aug 2022	KKB	KHO KAK BENG HOLDING COMPANY SDN. BHD. [SSH]	36		112,173	38.851
29 Aug 2022 - 29 Aug 2022	KLK	EMPLOYEES PROVIDENT FUND BOARD [SSH]	-383		112,009	10.389
26 Aug 2022 - 26 Aug 2022	KLK	EMPLOYEES PROVIDENT FUND BOARD [SSH]	-7		112,391	10.424
25 Aug 2022 - 25 Aug 2022	KLK	EMPLOYEES PROVIDENT FUND BOARD [SSH]	-376		112,398	10.425
30 Aug 2022 - 30 Aug 2022	KOSSAN	MR LIM KUANG YONG [SSH]	962		1,238,339	48.531
30 Aug 2022 - 30 Aug 2022	KOSSAN	MR LIM LENG BUNG [SSH]	320		1,237,533	48.499
30 Aug 2022 - 30 Aug 2022	KOSSAN	MR LIM SIAU TIAN [DIR/CEO]	320		638	0.025
29 Aug 2022 - 29 Aug 2022	KSENG	MR HO CHUNG KAIN (HE CHONGJING) [DIR/CEO]	71		951	0.265
01 Sep 2022 - 01 Sep 2022	LBS	TAN SRI DATO' SRI LIM HOCK SAN JP [DIR/CEO]	100		597,903	38.344
01 Sep 2022 - 01 Sep 2022	LBS	TAN SRI DATO' SRI LIM HOCK SAN JP [SSH]	100		593,150	38.039
29 Aug 2022 - 29 Aug 2022	LBS	TAN SRI DATO' SRI LIM HOCK SAN JP [DIR/CEO]	8		597,803	38.337
29 Aug 2022 - 29 Aug 2022	LBS	TAN SRI DATO' SRI LIM HOCK SAN JP [SSH]	8		593,050	38.033
25 Aug 2022 - 25 Aug 2022	LITRAK	EMPLOYEES PROVIDENT FUND BOARD [SSH]	69		33,412	6.187
24 Aug 2022 - 24 Aug 2022	LITRAK	EMPLOYEES PROVIDENT FUND BOARD [SSH]	48		33,343	6.175
29 Aug 2022 - 29 Aug 2022	MALPAC	MR LIM HONG LIANG [DIR/CEO]	45		19,110	25.48
29 Aug 2022 - 29 Aug 2022	MALPAC	MR LIM HONG LIANG [SSH]	45		19,110	25.48
29 Aug 2022 - 29 Aug 2022	MATRIX	EMPLOYEES PROVIDENT FUND BOARD [SSH]	-44		68,134	8.167
26 Aug 2022 - 26 Aug 2022	MATRIX	EMPLOYEES PROVIDENT FUND BOARD [SSH]	-189		68,177	8.172

Notice Period is 28 August 2022 – 03 September 2022

Effective Change Date	Stock Name	Buyer/ Seller Name [Classification]	Bought / (Sold) ['000]		No. of Shares After Trade ['000]	
			Total	Total	Total	% Held
30 Aug 2022 - 30 Aug 2022	MAYBANK	AMANAHRAYA TRUSTEES BERHAD - AMANAH SAHAM BUMIPUTERA [SSH]	-4,200		3,994,253	33.369
29 Aug 2022 - 29 Aug 2022	MAYBANK	EMPLOYEES PROVIDENT FUND BOARD [SSH]	-3,814		1,546,250	12.918
26 Aug 2022 - 26 Aug 2022	MAYBANK	EMPLOYEES PROVIDENT FUND BOARD [SSH]	-2,846		1,550,064	12.95
25 Aug 2022 - 25 Aug 2022	MAYBANK	EMPLOYEES PROVIDENT FUND BOARD [SSH]	-3,955		1,552,910	12.973
25 Aug 2022 - 25 Aug 2022	MAYBANK	AMANAHRAYA TRUSTEES BERHAD - AMANAH SAHAM BUMIPUTERA [SSH]	-8,500		3,998,453	33.404
24 Aug 2022 - 24 Aug 2022	MAYBANK	EMPLOYEES PROVIDENT FUND BOARD [SSH]	2,452		1,556,865	13.006
30 Aug 2022 - 30 Aug 2022	MBRIGHT	DATO' LEE WAI MUN DIMP. J.P. [DIR/CEO]	369,120		994,601	51.075
30 Aug 2022 - 30 Aug 2022	MBRIGHT	LEADING VENTURES SDN. BHD. [SSH]	369,120		994,601	51.075
30 Aug 2022 - 30 Aug 2022	MBRIGHT	DATO' LEE WAI MUN DIMP. J.P. [SSH]	369,120		994,601	51.075
30 Aug 2022 - 30 Aug 2022	MFLOUR	MR AZHARI ARSHAD [DIR/CEO]	3,710		31,780	3.11
02 Sep 2022 - 02 Sep 2022	MHB	ENCIK PANDAI OTHMAN [DIR/CEO]	30		50	0.003
29 Aug 2022 - 29 Aug 2022	MISC	EMPLOYEES PROVIDENT FUND BOARD [SSH]	-137		570,170	12.77
25 Aug 2022 - 25 Aug 2022	MISC	EMPLOYEES PROVIDENT FUND BOARD [SSH]	-146		570,293	12.78
26 Aug 2022 - 29 Aug 2022	MTRONIC	FITTERS DIVERSIFIED BERHAD [SSH]	20,000		190,723	12.457
26 Aug 2022 - 29 Aug 2022	MTRONIC	FITTERS PROPERTY DEVELOPMENT SDN BHD [SSH]	20,000		190,723	12.457
25 Aug 2022 - 25 Aug 2022	MTRONIC	FITTERS DIVERSIFIED BERHAD [SSH]	10,000		170,723	11.15
25 Aug 2022 - 25 Aug 2022	MTRONIC	FITTERS PROPERTY DEVELOPMENT SDN BHD [SSH]	10,000		170,723	11.15
02 Sep 2022 - 02 Sep 2022	MYEG	ASIA INTERNET HOLDINGS SDN. BHD. [SSH]	-2,500		1,363,474	18.474
29 Aug 2022 - 29 Aug 2022	MYEG	EMPLOYEES PROVIDENT FUND BOARD [SSH]	1,200		430,786	5.836
01 Sep 2022 - 01 Sep 2022	MYEG	ASIA INTERNET HOLDINGS SDN. BHD. [SSH]	-21,000		1,365,974	18.505
30 Aug 2022 - 30 Aug 2022	MYEG	KUMPULAN WANG PERSARAAN (DIPERBADANKAN) [SSH]	607		524,202	7.101
01 Sep 2022 - 01 Sep 2022	MYNEWS	MR DANG TAI HOCK [DIR/CEO]	40		397,356	58.25
01 Sep 2022 - 01 Sep 2022	MYNEWS	MR DANG TAI WEN [SSH]	40		397,356	58.25
01 Sep 2022 - 01 Sep 2022	MYNEWS	MR DANG TAI LUK [SSH]	40		397,356	58.25
01 Sep 2022 - 01 Sep 2022	MYNEWS	MR DANG TAI HOCK [SSH]	40		397,356	58.25
01 Sep 2022 - 01 Sep 2022	MYNEWS	MR DANG TAI LUK [DIR/CEO]	40		397,356	58.25
30 Aug 2022 - 30 Aug 2022	MYNEWS	MR DANG TAI HOCK [DIR/CEO]	195		397,316	58.244
30 Aug 2022 - 30 Aug 2022	MYNEWS	MR DANG TAI WEN [SSH]	195		397,316	58.244
30 Aug 2022 - 30 Aug 2022	MYNEWS	MR DANG TAI LUK [SSH]	195		397,316	58.244
30 Aug 2022 - 30 Aug 2022	MYNEWS	MR DANG TAI HOCK [SSH]	195		397,316	58.244
30 Aug 2022 - 30 Aug 2022	MYNEWS	MR DANG TAI LUK [DIR/CEO]	195		397,316	58.244
26 Aug 2022 - 26 Aug 2022	MYNEWS	MR DANG TAI HOCK [SSH]	385		397,120	58.216
26 Aug 2022 - 26 Aug 2022	MYNEWS	MR DANG TAI LUK [DIR/CEO]	385		397,120	58.216
26 Aug 2022 - 26 Aug 2022	MYNEWS	MR DANG TAI HOCK [DIR/CEO]	385		397,120	58.216
26 Aug 2022 - 26 Aug 2022	MYNEWS	MR DANG TAI WEN [SSH]	385		397,120	58.216
26 Aug 2022 - 26 Aug 2022	MYNEWS	MR DANG TAI LUK [SSH]	385		397,120	58.216
01 Sep 2022 - 01 Sep 2022	NESTCON	ENCIK MOHD NOOR BIN SETAPA [DIR/CEO]	-20		480	0.075
01 Sep 2022 - 01 Sep 2022	NESTCON	ENCIK NOR AZZAM BIN ABDUL JALIL [DIR/CEO]	-60		115	0.018
29 Aug 2022 - 29 Aug 2022	NESTLE	EMPLOYEES PROVIDENT FUND BOARD [SSH]	-13		21,085	8.992
26 Aug 2022 - 26 Aug 2022	NESTLE	EMPLOYEES PROVIDENT FUND BOARD [SSH]	-9		21,098	8.997
25 Aug 2022 - 25 Aug 2022	NESTLE	EMPLOYEES PROVIDENT FUND BOARD [SSH]	-10		21,107	9.001
24 Aug 2022 - 24 Aug 2022	NESTLE	EMPLOYEES PROVIDENT FUND BOARD [SSH]	-0.7		21,117	9.005
26 Aug 2022 - 26 Aug 2022	NIHSIN-PA	MISS KHOO WUAN RU [DIR/CEO]	-4,500		203,562	32.853
22 Aug 2022 - 22 Aug 2022	NWP	DATO' SRI KEE SOON LING [SSH]	-2,000		41,055	7.799
02 Sep 2022 - 02 Sep 2022	OLYMPIA	TAN SRI DATO' YAP YONG SEONG [DIR/CEO]	199,840		538,469	52.615
02 Sep 2022 - 02						

Notice Period is 28 August 2022 - 03 September 2022					
Effective Change Date	Stock Name	Buyer/ Seller Name [Classification]	Bought / (Sold) ['000]	No. of Shares After Trade ['000]	
			Total	Total	% Held
24 Aug 2022 - 24 Aug 2022	PPB	EMPLOYEES PROVIDENT FUND BOARD [SSH]	-227	157,079	11.042
29 Aug 2022 - 29 Aug 2022	QL	EMPLOYEES PROVIDENT FUND BOARD [SSH]	-875	144,429	5.935
24 Aug 2022 - 24 Aug 2022	QL	EMPLOYEES PROVIDENT FUND BOARD [SSH]	-997	145,303	5.971
29 Aug 2022 - 29 Aug 2022	RCECAP	TAN SRI AZMAN HASHIM [SSH]	65	427,752	58.413
29 Aug 2022 - 29 Aug 2022	RCECAP	CLEAR GOAL SDN BHD [SSH]	65	392,356	53.579
29 Aug 2022 - 29 Aug 2022	RCECAP	AMCORP GROUP BERHAD [SSH]	65	392,356	53.579
29 Aug 2022 - 29 Aug 2022	RCECAP	CEMPAKA EMPAYAR SDN BHD [SSH]	65	392,356	53.579
25 Aug 2022 - 25 Aug 2022	RCECAP	TAN SRI AZMAN HASHIM [SSH]	41	427,687	58.404
25 Aug 2022 - 25 Aug 2022	RCECAP	AMCORP GROUP BERHAD [SSH]	41	392,291	53.57
25 Aug 2022 - 25 Aug 2022	RCECAP	CLEAR GOAL SDN BHD [SSH]	41	392,291	53.57
25 Aug 2022 - 25 Aug 2022	RCECAP	CEMPAKA EMPAYAR SDN BHD [SSH]	41	392,291	53.57
30 Aug 2022 - 30 Aug 2022	REDTONE	TAN SRI DATO' SERI VINCENT TAN CHEE YIUON [SSH]	15,000	366,865	47.463
30 Aug 2022 - 30 Aug 2022	REDTONE	BERJAYA CORPORATION BERHAD [SSH]	15,000	366,865	47.463
30 Aug 2022 - 30 Aug 2022	REDTONE	JUARA SEJATI SDN. BHD. [SSH]	15,000	366,865	47.463
30 Aug 2022 - 30 Aug 2022	REDTONE	BERJAYA GROUP BERHAD [SSH]	15,000	366,865	47.463
01 Sep 2022 - 01 Sep 2022	RESINTC	DATIN GAN JEW [DIR/CEO]	44,756	51,401	52.881
01 Sep 2022 - 01 Sep 2022	RESINTC	DATO DR TEH KIM POO [DIR/CEO]	12,084	51,401	52.881
01 Sep 2022 - 01 Sep 2022	RESINTC	MR TEH LENG KANG [DIR/CEO]	1,350	6,585	6.775
01 Sep 2022 - 01 Sep 2022	RESINTC	MISS WEI HWEI HONG [DIR/CEO]	5,235	6,585	6.775
24 Aug 2022 - 24 Aug 2022	REX	DARMENDRAN A/L KUNARETNAM [DIR/CEO]	64,427	257,710	39.185
24 Aug 2022 - 24 Aug 2022	REX	MR DARMENDRAN A/L KUNARETNAM [SSH]	257,710	248,090	39.185
24 Aug 2022 - 24 Aug 2022	REX	DAIMAN TAIPAN SDN. BHD. [SSH]	174,310	174,310	26.504
24 Aug 2022 - 24 Aug 2022	REX	MR CHEE CHENG CHUN [SSH]	174,310	174,310	26.504
24 Aug 2022 - 24 Aug 2022	REX	CHEE CHENG CHUN [DIR/CEO]	43,578	174,310	26.504
24 Aug 2022 - 24 Aug 2022	REX	TAN SRI DATO' MOHD IBRAHIM BIN MOHD ZAIN [DIR/CEO]	2,354	9,416	1.432
24 Aug 2022 - 24 Aug 2022	REX-WA	DARMENDRAN A/L KUNARETNAM [DIR/CEO]	21,476	21,476	39.185
24 Aug 2022 - 24 Aug 2022	REX-WA	CHEE CHENG CHUN [DIR/CEO]	14,526	14,526	26.504
24 Aug 2022 - 24 Aug 2022	REX-WA	TAN SRI DATO' MOHD IBRAHIM BIN MOHD ZAIN [DIR/CEO]	785	785	1.432
29 Aug 2022 - 29 Aug 2022	RHBBANK	EMPLOYEES PROVIDENT FUND BOARD [SSH]	-1,500	1,758,211	41.742
26 Aug 2022 - 26 Aug 2022	RHBBANK	EMPLOYEES PROVIDENT FUND BOARD [SSH]	-2,695	1,759,711	41.778
25 Aug 2022 - 25 Aug 2022	RHBBANK	EMPLOYEES PROVIDENT FUND BOARD [SSH]	-2,664	1,762,406	41.842
26 Aug 2022 - 26 Aug 2022	RHBBANK	KUMPULAN WANG PERSARAAN (DIPERBADANKAN) [SSH]	-500	222,429	5.28
24 Aug 2022 - 24 Aug 2022	RHBBANK	EMPLOYEES PROVIDENT FUND BOARD [SSH]	-978	1,765,070	41.905
02 Sep 2022 - 02 Sep 2022	RHONEMA	DR LIM BAN KEONG [SSH]	34	85,898	38.828
02 Sep 2022 - 02 Sep 2022	RHONEMA	DR LIM BAN KEONG [DIR/CEO]	34	85,898	38.828
01 Sep 2022 - 01 Sep 2022	RHONEMA	DR LIM BAN KEONG [SSH]	24	85,863	38.813
01 Sep 2022 - 01 Sep 2022	RHONEMA	DR LIM BAN KEONG [DIR/CEO]	24	85,863	38.813
30 Aug 2022 - 30 Aug 2022	SAPIND	MR KOH KOK HOOI [SSH]	5	5,233	7.19
29 Aug 2022 - 29 Aug 2022	SAPIND	MR KOH KOK HOOI [SSH]	1	5,228	7.183
26 Aug 2022 - 26 Aug 2022	SAPIND	MR KOH KOK HOOI [SSH]	2	5,227	7.182
29 Aug 2022 - 30 Aug 2022	SDRED	MR LOONG CHING HONG [DIR/CEO]	7	2,649	0.62
01 Sep 2022 - 01 Sep 2022	SDS	MR TAN KIM SENG [DIR/CEO]	-400	102,832	25.104
01 Sep 2022 - 01 Sep 2022	SDS	MR TAN KIM SENG [SSH]	-400	102,832	25.104
01 Sep 2022 - 01 Sep 2022	SDS	MR TAN KIM CHAI [DIR/CEO]	-400	100,777	24.602
01 Sep 2022 - 01 Sep 2022	SDS	MR TAN KIM CHAI [SSH]	-400	100,777	24.602
29 Aug 2022 - 29 Aug 2022	SDS	MR TAN KIM SENG [SSH]	255	103,232	25.201
29 Aug 2022 - 29 Aug 2022	SDS	MR TAN KIM SENG [DIR/CEO]	255	103,232	25.201
01 Sep 2022 - 01 Sep 2022	SENFONG	MR ER HOCK LAI [SSH]	423	311,886	60.098
01 Sep 2022 - 01 Sep 2022	SENFONG	ER HOCK LAI [DIR/CEO]	423	311,886	60.098
01 Sep 2022 - 01 Sep 2022	SENFONG	SUMBER PANJI SDN. BHD. [SSH]	423	311,286	59.983
30 Aug 2022 - 30 Aug 2022	SENFONG	MR ER HOCK LAI [SSH]	459	311,463	60.017
30 Aug 2022 - 30 Aug 2022	SENFONG	MR ER HOCK LAI [DIR/CEO]	459	311,463	60.017
30 Aug 2022 - 30 Aug 2022	SENFONG	SUMBER PANJI SDN. BHD. [SSH]	459	310,863	59.901
29 Aug 2022 - 29 Aug 2022	SENFONG	MR ER HOCK LAI [SSH]	1,044	311,004	59.928
29 Aug 2022 - 29 Aug 2022	SENFONG	MR ER HOCK LAI [DIR/CEO]	1,044	311,004	59.928
29 Aug 2022 - 29 Aug 2022	SENFONG	SUMBER PANJI SDN. BHD. [SSH]	1,044	310,404	59.813
29 Aug 2022 - 29 Aug 2022	SERNKOU	MR LOW PENG SIAN @ CHUA PENG SIAN [DIR/CEO]	-4,000	108,510	47.868
01 Sep 2022 - 01 Sep 2022	SHH	SX CAPITAL SDN. BHD. [SSH]	7,855	16,206	16.207
29 Aug 2022 - 29 Aug 2022	SIME	EMPLOYEES PROVIDENT FUND BOARD [SSH]	-2,516	642,714	9.438
26 Aug 2022 - 26 Aug 2022	SIME	EMPLOYEES PROVIDENT FUND BOARD [SSH]	-2,250	645,230	9.475
26 Aug 2022 - 26 Aug 2022	SIME	AMANAHRAYA TRUSTEES BERHAD - AMANAH SAHAM BUMIPUTERA [SSH]	-2,047	2,730,953	40.103
25 Aug 2022 - 25 Aug 2022	SIME	EMPLOYEES PROVIDENT FUND BOARD [SSH]	-1,191	647,480	9.508
26 Aug 2022 - 26 Aug 2022	SIME	KUMPULAN WANG PERSARAAN (DIPERBADANKAN) [SSH]	2,000	525,090	7.711
25 Aug 2022 - 25 Aug 2022	SIME	AMANAHRAYA TRUSTEES BERHAD - AMANAH SAHAM BUMIPUTERA [SSH]	-3,000	2,733,000	40.133
24 Aug 2022 - 24 Aug 2022	SIME	AMANAHRAYA TRUSTEES BERHAD - AMANAH SAHAM BUMIPUTERA [SSH]	-2,000	2,736,000	40.177
24 Aug 2022 - 24 Aug 2022	SIME	EMPLOYEES PROVIDENT FUND BOARD [SSH]	-867	648,671	9.526
23 Aug 2022 - 23 Aug 2022	SIME	EMPLOYEES PROVIDENT FUND BOARD [SSH]	-1,400	649,538	9.538
26 Aug 2022 - 26 Aug 2022	SIMEPROP	EMPLOYEES PROVIDENT FUND BOARD [SSH]	-600	618,648	9.096
24 Aug 2022 - 24 Aug 2022	SIMEPROP	EMPLOYEES PROVIDENT FUND BOARD [SSH]	-500	619,248	9.105
01 Sep 2022 - 01 Sep 2022	SKPRES	KUMPULAN WANG PERSARAAN (DIPERBADANKAN) [SSH]	-1,000	135,890	8.698
26 Aug 2022 - 26 Aug 2022	SKPRES	EMPLOYEES PROVIDENT FUND BOARD [SSH]	956	86,046	5.507
25 Aug 2022 - 25 Aug 2022	SKPRES	EMPLOYEES PROVIDENT FUND BOARD [SSH]	946	85,090	5.446
01 Sep 2022 - 01 Sep 2022	SNS	MR KO YUN HUNG [SSH]	24,192	526,902	32.671
01 Sep 2022 - 01 Sep 2022	SNS	MR KO YUN HUNG [DIR/CEO]	24,192	526,902	32.671
01 Sep 2022 - 01 Sep 2022	SNS	MR PAH WAI ONN [DIR/CEO]	24,192	526,902	32.671
01 Sep 2022 - 01 Sep 2022	SNS	MR PAH WAI ONN [SSH]	24,192	526,902	32.671
24 Aug 2022 - 24 Aug 2022	SUNCON	EMPLOYEES PROVIDENT FUND BOARD [SSH]	136	119,518	9.27
26 Aug 2022 - 26 Aug 2022	SUNWAY	TAN SRI DATO' SERI DR JEFFREY CHEAH FOOK LING AO [DIR/CEO]	8,121	3,107,330	63.56
26 Aug 2022 - 26 Aug 2022	SUNWAY	TAN SRI DATO' SERI DR JEFFREY CHEAH FOOK LING AO [SSH]	8,121	3,107,330	63.56
26 Aug 2022 - 26 Aug 2022	SUNWAY	PUAN SRI DATIN SERI (DR) SUSAN CHEAH SEOK CHENG [SSH]	8,121	3,107,330	63.56
26 Aug 2022 - 26 Aug 2022	SUNWAY	MADAM SARENA CHEAH YEAN TIH [SSH]	8,121	3,103,138	63.47
26 Aug 2022 - 26 Aug 2022	SUNWAY	MADAM SARENA CHEAH YEAN TIH [DIR/CEO]	8,121	3,103,138	63.47
26 Aug 2022 - 26 Aug 2022	SUNWAY	MR EVAN CHEAH YEAN SHIN [SSH]	8,121	3,102,082	63.45
26 Aug 2022 - 26 Aug 2022	SUNWAY	MR ADRIAN CHEAH YEAN SUN [SSH]	8,121	3,097,887	63.36
26 Aug 2022 - 26 Aug 2022	SUNWAY	EMPLOYEES PROVIDENT FUND BOARD [SSH]	-128	407,017	8.33

Notice Period is 28 August 2022 - 03 September 2022					
Effective Change Date	Stock Name	Buyer/ Seller Name [Classification]	Bought / (Sold) ['000]	No. of Shares After Trade ['000]	
			Total	Total	% Held
25 Aug 2022 - 25 Aug 2022	SUNWAY	EMPLOYEES PROVIDENT FUND BOARD [SSH]	189	407,145	8.33
24 Aug 2022 - 24 Aug 2022	SUNWAY	EMPLOYEES PROVIDENT FUND BOARD [SSH]	198	406,956	8.32
29 Aug 2022 - 29 Aug 2022	SUNWAY-PA	TAN SRI DATO' SERI DR JEFFREY CHEAH FOOK LING AO [DIR/CEO]	8,923	687,612	70.32
29 Aug 2022 - 29 Aug 2022	SUNWAY-PA	MADAM SARENA CHEAH YEAN TIH [DIR/CEO]	8,923	686,783	70.24
25 Aug 2022 - 26 Aug 2022	TAFI	DATO' SRI ANDREW LIM ENG GUAN [SSH]	-560	198,640	52.353
25 Aug 2022 - 26 Aug 2022	TAFI	DATO' SRI ANDREW LIM ENG GUAN [DIR/CEO]	-560	198,640	52.353
25 Aug 2022 - 26 Aug 2022	TAFI	DATO' SRI WONG SZE CHIEN [DIR/CEO]	-560	198,614	52.346
25 Aug 2022 - 26 Aug 2022	TAFI	DATO' SRI WONG SZE CHIEN [SSH]	-560	198,614	52.346
25 Aug 2022 - 26 Aug 2022	TAFI	DATO' SRI AZLAN BIN AZMI [SSH]	-560	194,189	51.179
25 Aug 2022 - 26 Aug 2022	TAFI	DATO' SRI AZLAN BIN AZMI [DIR/CEO]	-560	194,189	51.179
25 Aug 2022 - 26 Aug 2022	TAFI	ARMANI SYNERGY SDN. BHD. [SSH]	-560	194,024	51.136
29 Aug 2022 - 29 Aug 2022	TAKAFUL	EMPLOYEES PROVIDENT FUND BOARD [SSH]	408	97,472	11.641
25 Aug 2022 - 25 Aug 2022	TAKAFUL	EMPLOYEES PROVIDENT FUND BOARD [SSH]	243	97,064	11.592
24 Aug 2022 - 24 Aug 2022	TAKAFUL	EMPLOYEES PROVIDENT FUND BOARD [SSH]	1	96,821	11.563
25 Aug 2022 - 25 Aug 2022	TALIWRK	LEMBAGA TABUNG HAJI [SSH]	-220	155,597	7.719
26 Aug 2022 - 26 Aug 2022	TANCO	DATO' SRI ANDREW TAN JUN SUAN [DIR/CEO]	338,030	472,280	53.468
26 Aug 2022 - 26 Aug 2022	TENAGA	EMPLOYEES PROVIDENT FUND BOARD [SSH]	-148	901,024	15.66
29 Aug 2022 - 29 Aug 2022	TIMECOM	EMPLOYEES PROVIDENT FUND BOARD [SSH]	-172	182,396	9.931
30 Aug 2022 - 30 Aug 2022	TIMECOM	KUMPULAN WANG PERSARAAN (DIPERBADANKAN) ("KWAP") [SSH]	453	100,014	5.446
26 Aug 2022 - 26 Aug 2022	TIMECOM	EMPLOYEES PROVIDENT FUND BOARD [SSH]	126	182,569	9.941
25 Aug 2022 - 25 Aug 2022	TIMECOM	EMPLOYEES PROVIDENT FUND BOARD [SSH]	-264	182,443	9.934
24 Aug 2022 - 24 Aug 2022	TIMECOM	EMPLOYEES PROVIDENT FUND BOARD [SSH]	-507	182,707	9.948
29 Aug 2022 - 29 Aug 2022	TIMWELL	MADAM AGNES SOEI-TIN LAMEY [SSH]	20	6,038	6.78
29 Aug 2022 - 29 Aug 2022	TIMWELL	MADAM AGNES SOEI-TIN LAMEY [DIR/CEO]	20	6,038	6.78
01 Sep 2022 - 01 Sep 2022	TM	KUMPULAN WANG PERSARAAN (DIPERBADANKAN) [SSH]	-827	395,092	10.431
29 Aug 2022 - 29 Aug 2022	TM	EMPLOYEE PROVIDENT FUND BOARD (EPF BOARD) [SSH]	-1,687	704,587	18.602
30 Aug 2022 - 30 Aug 2022	TM	KUMPULAN WANG PERSARAAN (DIPERBADANKAN) [SSH]	33	395,919	10.452
26 Aug 2022 - 26 Aug 2022	TM	EMPLOYEE PROVIDENT FUND BOARD (EPF BOARD) [SSH]	-811	706,274	18.647
29 Aug 2022 - 29 Aug 2022	TM	KUMPULAN WANG PERSARAAN (DIPERBADANKAN) [SSH]	128	395,886	10.452
25 Aug 2022 - 25 Aug 2022	TM	EMPLOYEE PROVIDENT FUND BOARD (EPF BOARD) [SSH]	-831	707,085	18.668
24 Aug 2022 - 24 Aug 2022	TM	KUMPULAN WANG PERSARAAN (EPF BOARD) [SSH]	202	707,916	18.69
30 Aug 2022 - 30 Aug 2022	TOPGLOV	PUAN SRI TONG SIEW BEE [SSH]	1,200	2,893,535	36.137
30 Aug 2022 - 30 Aug 2022	TOPGLOV	TAN SRI DR LIM WEE CHAI [DIR/CEO]	1,200	2,893,535	36.137
30 Aug 2022 - 30 Aug 2022	TOPGLOV	TAN SRI DR LIM WEE CHAI [DIR/CEO]	1,200	2,893,535	36.137
30 Aug 2022 - 30 Aug 2022	TOPGLOV	MR LIM HOOI SIN [SSH]	1,200	2,893,335	36.135
30 Aug 2022 - 30 Aug 2022	TOPGLOV	MR LIM HOOI SIN [DIR/CEO]	1,200	2,893,335	36.135
30 Aug 2022 - 30 Aug 2022	TOPGLOV	MR LIM JIN FENG [SSH]	1,200	2,793,473	34.887
06 Oct 2021 - 06 Oct 2021	TOYOVEN	ENCIK TUAN HJ. IR. YUSOFF BIN DAUD [DIR/CEO]	-0.1	281	0.239
02 Sep 2022 - 02 Sep 2022	TRC	TAN SRI DR AHMAD KAMARULZAMAN BIN HJ AHMAD BADARUDDIN [DIR/CEO]	600	600	0.127
02 Sep 2022 - 02 Sep 2022	TSH	TAN AIK PEN [DIR/CEO]	550	298,199	21.606
01 Sep 2022 - 01 Sep 2022	TSH	TAN AIK PEN [SSH]	500	297,649	21.566
01 Sep 2022 - 01 Sep 2022	TSH	TAN AIK PEN [DIR/CEO]	500	297,649	21.566
30 Aug 2022 - 30 Aug 2022	TSH	TAN AIK PEN [SSH]	500	297,149	21.53
30 Aug 2022 - 30 Aug 2022	TSH	TAN AIK PEN [DIR/CEO]	500	297,149	21.53
29 Aug 2022 - 29 Aug 2022	TSH	TAN AIK PEN [SSH]	500	296,649	21.494
29 Aug 2022 - 29 Aug 2022	TSH	TAN AIK PEN [DIR/CEO]	500	296,649	21.494
26 Aug 2022 - 26 Aug 2022	TSH	TAN AIK PEN [SSH]	500	296,149	21.457
26 Aug 2022 - 26 Aug 2022	UMW	EMPLOYEES PROVIDENT FUND BOARD [SSH]	100	145,230	12.431
25 Aug 2022 - 25 Aug 2022	UMW	EMPLOYEES PROVIDENT FUND BOARD [SSH]	37	145,129	12.422
24 Aug 2022 - 24 Aug 2022	UMW	EMPLOYEES PROVIDENT FUND BOARD [SSH]	60	145,092	12.419
01 Jul 2022 - 01 Jul 2022	UNITRAD	DATO' LOK BAH BAH @ LOH YEOW BOO [DIR/CEO]	-50	150	0.01
26 Aug 2022 - 26 Aug 2022	UOADEV	EMPLOYEES PROVIDENT FUND BOARD ("EPF BOARD") [SSH]	237	248,172	10.309
25 Aug 2022 - 25 Aug 2022	UOADEV	EMPLOYEES PROVIDENT FUND BOARD ("EPF BOARD") [SSH]	300	247,936	10.299
29 Aug 2022 - 29 Aug 2022	UTDPLT	EMPLOYEES PROVIDENT FUND BOARD [SSH]	-165	38,699	9.33
26 Aug 2022 - 26 Aug 2022	UTDPLT	EMPLOYEES PROVIDENT FUND BOARD [SSH]	-18	38,864	9.37
24 Aug 2022 - 24 Aug 2022	UTDPLT	EMPLOYEES PROVIDENT FUND BOARD [SSH]	1,000	38,883	9.374
25 Aug 2022 - 25 Aug 2022	UWC	EMPLOYEES PROVIDENT FUND BOARD [SSH]	-237	76,924	



## ADVANCE SYNERGY BERHAD

On behalf of the Board of Advance Synergy Berhad (**ASB**), KAF IB wishes to announce that the Company has fixed the Issue Price of the Rights Shares at RM0.05 each. The Issue Price represents a discount RM0.0147 or 22.72% to the TERP of RM0.0647 per Share, calculated based on the five day Volume-Weighted Average Price of ASB Shares up to and including 1 September 2022, being the last trading day before the price-fixing date of the Rights Shares of RM0.0940 per Share.



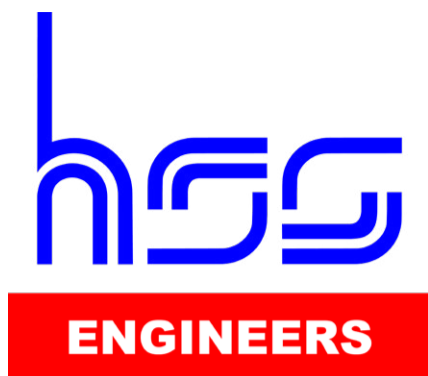
## CAPITALAND MALAYSIA TRUST

The Board of Directors  
of CapitaLand  
Malaysia REIT

Management, the manager of CapitaLand Malaysia Trust (formerly known as CapitaLand Malaysia Mall Trust) (**CLMT**), wishes to announce that the registration of the transfer of 30% equity interest in CapitaLand Malaysia REIT Management from Malaysian Industrial Development Finance Bhd to CLI has been completed. Accordingly, CapitaLand Malaysia REIT Management is now a wholly-owned subsidiary of CLI.







# HSS ENGINEERS BERHAD

HSS Engineers Berhad (**HSSEB**) wishes to announce that SMHB Sdn Bhd, an associate of HSS Engineers Berhad, has accepted a Letter of Appointment from Pengurusan Aset Air Berhad appointing SMHB Sdn Bhd as the engineering consultant for the Services. The scope of services under the Services is to provide design and construction supervision.



KEJURUTERAAB ASASTERA BERHAD

# KEJURUTERAAN ASASTERA BERHAD

On behalf of the Board of Directors of Kejuruteraan Asastera Berhad (**KAB**), Kenanga Investment Bank Berhad wishes to announce that the Company proposes to undertake the following proposals:-

- (i) diversification of the business of Kejuruteraan Asastera Berhad and its subsidiaries to include the provision of sustainable energy solutions; and
- (ii) private placement of up to 351,581,000 new ordinary shares in the KAB Shares, representing up to 20% of the total number of issued Shares, to independent third party investors to be identified later at an issue price to be determined later.



## **KKB ENGINEERING BERHAD**

The Board of Directors of KKB Engineering Berhad (**KKB**) is pleased to announce that KKB has received a Letter of Sub-Contract Work: Supply, Fabricate, Painting & Installation of Structural Steel Works for the Proposed Glove Factory for Petchem Industrial Park, Tanjung Kidurong, Bintulu, Sarawak [Sarawak Medical Innovation & Technology Hub]. KKB has also received a Purchase Order for the C14 RQ Cylinders and C14 Compact Valve from MyGaz Sdn. Bhd.

The combined total contract sum for the abovementioned contracts is worth approximately RM17 million.



## **TELEKOM MALAYSIA BERHAD**

On behalf of the Board, CIMB Investment Bank Berhad wishes to announce that Telekom Malaysia Berhad (**TM**) had, on 5 September 2022, received the approval from Bursa Malaysia Securities Berhad for the listing of and quotation for up to 74,432,762 new TM Shares to be issued pursuant to the DRS in respect of the Interim Dividend, on the Main Market of Bursa Securities.



### **Upcoming IPO**

NAME OF COMPANY	OFFER PERIOD		ISSUE PRICE (Per Ordinary Share)	LISTING SOUGHT	DATE OF LISTING
	OPENING	CLOSING			
<b>SNS NETWORK TECHNOLOGY BERHAD</b>	27 July 2022	18 Aug 2022	RM1.15	ACE MARKET	2 Sep 2022
<b>AME REAL ESTATE INVESTMENT TRUST</b>	17 Aug 2022	24 Aug 2022	RM0.25	MAIN MARKET	20 Sep 2022

**Disclaimer:** The information in the investor relations page is extracted from individual companies' announcements in www.bursamalaysia.com. The information on this page is provided as a service to readers. We assume no liability for damages resulting from or arising out of the use of such information. Whilst every effort is made to ensure accuracy, the information presented has been simplified for your reading pleasure. Readers are advised to read the original and complete filings on the Bursa Malaysia website at [https://www.bursamalaysia.com/market\\_information/announcements/company\\_announcement](https://www.bursamalaysia.com/market_information/announcements/company_announcement)

ShareInvestor is a technology based company with a focus on Internet media and we have operations in Malaysia, Singapore and Thailand.

We are the market leader in providing a combination of market data, analysis and news on various platforms to traders and investors.

Our websites include [www.shareinvestor.com](http://www.shareinvestor.com) and [www.bursastation.com](http://www.bursastation.com).  
More information about our products and services can be found at [www.shareinvestorholdings.com](http://www.shareinvestorholdings.com)

**We're looking for Drupal Developers who will be in charge of front-end development and back-end/module development. This role requires expertise in PHP, HTML, CSS, JS, and an eye for design aesthetics. The candidates should be familiar and have a passion working with content management systems.**

Interested candidates are encouraged to apply with full resume, present and expected salary and a recent photograph. Please send these to [hr.my@shareinvestor.com](mailto:hr.my@shareinvestor.com) for processing. ShareInvestor regrets that only shortlisted candidates shall be notified.

## Drupal Developers (2 vacancies)

### Job Responsibilities:

- Active participation in all UI / UX decisions
- Contribute actively to the continuous development and maintenance of development projects
- Enhance Drupal development quality
- Provide solutions to issues and suggestions for improvements.
- Designing and implementing new features to the system
- Ensuring optimal performance

### Required Skills:

- At least 3 years of Drupal Theming and Front-End Development experience
- Proficient in PHP, HTML5/XHTML, CSS, Javascript, jQuery, AJAX, XML, Json
- Good Diploma/Degree in Computer Science/Computer Engineering.
- Experience working with Drupal's main modules, such as CTools, Views, Rules, Webform, and so on
- Ability to create custom Drupal modules
- Strong troubleshooting skills to fix bugs

### Benefits:

- Career & growth opportunities
- Interesting projects
- Medical Insurance
- Incentives

## Ruby on Rails Developer (1 vacancy)

### Job Responsibilities:

- Develop quality web-based software modules on schedule with a focus on Ruby and Ruby on Rails applications.
- Explore and utilize the latest web-based technologies.
- Document design specifications, logic concepts and module description.
- Maintain and enhance existing web-based applications.

### Required Skills:

- Experience in web-based programming/scripting is essential. Candidate must be able to explain clearly technical aspects of his/her past experiences and projects.
- Passion for programming and desire to learn new languages like Go.
- Good Diploma/Degree in Computer Science/Computer Engineering.
- Able to work well in a team and be able to follow documentation and coding standards.
- Knowledge in any of the following would be an added advantage
  - Ruby and Ruby on Rails Framework
  - Javascript and jQuery library
  - Go
  - Perl

## Application Developer (C++/STL) (1 vacancy)

**Job Responsibilities**

- Deliver quality software modules on schedule.
- Document design specifications, conceptions, module description.
- Maintain and enhance existing applications.

**Required Skills:**

- Passion for programming and desire to learn.
- Good Diploma/Degree in Computer Science/Computer Engineering.
- Skills in C++ is essential.
- Experience with Visual Studio, networking stack and Golang would be an advantage.
- Proactive, resourceful and self-motivated with strong analytical skills.
- Good interpersonal, written and communication skills.
- Able to work with little supervision.

## Graphic Designer (1 vacancy)

**Job Responsibilities**

- Conceptualise and create visual artwork for inhouse publications, promotional posters, web banners, social media posts, infographics, and other marketing collaterals
- Understand creative directions and objectives
- Experienced in desktop publishing
- Meticulous with housekeeping and good organisational skills to manage design assets

**Required Skills**

- Diploma / Degree in Advertising/Visual Communications, Graphic Design or equivalent
- Minimum 2 years of Designer experience
- Highly proficient with Adobe CC apps (Adobe InDesign, Illustrator, Photoshop, etc) and Microsoft Office software
- Proven experience in graphic design with a strong portfolio
- Video production and web design experience will be an advantage

## Marketing Executive (1 vacancy)

**Job Responsibilities**

- Assist MarCom Manager in all marketing undertakings
- Coordinating with all relevant parties to ensure timely delivery of projects
- Manage social media assets and digital marketing campaigns
- Execution of online & on-ground events

**Required Skills**

- Graduate with Degree/Diploma in any Marketing disciplines.
- Minimum 1 year experience
- Excellent command of English and BM, both written and spoken.
- Familiar with digital platforms. (Google, Facebook, YouTube, LinkedIn, Instagram, WhatsApp and Telegram).

Interested candidates are encouraged to apply with full resume, present and expected salary and a recent photograph. Please send these to [hr.my@shareinvestor.com](mailto:hr.my@shareinvestor.com) for processing. ShareInvestor regrets that only shortlisted candidates shall be notified.