

Invest

A Weekly e-Publication by SHAREINVESTOR.com



FREE
WEBINAR



SHOW ME THE MONEY
MARKET OUTLOOK 2H 2022

Getting Ready
for the Next

BIG WAVE

2 July 2022 | 9.30am to 12.30pm



Moderator
Roshan Kanesan
Jirnexu Advisory



Speaker
Nixon Wong
CIO, Tradeview Capital



Speaker
Ng Zhu Hann
*CEO, Tradeview
Capital & Author*

[REGISTER HERE](#)

Invest

A Weekly e-Publication by SHAREINVESTOR.com

ISSUE

112

FRIDAY
24 JUNE
2022

Scan/Click QR to Register



Via email, every Friday

LEADING INDEX (LI) SIGNIFIES BETTER ECONOMIC RECOVERY AHEAD FOR MALAYSIA - DOSM

- | | | | | | |
|----|----------------------------|----|-------------------|----|--------------------------|
| 03 | LEADERBOARD | 14 | GROWTH STOCKS | 24 | BEHIND THE ACTION |
| 05 | SHARIAH HOT STOCKS | 15 | DIVIDEND STOCKS | 28 | FROM THE OBSERVER |
| 06 | COMPANY SPOTLIGHT | 16 | BROKERS' CALL | 33 | INSIDER ACTIVITY |
| 08 | SHARIAH MOMENTUM UP STOCKS | 17 | LONG COMPANIES | 37 | INVESTOR RELATIONS |
| 10 | NON SHARIAH HOT STOCKS | 19 | MARKET SENTIMENTS | 40 | CAREERS AT SHAREINVESTOR |
| 12 | UP TRENDING STOCKS | 23 | REGIONAL MARKETS | | |



SHAREINVESTOR®

Invest with Knowledge

CORPORATE

Managing Director (Malaysia) & Publisher
Edward Stanislaus
edward@shareinvestor.com

SALES & MARKETING

Director
Elizabeth Tan
elizabeth.tan@shareinvestor.com

Online IR

Manager
Leticia Wong
leticia.wong@shareinvestor.com

Advertising & Sponsorship Sales

Manager
Sharon Lee
sharon.lee@shareinvestor.com

MARKET DATA ANALYTICS

(marketdata.my@shareinvestor.com)
Account Manager
Heidee Ahmad
heidee.ahmad@shareinvestor.com
Coordinator
Watie Nordin
watie.nordin@shareinvestor.com

MARKET DATA ANALYTICS & EDITORIAL

Market Data & Media Coordinator
Silas Emmanuel Joseph
silas.joseph@shareinvestor.com

MARKET DATA ANALYTICS & EDITORIAL

Market Data Analyst
Nickson Aw
nickson.aw@shareinvestor.com

MARKETING COMMUNICATIONS

Marcomm Manager
Danny Ng

CREATIVE & DESIGN

Manager		Andric See
Asst. Manager		Ivy Yap
Web Developer		Nurul Atiqah Aiman Jasmin Izwan Rusli

IT APPS

Project Manager		Amir Yusoff
Sr. Software Engineer		Mohd. Qasem
Software Engineer		Lian Kok Keong

FINANCE, ADMIN & HR

Manager		Shireen Goh
Sn. Accounts Executive		Jessie Ho
Accounts Assistant		Ng Jin Yng

SHAREINVESTOR HOLDINGS

Chairman		Patrick Daniel
Group CEO		Christopher Lee
Group COO		Lim Dau Hee
Group CFO		Teo Siew May

“ GIVE A MAN A FISH AND YOU FEED HIM FOR A DAY; TEACH A MAN TO FISH AND YOU FEED HIM FOR A LIFETIME ”

ShareInvestor Malaysia Sdn. Bhd. (200001023956) (526564-M)
(Formerly known as SI Portal.com Sdn. Bhd.)
Unit No. DF2-07-03A, Level 7,
Persoft Tower, 6B Persiaran Tropicana,
47410 Petaling Jaya, Selangor Darul Ehsan.

Hotline : 603 7803 1791
Mobile : 011 6343 8939
Fax : 603 7803 1792

Website : www.ShareInvestor.com.my
www.ShareInvestorHoldings.com
www.Facebook.com/ShareInvestorMalaysia

ADVERTISEMENT ENQUIRY

**SHAREINVESTOR
WEBPRO**

C² CHART

C² Chart is WebPro's new feature-packed technical analysis tool for the modern stock investor



Over 100 Indicators
Select your preferred indicators to best suit your technical strategies



Drawing Tools
Multiple drawing tools to easily identify chart patterns



Events Indicators
Key events can be pinned onto your charts for a better overview



Compare Tool
Conveniently compare multiple stock prices at the same time



Historical Data
Extract price data from over 30 years



Over 10 Chart Styles
Various charts to suit your preferred style



No App Needed
Access your charts from any computer or mobile



Easy Zoom
Intuitive zooming function on charts

www.shareinvestor.com - market data at your fingertips



ShareInvestor WebPro (www.shareinvestor.com/my) Prices > Stock Prices > Bursa > click Stocks tab

1. mouse over Ranking > select Top Active > all Shariah stocks are denoted with an [S] > mouse over Column Layout > select Edit Customs > select Name > select Volume > select Last Done Price > Mouse Over Column Layout > select Custom
2. mouse over Ranking > select Top Turnover > all Shariah stocks are denoted with an [S] > mouse over Column Layout > select Edit Customs > select Name > select Last Done Price > select Value > Mouse Over Column Layout > select Custom
3. mouse over Ranking > select Top Gainers (Over 5 Trading Days) > mouse over Column Layout > select Edit Customs > select Name > select Last Done Price > select 5 Days Change > select 5 Days % Change > Mouse Over Column Layout > select Custom
4. mouse over Ranking > select Top Losers (Over 5 Trading Days)
5. mouse over Ranking > select Top % Gainers (Over 5 Trading Days)
6. mouse over Ranking > select Top % Losers (Over 5 Trading Days)

Shariah Top Actives (as at Yesterday)

Name	Price (RM)	Volume
HIBISCS [S]	0.935	962,182
YONGTAI [S]	0.090	586,873
DNEX [S]	0.755	580,458
WIDAD [S]	0.370	390,095
DATAPRP [S]	0.195	369,849
MNC [S]	0.015	365,392
NWP [S]	0.265	359,386
GPACKET [S]	0.060	356,194
KNM [S]	0.125	309,444
TOPGLOV [S]	1.050	262,607

Shariah Top Turnover (as at Yesterday)

Name	Price (RM)	Value (RM)
PCHEM [S]	9.150	111,344,825
HIBISCS [S]	0.935	91,281,660
DNEX [S]	0.755	44,373,357
IHH [S]	6.360	43,529,483
KLK [S]	22.840	38,268,358
TENAGA [S]	8.160	33,128,361
TOPGLOV [S]	1.050	27,352,534
MISC [S]	7.000	25,836,022
PMETAL [S]	4.630	24,978,134
SIMEPLT [S]	4.290	22,838,580

Top Gainers (over 5 Trading days as at Yesterday)

Name	Price (RM)	Change (RM)
HONGSENG	1.560	+0.735
YNHPROP	3.380	+0.170
APEX	1.020	+0.150
TAFI	0.490	+0.145
CYPARK	0.420	+0.135
GREATEC	3.570	+0.130
BURSA	6.520	+0.120
UWC	3.170	+0.110
BOXPAK	1.300	+0.100
KEINHIN	1.060	+0.090

Top % Gainers (over 5 Trading days as at Yesterday)

Name	Price (RM)	Change (%)
HONGSENG	1.560	+89.09
NEXGRAM	0.015	+50.00
VERTICE	0.150	+50.00
CYPARK	0.420	+47.37
TAFI	0.490	+42.03
DGB	0.020	+33.33
PASUKGB	0.020	+33.33
LAYHONG	0.300	+25.00
MLAB	0.025	+25.00
CATCHA	0.195	+21.88

Top Losers (over 5 Trading days as at Yesterday)

Name	Price (RM)	Change (RM)
NESTLE	132.800	-7.200
MPI	27.200	-2.500
KLK	22.840	-1.200
AEONCR	13.220	-1.140
PETRONM	5.400	-0.960
HLFG	18.220	-0.880
BKAWAN	22.900	-0.840
CHINTEK	8.850	-0.800
PPB	15.140	-0.660
KESM	6.290	-0.610

Top % Losers (over 5 Trading days as at Yesterday)

Name	Price (RM)	Change (%)
FAST	0.025	-37.50
ANZO	0.010	-33.33
AT	0.010	-33.33
BARAKAH	0.025	-28.57
SMI	0.250	-28.57
DESTINI	0.120	-27.27
EATECH	0.030	-25.00
GOCEAN	0.015	-25.00
M&G	0.070	-22.22
HIBISCS	0.935	-20.09

PURNELL

O N L Y T O U R B I L L O N



ESCAPE II
FORGED CARBON

Purnell Asia

Tel. : +65.9817.3378

Email : sales.sg@purnellwatches.com

@ Purnell_Official

www.purnellwatches.com

PLAY



Price & Volume Distribution Charts (as at Yesterday)

Technical Analysis

DEFINITION: Shariah compliant stocks with Technical Analysis showing 5-days & 10-days Moving Average Price below Yesterday's Close over past 3 days and with Volume Spike.

CHART GUIDE: Volume Distribution Chart is a statistical interpretation of the current sentiment on each stock in graphical format. The highest bar categorized as >150k is likely to be traded by institutions or super dealers, while the lowest bar categorized as <15k usually represents retail investors. "Buy Up" refers to more buyers snatching up the lots queued at selling price. "Sell Down" refers to sellers selling their shares to the buying queue



ShareInvestor WebPro > Screener > Market Screener (FA & TA) > select BURSA > add criteria

A. Criteria

- > click Add Criteria
- Technical Analysis Conditions tab select (i) Moving Average Below Close (ii) Volume Spike
- Fundamental Analysis Conditions tab > select (iii) Revenue
- Prices & Other Conditions tab > select (iv) Is Shariah Compliant
- Technical Analysis Conditions tab select (v) Moving Average Below Close
- Prices & Other Conditions tab > select (vi) Last Done Price
- Technical Analysis Conditions tab select (vii) Moving Average Below Close

B. Conditions (Criteria Filters)

1. Moving Average Below Close - select (MA) type (5) below close price for type (3) days
2. Volume Spike - Volume type (1) greater than type (5) days average
3. Revenue ("000) - select (more than) type (1) for the past select (1) financial year(s)
4. Is Shariah Compliant - select **Yes**
5. Moving Average Below Close - select (MA) type (10) below close price for type (3) days
6. Last Done Price - select (more than) type (0.3)
7. Moving Average Below Close - select (EMA) type (5) below close price for type (3) days

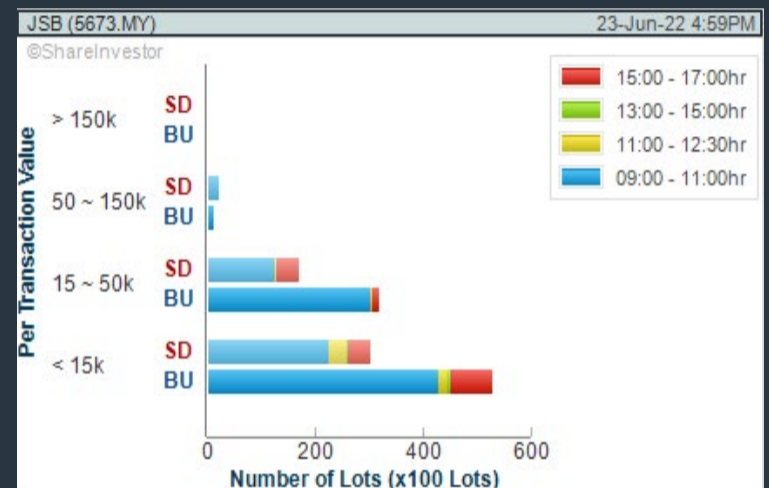
- > click Save Template > Create New Template type (Shariah Hot Stocks) > click Create
- > click Save Template as > select Shariah Hot Stocks > click Save
- > click Screen Now (may take a few minutes)
- > Sort By: Select (Vol) Select (Desc)
- > Mouse over stock name > Charts > click C² Charts or Volume Distribution

JENTAYU SUSTAINABLES BERHAD (5673)

C² Chart



Analysis

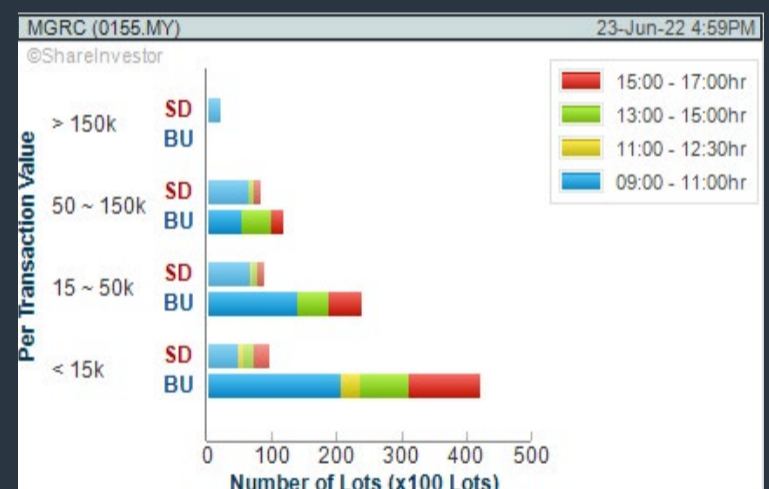


MSIAN GENOMICS RES CENTRE BERHAD (0155)

C² Chart



Analysis

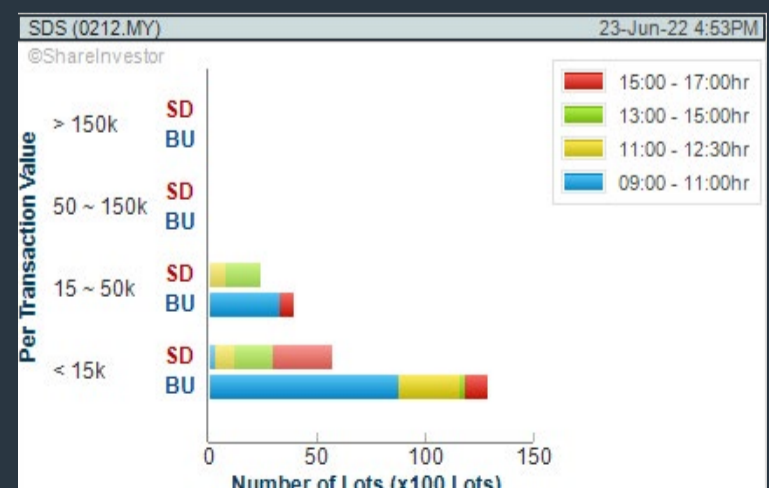


SDS GROUP BERHAD (0212)

C² Chart



Analysis



Disclaimer: The information on this page is provided as a service to readers. It does not constitute financial advice and/or any investment recommendations. Past performance is not indicative of future results. We assume no liability for damages resulting from or arising out of the use of such information. It would be best if you did your own research to make your personal investment decisions wisely or consult a licenced investment advisor.

COMPANY BACKGROUND

Jentayu Sustainables Berhad, (formerly Ipmuda Berhad), operates under three segments, namely renewable energy, healthcare, and trading. The Company provides clean energy solutions with its integrated technology. It offers ownership, operation, design, development, and maintenance of solar and small hydro plants, among others. The Company is also involved in the engineering, procurement, construction and commissioning of an approximately 100 megawatt (MW) solar photovoltaic (PV) plant in Terengganu. It also provides specialized private healthcare facilities and is involved in operating ancillary business



MUDAcare that helps in the distribution of medical products and disinfection services.

J SB JENTAYU SUSTAINABLES BERHAD		Updated at 23 Jun 2022 16:59	
Last (MYR): 0.440 ↑	Change: +0.020	High: 0.450	Remarks: -
Open: 0.420	Change (%): +4.76	Low: 0.415	Yesterday's Close: 0.420
Buy Price: 0.435		Yesterdays Close: 0.420	Sell Price: 0.440
Buy Volume ('00): 4,473		Sell Volume ('00): 5,161	Cumulative Value: 6,089,081
Cumulative Volume ('00): 140,189			

Financial Analysis

Revenue Growth Revenue down sharply in last 3 consecutive years (> 25%)	Profit Growth Losses for past 5 years
Piotroski F Score The company has weak financial strength (Piotroski F-Score of 0-2)	Debt to Cashflow The company has negative cash flow from operations in most recent year
Debt to Equity High debt to equity for most recent year	Free Cash Flow Negative free cash flow for two years or more
Gross Profit Margin Low gross profit margin for 3 years	Gross Profit Margin Gross profit margin is decreasing by 5% a year over the past 60 months.
Net Earnings Margin Company is losing money and margin is not improving.	Return on Assets (ROA) Negative ROA for 3 consecutive years
Return on Assets (ROA) ROA is improving by 10% a year over the past 36 months.	Return on Equity (ROE) Negative ROE for 3 consecutive years
Return on Equity (ROE) ROE is improving by 10% a year over the past 36 months.	

🟢 Excellent
🟡 Good
🟠 Neutral
🔴 Be Alert
🔴 Watch Out



Historical Financials

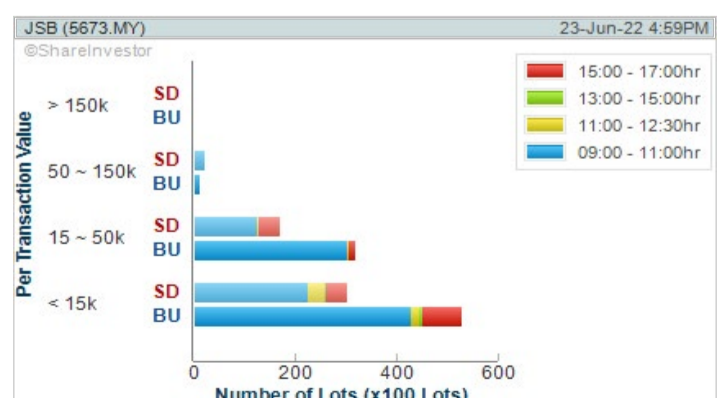


WebPro 9-Days Free Trial Registration (worth RM9) Sign Up Now



Key Statistics with Total Shareholder Returns

Period	Dividend Received	Capital Appreciation	Total Shareholder Return
Short Term Return	5 Days	+0.025	+6.02%
	10 Days	+0.080	+15.79%
	20 Days	+0.010	+2.33%
Medium Term Return	3 Months	-0.035	-7.37%
	6 Months	-0.389	-46.92%
	1 Year	-0.308	-41.02%
Long Term Return	2 Years	+0.333	+311.21%
	3 Years	+0.227	+106.57%
	5 Years	+0.102	+30.18%
Annualised Return	Annualised	-	+5.42%



Disclaimer: The information on this page is provided as a service to readers. It does not constitute financial advice and/or any investment recommendations. Past performance is not indicative of future results. We assume no liability for damages resulting from or arising out of the use of such information. It would be best if you did your own research to make your personal investment decisions wisely or consult a licenced investment advisor.

bulthaup takes care of the details so that you can enjoy a harmonious environment.



XTRA

XTRA FURNITURE SDN BHD
The Gardens Mall, Mid Valley City
2nd flr unit 236 + 237
E: kitchen@xtrafurniture.com, xtrafurniture.com/bulthaup
fb.com/bulthaupmalaysia

bulthaup

Price & Volume Distribution Charts (as at Yesterday)

Technical Analysis

DEFINITION: Shariah compliant stocks with Technical Analysis showing Bullish Momentum and Price Uptrend. The share price closed at the highest price yesterday. The typical price was higher than the previous day's typical price.

CHART GUIDE: Volume Distribution Chart is a statistical interpretation of the current sentiment on each stock in graphical format. The highest bar categorized as >150k is likely to be traded by institutions or super dealers, while the lowest bar categorized as <15k usually represents retail investors. "Buy Up" refers to more buyers snatching up the lots queued at selling price. "Sell Down" refers to sellers selling their shares to the buying queue.



ShareInvestor WebPro > Screener > Market Screener (FA & TA)>select BURSA>add criteria

A. Criteria

- > click Add Criteria
- Fundamental Analysis Conditions tab >select (i) Revenue
- Technical Analysis Conditions tab select (ii) Average Volume
- Prices & Other Conditions tab > select (iii) Last Done Price
- Prices & Other Conditions tab > select (iv) Is Shariah Compliant
- Technical Analysis Conditions tab select (v) RSI Overbought
- Technical Analysis Conditions tab select (vi) Moving Average Below Close
- Technical Analysis Conditions tab select (vii) CCI Overbought

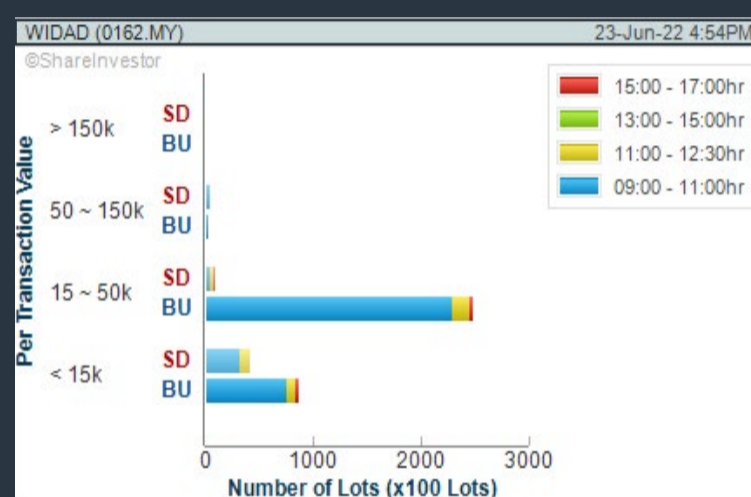
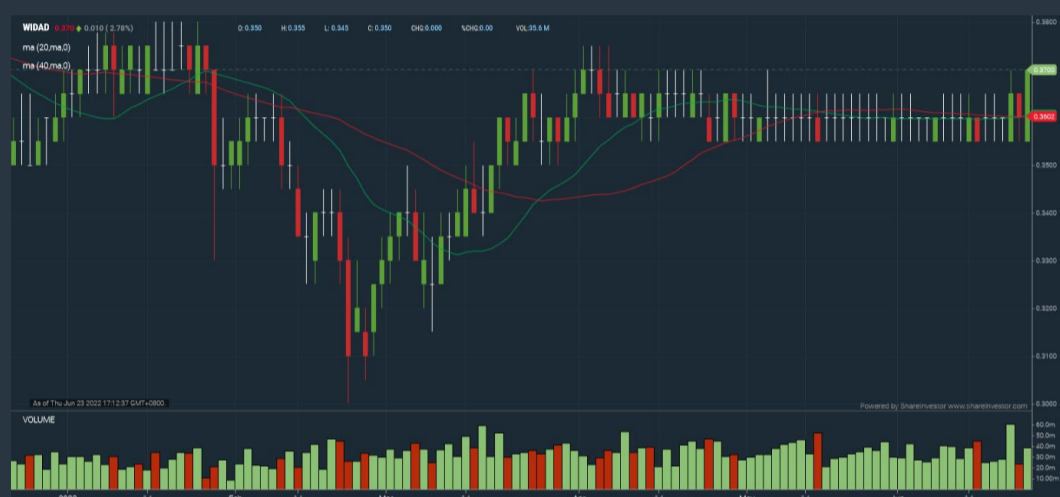
B. Conditions (Criteria Filters)

1. Revenue ("000) - select (more than) type (1) for the past select (1) financial year(s)
2. Average Volume - type (1) days average volume greater than type (10000) lots
3. Last Done Price - select (more than) type (0.3)
4. Is Shariah Compliant - select Yes
5. RSI Overbought - select RSI 1 above 99 for 1 days
6. Moving Average Below Close - select (MA) type (10) below close price for type (1) days
7. CCI Overbought - select CCI (2) above (0) for (1) days

- > click Save Template > Create New Template type (Shariah Momentum Up Stocks) > click Create
- > click Save Template as > select Shariah Momentum Up Stocks > click Save
- > click Screen Now (may take a few minutes)
- Sort By: Select (Vol) Select (Desc)
- Mouse over stock name > Charts > click C² Charts tab or Volume Distribution

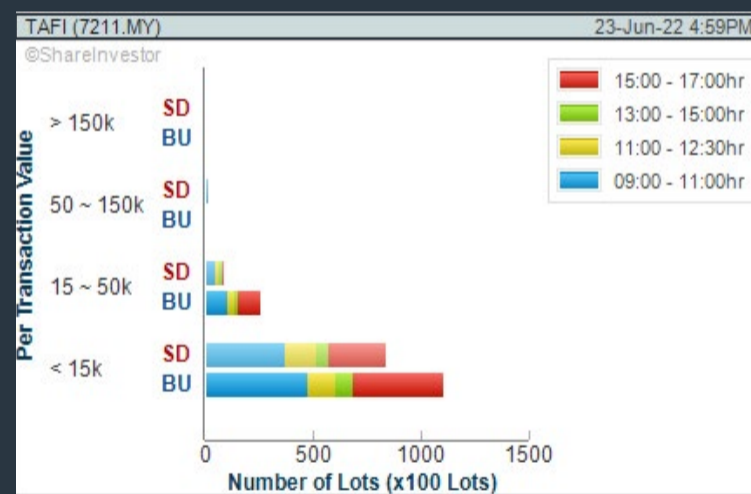
WIDAD GROUP BERHAD (0162) C² Chart

Analysis



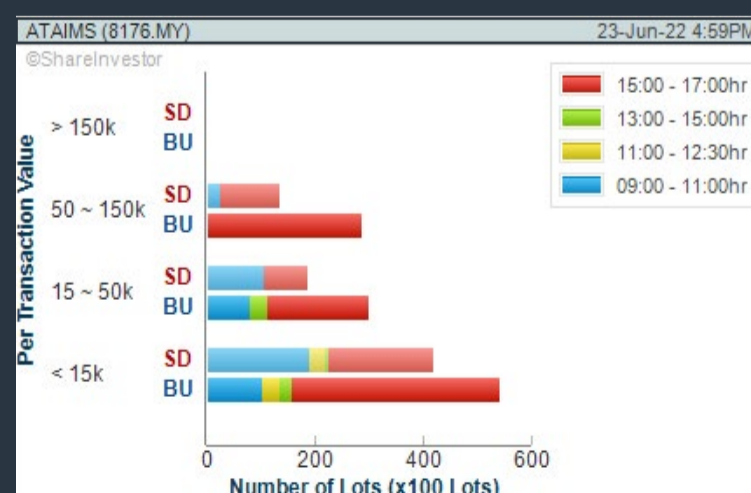
TAFI INDUSTRIES BHD (7211) C² Chart

Analysis



ATA IMS BERHAD (8176) C² Chart

Analysis



Disclaimer: The information on this page is provided as a service to readers. It does not constitute financial advice and/or any investment recommendations. Past performance is not indicative of future results. We assume no liability for damages resulting from or arising out of the use of such information. It would be best if you did your own research to make your personal investment decisions wisely or consult a licenced investment advisor.

Smiley Grid

**Are you struggling to analyse financial information?
Do you find financial data overwhelming?**

Worry not, introducing our NEW feature, Smiley Grid

Smiley Grid makes the Factsheet fast and easy to understand.

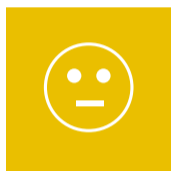
It is a shortcut where key financial data have now been interpreted for you, and presented in easy-to-understand, colour coded icons.



Excellent



Good



Neutral



Be Alert



Watch Out

With just a glance, you can easily identify strong or weak areas of a particular counter.

We do the analysis so you can make faster decisions.



Sign up for our 9 Days Free Trial and give it a try

9-Days FREE TRIAL WORTH (RM 9)

Price & Volume Distribution Charts (as at Yesterday)

Technical Analysis

DEFINITION: Stocks with Technical Analysis showing 5-days & 10-days Moving Average Price below Close over past 1 days and with Volume Spike

CHART GUIDE: Volume Distribution Chart is a statistical interpretation of the current sentiment on each stock in graphical format. The highest bar categorized as >150k is likely to be traded by institutions or super dealers, while the lowest bar categorized as <15k usually represents retail investors. "Buy Up" refers to more buyers snatching up the lots queued at selling price. "Sell Down" refers to sellers selling their shares to the buying queue.



ShareInvestor WebPro > Screener > Market Screener (FA & TA) > select BURSA > add criteria

A. Criteria

- > click Add Criteria
- Technical Analysis Conditions tab select (i) Moving Average Below Close (ii) Volume Spike
- Fundamental Analysis Conditions tab >select (iii) Revenue
- Prices & Other Conditions tab > select (iv) Is Shariah Compliant
- Technical Analysis Conditions tab select (v) Moving Average Below Close
- Prices & Other Conditions tab > select (vi) Last Done Price
- Technical Analysis Conditions tab select (vii) Moving Average Below Close

B. Conditions (Criteria Filters)

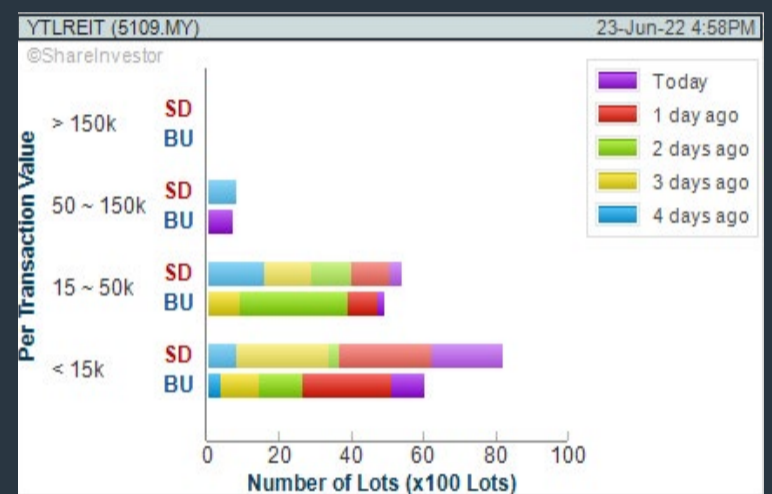
1. Moving Average Below Close - select (MA) type (5) below close price for type (3) days
2. Volume Spike - Volume type (1) greater than type (5) days average
3. Revenue ("000) - select (more than) type (1) for the past select (1) financial year(s)
4. Is Shariah Compliant - select NO
5. Moving Average Below Close - select (MA) type (10) below close price for type (1) days
6. Last Done Price - select (more than) type (0.3)
7. Moving Average Below Close - select (EMA) type (5) below close price for type (1) days

- > click Save Template > Create New Template type (Non-Shariah Hot Stocks) > click Create
- > click Save Template as > select Non-Shariah Hot Stocks > click Save
- > click Screen Now (may take a few minutes)
- Sort By: Select (Vol) Select (Desc)
- Mouse over stock name > Charts > click C² Charts tab or Volume Distribution

YTL HOSPITALITY REIT (5109)

C² Chart

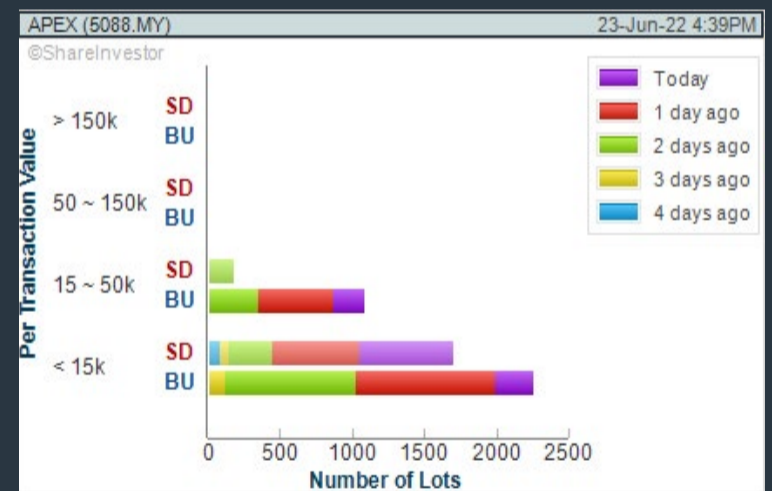
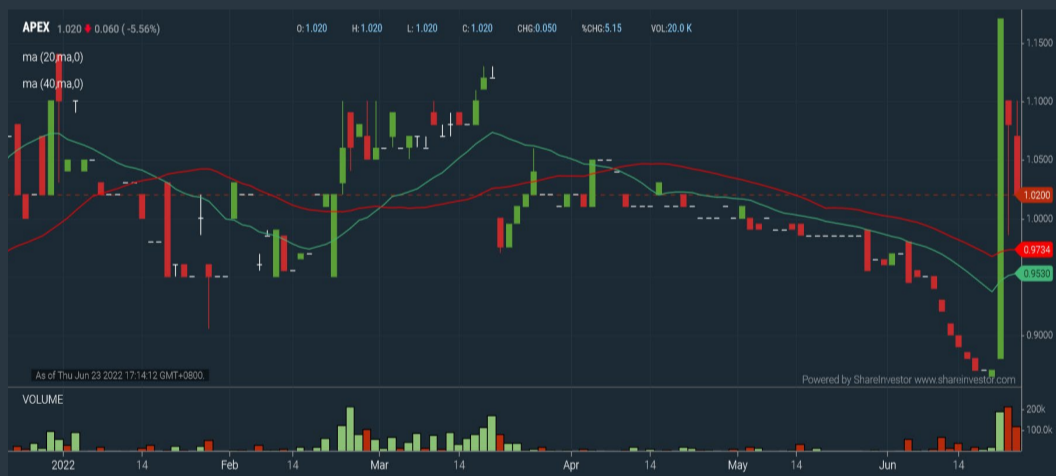
Analysis



APEX EQUITY HOLDINGS BERHAD (5088)

C² Chart

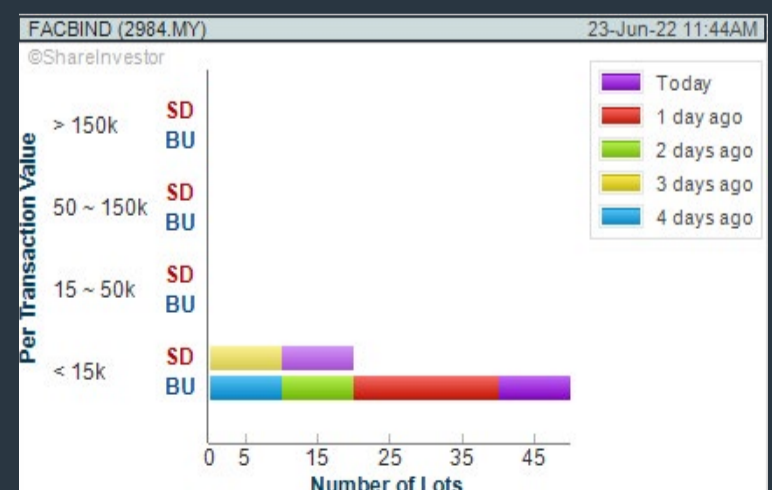
Analysis



FACB INDUSTRIES INCORPORATED (2984)

C² Chart

Analysis

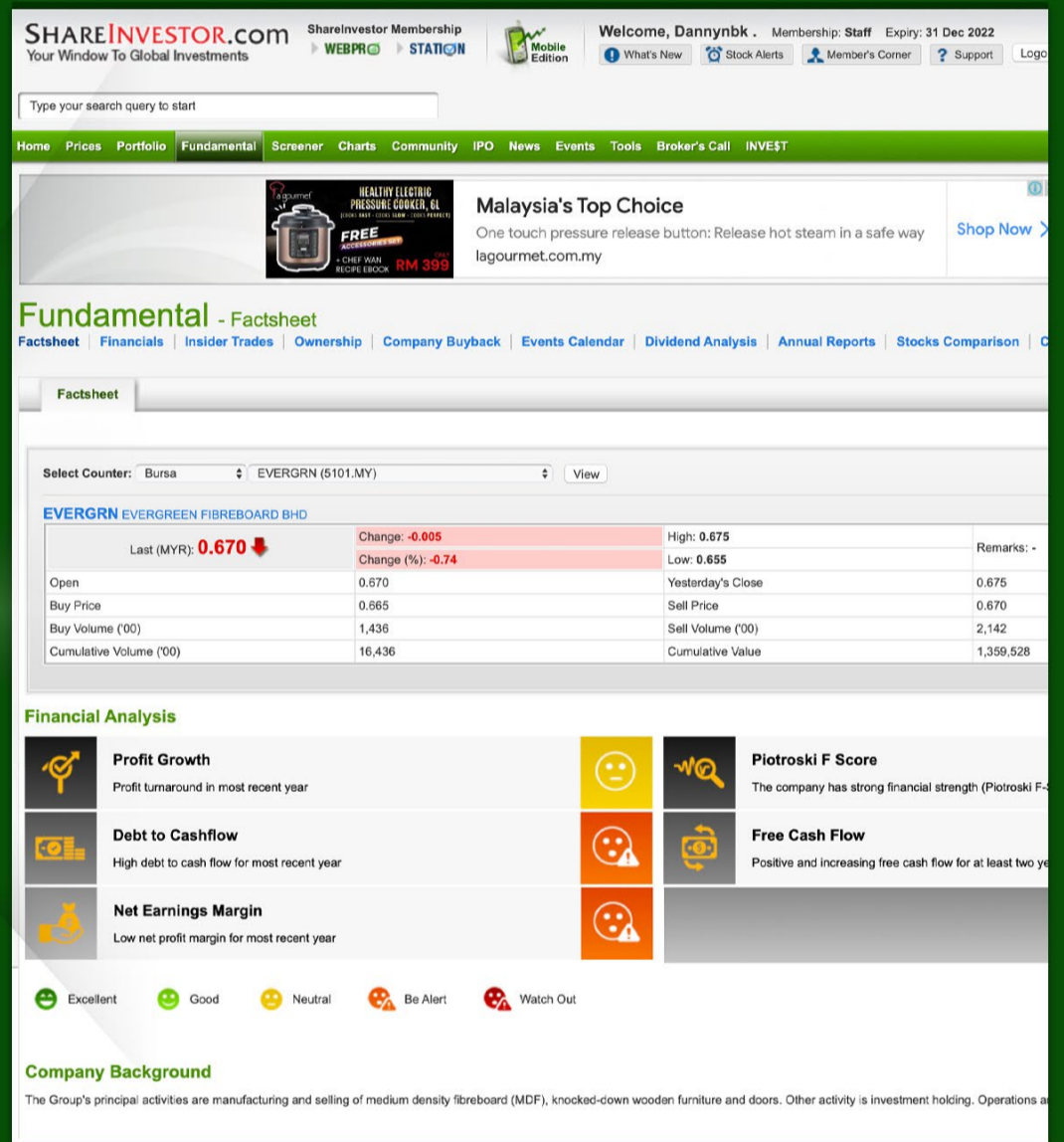
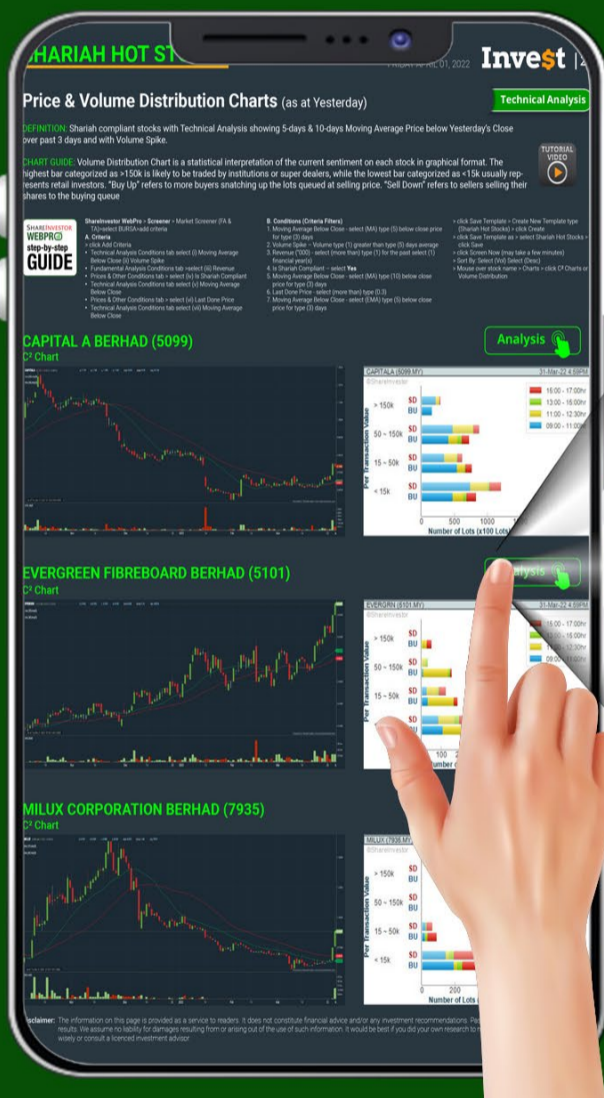


Disclaimer: The information on this page is provided as a service to readers. It does not constitute financial advice and/or any investment recommendations. Past performance is not indicative of future results. We assume no liability for damages resulting from or arising out of the use of such information. It would be best if you did your own research to make your personal investment decisions wisely or consult a licenced investment advisor.

COMPANY ANALYSIS AT YOUR FINGERTIPS

Click the Analysis buttons to access the Factsheets of any company featured on the Hot Stocks, Momentum-Up, Up-Trending, Growth and Dividend Stocks pages.

Invest with knowledge



- Company Background
- Candlestick Chart
- Current Price
- Key Statistics
- Peer Comparison
- Total Shareholder Returns
- Price Movements
- IPO performance
- Financial Reports
- Historical Price Data
- Latest News
- More



Price & Volume Distribution Charts (Over 5 trading days as at Yesterday)

Technical Analysis

DEFINITION: Stocks with Technical Analysis showing Bullish Momentum and Price Uptrend

CHART GUIDE: Volume Distribution Chart is a statistical interpretation of the current sentiment on each stock in graphical format. The highest bar categorized as >150k is likely to be traded by institutions or super dealers, while the lowest bar categorized as <15k usually represents retail investors. "Buy Up" refers to more buyers snatching up the lots queued at selling price. "Sell Down" refers to sellers selling their shares to the buying queue.



ShareInvestor WebPro > Screener > Market Screener (FA & TA) > select BURSA > add criteria

A. Criteria

- > click Add Criteria
- Fundamental Analysis Conditions tab > select (i) Revenue
- Technical Analysis Conditions tab select (ii) Moving Average Below Close
- Technical Analysis Conditions tab select (iii) Average Volume
- Prices & Other Conditions tab > select (iv) Last Done Price
- Technical Analysis Conditions tab select (v) Moving Average Below Close
- Technical Analysis Conditions tab select (v) Moving Average Bullish Crossover

B. Conditions

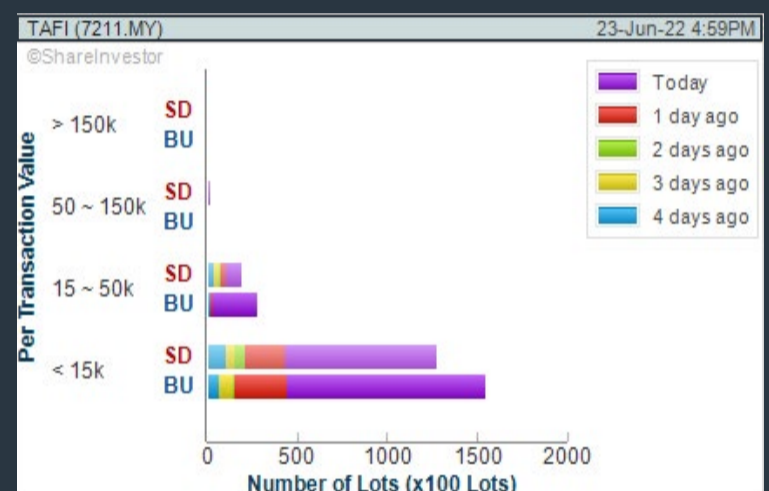
1. Revenue - select (more than) type (1) for the past select (1) financial year(s)
2. Moving Average Below Close - select (MA) type (20) below close price for type (1) days
3. Average Volume - type (5) days average volume type (10000) lots
4. Last Done Price - select (more than) type (0.3)
5. Moving Average Below Close - select (MA) type (10) below close price for type (1) days
6. Moving Average Bullish Crossover - select (MA) type (5) crossed above select (MA) type (10)

> click Save Template > Create New Template type (Non-Shariah Up-Trending Stocks) > click Create Click Save Template As > select Non-Shariah Up Trending Stocks > click Save
> click Screen Now (may take a few minutes)
Sort By: Select (Vol) Select (Desc)
Mouse over stock name > Charts > click C² Charts tab or Volume Distribution

TAFI INDUSTRIES BERHAD (7211)

C² Chart

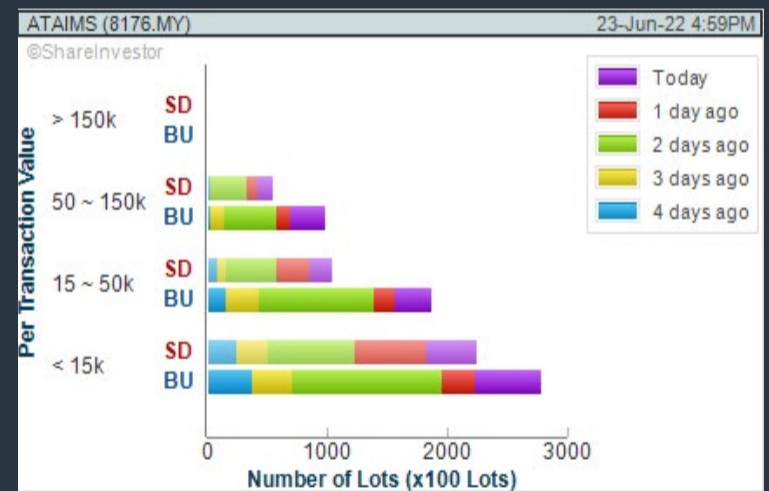
Analysis



ATA IMS BERHAD (8176)

C² Chart

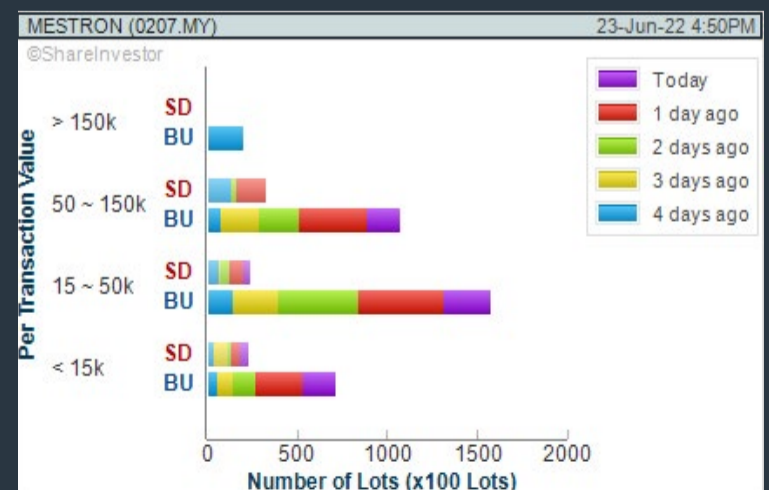
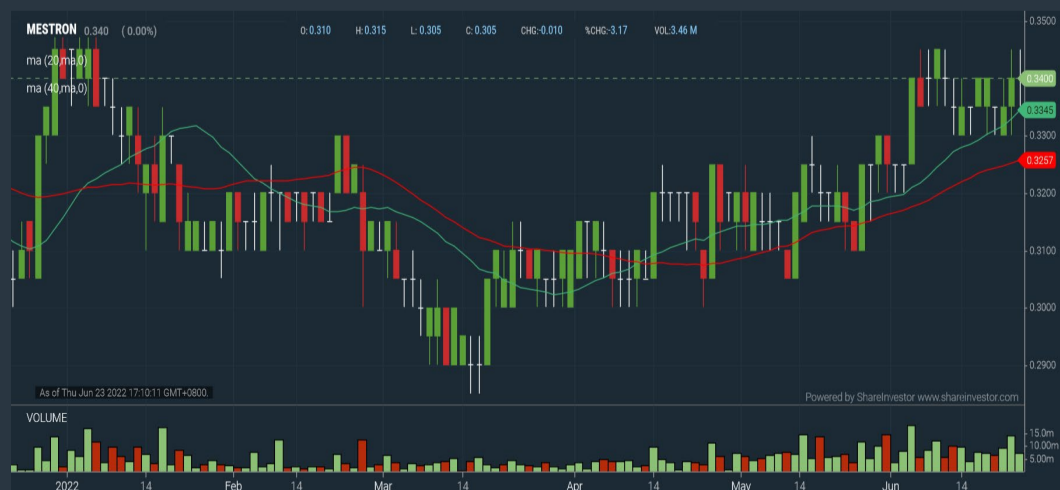
Analysis



MESTRON HOLDINGS BERHAD (0207)

C² Chart

Analysis



Disclaimer: The information on this page is provided as a service to readers. It does not constitute financial advice and/or any investment recommendations. Past performance is not indicative of future results. We assume no liability for damages resulting from or arising out of the use of such information. It would be best if you did your own research to make your personal investment decisions wisely or consult a licenced investment advisor.

BURSASTATION

Professional

Stock Scanning

- Technical Analysis (TA) Market Scanner
- Fundamental Analysis (FA) Market Scanner

Monitoring

- Portfolio
- Stock Alerts
- Price Spread Calculator

Market Data

- Equities
- Derivatives

Scan. Chart. Analyse.

Be The Intelligent Investor

Charts

- Intraday Charts
- Interactive Charts
- Historical Charts
- Volume Distribution Charts

Price Movements

- Streaming Prices
- Time & Sales
- Trade Summary Matrix
- Quote Movements
- 5 Levels Market Depth
- Historical Price Download

Fundamentals

- Factsheets
- Financials
- Insider Trades

Brought to you as a collaborative effort by ShareInvestor and Bursa Malaysia, **BursaStation Professional** is designed with you, the user, in mind, as a user-friendly yet full of powerful features that will appeal to investors/traders who need instant access to fundamental, technical, and trading data, anytime, anywhere. **BursaStation Professional** is a state-of-the-art Stock Market Tracker with Charting Software that places in your hands the power to make better investment decisions.

[CLICK HERE TO START YOUR 14-DAYS FREE TRIAL](#)

Price & Total Shareholder Return (as at Yesterday)

Fundamental Analysis

DEFINITION: Company revenue is growing and making good quality of earnings with positive Free Cash Flow.

CHART GUIDE: Total Shareholder Return (TSR) combines share price appreciation and distributions paid to show the total return to the shareholder expressed as a percentage.



ShareInvestor WebPro > Screener > Market Screener (FA & TA) > select BURSA > add criteria

A. Criteria

1. Fundamental Analysis Conditions tab > select (i) Free Cash Flow, (ii) Revenue Growth, (iii) Gross Profit (Earnings) Margin, (iv) Quality of Earnings, (v) Total Shareholder Returns, > click Add Criteria
2. Fundamental Analysis Conditions tab > select (vi) Total Shareholder Returns > click Add Criteria

B. Conditions (Criteria Filters)

1. Free Cash Flow - select (more than) type (1) for the past select (1) financial year(s)
2. Revenue Growth - select (more than) type (1) for the past select (1) financial year(s)
3. Gross Profit (Earnings) Margin - select (more than) type (30) % for the past select (1) financial year(s)
4. Quality of Earnings - select (more than) type (1) for the past select (1) financial year(s)
5. Total Shareholder Return - select (more than) type (5) % for the past select (3) financial year(s)
6. Total Shareholder Return - select (more than) type (5) % for the past select (5) financial year(s)

- > click Save Template > Create New Template type (Growth Companies) > click Create
- > click Save Template as > select Growth Companies > click Save
- > click Screen Now (may take a few minutes)
- > Sort By: Select (Revenue Growth) Select (Desc)
- > Mouse over stock name > Factsheet > looking for Total Shareholder Return

PETRONAS CHEMICALS GROUP BERHAD (5183)

C² Chart

Analysis



Period	Dividend Received	Capital Appreciation	Total Shareholder Return
Short Term Return	5 Days	-0.380	-3.99 %
	10 Days	-0.700	-7.11 %
	20 Days	-0.780	-7.85 %
Medium Term Return	3 Months	-0.440	-4.69 %
	6 Months	0.230	+6.96 %
	1 Year	0.680	+22.83 %
Long Term Return	2 Years	0.680	+54.71 %
	3 Years	0.880	+20.31 %
	5 Years	1.450	+51.08 %
Annualised Return	Annualised	-	+8.60 %

TA ANN HOLDINGS BERHAD (5012)

C² Chart

Analysis

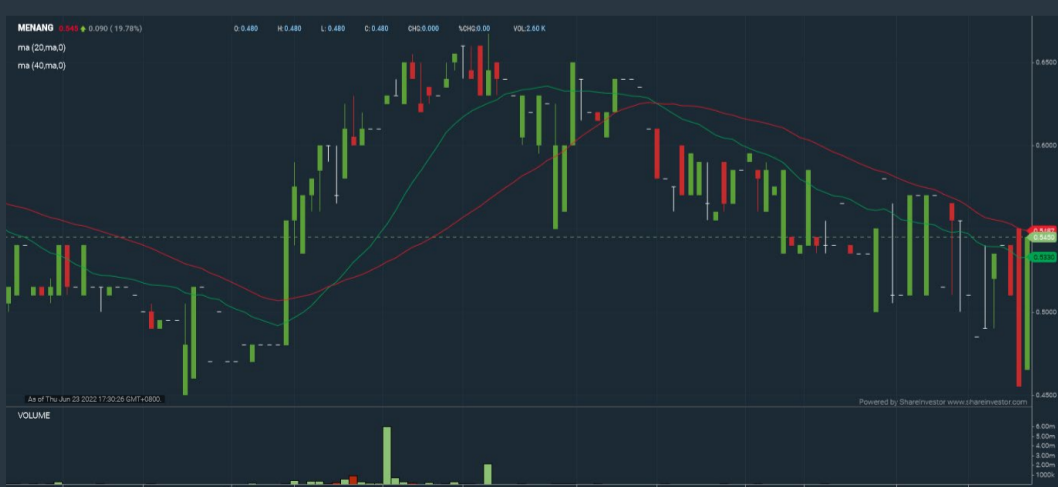


Period	Dividend Received	Capital Appreciation	Total Shareholder Return
Short Term Return	5 Days	-0.200	-4.46 %
	10 Days	-0.750	-14.91 %
	20 Days	0.100	-16.73 %
Medium Term Return	3 Months	0.100	-13.10 %
	6 Months	0.350	+38.62 %
	1 Year	0.450	+78.49 %
Long Term Return	2 Years	0.600	+103.33 %
	3 Years	0.650	+113.42 %
	5 Years	0.800	+43.91 %
Annualised Return	Annualised	-	+7.55 %

MENANG CORPORATION (M) BERHAD (1694)

C² Chart

Analysis



Period	Dividend Received	Capital Appreciation	Total Shareholder Return
Short Term Return	5 Days	+0.060	+12.37 %
	10 Days	-0.025	-4.39 %
	20 Days	+0.010	+1.87 %
Medium Term Return	3 Months	-0.085	-13.49 %
	6 Months	+0.040	+7.92 %
	1 Year	+0.130	+31.33 %
Long Term Return	2 Years	+0.228	+71.92 %
	3 Years	+0.223	+69.25 %
	5 Years	+0.058	+11.91 %
Annualised Return	Annualised	-	+2.28 %

Disclaimer: The information on this page is provided as a service to readers. It does not constitute financial advice and/or any investment recommendations. Past performance is not indicative of future results. We assume no liability for damages resulting from or arising out of the use of such information. It would be best if you did your own research to make your personal investment decisions wisely or consult a licenced investment advisor.

Price & Total Shareholder Return (as at Yesterday)

Fundamental Analysis

DEFINITION: Company is paying out dividend with low or moderate leverage.

CHART GUIDE: Total Shareholder Return (TSR) combines share price appreciation and distributions paid to show the total return to the shareholder expressed as a percentage.



ShareInvestor WebPro > Screener > Market Screener (FA & TA) > select BURSA > add criteria

A. Criteria

- > click Add Criteria
- Fundamental Analysis Conditions tab >select (i) Dividend Yield (Historical)
- Fundamental Analysis Conditions tab >select (ii) Dividend Payout (Historical)
- Fundamental Analysis Conditions tab >select (iii) Total Debt To Equity
- Fundamental Analysis Conditions tab >select (iv) Total Shareholder Returns
- Fundamental Analysis Conditions tab >select (v) Total Shareholder Returns
- Fundamental Analysis Conditions tab / >select (vi) CAGR of Dividend Per Share

• Fundamental Analysis Conditions tab >select (vii) CAGR of Dividend Per Share

B. Conditions (Criteria Filters)

1. Dividend Yield - select (more than) type (1) % for the past select (1) financial year(s)
2. Dividend Payout (Historical) - select (between) type (0.5) to type (1) times for the past select (1) financial year(s)
3. Total Debt to Equity – select (less than) type (1) for the past select (1) financial year(s)
4. Total Shareholder Return – select (more than) type (5) % for the past select (3) financial year(s)
5. Total Shareholder Return – select (more than) type (5) % for the past select (5) financial year(s)

6. CAGR of Dividend Per Share – select (less than) type (30) % for the past select (5) financial year(s)
7. CAGR of Dividend Per Share – select (more than) type (1) % for the past select (5) financial year(s)

- > click Save Template > Create New Template type (Dividend Companies) > click Create
- > click Save Template as > select Dividend Companies > click Save
- > click Screen Now (may take a few minutes)
- > Sort By: Select (Dividend Yield) Select (Desc)
- > Mouse over stock name > Factsheet > looking for Total Shareholder Return

UNITED PLANTATIONS BERHAD (2089)

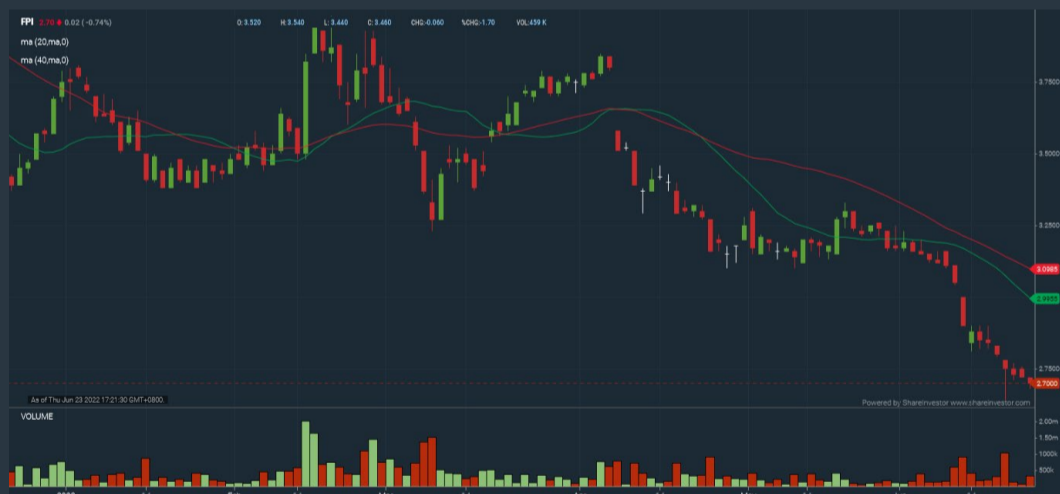
C² Chart



Period	Dividend Received	Capital Appreciation	Total Shareholder Return
Short Term Return	5 Days	-	-0.360
	10 Days	-	-0.540
	20 Days	-	-0.440
Medium Term Return	3 Months	0.850	-0.799
	6 Months	0.850	+0.307
Long Term Return	1 Year	1.150	+0.485
	2 Years	2.000	+1.466
	3 Years	3.350	+1.807
Annualised Return	5 Years	6.250	+2.167
	Annualised	-	-

FORMOSA PROSONIC INDUSTRIES (9172)

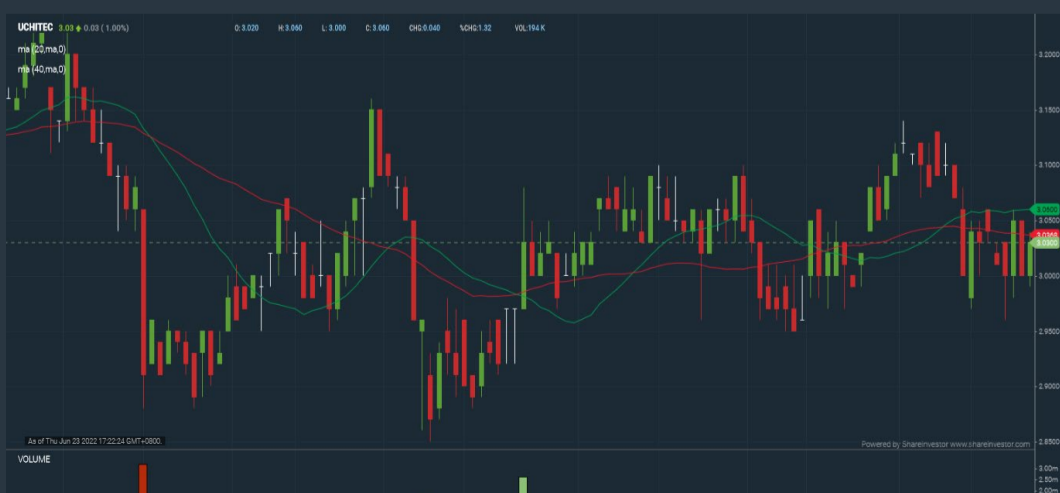
C² Chart



Period	Dividend Received	Capital Appreciation	Total Shareholder Return
Short Term Return	5 Days	-	-0.150
	10 Days	-	-0.420
	20 Days	-	-0.520
Medium Term Return	3 Months	0.200	-1.020
	6 Months	0.200	-0.710
Long Term Return	1 Year	0.200	-0.210
	2 Years	0.340	+1.310
	3 Years	0.450	+0.980
Annualised Return	5 Years	0.630	+1.785
	Annualised	-	-

UCHI TECHNOLOGIES BERHAD (7100)

C² Chart



Period	Dividend Received	Capital Appreciation	Total Shareholder Return
Short Term Return	5 Days	-	-
	10 Days	-	-0.060
	20 Days	-	+0.010
Medium Term Return	3 Months	-	-
	6 Months	0.090	-0.130
Long Term Return	1 Year	0.185	-0.180
	2 Years	0.345	+0.400
	3 Years	0.480	+0.140
Annualised Return	5 Years	0.810	+1.357
	Annualised	-	-

Disclaimer: The information on this page is provided as a service to readers. It does not constitute financial advice and/or any investment recommendations. Past performance is not indicative of future results. We assume no liability for damages resulting from or arising out of the use of such information. It would be best if you did your own research to make your personal investment decisions wisely or consult a licenced investment advisor.

Week: 13 Jun - 27 Jun 2022

More Brokers' Call 

APEX <small>... See More</small>	Call	Target Price	Release Date
Kronologi Asia Berhad (0176)	BUY	RM0.56	23 Jun 2022
AMINVESTMENT BANK <small>... See More</small>	Call	Target Price	Release Date
Top Glove Corporation Bhd (7113)	HOLD	RM0.88	20 Jun 2022
Perak Transit Berhad (0186)	BUY	RM1.14	21 Jun 2022
Petronas Gas Berhad (6033)	BUY	RM20.05	22 Jun 2022
CGS CIMB <small>... See More</small>	Call	Target Price	Release Date
Farm Fresh Berhad (5306)	ADD	RM1.83	20 Jun 2022
Beshom Holdings Berhad (7668)	ADD	RM1.93	21 Jun 2022
KENANGA <small>... See More</small>	Call	Target Price	Release Date
IHH Healthcare Berhad (5225)	OUTPERFORM	RM7.20	20 Jun 2022
Boustead Plantations Berhad (5254)	OUTPERFORM	RM1.00	21 Jun 2022
CTOS Digital Berhad (5301)	OUTPERFORM	RM1.65	22 Jun 2022
MALACCA SECURITIES SDN BHD <small>... See More</small>	Call	Target Price	Release Date
Nova Wellness Group Berhad (0201)	BUY	RM1.08	20 Jun 2022
Kelington Group Berhad (0151)	BUY	RM1.61	21 Jun 2022
OSK Holdings Berhad (5053)	BUY	RM1.41	23 Jun 2022
MIDF <small>... See More</small>	Call	Target Price	Release Date
Eco World Development Group Berhad (8206)	BUY	RM0.80	17 Jun 2022
Gamuda Berhad (5398)	BUY	RM4.02	20 Jun 2022
Astro Malaysia Holdings Berhad (6399)	BUY	RM1.06	22 Jun 2022
JOB KAYHIAN <small>... See More</small>	Call	Target Price	Release Date
SKP Resources Bhd (7155)	BUY	RM1.91	20 Jun 2022
My E.G. Services Berhad (0138)	BUY	RM1.30	21 Jun 2022
Comfort Gloves Berhad (2127)	BUY	RM0.81	22 Jun 2022

Disclaimer: InveSt does not accept any liability whatsoever for any direct, indirect or consequential losses (including loss of profit) or damages that may arise from the use of information or opinions in this publication. The information and opinions in InveSt are not to be considered as an offer to sell or buy any of the securities discussed. Opinions expressed are subject to change without notice. The Brokers may, from time to time, have interests or positions in the securities mentioned. For the full report on each item listed on this page, please visit https://www.shareinvestor.com/my/brokers_call.

DEFINITION: Top 10 stocks with Technical Analysis plus Pattern Matching by 60 pre-defined indicators by the system showing a higher probability of bullish sentiment on the share price.



ShareInvestor WebPro > Screener > Predefined TA Screens > select market BURSA > Most Long Signals > click Scan Results or mouse over each company

CCK CONSOLIDATED HOLDINGS BERHAD (7035.MY)

CCK

Price updated at 23 Jun 2022 16:56

Last: 0.585	Change: -0.005	Volume: 14,694
	Change (%): -0.85	Range: 0.575 - 0.605

TA Scanner Results based on historical data up to 23 Jun 2022

Condition	Signal	Explanation
Bollinger Band: Bullish Short Term Volatility Breakout and Trending	Long	1. Close price above upper bollinger band(33,1). 2. Volume above average volume(10). 3. Average volume(10) is above 300,000.
Bollinger Band: High Above Upper Bollinger Band	Neutral	1. High above upper bollinger band(20,2). 2. Average volume(5) is above 100,000.
DM: Bullish Directional Movement	Long	-DI(14) crossed below +DI(14)
Donchian Channels: High Above Upper Donchian Channels	Long	High crossed above the upper Donchian Channel(14,4)
MA: Bullish Price Crossover	Long	1. Close price crossed above MA(40) within the last 1 day. 2. Previous day close price is below the MA(10) for the last 5 days
MA: Long Term Bullish Moving Average Crossover	Long	MA(50) crossed above MA(200) within the last 1 day.
Parabolic SAR: Bearish Parabolic SAR Reversal	Neutral	1. Parabolic SAR 1 day ago above close price 1 day ago for the last 5 days. 2. Parabolic SAR below close price
RSI: Short Term RSI 50 Bullish Crossover	Long	1. RSI(20) crossed above 50 within the last 1 day and RSI(20) 1 day ago below 50 for the last 5 days. 2. Volume above average volume(125). 3. Average volume(5) is above 100,000.
Stochastic: Fast Stochastic Buy Signal	Long	1. Fast Stochastic(15,5) %K crossed above 20. 2. Fast Stochastic(15,5) %K 1 day ago was below 20 for the last 5 days. 3. Average volume(30) is above 50000
Volume: Volume Spike	Long	1. Volume is more than 500% above average volume(10). 2. Volume above 200000. 3. Close price above 0.10

MESTRON HOLDINGS BERHAD (0207.MY)

MESTRON

Price updated at 23 Jun 2022 16:57

Last: 0.340	Change: -	Volume: 72,260
	Change (%): -	Range: 0.335 - 0.345

TA Scanner Results based on historical data up to 23 Jun 2022

Condition	Signal	Explanation
Bollinger Band: Bullish Long Term Volatility Breakout and Trending	Long	1. Close price above upper bollinger band(33,1). 2. Volume above average volume(50). 3. Average volume(50) is above 300,000.
Bollinger Band: Bullish Short Term Volatility Breakout and Trending	Long	1. Close price above upper bollinger band(33,1). 2. Volume above average volume(10). 3. Average volume(10) is above 300,000.
MA: Long Term Bullish Moving Average Crossover	Long	MA(50) crossed above MA(200) within the last 1 day.
Volume: 10 Days large value Buy Up trade	Long	1. 150K value Buy Up greater than Sell Down by 20% for 10 days. 2. 50K-100K value Buy Up greater than Sell Down by 20% for 10 days. 3. Average volume(10) is above 1000000
Volume: 5 Days large value Buy Up trade	Long	1. 150K value Buy Up greater than Sell Down by 20% for 5 days. 2. 50K-100K value Buy Up greater than Sell Down by 20% for 5 days. 3. Average volume(10) is above 1000000
Williams %R: Bearish Williams %R	Short	1. Williams %R(26) between 0 and -20. 2. Average volume(5) is above 100,000.

Disclaimer: The information on this page is provided as a service to readers. It does not constitute financial advice and/or any investment recommendations. Past performance is not indicative of future results. We assume no liability for damages resulting from or arising out of the use of such information. It would be best if you did your own research to make your personal investment decisions wisely or consult a licenced investment advisor.

CYPARK RESOURCES BERHAD (5184.MY)

CYPARK

Price updated at 23 Jun 2022 16:59

Last: 0.420	Change: -0.005	Volume: 219,920
	Change (%): -1.18	Range: 0.405 - 0.445

TA Scanner Results based on historical data up to 23 Jun 2022

Condition	Signal	Explanation
Bollinger Band: High Above Upper Bollinger Band	Neutral	1. High above upper bollinger band(20,2). 2. Average volume(5) is above 100,000.
Chaikin Volatility: Increasing Chaikin Volatility	Neutral	Chaikin Volatility(10,10) has been increasing for 5 days
DM: Bullish Directional Movement	Long	-DI(14) crossed below +DI(14)
Donchian Channels: High Above Upper Donchian Channels	Long	High crossed above the upper Donchian Channel(14,4)
Volume: 10 Days large value Buy Up trade	Long	1. 150K value Buy Up greater than Sell Down by 20% for 10 days. 2. 50K-100K value Buy Up greater than Sell Down by 20% for 10 days. 3. Average volume(10) is above 1000000
Volume: 5 Days large value Buy Up trade	Long	1. 150K value Buy Up greater than Sell Down by 20% for 5 days. 2. 50K-100K value Buy Up greater than Sell Down by 20% for 5 days. 3. Average volume(10) is above 1000000
Volume: Consecutive Days Of Increasing Average Volume	Long	1. Average Volume(20) has been increasing over the last 2 weeks. 2. Average volume(20) is above 100000

CAB CAKARAN CORPORATION BERHAD (7174.MY)

CAB

Price updated at 23 Jun 2022 16:30

Last: 0.520	Change: -	Volume: 6,005
	Change (%): -	Range: 0.520 - 0.535

TA Scanner Results based on historical data up to 23 Jun 2022

Condition	Signal	Explanation
Bollinger Band: High Above Upper Bollinger Band	Neutral	1. High above upper bollinger band(20,2). 2. Average volume(5) is above 100,000.
DM: Bullish Directional Movement	Long	-DI(14) crossed below +DI(14)
Donchian Channels: High Above Upper Donchian Channels	Long	High crossed above the upper Donchian Channel(14,4)
MA: Bullish Price Crossover	Long	1. Close price crossed above MA(40) within the last 1 day. 2. Previous day close price is below the MA(10) for the last 5 days
Parabolic SAR: Bearish Parabolic SAR Reversal	Neutral	1. Parabolic SAR 1 day ago above close price 1 day ago for the last 5 days. 2. Parabolic SAR below close price
Volume: Volume Spike	Long	1. Volume is more than 500% above average volume(10). 2. Volume above 200000. 3. Close price above 0.10

LEONG HUP INTERNATIONAL BERHAD (6633.MY)

LHI

Price updated at 23 Jun 2022 16:59

Last: 0.525	Change: -0.010	Volume: 14,592
	Change (%): -1.87	Range: 0.520 - 0.550

TA Scanner Results based on historical data up to 23 Jun 2022

Condition	Signal	Explanation
Bollinger Band: Bullish Long Term Volatility Breakout and Trending	Long	1. Close price above upper bollinger band(33,1). 2. Volume above average volume(50). 3. Average volume(50) is above 300,000.
Bollinger Band: Bullish Short Term Volatility Breakout and Trending	Long	1. Close price above upper bollinger band(33,1). 2. Volume above average volume(10). 3. Average volume(10) is above 300,000.
Bollinger Band: High Above Upper Bollinger Band	Neutral	1. High above upper bollinger band(20,2). 2. Average volume(5) is above 100,000.
Donchian Channels: High Above Upper Donchian Channels	Long	High crossed above the upper Donchian Channel(14,4)

HUA YANG BERHAD (5062.MY)

HUAYANG

Price updated at 23 Jun 2022 16:16

Last: 0.220	Change: +0.005	Volume: 837
	Change (%): +2.33	Range: 0.210 - 0.220

TA Scanner Results based on historical data up to 23 Jun 2022

Condition	Signal	Explanation
Accumulation Distribution: Bullish Accumulation Distribution	Long	Accumulation distribution increasing for the last 7 days
Candlestick: Bullish Hammer	Long	Bullish: Hammer
Price: New 52 Week Low	Short	1. Stock reach a new 52 week low. 2. Average volume(30) is above 50000.
Volume: Consecutive Days Of Increasing Average Volume	Long	1. Average Volume(20) has been increasing over the last 2 weeks. 2. Average volume(20) is above 100000
Williams %R: Bullish Williams %R	Long	1. Williams %R(26) between -80 and -100. 2. Average volume(5) is above 100,000.

COUNTRY HEIGHTS HOLDINGS BERHAD (5738.MY)

CHHB

Price updated at 23 Jun 2022 16:52

Last: 0.725	Change: -0.005	Volume: 15,510
	Change (%): -0.68	Range: 0.710 - 0.730

TA Scanner Results based on historical data up to 23 Jun 2022

Condition	Signal	Explanation
Bollinger Band: Bullish Lower Bollinger Band Support	Long	1. Low 1 day ago below lower bollinger band(20,2). 2. Close above close 1 day ago. 3. Average volume(5) is above 100,000.
Bollinger Band: High Above Upper Bollinger Band	Neutral	1. High above upper bollinger band(20,2). 2. Average volume(5) is above 100,000.
Volume: 10 Days large value Buy Up trade	Long	1. 150K value Buy Up greater than Sell Down by 20% for 10 days. 2. 50K-100K value Buy Up greater than Sell Down by 20% for 10 days. 3. Average volume(10) is above 1000000
Volume: 5 Days large value Buy Up trade	Long	1. 150K value Buy Up greater than Sell Down by 20% for 5 days. 2. 50K-100K value Buy Up greater than Sell Down by 20% for 5 days. 3. Average volume(10) is above 1000000
Volume: Consecutive Days Of Decreasing Average Volume	Short	1. Average Volume(20) has been decreasing over the last 2 week. 2. Average volume(20) is above 50000
Williams %R: Bullish Williams %R	Long	1. Williams %R(26) between -80 and -100. 2. Average volume(5) is above 100,000.

MSIAN GENOMICS RES CENTRE BERHAD (0155.MY)

MGRC

Price updated at 23 Jun 2022 16:59

Last: 0.775	Change: +0.030	Volume: 121,514
	Change (%): +4.03	Range: 0.750 - 0.780

TA Scanner Results based on historical data up to 23 Jun 2022

Condition	Signal	Explanation
Bollinger Band: Bullish Long Term Volatility Breakout and Trending	Long	1. Close price above upper bollinger band(33,1). 2. Volume above average volume(50). 3. Average volume(50) is above 300,000.
Bollinger Band: Bullish Short Term Volatility Breakout and Trending	Long	1. Close price above upper bollinger band(33,1). 2. Volume above average volume(10). 3. Average volume(10) is above 300,000.
Bollinger Band: High Above Upper Bollinger Band	Neutral	1. High above upper bollinger band(20,2). 2. Average volume(5) is above 100,000.
Candlestick: Bearish Hanging Man	Short	Bearish: Hanging Man
Donchian Channels: High Above Upper Donchian Channels	Long	High crossed above the upper Donchian Channel(14,4)

SINARAN ADVANCE GROUP BERHAD (5172.MY)

SINARAN

Price updated at 23 Jun 2022 16:50

Last: 0.100	Change: -	Volume: 2,084
	Change (%): -	Range: 0.095 - 0.105

TA Scanner Results based on historical data up to 23 Jun 2022

Condition	Signal	Explanation
Bollinger Band: Bullish Long Term Volatility Breakout and Trending	Long	1. Close price above upper bollinger band(33,1). 2. Volume above average volume(50). 3. Average volume(50) is above 300,000.
Bollinger Band: Bullish Short Term Volatility Breakout and Trending	Long	1. Close price above upper bollinger band(33,1). 2. Volume above average volume(10). 3. Average volume(10) is above 300,000.
Bollinger Band: High Above Upper Bollinger Band	Neutral	1. High above upper bollinger band(20,2). 2. Average volume(5) is above 100,000.
Candlestick: Bullish Engulfing	Long	Bullish: Engulfing
Donchian Channels: High Above Upper Donchian Channels	Long	High crossed above the upper Donchian Channel(14,4)
Parabolic SAR: Bearish Parabolic SAR Reversal	Neutral	1. Parabolic SAR 1 day ago above close price 1 day ago for the last 5 days. 2. Parabolic SAR below close price

MEGA FIRST CORPORATION BERHAD (3069.MY)

MFCB

Price updated at 23 Jun 2022 16:57

Last: 3.400	Change: -	Volume: 5,344
	Change (%): -	Range: 3.380 - 3.440

TA Scanner Results based on historical data up to 23 Jun 2022

Condition	Signal	Explanation
Bollinger Band: Low Below Lower Bollinger Band	Neutral	1. Low below lower bollinger band(20,2). 2. Average volume(5) is above 100,000.
Candlestick: Indecision Doji	Neutral	Indecision: Doji
MACD: Oversold	Long	1. MACD Histogram(12,26,9) reached a new 6 month low. 2. MACD Histogram(12,26,9) has been below 0 for the last 3 weeks.
Volume: 10 Days large value Buy Up trade	Long	1. 150K value Buy Up greater than Sell Down by 20% for 10 days. 2. 50K-100K value Buy Up greater than Sell Down by 20% for 10 days. 3. Average volume(10) is above 1000000
Volume: 5 Days large value Buy Up trade	Long	1. 150K value Buy Up greater than Sell Down by 20% for 5 days. 2. 50K-100K value Buy Up greater than Sell Down by 20% for 5 days. 3. Average volume(10) is above 1000000
Williams %R: Bullish Williams %R	Long	1. Williams %R(26) between -80 and -100. 2. Average volume(5) is above 100,000.

Disclaimer: The information on this page is provided as a service to readers. It does not constitute financial advice and/or any investment recommendations. Past performance is not indicative of future results. We assume no liability for damages resulting from or arising out of the use of such information. It would be best if you did your own research to make your personal investment decisions wisely or consult a licenced investment advisor.

Condition	Signal	Explanation
RSI: Short Term RSI 50 Bullish Crossover	Long	1. RSI(20) crossed above 50 within the last 1 day and RSI(20) 1 day ago below 50 for the last 5 days. 2. Volume above average volume(125). 3. Average volume(5) is above 100,000.
Volume: 10 Days large value Sell Down trade	Short	1. 150K value Sell Down greater than Buy Up by 20% for 10 days. 2. 50K-100K value Sell Down greater than Buy Up by 20% for 10 days. 3. Average volume(10) is above 1000000
Volume: 5 Days large value Sell Down trade	Short	1. 150K value Sell Down greater than Buy Up by 20% for 5 days. 2. 50K-100K value Sell Down greater than Buy Up by 20% for 5 days. 3. Average volume(10) is above 1000000

LEADING INDEX (LI) SIGNIFIES BETTER ECONOMIC RECOVERY AHEAD FOR MALAYSIA - DOSM

According to Malaysia's Department of Statistics Malaysia (DoSM) chief statistician Datuk Seri Mohd Uzir Mahidin, economic recovery is in a better direction, as the performance of the Leading Index (LI) for April 2022 eased to a better negative of 0.5 per cent from a negative 1.4 per cent in March 2022. The LI is a predictive tool used to anticipate economic upturns and downturns in an average of four to six months ahead. The decrease in LI was influenced mainly by the drop in the number of housing units approved caused by the decline in applications from developers during the said month. Based on a month-on-month comparison, LI slipped to a negative 0.5 per cent, dragged by the number of housing units approved (-1.4 per cent), number of new companies registered (-0.5 per cent), and the Bursa Malaysia Industrial Index (-0.3 per cent). Despite the softening in LI for the reference month, the direction portrayed by the smoothed LI remained favourable by consistently above the long-term trend and

registered better index points. This implies that the trend of Malaysia's economic recovery is in a better direction. The issue of inflation and rising commodity prices need to be taken into account, considering the global situation. The Coincident Index (CI), which measures the overall current economic performance, is picking up since February 2022, reflecting an increase in economic activities with the economic and social activities operating at full capacity. The CI continued to climb by 5.3 per cent year-on-year to attain 120.3 points in April 2022. On monthly basis, the growth of CI increased to 2.0 per cent in the reference month compared to 1.4 per cent in the previous month. The growth was driven by a significant increase in volume index of retail trade (1.6 per cent). In relation to the reference period of the Malaysian business cycle, the CI detected a recession-induced by the Covid-19 pandemic beginning in February 2020 and ending in July 2021.

SC TO RELEASE SRI TAXONOMY FRAMEWORK BY THE END OF THE YEAR

According to the Securities Commission Malaysia (SC) Executive chairman Datuk Dr Awang Adek Hussin, SC will be releasing the Sustainable and Responsible Investment (SRI) Taxonomy framework by the end of the year. The framework would act as the guiding principles to identify and classify economic activities that support environmental, social and sustainability objectives. The SC is finalising the SRI Taxonomy following a public consultation paper issued in December last year and will continue to pursue the SRI agenda for the next phase of the market development. Speaking at the SRI Virtual Conference 2022, titled 'Preserving the Climate through Sustainable Business and Living', he said this is clearly articulated in the Capital Market Master Plan 3 (CMP3). The SRI, along with the Islamic capital market (ICM), will play a key role in accelerating the transition to a sustainable and inclusive stakeholder economy. SC intends to expand the range of products and services for Islamic social finance and impact investing, in alignment with SRI principles. It will also be developing a framework for market-based instruments to enable transition finance in Malaysia which will increase funding options for companies at various stages of their sustainability journey. Malaysia's sustainable investments

journey started as early as 2014 when the SC's SRI Sukuk Framework was introduced, which allowed for funds to be raised to finance a wide range of green, socially beneficial and sustainable projects. To date, a total RM8.3 billion of SRI Sukuk has been issued under this framework. Subsequently, the Guidelines on SRI Funds was rolled-out in 2017 to facilitate the growth of environmental, social and corporate governance (ESG) funds in Malaysia. As of 2021, 34 SRI funds have been launched, offering wholesale and retail investors the opportunity to invest in conventional and Shariah-compliant ESG-focused funds. Businesses today face rising expectations from stakeholders and the communities they serve. More than ever, they are being assessed on their sustainability commitments and handling of social issues, and our corporates are rising to the challenge. Recent research by PricewaterhouseCoopers (PwC) found that 94% of the top 50 Malaysian public-listed companies have ESG strategies in place. Sustainable and inclusive business practices benefit not just shareholders, but all stakeholders. Therefore, boards and management must take the lead and ensure that sustainability is at the heart of business strategy and operations. Crucially, investors must also play their role by shining a spotlight on the credibility of corporate commitments and shape the narrative ahead. Progress has certainly been made but there is still a long way to go. Moving forward, the key to managing the transition to a more sustainable and greener future is the availability of financing and impetus for change. Sustainable change requires investments in new technologies and innovative solutions. Market-based funding and risk management instruments are well-equipped to facilitate public and private efforts in climate mitigation and transition adding that Bloomberg Intelligence has estimated global ESG-related assets under management to grow to US\$50 trillion (RM221 trillion) by 2025, primarily driven by fund inflows focused on climate change.

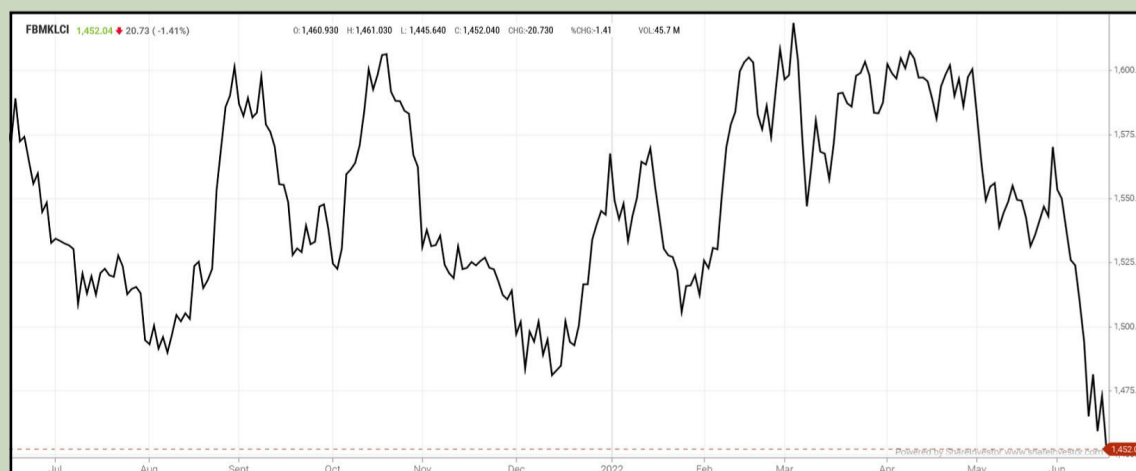
TOWARDS FORMALISING STEWARDSHIP POLICY FOR INVESTEE COMPANIES - EPF

According to the Employees Provident Fund (EPF) chief strategy officer Nurhisham Hussein, the Fund is currently formalising a stewardship policy to address investee companies that fail to comply

with the environmental, social and governance (ESG) standards. The stewardship policy addresses the level of engagement and action taken by the Fund in case somebody does not comply with the standards. The policy is expected to be issued sometime in the near future. At least the people will be able to understand the consequences and the channels that they can use to communicate with the EPF and other big investors on specific issues that need to be addressed. He was speaking at the Sustainable and Responsible Investment Virtual Conference 2022, titled "Preserving the Climate through Sustainable Business and Living". In March this year, EPF had launched the Sustainable Investment Policies, Priority Issues Policies, and Priority Sector Policies to guide the EPF in making informed decisions by integrating ESG standards. These initiatives are aligned with EPF's commitment to two overarching sustainable investment ambitions that will guide its overall pursuit of sustainability, namely, to achieve a fully ESG-compliant portfolio by 2030 and a climate-neutral portfolio by 2050, in line with the 12th Malaysia Plan's aspirations for a carbon-neutral country.

EYE ON THE MARKETS

This week, on Friday (24 June), the Ringgit opened at 4.4030 against the USD from 4.4025 on Monday (20 June). Meanwhile, the Ringgit was 3.1665 to the Sing Dollar on Friday (24 June). On Monday (20 June), the FBM KLCI opened at 1454.40. As at Friday (24 June) 10:00am, the FBM KLCI is down 20.80 points for the week at 1433.60. Over in US, the overnight Dow Jones Industrial Average closed up 194.23 points (+0.64%) to 30,677.36 whilst the NASDAQ added 179.11 points (+1.62%) to 11,232.19.



KLCI 1 Year Chart

Over 5 trading days



ShareInvestor WebPro (www.shareinvestor.com/my)

1. Price > Stock Prices
2. Select Market: NASDAQ / NYSE / IDX / SET / HKEX / SGX (One bourse at a time)
3. select Stocks Tab
4. select Ranking Top Gainers or Top Losers (Over 5 Trading Days)
5. Mouse over Column Layout > select Edit Customs > select Name > select Last Done Price > select 5 Days Change > select 52 Weeks High > select 52 Weeks Low > Mouse Over Column Layout > select Custom

NASDAQ (USD)

Top Gainers

Name	Last Done	Change Over 5 Days	52 Weeks High	52 Weeks Low
ALPHABET INC (GOOGL.NQ)	2,244.840	+124.170	3,030.932	2,037.694
ALPHABET INC (GOOG.NQ)	2,253.690	+96.380	3,042.000	2,044.160
MERCADOLIBRE INC	698.640	+85.940	1,970.130	600.685
TESLA INC	705.210	+65.910	1,243.490	615.500
EQUINIX INC	677.420	+58.990	885.260	606.120

Top Losers

Name	Last Done	Change Over 5 Days	52 Weeks High	52 Weeks Low
FORTINET INC	56.800	-206.930	371.770	236.360
BOOKING HOLDINGS INC	1,835.060	-71.810	2,715.660	1,796.450
OASIS PETROLEUM INC	128.820	-22.910	181.340	77.733
DIAMONDBACK ENERGY INC	119.240	-14.440	162.241	65.930
PDC ENERGY INC	59.070	-13.580	89.220	34.520

NYSE (USD)

Top Gainers

Name	Last Done	Change Over 5 Days	52 Weeks High	52 Weeks Low
NVR INC	3,941.820	+271.820	5,982.445	3,576.010
AUTOZONE INC	2,108.640	+107.480	2,267.400	1,418.260
SHOPIFY INC	363.830	+58.600	1,762.918	297.641
SERVICENOW INC	485.530	+57.450	707.600	406.470
HUBSPOT INC	328.490	+46.680	866.000	278.490

Top Losers

Name	Last Done	Change Over 5 Days	52 Weeks High	52 Weeks Low
BERKSHIRE HATHAWAY INC	402,300.000	-850.000	544,389.260	396,500.000
TEXAS PACIFIC LAND CORPORATION	1,458.120	-93.940	1,756.000	946.290
BIGLARI HOLDINGS INC	541.000	-49.100	901.000	540.330
DILLARDS INC	243.820	-33.270	416.710	160.510
WATSCO INC	233.910	-26.492	314.000	233.910

IDX (Rupiah)

Top Gainers

Name	Last Done	Change Over 5 Days	52 Weeks High	52 Weeks Low
INDOSTERLING TECHNOMEDIA TBK.	7,550.000	+850.000	10,200.000	2,640.000
INDOFOOD CBP SUKSES MAKMUR TBK.	9,325.000	+650.000	9,425.000	7,050.000
AKASHA WIRA INTERNATIONAL TBK.	7,050.000	+575.000	7,400.000	1,775.000
M CASH INTEGRASI TBK.	12,675.000	+575.000	15,000.000	7,225.000
CHAROEN POKPHAND INDONESIA TBK	5,650.000	+500.000	6,750.000	4,800.000

Top Losers

Name	Last Done	Change Over 5 Days	52 Weeks High	52 Weeks Low
INDO-RAMA SYNTHETICS TBK.	9,975.000	-1,925.000	13,625.000	3,650.000
SOLUSI TUNAS PRATAMA TBK.	39,000.000	-1,475.000	70,975.000	7,000.000
INTI BANGUN SEJAHTERA TBK.	6,650.000	-1,325.000	10,300.000	3,420.000
KINO INDONESIA TBK.	2,900.000	-1,100.000	5,200.000	1,990.000
ASAHIMAS FLAT GLASS TBK.	6,450.000	-850.000	8,475.000	3,500.000

SET (Thai Baht)

Top Gainers

Name	Last Done	Change Over 5 Days	52 Weeks High	52 Weeks Low
DELTA	313.000	+11.000	790.000	287.000
SCC	366.000	+11.000	440.000	355.000
SVH	412.000	+6.000	426.000	390.000
CBG	108.500	+5.500	156.000	96.750
GPSC	65.250	+3.750	89.750	59.500

Top Losers

Name	Last Done	Change Over 5 Days	52 Weeks High	52 Weeks Low
JTS	164.000	-31.000	594.000	27.750
PTTEP	154.000	-12.000	178.500	100.500
INSURE	180.000	-6.500	287.000	22.000
CPH	26.750	-4.250	47.250	3.100
TIPH	62.000	-4.250	90.000	31.750

HKEX (HKD)

Top Gainers

Name	Last Done	Change Over 5 Days	52 Weeks High	52 Weeks Low
LI AUTO INC	154.200	+30.600	157.600	67.300
NIO INC	184.200	+28.900	196.000	100.800
XPENG INC	127.000	+24.900	220.000	71.850
BYD COMPANY LIMITED	310.000	+19.200	324.600	165.000
TRIP COM GROUP LTD	181.300	+13.300	290.000	123.300

Top Losers

Name	Last Done	Change Over 5 Days	52 Weeks High	52 Weeks Low
NETEASE INC	142.400	-11.600	188.900	108.300
ORIENT OVERSEAS INT	216.400	-11.600	284.800	111.300
KOOLEARN TECHNOLOGY HLDG LTD	18.180	-10.420	33.150	2.840
CLP HOLDINGS LTD	65.000	-8.350	81.650	64.900
SUNNY OPTICAL TECHNOLOGY GROUP	108.900	-6.400	259.400	93.550

SGX (SGD)

Top Gainers

Name	Last Done	Change Over 5 Days	52 Weeks High	52 Weeks Low
NIO INC. USD OV	23.450	+3.980	24.270	14.200
HONGKONGLAND USD	4.910	+0.190	5.800	4.130
UOL	7.300	+0.180	7.520	6.730
CAPITALANDINVEST	3.780	+0.150	4.269	2.879
MAPLETREE IND TR	2.590	+0.140	3.020	2.400

Top Losers

Name	Last Done	Change Over 5 Days	52 Weeks High	52 Weeks Low
JARDINE C&C	28.790	-2.320	32.000	18.930
JMH USD	51.670	-0.830	65.510	49.980
UOB	26.450	-0.530	33.330	25.280
VENTURE	16.500	-0.490	19.700	16.240
FIRST RESOURCES	1.770	-0.230	2.370	1.290

FOCUS ON 2% INFLATION TARGET



Pankaj C Kumar

Pankaj is a former CIO and Head of Research, presently focused on economic, market and corporate analyses. The views expressed here are entirely the writer's own.

After raising the Fed Fund Rate by 75bps last week, Federal Reserve Chairman, Jerome Powell's comments that the Fed is focused on returning inflation to the 2% target rate implies that the Fed will do what it takes to bring inflation prints down. Although his comments were more towards investors' confidence in the US Dollars as a store of value, the Fed's inflation targeting is nevertheless an important element in building investors' confidence. Mr. Powell also did not rule out a possible recession scenario for the US due to Fed's aggressive stance to tackle inflationary pressure as manoeuvring a soft landing for the US economy will be challenging. Meanwhile, Moody's Analytics join other institutions in lowering the 2022 global GDP growth with a forecast of 2.8% from 3.1% previously.

Domestically, Malaysian government's move to remove the ceiling price for chicken and chicken eggs as well as subsidies for cooking oil in bottles of 2kg, 3kg, and 5kg with effect from July 1 is likely to see higher inflation prints from next

month onwards. However, the government will still be spending some RM4bil in subsidy for the 1kg polybag packages.

ECONOMY

Out of the US, the Housing Starts for May fell by 14.4% m-o-m to an annual rate of 1.55mil from a revised 1.81mil in April, well below the consensus expectations of 1.69mil. In other news, Existing Home Sales came in within expectations as the May data fell by 8.6% y-o-y and 3.4% m-o-m. Meanwhile, the People's Bank of China (PBoC) left its domestic key benchmark rates unchanged as the world's second-largest economy is just regaining its footing from the two-month lockdown across several major cities, while the Philippines raised its benchmark rate by another 25bps to 2.5%, as expected.

Out of Eurozone, the S&P Global Flash Eurozone PMI Composite Output Index and the S&P Global Flash Manufacturing PMI for June came in at just 51.9 and 52.0 against 54.8 and 54.6 in May respectively. The Eurozone consumer confidence plummeted further with a reading of -23.6 in June against -21.1 in May, as high inflation prints and the war in Ukraine have taken a toll on consumers. The reading was near the lows seen in April 2020 at the height of the Covid-19 pandemic. Meanwhile, the UK saw headline inflation rising to 9.1% y-o-y in May, coming in within expectations, but higher than the 9% print in April.

Locally, Malaysia's May exports surged 30.5% y-o-y to hit RM120.5bil while imports jumped 37.3% to RM107.9bil. However, due to a stronger surge in imports, the May trade surplus fell by 8.3% y-o-y to RM12.6bil. For the first five months of 2022, exports improved by 23.5% y-o-y to RM593.0bil while imports increased by 27.0% to RM491.9bil. Malaysia's total trade surplus for the period stood at RM101.1bil, up 9% y-o-y. Separately, Malaysia's international reserves as at June 15 fell by US\$3.6bil to US\$109.2bil from US\$112.8bil a fortnight ago. In ringgit terms, reserves fell by RM16.08bil to RM458.14bil from RM474.22bil. Meanwhile, according to the Department of Statistics Malaysia (DOSM), Malaysia's Foreign Direct Investment totalled RM48.1bil in 2021 against RM13.3bil in the previous year.

In other news, Malaysia has decided not to extend the 6% Sales and Service Tax exemption for new vehicles, which expires on June 30, 2022. Nevertheless, for bookings made before the date, new vehicles registered will still enjoy the exemption right up to March 31, 2023. In a related development, according to the Malaysian Automotive Association, vehicle sales in May fell by 11.8% m-o-m to 49,603 from 56,213 in April. However, compared with a year ago, sales were higher by 5.1%. Year-to-date, Total Industry Volume increased by 7.4% to 265,656.

Meanwhile, the Employees Provident Fund was not spared from the global market meltdown as 1Q 2022 investment income declined by 17.8% y-o-y to RM15.85bil from RM19.29bil. After taking into consideration the RM1.09bil write-down on its equity exposure, net investment income totalled RM14.76bil.

CORPORATE

In contract news, Gamuda, via its 50%-owned joint venture company, won a A\$1.35bil Coffs Harbour Bypass project awarded by the New South Wales government. Tuju Setia won a RM257mil construction contract for the construction of Jernih Residences in Kajang, while Kerjaya Prospek Group obtained a RM154.7mil contract for the main building works of a residential development project located in Bangsar, Kuala Lumpur. In other news, Tititjaya is set to invest some RM200mil in a logistics commercial complex in Penang for DHL Properties (M) Sdn Bhd under a 10-year build-and-let agreement. Meanwhile, YTL Hospitality REITs announced that the revaluation exercise of its property portfolio saw a gain of RM212.0mil, enabling its unaudited net asset value per share to increase to RM1.6806 per share as at May 31, 2022, from RM1.5562 per share prior to the revaluation exercise.

EQUITY

Global markets were generally weaker the past week as investors turned cautious on Fed's move as well as weaker economic data points.

Nevertheless, some markets were firmer, rising between 1.1% and 2.1% while markets that fell saw losses of between 0.1% to as much as 5.6% on Korea's KOSPI Index. It was another sell-off week on Bursa Malaysia as stocks tumbled across the board with the benchmark KLCI losing another 41.72pts or 2.8% to close at 1,431.05pts. For the week ended June 22, retail market participants and local institutions were again the net buyers in the market but with a smaller net inflow of RM143.9mil and RM140.5mil respectively. This left the foreign market participants as sole net sellers in the market with an outflow of RM284.4mil.

EYE ON WEEK AHEAD

Later today, the DOSM will be releasing Malaysia's May inflation data as the market will be closely watching both the headline and core readings, which were last seen at 2.2% and 2.3% respectively in April. Out of the US, the final June University of Michigan Consumer Sentiment Index is due with the market expecting the same reading of 50.2 as per the preliminary report, while data for May 2022 New Home Sales that is also due will be of interest due to the recent surge in mortgage rates.

On Monday, June 27, the US Durable Goods Order and Pending Home Sales data for May are expected to be released while the next day, all eyes will be on the Conference Board's Consumer Confidence data for June, which is expected to fall to just 100.0 from 106.4 in May. On Thursday, June 30, China will be releasing both the official manufacturing and non-manufacturing PMI for June, which the market expects a slight dip from the preceding month's prints of 49.6 and 47.8 respectively. Later in the day, the US core Personal Consumption Expenditure for May is due with consensus expecting a 4.9% print, unchanged from the April reading. Locally, on Tuesday, the May 2022 Producer Price Index-Local Production is due, while on Thursday, June 30, Bank Negara will be releasing the detailed disclosure of Malaysia's international reserves as well as the monthly banking statistics for May 2022.

CALL FOR BANKS TO BETTER SAFEGUARD CUSTOMERS FROM FRAUD AND SCAMS



Devanesan
Evanson

**Chief Executive
Officer, Minority
Shareholders Watch
Group**

There has been a recent spate of phishing scams using malicious mobile applications. These have fuelled calls for banks and financial institutions to up their game in better safeguarding depositors' money from financial fraud and scams. With the prevalence of e-commerce and the age of digitalization, it is not surprising that many fall prey to various scams. Phishing scams via mobile apps first emerged in late 2021 and has been growing since with more cases reported. One can only speculate on the number of unreported cases. They go unreported for many reasons but mainly due to embarrassment and protecting their brand and reputation. Imagine if a bank was to report that it has been hacked. There may be a run on the bank of sorts. In such instances, regulators also

may adopt a stance where they sacrifice transparency (that a bank has been hacked) for the greater good of the banking system by protecting the name of the hacked bank. The end justifies the means, apparently. Scam victims were sometimes reported to have lost their hard-earned money and savings to the tune of six figures. Most of the victims claimed that they were not aware that money was being transferred out of their bank accounts until they received SMS notifications from banks. Also, they allege that no TAC (Transaction Authorisation Code)/OTP (One Time Password) was received for these transactions nor were there calls from banks to them to verify the suspicious and multiple transactions.

THE MODUS OPERANDI OF PHISHING SCAMS VIA APPS

The modus operandi of a phishing scam via mobile apps is fairly elaborated and sophisticated. To begin with, fraudsters display advertisements on social media by impersonating legitimate businesses with “too good to be true” deals e.g., huge discounts on products and services, cashback et cetera, to lure unsuspecting victims.

Once users clicked on the advertisement, they are led to a WhatsApp chat where they would be given a link to an app download which is not to the Google Play Store or Apple App Store. Instead, it is an Android Package Kit (APK) file – the file format that Android uses to distribute and install apps. For users to use the app, the app requires permission to read SMS messages (which is often necessary for other legitimate mobile apps).

Upon installation, the app requires users to set up an account with information such as mobile phone number and email address required for registration. Then, users are presented with payment options of credit cards and FPX bank transfers. However, usually, the first payment option would not be available (which is being done intentionally to prompt victims logging in to their bank

accounts). Thus, users would have no choice but resort to FPX bank transfers by keying in their username and password.

Now, since the username and password are captured, and the permission to read SMS (to get hold of TAC/OTP code) is granted, and voila! Scammers now get hold of everything they need to clear out your bank account.

RESPONSE FROM THE CENTRAL BANK

As the number of scams grow, the number of victims is climbing. But help was not forthcoming for victims. Banks were reported of being nonchalant in responding and handling customers' concerns. The view held was that it was the fault of the users who "willingly" (albeit unknowingly or carelessly) granted fraudsters access to their information. There was a risk that confidence in financial institutions may erode arising from the scams. With that, Bank Negara Malaysia had on 10 June called for banks and financial institutions to take adequate steps to protect their customers. BNM stated that it would take "appropriate supervisory and enforcement actions" against banks which fail to do so. The central bank also urged the public to be extra vigilant in safeguarding their personal information and downloading files or applications from unverified sources onto mobile devices. Besides, it had also required all licensed banks to ensure proper communication, as well as fair redress for customers who have taken necessary steps to protect themselves and have not acted fraudulently. Despite repeated assurance from banks and authorities that the current banking systems and security remain intact and not compromised, there were backlashes on social media against banks and authorities over their "inaction". Meanwhile, Singapore seems to be taking a harder approach in handling similar scams. Just last month, OCBC bank was slapped with an additional capital requirement of approximately S\$330 million by the Monetary Authority of Singapore (MAS) for its deficiencies in responding to a wave of spoofed SMS phishing scams in December 2021. The SMS phishing scams happened last December

involving SMSes impersonating OCBC Bank. A total of S\$13.7 million was lost in the spate of phishing scams involving 790 victims. The Bank later proceeded to make full goodwill payouts to fully cover scam victims' losses which were made as a one-off gesture and were not meant to set a general precedent for future cases. The additional capital requirement translated to a 0.21% impact on OCBC Bank's Group capital ratio.

WHAT DO HIGHER CAPITAL REQUIREMENTS MEAN FOR BANKS?

Capital requirements are imposed upon banks and financial holding companies to ensure their continuing ability to meet their obligations as and when they fall due while maintaining the confidence of customers, depositors, creditors, and other stakeholders in their dealings with the institution. The requirements also seek to further protect depositors and other senior creditors in a going concern situation by promoting an additional cushion of assets that may be used to meet claims in liquidation. However, the opponents to higher capital requirements argue that these may significantly increase the cost of bank credit, lower liquidity and hinder economic activity. As required by BNM, local financial institutions shall hold and maintain the following minimum capital adequacy ratios of 4.5%, 6.0% and 8.0% for their CET1 Capital Ratio, Tier 1 Capital Ratio and Total Capital Ratio. As for Domestic Systemically Important Banks (D-SIBs), they are required to maintain higher capital buffers to meet regulatory capital requirements that include a Higher Loss Absorbency (HLA) requirement. The applicable HLA requirement for the three DSIBs (Malayan Banking Berhad, CIMB Group Holdings Berhad and Public Bank Berhad) range from 0.5% to 1.0% of risk-weighted assets, at the consolidated level.

BANKS' DUTIES TO PREVENT, DETECT AND RESPOND TO SCAMS

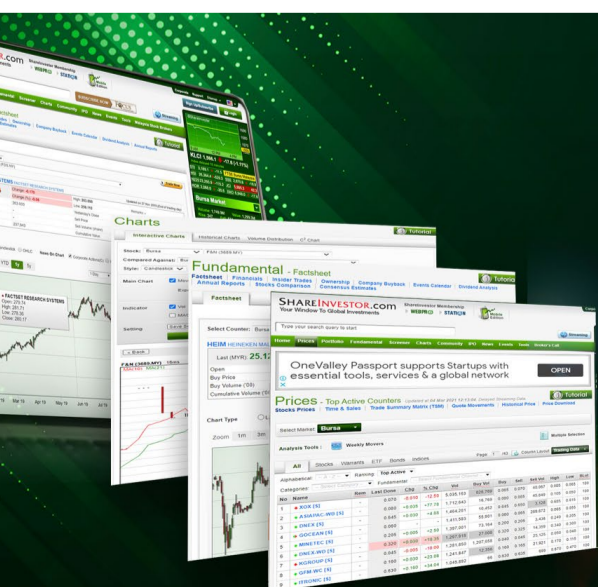
In announcing the additional capital requirements on OCBC Bank,

MAS also stressed that financial institutions must put in place robust measures to prevent, detect, and respond to scams. “This means ensuring that their controls remain effective against evolving scam tactics, and prompt actions are taken as soon as a scam is detected. Consumers must also remain vigilant against persistent attempts by scammers to deceive them into divulging their log-in credentials or initiating transfers themselves,” it said in a media release dated 26 May. Swiftly after the incidents, OCBC Bank had introduced a few enhanced security measures to combat financial fraud. These include lowering the default fund transfer daily limit, a cooling-off period of at least 12 hours for key account changes such as updating mobile number for notifications, and the rollout of a “kill switch” that enables customers to immediately freeze all their current and savings accounts in an emergency.

CONCLUSION

Alongside the advent of technology, fraudsters are becoming increasingly more sophisticated with their tactics. Many of today’s scams – especially those which are online – are merely modified versions of old schemes that have been used to fleece offline investors for years; only the medium has changed – from physical to virtual. Scammers tend to capitalise on greed to entice the vulnerable and unsuspecting. While financial institutions have their part to play in ensuring customers are protected, no amount of security could protect us if we are not vigilant and careful.

This article appeared in the The Observer, a weekly newsletter published by The Minority Shareholders Watch Group (MSWG) and reproduced here with their permission. Do follow MSWG's Twitter account at @MSWGMalaysia and share your thought on their tweets from time to time.



SHAREINVESTOR WEBPRO



Stock Markets Data
At Your Fingertips

Powerful browser-based market analytics platform.
Access from anywhere

click here to start your
9 Day free trial

DEFINITION: Insider Activity shows the trades made by substantial shareholders or directors of the company. Purchases by the directors and company share buyback may indicate the share price is undervalued and brings confidence to the price trend of the share price.



ShareInvestor WebPro > Fundamental > Insider Trades > click Search tab > Select Bursa > click Stock name > scroll up and leave at <Select Counter> Type Date Range for Announcement Date > click Search

Notice Period is 12 June 2022 - 18 June 2022

Effective Change Date	Stock Name	Buyer/ Seller Name [Classification]	Bought / (Sold) ['000]	No. of Shares After Trade ['000]	
			Total	Total	% Held
15 Jun 2022 - 16 Jun 2022	3A	MR TEO KWEE HOCK [SSH]	-812	48,466	9.911
13 Jun 2022 - 13 Jun 2022	3A	MR TEO KWEE HOCK [SSH]	16	49,279	10.052
08 Jun 2022 - 09 Jun 2022	ABLEGLOB	MR NG KENG HOE (HUANG QINGHE) [SSH]	156	37,302	12.129
08 Jun 2022 - 09 Jun 2022	ABLEGLOB	MR NG KENG HOE (HUANG QINGHE) [DIR/CEO]	156	37,302	12.129
14 Jun 2022 - 14 Jun 2022	ABMB	EMPLOYEES PROVIDENT FUND BOARD [SSH]	-305	175,466	11.334
13 Jun 2022 - 13 Jun 2022	ABMB	EMPLOYEES PROVIDENT FUND BOARD [SSH]	613	175,770	11.354
10 Jun 2022 - 10 Jun 2022	ABMB	EMPLOYEES PROVIDENT FUND BOARD [SSH]	-108	175,157	11.314
09 Jun 2022 - 09 Jun 2022	ABMB	EMPLOYEES PROVIDENT FUND BOARD [SSH]	-78	175,265	11.321
08 Jun 2022 - 08 Jun 2022	ABMB	EMPLOYEES PROVIDENT FUND BOARD [SSH]	-100	175,343	11.326
15 Jun 2022 - 15 Jun 2022	ADVPKG	MR LIEW KIT [SSH]	1	1,717	8.755
14 Jun 2022 - 14 Jun 2022	AEON	EMPLOYEES PROVIDENT FUND BOARD [SSH]	-651	143,899	10.249
08 Jun 2022 - 08 Jun 2022	AEON	EMPLOYEES PROVIDENT FUND BOARD [SSH]	-727	144,886	10.32
16 Jun 2022 - 16 Jun 2022	AIRPORT	KUMPULAN WANG PERSARAAN (DIPERBADANKAN) [SSH]	28	93,244	5.62
14 Jun 2022 - 14 Jun 2022	AIRPORT	EMPLOYEES PROVIDENT FUND BOARD [SSH]	29	253,911	15.303
14 Jun 2022 - 14 Jun 2022	AIRPORT	KUMPULAN WANG PERSARAAN (DIPERBADANKAN) [SSH]	18	93,154	5.615
09 Jun 2022 - 09 Jun 2022	AIRPORT	EMPLOYEES PROVIDENT FUND BOARD [SSH]	200	253,882	15.302
08 Jun 2022 - 08 Jun 2022	AIRPORT	EMPLOYEES PROVIDENT FUND BOARD [SSH]	400	253,682	15.29
09 Jun 2022 - 09 Jun 2022	ALCOM	ALLEYWAYS SDN. BHD. [SSH]	5,237	8,703	6.479
13 Jun 2022 - 13 Jun 2022	AMBANK	EMPLOYEES PROVIDENT FUND BOARD [SSH]	-13	315,249	9.515
10 Jun 2022 - 10 Jun 2022	AMBANK	EMPLOYEES PROVIDENT FUND BOARD [SSH]	-1,500	315,261	9.514
09 Jun 2022 - 09 Jun 2022	AMBANK	EMPLOYEES PROVIDENT FUND BOARD [SSH]	-1,000	316,761	9.558
15 Jun 2022 - 15 Jun 2022	ANCOMNY	MR LEE CHEUN WEI [SSH]	65	50,745	5.911
15 Jun 2022 - 15 Jun 2022	ANCOMNY	MR LEE CHEUN WEI [DIR/CEO]	65	50,745	5.911
13 Jun 2022 - 15 Jun 2022	ANCOMNY	DATO' SIEW KA WEI [DIR/CEO]	290	184,927	21.54
13 Jun 2022 - 15 Jun 2022	ANCOMNY	DATO' SIEW KA WEI [SSH]	290	184,927	21.54
08 Jun 2022 - 10 Jun 2022	ANCOMNY	DATO' SIEW KA WEI [DIR/CEO]	539	184,637	21.494
08 Jun 2022 - 10 Jun 2022	ANCOMNY	DATO' SIEW KA WEI [SSH]	539	184,637	21.494
16 Jun 2022 - 16 Jun 2022	ANNJOO	MR LIM SENG QWEE [SSH]	20	270,690	48.488
14 Jun 2022 - 14 Jun 2022	ANNJOO	MR LIM SENG QWEE [SSH]	20	270,670	48.485
13 Jun 2022 - 13 Jun 2022	ANNJOO	MR LIM SENG QWEE [SSH]	40	270,650	48.481
13 Jun 2022 - 15 Jun 2022	APM	DATO TAN HENG CHEW [DIR/CEO]	20	104,308	53.356
13 Jun 2022 - 15 Jun 2022	APM	DATO TAN HENG CHEW [SSH]	20	100,705	51.513
15 Jun 2022 - 15 Jun 2022	ATLAN	TAN SRI DATO' SERI VINCENT TAN CHEE YIUON [SSH]	-900	59,400	23.418
15 Jun 2022 - 15 Jun 2022	ATLAN	BERJAYA CORPORATION BERHAD [SSH]	-900	59,300	23.382
14 Jun 2022 - 14 Jun 2022	AXIATA	EMPLOYEES PROVIDENT FUND BOARD [SSH]	-1,000	1,552,422	16.917
13 Jun 2022 - 13 Jun 2022	AXIATA	EMPLOYEES PROVIDENT FUND BOARD [SSH]	-278	1,553,422	16.928
10 Jun 2022 - 10 Jun 2022	AXIATA	EMPLOYEES PROVIDENT FUND BOARD [SSH]	-558	1,553,699	16.931
09 Jun 2022 - 09 Jun 2022	AXIATA	EMPLOYEES PROVIDENT FUND BOARD [SSH]	-272	1,554,257	16.937
08 Jun 2022 - 08 Jun 2022	AXIATA	EMPLOYEES PROVIDENT FUND BOARD [SSH]	-123	1,554,529	16.94
15 Jun 2022 - 15 Jun 2022	AXREIT	KUMPULAN WANG PERSARAAN (DIPERBADANKAN) [SSH]	86	178,737	10.892
10 Jun 2022 - 10 Jun 2022	AXREIT	EMPLOYEES PROVIDENT FUND BOARD [SSH]	230	263,161	16.1
09 Jun 2022 - 09 Jun 2022	AXREIT	EMPLOYEES PROVIDENT FUND BOARD [SSH]	-96	262,931	16.086
08 Jun 2022 - 08 Jun 2022	AXREIT	EMPLOYEES PROVIDENT FUND BOARD [SSH]	1,104	263,027	16.092
14 Jun 2022 - 15 Jun 2022	BAUTO	PRUDENTIAL PLC [SSH]	1,268	61,634	5.303
14 Jun 2022 - 14 Jun 2022	BAUTO	DATO' AMER HAMZAH BIN AHMAD [SSH]	200	171,817	14.783
14 Jun 2022 - 15 Jun 2022	BAUTO	DATO' SRI YEOH CHOON SAN [DIR/CEO]	200	170,904	14.705
14 Jun 2022 - 15 Jun 2022	BAUTO	DATO' SRI YEOH CHOON SAN [SSH]	200	170,904	14.705
14 Jun 2022 - 14 Jun 2022	BAUTO	DATO' LEE KOK CHUAN [DIR/CEO]	200	170,694	14.687
14 Jun 2022 - 14 Jun 2022	BAUTO	DATO' LEE KOK CHUAN [SSH]	200	170,694	14.687
14 Jun 2022 - 14 Jun 2022	BAUTO	DYNAMIC MILESTONE SDN BHD [SSH]	200	167,373	14.401
13 Jun 2022 - 13 Jun 2022	BAUTO	EMPLOYEES PROVIDENT FUND BOARD [SSH]	-215	212,169	18.256
10 Jun 2022 - 10 Jun 2022	BAUTO	PRUDENTIAL PLC [SSH]	-111	60,365	5.194
09 Jun 2022 - 09 Jun 2022	BAUTO	PRUDENTIAL PLC [SSH]	218	60,477	5.204
14 Jun 2022 - 14 Jun 2022	BIMB	EMPLOYEES PROVIDENT FUND BOARD [SSH]	421	287,165	13.324
13 Jun 2022 - 13 Jun 2022	BIMB	EMPLOYEES PROVIDENT FUND BOARD [SSH]	434	286,743	13.304
10 Jun 2022 - 10 Jun 2022	BIMB	EMPLOYEES PROVIDENT FUND BOARD [SSH]	348	286,309	13.284
09 Jun 2022 - 09 Jun 2022	BIMB	EMPLOYEES PROVIDENT FUND BOARD [SSH]	1,000	285,962	13.268
08 Jun 2022 - 08 Jun 2022	BIMB	EMPLOYEES PROVIDENT FUND BOARD [SSH]	99	284,962	13.222
17 Jun 2022 - 17 Jun 2022	BINTAI	ENCIK NOOR AZRI BIN NOOR AZERA [DIR/CEO]	500	10,800	1.266
07 Jun 2022 - 07 Jun 2022	BIOHLDG	MR HON TIAN KOK@WILLIAM [SSH]	150,000	150,000	10.855
14 Jun 2022 - 14 Jun 2022	BJFOOD	TAN SRI DATO' SERI VINCENT TAN CHEE YIUON [SSH]	-500	208,329	57.782
14 Jun 2022 - 14 Jun 2022	BJFOOD	BERJAYA CORPORATION BERHAD [SSH]	-500	184,291	51.115
14 Jun 2022 - 14 Jun 2022	BJFOOD	BERJAYA GROUP BERHAD [SSH]	-500	184,291	51.115
14 Jun 2022 - 14 Jun 2022	BJFOOD	DATO' SYDNEY LAWRENCE QUAYS [DIR/CEO]	-53	880	0.244
09 Jun 2022 - 10 Jun 2022	BJFOOD	TAN SRI DATO' SERI VINCENT TAN CHEE YIUON [SSH]	-3,500	208,829	57.921
15 Jun 2022 - 15 Jun 2022	BJLAND	TAN SRI DATO' SERI VINCENT TAN CHEE YIUON [SSH]	-140,000	4,070,663	82.728
15 Jun 2022 - 15 Jun 2022	BJLAND	BERJAYA CORPORATION BERHAD [SSH]	-140,000	3,728,922	75.783
15 Jun 2022 - 15 Jun 2022	BJLAND	BERJAYA GROUP BERHAD [SSH]	-140,000	3,354,422	68.172
15 Jun 2022 - 15 Jun 2022	BJLAND	TERAS MEWAH SDN BHD [SSH]	-140,000	969,289	19.699

Notice Period is 12 June 2022 - 18 June 2022

Effective Change Date	Stock Name	Buyer/ Seller Name [Classification]	Bought / (Sold) ['000]	No. of Shares After Trade ['000]	
			Total	Total	% Held
09 Jun 2022 - 09 Jun 2022	BJLAND	JUARA SEJATI SDN BHD [SSH]	1,800	1,672,661	33.993
09 Jun 2022 - 09 Jun 2022	BJLAND	BIZURAI BIJAK SDN BHD [SSH]	-1,800	877,986	17.844
17 Jun 2022 - 17 Jun 2022	BORNOIL	DATUK JOSEPH LEE YOK MIN @ AMBROSE [DIR/CEO]	100	1,429,497	19.091
16 Jun 2022 - 16 Jun 2022	BORNOIL	DATUK JOSEPH LEE YOK MIN @ AMBROSE [DIR/CEO]	100	1,429,397	19.089
15 Jun 2022 - 15 Jun 2022	BORNOIL	DATUK JOSEPH LEE YOK MIN @ AMBROSE [DIR/CEO]	100	1,429,297	19.088
14 Jun 2022 - 14 Jun 2022	BORNOIL	DATUK JOSEPH LEE YOK MIN @ AMBROSE [DIR/CEO]	500	1,429,197	19.087
16 Jun 2022 - 16 Jun 2022	BSLCORP	MR HOO WAI KEONG [DIR/CEO]	40	40	0.014
15 Jun 2022 - 15 Jun 2022	BSLCORP	MR CHEW KHAI LIONG [DIR/CEO]	20	20	0.007
14 Jun 2022 - 14 Jun 2022	BURSA	EMPLOYEES PROVIDENT FUND BOARD [SSH]	193	78,078	9.648
13 Jun 2022 - 13 Jun 2022	BURSA	EMPLOYEES PROVIDENT FUND BOARD [SSH]	175	77,885	9.624
10 Jun 2022 - 10 Jun 2022	BURSA	EMPLOYEES PROVIDENT FUND BOARD [SSH]	224	77,710	9.602
09 Jun 2022 - 09 Jun 2022	BURSA	EMPLOYEES PROVIDENT FUND BOARD [SSH]	167	77,486	9.574
08 Jun 2022 - 08 Jun 2022	BURSA	EMPLOYEES PROVIDENT FUND BOARD [SSH]	109	77,319	9.554
10 Jun 2022 - 10 Jun 2022	CCB	JARDINE CYCLE & CARRIAGE LIMITED [SSH]	4	90,594	89.925
10 Jun 2022 - 10 Jun 2022	CCB	JARDINE STRATEGIC LIMITED [SSH]	4	90,594	89.925
10 Jun 2022 - 10 Jun 2022	CCB	JARDINE STRATEGIC SINGAPORE PTE LTD [SSH]	4	90,594	89.925
10 Jun 2022 - 10 Jun 2022	CCB	JARDINE MATHESON HOLDINGS LIMITED [SSH]	4	90,594	89.925
10 Jun 2022 - 10 Jun 2022	CCB	JMH INVESTMENTS LIMITED [SSH]	4	90,594	89.925
10 Jun 2022 - 10 Jun 2022	CCB	JSH ASIAN HOLDINGS LIMITED [SSH]	4	90,594	89.925
03 Jun 2022 - 03 Jun 2022	CHHB	TAN SRI LEE KIM TIONG @ LEE KIM YEW [SSH]	-4,000	184,275	62.361
03 Jun 2022 - 03 Jun 2022	CHHB	TAN SRI LEE KIM TIONG @ LEE KIM YEW [DIR/CEO]	-4,000	184,275	62.361
10 Jun 2022 - 10 Jun 2022	CHHB	TAN SRI LEE KIM TIONG @ LEE KIM YEW [SSH]	2,000	187,415	62.946
10 Jun 2022 - 10 Jun 2022	CHHB	TAN SRI LEE KIM TIONG @ LEE KIM YEW [DIR/CEO]	2,000	187,415	62.946
10 Jun 2022 - 10 Jun 2022	CHHB	TAN SRI LEE KIM TIONG @ LEE KIM YEW [SSH]	-2,000	89,956	70.094
10 Jun 2022 - 10 Jun 2022	CHHB	TAN SRI LEE KIM TIONG @ LEE KIM YEW [DIR/CEO]	-2,000	89,956	70.094
13 Jun 2022 - 13 Jun 2022	CHOOBEE	MR SOON CHENG HAI [DIR/CEO]	10	70,894	54.23
13 Jun 2022 - 13 Jun 2022	CHOOBEE	MR SOON CHENG HAI [SSH]	10	70,894	54.23
15 Jun 2022 - 15 Jun 2022	CIHLDG	DATO' SUKUMARAN S/O RAMASAMY [DIR/CEO]	43	3,473	2.144
16 Jun 2022 - 16 Jun 2022	CIMB	KUMPULAN WANG PERSARAAN (DIPERBADANKAN) [SSH]	-134	702,442	6.71
15 Jun 2022 - 15 Jun 2022	CIMB	KUMPULAN WANG PERSARAAN (DIPERBADANKAN) [SSH]	2,000	702,576	6.71
14 Jun 2022 - 14 Jun 2022	CIMB	EMPLOYEES PROVIDENT FUND BOARD [SSH]	871	1,713,034	16.35
13 Jun 2022 - 13 Jun 2022	CIMB	EMPLOYEES PROVIDENT FUND BOARD [SSH]	2,210	1,712,163	16.35
14 Jun 2022 - 14 Jun 2022	CIMB	KUMPULAN WANG PERSARAAN (DIPERBADANKAN) [SSH]	2,180	700,576	6.69
10 Jun 2022 - 10 Jun 2022	CIMB	EMPLOYEES PROVIDENT FUND BOARD [SSH]	1,066	1,709,953	16.33
09 Jun 2022 - 09 Jun 2022	CIMB	EMPLOYEES PROVIDENT FUND BOARD [SSH]	-238	1,708,886	16.32
08 Jun 2022 - 08 Jun 2022	CIMB	EMPLOYEES PROVIDENT FUND BOARD [SSH]	-384	1,709,125	16.32
16 Jun 2022 - 16 Jun 2022	CITAGLB	MR CHEN KHAI VOON [SSH]	3,330	138,224	13.023
13 Jun 2022 - 13 Jun 2022	CITAGLB	DATO' SRI TENGKU UZIR BIN TENGKU DATO' UBADILLAH [DIR/CEO]	-1,900	42,059	3.963
13 Jun 2022 - 13 Jun 2022	CITAGLB	DATO' SRI TENGKU UZIR BIN TENGKU DATO' UBADILLAH [DIR/CEO]	-100	63,964	34.907
13 Jun 2022 - 13 Jun 2022	CJECN	MR YEAP KHOO SOON EDWIN [DIR/CEO]	100	3,482	0.598
16 Jun 2022 - 16 Jun 2022	CRG	DATO' SRI CHIANG FONG YEE [DIR/CEO]	50	272,418	33.813
16 Jun 2022 - 16 Jun 2022	CRG	DATO' SRI CHIANG FONG YEE [SSH]	50	198,778	24.673
13 Jun 2022 - 15 Jun 2022	CRG	DATO' SRI CHIANG FONG YEE [DIR/CEO]	1,741	272,368	33.807
13 Jun 2022 - 15 Jun 2022	CRG	DATO' SRI CHIANG FONG YEE [SSH]	1,741	198,728	24.667
14 Jun 2022 - 14 Jun 2022	CYPARK	TAN SRI RAZALI BIN ISMAIL [DIR/CEO]	-2,500	20,335	3.454
10 Jun 2022 - 10 Jun 2022	DAYANG	URUSHARTA JAMAAH SDN. BHD. [SSH]	-450	91,727	7.923
09 Jun 2022 - 09 Jun 2022	DAYANG	URUSHARTA JAMAAH SDN. BHD. [SSH]	-1,774	92,177	7.962
08 Jun 2022 - 08 Jun 2022	DAYANG	URUSHARTA JAMAAH SDN. BHD. [SSH]	465	93,951	8.115
16 Jun 2022 - 16 Jun 2022	DBHD	JOHOR CORPORATION [SSH]	12	272,407	83.361
16 Jun 2022 - 16 Jun 2022	DBHD	JLAND GROUP SDN. BHD. (FORMERLY KNOWN AS ABSOLUTE AMBIENT SDN. BHD.) [SSH]	12	228,443	69.907
15 Jun 2022 - 15 Jun 2022	DBHD	JOHOR CORPORATION [SSH]	5	272,395	83.358
15 Jun 2022 - 15 Jun 2022	DBHD	JLAND GROUP SDN. BHD. (FORMERLY KNOWN AS ABSOLUTE AMBIENT SDN. BHD.) [SSH]	5	228,431	69.904
13 Jun 2022 - 13 Jun 2022	DBHD	JOHOR CORPORATION [SSH]	4	272,390	83.356
13 Jun 2022 - 13 Jun 2022	DBHD	JLAND GROUP SDN. BHD. (FORMERLY KNOWN AS ABSOLUTE AMBIENT SDN. BHD.) [SSH]	4	228,426	69.902
10 Jun 2022 - 10 Jun 2022	DBHD	JOHOR CORPORATION [SSH]	0.1	272,386	83.355
10 Jun 2022 - 10 Jun 2022	DBHD	JLAND GROUP SDN. BHD. (FORMERLY KNOWN AS ABSOLUTE AMBIENT SDN. BHD.) [SSH]	0.1	228,422	69.901
14 Jun 2022 - 14 Jun 2022	DIALOG	EMPLOYEES PROVIDENT FUND BOARD [SSH]	1,541	792,970	14.05
13 Jun 2022 - 13 Jun 2022	DIALOG	EMPLOYEES PROVIDENT FUND BOARD [SSH]	2,000	791,428	14.03
09 Jun 2022 - 09 Jun 2022	DIALOG	EMPLOYEES PROVIDENT FUND BOARD [SSH]	308	789,428	13.99
08 Jun 2022 - 08 Jun 2022	DIALOG	EMPLOYEES PROVIDENT FUND BOARD [SSH]	692	789,120	13.99
14 Jun 2022 - 14 Jun 2022	DIGI	EMPLOYEE PROVIDENT FUND BOARD [SSH]	-500	1,162,025	14.946
13 Jun 2022 - 13 Jun 2022	DIGI	EMPLOYEE PROVIDENT FUND BOARD [SSH]	-808	1,162,525	14.952
10 Jun 2022 - 10 Jun 2022	DIGI	EMPLOYEE PROVIDENT FUND BOARD [SSH]	-186	1,163,333	14.963
09 Jun 2022 - 09 Jun 2022	DIGI	EMPLOYEE PROVIDENT FUND BOARD [SSH]	-232	1,163,519	14.965
08 Jun 2022 - 08 Jun 2022	DIGI	EMPLOYEE PROVIDENT FUND BOARD [SSH]	-440	1,163,751	14.968

Disclaimer: The Information in Insider Activity is extracted from www.shareinvestor.com/fundamental/insider_trades. The information on this page is provided as a service to readers. It does not constitute financial advice and/or any investment recommendations. We assume no liability for damages resulting from or arising out of the use of such information. Whilst every effort is made to ensure accuracy, the information presented is not the official record of shareholder filings. Readers are advised to read the original filings on the Bursa Malaysia website at www.bursamalaysia.com



STROM
SWISS TIMEPIECES & JEWELLERY



Notice Period is 12 June 2022 - 18 June 2022

Effective Change Date	Stock Name	Buyer/ Seller Name [Classification]	Bought / (Sold) ['000]	No. of Shares After Trade ['000]	
			Total	Total	% Held
15 Jun 2022 - 15 Jun 2022	DPHARMA	PERMODALAN NASIONAL BERHAD [SSH]	-42	408,597	42.909
15 Jun 2022 - 15 Jun 2022	DPHARMA	YAYASAN PELABURAN BUMIPUTRA [SSH]	-42	408,597	42.909
14 Jun 2022 - 14 Jun 2022	DPHARMA	PERMODALAN NASIONAL BERHAD [SSH]	-203	408,639	42.913
14 Jun 2022 - 14 Jun 2022	DPHARMA	YAYASAN PELABURAN BUMIPUTRA [SSH]	-203	408,639	42.913
10 Jun 2022 - 10 Jun 2022	DPHARMA	PERMODALAN NASIONAL BERHAD [SSH]	-392	408,842	42.935
10 Jun 2022 - 10 Jun 2022	DPHARMA	YAYASAN PELABURAN BUMIPUTRA [SSH]	-392	408,842	42.935
09 Jun 2022 - 09 Jun 2022	DPHARMA	YAYASAN PELABURAN BUMIPUTRA [SSH]	-920	409,234	42.976
09 Jun 2022 - 09 Jun 2022	DPHARMA	PERMODALAN NASIONAL BERHAD [SSH]	-920	409,234	42.976
08 Jun 2022 - 08 Jun 2022	DPHARMA	PERMODALAN NASIONAL BERHAD [SSH]	-114	410,154	43.073
08 Jun 2022 - 08 Jun 2022	DPHARMA	YAYASAN PELABURAN BUMIPUTRA [SSH]	-114	410,154	43.073
09 Jun 2022 - 09 Jun 2022	DSOINIC	URUSHARTA JAMAAH SDN. BHD. [SSH]	10	267,001	9.321
08 Jun 2022 - 08 Jun 2022	DSOINIC	URUSHARTA JAMAAH SDN. BHD. [SSH]	-150	266,990	9.321
15 Jun 2022 - 15 Jun 2022	ECM	DATO LIM KIAN ONN [DIR/CEO]	2,118	198,258	41.31
15 Jun 2022 - 15 Jun 2022	ECM	DATO LIM KIAN ONN [SSH]	2,118	198,258	41.31
13 Jun 2022 - 14 Jun 2022	ECM	DATO LIM KIAN ONN [SSH]	265	196,140	40.869
13 Jun 2022 - 14 Jun 2022	ECM	DATO LIM KIAN ONN [DIR/CEO]	265	196,140	40.869
10 Jun 2022 - 10 Jun 2022	ECM	DATO LIM KIAN ONN [DIR/CEO]	2,616	195,875	40.814
10 Jun 2022 - 10 Jun 2022	ECM	DATO LIM KIAN ONN [SSH]	2,616	195,875	40.814
16 Jun 2022 - 16 Jun 2022	ECOFIRS	DATO' TIONG KWING HEE [SSH]	33	74,915	6.437
16 Jun 2022 - 16 Jun 2022	ECOFIRS	DATO' TIONG KWING HEE [DIR/CEO]	33	74,915	6.437
14 Jun 2022 - 14 Jun 2022	ECOFIRS	DATO' TIONG KWING HEE [DIR/CEO]	194	74,882	6.434
09 Jun 2022 - 09 Jun 2022	ECOFIRS	DATO' TIONG KWING HEE [DIR/CEO]	1,165	74,688	6.417
14 Jun 2022 - 14 Jun 2022	ECONBHD	EMPLOYEES PROVIDENT FUND BOARD [SSH]	-1,000	108,928	7.685
13 Jun 2022 - 13 Jun 2022	ECONBHD	EMPLOYEES PROVIDENT FUND BOARD [SSH]	-1,000	109,928	7.755
10 Jun 2022 - 10 Jun 2022	ECONBHD	EMPLOYEES PROVIDENT FUND BOARD [SSH]	-1,500	110,928	7.826
09 Jun 2022 - 09 Jun 2022	ECONBHD	EMPLOYEES PROVIDENT FUND BOARD [SSH]	-3,000	112,428	7.931
08 Jun 2022 - 08 Jun 2022	ECONBHD	EMPLOYEES PROVIDENT FUND BOARD [SSH]	-3,155	115,428	8.143
09 Jun 2022 - 09 Jun 2022	EDGENTA	URUSHARTA JAMAAH SDN BHD [SSH]	276	48,309	5.809
13 Jun 2022 - 13 Jun 2022	EITA	MR FU WING HOONG [SSH]	80	51,964	19.978
13 Jun 2022 - 13 Jun 2022	EITA	MR FU WING HOONG [DIR/CEO]	80	51,964	19.978
13 Jun 2022 - 13 Jun 2022	EITA	MADAM LEE PEK SEE [SSH]	80	51,922	19.961
13 Jun 2022 - 13 Jun 2022	EITA	MR LIM JOO SWEE [DIR/CEO]	10	40,427	15.542
13 Jun 2022 - 13 Jun 2022	EITA	MR LIM JOO SWEE [SSH]	10	40,427	15.542
13 Jun 2022 - 13 Jun 2022	EITA	MADAM GOH KIN BEE [SSH]	10	40,320	15.501
14 Jun 2022 - 14 Jun 2022	ENEST	MR TAN TEH JIE [DIR/CEO]	5	80,547	17.321
14 Jun 2022 - 14 Jun 2022	ENEST	MR TAN TEH JIE [SSH]	5	80,542	17.321
14 Jun 2022 - 15 Jun 2022	ENGTEX	DATIN YAP SENG KUAN [DIR/CEO]	187	123,717	28.426
14 Jun 2022 - 15 Jun 2022	ENGTEX	DATO' NG HOOK [SSH]	187	123,717	28.426
14 Jun 2022 - 15 Jun 2022	ENGTEX	DATO' NG HOOK [DIR/CEO]	187	123,717	28.426
14 Jun 2022 - 15 Jun 2022	ENGTEX	DATIN YAP SENG KUAN [SSH]	187	123,717	28.426
10 Jun 2022 - 13 Jun 2022	ENGTEX	DATIN YAP SENG KUAN [DIR/CEO]	460	123,530	28.383
10 Jun 2022 - 13 Jun 2022	ENGTEX	DATO' NG HOOK [SSH]	460	123,530	28.383
10 Jun 2022 - 13 Jun 2022	ENGTEX	DATO' NG HOOK [DIR/CEO]	460	123,530	28.383
10 Jun 2022 - 13 Jun 2022	ENGTEX	DATIN YAP SENG KUAN [SSH]	460	123,530	28.383
14 Jun 2022 - 15 Jun 2022	ENG-TEX-WB	NG YIK SOON [DIR/CEO]	400	3,989	3.656
14 Jun 2022 - 14 Jun 2022	FFB	EMPLOYEES PROVIDENT FUND BOARD [SSH]	0.5	101,109	5.442
13 Jun 2022 - 15 Jun 2022	FFB	MR LOI TUAN EE [SSH]	3,338	832,448	44.805
13 Jun 2022 - 15 Jun 2022	FFB	MR LOI TUAN EE [DIR/CEO]	3,338	832,448	44.805
14 Jun 2022 - 16 Jun 2022	FLEXI	MR TAN KONG LEONG [DIR/CEO]	300	125,453	44.111
14 Jun 2022 - 16 Jun 2022	FLEXI	PHITCHAYA ARSANGKU [SSH]	300	125,453	44.111
14 Jun 2022 - 16 Jun 2022	FLEXI	TAN KONG LEONG [SSH]	300	125,453	44.111
10 Jun 2022 - 13 Jun 2022	FLEXI	TAN KONG LEONG [SSH]	200	125,153	44.006
10 Jun 2022 - 13 Jun 2022	FLEXI	MR TAN KONG LEONG [DIR/CEO]	200	125,153	44.006
10 Jun 2022 - 13 Jun 2022	FLEXI	PHITCHAYA ARSANGKU [SSH]	200	125,153	44.005
10 Jun 2022 - 10 Jun 2022	FM	MR ONG LOOI CHAI [DIR/CEO]	60	10,578	1.894
14 Jun 2022 - 14 Jun 2022	FOCUSP	DATO LIAW CHOO LIANG [SSH]	-300	180,078	54.57
14 Jun 2022 - 14 Jun 2022	FOCUSP	DATIN GOH POI EONG [DIR/CEO]	-300	180,078	54.569
14 Jun 2022 - 14 Jun 2022	FOCUSP	DATO LIAW CHOO LIANG [DIR/CEO]	-300	180,078	54.57
14 Jun 2022 - 14 Jun 2022	FOCUSP	DATIN GOH POI EONG [SSH]	-300	180,078	54.569
13 Jun 2022 - 13 Jun 2022	FPGROUP	DATO' ONG CHOO HENG [SSH]	100	187,150	34.637
13 Jun 2022 - 13 Jun 2022	FPGROUP	DATO' ONG CHOO HENG [DIR/CEO]	100	187,150	34.637
13 Jun 2022 - 13 Jun 2022	GAMUDA	EMPLOYEES PROVIDENT FUND BOARD (EPF BOARD) [SSH]	310	374,294	14.66
10 Jun 2022 - 10 Jun 2022	GAMUDA	EMPLOYEES PROVIDENT FUND BOARD (EPF BOARD) [SSH]	869	373,984	14.64
13 Jun 2022 - 13 Jun 2022	GAMUDA	KUMPULAN WANG PERSARAAN (DIPERBADANKAN) [KWAP] [SSH]	245	204,890	8.02
09 Jun 2022 - 09 Jun 2022	GAMUDA	EMPLOYEES PROVIDENT FUND BOARD (EPF BOARD) [SSH]	1,135	373,115	14.61
08 Jun 2022 - 08 Jun 2022	GAMUDA	EMPLOYEES PROVIDENT FUND BOARD (EPF BOARD) [SSH]	99	371,979	14.56
13 Jun 2022 - 13 Jun 2022	GASMSIA	LEMBAGA TABUNG HAJI [SSH]	482	99,900	7.779
14 Jun 2022 - 14 Jun 2022	GBGAQRS	DATO' KAMISAH BINTI JOHAN [DIR/CEO]	100	52,231	9.623
14 Jun 2022 - 14 Jun 2022	GBGAQRS	DATO' KAMISAH BINTI JOHAN [SSH]	100	52,231	9.623
13 Jun 2022 - 13 Jun 2022	GBGAQRS	DATO' KAMISAH BINTI JOHAN [DIR/CEO]	100	52,131	9.605
13 Jun 2022 - 13 Jun 2022	GBGAQRS	DATO' KAMISAH BINTI JOHAN [SSH]	100	52,131	9.605
09 Jun 2022 - 10 Jun 2022	GBGAQRS	DATO' KAMISAH BINTI JOHAN [SSH]	200	52,031	9.586
09 Jun 2022 - 10 Jun 2022	GBGAQRS	DATO' KAMISAH BINTI JOHAN [DIR/CEO]	200	52,031	9.586
14 Jun 2022 - 14 Jun 2022	GCB	MR TAY HOE LIAN [DIR/CEO]	955	30,367	2.866
14 Jun 2022 - 14 Jun 2022	GCB-WB	MR TAY HOE LIAN [DIR/CEO]	955	433	0.373
08 Jun 2022 - 09 Jun 2022	GDEX	MR TEONG TECK LEAN [DIR/CEO]	1,488	2,201,730	39.457
08 Jun 2022 - 09 Jun 2022	GDEX	MR TEONG TECK LEAN [SSH]	1,488	2,201,730	39.457
10 Jun 2022 - 10 Jun 2022	GENP	EMPLOYEES PROVIDENT FUND BOARD [SSH]	-31	111,899	12.472
30 May 2022 - 30 May 2022	GENTING	MR TAN KONG HAN [DIR/CEO]	100	1,140	0.03
16 Jun 2022 - 17 Jun 2022	GTRONIC	MR NG KWENG CHONG [DIR/CEO]	8	39,498	5.9
13 Jun 2022 - 15 Jun 2022	GTRONIC	MR NG KWENG CHONG [DIR/CEO]	8	39,490	5.9
15 Jun 2022 - 15 Jun 2022	HARBOUR	SAMARANG UCITS - SAMARANG ASIAN PROSPERITY [SSH]	118	21,836	5.478
14 Jun 2022 - 14 Jun 2022	HARBOUR	SAMARANG UCITS - SAMARANG ASIAN PROSPERITY [SSH]	270	21,717	5.449
14 Jun 2022 - 14 Jun 2022	HARTA	EMPLOYEES PROVIDENT FUND BOARD [SSH]	-543	260,869	7.611
13 Jun 2022 - 13 Jun 2022	HARTA	EMPLOYEES PROVIDENT FUND BOARD [SSH]	-52	261,412	7.627
09 Jun 2022 - 09 Jun 2022	HARTA	EMPLOYEES PROVIDENT FUND BOARD [SSH]	-1,000	261,464	7.628
08 Jun 2022 - 08 Jun 2022	HARTA	EMPLOYEES PROVIDENT FUND BOARD [SSH]	-1,003	262,464	7.657
14 Jun 2022 - 14 Jun 2022	HEXTAR	MADAM LEE CHOOI KENG [DIR/CEO]	17	1,883	0.145
13 Jun 2022 - 15 Jun 2022	HEXTAR	DATO' ONG CHOO MENG [SSH]	-12,423	844,283	64.864
13 Jun 2022 - 15 Jun 2022	HEXTAR	DATO' ONG CHOO MENG [DIR/CEO]	-12,423	844,283	64.864
13 Jun 2022 - 15 Jun 2022	HEXTAR	HEXTAR HOLDINGS SDN. BHD. [SSH]	-12,423	729,230	56.025
13 Jun 2022 - 15 Jun 2022	HEXTAR	DATO' ONG SOON HO [DIR/CEO]	-12,423	729,230	56.025
13 Jun 2022 - 15 Jun 2022	HEXTAR	DATO' ONG SOON HO [SSH]	-12,423	729,230	56.025

Notice Period is 12 June 2022 - 18 June 2022

Effective Change Date	Stock Name	Buyer/ Seller Name [Classification]	Bought / (Sold) ['000]	No. of Shares After Trade ['000]	
			Total	Total	% Held
09 Jun 2022 - 13 Jun 2022	HEXTAR	MADAM LEE CHOOI KENG [DIR/CEO]	50	1,867	0.143
14 Jun 2022 - 14 Jun 2022	HLBANK	EMPLOYEES PROVIDENT FUND BOARD [SSH]	44	206,106	9.878
13 Jun 2022 - 13 Jun 2022	HLBANK	EMPLOYEES PROVIDENT FUND BOARD [SSH]	239	206,063	9.875
10 Jun 2022 - 10 Jun 2022	HLBANK	EMPLOYEES PROVIDENT FUND BOARD [SSH]	962	205,824	9.864
09 Jun 2022 - 09 Jun 2022	HLBANK	EMPLOYEES PROVIDENT FUND BOARD [SSH]	36	204,862	9.818
08 Jun 2022 - 08 Jun 2022	HLBANK	EMPLOYEES PROVIDENT FUND BOARD [SSH]	-15	204,825	9.816
13 Jun 2022 - 13 Jun 2022	HSSEB	DATO' MOHD ZAKHIR SIDDIQY BIN SIDEK [DIR/CEO]	60	1,593	0.321
09 Jun 2022 - 09 Jun 2022	HSSEB	DATO' MOHD ZAKHIR SIDDIQY BIN SIDEK [DIR/CEO]	349	1,532	0.309
16 Jun 2022 - 16 Jun 2022	IGBREIT	KUMPULAN WANG PERSARAAN (DIPERBADANKAN) [SSH]	-368	263,182	7.353
15 Jun 2022 - 15 Jun 2022	IGBREIT	KUMPULAN WANG PERSARAAN (DIPERBADANKAN) [SSH]	-295	263,550	7.363
14 Jun 2022 - 14 Jun 2022	IHH	EMPLOYEES PROVIDENT FUND BOARD [SSH]	406	856,597	9.731
13 Jun 2022 - 13 Jun 2022	IHH	EMPLOYEES PROVIDENT FUND BOARD [SSH]	2,957	856,191	9.726
10 Jun 2022 - 10 Jun 2022	IHH	EMPLOYEES PROVIDENT FUND BOARD [SSH]	81	853,234	9.693
09 Jun 2022 - 09 Jun 2022	IHH	EMPLOYEES PROVIDENT FUND BOARD [SSH]	505	853,153	9.692
08 Jun 2022 - 08 Jun 2022	IHH	EMPLOYEES PROVIDENT FUND BOARD [SSH]	-713	852,648	9.686
16 Jun 2022 - 16 Jun 2022	IJM	LIEW HAU SENG [DIR/CEO]	48	1,291	0.037
16 Jun 2022 - 16 Jun 2022	IJM	LEE CHUN FAI [DIR/CEO]	78	1,228	0.035
08 Jun 2022 - 08 Jun 2022	IJM	URUSHARTA JAMAAH SDN BHD [SSH]	1,200	215,874	6.116
16 Jun 2022 - 16 Jun 2022	IMPIANA	DATO' SERI ISMAIL @ FAROUK BIN ABDULLAH [DIR/CEO]	-200	644,571	44.628
16 Jun 2022 - 16 Jun 2022	IMPIANA	DATO' SERI ISMAIL @ FAROUK BIN ABDULLAH [SSH]	-200	644,571	44.628
16 Jun 2022 - 16 Jun 2022	IMPIANA	IMPIANA SDN BHD [SSH]	-200	350,827	24.29
14 Jun 2022 - 14 Jun 2022	INARI	EMPLOYEES PROVIDENT FUND BOARD [SSH]	65	301,629	8.136
15 Jun 2022 - 15 Jun 2022	INARI	KUMPULAN WANG PERSARAAN (DIPERBADANKAN) [SSH]	-224	342,770	9.246
13 Jun 2022 - 13 Jun 2022	INARI	EMPLOYEES PROVIDENT FUND BOARD [SSH]	1,000	301,564	8.134
14 Jun 2022 - 14 Jun 2022	INARI	KUMPULAN WANG PERSARAAN (DIPERBADANKAN) [SSH]	2,000	342,994	9.252
10 Jun 2022 - 10 Jun 2022	INARI	EMPLOYEES PROVIDENT FUND BOARD [SSH]	1,865	300,564	8.107
10 Jun 2022 - 10 Jun 2022	INARI	KUMPULAN WANG PERSARAAN (DIPERBADANKAN) [SSH]	1,000	340,994	9.198
13 Jun 2022 - 14 Jun 2022	INTA	MR LIM OOI JOO [DIR/CEO]	128	235,154	43.933
13 Jun 2022 - 14 Jun 2022	INTA	MR LIM OOI JOO [SSH]	128	235,154	43.933
13 Jun 2022 - 14 Jun 2022	INTA	MADAM KOK CHIN SEOW [SSH]	128	187,423	35.015
13 Jun 2022 - 14 Jun 2022	INTA	APEXJAYA INDUSTRIES SDN BHD [SSH]	128	186,116	34.771
08 Jun 2022 - 10 Jun 2022	INTA	MR LIM OOI JOO [SSH]	72	235,026	43.909
08 Jun 2022 - 10 Jun 2022	INTA	MR LIM OOI JOO [DIR/CEO]	72	235,026	43.909
08 Jun 2022 - 10 Jun 2022	INTA	MADAM KOK CHIN SEOW [SSH]	72	187,295	34.991
08 Jun 2022 - 10 Jun 2022	INTA	APEXJAYA INDUSTRIES SDN BHD [SSH]	72	185,988	34.747
13 Jun 2022 - 14 Jun 2022	INTA-WA	MR LIM OOI JOO [DIR/CEO]	32	58,821	43.958
08 Jun 2022 - 10 Jun 2022	INTA-WA	MR LIM OOI JOO [DIR/CEO]	52	58,789	43.934
27 May 2022 - 15 Jun 2022	JADEM	LEGACY TRUST COMPANY LIMITED [SSH]	-6,730	41,470	12.642
27 May 2022 - 15 Jun 2022	JADEM	GLOBAL LEGACY PARTNERS SDN. BHD. [SSH]	-6,730	41,470	12.642
15 Jun 2022 - 15 Jun 2022	JADEM	DATO KHOO YIK CHOU [DIR/CEO]	1,725	8,038	2.451
13 Jun 2022 - 14 Jun 2022	JADEM	DATO KHOO YIK CHOU [DIR/CEO]	2,180	6,313	1.925
14 Jun 2022 - 14 Jun 2022	JIANKUN	DATO' SAIFUL NIZAM BIN MOHD YUSOFF D.I.M.P [DIR/CEO]	4,200	4,200	1.797
16 Jun 2022 - 16 Jun 2022	KAB	DATO' LAI KENG ONN [DIR/CEO]	-120,000	596,230	33.16
16 Jun 2022 - 16 Jun 2022	KAB	DATO' LAI KENG ONN [SSH]	-120,000	596,230	33.16
16 Jun 2022 - 16 Jun 2022	KAB	STOCQTECH SDN. BHD. [SSH]	120,000	162,900	9.061
14 Jun 2022 - 14 Jun 2022	KAB	DATO' LAI KENG ONN [SSH]	1,000	596,230	33.17
14 Jun 2022 - 14 Jun 2022	KAB	DATO' LAI KENG ONN [DIR/CEO]	1,000	596,230	33.17
15 Jun 2022 - 15 Jun 2022	KARYON	MADAM TEOH KOOI KIM [SSH]	520	100,511	21.13
15 Jun 2022 - 15 Jun 2022	KARYON	DR CHUA KEE LAM [SSH]	520	67,548	14.2
15 Jun 2022 - 15 Jun 2022	KARYON	CHUA LING HONG [DIR/CEO]	520	67,548	14.2
15 Jun 2022 - 15 Jun 2022	KARYON	MADAM CHUA LING LEE [SSH]	520	67,548	14.2
15 Jun 2022 - 15 Jun 2022					

Notice Period is 12 June 2022 - 18 June 2022

Effective Change Date	Stock Name	Buyer/ Seller Name [Classification]	Bought / (Sold) ['000]	No. of Shares After Trade ['000]	
			Total	Total	% Held
09 Jun 2022 - 09 Jun 2022	LKL	MR ANG KIAN YOU [SSH]	1,000	53,818	5.539
14 Jun 2022 - 14 Jun 2022	LUXCHEM	MADAM CHIN SONG MOOI [DIR/CEO]	101	454,709	42.506
14 Jun 2022 - 14 Jun 2022	LUXCHEM	MR TANG YING SEE [DIR/CEO]	101	454,709	42.505
14 Jun 2022 - 14 Jun 2022	LUXCHEM	MR TANG YING SEE [SSH]	101	439,494	41.083
14 Jun 2022 - 14 Jun 2022	LUXCHEM	MADAM CHIN SONG MOOI [SSH]	101	439,494	41.083
10 Jun 2022 - 10 Jun 2022	MAGNI	MR TAN POAY SENG [DIR/CEO]	87	105,888	24.43
09 Jun 2022 - 09 Jun 2022	MALAKOF	EMPLOYEES PROVIDENT FUND BOARD [SSH]	-1,956	499,643	10.224
08 Jun 2022 - 08 Jun 2022	MALAKOF	EMPLOYEES PROVIDENT FUND BOARD [SSH]	-614	501,599	10.264
13 Jun 2022 - 14 Jun 2022	MALPAC	MR KAN AH CHUN [DIR/CEO]	19	2,428	3.238
15 Jun 2022 - 16 Jun 2022	MATANG	MR ANG KIAN YOU [SSH]	1,729	180,216	8.297
10 Jun 2022 - 10 Jun 2022	MATANG	MR ANG KIAN YOU [SSH]	2,516	178,486	8.218
14 Jun 2022 - 14 Jun 2022	MATRIX	EMPLOYEES PROVIDENT FUND BOARD [SSH]	-50	70,782	8.485
10 Jun 2022 - 10 Jun 2022	MATRIX	EMPLOYEES PROVIDENT FUND BOARD [SSH]	-90	70,832	8.491
09 Jun 2022 - 09 Jun 2022	MATRIX	EMPLOYEES PROVIDENT FUND BOARD [SSH]	-312	71,102	8.523
08 Jun 2022 - 08 Jun 2022	MATRIX	EMPLOYEES PROVIDENT FUND BOARD [SSH]	-265	71,414	8.56
14 Jun 2022 - 14 Jun 2022	MAXIS	EMPLOYEES PROVIDENT FUND BOARD (EPF BOARD) [SSH]	-500	936,261	11.963
13 Jun 2022 - 13 Jun 2022	MAXIS	EMPLOYEES PROVIDENT FUND BOARD (EPF BOARD) [SSH]	-179	936,761	11.969
10 Jun 2022 - 10 Jun 2022	MAXIS	EMPLOYEES PROVIDENT FUND BOARD (EPF BOARD) [SSH]	-967	936,940	11.972
09 Jun 2022 - 09 Jun 2022	MAXIS	EMPLOYEES PROVIDENT FUND BOARD (EPF BOARD) [SSH]	-77	937,907	11.984
08 Jun 2022 - 08 Jun 2022	MAXIS	EMPLOYEES PROVIDENT FUND BOARD (EPF BOARD) [SSH]	-44	937,984	11.985
15 Jun 2022 - 15 Jun 2022	MAYBANK	YAYASAN PELABURAN BUMIPUTRA (YPB) [SSH]	-1,546	840,078	7.018
15 Jun 2022 - 15 Jun 2022	MAYBANK	PERMODALAN NASIONAL BERHAD [SSH]	-1,546	840,078	7.018
14 Jun 2022 - 14 Jun 2022	MAYBANK	EMPLOYEES PROVIDENT FUND BOARD [SSH]	1,516	1,661,646	13.882
14 Jun 2022 - 14 Jun 2022	MAYBANK	PERMODALAN NASIONAL BERHAD [SSH]	-2,964	841,624	7.031
14 Jun 2022 - 14 Jun 2022	MAYBANK	YAYASAN PELABURAN BUMIPUTRA (YPB) [SSH]	-2,964	841,624	7.031
13 Jun 2022 - 13 Jun 2022	MAYBANK	EMPLOYEES PROVIDENT FUND BOARD [SSH]	3,000	1,660,130	13.869
10 Jun 2022 - 10 Jun 2022	MAYBANK	EMPLOYEES PROVIDENT FUND BOARD [SSH]	1,500	1,657,130	13.844
09 Jun 2022 - 09 Jun 2022	MAYBANK	EMPLOYEES PROVIDENT FUND BOARD [SSH]	1,000	1,655,630	13.831
08 Jun 2022 - 08 Jun 2022	MAYBANK	EMPLOYEES PROVIDENT FUND BOARD [SSH]	420	1,654,630	13.823
15 Jun 2022 - 15 Jun 2022	MBMR	LEMBAGA TABUNG HAJI [SSH]	-31	20,264	5.184
14 Jun 2022 - 14 Jun 2022	MBMR	EMPLOYEES PROVIDENT FUND BOARD [SSH]	150	38,466	9.841
13 Jun 2022 - 13 Jun 2022	MBMR	EMPLOYEES PROVIDENT FUND BOARD [SSH]	112	38,316	9.802
10 Jun 2022 - 10 Jun 2022	MBMR	EMPLOYEES PROVIDENT FUND BOARD [SSH]	400	38,203	9.773
09 Jun 2022 - 09 Jun 2022	MHB	CITIGROUP NOMINEES (TEMPATAN) SDN BHD URUSHARTA JAMAAH SDN BHD (1)-IC [SSH]	882	83,817	5.239
15 Jun 2022 - 15 Jun 2022	MICROLN	DATO' SERI MOHD KHAIRI BIN MAT JAHYA [SSH]	200	64,560	6.043
15 Jun 2022 - 15 Jun 2022	MICROLN	DATO' SERI MOHD KHAIRI BIN DATO' MAT JAHYA [DIR/CEO]	200	64,560	6.043
15 Jun 2022 - 16 Jun 2022	MICROLN	MR MONTEIRO GERARD CLAIR [DIR/CEO]	1,224	30,562	2.861
13 Jun 2022 - 14 Jun 2022	MICROLN	MR MONTEIRO GERARD CLAIR [DIR/CEO]	882	29,338	2.746
09 Jun 2022 - 09 Jun 2022	MICROLN	RHB TRUSTEES BERHAD [SSH]	61,000	61,000	5.71
15 Jun 2022 - 15 Jun 2022	MIKROMB	MR LOW KHEK HENG @ LOW CHOON HUAT [SSH]	200	104,608	17.753
14 Jun 2022 - 14 Jun 2022	MISC	EMPLOYEES PROVIDENT FUND BOARD [SSH]	81	562,941	12.61
15 Jun 2022 - 15 Jun 2022	MISC	KUMPULAN WANG PERSARAAN (DIPERBADANKAN) (KWAP) [SSH]	80	233,780	5.24
13 Jun 2022 - 13 Jun 2022	MISC	EMPLOYEES PROVIDENT FUND BOARD [SSH]	1,112	562,860	12.61
10 Jun 2022 - 10 Jun 2022	MISC	EMPLOYEES PROVIDENT FUND BOARD [SSH]	1,000	561,749	12.58
13 Jun 2022 - 13 Jun 2022	MISC	KUMPULAN WANG PERSARAAN (DIPERBADANKAN) (KWAP) [SSH]	500	233,700	5.23
09 Jun 2022 - 09 Jun 2022	MISC	EMPLOYEES PROVIDENT FUND BOARD [SSH]	1,000	560,749	12.56
08 Jun 2022 - 08 Jun 2022	MISC	EMPLOYEES PROVIDENT FUND BOARD [SSH]	174	559,749	12.54
17 Jun 2022 - 17 Jun 2022	MRDIY	MR TAN YU YEH [DIR/CEO]	300	3,192,986	50.808
17 Jun 2022 - 17 Jun 2022	MRDIY	MR TAN YU YEH [SSH]	300	3,192,986	50.808
16 Jun 2022 - 16 Jun 2022	MRDIY	MR TAN YU YEH [SSH]	200	3,192,686	50.804
16 Jun 2022 - 16 Jun 2022	MRDIY	MR TAN YU YEH [DIR/CEO]	200	3,192,686	50.804
13 Jun 2022 - 16 Jun 2022	MSNIAGA	SHAPADU CAPITAL SDN. BHD. [SSH]	21	16,123	26.69
14 Jun 2022 - 14 Jun 2022	MYEG	EMPLOYEES PROVIDENT FUND BOARD [SSH]	2,000	411,859	5.577
13 Jun 2022 - 13 Jun 2022	MYEG	EMPLOYEES PROVIDENT FUND BOARD [SSH]	1,621	410,334	5.556
10 Jun 2022 - 10 Jun 2022	MYEG	EMPLOYEES PROVIDENT FUND BOARD [SSH]	785	408,713	5.534
09 Jun 2022 - 09 Jun 2022	MYEG	EMPLOYEES PROVIDENT FUND BOARD [SSH]	1,756	407,928	5.523
13 Jun 2022 - 13 Jun 2022	MYNEWS	EMPLOYEES PROVIDENT FUND BOARD [SSH]	-65	40,752	5.974
10 Jun 2022 - 10 Jun 2022	MYNEWS	EMPLOYEES PROVIDENT FUND BOARD [SSH]	-398	40,818	5.984
09 Jun 2022 - 09 Jun 2022	MYNEWS	EMPLOYEES PROVIDENT FUND BOARD [SSH]	-35	41,216	6.042
13 Jun 2022 - 13 Jun 2022	NESTLE	EMPLOYEES PROVIDENT FUND BOARD [SSH]	24	21,948	9.36
10 Jun 2022 - 10 Jun 2022	NESTLE	EMPLOYEES PROVIDENT FUND BOARD [SSH]	18	21,924	9.349
09 Jun 2022 - 09 Jun 2022	NESTLE	EMPLOYEES PROVIDENT FUND BOARD [SSH]	23	21,906	9.342
08 Jun 2022 - 08 Jun 2022	NESTLE	EMPLOYEES PROVIDENT FUND BOARD [SSH]	4	21,840	9.314
13 Jun 2022 - 13 Jun 2022	NGGB	DATO' GAN KONG HIOK [SSH]	50	151,836	19.722
09 Jun 2022 - 13 Jun 2022	NGGB	LING SIEW LUAN [SSH]	81	44,808	5.82
14 Jun 2022 - 15 Jun 2022	NIHSIN	MISS KHOO WUAN RU [DIR/CEO]	412	94,436	17.819
13 Jun 2022 - 14 Jun 2022	NIHSIN	MISS NG SHWU CHING [DIR/CEO]	1,000	4,217	0.796
14 Jun 2022 - 15 Jun 2022	NOTION	MR CHOO WING HONG [SSH]	762	37,469	7.266
14 Jun 2022 - 15 Jun 2022	NOTION	MR CHOO WING HONG [DIR/CEO]	762	37,469	7.266
10 Jun 2022 - 13 Jun 2022	NOTION	MR CHOO WING HONG [SSH]	770	36,706	7.118
10 Jun 2022 - 13 Jun 2022	NOTION	MR CHOO WING HONG [DIR/CEO]	770	36,706	7.118
15 Jun 2022 - 17 Jun 2022	NOVAMSC	MR OOI KENG THYE [SSH]	2,677	125,876	10.752
13 Jun 2022 - 14 Jun 2022	NOVAMSC	MR OOI KENG THYE [SSH]	5,293	123,199	10.523
16 Jun 2022 - 16 Jun 2022	OCK	MR OOI CHIN KHOON [SSH]	507	363,107	34.434
16 Jun 2022 - 16 Jun 2022	OCK	MR OOI CHIN KHOON [DIR/CEO]	507	363,107	34.434
16 Jun 2022 - 16 Jun 2022	OCK	ALIRAN ARMADA SDN BHD [SSH]	507	361,642	34.295
14 Jun 2022 - 14 Jun 2022	OCK	EMPLOYEES PROVIDENT FUND BOARD [SSH]	-616	76,309	7.236
13 Jun 2022 - 15 Jun 2022	OCK	MR OOI CHIN KHOON [SSH]	1,975	362,600	34.386
13 Jun 2022 - 15 Jun 2022	OCK	MR OOI CHIN KHOON [DIR/CEO]	1,975	362,600	34.386
13 Jun 2022 - 15 Jun 2022	OCK	ALIRAN ARMADA SDN BHD [SSH]	1,975	361,135	34.247
13 Jun 2022 - 13 Jun 2022	OCK	EMPLOYEES PROVIDENT FUND BOARD [SSH]	-500	76,295	7.295
10 Jun 2022 - 10 Jun 2022	OCK	EMPLOYEES PROVIDENT FUND BOARD [SSH]	-661	77,425	7.342
09 Jun 2022 - 09 Jun 2022	OCK	EMPLOYEES PROVIDENT FUND BOARD [SSH]	-300	78,085	7.405
08 Jun 2022 - 08 Jun 2022	OCK	EMPLOYEES PROVIDENT FUND BOARD [SSH]	-20	78,385	7.433
15 Jun 2022 - 15 Jun 2022	OMESTI	YAM TUNKU ZAIN AL-ABIDIN IBNI TUANKU MUHRIZ [DIR/CEO]	1,200	1,200	0.225
16 Jun 2022 - 16 Jun 2022	PADINI	KUMPULAN WANG PERSARAAN (DIPERBADANKAN) [SSH]	-50	47,062	7.153
15 Jun 2022 - 15 Jun 2022	PADINI	KUMPULAN WANG PERSARAAN (DIPERBADANKAN) [SSH]	-300	47,112	7.161
08 Jun 2022 - 08 Jun 2022	PADINI	EMPLOYEES PROVIDENT FUND BOARD [SSH]	-24	36,581	5.56

Notice Period is 12 June 2022 - 18 June 2022

Effective Change Date	Stock Name	Buyer/ Seller Name [Classification]	Bought / (Sold) ['000]	No. of Shares After Trade ['000]	
			Total	Total	% Held
16 Jun 2022 - 16 Jun 2022	PANTECH	MR TAN ANG ANG [DIR/CEO]	159	16,349	1.99
13 Jun 2022 - 13 Jun 2022	PANTECH	DATO' CHEW TING LENG [SSH]	300	153,926	18.721
13 Jun 2022 - 13 Jun 2022	PANTECH	DATO' CHEW TING LENG [DIR/CEO]	300	153,926	18.721
13 Jun 2022 - 13 Jun 2022	PANTECH	DATIN SHUM KAH LIN [SSH]	300	153,926	18.721
10 Jun 2022 - 13 Jun 2022	PANTECH	MR TAN ANG ANG [DIR/CEO]	200	16,190	1.969
14 Jun 2022 - 14 Jun 2022	PARAMON	MR CHEW SUN TEONG [DIR/CEO]	10	10,138	1.63
14 Jun 2022 - 14 Jun 2022	PBBANK	EMPLOYEES PROVIDENT FUND BOARD [SSH]	3,000	2,955,662	15.23
13 Jun 2022 - 13 Jun 2022	PBBANK	EMPLOYEES PROVIDENT FUND BOARD [SSH]	5,944	2,952,662	15.21
10 Jun 2022 - 10 Jun 2022	PBBANK	EMPLOYEES PROVIDENT FUND BOARD [SSH]	2,997	2,946,718	15.18
09 Jun 2022 - 09 Jun 2022	PBBANK	EMPLOYEES PROVIDENT FUND BOARD [SSH]	2,544	2,943,721	15.17
08 Jun 2022 - 08 Jun 2022	PBBANK	EMPLOYEES PROVIDENT FUND BOARD [SSH]	36	2,941,177	15.15
14 Jun 2022 - 16 Jun 2022	PCCS	MR CHAN CHOO SING [DIR/CEO]	578	102,047	48.013
14 Jun 2022 - 16 Jun 2022	PCCS	MADAM TAN KWEE KEE [SSH]	578	102,047	48.013
14 Jun 2022 - 16 Jun 2022	PCCS	MR CHAN CHOO SING [SSH]	578	102,047	48.013
14 Jun 2022 - 16 Jun 2022	PCCS	MR CHAN WEE KIANG [DIR/CEO]	578	94,260	44.35
14 Jun 2022 - 16 Jun 2022	PCCS	MR CHAN WEE KIANG [SSH]	578	94,260	44.35
14 Jun 2022 - 16 Jun 2022	PCCS	CCS CAPITAL SDN. BHD. [SSH]	578	92,049	43.309
13 Jun 2022 - 13 Jun 2022	PCHEM	EMPLOYEES PROVIDENT FUND BOARD (EPF BOARD) [SSH]	2,735	609,723	7.622
10 Jun 2022 - 10 Jun 2022	PCHEM	EMPLOYEES PROVIDENT FUND BOARD (EPF BOARD) [SSH]	1,074	606,988	7.587
09 Jun 2022 - 09 Jun 2022	PCHEM	EMPLOYEES PROVIDENT FUND BOARD (EPF BOARD) [SSH]	2,928	605,914	7.574
08 Jun 2022 - 08 Jun 2022	PCHEM	EMPLOYEES PROVIDENT FUND BOARD (EPF BOARD) [SSH]	3,227	602,987	7.537
16 Jun 2022 - 16 Jun 2022	PESTECH	MR LIM PAY CHUAN [DIR/CEO]	160	191,001	19.4
16 Jun 2022 - 16 Jun 2022	PESTECH	MR LIM PAY CHUAN [SSH]	160	191,001	19.4
13 Jun 2022 - 13 Jun 2022	PETGAS	EMPLOYEES PROVIDENT FUND BOARD [SSH]	43	276,963	13.997
10 Jun 2022 - 10 Jun 2022	PETGAS	EMPLOYEES PROVIDENT FUND BOARD [SSH]	151	276,920	13.995
09 Jun 2022 - 09 Jun 2022	PETGAS	EMPLOYEES PROVIDENT FUND BOARD [SSH]	223	276,769	13.987
15 Jun 2022 - 15 Jun 2022	PMETAL	MR KOON POH WENG [DIR/CEO]	176	510,977	6.202
15 Jun 2022 - 15 Jun 2022	PMETAL	MR KOON POH WENG [SSH]	176	510,977	6.202
15 Jun 2022 - 15 Jun 2022	PMETAL	MADAM CHAN POH CHOO [SSH]	176	510,977	6.201
13 Jun 2022 - 13 Jun 2022	PMETAL	MR KOON POH WENG [SSH]	500	510,801	6.2
13 Jun 2022 - 13 Jun 2022	PMETAL	MADAM CHAN POH CHOO [SSH]	500	510,801	6.199
13 Jun 2022 - 13 Jun 2022	PMETAL	MR KOON POH WENG [DIR/CEO]	500	510,801	6.2
14 Jun 2022 - 14 Jun 2022	PPB	EMPLOYEES PROVIDENT FUND BOARD [SSH]	372	160,999	11.317
13 Jun 2022 - 13 Jun 2022	PPB	EMPLOYEES PROVIDENT FUND BOARD [SSH]	125	160,627	11.291
10 Jun 2022 - 10 Jun 2022	PPB	EMPLOYEES PROVIDENT FUND BOARD [SSH]	76	160,501	11.282
09 Jun 2022 - 09 Jun 2022	PPB	EMPLOYEES PROVIDENT FUND BOARD [SSH]	117	160,454	11.279
08 Jun 2022 - 08 Jun 2022	PPB	EMPLOYEES PROVIDENT FUND BOARD [SSH]	23	160,336	11.271
17 Jun 2022 - 17 Jun 2022	PTRANS	DATO' SRI CHEONG KONG FITT [SSH]	1,010	205,068	29.371
17 Jun 2022 - 17 Jun 2022	PTRANS	DATIN SRI LIM SOW KENG [SSH]	1,010	205,068	29.371
17 Jun 2022 - 17 Jun 2022	PTRANS	DATO' SRI CHEONG KONG FITT [DIR/CEO]	1,010	205,068	29.371
15 Jun 2022 - 15 Jun 2022	PTRANS	DATIN SRI LIM SOW KENG [SSH]	350	204,058	29.226
15 Jun 2022 - 15 Jun 2022	PTRANS	DATO' SRI CHEONG KONG FITT [SSH]	350	204,058	29.226
15 Jun 2022 - 15 Jun 2022	PTRANS	DATO' SRI CHEONG KONG FITT [DIR/CEO]	350	204,058	29.226
17 Jun 2022 - 17 Jun 2022	PWROOT	MR WONG TAK KEONG [SSH]	250	40,590	9.75
17 Jun 2022 - 17 Jun 2022	PWROOT	MR WONG TAK KEONG [DIR/CEO]	250	40,590	9.75
17 Jun 2022 - 17 Jun 2022	PWROOT	MR WONG TAK KEONG [DIR/CEO]	36	9,482	19.531
17 Jun 2022 - 17 Jun 2022	PWROOT	MR WONG TAK KEONG [SSH]	36	9,482	19.531
16 Jun 2022 - 16 Jun 2022	PWROOT	MR WONG TAK KEONG [DIR/CEO]	191	9,446	19.456
16 Jun 2022 - 16 Jun 2022	PWROOT	MR WONG TAK KEONG [SSH]	191	9,446	19.456
15 Jun 2022 - 15 Jun 2022	PWROOT	MR WONG TAK KEONG [DIR/CEO]	88	9,255	19.063
15 Jun 2022 - 15 Jun 2022	PWROOT	MR WONG TAK KEONG [SSH]	88	9,255	19.063
14 Jun 2022 - 14 Jun 2022	PWROOT	MR WONG TAK KEONG [SSH]	60	9,166	18.881
14 Jun 2022 - 14 Jun 2022	PWROOT	MR WONG TAK KEONG [DIR/CEO]	60	9,166	18.881
13 Jun 2022 - 13 Jun 2022	PWROOT	MR WONG TAK KEONG [DIR/CEO]	71	9,106	18.757
13 Jun 2022 - 13 Jun 2022	PWROOT	MR WONG TAK KEONG [SSH]	71	9,106	18.757
14 Jun 2022 - 14 Jun 2022	QL	EMPLOYEES PROVIDENT FUND BOARD [SSH]	73	165,100	6.784
13 Jun 2022 - 13 Jun 2022	QL</				

Notice Period is 12 June 2022 - 18 June 2022

Effective Change Date	Stock Name	Buyer/ Seller Name [Classification]	Bought / (Sold) ['000]	No. of Shares After Trade ['000]	
			Total	Total	% Held
13 Jun 2022 - 13 Jun 2022	SAMAIDEN	MR FONG YENG FOON [SSH]	52,501	218,023	56.628
13 Jun 2022 - 13 Jun 2022	SAMAIDEN-WA	IR CHOW PUI HEE [DIR/CEO]	11,168	88,495	50.571
13 Jun 2022 - 13 Jun 2022	SAMAIDEN-WA	MR FONG YENG FOON [DIR/CEO]	24,230	88,495	50.571
15 Jun 2022 - 15 Jun 2022	SAPIND	MR KOH KOK HOOI [SSH]	31	4,743	6.517
14 Jun 2022 - 14 Jun 2022	SAPIND	MR KOH KOK HOOI [SSH]	14	4,712	6.474
13 Jun 2022 - 13 Jun 2022	SAPIND	MR KOH KOK HOOI [SSH]	13	4,698	6.455
10 Jun 2022 - 10 Jun 2022	SAPIND	MR KOH KOK HOOI [SSH]	35	4,685	6.437
15 Jun 2022 - 15 Jun 2022	SCGM	DATO' SRI LEE HOCK GUAN [SSH]	-100	40,108	20.829
10 Jun 2022 - 10 Jun 2022	SCGM	DATO' SRI LEE HOCK GUAN [SSH]	-230	40,208	20.881
14 Jun 2022 - 15 Jun 2022	SCIENTX	MR LIM PENG JIN [DIR/CEO]	434	878,878	56.665
14 Jun 2022 - 15 Jun 2022	SCIENTX	MR LIM PENG JIN [SSH]	434	878,786	56.659
14 Jun 2022 - 15 Jun 2022	SCIENTX	MR LIM PENG CHEONG [DIR/CEO]	434	832,364	53.666
14 Jun 2022 - 15 Jun 2022	SCIENTX	MR LIM PENG CHEONG [SSH]	434	825,156	53.202
14 Jun 2022 - 15 Jun 2022	SCIENTX	SCIENTEX INFINITY SDN BHD [SSH]	434	694,767	44.795
14 Jun 2022 - 14 Jun 2022	SCIENTX	MR ANG KIM SWEET [DIR/CEO]	30	710	0.046
16 Jun 2022 - 16 Jun 2022	SEDANIA	DATUK NOOR AZRIN BIN MOHD NOOR [SSH]	500	124,226	35.781
16 Jun 2022 - 16 Jun 2022	SEDANIA	DATUK NOOR AZRIN BIN MOHD NOOR [DIR/CEO]	500	124,226	35.781
16 Jun 2022 - 16 Jun 2022	SEDANIA	SEDANIA CORPORATION SDN. BHD. [SSH]	500	108,583	31.275
10 Jun 2022 - 10 Jun 2022	SEM	TAN SRI DATO' SERI VINCENT TAN CHEE YIOUEN [SSH]	60	505,248	44.858
13 Jun 2022 - 13 Jun 2022	SIME	EMPLOYEES PROVIDENT FUND BOARD [SSH]	1,510	611,379	8.978
10 Jun 2022 - 10 Jun 2022	SIME	EMPLOYEES PROVIDENT FUND BOARD [SSH]	573	609,869	8.956
09 Jun 2022 - 09 Jun 2022	SIME	EMPLOYEES PROVIDENT FUND BOARD [SSH]	2,419	609,295	8.947
14 Jun 2022 - 14 Jun 2022	SIMEPLT	KUMPULAN WANG PERSARAAN (DIPERBADANKAN) [SSH]	44	449,726	6.503
13 Jun 2022 - 13 Jun 2022	SIMEPLT	KUMPULAN WANG PERSARAAN (DIPERBADANKAN) [SSH]	910	449,681	6.502
10 Jun 2022 - 10 Jun 2022	SIMEPLT	EMPLOYEES PROVIDENT FUND BOARD [SSH]	26	933,446	13.497
09 Jun 2022 - 09 Jun 2022	SIMEPLT	EMPLOYEES PROVIDENT FUND BOARD [SSH]	39	933,420	13.497
13 Jun 2022 - 13 Jun 2022	SINARAN	MITSUBISHI UFJ FINANCIAL GROUP INC [SSH]	0.001	60,799	6.644
13 Jun 2022 - 13 Jun 2022	SINARAN	MORGAN STANLEY [SSH]	0.001	60,799	6.644
09 Jun 2022 - 09 Jun 2022	SINARAN	MITSUBISHI UFJ FINANCIAL GROUP INC [SSH]	-0.001	60,799	6.644
09 Jun 2022 - 09 Jun 2022	SINARAN	MORGAN STANLEY [SSH]	-0.001	60,799	6.644
14 Jun 2022 - 14 Jun 2022	SKPRES	EMPLOYEES PROVIDENT FUND BOARD [SSH]	210	81,878	5.241
13 Jun 2022 - 13 Jun 2022	SKPRES	EMPLOYEES PROVIDENT FUND BOARD [SSH]	170	81,668	5.227
10 Jun 2022 - 10 Jun 2022	SKPRES	EMPLOYEES PROVIDENT FUND BOARD [SSH]	288	81,498	5.216
09 Jun 2022 - 09 Jun 2022	SKPRES	EMPLOYEES PROVIDENT FUND BOARD [SSH]	930	81,210	5.198
08 Jun 2022 - 08 Jun 2022	SKPRES	EMPLOYEES PROVIDENT FUND BOARD [SSH]	206	80,280	5.138
10 Jun 2022 - 10 Jun 2022	SNC	DATIN' SRI CHU KIM GUEK [SSH]	1,916	17,471	7.54
10 Jun 2022 - 10 Jun 2022	SNC	EMILY SOW MEI CHET [SSH]	1,916	17,471	7.54
10 Jun 2022 - 10 Jun 2022	SNC	ERIC SOW YONG SHING [SSH]	1,916	17,471	7.539
10 Jun 2022 - 10 Jun 2022	SNC	EDWARD SOW YUEN SENG [SSH]	1,916	17,471	7.54
10 Jun 2022 - 10 Jun 2022	SNC	DATO' SRI (DR) SOW CHIN CHUAN [SSH]	1,916	17,471	7.54
10 Jun 2022 - 10 Jun 2022	SNC	EUGENE SOW CHUAN SHENG [SSH]	1,916	17,471	7.54
10 Jun 2022 - 10 Jun 2022	SNC	EDMUND SOW YONG MING [SSH]	1,916	17,471	7.539
15 Jun 2022 - 16 Jun 2022	SPRITZER	DATO' LIM A HENG @ LIM KOK CHEONG [DIR/CEO]	133	105,927	50.449
15 Jun 2022 - 16 Jun 2022	SPRITZER	DATIN CHUA SHOK TIM @ CHUA SIOK HOON [SSH]	133	105,927	50.449
15 Jun 2022 - 16 Jun 2022	SPRITZER	DATO' LIM A HENG @ LIM KOK CHEONG DPMP JSM JP [SSH]	133	105,927	50.449
15 Jun 2022 - 16 Jun 2022	SPRITZER	YEE LEE ORGANIZATION BHD. [SSH]	133	89,364	42.561
15 Jun 2022 - 16 Jun 2022	SPRITZER	YOUNG WEI HOLDINGS SDN. BHD. [SSH]	133	89,364	42.561
15 Jun 2022 - 16 Jun 2022	SPRITZER	YELETA HOLDINGS SDN. BHD. [SSH]	133	89,364	42.561
15 Jun 2022 - 16 Jun 2022	SPRITZER	UNIVELEE SDN. BHD. [SSH]	133	89,364	42.561
15 Jun 2022 - 16 Jun 2022	SPRITZER	UNIKAMPAR CREDIT AND LEASING SDN. BHD. [SSH]	133	89,364	42.561
15 Jun 2022 - 16 Jun 2022	SPRITZER	YEE LEE CORPORATION BHD. [SSH]	133	66,552	31.696
15 Jun 2022 - 16 Jun 2022	SPRITZER	LANGIT MAKAMUR SDN. BHD. [SSH]	133	66,552	31.696
14 Jun 2022 - 14 Jun 2022	SPSETIA	EMPLOYEES PROVIDENT FUND BOARD [SSH]	3,000	240,354	5.908
13 Jun 2022 - 13 Jun 2022	SPSETIA	EMPLOYEES PROVIDENT FUND BOARD [SSH]	926	238,050	5.852
09 Jun 2022 - 09 Jun 2022	SPTOTO	JUARA SEJATI SDN BHD [SSH]	5,000	570,112	42.565
13 Jun 2022 - 16 Jun 2022	STRAITS	ANG TUN YOUNG [SSH]	104	69,746	7.906
14 Jun 2022 - 14 Jun 2022	SUNREIT	EMPLOYEES PROVIDENT FUND BOARD [SSH]	137	521,290	15.22
09 Jun 2022 - 09 Jun 2022	SUNREIT	EMPLOYEES PROVIDENT FUND BOARD [SSH]	-1,205	521,153	15.22
08 Jun 2022 - 08 Jun 2022	SUNREIT	EMPLOYEES PROVIDENT FUND BOARD [SSH]	-356	522,081	15.24
14 Jun 2022 - 14 Jun 2022	SUNWAY	EMPLOYEES PROVIDENT FUND BOARD [SSH]	-94	409,577	8.38
13 Jun 2022 - 13 Jun 2022	SUNWAY	EMPLOYEES PROVIDENT FUND BOARD [SSH]	-12	409,671	8.38
14 Jun 2022 - 16 Jun 2022	SWIFT	MR LOO HOUI KEAT [DIR/CEO]	270	341,602	38.39
14 Jun 2022 - 16 Jun 2022	SWIFT	MR LOO HOUI KEAT [SSH]	270	341,602	38.39
09 Jun 2022 - 13 Jun 2022	SWIFT	MR LOO HOUI KEAT [SSH]	297	341,332	38.36
09 Jun 2022 - 13 Jun 2022	SWIFT	MR LOO HOUI KEAT [DIR/CEO]	297	341,332	38.36
10 Jun 2022 - 10 Jun 2022	SWKPLNT	DATO WONG KUO HEA [SSH]	-60	87,184	31.246
10 Jun 2022 - 10 Jun 2022	SWKPLNT	DATO WONG KUO HEA [DIR/CEO]	-60	87,184	31.246
10 Jun 2022 - 10 Jun 2022	SWKPLNT	DATUK ABDUL HAMED BIN SEPAWI [SSH]	-60	82,109	29.427
10 Jun 2022 - 10 Jun 2022	SWKPLNT	DATUK ABDUL HAMED BIN SEPAWI [DIR/CEO]	-60	82,109	29.427
10 Jun 2022 - 10 Jun 2022	SWKPLNT	MOUNTEX SDN. BHD. [SSH]	-60	81,908	29.354
10 Jun 2022 - 10 Jun 2022	SWKPLNT	TA ANN HOLDINGS BERHAD [SSH]	-60	81,908	29.354
16 Jun 2022 - 16 Jun 2022	TAANN	DATUK AMAR ABDUL HAMED BIN HAJI SEPAWI [SSH]	40	149,672	33.98
16 Jun 2022 - 16 Jun 2022	TAANN	DATUK AMAR ABDUL HAMED BIN HAJI SEPAWI [DIR/CEO]	40	149,672	33.98
15 Jun 2022 - 15 Jun 2022	TAANN	DATUK AMAR ABDUL HAMED BIN HAJI SEPAWI [SSH]	33	149,632	33.971
15 Jun 2022 - 15 Jun 2022	TAANN	DATUK AMAR ABDUL HAMED BIN HAJI SEPAWI [DIR/CEO]	33	149,632	33.971
14 Jun 2022 - 14 Jun 2022	TAANN	DATUK AMAR ABDUL HAMED BIN HAJI SEPAWI [SSH]	32	149,599	33.964
14 Jun 2022 - 14 Jun 2022	TAANN	DATUK AMAR ABDUL HAMED BIN HAJI SEPAWI [DIR/CEO]	32	149,599	33.964
13 Jun 2022 - 13 Jun 2022	TAANN	DATUK AMAR ABDUL HAMED BIN HAJI SEPAWI [SSH]	80	149,567	33.957
13 Jun 2022 - 13 Jun 2022	TAANN	DATUK AMAR ABDUL HAMED BIN HAJI SEPAWI [DIR/CEO]	80	149,567	33.957
10 Jun 2022 - 10 Jun 2022	TAANN	DATUK AMAR ABDUL HAMED BIN HAJI SEPAWI [DIR/CEO]	50	149,487	33.938
10 Jun 2022 - 10 Jun 2022	TAANN	DATUK AMAR ABDUL HAMED BIN HAJI SEPAWI [SSH]	50	149,487	33.938
14 Jun 2022 - 14 Jun 2022	TAKAFUL	EMPLOYEES PROVIDENT FUND BOARD [SSH]	23	91,579	10.937
13 Jun 2022 - 13 Jun 2022	TAKAFUL	EMPLOYEES PROVIDENT FUND BOARD [SSH]	369	91,556	10.935
10 Jun 2022 - 10 Jun 2022	TAKAFUL	EMPLOYEES PROVIDENT FUND BOARD [SSH]	50	91,187	10.89
09 Jun 2022 - 09 Jun 2022	TAKAFUL	EMPLOYEES PROVIDENT FUND BOARD [SSH]	75	91,137	10.885
10 Jun 2022 - 10 Jun 2022	TALIWRK	LEMBAGA TABUNG HAJI [SSH]	-211	157,699	7.823
08 Jun 2022 - 08 Jun 2022	TALIWRK	LEMBAGA TABUNG HAJI [SSH]	-81	157,911	7.833
14 Jun 2022 - 14 Jun 2022	TENAGA	EMPLOYEES PROVIDENT FUND BOARD [SSH]	-615	914,523	15.97

Notice Period is 12 June 2022 - 18 June 2022

Effective Change Date	Stock Name	Buyer/ Seller Name [Classification]	Bought / (Sold) ['000]	No. of Shares After Trade ['000]	
			Total	Total	% Held
13 Jun 2022 - 13 Jun 2022	TENAGA	EMPLOYEES PROVIDENT FUND BOARD [SSH]	-800	915,372	15.99
10 Jun 2022 - 10 Jun 2022	TENAGA	EMPLOYEES PROVIDENT FUND BOARD [SSH]	-547	916,172	16
09 Jun 2022 - 09 Jun 2022	TENAGA	EMPLOYEES PROVIDENT FUND BOARD [SSH]	-691	916,719	16.01
08 Jun 2022 - 08 Jun 2022	TENAGA	EMPLOYEES PROVIDENT FUND BOARD [SSH]	-300	917,410	16.02
16 Jun 2022 - 16 Jun 2022	TGUAN	DATUK ANG POON SEONG [DIR/CEO]	343	4,274	1.109
10 Jun 2022 - 13 Jun 2022	TGUAN	DATO' ANG POON CHUAN [DIR/CEO]	20	3,239	0.841
16 Jun 2022 - 16 Jun 2022	TIMECOM	KUMPULAN WANG PERSARAAN (DIPERBADANKAN) ("KWAP") [SSH]	-7	93,658	5.13
14 Jun 2022 - 14 Jun 2022	TIMECOM	EMPLOYEES PROVIDENT FUND BOARD [SSH]	-237	199,927	10.951
15 Jun 2022 - 15 Jun 2022	TIMECOM	KUMPULAN WANG PERSARAAN (DIPERBADANKAN) ("KWAP") [SSH]	-5	93,665	5.13
14 Jun 2022 - 14 Jun 2022	TIMECOM	KUMPULAN WANG PERSARAAN (DIPERBADANKAN) ("KWAP") [SSH]	10	93,670	5.131
09 Jun 2022 - 09 Jun 2022	TIMECOM	EMPLOYEES PROVIDENT FUND BOARD [SSH]	15	200,164	10.964
08 Jun 2022 - 08 Jun 2022	TIMECOM	EMPLOYEES PROVIDENT FUND BOARD [SSH]	207	200,149	10.963
14 Jun 2022 - 14 Jun 2022	TM	EMPLOYEE PROVIDENT FUND BOARD (EPF BOARD) [SSH]	187	716,285	18.981
15 Jun 2022 - 15 Jun 2022	TM	KUMPULAN WANG PERSARAAN (DIPERBADANKAN) [SSH]	656	397,213	10.526
14 Jun 2022 - 14 Jun 2022	TM	KUMPULAN WANG PERSARAAN (DIPERBADANKAN) [SSH]	-166	396,556	10.508
13 Jun 2022 - 13 Jun 2022	TM	KUMPULAN WANG PERSARAAN (DIPERBADANKAN) [SSH]	555	396,722	10.513
10 Jun 2022 - 10 Jun 2022	TM	KUMPULAN WANG PERSARAAN (DIPERBADANKAN) [SSH]	-98	396,167	10.498
16 Jun 2022 - 16 Jun 2022	TOPGLOV	PUAN SRI TONG SIEW BEE [SSH]	1,200	2,883,735	36.015
16 Jun 2022 - 16 Jun 2022	TOPGLOV	TAN SRI DR LIM WEE CHAI [SSH]	1,200	2,883,735	36.015
16 Jun 2022 - 16 Jun 2022	TOPGLOV	TAN SRI DR LIM WEE CHAI [DIR/CEO]	1,200	2,883,735	36.015
16 Jun 2022 - 16 Jun 2022	TOPGLOV	MR LIM HOUI SIN [SSH]	1,200	2,883,535	36.012
16 Jun 2022 - 16 Jun 2022	TOPGLOV	MR LIM HOUI SIN [DIR/CEO]	1,200	2,883,535	36.012
16 Jun 2022 - 16 Jun 2022	TOPGLOV	MR LIM JIN FENG [SSH]	1,200	2,783,673	34.764
16 Jun 2022 - 16 Jun 2022	TOPGLOV	MISS SHARMILA SEKARAJASEKARAN [DIR/CEO]	536	21,774	0.272
16 Jun 2022 - 16 Jun 2022	TOPGLOV	DR NGO GET PING [DIR/CEO]	310	310	0.004
16 Jun 2022 - 16 Jun 2022	TOPGLOV	DATUK DR NORMA BINTI MANSOR [DIR/CEO]	10	43	0.001
10 Jun 2022 - 13 Jun 2022	TOPGLOV	TAN SRI DR LIM WEE CHAI [SSH]	2,500	2,882,535	36
10 Jun 2022 - 13 Jun 2022	TOPGLOV	PUAN SRI TONG SIEW BEE [SSH]	2,500	2,882,535	36
10 Jun 2022 - 13 Jun 2022	TOPGLOV	TAN SRI DR LIM WEE CHAI [DIR/CEO]	2,500	2,882,535	36
10 Jun 2022 - 13 Jun 2022	TOPGLOV	MR LIM HOUI SIN [SSH]	2,500	2,882,335	35.997
10 Jun 2022 - 13 Jun 2022	TOPGLOV	MR LIM HOUI SIN [DIR/CEO]	2,500	2,882,335	35.997
10 Jun 2022 - 13 Jun 2022	TOPGLOV	MR LIM JIN FENG [SSH]	2,500	2,782,473	34.749
09 Jun 2022 - 09 Jun 2022	TOYOVEN	ENCIK TUAN H.J. IR. YUSOFF BIN DAUD [DIR/CEO]	10	281	0.239
14 Jun 2022 - 15 Jun 2022	TRC	DATO RICHARD KHOO TENG SAN [DIR/CEO]	100	10,705	2.27
10 Jun 2022 - 10 Jun 2022	TRC	DATO RICHARD KHOO TENG SAN [DIR/CEO]	75	10,605	2.25
17 Jun 2022 - 17 Jun 2022	TSH	TAN AIK PEN [DIR/CEO]	500	272,149	19.718
16 Jun 2022 - 16 Jun 2022	TSH	TAN AIK PEN [SSH]	500	271,649	19.682
16 Jun 2022 - 16 Jun 2022	TSH	TAN AIK PEN [DIR/CEO]	500	271,649	19.682
15 Jun 2022 - 15 Jun 2022	TSH	TAN AIK PEN [SSH]	500	271,149	19.646
15 Jun 2022 - 15 Jun 2022	TSH	TAN AIK PEN [DIR/CEO]	500	271,149	19.646
14 Jun 2022 - 14 Jun 2022	TSH	TAN AIK PEN [SSH]	500	270,649	19.61
14 Jun 2022 - 14 Jun 2022	TSH	TAN AIK PEN [DIR/CEO]	500	270,649	19.61
13 Jun 2022 - 13 Jun 2022	TSH	TAN AIK PEN [SSH]	500	270,149	19.574
13 Jun 2022 - 13 Jun 2022	TSH	TAN AIK PEN [DIR/CEO]	500	270,149	19.574
10 Jun 2022 - 10 Jun 2022	TSH	TAN AIK PEN [SSH]	500	269,649	19.537
13 Jun 2022 - 14 Jun 2022	TWL	TWL CAPITAL BERHAD [SSH]	12,146	688,559	19.395
13 Jun 2022 - 14 Jun 2022	TWL	DATO' TAN WEI LIAN [DIR/CEO]	12,146	688,559	19.395
13 Jun 2022 - 14 Jun 2022	TWL	DATIN SEK CHIAN NEE [DIR/CEO]	12,146	688,559	19.395
13 Jun 2022 - 14 Jun 2022	TWL	DATIN SEK CHIAN NEE [SSH]	12,146	688,559	19.395
13 Jun 2022 - 14 Jun 2022	TWL	MISS TAN LEE CHIN [DIR/CEO]	12,146	688,559	19.395
13 Jun 2022 - 14 Jun 2022	TWL	MISS TAN LEE CHIN [SSH]	12,146	688,559	19.395
13 Jun 2022 - 14 Jun 2022	TWL	DATO' TAN WEI LIAN [SSH]	12,146	688,559	19.395
14 Jun 2022 - 14 Jun 2022	ULICORP	MR YEO SENG CHONG [SSH]	275	13,500	6.198
14 Jun 2022 - 14 Jun 2022	ULICORP	MADAM LIM MEE HWA [SSH]	275	13,500	6.199
14 Jun 2022 - 14 Jun 2022	ULICORP	YEOMAN CAPITAL MANAGEMENT PTE LTD [SSH]	275	11,475	5.268
1					

**axiata**

AXIATA GROUP BERHAD

On behalf of the Board, Maybank IB wishes to announce Axiata Group Berhad (**AXIATA**) and PT XL Axiata Tbk had completed the acquisition of the combined 66.03% equity interest in PT Link Net Tbk for approximately RM2.63 billion.

Post-completion of the acquisition, Axiata Investments (Indonesia) Sdn Bhd, an indirect wholly-owned subsidiary of Axiata, and XL Axiata hold 46.03% and 20.00% respectively from the combined 66.03% equity interest in Link Net2 previously held by Asia Link Dewa Pte. Ltd. and PT First Media Tbk. Axiata's total effective equity interest in Link Net held via Axiata Investments (Indonesia) Sdn Bhd and XL Axiata is 58.33% post completion of the acquisition.



DIGI.COM BERHAD

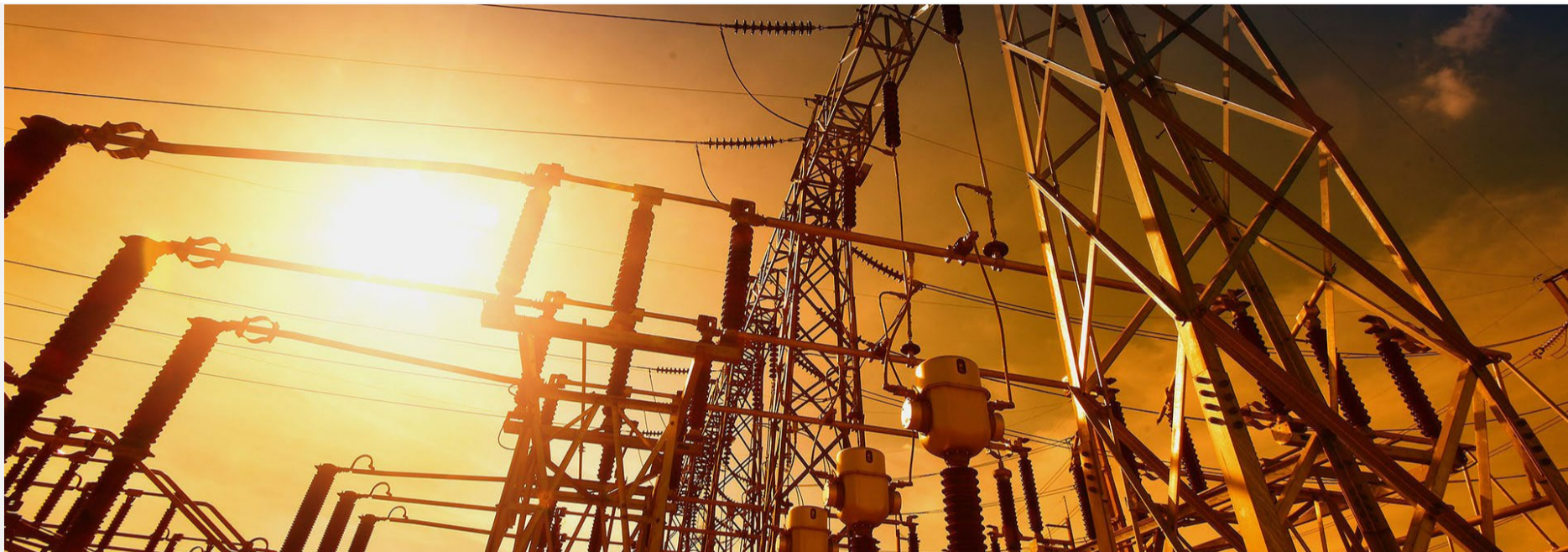
On behalf of the Board of Directors of Digi.Com Berhad (**DIGI**), CIMB Investment Bank Berhad wishes to notify that Digi and Axiata have agreed to extend the date by which the conditions precedent as set out in the Sale & Purchase Agreement are to be satisfied or waived in accordance with the terms and conditions of the SPA from 21 June 2022 to 31 December 2022 or such other date as mutually agreed in writing between the parties.

Save and except for the extension of the Long Stop Date, all other terms and conditions of the SPA remain unchanged.



GAMUDA BERHAD

Gamuda Berhad (**GAMUDA**) wishes to announce that the Coffs Harbour Bypass road construction project has been awarded by the Transport for New South Wales, the procurement entity for the New South Wales Government in Australia to a Joint Venture comprising the Company and Ferrovia Construction (Australia) Pty Ltd.



KEJURUTERAAN ASASTERA BERHAD

KEJURUTERAAN ASASTERA BERHAD

The Board of Kejuruteraan Asastera Berhad (**KAB**) wishes to announce that Sarawak Cable Berhad and KAB Energy Holdings Sdn Bhd, had mutually agreed to extend the deadline to execute definitive shares sale and purchase agreement in relation to the Proposed Acquisition to 30th June 2022.

mobilia MOBILIA HOLDINGS BERHAD

The Board of Directors of Mobilia Holdings Berhad (**MOBILIA**) wishes to announce that the Proposed Acquisition of the entire equity interest of H & S Usaha Jati Sdn Bhd for a cash consideration of RM9,247,720 has been completed today.



TITIJAYA LAND BERHAD

Titijaya Land Berhad (**TITIJYA**) made the announcement dated 15 June 2022 pertaining to the agreement to build-and-let entered into between Aman Duta Sdn. Bhd., an indirect wholly-owned subsidiary of Tititjaya Land Berhad, with DHL Properties (M) Sdn Bhd. The purpose of the Agreement is to set forth the terms and conditions in respect of the construction and letting of a logistics commercial complex to be constructed on a portion of the land measuring approximately 26,688 square meter situated at Lot 12174, No Hakmilik 4022, Mukim 12, Daerah Barat Daya, Pulau Pinang, in accordance with the agreed architectural design, layout and building specification agreed by DHL and approved by the appropriate authorities.



STEEL HAWK BERHAD

The Board of Directors of Steel Hawk Berhad (**SKHAWK**) is pleased to announce that Steel Hawk Engineering Sdn Bhd, a wholly-owned subsidiary of Steel Hawk Berhad, had on 20 June 2022 accepted the letter of award dated 17 June 2022 awarded by Sigma Water Engineering (M) Sdn Bhd in relation to provision of the Design, Supply, Manufacture and Delivery of Chemical Injection Skid for Effluent Management At Source Project at Malaysian Refining Company Sdn. Bhd. in Sungai Udang, Melaka.

	5th July 2022	ORGABIO HOLDINGS BERHAD (ACE MARKET)
	7th July 2022	SENG FONG HOLDINGS BERHAD (MAIN MARKET)
	13th July 2022	INFOLINE TEC GROUP BERHAD (ACE MARKET)
	18th July 2022	ECOSCIENCE INTERNATIONAL BERHAD (ACE MARKET)

Disclaimer: The information in the Investor Relations page is extracted from individual companies' announcements in www.bursamalaysia.com. The information on this page is provided as a service to readers. We assume no liability for damages resulting from or arising out of the use of such information. Whilst every effort is made to ensure accuracy, the information presented has been simplified for your reading pleasure. Readers are advised to read the original and complete filings on the Bursa Malaysia website at https://www.bursamalaysia.com/market_information/announcements/company_announcement

ShareInvestor is a technology based company with a focus on Internet media and we have operations in Malaysia, Singapore and Thailand.

We are the market leader in providing a combination of market data, analysis and news on various platforms to traders and investors.

Our websites include www.shareinvestor.com and www.bursastation.com.
More information about our products and services can be found at www.shareinvestorholdings.com

We're looking for Drupal Developers who will be in charge of front-end development and back-end/module development. This role requires expertise in PHP, HTML, CSS, JS, and an eye for design aesthetics. The candidates should be familiar and have a passion working with content management systems.

Interested candidates are encouraged to apply with full resume, present and expected salary and a recent photograph.

Please send these to hr.my@shareinvestor.com for processing. ShareInvestor regrets that only shortlisted candidates shall be notified.

Drupal Developers (2 vacancies)

Job Responsibilities:

- Active participation in all UI / UX decisions
- Contribute actively to the continuous development and maintenance of development projects
- Enhance Drupal development quality
- Provide solutions to issues and suggestions for improvements.
- Designing and implementing new features to the system
- Ensuring optimal performance

Required Skills:

- At least 3 years of Drupal Theming and Front-End Development experience
- Proficient in PHP, HTML5/XHTML, CSS, Javascript, jQuery, AJAX, XML, Json
- Good Diploma/Degree in Computer Science/Computer Engineering.
- Experience working with Drupal's main modules, such as CTools, Views, Rules, Webform, and so on
- Ability to create custom Drupal modules
- Strong troubleshooting skills to fix bugs

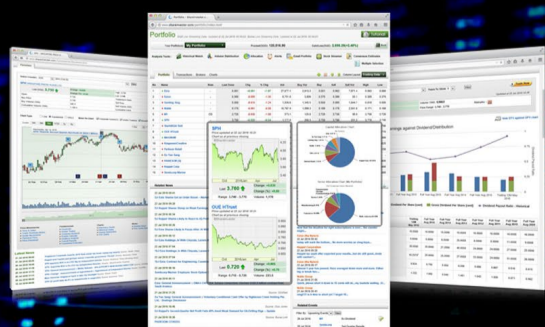
Benefits:

- Career & growth opportunities
- Interesting projects
- Medical Insurance
- Incentives

SHAREINVESTOR MARKET DATA PLATFORMS



**SHAREINVESTOR
STATION**
Advanced Charting Software
(8 Markets)



**SHAREINVESTOR
WEBPRO**
Browser-Based Market Data
Analytics Platform



BURSASTATION
Advanced Charting Software
(Bursa Malaysia Only)

ShareInvestor is a technology based company with a focus on Internet media and we have operations in Malaysia, Singapore and Thailand.

We are the market leader in providing a combination of market data, analysis and news on various platforms to traders and investors.

Our websites include www.shareinvestor.com and www.bursastation.com.

More information about our products and services can be found at www.shareinvestorholdings.com

We are looking for Developers to join our team, in a challenging, yet fun and fulfilling environment. The successful applicants will leverage on the latest Internet technologies to help create financial applications and platforms for investors, listed companies and financial institutions. Fresh graduates are welcome to apply.

Interested candidates are encouraged to apply with full resume, present and expected salary and a recent photograph.

Please send these to hr.my@shareinvestor.com for processing. ShareInvestor regrets that only shortlisted candidates shall be notified.

Ruby on Rails Developer (1 vacancy)

Responsibilities:

- Develop quality web-based software modules on schedule with a focus on Ruby and Ruby on Rails applications.
- Explore and utilize the latest web-based technologies.
- Document design specifications, logic concepts and module description.
- Maintain and enhance existing web-based applications.

Requirements:

- Experience in web-based programming/scripting is essential. Candidate must be able to explain clearly technical aspects of his/her past experiences and projects.
- Passion for programming and desire to learn new languages like Go.
- Good Diploma/Degree in Computer Science/Computer Engineering.
- Able to work well in a team and be able to follow documentation and coding standards.
- Knowledge in any of the following would be an added advantage
 - Ruby and Ruby on Rails Framework
 - Javascript and jQuery library
 - Go
 - Perl

Application Developer (C++/STL) (1 vacancy)

Responsibilities:

- Deliver quality software modules on schedule.
- Document design specifications, conceptions, module description.
- Maintain and enhance existing applications.

Requirements:

- Passion for programming and desire to learn.
- Good Diploma/Degree in Computer Science/Computer Engineering.
- Skills in C++ is essential.
- Experience with Visual Studio, networking stack and Golang would be an advantage.
- Proactive, resourceful and self-motivated with strong analytical skills.
- Good interpersonal, written and communication skills.
- Able to work with little supervision.