

Invest

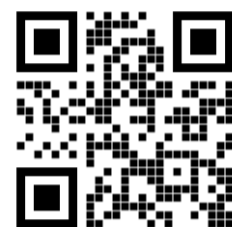
A Weekly e-Publication by SHAREINVESTOR.com

ISSUE

111

FRIDAY
17 JUNE
2022

Scan/Click QR to Register



Via email, every Friday

EPF ENHANCES i-INVEST PORTAL WITH NEW FEATURES FOR MAKING INFORMED DECISIONS

03	LEADERBOARD	13	DIVIDEND STOCKS	22	BEHIND THE ACTION
05	COMPANY SPOTLIGHT	14	BROKERS' CALL	27	FROM THE OBSERVER
07	SHARIAH MOMENTUM UP STOCKS	15	LONG COMPANIES	31	INSIDER ACTIVITY
09	UP TRENDING STOCKS	17	MARKET SENTIMENTS	34	INVESTOR RELATIONS
11	GROWTH STOCKS	21	REGIONAL MARKETS	36	CAREERS AT SHAREINVESTOR

Note From Publisher: For this issue, we don't have the usual Shariah Hot Stocks and Non-Shariah Hot Stocks pages. There were no stocks that met the Screener Criteria & Conditions on our stock market data analytics platform ShareInvestor WebPro.



SHAREINVESTOR®

Invest with Knowledge

CORPORATE

Managing Director (Malaysia) & Publisher
Edward Stanislaus
edward@shareinvestor.com

SALES & MARKETING

Director
Elizabeth Tan
elizabeth.tan@shareinvestor.com

Online IR

Manager
Letticia Wong
letticia.wong@shareinvestor.com

Advertising & Sponsorship Sales

Manager
Sharon Lee
sharon.lee@shareinvestor.com

MARKET DATA ANALYTICS

(marketdata.my@shareinvestor.com)
Account Manager
Heidee Ahmad
heidee.ahmad@shareinvestor.com
Coordinator
Watie Nordin
watie.nordin@shareinvestor.com

MARKET DATA ANALYTICS & EDITORIAL

Market Data & Media Coordinator
Silas Emmanuel Joseph
silas.joseph@shareinvestor.com

MARKET DATA ANALYTICS & EDITORIAL

Market Data Analyst
Nickson Aw
nickson.aw@shareinvestor.com

MARKETING COMMUNICATIONS

Marcomm Manager
Danny Ng

CREATIVE & DESIGN

Manager		Andric See
Asst. Manager		Ivy Yap
Web Developer		Nurul Atiqah Aiman Jasmin Izwan Rusli

IT APPS

Project Manager		Amir Yusoff
Sr. Software Engineer		Mohd. Qasem
Software Engineer		Lian Kok Keong

FINANCE, ADMIN & HR

Manager		Shireen Goh
Sn. Accounts Executive		Jessie Ho
Accounts Assistant		Ng Jin Yng

SHAREINVESTOR HOLDINGS

Chairman		Patrick Daniel
Group CEO		Christopher Lee
Group COO		Lim Dau Hee
Group CFO		Teo Siew May

“ GIVE A MAN A FISH AND YOU FEED HIM FOR A DAY; TEACH A MAN TO FISH AND YOU FEED HIM FOR A LIFETIME ”

ShareInvestor Malaysia Sdn. Bhd. (200001023956) (526564-M)
(Formerly known as SI Portal.com Sdn. Bhd.)
Unit No. DF2-07-03A, Level 7,
Persoft Tower, 6B Persiaran Tropicana,
47410 Petaling Jaya, Selangor Darul Ehsan.

Hotline : 603 7803 1791
Mobile : 011 6343 8939
Fax : 603 7803 1792

Website : www.ShareInvestor.com.my
www.ShareInvestorHoldings.com
www.Facebook.com/ShareInvestorMalaysia

ADVERTISEMENT ENQUIRY

SHAREINVESTOR WEBPRO

C² CHART

C² Chart is WebPro's new feature-packed technical analysis tool for the modern stock investor



Over 100 Indicators
Select your preferred indicators to best suit your technical strategies



Drawing Tools
Multiple drawing tools to easily identify chart patterns



Events Indicators
Key events can be pinned onto your charts for a better overview



Compare Tool
Conveniently compare multiple stock prices at the same time



Historical Data
Extract price data from over 30 years



Over 10 Chart Styles
Various charts to suit your preferred style



No App Needed
Access your charts from any computer or mobile



Easy Zoom
Intuitive zooming function on charts

www.shareinvestor.com - market data at your fingertips



ShareInvestor WebPro (www.shareinvestor.com/my)
Prices > Stock Prices > Bursa > click Stocks tab

1. mouse over Ranking > select Top Active > all Shariah stocks are denoted with an [S] > mouse over Column Layout > select Edit Customs > select Name > select Volume > select Last Done Price > Mouse Over Column Layout > select Custom
2. mouse over Ranking > select Top Turnover > all Shariah stocks are denoted with an [S] > mouse over Column Layout > select Edit Customs > select Name > select Last Done Price > select Value > Mouse Over Column Layout > select Custom
3. mouse over Ranking > select Top Gainers (Over 5 Trading Days) > mouse over Column Layout > select Edit Customs > select Name > select Last Done Price > select 5 Days Change > select 5 Days % Change > Mouse Over Column Layout > select Custom
4. mouse over Ranking > select Top Losers (Over 5 Trading Days)
5. mouse over Ranking > select Top % Gainers (Over 5 Trading Days)
6. mouse over Ranking > select Top % Losers (Over 5 Trading Days)

Shariah Top Actives (as at Yesterday)

Name	Price (RM)	Volume
TOPGLOV [S]	0.975	867,958
YONGTAI [S]	0.085	750,048
DNEX [S]	0.840	727,800
LGMS [S]	0.780	683,919
MNC [S]	0.015	543,888
JADEM [S]	0.900	358,095
YEWLEE [S]	0.290	264,265
WIDAD [S]	0.360	249,075
MQTECH [S]	0.040	214,739
MYEG [S]	0.870	212,382

Shariah Top Turnover (as at Yesterday)

Name	Price (RM)	Value (RM)
TOPGLOV [S]	0.975	85,910,665
PMETAL [S]	4.930	71,317,219
DNEX [S]	0.840	63,637,708
PCHEM [S]	9.630	56,754,650
LGMS [S]	0.780	55,600,867
TENAGA [S]	8.400	54,424,338
KLK [S]	24.040	36,268,036
JADEM [S]	0.900	32,663,610
HARTA [S]	2.860	31,249,919
INARI [S]	2.650	27,286,755

Top Gainers (over 5 Trading days as at Yesterday)

Name	Price (RM)	Change (RM)
NESTLE	140.000	+7.500
CARZO	1.820	+0.200
QL	5.150	+0.200
EUROSP	1.260	+0.160
TOYOVEN	0.605	+0.110
YNHPROP	3.210	+0.100
MISC	7.270	+0.090
PETGAS	16.580	+0.080
RAPID	12.540	+0.080
MGRC	0.715	+0.075

Top % Gainers (over 5 Trading days as at Yesterday)

Name	Price (RM)	Change (%)
ETH	0.165	+65.00
IQZAN	0.045	+50.00
GOCEAN	0.020	+33.33
TALAMT	0.025	+25.00
TOYOVEN	0.605	+22.22
XOXTECH	0.035	+16.67
EUROSP	1.260	+14.55
AMLEX	0.400	+14.29
EATECH	0.040	+14.29
SAPRES	0.320	+14.29

Top Losers (over 5 Trading days as at Yesterday)

Name	Price (RM)	Change (RM)
BKAWAN	23.740	-3.100
MPI	29.700	-2.940
HENGYUAN	4.860	-1.340
KLK	24.040	-1.100
PETRONM	6.360	-0.980
HARTA	2.860	-0.890
MSC	2.480	-0.810
VITROX	7.140	-0.710
KESM	6.900	-0.600
GENTING	4.620	-0.580

Top % Losers (over 5 Trading days as at Yesterday)

Name	Price (RM)	Change (%)
SAMAIDEN	0.605	-45.00
FINTEC	0.010	-33.33
MLAB	0.020	-33.33
NEXGRAM	0.010	-33.33
VERTICE	0.100	-31.03
RAMSSOL	0.290	-27.50
MQTECH	0.040	-27.27
PWORTH	0.115	-25.81
ALAM	0.030	-25.00
AT	0.015	-25.00



STROM

SWISS TIMEPIECES & JEWELLERY



StromWatch Asia

Tele : +65.9817.3378 Email : ll.stromasia@gmail.com

WWW.STROMWATCH.SWISS



YouTube

COMPANY BACKGROUND

Pertama Digital Berhad, formerly Sinotop Holdings Bhd, is an investment holding company primarily engaged in fabric production. Beginning in 2020, with the name change, Pertama Digital has pivoted to investing in fintech and govtech companies that provide solutions in the digital and mobile space. Its subsidiaries Television Airtime Services Sdn Bhd (TAS) and Dapat Vista Sdn Bhd, operate MyPay, a mobile payments app; eJamin, a digital court bail payment system; mySMS, a messaging service used by government agencies, and Mypay, a Coin Deposit operation.



Select Counter: Bursa | PERTAMA (8532.MY) | View

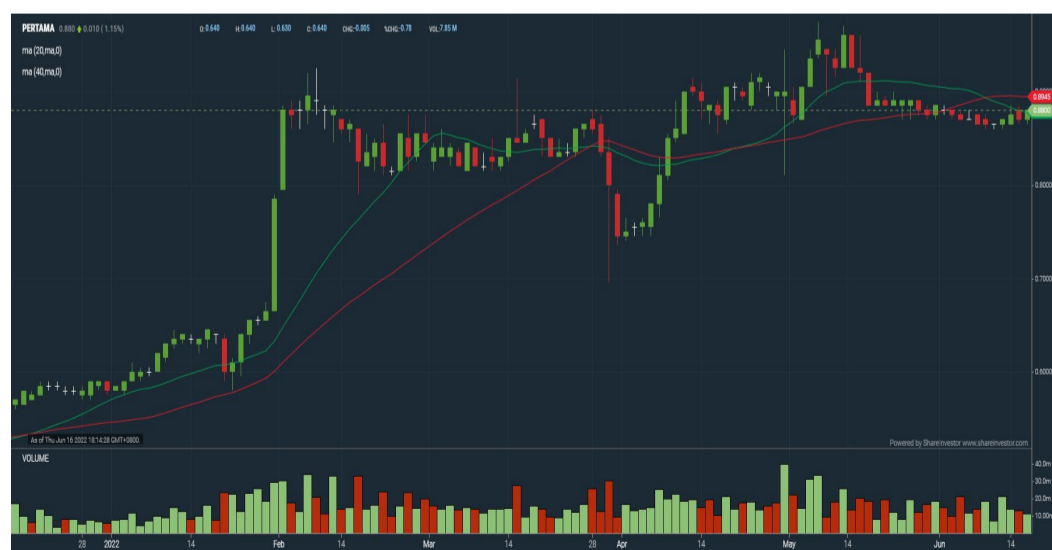
PERTAMA PERTAMA DIGITAL BERHAD Updated at 16 Jun 2022 16:57

Last (MYR): 0.880 ↑	Change: +0.010	High: 0.880	Remarks: -
	Change (%): +1.15	Low: 0.865	
Open: 0.870		Yesterday's Close: 0.870	
Buy Price: 0.875		Sell Price: 0.880	
Buy Volume ('00): 1,374		Sell Volume ('00): 6,077	
Cumulative Volume ('00): 115,792		Cumulative Value: 10,134,386	

Financial Analysis

Revenue Growth Increasing revenue in most recent year after at least 4 years of consecutive decreasing revenue. 😊	Profit Growth Profit to loss in most recent year. 😞
Net Earnings Margin Company is losing money and margin is not improving. 😞	Return on Assets (ROA) Negative ROA for most recent year. 😞
Return on Assets (ROA) ROA is improving by 10% a year over the past 36 months. 😊	Return on Equity (ROE) Negative ROE for most recent year. 😞
Return on Equity (ROE) ROE is improving by 10% a year over the past 36 months. 😊	

😊 Excellent 😊 Good 😊 Neutral 😟 Be Alert 😞 Watch Out



Historical Financials



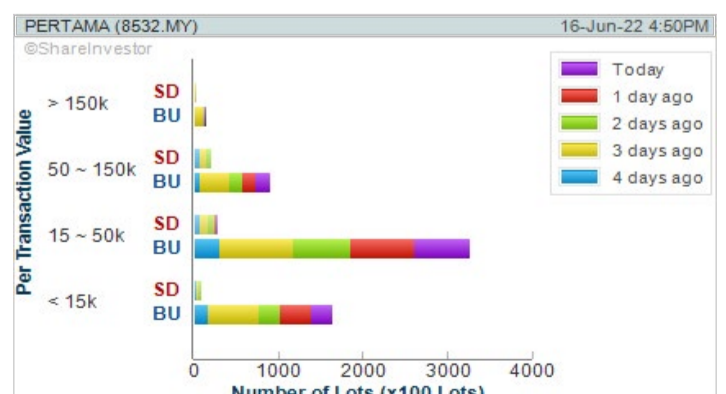
WebPro 9-Days Free Trial Registration
(worth RM9)
Sign Up Now



Key Statistics with Total Shareholder Returns

Total Shareholder Return

Period	Dividend Received	Capital Appreciation	Total Shareholder Return
Short Term Return	5 Days	-	+0.015
	10 Days	-	-
	20 Days	-	-0.048
Medium Term Return	3 Months	-	+0.025
	6 Months	-	+0.315
	1 Year	-	+0.400
Long Term Return	2 Years	-	+0.310
	3 Years	-	+0.660
	5 Years	-	+0.215
Annualised Return	Annualised	-	-



Disclaimer: The information on this page is provided as a service to readers. It does not constitute financial advice and/or any investment recommendations. Past performance is not indicative of future results. We assume no liability for damages resulting from or arising out of the use of such information. It would be best if you did your own research to make your personal investment decisions wisely or consult a licenced investment advisor.



Live deliciously.

From the first toast to the final bite, savor every moment with Sub-Zero, the refrigeration specialist, and Wolf, the cooking specialist. Entertain more often with thoughtfully designed, innovative appliances crafted to last for decades of beautiful, memorable meals.



Refrigeration. Cooking.

XTRA

Exclusively available at XTRA FURNITURE SDN BHD,
The Gardens Mall, Mid Valley City, 2nd Floor Unit, S236 & 237 (isetanside)
kitchen@xtrafurniture.com | xtrafurniture.com | XTRAFurniture | xtrafurnituremsia

Price & Volume Distribution Charts (as at Yesterday)

Technical Analysis

DEFINITION: Shariah compliant stocks with Technical Analysis showing Bullish Momentum and Price Uptrend. The share price closed at the highest price yesterday. The typical price was higher than the previous day's typical price.

CHART GUIDE: Volume Distribution Chart is a statistical interpretation of the current sentiment on each stock in graphical format. The highest bar categorized as >150k is likely to be traded by institutions or super dealers, while the lowest bar categorized as <15k usually represents retail investors. "Buy Up" refers to more buyers snatching up the lots queued at selling price. "Sell Down" refers to sellers selling their shares to the buying queue.



ShareInvestor WebPro > Screener > Market Screener (FA & TA) > select BURSA > add criteria

A. Criteria

- > click Add Criteria
- Fundamental Analysis Conditions tab > select (i) Revenue
- Technical Analysis Conditions tab select (ii) Average Volume
- Prices & Other Conditions tab > select (iii) Last Done Price
- Prices & Other Conditions tab > select (iv) Is Shariah Compliant
- Technical Analysis Conditions tab select (v) RSI Overbought
- Technical Analysis Conditions tab select (vi) Moving Average Below Close
- Technical Analysis Conditions tab select (vii) CCI Overbought

B. Conditions (Criteria Filters)

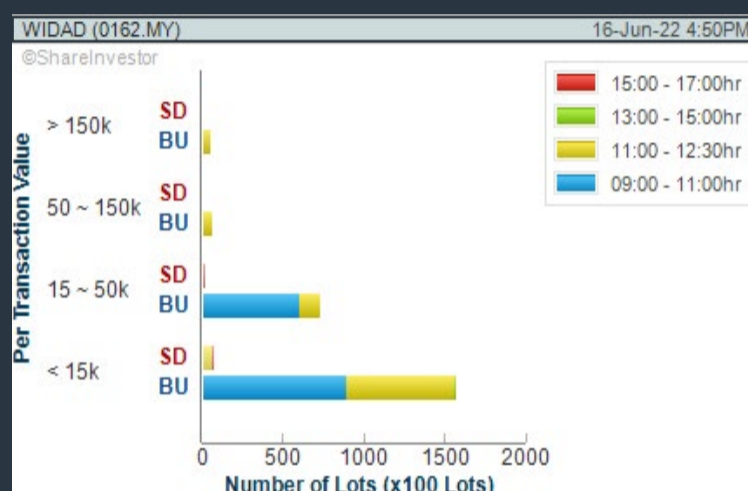
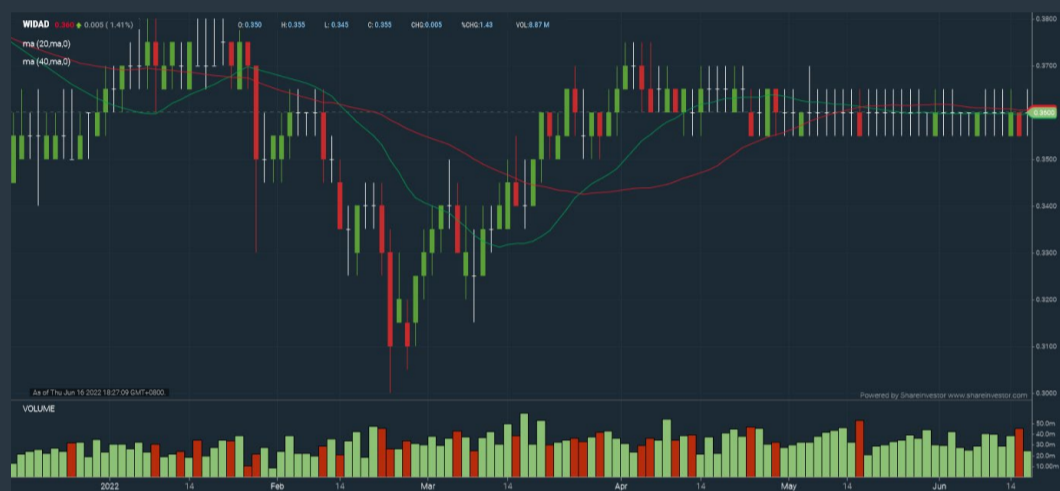
1. Revenue ("000) - select (more than) type (1) for the past select (1) financial year(s)
2. Average Volume - type (1) days average volume greater than type (10000) lots
3. Last Done Price - select (more than) type (0.3)
4. Is Shariah Compliant - select Yes
5. RSI Overbought - select RSI 1 above 99 for 1 days
6. Moving Average Below Close - select (MA) type (10) below close price for type (1) days
7. CCI Overbought - select CCI (2) above (0) for (1) days

- > click Save Template > Create New Template type (Shariah Momentum Up Stocks) > click Create
- > click Save Template as > select Shariah Momentum Up Stocks > click Save
- > click Screen Now (may take a few minutes)
- Sort By: Select (Vol) Select (Desc)
- Mouse over stock name > Charts > click C² Charts tab or Volume Distribution

WIDAD GROUP BERHAD (0162)

C² Chart

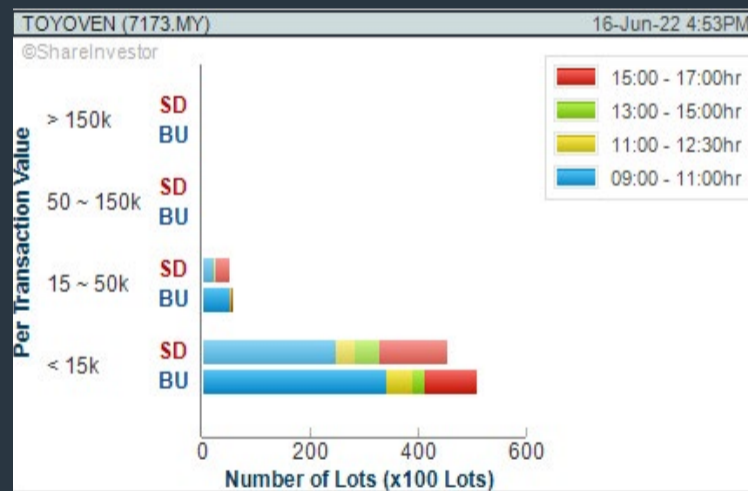
Analysis



TOYO VENTURES HOLDINGS BERHAD (7173)

C² Chart

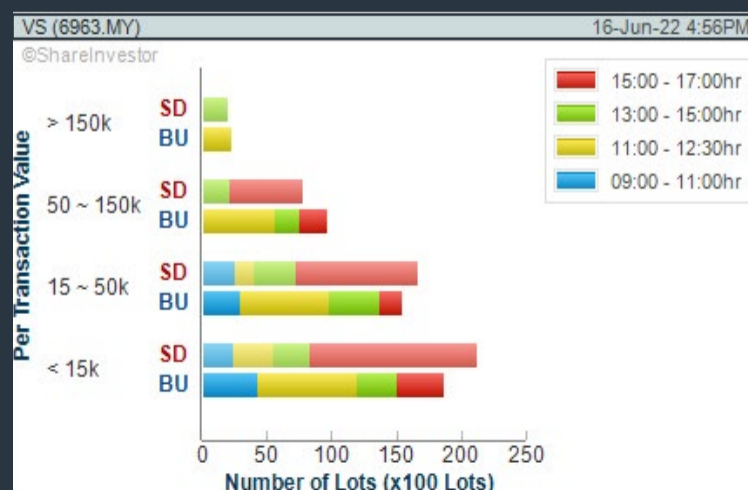
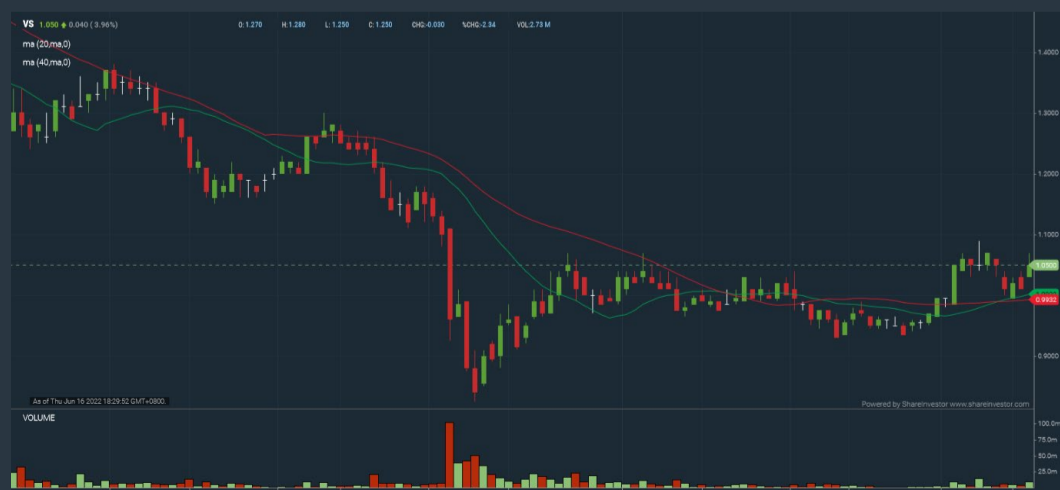
Analysis



V.S INDUSTRY BERHAD (6963)

C² Chart

Analysis



Disclaimer: The information on this page is provided as a service to readers. It does not constitute financial advice and/or any investment recommendations. Past performance is not indicative of future results. We assume no liability for damages resulting from or arising out of the use of such information. It would be best if you did your own research to make your personal investment decisions wisely or consult a licenced investment advisor.

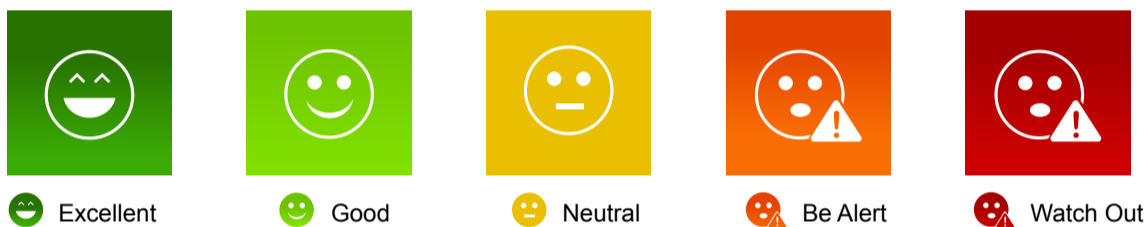
Smiley Grid

**Are you struggling to analyse financial information?
Do you find financial data overwhelming?**

Worry not, introducing our NEW feature, Smiley Grid

Smiley Grid makes the Factsheet fast and easy to understand.

It is a shortcut where key financial data have now been interpreted for you, and presented in easy-to-understand, colour coded icons.



With just a glance, you can easily identify strong or weak areas of a particular counter.

We do the analysis so you can make faster decisions.



Sign up for our 9 Days Free Trial and give it a try

9-Days FREE TRIAL WORTH (RM 9)

Price & Volume Distribution Charts (Over 5 trading days as at Yesterday)

Technical Analysis

DEFINITION: Stocks with Technical Analysis showing Bullish Momentum and Price Uptrend

CHART GUIDE: Volume Distribution Chart is a statistical interpretation of the current sentiment on each stock in graphical format. The highest bar categorized as >150k is likely to be traded by institutions or super dealers, while the lowest bar categorized as <15k usually represents retail investors. "Buy Up" refers to more buyers snatching up the lots queued at selling price. "Sell Down" refers to sellers selling their shares to the buying queue.



ShareInvestor WebPro > Screener > Market Screener (FA & TA) > select BURSA > add criteria

A. Criteria

- > click Add Criteria
- Fundamental Analysis Conditions tab > select (i) Revenue
- Technical Analysis Conditions tab select (ii) Moving Average Below Close
- Technical Analysis Conditions tab select (iii) Average Volume
- Prices & Other Conditions tab > select (iv) Last Done Price
- Technical Analysis Conditions tab select (v) Moving Average Below Close
- Technical Analysis Conditions tab select (v) Moving Average Bullish Crossover

B. Conditions

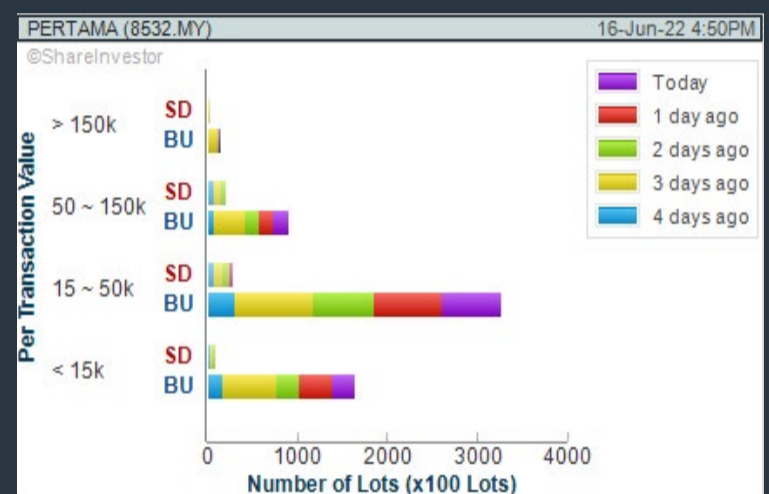
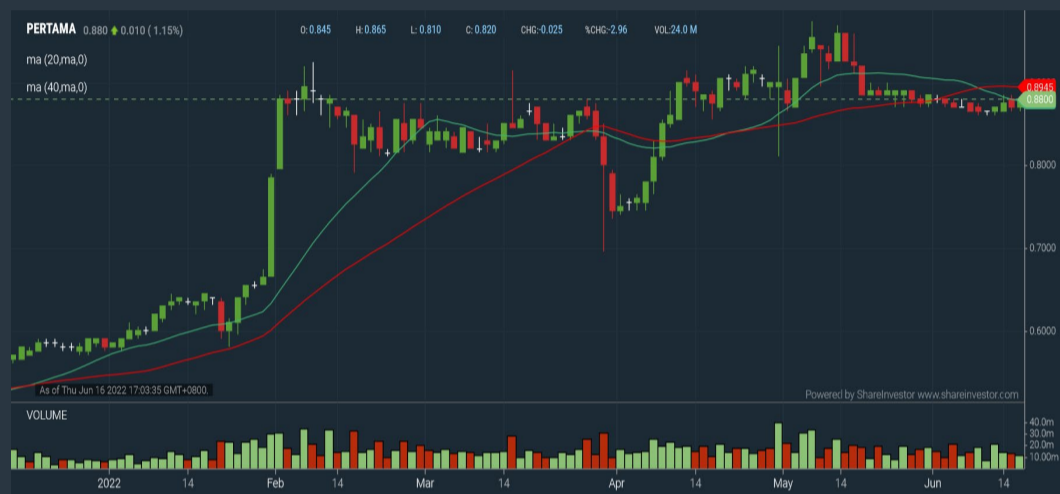
1. Revenue - select (more than) type (1) for the past select (1) financial year(s)
2. Moving Average Below Close - select (MA) type (20) below close price for type (1) days
3. Average Volume - type (5) days average volume type (10000) lots
4. Last Done Price - select (more than) type (0.3)
5. Moving Average Below Close - select (MA) type (10) below close price for type (1) days
6. Moving Average Bullish Crossover - select (MA) type (5) crossed above select (MA) type (10)

> click Save Template > Create New Template type (Non-Shariah Up-Trending Stocks) > click Create Click Save Template As > select Non-Shariah Up Trending Stocks > click Save
> click Screen Now (may take a few minutes)
Sort By: Select (Vol) Select (Desc)
Mouse over stock name > Charts > click C² Charts tab or Volume Distribution

PERTAMA DIGITAL BERHAD (8532)

C² Chart

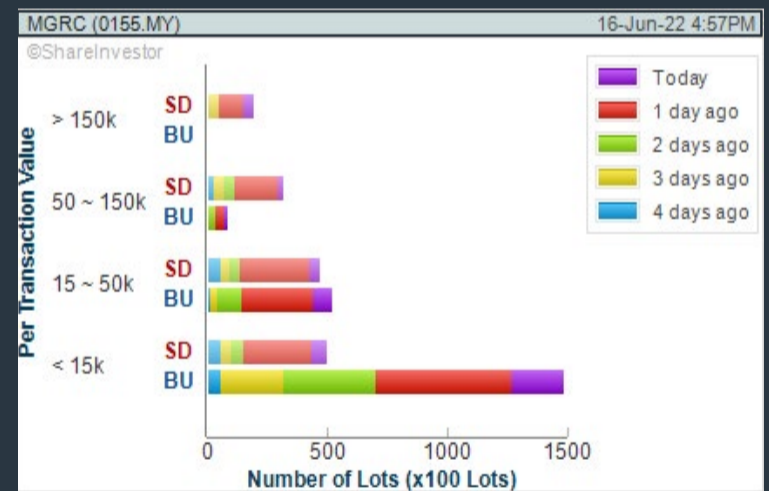
Analysis



MSIAN GENOMICS RES CENTRE BERHAD (0155)

C² Chart

Analysis



Disclaimer: The information on this page is provided as a service to readers. It does not constitute financial advice and/or any investment recommendations. Past performance is not indicative of future results. We assume no liability for damages resulting from or arising out of the use of such information. It would be best if you did your own research to make your personal investment decisions wisely or consult a licenced investment advisor.

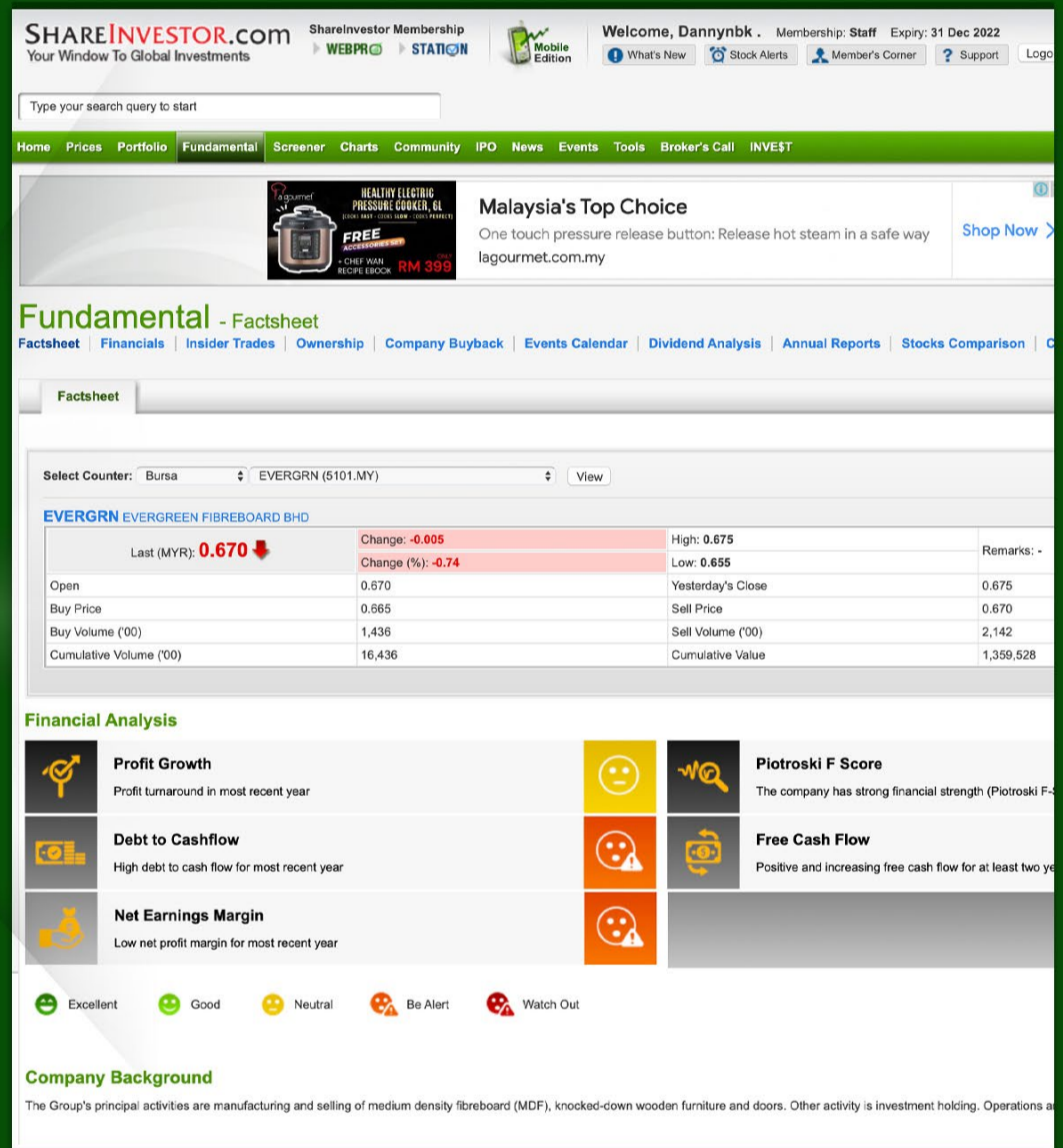
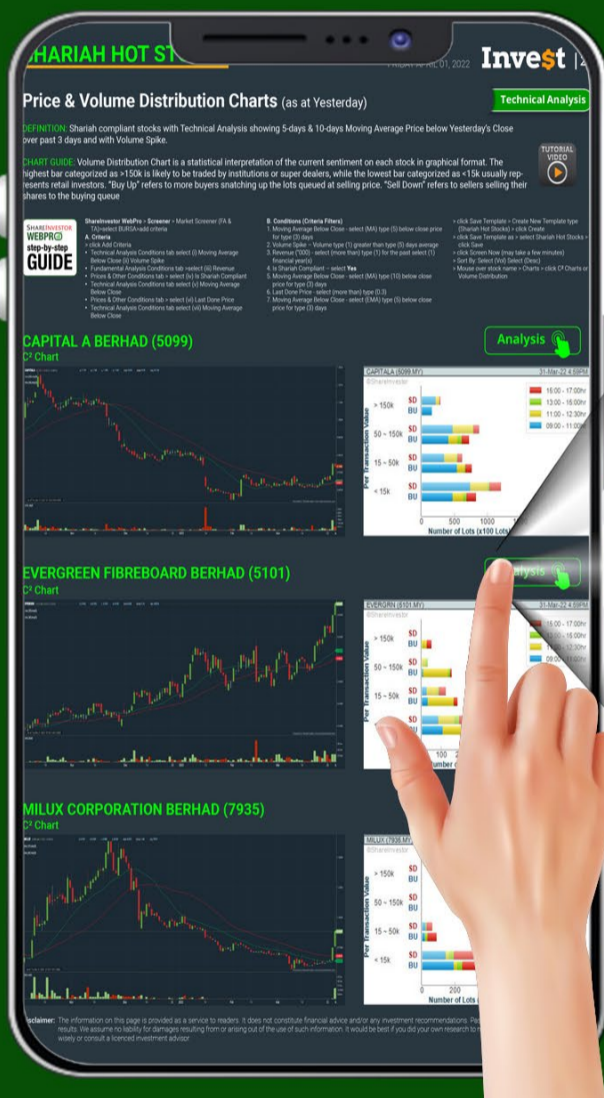
CHECK OUT
SHAREINVESTOR
BROKERS' CALL
Weekly Buy/Sell/Hold calls from leading Malaysian Brokerages.

[Go To Brokers' Call](#)

COMPANY ANALYSIS AT YOUR FINGERTIPS

Click the Analysis buttons to access the Factsheets of any company featured on the Hot Stocks, Momentum-Up, Up-Trending, Growth and Dividend Stocks pages.

Invest with knowledge



- Company Background
- Candlestick Chart
- Current Price
- Key Statistics
- Peer Comparison
- Total Shareholder Returns
- Price Movements
- IPO performance
- Financial Reports
- Historical Price Data
- Latest News
- More



Price & Total Shareholder Return (as at Yesterday)

Fundamental Analysis

DEFINITION: Company revenue is growing and making good quality of earnings with positive Free Cash Flow.

CHART GUIDE: Total Shareholder Return (TSR) combines share price appreciation and distributions paid to show the total return to the shareholder expressed as a percentage.



ShareInvestor WebPro > Screener > Market Screener (FA & TA) > select BURSA > add criteria

A. Criteria

1. Fundamental Analysis Conditions tab >select (i) Free Cash Flow, (ii) Revenue Growth, (iii) Gross Profit (Earnings) Margin, (iv) Quality of Earnings, (v) Total Shareholder Returns, > click Add Criteria
2. Fundamental Analysis Conditions tab >select (vi) Total Shareholder Returns > click Add Criteria

B. Conditions (Criteria Filters)

1. Free Cash Flow - select (more than) type (1) for the past select (1) financial year(s)
2. Revenue Growth - select (more than) type (1) for the past select (1) financial year(s)
3. Gross Profit (Earnings) Margin - select (more than) type (30) % for the past select (1) financial year(s)
4. Quality of Earnings - select (more than) type (1) for the past select (1) financial year(s)
5. Total Shareholder Return - select (more than) type (5) % for the past select (3) financial year(s)
6. Total Shareholder Return - select (more than) type (5) % for the past select (5) financial year(s)

- > click Save Template > Create New Template type (Growth Companies) > click Create
- > click Save Template as > select Growth Companies > click Save
- > click Screen Now (may take a few minutes)
- > Sort By: Select (Revenue Growth) Select (Desc)
- > Mouse over stock name > Factsheet > looking for Total Shareholder Return

PETRONAS CHEMICALS GROUP BERHAD (5183)

C² Chart

Analysis



Period	Dividend Received	Capital Appreciation	Total Shareholder Return
Short Term Return	5 Days	-0.220	-2.23 %
	10 Days	-0.430	-4.27 %
	20 Days	-0.350	-3.51 %
Medium Term Return	3 Months	+0.320	+3.44 %
	6 Months	0.230	+14.52 %
	1 Year	0.580	+27.15 %
Long Term Return	2 Years	0.680	+60.52 %
	3 Years	0.880	+26.98 %
	5 Years	1.450	+56.83 %
Annualised Return	Annualised	-	+9.42 %

TA ANN HOLDINGS BERHAD (5012)

C² Chart

Analysis

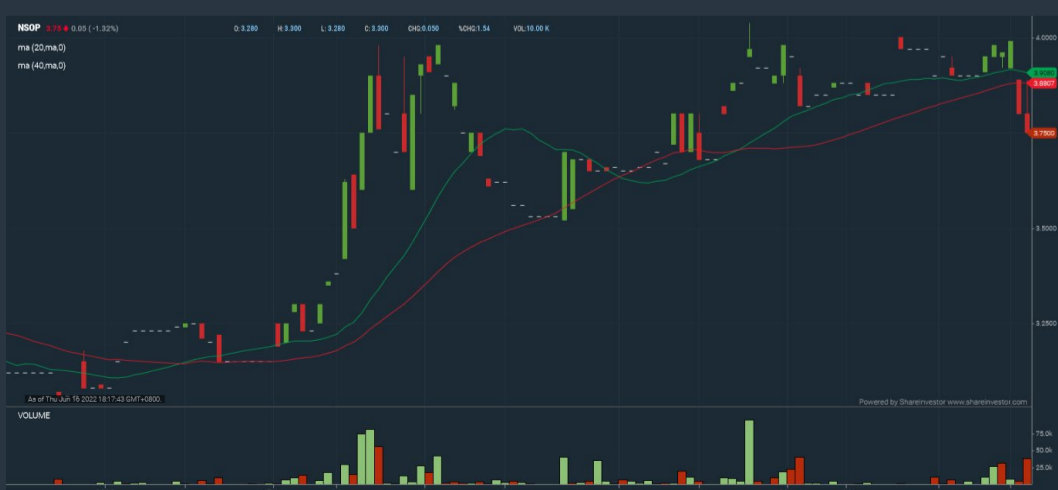


Period	Dividend Received	Capital Appreciation	Total Shareholder Return
Short Term Return	5 Days	-0.710	-14.12 %
	10 Days	0.100	-10.89 %
	20 Days	0.100	-19.05 %
Medium Term Return	3 Months	0.100	-11.42 %
	6 Months	0.350	+37.76 %
	1 Year	0.450	+77.99 %
Long Term Return	2 Years	0.600	+102.47 %
	3 Years	0.650	+115.15 %
	5 Years	0.800	+44.63 %
Annualised Return	Annualised	-	+7.66 %

NEGRI SEMBILAN OIL PALMS BERHAD (2038)

C² Chart

Analysis



Period	Dividend Received	Capital Appreciation	Total Shareholder Return
Short Term Return	5 Days	0.100	-1.28 %
	10 Days	0.100	-2.53 %
	20 Days	0.100	-
Medium Term Return	3 Months	0.100	+8.15 %
	6 Months	0.100	+23.40 %
	1 Year	0.280	+37.31 %
Long Term Return	2 Years	0.340	+55.22 %
	3 Years	0.380	+27.32 %
	5 Years	0.500	+8.81 %
Annualised Return	Annualised	-	+1.70 %

Disclaimer: The information on this page is provided as a service to readers. It does not constitute financial advice and/or any investment recommendations. Past performance is not indicative of future results. We assume no liability for damages resulting from or arising out of the use of such information. It would be best if you did your own research to make your personal investment decisions wisely or consult a licenced investment advisor.

BURSASTATION Professional



Stock Scanning

- Technical Analysis (TA) Market Scanner
- Fundamental Analysis (FA) Market Scanner



Market Data

- Equities
- Derivatives

Monitoring

- Portfolio
- Stock Alerts
- Price Spread Calculator



Scan. Chart. Analyse.

Be The Intelligent Investor



Price Movements

- Streaming Prices
- Time & Sales
- Trade Summary Matrix
- Quote Movements
- 5 Levels Market Depth
- Historical Price Download

Charts

- Intraday Charts
- Interactive Charts
- Historical Charts
- Volume Distribution Charts



Fundamentals

- Factsheets
- Financials
- Insider Trades



Brought to you as a collaborative effort by ShareInvestor and Bursa Malaysia, **BursaStation Professional** is designed with you, the user, in mind, as a user-friendly yet full of powerful features that will appeal to investors/traders who need instant access to fundamental, technical, and trading data, anytime, anywhere. **BursaStation Professional** is a state-of-the-art Stock Market Tracker with Charting Software that places in your hands the power to make better investment decisions.

[CLICK HERE TO START YOUR 14-DAYS FREE TRIAL](#)

Price & Total Shareholder Return (as at Yesterday)

Fundamental Analysis

DEFINITION: Company is paying out dividend with low or moderate leverage.

CHART GUIDE: Total Shareholder Return (TSR) combines share price appreciation and distributions paid to show the total return to the shareholder expressed as a percentage.



ShareInvestor WebPro > Screener > Market Screener (FA & TA) > select BURSA > add criteria

A. Criteria

- > click Add Criteria
- Fundamental Analysis Conditions tab >select (i) Dividend Yield (Historical)
- Fundamental Analysis Conditions tab >select (ii) Dividend Payout (Historical)
- Fundamental Analysis Conditions tab >select (iii) Total Debt To Equity
- Fundamental Analysis Conditions tab >select (iv) Total Shareholder Returns
- Fundamental Analysis Conditions tab >select (v) Total Shareholder Returns
- Fundamental Analysis Conditions tab / >select (vi) CAGR of Dividend Per Share

- Fundamental Analysis Conditions tab >select (vii) CAGR of Dividend Per Share

B. Conditions (Criteria Filters)

1. Dividend Yield - select (more than) type (1) % for the past select (1) financial year(s)
2. Dividend Payout (Historical) - select (between) type (0.5) to type (1) times for the past select (1) financial year(s)
3. Total Debt to Equity - select (less than) type (1) for the past select (1) financial year(s)
4. Total Shareholder Return - select (more than) type (5) % for the past select (3) financial year(s)
5. Total Shareholder Return - select (more than) type (5) % for the past select (5) financial year(s)

6. CAGR of Dividend Per Share - select (less than) type (30) % for the past select (5) financial year(s)
7. CAGR of Dividend Per Share - select (more than) type (1) % for the past select (5) financial year(s)

- > click Save Template > Create New Template type (Dividend Companies) > click Create
- > click Save Template as > select Dividend Companies > click Save
- > click Screen Now (may take a few minutes)
- > Sort By: Select (Dividend Yield) Select (Desc)
- > Mouse over stock name > Factsheet > looking for Total Shareholder Return

UNITED PLANTATIONS BERHAD (2089)

C² Chart



Period	Dividend Received	Capital Appreciation	Total Shareholder Return
Short Term Return	5 Days	-	-0.140
	10 Days	-	-0.120
	20 Days	-	-0.020
Medium Term Return	3 Months	0.850	-0.399
	6 Months	0.850	+0.727
	1 Year	1.150	+0.905
Long Term Return	2 Years	2.000	+1.733
	3 Years	3.350	+2.280
	5 Years	6.250	+2.482
Annualised Return	Annualised	-	-
			+11.60 %

FORMOSA PROSONIC INDUSTRIES (9172)

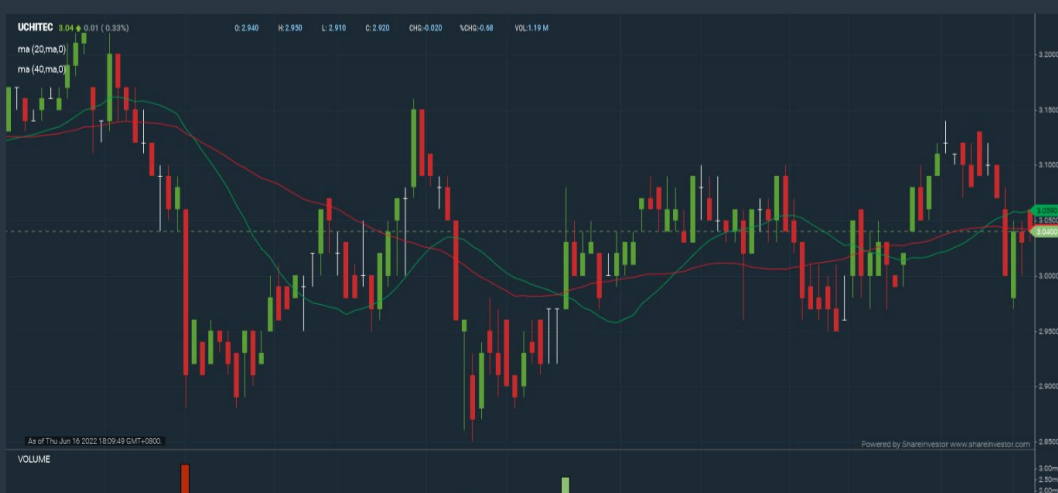
C² Chart



Period	Dividend Received	Capital Appreciation	Total Shareholder Return
Short Term Return	5 Days	-	-0.280
	10 Days	-	-0.350
	20 Days	-	-0.340
Medium Term Return	3 Months	0.200	-0.600
	6 Months	0.200	-0.710
	1 Year	0.200	-0.080
Long Term Return	2 Years	0.340	+1.460
	3 Years	0.450	+1.130
	5 Years	0.630	+1.940
Annualised Return	Annualised	-	-
			+30.98 %

UCHI TECHNOLOGIES BERHAD (7100)

C² Chart



Period	Dividend Received	Capital Appreciation	Total Shareholder Return
Short Term Return	5 Days	-	-0.050
	10 Days	-	-0.080
	20 Days	-	+0.040
Medium Term Return	3 Months	-	+0.110
	6 Months	0.090	-0.090
	1 Year	0.185	-0.150
Long Term Return	2 Years	0.345	+0.440
	3 Years	0.490	+0.150
	5 Years	0.890	+1.402
Annualised Return	Annualised	-	-
			+19.13 %

Disclaimer: The information on this page is provided as a service to readers. It does not constitute financial advice and/or any investment recommendations. Past performance is not indicative of future results. We assume no liability for damages resulting from or arising out of the use of such information. It would be best if you did your own research to make your personal investment decisions wisely or consult a licenced investment advisor.

Week: 10 Jun - 16 Jun 2022

More Brokers' Call 

APEX <small>... See More</small>	Call	Target Price	Release Date
Top Glove Corporation Bhd (7113)	SELL	RM1.10	10 Jun 2022
AMINVESTMENT BANK <small>... See More</small>	Call	Target Price	Release Date
Top Glove Corporation Bhd (7113)	HOLD	RM1.08	10 Jun 2022
Bermaz Auto Berhad (5248)	BUY	RM2.25	14 Jun 2022
BIMB SECURITIES SDN BHD <small>... See More</small>	Call	Target Price	Release Date
Top Glove Corporation Bhd (7113)	SELL	RM1.00	10 Jun 2022
MY E.G. Services Berhad (0138)	BUY	RM1.45	13 Jun 2022
Reservoir Link Energy Bhd (0219)	BUY	RM0.52	15 Jun 2022
CGS CIMB <small>... See More</small>	Call	Target Price	Release Date
Bermaz Auto Berhad (5248)	ADD	RM2.40	14 Jun 2022
Astro Malaysia Holdings Berhad (6399)	ADD	RM1.45	15 Jun 2022
KENANGA <small>... See More</small>	Call	Target Price	Release Date
Bermaz Auto Berhad (5248)	OUTPERFORM	RM2.30	14 Jun 2022
KESM Industries Berhad (9334)	MARKET PERFORM	RM7.50	15 Jun 2022
Pestech International Berhad (5219)	OUTPERFORM	RM0.66	16 Jun 2022
MALACCA SECURITIES SDN BHD <small>... See More</small>	Call	Target Price	Release Date
Supercomnet Technologies Berhad (0001)	BUY	RM1.51	10 Jun 2022
MIDF <small>... See More</small>	Call	Target Price	Release Date
Scientex Packaging (Ayer Keroh) Berhad (8125)	BUY	RM2.83	13 Jun 2022
Pharmaniaga Berhad (7081)	BUY	RM0.91	14 Jun 2022
Cahaya Mata Sarawak Berhad (2852)	BUY	RM1.37	16 Jun 2022
JOB KAYHIAN <small>... See More</small>	Call	Target Price	Release Date
British American Tobacco (Malaysia) Berhad (4162)	BUY	RM16.05	13 Jun 2022
Scientex Berhad (4731)	HOLD	RM3.92	14 Jun 2022
RCE Capital Berhad (9296)	BUY	RM1.94	15 Jun 2022

Disclaimer: InveSt does not accept any liability whatsoever for any direct, indirect or consequential losses (including loss of profit) or damages that may arise from the use of information or opinions in this publication. The information and opinions in InveSt are not to be considered as an offer to sell or buy any of the securities discussed. Opinions expressed are subject to change without notice. The Brokers may, from time to time, have interests or positions in the securities mentioned. For the full report on each item listed on this page, please visit https://www.shareinvestor.com/my/brokers_call.

DEFINITION: Top 10 stocks with Technical Analysis plus Pattern Matching by 60 pre-defined indicators by the system showing a higher probability of bullish sentiment on the share price.



ShareInvestor WebPro > Screener > Predefined TA Screens > select market BURSA > Most Long Signals > click Scan Results or mouse over each company

CAELY HOLDINGS BERHAD (7154.MY)

CAELY

Price updated at 16 Jun 2022 16:52

Last: 0.390	Change: -0.035	Volume: 11,938
	Change (%): -8.24	Range: 0.385 - 0.435

TA Scanner Results based on historical data up to 16 Jun 2022

Condition	Signal	Explanation
Bollinger Band: Bullish Long Term Volatility Breakout and Trending	Long	1. Close price above upper bollinger band(33,1). 2. Volume above average volume(50). 3. Average volume(50) is above 300,000.
DM: Bullish Directional Movement	Long	-DI(14) crossed below +DI(14)
MA: Bullish Price Crossover	Long	1. Close price crossed above MA(40) within the last 1 day. 2. Previous day close price is below the MA(10) for the last 5 days
MACD: Bullish MACD Crossover	Long	1. MACD(12,26) diff line crossed above the MACD(12,26) signal line. 2. MACD Histogram(12,26) is above 0.
Parabolic SAR: Bearish Parabolic SAR Reversal	Neutral	1. Parabolic SAR 1 day ago above close price 1 day ago for the last 5 days. 2. Parabolic SAR below close price
Volume: Volume Spike	Long	1. Volume is more than 500% above average volume(10). 2. Volume above 200000. 3. Close price above 0.10

LFE CORPORATION BERHAD (7170.MY)

LFE CORP

Price updated at 16 Jun 2022 16:59

Last: 0.105	Change: -0.020	Volume: 2,180
	Change (%): -16.00	Range: 0.105 - 0.120

TA Scanner Results based on historical data up to 16 Jun 2022

Condition	Signal	Explanation
Bollinger Band: Bullish Lower Bollinger Band Support	Long	1. Low 1 day ago below lower bollinger band(20,2). 2. Close above close 1 day ago. 3. Average volume(5) is above 100,000.
DM: Bullish Directional Movement	Long	-DI(14) crossed below +DI(14)
MA: Bullish Price Crossover	Long	1. Close price crossed above MA(40) within the last 1 day. 2. Previous day close price is below the MA(10) for the last 5 days
MACD: Bullish MACD Crossover	Long	1. MACD(12,26) diff line crossed above the MACD(12,26) signal line. 2. MACD Histogram(12,26) is above 0.
Parabolic SAR: Bearish Parabolic SAR Reversal	Neutral	1. Parabolic SAR 1 day ago above close price 1 day ago for the last 5 days. 2. Parabolic SAR below close price
Stochastic: Fast Stochastic Buy Signal	Long	1. Fast Stochastic(15,5) %K crossed above 20. 2. Fast Stochastic(15,5) %K 1 day ago was below 20 for the last 5 days. 3. Average volume(30) is above 50000

LION POSIM BERHAD (8486.MY)

LIONPSIM

Price updated at 16 Jun 2022 16:30

Last: 0.535	Change: -0.005	Volume: 210
	Change (%): -0.93	Range: 0.505 - 0.535

TA Scanner Results based on historical data up to 16 Jun 2022

Condition	Signal	Explanation
DM: Bullish Directional Movement	Long	-DI(14) crossed below +DI(14)

ELSOFT RESEARCH BERHAD (0090.MY)

ELSOFT

Price updated at 16 Jun 2022 16:55

Last: 0.685	Change: +0.005	Volume: 1,700
	Change (%): +0.74	Range: 0.680 - 0.690

TA Scanner Results based on historical data up to 16 Jun 2022

Condition	Signal	Explanation
Bollinger Band: Bullish Lower Bollinger Band Support	Long	1. Low 1 day ago below lower bollinger band(20,2). 2. Close above close 1 day ago. 3. Average volume(5) is above 100,000.
Bollinger Band: Low Below Lower Bollinger Band	Neutral	1. Low below lower bollinger band(20,2). 2. Average volume(5) is above 100,000.
CCI: Bullish CCI Oversold And Reversing	Long	1. CCI(26) below -100 and CCI(26) 1 day ago decreasing for the last 3 days. 2. CCI(26) above CCI(26) 1 day ago
Candlestick: Bullish Harami Cross	Long	Bullish: Harami Cross
Candlestick: Indecision Doji	Neutral	Indecision: Doji
Williams %R: Bullish Williams %R	Long	1. Williams %R(26) between -80 and -100. 2. Average volume(5) is above 100,000.

CYPARK RESOURCES BERHAD (5184.MY)

CYPARK

Price updated at 16 Jun 2022 16:59

Last: 0.285	Change: -0.005	Volume: 138,600
	Change (%): -1.72	Range: 0.280 - 0.305

TA Scanner Results based on historical data up to 16 Jun 2022

Condition	Signal	Explanation
MACD: Bullish MACD Divergence	Long	1. Close price is decreasing for the last 3 days. 2. MACD(12,26) diff line is increasing for the last 3 days.
Price: Consecutive Days Loss	Short	1. Close price has been decreasing over the last 5 days. 2. Average volume(5) is above 100,000.
Price: New 52 Week Low	Short	1. Stock reach a new 52 week low. 2. Average volume(30) is above 50000.
RSI: RSI Oversold	Long	1. RSI(20) is below 20. 2. RSI(20) is decreasing for the last 3 days. 3. Stock has more than 75 days of historical data.
Volume: Consecutive Days Of Increasing Average Volume	Long	1. Average Volume(20) has been increasing over the last 2 weeks. 2. Average volume(20) is above 100000
Williams %R: Bullish Williams %R	Long	1. Williams %R(26) between -80 and -100. 2. Average volume(5) is above 100,000.

Disclaimer: The information on this page is provided as a service to readers. It does not constitute financial advice and/or any investment recommendations. Past performance is not indicative of future results. We assume no liability for damages resulting from or arising out of the use of such information. It would be best if you did your own research to make your personal investment decisions wisely or consult a licenced investment advisor.

Condition	Signal	Explanation
MA: Short Term Bullish Moving Average Crossover	Long	MA(10) crossed above MA(15) within the last 1 day.
MACD: Bullish MACD Crossover	Long	1. MACD(12,26) diff line crossed above the MACD(12,26) signal line. 2. MACD Histogram(12,26) is above 0.
Parabolic SAR: Bearish Parabolic SAR Reversal	Neutral	1. Parabolic SAR 1 day ago above close price 1 day ago for the last 5 days. 2. Parabolic SAR below close price

CITAGLOBAL BERHAD (7245.MY)

CITAGLB

Price updated at 16 Jun 2022 16:58

Last: 0.195	Change: -0.005	Volume: 49,851
	Change (%): -2.50	Range: 0.190 - 0.205

TA Scanner Results based on historical data up to 16 Jun 2022

Condition	Signal	Explanation
Bollinger Band: Bullish Lower Bollinger Band Support	Long	1. Low 1 day ago below lower bollinger band(20,2). 2. Close above close 1 day ago. 3. Average volume(5) is above 100,000.
Bollinger Band: Low Below Lower Bollinger Band	Neutral	1. Low below lower bollinger band(20,2). 2. Average volume(5) is above 100,000.
Candlestick: Bullish Engulfing	Long	Bullish: Engulfing
RSI: Short Term RSI 50 Bullish Crossover	Long	1. RSI(20) crossed above 50 within the last 1 day and RSI(20) 1 day ago below 50 for the last 5 days. 2. Volume above average volume(125). 3. Average volume(5) is above 100,000.
Volume: Consecutive Days Of Increasing Average Volume	Long	1. Average Volume(20) has been increasing over the last 2 weeks. 2. Average volume(20) is above 100000

AXTERIA GROUP BERHAD (7120.MY)

AXTERIA

Price updated at 16 Jun 2022 16:57

Last: 0.170	Change: +0.005	Volume: 4,470
	Change (%): +3.03	Range: 0.165 - 0.175

TA Scanner Results based on historical data up to 16 Jun 2022

Condition	Signal	Explanation
Bollinger Band: Low Below Lower Bollinger Band	Neutral	1. Low below lower bollinger band(20,2). 2. Average volume(5) is above 100,000.
CCI: Bullish CCI Oversold And Reversing	Long	1. CCI(26) below -100 and CCI(26) 1 day ago decreasing for the last 3 days. 2. CCI(26) above CCI(26) 1 day ago
MACD: Oversold	Long	1. MACD Histogram(12,26,9) reached a new 6 month low. 2. MACD Histogram(12,26,9) has been below 0 for the last 3 weeks.
Price: New 52 Week Low	Short	1. Stock reach a new 52 week low. 2. Average volume(30) is above 50000.
Volume: Volume Spike	Long	1. Volume is more than 500% above average volume(10). 2. Volume above 200000. 3. Close price above 0.10
Williams %R: Bullish Williams %R	Long	1. Williams %R(26) between -80 and -100. 2. Average volume(5) is above 100,000.

SINARAN ADVANCE GROUP BERHAD (5172.MY)

SINARAN

Price updated at 16 Jun 2022 16:42

Last: 0.090	Change: -	Volume: 8,123
	Change (%): -	Range: 0.085 - 0.095

TA Scanner Results based on historical data up to 16 Jun 2022

Condition	Signal	Explanation
Bollinger Band: High Above Upper Bollinger Band	Neutral	1. High above upper bollinger band(20,2). 2. Average volume(5) is above 100,000.
DM: Bullish Directional Movement	Long	-DI(14) crossed below +DI(14)
Donchian Channels: High Above Upper Donchian Channels	Long	High crossed above the upper Donchian Channel(14,4)

CLASSIC SCENIC BERHAD (7202.MY)

CSCENIC

Price updated at 16 Jun 2022 16:43

Last: 0.670	Change: +0.005	Volume: 38,888
	Change (%): +0.75	Range: 0.670 - 0.685

TA Scanner Results based on historical data up to 16 Jun 2022

Condition	Signal	Explanation
Bollinger Band: Low Below Lower Bollinger Band	Neutral	1. Low below lower bollinger band(20,2). 2. Average volume(5) is above 100,000.
Price: Consecutive Days Loss	Short	1. Close price has been decreasing over the last 5 days. 2. Average volume(5) is above 100,000.
Volume: 10 Days large value Buy Up trade	Long	1. 150K value Buy Up greater than Sell Down by 20% for 10 days. 2. 50K-100K value Buy Up greater than Sell Down by 20% for 10 days. 3. Average volume(10) is above 1000000
Volume: 5 Days large value Buy Up trade	Long	1. 150K value Buy Up greater than Sell Down by 20% for 5 days. 2. 50K-100K value Buy Up greater than Sell Down by 20% for 5 days. 3. Average volume(10) is above 1000000
Williams %R: Bullish Williams %R	Long	1. Williams %R(26) between -80 and -100. 2. Average volume(5) is above 100,000.

KEJURUTERAAN ASASTERA BERHAD (0193.MY)

KAB

Price updated at 16 Jun 2022 16:51

Last: 0.400	Change: -	Volume: 18,860
	Change (%): -	Range: 0.395 - 0.405

TA Scanner Results based on historical data up to 16 Jun 2022

Condition	Signal	Explanation
Stochastic: Fast Stochastic Buy Signal	Long	1. Fast Stochastic(15,5) %K crossed above 20. 2. Fast Stochastic(15,5) %K 1 day ago was below 20 for the last 5 days. 3. Average volume(30) is above 50000
Volume: 10 Days large value Buy Up trade	Long	1. 150K value Buy Up greater than Sell Down by 20% for 10 days. 2. 50K-100K value Buy Up greater than Sell Down by 20% for 10 days. 3. Average volume(10) is above 1000000
Volume: 5 Days large value Buy Up trade	Long	1. 150K value Buy Up greater than Sell Down by 20% for 5 days. 2. 50K-100K value Buy Up greater than Sell Down by 20% for 5 days. 3. Average volume(10) is above 1000000
Williams %R: Bullish Williams %R	Long	1. Williams %R(26) between -80 and -100. 2. Average volume(5) is above 100,000.

Disclaimer: The information on this page is provided as a service to readers. It does not constitute financial advice and/or any investment recommendations. Past performance is not indicative of future results. We assume no liability for damages resulting from or arising out of the use of such information. It would be best if you did your own research to make your personal investment decisions wisely or consult a licenced investment advisor.

MACD: Bullish MACD Crossover	Long	1. MACD(12,26) diff line crossed above the MACD(12,26) signal line. 2. MACD Histogram(12,26) is above 0.
Parabolic SAR: Bullish Parabolic SAR Reversal	Neutral	1. Parabolic SAR 1 day ago below close price 1 day ago for the last 5 days. 2. Parabolic SAR above close price
RSI: Short Term RSI 50 Bullish Crossover	Long	1. RSI(20) crossed above 50 within the last 1 day and RSI(20) 1 day ago below 50 for the last 5 days. 2. Volume above average volume(125). 3. Average volume(5) is above 100,000.

EPF ENHANCES i-INVEST PORTAL WITH NEW FEATURES FOR MAKING INFORMED DECISIONS

The Employees Provident Fund (EPF) has rolled out new features and tools on the i-Invest web portal to improve user experience. Various web features of i-Invest such as transactional functions, suitability assessment and useful information on approved unit trust funds, and the fund management institutions (FMIs) offering them, are now available on the i-Akaun mobile application, with additional features to be added in the coming months. In an effort to help members make more informed decisions, the EPF has introduced the Historical Investment Performance Dashboard to enable members to analyse investment performance returns across various time horizons. This new feature, which is the first of its kind in the domestic fund management industry, provides a display of investment returns

based on three key categories to enable comparisons to be made at the fund level, FMI level and overall portfolio level. The EPF has also introduced an investment simulator as a tool to help members assess investment decisions based on five key parameters. Investment objectives can now be simulated based on a member's choice of the initial investment amount, monthly investment amount, investment period, rate of return or ending investment value. The enhanced i-Invest portal has also incorporated Lipper-assigned benchmarks for members to compare against the unit trust funds' performances. The i-Invest portal, which was launched in August 2019, offers a wide range of functions, flexibility and convenience for members to conduct investment decisions, as well as monitor their investments at any time and from anywhere. Through this facility, members can compare between unit trust funds offered by the FMIs and obtain a consolidated view of their investment holdings, information on investment costs, fund performance history, as well as statutory information related to the FMIs. The EPF said it will continue to ensure that the i-Invest portal is improved from time to time for the benefit of its members and invites feedback on the portal via the link at <https://cms.kwsp.gov.my/survey/surveyfront/index?sid=54>

RECOVERY ON THE HORIZON FOR MALAYSIAN ECONOMY, BUT CHALLENGES REMAIN – BURSA CHAIRMAN

According to Bursa Malaysia chairman Tan Sri Abdul Wahid Omar, Malaysia must be clear-eyed about the challenges on the horizon despite being fortified by sound economic fundamentals and the economy on its way to a recovery after turning the corner against the pandemic. Speaking at the Malaysian Economic Summit 2022 organised by the KSI Strategic Institute for Asia Pacific, he said there were a number of factors to be optimistic about the country's growth outlook and most importantly, it was transitioning to the endemic phase with the relaxation of pandemic control measures and reopening of international borders. The endemic phase is likely to contribute to the

revival of Malaysia's tourism industry which supports 3.5 million jobs. The high vaccination rate with close to 80 per cent of the population being vaccinated with two doses is another important factor. This compares favourably against Asean's rate of 60 per cent. A sound government policy has provided economic relief and support for the people and businesses, including employment incentives, cash transfers and subsidies, which resulted in a significant decline in the unemployment rate from a peak of 5.3 per cent in May 2020 to 4.1 per cent in May 2022. Being also chairman of Economic Club of Kuala Lumpur (ECKL) Advisory Council, he said that Bank Negara Malaysia has forecast that Malaysia's economic growth to be between 5.3 per cent and 6.3 per cent in 2022 while the World Bank projected the economy to grow by 5.5 per cent. However, it is important to note that these forecasts have been downgraded, underscoring the uncertainties within and beyond the country. If there is upside, there will be downside and we must consider domestic and global challenges that will affect the Malaysian economy. Geopolitical risks threatened Malaysia's recovery whereby the conflict in Ukraine and the economic sanctions on Russia have created uncertainties and they had exacerbated the supply shocks in commodities such as crude oil, natural gas, wheat and sunflower oil, hence, driven up the prices of food commodities. Malaysia also had to contend with these inflationary pressures where the annual Consumer Price Index went from -1.2 per cent in 2020 to 2.5 per cent in 2021. The inflation rate will continue to rise this year and has been driven by significant increases in transportation and food costs. Food prices have increased between 3.6 per cent and 4.0 per cent in the first quarter of this year. Fortunately, the government's fuel subsidy has kept a lid on further increases on fuel cost. However, the fuel subsidy is a double-edged sword because while it keeps inflation down, the government's fiscal space will shrink. Another major domestic issue is the political uncertainties that have afflicted the country since the last general election. The economic boost from the transition to the endemic phase may be neutralised by the adverse global developments such as the conflict in Ukraine, China's Covid-19 lockdown and the inflationary pressures. Therefore, the short-term goal of economic

stabilisation should focus on supporting domestic demand and addressing the impact of imported inflation from weaker exchange rates and higher fuel prices. He was cautiously optimistic that Malaysia will be able to overcome these challenges if Malaysians were to come together, be constructive and do what we can in our respective roles since the country has weathered similar crises in the past. Obviously, there were different factors that will require different sets of solutions which means we cannot rest our laurels and must be persistent and focused.

EYE ON THE MARKETS

This week, on Friday (17 June), the Ringgit opened at 4.3975 against the USD from 4.4110 on Monday (13 June). Meanwhile, the Ringgit was 3.1752 to the Sing Dollar on Friday (17 June). On Monday (13 June), the FBM KLCI opened at 1483.76. As at Friday (17 June) 10:00am, the FBM KLCI is down 31.88 points for the week at 1451.88. Over in US, the overnight Dow Jones Industrial Average closed down 741.46 points (-2.42%) to 29,927.07 whilst the NASDAQ shed 453.06 points (-4.08%) to 10,646.10.



KLCI 1 Year Chart

Over 5 trading days



ShareInvestor WebPro (www.shareinvestor.com/my)

1. Price > Stock Prices
2. Select Market: NASDAQ / NYSE / IDX / SET / HKEX / SGX (One bourse at a time)
3. select Stocks Tab
4. select Ranking Top Gainers or Top Losers (Over 5 Trading Days)
5. Mouse over Column Layout > select Edit Customs > select Name > select Last Done Price > select 5 Days Change > select 52 Weeks High > select 52 Weeks Low > Mouse Over Column Layout > select Custom

NASDAQ (USD)

Top Gainers

Name	Last Done	Change Over 5 Days	52 Weeks High	52 Weeks Low
ATRION CORP	630.890	+22.890	805.620	579.960
ZHONG YANG FINL GROUP LTD	38.700	+17.370	33.150	12.600
BELITE BIO INC SPON ADS EACH REP 1 ORD SHS	28.000	+11.710	28.700	8.800
DAY ONE BIOPHARMACEUTICALS INC	15.050	+7.930	28.699	5.440
DISTRIBUTION SOLUTIONS GROUP I	54.090	+7.630	58.150	33.920

Top Losers

Name	Last Done	Change Over 5 Days	52 Weeks High	52 Weeks Low
BOOKING HOLDINGS INC	1,846.240	-431.600	2,715.660	1,796.450
MERCADOLIBRE INC	612.700	-135.705	1,970.130	600.685
ALPHABET INC	2,120.670	-102.560	3,030.932	2,037.694
ALPHABET INC	2,132.720	-95.830	3,042.000	2,044.160
POOL CORPORATION	332.180	-84.210	582.265	337.290

NYSE (USD)

Top Gainers

Name	Last Done	Change Over 5 Days	52 Weeks High	52 Weeks Low
FEDEX CORP	225.310	+8.310	304.590	192.820
NEW ORIENTAL ED & TECHNOLOGY GP INC SPON ADS EA REP 10 ORD SHS(POST REV SPLT)	22.020	+7.300	91.200	8.400
BOEING CO	133.360	+6.360	252.300	113.020
PENNSYLVANIA REAL ESTAT INVES TRUST	5.320	+4.994	2.790	0.259
WEIS MARKETS INC	76.420	+2.670	86.755	50.780

Top Losers

Name	Last Done	Change Over 5 Days	52 Weeks High	52 Weeks Low
BERKSHIRE HATHAWAY INC	403,971.000	-35,809.010	544,389.260	400,669.020
NVR INC	3,670.000	-668.020	5,982.445	3,829.990
TEXAS PACIFIC LAND CORPORATION	1,552.060	-167.390	1,756.000	946.290
CABLE ONE INC	1,167.340	-145.630	2,136.135	1,049.810
METTLER-TOLEDO INTERNATIONAL INC	1,118.520	-136.020	1,714.750	1,136.370

IDX (Rupiah)

Top Gainers

Name	Last Done	Change Over 5 Days	52 Weeks High	52 Weeks Low
BAYAN RESOURCES TBK.	64,375.000	+5475.000	69,000.000	13,350.000
RODA VIVATEX TBK	8,200.000	+1350.000	9,300.000	6,500.000
INDO-RAMA SYNTHETICS TBK.	11,900.000	+1100.000	13,625.000	3,650.000
BANK JAGO TBK.	9,825.000	+925.000	19,500.000	6,600.000
INDOSTERLING TECHNOMEDIA TBK.	6,700.000	+900.000	10,200.000	2,640.000

Top Losers

Name	Last Done	Change Over 5 Days	52 Weeks High	52 Weeks Low
DCI INDONESIA TBK.	32,500.000	-2,500.000	59,000.000	32,500.000
INDO TAMBANGRAYA MEGAH TBK.	32,600.000	-2,400.000	37,000.000	13,525.000
UNITED TRACTORS TBK.	30,000.000	-2,400.000	33,375.000	18,525.000
ASTRA AGRO LESTARI TBK.	10,175.000	-1,300.000	13,400.000	7,275.000
NFC INDONESIA TBK.	7,800.000	-1,200.000	13,900.000	4,460.000

SET (Thai Baht)

Top Gainers

Name	Last Done	Change Over 5 Days	52 Weeks High	52 Weeks Low
BBL	135.000	+7.500	149.000	100.000
KWC	254.000	+6.000	283.000	233.000
INSURE	186.500	+4.500	287.000	22.000
BLA	43.750	+3.500	48.000	24.700
DTCI	34.000	+3.000	38.000	21.000

Top Losers

Name	Last Done	Change Over 5 Days	52 Weeks High	52 Weeks Low
JTS	195.000	-92.000	594.000	22.100
DELTA	302.000	-17.000	790.000	302.000
ADVANC	199.500	-12.500	242.000	169.000
CPH	31.000	-11.750	47.250	3.100
SCC	355.000	-11.000	440.000	355.000

HKEX (HKD)

Top Gainers

Name	Last Done	Change Over 5 Days	52 Weeks High	52 Weeks Low
KOOLEARN TECHNOLOGY HLDG LTD	28.600	+24.130	33.150	2.840
LI AUTO INC	123.600	+6.400	145.000	67.300
ANGELALIGN TECHNOLOGY INC	148.700	+5.700	471.000	100.000
NEW ORIENTAL ED & TECHNOLOGY GP INC	17.520	+4.500	67.700	6.620
HUITONGDA NETWORK CO LTD	51.300	+4.400	55.000	37.000

Top Losers

Name	Last Done	Change Over 5 Days	52 Weeks High	52 Weeks Low
BILIBILI INC	202.600	-30.600	1,052.000	125.000
YUM CHINA HOLDINGS INC	320.400	-29.000	523.500	281.000
TENCENT HOLDINGS LIMITED	367.600	-27.200	589.960	297.000
ZTO EXPRESS (CAYMAN) INC	189.700	-24.100	261.200	141.200
TRIP COM GROUP LTD	168.000	-23.000	293.800	123.300

SGX (SGD)

Top Gainers

Name	Last Done	Change Over 5 Days	52 Weeks High	52 Weeks Low
COMBINE WILL	0.905	+0.110	1.010	0.790
DIGILIFE TECH	2.050	+0.110	2.300	1.140
ISETAN	3.860	+0.110	4.780	3.320
SOUTHERN PKG	0.550	+0.090	0.630	0.340
SOUTHERNALLIANCE	0.720	+0.070	1.300	0.600

Top Losers

Name	Last Done	Change Over 5 Days	52 Weeks High	52 Weeks Low
JMH USD	52.500	-6.390	65.510	49.980
UOB	26.980	-1.070	33.330	25.280
NIO INC. USD OV	19.470	-0.860	21.170	14.200
JARDINE C&C	31.110	-0.690	32.000	18.930
IFAST	4.080	-0.620	10.100	4.050

SEA OF RED



Pankaj C Kumar

Pankaj is a former CIO and Head of Research, presently focused on economic, market and corporate analyses. The views expressed here are entirely the writer's own.

Dilemma – How many rate hikes can the US economy take to tame inflationary pressure but without taking the economy into a recession? Stuck between a rock and a hard place, the US Federal Open Market Committee (FOMC), which met this week, raised the Fed Fund Rate (FFR) by 75bps to 1.5%-1.75% as the red-hot inflation prints forced the Fed's hands to be more aggressive. At the same time, the Fed also revised its dot-plot chart and now calls for the US FFR to hit 3.375%, the mid-range of the 3.25%-3.5% FFR by the end of the year, before rising to 3.75% by the end of 2023. In effect, the Fed is looking at another 175bps for the remaining four scheduled FOMC meetings for this year and another 25-50bps hike in 2023. The Fed also guided that the July rate hike to be between 50-75bps, before easing the pace of increase in the subsequent FOMC meetings.

In economic data projections, the Fed raised its inflation outlook with Consumer Price Index (CPI) now forecasted at 5.2% against 4.3% predicted in March. However, the Fed believes that inflation will be contained next year and thereafter and hence cut its 2023 and 2024 inflation forecast to 2.6% and 2.2% from 2.7% and 2.3% respectively. The Fed also revised GDP growth estimates this year to just 1.7% from 2.8% estimated earlier while the forecast for 2023 and 2024 was revised

down to 1.7% and 1.9% from the previous estimate of 2.2% and 2.0% respectively made in March 2022.

ECONOMY

Out of the US, the May inflation data came in higher than expected as the headline and core CPI surged 8.6% and 6.0% y-o-y, ahead of the market estimate of 8.3% and 5.9% gain respectively. The May inflation data was the highest reading since December 1981. Meanwhile, US consumer sentiment collapsed as the preliminary University of Michigan Consumer Sentiment Index for June fell to just 50.2 from 58.4 in May. In other news, the May Producers Price Index (PPI) came in marginally better than expected, rising by 10.8% y-o-y against the consensus expectations of a 10.9% increase. In other news, the May Retail Sales data was weak with a contraction of 0.3% m-o-m against the market estimate of a 0.1% increase.

However, inflation data out of China is less of a worry for now as the May CPI rose by 2.1% y-o-y, unchanged from the preceding month, while the PPI saw a smaller y-o-y increase of 6.4% in May against the 8% print in April. Other economic data out of China were stronger, coming in ahead of expectations. Retail Sales fell by 6.7% y-o-y, which was better than the forecast of a 7.1% contraction, Industrial Production improved by 0.7% y-o-y against a forecast of a 0.7% drop while the cumulative Fixed Asset Investments increased by 6.2% y-o-y compared with the consensus estimate of a 6% gain.

Joining the rate hike cohort among global central banks, the Swiss National Bank (SNB) raised its benchmark interest rates by 50bps to -0.25% – the first time since 2007 that the SNB has raised rates, while Hong Kong Monetary Authority moved rates 75bsp to 2.00%, mirroring the Fed's move to maintain the HK Dollar currency peg with the US Dollars.

Locally, the April Industrial Production Index (IPI) increased at a modest pace of 4.6% y-o-y, slower than the preceding month's increase of 5.0% as the Manufacturing Index rose by 6.2% y-o-y while the Electricity Index gained 1.5% y-o-y but the Mining Index contracted 0.1% y-o-y. Meanwhile, Malaysia's Manufacturing Sales expanded by 13.2% y-o-y

to hit RM147.9bil in April, mainly driven by a 21.9% y-o-y increase in the Electrical and Electronics sector, while the Food, Beverage, and Tobacco sector jumped 14.9% y-o-y.

In other news, Malaysia's palm oil stocks for May fell by 7.4% m-o-m and 3.0% y-o-y to 1.52mil metric tonnes (MT) as production was little changed on a month-to-month basis. Due to the ban on palm oil by Indonesia, Malaysia benefited from a higher off-take as exports increased by 26.7% m-o-m and 7.1% y-o-y to reach 1.36mil MT. For the first five months of 2022, Malaysia's crude palm oil production is down by 0.5% y-o-y to 6.72mil MT, while exports have improved by 5.9% to 5.98mil MT. For the automotive sector, the government is said to be considering extending the 6% Sales and Service Tax (SST) exemption by another six months as the current tax exemption is set to expire at the end of June, although such a move may cost the government as much as RM2.5bil.

Meanwhile, according to the Malaysian Investment Development Authority, total approved investments for the 1Q of 2022 fell by 46.9% to RM42.8bil involving some 910 projects. 70.1% of the total approval was related to the manufacturing sector, while the services sector accounted for 29.7%. Some 65% or RM27.8bil of the approved investments were Foreign Direct Investments (FDI) while domestic direct investments stood at RM15bil or 35% of the total. In other news, Malaysia's ranking in the 2022 International Institute for Management Development (IMD) World Competitiveness Ranking dropped seven notches to 32nd from 25th in the preceding year. Neighbours, Thailand and Indonesia too fell in their ranking to 33rd and 44th from 28th and 37th previously, while Singapore improved to the 3rd globally from the 5th position in 2021.

CORPORATE

In contract news, Coastal Contracts won a charter contract for a vessel and the extension of an existing charter contract worth RM252mil. Nestcon has accepted a letter of award from Nescaya Etika SB to undertake the construction and completion of the main building and

infrastructure works of a 38-storey building in Kuala Lumpur valued at RM118mil. GFM Services won a RM367.2mil 5-year contract from the Jabatan Kerja Raya to provide facilities management services for Istana Negara, Kuala Lumpur, while Kelington Group won a RM114 million contract to build a semiconductor manufacturing building in Johor.

In other corporate news, Cahya Mata Sarawak (CMS) agreed to dispose of its entire 25% stake in OM Materials (Sarawak) and OM Materials (Samalaju) to OM Materials (S) Pte Ltd for US\$120mil or RM526.6mil. CMS is expected to recognize a gain on disposal amounting to RM149mil or 13.9 sen per share from the sale of the two associated companies. Meanwhile, CTOS Digital, which owns a 19.23% stake in RAM Holdings, is expected to make a general offer to acquire the remaining shares it does not already own to raise its stake in the credit rating agency.

EQUITY

Despite the rebound on Wednesday after the Fed raised benchmark rates by 75bps, the US markets were major casualties this week as the three main indices fell by between 6.8% and 8.2%. Except for a 1.4% gain on the Shanghai Composite Index, the rest of the global markets were in the sea of red the past week with losses ranging from 1.8% to 6.9% on the S&P BSE SENSEX Index. Over on Bursa Malaysia, the market closed well below the 1,500 mark as the KLCI fell by another 36.94 pts or 2.4% to close at 1,472.77 pts. For the week ended June 15, local institutions and retail market participants sustained their net buying interest with a higher net inflow of RM381.8mil and RM290.5mil respectively, while foreigners' net selling pressure intensified with an outflow of RM672.3mil.

EYE ON WEEK AHEAD

Locally, later today, the Department of Statistics will be releasing Malaysia's May External Trade Statistics as well

as statistics on Malaysia's FDI. On Monday, June 20, the ball falls on the People's Bank of China (PBoC), which will decide on its domestic key benchmark rates. The following day, the May US Existing Home Sales data is expected to be out, with the market looking at a slight m-o-m dip of 0.2%. Next up will be the UK CPI data for May, which consensus expect the headline inflation to jump 9.8% y-o-y. On Wednesday, Bank Negara Malaysia will be releasing Malaysia's International Reserves position as at June 15, while on Thursday, June 23, the S&P Global Flash Eurozone Composite Index and the S&P Global Flash Manufacturing Index for June are due, with both data expected to show slight weakness at 54.2 and 54.5 against 54.8 and 54.6 in May respectively.

Pankaj is a former CIO and Head of Research, presently focused on economic, market and corporate analyses. The views expressed here are entirely the writer's own.



Learn how to identify Hot Stocks using Technical Analysis (TA) and Fundamental Analysis (FA)

SIGN UP FOR Invest NOW IT'S FREE!!!

[Click here](#)

Scan me



Via email, every Friday.

Get market moving news and analyses. Regular columns include **Behind The Action** and **From The Observer**

- **Leaderboard** • **Shariah Hot Stocks** • **Shariah Momentum Up Stocks** • **Non Shariah Hot Stocks** • **Up Trending Stocks** • **Growth Stocks** • **Dividend Stocks** • **Long Companies** • **Insider Activity** • **Investor Relations** • **Regional Markets**



IS THERE LIFE AFTER PN17?



Devanesan
Evanson

**Chief Executive
Officer, Minority
Shareholders Watch
Group**

In view of the stigma attached to it, the first question that probably crosses the mind of minority shareholders whose counters have triggered the Practice Note 17 (PN17) criteria is whether to take a cut-loss route, to average down or to continue holding on to the stock in anticipation of a share price rebound. Majority of the PN17 companies tend to be companies with poor fundamentals or are speculative in nature. Upon proper scrutiny, more often than not, these companies are usually poorly managed or do not have good track records. Based on the criteria of triggering PN17 classification, it can be deduced that majority of the affected companies would have earlier reported massive losses. This will also be evident from the statutory audit of their annual financial statements by appointed external auditors. In certain cases, these losses are due to impairments carried out on certain assets. This includes trade receivables, inventories, or even assets or investments carried in the books which perhaps do not reflect the current economic value or are unrecoverable (Source: Pankaj C. Kumar,

“Is PN17 an End-Game?”, StarBiz, 5 February 2022). Having said that, operation-wise, a company, too, could fall into PN17 if losses in a given year are so huge that it could impact the shareholders’ equity and trigger the Para 2.1(a) of PN17 or GN3 as the case may be. Moreover, auditors can also be instrumental in determining the trigger points as both Para 2.1(d) and Para 2.1(e) of PN17 and Para 2.1(f) and Para 2.1(g) of GN3 are related to the opinion of the auditor on the financial statements that are presented.

TRIGGERING PN17 CLASSIFICATION

According to Bursa Malaysia Securities Bhd’s latest revision of Criteria and Obligations of PN17 Issuers (latest revision on 1 January 2022), PN17 is accorded to listed issuers who trigger any one or more of the following six criteria:

- Shareholders’ equity on a consolidated basis is 25% or less of the share capital & is less than RM40 million
- Receivers/managers have been appointed over the asset of the listed issuer/its subsidiary/associated company which asset accounts for at least 50% of the total assets employed on a consolidated basis
- A winding up of a listed issuer’s subsidiary/associated company which accounts for at least 50% of the total assets employed on a consolidated basis
- The auditors have expressed an adverse or disclaimer opinion in the listed issuer’s latest audited financial statements
- The auditors have highlighted a material uncertainty related to going concern or expressed a qualification on the listed issuer’s ability to continue as a going concern in the company’s latest audited financial statements and the shareholders’ equity on a consolidated basis is 50% or less of share capital of the listed issuer

- A default in payment by a listed issuer, its major subsidiary/major associated company as announced by the company pursuant to Para 9.19A of the Listing Requirements and the listed issuer is unable to provide a solvency declaration to the exchange

ESCAPE ROUTE FOR THE MINORITY SHAREHOLDERS

Interestingly, some investors are unaware that they are holding on to counters that have been classified under PN17 out of their own ignorance, i.e., their failure to keep track of the companies' they invest in. Worse still, some investors do not even notice that these companies have been delisted. Perhaps this is what distinguishes an informed investor from an ordinary investor. The former will keep tabs on the performance of their stock. Once they discover that the companies' they have invested in are experiencing declining performance or showing early signs of financial difficulties, they will tend to make quick decisions. Usually, they will cut their losses. Unfortunately, most investors believe that "what comes down will go up again one day" (in contrast to "what goes up will come down"). Eventually when they are motivated enough to cut losses, the companies are at the point of no return and on the brink of being delisted. Especially during the current challenging times, investors must ensure that they conduct pulse-checks on their investments more frequently than during boom time. A full medical check-up will be better. In times of economic uncertainties, blue chip stocks tend to better weather stock market turbulence compared to their low-liner counterparts simply because they are more likely to be better managed or have ample cash flow to keep them afloat – the so called war chest. Adding to this risk of business survival is the unbecoming trend of some business owners getting less committed to salvaging their business when they find their companies labelled as PN 17. They might easily give up their businesses after encountering some financial distress. If they discover that the loans amount is higher than the value of their assets – or if they foresee little prospect of recovery – they have no qualm of giving up their business by letting their companies fall into PN17 and eventually go bankrupt. Some

indulge in insider trading and exit at higher prices earlier – well before the company is delisted or wound up. Then there is this Cockroach Theory whereby when a company announces some bad news to the public – i.e., a default in loan repayments, accounting issues or a delay in releasing their financial results – there are likely to be more bad news in the pipeline. The analogy is that when we come across one cockroach in our cabinet, there tends to be many more cockroaches hiding at the back of that cabinet. Even if some companies deserved to be credited for endeavouring to escape the PN17 stranglehold by giving their utmost best to regularise their businesses, not all business owners have the stamina to truly mount a rescue mission. The search for a white knight can entail countless hours of ‘humiliating’ negotiations. Even if PN17 companies managed to rope in a white knight, the submission, approval, and eventual implementation of the regularisation plans would likely take years to complete.

Set against such harsh reality, minority shareholders should decide whether to cut losses, average down or simply hold on to their PN17 stock.

This article appeared in the The Observer, a weekly newsletter published by The Minority Shareholders Watch Group (MSWG) and reproduced here with their permission. Do follow MSWG's Twitter account at @MSWGMalaysia and share your thought on their tweets from time to time.

SHAREINVESTOR WEBPRO

Stock Market Data
At Your Fingertips

Powerful browser-based market analytics platform.
Access from anywhere



Intrinsic Value
Calculator



Consensus
Estimates



C2 Charts
(Customizable &
Comprehensive)



Advance
Market
Screener



Ownership
Tracker

click here to start your
9 Day free trial

DEFINITION: Insider Activity shows the trades made by substantial shareholders or directors of the company. Purchases by the directors and company share buyback may indicate the share price is undervalued and brings confidence to the price trend of the share price.



ShareInvestor WebPro > Fundamental > Insider Trades > click Search tab > Select Bursa > click Stock name > scroll up and leave at <Select Counter> Type Date Range for Announcement Date > click Search

Notice Period is 05 June 2022 - 11 June 2022

Effective Change Date	Stock Name	Buyer/ Seller Name [Classification]	Bought / (Sold) ['000]	No. of Shares After Trade ['000]	
			Total	Total	% Held
07 Jun 2022 - 08 Jun 2022	3A	MR TEO KWEE HOCK [SSH]	-223	49,263	10.049
03 Jun 2022 - 07 Jun 2022	ABLEGLOB	MR NG KENG HOE (HUANG QINGHE) [SSH]	198	37,146	12.078
03 Jun 2022 - 07 Jun 2022	ABLEGLOB	MR NG KENG HOE (HUANG QINGHE) [DIR/CEO]	198	37,146	12.077
03 Jun 2022 - 03 Jun 2022	ABMB	EMPLOYEES PROVIDENT FUND BOARD [SSH]	-166	175,443	11.333
02 Jun 2022 - 02 Jun 2022	ABMB	EMPLOYEES PROVIDENT FUND BOARD [SSH]	343	175,609	11.343
01 Jun 2022 - 01 Jun 2022	ABMB	EMPLOYEES PROVIDENT FUND BOARD [SSH]	466	175,266	11.321
07 Jun 2022 - 07 Jun 2022	AEON	EMPLOYEES PROVIDENT FUND BOARD [SSH]	759	145,613	10.371
03 Jun 2022 - 03 Jun 2022	AEON	EMPLOYEES PROVIDENT FUND BOARD [SSH]	564	144,854	10.317
02 Jun 2022 - 02 Jun 2022	AEON	EMPLOYEES PROVIDENT FUND BOARD [SSH]	335	144,290	10.277
01 Jun 2022 - 01 Jun 2022	AEON	EMPLOYEES PROVIDENT FUND BOARD [SSH]	278	143,955	10.253
02 Jun 2022 - 02 Jun 2022	AGES	DATO' SRI LIEW KOK LEONG [DIR/CEO]	18,280	48,500	15.562
02 Jun 2022 - 02 Jun 2022	AGES	DATO' SRI LIEW KOK LEONG [SSH]	18,280	48,500	15.562
07 Jun 2022 - 07 Jun 2022	AIRPORT	EMPLOYEES PROVIDENT FUND BOARD [SSH]	235	253,282	15.265
02 Jun 2022 - 02 Jun 2022	AMBANK	EMPLOYEES PROVIDENT FUND BOARD [SSH]	-300	317,761	9.589
01 Jun 2022 - 01 Jun 2022	AMBANK	EMPLOYEES PROVIDENT FUND BOARD [SSH]	-624	318,061	9.598
02 Jun 2022 - 02 Jun 2022	AMEDIA	MR TAN CHIA HONG @ GAN CHIA HONG [DIR/CEO]	-188	49,164	15.792
02 Jun 2022 - 02 Jun 2022	AMEDIA	MR TAN CHIA HONG @ GAN CHIA HONG [DIR/CEO]	-1,163	48,189	15.479
02 Jun 2022 - 07 Jun 2022	ANCOMNY	DATO' SIEW KA WEI [SSH]	197	184,098	21.432
02 Jun 2022 - 07 Jun 2022	ANCOMNY	DATO' SIEW KA WEI [DIR/CEO]	197	184,098	21.432
07 Jun 2022 - 07 Jun 2022	ANCOMNY	CHAN THYE SENG [DIR/CEO]	31,820	47,730	5.557
07 Jun 2022 - 07 Jun 2022	ANCOMNY	PACIFIC & ORIENT BERHAD [SSH]	31,820	47,730	5.557
07 Jun 2022 - 07 Jun 2022	ANCOMNY	CHAN THYE SENG [SSH]	31,820	47,730	5.557
07 Jun 2022 - 07 Jun 2022	ANCOMNY	CHAN THYE SENG [DIR/CEO]	5,193	7,789	4.903
01 Jun 2022 - 01 Jun 2022	APM	EMPLOYEES PROVIDENT FUND BOARD [SSH]	-0.9	11,025	5.639
07 Jun 2022 - 07 Jun 2022	ASIAFLE	FMR LLC [SSH]	-6	12,862	6.604
07 Jun 2022 - 07 Jun 2022	ASIAFLE	ABIGAIL P. JOHNSON [SSH]	-6	12,862	6.604
07 Jun 2022 - 07 Jun 2022	ASIAFLE	FIDELITY MANAGEMENT & RESEARCH COMPANY LLC [SSH]	-6	12,164	6.246
07 Jun 2022 - 07 Jun 2022	AXIATA	EMPLOYEES PROVIDENT FUND BOARD [SSH]	-443	1,554,652	16.941
03 Jun 2022 - 03 Jun 2022	AXIATA	EMPLOYEES PROVIDENT FUND BOARD [SSH]	-161	1,555,095	16.946
02 Jun 2022 - 02 Jun 2022	AXIATA	EMPLOYEES PROVIDENT FUND BOARD [SSH]	2,668	1,555,256	16.948
07 Jun 2022 - 07 Jun 2022	AXREIT	EMPLOYEES PROVIDENT FUND BOARD [SSH]	132	261,923	16.024
03 Jun 2022 - 03 Jun 2022	AXREIT	EMPLOYEES PROVIDENT FUND BOARD [SSH]	-33	261,791	16.016
02 Jun 2022 - 02 Jun 2022	AXREIT	EMPLOYEES PROVIDENT FUND BOARD [SSH]	256	261,824	16.018
07 Jun 2022 - 07 Jun 2022	BAUTO	PRUDENTIAL PLC [SSH]	-166	60,259	5.185
02 Jun 2022 - 03 Jun 2022	BAUTO	DATO' AMER HAMZAH BIN AHMAD [SSH]	50	171,617	14.766
02 Jun 2022 - 03 Jun 2022	BAUTO	DATO' SRI YEOH CHOON SAN [DIR/CEO]	50	170,704	14.688
02 Jun 2022 - 03 Jun 2022	BAUTO	DATO' SRI YEOH CHOON SAN [SSH]	50	170,704	14.688
02 Jun 2022 - 03 Jun 2022	BAUTO	DATO' LEE KOK CHUAN [DIR/CEO]	50	170,494	14.67
02 Jun 2022 - 03 Jun 2022	BAUTO	DATO' LEE KOK CHUAN [SSH]	50	170,494	14.67
02 Jun 2022 - 03 Jun 2022	BAUTO	DYNAMIC MILESTONE SDN BHD [SSH]	50	167,173	14.384
07 Jun 2022 - 07 Jun 2022	BIMB	EMPLOYEES PROVIDENT FUND BOARD [SSH]	64	284,863	13.217
03 Jun 2022 - 03 Jun 2022	BIMB	EMPLOYEES PROVIDENT FUND BOARD [SSH]	383	284,799	13.214
02 Jun 2022 - 02 Jun 2022	BIMB	EMPLOYEES PROVIDENT FUND BOARD [SSH]	500	284,416	13.196
01 Jun 2022 - 01 Jun 2022	BIMB	EMPLOYEES PROVIDENT FUND BOARD [SSH]	350	283,916	13.173
08 Jun 2022 - 08 Jun 2022	BIOHLDG-PA	MR HON TIAN [DIR/CEO]	34,000	236,362	51.712
02 Jun 2022 - 02 Jun 2022	BOILERM	DR CHIA SONG KUN [DIR/CEO]	300	270,236	52.37
02 Jun 2022 - 02 Jun 2022	BOILERM	DR CHIA SONG KUN [SSH]	300	270,236	52.37
02 Jun 2022 - 02 Jun 2022	BOILERM	QL GREEN RESOURCES SDN. BHD. [SSH]	300	269,836	52.29
02 Jun 2022 - 02 Jun 2022	BOILERM	CBG (L) FOUNDATION [SSH]	300	269,836	52.29
02 Jun 2022 - 02 Jun 2022	BOILERM	QL RESOURCES BERHAD [SSH]	300	269,836	52.29
02 Jun 2022 - 02 Jun 2022	BOILERM	CBG (L) PTE LTD [SSH]	300	269,836	52.29
07 Jun 2022 - 07 Jun 2022	BURSA	EMPLOYEES PROVIDENT FUND BOARD [SSH]	32	77,210	9.54
03 Jun 2022 - 03 Jun 2022	BURSA	EMPLOYEES PROVIDENT FUND BOARD [SSH]	100	77,178	9.536
02 Jun 2022 - 02 Jun 2022	CAELY	DATO' WIRA NG CHUN HAU [SSH]	-7,500	46,027	17.823
08 Jun 2022 - 08 Jun 2022	CCB	JARDINE CYCLE & CARRIAGE LIMITED [SSH]	140	90,591	89.921
08 Jun 2022 - 08 Jun 2022	CCB	JMH INVESTMENTS LIMITED [SSH]	140	90,591	89.921
08 Jun 2022 - 08 Jun 2022	CCB	JARDINE MATHESON HOLDINGS LIMITED [SSH]	140	90,591	89.921
08 Jun 2022 - 08 Jun 2022	CCB	JARDINE STRATEGIC SINGAPORE PTE LTD [SSH]	140	90,591	89.921
08 Jun 2022 - 08 Jun 2022	CCB	JSH ASIAN HOLDINGS LIMITED [SSH]	140	90,591	89.921
08 Jun 2022 - 08 Jun 2022	CCB	JARDINE STRATEGIC LIMITED [SSH]	140	90,591	89.921
07 Jun 2022 - 07 Jun 2022	CCB	JMH INVESTMENTS LIMITED [SSH]	165	90,451	89.782
07 Jun 2022 - 07 Jun 2022	CCB	JARDINE MATHESON HOLDINGS LIMITED [SSH]	165	90,451	89.782
07 Jun 2022 - 07 Jun 2022	CCB	JARDINE STRATEGIC SINGAPORE PTE LTD [SSH]	165	90,451	89.782
07 Jun 2022 - 07 Jun 2022	CCB	JARDINE CYCLE & CARRIAGE LIMITED [SSH]	165	90,451	89.782
07 Jun 2022 - 07 Jun 2022	CCB	JSH ASIAN HOLDINGS LIMITED [SSH]	165	90,451	89.782
07 Jun 2022 - 07 Jun 2022	CCB	JARDINE STRATEGIC LIMITED [SSH]	165	90,451	89.782
08 Jun 2022 - 08 Jun 2022	CHHB	PUAN SRI TAN BEE HONG [SSH]	1,000	185,415	62.223

Notice Period is 05 June 2022 - 11 June 2022

Effective Change Date	Stock Name	Buyer/ Seller Name [Classification]	Bought / (Sold) ['000]	No. of Shares After Trade ['000]	
			Total	Total	% Held
08 Jun 2022 - 08 Jun 2022	CHHB	TAN SRI LEE KIM TIONG @ LEE KIM YEW [DIR/CEO]	1,000	185,415	62.222
08 Jun 2022 - 08 Jun 2022	CHHB	TAN SRI LEE KIM TIONG @ LEE KIM YEW [SSH]	1,000	185,415	62.222
08 Jun 2022 - 08 Jun 2022	CHHB	PUAN SRI TAN BEE HONG [DIR/CEO]	1,000	185,415	62.223
08 Jun 2022 - 08 Jun 2022	CHHB	PUAN SRI TAN BEE HONG [SSH]	-1,000	90,956	69.254
08 Jun 2022 - 08 Jun 2022	CHHB	PUAN SRI TAN BEE HONG [DIR/CEO]	-1,000	90,956	69.254
08 Jun 2022 - 08 Jun 2022	CHHB	TAN SRI LEE KIM TIONG @ LEE KIM YEW [SSH]	-1,000	67,445	51.347
08 Jun 2022 - 08 Jun 2022	CHHB	TAN SRI LEE KIM TIONG @ LEE KIM YEW [DIR/CEO]	-1,000	67,445	51.347
07 Jun 2022 - 07 Jun 2022	CHINHIN	MR CHIAU HAW CHOOH [SSH]	69	375,411	42.434
07 Jun 2022 - 07 Jun 2022	CHINHIN	MR CHIAU HAW CHOOH [DIR/CEO]	69	375,411	42.434
09 Jun 2022 - 09 Jun 2022	CHUAN	DATO LIM KHOON HENG [DIR/CEO]	13,776	48,780	28.92
09 Jun 2022 - 09 Jun 2022	CHUAN	DATO DATO' LIM KHOON HENG [SSH]	13,776	48,780	28.92
08 Jun 2022 - 08 Jun 2022	CIMB	KUMPULAN WANG PERSARAAN (DIPERBADANKAN) [SSH]	-172	698,396	6.67
07 Jun 2022 - 07 Jun 2022	CIMB	EMPLOYEES PROVIDENT FUND BOARD [SSH]	98	1,709,508	16.32
03 Jun 2022 - 03 Jun 2022	CIMB	EMPLOYEES PROVIDENT FUND BOARD [SSH]	-2,670	1,709,411	16.32
02 Jun 2022 - 02 Jun 2022	CIMB	EMPLOYEES PROVIDENT FUND BOARD [SSH]	-2,870	1,712,080	16.35
01 Jun 2022 - 01 Jun 2022	CIMB	EMPLOYEES PROVIDENT FUND BOARD [SSH]	-1,754	1,713,830	16.36
02 Jun 2022 - 02 Jun 2022	CIMB	KUMPULAN WANG PERSARAAN (DIPERBADANKAN) [SSH]	-1,000	698,568	6.67
31 May 2022 - 31 May 2022	CIMB	EMPLOYEES PROVIDENT FUND BOARD [SSH]	-2,685	1,715,584	16.38
07 Jun 2022 - 09 Jun 2022	CRG	DATO' SRI CHIANG FONG YEE [DIR/CEO]	394	270,627	33.591
07 Jun 2022 - 09 Jun 2022	CRG	DATO' SRI CHIANG FONG YEE [SSH]	394	196,987	24.451
03 Jun 2022 - 03 Jun 2022	CRG	DATO' SRI CHIANG FONG YEE [DIR/CEO]	1,032	270,232	33.542
03 Jun 2022 - 03 Jun 2022	CRG	DATO' SRI CHIANG FONG YEE [SSH]	1,032	196,593	24.402
09 Jun 2022 - 09 Jun 2022	CYPARK	TAN SRI RAZALI BIN ISMAIL [DIR/CEO]	-2,450	22,835	3.878
07 Jun 2022 - 07 Jun 2022	DAYANG	URUSHARTA JAMAAH SDN. BHD. [SSH]	-474	93,486	8.075
03 Jun 2022 - 03 Jun 2022	DAYANG	URUSHARTA JAMAAH SDN. BHD. [SSH]	-730	93,960	8.116
02 Jun 2022 - 02 Jun 2022	DAYANG	URUSHARTA JAMAAH SDN. BHD. [SSH]	-208	94,690	8.179
08 Jun 2022 - 08 Jun 2022	DBHD	JOHOR CORPORATION [SSH]	2	272,386	83.355
08 Jun 2022 - 08 Jun 2022	DBHD	JLAND GROUP SDN. BHD. (FORMERLY KNOWN AS ABSOLUTE AMBIENT SDN. BHD.) [SSH]	2	228,422	69.901
07 Jun 2022 - 07 Jun 2022	DIGI	EMPLOYEE PROVIDENT FUND BOARD [SSH]	-520	1,164,191	14.974
03 Jun 2022 - 03 Jun 2022	DIGI	EMPLOYEE PROVIDENT FUND BOARD [SSH]	-524	1,164,711	14.98
03 Jun 2022 - 03 Jun 2022	DPHARMA	PERMODALAN NASIONAL BERHAD [SSH]	-1,022	410,268	43.084
03 Jun 2022 - 03 Jun 2022	DPHARMA	YAYASAN PELABURAN BUMIPUTRA [SSH]	-1,022	410,268	43.084
02 Jun 2022 - 02 Jun 2022	DPHARMA	PERMODALAN NASIONAL BERHAD [SSH]	-676	411,289	43.192
02 Jun 2022 - 02 Jun 2022	DPHARMA	YAYASAN PELABURAN BUMIPUTRA [SSH]	-676	411,289	43.192
07 Jun 2022 - 07 Jun 2022	DRBHCOC	EMPLOYEES PROVIDENT FUND BOARD [SSH]	-60	207,841	10.751
03 Jun 2022 - 03 Jun 2022	DRBHCOC	EMPLOYEES PROVIDENT FUND BOARD [SSH]	-292	207,900	10.754
02 Jun 2022 - 02 Jun 2022	DRBHCOC	EMPLOYEES PROVIDENT FUND BOARD [SSH]	-53	208,193	10.769
07 Jun 2022 - 07 Jun 2022	DSONIC	URUSHARTA JAMAAH SDN. BHD. [SSH]	-172	267,140	9.326
02 Jun 2022 - 02 Jun 2022	DUFU	LEE WEN-JUNG [SSH]	35	51,479	9.728
07 Jun 2022 - 08 Jun 2022	ECM	DATO LIM KIAN ONN [SSH]	2,000	193,260	40.269
07 Jun 2022 - 08 Jun 2022	ECM	DATO LIM KIAN ONN [DIR/CEO]	2,000	193,260	40.269
03 Jun 2022 - 03 Jun 2022	ECM	DATO LIM KIAN ONN [DIR/CEO]	379	191,260	39.852
03 Jun 2022 - 03 Jun 2022	ECM	DATO LIM KIAN ONN [SSH]	379	191,260	39.852
01 Jun 2022 - 02 Jun 2022	ECM	GARYNMA MY CAPITAL LIMITED [SSH]	4,456	76,711	15.984
01 Jun 2022 - 02 Jun 2022	ECM	JULIUS BAER TRUST COMPANY (SINGAPORE) LIMITED [SSH]	4,456	76,711	15.984
01 Jun 2022 - 02 Jun 2022	ECM	GARYNMA MY HOLDINGS LIMITED [SSH]	4,456	76,711	15.984
07 Jun 2022 - 07 Jun 2022	ECONBHD	EMPLOYEES PROVIDENT FUND BOARD [SSH]	-2,755	118,583	8.366
03 Jun 2022 - 03 Jun 2022	ECONBHD	EMPLOYEES PROVIDENT FUND BOARD [SSH]	-1,692	121,338	8.56
02 Jun 2022 - 02 Jun 2022	ECONBHD	EMPLOYEES PROVIDENT FUND BOARD [SSH]	-692	123,030	8.679
01 Jun 2022 - 01 Jun 2022	ECONBHD	EMPLOYEES PROVIDENT FUND BOARD [SSH]	-912	123,722	8.728
07 Jun 2022 - 07 Jun 2022	EG	DATO' KANG PANG KIANG [DIR/CEO]	1,960	56,262	14.104
07 Jun 2022 - 07 Jun 2022	EG	DATO' KANG PANG KIANG [SSH]	1,960	56,262	14.104
01 Jun 2022 - 02 Jun 2022	EITA	MR CHIA MAK HOOI [DIR/CEO]	200	500	0.192
07 Jun 2022 - 09 Jun 2022	ENGTGX	DATO' NG HOOK [SSH]	367	123,070	28.277
07 Jun 2022 - 09 Jun 2022	ENGTGX	DATIN YAP SENG KUAN [SSH]	367	123,070	28.277
07 Jun 2022 - 09 Jun 2022	ENGTGX	DATIN YAP SENG KUAN [DIR/CEO]	367	123,070	28.277
07 Jun 2022 - 09 Jun 2022	ENGTGX	DATO' NG HOOK [DIR/CEO]	367	123,070	28.277
02 Jun 2022 - 03 Jun 2022	ENGTGX	DATO' NG HOOK [SSH]	365	122,703	28.193
02 Jun 2022 - 03 Jun 2022	ENGTGX	DATIN YAP SENG KUAN [DIR/CEO]	365	122,703	28.193
02 Jun 2022 - 03 Jun 2022	ENGTGX	DATO' NG HOOK [DIR/CEO]	365	122,703	28.193
02 Jun 2022 - 03 Jun 2022	ENGTGX	DATIN YAP SENG KUAN [SSH]	365	122,703	28.193
07 Jun 2022 - 07 Jun 2022	ENG-TEX-WB	NG YIK SOON [DIR/CEO]	50	3,589	3.29
03 Jun 2022 - 03 Jun 2022	EURO	DATO' SRI LIM TECK BOON [SSH]	-4,000	469,453	58.543
03 Jun 2022 - 03 Jun 2022	EURO	DATO' SRI LIM TECK BOON [DIR/CEO]	-4,000	469,453	58.543
03 Jun 2022 - 03 Jun 2022	EURO	DATO' LIM CHAW TENG [SSH]	-4,000	454,662	56.698
03 Jun 2022 - 03 Jun 2022	EURO	S.P.A. FURNITURE (M) SDN. BHD. [SSH]	-4,000	454,662	56.698
02 Jun 2022 - 02 Jun 2022	F&N	EMPLOYEES PROVIDENT FUND BOARD [SSH]	10	47,531	12.959

Disclaimer: The Information in Insider Activity is extracted from www.shareinvestor.com/fundamental/insider_trades. The information on this page is provided as a service to readers. It does not constitute financial advice and/or any investment recommendations. We assume no liability for damages resulting from or arising out of the use of such information. Whilst every effort is made to ensure accuracy, the information presented is not the official record of shareholder filings. Readers are advised to read the original filings on the Bursa Malaysia website at www.bursamalaysia.com

PURNELL

ESCAPE II FORGED CARBON

PLAY



PURNELL ASIA
TEL.: +65.9817.3378

Notice Period is 05 June 2022 - 11 June 2022

Effective Change Date	Stock Name	Buyer/ Seller Name [Classification]	Bought / (Sold) ['000]	No. of Shares After Trade ['000]	
			Total	Total	% Held
01 Jun 2022 - 01 Jun 2022	F&N	EMPLOYEES PROVIDENT FUND BOARD [SSH]	205	46,844	12.772
08 Jun 2022 - 08 Jun 2022	FFB	MR LOI TUAN EE [SSH]	1,801	829,111	44.625
08 Jun 2022 - 08 Jun 2022	FFB	MR LOI TUAN EE [DIR/CEO]	1,801	829,111	44.625
02 Jun 2022 - 02 Jun 2022	FIAMMA	DATO' BAHAR BIN AHMAD [DIR/CEO]	-66	34	0.007
07 Jun 2022 - 09 Jun 2022	FLEXI	TAN KONG LEONG [SSH]	300	124,953	43.935
07 Jun 2022 - 09 Jun 2022	FLEXI	TAN KONG LEONG [DIR/CEO]	300	124,953	43.935
07 Jun 2022 - 09 Jun 2022	FLEXI	PHITCHAYA ARSANGKU [SSH]	300	124,953	43.935
02 Jun 2022 - 03 Jun 2022	FLEXI	TAN KONG LEONG [SSH]	200	124,653	43.83
02 Jun 2022 - 03 Jun 2022	FLEXI	TAN KONG LEONG [DIR/CEO]	200	124,653	43.83
02 Jun 2022 - 03 Jun 2022	FLEXI	PHITCHAYA ARSANGKU [SSH]	200	124,653	43.83
07 Jun 2022 - 08 Jun 2022	FPGROUP	DATO' ONG CHOON HENG [SSH]	50	187,050	34.619
07 Jun 2022 - 08 Jun 2022	FPGROUP	DATO' ONG CHOON HENG [DIR/CEO]	50	187,050	34.619
03 Jun 2022 - 03 Jun 2022	FPGROUP	DATO' ONG CHOON HENG [SSH]	225	187,000	34.609
03 Jun 2022 - 03 Jun 2022	FPGROUP	DATO' ONG CHOON HENG [DIR/CEO]	225	187,000	34.609
01 Jun 2022 - 01 Jun 2022	GASMSIA	EMPLOYEES PROVIDENT FUND BOARD [SSH]	146	64,485	5.022
09 Jun 2022 - 09 Jun 2022	GCAP	DATUK YAP YEE PING [DIR/CEO]	225	13,360	4.17
03 Jun 2022 - 03 Jun 2022	GCAP	MR LEE POH HIN [SSH]	30	31,276	9.751
03 Jun 2022 - 03 Jun 2022	GCAP	MR LEE YEE LONG [SSH]	30	30,273	9.439
07 Jun 2022 - 07 Jun 2022	GDEX	MR TEONG TECK LEAN [DIR/CEO]	1,256	2,200,242	39.431
03 Jun 2022 - 03 Jun 2022	GENP	KUMPULAN WANG PERSARAAN (DIPERBADANKAN) [SSH]	27	66,924	7.459
08 Jun 2022 - 08 Jun 2022	GENTING	TAN SRI LIM KOK THAY [SSH]	-2,692	1,694,779	44.014
08 Jun 2022 - 08 Jun 2022	GENTING	KIEN HUAT INTERNATIONAL LIMITED [SSH]	-2,692	1,694,779	44.014
08 Jun 2022 - 08 Jun 2022	GENTING	MR LIM KEONG HUI [DIR/CEO]	-2,692	1,694,779	44.014
08 Jun 2022 - 08 Jun 2022	GENTING	PARKVIEW MANAGEMENT SDN BHD [SSH]	-2,692	1,694,779	44.014
08 Jun 2022 - 08 Jun 2022	GENTING	MR LIM KEONG HUI [SSH]	-2,692	1,694,779	44.014
08 Jun 2022 - 08 Jun 2022	GENTING	TAN SRI LIM KOK THAY [DIR/CEO]	-2,692	1,694,779	44.014
08 Jun 2022 - 08 Jun 2022	GENTING	KIEN HUAT REALTY SDN BERHAD [SSH]	-2,692	1,646,659	42.764
07 Jun 2022 - 07 Jun 2022	GENTING	MR LIM KEONG HUI [SSH]	-20,000	1,697,472	44.084
07 Jun 2022 - 07 Jun 2022	GENTING	TAN SRI LIM KOK THAY [DIR/CEO]	-20,000	1,697,472	44.084
07 Jun 2022 - 07 Jun 2022	GENTING	MR LIM KEONG HUI [DIR/CEO]	-20,000	1,697,472	44.084
07 Jun 2022 - 07 Jun 2022	GENTING	PARKVIEW MANAGEMENT SDN BHD [SSH]	-20,000	1,697,472	44.084
07 Jun 2022 - 07 Jun 2022	GENTING	TAN SRI LIM KOK THAY [SSH]	-20,000	1,697,472	44.084
07 Jun 2022 - 07 Jun 2022	GENTING	KIEN HUAT INTERNATIONAL LIMITED [SSH]	-20,000	1,697,472	44.084
02 Jun 2022 - 07 Jun 2022	GENTING	MR LIM KEONG HUI [SSH]	-6,584	1,717,472	44.603
02 Jun 2022 - 07 Jun 2022	GENTING	MR LIM KEONG HUI [DIR/CEO]	-6,584	1,717,472	44.603
02 Jun 2022 - 07 Jun 2022	GENTING	TAN SRI LIM KOK THAY [DIR/CEO]	-6,584	1,717,472	44.603
02 Jun 2022 - 07 Jun 2022	GENTING	PARKVIEW MANAGEMENT SDN BHD [SSH]	-6,584	1,717,472	44.603
02 Jun 2022 - 07 Jun 2022	GENTING	KIEN HUAT INTERNATIONAL LIMITED [SSH]	-6,584	1,717,472	44.603
02 Jun 2022 - 07 Jun 2022	GENTING	TAN SRI LIM KOK THAY [SSH]	-6,584	1,717,472	44.603
02 Jun 2022 - 07 Jun 2022	GENTING	KIEN HUAT REALTY SDN BERHAD [SSH]	-6,584	1,649,352	42.834
03 Jun 2022 - 03 Jun 2022	GLOMAC	SHAPADU CAPITAL SDN. BHD. [SSH]	80,060	80,060	10.424
07 Jun 2022 - 10 Jun 2022	GTRONIC	MR NG KWENG CHONG [DIR/CEO]	16	39,482	5.9
03 Jun 2022 - 03 Jun 2022	HANDAL	MR SUNILDEEP SINGH DHALIWAL [DIR/CEO]	41	69,880	30.29
03 Jun 2022 - 03 Jun 2022	HANDAL	MR SUNILDEEP SINGH DHALIWAL [SSH]	41	69,880	30.29
03 Jun 2022 - 03 Jun 2022	HANDAL	SEAOFFSHORE EQUITIES SDN BHD [SSH]	41	51,298	22.23
03 Jun 2022 - 03 Jun 2022	HANDAL	ENCIK YAMANI HAFEZ BIN MUSA [SSH]	41	51,298	22.23
03 Jun 2022 - 03 Jun 2022	HANDAL	SEAOFFSHORE PRODUCTION SOLUTIONS SDN BHD [SSH]	41	51,298	22.23
03 Jun 2022 - 03 Jun 2022	HANDAL	SEAOFFSHORE CAPITAL SDN BHD [SSH]	41	51,298	22.23
07 Jun 2022 - 07 Jun 2022	HARTA	EMPLOYEES PROVIDENT FUND BOARD [SSH]	-1,201	263,467	7.687
03 Jun 2022 - 03 Jun 2022	HARTA	EMPLOYEES PROVIDENT FUND BOARD [SSH]	-823	264,668	7.722
02 Jun 2022 - 02 Jun 2022	HARTA	EMPLOYEES PROVIDENT FUND BOARD [SSH]	-1,050	265,491	7.746
01 Jun 2022 - 01 Jun 2022	HARTA	EMPLOYEES PROVIDENT FUND BOARD [SSH]	-530	266,541	7.776
09 Jun 2022 - 09 Jun 2022	HEIM	KAYNE ANDERSON RUDNICK INVESTMENT MANAGEMENT LLC. [SSH]	-55	15,150	5.015
07 Jun 2022 - 07 Jun 2022	HEIM	KAYNE ANDERSON RUDNICK INVESTMENT MANAGEMENT LLC. [SSH]	-64	15,205	5.033
03 Jun 2022 - 03 Jun 2022	HEIM	KAYNE ANDERSON RUDNICK INVESTMENT MANAGEMENT LLC. [SSH]	-157	15,269	5.054
02 Jun 2022 - 02 Jun 2022	HEIM	KAYNE ANDERSON RUDNICK INVESTMENT MANAGEMENT LLC. [SSH]	-52	15,426	5.106
07 Jun 2022 - 07 Jun 2022	HLBANK	EMPLOYEES PROVIDENT FUND BOARD [SSH]	-973	204,949	9.822
03 Jun 2022 - 03 Jun 2022	HLBANK	EMPLOYEES PROVIDENT FUND BOARD [SSH]	818	205,922	9.869
02 Jun 2022 - 02 Jun 2022	HLBANK	EMPLOYEES PROVIDENT FUND BOARD [SSH]	201	205,103	9.829
01 Jun 2022 - 01 Jun 2022	HLBANK	EMPLOYEES PROVIDENT FUND BOARD [SSH]	-210	204,902	9.82
10 Jun 2022 - 10 Jun 2022	HLIND	DATO' DR JIM KHOR MUN WEI [DIR/CEO]	10	286	0.089
03 Jun 2022 - 07 Jun 2022	HSPLANT	DATO' MOHAMMED BIN HAJI CHE HUSSEIN [DIR/CEO]	17	17	0.002
01 Jun 2022 - 01 Jun 2022	HSPLANT	TAN SRI DATUK SERI PANGLIAMA LAU CHO KUN @ LAU YU CHAK [SSH]	-106	556,008	69.528
01 Jun 2022 - 01 Jun 2022	HSPLANT	GEK POH (HOLDINGS) SDN BHD [SSH]	-106	556,008	69.528
08 Jun 2022 - 08 Jun 2022	HSSEB	DATO' MOHD ZAKHIR SIDDIQY BIN SIDEK [DIR/CEO]	600	1,183	0.239
07 Jun 2022 - 07 Jun 2022	IHH	EMPLOYEES PROVIDENT FUND BOARD [SSH]	223	853,361	9.694
03 Jun 2022 - 03 Jun 2022	IHH	EMPLOYEES PROVIDENT FUND BOARD [SSH]	1,258	853,138	9.692
02 Jun 2022 - 02 Jun 2022	IHH	EMPLOYEES PROVIDENT FUND BOARD [SSH]	713	851,879	9.677
01 Jun 2022 - 01 Jun 2022	IHH	EMPLOYEES PROVIDENT FUND BOARD [SSH]	101	851,166	9.669
07 Jun 2022 - 07 Jun 2022	IJM	URUSHARTA JAMAAH SDN BHD [SSH]	486	214,674	6.081
03 Jun 2022 - 03 Jun 2022	IJM	URUSHARTA JAMAAH SDN BHD [SSH]	721	214,188	6.067
01 Jun 2022 - 01 Jun 2022	IJM	URUSHARTA JAMAAH SDN BHD [SSH]	-268	213,467	6.047
03 Jun 2022 - 03 Jun 2022	INARI	EMPLOYEES PROVIDENT FUND BOARD [SSH]	400	298,699	8.058
02 Jun 2022 - 02 Jun 2022	INARI	EMPLOYEES PROVIDENT FUND BOARD [SSH]	1,493	298,299	8.047
03 Jun 2022 - 03 Jun 2022	INARI	KUMPULAN WANG PERSARAAN (DIPERBADANKAN) [SSH]	70	339,994	9.172
01 Jun 2022 - 01 Jun 2022	INARI	EMPLOYEES PROVIDENT FUND BOARD [SSH]	200	296,806	8.007
27 May 2022 - 27 May 2022	INNATURE	DATIN CHEAH KIM CHOO [DIR/CEO]	300	528,257	74.837
27 May 2022 - 27 May 2022	INNATURE	DATIN CHEAH KIM CHOO [SSH]	300	507,329	71.872
03 Jun 2022 - 07 Jun 2022	INTA	MR LIM OOI JOO [SSH]	220	234,954	43.896
03 Jun 2022 - 07 Jun 2022	INTA	MR LIM OOI JOO [DIR/CEO]	220	234,954	43.896
03 Jun 2022 - 07 Jun 2022	INTA	MADAM KOK CHIN SEOW [SSH]	220	187,223	34.978
03 Jun 2022 - 07 Jun 2022	INTA	APEXJAYA INDUSTRIES SDN BHD [SSH]	220	185,916	34.734
01 Jun 2022 - 02 Jun 2022	INTA	MR LIM OOI JOO [SSH]	110	234,734	43.855
01 Jun 2022 - 02 Jun 2022	INTA	MR LIM OOI JOO [DIR/CEO]	110	234,734	43.855
01 Jun 2022 - 02 Jun 2022	INTA	MADAM KOK CHIN SEOW [SSH]	110	187,003	34.937
01 Jun 2022 - 02 Jun 2022	INTA	APEXJAYA INDUSTRIES SDN BHD [SSH]	110	185,696	34.693
03 Jun 2022 - 07 Jun 2022	INTA-WA	MR LIM OOI JOO [DIR/CEO]	80	58,737	43.894
03 Jun 2022 - 03 Jun 2022	IOICORP	EMPLOYEES PROVIDENT FUND BOARD [SSH]	-564	675,463	10.872
07 Jun 2022 - 07 Jun 2022	IOIPG	EMPLOYEES PROVIDENT FUND BOARD [SSH]	-62	443,501	8.055

Notice Period is 05 June 2022 - 11 June 2022

Effective Change Date	Stock Name	Buyer/ Seller Name [Classification]	Bought / (Sold) ['000]	No. of Shares After Trade ['000]	
			Total	Total	% Held
03 Jun 2022 - 03 Jun 2022	IOIPG	EMPLOYEES PROVIDENT FUND BOARD [SSH]	-181	443,563	8.056
02 Jun 2022 - 02 Jun 2022	IOIPG	EMPLOYEES PROVIDENT FUND BOARD [SSH]	-50	443,744	8.059
01 Jun 2022 - 01 Jun 2022	IOIPG	EMPLOYEES PROVIDENT FUND BOARD [SSH]	-283	443,794	8.06
02 Jun 2022 - 02 Jun 2022	JADEM	DATO SRI CHONG WEI CHUAN [SSH]	-1,963	21,607	6.71
02 Jun 2022 - 02 Jun 2022	JADEM	X INFINITY GROUP BERHAD [SSH]	-1,963	20,757	6.446
02 Jun 2022 - 02 Jun 2022	JADEM	X INFINITY HOLDING SDN BHD [SSH]	-1,963	20,757	6.446
08 Jun 2022 - 08 Jun 2022	JCY	DATO' TAN SHIH LENG [DIR/CEO]	422	9,693	0.459
03 Jun 2022 - 03 Jun 2022	JIANKUN	MR ANG KIAN YOU [SSH]	1,403	12,914	5.806
03 Jun 2022 - 03 Jun 2022	KAB	DATO' LAI KENG ONN [SSH]	-8,750	595,230	33.11
03 Jun 2022 - 03 Jun 2022	KAB	DATO' LAI KENG ONN [DIR/CEO]	-8,750	595,230	33.11
03 Jun 2022 - 03 Jun 2022	KAB	MR KINGTONG TONG KUM LOONG [SSH]	8,750	243,349	13.53
07 Jun 2022 - 07 Jun 2022	KLCC	EMPLOYEES PROVIDENT FUND BOARD [SSH]	14	181,055	10.029
07 Jun 2022 - 07 Jun 2022	KLCC	EMPLOYEES PROVIDENT FUND BOARD [SSH]	14	181,055	10.029
03 Jun 2022 - 03 Jun 2022	KLCC	EMPLOYEES PROVIDENT FUND BOARD [SSH]	52	181,041	10.028
03 Jun 2022 - 03 Jun 2022	KLCC	EMPLOYEES PROVIDENT FUND BOARD [SSH]	52	181,041	10.028
02 Jun 2022 - 02 Jun 2022	KLCC	EMPLOYEES PROVIDENT FUND BOARD [SSH]	34	180,989	10.025
02 Jun 2022 - 02 Jun 2022	KLCC	EMPLOYEES PROVIDENT FUND BOARD [SSH]	34	180,989	10.025
07 Jun 2022 - 07 Jun 2022	KLK	EMPLOYEES PROVIDENT FUND BOARD [SSH]	517	108,927	10.103
03 Jun 2022 - 03 Jun 2022	KLK	EMPLOYEES PROVIDENT FUND BOARD [SSH]	248	108,410	10.055
02 Jun 2022 - 02 Jun 2022	KLK	EMPLOYEES PROVIDENT FUND BOARD [SSH]	568	108,162	10.032
01 Jun 2022 - 01 Jun 2022	KLK	EMPLOYEES PROVIDENT FUND BOARD [SSH]	-108	107,594	9.979
07 Jun 2022 - 07 Jun 2022	KOSSAN	EMPLOYEES PROVIDENT FUND BOARD [SSH]	-1,638	201,210	7.886
03 Jun 2022 - 03 Jun 2022	KOSSAN	EMPLOYEES PROVIDENT FUND BOARD [SSH]	-4,327	202,848	7.95
02 Jun 2022 - 02 Jun 2022	KOSSAN	EMPLOYEES PROVIDENT FUND BOARD [SSH]	-413	207,174	8.119
01 Jun 2022 - 01 Jun 2022	KOSSAN	EMPLOYEES PROVIDENT FUND BOARD [SSH]	-87	207,587	8.136
08 Jun 2022 - 08 Jun 2022	KSSC	DR LIM PANG KIAM [SSH]	28	8,947	7.767
03 Jun 2022 - 03 Jun 2022	KSSC	DR LIM PANG KIAM [SSH]	10	8,919	7.742
01 Jun 2022 - 01 Jun 2022	LAYHONG	DATO' YAP CHOR HOW [DIR/CEO]	-3,000	3,284	0.444
07 Jun 2022 - 07 Jun 2022	LGMS	MISS GOH SOON SEI [SSH]	45,600	319,005	69.958
07 Jun 2022 - 07 Jun 2022	LGMS	MR FONG CHOONG FOOK [DIR/CEO]	-45,600	319,005	69.958
07 Jun 2022 - 07 Jun 2022	LGMS	MR FONG CHOONG FOOK [SSH]	-45,600	319,005	69.958
07 Jun 2022 - 07 Jun 2022	LGMS	MISS GOH SOON SEI [DIR/CEO]	-45,600	319,005	69.958
07 Jun 2022 - 07 Jun 2022	LGMS	DR TEH CHEE GHEE [DIR/CEO]	250	250	0.055
07 Jun 2022 - 07 Jun 2022	LGMS	TS. LIM MEI SHYAN [DIR/CEO]	-200	200	0.044
07 Jun 2022 - 07 Jun 2022	LITRAK	EMPLOYEES PROVIDENT FUND BOARD [SSH]	303	31,703	5.891
03 Jun 2022 - 03 Jun 2022	LITRAK	EMPLOYEES PROVIDENT FUND BOARD [SSH]	216	31,400	5.835
03 Jun 2022 - 07 Jun 2022	LITRAK	IR HAJI YUSOFF BIN DAUD [DIR/CEO]	-73	656	0.122
02 Jun 2022 - 02 Jun 2022	LITRAK	EMPLOYEES PROVIDENT FUND BOARD [SSH]	625	31,184	5.795
02 Jun 2022 - 03 Jun 2022	LKL	MR ANG KIAN YOU [SSH]	3,632	52,818	5.436
07 Jun 2022 - 07 Jun 2022	LUSTER	MR PHUAH CHENG PENG [SSH]	8,000	232,614	7.806
07 Jun 2022 - 07 Jun 2022	LUSTER	MR PHUAH CHENG PENG [DIR/CEO]	8,000	232,614	7.806
08 Jun 2022 - 09 Jun 2022	MAGNI	MR TAN POAY SENG [DIR/CEO]	201	105,801	24.41
07 Jun 2022 - 07 Jun 2022	MALAKOF	EMPLOYEES PROVIDENT FUND BOARD [SSH]	-2,272	502,213	10.276
03 Jun 2022 - 03 Jun 2022	MALAKOF	EMPLOYEES PROVIDENT FUND BOARD [SSH]	-2,229	504,485	10.323
03 Jun 2022 - 03 Jun 2022	MALAKOF	URUSHARTA JAMAAH SDN. BHD. [SSH]	710	498,500	10.2
02 Jun 2022 - 02 Jun 2022	MALAKOF	EMPLOYEES PROVIDENT FUND BOARD [SSH]	-1,000	506,714	10.368
02 Jun 2022 - 02 Jun 2022	MALAKOF	URUSHARTA JAMAAH SDN. BHD. [SSH]	1,567	497,790	10.186
01 Jun 2022 - 01 Jun 2022	MALAKOF	EMPLOYEES PROVIDENT FUND BOARD [SSH]	-435	507,714	10.389
01 Jun 2022 - 01 Jun 2022	MALAKOF	URUSHARTA JAMAAH SDN. BHD. [SSH]	-802	496,223	10.154
08 Jun 2022 - 09 Jun 2022	MATANG	MR ANG KIAN YOU [SSH]	6,231	175,970	8.102
03 Jun 2022 - 03 Jun 2022	MATANG	DATUK TEOH SEW HOCK [DIR/CEO]	1,200	9,028	0.416
02 Jun 2022 - 02 Jun 2022	MATANG	MR ANG KIAN YOU [SSH]	2,075	169,740	7.815
07 Jun 2022 - 07 Jun 2022	MATRIX	EMPLOYEES PROVIDENT FUND BOARD [SSH]	-150	71,679	8.592
02 Jun 2022 - 02 Jun 2022	MATRIX	EMPLOYEES PROVIDENT FUND BOARD [SSH]	-116	71,829	8.61
07 Jun 2022 - 07 Jun 2022	MAXIS	EMPLOYEES PROVIDENT FUND BOARD (EPF BOARD) [SSH]	-378	938,028	11.986

Notice Period is 05 June 2022 - 11 June 2022

Effective Change Date	Stock Name	Buyer/ Seller Name [Classification]	Bought / (Sold) ['000]	No. of Shares After Trade ['000]	
			Total	Total	% Held
03 Jun 2022 - 03 Jun 2022	NCT	DATO' SRI YAP NGAN CHOY [DIR/CEO]	501	496,510	51.042
03 Jun 2022 - 03 Jun 2022	NCT	DATO' SRI YAP NGAN CHOY [SSH]	501	496,510	51.042
02 Jun 2022 - 02 Jun 2022	NCT	DATO' SRI YAP NGAN CHOY [SSH]	5,626	496,009	50.99
02 Jun 2022 - 02 Jun 2022	NCT	DATO' SRI YAP NGAN CHOY [DIR/CEO]	5,626	496,009	50.99
07 Jun 2022 - 07 Jun 2022	NESTLE	EMPLOYEES PROVIDENT FUND BOARD [SSH]	2	21,766	9.282
03 Jun 2022 - 03 Jun 2022	NESTLE	EMPLOYEES PROVIDENT FUND BOARD [SSH]	0.4	21,744	9.272
01 Jun 2022 - 01 Jun 2022	NESTLE	EMPLOYEES PROVIDENT FUND BOARD [SSH]	-10	21,742	9.272
08 Jun 2022 - 09 Jun 2022	NOTION	MR CHOO WING HONG [SSH]	153	35,936	6.969
08 Jun 2022 - 09 Jun 2022	NOTION	MR CHOO WING HONG [DIR/CEO]	153	35,936	6.969
03 Jun 2022 - 08 Jun 2022	NOVAMSC	MR OOI KENG THYE [SSH]	3,030	117,906	10.081
10 Jun 2022 - 10 Jun 2022	NWP	QUAH SEIK LEE [SSH]	20,000	46,000	8.739
07 Jun 2022 - 07 Jun 2022	OCK	EMPLOYEES PROVIDENT FUND BOARD [SSH]	-78	78,406	7.435
03 Jun 2022 - 03 Jun 2022	OCK	EMPLOYEES PROVIDENT FUND BOARD [SSH]	-244	78,483	7.443
03 Jun 2022 - 03 Jun 2022	OKA	MR CHOK HOOA @ CHOK YIN FATT [DIR/CEO]	9	1,622	0.661
08 Jun 2022 - 08 Jun 2022	OSK	TAN SRI ONG LEONG HUAT @ WONG JOO HWA [DIR/CEO]	1,416,057	1,143,298	55.443
08 Jun 2022 - 08 Jun 2022	OSK	TAN SRI ONG LEONG HUAT @ WONG JOO HWA [SSH]	1,416,057	1,087,290	52.727
08 Jun 2022 - 08 Jun 2022	OSK	YELLOW ROCK (L) FOUNDATION [SSH]	1,033,114	1,033,114	50.1
07 Jun 2022 - 07 Jun 2022	PADINI	EMPLOYEES PROVIDENT FUND BOARD [SSH]	-195	36,605	5.564
03 Jun 2022 - 03 Jun 2022	PANTECH	MR TAN ANG ANG [DIR/CEO]	225	15,990	1.945
07 Jun 2022 - 07 Jun 2022	PBBANK	EMPLOYEES PROVIDENT FUND BOARD [SSH]	2,800	2,941,140	15.15
03 Jun 2022 - 03 Jun 2022	PBBANK	EMPLOYEES PROVIDENT FUND BOARD [SSH]	1,835	2,938,340	15.14
02 Jun 2022 - 02 Jun 2022	PBBANK	EMPLOYEES PROVIDENT FUND BOARD [SSH]	-1,997	2,936,506	15.13
01 Jun 2022 - 01 Jun 2022	PBBANK	EMPLOYEES PROVIDENT FUND BOARD [SSH]	-988	2,938,503	15.14
07 Jun 2022 - 07 Jun 2022	PCHEM	EMPLOYEES PROVIDENT FUND BOARD ("EPF BOARD") [SSH]	2,180	599,760	7.497
03 Jun 2022 - 03 Jun 2022	PCHEM	EMPLOYEES PROVIDENT FUND BOARD ("EPF BOARD") [SSH]	2,399	597,580	7.47
02 Jun 2022 - 02 Jun 2022	PCHEM	EMPLOYEES PROVIDENT FUND BOARD ("EPF BOARD") [SSH]	4,425	595,181	7.44
01 Jun 2022 - 01 Jun 2022	PCHEM	EMPLOYEES PROVIDENT FUND BOARD ("EPF BOARD") [SSH]	-774	590,756	7.384
08 Jun 2022 - 08 Jun 2022	PECCA	DATIN SAM YIN THING [DIR/CEO]	279,807	424,146	56.418
08 Jun 2022 - 08 Jun 2022	PECCA	DATIN SAM YIN THING [SSH]	279,807	424,146	56.418
08 Jun 2022 - 08 Jun 2022	PECCA	DATUK TEOH HWA CHENG [DIR/CEO]	279,807	397,443	52.866
08 Jun 2022 - 08 Jun 2022	PECCA	DATUK TEOH HWA CHENG [SSH]	279,807	397,443	52.866
07 Jun 2022 - 07 Jun 2022	PENTA	EMPLOYEES PROVIDENT FUND BOARD [SSH]	700	55,652	7.824
03 Jun 2022 - 03 Jun 2022	PENTA	EMPLOYEES PROVIDENT FUND BOARD [SSH]	340	54,952	7.725
02 Jun 2022 - 02 Jun 2022	PENTA	EMPLOYEES PROVIDENT FUND BOARD [SSH]	1,377	54,612	7.678
01 Jun 2022 - 01 Jun 2022	PENTA	EMPLOYEES PROVIDENT FUND BOARD [SSH]	126	53,235	7.484
09 Jun 2022 - 09 Jun 2022	PESTECH	MR LIM AH HOCK [SSH]	580	324,140	32.922
09 Jun 2022 - 09 Jun 2022	PESTECH	MR LIM AH HOCK [DIR/CEO]	580	324,140	32.922
07 Jun 2022 - 07 Jun 2022	PESTECH	MR LIM PAY CHUAN [DIR/CEO]	155	190,841	19.383
07 Jun 2022 - 07 Jun 2022	PESTECH	MR LIM PAY CHUAN [SSH]	155	190,841	19.383
07 Jun 2022 - 07 Jun 2022	PETGAS	EMPLOYEES PROVIDENT FUND BOARD [SSH]	93	276,546	13.976
03 Jun 2022 - 03 Jun 2022	PETGAS	EMPLOYEES PROVIDENT FUND BOARD [SSH]	300	276,452	13.971
02 Jun 2022 - 02 Jun 2022	PETGAS	EMPLOYEES PROVIDENT FUND BOARD [SSH]	110	276,152	13.956
01 Jun 2022 - 01 Jun 2022	PETGAS	EMPLOYEES PROVIDENT FUND BOARD [SSH]	264	276,042	13.95
09 Jun 2022 - 09 Jun 2022	PINEAPP	DATO LIM KHOON HENG [DIR/CEO]	200	32,728	67.481
01 Jun 2022 - 01 Jun 2022	POHKONG	MR YEO SENG CHONG [SSH]	240	25,725	6.269
01 Jun 2022 - 01 Jun 2022	POHKONG	MADAM LIM MEE HWA [SSH]	240	25,725	6.269
01 Jun 2022 - 01 Jun 2022	POHKONG	YEOMAN CAPITAL MANAGEMENT PTE LTD [SSH]	240	21,475	5.233
07 Jun 2022 - 07 Jun 2022	PPB	EMPLOYEES PROVIDENT FUND BOARD [SSH]	192	160,314	11.269
03 Jun 2022 - 03 Jun 2022	PPB	EMPLOYEES PROVIDENT FUND BOARD [SSH]	348	160,122	11.256
02 Jun 2022 - 02 Jun 2022	PPB	EMPLOYEES PROVIDENT FUND BOARD [SSH]	170	159,774	11.231
10 Jun 2022 - 10 Jun 2022	PTRANS	DATO' SRI CHEONG KONG FITT [SSH]	529	203,708	29.176
10 Jun 2022 - 10 Jun 2022	PTRANS	DATO' SRI CHEONG KONG FITT [DIR/CEO]	529	203,708	29.176
10 Jun 2022 - 10 Jun 2022	PTRANS	DATIN SRI LIM SOW KENG [SSH]	529	203,708	29.176
09 Jun 2022 - 09 Jun 2022	PTRANS	DATO' SRI CHEONG KONG FITT [DIR/CEO]	380	203,179	29.1
09 Jun 2022 - 09 Jun 2022	PTRANS	DATIN SRI LIM SOW KENG [SSH]	380	203,179	29.1
09 Jun 2022 - 09 Jun 2022	PTRANS	DATO' SRI CHEONG KONG FITT [SSH]	380	203,179	29.1
10 Jun 2022 - 10 Jun 2022	PWROOT	MR WONG TAK KEONG [DIR/CEO]	68	9,036	18.611
10 Jun 2022 - 10 Jun 2022	PWROOT	MR WONG TAK KEONG [SSH]	68	9,036	18.611
07 Jun 2022 - 07 Jun 2022	QL	EMPLOYEES PROVIDENT FUND BOARD [SSH]	33	164,781	6.771
03 Jun 2022 - 03 Jun 2022	QL	EMPLOYEES PROVIDENT FUND BOARD [SSH]	-203	164,699	6.768
02 Jun 2022 - 02 Jun 2022	QL	EMPLOYEES PROVIDENT FUND BOARD [SSH]	498	164,902	6.776
01 Jun 2022 - 01 Jun 2022	QL	EMPLOYEES PROVIDENT FUND BOARD [SSH]	-56	164,373	6.754
07 Jun 2022 - 07 Jun 2022	RCECAP	TAN SRI AZMAN HASHIM [SSH]	45	426,324	58.243
07 Jun 2022 - 07 Jun 2022	RCECAP	CEMPAKA EMPAYAR SDN BHD [SSH]	45	390,928	53.407
07 Jun 2022 - 07 Jun 2022	RCECAP	AMCORP GROUP BERHAD [SSH]	45	390,928	53.407
07 Jun 2022 - 07 Jun 2022	RCECAP	CLEAR GOAL SDN BHD [SSH]	45	390,928	53.407
02 Jun 2022 - 02 Jun 2022	RCECAP	TAN SRI AZMAN HASHIM [SSH]	110	426,279	58.237
02 Jun 2022 - 02 Jun 2022	RCECAP	CEMPAKA EMPAYAR SDN BHD [SSH]	110	390,883	53.401
02 Jun 2022 - 02 Jun 2022	RCECAP	CLEAR GOAL SDN BHD [SSH]	110	390,883	53.401
02 Jun 2022 - 02 Jun 2022	RCECAP	CLEAR GOAL SDN BHD [SSH]	110	390,883	53.401
09 Jun 2022 - 09 Jun 2022	RESINTC	MR TEH LENG KANG [SSH]	150	9,598	6.583
09 Jun 2022 - 09 Jun 2022	RESINTC	MR TEH LENG KANG [DIR/CEO]	150	9,598	6.583
09 Jun 2022 - 09 Jun 2022	RESINTC	MISS WEI HWEI HONG [SSH]	150	9,598	6.583
09 Jun 2022 - 09 Jun 2022	RESINTC	MISS WEI HWEI HONG [DIR/CEO]	150	9,598	6.583
09 Jun 2022 - 09 Jun 2022	REVENUE	ENCIK NOR AZZAM BIN ABDUL JALIL [DIR/CEO]	-15	160	0.034
03 Jun 2022 - 08 Jun 2022	RGTECH	MR TEVANAIGAM RANDY CHITTY [DIR/CEO]	300	2,050	0.39
09 Jun 2022 - 09 Jun 2022	RHBBANK	KUMPULAN WANG PERSARAAN (DIPERBADANKAN) [SSH]	-570	224,524	5.419
07 Jun 2022 - 07 Jun 2022	RHBBANK	EMPLOYEES PROVIDENT FUND BOARD [SSH]	793	1,741,731	42.041
08 Jun 2022 - 08 Jun 2022	RHBBANK	YELLOW ROCK (L) FOUNDATION [SSH]	13,742	421,716	10.18
08 Jun 2022 - 08 Jun 2022	RHBBANK	YELLOW ROCK (L) FOUNDATION [SSH]	25,719	421,716	10.18
08 Jun 2022 - 08 Jun 2022	RHBBANK	YELLOW ROCK (L) FOUNDATION [SSH]	250,729	421,716	10.18
08 Jun 2022 - 08 Jun 2022	RHBBANK	YELLOW ROCK (L) FOUNDATION [SSH]	131,525	421,716	10.18
03 Jun 2022 - 03 Jun 2022	RHBBANK	EMPLOYEES PROVIDENT FUND BOARD [SSH]	1,000	1,740,938	42.022
07 Jun 2022 - 07 Jun 2022	RHBBANK	KUMPULAN WANG PERSARAAN (DIPERBADANKAN) [SSH]	-300	225,094	5.433
02 Jun 2022 - 02 Jun 2022	RHBBANK	EMPLOYEES PROVIDENT FUND BOARD [SSH]	1,844	1,739,938	41.998
03 Jun 2022 - 03 Jun 2022	RHBBANK	KUMPULAN WANG PERSARAAN (DIPERBADANKAN) [SSH]	-400	225,394	5.44
01 Jun 2022 - 01 Jun 2022	RHBBANK	EMPLOYEES PROVIDENT FUND BOARD [SSH]	1,807	1,738,094	41.953
02 Jun 2022 - 02 Jun 2022	SAPIND	MR KOH KOK HOOI [SSH]	17	4,650	6.389
07 Jun 2022 - 07 Jun 2022	SCGM	DATO' SRI LEE HOCK GUAN [SSH]	-500	40,438	21
01 Jun 2022 - 02 Jun 2022	SCGM	DATO' SRI LEE HOCK GUAN [SSH]	-361	40,938	21.26
07 Jun 2022 - 07 Jun 2022	SCIB	ENCIK NOOR AZRI BIN DATO' SRI NOOR AZERAI [DIR/CEO]	100	200	0.034
03 Jun 2022 - 03 Jun 2022	SEM	TAN SRI DATO' SERI VINCENT TAN CHEE YIOUN [SSH]	51	505,188	44.853
07 Jun 2022 - 07 Jun 2022	SHANG	ABERDEEN ASSET MANAGEMENT PLC [SSH]	-61	32,843	7.464

Notice Period is 05 June 2022 - 11 June 2022

Effective Change Date	Stock Name	Buyer/ Seller Name [Classification]	Bought / (Sold) ['000]	No. of Shares After Trade ['000]	
			Total	Total	% Held
07 Jun 2022 - 07 Jun 2022	SHANG	ABRDN PLC (FORMERLY KNOWN AS STANDARD LIFE ABERDEEN PLC) [SSH]	-61	32,843	7.464
07 Jun 2022 - 07 Jun 2022	SHANG	ABRDN ASIA LIMITED (FORMERLY KNOWN AS ABERDEEN STANDARD INVESTMENTS (ASIA) LIMITED) [SSH]	-61	26,302	5.978
08 Jun 2022 - 08 Jun 2022	SIME	AMANAHRAYA TRUSTEES BERHAD - AMANAH SAHAM BUMIPUTERA [SSH]	-976	2,734,024	40.148
07 Jun 2022 - 07 Jun 2022	SIME	EMPLOYEES PROVIDENT FUND BOARD [SSH]	1,183	606,877	8.912
02 Jun 2022 - 03 Jun 2022	SIME	EMPLOYEES PROVIDENT FUND BOARD [SSH]	2,555	605,693	8.895
02 Jun 2022 - 02 Jun 2022	SIMEPLT	EMPLOYEES PROVIDENT FUND BOARD [SSH]	11	933,382	13.496
01 Jun 2022 - 01 Jun 2022	SIMEPLT	EMPLOYEES PROVIDENT FUND BOARD [SSH]	100	933,370	13.496
07 Jun 2022 - 07 Jun 2022	SIMEPROP	EMPLOYEES PROVIDENT FUND BOARD [SSH]	-645	620,590	9.125
07 Jun 2022 - 07 Jun 2022	SKPRES	EMPLOYEES PROVIDENT FUND BOARD [SSH]	258	80,074	5.125
03 Jun 2022 - 03 Jun 2022	SKPRES	EMPLOYEES PROVIDENT FUND BOARD [SSH]	1,608	79,816	5.109
02 Jun 2022 - 02 Jun 2022	SKPRES	EMPLOYEES PROVIDENT FUND BOARD [SSH]	1,986	78,208	5.006
07 Jun 2022 - 07 Jun 2022	SOP	MR LING CHIONG SING [DIR/CEO]	100	162,938	27.975
07 Jun 2022 - 07 Jun 2022	SOP	MR TANG TIONG ING [DIR/CEO]	150	330	0.056
08 Jun 2022 - 08 Jun 2022	SPRITZER	MR CHOK HOOA @ CHOK YIN FATT [DIR/CEO]	5	186	0.088
07 Jun 2022 - 10 Jun 2022	STRAITS	ANG TUN YOUNG [SSH]	258	69,642	7.894
31 May 2022 - 03 Jun 2022	STRAITS	ANG TUN YOUNG [SSH]	110	69,384	7.865
07 Jun 2022 - 07 Jun 2022	SUNREIT	EMPLOYEES PROVIDENT FUND BOARD [SSH]	71	522,437	15.25
02 Jun 2022 - 02 Jun 2022	SUNWAY	EMPLOYEES PROVIDENT FUND BOARD [SSH]	-624	409,434	8.37
01 Jun 2022 - 01 Jun 2022	SUNWAY	EMPLOYEES PROVIDENT FUND BOARD [SSH]	-171	410,058	8.39
07 Jun 2022 - 07 Jun 2022	T7GLOBAL	TAN SRI DATUK SERI TAN KEAN SOON [SSH]	140	141,452	19.122
07 Jun 2022 - 07 Jun 2022	T7GLOBAL	TAN SRI DATUK SERI TAN KEAN SOON [DIR/CEO]	140	141,452	19.122
09 Jun 2022 - 09 Jun 2022	TAANN	DATUK AMAR ABDUL HAMED BIN HAJI SEPAWI [SSH]	2	149,437	33.927
09 Jun 2022 - 09 Jun 2022	TAANN	DATUK AMAR ABDUL HAMED BIN HAJI SEPAWI [DIR/CEO]	2	149,437	33.927
07 Jun 2022 - 07 Jun 2022	TAKAFUL	EMPLOYEES PROVIDENT FUND BOARD [SSH]	-12	90,934	10.86
03 Jun 2022 - 03 Jun 2022	TAKAFUL	EMPLOYEES PROVIDENT FUND BOARD [SSH]	138	90,945	10.862
01 Jun 2022 - 01 Jun 2022	TAKAFUL	EMPLOYEES PROVIDENT FUND BOARD [SSH]	106	90,807	10.845
07 Jun 2022 - 07 Jun 2022	TALIWRK	LEMBAGA TABUNG HAJI [SSH]	-47	157,992	7.838
07 Jun 2022 - 07 Jun 2022	TENAGA	EMPLOYEES PROVIDENT FUND BOARD [SSH]	-300	917,489	16.02
03 Jun 2022 - 03 Jun 2022	TENAGA	EMPLOYEES PROVIDENT FUND BOARD [SSH]	-300	917,896	16.03
07 Jun 2022 - 07 Jun 2022	TIMECOM	EMPLOYEES PROVIDENT FUND BOARD [SSH]	360	199,941	10.952
03 Jun 2022 - 03 Jun 2022	TIMECOM	EMPLOYEES PROVIDENT FUND BOARD [SSH]	-2	199,582	10.932
02 Jun 2022 - 02 Jun 2022	TIMECOM	EMPLOYEES PROVIDENT FUND BOARD [SSH]	44	199,584	10.932
09 Jun 2022 - 09 Jun 2022	TM	KUMPULAN WANG PERSARAAN (DIPERBADANKAN) [SSH]	-52	396,265	10.501
07 Jun 2022 - 07 Jun 2022	TM	EMPLOYEE PROVIDENT FUND BOARD (EPF BOARD) [SSH]	629	716,098	18.976
03 Jun 2022 - 03 Jun 2022	TM	EMPLOYEE PROVIDENT FUND BOARD (EPF BOARD) [SSH]	662	715,469	18.959
02 Jun 2022 - 02 Jun 2022	TM	EMPLOYEE PROVIDENT FUND BOARD (EPF BOARD) [SSH]	416	714,807	18.942
01 Jun 2022 - 01 Jun 2022	TM	EMPLOYEE PROVIDENT FUND BOARD (EPF BOARD) [SSH]	162	714,392	18.931
08 Jun 2022 - 08 Jun 2022	TOPGLOV	PUAN SRI TONG SIEW BEE [SSH]	1,000	2,880,035	35.968
08 Jun 2022 - 08 Jun 2022	TOPGLOV	TAN SRI DR LIM WEE CHAI [DIR/CEO]	1,000	2,880,035	35.968
08 Jun 2022 - 08 Jun 2022	TOPGLOV	TAN SRI DR LIM WEE CHAI [SSH]	1,000	2,880,035	35.968
08 Jun 2022 - 08 Jun 2022	TOPGLOV	MR LIM HOOI SIN [DIR/CEO]	1,000	2,879,835	35.966
08 Jun 2022 - 08 Jun 2022	TOPGLOV	MR LIM HOOI SIN [SSH]	1,000	2,879,835	35.966
08 Jun 2022 - 08 Jun 2022	TOPGLOV	MR LIM JIN FENG [SSH]	1,000	2,779,973	34.718
08 Jun 2022 - 08 Jun 2022	TOYOVEN	ENCIK TUAN HJ. IR. YUSOFF BIN DAUD [DIR/CEO]	40	271	0.23
10 Jun 2022 - 10 Jun 2022	TSH	TAN AIK PEN [DIR/CEO]	500	269,649	19.537
09 Jun 2022 - 09 Jun 2022	TSH	TAN AIK PEN [SSH]	500	269,149	19.501
09 Jun 2022 - 09 Jun 2022	TSH	TAN AIK PEN [DIR/CEO]	500	269,149	19.501
08 Jun 2022 - 08 Jun 2022	TSH	TAN AIK PEN [SSH]	500	268,649	19.465
08 Jun 2022 - 08 Jun 2022	TSH	TAN AIK PEN [DIR/CEO]	500	268,649	19.465
07 Jun 2022 - 07 Jun 2022	TSH	TAN AIK PEN [SSH]	500	268,149	19.429
07 Jun 2022 - 07 Jun 2022	TSH	TAN AIK PEN [DIR/CEO]	500	268,149	1

capital 
CAPITAL A BERHAD

The Board of Directors of Capital A Berhad (**CAPITALA**) wishes to announce that AirAsia Berhad, a wholly owned subsidiary of the Company, had on 13 June 2022, entered into a Wet Lease

Agreement with AirAsia X Berhad to govern the terms and conditions of leasing one Airbus A330-343 aircraft with complete crew, maintenance and insurance by AirAsia X Berhad to AirAsia Berhad on a wet lease basis in accordance with the terms and conditions of the Agreement.



**MCLEAN TECHNOLOGIES
 BERHAD**

On behalf of Mclean Technologies Berhad (**MCLEAN**), TA Securities wishes to announce that the listing application in relation to the Proposed Private Placement, Proposed Rights Issue and Proposed Acquisition has been submitted to Bursa Securities on 15 June 2022.



TITIJAYA LAND BERHAD

The Board of Directors of Titijaya Land Berhad (**TITIJYA**) wishes to announce that Aman Duta Sdn. Bhd., an indirect wholly-owned subsidiary of Titijaya Land Berhad, had on 15 June 2022, entered into an agreement to build-and-let with DHL. None of the Directors and/or major shareholders of Titijaya Land Berhad and/or persons connected to them have any interest, direct or indirect, in the Agreement. After having considered all aspects of the Agreement, the Board is of the opinion that the Agreement is in the best interest of the Company.

Disclaimer: The information in the Investor Relations page is extracted from individual companies' announcements in www.bursamalaysia.com. The information on this page is provided as a service to readers. We assume no liability for damages resulting from or arising out of the use of such information. Whilst every effort is made to ensure accuracy, the information presented has been simplified for your reading pleasure. Readers are advised to read the original and complete filings on the Bursa Malaysia website at https://www.bursamalaysia.com/market_information/announcements/company_announcement



HUA YANG BERHAD

On behalf of the Board of Directors of Hua Yang Berhad (**HUAYANG**), UOB Kay Hian Securities (M) Sdn Bhd wishes to announce that Hua Yang Berhad intends to undertake the following proposals:-



1. proposed renounceable rights issue of up to 88,000,000 new ordinary shares in HYB Shares or Rights Shares on the basis of 1 Rights Share for every 4 existing HYB Shares held, together with up to 88,000,000 free detachable warrants in HYB Warrants on the basis of 1 Warrant for every 1 Rights Share subscribed by the entitled shareholders at an issue price and entitlement date to be determined and announced later; and
2. proposed exemption under Paragraph 4.08(1)(b) of the Rules on Take-Overs, Mergers and Compulsory Acquisitions to Heng Holdings Sdn Bhd and persons acting in concert with it, from the obligation to undertake a mandatory offer for the remaining HYB Shares and Warrants not already owned by them pursuant to the Proposed Rights Issue with Warrants.

	20th June 2022	SFP TECH HOLDINGS BERHAD (ACE MARKET)
	20th June 2022	YX PRECIOUS METALS BERHAD (ACE MARKET)
	23th June 2022	ORGABIO HOLDINGS BERHAD (ACE MARKET)
	7th July 2022	SENG FONG HOLDINGS BERHAD (MAIN MARKET)

Disclaimer: The information in the Investor Relations page is extracted from individual companies' announcements in www.bursamalaysia.com. The information on this page is provided as a service to readers. We assume no liability for damages resulting from or arising out of the use of such information. Whilst every effort is made to ensure accuracy, the information presented has been simplified for your reading pleasure. Readers are advised to read the original and complete filings on the Bursa Malaysia website at https://www.bursamalaysia.com/market_information/announcements/company_announcement

ShareInvestor is a technology based company with a focus on Internet media and we have operations in Malaysia, Singapore and Thailand.

We are the market leader in providing a combination of market data, analysis and news on various platforms to traders and investors.

Our websites include www.shareinvestor.com and www.bursastation.com.
More information about our products and services can be found at www.shareinvestorholdings.com

We're looking for Drupal Developers who will be in charge of front-end development and back-end/module development. This role requires expertise in PHP, HTML, CSS, JS, and an eye for design aesthetics. The candidates should be familiar and have a passion working with content management systems.

Interested candidates are encouraged to apply with full resume, present and expected salary and a recent photograph.

Please send these to hr.my@shareinvestor.com for processing. ShareInvestor regrets that only shortlisted candidates shall be notified.

Drupal Developers (2 vacancies)

Job Responsibilities:

- Active participation in all UI / UX decisions
- Contribute actively to the continuous development and maintenance of development projects
- Enhance Drupal development quality
- Provide solutions to issues and suggestions for improvements.
- Designing and implementing new features to the system
- Ensuring optimal performance

Required Skills:

- At least 3 years of Drupal Theming and Front-End Development experience
- Proficient in PHP, HTML5/XHTML, CSS, Javascript, jQuery, AJAX, XML, Json
- Good Diploma/Degree in Computer Science/Computer Engineering.
- Experience working with Drupal's main modules, such as CTools, Views, Rules, Webform, and so on
- Ability to create custom Drupal modules
- Strong troubleshooting skills to fix bugs

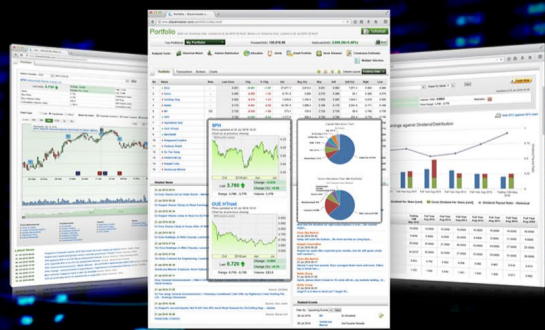
Benefits:

- Career & growth opportunities
- Interesting projects
- Medical Insurance
- Incentives

SHAREINVESTOR MARKET DATA PLATFORMS



**SHAREINVESTOR
STATION**
Advanced Charting Software
(8 Markets)



**SHAREINVESTOR
WEBPRO**
Browser-Based Market Data
Analytics Platform



BURSASTATION
Advanced Charting Software
(Bursa Malaysia Only)

ShareInvestor is a technology based company with a focus on Internet media and we have operations in Malaysia, Singapore and Thailand.

We are the market leader in providing a combination of market data, analysis and news on various platforms to traders and investors.

Our websites include www.shareinvestor.com and www.bursastation.com.

More information about our products and services can be found at www.shareinvestorholdings.com

We are looking for Developers to join our team, in a challenging, yet fun and fulfilling environment. The successful applicants will leverage on the latest Internet technologies to help create financial applications and platforms for investors, listed companies and financial institutions. Fresh graduates are welcome to apply.

Interested candidates are encouraged to apply with full resume, present and expected salary and a recent photograph.

Please send these to hr.my@shareinvestor.com for processing. ShareInvestor regrets that only shortlisted candidates shall be notified.

Ruby on Rails Developer (1 vacancy)

Responsibilities:

- Develop quality web-based software modules on schedule with a focus on Ruby and Ruby on Rails applications.
- Explore and utilize the latest web-based technologies.
- Document design specifications, logic concepts and module description.
- Maintain and enhance existing web-based applications.

Requirements:

- Experience in web-based programming/scripting is essential. Candidate must be able to explain clearly technical aspects of his/her past experiences and projects.
- Passion for programming and desire to learn new languages like Go.
- Good Diploma/Degree in Computer Science/Computer Engineering.
- Able to work well in a team and be able to follow documentation and coding standards.
- Knowledge in any of the following would be an added advantage
 - Ruby and Ruby on Rails Framework
 - Javascript and jQuery library
 - Go
 - Perl

Application Developer (C++/STL) (1 vacancy)

Responsibilities:

- Deliver quality software modules on schedule.
- Document design specifications, conceptions, module description.
- Maintain and enhance existing applications.

Requirements:

- Passion for programming and desire to learn.
- Good Diploma/Degree in Computer Science/Computer Engineering.
- Skills in C++ is essential.
- Experience with Visual Studio, networking stack and Golang would be an advantage.
- Proactive, resourceful and self-motivated with strong analytical skills.
- Good interpersonal, written and communication skills.
- Able to work with little supervision.