

Invest

A Weekly e-Publication by SHAREINVESTOR.com

Malaysia has RM3bil IPO pipeline in 2H22 - Maybank IB

ISSUE

110

FRIDAY
10 JUNE
2022

Scan/Click QR to Register



Via email, every Friday

03	LEADERBOARD	15	GROWTH STOCKS	25	BEHIND THE ACTION
05	SHARIAH HOT STOCKS	16	DIVIDEND STOCKS	30	FROM THE OBSERVER
07	COMPANY SPOTLIGHT	17	BROKERS' CALL	34	INSIDER ACTIVITY
09	SHARIAH MOMENTUM UP STOCKS	18	LONG COMPANIES	38	INVESTOR RELATIONS
11	NON SHARIAH HOT STOCKS	20	MARKET SENTIMENTS	41	CAREERS AT SHAREINVESTOR
13	UP TRENDING STOCKS	24	REGIONAL MARKETS		



SHAREINVESTOR®

Invest with Knowledge

CORPORATE

Managing Director (Malaysia) & Publisher
Edward Stanislaus
edward@shareinvestor.com

SALES & MARKETING

Director
Elizabeth Tan
elizabeth.tan@shareinvestor.com

Online IR

Manager
Letticia Wong
letticia.wong@shareinvestor.com

Advertising & Sponsorship Sales

Manager
Sharon Lee
sharon.lee@shareinvestor.com

MARKET DATA ANALYTICS

(marketdata.my@shareinvestor.com)
Account Manager
Heidee Ahmad
heidee.ahmad@shareinvestor.com
Coordinator
Watie Nordin
watie.nordin@shareinvestor.com

MARKET DATA ANALYTICS & EDITORIAL

Market Data & Media Coordinator
Silas Emmanuel Joseph
silas.joseph@shareinvestor.com

MARKET DATA ANALYTICS & EDITORIAL

Market Data Analyst
Nickson Aw
nickson.aw@shareinvestor.com

MARKETING COMMUNICATIONS

Marcomm Manager
Danny Ng

CREATIVE & DESIGN

Manager		Andric See
Asst. Manager		Ivy Yap
Web Developer		Nurul Atiqah Aiman Jasmin Izwan Rusli

IT APPS

Project Manager		Amir Yusoff
Sr. Software Engineer		Mohd. Qasem
Software Engineer		Lian Kok Keong

FINANCE, ADMIN & HR

Manager		Shireen Goh
Sn. Accounts Executive		Jessie Ho
Accounts Assistant		Ng Jin Yng

SHAREINVESTOR HOLDINGS

Chairman		Patrick Daniel
Group CEO		Christopher Lee
Group COO		Lim Dau Hee
Group CFO		Teo Siew May

GIVE A MAN A FISH AND YOU FEED HIM FOR A DAY; TEACH A MAN TO FISH AND YOU FEED HIM FOR A LIFETIME

ShareInvestor Malaysia Sdn. Bhd. (200001023956) (526564-M)
(Formerly known as SI Portal.com Sdn. Bhd.)
Unit No. DF2-07-03A, Level 7,
Persoft Tower, 6B Persiaran Tropicana,
47410 Petaling Jaya, Selangor Darul Ehsan.

Hotline : 603 7803 1791
Mobile : 011 6343 8939
Fax : 603 7803 1792

Website : www.ShareInvestor.com.my
www.ShareInvestorHoldings.com
www.Facebook.com/ShareInvestorMalaysia

ADVERTISEMENT ENQUIRY

SHAREINVESTOR WEBPRO

C² CHART

C² Chart is WebPro's new feature-packed technical analysis tool for the modern stock investor



Over 100 Indicators
Select your preferred indicators to best suit your technical strategies



Drawing Tools
Multiple drawing tools to easily identify chart patterns



Events Indicators
Key events can be pinned onto your charts for a better overview



Compare Tool
Conveniently compare multiple stock prices at the same time



Historical Data
Extract price data from over 30 years



Over 10 Chart Styles
Various charts to suit your preferred style



No App Needed
Access your charts from any computer or mobile



Easy Zoom
Intuitive zooming function on charts

www.shareinvestor.com - market data at your fingertips



ShareInvestor WebPro (www.shareinvestor.com/my)
Prices > Stock Prices > Bursa > click Stocks tab

1. mouse over Ranking > select Top Active > all Shariah stocks are denoted with an [S] > mouse over Column Layout > select Edit Customs > select Name > select Volume > select Last Done Price > Mouse Over Column Layout > select Custom
2. mouse over Ranking > select Top Turnover > all Shariah stocks are denoted with an [S] > mouse over Column Layout > select Edit Customs > select Name > select Last Done Price > select Value > Mouse Over Column Layout > select Custom
3. mouse over Ranking > select Top Gainers (Over 5 Trading Days) > mouse over Column Layout > select Edit Customs > select Name > select Last Done Price > select 5 Days Change > select 5 Days % Change > Mouse Over Column Layout > select Custom
4. mouse over Ranking > select Top Losers (Over 5 Trading Days)
5. mouse over Ranking > select Top % Gainers (Over 5 Trading Days)
6. mouse over Ranking > select Top % Losers (Over 5 Trading Days)

Shariah Top Actives (as at Yesterday)

Name	Price (RM)	Volume
YEWLEE [S]	0.305	2,523,094
DYNACIA [S]	0.145	2,267,841
LGMS [S]	0.715	1,264,905
GPACKET [S]	0.070	731,614
SERBADK [S]	0.105	515,457
TOPGLOV [S]	1.220	513,124
YONGTAI [S]	0.090	445,226
MNC [S]	0.015	415,244
WIDAD [S]	0.360	409,562
JETSON [S]	0.300	329,992

Shariah Top Turnover (as at Yesterday)

Name	Price (RM)	Value (RM)
LGMS [S]	0.715	101,769,141
PMETAL [S]	5.020	80,517,534
YEWLEE [S]	0.305	79,376,335
PCHEM [S]	9.640	75,111,739
TOPGLOV [S]	1.220	61,694,050
TENAGA [S]	8.790	58,697,271
IHH [S]	6.400	45,092,399
HIBISCS [S]	1.290	41,113,294
DYNACIA [S]	0.145	34,959,957
KLK [S]	25.140	31,208,182

Top Gainers (over 5 Trading days as at Yesterday)

Name	Price (RM)	Change (RM)
RAPID	12.460	+0.780
CHINTEK	9.850	+0.600
PETRONM	7.340	+0.540
DLADY	33.600	+0.500
F&N	20.500	+0.500
SAMAIDEN	1.100	+0.464
AJI	12.920	+0.420
BJFOOD	4.870	+0.280
CCB	2.750	+0.280
KFIMA	2.830	+0.260

Top % Gainers (over 5 Trading days as at Yesterday)

Name	Price (RM)	Change (%)
SAMAIDEN	1.100	+72.96
MTRONIC	0.105	+52.17
ANZO	0.015	+50.00
COMPUGT	0.015	+50.00
FINTEC	0.015	+50.00
AT	0.020	+33.33
TOPBLDS	0.045	+28.57
ARTRONIQ	0.695	+20.87
CRG	0.210	+20.00
JETSON	0.300	+20.00

Top Losers (over 5 Trading days as at Yesterday)

Name	Price (RM)	Change (RM)
KLK	25.140	-0.820
NESTLE	132.500	-0.800
PETDAG	21.720	-0.780
HLFG	19.280	-0.640
BKAWAN	26.840	-0.560
PPB	15.840	-0.560
PMETAL	5.020	-0.440
PETGAS	16.500	-0.400
PANAMY	27.280	-0.380
HLIND	8.890	-0.360

Top % Losers (over 5 Trading days as at Yesterday)

Name	Price (RM)	Change (%)
CAP	0.010	-33.33
EAH	0.010	-33.33
GOCEAN	0.015	-25.00
SAPNRG	0.045	-25.00
GOB	0.280	-21.13
EDUSPEC	0.020	-20.00
FAST	0.040	-20.00
GIIB	0.080	-20.00
TALAMT	0.020	-20.00
SRIDGE	0.130	-18.75

PURNELL

ONLY TOURBILLON



ESCAPE II FORGED CARBON

Purnell Asia

Tel. : +65.9817.3378

Email : sales.sg@purnellwatches.com

Instagram: [Purnell_Official](#)

www.purnellwatches.com

PLAY



Price & Volume Distribution Charts (as at Yesterday)

Technical Analysis

DEFINITION: Shariah compliant stocks with Technical Analysis showing 5-days & 10-days Moving Average Price below Yesterday's Close over past 3 days and with Volume Spike.

CHART GUIDE: Volume Distribution Chart is a statistical interpretation of the current sentiment on each stock in graphical format. The highest bar categorized as >150k is likely to be traded by institutions or super dealers, while the lowest bar categorized as <15k usually represents retail investors. "Buy Up" refers to more buyers snatching up the lots queued at selling price. "Sell Down" refers to sellers selling their shares to the buying queue



ShareInvestor WebPro > Screener > Market Screener (FA & TA) > select BURSA > add criteria

A. Criteria

- > click Add Criteria
- Technical Analysis Conditions tab select (i) Moving Average Below Close (ii) Volume Spike
- Fundamental Analysis Conditions tab > select (iii) Revenue
- Prices & Other Conditions tab > select (iv) Is Shariah Compliant
- Technical Analysis Conditions tab select (v) Moving Average Below Close
- Prices & Other Conditions tab > select (vi) Last Done Price
- Technical Analysis Conditions tab select (vii) Moving Average Below Close

B. Conditions (Criteria Filters)

1. Moving Average Below Close - select (MA) type (5) below close price for type (3) days
2. Volume Spike - Volume type (1) greater than type (5) days average
3. Revenue ("000) - select (more than) type (1) for the past select (1) financial year(s)
4. Is Shariah Compliant - select **Yes**
5. Moving Average Below Close - select (MA) type (10) below close price for type (3) days
6. Last Done Price - select (more than) type (0.3)
7. Moving Average Below Close - select (EMA) type (5) below close price for type (3) days

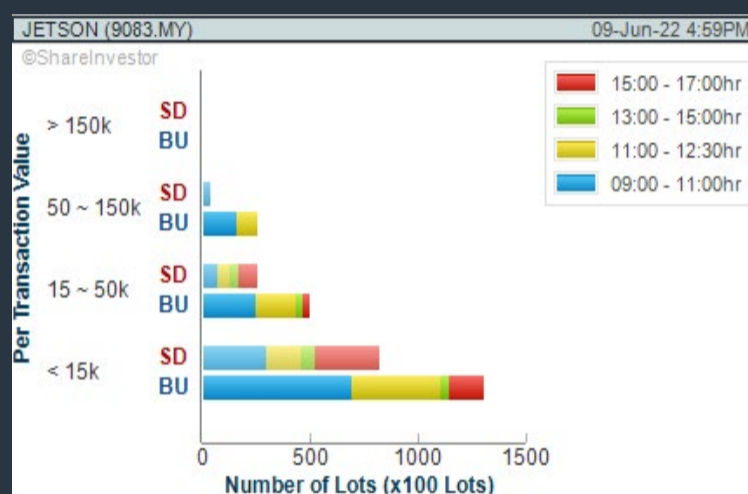
- > click Save Template > Create New Template type (Shariah Hot Stocks) > click Create
- > click Save Template as > select Shariah Hot Stocks > click Save
- > click Screen Now (may take a few minutes)
- > Sort By: Select (Vol) Select (Desc)
- > Mouse over stock name > Charts > click C² Charts or Volume Distribution

KUMPULAN JETSON BERHAD (9083)

C² Chart



Analysis

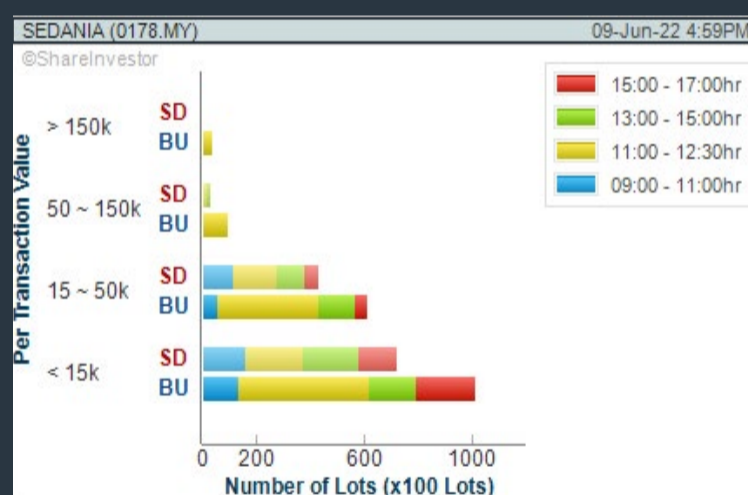


SEDANIA INNOVATOR BERHAD (0178)

C² Chart

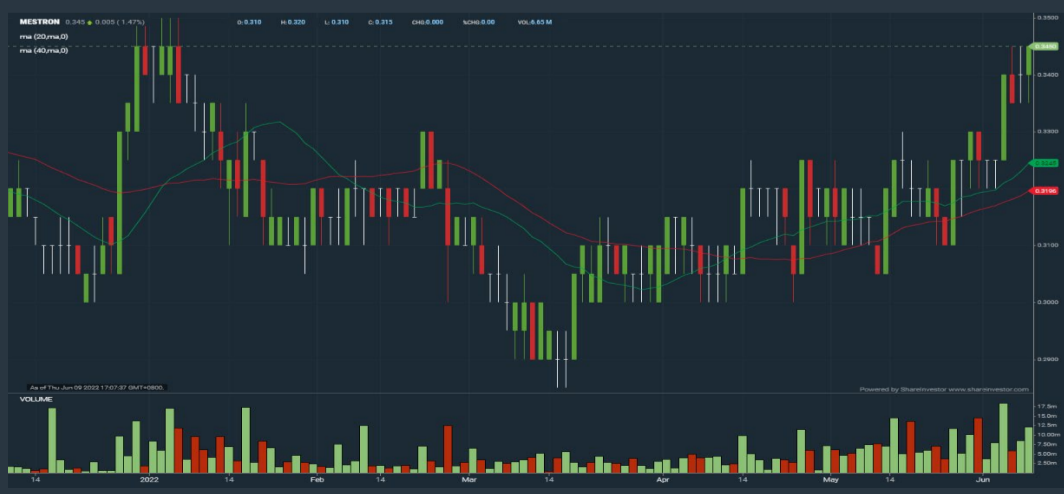


Analysis

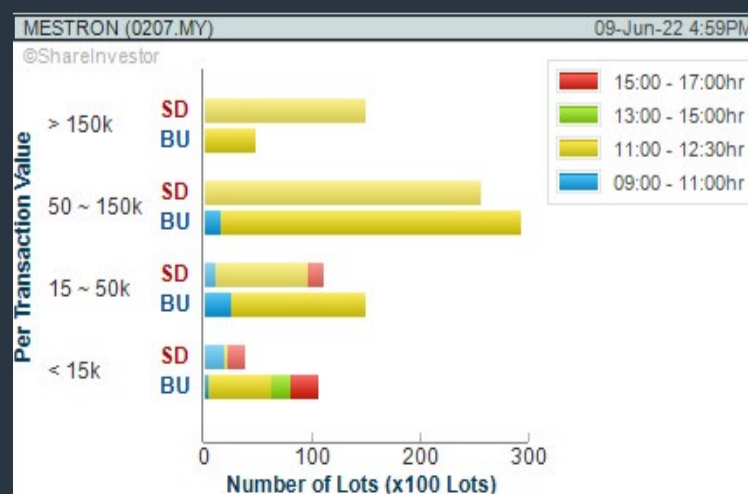


MESTRON HOLDINGS BERHAD (0207)

C² Chart



Analysis



Disclaimer: The information on this page is provided as a service to readers. It does not constitute financial advice and/or any investment recommendations. Past performance is not indicative of future results. We assume no liability for damages resulting from or arising out of the use of such information. It would be best if you did your own research to make your personal investment decisions wisely or consult a licenced investment advisor.

P Phillip Futures
Bringing Global Markets Closer to You

Trade CME Micro Futures

at only **USD2.50***

1 May - 31 July 2022



US Indices



Silver



Treasury Yields

Trade Now! →

*USD2.50 refers to commission rate.
T&C apply.



Use leverage for greater
capital efficiency



More precisely scale in
or out of positions to
fine tune exposure

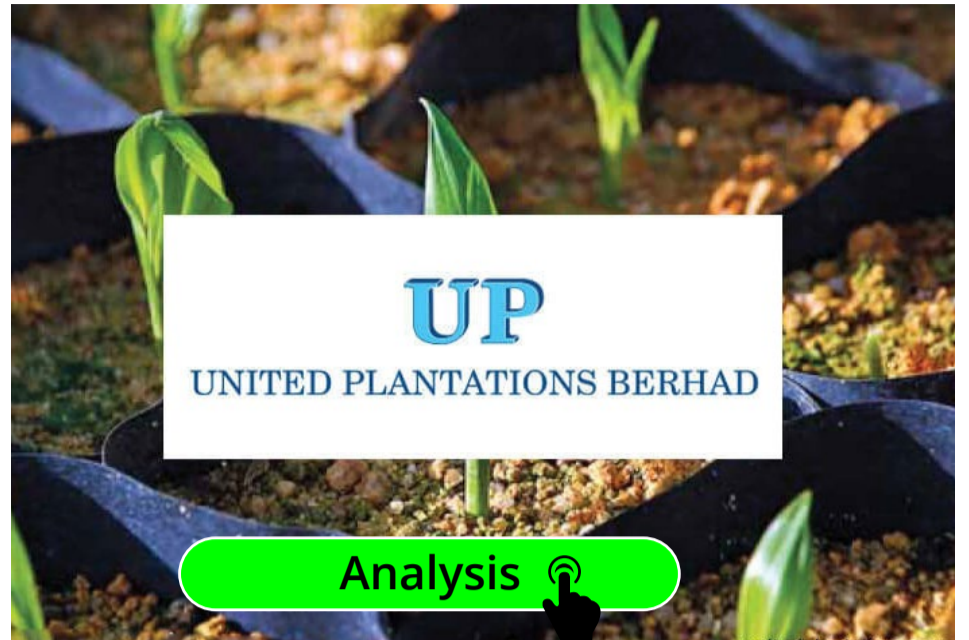


Around the clock
trading

Risk Disclaimer: This advertisement is for general information only and does not constitute a recommendation, offer or solicitation to buy or sell any investment product. It does not have regard to your specific investment objectives, financial situation or particular needs. Investments are subject to investment risks. The risk of loss in Futures trading can be substantial and you could lose in excess of your initial funds. You may wish to seek advice from a registered representative, pursuant to a separate engagement, and to read the governing Terms and Conditions and the Risk Disclosure Statement carefully before making a decision whether or not to invest in such products. The Securities Commission Malaysia has not reviewed this marketing/promotional material and takes no responsibilities for the contents of this marketing/promotional material and expressly disclaims all liability, however arising from this marketing/promotional material.

COMPANY BACKGROUND

The Company's principal business activity is in the cultivation and processing of palm oil, coconut and other plantation crops in a sustainable manner. Its subsidiary companies are engaged in several downstream activities such as; processing palm oil; and manufacturing; packing/distributing of end products in the form of cooking oils, edible oils, specialty fats and soap products. **United Plantations Berhad** is an efficiently managed, eco-friendly and integrated plantation company and is well known globally for its best agricultural practices and high quality standards.



UTDPLT UNITED PLANTATIONS BHD		Updated at: 09 Jun 2022 16:58	
Last (MYR): 14.520 ↓	Change: -0.040	High: 14.660	Remarks: s ?
	Change (%): -0.27	Low: 14.400	
Open	14.580	Yesterday's Close	14.580
Buy Price	14.480	Sell Price	14.520
Buy Volume ('00)	14	Sell Volume ('00)	9
Cumulative Volume ('00)	1,628	Cumulative Value	2,356,818

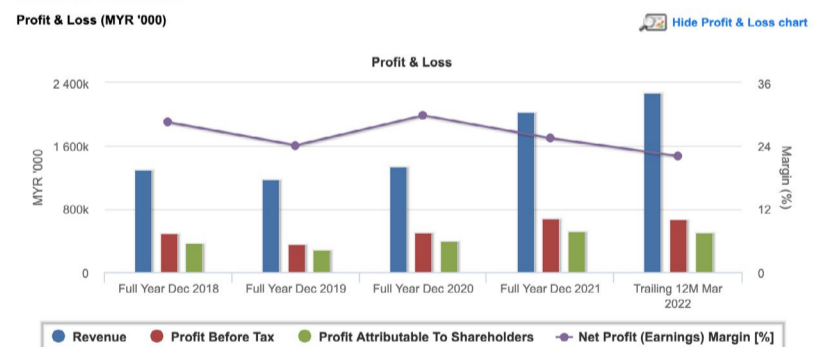
Financial Analysis

	Revenue Growth Increasing revenue in last 2 consecutive years			Profit Growth Increasing profit in last 2 consecutive years (with last 3 profitable years)	
	Piotroski F Score The company has above average financial strength (Piotroski F-Score of 6-7)			Dividend Payout Dividend is increasing over the past 60 months.	
	Current Ratio The company is well-positioned to cover its short-term obligations with its current assets (ratio between 1.5 to 10) for 3 consecutive years			Gross Profit Margin Consistently high gross profit margin of at least 40% for 3 years	
	Net Earnings Margin Consistently high net profit margin of at least 20% for 3 years			Return on Assets (ROA) ROA above 10% for 2 consecutive years	
	Return on Equity (ROE) ROE above 10% for 3 consecutive years				

Excellent
 Good
 Neutral
 Be Alert
 Watch Out



Historical Financials



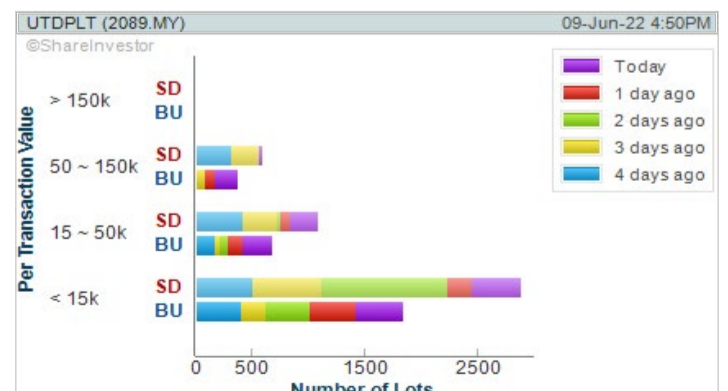
WebPro 9-Days Free Trial Registration
(worth RM9)
Sign Up Now



Key Statistics with Total Shareholder Returns

Total Shareholder Return

Period	Dividend Received	Capital Appreciation	Total Shareholder Return
Short Term Return	5 Days	-0.020	-0.14 %
	10 Days	+0.080	+0.41 %
	20 Days	-	-
Medium Term Return	3 Months	0.850	-0.27 %
	6 Months	0.800	+12.08 %
	1 Year	1.150	+13.78 %
Long Term Return	2 Years	2.000	+30.02 %
	3 Years	3.350	+48.69 %
	5 Years	6.250	+75.23 %
Annualised Return	Annualised	-	+11.87 %



Disclaimer: The information on this page is provided as a service to readers. It does not constitute financial advice and/or any investment recommendations. Past performance is not indicative of future results. We assume no liability for damages resulting from or arising out of the use of such information. It would be best if you did your own research to make your personal investment decisions wisely or consult a licenced investment advisor.

bulthaup takes care of the details so that you can enjoy a harmonious environment.



XTRA

XTRA FURNITURE SDN BHD
The Gardens Mall, Mid Valley City
2nd flr unit 236 + 237
E: kitchen@trafurniture.com, trafurniture.com/bulthaup
fb.com/bulthaupmalaysia

bulthaup

Price & Volume Distribution Charts (as at Yesterday)

Technical Analysis

DEFINITION: Shariah compliant stocks with Technical Analysis showing Bullish Momentum and Price Uptrend. The share price closed at the highest price yesterday. The typical price was higher than the previous day's typical price.

CHART GUIDE: Volume Distribution Chart is a statistical interpretation of the current sentiment on each stock in graphical format. The highest bar categorized as >150k is likely to be traded by institutions or super dealers, while the lowest bar categorized as <15k usually represents retail investors. "Buy Up" refers to more buyers snatching up the lots queued at selling price. "Sell Down" refers to sellers selling their shares to the buying queue.



ShareInvestor WebPro > Screener > Market Screener (FA & TA) > select BURSA > add criteria

A. Criteria

- > click Add Criteria
- Fundamental Analysis Conditions tab > select (i) Revenue
- Technical Analysis Conditions tab select (ii) Average Volume
- Prices & Other Conditions tab > select (iii) Last Done Price
- Prices & Other Conditions tab > select (iv) Is Shariah Compliant
- Technical Analysis Conditions tab select (v) RSI Overbought
- Technical Analysis Conditions tab select (vi) Moving Average Below Close
- Technical Analysis Conditions tab select (vii) CCI Overbought

B. Conditions (Criteria Filters)

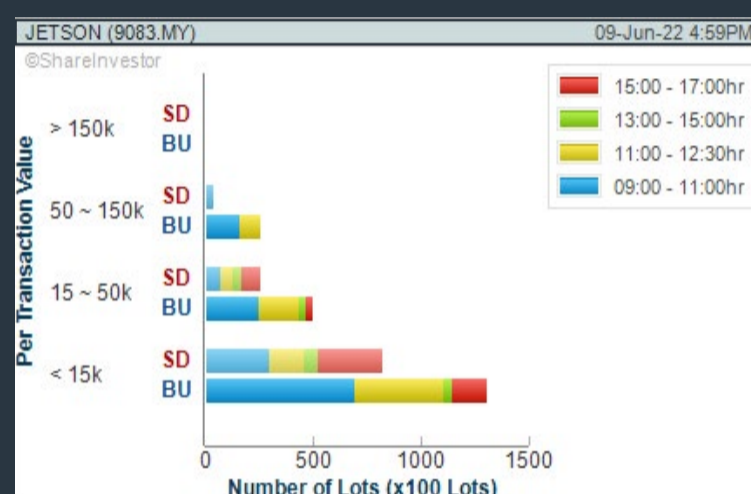
1. Revenue ("000) - select (more than) type (1) for the past select (1) financial year(s)
2. Average Volume - type (1) days average volume greater than type (10000) lots
3. Last Done Price - select (more than) type (0.3)
4. Is Shariah Compliant - select Yes
5. RSI Overbought - select RSI 1 above 99 for 1 days
6. Moving Average Below Close - select (MA) type (10) below close price for type (1) days
7. CCI Overbought - select CCI (2) above (0) for (1) days

- > click Save Template > Create New Template type (Shariah Momentum Up Stocks) > click Create
- > click Save Template as > select Shariah Momentum Up Stocks > click Save
- > click Screen Now (may take a few minutes)
- Sort By: Select (Vol) Select (Desc)
- Mouse over stock name > Charts > click C² Charts tab or Volume Distribution

KUMPULAN JETSON BERHAD (9083)

C² Chart

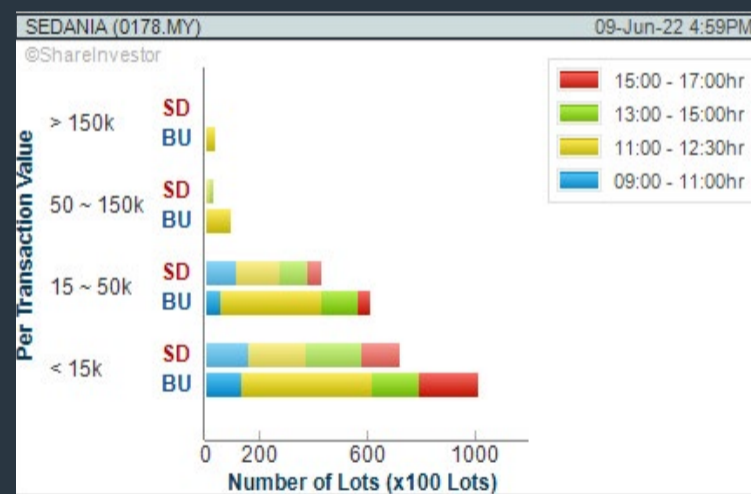
Analysis



SEDANIA INNOVATOR BERHAD (0178)

C² Chart

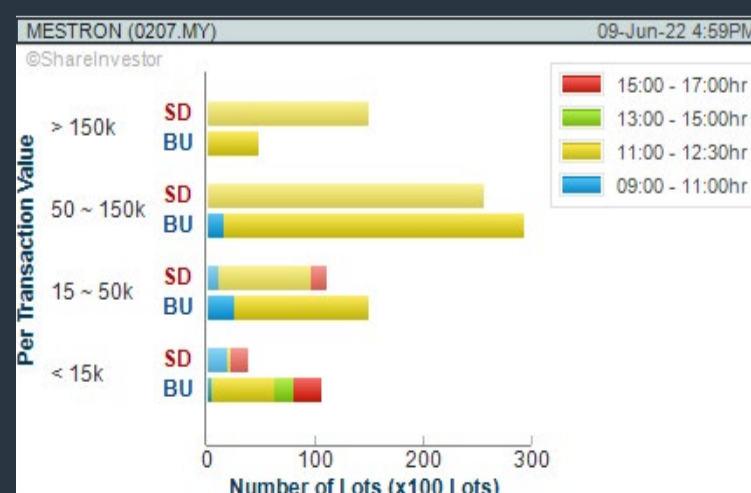
Analysis



MESTRON HOLDINGS BERHAD (0207)

C² Chart

Analysis



Disclaimer: The information on this page is provided as a service to readers. It does not constitute financial advice and/or any investment recommendations. Past performance is not indicative of future results. We assume no liability for damages resulting from or arising out of the use of such information. It would be best if you did your own research to make your personal investment decisions wisely or consult a licenced investment advisor.

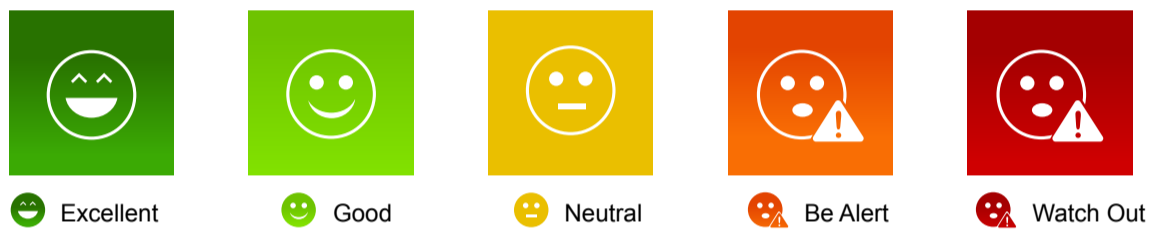
Smiley Grid

**Are you struggling to analyse financial information?
Do you find financial data overwhelming?**

Worry not, introducing our NEW feature, Smiley Grid

Smiley Grid makes the Factsheet fast and easy to understand.

It is a shortcut where key financial data have now been interpreted for you, and presented in easy-to-understand, colour coded icons.



With just a glance, you can easily identify strong or weak areas of a particular counter.

We do the analysis so you can make faster decisions.



Sign up for our 9 Days Free Trial and give it a try

9-Days FREE TRIAL WORTH (RM 9)

Price & Volume Distribution Charts (as at Yesterday)

Technical Analysis

DEFINITION: Stocks with Technical Analysis showing 5-days & 10-days Moving Average Price below Close over past 1 days and with Volume Spike

CHART GUIDE: Volume Distribution Chart is a statistical interpretation of the current sentiment on each stock in graphical format. The highest bar categorized as >150k is likely to be traded by institutions or super dealers, while the lowest bar categorized as <15k usually represents retail investors. "Buy Up" refers to more buyers snatching up the lots queued at selling price. "Sell Down" refers to sellers selling their shares to the buying queue.



ShareInvestor WebPro > Screener > Market Screener (FA & TA) > select BURSA > add criteria

A. Criteria

- > click Add Criteria
- Technical Analysis Conditions tab select (i) Moving Average Below Close (ii) Volume Spike
- Fundamental Analysis Conditions tab >select (iii) Revenue
- Prices & Other Conditions tab > select (iv) Is Shariah Compliant
- Technical Analysis Conditions tab select (v) Moving Average Below Close
- Prices & Other Conditions tab > select (vi) Last Done Price
- Technical Analysis Conditions tab select (vii) Moving Average Below Close

B. Conditions (Criteria Filters)

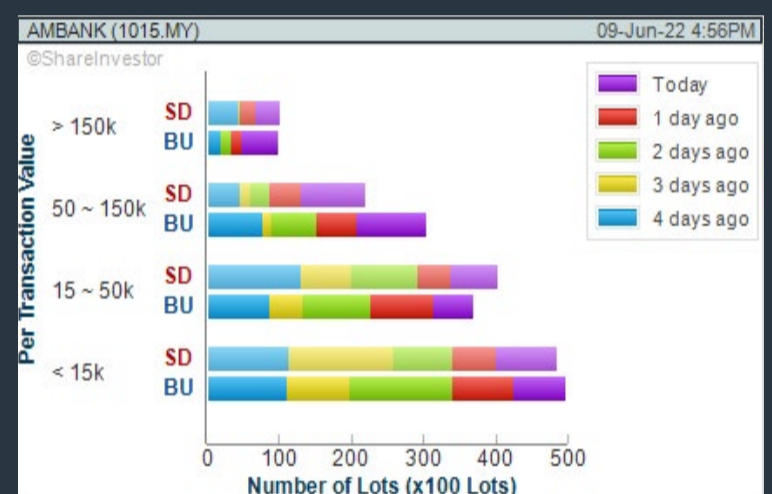
1. Moving Average Below Close - select (MA) type (5) below close price for type (3) days
2. Volume Spike - Volume type (1) greater than type (5) days average
3. Revenue ("000) - select (more than) type (1) for the past select (1) financial year(s)
4. Is Shariah Compliant - select NO
5. Moving Average Below Close - select (MA) type (10) below close price for type (1) days
6. Last Done Price - select (more than) type (0.3)
7. Moving Average Below Close - select (EMA) type (5) below close price for type (1) days

- > click Save Template > Create New Template type (Non-Shariah Hot Stocks) > click Create
- > click Save Template as > select Non-Shariah Hot Stocks > click Save
- > click Screen Now (may take a few minutes)
- Sort By: Select (Vol) Select (Desc)
- Mouse over stock name > Charts > click C² Charts tab or Volume Distribution

AMMB HOLDINGS BERHAD (1015)

C² Chart

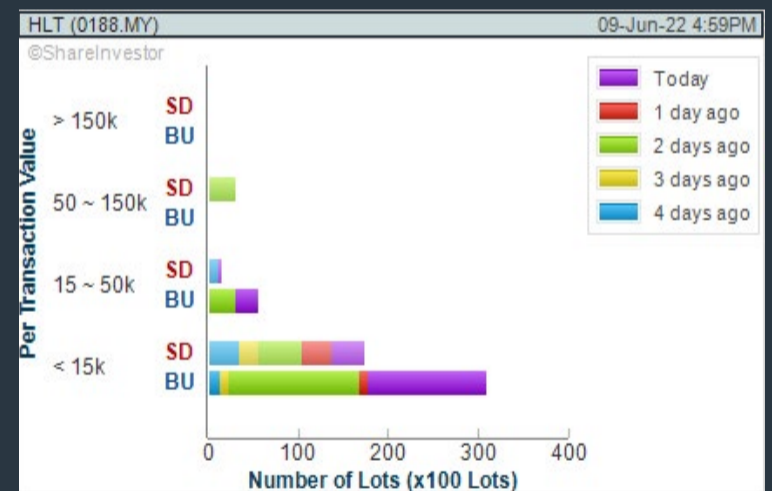
Analysis



HLT GLOBAL BERHAD (0188)

C² Chart

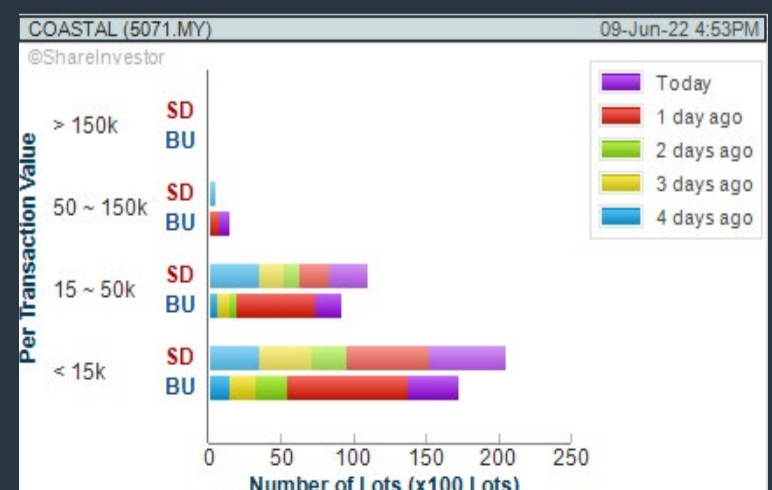
Analysis



COASTAL CONTRACTS BERHAD (5071)

C² Chart

Analysis

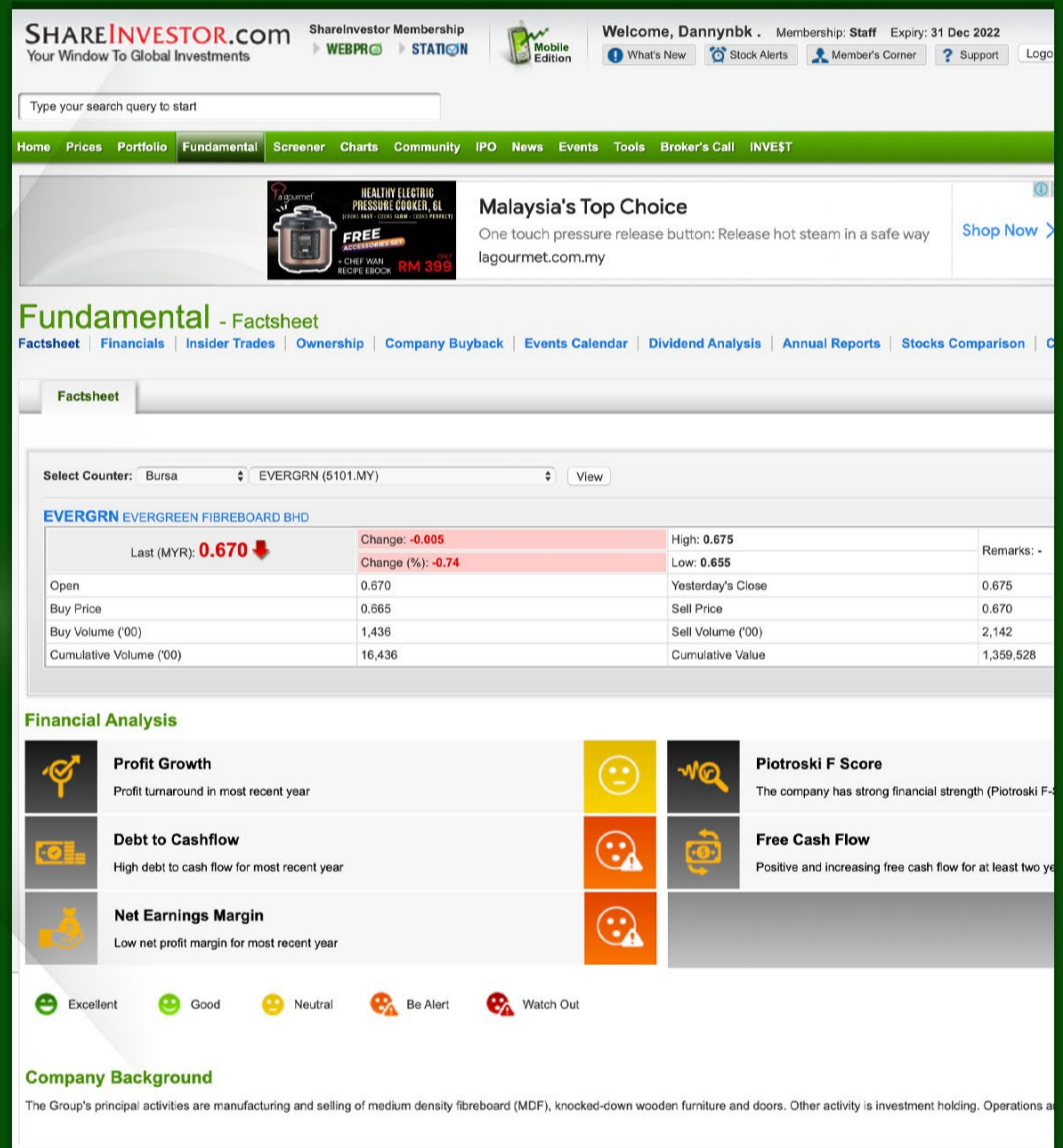
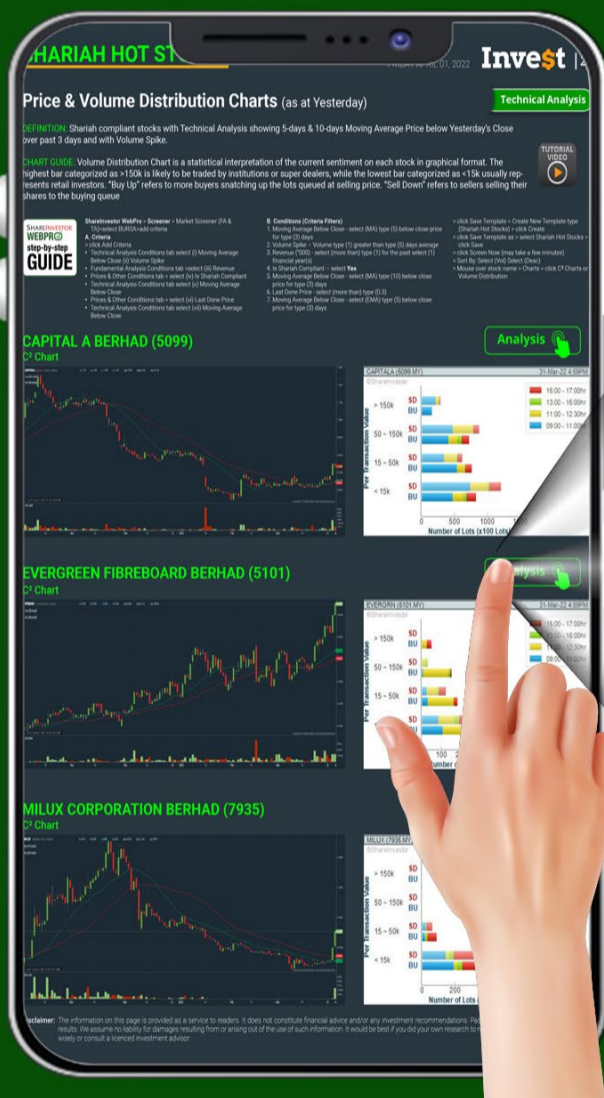


Disclaimer: The information on this page is provided as a service to readers. It does not constitute financial advice and/or any investment recommendations. Past performance is not indicative of future results. We assume no liability for damages resulting from or arising out of the use of such information. It would be best if you did your own research to make your personal investment decisions wisely or consult a licenced investment advisor.

COMPANY ANALYSIS AT YOUR FINGERTIPS

Click the Analysis buttons to access the Factsheets of any company featured on the Hot Stocks, Momentum-Up, Up-Trending, Growth and Dividend Stocks pages.

Invest with knowledge



- Company Background
- Candlestick Chart
- Current Price
- Key Statistics
- Peer Comparison
- Total Shareholder Returns
- Price Movements
- IPO performance
- Financial Reports
- Historical Price Data
- Latest News
- More



Price & Volume Distribution Charts (Over 5 trading days as at Yesterday)

Technical Analysis

DEFINITION: Stocks with Technical Analysis showing Bullish Momentum and Price Uptrend

CHART GUIDE: Volume Distribution Chart is a statistical interpretation of the current sentiment on each stock in graphical format. The highest bar categorized as >150k is likely to be traded by institutions or super dealers, while the lowest bar categorized as <15k usually represents retail investors. "Buy Up" refers to more buyers snatching up the lots queued at selling price. "Sell Down" refers to sellers selling their shares to the buying queue.



ShareInvestor WebPro > Screener > Market Screener (FA & TA) > select BURSA > add criteria

A. Criteria

- > click Add Criteria
- Fundamental Analysis Conditions tab > select (i) Revenue
- Technical Analysis Conditions tab select (ii) Moving Average Below Close
- Technical Analysis Conditions tab select (iii) Average Volume
- Prices & Other Conditions tab > select (iv) Last Done Price
- Technical Analysis Conditions tab select (v) Moving Average Below Close
- Technical Analysis Conditions tab select (v) Moving Average Bullish Crossover

B. Conditions

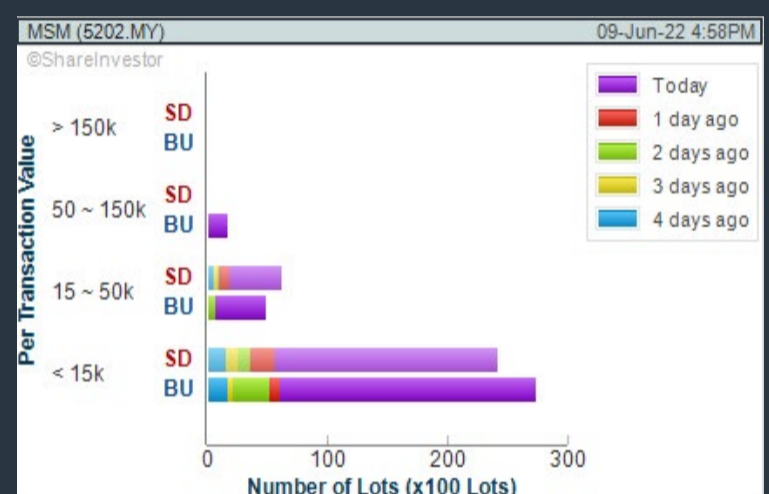
1. Revenue - select (more than) type (1) for the past select (1) financial year(s)
2. Moving Average Below Close - select (MA) type (20) below close price for type (1) days
3. Average Volume - type (5) days average volume type (10000) lots
4. Last Done Price - select (more than) type (0.3)
5. Moving Average Below Close - select (MA) type (10) below close price for type (1) days
6. Moving Average Bullish Crossover - select (MA) type (5) crossed above select (MA) type (10)

> click Save Template > Create New Template type (Non-Shariah Up-Trending Stocks) > click Create Click Save Template As > select Non-Shariah Up Trending Stocks > click Save
> click Screen Now (may take a few minutes)
Sort By: Select (Vol) Select (Desc)
Mouse over stock name > Charts > click C² Charts tab or Volume Distribution

MSM MALAYSIA HOLDINGS BERHAD (5202)

Analysis

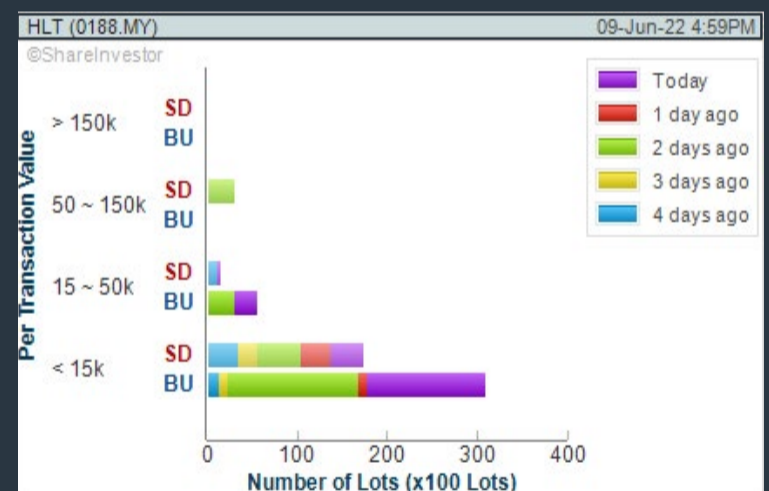
C² Chart



HLT GLOBAL BERHAD (0188)

Analysis

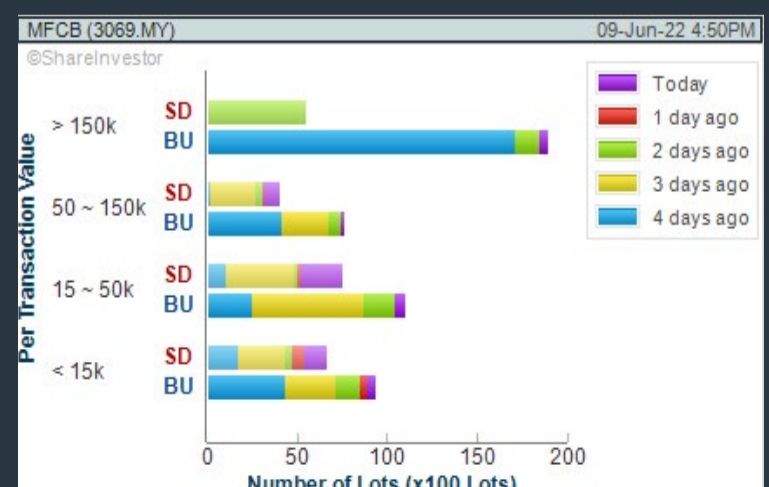
C² Chart



MEGA FIRST CORPORATION BERHAD (3069)

Analysis

C² Chart



Disclaimer: The information on this page is provided as a service to readers. It does not constitute financial advice and/or any investment recommendations. Past performance is not indicative of future results. We assume no liability for damages resulting from or arising out of the use of such information. It would be best if you did your own research to make your personal investment decisions wisely or consult a licenced investment advisor.

BURSASTATION Professional



Stock Scanning

- Technical Analysis (TA) Market Scanner
- Fundamental Analysis (FA) Market Scanner



Market Data

- Equities
- Derivatives

Monitoring

- Portfolio
- Stock Alerts
- Price Spread Calculator



Scan. Chart. Analyse.

Be The Intelligent Investor



Price Movements

- Streaming Prices
- Time & Sales
- Trade Summary Matrix
- Quote Movements
- 5 Levels Market Depth
- Historical Price Download

Charts

- Intraday Charts
- Interactive Charts
- Historical Charts
- Volume Distribution Charts



Fundamentals

- Factsheets
- Financials
- Insider Trades



Brought to you as a collaborative effort by ShareInvestor and Bursa Malaysia, **BursaStation Professional** is designed with you, the user, in mind, as a user-friendly yet full of powerful features that will appeal to investors/traders who need instant access to fundamental, technical, and trading data, anytime, anywhere. **BursaStation Professional** is a state-of-the-art Stock Market Tracker with Charting Software that places in your hands the power to make better investment decisions.

CLICK HERE TO START YOUR 14-DAYS FREE TRIAL

Price & Total Shareholder Return (as at Yesterday)

Fundamental Analysis

DEFINITION: Company revenue is growing and making good quality of earnings with positive Free Cash Flow.

CHART GUIDE: Total Shareholder Return (TSR) combines share price appreciation and distributions paid to show the total return to the shareholder expressed as a percentage.



ShareInvestor WebPro > Screener > Market Screener (FA & TA) > select BURSA > add criteria

A. Criteria

1. Fundamental Analysis Conditions tab >select (i) Free Cash Flow, (ii) Revenue Growth, (iii) Gross Profit (Earnings) Margin, (iv) Quality of Earnings, (v) Total Shareholder Returns, > click Add Criteria
2. Fundamental Analysis Conditions tab >select (vi) Total Shareholder Returns > click Add Criteria

B. Conditions (Criteria Filters)

1. Free Cash Flow - select (more than) type (1) for the past select (1) financial year(s)
2. Revenue Growth - select (more than) type (1) for the past select (1) financial year(s)
3. Gross Profit (Earnings) Margin - select (more than) type (30) % for the past select (1) financial year(s)
4. Quality of Earnings - select (more than) type (1) for the past select (1) financial year(s)
5. Total Shareholder Return - select (more than) type (5) % for the past select (3) financial year(s)
6. Total Shareholder Return - select (more than) type (5) % for the past select (5) financial year(s)

- > click Save Template > Create New Template type (Growth Companies) > click Create
- > click Save Template as > select Growth Companies > click Save
- > click Screen Now (may take a few minutes)
- > Sort By: Select (Revenue Growth) Select (Desc)
- > Mouse over stock name > Factsheet > looking for Total Shareholder Return

PETRONAS CHEMICALS GROUP BERHAD (5183)

C² Chart

Analysis



Period	Dividend Received	Capital Appreciation	Total Shareholder Return
Short Term Return	5 Days	-0.420	-4.17%
	10 Days	-0.290	-2.92%
	20 Days	-0.250	-2.53%
Medium Term Return	3 Months	0.230	+1.00%
	6 Months	0.230	+17.08%
	1 Year	0.560	+28.24%
Long Term Return	2 Years	0.680	+51.36%
	3 Years	0.860	+27.57%
	5 Years	1.450	+55.45%
Annualised Return	Annualised	-	+9.22%

TA ANN HOLDINGS BERHAD (5012)

C² Chart

Analysis

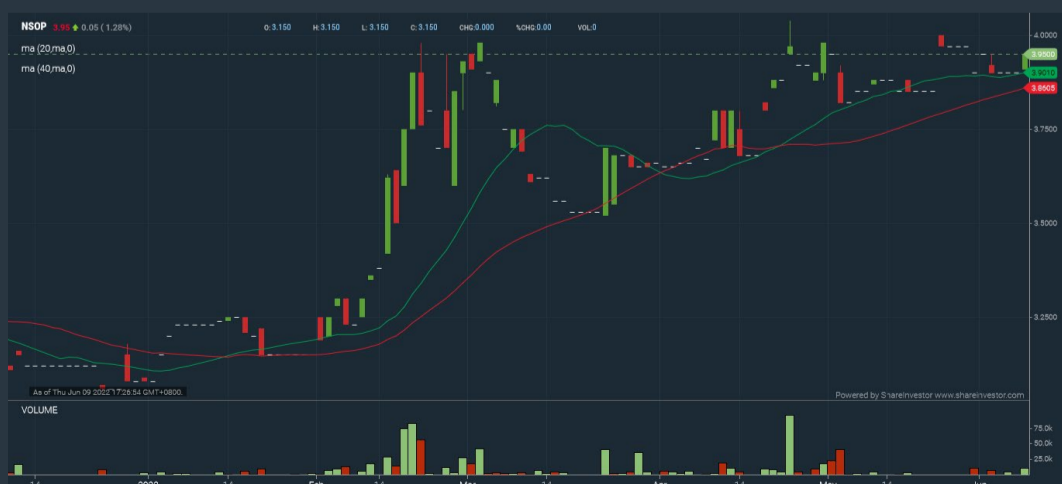


Period	Dividend Received	Capital Appreciation	Total Shareholder Return
Short Term Return	5 Days	-0.060	+0.81%
	10 Days	-0.360	-4.94%
	20 Days	-0.930	-14.24%
Medium Term Return	3 Months	0.150	-4.72%
	6 Months	0.350	+56.25%
	1 Year	0.450	+84.48%
Long Term Return	2 Years	0.600	+121.77%
	3 Years	0.650	+131.25%
	5 Years	0.800	+65.22%
Annualised Return	Annualised	-	+10.56%

NEGRI SEMBILAN OIL PALMS BERHAD (2038)

C² Chart

Analysis



Period	Dividend Received	Capital Appreciation	Total Shareholder Return
Short Term Return	5 Days	-	-
	10 Days	-0.020	-0.50%
	20 Days	+0.100	+2.60%
Medium Term Return	3 Months	+0.260	+7.05%
	6 Months	0.110	+28.48%
	1 Year	0.180	+36.62%
Long Term Return	2 Years	0.240	+53.93%
	3 Years	0.290	+31.35%
	5 Years	0.400	+9.74%
Annualised Return	Annualised	-	+1.88%

Disclaimer: The information on this page is provided as a service to readers. It does not constitute financial advice and/or any investment recommendations. Past performance is not indicative of future results. We assume no liability for damages resulting from or arising out of the use of such information. It would be best if you did your own research to make your personal investment decisions wisely or consult a licenced investment advisor.

Price & Total Shareholder Return (as at Yesterday)

Fundamental Analysis

DEFINITION: Company is paying out dividend with low or moderate leverage.

CHART GUIDE: Total Shareholder Return (TSR) combines share price appreciation and distributions paid to show the total return to the shareholder expressed as a percentage.



ShareInvestor WebPro > Screener > Market Screener (FA & TA) > select BURSA > add criteria

A. Criteria

- > click Add Criteria
- Fundamental Analysis Conditions tab >select (i) Dividend Yield (Historical)
- Fundamental Analysis Conditions tab >select (ii) Dividend Payout (Historical)
- Fundamental Analysis Conditions tab >select (iii) Total Debt To Equity
- Fundamental Analysis Conditions tab >select (iv) Total Shareholder Returns
- Fundamental Analysis Conditions tab >select (v) Total Shareholder Returns
- Fundamental Analysis Conditions tab / >select (vi) CAGR of Dividend Per Share

- Fundamental Analysis Conditions tab >select (vii) CAGR of Dividend Per Share

B. Conditions (Criteria Filters)

1. Dividend Yield - select (more than) type (1) % for the past select (1) financial year(s)
2. Dividend Payout (Historical) - select (between) type (0.5) to type (1) times for the past select (1) financial year(s)
3. Total Debt to Equity - select (less than) type (1) for the past select (1) financial year(s)
4. Total Shareholder Return - select (more than) type (5) % for the past select (3) financial year(s)
5. Total Shareholder Return - select (more than) type (5) % for the past select (5) financial year(s)

6. CAGR of Dividend Per Share - select (less than) type (30) % for the past select (5) financial year(s)
7. CAGR of Dividend Per Share - select (more than) type (1) % for the past select (5) financial year(s)

- > click Save Template > Create New Template type (Dividend Companies) > click Create
- > click Save Template as > select Dividend Companies > click Save
- > click Screen Now (may take a few minutes)
- > Sort By: Select (Dividend Yield) Select (Desc)
- > Mouse over stock name > Factsheet > looking for Total Shareholder Return

UNITED PLANTATIONS BERHAD (2089)

C² Chart

Analysis



Period	Dividend Received	Capital Appreciation	Total Shareholder Return
Short Term Return	5 Days	-0.020	-0.14 %
	10 Days	+0.060	+0.41 %
	20 Days	-	-
Medium Term Return	3 Months	0.850	-0.27 %
	6 Months	0.850	+12.08 %
	1 Year	1.150	+13.78 %
Long Term Return	2 Years	2.000	+30.02 %
	3 Years	3.350	+49.69 %
	5 Years	6.250	+75.23 %
Annualised Return	Annualised	-	+11.87 %

UCHI TECHNOLOGIES BERHAD (7100)

C² Chart

Analysis



Period	Dividend Received	Capital Appreciation	Total Shareholder Return
Short Term Return	5 Days	-0.020	-0.64 %
	10 Days	+0.080	+2.65 %
	20 Days	+0.130	+4.38 %
Medium Term Return	3 Months	+0.170	+5.80 %
	6 Months	0.090	+0.31 %
	1 Year	0.185	+5.97 %
Long Term Return	2 Years	0.345	+30.00 %
	3 Years	0.490	+24.65 %
	5 Years	0.890	+139.78 %
Annualised Return	Annualised	-	+19.11 %

FORMOSA PROSONIC INDUSTRIES (9172)

C² Chart

Analysis



Period	Dividend Received	Capital Appreciation	Total Shareholder Return
Short Term Return	5 Days	-0.080	-2.61 %
	10 Days	-0.110	-3.42 %
	20 Days	-0.060	-1.89 %
Medium Term Return	3 Months	0.200	-3.50 %
	6 Months	0.200	-6.23 %
	1 Year	0.200	+20.80 %
Long Term Return	2 Years	0.340	+139.58 %
	3 Years	0.450	+106.98 %
	5 Years	0.630	+320.22 %
Annualised Return	Annualised	-	+33.26 %

Disclaimer: The information on this page is provided as a service to readers. It does not constitute financial advice and/or any investment recommendations. Past performance is not indicative of future results. We assume no liability for damages resulting from or arising out of the use of such information. It would be best if you did your own research to make your personal investment decisions wisely or consult a licenced investment advisor.

Week: 3 Jun - 9 Jun 2022

More Brokers' Call 

AMINVESTMENT BANK <small>... See More</small>	Call	Target Price	Release Date
Leong Hup International Berhad (6633)	HOLD	RM0.50	3 Jun 2022
IHH Healthcare Berhad (5225)	HOLD	RM7.00	8 Jun 2022
Dialog Group Berhad (7277)	BUY	RM3.66	8 Jun 2022
Hibiscus Petroleum Berhad (5199)	HOLD	RM1.42	8 Jun 2022

KENANGA <small>... See More</small>	Call	Target Price	Release Date
Inari Amertron Berhad (0166)	OUTPERFORM	RM3.30	3 Jun 2022
TSH Resources Berhad (9059)	OUTPERFORM	RM1.90	8 Jun 2022
Syarikat Takaful Malaysia Keluarga Berhad (6139)	OUTPERFORM	RM4.25	9 Jun 2022

MALACCA SECURITIES SDN BHD <small>... See More</small>	Call	Target Price	Release Date
Malaysia Smelting Corporation Berhad (5916)	BUY	RM4.83	7 Jun 2022
UOA Real Estate Investment Trust (5110)	BUY	RM1.40	7 Jun 2022
AME Elite Consortium Berhad (5293)	HOLD	RM1.87	7 Jun 2022

MIDF <small>... See More</small>	Call	Target Price	Release Date
Fraser & Neave Holdings Bhd (3689)	BUY	RM30.91	7 Jun 2022
IHH Healthcare Berhad (5225)	BUY	RM7.96	8 Jun 2022
Dialog Group Berhad (7277)	BUY	RM3.96	8 Jun 2022

UOB KAYHIAN <small>... See More</small>	Call	Target Price	Release Date
Kronologi Asia Berhad (0176)	BUY	RM0.645	7 Jun 2022
George Kent (Malaysia) Berhad (3204)	BUY	RM0.745	8 Jun 2022
Success Transformer Corporation Berhad (7207)	BUY	RM0.995	9 Jun 2022
G Capital Berhad (7676)	BUY	RM0.685	9 Jun 2022
MESB Berhad (7234)	BUY	RM0.685	9 Jun 2022

Disclaimer: InveSt does not accept any liability whatsoever for any direct, indirect or consequential losses (including loss of profit) or damages that may arise from the use of information or opinions in this publication. The information and opinions in InveSt are not to be considered as an offer to sell or buy any of the securities discussed. Opinions expressed are subject to change without notice. The Brokers may, from time to time, have interests or positions in the securities mentioned. For the full report on each item listed on this page, please visit https://www.shareinvestor.com/my/brokers_call.

DEFINITION: Top 10 stocks with Technical Analysis plus Pattern Matching by 60 pre-defined indicators by the system showing a higher probability of bullish sentiment on the share price.



ShareInvestor WebPro > Screener > Predefined TA Screens > select market BURSA > Most Long Signals > click Scan Results or mouse over each company

TASCO BERHAD (5140.MY)

TASCO

Price updated at 09 Jun 2022 16:56

Last: 1.040	Change: -0.020	Volume: 4,469
	Change (%): -1.89	Range: 1.040 - 1.060

TA Scanner Results based on historical data up to 09 Jun 2022

Condition	Signal	Explanation
Bollinger Band: High Above Upper Bollinger Band	Neutral	1. High above upper bollinger band(20,2). 2. Average volume(5) is above 100,000.
Chaikin Volatility: Increasing Chaikin Volatility	Neutral	Chaikin Volatility(10,10) has been increasing for 5 days
DM: Bullish Directional Movement	Long	-DI(14) crossed below +DI(14)
Donchian Channels: High Above Upper Donchian Channels	Long	High crossed above the upper Donchian Channel(14,4)
MA: Short Term Bullish Moving Average Crossover	Long	MA(10) crossed above MA(15) within the last 1 day.
Price: Consecutive Days Gains	Long	1. Close price has been increasing over the last 5 days. 2. Average volume(5) above 100,000.
RSI: Short Term RSI 50 Bullish Crossover	Long	1. RSI(20) crossed above 50 within the last 1 day and RSI(20) 1 day ago below 50 for the last 5 days. 2. Volume above average volume(125). 3. Average volume(5) is above 100,000.

NESTCON BERHAD (0235.MY)

NESTCON

Price updated at 09 Jun 2022 16:57

Last: 0.440	Change: -0.025	Volume: 52,610
	Change (%): -5.38	Range: 0.440 - 0.460

TA Scanner Results based on historical data up to 09 Jun 2022

Condition	Signal	Explanation
Candlestick: Bullish Hammer	Long	Bullish: Hammer
Volume: 10 Days large value Buy Up trade	Long	1. 150K value Buy Up greater than Sell Down by 20% for 10 days. 2. 50K-100K value Buy Up greater than Sell Down by 20% for 10 days. 3. Average volume(10) is above 1000000
Volume: 5 Days large value Buy Up trade	Long	1. 150K value Buy Up greater than Sell Down by 20% for 5 days. 2. 50K-100K value Buy Up greater than Sell Down by 20% for 5 days. 3. Average volume(10) is above 1000000
Williams %R: Bullish Williams %R	Long	1. Williams %R(26) between -80 and -100. 2. Average volume(5) is above 100,000.

UWC BERHAD (5292.MY)

UWC

Price updated at 09 Jun 2022 16:54

Last: 3.170	Change: +0.030	Volume: 10,923
	Change (%): +0.96	Range: 3.110 - 3.180

TA Scanner Results based on historical data up to 09 Jun 2022

Condition	Signal	Explanation
Candlestick: Bullish Harami	Long	Bullish: Harami
MA: Short Term Bullish Moving Average Crossover	Long	MA(10) crossed above MA(15) within the last 1 day.
Volume: 10 Days large value Buy Up trade	Long	1. 150K value Buy Up greater than Sell Down by 20% for 10 days. 2. 50K-100K value Buy Up greater than Sell Down by 20% for 10 days. 3. Average volume(10) is above 1000000

ARTRONIQ BERHAD (0038.MY)

ARTRONIQ

Price updated at 09 Jun 2022 16:59

Last: 0.695	Change: -	Volume: 43,346
	Change (%): -	Range: 0.680 - 0.710

TA Scanner Results based on historical data up to 09 Jun 2022

Condition	Signal	Explanation
Bollinger Band: High Above Upper Bollinger Band	Neutral	1. High above upper bollinger band(20,2). 2. Average volume(5) is above 100,000.
DM: Bullish Directional Movement	Long	-DI(14) crossed below +DI(14)
Donchian Channels: High Above Upper Donchian Channels	Long	High crossed above the upper Donchian Channel(14,4)
MA: Short Term Bullish Moving Average Crossover	Long	MA(10) crossed above MA(15) within the last 1 day.
RSI: Short Term RSI 50 Bullish Crossover	Long	1. RSI(20) crossed above 50 within the last 1 day and RSI(20) 1 day ago below 50 for the last 5 days. 2. Volume above average volume(125). 3. Average volume(5) is above 100,000.
Volume: Volume Spike	Long	1. Volume is more than 500% above average volume(10). 2. Volume above 200000. 3. Close price above 0.10

NWP HOLDINGS BERHAD (5025.MY)

NWP

Price updated at 09 Jun 2022 16:58

Last: 0.245	Change: -	Volume: 45,026
	Change (%): -	Range: 0.240 - 0.250

TA Scanner Results based on historical data up to 09 Jun 2022

Condition	Signal	Explanation
Bollinger Band: Bullish Lower Bollinger Band Support	Long	1. Low 1 day ago below lower bollinger band(20,2). 2. Close above close 1 day ago. 3. Average volume(5) is above 100,000.
Bollinger Band: High Above Upper Bollinger Band	Neutral	1. High above upper bollinger band(20,2). 2. Average volume(5) is above 100,000.
DM: Bullish Directional Movement	Long	-DI(14) crossed below +DI(14)
MA: Bullish Price Crossover	Long	1. Close price crossed above MA(40) within the last 1 day. 2. Previous day close price is below the MA(10) for the last 5 days
MACD: Bullish MACD Crossover	Long	1. MACD(12,26) diff line crossed above the MACD(12,26) signal line. 2. MACD Histogram(12,26) is above 0.
Parabolic SAR: Bearish Parabolic SAR Reversal	Neutral	1. Parabolic SAR 1 day ago above close price 1 day ago for the last 5 days. 2. Parabolic SAR below close price
RSI: Short Term RSI 50 Bullish Crossover	Long	1. RSI(20) crossed above 50 within the last 1 day and RSI(20) 1 day ago below 50 for the last 5 days. 2. Volume above average volume(125). 3. Average volume(5) is above 100,000.

Disclaimer: The information on this page is provided as a service to readers. It does not constitute financial advice and/or any investment recommendations. Past performance is not indicative of future results. We assume no liability for damages resulting from or arising out of the use of such information. It would be best if you did your own research to make your personal investment decisions wisely or consult a licenced investment advisor.



POWER ROOT BERHAD
(7237.MY)

PWROOT

Price updated at 09 Jun 2022 16:56

Last: 1.790	Change: +0.010	Volume: 15,274
	Change (%): +0.56	Range: 1.770 - 1.810

TA Scanner Results based on historical data up to 09 Jun 2022

Condition	Signal	Explanation
MA: Short Term Bullish Moving Average Crossover	Long	MA(10) crossed above MA(15) within the last 1 day.
Price: Consecutive Days Gains	Long	1. Close price has been increasing over the last 5 days. 2. Average volume(5) above 100,000.
Price: New 52 Week High	Long	1. Stock reach a new 52 week high. 2. Average volume(30) is above 50000.
Volume: 10 Days large value Buy Up trade	Long	1. 150K value Buy Up greater than Sell Down by 20% for 10 days. 2. 50K-100K value Buy Up greater than Sell Down by 20% for 10 days. 3. Average volume(10) is above 1000000
Williams %R: Bearish Williams %R	Short	1. Williams %R(26) between 0 and -20. 2. Average volume(5) is above 100,000.



LINGKARAN TRANS KOTA HOLDINGS
(6645.MY)

LITRAK

Price updated at 09 Jun 2022 16:58

Last: 4.870	Change: -	Volume: 10,306
	Change (%): -	Range: 4.840 - 4.910

TA Scanner Results based on historical data up to 09 Jun 2022

Condition	Signal	Explanation
Bollinger Band: Bullish Long Term Volatility Breakout and Trending	Long	1. Close price above upper bollinger band(33,1). 2. Volume above average volume(50). 3. Average volume(50) is above 300,000.
Bollinger Band: Bullish Short Term Volatility Breakout and Trending	Long	1. Close price above upper bollinger band(33,1). 2. Volume above average volume(10). 3. Average volume(10) is above 300,000.
Bollinger Band: High Above Upper Bollinger Band	Neutral	1. High above upper bollinger band(20,2). 2. Average volume(5) is above 100,000.
Candlestick: Bullish Engulfing	Long	Bullish: Engulfing
Chaikin Volatility: Increasing Chaikin Volatility	Neutral	Chaikin Volatility(10,10) has been increasing for 5 days
MACD: Bullish MACD Crossover	Long	1. MACD(12,26) diff line crossed above the MACD(12,26) signal line. 2. MACD Histogram(12,26) is above 0.
Price: New 52 Week High	Long	1. Stock reach a new 52 week high. 2. Average volume(30) is above 50000.
Williams %R: Bearish Williams %R	Short	1. Williams %R(26) between 0 and -20. 2. Average volume(5) is above 100,000.



BONIA CORPORATION BERHAD
(9288.MY)

BONIA

Price updated at 09 Jun 2022 16:59

Last: 2.640	Change: -0.050	Volume: 4,075
	Change (%): -1.86	Range: 2.600 - 2.720

TA Scanner Results based on historical data up to 09 Jun 2022

Condition	Signal	Explanation
Bollinger Band: High Above Upper Bollinger Band	Neutral	1. High above upper bollinger band(20,2). 2. Average volume(5) is above 100,000.
Donchian Channels: High Above Upper Donchian Channels	Long	High crossed above the upper Donchian Channel(14,4)
Price: New 52 Week High	Long	1. Stock reach a new 52 week high. 2. Average volume(30) is above 50000.



KEJURUTERAAN ASASTERA BERHAD
(0193.MY)

KAB

Price updated at 09 Jun 2022 16:53

Last: 0.400	Change: -	Volume: 50,232
	Change (%): -	Range: 0.390 - 0.400

TA Scanner Results based on historical data up to 09 Jun 2022

Condition	Signal	Explanation
Bollinger Band: Low Below Lower Bollinger Band	Neutral	1. Low below lower bollinger band(20,2). 2. Average volume(5) is above 100,000.
CCI: Bullish CCI Oversold And Reversing	Long	1. CCI(26) below -100 and CCI(26) 1 day ago decreasing for the last 3 days. 2. CCI(26) above CCI(26) 1 day ago
Chaikin Volatility: Decreasing Chaikin Volatility	Neutral	Chaikin Volatility(10,10) has been decreasing for 5 days
Volume: 10 Days large value Buy Up trade	Long	1. 150K value Buy Up greater than Sell Down by 20% for 10 days. 2. 50K-100K value Buy Up greater than Sell Down by 20% for 10 days. 3. Average volume(10) is above 1000000
Volume: 5 Days large value Buy Up trade	Long	1. 150K value Buy Up greater than Sell Down by 20% for 5 days. 2. 50K-100K value Buy Up greater than Sell Down by 20% for 5 days. 3. Average volume(10) is above 1000000
Williams %R: Bullish Williams %R	Long	1. Williams %R(26) between -80 and -100. 2. Average volume(5) is above 100,000.



PENTAMASTER CORPORATION BERHAD
(7160.MY)

PENTA

Price updated at 09 Jun 2022 16:59

Last: 3.750	Change: -0.080	Volume: 15,689
	Change (%): -2.09	Range: 3.700 - 3.820

TA Scanner Results based on historical data up to 09 Jun 2022

Condition	Signal	Explanation
Candlestick: Bullish Hammer	Long	Bullish: Hammer
Candlestick: Bullish Harami	Long	Bullish: Harami
Parabolic SAR: Bullish Parabolic SAR Reversal	Neutral	1. Parabolic SAR 1 day ago below close price 1 day ago for the last 5 days. 2. Parabolic SAR above close price
Volume: 10 Days large value Buy Up trade	Long	1. 150K value Buy Up greater than Sell Down by 20% for 10 days. 2. 50K-100K value Buy Up greater than Sell Down by 20% for 10 days. 3. Average volume(10) is above 1000000
Volume: 5 Days large value Buy Up trade	Long	1. 150K value Buy Up greater than Sell Down by 20% for 5 days. 2. 50K-100K value Buy Up greater than Sell Down by 20% for 5 days. 3. Average volume(10) is above 1000000
Williams %R: Bearish Williams %R	Short	1. Williams %R(26) between 0 and -20. 2. Average volume(5) is above 100,000.

Disclaimer: The information on this page is provided as a service to readers. It does not constitute financial advice and/or any investment recommendations. Past performance is not indicative of future results. We assume no liability for damages resulting from or arising out of the use of such information. It would be best if you did your own research to make your personal investment decisions wisely or consult a licenced investment advisor.

Condition	Signal	Explanation
Volume: 10 Days large value Buy Up trade	Long	1. 150K value Buy Up greater than Sell Down by 20% for 10 days. 2. 50K-100K value Buy Up greater than Sell Down by 20% for 10 days. 3. Average volume(10) is above 1000000
Volume: 5 Days large value Buy Up trade	Long	1. 150K value Buy Up greater than Sell Down by 20% for 5 days. 2. 50K-100K value Buy Up greater than Sell Down by 20% for 5 days. 3. Average volume(10) is above 1000000

MALAYSIA HAS RM3 BIL IPO PIPELINE IN 2H22 - MAYBANK IB

According to Maybank Investment Bank (Maybank IB) chief executive officer Datuk Fad'l Mohamed, the Malaysian initial public offering (IPO) pipeline in 2H22 is valued at around RM3 billion. Across the wider equity capital market (ECM), the investment bank is also seeing some traction in the merger and acquisition (M&A) and private equity (PE) space. He was speaking at a press conference in conjunction with Maybank Invest Asean 2022 conference. There are still a lot of deal activities happening in the market. There is a strong ECM pipeline coming through, year to date with around nine IPOs. Going forward in 2H22, he is seeing a total deal value of about RM3 billion on ECM coming through in sectors like consumer, retail, general industrial, TMT (technology, media and telecommunications) and transport and logistics. On the M&A side, there is a lot of restructuring activities particularly among some of the GLCs and GLICs. There is also a lot of traction on the PE space, with buy-sell opportunities coming in, and also in-country consolidation. Meanwhile, the local debt capital market (DCM) has also remained stable with a full-year outlook of RM110 billion. This compares with RM114 billion recorded in 2021, according to

Securities Commission Malaysia's data. On DCM, he sees a potential of RM6.8 billion coming up in 2H22, and potential ESG-linked alone is over RM6 billion. The investment bank has completed 33 issuances totalling RM6.3 billion, of which sustainability issuance alone is RM2.1 billion. On sustainability-linked instruments, the investment bank is seeing opportunities for key projects that fall within the category, coupled with ample liquidity looking for such green assets. The other aspect is for some companies looking at transitioning, sustainability-tied instruments. Attractive proposition for a lot of clients to raise capital with clear targets in terms of the pathway of ESG. And on the demand side, a lot of investors are looking at this asset class, and continue to have a strong appetite to take up ESG-related papers, sustainability-tied instruments. With economic recovery, with refinancing of large maturities coming through this year and next, the environment is definitely conducive for capital raising.

MALAYSIA 2H EQUITIES OUTLOOK HINGES ON GLOBAL RISK APPETITE - HSBC

According to HSBC global private banking and wealth Southeast Asia chief investment officer James Cheo, the Malaysian equities market outlook in 2H22 is likely to depend heavily on global appetite for risk assets, with selective investment opportunities in beneficiaries of economic reopening and commodities sectors. The bank is currently neutral on Malaysia equities, which are really tied in to the general risk sentiment in the global economy, and at this stage the risk appetite in the world economy is still very fragile. Speaking at the HSBC 2H22 Investment Outlook briefing, he said the market may reassess the Malaysian market again when there is a more concrete kind of improvement in the global dynamics, particularly on how the recovery is in the picture of inflation. He acknowledged that Malaysia is on a “fairly solid” growth path given the Southeast Asian nation’s well-diversified export base from crude oil, palm oil as well as playing a prominent role in the global semiconductor supply chain. Malaysia's economy grew 5% in the first quarter of this year thanks to improvements in labour market, domes-

tic and external demand amid easing pandemic restrictions. This came after a 3.1% gross domestic product (GDP) growth last year. Malaysia's GDP is expected to grow 5.5% this year thanks to tailwinds from improving manufacturing activities and favourable commodities prices. This has taken into account an expectation for another 50 basis points overnight policy rate hike this year, with Bank Negara Malaysia potentially ending 2022 with a benchmark interest rate of 2.5%. In terms of foreign exchange outlook, while the ringgit has endured high volatility in 1H22, the domestic currency will likely stabilise in 2H22 and trade around 4.2800 against the US dollar by end of this year. With the impact of pandemic restrictions receding and reopening of the economy, private consumption is going to bounce back, investments are likely to also be quite robust. Therefore, there are several selective investment opportunities, particularly in sectors associated with reopening, consumption, banking, commodities and semiconductor. Although the bank's outlook is neutral on Malaysian equities, there are selective opportunities, because various parts of the economy are actually doing very well.

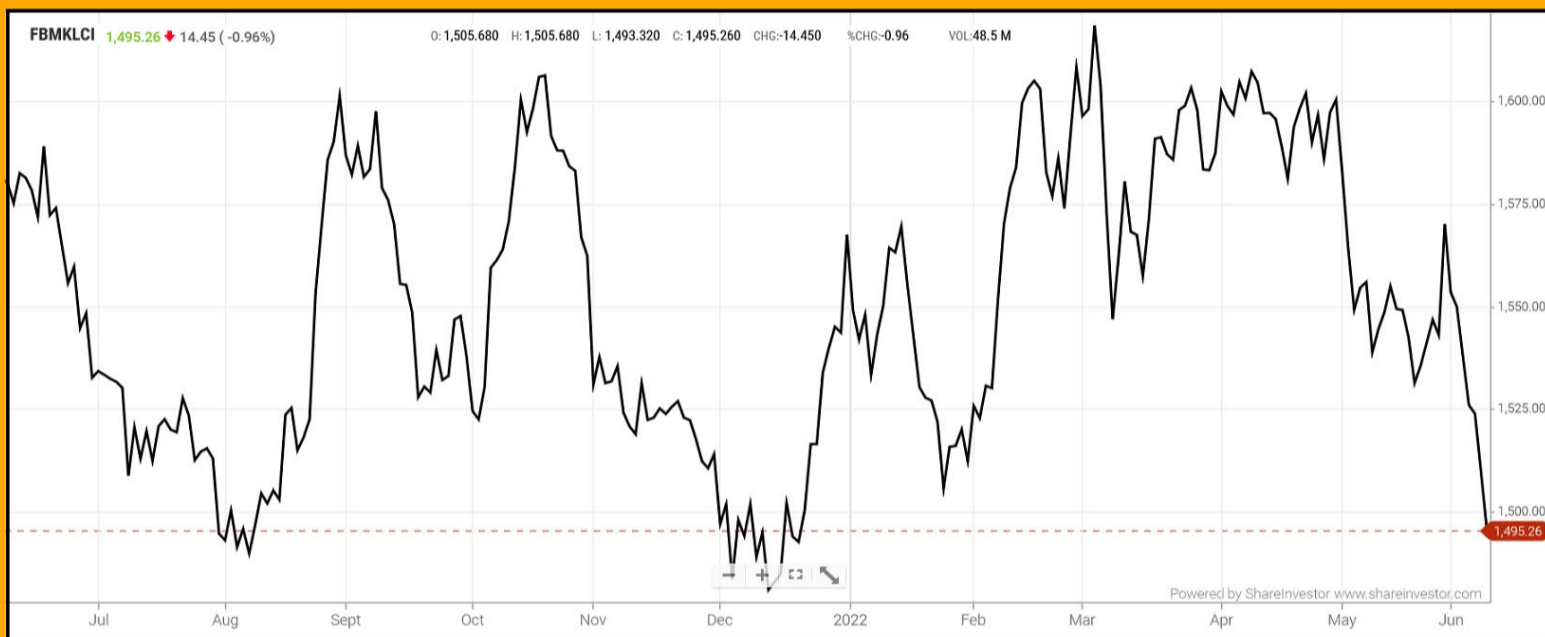
FOREIGN FUNDS PURCHASE RM477.5MIL NET OF LOCAL EQUITIES - MIDF

According to MIDF research data, the foreign inflow turned positive on Bursa Malaysia for the week ended June 3, 2022 with net purchases of RM477.5mil. This was in line with the swing to a positive inflow in Asian markets after eight weeks of net outflow. This was owing to the US dollar index (DXY) losing appeal as forecasts of the US non-farm payrolls were trimmed vigorously. Based on the provisional aggregate data for the seven Asian exchanges that MIDF tracks, investors classified as "foreign" bought US\$2.3bil last week. On the local bourse, net buying from foreign investors was recorded from Monday to Wednesday. The heaviest net inflow came on Tuesday with RM320.8mil net of local equities bought by foreigners. Meanwhile, local retailers remained net sellers with a net outflow of RM121.4mil. Local institutions were net sellers for a fourth consecutive week to the tune

of RM356.1mil. In terms of participation, all investor classes except for local retailers showed an improvement for the week. Foreign investors and local institutions saw an increase in the average daily trade value (ADTV) by 110.3% and +24% respectively. Meanwhile, local retailers posted a decline of 2.5% in ADTV.

EYE ON THE MARKETS

This week, on Friday (10June), the Ringgit opened at 4.3990 against the USD from 4.3975 on Tuesday (7June). Meanwhile, the Ringgit was 3.1849 to the Sing Dollar on Friday (10June). On Tuesday (7June), the FBM KLCI opened at 1538.74. As at Friday (10June) 10:00am, the FBM KLCI is down 43.71 points for the week at 1495.03. Over in US, the overnight Dow Jones Industrial Average closed down 638.11 points (-1.94%) to 32,272.79 whilst the NASDAQ shed 322.05 points (-2.75%) to 11,754.23.



KLCI 1 Year Chart



SHAREINVESTOR STATION

The advanced analytics software designed for today's active traders

- Fully Customisable . Powerful Charting .
- Multiple Platform Access . High Speed Updates .
- Price Movements . Screener (FA & TA)

[click here to start your 18 days free trial](#)

Over 5 trading days



ShareInvestor WebPro (www.shareinvestor.com/my)

1. Price > Stock Prices
2. Select Market: NASDAQ / NYSE / IDX / SET / HKEX / SGX (One bourse at a time)
3. select Stocks Tab
4. select Ranking Top Gainers or Top Losers (Over 5 Trading Days)
5. Mouse over Column Layout > select Edit Customs > select Name > select Last Done Price > select 5 Days Change > select 52 Weeks High > select 52 Weeks Low > Mouse Over Column Layout > select Custom

NASDAQ (USD)

Top Gainers

Name	Last Done	Change Over 5 Days	52 Weeks High	52 Weeks Low
TURNING POINT THERAPEUTICS INC	74.640	+40.480	83.060	23.770
MIRATI THERAPEUTICS INC	60.490	+20.230	195.990	32.960
SHOCKWAVE MEDICAL INC	185.110	+18.110	249.730	113.360
OASIS PETROLEUM INC	176.050	+16.990	178.250	77.733
ARGENX SE SPON ADR EACH REP 1 ORD SHS	330.300	+15.040	356.780	249.500

Top Losers

Name	Last Done	Change Over 5 Days	52 Weeks High	52 Weeks Low
BOOKING HOLDINGS INC	2,277.840	-94.520	2,715.660	1,796.450
MERCADOLIBRE INC	748.405	-88.335	1,970.130	640.000
TESLA INC	719.120	-55.880	1,243.490	593.500
REGENERON PHARMACEUTICALS INC	575.480	-55.220	747.421	501.690
CREDIT ACCEPTANCE CORPORATION	544.180	-49.390	703.265	387.020

NYSE (USD)

Top Gainers

Name	Last Done	Change Over 5 Days	52 Weeks High	52 Weeks Low
TEXAS PACIFIC LAND CORPORATION	1,719.450	+86.780	1,756.000	946.290
AUTOZONE INC	2,101.150	+43.110	2,267.400	1,371.140
CABLE ONE INC	1,312.970	+24.380	2,136.135	1,049.810
ALIBABA GROUP HOLDING LTD SPON ADS EACH REP 8 ORD SHS	109.900	+16.690	230.890	73.280
LAREDO PETROLEUM INC	114.830	+13.850	120.860	36.250

Top Losers

Name	Last Done	Change Over 5 Days	52 Weeks High	52 Weeks Low
BERKSHIRE HATHAWAY INC	452,260.000	-15,390.000	544,389.260	407,773.230
NVR INC	4,338.020	-124.740	5,982.445	3,998.000
METTLER-TOLEDO INTERNATIONAL INC	1,254.540	-71.780	1,714.750	1,168.310
MARKEL CORP	1,346.630	-41.810	1,519.245	1,155.000
ROPER TECHNOLOGIES INC	406.230	-35.210	505.000	402.055

IDX (Rupiah)

Top Gainers

Name	Last Done	Change Over 5 Days	52 Weeks High	52 Weeks Low
BAYAN RESOURCES TBK.	58,900.000	+4725.000	62,000.000	13,350.000
DIAN SWASTATIKA SENTOSA TBK	36,750.000	+2825.000	56,400.000	9,100.000
UNITED TRACTORS TBK.	32,400.000	+775.000	33,375.000	18,525.000
INDOSTERLING TECHNOMEDIA TBK.	5,800.000	+750.000	10,200.000	1,600.000
INDOSAT TBK.	6,425.000	+625.000	8,300.000	5,000.000

Top Losers

Name	Last Done	Change Over 5 Days	52 Weeks High	52 Weeks Low
SOLUSI TUNAS PRATAMA TBK.	40,700.000	-1,300.000	70,975.000	7,000.000
DCI INDONESIA TBK.	35,000.000	-1,250.000	60,300.000	33,075.000
M CASH INTEGRASI TBK.	13,150.000	-1,150.000	15,000.000	6,200.000
MULTI BINTANG INDONESIA TBK.	10,275.000	-575.000	11,600.000	6,775.000
TEMAS TBK.	2,700.000	-520.000	3,360.000	216.000

SET (Thai Baht)

Top Gainers

Name	Last Done	Change Over 5 Days	52 Weeks High	52 Weeks Low
JTS	287.000	+28.000	594.000	16.500
CPH	42.750	+23.750	42.750	3.100
OHTL	350.000	+19.000	398.000	300.000
PTTEP	174.000	+7.500	178.500	100.500
YUASA	21.500	+7.500	23.900	13.600

Top Losers

Name	Last Done	Change Over 5 Days	52 Weeks High	52 Weeks Low
DELTA	319.000	-17.000	790.000	313.000
THG	56.500	-7.250	99.500	24.900
ADVANC	212.000	-5.000	242.000	169.000
AEONTS	186.000	-5.000	209.000	168.000
CBG	106.500	-3.500	156.000	96.750

HKEX (HKD)

Top Gainers

Name	Last Done	Change Over 5 Days	52 Weeks High	52 Weeks Low
BILIBILI INC	233.200	+51.200	1,052.000	125.000
TENCENT HOLDINGS LIMITED	394.800	+35.800	590.446	297.000
PHARMARON BEIJING CO LTD	73.400	+33.318	92.867	29.788
JD.COM INC	249.000	+27.600	365.000	160.100
ASYMCHAM LABORATORIES (TIANJIN) CO	173.300	+24.300	388.000	139.000

Top Losers

Name	Last Done	Change Over 5 Days	52 Weeks High	52 Weeks Low
ORIENT OVERSEAS INT	243.200	-23.200	284.800	111.300
SUNNY OPTICAL TECHNOLOGY GROUP	116.800	-4.400	259.400	93.550
HANG SENG BANK	135.700	-3.500	169.500	131.000
CLOUD VILLAGE INC	70.750	-3.200	205.800	54.100
QINGDAO AINNOVATION TECH GP CO LTD	21.050	-2.350	27.000	7.570

SGX (SGD)

Top Gainers

Name	Last Done	Change Over 5 Days	52 Weeks High	52 Weeks Low
JARDINE C&C	31.800	+2.800	31.840	18.930
JMH USD	58.890	+1.860	65.510	49.980
SHANGRI-LA HKD	6.250	+0.280	7.850	5.470
ISETAN	3.750	+0.250	4.780	3.320
DFIRG USD	2.910	+0.150	4.370	2.310

Top Losers

Name	Last Done	Change Over 5 Days	52 Weeks High	52 Weeks Low
UOB	28.050	-0.850	33.330	25.280
DBS	30.360	-0.690	37.490	29.180
UOI	6.790	-0.380	7.170	6.545
VENTURE	17.540	-0.300	19.700	16.240
CORTINA	4.370	-0.290	3.522	1.569

HEADED SOUTH



Pankaj C Kumar

Pankaj is a former CIO and Head of Research, presently focused on economic, market and corporate analyses. The views expressed here are entirely the writer's own.

After cutting the global GDP growth estimate to 3.2% in April from 4.1% in January, the World Bank was in the news again this week as it slashed the growth estimates yet again, this time to 2.9%, as “the world economy is again in danger”. In its Global Economic Prospect report this week, the World Bank President, David Malpass, warned of above-average inflation and below-average growth ahead and this could have a devastating impact on low and middle-income economies. As stagflation fears grow, the World Bank calls for supply disruption to be addressed aggressively to tackle high inflation prints. The World Bank now sees US GDP growth at just 2.5% from 3.7% previously while China and the Euro-area will see a growth of 4.3% and 2.5% respectively. The Russian invasion of Ukraine will see Moscow paying a heavy economic price as its economy is set to contract 8.9% this year while Ukraine will see a steep 45.1% plunge in its GDP this year. In a related development, the Organisation for Economic Cooperation and Development (OECD) too cut the 2022 global economic growth forecast to just 3.0% from 4.5% previously and reduced growth in 2023 to 2.8% from 3.2% estimated earlier.

ECONOMY

it is not all gloomy on the economic front as the J.P.Morgan Global Composite Output Index for May improved marginally to 51.5 from 51.2 as the opening up of China's lockdown measures helped to boost the rate of expansion. However, the S&P Global Eurozone Purchasing Managers' Index (PMI) Composite Output Index for May dropped to 54.8 from 55.8 in April. The US labour market report was a mixed bag as Non-Farm Payrolls came in at 290,000, ahead of market estimates of 325,000 but well below the preceding month's revised 436,000 jobs. The unemployment rate stayed flat at 3.6%, while Average Hourly Earnings grew 5.2% y-o-y from the 5.5% in April. In other key US economic data, the Institute of Supply Management (ISM) Services PMI for May fell to 55.9 against the market forecast of a 56.4 print and 57.1 in April.

Out of China, external trade figures for May were relatively decent as exports grew 16.9% y-o-y while imports expanded by 4.1%, both beating market expectations of an 8% and 2% growth respectively.

Up north, Thailand's Consumer Price Index (CPI) for May went up to another level as headline inflation surged to a 14-year high, rising by 7.1% y-o-y from 4.6% in April. However, core inflation rose at a more modest pace, rising by 2.3% y-o-y against 2.0% y-o-y growth in the preceding month. The higher inflation print also prompted the Bank of Thailand (BoT) to raise its inflation forecast to 6.2% for the year, while the GDP forecast was revised to 3.3% from 3.2%. Meanwhile, the BoT maintained the key benchmark policy rate at 0.5% but warned that the current low rates are no longer necessary given the upside of the economy and inflationary threat. The Philippines too saw higher inflation print as the headline inflation rate rose to 5.4% y-o-y in May from 4.9% in April. Downunder, the Reserve Bank of Australia (RBA) accelerated the pace of rate hike as it moved the benchmark Cash Rate by 50bps to 0.85%, a move that surprised the market.

Locally, Malaysia's international reserves as at May 31, 2022, rose by US\$1.4bil to US\$112.8bil. In Ringgit terms, reserves improved by RM6.11bil to RM474.22bil from RM468.11bil as at May 13, 2022. Meanwhile, RM0.5bil net foreign inflow into the fixed income market

was recorded last month, reversing the net outflow of RM6.2bil over the past two months. In other news, Malaysia is expected to table the long-awaited Fiscal Responsibility Bill at the upcoming Parliament session. Once passed, the Fiscal Responsibility Act (FRA) will allow the government to broaden the current tax base, which includes measures to tax the shadow economy, better tax compliance, and administration to boost the nation's coffers. In a related development, the Deputy Secretary-General of the Treasury announced that there will be no new taxes, including the reintroduction of the Goods and Service Tax (GST) until the economy is firmly on track.

In economic data, Malaysia's April unemployment rate dipped to 3.9% as the number of employed persons increased by 84,100 to 15.85mil from 15.77mil in March, while the number of unemployed persons declined by 19,900 to 649,300 from 669,200 in the preceding month. Other economic data released this week showed a strong performance in the Wholesale and Retail Trade as sales valued surged 15.2% y-o-y to RM128bil. Retail Trade jumped 20.9% y-o-y to RM53.6bil, while Wholesale Trade and Motor Vehicles posted 11.5% and 11.3% growth y-o-y to RM59bil and RM15.4bil respectively.

CORPORATE

Fraser & Neave Holdings announced plans to take its associate company Cocoland Holdings private in a deal worth some RM488.2mil or RM1.50 per share. In other news, IHH Healthcare took steps to monetise its investment in IMU Health SB, the owner of IMU Education, IMC Education, and IMU Healthcare, with the sale of the company to Inbound Education Holdings SB for RM1.24bil cash. In addition, IHH Healthcare is also selling a hospital that is currently under construction to Columbia Asia SB for a net consideration of RM101mil.

Meanwhile, CapitaLand Malaysia Trust is moving away from its traditional stronghold in retail assets by acquiring two plots of industrial properties with some 335,000 square feet of net lettable area located at Sungai Jawi, Penang for RM80mil. Dialog was also in the news this week as it acquired a 100% stake in Pacific Orient Energy Corporation

for US\$38.7mil or RM170.3mil, which has a 50.01% stake in a production upstream onshore oil field in Thailand.

Following the finalization of the proposed disposal of highway assets, Gamuda announced plans to distribute RM1bil or 39.16 sen per share as a special dividend while Litrak intends to distribute RM2.71bil from the sale of its assets, translating to RM5.08 per share. Litrak has informed the Exchange that it does not intend to maintain its listing status, post disposal of its highway assets.

EQUITY

Global markets were generally mixed over the past week as investors weigh on the latest economic data points, a spike in crude oil price, which surged passed the US\$120 per barrel mark, and rising treasury yield as the 10-year US treasuries breached the 3.00% mark. Markets that rose gained between 0.3% to as much as 3.7% on the Hang Seng Index, while markets that fell witnessed losses of between 0.3% and 2.6%. Over on Bursa Malaysia, the market closed broadly lower with KLCI losing 40.19 pts or 2.6% to 1,509.71 pts – its lowest close since January 25, 2022, on the back of sustained selling pressure among key index stocks.

For the holiday-shortened week ended June 8, local institutions and retail market participants turned net buyers with an inflow of RM94.2mil and RM47.1mil, while foreigners were net sellers with an outflow of RM141.3mil.

EYE ON WEEK AHEAD

Later today, the Department of Statistics will be releasing the Industrial Production Index (IPI) as well as the Monthly Manufacturing statistics for April 2022. China will be releasing the key CPI and Producer Price Index (PPI) data for May, while the US will be issuing the May headline and

core inflation prints, which are expected to come in at 8.3% and 5.9% respectively. The June preliminary University of Michigan Consumer Sentiment Index is also due today, with the market looking at a reading of 58 from 58.4 in May.

On Tuesday, June 14, the US will be releasing the May PPI, which consensus expects a 10.7% y-o-y increase from the 11% recorded in April. On Wednesday, June 15, attention will shift to China as the world's second-largest economy will be releasing the May data for Retail Sales, which is expected to show a drop of 6.1% y-o-y, Industrial Production, which is estimated to improve by 0.4% y-o-y and the cumulative Fixed Asset Investments, which is expected to increase by 7%. Out of the US, the May Retail Sales will be out with the market looking at a modest 0.2% m-o-m increase,

On the same day, the Federal Open Market Committee (FOMC) is expected to announce a 50bps hike in the US Fed Fund Rate. The FOMC will also be releasing fresh economic projections for the US, while its press conference and monetary policy statement will be greatly scrutinized by the market. Another key economic data point is Malaysia's May External Trade Statistics, which is due on Thursday, June 17.

Pankaj is a former CIO and Head of Research, presently focused on economic, market and corporate analyses. The views expressed here are entirely the writer's own.



**CHECK OUT
SHAREINVESTOR
BROKERS' CALL**

Weekly Buy/Sell/Hold calls from leading Malaysian Brokerages.

[Go To Brokers' Call](#)

WHY THE DELAY OF 11 DAYS IN ANNOUNCING A LEGAL SUIT?



Devanesan
Evanson

**Chief Executive
Officer, Minority
Shareholders Watch
Group**

Technical rubber compound specialist GIB Holdings Berhad (formerly Goodway Integrated Industries Berhad) owes an explanation to its minority shareholders as to why it took the company “a good 11 days” to make public that it has been served with an originating summons (OS) by its former executive director Wong Weng Yew. While Wong, who is also a shareholder of GIB with a 6% stake, had filed his OS with the Shah Alam High Court on 19 May via his solicitors, Messrs Chong + Kheng Hoe, GIB has only made known of the legal suit via a Bursa Malaysia filing on 30 May under the subject “Material Litigation”.

Doubtlessly, the long delay in disclosing the legal suit filed by Wong – who coincidentally had his services terminated on the same day – is a sure breach of the core corporate governance principle

of transparency and the need for timely information to enable minority shareholders to make informed investment decisions. The common practice would have been for GIB to immediately make a Bursa Malaysia announcement that a legal action has been initiated against the company or at the very least the next day if the OS was received after office hours. Besides, this brought to question of whether GIB had breached the Main Market Listing Requirements (MMLR) which require a listed issuer to make immediate public disclosure of any material information including “the commencement of or the involvement in litigation and any material development arising from such litigation” (Paragraph 9.04 (f) of MMLR).

To recap, Wong who was suspended on grounds of misconduct as per the charges made against him in a show cause letter dated 28 March this year, has had his services terminated after the company’s external independent auditor claimed to have found sufficient basis to hold him accountable for misconduct. He was then re-designated as GIB’s non-independent non-executive director on 27 May upon termination of his employment.

According to GIB’s Annual Report 2020, Wong was appointed as an executive director of GIB on 23 February last year when he was made responsible for managing the group’s finance and accounting operations. Prior to joining GIB, he was attached to PricewaterhouseCoopers LLP in Singapore where he managed and provided advisory for business processes, IT auditing and security review. Overall, he has more than 10 years’ experience in business advisory and auditing. Recall that Wong had on 25 April lodged a police report in respect of the contentious matters involving GIB. He claimed he had yet to receive update on the matter of the investigative committee set up by GIB. Furthermore, he voiced his concern on poor governance as a member of the investigative committee is a family member of GIB’s executive chairman, Tai Boon Wee.

WHAT DOES THE OS SEEK?

In a nutshell, the OS has named as defendants the company, its executive chairman Tai Boon Wee, executive/alternate director Tai Qiyao (who has ceased to be the alternate director to Tai Boon Wee with effect from 1 June), fellow executive director Tai Qisheng and non-independent non-executive director Madam Wong Ping Kiong.

As per GIB's Bursa Malaysia filing dated 30 May, the following were sought from the directors named as defendants in Wong's OS:

- A declaration of a breach of Main Market Listing Requirements (MMLR)
- Indemnity against the plaintiff (Wong) on any and/or liabilities, costs and damages arising from the breach of MMLR
- An injunction as director and/or officer of GIB and its subsidiaries for a period of five years
- A restraint from managing GIB and its subsidiaries for a period of five years
- A restriction from buying GIB shares for a period of five years
- A restriction from on voting or any other rights in relation to GIB's shares
- A restriction on collecting and issuance of new GIB shares through a private placement exercise

From GIB and the directors named in person as defendants, the following were sought by the OS:

- Any other relief under Section 360 of the Capital Markets and Services Act 2007;
- General damages determined by the court
- Exemplary damages
- Aggravated damages
- A declaration that the plaintiff's (Wong) suspension as an executive director is considered null and void

- A restraint from imposing a restriction on the plaintiff (Wong) to the access of information, documents, records and premise of GIB
- Any other ruling deemed fit by the court under Section 346(2) of the Companies Act 2016
- Costs of application and other costs
- Interests
- Any other relief deemed fit by the court

While the announcement on the OS offered little details to public, a news report by online media Focus Malaysia on 27 May probably helped to shed some light on the events which led to this corporate saga. It was reported that Wong has in his OS disputed the reasons given by GIB to change its financial year end to 30 June 2022 from 31 December 2021 (which was announced on 27 April 2022). GIB said the change of financial year was supposed to facilitate the investigation into its management, the handling of the glove business as well as the accounts of the company and its subsidiaries (which is linked to Wong's suspension and ultimately termination). Claiming this reasoning as falsehood, Wong alleged that GIB's auditor Grant Thornton Malaysia PLT had in fact issued a disclaimer of opinion in its draft audited accounts of the company that it has not been able to obtain sufficient appropriate audit evidence to provide a basis for an audit opinion on these financial statements. Based on the previous financial year end of 31 December 2021, GIB would have required to file its Annual Report 2021 and audited financial statements for its financial on or before 30 April 2022. If the disclaimer by the auditor is made public, GIB would have triggered a Practice Note 17 (PN17) situation. However, with the change of its financial year-end from 31 December 2021 to 30 June 2022, GIB only must announce the audited financial statements on or before 31 October 2022.

All in all, it seems that the storms in GIB is far from over.

DEFINITION: Insider Activity shows the trades made by substantial shareholders or directors of the company. Purchases by the directors and company share buyback may indicate the share price is undervalued and brings confidence to the price trend of the share price.



ShareInvestor WebPro > Fundamental > Insider Trades > click Search tab > Select Bursa > click Stock name > scroll up and leave at <Select Counter> Type Date Range for Announcement Date > click Search

Notice Period is 29 May 2022 – 04 June 2022

Effective Change Date	Stock Name	Buyer/ Seller Name [Classification]	Bought / (Sold) ['000]		No. of Shares After Trade ['000]	
			Total	Total	% Held	% Held
30 May 2022 - 31 May 2022	3A	MR TEO KWEE HOCK [SSH]	780	49,486	10.094	
03 Jun 2022 - 03 Jun 2022	ABLEGLOB	MR NG KENG HOE (HUANG QINGHE) [SSH]	184	36,948	12.014	
01 Jun 2022 - 01 Jun 2022	ABLEGLOB	MR NG KENG HOE (HUANG QINGHE) [DIR/CEO]	184	36,948	12.014	
31 May 2022 - 31 May 2022	ABMB	EMPLOYEES PROVIDENT FUND BOARD [SSH]	-734	174,799	11.291	
30 May 2022 - 30 May 2022	ABMB	EMPLOYEES PROVIDENT FUND BOARD [SSH]	-84	175,534	11.339	
27 May 2022 - 27 May 2022	ABMB	EMPLOYEES PROVIDENT FUND BOARD [SSH]	-366	175,618	11.344	
26 May 2022 - 26 May 2022	ABMB	EMPLOYEES PROVIDENT FUND BOARD [SSH]	-334	175,984	11.368	
25 May 2022 - 25 May 2022	ABMB	EMPLOYEES PROVIDENT FUND BOARD [SSH]	-60	176,318	11.389	
30 May 2022 - 30 May 2022	AEON	EMPLOYEES PROVIDENT FUND BOARD [SSH]	286	143,676	10.233	
27 May 2022 - 27 May 2022	AEON	EMPLOYEES PROVIDENT FUND BOARD [SSH]	51	143,390	10.213	
26 May 2022 - 26 May 2022	AEON	EMPLOYEES PROVIDENT FUND BOARD [SSH]	1,116	143,340	10.209	
25 May 2022 - 25 May 2022	AEON	EMPLOYEES PROVIDENT FUND BOARD [SSH]	109	142,992	10.185	
01 Jun 2022 - 01 Jun 2022	AIMFLEX	MR CHUAH CHONG EWE [DIR/CEO]	81,577	81,577	5.55	
01 Jun 2022 - 01 Jun 2022	AIMFLEX	MR CHUAH CHONG EWE [SSH]	81,577	81,577	5.55	
01 Jun 2022 - 01 Jun 2022	AIMFLEX	LUSTER INDUSTRIES BHD [SSH]	81,577	181,577	12.361	
02 Jun 2022 - 02 Jun 2022	AIRPORT	KUMPULAN WANG PERSARAAN (DIPERBADANKAN) [SSH]	-88	93,136	5.613	
31 May 2022 - 31 May 2022	AIRPORT	EMPLOYEES PROVIDENT FUND BOARD [SSH]	231	251,023	15.129	
01 Jun 2022 - 01 Jun 2022	AIRPORT	KUMPULAN WANG PERSARAAN (DIPERBADANKAN) [SSH]	-206	93,224	5.619	
31 May 2022 - 31 May 2022	AIRPORT	KUMPULAN WANG PERSARAAN (DIPERBADANKAN) [SSH]	48	93,430	5.631	
30 May 2022 - 30 May 2022	AIRPORT	KUMPULAN WANG PERSARAAN (DIPERBADANKAN) [SSH]	-14	93,382	5.628	
25 May 2022 - 25 May 2022	ALLIANZ	EMPLOYEES PROVIDENT FUND BOARD [SSH]	0.4	11,972	6.728	
31 May 2022 - 01 Jun 2022	ANCOMNY	DATO' SIEW KA WEI [DIR/CEO]	3	14,105	26.636	
30 May 2022 - 01 Jun 2022	ANCOMNY	DATO' SIEW KA WEI [DIR/CEO]	70	60,860	21.251	
30 May 2022 - 01 Jun 2022	ANCOMNY	DATO' SIEW KA WEI [SSH]	70	60,860	21.251	
25 May 2022 - 27 May 2022	ANCOMNY	DATO' SIEW KA WEI [DIR/CEO]	70	60,790	21.205	
25 May 2022 - 27 May 2022	ANCOMNY	DATO' SIEW KA WEI [SSH]	70	60,790	21.205	
25 May 2022 - 27 May 2022	ANCOMNY	DATO' SIEW KA WEI [DIR/CEO]	5	14,102	26.617	
01 Jun 2022 - 01 Jun 2022	ARTRONIQ	MR LIAN WAY GIAN [DIR/CEO]	200	1,391	0.438	
31 May 2022 - 31 May 2022	ARTRONIQ	MR CHIN YEW THONG [DIR/CEO]	200	200	0.063	
31 May 2022 - 31 May 2022	ASIAPAC	MR MAH SAU CHEONG [SSH]	294,002	476,071	32.33	
31 May 2022 - 31 May 2022	ASIAPAC	DATO' MUSTAPHA BIN BUANG [DIR/CEO]	1,568	35,224	2.366	
31 May 2022 - 31 May 2022	ASIAPAC	DATUK MOHAMED SALLEH BIN BAJURI [DIR/CEO]	250	750	0.05	
31 May 2022 - 31 May 2022	ASIAPAC	TAN SRI DATO' SERI HJ MEGAT NAJMUDDIN BIN DATUK SERI DR HJ MEGAT KHAS [DIR/CEO]	100	295	0.02	
31 May 2022 - 31 May 2022	AXIATA	EMPLOYEES PROVIDENT FUND BOARD [SSH]	-430	1,552,587	16.919	
30 May 2022 - 30 May 2022	AXIATA	EMPLOYEES PROVIDENT FUND BOARD [SSH]	-263	1,553,017	16.923	
27 May 2022 - 27 May 2022	AXIATA	EMPLOYEES PROVIDENT FUND BOARD [SSH]	-1,131	1,553,280	16.926	
25 May 2022 - 25 May 2022	AXIATA	EMPLOYEES PROVIDENT FUND BOARD [SSH]	-434	1,554,411	16.938	
31 May 2022 - 31 May 2022	AXREIT	EMPLOYEES PROVIDENT FUND BOARD [SSH]	-100	261,568	16.003	
30 May 2022 - 30 May 2022	AXREIT	EMPLOYEES PROVIDENT FUND BOARD [SSH]	-38	261,668	16.009	
27 May 2022 - 27 May 2022	AXREIT	EMPLOYEES PROVIDENT FUND BOARD [SSH]	-382	261,706	16.011	
26 May 2022 - 26 May 2022	AXREIT	EMPLOYEES PROVIDENT FUND BOARD [SSH]	-3,604	262,088	16.035	
25 May 2022 - 25 May 2022	AXREIT	EMPLOYEES PROVIDENT FUND BOARD [SSH]	-4	265,692	16.255	
01 Jun 2022 - 01 Jun 2022	BAUTO	KUMPULAN WANG PERSARAAN (DIPERBADANKAN) [SSH]	-483	62,971	5.418	
31 May 2022 - 31 May 2022	BIMB	EMPLOYEES PROVIDENT FUND BOARD [SSH]	402	283,566	13.157	
26 May 2022 - 26 May 2022	BIMB	EMPLOYEES PROVIDENT FUND BOARD [SSH]	-2	283,164	13.138	
27 May 2022 - 27 May 2022	BIOHLDG	JOE HOLDING (M) INVESTMENT LIMITED [SSH]	150,000	150,000	12.4	
27 May 2022 - 27 May 2022	BIOHLDG	JOE HOLDING BERHAD [SSH]	150,000	150,000	12.4	
30 May 2022 - 31 May 2022	BJFOOD	TAN SRI DATO' SERI VINCENT TAN CHEE YIUON [SSH]	130	212,329	58.892	
25 May 2022 - 25 May 2022	BJFOOD	TAN SRI DATO' SERI VINCENT TAN CHEE YIUON [SSH]	-2,300	212,199	58.856	
25 May 2022 - 25 May 2022	BJFOOD	BERJAYA CORPORATION BERHAD [SSH]	-2,500	184,791	51.254	
25 May 2022 - 25 May 2022	BJFOOD	BERJAYA GROUP BERHAD [SSH]	-2,500	184,791	51.254	
30 May 2022 - 31 May 2022	BOILERM	DR CHIA SONG KUN [DIR/CEO]	240	269,936	52.32	
30 May 2022 - 31 May 2022	BOILERM	DR CHIA SONG KUN [SSH]	240	269,936	52.32	
30 May 2022 - 31 May 2022	BOILERM	QL RESOURCES BERHAD [SSH]	240	269,536	52.24	
30 May 2022 - 31 May 2022	BOILERM	CBG (L) PTE LTD [SSH]	240	269,536	52.24	
30 May 2022 - 31 May 2022	BOILERM	QL GREEN RESOURCES SDN. BHD. [SSH]	240	269,536	52.24	
30 May 2022 - 31 May 2022	BOILERM	CBG (L) FOUNDATION [SSH]	240	269,536	52.24	
02 Jun 2022 - 02 Jun 2022	CAELY	DATO' SRI TEE YAM [SSH]	4,704	19,254	7.456	
30 May 2022 - 02 Jun 2022	CAELY	MISS KOO CHEN YENG [DIR/CEO]	13,254	19,254	7.456	
30 May 2022 - 30 May 2022	CAELY	MISS KOO CHEN YENG [SSH]	8,550	19,254	7.456	
05 May 2022 - 02 Jun 2022	CAELY	MADAM WONG SIAW PUIE [DIR/CEO]	4,871	4,871	1.886	
30 May 2022 - 30 May 2022	CAELY	DATO' WIRA NG CHUN HAU [SSH]	-8,550	53,527	20.727	
05 May 2022 - 05 May 2022	CAELY	DATO' WIRA NG CHUN HAU [SSH]	-5,000	62,077	24.038	
30 May 2022 - 30 May 2022	CAELY	DATO' WIRA NG CHUN HAU [SSH]	-8,550	53,527	20.727	
30 May 2022 - 30 May 2022	CAELY	DATO' SRI TEE YAM [SSH]	8,550	14,550	5.634	
27 May 2022 - 27 May 2022	CAELY	DATO' SRI GOH CHOON KIM [SSH]	-54,352	55,852	21.628	
31 May 2022 - 01 Jun 2022	CHGP	CHIN HIN GROUP BERHAD [SSH]	6,576	279,337	63.112	
31 May 2022 - 01 Jun 2022	CHGP	MR CHIAU HAW CHOON [SSH]	6,576	279,337	63.112	
31 May 2022 - 01 Jun 2022	CHGP	PP CHIN HIN REALTY SDN BHD [SSH]	6,576	279,337	63.112	
31 May 2022 - 01 Jun 2022	CHGP	DATUK SERI CHIAU BENG TEIK [DIR/CEO]	6,576	279,337	63.112	

Notice Period is 29 May 2022 – 04 June 2022

Effective Change Date	Stock Name	Buyer/ Seller Name [Classification]	Bought / (Sold) ['000]		No. of Shares After Trade ['000]	
			Total	Total	% Held	% Held
31 May 2022 - 01 Jun 2022	CHGP	DATUK SERI CHIAU BENG TEIK [SSH]	6,576	279,337	63.112	
31 May 2022 - 01 Jun 2022	CHGP	MR CHIAU HAW CHOON [DIR/CEO]	6,576	279,337	63.112	
31 May 2022 - 01 Jun 2022	CHGP	DIVINE INVENTIONS SDN BHD [SSH]	6,576	279,337	63.112	
31 May 2022 - 01 Jun 2022	CHGP	DATIN SERI WONG MEE LENG [SSH]	6,576	279,337	63.112	
27 May 2022 - 30 May 2022	CHGP	DATUK SERI CHIAU BENG TEIK [SSH]	8,087	272,761	61.626	
27 May 2022 - 30 May 2022	CHGP	MR CHIAU HAW CHOON [SSH]	8,087	272,761	61.626	
27 May 2022 - 30 May 2022	CHGP	DATUK SERI CHIAU BENG TEIK [DIR/CEO]	8,087	272,761	61.626	
27 May 2022 - 30 May 2022	CHGP	CHIN HIN GROUP BERHAD [SSH]	8,087	272,761	61.626	
27 May 2022 - 30 May 2022	CHGP	DATIN SERI WONG MEE LENG [SSH]	8,087	272,761	61.626	
27 May 2022 - 30 May 2022	CHGP	PP CHIN HIN REALTY SDN BHD [SSH]	8,087	272,761	61.626	
27 May 2022 - 30 May 2022	CHGP	DIVINE INVENTIONS SDN BHD [SSH]	8,087	272,761	61.626	
27 May 2022 - 30 May 2022	CHGP	MR CHIAU HAW CHOON [DIR/CEO]	8,087	272,761	61.626	
26 May 2022 - 26 May 2022	CHGP	DATIN SERI WONG MEE LENG [SSH]	2,058	264,674	59.799	
26 May 2022 - 26 May 2022	CHGP	DATUK SERI CHIAU BENG TEIK [DIR/CEO]	2,058	264,674	59.799	
26 May 2022 - 26 May 2022	CHGP	MR CHIAU HAW CHOON [SSH]	2,058	264,674	59.799	
26 May 2022 - 26 May 2022	CHGP	DATUK SERI CHIAU BENG TEIK [SSH]	2,058	264,674	59.799	
26 May 2022 - 26 May 2022	CHGP	CHIN HIN GROUP BERHAD [SSH]	2,058	264,674	59.799	
26 May 2022 - 26 May 2022	CHGP	PP CHIN HIN REALTY SDN BHD [SSH]	2,058	264,674	59.799	
26 May 2022 - 26 May 2022	CHGP	MR CHIAU HAW CHOON [DIR/CEO]	2,058	264,674	59.799	
26 May 2022 - 26 May 2022	CHGP	DIVINE INVENTIONS SDN BHD [SSH]	2,058	264,674	59.799	
30 May 2022 - 30 May 2022	CHHB	TAN SRI LEE KIM TIONG @ LEE KIM YEW [SSH]	360	184,775	62.679	
30 May 2022 - 30 May 2022	CHHB	TAN SRI LEE KIM TIONG @ LEE KIM YEW [DIR/CEO]	360	184,775	62.679	
02 Jun 2022 - 02 Jun 2022	CHINHIN	MR CHIAU HAW CHOON [DIR/CEO]	171	375,342	42.426	
02 Jun 2022 - 02 Jun 2022	CHINHIN	MR CHIAU HAW CHOON [SSH]	171	51,525	42.426	
30 May 2022 - 01 Jun 2022	CHINHIN	DATUK SERI CHIAU BENG TEIK JP [DIR/CEO]	2,214	456,359	51.583	
30 May 2022 - 01 Jun 2022	CHINHIN	DATUK SERI CHIAU BENG TEIK JP [SSH]	2,214	132,542	51.583	
01 Jun 2022 - 01 Jun 2022	CIMB	KUMPULAN WANG PERSARAAN (DIPERBADANKAN) [SSH]	-725	699,568	6.68	
31 May 2022 - 31 May 2022	CIMB	KUMPULAN WANG PERSARAAN (DIPERBADANKAN) [SSH]	-258	700,293	6.69	
30 May 2022 - 30 May 2022	CIMB	EMPLOYEES PROVIDENT FUND BOARD [SSH]	2,651	1,718,263	16.4	
27 May 2022 - 27 May 2022	CIMB	EMPLOYEES PROVIDENT FUND BOARD [SSH]	280	1,715,612	16.38	
30 May 2022 - 30 May 2022	CIMB	KUMPULAN WANG PERSARAAN (DIPERBADANKAN) [SSH]	-1,000	700,551	6.69	
30 May 2022 - 30 May 2022	CIMB	KUMPULAN WANG PERSARAAN (DIPERBADANKAN) [SSH]	-1,000	700,551	6.7	
25 May 2022 - 25 May 2022	CIMB	EMPLOYEES PROVIDENT FUND BOARD [SSH]	3,000	1,715,332	16.38	
31 May 2022 - 31 May 2022	COMPUGT	MADAM SEE THOO CHAN [DIR/CEO]	78,000	909,620	19.845	
31 May 2022 - 31 May 2022	COMPUGT	MR GOH KHENG PEOW [SSH]	78,000	909,620	19.845	
31 May 2022 - 31 May 2022	COMPUGT	MADAM SEE THOO CHAN [SSH]	78,000	909,620	19.845	
02 Jun 2022 - 02 Jun 2022	CRG	DATO' SRI CHIANG FONG YEE [DIR/CEO]	11	269,201	33.414	
02 Jun 2022 - 02 Jun 2022	CRG	DATO' SRI CHIANG FONG YEE [SSH]	11	195,561	24.274	
30 May 2022 - 01 Jun 2022	CRG	DATO' SRI CHIANG FONG YEE [DIR/CEO]	316	269,189	33.412	
30 May 2022 - 01 Jun 2022	CRG	DATO' SRI CHIANG FONG YEE [SSH]	316	195,550	24.272	
27 May 2022 - 27 May 2022	CRG	DATO' SRI CHIANG FONG YEE [DIR/CEO]	640	268,873	33.373	
27 May 2022 - 27 May 2022	CRG	DATO' SRI CHIANG FONG YEE [SSH]	640	195,234	24.233	
31 May 2022 - 31 May 2022	CTOS	EMPLOYEES PROVIDENT FUND BOARD [SSH]	-347	140,611	6.087	
30 May 2022 - 30 May 2022	CTOS	EMPLOYEES PROVIDENT FUND BOARD [SSH]	-66	140,958	6.102	
27 May 2022 - 27 May 2022	CTOS	EMPLOYEES PROVIDENT FUND BOARD [SSH]	-20	141,024	6.105	
25 May 2022 - 25 May 2022	CTOS	EMPLOYEES PROVIDENT FUND BOARD [SSH]	-434	141,044	6.106	
02 Jun 2022 - 02 Jun 2022	CWG	MR LOH SEONG YEW [DIR/CEO]	100	250	0.153	
27 May 2022 - 27 May 2022	CYPARK	DATO' DAUD BIN AHMAD [SSH]	585	39,839	6.766	
27 May 2022 - 27 May 2022	CYPARK	DATO' DAUD BIN AHMAD [DIR/CEO]	585	39,839	6.766	
27 May 2022 - 27 May 2022	CYPARK	TAN SRI RAZALI BIN ISMAIL [DIR/CEO]	-2,500	25,285	4.294	
26 May 2022 - 26 May 2022	CYPARK	DATO' DAUD BIN AHMAD [DIR/CEO]	-1,500	39,254	6.667	
26 May 2022 - 26 May 2022	CYPARK	DATO' DAUD BIN AHMAD [SSH]	-1,500	39,254	6.667	
26 May 2022 - 27 May 2022	CYPARK	ENCIK MEGAT ABDUL MUNIR BIN MEGAT ABDULLAH RAFAIE [DIR/CEO]	150	706	0.12	
30 May 2022 - 30 May 2022	DAYANG	URUSHARTA JAMAAH SDN. BHD. [SSH]	256	94,898	8.197	
27 May 2022 - 27 May 2022	DAYANG	URUSHARTA JAMAAH SDN. BHD. [SSH]	2,210	94,643	8.175	
26 May 2022 - 26 May 2022	DAYANG	URUSHARTA JAMAAH SDN. BHD. [SSH]	88	92,433	7.984	
25 May 2022 - 25 May 2022	DAYANG	URUSHARTA JAMAAH SDN. BHD. [SSH]	-420	92,344	7.976	
02 Jun 2022 - 02 Jun 2022	DBHD	JOHOR CORPORATION [SSH]	4	272,385	83.354	
02 Jun 2022 - 02 Jun 2022	DBHD	JLAND GROUP SDN. BHD (FORMERLY KNOWN AS ABSOLUTE AMBIENT SDN. BHD.) [SSH]	4	228,421	69.901	
31 May 2022 - 31 May 2022	DBHD	JOHOR CORPORATION [SSH]	0.6	272,381	83.353	
31 May 2022 - 31 May 2022	DBHD	JLAND GROUP SDN. BHD (FORMERLY KNOWN AS ABSOLUTE AMBIENT SDN. BHD.) [SSH]	0.6	228,416	69.899	
30 May 2022 - 30 May 2022	DBHD	JOHOR CORPORATION [SSH]	0.3	272,380		

Notice Period is 29 May 2022 – 04 June 2022

Effective Change Date	Stock Name	Buyer/ Seller Name [Classification]	Bought / (Sold) ['000]	No. of Shares After Trade ['000]	
			Total	Total	% Held
31 May 2022 - 31 May 2022	DIGI	EMPLOYEE PROVIDENT FUND BOARD [SSH]	-700	1,165,234	14.987
30 May 2022 - 30 May 2022	DIGI	EMPLOYEE PROVIDENT FUND BOARD [SSH]	-140	1,165,934	14.996
27 May 2022 - 27 May 2022	DIGI	EMPLOYEE PROVIDENT FUND BOARD [SSH]	-557	1,166,074	14.998
26 May 2022 - 26 May 2022	DIGI	EMPLOYEE PROVIDENT FUND BOARD [SSH]	-147	1,166,631	15.005
25 May 2022 - 25 May 2022	DIGI	EMPLOYEE PROVIDENT FUND BOARD [SSH]	-781	1,166,778	15.007
01 Jun 2022 - 01 Jun 2022	DPHARMA	PERMODALAN NASIONAL BERHAD [SSH]	-75	411,965	43.263
01 Jun 2022 - 01 Jun 2022	DPHARMA	YAYASAN PELABURAN BUMIPUTRA [SSH]	-75	411,965	43.263
31 May 2022 - 31 May 2022	DPHARMA	PERMODALAN NASIONAL BERHAD [SSH]	-461	412,040	43.271
31 May 2022 - 31 May 2022	DPHARMA	YAYASAN PELABURAN BUMIPUTRA [SSH]	-461	412,040	43.271
30 May 2022 - 30 May 2022	DPHARMA	PERMODALAN NASIONAL BERHAD [SSH]	-66	412,501	43.319
30 May 2022 - 30 May 2022	DPHARMA	YAYASAN PELABURAN BUMIPUTRA [SSH]	-66	412,501	43.319
31 May 2022 - 31 May 2022	DRBHCOC	EMPLOYEES PROVIDENT FUND BOARD [SSH]	373	208,246	10.772
25 May 2022 - 25 May 2022	DSOINIC	URUSHARTA JAMAAH SDN. BHD. [SSH]	1,997	267,313	9.332
01 Jun 2022 - 02 Jun 2022	ECM	DATO' LIM KIAN ONN [DIR/CEO]	4,456	190,881	39.773
01 Jun 2022 - 02 Jun 2022	ECM	DATO' LIM KIAN ONN [SSH]	4,456	190,881	39.773
31 May 2022 - 31 May 2022	ECM	DATO' LIM KIAN ONN [SSH]	19,200	186,425	38.844
31 May 2022 - 31 May 2022	ECM	DATO' LIM KIAN ONN [DIR/CEO]	19,200	186,425	38.844
31 May 2022 - 31 May 2022	ECM	TUNE GROUP SDN BHD [SSH]	-19,200	99,767	20.788
31 May 2022 - 31 May 2022	ECM	TAN SRI ANTHONY FRANCIS FERNANDES [SSH]	-19,200	99,767	20.788
31 May 2022 - 31 May 2022	ECM	DATUK KAMARUDIN BIN MERANUN [SSH]	-19,200	99,767	20.788
31 May 2022 - 31 May 2022	ECONBHD	EMPLOYEES PROVIDENT FUND BOARD [SSH]	-2,324	124,634	8.793
30 May 2022 - 30 May 2022	ECONBHD	EMPLOYEES PROVIDENT FUND BOARD [SSH]	-407	126,958	8.956
27 May 2022 - 27 May 2022	ECONBHD	EMPLOYEES PROVIDENT FUND BOARD [SSH]	-3,247	127,366	8.985
26 May 2022 - 26 May 2022	ECONBHD	EMPLOYEES PROVIDENT FUND BOARD [SSH]	-2,960	130,613	9.214
25 May 2022 - 25 May 2022	ECONBHD	EMPLOYEES PROVIDENT FUND BOARD [SSH]	-432	133,573	9.423
30 May 2022 - 31 May 2022	ELKDESA	MR TEOH HOCK CHAI @ TEW HOCK CHAI [SSH]	172	123,500	40.731
30 May 2022 - 31 May 2022	ELKDESA	MR TEOH HOCK HOCK CHAI [DIR/CEO]	172	123,500	40.731
30 May 2022 - 01 Jun 2022	ENGTEX	DATIN YAP SENG KUAN [SSH]	545	122,338	28.109
30 May 2022 - 01 Jun 2022	ENGTEX	DATO' NG HOOK [DIR/CEO]	545	122,338	28.109
30 May 2022 - 01 Jun 2022	ENGTEX	DATO' NG HOOK [SSH]	545	122,338	28.109
30 May 2022 - 01 Jun 2022	ENGTEX	DATIN YAP SENG KUAN [DIR/CEO]	545	122,338	28.109
30 May 2022 - 30 May 2022	ENGTEX	NG YIK SOON [DIR/CEO]	30	8,970	2.061
31 May 2022 - 31 May 2022	F&N	EMPLOYEES PROVIDENT FUND BOARD [SSH]	138	46,580	12.7
30 May 2022 - 30 May 2022	F&N	EMPLOYEES PROVIDENT FUND BOARD [SSH]	60	46,261	12.613
27 May 2022 - 27 May 2022	F&N	EMPLOYEES PROVIDENT FUND BOARD [SSH]	22	46,093	12.567
26 May 2022 - 26 May 2022	FBBHD	MR NG KIAN BOON [DIR/CEO]	-1,084	189,131	87.56
26 May 2022 - 26 May 2022	FBBHD	MR NG KIAN BOON [SSH]	-1,084	189,131	87.56
27 May 2022 - 27 May 2022	FLBHD	MR LIN HAO WEN [SSH]	450	9,629	9.368
27 May 2022 - 27 May 2022	FLBHD	MR LIN HAO WEN [DIR/CEO]	450	9,629	9.368
27 May 2022 - 27 May 2022	FLBHD	MR LIN FONG MING [DIR/CEO]	420	9,589	9.33
27 May 2022 - 27 May 2022	FLBHD	MR LIN FONG MING [SSH]	420	9,589	9.33
27 May 2022 - 27 May 2022	FLBHD	MR LIN HAO YU [SSH]	420	9,003	8.759
27 May 2022 - 27 May 2022	FLBHD	MR LIN HAO YU [DIR/CEO]	420	9,003	8.759
27 May 2022 - 27 May 2022	FLBHD	MR NG TIAN MENG [DIR/CEO]	300	900	0.876
27 May 2022 - 27 May 2022	FLBHD	MR WONG YOKE NYEN [DIR/CEO]	300	520	0.506
25 May 2022 - 25 May 2022	FLBHD	MR WONG YOKE NYEN [DIR/CEO]	300	900	13.66
25 May 2022 - 25 May 2022	FLBHD	MR NG TIAN MENG [DIR/CEO]	300	600	9.11
25 May 2022 - 25 May 2022	FLBHD	MR LIN HAO WEN [DIR/CEO]	450	150	2.28
25 May 2022 - 25 May 2022	FLBHD	MR LIN HAO YU [DIR/CEO]	420	140	2.13
25 May 2022 - 25 May 2022	FLBHD	MR LIN FONG MING [DIR/CEO]	420	140	2.13
30 May 2022 - 01 Jun 2022	FLEXI	TAN KONG LEONG [SSH]	300	124,453	43.76
30 May 2022 - 01 Jun 2022	FLEXI	TAN KONG LEONG [DIR/CEO]	300	124,453	43.76
30 May 2022 - 01 Jun 2022	FLEXI	PHITCHAYA ARSANGKU [SSH]	300	124,453	43.759
01 Jun 2022 - 01 Jun 2022	FM	MR ONG LOOI CHAI [DIR/CEO]	40	10,518	1.883
31 May 2022 - 31 May 2022	FM	MR ONG LOOI CHAI [DIR/CEO]	50	10,478	1.876
30 May 2022 - 30 May 2022	FM	MR ONG LOOI CHAI [DIR/CEO]	100	10,428	1.867
27 May 2022 - 27 May 2022	FPGROUP	DATO' ONG CHOON HENG [DIR/CEO]	156	186,775	34.568
27 May 2022 - 27 May 2022	FPGROUP	DATO' ONG CHOON HENG [SSH]	156	186,775	34.568
26 May 2022 - 26 May 2022	GAMUDA	EMPLOYEES PROVIDENT FUND BOARD (EPF BOARD) [SSH]	-182	371,880	14.56
25 May 2022 - 25 May 2022	GAMUDA	EMPLOYEES PROVIDENT FUND BOARD (EPF BOARD) [SSH]	-581	372,063	14.57
31 May 2022 - 31 May 2022	GASMSIA	EMPLOYEES PROVIDENT FUND BOARD [SSH]	150	64,339	5.011
27 May 2022 - 27 May 2022	GBGAQRS	EMPLOYEES PROVIDENT FUND BOARD [SSH]	-2,983	27,172	5.006
27 May 2022 - 27 May 2022	GBGAQRS	DATO' KAMISAH BINTI JOHAN [DIR/CEO]	100	51,831	9.549
27 May 2022 - 27 May 2022	GBGAQRS	DATO' KAMISAH BINTI JOHAN [SSH]	100	51,831	9.549
26 May 2022 - 26 May 2022	GBGAQRS	EMPLOYEES PROVIDENT FUND BOARD [SSH]	-2,649	30,155	5.556
25 May 2022 - 25 May 2022	GBGAQRS	EMPLOYEES PROVIDENT FUND BOARD [SSH]	-798	32,804	6.044
30 May 2022 - 31 May 2022	GCAP	MR LEE POH HIN [SSH]	314	31,245	9.742
30 May 2022 - 30 May 2022	GCAP	MR LEE YEE LONG [SSH]	200	30,243	9.43
02 Jun 2022 - 03 Jun 2022	GTRONIC	MR NG KWENG CHONG [DIR/CEO]	8	39,466	5.89
30 May 2022 - 01 Jun 2022	GTRONIC	MR NG KWENG CHONG [DIR/CEO]	12	39,458	5.89
31 May 2022 - 31 May 2022	HARTA	EMPLOYEES PROVIDENT FUND BOARD [SSH]	-2,950	267,071	7.792
30 May 2022 - 30 May 2022	HARTA	EMPLOYEES PROVIDENT FUND BOARD [SSH]	-878	270,221	7.878
27 May 2022 - 27 May 2022	HARTA	EMPLOYEES PROVIDENT FUND BOARD [SSH]	-407	270,899	7.903
30 May 2022 - 30 May 2022	HEIM	KAYNE ANDERSON RUDNICK INVESTMENT MANAGEMENT LLC. [SSH]	-48	15,636	5.176
27 May 2022 - 27 May 2022	HEIM	KAYNE ANDERSON RUDNICK INVESTMENT MANAGEMENT LLC. [SSH]	-41	15,684	5.192
30 May 2022 - 30 May 2022	HHGROUP	MR KEE SWEE LAI [DIR/CEO]	8,000	32,269	4.433
30 May 2022 - 30 May 2022	HH-GROUP-WA	MR KEE SWEE LAI [DIR/CEO]	8,000	5,592	3.688
31 May 2022 - 31 May 2022	HLBANK	EMPLOYEES PROVIDENT FUND BOARD [SSH]	-302	205,113	9.83
30 May 2022 - 30 May 2022	HLBANK	EMPLOYEES PROVIDENT FUND BOARD [SSH]	-333	205,414	9.844
27 May 2022 - 27 May 2022	HLBANK	EMPLOYEES PROVIDENT FUND BOARD [SSH]	-142	205,747	9.86
26 May 2022 - 26 May 2022	HLBANK	EMPLOYEES PROVIDENT FUND BOARD [SSH]	182	205,889	9.867
25 May 2022 - 25 May 2022	HLBANK	EMPLOYEES PROVIDENT FUND BOARD [SSH]	170	205,707	9.858
01 Jun 2022 - 01 Jun 2022	HSPLANT	HEP SENG CONSOLIDATED BERHAD [SSH]	-106	556,008	69.528
30 May 2022 - 30 May 2022	HSPLANT	GEK POH (HOLDINGS) SDN BHD [SSH]	-2,634	556,114	69.542
30 May 2022 - 30 May 2022	HSPLANT	TAN SRI DATUK SERI PANGLIMA LAU CHO KUN @ LAU YU CHAK [SSH]	-2,634	556,114	69.542
30 May 2022 - 30 May 2022	HSPLANT	HAP SENG CONSOLIDATED BERHAD [SSH]	-2,634	556,114	69.542
30 May 2022 - 30 May 2022	ICON	DATO' SRI HADIAN BIN HASHIM [DIR/CEO]	1,000	83,266	3.078
25 May 2022 - 25 May 2022	IGBREIT	EMPLOYEES PROVIDENT FUND BOARD ("EPF BOARD") [SSH]	42	407,634	11.388
31 May 2022 - 31 May 2022	IHH	EMPLOYEES PROVIDENT FUND BOARD [SSH]	-1,912	851,065	9.668
30 May 2022 - 30 May 2022	IHH	EMPLOYEES PROVIDENT FUND BOARD [SSH]	148	852,977	9.69
27 May 2022 - 27 May 2022	IHH	EMPLOYEES PROVIDENT FUND BOARD [SSH]	745	852,829	9.688
26 May 2022 - 26 May 2022	IHH	EMPLOYEES PROVIDENT FUND BOARD [SSH]	378	852,084	9.68
25 May 2022 - 25 May 2022	IHH	EMPLOYEES PROVIDENT FUND BOARD [SSH]	433	851,706	9.675

Notice Period is 29 May 2022 – 04 June 2022

Effective Change Date	Stock Name	Buyer/ Seller Name [Classification]	Bought / (Sold) ['000]	No. of Shares After Trade ['000]	
			Total	Total	% Held
31 May 2022 - 31 May 2022	IJM	URUSHARTA JAMAAH SDN BHD [SSH]	2	213,735	6.054
26 May 2022 - 26 May 2022	IJM	AMANAHRAYA TRUSTEES BERHAD - AMANAH SAHAM BUMIPUTERA [SSH]	7,000	262,091	7.424
25 May 2022 - 25 May 2022	IJM	URUSHARTA JAMAAH SDN BHD [SSH]	2	213,733	6.054
31 May 2022 - 31 May 2022	ILB	MR TEE TUAN SEM [DIR/CEO]	3,044	33,021	17.481
31 May 2022 - 31 May 2022	ILB	MR TEE TUAN SEM [SSH]	3,044	29,978	17.481
01 Jun 2022 - 01 Jun 2022	IMPIANA	DATO' SERI ISMAIL @ FAROUK BIN ABDULLAH [DIR/CEO]	-200	644,771	44.642
01 Jun 2022 - 01 Jun 2022	IMPIANA	DATO' SERI ISMAIL @ FAROUK BIN ABDULLAH [SSH]	-200	644,771	44.642
01 Jun 2022 - 01 Jun 2022	IMPIANA	IMPIANA SDN BHD [SSH]	-200	351,027	24.304
02 Jun 2022 - 02 Jun 2022	INARI	KUMPULAN WANG PERSARAAN (DIPERBADANKAN) [SSH]	965	339,924	9.17
30 May 2022 - 30 May 2022	INARI	EMPLOYEES PROVIDENT FUND BOARD [SSH]	280	296,606	8.002
26 May 2022 - 26 May 2022	INARI	EMPLOYEES PROVIDENT FUND BOARD [SSH]	3,442	296,326	7.994
27 May 2022 - 27 May 2022	INARI	KUMPULAN WANG PERSARAAN (DIPERBADANKAN) [SSH]	-183	338,959	9.144
25 May 2022 - 25 May 2022	INARI	EMPLOYEES PROVIDENT FUND BOARD [SSH]	2,573	292,884	7.901
27 May 2022 - 27 May 2022	INNATURE	DATIN CHEAH KIM CHOO [DIR/CEO]	300	528,257	74.837
27 May 2022 - 27 May 2022	INNATURE	DATIN CHEAH KIM CHOO [SSH]	300	507,329	71.872
27 May 2022 - 27 May 2022	INNATURE	MR DARYL FOONG CHUEN HOE [DIR/CEO]	300	21,079	2.986
30 May 2022 - 30 May 2022	IOICORP	EMPLOYEES PROVIDENT FUND BOARD [SSH]	-11	676,027	10.881
26 May 2022 - 26 May 2022	IOICORP	EMPLOYEES PROVIDENT FUND BOARD [SSH]	-83	676,038	10.881
25 May 2022 - 25 May 2022	IOICORP	EMPLOYEES PROVIDENT FUND BOARD [SSH]	-1,600	676,121	10.882
25 May 2022 - 25 May 2022	IOIPG	EMPLOYEES PROVIDENT FUND BOARD [SSH]	-6	444,008	8.064
25 May 2022 - 25 May 2022	IREKA	EXEMPT AN FOR KENANGA INVESTORS BERHAD [SSH]	-10,000	55,930	24.55
31 May 2022 - 31 May 2022	JADEM	DATO SRI CHONG WEI CHUAN [SSH]	-450	23,570	7.319
31 May 2022 - 31 May 2022	JADEM	X INFINITY HOLDING SDN BHD [SSH]	-450	22,720	7.055
31 May 2022 - 31 May 2022	JADEM	X INFINITY GROUP BERHAD [SSH]	-450	22,720	7.055
27 May 2022 - 30 May 2022	JADEM	DATO SRI CHONG WEI CHUAN [SSH]	-950	24,020	7.459
27 May 2022 - 30 May 2022	JADEM	X INFINITY GROUP BERHAD [SSH]	-950	23,170	7.195
27 May 2022 - 30 May 2022	JADEM	X INFINITY HOLDING SDN BHD [SSH]	-950	23,170	7.195
31 May 2022 - 31 May 2022	JFTECH	DATO FOONG WEI KUONG [DIR/CEO]	-3,000	469,862	50.683
31 May 2022 - 31 May 2022	JFTECH	DATO FOONG WEI KUONG [SSH]	-3,000	219,862	50.683
27 May 2022 - 30 May 2022	JIANKUN	MR ANG KIAN YOU [SSH]	721	11,512	5.175
30 May 2022 - 01 Jun 2022	KAB	MR KINGTONG TONG KUM LOONG [SSH]	-7,000	234,599	13.05
26 May 2022 - 26 May 2022	KAWAN	MR GAN THIAM CHAI [DIR/CEO]	50	102,431	28.56
26 May 2022 - 26 May 2022	KAWAN	MR GAN THIAM CHAI [SSH]	50	102,431	28.56
31 May 2022 - 31 May 2022	KLK	EMPLOYEES PROVIDENT FUND BOARD [SSH]	-316	107,702	9.989
30 May 2022 - 30 May 2022	KLK	EMPLOYEES PROVIDENT FUND BOARD [SSH]	-119	108,018	10.019
27 May 2022 - 27 May 2022	KLK	EMPLOYEES PROVIDENT FUND BOARD [SSH]	111	108,137	10.03
26 May 2022 - 26 May 2022	KLK	EMPLOYEES PROVIDENT FUND BOARD [SSH]	78	108,026	10.02
25 May 2022 - 25 May 2022	KLK	EMPLOYEES PROVIDENT FUND BOARD [SSH]	-45	107,948	10.012
31 May 2022 - 31 May 2022	KOSSAN	EMPLOYEES PROVIDENT FUND BOARD [SSH]	-239	207,674	8.139
30 May 2022 - 30 May 2022	KOSSAN	EMPLOYEES PROVIDENT FUND BOARD [SSH]	-183	207,913	8.148
27 May 2022 - 27 May 2022	KOSSAN	EMPLOYEES PROVIDENT FUND BOARD [SSH]	-187	208,096	8.155
25 May 2022 - 25 May 2022	KOSSAN	EMPLOYEES PROVIDENT FUND BOARD [SSH]	-186	208,283	8.163
02 Jun 2022 - 02 Jun 2022	KSSC	DR LIM PANG KIAM [SSH]	82	8,909	7.733
30 May 2022 - 31 May 2022	KSSC	MR YAP CHEE KHENG [SSH]	191	9,296	8.07
30 May 2022 - 31 May 2022	KSSC	MR YAP CHEE KHENG [DIR/CEO]	191	9,296	8.07
27 May 2022 - 27 May 2022	KSSC	MR YAP CHEE KHENG [DIR/CEO]	26	9,106	7.904
27 May 2022 - 27 May 2022	KSSC	MR YAP CHEE KHENG [SSH]	26	9,106	7.904
01 Jun 2022 - 01 Jun 2022	LAMBO	UBS AG LONDON [SSH]	0.1	102,657	6.664
01 Jun 2022 - 01 Jun 2022	LAMBO	UBS AG [SSH]	0.1	102,657	6.664
01 Jun 2022 - 01 Jun 2022	LAMBO	UBS GROUP AG [SSH]	0.1	102,657	6.664
26 May 2022 - 26 May 2022	LAMBO	UBS AG LONDON [SSH]	0.5	102,657	6.664
26 May 2022 - 26 May 2022	LAMBO	UBS GROUP AG [SSH]	0.5	102,657	6.664
26 May 2022 - 26 May					

Notice Period is 29 May 2022 - 04 June 2022

Effective Change Date	Stock Name	Buyer/ Seller Name [Classification]	Bought / (Sold) ['000]	No. of Shares After Trade ['000]	
			Total	Total	% Held
30 May 2022 - 30 May 2022	MAYBANK	AMANAHRAYA TRUSTEES BERHAD - AMANAH SAHAM BUMIPUTERA [SSH]	-2,148	3,977,737	33.231
30 May 2022 - 30 May 2022	MAYBANK	PERMODALAN NASIONAL BERHAD [SSH]	-500	846,163	7.069
30 May 2022 - 30 May 2022	MAYBANK	YAYASAN PELABURAN BUMIPUTRA ("YPB") [SSH]	-500	846,163	7.069
27 May 2022 - 27 May 2022	MAYBANK	EMPLOYEES PROVIDENT FUND BOARD [SSH]	-1,000	1,646,924	13.759
27 May 2022 - 27 May 2022	MAYBANK	AMANAHRAYA TRUSTEES BERHAD - AMANAH SAHAM BUMIPUTERA [SSH]	-178	3,979,884	33.249
26 May 2022 - 26 May 2022	MAYBANK	EMPLOYEES PROVIDENT FUND BOARD [SSH]	-1,000	1,647,924	13.767
26 May 2022 - 26 May 2022	MAYBANK	AMANAHRAYA TRUSTEES BERHAD - AMANAH SAHAM BUMIPUTERA [SSH]	-2,522	3,980,062	33.25
26 May 2022 - 26 May 2022	MAYBANK	PERMODALAN NASIONAL BERHAD [SSH]	-1,000	846,663	7.073
26 May 2022 - 26 May 2022	MAYBANK	YAYASAN PELABURAN BUMIPUTRA ("YPB") [SSH]	-1,000	846,663	7.073
25 May 2022 - 25 May 2022	MAYBANK	EMPLOYEES PROVIDENT FUND BOARD [SSH]	500	1,648,924	13.775
01 Jun 2022 - 03 Jun 2022	MFCB	PROFESOR DATO' DR TAN HUI MENG [DIR/CEO]	129	3,301	0.349
26 May 2022 - 26 May 2022	MHB	CITIGROUP NOMINEES (TEMPATAN) SDN BHD URUSHARTA JAMAAH SDN BHD (1)-IC [SSH]	145	82,934	5.183
01 Jun 2022 - 02 Jun 2022	MHC	MR CHAN KAM LEONG [DIR/CEO]	-115	73	0.037
31 May 2022 - 31 May 2022	MI	EMPLOYEES PROVIDENT FUND BOARD [SSH]	61	45,161	5.04
30 May 2022 - 30 May 2022	MI	EMPLOYEES PROVIDENT FUND BOARD [SSH]	270	45,100	5.03
01 Jun 2022 - 01 Jun 2022	MICROLN	OMESTI BERHAD [SSH]	800	540,595	50.603
01 Jun 2022 - 01 Jun 2022	MICROLN	OMESTI HOLDINGS BERHAD [SSH]	800	540,595	50.603
27 May 2022 - 31 May 2022	MIECO	DATO' SRI NG AH CHAI [DIR/CEO]	20,181	564,253	56.425
27 May 2022 - 31 May 2022	MIECO	DATO' SRI NG AH CHAI [SSH]	20,181	564,253	56.425
31 May 2022 - 31 May 2022	MIKROMB	MR LOW KHEK HENG @ LOW CHOON HUAT [SSH]	471	104,121	17.671
02 Jun 2022 - 02 Jun 2022	MISC	KUMPULAN WANG PERSARAAN (DIPERBADANKAN) (KWAP) [SSH]	-29	233,200	5.22
31 May 2022 - 31 May 2022	MISC	EMPLOYEES PROVIDENT FUND BOARD [SSH]	132	556,939	12.48
01 Jun 2022 - 01 Jun 2022	MISC	KUMPULAN WANG PERSARAAN (DIPERBADANKAN) (KWAP) [SSH]	-232	233,229	5.22
30 May 2022 - 30 May 2022	MISC	EMPLOYEES PROVIDENT FUND BOARD [SSH]	-149	556,807	12.47
31 May 2022 - 31 May 2022	MISC	KUMPULAN WANG PERSARAAN (DIPERBADANKAN) (KWAP) [SSH]	-183	233,460	5.23
30 May 2022 - 30 May 2022	MISC	KUMPULAN WANG PERSARAAN (DIPERBADANKAN) (KWAP) [SSH]	-355	233,644	5.23
27 May 2022 - 27 May 2022	MISC	EMPLOYEES PROVIDENT FUND BOARD [SSH]	129	556,956	12.48
30 May 2022 - 30 May 2022	MISC	KUMPULAN WANG PERSARAAN (DIPERBADANKAN) (KWAP) [SSH]	-244	233,755	5.23
26 May 2022 - 26 May 2022	MISC	EMPLOYEES PROVIDENT FUND BOARD [SSH]	956	556,827	12.47
27 May 2022 - 27 May 2022	MISC	KUMPULAN WANG PERSARAAN (DIPERBADANKAN) (KWAP) [SSH]	-98	233,999	5.24
26 May 2022 - 26 May 2022	MISC	AMANAHRAYA TRUSTEES BERHAD - AMANAH SAHAM BUMIPUTERA [SSH]	-128	233,360	5.23
25 May 2022 - 25 May 2022	MISC	EMPLOYEES PROVIDENT FUND BOARD [SSH]	-647	555,872	12.45
03 Jun 2022 - 03 Jun 2022	MRDIY	HYPTIS LIMITED [SSH]	2,733	544,464	8.664
03 Jun 2022 - 03 Jun 2022	MRDIY	CREADOR III L.P. [SSH]	2,733	544,464	8.664
03 Jun 2022 - 03 Jun 2022	MRDIY	CREADOR II LLC [SSH]	2,733	544,464	8.664
03 Jun 2022 - 03 Jun 2022	MRDIY	HYPTIS LIMITED [SSH]	900	541,731	8.62
03 Jun 2022 - 03 Jun 2022	MRDIY	CREADOR III L.P. [SSH]	900	541,731	8.62
03 Jun 2022 - 03 Jun 2022	MRDIY	CREADOR II LLC [SSH]	900	541,731	8.62
03 Jun 2022 - 03 Jun 2022	MRDIY	MR BRAHMAL A/L VASUDEVAN [DIR/CEO]	500	3,500	0.056
02 Jun 2022 - 02 Jun 2022	MRDIY	MR BRAHMAL A/L VASUDEVAN [DIR/CEO]	500	3,000	0.048
31 May 2022 - 31 May 2022	MRDIY	HYPTIS LIMITED [SSH]	-86,650	540,831	8.606
31 May 2022 - 31 May 2022	MRDIY	CREADOR III L.P. [SSH]	-86,650	540,831	8.606
31 May 2022 - 31 May 2022	MRDIY	CREADOR II LLC [SSH]	-86,650	540,831	8.606
01 Jun 2022 - 01 Jun 2022	MRDIY	MR BRAHMAL A/L VASUDEVAN [DIR/CEO]	500	2,500	0.04
02 Jun 2022 - 02 Jun 2022	MYEG	MR WONG THEAN SOON [DIR/CEO]	-33,000	2,294,033	31.061
02 Jun 2022 - 02 Jun 2022	MYEG	MR WONG THEAN SOON [SSH]	-33,000	2,294,033	31.061
02 Jun 2022 - 02 Jun 2022	MYEG	ASIA INTERNET HOLDINGS SDN. BHD. [SSH]	-33,000	1,401,974	18.983
30 May 2022 - 30 May 2022	MYEG	EMPLOYEES PROVIDENT FUND BOARD [SSH]	1,686	405,407	5.489
27 May 2022 - 27 May 2022	MYEG	EMPLOYEES PROVIDENT FUND BOARD [SSH]	54	403,721	5.466
26 May 2022 - 26 May 2022	MYEG	EMPLOYEES PROVIDENT FUND BOARD [SSH]	994	403,667	5.466
25 May 2022 - 25 May 2022	MYEG	EMPLOYEES PROVIDENT FUND BOARD [SSH]	2,000	402,673	5.452
30 May 2022 - 30 May 2022	MYNEWS	EMPLOYEES PROVIDENT FUND BOARD [SSH]	-38	40,563	5.946
27 May 2022 - 27 May 2022	MYNEWS	EMPLOYEES PROVIDENT FUND BOARD [SSH]	-106	40,601	5.952
02 Jun 2022 - 02 Jun 2022	NCT	DATO' SRI YAP NGAN CHOY [SSH]	5,626	496,009	50.99
02 Jun 2022 - 02 Jun 2022	NCT	DATO' SRI YAP NGAN CHOY [DIR/CEO]	5,626	496,009	50.99
02 Jun 2022 - 02 Jun 2022	NESTCON	MR NOR AZZAM BIN ABDUL JALIL [DIR/CEO]	-50	200	0.031
31 May 2022 - 31 May 2022	NESTLE	EMPLOYEES PROVIDENT FUND BOARD [SSH]	-103	21,752	9.276
27 May 2022 - 27 May 2022	NESTLE	EMPLOYEES PROVIDENT FUND BOARD [SSH]	-9	21,945	9.358
26 May 2022 - 26 May 2022	NESTLE	EMPLOYEES PROVIDENT FUND BOARD [SSH]	-46	21,954	9.362
25 May 2022 - 25 May 2022	NESTLE	EMPLOYEES PROVIDENT FUND BOARD [SSH]	-8	21,999	9.381
02 Jun 2022 - 03 Jun 2022	NGGB	LING SIEW LUAN [SSH]	60	44,727	5.809
27 May 2022 - 30 May 2022	NGGB	LING SIEW LUAN [SSH]	191	44,667	5.801
02 Jun 2022 - 02 Jun 2022	NIHSIN	ENCIK SOFIYAN BIN YAHYA [DIR/CEO]	1,900	13,368	2.522
27 May 2022 - 27 May 2022	NIHSIN	ENCIK SOFIYAN BIN YAHYA [DIR/CEO]	101	11,468	2.161
27 May 2022 - 27 May 2022	NIHSIN	MISS NG SHWU CHING [DIR/CEO]	2,196	3,217	0.606
30 May 2022 - 01 Jun 2022	NOVAMSC	MR OOI KENG THYE [SSH]	4,860	114,876	9.824
31 May 2022 - 31 May 2022	OCB	MR CHOY CHENG CHOONG [SSH]	36	7,986	7.765
31 May 2022 - 31 May 2022	OCK	EMPLOYEES PROVIDENT FUND BOARD [SSH]	-200	78,727	7.466
30 May 2022 - 30 May 2022	OCK	EMPLOYEES PROVIDENT FUND BOARD [SSH]	-179	78,927	7.485
27 May 2022 - 27 May 2022	OCK	EMPLOYEES PROVIDENT FUND BOARD [SSH]	-106	79,106	7.502
30 May 2022 - 30 May 2022	OCNCASH	MR TAN SIEW CHIN [SSH]	15	137,997	52.913
30 May 2022 - 30 May 2022	OCNCASH	MR TAN SIEW CHIN [DIR/CEO]	15	137,997	52.913
30 May 2022 - 30 May 2022	OCNCASH	MISS CHEN LEE CHEW [SSH]	15	137,997	52.913
02 Jun 2022 - 02 Jun 2022	OKA	MR CHOK HOOA @ CHOK YIN FATT [DIR/CEO]	10	1,614	0.658
27 May 2022 - 27 May 2022	PADINI	YONG PANG CHAUN [SSH]	20	300,798	45.72
27 May 2022 - 27 May 2022	PADINI	YONG PANG CHAUN [DIR/CEO]	20	300,798	45.72
27 May 2022 - 27 May 2022	PADINI	CHONG CHIN LIN [DIR/CEO]	20	300,798	45.72
27 May 2022 - 27 May 2022	PADINI	CHONG CHIN LIN [SSH]	20	300,798	45.72
27 May 2022 - 27 May 2022	PADINI	KUMPULAN WANG PERSARAAN (DIPERBADANKAN) [SSH]	-117	47,412	7.206
27 May 2022 - 27 May 2022	PADINI	MR BENJAMIN YONG TZE JET [DIR/CEO]	10	113	0.017
27 May 2022 - 27 May 2022	PADINI	MISS SUNG FONG FUI [DIR/CEO]	25	35	0.005
30 May 2022 - 30 May 2022	PANAMY	EMPLOYEES PROVIDENT FUND BOARD [SSH]	-3	8,082	13.304
27 May 2022 - 27 May 2022	PANAMY	EMPLOYEES PROVIDENT FUND BOARD [SSH]	-7	8,085	13.31
01 Jun 2022 - 01 Jun 2022	PANTECH	MR TAN ANG ANG [DIR/CEO]	-75	15,765	1.918
30 May 2022 - 30 May 2022	PANTECH	MR TAN ANG ANG [DIR/CEO]	200	15,839	1.927
31 May 2022 - 31 May 2022	PBBANK	EMPLOYEES PROVIDENT FUND BOARD [SSH]	-5,083	2,939,491	15.14
30 May 2022 - 30 May 2022	PBBANK	EMPLOYEES PROVIDENT FUND BOARD [SSH]	-513	2,944,574	15.17
27 May 2022 - 27 May 2022	PBBANK	EMPLOYEES PROVIDENT FUND BOARD [SSH]	-3,000	2,945,087	15.17
26 May 2022 - 26 May 2022	PBBANK	EMPLOYEES PROVIDENT FUND BOARD [SSH]	-1,945	2,948,087	15.19

Notice Period is 29 May 2022 - 04 June 2022

Effective Change Date	Stock Name	Buyer/ Seller Name [Classification]	Bought / (Sold) ['000]	No. of Shares After Trade ['000]	
			Total	Total	% Held
25 May 2022 - 25 May 2022	PBBANK	EMPLOYEES PROVIDENT FUND BOARD [SSH]	913	2,950,032	15.2
31 May 2022 - 31 May 2022	PCHEM	EMPLOYEES PROVIDENT FUND BOARD ("EPF BOARD") [SSH]	-1,168	591,531	7.394
30 May 2022 - 30 May 2022	PCHEM	EMPLOYEES PROVIDENT FUND BOARD ("EPF BOARD") [SSH]	-3,825	592,699	7.409
27 May 2022 - 27 May 2022	PCHEM	EMPLOYEES PROVIDENT FUND BOARD ("EPF BOARD") [SSH]	941	596,524	7.457
26 May 2022 - 26 May 2022	PCHEM	EMPLOYEES PROVIDENT FUND BOARD ("EPF BOARD") [SSH]	1,862	595,583	7.445
25 May 2022 - 25 May 2022	PCHEM	EMPLOYEES PROVIDENT FUND BOARD ("EPF BOARD") [SSH]	-178	593,721	7.422
25 May 2022 - 25 May 2022	PENTA	EMPLOYEES PROVIDENT FUND BOARD [SSH]	122	53,110	7.466
02 Jun 2022 - 02 Jun 2022	PESTECH	MR LIM PAY CHUAN [SSH]	215	190,686	19.368
02 Jun 2022 - 02 Jun 2022	PESTECH	MR LIM PAY CHUAN [DIR/CEO]	215	190,686	19.368
01 Jun 2022 - 01 Jun 2022	PESTECH	MR LIM PAY CHUAN [SSH]	210	190,471	19.346
01 Jun 2022 - 01 Jun 2022	PESTECH	MR LIM PAY CHUAN [DIR/CEO]	210	190,471	19.346
27 May 2022 - 27 May 2022	PETDAG	EMPLOYEES PROVIDENT FUND BOARD ("EPF BOARD") [SSH]	131	117,452	11.823
25 May 2022 - 25 May 2022	PETDAG	EMPLOYEES PROVIDENT FUND BOARD ("EPF BOARD") [SSH]	1	117,320	11.809
31 May 2022 - 31 May 2022	PETGAS	EMPLOYEES PROVIDENT FUND BOARD [SSH]	90	275,778	13.937
30 May 2022 - 30 May 2022	PETGAS	EMPLOYEES PROVIDENT FUND BOARD [SSH]	64	275,688	13.933
27 May 2022 - 27 May 2022	PETGAS	EMPLOYEES PROVIDENT FUND BOARD [SSH]	124	275,624	13.929
26 May 2022 - 26 May 2022	PETGAS	EMPLOYEES PROVIDENT FUND BOARD [SSH]	34	275,500	13.923
25 May 2022 - 25 May 2022	PETGAS	EMPLOYEES PROVIDENT FUND BOARD [SSH]	118	275,466	13.921
01 Jun 2022 - 01 Jun 2022	PMBTECH	PAUL KOON PTE. LTD. [SSH]	214,760	214,760	18.256
01 Jun 2022 - 01 Jun 2022	PMBTECH	PAUL KOON FOUNDATION [SSH]	214,760	214,760	18.256
01 Jun 2022 - 01 Jun 2022	PMETAL	PAUL KOON FOUNDATION [SSH]	2,806,677	2,806,677	34.063
01 Jun 2022 - 01 Jun 2022	PMETAL	PAUL KOON PTE. LTD. [SSH]	2,806,677	2,806,677	34.063
31 May 2022 - 31 May 2022	PPB	EMPLOYEES PROVIDENT FUND BOARD [SSH]	-54	159,603	11.219
27 May 2022 - 27 May 2022	PPB	EMPLOYEES PROVIDENT FUND BOARD [SSH]	-12	159,657	11.223
25 May 2022 - 25 May 2022	PPB	EMPLOYEES PROVIDENT FUND BOARD [SSH]	-1	159,669	11.224
30 May 2022 - 30 May 2022	PRESTAR	DATO' TOH YEW PENG [DIR/CEO]	100	133,526	38.922
30 May 2022 - 30 May 2022	PRESTAR	DATO' TOH YEW PENG [SSH]	100	133,206	38.829
26 May 2022 - 26 May 2022	PRESTAR	DATO' TOH YEW PENG [DIR/CEO]	100	133,426	38.893
26 May 2022 - 26 May 2022	PRESTAR	DATO' TOH YEW PENG [SSH]	100	133,106	38.8
26 May 2022 - 26 May 2022	PRESTAR	ENCIK MD NAHAR BIN NOORDIN [DIR/CEO]	60	2,160	0.63
01 Jun 2022 - 01 Jun 2022	PWROOT	KUMPULAN WANG PERSARAAN (DIPERBADANKAN) [SSH]	155	29,241	7.131
30 May 2022 - 31 May 2022	PWROOT	KUMPULAN WANG PERSARAAN (DIPERBADANKAN) [SSH]	363	29,086	7.093
27 May 2022 - 27 May 2022	PWROOT	KUMPULAN WANG PERSARAAN (DIPERBADANKAN) [SSH]	272	28,723	7.004
31 May 2022 - 31 May 2022	QL	EMPLOYEES PROVIDENT FUND BOARD [SSH]	-2,502	164,429	6.756
30 May 2022 - 30 May 2022	QL	EMPLOYEES PROVIDENT FUND BOARD [SSH]	-165	166,930	6.859
01 Jun 2022 - 01 Jun 2022	RCECAP	TAN SRI AZMAN HASHIM [SSH]	53	426,169	58.222
01 Jun 2022 - 01 Jun 2022	RCECAP	AMCORP GROUP BERHAD [SSH]	53	390,773	53.386
01 Jun 2022 - 01 Jun 2022	RCECAP	CEMPAKA EMPAYAR SDN BHD [SSH]	53	390,773	53.386
01 Jun 2022 - 01 Jun 2022	RCECAP	CLEAR GOLD SDN BHD [SSH]	53	390,773	53.386
31 May 2022 - 02 Jun 2022	RGTECH	MR TEVANAIGAM RANDY CHITTY [DIR/CEO]	130	1,750	0.333
02 Jun 2022 - 02 Jun 2022	RHBBANK	KUMPULAN WANG PERSARAAN (DIPERBADANKAN) [SSH]	-350	225,794	5.45
31 May 2022 - 31 May 2022	RHBBANK	EMP			

Notice Period is 29 May 2022 – 04 June 2022

Effective Change Date	Stock Name	Buyer/ Seller Name [Classification]	Bought / (Sold) ['000]	No. of Shares After Trade ['000]	
			Total	Total	% Held
30 May 2022 - 30 May 2022	TM	KUMPULAN WANG PERSARAAN (DIPERBADANKAN) [SSH]	-169	396,317	10.502
26 May 2022 - 26 May 2022	TM	EMPLOYEE PROVIDENT FUND BOARD (EPF BOARD) [SSH]	324	714,053	18.922
27 May 2022 - 27 May 2022	TM	KUMPULAN WANG PERSARAAN (DIPERBADANKAN) [SSH]	-217	396,486	10.507
03 Jun 2022 - 03 Jun 2022	TOPGLOV	TAN SRI DR LIM WEE CHAI [DIR/CEO]	1,500	2,879,035	35.956
03 Jun 2022 - 03 Jun 2022	TOPGLOV	TAN SRI DR LIM WEE CHAI [SSH]	1,500	2,879,035	35.956
03 Jun 2022 - 03 Jun 2022	TOPGLOV	PUAN SRI TONG SIEW BEE [SSH]	1,500	2,879,035	35.956
03 Jun 2022 - 03 Jun 2022	TOPGLOV	MR LIM HOOI SIN [SSH]	1,500	2,878,835	35.953
03 Jun 2022 - 03 Jun 2022	TOPGLOV	MR LIM HOOI SIN [DIR/CEO]	1,500	2,878,835	35.953
03 Jun 2022 - 03 Jun 2022	TOPGLOV	MR LIM JIN FENG [SSH]	1,500	2,778,973	34.705
02 Jun 2022 - 02 Jun 2022	TOPGLOV	TAN SRI DR LIM WEE CHAI [DIR/CEO]	1,000	2,877,535	35.937
02 Jun 2022 - 02 Jun 2022	TOPGLOV	TAN SRI DR LIM WEE CHAI [SSH]	1,000	2,877,535	35.937
02 Jun 2022 - 02 Jun 2022	TOPGLOV	PUAN SRI TONG SIEW BEE [SSH]	1,000	2,877,535	35.937
02 Jun 2022 - 02 Jun 2022	TOPGLOV	MR LIM HOOI SIN [DIR/CEO]	1,000	2,877,335	35.935
02 Jun 2022 - 02 Jun 2022	TOPGLOV	MR LIM HOOI SIN [SSH]	1,000	2,877,335	35.935
02 Jun 2022 - 02 Jun 2022	TOPGLOV	MR LIM JIN FENG [SSH]	1,000	2,777,473	34.687
03 Jun 2022 - 03 Jun 2022	TSH	TAN AIK PEN [DIR/CEO]	500	267,649	19.392
02 Jun 2022 - 02 Jun 2022	TSH	TAN AIK PEN [SSH]	500	267,149	19.356
02 Jun 2022 - 02 Jun 2022	TSH	TAN AIK PEN [DIR/CEO]	500	267,149	19.356
01 Jun 2022 - 01 Jun 2022	TSH	TAN AIK PEN [SSH]	500	266,649	19.32
01 Jun 2022 - 01 Jun 2022	TSH	TAN AIK PEN [DIR/CEO]	500	266,649	19.32
31 May 2022 - 31 May 2022	TSH	TAN AIK PEN [SSH]	500	266,149	19.284
31 May 2022 - 31 May 2022	TSH	TAN AIK PEN [DIR/CEO]	500	266,149	19.284
30 May 2022 - 30 May 2022	TSH	TAN AIK PEN [SSH]	500	265,649	19.248
30 May 2022 - 30 May 2022	TSH	TAN AIK PEN [DIR/CEO]	500	265,649	19.248
27 May 2022 - 27 May 2022	TSH	TAN AIK PEN [SSH]	500	265,149	19.211
01 Jun 2022 - 01 Jun 2022	TWL	DATIN SEK CHIAN NEE [SSH]	4,860	672,601	18.946
01 Jun 2022 - 01 Jun 2022	TWL	MISS TAN LEE CHIN [SSH]	4,860	672,601	18.946
01 Jun 2022 - 01 Jun 2022	TWL	TWL CAPITAL BERHAD [SSH]	4,860	672,601	18.946
01 Jun 2022 - 01 Jun 2022	TWL	DATIN SEK CHIAN NEE [DIR/CEO]	4,860	672,601	18.946
01 Jun 2022 - 01 Jun 2022	TWL	MISS TAN LEE CHIN [DIR/CEO]	4,860	672,601	18.946
01 Jun 2022 - 01 Jun 2022	TWL	DATO' TAN WEI LIAN [SSH]	4,860	672,601	18.945
01 Jun 2022 - 01 Jun 2022	TWL	DATO' TAN WEI LIAN [DIR/CEO]	4,860	672,601	18.945
31 May 2022 - 31 May 2022	TWL	MISS TAN LEE CHIN [DIR/CEO]	4,223	667,741	18.809
31 May 2022 - 31 May 2022	TWL	DATO' TAN WEI LIAN [SSH]	4,223	667,741	18.808
31 May 2022 - 31 May 2022	TWL	DATO' TAN WEI LIAN [DIR/CEO]	4,223	667,741	18.808
31 May 2022 - 31 May 2022	TWL	DATIN SEK CHIAN NEE [DIR/CEO]	4,223	667,741	18.809
31 May 2022 - 31 May 2022	TWL	MISS TAN LEE CHIN [SSH]	4,223	667,741	18.809
31 May 2022 - 31 May 2022	TWL	TWL CAPITAL BERHAD [SSH]	4,223	667,741	18.809
31 May 2022 - 31 May 2022	TWL	DATIN SEK CHIAN NEE [SSH]	4,223	667,741	18.809
27 May 2022 - 27 May 2022	TWL	DATIN SEK CHIAN NEE [SSH]	6,505	663,519	18.69

Notice Period is 29 May 2022 – 04 June 2022

Effective Change Date	Stock Name	Buyer/ Seller Name [Classification]	Bought / (Sold) ['000]	No. of Shares After Trade ['000]	
			Total	Total	% Held
27 May 2022 - 27 May 2022	TWL	MISS TAN LEE CHIN [DIR/CEO]	6,505	663,519	18.69
27 May 2022 - 27 May 2022	TWL	MISS TAN LEE CHIN [SSH]	6,505	663,519	18.69
27 May 2022 - 27 May 2022	TWL	DATO' TAN WEI LIAN [SSH]	6,505	663,519	18.69
27 May 2022 - 27 May 2022	TWL	TWL CAPITAL BERHAD [SSH]	6,505	663,519	18.69
27 May 2022 - 27 May 2022	TWL	DATIN SEK CHIAN NEE [DIR/CEO]	6,505	663,519	18.69
27 May 2022 - 27 May 2022	TWL	DATO' TAN WEI LIAN [DIR/CEO]	6,505	663,519	18.69
31 May 2022 - 31 May 2022	UCHITEC	MR CHIN YAU MENG [DIR/CEO]	-100	530	0.117
01 Jun 2022 - 01 Jun 2022	UMS	MISS TEO YIN ZHI [SSH]	10,625	10,625	26.111
01 Jun 2022 - 01 Jun 2022	UMS	MISS ANG JWEE LEE [SSH]	417	9,117	22.405
31 May 2022 - 31 May 2022	UTDPLT	MR R. NADARAJAN [DIR/CEO]	-10	149	0.036
30 May 2022 - 30 May 2022	UTDPLT	EMPLOYEES PROVIDENT FUND BOARD [SSH]	0.4	36,285	8.748
27 May 2022 - 30 May 2022	UTDPLT	MR R. NADARAJAN [DIR/CEO]	-10	159	0.038
25 May 2022 - 25 May 2022	UTDPLT	EMPLOYEES PROVIDENT FUND BOARD [SSH]	28	36,320	8.756
31 May 2022 - 31 May 2022	UWC	EMPLOYEES PROVIDENT FUND BOARD [SSH]	438	76,194	6.918
26 May 2022 - 26 May 2022	UWC	EMPLOYEES PROVIDENT FUND BOARD [SSH]	78	75,611	6.865
01 Jun 2022 - 02 Jun 2022	WIDAD	TAN SRI MUHAMMAD IKMAL OPAT BIN ABDULLAH [SSH]	-3,665	1,439,918	52.313
01 Jun 2022 - 01 Jun 2022	WIDAD	WIDAD BUSINESS GROUP SDN. BHD. [SSH]	1,485	1,267,052	46.033
31 May 2022 - 31 May 2022	WIDAD	TAN SRI MUHAMMAD IKMAL OPAT BIN ABDULLAH [SSH]	5,335	1,443,583	52.446
31 May 2022 - 31 May 2022	WIDAD	WIDAD BUSINESS GROUP SDN. BHD. [SSH]	8,215	1,265,567	45.979
30 May 2022 - 30 May 2022	WIDAD	TAN SRI MUHAMMAD IKMAL OPAT BIN ABDULLAH [SSH]	1,200	1,438,248	52.252
30 May 2022 - 30 May 2022	WIDAD	WIDAD BUSINESS GROUP SDN. BHD. [SSH]	-9,500	1,257,352	45.68
27 May 2022 - 27 May 2022	WIDAD	TAN SRI MUHAMMAD IKMAL OPAT BIN ABDULLAH [SSH]	-6,550	1,437,048	52.209
31 May 2022 - 31 May 2022	WPRTS	EMPLOYEES PROVIDENT FUND BOARD [SSH]	4,467	249,980	7.331
01 Jun 2022 - 01 Jun 2022	WPRTS	KUMPULAN WANG PERSARAAN (DIPERBADANKAN) [SSH]	884	222,641	6.53
30 May 2022 - 30 May 2022	WPRTS	EMPLOYEES PROVIDENT FUND BOARD [SSH]	1,224	244,513	7.17
31 May 2022 - 31 May 2022	WPRTS	KUMPULAN WANG PERSARAAN (DIPERBADANKAN) [SSH]	2,125	221,757	6.504
27 May 2022 - 27 May 2022	WPRTS	EMPLOYEES PROVIDENT FUND BOARD [SSH]	428	243,289	7.135
30 May 2022 - 30 May 2022	WPRTS	KUMPULAN WANG PERSARAAN (DIPERBADANKAN) [SSH]	1,470	219,632	6.441
26 May 2022 - 26 May 2022	WPRTS	EMPLOYEES PROVIDENT FUND BOARD [SSH]	1,177	242,862	7.122
25 May 2022 - 25 May 2022	WPRTS	EMPLOYEES PROVIDENT FUND BOARD [SSH]	1,000	241,861	7.093
26 May 2022 - 26 May 2022	WTHORSE	MR LIAO HUNG-CHANG [SSH]	12,193	12,193	5.529
26 May 2022 - 26 May 2022	WTHORSE	MR LIAO HUNG-CHANG [DIR/CEO]	4,020	12,193	5.529
02 Jun 2022 - 02 Jun 2022	YINSON	MR LIM HAN WENG [DIR/CEO]	4,250	208,059	24.239
02 Jun 2022 - 02 Jun 2022	YINSON	MADAM BAH KIM LIAN [DIR/CEO]	3,000	183,425	21.369
01 Jun 2022 - 01 Jun 2022	YINSON	MR LIM HAN WENG [DIR/CEO]	3,081	203,809	23.744
01 Jun 2022 - 01 Jun 2022	YINSON	MADAM BAH KIM LIAN [DIR/CEO]	520	180,425	21.02
30 May 2022 - 31 May 2022	YSPSAH	MR TU SHU YAO [DIR/CEO]	20	2,670	1.895
26 May 2022 - 27 May 2022	YSPSAH	MR TU SHU YAO [DIR/CEO]	22	2,650	1.881
27 May 2022 - 27 May 2022	YTL	TAN SRI FRANCIS YEOH SOCK PING [DIR/CEO]	1,000	151,362	1.38
27 May 2022 - 27 May 2022	YTLPOWR	TAN SRI FRANCIS YEOH SOCK PING [DIR/CEO]	1,000	22,733	0.281
30 May 2022 - 30 May 2022	ZECON	DATUK HAJI ZAINAL ABIDIN BIN HAJI AHMAD [DIR/CEO]	36	63,266	42.849
30 May 2022 - 30 May 2022	ZECON	DATUK HAJI ZAINAL ABIDIN BIN HAJI AHMAD [SSH]	36	63,266	42.92

Disclaimer: The Information in Insider Activity is extracted from www.shareinvestor.com/fundamental/insider_trades. The information on this page is provided as a service to readers. It does not constitute financial advice and/or any investment recommendations. We assume no liability for damages resulting from or arising out of the use of such information. Whilst every effort is made to ensure accuracy, the information presented is not the official record of shareholder filings. Readers are advised to read the original filings on the Bursa Malaysia website at www.bursamalaysia.com

Invest

A Weekly e-Publication by SHAREINVESTOR.COM

ISSUE **101**
FRIDAY 01 APRIL 2022

Scan Me

MALAYSIA'S DIVERSIFIED ECONOMIC STRUCTURE WILL MITIGATE DISRUPTION RISK CAUSED BY RUSSIA-UKRAINE CONFLICT

- 02 BNM: MALAYSIA'S DIVERSIFIED ECONOMIC STRUCTURE WILL MITIGATE DISRUPTION RISK CAUSED BY RUSSIA-UKRAINE CONFLICT
- 10 LEADERBOARD
- 12 BEHIND THE ACTION
- 17 FROM THE OBSERVER
- 22 SHARIAH HOT STOCKS
- 23 COMPANY SPOTLIGHT
- 25 SHARIAH MOMENTUM UP STOCKS
- 27 NON SHARIAH HOT STOCKS
- 28 CAREERS AT SHAREINVESTOR
- 29 UP TRENDING STOCKS
- 30 GROWTH STOCKS
- 31 DIVIDEND STOCKS
- 32 LONG COMPANIES
- 34 BROKERS' CALL
- 35 INSIDER ACTIVITY
- 39 INVESTOR RELATIONS
- 41 REGIONAL MARKETS

Learn how to identify Hot Stocks using Technical Analysis (TA) and Fundamental Analysis (FA)

SIGN UP FOR Invest NOW IT'S FREE!!!

Click here

Scan me



Via email, every Friday.

Get market moving news and analyses. Regular columns include **Behind The Action** and **From The Observer**

Leaderboard • Shariah Hot Stocks • Shariah Momentum Up Stocks • Non Shariah Hot Stocks • Up Trending Stocks • Growth Stocks • Dividend Stocks • Long Companies • Insider Activity • Investor Relations • Regional Markets



AFFIN BANK BERHAD

On behalf of the Board of Directors of Affin Bank Berhad (**AFFIN**), Affin Hwang Investment Bank Berhad wishes to announce that Affin Bank Berhad has submitted an application for the proposed acquisition of 30% equity interest in a new local company to be incorporated to hold directly the entire equity interest in AXA Affin Life Insurance Berhad and enlarged AXA Affin General Insurance Berhad (which will be merged with MPIG pursuant to the Proposed Merger) to Bank Negara Malaysia.



DAYANG ENTERPRISE HOLDINGS BERHAD

The Board of Directors of Dayang Enterprise Holdings Bhd (**DAYANG**) is pleased to announce that its wholly-owned subsidiary company, Dayang Enterprise Sdn Bhd, has been awarded a contract for Provision of Maintenance, Construction and Modification (MCM) for PM8E Seligi from Enquest Petroleum Production Malaysia Ltd.



CAPITALAND MALAYSIA TRUST

CapitaLand Malaysia Trust (**CLMT**) (formerly known as CapitaLand Malaysia Mall Trust) has entered into a sale and purchase agreement to acquire two plots of contiguous freehold land and industrial properties erected therein in Sungai Jawi, Penang (the Logistics Property). This marks CLMT's entry into Malaysia's logistics sector after



the expansion of its investment mandate beyond the retail sector to include properties in commercial, office and industrial asset classes 1. CLMT intends to fund the total consideration of RM80 million for the Logistics Property with bank borrowings. Post-transaction, CLMT's gearing will increase from 35.9% to 37.2%, which remains well below the regulatory limit of 50%. The proposed acquisition will contribute positively to CLMT's earnings and is accretive at the distribution level. Subject to the fulfilment of conditions precedent, the proposed acquisition is expected to be completed in 2H 2022.



ENGINEERS

HSS ENGINEERS BERHAD

Engineering and project management consultant HSS Engineers Berhad (**HSSEB**) is eyeing RM500 million new contract wins in the current financial year, as it bids for RM375 million worth of projects.

Apart from tendering for projects within the Group's core expertise in the rail, road and water sectors, HEB Group was keen on opportunities from emerging-yet-crucial themes such as road privatizations, flood mitigation, and the digital and technology sectors.



NEXTGREEN GLOBAL BERHAD

The Board of Directors of Nextgreen Global Berhad (**NGGB**) wishes to announce that the Company had on 9 June 2022 entered into a Memorandum of Understanding with National Farmers Organization to establish a strategic cooperation for the production of organic fertilizers, animal feed and investment for the purpose of bringing the country's agricultural industry to life, in line with the national green technology agenda based on Sustainable Development Goals and thus contributing towards assisting the government to ensure the quality of the country's food supply at affordable prices.

	14th June 2022	UNITRADE INDUSTRIES BERHAD (ACE MARKET)
	20th June 2022	SFP TECH HOLDINGS BERHAD (ACE MARKET)

Disclaimer: The information in the Investor Relations page is extracted from individual companies' announcements in www.bursamalaysia.com. The information on this page is provided as a service to readers. We assume no liability for damages resulting from or arising out of the use of such information. Whilst every effort is made to ensure accuracy, the information presented has been simplified for your reading pleasure. Readers are advised to read the original and complete filings on the Bursa Malaysia website at https://www.bursamalaysia.com/market_information/announcements/company_announcement

SHAREINVESTOR WEBPRO



Stock Market Data
At Your Fingertips

Powerful browser-based market analytics platform.
Access from anywhere



click here to start your
9 Day free trial

ShareInvestor is a technology based company with a focus on Internet media and we have operations in Malaysia, Singapore and Thailand.

We are the market leader in providing a combination of market data, analysis and news on various platforms to traders and investors.

Our websites include www.shareinvestor.com and www.bursastation.com.
More information about our products and services can be found at www.shareinvestorholdings.com

We're looking for Drupal Developers who will be in charge of front-end development and back-end/module development. This role requires expertise in PHP, HTML, CSS, JS, and an eye for design aesthetics. The candidates should be familiar and have a passion working with content management systems.

Interested candidates are encouraged to apply with full resume, present and expected salary and a recent photograph.

Please send these to hr.my@shareinvestor.com for processing. ShareInvestor regrets that only shortlisted candidates shall be notified.

Drupal Developers (2 vacancies)

Job Responsibilities:

- Active participation in all UI / UX decisions
- Contribute actively to the continuous development and maintenance of development projects
- Enhance Drupal development quality
- Provide solutions to issues and suggestions for improvements.
- Designing and implementing new features to the system
- Ensuring optimal performance

Required Skills:

- At least 3 years of Drupal Theming and Front-End Development experience
- Proficient in PHP, HTML5/XHTML, CSS, Javascript, jQuery, AJAX, XML, Json
- Good Diploma/Degree in Computer Science/Computer Engineering.
- Experience working with Drupal's main modules, such as CTools, Views, Rules, Webform, and so on
- Ability to create custom Drupal modules
- Strong troubleshooting skills to fix bugs

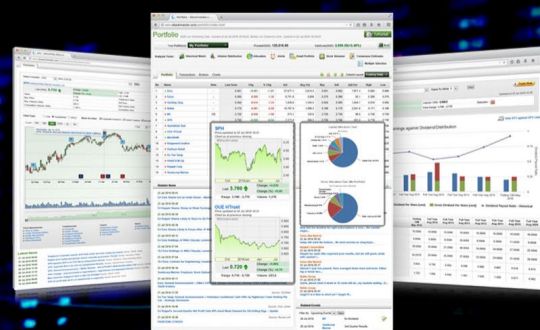
Benefits:

- Career & growth opportunities
- Interesting projects
- Medical Insurance
- Incentives

SHAREINVESTOR MARKET DATA PLATFORMS



**SHAREINVESTOR
STATION**
Advanced Charting Software
(8 Markets)



**SHAREINVESTOR
WEBPRO**
Browser-Based Market Data
Analytics Platform



BURSASTATION
Advanced Charting Software
(Bursa Malaysia Only)

ShareInvestor is a technology based company with a focus on Internet media and we have operations in Malaysia, Singapore and Thailand.

We are the market leader in providing a combination of market data, analysis and news on various platforms to traders and investors.

Our websites include www.shareinvestor.com and www.bursastation.com.

More information about our products and services can be found at www.shareinvestorholdings.com

We are looking for Developers to join our team, in a challenging, yet fun and fulfilling environment. The successful applicants will leverage on the latest Internet technologies to help create financial applications and platforms for investors, listed companies and financial institutions. Fresh graduates are welcome to apply.

Interested candidates are encouraged to apply with full resume, present and expected salary and a recent photograph.

Please send these to hr.my@shareinvestor.com for processing. ShareInvestor regrets that only shortlisted candidates shall be notified.

Ruby on Rails Developer (1 vacancy)

Responsibilities:

- Develop quality web-based software modules on schedule with a focus on Ruby and Ruby on Rails applications.
- Explore and utilize the latest web-based technologies.
- Document design specifications, logic concepts and module description.
- Maintain and enhance existing web-based applications.

Requirements:

- Experience in web-based programming/scripting is essential. Candidate must be able to explain clearly technical aspects of his/her past experiences and projects.
- Passion for programming and desire to learn new languages like Go.
- Good Diploma/Degree in Computer Science/Computer Engineering.
- Able to work well in a team and be able to follow documentation and coding standards.
- Knowledge in any of the following would be an added advantage
 - Ruby and Ruby on Rails Framework
 - Javascript and jQuery library
 - Go
 - Perl

Application Developer (C++/STL) (1 vacancy)

Responsibilities:

- Deliver quality software modules on schedule.
- Document design specifications, conceptions, module description.
- Maintain and enhance existing applications.

Requirements:

- Passion for programming and desire to learn.
- Good Diploma/Degree in Computer Science/Computer Engineering.
- Skills in C++ is essential.
- Experience with Visual Studio, networking stack and Golang would be an advantage.
- Proactive, resourceful and self-motivated with strong analytical skills.
- Good interpersonal, written and communication skills.
- Able to work with little supervision.