

Invest

A Weekly e-Publication by SHAREINVESTOR.com



Selamat Hari Raya

Aidulfitri

From all of us at



SHAREINVESTOR[®]
MALAYSIA

SHAREINVESTOR
STATION

SHAREINVESTOR
WEBPRO

BURSA STATION

Invest

A Weekly e-Publication by SHAREINVESTOR.com

ISSUE

105

FRIDAY
29 APRIL
2022

Scan Me



Via email, every Friday

IMMEDIATE INCREASE IN MINIMUM WAGE

MAY REVERSE BUSINESS RECOVERY - FMM

03 IMMEDIATE
INCREASE IN
MINIMUM WAGE
MAY REVERSE
BUSINESS
RECOVERY -
FMM

08 LEADERBOARD
10 BEHIND THE ACTION
16 FROM THE OBSERVER
21 SHARIAH HOT STOCKS
22 COMPANY SPOTLIGHT
24 SHARIAH MOMENTUM UP
STOCKS
26 NON SHARIAH HOT STOCKS
28 UP TRENDING STOCKS

29 CAREERS AT SHAREINVESTOR
31 GROWTH STOCKS
32 DIVIDEND STOCKS
33 LONG COMPANIES
35 BROKERS' CALL
36 INSIDER ACTIVITY
39 SPECIAL EVENT
43 INVESTOR RELATIONS
46 REGIONAL MARKETS



SHAREINVESTOR®

Invest with Knowledge

CORPORATE

Managing Director (Malaysia) & Publisher
Edward Stanislaus
edward@shareinvestor.com

SALES & MARKETING

Director
Elizabeth Tan
elizabeth.tan@shareinvestor.com

Online IR

Manager
Letticia Wong
letticia.wong@shareinvestor.com

Advertising & Sponsorship Sales

Manager
Sharon Lee
sharon.lee@shareinvestor.com

MARKET DATA ANALYTICS

(marketdata.my@shareinvestor.com)
Account Manager
Foo Yong Jui
yongjui.foo@shareinvestor.com
Account Manager
Heidee Ahmad
heidee.ahmad@shareinvestor.com
Coordinator Watie Nordin

MARKET DATA ANALYTICS & EDITORIAL

Market Data & Media Coordinator
Silas Emmanuel Joseph
silas.joseph@shareinvestor.com

MARKET DATA ANALYTICS & EDITORIAL

Market Data Analyst
Nickson Aw
nickson.aw@shareinvestor.com

MARKETING COMMUNICATIONS

Marcomm Manager
Danny Ng

CREATIVE & DESIGN

Manager		Andric See
Asst. Manager		Ivy Yap
Web Developer		Nurul Atiqah
		Aiman Jasmin
		Izwa n Rusli
		Umairah Ishak

IT APPS

Project Manager		Amir Yusoff
Sr. Software Engineer		Mohd. Qasem
Software Engineer		Lian Kok Keong

FINANCE, ADMIN & HR

Manager		Shireen Goh
Sn. Accounts Executive		Jessie Ho
Accounts Assistant		Ng Jin Yng

SHAREINVESTOR HOLDINGS

Chairman		Patrick Daniel
Group CEO		Christopher Lee
Group COO		Lim Dau Hee
Group CFO		Teo Siew May



ShareInvestor Malaysia Sdn. Bhd. (200001023956) (526564-M)
(Formerly known as SI Portal.com Sdn. Bhd.)
Unit No. DF2-07-03A, Level 7,
Persoft Tower, 6B Persiaran Tropicana,
47410 Petaling Jaya, Selangor Darul Ehsan.

Hotline : 603 7803 1791
Mobile : 011 6343 8939
Fax : 603 7803 1792

Website : www.ShareInvestor.com.my
www.ShareInvestorHoldings.com
www.facebook.com/ShareInvestorMalaysia



**SHAREINVESTOR
WEBPRO**

C² CHART

C² Chart is WebPro's new feature-packed technical analysis tool for the modern stock investor



Over 100 Indicators
Select your preferred indicators to best suit your technical strategies



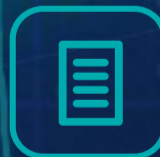
Drawing Tools
Multiple drawing tools to easily identify chart patterns



Events Indicators
Key events can be pinned onto your charts for a better overview



Compare Tool
Conveniently compare multiple stock prices at the same time



Historical Data
Extract price data from over 30 years



Over 10 Chart Styles
Various charts to suit your preferred style



No App Needed
Access your charts from any computer or mobile



Easy Zoom
Intuitive zooming function on charts

IMMEDIATE INCREASE IN MINIMUM WAGE MAY REVERSE BUSINESS RECOVERY - FMM

According to President of The Federation of Malaysian Manufacturers (FMM) Tan Sri Soh Thian Lai, FMM has raised concerns that the immediate jump to RM1,500 for minimum wage from May 1 may result in a steep cost increase and reverse the otherwise optimistic business recovery for 2022. The increase from the current RM1,200/RM1,100 to RM1,500 represents an immediate increase of 25-36% on the basic salary which will have a tremendous knock-on effect on the overall payroll cost and have a spiralling impact on business cost that could potentially derail the economic recovery. The industry has repeatedly affirmed that it is supportive of a review of the minimum wages but based on the current economic factors where the business environment continues to be fragile, a progressive adjustment with a RM150 increase in 2022 and a further increase of RM150 in 2023 to reach the RM1,500 minimum wage would be more manageable for the industry. The small and medium enterprises (SMEs), especially those in the suburban areas would be most impacted by this sharp rise in wage cost given that only the micro-enterprises will be exempted for a period of eight months until December 2022. The economy would also see an immediate monthly outflow of close to RM500 million with the repatriation of funds by foreign workers (based on 1.6 million legal foreign workers) with no direct positive impact on the local economy. As it is, the industry is facing an influx of cost increases as businesses continue to rebuild their performance to the

pre-pandemic levels, including raw materials cost, logistics cost, and higher energy prices due to the rising commodity prices. Ultimately, the increase in minimum wages is going to further push cost of production and lead to greater inflationary pressures.

NEAR-TERM ECONOMIC GROWTH MOMENTUM TO EASE BASED ON FEBRUARY'S LEADING INDEX - DOSM

According to Department of Statistics Malaysia (DOSM) chief statistician Datuk Seri Dr Mohd Uzir Mahidin, Malaysia's Leading Index (LI) recorded a healthier month-on-month (m-o-m) trend in February 2022, increasing to 110.8 points from 110.1 points in the preceding month. However, the annual LI showed a slower performance at negative 0.5%, signifying that near-term growth momentum would ease amid continued economic recovery. This was influenced by cautious investor sentiment in the stock market which was reflected by the downtrend in the Bursa Malaysia Industrial Index, backed by the healthcare and utilities indices during the month. On the m-o-m LI increase of 0.5% in the reference month, this was mainly contributed by growth in real imports of other basic precious and other non-ferrous metals (0.6%), real imports of semiconductors (0.4%) and Bursa Malaysia Industrial Index (0.2%). The LI is a predictive tool used to anticipate economic upturns and downturns in an average of four to six months ahead. The ongoing international crises have exerted further pressure on global economic growth through trade, inflation and financial markets, which in turn could disrupt the growth prospects of the Malaysian economy. Pertaining to current economic perspective, the Coincident Index sustained its growth by expanding 6.4% to 120.4 points in February 2022, from 113.2 points a year earlier.

BURSA Q1 NET PROFIT FALLS 44% AS REVENUE SLIDES FROM PANDEMIC HIGH

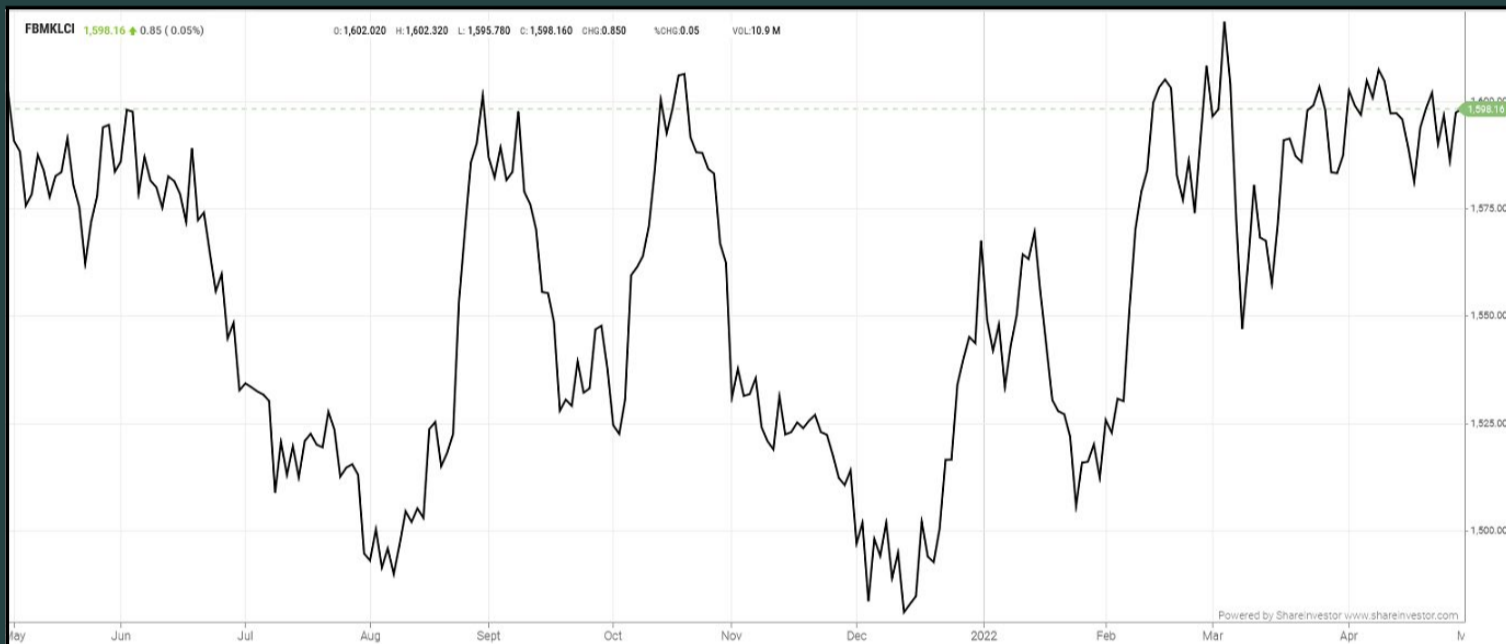
Bursa Malaysia Bhd's net profit fell 44% to RM67.97 million in the first quarter ended March 31, 2022 from RM121.39 million reported in the same quarter of the previous year, attributed to a lower operating

revenue due to a decline in securities trading revenue. Revenue for the quarter stood at RM165.3 million, a 29.4% drop from RM232.28 million reported previously. The securities market segment saw a 40.2% decline in profit to RM104.4 million in Q1'22 from RM174.6 million Q1'21 due to lower revenue, while its derivatives market segment posted a RM12.9 million profit for the quarter from RM11.6 million reported previously on the back of higher revenue. In addition, Bursa's exchange holding company saw a lower loss of RM4.3 million for the quarter against RM5.1 million reported previously due to lower corporate social responsibility expenses and its others segment saw a 22% hike in profit of RM2.1 million from RM1.7 million. Its overhead rose by 12.3% to RM22.5 million from RM20 million in Q1'21 mainly due to higher depreciation and amortisation of assets.

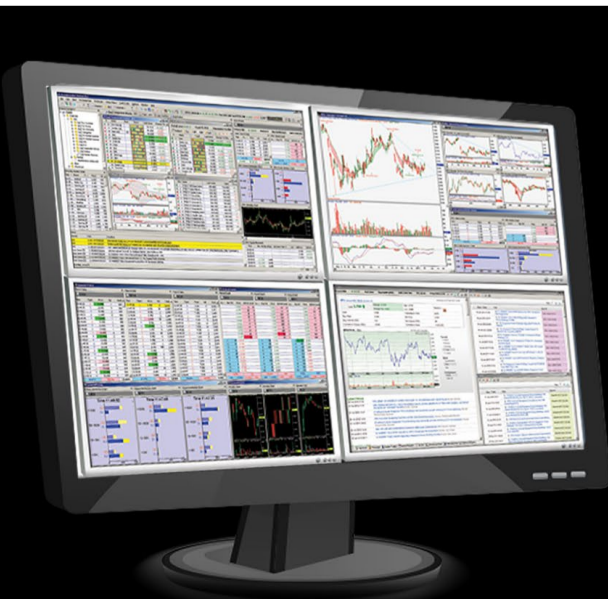
According to Bursa CEO Datuk Umar Swift on the results, he pointed out that the average daily trading value of securities continued to normalise to pre-pandemic levels which contributed to the decline in profit for the quarter. However, profit after tax is 4.6% higher than the fourth quarter ended Dec 31, 2021 of RM65million, mainly contributed by a 2.8% higher average daily trading value registered this quarter. However, with the reopening of the economy and international borders, Bank Negara Malaysia expects Malaysia's growth forecast to be between 5.3% to 6.3%. As such, better economic growth can be expected as the nation moves towards the endemic phase, and we anticipate more trading opportunities for investors due to movements in CPO prices, interest rate policies and the FBM KLCI. To sustain the interest of global investors, the bourse will continue to enhance the attractiveness of listed issuers through initiatives such as the Public Listed Companies Transformation programme launched earlier this year. Further, and in line with the Sustainable and Responsible Investment and environmental social governance agendas, the exchange will continue to deliver new product and service offerings as well as the new voluntary carbon trading platform, which will enhance the breadth and depth of the ecosystem.

EYE ON THE MARKETS

This week, on Friday (29Apr), the Ringgit opened at 4.3630 against the USD from 4.3335 on Monday (25Apr). Meanwhile, the Ringgit was 3.1500 to the Sing Dollar on Friday (29Apr). On Monday (25Apr), the FBM KLCI opened at 1599.38. As at Friday (29Apr) 10:00am, the FBM KLCI is down 1.85 points for the week at 1597.53. Over in US, the overnight Dow Jones Industrial Average closed up 614.46 points (+1.85%) to 33,916.39 whilst the NASDAQ added 382.60 points (+3.06%) to 12,871.53.



KLCI 1 Year Chart



SHAREINVESTOR STATION

The advanced analytics software designed for today's active traders

Fully Customisable . Powerful Charting .
Multiple Platform Access . High Speed Updates .
Price Movements . Screener (FA & TA)

[click here to start your 18 days free trial](#)

PURNELL

ONLY TOURBILLON



ESCAPE II FORGED CARBON

Purnell Asia

Tel.: +65.9817.3378

Email: sales.sg@purnellwatches.com

Instagram: [Purnell_Official](#)

Website: www.purnellwatches.com

PLAY



www.shareinvestor.com - market data at your fingertips



ShareInvestor WebPro (www.shareinvestor.com/my)
Prices > Stock Prices > Bursa > click Stocks tab

1. mouse over Ranking > select Top Active > all Shariah stocks are denoted with an [S] > mouse over Column Layout > select Edit Customs > select Name > select Volume > select Last Done Price > Mouse Over Column Layout > select Custom
2. mouse over Ranking > select Top Turnover > all Shariah stocks are denoted with an [S] > mouse over Column Layout > select Edit Customs > select Name > select Last Done Price > select Value > Mouse Over Column Layout > select Custom
3. mouse over Ranking > select Top Gainers (Over 5 Trading Days) > mouse over Column Layout > select Edit Customs > select Name > select Last Done Price > select 5 Days Change > select 5 Days % Change > Mouse Over Column Layout > select Custom
4. mouse over Ranking > select Top Losers (Over 5 Trading Days)
5. mouse over Ranking > select Top % Gainers (Over 5 Trading Days)
6. mouse over Ranking > select Top % Losers (Over 5 Trading Days)

Shariah Top Actives (as at Yesterday)

Name	Price (RM)	Volume
MNHLDG [S]	0.235	2,125,489
TECHNAX [S]	0.120	1,593,864
ANZO [S]	0.015	1,418,984
TANCO [S]	0.340	516,563
SAPNRG [S]	0.035	445,506
PASUKGB [S]	0.020	378,216
KNM [S]	0.150	369,556
WIDAD [S]	0.360	324,321
AHB [S]	0.200	304,158
CHEETAH [S]	0.205	255,253

Shariah Top Turnover (as at Yesterday)

Name	Price (RM)	Value (RM)
PCHEM [S]	10.100	105,727,524
IOICORP [S]	4.680	80,450,879
KLK [S]	29.280	73,317,536
PMETAL [S]	5.990	58,308,075
MNHLDG [S]	0.235	51,003,703
INARI [S]	2.850	36,218,047
SIMEPLT [S]	5.230	34,548,083
TENAGA [S]	9.010	32,485,616
MISC [S]	7.810	31,393,396
IHH [S]	6.650	26,663,623

Top Gainers (over 5 Trading days as at Yesterday)

Name	Price (RM)	Change (RM)
NESTLE	135.700	+2.900
BKAWAN	29.000	+1.520
KLK	29.280	+1.000
HENGYUAN	5.210	+0.850
CARLSBG	22.380	+0.760
F&N	22.800	+0.720
BLDPLNT	9.500	+0.500
RAPID	11.780	+0.420
PETRONM	5.250	+0.310
HLBANK	21.000	+0.300

Top % Gainers (over 5 Trading days as at Yesterday)

Name	Price (RM)	Change (%)
COMPUGT	0.015	+50.00
MTRONIC	0.020	+33.33
XOX	0.020	+33.33
ANCOMLB	0.190	+22.58
HENGYUAN	5.210	+19.50
QUALITY	1.360	+18.26
ILB	0.475	+17.28
CHEETAH	0.205	+17.14
AEM	0.035	+16.67
AMLEX	0.390	+16.42

Top Losers (over 5 Trading days as at Yesterday)

Name	Price (RM)	Change (RM)
PETDAG	20.620	-1.080
UTDPLT	15.220	-1.061
MPI	31.440	-1.060
MSC	4.690	-0.740
PMETAL	5.990	-0.600
KESM	8.050	-0.350
PANAMY	28.400	-0.340
ANCOMNY	3.400	-0.300
GENETEC	2.220	-0.300
PCHEM	10.100	-0.280

Top % Losers (over 5 Trading days as at Yesterday)

Name	Price (RM)	Change (%)
ANZO	0.015	-50.00
PGB	0.205	-35.94
FINTEC	0.010	-33.33
IQZAN	0.045	-30.77
EURO	0.175	-30.00
ARTRONIQ	0.750	-25.00
AT	0.015	-25.00
DGB	0.015	-25.00
JERASIA	0.035	-22.22
SAPNRG	0.035	-22.22

REITS SYMPOSIUM

FRIDAY APRIL 29, 2022

Invest | 9

THE MEGA HYBRID EVENT OF 2022!

HYBRID EVENT

REGISTER ONLINE, GET TICKETS TO ATTEND IN-PERSON!

1 DAY **16** SESSIONS **30** SPEAKERS

ENGAGE WITH REIT CEOS AND REITS EXPERTS!



21 MAY 2022



9AM - 6PM

REGISTER NOW!

JOINTLY ORGANISED BY



REITAS

PARTICIPATING REITS



STRATEGIC SPONSORS



A 50bps HIKE BAKED-IN



Pankaj C Kumar

Pankaj is a former CIO and Head of Research, presently focused on economic, market and corporate analyses. The views expressed here are entirely the writer's own.

When the Federal Open Market Committee (FOMC) meets next week, the committee members are expected to vote in favour of a 50bps hike with extreme certainty following comments made by the Fed chair last Friday. Interestingly, another 50bps is also on the card in FOMC's June meeting as Jerome Powell cited minutes from the last policy meeting that noted "one or more" 50 basis-point hikes could be appropriate to curb the hottest inflation in four decades. The hawkish comment and rising expectations of a faster pace of increase in rates by the Fed spooked markets. Equity markets tumbled, bonds yields surged and Dollar advanced to its highest level in five years while the Ringgit tanked to its lowest level in two years against the greenback and was last seen at 4.3640 to the Dollar.

Meanwhile, Malaysia saw a quick change at the Securities Commission as Datuk Syed Zaid Albar has tendered his resignation as executive chairman and the Ministry of Finance has appointed Datuk Dr. Awang Adek Hussin to helm the capital market regulator with effect from June 1, 2022. In other news, the Minimum Wage Order 2022 has been gazetted which will see the implementation of RM1,500 minimum wage with

effect from May 1, 2022. An exemption is also given to employers with less than five employees for the rest of 2022 with the order taking effect on January 1, 2023.

ECONOMY

Out of the US, the Conference Board's April Consumer Confidence dropped to 107.3 from the revised 107.6 in March and below the market's median forecast of 108.2. Meanwhile, data from Commerce Department showed March Durable Goods Order improved 0.8% m-o-m, reversing the revised 1.7% drop in the preceding month. Still, the increase was below the consensus estimate of a 1% rise. From the US housing market, New home sales for March plunged 8.6% m-o-m and 12.6% y-o-y to an annual rate of 763,000 units last month as February's sales pace was revised higher to 835,000 units. Similar weak reading was also seen in the US Pending Home Sales Index, which fell by 1.2% last month to 103.7 – the fifth straight monthly decline and pushed contracts signed to the lowest level since May 2020.

US 1Q GDP came in surprisingly weak as the world's largest economy contracted by 1.4% y-o-y, well below the consensus expectations of a 1% growth and a reversal from the stellar 6.9% growth achieved in the 4Q period of 2021 and 6.1% growth for the same quarterly period in 2021. Out of Europe, the S&P Global Flash Eurozone Composite Purchasing Managers' Index (PMI) for April rose to 55.8 from March's print of 54.9 and at a fresh 7-month high as the loosening of Covid-19 restrictions boosted the services component of the index. However, the Flash Eurozone Manufacturing PMI dropped to just 50.4 from March's reading of 53.1. In GDP data, South Korea and Taiwan's 1Q 2022 economic output expanded by 3.1% and 3.06% y-o-y respectively, both were ahead of market expectations of an identical 2.8% increase y-o-y. Down south, Singapore's March Consumer Price Index (CPI) rose by 5.4% y-o-y from the preceding month's print of 4.3% while core inflation surged to a 10-year high of 2.9% from 2.2% in February.

Locally, the March 2022 CPI came in at 2.2% while core inflation continued its ascent, rising by 2% y-o-y against a 1.8% y-o-y increase

in February and 1.6% in January. Meanwhile, the Producer Price Index-Local Production for March accelerated with an increase of 11.6% y-o-y in March, faster than the 9.7% y-o-y pace in February. In other news, Indonesia's move to ban the export of Crude Palm Oil (CPO) Refined, Bleached, and Deodorised (RBD) palm olein and RBD palm oil with effect from April 28 was seen as a temporary measure to ensure domestic prices are stabilized. Meanwhile, the automotive sector saw strong data in March as according to The Malaysian Automotive Association (MAA), Total Industry Volume (TIV) surged by 12.9% y-o-y to 73,222 units to a new monthly record high, bringing the cumulative 1Q 2022 TIV of 159,752 units, up 12.7% y-o-y. Separately, the first sign of a significant decline in international reserves was seen this week as according to Bank Negara, Malaysia's international reserves fell by US\$1.2bil or RM5bil to US\$114.4bil or RM480.85bil as at 15 April 2022.

CORPORATE

Fraser & Neave Holdings (FNH) 65% owned subsidiary, Dagang Sejahtera Sdn. Bhd. has acquired the entire 100% stake in Ladang Permai Damai for RM215.6m in cash. The acquisition will enable FNH to venture into integrated dairy farm production and plantation. KPower has entered into a Heads of Agreement to acquire One River Power Sdn. Bhd. (ORP) in a deal worth RM130mil in cash and new KPower shares. ORP is involved in the development of three hydropower plants in Sabah with a total combined power generation of 29.1 MW. In other news, SP Setia has proposed to undertake a rights issue involving the issuance of 1,221.2bil Islamic Redeemable Convertible Preference Shares Class C (RCPS-i C) on the basis of 3 RCPS-i C for every 10 shares held at an indicative issue price of RM0.85 per RCPS-i C. Under the base case scenario, proceeds from the rights issue will be used to redeem in its entirety the RCPS-i Class B worth some RM1.04bil. The RCPS-i C is expected to have a conversion ratio of 11 new SP Setia shares for every 18 RCPS-i C. Meanwhile, Top Glove Corporation's plans to be listed on the Hong Kong Stock Exchange have stalled yet again as its application for the initial public offering has lapsed. No decision has been made yet whether the world's largest glovemaking intends to pursue the listing

plan or otherwise. Vortex Consolidated has entered into an agreement with Aset Kayamas to acquire 187 units of an on-going property development project known as Antara@Genting located in Genting Highlands for RM246.4mil.

EQUITY

Global markets experienced one of the biggest market sell-off in recent times as markets reacted negatively to the hawkish Fed comments as well missed earnings by several large US companies. All major indices fell for the week in review with losses of between 0.1% to as much as 7.2% on the Nasdaq 100. Stocks on Bursa Malaysia closed the week just marginally weaker as a rally in CPO following the ban on exports of palm products by Indonesia lifted the plantation-based stocks firmer across the board. The KLCI closed at 1,597.31 pts, down 1.01 pts or 0.1% w-o-w. For the week ended April 28, foreign market participants turned net buyers again after last week's mild exodus with an inflow of RM283.9mil. Retail market participants too were net buyers in the market with an inflow of RM178.5mil, while local institutions maintained their net selling position with an outflow of RM462.4mil.

EYE ON WEEK AHEAD

Later today, Bank Negara will be releasing the detailed disclosure of its international reserve position at end of March 2022 as well as the monthly statistical bulletin, which also incorporates the banking statistics for the same month. The Eurozone 1Q 2022 GDP data is also due later today, with the market looking at a growth of 5% y-o-y, against 4.6% in the preceding quarter. Out of the US, the all-important headline and core Personal Consumption Expenditure for March are due with economists expecting a reading of 6.5% and 5.3% respectively. The final Michigan Consumer Sentiment Index will also be released later today, which is expected to show a final reading of 62.0. Over the weekend, China will be releasing both the official manufacturing and non-

manufacturing PMI for April with the market expecting readings of 49.8 and 53.0 from 49.5 and 48.4 in March respectively. On Monday, May 2, the S&P Global Eurozone Manufacturing PMI, the J.P. Morgan Global Manufacturing PMI, and the US Institute of Supply Management (ISM) Manufacturing PMI for April will be released. On Tuesday, May 3, the Reserve Bank of Australia is expected to keep its Cash Rate at an all-time low of 0.1%.

On Wednesday, May 4, the Federal Open Market Committee (FOMC) is expected to raise the Fed Fund rate by 50bps to between 0.75%-1.00%. On the same day, the S&P Global Eurozone Composite PMI and the ISM Services PMI for April are expected to be out, while the next day, the S&P Global Manufacturing PMI for ASEAN and Malaysia will be released followed by the J.P. Morgan Global Composite PMI later on the same day. The Bank of England too may be raising its benchmark interest rate by another 25bps to 1.00% when it meets on Thursday, May 5. On Friday, May 6, the key US labour market statistics for April will be released with the market looking at Non-Farm Payroll at 400,000 while the unemployment rate is expected to stay steady at 3.6%.

The following week, China will be releasing its April external trade data on Monday, May 9 while on Wednesday, May 11, China's April CPI and Producer Price Index (PPI) are due as well. On the same day, the US will be reporting both the headline and core inflation data for April.

Locally, economic data for the following week after the Hari Raya break will include the release of the March labour market indicators, the Index of Industrial Production, and the Monthly Manufacturing statistics on May 10, followed by the performance of the Wholesale and Retail Trade on May 12. However, the more important data for the week post the Hari Raya break will be the Monetary Policy Statement on May 11, as Bank Negara is seen holding the rate steady at 1.75%, followed by the release of the 1Q 2022 GDP data on Friday, May 13.



Italian Masterpieces

Coupé De Luxe bed designed by GamFratesi

Grant ottoman designed by Tristan Auer

poltronafrau.com



XTRA

The Gardens Mall, Mid Valley City, Lot S-236 & 237
2nd flr Linkaran Syed Putra, Kuala Lumpur
T. +603 2282 9088 | living@xfurniture.com | xfurniture.com
f XTRAfurniture | @xfurnituremsia



GLICS TO EMBED PRINCIPLES ON GOOD GOVERNANCE TO ENHANCE TRANSPARENCY



Devanesan
Evanson

**Chief Executive
Officer, Minority
Shareholders Watch
Group**

It is commendable that the Finance Ministry has stepped up a gear by mooted the Principles on Good Governance (PGG) which is to be applied on government-linked investment companies (GLICs). PGG serves as the sole reference to governance baseline and sustainability practices for all GLICs to enable the latter better prepare themselves for the adoption of environmental, social and governance (ESG) elements in their investment strategies. The PGG was supported by three key principles consisting of ((i) leadership and effectiveness of the board of directors; (ii) strengthening the board of directors' composition; and (ii) encouraging accountability and transparency in investment management. It was prepared after taking into consideration standards, practices and discussions relating to public and corporate governance locally and abroad, including the Malaysian Code on Corporate Governance (MCCG) which was updated by the Securities Commission (SC) in 2021. Its aim is to promote accountability and

transparency across entities including the GLICs with their stakeholders which encompass the Government, the suppliers in the ecosystem and the public.

Malaysia's GLICs consist of six organisations, namely the Employees Provident Fund (EPF), Permodalan Nasional Bhd (PNB), Retirement Fund (Incorporated) (KWAP), Khazanah Nasional Bhd, pilgrimage fund Lembaga Tabung Haji (Pilgrims Fund Board) and Lembaga Tabung Angkatan Tentera (Armed Forces Fund Board). The six GLICs have a total asset under management of RM1.7 trillion, thus making the GLICs one of the main pillars of Malaysia's socio-economic development. In fact, if the PGG method can work, it can be extended to government-linked companies (GLCs) which account for 42% of the total market capitalisation of Bursa Malaysia. Meanwhile, GLICs own 25.9% of the total market capitalisation of the local bourse, representing RM440.4 billion in assets under management. (StarBiz, "Greater GLC participation in nation-building", 30 October 2021). As such, what GLICs, and to a lesser extent, the GLCs, do or not do has a tremendous impact on the market and the residual impact is felt by minority shareholders.

STRENGTHEN FOUNDATION

According to Finance Minister Tengku Datuk Seri Zafrul Abdul Aziz, the PGG was part of the GLIC/GLCs transformation programme spearheaded by the treasury in the past 18 months which includes the Government's earlier Perkukuh Pelaburan Rakyat (PERKUKUH) initiative launched in August 2021. We had written about this initiative and commented that it was a timely and worthwhile initiative to propel the capital market and business ecosystems to a higher level. Such initiative is intended to contribute to optimising the Government's fiscal resources, improving management, hitting targets, spurring new growth through strategic sectors and invigorating investments in the sustainable industry.

Another pressing need following the impact of COVID-19 is the restructuring of the social security system. The Government has also

started relevant projects such as setting up an integrated ecosystem to explore digital-based industries, Fourth Industrial Revolution (IR 4.0) and 5G (fifth generation mobile network). Tengku Zafrul has touched on all the key points if we pause and reflect on his statement – directors should lead by example with obligations of accuracy, transparency and loyalty and that the appointment and qualification of a director should be given significant emphasis. Directors set the tone at the top and determine the board culture which emanates downwards as the corporate culture. Get the board right and all else falls into place properly.

ESG TO THE FORE

Aside from ensuring all GLICs can provide good stewardship, the PGG also recommends the establishment of a governance structure for the oversight of ESG elements in their future investment strategies. Against the backdrop of ESG issues such as flash floods, natural disasters, environmental pollution as well as issues closely related to the social aspects such as poor treatment of foreign workers getting more frequent, GLICs should be prepared to face the increasing market demand for ESG practices. This is vital given that various global data have shown that companies focusing on ESG issues have managed to reduce costs, increase employee productivity, reduce various business risks as well as create more jobs and business opportunities.

REFORMS AND CENTRAL COORDINATION NECESSARY TO STEM CORRUPTION IN GLCS

Following the latest issues and allegations impacting some government-linked companies (GLCs), there is a louder call from the public on the Government to institute reforms on how GLC's are run to ensure transparency and accountability. Among all, non-governmental organisation (NGO) Rasuah Busters had urged the government to step up their efforts in reforming GLCs in ensuring they are transparent and

accountable to taxpayers. “The core idea is when a GLC embarks on a project, its original purpose is to generate growth through strategic sectors. The revenue generated from this was supposed to be used to provide greater socio-economic relief to the people,” said Rasuah Busters CEO Nurhayati Nordin. GLCs have the unenviable challenge of balancing the need ‘to provide greater socio economic relief to the people’ with their obligations to the shareholders of the GLCs who have parted with their money to invest in the GLC.

MSWG has always maintained that some of the GLCs need to regain their lustre as they have traditionally been the ‘go to’ investment for minority shareholders solely and especially because they are government-linked.

This article appeared in the The Observer, a weekly newsletter published by The Minority Shareholders Watch Group (MSWG) and reproduced here with their permission.

Do follow MSWG's Twitter account at @MSWGMalaysia and share your thought on their tweets from time to time.

SHAREINVESTOR WEBPRO

Stock Market Data At Your Fingertips

Powerful browser-based market analytics platform.
Access from anywhere

click here to start your 9 Day free trial



ShareInvestor App is now available on iOS

Gain access to free data while on the move.
Keep abreast with all company's movement and price trend, and more!

Prices of companies across **7 markets**

Company's **key statistics** and financial health

Latest company news and **market movements**

Recorded time and sales of every counter daily

Events
Compilation of corporate actions

ShareInvestor Station and ShareInvestor WebPro members rejoice!
Log in and access even more features:

FINANCIAL RATIOS
Snapshot of stock price and statistics that helps to make timely decision.

CONSENSUS ESTIMATES
Analysts' forecast of a company's forward earnings

CHARTING TOOL
Comprehensive and customizable to your preference

DIVIDENDS
History of each company and new insights to its pay-out trends



Price & Volume Distribution Charts (as at Yesterday)

Technical Analysis

DEFINITION: Shariah compliant stocks with Technical Analysis showing 5-days & 10-days Moving Average Price below Yesterday's Close over past 3 days and with Volume Spike.

CHART GUIDE: Volume Distribution Chart is a statistical interpretation of the current sentiment on each stock in graphical format. The highest bar categorized as >150k is likely to be traded by institutions or super dealers, while the lowest bar categorized as <15k usually represents retail investors. "Buy Up" refers to more buyers snatching up the lots queued at selling price. "Sell Down" refers to sellers selling their shares to the buying queue



ShareInvestor WebPro > Screener > Market Screener (FA & TA) > select BURSA > add criteria

A. Criteria

- > click Add Criteria
- Technical Analysis Conditions tab select (i) Moving Average Below Close (ii) Volume Spike
- Fundamental Analysis Conditions tab > select (iii) Revenue
- Prices & Other Conditions tab > select (iv) Is Shariah Compliant
- Technical Analysis Conditions tab select (v) Moving Average Below Close
- Prices & Other Conditions tab > select (vi) Last Done Price
- Technical Analysis Conditions tab select (vii) Moving Average Below Close

B. Conditions (Criteria Filters)

- Moving Average Below Close - select (MA) type (5) below close price for type (3) days
- Volume Spike - Volume type (1) greater than type (5) days average
- Revenue ("000) - select (more than) type (1) for the past select (1) financial year(s)
- Is Shariah Compliant - select **Yes**
- Moving Average Below Close - select (MA) type (10) below close price for type (3) days
- Last Done Price - select (more than) type (0.3)
- Moving Average Below Close - select (EMA) type (5) below close price for type (3) days

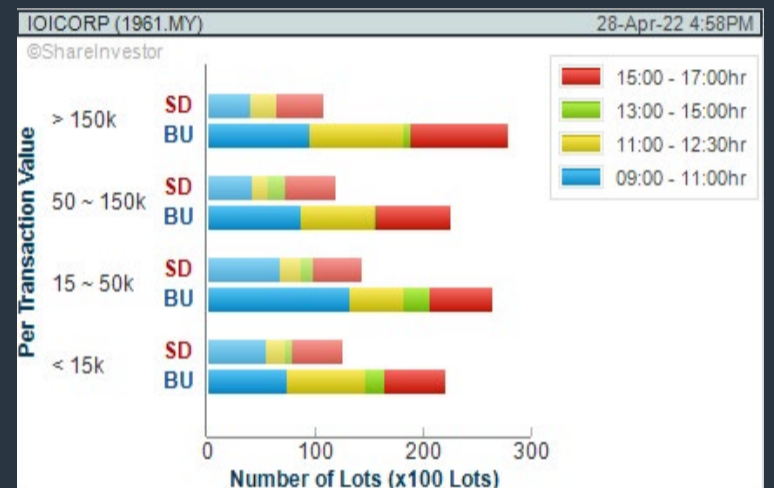
- > click Save Template > Create New Template type (Shariah Hot Stocks) > click Create
- > click Save Template as > select Shariah Hot Stocks > click Save
- > click Screen Now (may take a few minutes)
- > Sort By: Select (Vol) Select (Desc)
- > Mouse over stock name > Charts > click C² Charts or Volume Distribution

IOI CORPORATION BHD (1961)

C² Chart



Analysis

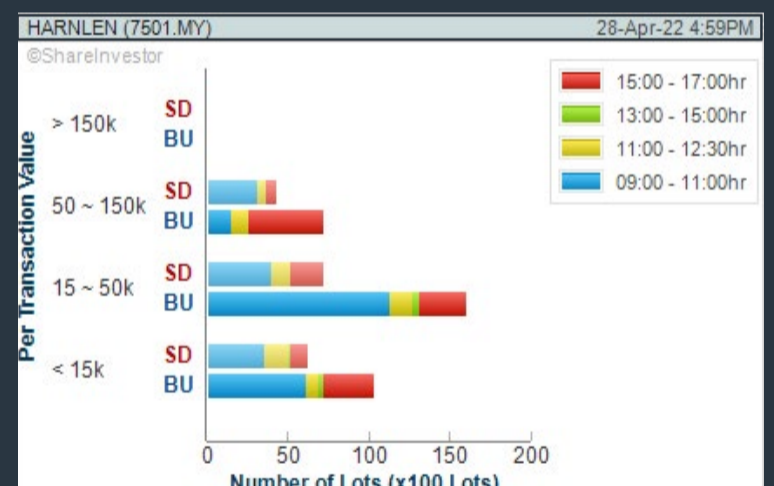


HARN LEN CORPORATION BHD (7501)

C² Chart



Analysis

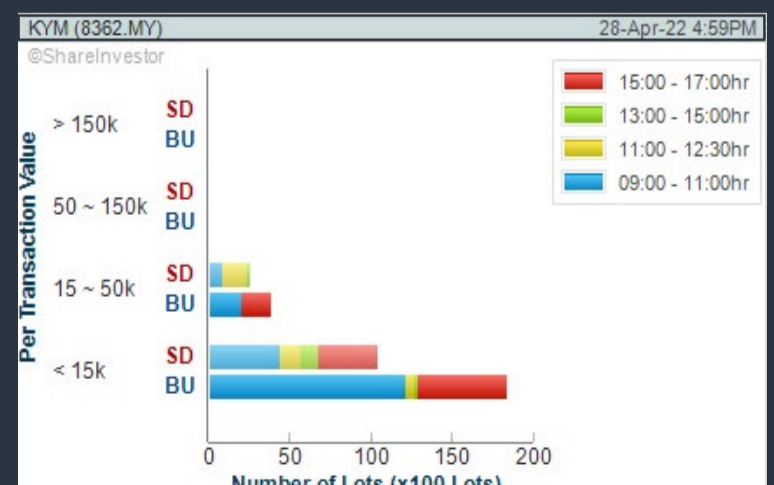


KYM HOLDINGS BHD (8362)

C² Chart



Analysis



Disclaimer: The information on this page is provided as a service to readers. It does not constitute financial advice and/or any investment recommendations. Past performance is not indicative of future results. We assume no liability for damages resulting from or arising out of the use of such information. It would be best if you did your own research to make your personal investment decisions wisely or consult a licenced investment advisor.

COMPANY BACKGROUND

IOI Corporation Berhad's principal activities are the integrated and sustainable cultivation, processing, and trading of oil palm and rubber, property development and investment and the operation of plantations. Other activities include investment holding; provision of landscape, building, maintenance, engineering, construction, golf, recreational club, hotel and hospitality services; sale of ornamental plants and turfing grass; manufacturing and distribution of industrial and medical gases and gas ancillary equipment; hotel and resort development; acting as a general contractor; operation of jetty; manufacture



of fatty acids, glycerine, soap noodles and metallic stearates; trading in esters; bulk cargo warehousing and management of collection of service charges. The products are exported worldwide marketplace.

IOICORP IOI CORPORATION BHD		Updated at 28 Apr 2022 16:58	
Last (MYR): 4.680 ↑	Change: +0.090	High: 4.710	Remarks: s ?
	Change (%): +1.96	Low: 4.650	
Open	4.680	Yesterday's Close	4.590
Buy Price	4.670	Sell Price	4.680
Buy Volume ('00)	700	Sell Volume ('00)	19,600
Cumulative Volume ('00)	172,084	Cumulative Value	80,450,879

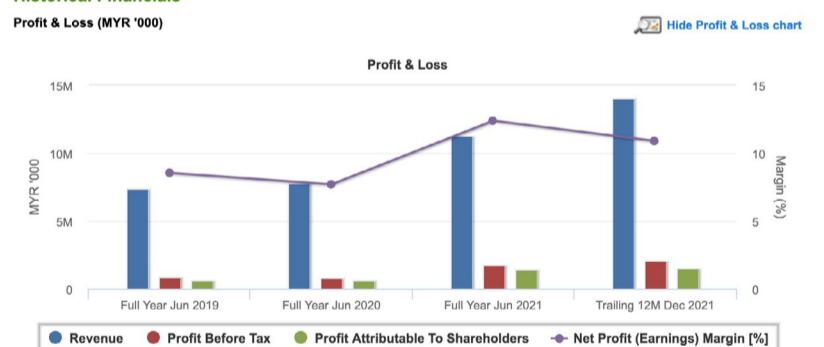
Financial Analysis

Revenue Growth Increasing revenue in last 2 consecutive years	😊	Profit Growth Increasing profit in latest year (with last 2 profitable years)	😊
Piotroski F Score The company has above average financial strength (Piotroski F-Score of 6-7)	😊	Dividend Payout Dividend is decreasing over the past 60 months.	😟
Debt to Cashflow High debt to cash flow for most recent year	😟	Gross Profit Margin Low gross profit margin for 3 years	😟

😊 Excellent 😊 Good 😐 Neutral 😟 Be Alert 😞 Watch Out



Historical Financials



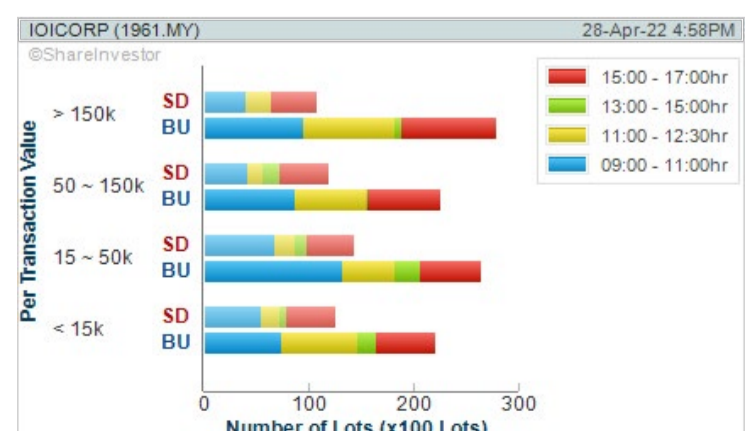
WebPro 9-Days Free Trial Registration (worth RM9) Sign Up Now



Key Statistics with Total Shareholder Returns

Total Shareholder Return

Period	Dividend Received	Capital Appreciation	Total Shareholder Return
Short Term Return	5 Days	+0.350	+8.88%
	10 Days	+0.280	+6.38%
	20 Days	+0.560	+13.59%
Medium Term Return	3 Months	+0.660	+24.74%
	6 Months	+0.660	+17.91%
	1 Year	+0.120	+18.23%
Long Term Return	2 Years	+0.205	+22.74%
	3 Years	+0.290	+18.20%
	5 Years	+0.500	+18.49%
Annualised Return	Annualised	-	+3.63%



Disclaimer: The information on this page is provided as a service to readers. It does not constitute financial advice and/or any investment recommendations. Past performance is not indicative of future results. We assume no liability for damages resulting from or arising out of the use of such information. It would be best if you did your own research to make your personal investment decisions wisely or consult a licenced investment advisor.

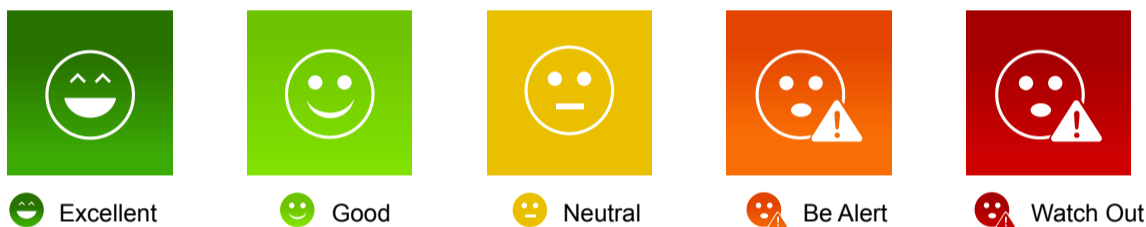
Smiley Grid

**Are you struggling to analyse financial information?
Do you find financial data overwhelming?**

Worry not, introducing our NEW feature, Smiley Grid

Smiley Grid makes the Factsheet fast and easy to understand.

It is a shortcut where key financial data have now been interpreted for you, and presented in easy-to-understand, colour coded icons.



With just a glance, you can easily identify strong or weak areas of a particular counter.

We do the analysis so you can make faster decisions.



Sign up for our 9 Days Free Trial and give it a try

9-Days FREE TRIAL WORTH (RM 9)

Price & Volume Distribution Charts (as at Yesterday)

Technical Analysis

DEFINITION: Shariah compliant stocks with Technical Analysis showing Bullish Momentum and Price Uptrend. The share price closed at the highest price yesterday. The typical price was higher than the previous day's typical price.

CHART GUIDE: Volume Distribution Chart is a statistical interpretation of the current sentiment on each stock in graphical format. The highest bar categorized as >150k is likely to be traded by institutions or super dealers, while the lowest bar categorized as <15k usually represents retail investors. "Buy Up" refers to more buyers snatching up the lots queued at selling price. "Sell Down" refers to sellers selling their shares to the buying queue.



ShareInvestor WebPro > Screener > Market Screener (FA & TA)>select BURSA>add criteria

A. Criteria

- > click Add Criteria
- Fundamental Analysis Conditions tab >select (i) Revenue
- Technical Analysis Conditions tab select (ii) Average Volume
- Prices & Other Conditions tab > select (iii) Last Done Price
- Prices & Other Conditions tab > select (iv) Is Shariah Compliant
- Technical Analysis Conditions tab select (v) RSI Overbought
- Technical Analysis Conditions tab select (vi) Moving Average Below Close
- Technical Analysis Conditions tab select (vii) CCI Overbought

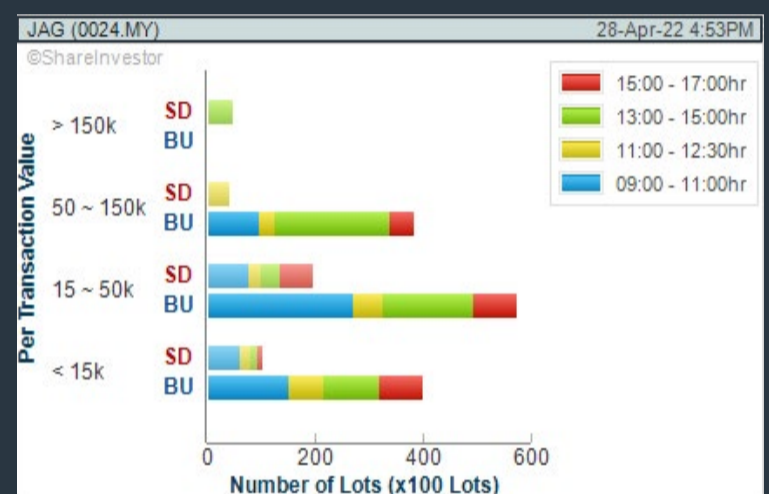
B. Conditions (Criteria Filters)

1. Revenue ("000) - select (more than) type (1) for the past select (1) financial year(s)
2. Average Volume - type (1) days average volume greater than type (10000) lots
3. Last Done Price - select (more than) type (0.3)
4. Is Shariah Compliant - select Yes
5. RSI Overbought - select RSI 1 above 99 for 1 days
6. Moving Average Below Close - select (MA) type (10) below close price for type (1) days
7. CCI Overbought - select CCI (2) above (0) for (1) days

- > click Save Template > Create New Template type (Shariah Momentum Up Stocks) > click Create
- > click Save Template as > select Shariah Momentum Up Stocks > click Save
- > click Screen Now (may take a few minutes)
- Sort By: Select (Vol) Select (Desc)
- Mouse over stock name > Charts > click C² Charts tab or Volume Distribution

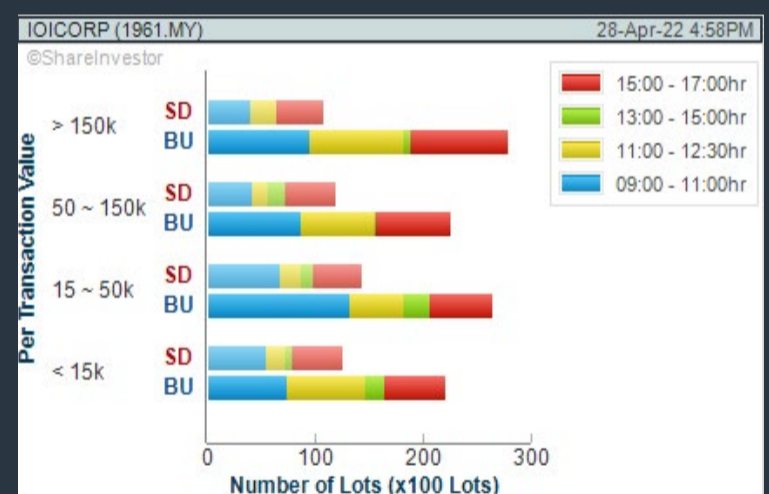
JAG BERHAD (0024)

C² Chart



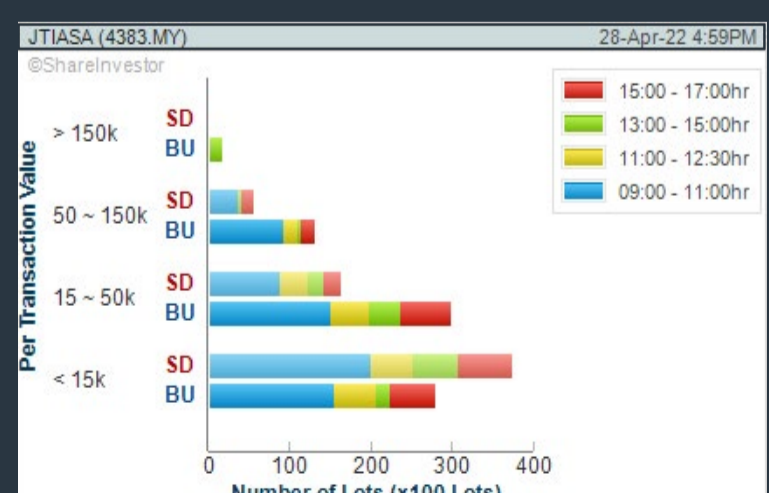
IOI CORPORATION BERHAD (1961)

C² Chart



JAYA TIASA HOLDINGS BERHAD (4383)

C² Chart

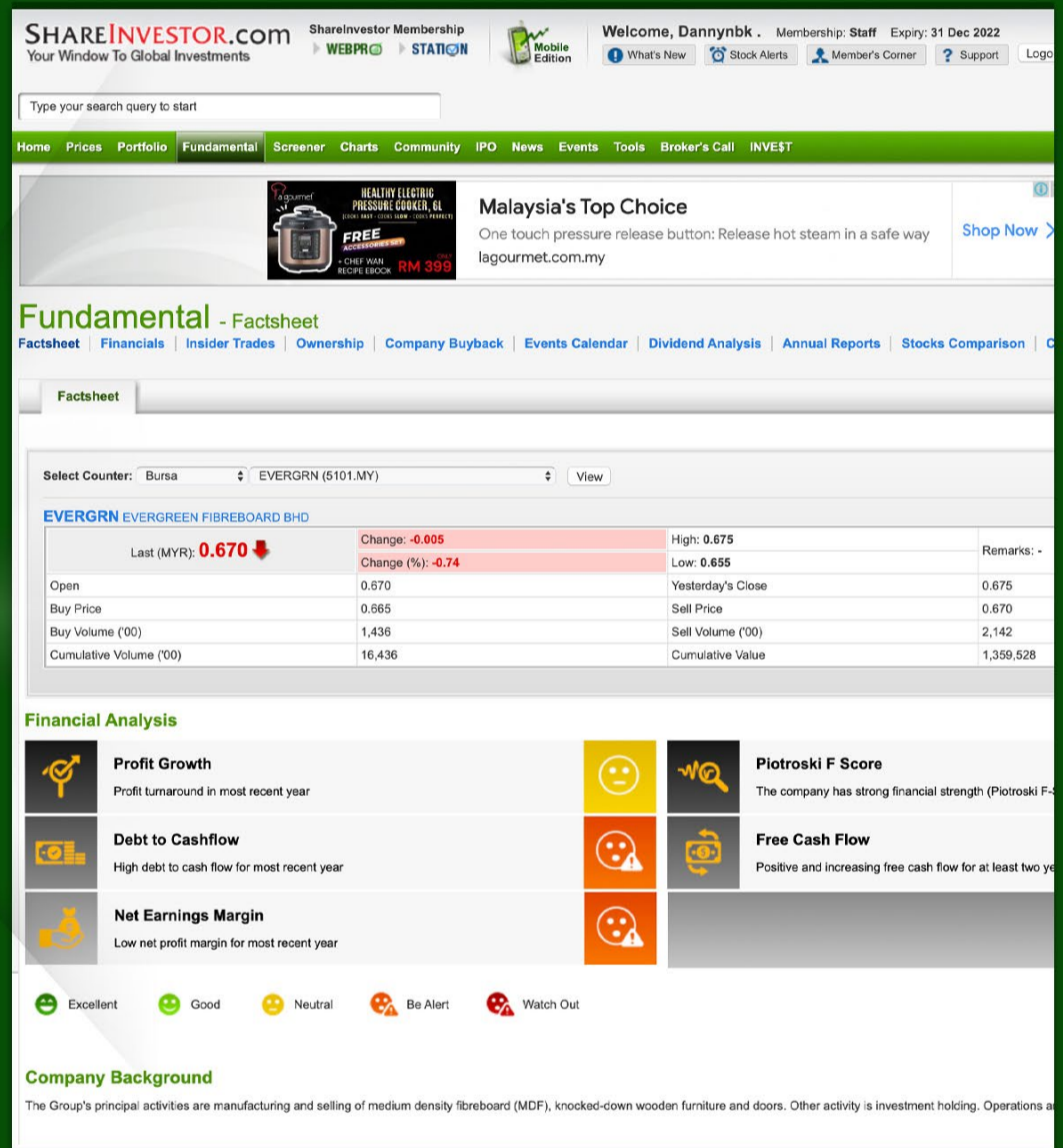
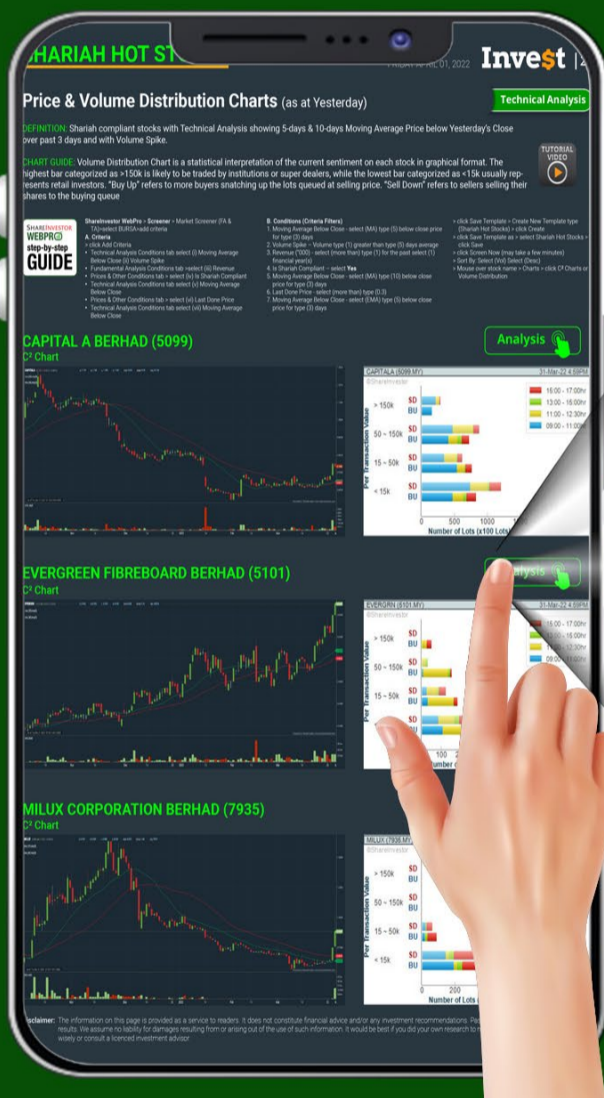


Disclaimer: The information on this page is provided as a service to readers. It does not constitute financial advice and/or any investment recommendations. Past performance is not indicative of future results. We assume no liability for damages resulting from or arising out of the use of such information. It would be best if you did your own research to make your personal investment decisions wisely or consult a licenced investment advisor.

COMPANY ANALYSIS AT YOUR FINGERTIPS

Click the Analysis buttons to access the Factsheets of any company featured on the Hot Stocks, Momentum-Up, Up-Trending, Growth and Dividend Stocks pages.

Invest with knowledge



- Company Background
- Candlestick Chart
- Current Price
- Key Statistics
- Peer Comparison
- Total Shareholder Returns
- Price Movements
- IPO performance
- Financial Reports
- Historical Price Data
- Latest News
- More



Price & Volume Distribution Charts (as at Yesterday)

Technical Analysis

DEFINITION: Stocks with Technical Analysis showing 5-days & 10-days Moving Average Price below Close over past 1 days and with Volume Spike

CHART GUIDE: Volume Distribution Chart is a statistical interpretation of the current sentiment on each stock in graphical format. The highest bar categorized as >150k is likely to be traded by institutions or super dealers, while the lowest bar categorized as <15k usually represents retail investors. "Buy Up" refers to more buyers snatching up the lots queued at selling price. "Sell Down" refers to sellers selling their shares to the buying queue.



ShareInvestor WebPro > Screener > Market Screener (FA & TA) > select BURSA > add criteria

A. Criteria

- > click Add Criteria
- Technical Analysis Conditions tab select (i) Moving Average Below Close (ii) Volume Spike
- Fundamental Analysis Conditions tab >select (iii) Revenue
- Prices & Other Conditions tab > select (iv) Is Shariah Compliant
- Technical Analysis Conditions tab select (v) Moving Average Below Close
- Prices & Other Conditions tab > select (vi) Last Done Price
- Technical Analysis Conditions tab select (vii) Moving Average Below Close

B. Conditions (Criteria Filters)

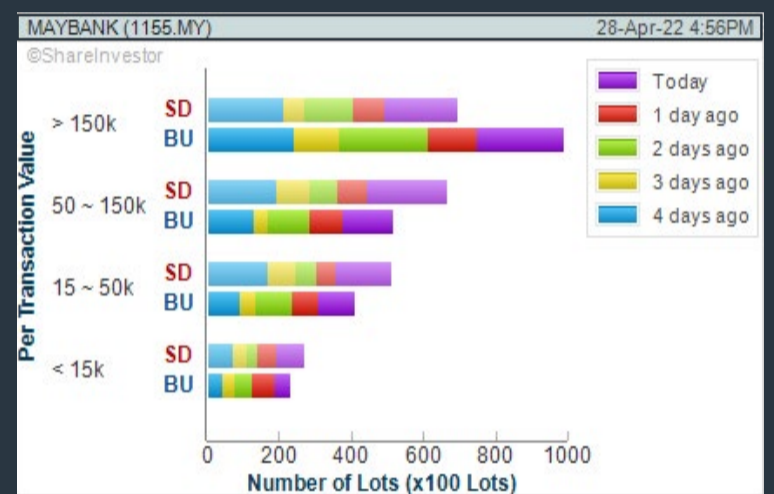
1. Moving Average Below Close - select (MA) type (5) below close price for type (3) days
2. Volume Spike - Volume type (1) greater than type (5) days average
3. Revenue ("000) - select (more than) type (1) for the past select (1) financial year(s)
4. Is Shariah Compliant - select NO
5. Moving Average Below Close - select (MA) type (10) below close price for type (1) days
6. Last Done Price - select (more than) type (0.3)
7. Moving Average Below Close - select (EMA) type (5) below close price for type (1) days

- > click Save Template > Create New Template type (Non-Shariah Hot Stocks) > click Create
- > click Save Template as > select Non-Shariah Hot Stocks > click Save
- > click Screen Now (may take a few minutes)
- Sort By: Select (Vol) Select (Desc)
- Mouse over stock name > Charts > click C² Charts tab or Volume Distribution

MALAYAN BANKING BERHAD (1155)

C² Chart

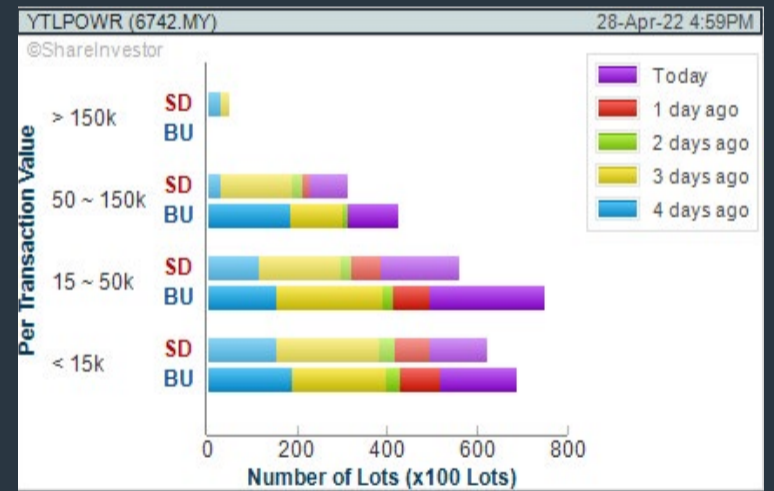
Analysis



YTL POWER INTERNATIONAL BERHAD (6742)

C² Chart

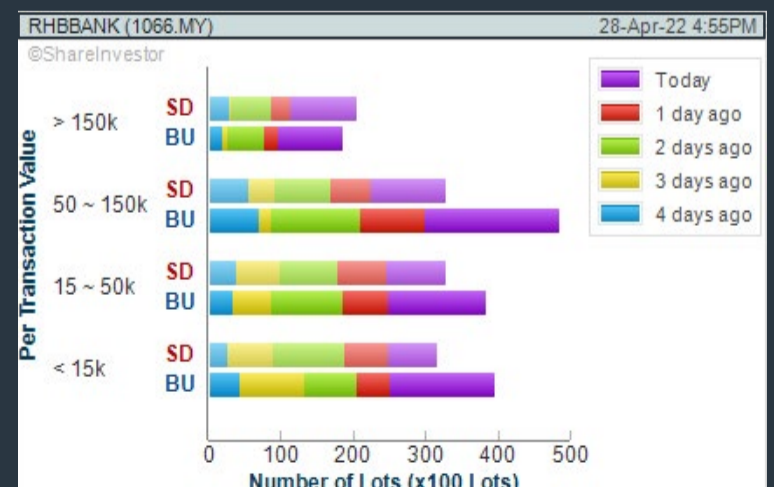
Analysis



RHB BANK BERHAD (1066)

C² Chart

Analysis



Disclaimer: The information on this page is provided as a service to readers. It does not constitute financial advice and/or any investment recommendations. Past performance is not indicative of future results. We assume no liability for damages resulting from or arising out of the use of such information. It would be best if you did your own research to make your personal investment decisions wisely or consult a licenced investment advisor.

BURSASTATION Professional



Stock Scanning

- Technical Analysis (TA) Market Scanner
- Fundamental Analysis (FA) Market Scanner



Market Data

- Equities
- Derivatives

Monitoring

- Portfolio
- Stock Alerts
- Price Spread Calculator



Scan. Chart. Analyse.

Be The Intelligent Investor



Price Movements

- Streaming Prices
- Time & Sales
- Trade Summary Matrix
- Quote Movements
- 5 Levels Market Depth
- Historical Price Download

Charts

- Intraday Charts
- Interactive Charts
- Historical Charts
- Volume Distribution Charts



Fundamentals

- Factsheets
- Financials
- Insider Trades



Brought to you as a collaborative effort by ShareInvestor and Bursa Malaysia, **BursaStation Professional** is designed with you, the user, in mind, as a user-friendly yet full of powerful features that will appeal to investors/traders who need instant access to fundamental, technical, and trading data, anytime, anywhere. **BursaStation Professional** is a state-of-the-art Stock Market Tracker with Charting Software that places in your hands the power to make better investment decisions.

[CLICK HERE TO START YOUR 14-DAYS FREE TRIAL](#)

Price & Volume Distribution Charts (Over 5 trading days as at Yesterday)

Technical Analysis

DEFINITION: Stocks with Technical Analysis showing Bullish Momentum and Price Uptrend

CHART GUIDE: Volume Distribution Chart is a statistical interpretation of the current sentiment on each stock in graphical format. The highest bar categorized as >150k is likely to be traded by institutions or super dealers, while the lowest bar categorized as <15k usually represents retail investors. "Buy Up" refers to more buyers snatching up the lots queued at selling price. "Sell Down" refers to sellers selling their shares to the buying queue.



ShareInvestor WebPro > Screener > Market Screener (FA & TA) > select BURSA > add criteria

A. Criteria

- > click Add Criteria
- Fundamental Analysis Conditions tab > select (i) Revenue
- Technical Analysis Conditions tab select (ii) Moving Average Below Close
- Technical Analysis Conditions tab select (iii) Average Volume
- Prices & Other Conditions tab > select (iv) Last Done Price
- Technical Analysis Conditions tab select (v) Moving Average Below Close
- Technical Analysis Conditions tab select (v) Moving Average Bullish Crossover

B. Conditions

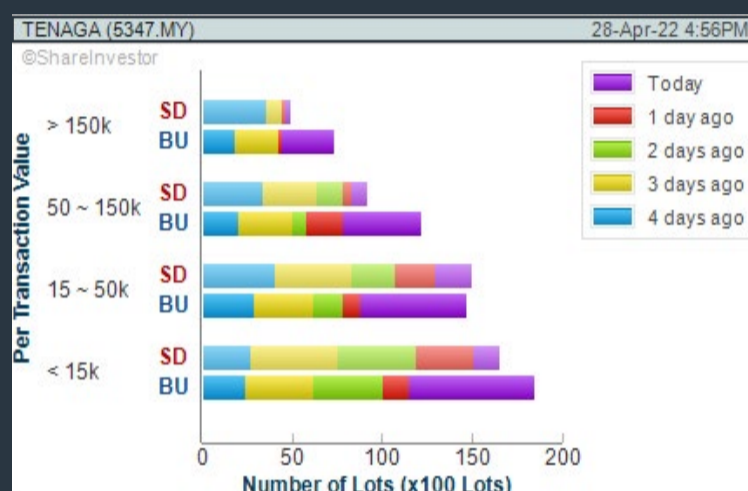
1. Revenue - select (more than) type (1) for the past select (1) financial year(s)
2. Moving Average Below Close - select (MA) type (20) below close price for type (1) days
3. Average Volume - type (5) days average volume type (10000) lots
4. Last Done Price - select (more than) type (0.3)
5. Moving Average Below Close - select (MA) type (10) below close price for type (1) days
6. Moving Average Bullish Crossover - select (MA) type (5) crossed above select (MA) type (10)

> click Save Template > Create New Template type (Non-Shariah Up-Trending Stocks) > click Create Click Save Template As > select Non-Shariah Up Trending Stocks > click Save > click Screen Now (may take a few minutes) Sort By: Select (Vol) Select (Desc) Mouse over stock name > Charts > click C² Charts tab or Volume Distribution

TENAGA NASIONAL BERHAD (5347)

C² Chart

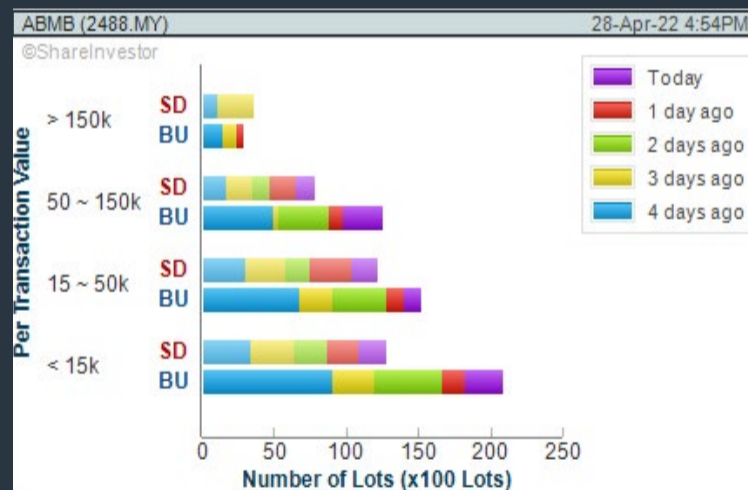
Analysis



ALLIANCE BANK MALAYSIA BERHAD (2488)

C² Chart

Analysis



Disclaimer: The information on this page is provided as a service to readers. It does not constitute financial advice and/or any investment recommendations. Past performance is not indicative of future results. We assume no liability for damages resulting from or arising out of the use of such information. It would be best if you did your own research to make your personal investment decisions wisely or consult a licenced investment advisor.



Learn how to identify Hot Stocks using Technical Analysis (TA) and Fundamental Analysis (FA)

SIGN UP FOR Invest

IT'S FREE!!!

Click here

Scan me



Via email, every Friday.

ShareInvestor is a technology based company with a focus on Internet media and we have operations in Malaysia, Singapore and Thailand.

We are the market leader in providing a combination of market data, analysis and news on various platforms to traders and investors.

Our websites include www.shareinvestor.com and www.bursastation.com.

More information about our products and services can be found at www.shareinvestorholdings.com

We're looking for Drupal Developers who will be in charge of front-end development and back-end/module development. This role requires expertise in PHP, HTML, CSS, JS, and an eye for design aesthetics. The candidates should be familiar and have a passion working with content management systems.

Interested candidates are encouraged to apply with full resume, present and expected salary and a recent photograph.

Please send these to hr.my@shareinvestor.com for processing. ShareInvestor regrets that only shortlisted candidates shall be notified.

Drupal Developers (2 vacancies)

Job Responsibilities:

- Active participation in all UI / UX decisions
- Contribute actively to the continuous development and maintenance of development projects
- Enhance Drupal development quality
- Provide solutions to issues and suggestions for improvements.
- Designing and implementing new features to the system
- Ensuring optimal performance

Required Skills:

- At least 3 years of Drupal Theming and Front-End Development experience
- Proficient in PHP, HTML5/XHTML, CSS, Javascript, jQuery, AJAX, XML, Json
- Good Diploma/Degree in Computer Science/Computer Engineering.
- Experience working with Drupal's main modules, such as CTools, Views, Rules, Webform, and so on
- Ability to create custom Drupal modules
- Strong troubleshooting skills to fix bugs

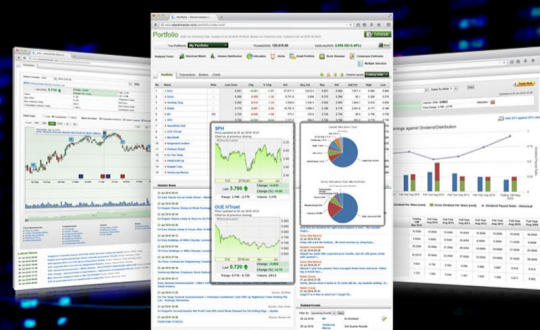
Benefits:

- Career & growth opportunities
- Interesting projects
- Medical Insurance
- Incentives

SHAREINVESTOR MARKET DATA PLATFORMS



**SHAREINVESTOR
STATION**
Advanced Charting Software
(8 Markets)



**SHAREINVESTOR
WEBPRO**
Browser-Based Market Data
Analytics Platform



BURSASTATION
Advanced Charting Software
(Bursa Malaysia Only)

ShareInvestor is a technology based company with a focus on Internet media and we have operations in Malaysia, Singapore and Thailand.

We are the market leader in providing a combination of market data, analysis and news on various platforms to traders and investors.

Our websites include www.shareinvestor.com and www.bursastation.com.

More information about our products and services can be found at www.shareinvestorholdings.com

We are looking for Developers to join our team, in a challenging, yet fun and fulfilling environment. The successful applicants will leverage on the latest Internet technologies to help create financial applications and platforms for investors, listed companies and financial institutions. Fresh graduates are welcome to apply.

Interested candidates are encouraged to apply with full resume, present and expected salary and a recent photograph.

Please send these to hr.my@shareinvestor.com for processing. ShareInvestor regrets that only shortlisted candidates shall be notified.

Ruby on Rails Developer (1 vacancy)

Responsibilities:

- Develop quality web-based software modules on schedule with a focus on Ruby and Ruby on Rails applications.
- Explore and utilize the latest web-based technologies.
- Document design specifications, logic concepts and module description.
- Maintain and enhance existing web-based applications.

Requirements:

- Experience in web-based programming/scripting is essential. Candidate must be able to explain clearly technical aspects of his/her past experiences and projects.
- Passion for programming and desire to learn new languages like Go.
- Good Diploma/Degree in Computer Science/Computer Engineering.
- Able to work well in a team and be able to follow documentation and coding standards.
- Knowledge in any of the following would be an added advantage
 - Ruby and Ruby on Rails Framework
 - Javascript and jQuery library
 - Go
 - Perl

Application Developer (C++/STL) (1 vacancy)

Responsibilities:

- Deliver quality software modules on schedule.
- Document design specifications, conceptions, module description.
- Maintain and enhance existing applications.

Requirements:

- Passion for programming and desire to learn.
- Good Diploma/Degree in Computer Science/Computer Engineering.
- Skills in C++ is essential.
- Experience with Visual Studio, networking stack and Golang would be an advantage.
- Proactive, resourceful and self-motivated with strong analytical skills.
- Good interpersonal, written and communication skills.
- Able to work with little supervision.

Price & Total Shareholder Return (as at Yesterday)

Fundamental Analysis

DEFINITION: Company revenue is growing and making good quality of earnings with positive Free Cash Flow.

CHART GUIDE: Total Shareholder Return (TSR) combines share price appreciation and distributions paid to show the total return to the shareholder expressed as a percentage.



ShareInvestor WebPro > Screener > Market Screener (FA & TA) > select BURSA > add criteria

A. Criteria

1. Fundamental Analysis Conditions tab >select (i) Free Cash Flow, (ii) Revenue Growth, (iii) Gross Profit (Earnings) Margin, (iv) Quality of Earnings, (v) Total Shareholder Returns, > click Add Criteria
2. Fundamental Analysis Conditions tab >select (vi) Total Shareholder Returns > click Add Criteria

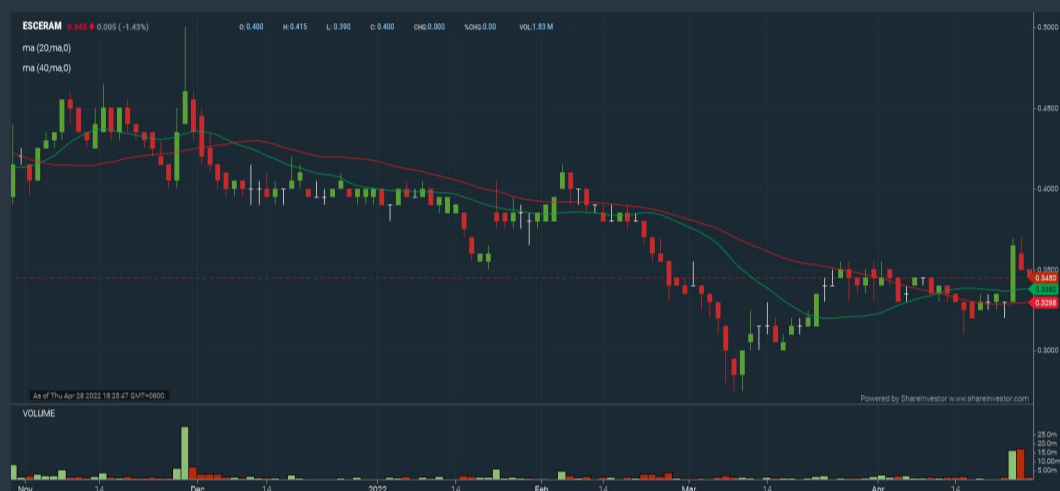
B. Conditions (Criteria Filters)

1. Free Cash Flow - select (more than) type (1) for the past select (1) financial year(s)
2. Revenue Growth - select (more than) type (1) for the past select (1) financial year(s)
3. Gross Profit (Earnings) Margin - select (more than) type (30) % for the past select (1) financial year(s)
4. Quality of Earnings - select (more than) type (1) for the past select (1) financial year(s)
5. Total Shareholder Return - select (more than) type (5) % for the past select (3) financial year(s)
6. Total Shareholder Return - select (more than) type (5) % for the past select (5) financial year(s)

- > click Save Template > Create New Template type (Growth Companies) > click Create
- > click Save Template as > select Growth Companies > click Save
- > click Screen Now (may take a few minutes)
- > Sort By: Select (Revenue Growth) Select (Desc)
- > Mouse over stock name > Factsheet > looking for Total Shareholder Return

ES CERAMICS TECHNOLOGY BERHAD (0100)

C² Chart



Period	Dividend Received	Capital Appreciation	Total Shareholder Return
Short Term Return	5 Days	-0.005	-1.49 %
	10 Days	-0.005	-1.49 %
	20 Days	-0.010	-2.94 %
Medium Term Return	3 Months	-0.030	-8.33 %
	6 Months	-0.125	-27.47 %
	1 Year	0.040	-52.26 %
Long Term Return	2 Years	0.050	+165.73 %
	3 Years	0.056	+451.43 %
	5 Years	0.068	+69.36 %
Annualised Return	Annualised	-	+11.11 %

MENANG CORPORATION (M) BERHAD (1694)

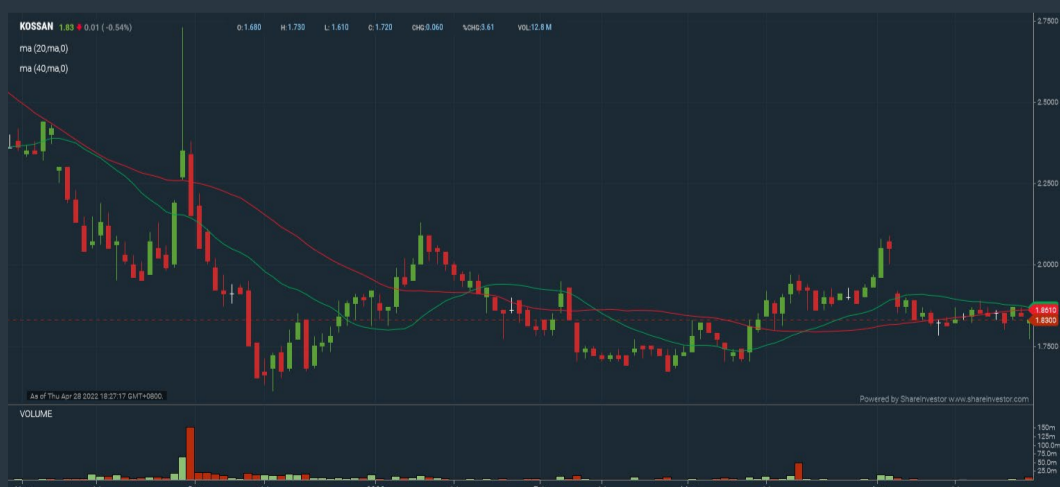
C² Chart



Period	Dividend Received	Capital Appreciation	Total Shareholder Return
Short Term Return	5 Days	-0.015	-2.46 %
	10 Days	-0.025	-4.03 %
	20 Days	-0.035	-5.56 %
Medium Term Return	3 Months	+0.100	+20.20 %
	6 Months	-0.002	-0.34 %
	1 Year	+0.128	+27.41 %
Long Term Return	2 Years	+0.338	+131.52 %
	3 Years	+0.245	+70.00 %
	5 Years	+0.131	+28.23 %
Annualised Return	Annualised	-	+5.10 %

KOSSAN RUBBER INDUSTRIES BERHAD (7153)

C² Chart



Period	Dividend Received	Capital Appreciation	Total Shareholder Return
Short Term Return	5 Days	+0.030	+1.66 %
	10 Days	-0.050	-2.65 %
	20 Days	0.120	+3.16 %
Medium Term Return	3 Months	0.120	+0.51 %
	6 Months	0.240	+11.49 %
	1 Year	0.480	+40.97 %
Long Term Return	2 Years	0.650	+5.61 %
	3 Years	0.710	+39.34 %
	5 Years	0.910	+91.77 %
Annualised Return	Annualised	-	+13.91 %

Disclaimer: The information on this page is provided as a service to readers. It does not constitute financial advice and/or any investment recommendations. Past performance is not indicative of future results. We assume no liability for damages resulting from or arising out of the use of such information. It would be best if you did your own research to make your personal investment decisions wisely or consult a licenced investment advisor.

Price & Total Shareholder Return (as at Yesterday)

Fundamental Analysis

DEFINITION: Company is paying out dividend with low or moderate leverage.

CHART GUIDE: Total Shareholder Return (TSR) combines share price appreciation and distributions paid to show the total return to the shareholder expressed as a percentage.



ShareInvestor WebPro > Screener > Market Screener (FA & TA) > select BURSA > add criteria

A. Criteria

- > click Add Criteria
- Fundamental Analysis Conditions tab >select (i) Dividend Yield (Historical)
- Fundamental Analysis Conditions tab >select (ii) Dividend Payout (Historical)
- Fundamental Analysis Conditions tab >select (iii) Total Debt To Equity
- Fundamental Analysis Conditions tab >select (iv) Total Shareholder Returns
- Fundamental Analysis Conditions tab >select (v) Total Shareholder Returns
- Fundamental Analysis Conditions tab / >select (vi) CAGR of Dividend Per Share

• Fundamental Analysis Conditions tab >select (vii) CAGR of Dividend Per Share

B. Conditions (Criteria Filters)

1. Dividend Yield - select (more than) type (1) % for the past select (1) financial year(s)
2. Dividend Payout (Historical) - select (between) type (0.5) to type (1) times for the past select (1) financial year(s)
3. Total Debt to Equity – select (less than) type (1) for the past select (1) financial year(s)
4. Total Shareholder Return – select (more than) type (5) % for the past select (3) financial year(s)
5. Total Shareholder Return – select (more than) type (5) % for the past select (5) financial year(s)

6. CAGR of Dividend Per Share – select (less than) type (30) % for the past select (5) financial year(s)
7. CAGR of Dividend Per Share – select (more than) type (1) % for the past select (5) financial year(s)

- > click Save Template > Create New Template type (Dividend Companies) > click Create
- > click Save Template as > select Dividend Companies > click Save
- > click Screen Now (may take a few minutes)
- > Sort By: Select (Dividend Yield) Select (Desc)
- > Mouse over stock name > Factsheet > looking for Total Shareholder Return

UNITED PLANTATIONS BERHAD (2089)

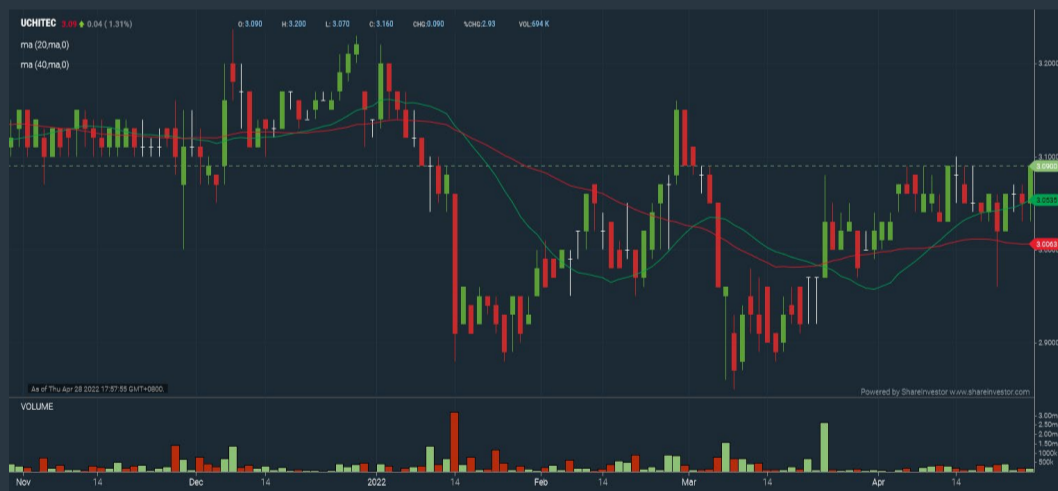
C² Chart



Period	Dividend Received	Capital Appreciation	Total Shareholder Return	
Short Term Return	5 Days	0.850	-1.280	-2.61 %
	10 Days	0.850	-1.080	-1.41 %
	20 Days	0.850	+0.180	+6.85 %
Medium Term Return	3 Months	0.850	+1.220	+14.79 %
	6 Months	1.150	+1.020	+15.28 %
	1 Year	1.150	+1.020	+15.28 %
Long Term Return	2 Years	2.000	+3.369	+45.30 %
	3 Years	3.350	+2.839	+49.09 %
	5 Years	6.250	+3.137	+77.69 %
Annualised Return	Annualised	-	-	+12.18 %

UCHI TECHNOLOGIES BERHAD (7100)

C² Chart



Period	Dividend Received	Capital Appreciation	Total Shareholder Return	
Short Term Return	5 Days	-	+0.050	+1.64 %
	10 Days	-	-	-
	20 Days	-	+0.090	+3.00 %
Medium Term Return	3 Months	-	+0.140	+4.75 %
	6 Months	0.090	-0.030	+1.92 %
	1 Year	0.185	-0.090	+2.99 %
Long Term Return	2 Years	0.345	+0.730	+45.55 %
	3 Years	0.490	+0.240	+25.61 %
	5 Years	0.890	+1.470	+145.68 %
Annualised Return	Annualised	-	-	+19.69 %

GAS MALAYSIA BERHAD (5209)

C² Chart



Period	Dividend Received	Capital Appreciation	Total Shareholder Return	
Short Term Return	5 Days	-	-0.050	-1.79 %
	10 Days	-	-0.010	-0.36 %
	20 Days	-	+0.020	+0.74 %
Medium Term Return	3 Months	0.060	+0.100	+6.06 %
	6 Months	0.060	+0.040	+3.70 %
	1 Year	0.162	+0.040	+7.48 %
Long Term Return	2 Years	0.304	-0.110	+6.81 %
	3 Years	0.445	-0.130	+10.98 %
	5 Years	0.713	-0.340	+12.11 %
Annualised Return	Annualised	-	-	+2.31 %

Disclaimer: The information on this page is provided as a service to readers. It does not constitute financial advice and/or any investment recommendations. Past performance is not indicative of future results. We assume no liability for damages resulting from or arising out of the use of such information. It would be best if you did your own research to make your personal investment decisions wisely or consult a licenced investment advisor.

DEFINITION: Top 10 stocks with Technical Analysis plus Pattern Matching by 60 pre-defined indicators by the system showing a higher probability of bullish sentiment on the share price.



ShareInvestor WebPro > Screener > Predefined TA Screens > select market BURSA > Most Long Signals > click Scan Results or mouse over each company

DESTINI BERHAD (7212.MY)

DESTINI

Price updated at 28 Apr 2022 16:58

Last: 0.185	Change: -	Volume: 35,942
	Change (%): -	Range: 0.180 - 0.190

TA Scanner Results based on historical data up to 28 Apr 2022

Condition	Signal	Explanation
Bollinger Band: Bullish Long Term Volatility Breakout and Trending	Long	1. Close price above upper bollinger band(33,1). 2. Volume above average volume(50). 3. Average volume(50) is above 300,000.
Bollinger Band: Bullish Short Term Volatility Breakout and Trending	Long	1. Close price above upper bollinger band(33,1). 2. Volume above average volume(10). 3. Average volume(10) is above 300,000.
DM: Bullish Directional Movement	Long	-DI(14) crossed below +DI(14)
MA: Bullish Price Crossover	Long	1. Close price crossed above MA(40) within the last 1 day. 2. Previous day close price is below the MA(10) for the last 5 days
MA: Medium Term Bullish Moving Average Crossover	Long	MA(25) crossed above MA(50) within the last 1 day.
MACD: Bullish MACD Crossover	Long	1. MACD(12,26) diff line crossed above the MACD(12,26) signal line. 2. MACD Histogram(12,26) is above 0.
RSI: Short Term RSI 50 Bullish Crossover	Long	1. RSI(20) crossed above 50 within the last 1 day and RSI(20) 1 day ago below 50 for the last 5 days. 2. Volume above average volume(125). 3. Average volume(5) is above 100,000.
Stochastic: Fast Stochastic Buy Signal	Long	1. Fast Stochastic(15,5) %K crossed above 20. 2. Fast Stochastic(15,5) %K 1 day ago was below 20 for the last 5 days. 3. Average volume(30) is above 50000

IREKA CORPORATION BERHAD (8834.MY)

IREKA

Price updated at 28 Apr 2022 16:59

Last: 0.475	Change: -	Volume: 4,852
	Change (%): -	Range: 0.470 - 0.485

TA Scanner Results based on historical data up to 28 Apr 2022

Condition	Signal	Explanation
Candlestick: Indecision Doji	Neutral	Indecision: Doji
Volume: 10 Days large value Buy Up trade	Long	1. 150K value Buy Up greater than Sell Down by 20% for 10 days. 2. 50K-100K value Buy Up greater than Sell Down by 20% for 10 days. 3. Average volume(10) is above 1000000
Volume: 5 Days large value Buy Up trade	Long	1. 150K value Buy Up greater than Sell Down by 20% for 5 days. 2. 50K-100K value Buy Up greater than Sell Down by 20% for 5 days. 3. Average volume(10) is above 1000000
Volume: Consecutive Days Of Increasing Average Volume	Long	1. Average Volume(20) has been increasing over the last 2 weeks. 2. Average volume(20) is above 100000
Williams %R: Bullish Williams %R	Long	1. Williams %R(26) between -80 and -100. 2. Average volume(5) is above 100,000.

Disclaimer: The information on this page is provided as a service to readers. It does not constitute financial advice and/or any investment recommendations. Past performance is not indicative of future results. We assume no liability for damages resulting from or arising out of the use of such information. It would be best if you did your own research to make your personal investment decisions wisely or consult a licenced investment advisor.

PEKAT GROUP BERHAD (0233.MY)

PEKAT

Price updated at 28 Apr 2022 16:58

Last: 0.640	Change: -0.010	Volume: 68,202
	Change (%): -1.54	Range: 0.640 - 0.655

TA Scanner Results based on historical data up to 28 Apr 2022

Condition	Signal	Explanation
Stochastic: Fast Stochastic Buy Signal	Long	1. Fast Stochastic(15,5) %K crossed above 20. 2. Fast Stochastic(15,5) %K 1 day ago was below 20 for the last 5 days. 3. Average volume(30) is above 50000
Volume: 10 Days large value Buy Up trade	Long	1. 150K value Buy Up greater than Sell Down by 20% for 10 days. 2. 50K-100K value Buy Up greater than Sell Down by 20% for 10 days. 3. Average volume(10) is above 1000000
Volume: 5 Days large value Buy Up trade	Long	1. 150K value Buy Up greater than Sell Down by 20% for 5 days. 2. 50K-100K value Buy Up greater than Sell Down by 20% for 5 days. 3. Average volume(10) is above 1000000
Volume: Consecutive Days Of Increasing Average Volume	Long	1. Average Volume(20) has been increasing over the last 2 weeks. 2. Average volume(20) is above 100000

SOLARVEST HOLDINGS BERHAD (0215.MY)

SLVEST

Price updated at 28 Apr 2022 16:59

Last: 0.855	Change: +0.040	Volume: 27,177
	Change (%): +4.91	Range: 0.815 - 0.855

TA Scanner Results based on historical data up to 28 Apr 2022

Condition	Signal	Explanation
Candlestick: Bullish Hammer	Long	Bullish: Hammer
MA: Medium Term Bullish Moving Average Crossover	Long	MA(25) crossed above MA(50) within the last 1 day.
Volume: 10 Days large value Buy Up trade	Long	1. 150K value Buy Up greater than Sell Down by 20% for 10 days. 2. 50K-100K value Buy Up greater than Sell Down by 20% for 10 days. 3. Average volume(10) is above 1000000
Williams %R: Bullish Williams %R	Long	1. Williams %R(26) between -80 and -100. 2. Average volume(5) is above 100,000.

PGF CAPITAL BERHAD (8117.MY)

PGF

Price updated at 28 Apr 2022 16:30

Last: 0.845	Change: +0.005	Volume: 2,298
	Change (%): +0.60	Range: 0.840 - 0.860

TA Scanner Results based on historical data up to 28 Apr 2022

Condition	Signal	Explanation
MA: Short Term Bullish Moving Average Crossover	Long	MA(10) crossed above MA(15) within the last 1 day.
MACD: Bullish MACD Crossover	Long	1. MACD(12,26) diff line crossed above the MACD(12,26) signal line. 2. MACD Histogram(12,26) is above 0.
Parabolic SAR: Bearish Parabolic SAR Reversal	Neutral	1. Parabolic SAR 1 day ago above close price 1 day ago for the last 5 days. 2. Parabolic SAR below close price
Volume: Volume Spike	Long	1. Volume is more than 500% above average volume(10). 2. Volume above 200000. 3. Close price above 0.10



NESTCON BERHAD (0235.MY)

NESTCON

Price updated at 28 Apr 2022 16:59

Last: 0.495	Change: -	Volume: 78,885
	Change (%): -	Range: 0.495 - 0.505

TA Scanner Results based on historical data up to 28 Apr 2022

Condition	Signal	Explanation
Bollinger Band: Low Below Lower Bollinger Band	Neutral	1. Low below lower bollinger band(20,2). 2. Average volume(5) is above 100,000.
CCI: Bullish CCI Oversold And Reversing	Long	1. CCI(26) below -100 and CCI(26) 1 day ago decreasing for the last 3 days. 2. CCI(26) above CCI(26) 1 day ago
DM: Bearish Directional Movement	Short	-DI(14) crossed above +DI(14)
Volume: 10 Days large value Buy Up trade	Long	1. 150K value Buy Up greater than Sell Down by 20% for 10 days. 2. 50K-100K value Buy Up greater than Sell Down by 20% for 10 days. 3. Average volume(10) is above 1000000
Volume: 5 Days large value Buy Up trade	Long	1. 150K value Buy Up greater than Sell Down by 20% for 5 days. 2. 50K-100K value Buy Up greater than Sell Down by 20% for 5 days. 3. Average volume(10) is above 1000000
Williams %R: Bullish Williams %R	Long	1. Williams %R(26) between -80 and -100. 2. Average volume(5) is above 100,000.



CHEETAH HOLDINGS BERHAD (7209.MY)

CHEETAH

Price updated at 28 Apr 2022 16:56

Last: 0.205	Change: -	Volume: 255,253
	Change (%): -	Range: 0.195 - 0.215

TA Scanner Results based on historical data up to 28 Apr 2022

Condition	Signal	Explanation
Bollinger Band: Bullish Long Term Volatility Breakout and Trending	Long	1. Close price above upper bollinger band(33,1). 2. Volume above average volume(50). 3. Average volume(50) is above 300,000.
Bollinger Band: Bullish Short Term Volatility Breakout and Trending	Long	1. Close price above upper bollinger band(33,1). 2. Volume above average volume(10). 3. Average volume(10) is above 300,000.
Bollinger Band: High Above Upper Bollinger Band	Neutral	1. High above upper bollinger band(20,2). 2. Average volume(5) is above 100,000.
Candlestick: Bullish Engulfing	Long	Bullish: Engulfing
MA: Short Term Bullish Moving Average Crossover	Long	MA(10) crossed above MA(15) within the last 1 day.
Williams %R: Bearish Williams %R	Short	1. Williams %R(26) between 0 and -20. 2. Average volume(5) is above 100,000.



AMLEX HOLDINGS BERHAD (03011.MY)

AMLEX

Price updated at 28 Apr 2022 16:06

Last: 0.390	Change: -	Volume: 760
	Change (%): -	Range: 0.390 - 0.390

TA Scanner Results based on historical data up to 28 Apr 2022

Condition	Signal	Explanation
Donchian Channels: High Above Upper Donchian Channels	Long	High crossed above the upper Donchian Channel(14,4)
Historical Volatility: Increasing Historical Volatility	Neutral	Historical Volatility(100,365) increasing for the last 10 days
MA: Medium Term Bullish Moving Average Crossover	Long	MA(25) crossed above MA(50) within the last 1 day.
MA: Short Term Bearish Moving Average Crossover	Short	MA(10) crossed below MA(15) within the last 1 day.
MACD: Bullish MACD Crossover	Long	1. MACD(12,26) diff line crossed above the MACD(12,26) signal line. 2. MACD Histogram(12,26) is above 0.



MYCRON STEEL BERHAD (5087.MY)

MYCRON

Price updated at 28 Apr 2022 16:58

Last: 0.700	Change: -	Volume: 52,032
	Change (%): -	Range: 0.690 - 0.725

TA Scanner Results based on historical data up to 28 Apr 2022

Condition	Signal	Explanation
Candlestick: Bullish Engulfing	Long	Bullish: Engulfing
Chaikin Volatility: Decreasing Chaikin Volatility	Neutral	Chaikin Volatility(10,10) has been decreasing for 5 days
Volume: 10 Days large value Buy Up trade	Long	1. 150K value Buy Up greater than Sell Down by 20% for 10 days. 2. 50K-100K value Buy Up greater than Sell Down by 20% for 10 days. 3. Average volume(10) is above 1000000
Volume: Consecutive Days Of Increasing Average Volume	Long	1. Average Volume(20) has been increasing over the last 2 weeks. 2. Average volume(20) is above 100000
Williams %R: Bearish Williams %R	Short	1. Williams %R(26) between 0 and -20. 2. Average volume(5) is above 100,000.



ONLY WORLD GROUP HOLDINGS BERHAD (5260.MY)

OWG

Price updated at 28 Apr 2022 16:55

Last: 0.650	Change: -0.010	Volume: 18,467
	Change (%): -1.52	Range: 0.640 - 0.660

TA Scanner Results based on historical data up to 28 Apr 2022

Condition	Signal	Explanation
Bollinger Band: High Above Upper Bollinger Band	Neutral	1. High above upper bollinger band(20,2). 2. Average volume(5) is above 100,000.
MA: Short Term Bearish Moving Average Crossover	Short	MA(10) crossed below MA(15) within the last 1 day.
MACD: Bullish MACD Crossover	Long	1. MACD(12,26) diff line crossed above the MACD(12,26) signal line. 2. MACD Histogram(12,26) is above 0.
Price: New 52 Week High	Long	1. Stock reach a new 52 week high. 2. Average volume(30) is above 50000.
Volume: 10 Days large value Buy Up trade	Long	1. 150K value Buy Up greater than Sell Down by 20% for 10 days. 2. 50K-100K value Buy Up greater than Sell Down by 20% for 10 days. 3. Average volume(10) is above 1000000
Volume: 5 Days large value Buy Up trade	Long	1. 150K value Buy Up greater than Sell Down by 20% for 5 days. 2. 50K-100K value Buy Up greater than Sell Down by 20% for 5 days. 3. Average volume(10) is above 1000000
Williams %R: Bearish Williams %R	Short	1. Williams %R(26) between 0 and -20. 2. Average volume(5) is above 100,000.

Disclaimer: The information on this page is provided as a service to readers. It does not constitute financial advice and/or any investment recommendations. Past performance is not indicative of future results. We assume no liability for damages resulting from or arising out of the use of such information. It would be best if you did your own research to make your personal investment decisions wisely or consult a licenced investment advisor.

Week: 15 - 21 April 2022

More Brokers' Call 

BIMB SECURITIES SDN BHD ... See More	Call	Target Price	Release Date
Nestle (Malaysia) Berhad (4707)	BUY	RM152.50	27 Apr 2022
Kossan Rubber Industries Berhad (7153)	BUY	RM1.80	28 Apr 2022

CGS CIMB ... See More	Call	Target Price	Release Date
SKP Resources Bhd (7155)	ADD	RM2.35	25 Apr 2022
Fraser & Neave Holdings Bhd (3689)	ADD	RM29.80	26 Apr 2022

KENANGA ... See More	Call	Target Price	Release Date
CTOS Digital Berhad (5301)	OUTPERFORM	RM2.00	25 Apr 2022
Uzma Berhad (7250)	OUTPERFORM	RM0.68	26 Apr 2022
Kelington Group Berhad (0151)	OUTPERFORM	RM1.90	27 Apr 2022
Unisem (M) Berhad (5005)	OUTPERFORM	RM3.75	28 Apr 2022

MALACCA SECURITIES SDN BHD ... See More	Call	Target Price	Release Date
Kelington Group Berhad (0151)	BUY	RM2.10	27 Apr 2022

MIDF ... See More	Call	Target Price	Release Date
Petronas Chemicals Group Berhad (5183)	BUY	RM11.10	22 Apr 2022
Fraser & Neave Holdings Bhd (3689)	BUY	RM30.03	26 Apr 2022
Westports Holdings Berhad (5246)	BUY	RM4.45	27 Apr 2022
Pintaras Jaya Bhd (9598)	BUY	RM 3.14	28 Apr 2022

UOB KAYHIAN ... See More	Call	Target Price	Release Date
Globetronics Technology Berhad (7022)	BUY	RM2.00	22 Apr 2022
V.S. Industry berhad (6963)	BUY	RM1.27	25 Apr 2022
Golden Land Berhad (7382)	BUY	RM0.66	26 Apr 2022
Press Metal Aluminium Holdings Berhad (8869)	BUY	RM7.50	27 Apr 2022

Disclaimer: InveSt does not accept any liability whatsoever for any direct, indirect or consequential losses (including loss of profit) or damages that may arise from the use of information or opinions in this publication. The information and opinions in InveSt are not to be considered as an offer to sell or buy any of the securities discussed. Opinions expressed are subject to change without notice. The Brokers may, from time to time, have interests or positions in the securities mentioned. For the full report on each item listed on this page, please visit https://www.shareinvestor.com/my/brokers_call.

DEFINITION: Insider Activity shows the trades made by substantial shareholders or directors of the company. Purchases by the directors and company share buyback may indicate the share price is undervalued and brings confidence to the price trend of the share price.



ShareInvestor WebPro > Fundamental > Insider Trades > click Search tab > Select Bursa > click Stock name > scroll up and leave at <Select Counter> Type Date Range for Announcement Date > click Search

Notice Period is 17 April 2022 - 23 April 2022

Effective Change Date	Stock Name	Buyer/ Seller Name [Classification]	Bought / (Sold) ['000]		No. of Shares After Trade ['000]	
			Total	Total	% Held	
20 Apr 2022 - 21 Apr 2022	3A	MR TEO KWEE HOCK [SSH]	78	47,503	9.69	
15 Apr 2022 - 15 Apr 2022	ABMB	EMPLOYEES PROVIDENT FUND BOARD [SSH]	-163	186,931	12.075	
14 Apr 2022 - 14 Apr 2022	ABMB	EMPLOYEES PROVIDENT FUND BOARD [SSH]	-310	187,094	12.085	
13 Apr 2022 - 13 Apr 2022	ABMB	EMPLOYEES PROVIDENT FUND BOARD [SSH]	-457	187,404	12.105	
14 Apr 2022 - 14 Apr 2022	ADVCON	MR PHAM SOON KOK [SSH]	-1,307	27,293	5.65	
18 Apr 2022 - 18 Apr 2022	AEON	EMPLOYEES PROVIDENT FUND BOARD [SSH]	-410	149,050	10.616	
15 Apr 2022 - 15 Apr 2022	AEON	EMPLOYEES PROVIDENT FUND BOARD [SSH]	-147	149,460	10.645	
14 Apr 2022 - 14 Apr 2022	AEON	EMPLOYEES PROVIDENT FUND BOARD [SSH]	-405	149,607	10.656	
13 Apr 2022 - 13 Apr 2022	AEON	EMPLOYEES PROVIDENT FUND BOARD [SSH]	-770	150,013	10.685	
13 Apr 2022 - 13 Apr 2022	AIRPORT	EMPLOYEES PROVIDENT FUND BOARD [SSH]	-12	253,075	15.253	
15 Apr 2022 - 15 Apr 2022	ALLIANZ	EMPLOYEES PROVIDENT FUND BOARD [SSH]	12	11,899	6.686	
14 Apr 2022 - 14 Apr 2022	ALLIANZ	EMPLOYEES PROVIDENT FUND BOARD [SSH]	15	11,887	6.679	
13 Apr 2022 - 13 Apr 2022	ALLIANZ	EMPLOYEES PROVIDENT FUND BOARD [SSH]	5	11,871	6.671	
18 Apr 2022 - 18 Apr 2022	AMBANK	EMPLOYEES PROVIDENT FUND BOARD [SSH]	500	319,015	9.636	
15 Apr 2022 - 15 Apr 2022	AMBANK	EMPLOYEES PROVIDENT FUND BOARD [SSH]	107	318,515	9.62	
15 Apr 2022 - 15 Apr 2022	ANCOMNY	MR LEE CHEUN WEI [SSH]	20	16,654	5.76	
15 Apr 2022 - 15 Apr 2022	ANCOMNY	MR LEE CHEUN WEI [DIR/CEO]	20	16,654	5.76	
22 Apr 2022 - 22 Apr 2022	ASIAPLY	MR LIM TECK SENG [DIR/CEO]	450	1,500	0.172	
18 Apr 2022 - 18 Apr 2022	AXREIT	EMPLOYEES PROVIDENT FUND BOARD [SSH]	-500	269,806	16.507	
15 Apr 2022 - 15 Apr 2022	AXREIT	EMPLOYEES PROVIDENT FUND BOARD [SSH]	-167	270,306	16.537	
14 Apr 2022 - 14 Apr 2022	AXREIT	EMPLOYEES PROVIDENT FUND BOARD [SSH]	-17	270,473	16.548	
13 Apr 2022 - 13 Apr 2022	AXREIT	EMPLOYEES PROVIDENT FUND BOARD [SSH]	-146	270,490	16.549	
15 Apr 2022 - 15 Apr 2022	BAUTO	PRUDENTIAL PLC [SSH]	298	60,149	5.175	
21 Apr 2022 - 22 Apr 2022	BESHOM	MR TAN KIM SIONG [DIR/CEO]	5	71	0.024	
20 Apr 2022 - 21 Apr 2022	BESHOM	MADAM TAN KENG SONG [SSH]	80	78,327	26.1	
20 Apr 2022 - 21 Apr 2022	BESHOM	MR TAN KENG KANG [SSH]	80	77,563	25.846	
20 Apr 2022 - 21 Apr 2022	BESHOM	MADAM PHAN VAN DENH [SSH]	80	77,563	25.846	
20 Apr 2022 - 21 Apr 2022	BESHOM	MR TAN KENG KANG [DIR/CEO]	80	77,563	25.846	
20 Apr 2022 - 21 Apr 2022	BESHOM	AKINTAN SDN BHD [SSH]	80	24,476	8.156	
18 Apr 2022 - 18 Apr 2022	BIMB	EMPLOYEES PROVIDENT FUND BOARD [SSH]	500	289,994	13.455	
15 Apr 2022 - 15 Apr 2022	BIMB	EMPLOYEES PROVIDENT FUND BOARD [SSH]	224	289,494	13.432	
13 Apr 2022 - 13 Apr 2022	BIMB	EMPLOYEES PROVIDENT FUND BOARD [SSH]	982	289,269	13.421	
18 Apr 2022 - 18 Apr 2022	BJCORP	TAN SRI DATO' SERI VINCENT TAN CHEE YIUON [SSH]	8,593	2,133,735	41.784	
14 Apr 2022 - 14 Apr 2022	BJCORP	TAN SRI DATO' SERI VINCENT TAN CHEE YIUON [DIR/CEO]	8,593	2,148,684	42.077	
20 Apr 2022 - 20 Apr 2022	BJCORP-LD	TAN SRI DATO' SERI VINCENT TAN CHEE YIUON [DIR/CEO]	4,295	161,400	37.073	
20 Apr 2022 - 20 Apr 2022	BJCORP-WB	TAN SRI DATO' SERI VINCENT TAN CHEE YIUON [DIR/CEO]	19,351	337,652	48.23	
18 Apr 2022 - 20 Apr 2022	BOILERM	DR CHIA SONG KUN [DIR/CEO]	85	269,068	52.15	
18 Apr 2022 - 20 Apr 2022	BOILERM	DR CHIA SONG KUN [SSH]	85	269,068	52.15	
18 Apr 2022 - 20 Apr 2022	BOILERM	QL GREEN RESOURCES SDN. BHD. [SSH]	85	268,668	52.07	
18 Apr 2022 - 20 Apr 2022	BOILERM	CBG (L) FOUNDATION [SSH]	85	268,668	52.07	
18 Apr 2022 - 20 Apr 2022	BOILERM	QL RESOURCES BERHAD [SSH]	85	268,668	52.07	
18 Apr 2022 - 20 Apr 2022	BOILERM	CBG (L) PTE LTD [SSH]	85	268,668	52.07	
20 Apr 2022 - 21 Apr 2022	BPLANT	LEMBAGA TABUNG ANGKATAN TENTERA [SSH]	-3,286	252,729	11.28	
13 Apr 2022 - 13 Apr 2022	BSTEAD	LEMBAGA TABUNG ANGKATAN TENTERA [SSH]	-135	1,204,612	59.429	
14 Apr 2022 - 14 Apr 2022	BURSA	EMPLOYEES PROVIDENT FUND BOARD [SSH]	231	74,585	9.216	
15 Apr 2022 - 15 Apr 2022	CCB	JARDINE CYCLE & CARRIAGE LIMITED [SSH]	0.8	90,149	89.483	
15 Apr 2022 - 15 Apr 2022	CCB	JARDINE STRATEGIC SINGAPORE PTE LTD [SSH]	0.8	90,149	89.483	
15 Apr 2022 - 15 Apr 2022	CCB	JARDINE STRATEGIC LIMITED [SSH]	0.8	90,149	89.483	
15 Apr 2022 - 15 Apr 2022	CCB	JSH ASIAN HOLDINGS LIMITED [SSH]	0.8	90,149	89.483	
15 Apr 2022 - 15 Apr 2022	CCB	JMH INVESTMENTS LIMITED [SSH]	0.8	90,149	89.483	
15 Apr 2022 - 15 Apr 2022	CCB	JARDINE MATHESON HOLDINGS LIMITED [SSH]	0.8	90,149	89.483	
18 Apr 2022 - 18 Apr 2022	CGB	MR LEE CHEE VUI [DIR/CEO]	14,471	14,471	12.44	
14 Apr 2022 - 14 Apr 2022	CIMB	KUMPULAN WANG PERSARAAN (DIPERBADANKAN) [SSH]	1,487	679,156	6.64	
13 Apr 2022 - 13 Apr 2022	CIMB	EMPLOYEES PROVIDENT FUND BOARD [SSH]	-2,540	1,605,241	15.7	
13 Apr 2022 - 13 Apr 2022	CIMB	KUMPULAN WANG PERSARAAN (DIPERBADANKAN) [SSH]	-315	677,669	6.63	
12 Apr 2022 - 12 Apr 2022	CIMB	EMPLOYEES PROVIDENT FUND BOARD [SSH]	-172	1,607,781	15.73	
11 Apr 2022 - 11 Apr 2022	CIMB	EMPLOYEES PROVIDENT FUND BOARD [SSH]	701	1,607,954	15.73	
21 Apr 2022 - 21 Apr 2022	CRG	DATO' SRI CHIANG FONG YEE [DIR/CEO]	35	259,546	32.215	
21 Apr 2022 - 21 Apr 2022	CRG	DATO' SRI CHIANG FONG YEE [SSH]	35	185,906	23.075	
18 Apr 2022 - 20 Apr 2022	CRG	DATO' SRI CHIANG FONG YEE [DIR/CEO]	5,097	259,511	32.211	
18 Apr 2022 - 20 Apr 2022	CRG	DATO' SRI CHIANG FONG YEE [SSH]	5,097	185,871	23.071	
15 Apr 2022 - 15 Apr 2022	CRG	DATO' SRI CHIANG FONG YEE [DIR/CEO]	5	254,414	31.578	
15 Apr 2022 - 15 Apr 2022	CRG	DATO' SRI CHIANG FONG YEE [SSH]	5	180,774	22.438	
18 Apr 2022 - 18 Apr 2022	CTOS	EMPLOYEES PROVIDENT FUND BOARD [SSH]	100	145,129	6.283	
14 Apr 2022 - 14 Apr 2022	CTOS	EMPLOYEES PROVIDENT FUND BOARD [SSH]	100	145,029	6.278	
13 Apr 2022 - 13 Apr 2022	CTOS	EMPLOYEES PROVIDENT FUND BOARD [SSH]	509	144,929	6.274	
13 Apr 2022 - 13 Apr 2022	CWG	MR LOH SEONG YEW [DIR/CEO]	50	150	0.092	
18 Apr 2022 - 18 Apr 2022	D&O	MR WONG MENG TAK [DIR/CEO]	-40	1,483	0.12	
20 Apr 2022 - 20 Apr 2022	DANCO-WA	MR AIK SWEE TONG [DIR/CEO]	-2,500	5,566	12.164	

Notice Period is 17 April 2022 - 23 April 2022

Effective Change Date	Stock Name	Buyer/ Seller Name [Classification]	Bought / (Sold) ['000]		No. of Shares After Trade ['000]	
			Total	Total	% Held	
21 Apr 2022 - 21 Apr 2022	DBHD	JOHOR CORPORATION [SSH]	23	271,187	82.988	
21 Apr 2022 - 21 Apr 2022	DBHD	JLAND GROUP SDN. BHD (FORMERLY KNOWN AS ABSOLUTE AMBIENT SDN. BHD.) [SSH]	23	227,222	69.534	
20 Apr 2022 - 20 Apr 2022	DBHD	JOHOR CORPORATION [SSH]	39	271,164	82.981	
20 Apr 2022 - 20 Apr 2022	DBHD	JLAND GROUP SDN. BHD. (FORMERLY KNOWN AS ABSOLUTE AMBIENT SDN. BHD.) [SSH]	39	227,199	69.527	
18 Apr 2022 - 18 Apr 2022	DBHD	JOHOR CORPORATION [SSH]	106	271,125	82.969	
18 Apr 2022 - 18 Apr 2022	DBHD	JLAND GROUP SDN. BHD. (FORMERLY KNOWN AS ABSOLUTE AMBIENT SDN. BHD.) [SSH]	106	227,161	69.515	
15 Apr 2022 - 15 Apr 2022	DBHD	JOHOR CORPORATION [SSH]	132	271,019	82.936	
15 Apr 2022 - 15 Apr 2022	DBHD	JLAND GROUP SDN. BHD. (FORMERLY KNOWN AS ABSOLUTE AMBIENT SDN. BHD.) [SSH]	132	227,054	69.483	
22 Apr 2022 - 22 Apr 2022	DESTINI	DATO ROZABIL @ ROZAMUJIB BIN ABDUL RAHMAN [DIR/CEO]	-575	295,656	17.773	
20 Apr 2022 - 20 Apr 2022	DESTINI	DATO' ROZABIL @ ROZAMUJIB BIN ABDUL RAHMAN [SSH]	-575	295,656	17.773	
15 Apr 2022 - 15 Apr 2022	DFX	INSAS BERHAD [SSH]	200	195,416	26.205	
15 Apr 2022 - 15 Apr 2022	DFX	INSAS TECHNOLOGY BERHAD [SSH]	200	195,416	26.205	
15 Apr 2022 - 15 Apr 2022	DFX	DATO' SRI THONG KOK KHEE [SSH]	200	195,416	26.205	
18 Apr 2022 - 18 Apr 2022	DIALOG	EMPLOYEES PROVIDENT FUND BOARD [SSH]	306	777,488	13.78	
15 Apr 2022 - 15 Apr 2022	DIALOG	EMPLOYEES PROVIDENT FUND BOARD [SSH]	93	777,182	13.77	
14 Apr 2022 - 14 Apr 2022	DIALOG	EMPLOYEES PROVIDENT FUND BOARD [SSH]	1,200	777,089	13.77	
13 Apr 2022 - 13 Apr 2022	DIALOG	EMPLOYEES PROVIDENT FUND BOARD [SSH]	1,000	775,889	13.75	
20 Apr 2022 - 20 Apr 2022	DOLMITE	MR LEW CHOONG KEONG [DIR/CEO]	50	51	0.009	
14 Apr 2022 - 14 Apr 2022	DPHARMA	EMPLOYEES PROVIDENT FUND BOARD [SSH]	25	86,299	9.164	
21 Apr 2022 - 22 Apr 2022	DSOINIC	MR CHEW BEN BEN [SSH]	20,000	267,253	9.33	
20 Apr 2022 - 20 Apr 2022	DSOINIC	MR CHEW BEN BEN [SSH]	-2,500	287,253	10.028	
15 Apr 2022 - 18 Apr 2022	DSOINIC	MR CHEW BEN BEN [SSH]	-23,000	289,753	10.115	
15 Apr 2022 - 15 Apr 2022	DSOINIC	ENCIK SAFIAN BIN MOHD YUNUS [DIR/CEO]	-31,500	264,231	9.225	
15 Apr 2022 - 15 Apr 2022	DSOINIC	ENCIK SAFIAN BIN MOHD YUNUS [SSH]	-31,500	264,231	9.225	
21 Apr 2022 - 21 Apr 2022	ECOFIRS	MR TEOH SENG AUN [SSH]	-4,100	83,697	7.191	
20 Apr 2022 - 20 Apr 2022	ECOWLD	DATO' LEONG KOK WAH [SSH]	-330	1,190,844	40.445	
20 Apr 2022 - 20 Apr 2022	ECOWLD	DATO' LEONG KOK WAH [DIR/CEO]	-330	1,190,844	40.445	
20 Apr 2022 - 20 Apr 2022	ECOWLD	ECO WORLD DEVELOPMENT HOLDINGS SDN. BHD. [SSH]	-330	220,925	7.503	
20 Apr 2022 - 20 Apr 2022	ECOWLD	TAN SRI ABDUL RASHID BIN ABDUL MANAF [DIR/CEO]	-330	220,925	7.503	
20 Apr 2022 - 20 Apr 2022	ECOWLD	TAN SRI ABDUL RASHID BIN ABDUL MANAF [SSH]	-330	220,925	7.503	
14 Apr 2022 - 14 Apr 2022	ECOWLD	DATO' LEONG KOK WAH [DIR/CEO]	-604	1,191,174	40.456	
14 Apr 2022 - 14 Apr 2022	ECOWLD	DATO' LEONG KOK WAH [SSH]	-604	1,191,174	40.456	
14 Apr 2022 - 14 Apr 2022	ECOWLD	ECO WORLD DEVELOPMENT HOLDINGS SDN. BHD. [SSH]	-604	221,255	7.515	
14 Apr 2022 - 14 Apr 2022	ECOWLD	TAN SRI ABDUL RASHID BIN ABDUL MANAF [SSH]	-604	221,255	7.515	
14 Apr 2022 - 14 Apr 2022	ECOWLD	TAN SRI ABDUL RASHID BIN ABDUL MANAF [DIR/CEO]	-604	221,255	7.515	
13 Apr 2022 - 13 Apr 2022	ECOWLD-WB	DATO' LEONG KOK WAH [DIR/CEO]	238,479	238,479	40.497	
13 Apr 2022 - 13 Apr 2022	ECOWLD-WB	TAN SRI DATO' SRI LIEW KEE SIN [DIR/CEO]	31,650	87,048	14.782	
13 Apr 2022 - 13 Apr 2022	ECOWLD-WB	TAN SRI ABDUL RASHID BIN ABDUL MANAF [DIR/CEO]	44,495	44,495	7.556	
21 Apr 2022 - 21 Apr 2022	ENGAH	MR EWE ENG KAH [SSH]	500	55,495	46.99	
21 Apr 2022 - 21 Apr 2022	ENGAH	MADAM NEOH LAY HWA [SSH]	500	55,495	46.99	
21 Apr 2022 - 21 Apr 2022	ENGAH	MR EWE ENG KAH [DIR/CEO]	500	55,495	46.99	
21 Apr 2022 - 21 Apr 2022	ENGAH	MISS EWE WEI RU [DIR/CEO]	600	4,600	3.89	
21 Apr 2022 - 21 Apr 2022	ENGAH	MR EWE WEE TING [DIR/CEO]	600	4,600	3.89	
18 Apr 2022 - 18 Apr 2022	ENGAH	MR EWE ENG KAH [DIR/CEO]	45	54,995	46.56	
18 Apr 2022 - 18 Apr 2022	ENGAH	MADAM NEOH LAY HWA [SSH]	45	54,995	46.56	
18 Apr 2022 - 18 Apr 2022	ENGAH	MR EWE ENG KAH [SSH]	45	54,995	46.56	
13 Apr 2022 - 13 Apr 2022	F&N	EMPLOYEES PROVIDENT FUND BOARD [SSH]	-69	46,759	12.749	
15 Apr 2022 - 15 Apr 2022	FAJAR	DATUK SERI LAU KUAN KAM [DIR/CEO]	6	33,863	4.566	
14 Apr 2022 - 14 Apr 2022	FFB	EMPLOYEES PROVIDENT FUND BOARD [SSH]	-76	99,931	5.379	
13 Apr 2022 - 13 Apr 2022	FFB	EMPLOYEES PROVIDENT FUND BOARD [SSH]	-48	100,007	5.383	
15 Apr 2022 - 15 Apr 2022	FPGROUP	DATO' ONG CHOON HENG [SSH]	245	186,061	34.436	
15 Apr 2022 - 15 Apr 2022	FPGROUP	DATO' ONG CHOON HENG [DIR/CEO]	245	186,061	34.436	
21 Apr 2022 - 21 Apr 2022	GAMUDA	KUMPULAN WANG PERSARAAN (DIPERBADANKAN) [KWAP] [SSH]	211	205,641	8.05	
20 Apr 2022 - 20 Apr 2022	GAMUDA	KUMPULAN WANG PERSARAAN (DIPERBADANKAN) [KWAP] [SSH]	372	205,430	8.04	
15 Apr 2022 - 15 Apr 2022	GBGAQRS	EMPLOYEES PROVIDENT FUND BOARD [SSH]	-715	35,316	6.507	
14 Apr 2022 - 14 Apr 2022	GBGAQRS	EMPLOYEES PROVIDENT FUND BOARD [SSH]	-500	36,031	6.638	
13 Apr 2022 - 13 Apr 2022	GBGAQRS	EMPLOYEES PROVIDENT FUND BOARD [SSH]	-78	36,531	6.731	
15 Apr 2022 - 15 Apr 2022	GCAP	MR LEE YEE LONG [SSH]	110	29,365	9.156	
15 Apr 2022 - 15 Apr 2022	GCAP	MR LEE POH HIN [SSH]	110	29,128	9.082	
18 Apr 2022 - 18 Apr 2022	GDEX	MR TEONG TECK LEAN [DIR/CEO]	500	2,198,986	39.408	
18 Apr 2022 - 18 Apr 2022	GDEX	MR TEONG TECK LEAN [SSH]	500	2,198,986	39.408	
20 Apr 2022 - 20 Apr 2022	GENP	KUMPULAN WANG PERSARAAN (DIPERBADANKAN) [SSH]	46	66,439	7.405	
15 Apr 2022 - 15 Apr 2022	GENP	EMPLOYEES PROVIDENT FUND BOARD [SSH]	57	113,387	12.638	
14 Apr 2022 - 14 Apr 2022	GENP	EMPLOYEES PROVIDENT FUND BOARD [SSH]	7	113,330	12.632	

Disclaimer: The information in Insider Activity is extracted from www.shareinvestor.com/fundamental/insider_trades. The information on this page is provided as a service to readers. It does not constitute financial advice and/or any investment recommendations. We assume no liability for damages resulting from or arising out of the use of such information. Whilst every effort is made to ensure accuracy, the information presented is not the official record of shareholder filings. Readers are advised to read the original filings on the Bursa Malaysia website at www.bursamalaysia.com



STROM
SWISS TIMEPIECES & JEWELLERY



StromWatch Asia
Tele : +65.9817.3378
Email : ll.stromasia@gmail.com
WWW.STROMWATCH.SWISS

Notice Period is 17 April 2022 - 23 April 2022

Effective Change Date	Stock Name	Buyer/ Seller Name [Classification]	Bought / (Sold) ['000]	No. of Shares After Trade ['000]	
			Total	Total	% Held
15 Apr 2022 - 15 Apr 2022	GENP	KUMPULAN WANG PERSARAAN (DIPERBADANKAN) [SSH]	16	66,393	7.4
13 Apr 2022 - 13 Apr 2022	GENP	EMPLOYEES PROVIDENT FUND BOARD [SSH]	77	113,085	12.604
20 Apr 2022 - 20 Apr 2022	HARBOUR	SAMARANG UCITS - SAMARANG ASIAN PROSPERITY [SSH]	500	20,447	5.13
20 Apr 2022 - 20 Apr 2022	HEIM	KAYNE ANDERSON RUDNICK INVESTMENT MANAGEMENT LLC. [SSH]	242	16,495	5.46
14 Apr 2022 - 18 Apr 2022	HEXTAR	DATO' ONG CHOO MENG [SSH]	-7,688	896,157	68.849
14 Apr 2022 - 18 Apr 2022	HEXTAR	DATO' ONG CHOO MENG [DIR/CEO]	-7,688	896,157	68.849
14 Apr 2022 - 18 Apr 2022	HEXTAR	DATO' ONG SOON HO [DIR/CEO]	-7,688	781,104	60.01
14 Apr 2022 - 18 Apr 2022	HEXTAR	HEXTAR HOLDINGS SDN. BHD. [SSH]	-7,688	781,104	60.01
14 Apr 2022 - 18 Apr 2022	HEXTAR	DATO' ONG SOON HO [SSH]	-7,688	781,104	60.01
18 Apr 2022 - 18 Apr 2022	HHGROUP	MR CHNG CHEN MONG [SSH]	97,674	171,159	24.18
18 Apr 2022 - 18 Apr 2022	HHGROUP	MADAM TAN POH CHENG [SSH]	97,674	162,791	22.998
18 Apr 2022 - 18 Apr 2022	HHGROUP	CFAMILLIE HOLDINGS SDN BHD [SSH]	20,929	162,791	22.998
18 Apr 2022 - 18 Apr 2022	HHGROUP	MR GOH BOON LEONG [SSH]	43,651	114,587	16.188
18 Apr 2022 - 18 Apr 2022	HHGROUP	DATO' H'NG CHOON SENG [DIR/CEO]	29,896	108,232	15.291
18 Apr 2022 - 18 Apr 2022	HHGROUP	DATO' H'NG CHOON SENG [SSH]	29,896	108,232	15.291
18 Apr 2022 - 18 Apr 2022	HHGROUP	MR GOH VINCENT [SSH]	20,930	72,752	10.278
18 Apr 2022 - 18 Apr 2022	HHGROUP	MR HO WHYE CHONG [DIR/CEO]	20,930	70,349	9.938
18 Apr 2022 - 18 Apr 2022	HHGROUP	MR HO WHYE CHONG [SSH]	20,930	70,349	9.938
18 Apr 2022 - 18 Apr 2022	HHGROUP	MR H'NG JIA MIN [SSH]	20,930	59,651	8.427
18 Apr 2022 - 18 Apr 2022	HHGROUP	MISS H'NG JIA QI [SSH]	20,930	52,429	7.407
18 Apr 2022 - 18 Apr 2022	HHGROUP	MR NG CHIN NAM [DIR/CEO]	4,814	8,048	1.137
18 Apr 2022 - 18 Apr 2022	HH-GROUP-WA	DATO' H'NG CHOON SENG [DIR/CEO]	3,297	35,714	21.196
18 Apr 2022 - 18 Apr 2022	HH-GROUP-WA	MR NG CHIN NAM [DIR/CEO]	2,327	3,985	2.365
18 Apr 2022 - 18 Apr 2022	HLBANK	EMPLOYEES PROVIDENT FUND BOARD [SSH]	186	207,428	9.941
15 Apr 2022 - 15 Apr 2022	HLBANK	EMPLOYEES PROVIDENT FUND BOARD [SSH]	21	207,242	9.932
14 Apr 2022 - 14 Apr 2022	HLBANK	EMPLOYEES PROVIDENT FUND BOARD [SSH]	-449	207,221	9.931
13 Apr 2022 - 13 Apr 2022	HLBANK	EMPLOYEES PROVIDENT FUND BOARD [SSH]	-126	207,670	9.952
20 Apr 2022 - 21 Apr 2022	HSL	DATO YU CHEE HOE [SSH]	258	495,856	90.235
20 Apr 2022 - 21 Apr 2022	HSL	DATO YU CHEE HOE [DIR/CEO]	258	495,856	90.235
20 Apr 2022 - 21 Apr 2022	HSL	MADAM TANG SING NGIUK [SSH]	258	474,017	86.261
20 Apr 2022 - 21 Apr 2022	HSL	HOCK SENG LEE ENTERPRISE SDN BHD [SSH]	258	466,385	84.872
15 Apr 2022 - 18 Apr 2022	HSL	DATO YU CHEE HOE [SSH]	223	495,598	90.188
15 Apr 2022 - 18 Apr 2022	HSL	DATO YU CHEE HOE [DIR/CEO]	223	495,598	90.188
15 Apr 2022 - 18 Apr 2022	HSL	MADAM TANG SING NGIUK [SSH]	223	473,759	86.214
15 Apr 2022 - 18 Apr 2022	HSL	HOCK SENG LEE ENTERPRISE SDN BHD [SSH]	223	466,127	84.825
20 Apr 2022 - 21 Apr 2022	IBHD-PA	TAN SRI LIM KIM HONG [DIR/CEO]	68	601,841	83.538
20 Apr 2022 - 21 Apr 2022	IBHD-PA	TAN SRI LIM KIM HONG [SSH]	68	601,841	83.538
20 Apr 2022 - 21 Apr 2022	IBHD-PA	SUMUR VENTURES SDN BHD [SSH]	68	579,278	80.406
20 Apr 2022 - 21 Apr 2022	IBHD-PA	SUMURWANG SDN BHD [SSH]	68	510,951	70.922
15 Apr 2022 - 15 Apr 2022	IBHD-PA	TAN SRI LIM KIM HONG [DIR/CEO]	0.7	601,774	83.529
15 Apr 2022 - 15 Apr 2022	IBHD-PA	TAN SRI LIM KIM HONG [SSH]	0.7	601,774	83.529
15 Apr 2022 - 15 Apr 2022	IBHD-PA	SUMUR VENTURES SDN BHD [SSH]	0.7	579,211	80.397
15 Apr 2022 - 15 Apr 2022	IBHD-PA	SUMURWANG SDN BHD [SSH]	0.7	510,884	70.913
21 Apr 2022 - 21 Apr 2022	IGBREIT	KUMPULAN WANG PERSARAAN (DIPERBADANKAN) [SSH]	-542	264,612	7.401
18 Apr 2022 - 18 Apr 2022	IGBREIT	EMPLOYEES PROVIDENT FUND BOARD ("EPF BOARD") [SSH]	-63	406,017	11.356
20 Apr 2022 - 20 Apr 2022	IGBREIT	KUMPULAN WANG PERSARAAN (DIPERBADANKAN) [SSH]	-667	265,153	7.416
15 Apr 2022 - 15 Apr 2022	IGBREIT	EMPLOYEES PROVIDENT FUND BOARD ("EPF BOARD") [SSH]	-49	406,080	11.357
18 Apr 2022 - 18 Apr 2022	IGBREIT	KUMPULAN WANG PERSARAAN (DIPERBADANKAN) [SSH]	-242	265,820	7.435
14 Apr 2022 - 14 Apr 2022	IGBREIT	EMPLOYEES PROVIDENT FUND BOARD ("EPF BOARD") [SSH]	695	406,129	11.359
15 Apr 2022 - 15 Apr 2022	IGBREIT	KUMPULAN WANG PERSARAAN (DIPERBADANKAN) [SSH]	-180	266,062	7.441
13 Apr 2022 - 13 Apr 2022	IGBREIT	EMPLOYEES PROVIDENT FUND BOARD ("EPF BOARD") [SSH]	155	405,434	11.339
18 Apr 2022 - 18 Apr 2022	IHH	EMPLOYEES PROVIDENT FUND BOARD [SSH]	124	858,556	9.753
15 Apr 2022 - 15 Apr 2022	IHH	EMPLOYEES PROVIDENT FUND BOARD [SSH]	61	858,432	9.752
21 Apr 2022 - 21 Apr 2022	IJM	KUMPULAN WANG PERSARAAN (DIPERBADANKAN) [SSH]	-17	291,208	8.247
15 Apr 2022 - 15 Apr 2022	IJM	URUSHARTA JAMAAH SDN BHD [SSH]	-1,000	215,808	6.112
14 Apr 2022 - 14 Apr 2022	IJM	URUSHARTA JAMAAH SDN BHD [SSH]	-700	216,808	6.14
13 Apr 2022 - 13 Apr 2022	IJM	URUSHARTA JAMAAH SDN BHD [SSH]	-220	217,508	6.16
14 Apr 2022 - 14 Apr 2022	INARI	EMPLOYEES PROVIDENT FUND BOARD [SSH]	2,000	281,573	7.597
13 Apr 2022 - 13 Apr 2022	INARI	EMPLOYEES PROVIDENT FUND BOARD [SSH]	2,988	279,573	7.543
20 Apr 2022 - 20 Apr 2022	INNO	ENCIK ASGARI BIN MOHD FUAD STEPHENS [DIR/CEO]	-500	5,251	1.096
14 Apr 2022 - 14 Apr 2022	INNO	ENCIK ASGARI BIN MOHD FUAD STEPHENS [DIR/CEO]	-450	5,751	1.201
03 Mar 2022 - 03 Mar 2022	INNO	ENCIK ASGARI BIN MOHD FUAD STEPHENS [DIR/CEO]	-450	6,201	1.295
14 Apr 2022 - 14 Apr 2022	IOICORP	EMPLOYEES PROVIDENT FUND BOARD [SSH]	-7	713,534	11.485
15 Apr 2022 - 15 Apr 2022	IOIPG	EMPLOYEES PROVIDENT FUND BOARD [SSH]	300	442,752	8.041
21 Apr 2022 - 21 Apr 2022	IREKA	ENCIK MOHD HASNUL ISMAR BIN MOHD ISMAIL [DIR/CEO]	-326	2,454	1.077
21 Apr 2022 - 21 Apr 2022	IREKA	ENCIK WAN AHMAD NAZIM BIN MOHAMED NOOR [DIR/CEO]	-326	2,454	1.077
18 Apr 2022 - 18 Apr 2022	IREKA	ENCIK MOHD HASNUL ISMAR BIN MOHD ISMAIL [DIR/CEO]	77	2,778	1.22
18 Apr 2022 - 18 Apr 2022	IREKA	ENCIK WAN AHMAD NAZIM BIN MOHAMED NOOR [DIR/CEO]	76	2,778	1.22
20 Apr 2022 - 20 Apr 2022	JCBNEXT	MISS KOO TUN KIT BETTY [SSH]	12,000	12,201	9.241
20 Apr 2022 - 20 Apr 2022	JERASIA	MR YEE JIA CHENG [SSH]	-300	4,448	5.421
18 Apr 2022 - 18 Apr 2022	JERASIA	MR YEE JIA CHENG [SSH]	1,258	4,748	5.786
21 Apr 2022 - 21 Apr 2022	KIPREIT	DATIN TEH SIEW CHIN [SSH]	17,900	34,347	6.797
13 Apr 2022 - 13 Apr 2022	KLCC	EMPLOYEES PROVIDENT FUND BOARD [SSH]	2	180,909	10.021
13 Apr 2022 - 13 Apr 2022	KLCC	EMPLOYEES PROVIDENT FUND BOARD [SSH]	2	180,909	10.021
15 Apr 2022 - 15 Apr 2022	KLK	EMPLOYEES PROVIDENT FUND BOARD [SSH]	-524	111,038	10.299
14 Apr 2022 - 14 Apr 2022	KLK	EMPLOYEES PROVIDENT FUND BOARD [SSH]	-16	111,562	10.347
13 Apr 2022 - 13 Apr 2022	KLK	EMPLOYEES PROVIDENT FUND BOARD [SSH]	-38	111,578	10.349
14 Apr 2022 - 18 Apr 2022	KOSSAN	EMPLOYEES PROVIDENT FUND BOARD [SSH]	667	224,728	8.807
13 Apr 2022 - 13 Apr 2022	KOSSAN	EMPLOYEES PROVIDENT FUND BOARD [SSH]	262	224,061	8.781
10 Jan 2022 - 10 Jan 2022	KSSC	DATO' TIN @ TAN PEK-HAN [DIR/CEO]	200	1,400	1.125
20 Apr 2022 - 21 Apr 2022	KYM	DATO LIM KHENG YEW [DIR/CEO]	2,000	60,450	40.329
20 Apr 2022 - 21 Apr 2022	KYM	DATO LIM KHENG YEW [SSH]	2,000	60,450	40.329
20 Apr 2022 - 21 Apr 2022	KYM	MR LIM TZE THEAN [DIR/CEO]	2,000	21,450	14.31
20 Apr 2022 - 21 Apr 2022	KYM	MR LIM TZE THEAN [SSH]	2,000	21,450	14.31
20 Apr 2022 - 21 Apr 2022	KYM	WEST RIVER CAPITAL SDN BHD [SSH]	2,000	10,800	7.205
20 Apr 2022 - 20 Apr 2022	LIHEN	CHUA LEE SENG [DIR/CEO]	-90	77,059	42.81
20 Apr 2022 - 20 Apr 2022	LIHEN	CHUA LEE SENG [SSH]	-90	77,059	42.81
18 Apr 2022 - 18 Apr 2022	LIHEN	CHUA LEE SENG [DIR/CEO]	-20	77,148	42.86
18 Apr 2022 - 18 Apr 2022	LIHEN	CHUA LEE SENG [SSH]	-20	77,148	42.86
20 Apr 2022 - 20 Apr 2022	MAG	MR NG MIN LIN [SSH]	3,000	425,002	29.446
20 Apr 2022 - 20 Apr 2022	MAG	MR NG MIN LIN [DIR/CEO]	3,000	425,002	29.446
21 Apr 2022 - 21 Apr 2022	MALAKOF	KUMPULAN WANG PERSARAAN (DIPERBADANKAN) ("KWAP") [SSH]	1,329	448,394	9.175
18 Apr 2022 - 18 Apr 2022	MALAKOF	EMPLOYEES PROVIDENT FUND BOARD [SSH]	-818	532,087	10.887

Notice Period is 17 April 2022 - 23 April 2022

Effective Change Date	Stock Name	Buyer/ Seller Name [Classification]	Bought / (Sold) ['000]	No. of Shares After Trade ['000]	
			Total	Total	% Held
15 Apr 2022 - 15 Apr 2022	MALAKOF	EMPLOYEES PROVIDENT FUND BOARD [SSH]	-519	532,904	10.904
14 Apr 2022 - 14 Apr 2022	MALAKOF	EMPLOYEES PROVIDENT FUND BOARD [SSH]	-712	533,423	10.915
14 Apr 2022 - 14 Apr 2022	MALAKOF	URUSHARTA JAMAAH SDN. BHD. [SSH]	700	497,426	10.178
13 Apr 2022 - 13 Apr 2022	MALAKOF	EMPLOYEES PROVIDENT FUND BOARD [SSH]	-457	534,135	10.929
20 Apr 2022 - 20 Apr 2022	MALPAC	MR LIM HONG LIANG [SSH]	47	18,832	25.11
20 Apr 2022 - 20 Apr 2022	MALPAC	MR LIM HONG LIANG [DIR/CEO]	47	18,832	25.11
20 Apr 2022 - 20 Apr 2022	MATANG	MR ANG KIAN YOU [SSH]	6,690	110,159	5.072
15 Apr 2022 - 15 Apr 2022	MATRIX	EMPLOYEES PROVIDENT FUND BOARD [SSH]	-8	74,884	8.976
13 Apr 2022 - 13 Apr 2022	MATRIX	EMPLOYEES PROVIDENT FUND BOARD [SSH]	145	74,892	8.977
20 Apr 2022 - 20 Apr 2022	MAYBANK	AMANAHRAYA TRUSTEES BERHAD - AMANAH SAHAM BUMIPUTERA [SSH]	-1,102	3,999,631	33.414
18 Apr 2022 - 18 Apr 2022	MAYBANK	EMPLOYEES PROVIDENT FUND BOARD [SSH]	3,000	1,662,584	13.89
18 Apr 2022 - 18 Apr 2022	MAYBANK	AMANAHRAYA TRUSTEES BERHAD - AMANAH SAHAM BUMIPUTERA [SSH]	-512	4,000,733	33.423
15 Apr 2022 - 15 Apr 2022	MAYBANK	AMANAHRAYA TRUSTEES BERHAD - AMANAH SAHAM BUMIPUTERA [SSH]	-985	4,001,246	33.427
14 Mar 2022 - 14 Mar 2022	MAYBANK	EMPLOYEES PROVIDENT FUND BOARD [SSH]	1,000	1,644,707	13.74
14 Apr 2022 - 14 Apr 2022	MAYBANK	AMANAHRAYA TRUSTEES BERHAD - AMANAH SAHAM BUMIPUTERA [SSH]	-3,000	3,965,870	33.132
13 Apr 2022 - 13 Apr 2022	MAYBANK	EMPLOYEES PROVIDENT FUND BOARD [SSH]	1,390	1,643,707	13.732
20 Apr 2022 - 20 Apr 2022	MBL-WA	MR CHUA EN HOM [DIR/CEO]	-150	9,151	13.193
20 Apr 2022 - 20 Apr 2022	MBL-WA	MR CHUA EN HOM [SSH]	-150	9,151	13.193
20 Apr 2022 - 20 Apr 2022	MEDIA	MORGAN STANLEY [SSH]	-60	114,098	10.286
18 Apr 2022 - 18 Apr 2022	MEDIA	MORGAN STANLEY [SSH]	-780	114,128	10.289
15 Apr 2022 - 15 Apr 2022	MEDIA	MORGAN STANLEY [SSH]	-160	114,518	10.324
14 Apr 2022 - 14 Apr 2022	MEDIA	MORGAN STANLEY [SSH]	-165	114,598	10.332
20 Apr 2022 - 22 Apr 2022	MFCB	MR GOH NAN KIOH [DIR/CEO]	32	316,290	33.459
20 Apr 2022 - 22 Apr 2022	MFCB	MR GOH NAN KIOH [SSH]	32	316,290	33.459
20 Apr 2022 - 22 Apr 2022	MFCB	CAMASIA LIMITED [SSH]	32	201,477	21.313
20 Apr 2022 - 22 Apr 2022	MFCB	CAM PROPERTY (MALAYSIA) SDN BHD [SSH]	32	199,992	21.156
20 Apr 2022 - 22 Apr 2022	MFCB	RUBBER THREAD INDUSTRIES (M) SDN BERHAD [SSH]	32	199,992	21.156
20 Apr 2022 - 22 Apr 2022	MFCB	LAJU RIANG SDN BHD [SSH]	32	199,992	21.156
14 Apr 2022 - 14 Apr 2022	MICROLN	DATUK SERI MAZLAN BIN LAZIM [DIR/CEO]	500	500	0.047
18 Apr 2022 - 18 Apr 2022	MISC	EMPLOYEES PROVIDENT FUND BOARD [SSH]	438	555,799	12.45
20 Apr 2022 - 20 Apr 2022	MISC	KUMPULAN WANG PERSARAAN (DIPERBADANKAN) (KWAP) [SSH]	-147	229,071	5.13
15 Apr 2022 - 15 Apr 2022	MISC	EMPLOYEES PROVIDENT FUND BOARD [SSH]	697	555,360	12.44
18 Apr 2022 - 18 Apr 2022	MISC	KUMPULAN WANG PERSARAAN (DIPERBADANKAN) (KWAP) [SSH]	-4	229,218	5.13
14 Apr 2022 - 14 Apr 2022	MISC	EMPLOYEES PROVIDENT FUND BOARD [SSH]	8	554,664	12.43
13 Apr 2022 - 13 Apr 2022	MISC	EMPLOYEES PROVIDENT FUND BOARD [SSH]	2,100	554,655	12.43
18 Apr 2022 - 18 Apr 2022	MYEG	EMPLOYEES PROVIDENT FUND BOARD [SSH]	3,000	379,005	5.132
15 Apr 2022 - 15 Apr 2022	MYEG	EMPLOYEES PROVIDENT FUND BOARD [SSH]	3,000	376,005	5.091
1					

Notice Period is 17 April 2022 - 23 April 2022

Effective Change Date	Stock Name	Buyer/ Seller Name [Classification]	Bought / (Sold) ['000]	No. of Shares After Trade ['000]	
			Total	Total	% Held
20 Apr 2022 - 20 Apr 2022	RANHILL	CHEVAL INFRASTRUCTURE FUND L.P. (ACTING VIA ITS GENERAL PARTNER TAEI MANAGEMENT CO. (CAYMAN) LTD) [SSH]	1,211	243,329	18.837
20 Apr 2022 - 20 Apr 2022	RANHILL	TAN SRI HAMDAN MOHAMAD [DIR/CEO]	2,015	404,984	31.352
20 Apr 2022 - 20 Apr 2022	RANHILL	TAN SRI HAMDAN MOHAMAD [SSH]	2,015	404,984	31.352
20 Apr 2022 - 20 Apr 2022	RANHILL	HAMDAN (L) FOUNDATION [SSH]	2,349	273,293	21.157
20 Apr 2022 - 20 Apr 2022	RANHILL	UNITED OVERSEAS BANK LIMITED [SSH]	583	117,216	9.074
20 Apr 2022 - 20 Apr 2022	RANHILL	ENCIK ABU TALIB BIN ABDUL RAHMAN [DIR/CEO]	0.166	34	0.003
18 Apr 2022 - 18 Apr 2022	RANHILL	TAN SRI HAMDAN MOHAMAD [SSH]	37,398	402,969	31.352
18 Apr 2022 - 18 Apr 2022	RANHILL	HAMDAN (L) FOUNDATION [SSH]	37,398	271,934	21.157
20 Apr 2022 - 20 Apr 2022	RANHILL	STATE GOVERNMENT OF JOHOR [SSH]	582	116,926	9.052
20 Apr 2022 - 20 Apr 2022	RANHILL	PERBADANAN SETIAUSAHA KERAJAAN JOHOR [THE STATE SECRETARY JOHORE (INCORPORATED)] [SSH]	582	116,926	9.052
21 Apr 2022 - 21 Apr 2022	RHBBANK	KUMPULAN WANG PERSARAAN (DIPERBADANKAN) [SSH]	1,500	233,715	5.641
18 Apr 2022 - 18 Apr 2022	RHBBANK	EMPLOYEES PROVIDENT FUND BOARD [SSH]	1,000	1,748,368	42.201
15 Apr 2022 - 15 Apr 2022	RHBBANK	EMPLOYEES PROVIDENT FUND BOARD [SSH]	1,000	1,747,368	42.177
14 Apr 2022 - 14 Apr 2022	RHBBANK	EMPLOYEES PROVIDENT FUND BOARD [SSH]	1,250	1,746,368	42.153
15 Apr 2022 - 15 Apr 2022	RHBBANK	KUMPULAN WANG PERSARAAN (DIPERBADANKAN) [SSH]	-197	232,215	5.605
13 Apr 2022 - 13 Apr 2022	RHBBANK	EMPLOYEES PROVIDENT FUND BOARD [SSH]	622	1,745,118	42.123
18 Apr 2022 - 18 Apr 2022	SAB	LEMBAGA TABUNG HAJI [SSH]	-30	16,090	11.75
15 Apr 2022 - 15 Apr 2022	SAB	LEMBAGA TABUNG HAJI [SSH]	-200	16,120	11.772
14 Apr 2022 - 14 Apr 2022	SAB	LEMBAGA TABUNG HAJI [SSH]	-100	16,320	11.918
21 Apr 2022 - 21 Apr 2022	SAM	TEMASEK HOLDINGS (PRIVATE) LIMITED [SSH]	-169	387,172	71.513
21 Apr 2022 - 21 Apr 2022	SAM	SINGAPORE AEROSPACE MANUFACTURING PTE LTD ("SAM SINGAPORE") [SSH]	-169	387,172	71.513
21 Apr 2022 - 21 Apr 2022	SAM	ACCURON TECHNOLOGIES LIMITED [SSH]	-169	387,172	71.513
18 Apr 2022 - 18 Apr 2022	SCBUILD	MISS CHUAN AI MAY [SSH]	93,315	93,315	8.688
18 Apr 2022 - 18 Apr 2022	SCGM	DATO' SRI LEE HOCK GUAN [SSH]	-180	41,864	21.74
14 Apr 2022 - 14 Apr 2022	SCGM	DATO' SRI LEE HOCK GUAN [SSH]	-93	42,044	21.834
18 Apr 2022 - 18 Apr 2022	SCIENTX	MR LIM PENG JIN [DIR/CEO]	130	878,445	56.637
18 Apr 2022 - 18 Apr 2022	SCIENTX	MR LIM PENG JIN [SSH]	130	878,353	56.631
18 Apr 2022 - 18 Apr 2022	SCIENTX	MR LIM PENG CHEONG [DIR/CEO]	130	831,881	53.635
18 Apr 2022 - 18 Apr 2022	SCIENTX	MR LIM PENG CHEONG [SSH]	130	824,672	53.17
14 Apr 2022 - 15 Apr 2022	SCIENTX	MR LIM PENG JIN [DIR/CEO]	50	878,315	56.628
14 Apr 2022 - 15 Apr 2022	SCIENTX	MR LIM PENG JIN [SSH]	50	878,223	56.623
14 Apr 2022 - 15 Apr 2022	SCIENTX	MR LIM PENG CHEONG [DIR/CEO]	125	831,751	53.627
14 Apr 2022 - 15 Apr 2022	SCIENTX	MR LIM PENG CHEONG [SSH]	101	824,542	53.162
21 Apr 2022 - 21 Apr 2022	SCIPACK	SAMARANG UCITS - SAMARANG ASIAN PROSPERITY [SSH]	2	17,269	5.275
20 Apr 2022 - 20 Apr 2022	SDS	MR TAN KIM SENG [DIR/CEO]	300	102,382	25.228
20 Apr 2022 - 20 Apr 2022	SDS	MR TAN KIM SENG [SSH]	300	102,382	25.228
18 Apr 2022 - 18 Apr 2022	SDS	MR TAN KIM SENG [SSH]	500	102,082	25.154
18 Apr 2022 - 18 Apr 2022	SDS	MR TAN KIM SENG [DIR/CEO]	500	102,082	25.154
18 Apr 2022 - 18 Apr 2022	SEALINK	WONG CHIE BIN [DIR/CEO]	100	190	0.038
18 Apr 2022 - 18 Apr 2022	SEALINK	MR WONG CHIE BIN [SSH]	100	190	0.038
18 Apr 2022 - 18 Apr 2022	SIME	EMPLOYEES PROVIDENT FUND BOARD [SSH]	50	592,621	8.703
20 Apr 2022 - 20 Apr 2022	SIME	KUMPULAN WANG PERSARAAN (DIPERBADANKAN) [SSH]	189	519,116	7.623
15 Apr 2022 - 15 Apr 2022	SIME	EMPLOYEES PROVIDENT FUND BOARD [SSH]	1,287	592,571	8.702
15 Apr 2022 - 15 Apr 2022	SIME	KUMPULAN WANG PERSARAAN (DIPERBADANKAN) [SSH]	1,131	518,927	7.62
14 Apr 2022 - 15 Apr 2022	SIME	AMANAHRAYA TRUSTEES BERHAD - AMANAH SAHAM BUMIPUTERA [SSH]	-3,000	2,735,000	40.162
14 Apr 2022 - 14 Apr 2022	SIME	EMPLOYEES PROVIDENT FUND BOARD [SSH]	-200	591,285	8.683
13 Apr 2022 - 13 Apr 2022	SIME	EMPLOYEES PROVIDENT FUND BOARD [SSH]	2,478	591,485	8.685
21 Apr 2022 - 21 Apr 2022	SIMEPLT	KUMPULAN WANG PERSARAAN (DIPERBADANKAN) [SSH]	298	445,922	6.448
20 Apr 2022 - 20 Apr 2022	SIMEPLT	KUMPULAN WANG PERSARAAN (DIPERBADANKAN) [SSH]	167	445,624	6.444
18 Apr 2022 - 18 Apr 2022	SIMEPLT	EMPLOYEES PROVIDENT FUND BOARD [SSH]	-5,243	974,568	14.089
15 Apr 2022 - 15 Apr 2022	SIMEPLT	EMPLOYEES PROVIDENT FUND BOARD [SSH]	-1,352	979,810	14.164
15 Apr 2022 - 18 Apr 2022	SIMEPLT	KUMPULAN WANG PERSARAAN (DIPERBADANKAN) [SSH]	795	445,457	6.442
13 Apr 2022 - 14 Apr 2022	SIMEPLT	EMPLOYEES PROVIDENT FUND BOARD [SSH]	-1,689	981,162	14.183
18 Apr 2022 - 18 Apr 2022	SIMEPLT	AMANAHRAYA TRUSTEES BERHAD - AMANAH SAHAM BUMIPUTERA [SSH]	-4,846	3,182,126	46.013
14 Apr 2022 - 14 Apr 2022	SIMEPLT	KUMPULAN WANG PERSARAAN (DIPERBADANKAN) [SSH]	-287	444,662	6.43
12 Apr 2022 - 13 Apr 2022	SIMEPLT	AMANAHRAYA TRUSTEES BERHAD - AMANAH SAHAM BUMIPUTERA [SSH]	-11,934	3,186,973	46.083
12 Apr 2022 - 12 Apr 2022	SIMEPLT	EMPLOYEES PROVIDENT FUND BOARD [SSH]	440	982,851	14.208
21 Apr 2022 - 21 Apr 2022	SIMEPROP	KUMPULAN WANG PERSARAAN (DIPERBADANKAN) [SSH]	1,550	428,703	6.304
15 Apr 2022 - 15 Apr 2022	SKPRES	KUMPULAN WANG PERSARAAN (DIPERBADANKAN) [SSH]	217	142,216	9.103
11 Apr 2022 - 11 Apr 2022	SLIC	MR SOON SENG TECK [DIR/CEO]	-500	90,500	71.26
11 Apr 2022 - 11 Apr 2022	SLIC	MR SOON SENG TECK [SSH]	-500	90,500	71.26
20 Apr 2022 - 20 Apr 2022	SLVEST	DATUK SERI CHIAU BENG TEIK JP [SSH]	-6,997	138,487	20.745
20 Apr 2022 - 20 Apr 2022	SLVEST	MR CHIAU HAW CHOON [SSH]	-6,997	129,660	19.423
20 Apr 2022 - 20 Apr 2022	SLVEST	MR CHIAU HAW CHOON [DIR/CEO]	-6,997	129,660	19.423
20 Apr 2022 - 20 Apr 2022	SLVEST	CHIN HIN GROUP BERHAD [SSH]	-6,997	129,100	19.339
20 Apr 2022 - 20 Apr 2022	SLVEST	DATIN SERI WONG MEE LENG [SSH]	-6,997	129,100	19.339
20 Apr 2022 - 20 Apr 2022	SLVEST	PP CHIN HIN REALTY SDN. BHD. [SSH]	-6,997	129,100	19.339
20 Apr 2022 - 20 Apr 2022	SLVEST	DIVINE INVENTIONS SDN. BHD. [SSH]	-6,997	129,100	19.339
15 Apr 2022 - 18 Apr 2022	SLVEST	DATUK SERI CHIAU BENG TEIK JP [SSH]	-15,100	145,484	21.793
15 Apr 2022 - 18 Apr 2022	SLVEST	MR CHIAU HAW CHOON [SSH]	-15,100	136,657	20.471
15 Apr 2022 - 18 Apr 2022	SLVEST	MR CHIAU HAW CHOON [DIR/CEO]	-15,100	136,657	20.471
15 Apr 2022 - 18 Apr 2022	SLVEST	CHIN HIN GROUP BERHAD [SSH]	-15,100	136,097	20.387
15 Apr 2022 - 18 Apr 2022	SLVEST	DATIN SERI WONG MEE LENG [SSH]	-15,100	136,097	20.387
15 Apr 2022 - 18 Apr 2022	SLVEST	PP CHIN HIN REALTY SDN. BHD. [SSH]	-15,100	136,097	20.387
15 Apr 2022 - 18 Apr 2022	SLVEST	DIVINE INVENTIONS SDN. BHD. [SSH]	-15,100	136,097	20.387
18 Apr 2022 - 18 Apr 2022	SMILE	DATO DR. WONG RUEN YUAN [DIR/CEO]	200	133,206	53.197
18 Apr 2022 - 18 Apr 2022	SMILE	DATO DR. WONG RUEN YUAN [SSH]	200	133,206	53.197
18 Apr 2022 - 18 Apr 2022	SMILE	DATIN WONG CHIEN YUE [SSH]	200	132,861	52.97
18 Apr 2022 - 18 Apr 2022	SMILE	DATIN WONG CHIEN YUE [DIR/CEO]	200	132,691	52.97
18 Apr 2022 - 18 Apr 2022	SMILE	SMILE-LINK RESOURCES (M) SDN BHD [SSH]	200	115,434	46.095
22 Apr 2022 - 22 Apr 2022	SOP	MR TANG TIONG ING [DIR/CEO]	-60	125	0.022
21 Apr 2022 - 21 Apr 2022	SOP	TANG TIONG ING [DIR/CEO]	-60	125	0.022
21 Apr 2022 - 21 Apr 2022	SPSETIA	KUMPULAN WANG PERSARAAN (DIPERBADANKAN) [SSH]	-1,000	394,200	9.69
18 Apr 2022 - 18 Apr 2022	SPSETIA	EMPLOYEES PROVIDENT FUND BOARD [SSH]	514	235,921	5.799
20 Apr 2022 - 20 Apr 2022	SPSETIA	KUMPULAN WANG PERSARAAN (DIPERBADANKAN) [SSH]	-1,720	395,200	9.715
15 Apr 2022 - 15 Apr 2022	SPSETIA	EMPLOYEES PROVIDENT FUND BOARD [SSH]	101	235,406	5.787
18 Apr 2022 - 18 Apr 2022	SPSETIA	KUMPULAN WANG PERSARAAN (DIPERBADANKAN) [SSH]	-1,000	396,920	9.757
14 Apr 2022 - 14 Apr 2022	SPSETIA	EMPLOYEES PROVIDENT FUND BOARD [SSH]	309	235,305	5.784
15 Apr 2022 - 15 Apr 2022	SPSETIA	KUMPULAN WANG PERSARAAN (DIPERBADANKAN) [SSH]	-518	397,920	9.782
13 Apr 2022 - 13 Apr 2022	SPSETIA	EMPLOYEES PROVIDENT FUND BOARD [SSH]	979	234,996	5.777

Notice Period is 17 April 2022 - 23 April 2022

Effective Change Date	Stock Name	Buyer/ Seller Name [Classification]	Bought / (Sold) ['000]	No. of Shares After Trade ['000]	
			Total	Total	% Held
13 Apr 2022 - 15 Apr 2022	STRAITS	ANG TUN YOUNG [SSH]	410	67,721	7.676
13 Apr 2022 - 13 Apr 2022	SUNREIT	EMPLOYEES PROVIDENT FUND BOARD [SSH]	80	537,008	15.68
15 Apr 2022 - 15 Apr 2022	SUNWAY	EMPLOYEES PROVIDENT FUND BOARD [SSH]	2	409,195	8.37
14 Apr 2022 - 14 Apr 2022	SUNWAY	EMPLOYEES PROVIDENT FUND BOARD [SSH]	200	409,193	8.37
13 Apr 2022 - 13 Apr 2022	SUNWAY	EMPLOYEES PROVIDENT FUND BOARD [SSH]	-214	408,993	8.37
18 Apr 2022 - 18 Apr 2022	SWIFT	MR LOO HOOI KEAT [SSH]	60	340,702	38.289
18 Apr 2022 - 18 Apr 2022	SWIFT	MR LOO HOOI KEAT [DIR/CEO]	60	340,702	38.289
15 Apr 2022 - 15 Apr 2022	SWIFT	KUMPULAN WANG PERSARAAN (DIPERBADANKAN) [SSH]	-1,470	79,496	8.934
18 Apr 2022 - 18 Apr 2022	SWKPLNT	DATO WONG KUO HEA [SSH]	-122	87,244	31.267
18 Apr 2022 - 18 Apr 2022	SWKPLNT	DATO WONG KUO HEA [DIR/CEO]	-122	87,244	31.267
18 Apr 2022 - 18 Apr 2022	SWKPLNT	DATUK ABDUL HAMED BIN SEPAWI [SSH]	-122	82,169	29.448
18 Apr 2022 - 18 Apr 2022	SWKPLNT	DATUK ABDUL HAMED BIN SEPAWI [DIR/CEO]	-122	82,169	29.448
18 Apr 2022 - 18 Apr 2022	SWKPLNT	MOUNTEX SDN. BHD. [SSH]	-122	81,968	29.376
18 Apr 2022 - 18 Apr 2022	SWKPLNT	TA ANN HOLDINGS BERHAD [SSH]	-122	81,968	29.376
21 Apr 2022 - 21 Apr 2022	T7GLOBAL	TAN SRI DATUK SERI TAN KEAN SOON [SSH]	350	141,312	19.103
21 Apr 2022 - 21 Apr 2022	T7GLOBAL	TAN SRI DATUK SERI TAN KEAN SOON [DIR/CEO]	350	141,312	19.103
14 Apr 2022 - 15 Apr 2022	T7GLOBAL	TAN SRI DATUK SERI TAN KEAN SOON [SSH]	299	140,962	19.056
14 Apr 2022 - 15 Apr 2022	T7GLOBAL	TAN SRI DATUK SERI TAN KEAN SOON [DIR/CEO]	299	140,962	19.056
21 Apr 2022 - 21 Apr 2022	TAANN	DATUK AMAR ABDUL HAMED BIN HAJI SEPAWI [SSH]	-490	149,435	33.926
21 Apr 2022 - 21 Apr 2022	TAANN	DATUK AMAR ABDUL HAMED BIN HAJI SEPAWI [DIR/CEO]	-490	149,435	33.926
21 Apr 2022 - 21 Apr 2022	TAANN	DATO WONG KUO HEA [DIR/CEO]	-829	133,319	30.267
21 Apr 2022 - 21 Apr 2022	TAANN	DATO WONG KUO HEA [SSH]	-829	128,509	29.175
21 Apr 2022 - 21 Apr 2022	TAANN	DATUK WAHAB BIN HAJI DOLAH [SSH]	-490	55,614	12.625
21 Apr 2022 - 21 Apr 2022	TAANN	UPAYA RAJANG SDN. BHD. [SSH]	-490	32,497	7.377
21 Apr 2022 - 21 Apr 2022	TAANN	WONG SIK ONN [DIR/CEO]	-33	486	0.11
20 Apr 2022 - 20 Apr 2022	TAANN	WONG SIK ONN [DIR/CEO]	-67	519	0.117
15 Apr 2022 - 15 Apr 2022	TAANN	DATUK AMAR ABDUL HAMED BIN HAJI SEPAWI [SSH]	500	149,925	34.037
15 Apr 2022 - 15 Apr 2022	TAANN	DATUK AMAR ABDUL HAMED BIN HAJI SEPAWI [DIR/CEO]	500	149,925	34.037
15 Apr 2022 - 15 Apr 2022	TAANN	DATO WONG KUO HEA [DIR/CEO]	500	134,148	30.455
15 Apr 2022 - 15 Apr 2022	TAANN	DATO WONG KUO HEA [SSH]	500	129,338	29.363
18 Apr 2022 - 18 Apr 2022	TAKAFUL	EMPLOYEES PROVIDENT FUND BOARD [SSH]	6	85,028	10.175
15 Apr 2022 - 15 Apr 2022	TAKAFUL	EMPLOYEES PROVIDENT FUND BOARD [SSH]	72	85,021	10.175
14 Apr 2022 - 14 Apr 2022	TAKAFUL	EMPLOYEES PROVIDENT FUND BOARD [SSH]	62	84,950	10.166
13 Apr 2022 - 13 Apr 2022	TAKAFUL	EMPLOYEES PROVIDENT FUND BOARD [SSH]	106	84,888	10.159
17 Jul 2022 - 17 Jul 2022	TALIWRK	LGB GROUP SDN BHD [SSH]	1,006,833	1,006,833	49.947
18 Apr 2022 - 18 Apr 2022	TCHONG	DATO' (DR) KHOR SWEE WAH @ KOH BEE LENG [DIR/CEO]	10	322,917	49.517
18 Apr 2022 - 18 Apr 2022	TCHONG	DATO' TAN HENG CHEW [DIR/CEO]	10	322,917	49.517
15 Apr 2022 - 15 Apr 2022	TENAGA	KUMPULAN WANG PERSARAAN (DIPERBADANKAN) [SSH]	-431	418,561	7.31
13 Apr 2022 - 13 Apr 2022	TENAGA	EMPLOYEES PROVIDENT FUND			

Swan and ShareInvestor host



TROPICAL SOIREE 2022

Swan Consultancy Sdn Bhd, a fast-growing corporate public relations and investor relations agency, returned with its first physical event since the MCO by co-hosting Tropical Soiree 2022 with ShareInvestor Malaysia Sdn Bhd at SPG by Bijan, Kuala Lumpur. Themed Tropical Soiree, it was a casual social networking event for clients, associates, journalists and friends. Key personalities in the corporate world who attended include TA Securities Holdings Berhad's Head of Corporate Finance, Ku Mun Fong; AmInvestment Bank Berhad's Head of Stockbroking Gan Kim Khoo; Dato' Wan Kamaruzaman Wan Ahmad, Executive Chairman of iPlus Technologies Sdn Bhd; Stef Yap, Host and Producer of 8TV;



Gan Kim Khoo



Ku Mun Fong



Tammy Chan



Dato' Wan Kamaruzaman Wan Ahmad

Berita Harian Business Editor Kamarulzaidi Kamis; China Press Business Editor Lily Goh and former Chief Investment Officer of Hong Leong Asset Management Berhad, Lye Thim Loong. Due to physical distancing SOP, the event this time around did not include many more clients.

Stefani Wan, Director, head of strategy and founder of Swan Consultancy said that this year marks the start of the 4th year since Swan Consultancy was founded. Swan was set up to bring personalised and customised PR and IR programmes to each client.



Lye Thim Loong



Wilson Loo



Wan Najib Wan Daud



Stefani Wan



Vincent Lau



Tony Goh



Fong Min Yuan



Thomas Huong



Gan Kah Jin



Fintan Ng



Tee Kim Xiong



Joseph Chai



Max Tan



Borhan Abu Samah



Tee Sze Chiah



Sherilyn Foong



Chong Sui San



Tan Aileen



Mandy Onn Wai Mun



Angeline Lai



Angela Grace Yeo

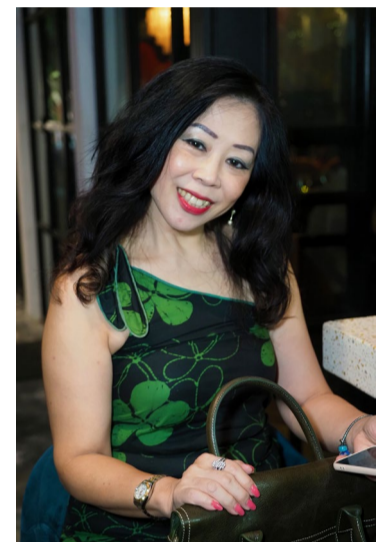
The boutique agency will continue to follow on the philosophy of ensuring a high level of service at all times. Founded in 2019, the agency has grown from strength to strength with a stable of clients ranging from listed companies to retail brands.



Edward Stanislaus



Elizabeth Tan



Leticia Wong



Danny Ng



Tan Jia Hui



Loui Low



Siao Ping



Kenneth Low



Saachi Asok Kumar



Terence Foo

Edward Stanislaus, managing director of ShareInvestor was excited to co-host this event with Swan Consultancy. Tropical



Kelvin Khoo



Karen Ho



Kamarulzaidi Kamis



Justin Teo



Joy Lee



Ray Low



Sean Phang

Soiree provided the opportunity meet the many familiar faces and get to know the guests on a more personal level. ShareInvestor Group has the largest network of Online IR Services serving over 600 PLCs in the region. It owns 3 stock market data analytics platforms BursaStation, SI Station & SI WebPro and is involved in retail investor education. It has also become a media-owner with the launch of Inve\$t weekly which goes out to a growing database of over 49,000 investors in Malaysia.



Laurine Pereira



Lai Kian Huat



Lily Goh



Tony Chan



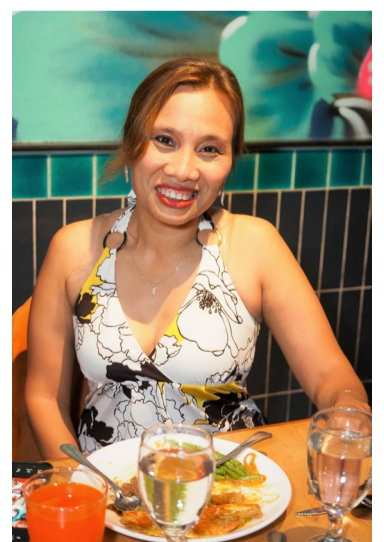
Jim Lim



Jayden Tan



Jayden Pang



Intan Maizura Ahmad Kamal



AXIATA GROUP BERHAD

We are pleased to announce that Axiata Group Berhad (**AXIATA**) had offered 3,198,800 ordinary shares in Axiata Shares under the Axiata Restricted Share Plan to the eligible

employees of the Axiata Group of Companies.

Details of the Restricted Share Offer are as follows:

- **Exercise Price of Axiata Shares**

Not applicable as the Axiata Shares will be issued upon vesting to the Eligible Employees.

- **Market Price of Axiata Share**

Closing Price of Axiata Share on Date of Offer: RM3.60.

- **Vesting Period**

The rights offered under the Restricted Share Offer are expected to vest over a 3-year period from the acceptance date of the Restricted Share Offer, subject to the Eligible Employees meeting their individual performance targets, the Axiata Group meeting certain financial targets exceeding certain thresholds. Unless the Eligible Employees meet their highest performance targets the total amount of rights offered under the Restricted Share Offer which will vest will be lower than the total amount of Axiata Shares offered.



MALAYSIA AIRPORTS HOLDINGS BERHAD

Malaysia Airports Holdings Berhad (**AIRPORT**)

is pleased to announce that the Company has, successfully issued the Senior Sukuk Wakalah in aggregate of RM800.0 million in nominal value from its Sukuk Wakalah Programme. The Sukuk Issuance represents Malaysia Airports Holdings Berhad's second issuance under its Sukuk Wakalah Programme since the last issuance in December 2021. With the recent opening of Malaysian international borders, MAHB managed to tap on prospects of market recovery and garnered respectable demand for its Senior Sukuk Wakalah with a final bid-to-cover ratio of more than 3.5 times the final issue size. On the back of this, MAHB had also successfully tightened the final price of the Senior Sukuk Wakalah substantially from the initial price guidance which represents the lowest ever spread over Malaysian Government Securities for a 5-year Sukuk issuance by MAHB under the Sukuk Wakalah Programme. Similar to the previous Sukuk issuance in December 2021, the Senior Sukuk Wakalah was also subsequently upsized from the initial target issue size of RM500.0 million to RM800.0 million.



SUNSURIA BERHAD

The Board of Directors of Sunsuria Berhad (**SUNSURIA**) wishes to announce that Sunsuria Residence Sdn

Bhd, a wholly owned subsidiary of Sunsuria Berhad, had entered into a Sale & Purchase Agreement to acquire a piece of vacant leasehold land held under H.S.(D) 5732, PT 10568, Mukim Ijok, Daerah Kuala Selangor, Negeri Selangor, measuring approximately 60.81 acres from Superjet Revenue Sdn. Bhd.



MALAYSIA BUILDING SOCIETY BERHAD (9417-K)

MALAYSIA BUILDING SOCIETY BERHAD

On behalf of our Board, we wish to announce that Malaysia Building Society Berhad (**MBSB**) and Permodalan Nasional Berhad have on even date entered into an exclusivity agreement, granting the Parties the exclusive right to enter into negotiations with each other to finalise the structure, pricing, and terms and conditions of the Proposed Transaction for a period commencing on the date of the Exclusivity Agreement.

Under the terms of the Exclusivity Agreement, the Parties have agreed not to take any action to solicit, negotiate, or otherwise facilitate any offer or inquiry from any other party relating to any transaction or proposed transaction involving the share capital, assets, businesses or undertakings of MBSB and MIDF including their subsidiaries during the Exclusivity Period.



**Upcoming
IPO**

14th June 2022

UNITRADE INDUSTRIES BERHAD
(ACE MARKET)

Disclaimer: The information in the Investor Relations page is extracted from individual companies' announcements in www.bursamalaysia.com. The information on this page is provided as a service to readers. We assume no liability for damages resulting from or arising out of the use of such information. Whilst every effort is made to ensure accuracy, the information presented has been simplified for your reading pleasure. Readers are advised to read the original and complete filings on the Bursa Malaysia website at https://www.bursamalaysia.com/market_information/announcements/company_announcement

Over 5 trading days



ShareInvestor WebPro (www.shareinvestor.com/my)

1. Price > Stock Prices
2. Select Market: NASDAQ / NYSE / IDX / SET / HKEX / SGX (One bourse at a time)
3. select Stocks Tab
4. select Ranking Top Gainers or Top Losers (Over 5 Trading Days)
5. Mouse over Column Layout > select Edit Customs > select Name > select Last Done Price > select 5 Days Change > select 52 Weeks High > select 52 Weeks Low > Mouse Over Column Layout > select Custom

NASDAQ (USD)

Top Gainers

Name	Last Done	Change Over 5 Days	52 Weeks High	52 Weeks Low
BOOKING HOLDINGS INC	2,317.800	+78.480	2,715.660	1,796.450
MERCADOLIBRE INC	1,040.000	+25.990	1,970.130	858.990
FIRST CITIZENS BANCSHARES INC NRTH	664.660	+23.370	947.710	611.470
META PLATFORMS INC	205.730	+17.660	384.330	179.500
OLD DOMINION FREIGHT LINE INC	292.260	+17.180	373.580	245.560

Top Losers

Name	Last Done	Change Over 5 Days	52 Weeks High	52 Weeks Low
TESLA INC	877.510	-131.270	1,243.490	546.980
OREILLY AUTOMOTIVE INC NEW	623.280	-104.870	748.680	519.320
DEXCOM INC	413.230	-59.180	659.452	318.450
CHARTER COMMUNICATIONS INC	461.490	-57.540	825.620	486.350
ALIGN TECHNOLOGY INC	304.660	-55.910	737.452	353.930

NYSE (USD)

Top Gainers

Name	Last Done	Change Over 5 Days	52 Weeks High	52 Weeks Low
NVR INC	4,492.810	+81.070	5,982.445	4,224.650
DILLARDS INC	307.960	+39.900	416.710	96.220
ARCH RESOURCES INC	169.050	+35.100	176.350	44.200
SHERWIN-WILLIAMS CO	281.310	+29.700	354.150	233.320
ALPHA METALLURGICAL RESOURCES INC	157.740	+28.500	164.690	11.750

Top Losers

Name	Last Done	Change Over 5 Days	52 Weeks High	52 Weeks Low
BERKSHIRE HATHAWAY INC	499,000.000	-6,440.000	544,389.260	407,773.230
AUTOZONE INC	2,014.440	-218.870	2,267.400	1,367.960
CABLE ONE INC	1,252.390	-90.560	2,136.135	1,226.600
MARKEL CORP	1,397.830	-85.380	1,519.245	1,155.000
TEXAS PACIFIC LAND CORPORATION	1,375.980	-56.780	1,773.950	946.290

IDX (Rupiah)

Top Gainers

Name	Last Done	Change Over 5 Days	52 Weeks High	52 Weeks Low
SOLUSI TUNAS PRATAMA TBK.	49,900.000	+7775.000	70,975.000	5,350.000
UNITED TRACTORS TBK.	30,275.000	+2150.000	30,800.000	18,525.000
PRIMA ANDALAN MANDIRI TBK.	6,950.000	+1350.000	6,975.000	1,325.000
M CASH INTEGRASI TBK.	13,150.000	+1275.000	15,000.000	4,850.000
INDO TAMBANGRAYA MEGAH TBK.	28,400.000	+1125.000	30,200.000	11,750.000

Top Losers

Name	Last Done	Change Over 5 Days	52 Weeks High	52 Weeks Low
DIAN SWASTATIKA SENTOSA TBK	30,000.000	-3,300.000	56,400.000	9,100.000
HARUM ENERGY TBK.	11,525.000	-1,375.000	14,750.000	4,700.000
INTI BANGUN SEJAHTERA TBK.	6,525.000	-1,375.000	10,375.000	3,420.000
BANK JAGO TBK.	11,650.000	-775.000	19,500.000	9,875.000
SIANTAR TOP TBK.	6,800.000	-700.000	10,500.000	6,500.000

SET (Thai Baht)

Top Gainers

Name	Last Done	Change Over 5 Days	52 Weeks High	52 Weeks Low
SCB	112.500	+24.500	138.000	85.750
JTS	566.000	+18.000	594.000	10.700
TIPH	63.500	+11.000	90.000	31.750
ALUCON	207.000	+7.500	220.000	167.000
NINE	9.750	+4.450	10.500	2.780

Top Losers

Name	Last Done	Change Over 5 Days	52 Weeks High	52 Weeks Low
THG	64.250	-34.500	99.500	24.200
FE	188.000	-32.000	246.000	178.000
DELTA	366.000	-15.000	790.000	310.000
SCBB	71.000	-14.750	89.000	66.000
RAM	51.250	-12.750	69.250	27.100

HKEX (HKD)

Top Gainers

Name	Last Done	Change Over 5 Days	52 Weeks High	52 Weeks Low
JD.COM INC	229.600	+23.200	365.000	160.100
ORIENT OVERSEAS INT	216.000	+14.200	249.000	91.350
ZTO EXPRESS (CAYMAN) INC	204.200	+14.000	269.000	141.200
MEITUAN	148.900	+11.100	338.000	103.500
YUM CHINA HOLDINGS INC	332.600	+8.600	544.000	281.000

Top Losers

Name	Last Done	Change Over 5 Days	52 Weeks High	52 Weeks Low
ASYMCHEM LABORATORIES (TIANJIN) CO	158.300	-44.700	388.000	155.200
CANSINO BIOLOGICS INC	78.000	-18.250	437.000	75.200
HANG SENG BANK	140.500	-13.500	169.500	131.000
MANULIFE FINANCIAL CORP	155.000	-12.400	170.800	140.200
NIO INC	135.000	-12.400	196.000	108.000

SGX (SGD)

Top Gainers

Name	Last Done	Change Over 5 Days	52 Weeks High	52 Weeks Low
YZJ SHIPBLDG CNY	5.280	+2.938	5.280	2.342
JARDINE C&C	29.100	+2.230	29.290	18.930
JMH USD	55.920	+0.420	67.860	49.980
CITYDEV	8.710	+0.280	8.760	6.522
CORTINA	4.550	+0.230	3.522	1.569

Top Losers

Name	Last Done	Change Over 5 Days	52 Weeks High	52 Weeks Low
PRUDENTIAL USD	14.400	-1.650	20.600	14.000
GREAT EASTERN	20.460	-1.030	23.450	19.800
UOB	30.140	-1.010	33.330	24.730
IFAST	5.000	-0.550	10.100	4.650
DBS	33.010	-0.380	37.490	28.530