

Invest

A Weekly e-Publication by SHAREINVESTOR

ISSUE
180
19 MARCH
2026

Scan or click me



Via email, every Friday

SELAMAT HARI RAYA

Aidilfitri

1447H

Wishing you a blessed celebration filled with peace and joy.

From all of us at
SHAREINVESTOR[®]
An AlphaInvest Company

Invest

A Weekly e-Publication by SHAREINVESTOR

ISSUE
180
19 MARCH
2026

Scan or click me



Via email, every Friday

Data and Investing Ideas

INVESTOR ACADEMY

See
more on
pages
11-17

Oil Near US\$120 as War Escalates –

Could This Spark a New Offshore Energy Boom

COMPANY SPOTLIGHT

- Leong Guan Holdings Limited Delivers 7% Revenue Growth to S\$40 Million on Normalised profit of S\$1.5 million in First Post-Listing Year **page 18**
- Inside Samurai 2K Aerosol Limited: How Aerosol Paint Technology Is Changing Car and Motorcycle Spraying **page 31**

PLUS

TOP STOCKS OF THE WEEK

- Dividend Stocks
on page 05
- Growth Stocks
on page 07
- Value Stocks
on page 09

MARKET AT A
GLANCE
on page 02

REGIONAL
MARKETS
on page 04

INVESTOR-ONE
PORTFOLIO
on pages 26-29

INSIDER
TRADES
on page 41

IR
ANNOUNCEMENTS
on pages 43-47

SHAREINVESTOR®

An AlphaInvest Company

Invest with Knowledge

MARKETING & SALES

SALES MANAGER

Nigel Lim

ADMIN

Gillian Ong

Dawn Ong

CONTENT

DIRECTOR

Edward Stanislaus

INVESTOR RELATIONS

GROUP MANAGING DIRECTOR

Edward Stanislaus

DIRECTOR

Zhao Yanjing

yanjing.zhao@shareinvestor.com

SENIOR MANAGER

Vivien Ong

vivien.ong@shareinvestor.com

SENIOR QC EXECUTIVE

Poh Lam Huat

lamhuat@shareinvestor.com

ALPHAINVEST HOLDINGS

BOARD OF DIRECTORS

CHAIRMAN

Patrick Daniel

GROUP CEO

Christopher Lee

GROUP COO

Lim Dau Hee

GROUP MD

Shanison Lin

SHAREINVESTOR PTE LTD

151 Lorong Chuan #04-07B
New Tech Park (Lobby G)
Singapore 556741

T (65) 6958 8000

F (65) 6958 8044

E admin@shareinvestor.com

W www.ShareInvestor.com

Advertise with us

Disclaimer:

The services information and data made available on or accessible via this newsletter including facts, views, advice, analyses, opinions and recommendations of individuals and organisations are for general information purposes only.

It is not intended as investment advice and must not be relied upon as such. ShareInvestor Pte Ltd and its third party information providers are not giving or purporting to give or representing or holding themselves out as giving financial, investment, tax, legal and other professional advice.

Advice from a securities professional is strongly advised.

Market at a Glance

Over 5 trading days as at yesterday

www.shareinvestor.com

market data at your fingertips



ShareInvestor WebPro (www.shareinvestor.com)

Prices > Stock Prices > SGX > click Stocks tab

1. mouse over Ranking > select Top Active > mouse over Column Layout > select Edit Customs > select Name > select Volume > select Last Done Price > mouse over Column Layout > select Custom
2. mouse over Ranking > select Top Turnover > mouse over Column Layout > select Edit Customs > select Name > select Last Done Price > select Value > mouse over Column Layout > select Custom
3. mouse over Ranking > select Top Gainers (Over 5 Trading Days) > mouse over

Column Layout > select Edit Customs > select Name > select Last Done Price > select 5 Days Change > select 5 Days % Change > mouse over Column Layout > select Custom

4. mouse over Ranking > select Top Losers (Over 5 Trading Days)
5. mouse over Ranking > select Top % Gainers (Over 5 Trading Days)
6. mouse over Ranking > select Top % Losers (Over 5 Trading Days)

Singapore Top Actives

(as at yesterday)

Name	Last Done	Volume
Addvalue Tech	0.089	111,328.0
Rex Intl	0.152	77,411.0
Wilton Resources	0.014	57,948.8
MarcoPolo Marine	0.154	49,759.9
ASTI	0.097	40,847.4
Hiap Seng Ind	0.016	39,478.7
HSI 28800MBeCW260429	0.033	39,125.9
Intl Cement	0.061	37,893.7
Genting Sing	0.680	33,149.5
Hong Lai Huat	0.098	29,531.9

Top Gainers

(over 5 Trading days as at yesterday)

Name	Last Done	5 Days Chg
Netflix 3xLongSG280725	6.850	3.060
CATL 5xLongSG270712	4.290	2.110
DBS	57.760	2.110
CATL 5xLongUB270730	2.940	1.490
SGX	19.690	1.440
Keppel 5xLongSG270706	6.000	1.320
XT Vietnam US\$	38.770	1.090
Alibaba 3xLongSG271125	4.750	1.050
NIO Inc. USD OV	6.000	1.020
NZ19100S 390701	96.001	1.000

Top Losers

(over 5 Trading days as at yesterday)

Name	Last Done	5 Days Chg
GLD SG\$	585.500	-21.200
GLD US\$	457.900	-18.100
SS SPDR S&P500 USD	674.810	-6.910
Xiaomi 3xShortSG271125	7.430	-2.330
BYD 3xShortSG271125	6.300	-1.500
SS SPDR DJIA USD	475.620	-1.380
JMH USD	77.340	-1.060
NZ13100V 330901	107.000	-1.000
AVGO 3xLongSG280420	2.880	-0.760
Xiaomi 5xShortSG261223	3.000	-0.760

Singapore Top Turnover

(as at yesterday)

Name	Last Done	Value
DBS	57.760	345,025,315
UOB	37.210	168,146,934
OCBC Bank	21.450	149,455,647
Singtel	5.130	147,905,371
SGX	19.690	94,998,345
YZJ Shipbldg SGD	4.110	89,890,481
Sembcorp Ind	6.100	68,308,569
Keppel	12.760	63,993,029
ST Engineering	11.150	58,685,531
CapLand IntCom T	2.400	53,330,542

Top % Gainers

(over 5 Trading days as at yesterday)

Name	Last Done	5 Days % Chg
NIO 5xLongSG271021	0.255	162.89
Wilmar MB eCW260630	0.021	110.00
CATL 5xLongUB270730	2.940	102.76
Autagco	0.002	100.00
Clearbridge	0.002	100.00
Southern Arch	0.002	100.00
CATL 5xLongSG270712	4.290	96.79
HSI 31600MBeCW260429	0.017	88.89
Netflix 3xLongSG280725	6.850	80.74
Geely 5xLongUB270630	0.270	74.19

Top % Losers

(over 5 Trading days as at yesterday)

Name	Last Done	5 Days % Chg
HSI 29200MBeCW260330	0.001	-75.00
OCBC Bk MB ePW260330	0.005	-72.22
CATL 5xShortSG280120	0.191	-71.28
HSI 30200MBeCW260330	0.001	-66.67
NASDAQ 22000MBePW260320	0.005	-64.29
Geely 5xShortUB270630	0.079	-64.09
Geely 5xShortSG260908	0.015	-57.14
HSI 28200MBeCW260330	0.007	-56.25
Geely 5xShortSG270827	0.295	-55.30
Renaissance United	0.001	-50.00

2026

InvestSG TRADING TOURNAMENT

COMPETE • TRADE



WIN UP TO

S\$6,000

Tournament Period:
6 - 24 April 2026

Join Now! >

INVESTSG

Organized by

INVESTSG

Sponsored by

PhillipCapital
Your Partner In Finance

UBS

Regional Markets

Over 5 trading days



ShareInvestor WebPro (www.shareinvestor.com)

1. Price > Stock prices
2. select Market: Bursa / HKEX / NYSE / NASDAQ (one bourse at a time)
3. select Stocks Tab
4. select Ranking Top Gainers or Top Losers (Over 5 Trading Days)
5. Mouse over Column Layout > select Edit Customs > select Last Done Price > select 5 Days Change > select 52 Weeks High > select 52 Weeks Low > Mouse Over Column Layout > select Custom

BURSA (RM)

Top Gainers				
Name	Last Done	5 Days Change	52 Weeks High	52 Weeks Low
UTDPLT	33.980	2.720	35.880	19.866
ALLIANZ-PA	22.000	1.020	23.340	16.680
PCHEM	4.900	0.970	5.420	2.750
GASMSIA	5.440	0.490	5.450	3.660
ITMAX	4.970	0.470	5.220	3.160

Top Losers				
Name	Last Done	5 Days Change	52 Weeks High	52 Weeks Low
NESTLE	100.900	-3.100	122.200	61.800
MCEMENT	6.950	-0.640	8.740	4.210
AJI	12.300	-0.460	15.000	12.360
BAT	6.030	-0.450	6.900	4.160
APOLLO	5.490	-0.360	6.730	5.510

HONG KONG (HKD)

Top Gainers				
Name	Last Done	5 Days Change	52 Weeks High	52 Weeks Low
CATL (3750)	650.500	100.500	685.000	291.000
KNOWLEDGE ATLAS (2513)	742.500	93.500	725.000	116.100
TRMSCIKOREA (2848)	1,405.000	82.000	1,611.000	460.400
GIGADEVICE (3986)	449.800	71.800	450.000	220.000
NUOBIKAN (2931)	59.450	59.435	56.300	46.400

Top Losers				
Name	Last Done	5 Days Change	52 Weeks High	52 Weeks Low
SPDR GOLD TRT (2840)	3,590.000	-135.000	4,015.000	2,140.000
SPDR GOLD TRT-R (82840)	3,157.000	-120.000	3,566.000	2,007.000
PATEO (2889)	133.500	-67.500	288.800	130.100
DEEPEXI TECH (1384)	44.280	-44.720	128.200	42.260
X TRNIFTY50 (3015)	1,919.500	-43.000	2,266.000	1,884.500

NYSE (USD)

Top Gainers				
Name	Last Done	5 Days Change	52 Weeks High	52 Weeks Low
ASA Gold	65.590	43.780	22.779	13.180
Ciena	376.500	36.550	379.420	49.210
Fair Isaac	1,199.930	34.700	2,217.600	1,068.671
Korea Fund	49.100	29.320	26.300	18.350
COOK	29.915	29.305	2.210	0.483

Top Losers				
Name	Last Done	5 Days Change	52 Weeks High	52 Weeks Low
Berkshire Hathaway A	738,390.390	-1,609.610	812,855.000	685,150.000
AutoZone	3,439.640	-272.780	4,388.110	3,210.720
US Bancorp DO-A	773.973	-101.797	908.000	830.000
Harbor PanAgora Dynamic Large Cap Core	24.051	-83.059	135.820	88.810
Eli Lilly	932.800	-67.040	1,133.950	623.780

NASDAQ (USD)

Top Gainers				
Name	Last Done	5 Days Change	52 Weeks High	52 Weeks Low
Booking Holdings	4,442.330	119.910	5,839.410	3,765.450
Elbit Systems	984.000	102.830	1,016.060	354.680
Sandisk	744.150	88.720	725.000	27.885
Drxn Dly MU Bull 2X ETF	245.000	69.770	249.100	6.770
GS 2x Lng MU Dly	216.920	62.010	216.210	6.040

Top Losers				
Name	Last Done	5 Days Change	52 Weeks High	52 Weeks Low
Ulta Beauty	523.070	-129.575	714.970	323.365
First Citizens BancShares A	1,788.280	-70.540	2,232.210	1,473.620
Atrium Therapeutics	13.770	-59.050	73.060	21.510
Credit Acceptance	459.440	-40.400	549.750	401.900
Daily Journal	502.010	-36.700	674.750	348.630

Dividend Stocks

Price & Total Shareholder Return (as at yesterday)

DEFINITION

Company is paying out dividend with low or moderate leverage.

CHART GUIDE

Total Shareholder Return (TSR) combines share price appreciation and distributions paid to show the total return to the shareholder expressed as a percentage.



ShareInvestor WebPro > Screener > Market Screener (FA & TA) > select SGX > add criteria

A. Criteria

- > click Add Criteria
- Fundamental Analysis Conditions tab >select (i) Dividend Yield
- Fundamental Analysis Conditions tab >select (ii) Dividend Payout (Historical)
- Fundamental Analysis Conditions tab >select (iii) Total Debt To Equity
- Fundamental Analysis Conditions tab >select (iv) Total Shareholder Returns

- Fundamental Analysis Conditions tab >select (v) Total Shareholder Returns
- Fundamental Analysis Conditions tab / >select (vi) CAGR of Dividend Per Share
- Fundamental Analysis Conditions tab >select (vii) CAGR of Dividend Per Share

B. Conditions (Criteria Filters)

1. Dividend Yield - select (more than) type (1) % for the past select (1) financial year(s)
2. Dividend Payout (Historical) - select (between) type (0.5) to type (1) times for the past select (1) financial year(s)
3. Total Debt to Equity - select (less than) type (1) for the past select (1) financial year(s)
4. Total Shareholder Return - select (more than) type (5) % for the past select (3) financial year(s)
5. Total Shareholder Return - select (more than) type (5) % for the past select (5) financial year(s)

6. CAGR of Dividend Per Share - select (less than) type (30) % for the past select (5) financial year(s)
 7. CAGR of Dividend Per Share - select (more than) type (1) % for the past select (5) financial year(s)
- > click Save Template > Create New Template type (Dividend Companies) > click Create
 - > click Save Template as > select Dividend Companies > click Save
 - > click Screen Now (may take a few minutes)
 - > Sort By: Select (Dividend Yield) Select (Desc)
 - > Mouse over stock name > Factsheet > looking for Total Shareholder Return



FIRST RESOURCES LIMITED (EB5.SI)

ANALYSIS

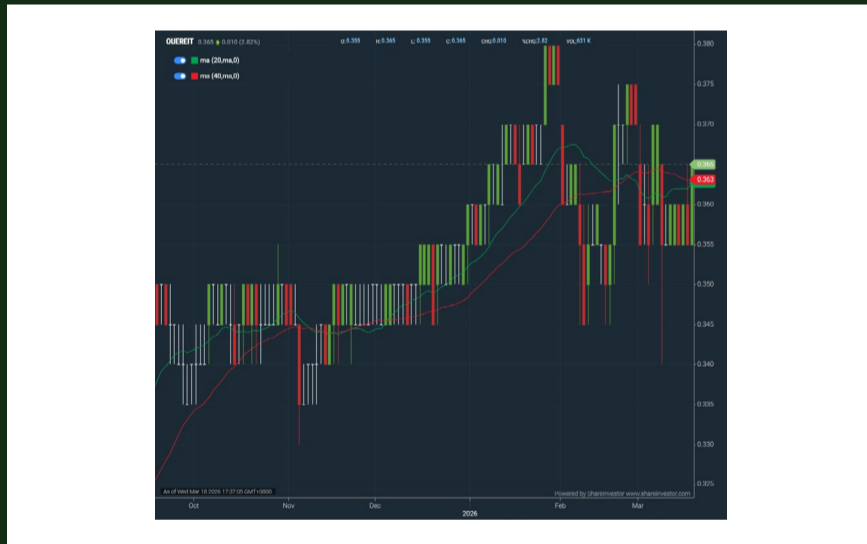


Period	Dividend Received	Capital Appreciation	Total Shareholder Return	
Short Term Return	5 Days	-	+0.280	+10.61 %
	10 Days	-	+0.600	+25.86 %
	20 Days	-	+0.660	+29.20 %
Medium Term Return	3 Months	-	+0.880	+43.14 %
	6 Months	-	+1.270	+76.97 %
	1 Year	0.108	+1.260	+82.41 %
Long Term Return	2 Years	0.180	+1.590	+133.08 %
	3 Years	0.325	+1.370	+109.35 %
	5 Years	0.434	+1.480	+132.92 %
Annualised Return	Annualised	-	-	+18.42 %



OUE REIT (TSOU.SI)

ANALYSIS



Period	Distribution Received	Capital Appreciation	Total Shareholder Return	
Short Term Return	5 Days	-	+0.010	+2.82 %
	10 Days	-	+0.005	+1.39 %
	20 Days	-	+0.015	+4.29 %
Medium Term Return	3 Months	0.013	+0.010	+6.48 %
	6 Months	0.013	+0.020	+9.57 %
	1 Year	0.022	+0.085	+38.21 %
Long Term Return	2 Years	0.043	+0.100	+53.96 %
	3 Years	0.064	+0.045	+34.06 %
	5 Years	0.111	-0.025	+22.05 %
Annualised Return	Annualised	-	-	+4.07 %



TAT SENG PACKAGING GROUP LTD (T12.SI)

ANALYSIS



Period	Dividend Received	Capital Appreciation	Total Shareholder Return	
Short Term Return	5 Days	-	-0.030	-2.46 %
	10 Days	-	-0.010	-0.83 %
	20 Days	-	+0.290	+32.22 %
Medium Term Return	3 Months	-	+0.295	+32.96 %
	6 Months	0.010	+0.295	+34.08 %
	1 Year	0.040	+0.320	+41.38 %
Long Term Return	2 Years	0.090	+0.480	+80.28 %
	3 Years	0.140	+0.525	+100.00 %
	5 Years	0.215	+0.420	+82.47 %
Annualised Return	Annualised	-	-	+12.78 %

INVESTSG

Discover top investing and trading ideas for Singapore Market



Investment Portfolio

Sample model portfolios tailored to different risk levels and investment goals.



Community

Connect with fellow investors, share market insights, and stay updated with the latest discussions.



Research Hub NEW

All-in-one place to access market insights, stock analyses, and investment research.



Stock Calendar COMING SOON

Stay updated on upcoming earnings, dividends, IPOs, and other key company events.

JOIN INVESTSG TODAY!

Gain insights including access to top industry leaders' investment portfolios and many more!



KennyLoh ✓

Professional Investor

REITirement Dividend investing

Since Inception 01/03/2025

Follow

14.94%

↑↓

P/L since inception ⓘ

17.73%

📊

Year to date ⓘ

Top current holdings	Current position Return (%)
TSOU QUE REIT	<p>\$1,387.50</p> <p style="color: green;">27.78%</p>
AJBU KEPPEL DC REIT	<p>\$1,269.00</p> <p style="color: green;">25.00%</p>
MXNU ELITE UK REIT	<p>\$1,217.40</p> <p style="color: green;">24.71%</p>

View Portfolio >

dancs ✓

Professional Investor

Active Investing (Small-Mid Cap) Swing trading

Since Inception 01/04/2025

Follow

12.12%

↑↓

P/L since inception ⓘ

49.35%

📊

Year to date ⓘ

Top current holdings	Current position Return (%)
P8Z BUMITAMA AGRICULTURE LTD.	<p>\$4,595.08</p> <p style="color: green;">56.00%</p>
5WV ASIAPHOS LIMITED	<p>\$598.02</p> <p style="color: green;">18.11%</p>
RE4 GEO ENERGY RESOURCES LIMITED	<p>\$3,488.00</p> <p style="color: green;">17.43%</p>

View Portfolio >

WilliamLiun... ✓

Professional Investor

Left-Side and Right-Side Trading Swing trading

Since Inception 03/06/2025

Follow

10.58%

↑↓

P/L since inception ⓘ

12.92%

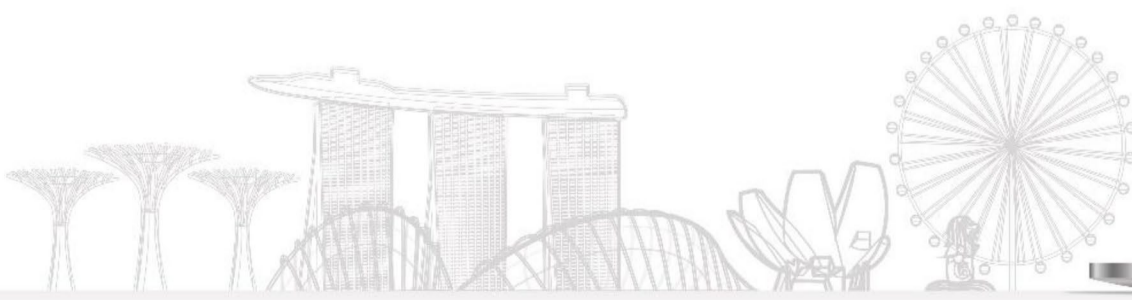
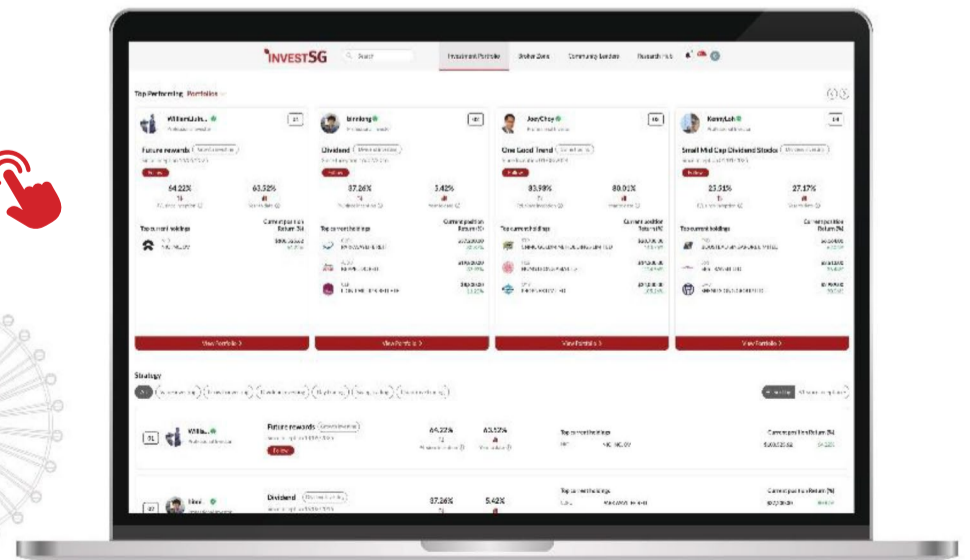
📊

Year to date ⓘ

Top current holdings	Current position Return (%)
OYY PROPNECX LIMITED	<p>\$7,320.00</p> <p style="color: green;">70.93%</p>
BS6 YANGZIJIANG SHIPBLDG HLDGS LTD	<p>\$5,720.00</p> <p style="color: green;">53.06%</p>
H22 HONG LEONG ASIA LTD.	<p>\$8,050.00</p> <p style="color: green;">45.10%</p>

View Portfolio >

www.InvestSG.Asia



DEFINITION Company revenue is growing and making good quality of earnings with positive Free Cash Flow.

CHART GUIDE Total Shareholder Return (TSR) combines share price appreciation and distributions paid to show the total return to the shareholder expressed as a percentage.



ShareInvestor WebPro > Screener > Market Screener (FA & TA) > select SGX > add criteria

A. Criteria

1. Fundamental Analysis Conditions tab >select (i) Free Cash Flow, (ii) Revenue Growth, (iii) Gross Profit (Earnings) Margin, (iv) Quality of Earnings, (v) Total Shareholder Returns, > click Add Criteria
2. Fundamental Analysis Conditions tab >select (vi) Total Shareholder Returns > click Add Criteria

B. Conditions (Criteria Filters)

1. Free Cash Flow – select (more than) type (1) for the past select (1) financial year(s)
 2. Revenue Growth – select (more than) type (1) for the past select (1) financial year(s)
 3. Gross Profit (Earnings) Margin - select (more than) type (30) % for the past select (1) financial year(s)
 4. Quality of Earnings – select (more than) type (1) for the past select (1) financial year(s)
 5. Total Shareholder Return – select (more than) type (5) % for the past select (3) financial year(s)
 6. Total Shareholder Return – select (more than) type (5) % for the past select (5) financial year(s)
- > click Save Template > Create New Template type (Growth Companies) > click Create

- > click Save Template as > select Growth Companies > click Save
- > click Screen Now (may take a few minutes)
- > Sort By: Select (Revenue Growth) Select (Desc)
- > Mouse over stock name > Factsheet > looking for Total Shareholder Return



CNMC GOLDMINE HOLDINGS LIMITED (5TP.SI)



Period	Dividend Received	Capital Appreciation	Total Shareholder Return	
Short Term Return	5 Days	-	-0.120	-6.56 %
	10 Days	-	-0.330	-16.18 %
	20 Days	-	+0.410	+31.54 %
Medium Term Return	3 Months	-	+0.640	+59.81 %
	6 Months	-	+0.740	+76.29 %
	1 Year	0.025	+1.390	+442.19 %
Long Term Return	2 Years	0.036	+1.516	+800.00 %
	3 Years	0.040	+1.532	+883.15 %
	5 Years	0.048	+1.517	+810.88 %
Annualised Return	Annualised	-	-	+55.56 %



WEE HUR HOLDINGS LTD. (E3B.SI)



Period	Dividend Received	Capital Appreciation	Total Shareholder Return	
Short Term Return	5 Days	-	+0.015	+2.17 %
	10 Days	-	-0.055	-7.24 %
	20 Days	-	-0.180	-20.34 %
Medium Term Return	3 Months	-	+0.005	+0.71 %
	6 Months	-	-0.060	-7.84 %
	1 Year	0.083	+0.290	+89.88 %
Long Term Return	2 Years	0.089	+0.550	+412.26 %
	3 Years	0.094	+0.523	+339.01 %
	5 Years	0.104	+0.528	+357.06 %
Annualised Return	Annualised	-	-	+35.52 %

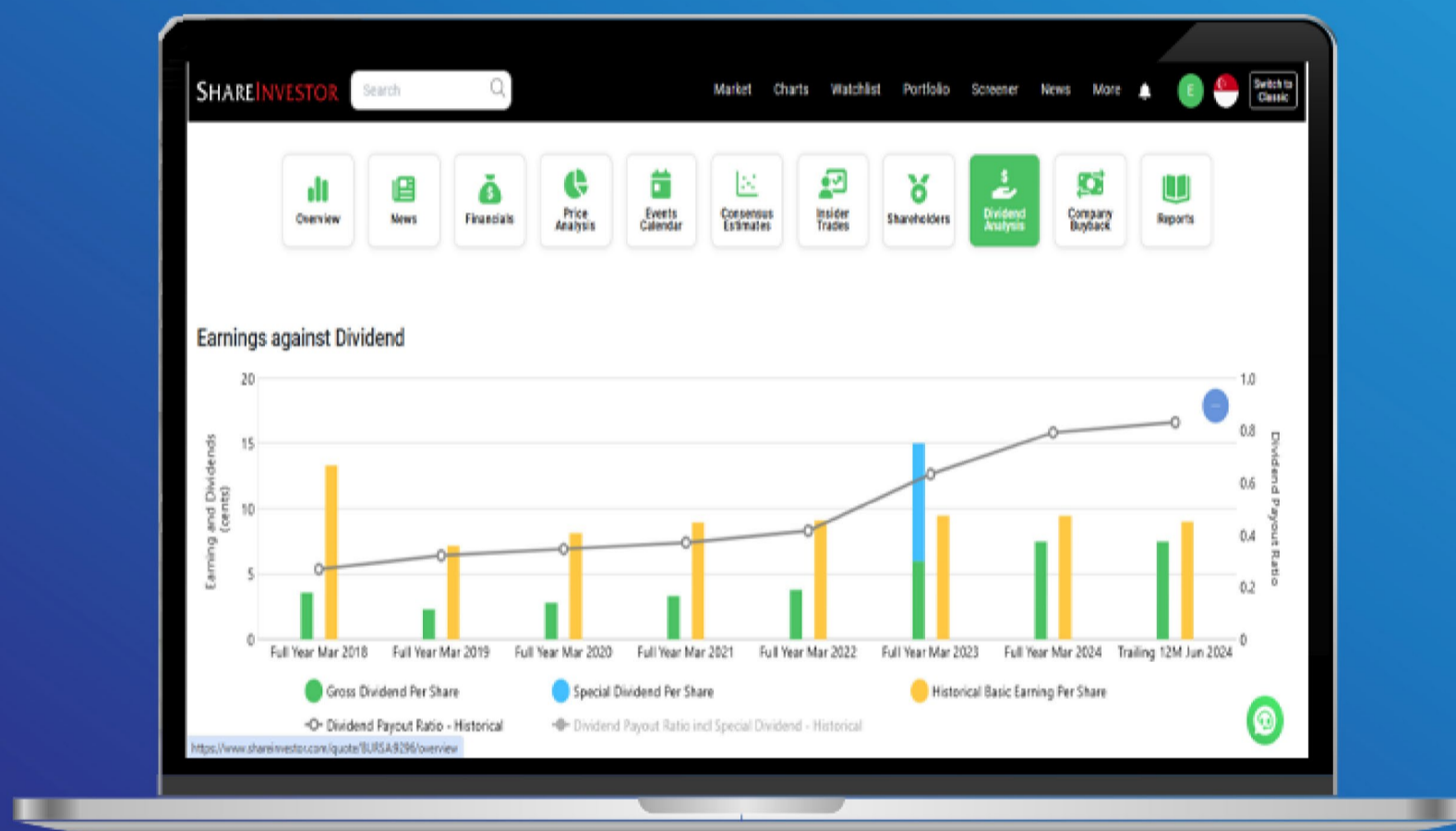


INTERNATIONAL CEMENT GROUPLTD. (KUO.SI)



Period	Dividend Received	Capital Appreciation	Total Shareholder Return	
Short Term Return	5 Days	-	+0.004	+7.02 %
	10 Days	-	-0.005	-7.58 %
	20 Days	-	-0.016	-20.78 %
Medium Term Return	3 Months	-	+0.020	+48.78 %
	6 Months	-	+0.012	+24.49 %
	1 Year	-	+0.043	+238.89 %
Long Term Return	2 Years	-	+0.044	+258.82 %
	3 Years	-	+0.039	+177.27 %
	5 Years	-	+0.003	+5.17 %
Annualised Return	Annualised	-	-	+1.01 %

Tired of low returns? Let's talk high-paying Dividends!



✓ **Top Dividend Picks Right Now**

✓ **Insider Tips** – Advanced strategies for experienced investors

✓ **Easy-to-Follow Tutorial**

Get the most out of dividends, use our Dividend Analysis function –
Click to Watch Our Tutorial Below!

Upgrade Your Dividend Strategy Here



DEFINITION Share price of a company trading at a lower price as compared to its fundamentals (FA) such as financial performance and dividend, allowing it to be attractive to value investors.

CHART GUIDE Total Shareholder Return (TSR) combines share price appreciation and dividend distributions paid to show the total return to the shareholder expressed as a percentage.



ShareInvestor WebPro > Screener > Market Screener (FA & TA) > select SGX > add criteria

A. Criteria

- > click Add Criteria
- Fundamental Analysis Conditions tab (i) Price Earnings Ratio
- Fundamental Analysis Conditions tab >select (ii) CAGR of Net Earnings
- Fundamental Analysis Conditions tab >select (iii) Net Debt To Equity
- Fundamental Analysis Conditions tab >select (iv) Return On Equity (ROE)

B. Conditions

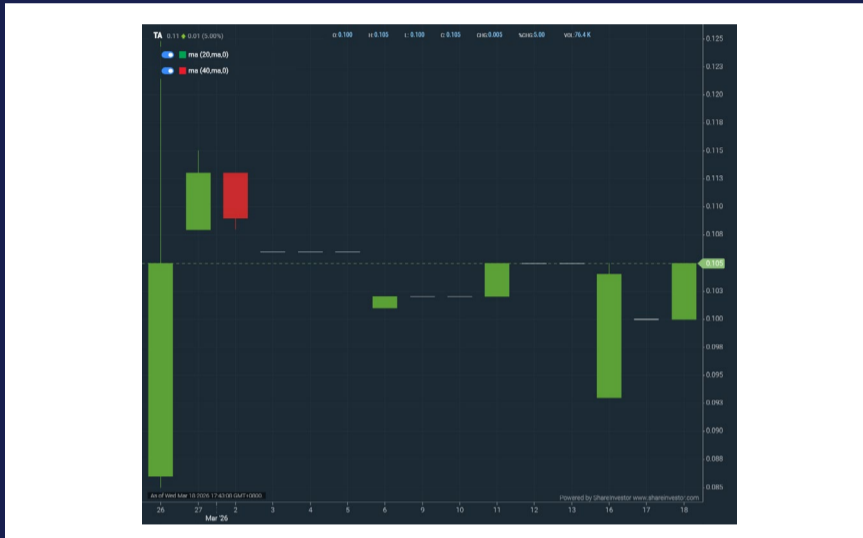
1. Price Earnings Ratio – select (less than) type (15) times now
2. CAGR of Net Earnings – select (more than) type (10) % for the past type (3) financial year(s)
3. Net Debt To Equity – select (less than) type (1) for the past select (1) financial year(s)
4. Return On Equity (ROE) – select (more than) type (10) % for the past select (1) financial year(s)

- > click Save Template > Create New Template type (Value Stock) > click Create
- > click Save Template as > select Value Companies > click Save
- > click Screen Now (may take a few minutes)
- > Mouse over stock name > Factsheet > looking for Total Shareholder Return
- > Mouse over stock name > Charts > click C2 Charts tab



TA CORPORATION LTD (PA3.SI)

ANALYSIS



Period	Dividend Received	Capital Appreciation	Total Shareholder Return
Short Term Return	5 Days	-	+2.94 %
	10 Days	-	-0.94 %
	20 Days	-	+43.84 %
Medium Term Return	3 Months	-	+43.84 %
	6 Months	-	+43.84 %
	1 Year	-	+43.84 %
Long Term Return	2 Years	-	+43.84 %
	3 Years	-	+7.14 %
	5 Years	-	+12.90 %
Annualised Return	Annualised	-	+2.46 %



THAKRAL CORPORATION LTD (AWI.SI)

ANALYSIS



Period	Dividend Received	Capital Appreciation	Total Shareholder Return
Short Term Return	5 Days	-	+1.71 %
	10 Days	-	-4.30 %
	20 Days	-	+5.95 %
Medium Term Return	3 Months	-	+9.20 %
	6 Months	0.030	+17.46 %
	1 Year	0.050	+127.33 %
Long Term Return	2 Years	0.090	+219.11 %
	3 Years	0.135	+221.31 %
	5 Years	0.215	+330.89 %
Annualised Return	Annualised	-	+33.93 %



MSM INTERNATIONAL LTD (510.SI)

ANALYSIS



Period	Dividend Received	Capital Appreciation	Total Shareholder Return
Short Term Return	5 Days	-	-1.72 %
	10 Days	-	-1.72 %
	20 Days	-	-1.72 %
Medium Term Return	3 Months	-	+39.02 %
	6 Months	-	+111.11 %
	1 Year	-	+145.69 %
Long Term Return	2 Years	-	+42.50 %
	3 Years	-	+115.91 %
	5 Years	-	+154.46 %
Annualised Return	Annualised	-	+20.54 %

SHAREINVESTOR[®]

An AlphaInvest Company

Unlock Powerful REITs Insights with ShareInvestor's New REITs Metrics Data & Screener

ShareInvestor provide investors a one-stop platform for comparing Singapore's top REIT metrics. From potential upside and gearing ratios to occupancy rates and rental reversions, this powerful tool gives you a concise yet comprehensive view to identify high-potential REITs. Whether you are a retail investor or a seasoned analyst, ShareInvestor's intuitive interface makes REIT research fast, insightful, and effective.

No	Name	Last Done	Gearing %	Interest Cover Ratio	Occupancy Rate (%)	WADM	Cost of Debt (%)	WALE (Years)	Fixed-Rate Debt %	Rental Reversion Rate (%)
1	AIMS APAC Reit SGX:OSRU	1.310	28.900	2.400	93.600	3.000	4.300	4.400	85.000	20.000
2	Acro HTrust USD SGX:XZL	0.265	42.300	1.700	61.500	2.000	6.400	-	47.500	-
3	BHG Retail Reit SGX:BMGU	0.435	40.200	1.800	94.900	-	5.900	2.800	-	-
4	CDL HTrust SGX:J85	0.775	41.800	2.200	75.000	2.300	3.900	-	33.800	-
5	CapLand Ascendas REIT SGX:A17U	2.640	38.900	3.600	91.500	3.100	3.600	3.800	73.600	11.000
6	CapLand Ascott T SGX:HMN	0.860	39.900	3.200	77.000	3.500	2.900	-	76.000	-
7	CapLand China T SGX:AUBU	0.680	42.600	3.000	97.700	3.900	3.510	1.700	86.000	0.500
8	CapLand India T SGX:CY8U	1.010	41.500	2.500	92.000	2.800	6.000	3.400	84.500	9.000
9	CapLand IntCom T SGX:C88U	2.130	38.700	3.200	96.400	4.200	3.400	3.200	78.000	10.400
10	Daiwa Hse Log Tr SGX:DHLU	0.565	41.100	7.400	92.100	2.500	1.690	6.700	99.300	13.000

**Click to
Access**

INVESTOR ACADEMY



Oil Near US\$120 as War Escalates - Could This Spark a New Offshore Energy Boom

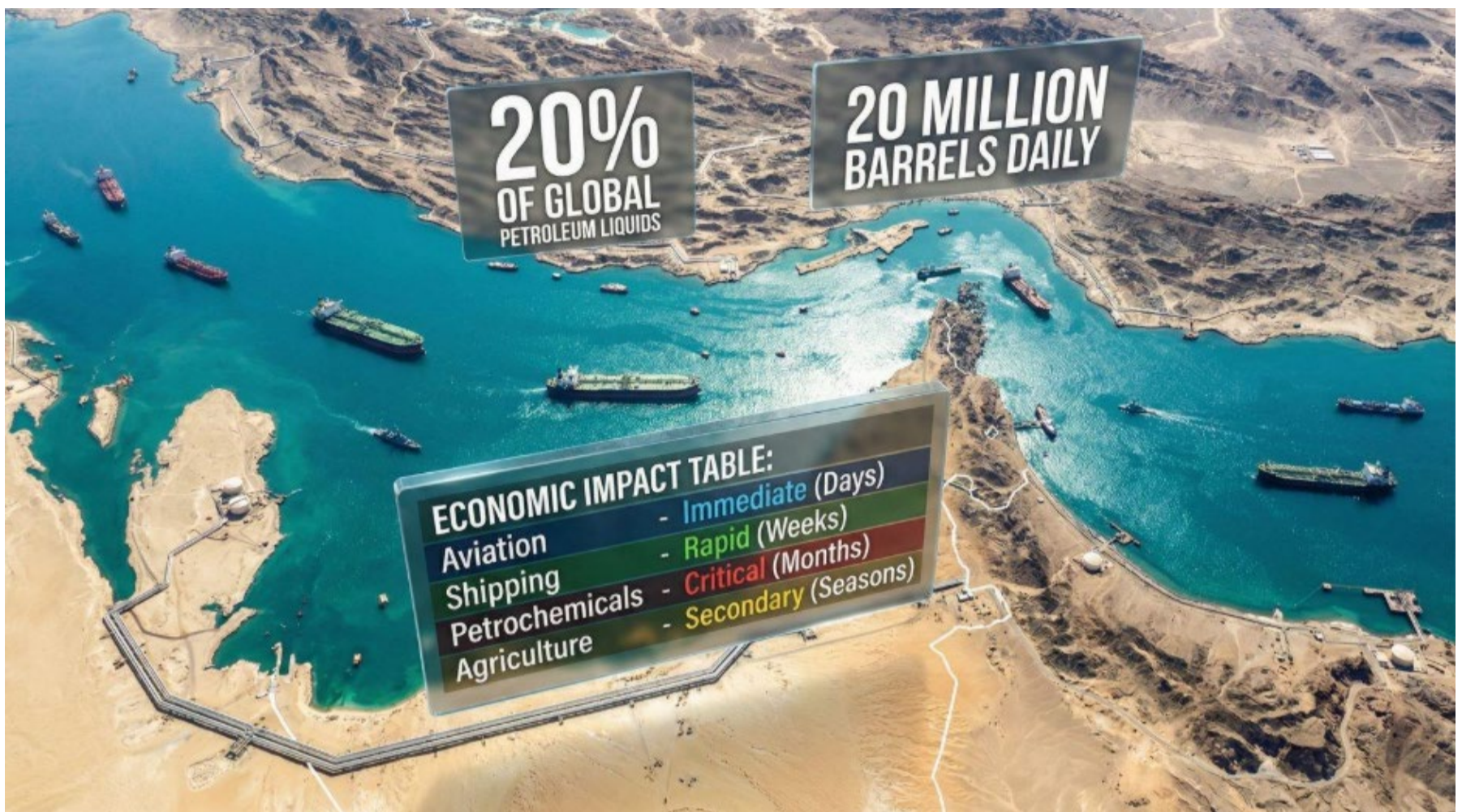
Investor-One / Tue, Mar 17, 8:00 AM



The world woke up on 2 March 2026 to a reality not seen since Russia's invasion of Ukraine in 2022 - oil prices breaking above US\$100 per barrel again. Within days, Brent crude rocketed as high as US\$119.50 a barrel in intraday trade, its single largest daily surge on record.

The trigger? A joint US-Israeli military campaign against Iran, codenamed "Operation Epic Fury," that began on 28 February 2026, assassinating Iran's Supreme Leader and setting off a chain of retaliatory strikes that has sent shockwaves through the global energy complex.

continued... Oil Near US\$120 as War Escalates - Could This Spark a New Offshore Energy Boom



Source: [Discovery Alert](#)

About 20 percent of the world's oil comes from the Gulf region, and most of it is shipped on massive tankers through the Strait of Hormuz — a narrow waterway only 21 nautical miles wide at its narrowest point, through which more than 20 million barrels of oil transit every single day.

When that artery gets threatened, the world feels it immediately — and Singapore, sitting at the crossroads of global trade and energy flows, feels it more acutely than most.

What Is Actually Happening — and Why It Matters

Unlike the truce from last year's 12-day war, the 2026 conflict opened with "decapitation" strikes against Iranian leadership, locking the US and Israel in what analysts are describing as a war of attrition with no clear diplomatic off-ramp.

This is categorically different from past flare-ups. Iran has responded

continued... Oil Near US\$120 as War Escalates - Could This Spark a New Offshore Energy Boom

by widening the battlefield - launching drone and missile strikes across nwg prices sustainably lower, with US crude quickly climbing back above US\$90 per barrel following the announcement.

How Long Could This Last?

This is the question every investor is asking right now, and the honest answer is: nobody knows for certain.

According to Goldman Sachs' head of oil research, Daan Struyven, current pricing reflects traders betting on a disruption lasting roughly four weeks – and if the conflict stretches beyond that, the economic consequences could become dire, with demand destruction required to rebalance the market.

Chatham House economists, meanwhile, note that a more severe multi-month scenario could see Brent approaching US\$130 before moderating in the second half of 2026.

For Singaporean investors, the most prudent working assumption at this point is elevated oil prices for at least the next four to eight weeks.

The base case is leaning towards gradual normalization toward the US\$75-85 range through the second half of 2026 - but with meaningful tail risks to the upside if the Strait remains contested.

This brings us to 4 Offshore and Energy names investors should watch today.

1. Seatrium Limited (SGX: 5E2)

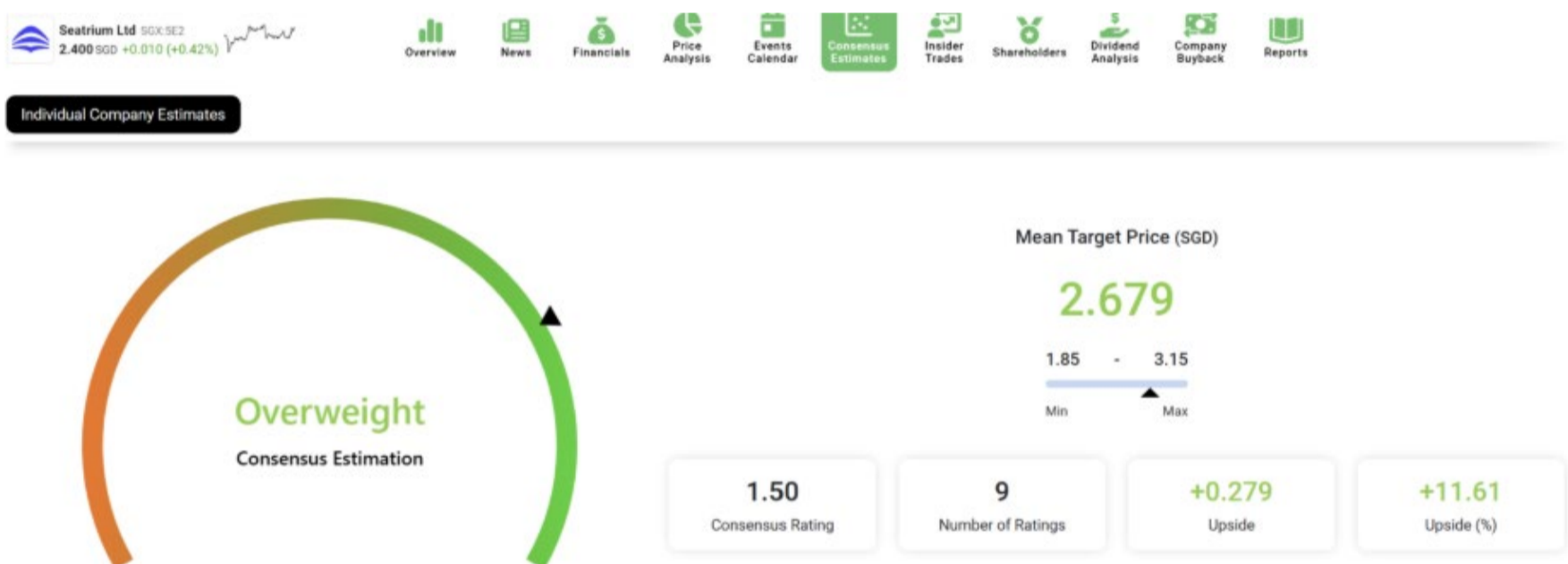
Seatrium is now the dominant Singapore-listed play on the global offshore energy cycle, specializing in rigs, floating production storage and offloading (FPSO) units, vessel construction, and ship repair across yards in Singapore, Brazil, Indonesia, and the UK.

continued... Oil Near US\$120 as War Escalates - Could This Spark a New Offshore Energy Boom

When oil prices increase, offshore exploration and production spending increases in tandem, driving demand for the infrastructure services that Seatrium provides and bolstering its core revenue streams.

Seatrium has also secured FPSO construction contracts P-84 and P-85 from Petrobras, providing near-term revenue visibility regardless of the conflict's duration.

Reflecting its strong industry position, Seatrium has reported robust financials, with trailing twelve-month revenue reaching S\$8.78 billion.



Source: Shareinvestor Pro

In fact, based on the consensus estimates from Shareinvestor Pro, this performance has not gone unnoticed by analysts. A total of 9 analysts gave an Overweight rating and an average price target of S\$2.68, translating into a 11.6% potential upside.

These endorsements highlight growing investor confidence in Seatrium's ability to capitalise on the ongoing upcycle in offshore energy, supported by its improved balance sheet and significant contract wins.

With its net gearing ratio declining to just 0.11 times at end-2024, the company enters this upcycle with a considerably cleaner balance sheet than it had during the last oil boom - giving it real bidding power

continued... Oil Near US\$120 as War Escalates - Could This Spark a New Offshore Energy Boom

for new contracts.

2. Rex International (SGX: 5WH)

Rex International is the most direct upstream oil production play on the SGX for investors seeking leveraged exposure to higher crude prices.

The company holds oil and gas concessions in Oman, Norway, and Benin - all geographies that are benefiting directly from the supply vacuum created by the Middle East disruption as buyers diversify away from Gulf crude.

Rex's EBITDA margin of approximately 52% reflects the cash generative nature of its production assets at current price levels.

As a small-cap counter with a current share price around S\$0.134, Rex offers asymmetric upside in an extended oil price environment but comes with correspondingly higher volatility.

The analyst consensus target of S\$0.32 implies substantial upside from current levels, though investors should be mindful of the binary nature of exploration outcomes and the company's track record of net losses at the group level when non-oil segments weigh in.

3. Singapore Airlines (SGX: C6L)

Singapore Airlines is the most obvious casualty of an oil price shock on the SGX.

Fuel represents approximately 25-30% of SIA's airline operating costs, and although SIA hedges a portion of its jet fuel exposure, an extended price shock erodes the effectiveness of those forward contracts.

The airline is also contending with disrupted Middle East airspace, forcing rerouting of key long-haul services and adding fuel burn costs.

continued... Oil Near US\$120 as War Escalates - Could This Spark a New Offshore Energy Boom



feeqazmir / Shutterstock.com

SIA and Scoot cancel Middle East flights on continued Gulf tensions

Passengers may choose to rebook on alternative flights or claim a full refund.

Singapore Airlines (SIA) and its subsidiary Scoot have announced cancellations of several flights to the Middle East due to the ongoing geopolitical situation in the region.

Source: [SBR.com.sg](https://www.sbr.com.sg)

SIA was already navigating Air India integration losses and softer cargo demand heading into this crisis - the oil shock is an additional headwind it did not need.

Near-term earnings estimates are likely to face downward revisions if Brent remains above US\$90 for more than six weeks.

4. ComfortDelGro (SGX: C52) and Transport-Linked Counters

Ground transport operators including ComfortDelGro face margin compression from higher fuel costs, which may translate into higher fares and lower consumer discretionary spending.

Singapore petrol prices have already surged past S\$3.30 per litre, hitting record highs for 2026, with premium 98-octane potentially approaching S\$4 per litre.

For a company like ComfortDelGro with a large taxi and bus fleet,

continued... Oil Near US\$120 as War Escalates - Could This Spark a New Offshore Energy Boom

even a partial inability to pass on fuel costs to consumers represents a meaningful squeeze on operating margins.

The stock has been a market laggard and may remain under pressure until there is clarity on fuel cost direction.

Conclusion

The US-Israel-Iran conflict has, in just two weeks, fundamentally changed the energy investment calculus for the remainder of 2026.

What began as a geopolitical risk premium has evolved into genuine physical supply disruption - and even optimistic scenarios point to elevated oil prices persisting for at least several more weeks, with meaningful probability of an extended high-price environment if the Strait of Hormuz remains contested.

The deeper lesson for long-term investors is one of energy security. This crisis has compressed what might otherwise have been a five-year offshore investment recovery into what could be a 2-to-3 year supercycle.

To end off, always do your own due diligence, size positions prudently, and remember that geopolitical shocks, by their nature, can reverse as quickly as they escalate.



SHAREINVESTOR[®]
An AlphaInvest Company

Navigating the **New** ShareInvestor
A Step-by-Step Guide

Click to Watch The Webinar 



COMPANY SPOTLIGHT

Leong Guan Holdings Limited Delivers 7% Revenue Growth to S\$40 Million on Normalised profit of S\$1.5 million in First Post-Listing Year

Investor-One / Wed, Mar 4, 11:00 AM



Staple food demand rarely makes headlines. It does not surge with exuberance nor collapse overnight. Instead, it moves steadily, shaped by population needs, food service activity and everyday consumption patterns.

Leong Guan Holdings Limited's financial results for the year ended 31 December 2025 ("FY2025") reflect this steady demand backdrop, set against a transformative year marked by its successful listing on the Catalist Board of the Singapore Exchange on 11 December 2025. ZICO Capital Pte. Ltd. is the Sponsor, Issue Manager and Placement Agent in connection with the IPO.

continued... Leong Guan Holdings Limited Delivers 7% Revenue Growth to S\$40 Million on Normalised profit of S\$1.5 million in First Post-Listing Year

The Group reported revenue of S\$40.0 million, representing a 7% year-on-year increase from S\$37.5 million in FY2024. Growth was primarily driven by stronger demand for trading and OEM products, supported by enhanced sales initiatives and continued focus on customer experience.

Profit before tax stood at S\$0.7 million, while profit after tax was S\$0.5 million. Excluding one-off IPO-related expenses of approximately S\$1.0 million, normalised profit before tax would have been S\$1.7 million and normalised profit after tax S\$1.5 million.

Despite higher operating costs associated with expansion and listing-related professional fees, the Group generated S\$2.9 million in net cash from operating activities, underscoring continued operational discipline and working capital management.

Total equity strengthened 69% to S\$10.3 million following the listing, with net asset value per share increasing to S\$0.10 from S\$0.06 a year earlier. Cash and cash equivalents stood at S\$5.5 million as at 31 December 2025.

A final dividend of 0.3935 Singapore cents per share has been proposed, representing an 80% payout ratio, subject to shareholder approval at the forthcoming Annual General Meeting in April 2026.

In essential consumer sectors, resilience often lies not in rapid expansion, but in disciplined scaling.

Mr Lim Tze Chiang, Executive Director and Chairman of Leong Guan, said, "FY2025 represents a significant milestone for Leong Guan as we successfully completed our listing on Singapore Exchange, while expanding our manufacturing capacity to support the next phase of development and growth.

While these strategic investments and listing-related expenses

continued... Leong Guan Holdings Limited Delivers 7% Revenue Growth to S\$40 Million on Normalised profit of S\$1.5 million in First Post-Listing Year

impacted short-term profitability, they have meaningfully strengthened our operational foundation and capital base, positioning the Group for long-term growth. We remain focused on disciplined execution, operational resilience and the delivery of sustainable long-term value to our shareholders.”



Expanding Capacity to Support Demand

During the year, the Group expanded its manufacturing footprint through new lease agreements at 24 Woodlands Terrace and 7 Woodlands Link. Addition and alteration works were undertaken to enhance production capacity for its soybean-based products, alongside investments in machinery and renewal of its logistics fleet.

As a result, property, plant and equipment increased to S\$14.3 million.

These expansion initiatives led to higher staff costs, depreciation (including lease accounting adjustments) and finance costs. In the

continued... Leong Guan Holdings Limited Delivers 7% Revenue Growth to S\$40 Million on Normalised profit of S\$1.5 million in First Post-Listing Year

near term, such investments elevated the operating cost base. Over time, they are intended to enhance scalability and production efficiency.

In food manufacturing, capacity readiness often precedes revenue acceleration. FY2025 reflects a year of preparation.

Pursuing Growth Through Selective Acquisitions

In addition to organic capacity expansion, the Group has allocated approximately S\$600,000 from its IPO proceeds to pursue acquisitions, joint venture partnerships and strategic alliances.

Management has indicated that it is actively evaluating opportunities, particularly among family-owned food manufacturing businesses facing succession challenges. Such businesses may offer complementary capabilities, established customer relationships and potential operational synergies.

The objective is to accelerate growth beyond organic expansion, broaden product offerings, including ready-to-eat segments and explore entry into selected export markets.

Should larger acquisition opportunities arise, the Group has indicated that it may consider tapping the capital markets for additional funding, subject to market conditions and disciplined return criteria.

Demand Environment Remains Stable

The Group operates within Singapore's staple food manufacturing and distribution sector, supplying fresh noodles and soy bean-based products to more than 2,000 customers across Horeca operators, schools, hospitals, supermarkets, minimarts and e-commerce platforms.

Recent data from Singapore's food and beverage service and retail

continued... Leong Guan Holdings Limited Delivers 7% Revenue Growth to S\$40 Million on Normalised profit of S\$1.5 million in First Post-Listing Year

segments indicate continued year-on-year growth in food caterers, fast food outlets, cafes, food courts, supermarkets and convenience stores. While competitive pressures persist, underlying demand for staple food products remains resilient.

In parallel with rising health awareness, the Group offers wholegrain noodles certified as healthier-choice products by the Health Promotion Board, supported by in-house research and development capabilities.



Managing Costs in a Tight Operating Environment

The operating environment continues to be shaped by manpower constraints and cost pressures. In response, the Group has adopted a technology-driven approach across its production and supply chain processes.

continued... Leong Guan Holdings Limited Delivers 7% Revenue Growth to S\$40 Million on Normalised profit of S\$1.5 million in First Post-Listing Year

Integrated data systems have been implemented to streamline operations, improve inventory tracking, monitor equipment performance and strengthen regulatory compliance.

In essential goods industries, incremental efficiency improvements can meaningfully protect margins over time.

What Investors Should Consider

FY2025 represented a transition year for the Group, marked by balance sheet strengthening following its listing and the expansion of operational capacity. While revenue growth remained positive amid competitive market conditions, profitability was temporarily moderated by one-off IPO expenses and the higher fixed cost base associated with expansion initiatives.

The uplift in equity, strengthened cash position and continued generation of operating cash flow enhance the Group's financial flexibility as it enters its first full year post-listing.

Investors may focus on how efficiently expanded production capacity translates into revenue growth, the extent of margin normalisation in the absence of listing-related expenses, the effectiveness of technology adoption in driving cost optimisation, and management's continued discipline in evaluating merger and acquisition opportunities that could complement organic growth.

Looking Ahead

The staple food industry remains competitive and cost-sensitive, but demand fundamentals are anchored in daily consumption.

Against this backdrop, Leong Guan will continue to focus on strengthening its core manufacturing operations, enhancing product quality, improving operational efficiency and exploring selective

continued... Leong Guan Holdings Limited Delivers 7% Revenue Growth to S\$40 Million on Normalised profit of S\$1.5 million in First Post-Listing Year

merger and acquisition opportunities that may deliver synergistic and accretive value.

In sectors where demand is steady rather than spectacular, long-term value creation often depends on disciplined execution, balance sheet strength and the ability to scale responsibly. FY2025 positions the Group at the start of that next phase.



EXPERIENCE

The New ShareInvestor Website





Advanced Data Visualizations



Comprehensive Portfolio Feature

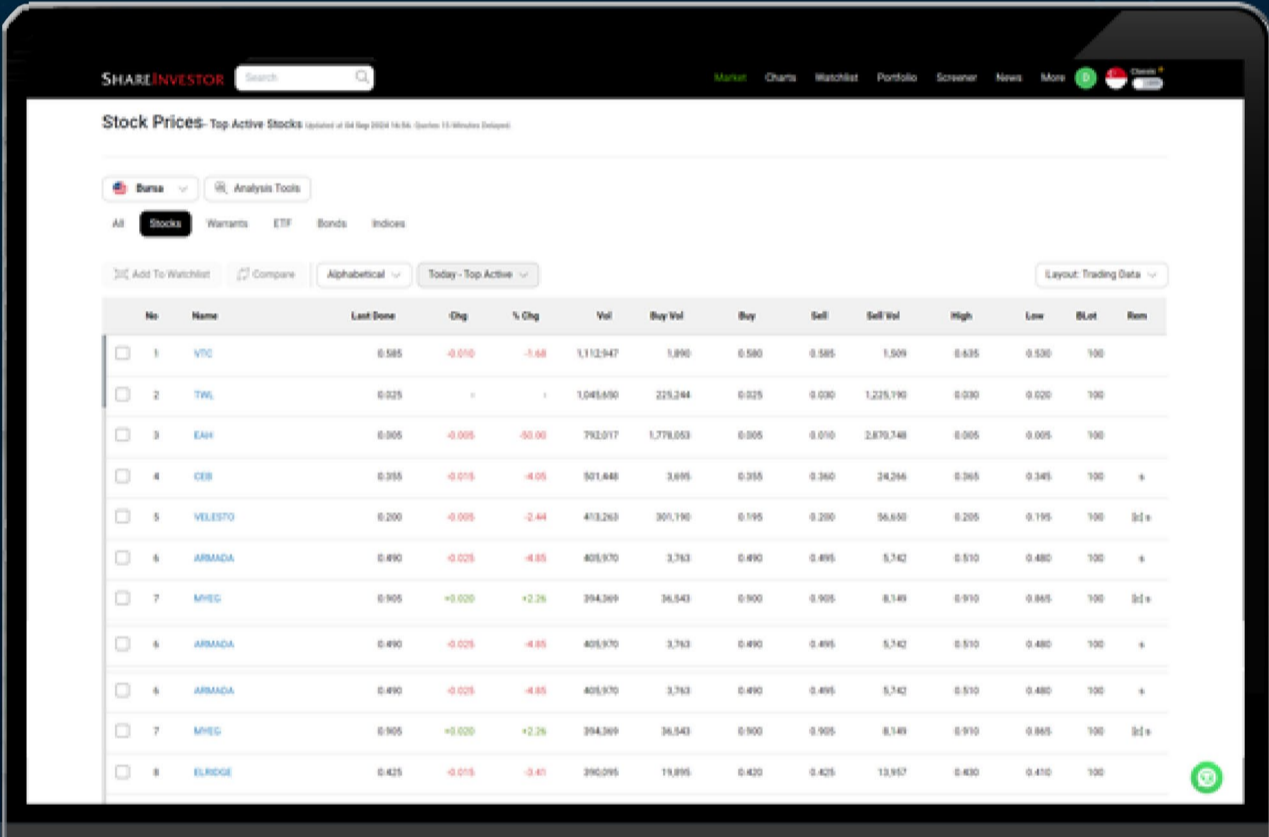


Enhanced Look & Feel



SHAREINVESTOR®
An AlphaInvest Company

Navigating the **New** ShareInvestor A Step-by-Step Guide



The screenshot displays the 'Stock Prices-Top Active Stocks' page on the ShareInvestor website. The page includes a search bar, navigation tabs for 'Bursa', 'Analysis Tools', 'Stocks', 'Warrants', 'ETF', 'Bonds', and 'Indices'. A table lists the top active stocks with columns for No., Name, Last Done, Chg, % Chg, Vol, Buy Vol, Buy, Sell, Sell Vol, High, Low, Blot, and Rem.

No.	Name	Last Done	Chg	% Chg	Vol	Buy Vol	Buy	Sell	Sell Vol	High	Low	Blot	Rem
1	VTC	0.585	-0.010	-1.68	1,112,947	1,890	0.580	0.585	1,509	0.635	0.530	100	
2	TW6	0.025	-	-	1,048,690	225,244	0.025	0.030	1,225,190	0.030	0.020	100	
3	EAH	0.005	-0.005	-50.00	792,017	1,778,053	0.005	0.010	2,870,748	0.005	0.005	100	
4	CEB	0.355	-0.015	-4.05	301,448	3,695	0.355	0.360	24,256	0.365	0.345	100	*
5	VELESTO	0.200	-0.005	-2.44	418,263	301,190	0.195	0.200	56,650	0.205	0.195	100	3d+
6	ARMADA	0.490	-0.025	-4.85	405,970	3,793	0.490	0.495	5,742	0.510	0.480	100	*
7	MHEC	0.905	+0.020	+2.26	394,369	36,543	0.900	0.905	8,149	0.910	0.895	100	3d+
6	ARMADA	0.490	-0.025	-4.85	405,970	3,793	0.490	0.495	5,742	0.510	0.480	100	*
6	ARMADA	0.490	-0.025	-4.85	405,970	3,793	0.490	0.495	5,742	0.510	0.480	100	*
7	MHEC	0.905	+0.020	+2.26	394,369	36,543	0.900	0.905	8,149	0.910	0.895	100	3d+
8	ELRIDGE	0.425	-0.015	-3.41	390,095	19,895	0.420	0.425	13,957	0.430	0.410	100	

Learn more about some of our new platform's exciting features and functions, including:

- ✓ The functionalities of ShareInvestor's Factsheet
- ✓ Key differences in the updated ShareInvestor Factsheet
- ✓ Case study on how to utilize the Factsheet effectively

[Click to Watch The Webinar](#)



INVESTOR-ONE PORTFOLIO

Curated and managed by the Investor-One team under ShareInvestor, this **free-to-access** portfolio will feature local small and mid-cap companies within Singapore Exchange's Mainboard and Catalist.

Join us on the journey and watch as we manage a locally vested portfolio with a **fund of \$100,000**.



ENTER PORTFOLIO 

INVESTOR-ONE

Discover Growing Companies

Investor-One Portfolio

(As at yesterday)

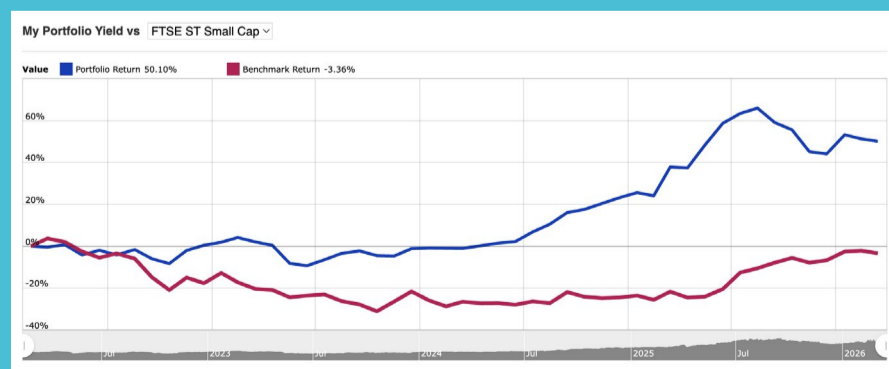
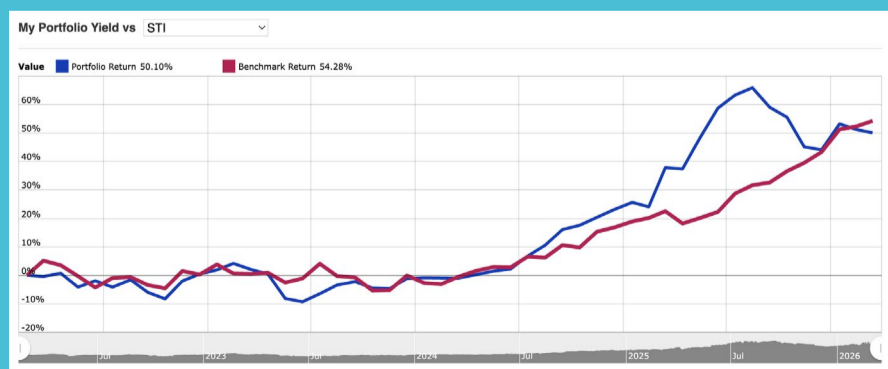
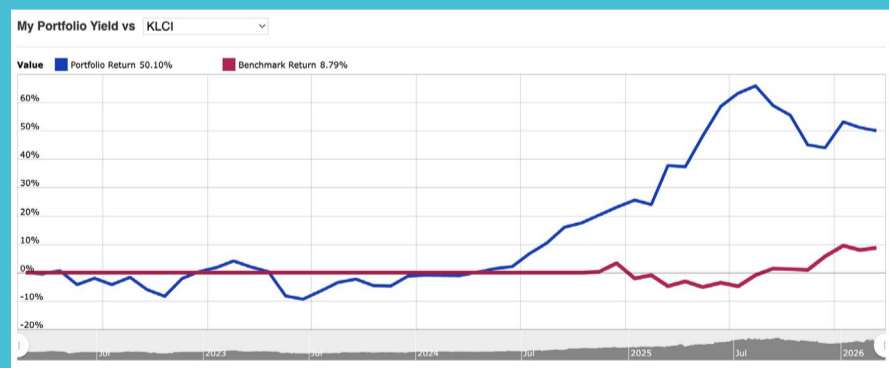
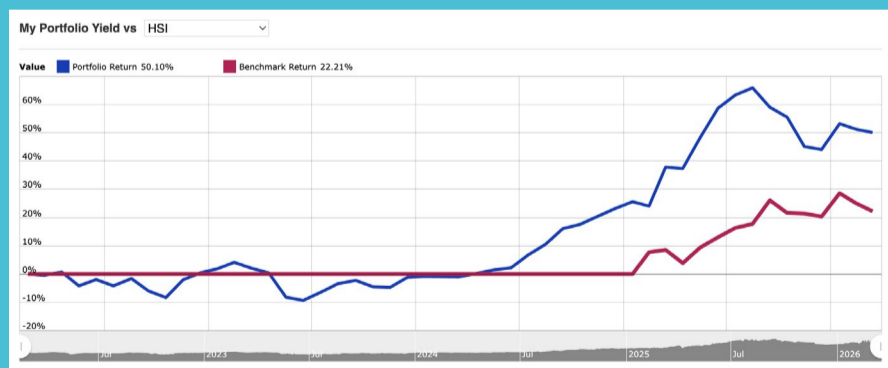
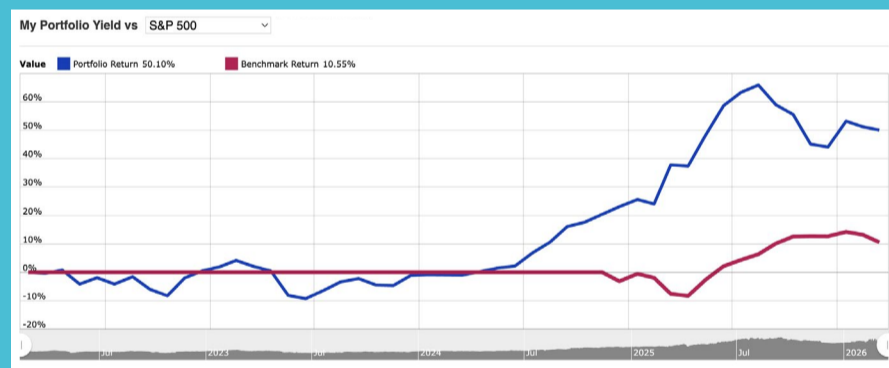
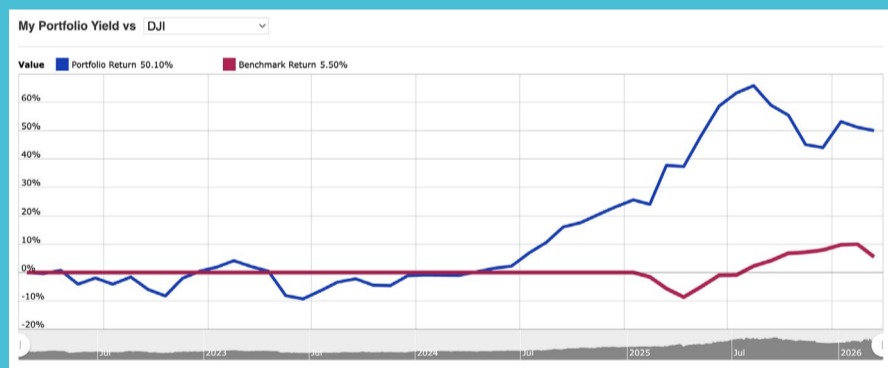
Curated by Investor-One team, this portfolio features growing small and mid cap companies within Singapore Exchange Catalist and Main Board.

The criteria for the companies are selected based on the following metrics, with further evaluation on qualitative factors like management team and growth prospects:

 <p>Market Capitalisation of S\$3 billion and below</p>	 <p>PE Ratio < 15 times OR PB Ratio < 0.5 times</p>
 <p>Net Debt/Equity < 2 times</p>	 <p>Positive Free Cash Flow</p>

80.4% Total Return

YTD(%)	Value	P/L	Dividend	P/L + Dividend	Cash	Currency
7.60	163,903	61,692	18,656	80,348	16,445	SGD



Note: The Portfolio Return indicated in the chart does not include dividend income, as opposed to Total Return that is inclusive of Dividend Income.

INVESTOR-ONE

Discover Growing Companies

Summary

Open Positions Closed Positions

Unrealized P/L ↑ 64,295

Name↑	Weightage	Entry	Last	Chg	Share	P/L	Div	P/L + Div	Cost	Value
Banyan Tree	6.05%	0.65	0.62	0.01 (1.64%)	16000	-480 (-4.62%)	-	-480	10,400	9,920
Centurion	46.06%	0.4	1.51	0.05 (3.42%)	50000	55,500 (277.50%)	3,500	59,000	20,000	75,500
ComfortDelGro	6.24%	1.44	1.46	0.02 (1.39%)	7000	140 (1.39%)	-	140	10,080	10,220
Geo Energy Res	10.35%	0.31	0.525	0.025 (5.00%)	32300	6,945 (69.35%)	2,406	9,351	10,013	16,958
Hyphens Pharma	9.76%	0.3	0.32	-	50000	1,000 (6.67%)	3,870	4,870	15,000	16,000
Nordic	3.17%	0.395	0.52	0.005 (0.97%)	10000	1,250 (31.65%)	700	1,950	3,950	5,200
Raffles Medical	6.22%	0.975	1.02	0.02 (2.00%)	10000	450 (4.62%)	-	450	9,750	10,200
+ UtdHampshReitUSD	12.14%	0.681	0.52	0.005 (0.97%)	30000	-509 (-2.50%)	4,060	3,551	20,415	19,906

Summary

Open Positions Closed Positions

Realized Profit ↓ -2,604

Name↑	Avg Buy	Avg Sell	Shares	Comm	P/L	P/L + Div	Proceeds
HG Metal	0.375	0.34	10000	-	-350	50	3,400
Hock Lian Seng	0.29	0.44	20000	-	3,000	4,110	8,800
HRnetGroup	0.77	0.715	20000	-	-1,100	674	14,300
InnoTek	0.735	0.48	10000	-	-2,550	-2,350	4,800
JEP Hldgs	0.31	0.265	32300	-	-1,454	-1,454	8,560

Transaction

Action	Stock	Price	Shares	Exchange Rate	Comm	Amount	Date↓	Notes
Buy	Banyan Tree	0.650	16000	N/A	0.00	10,400	6 Feb 2026	-
Sell	Hock Lian Seng	0.440	20000	N/A	0.00	8,800	3 Feb 2026	-
Sell	JEP Hldgs	0.265	32300	N/A	0.00	8,560	24 Nov 2025	-
Sell	Kimly	0.385	10000	N/A	0.00	3,850	24 Nov 2025	-
Buy	ComfortDelGro	1.440	7000	N/A	0.00	10,080	24 Nov 2025	-
Buy	Raffles Medical	0.975	10000	N/A	0.00	9,750	24 Nov 2025	-
Sell	HRnetGroup	0.715	20000	N/A	0.00	14,300	2 Jan 2024	-
Buy	Centurion	0.400	50000	N/A	0.00	20,000	2 Jan 2024	-
Buy	UtdHampshReitUSD	0.500	30000	1.36	0.00	15,000	2 Jan 2024	-
Buy	JEP Hldgs	0.310	32300	N/A	0.00	10,013	4 Jul 2023	-
Buy	Geo Energy Res	0.310	32300	N/A	0.00	10,013	13 Mar 2023	-
Sell	HG Metal	0.340	10000	N/A	0.00	3,400	13 Mar 2023	-
Sell	InnoTek	0.480	10000	N/A	0.00	4,800	13 Mar 2023	-
Buy	HRnetGroup	0.770	20000	N/A	0.00	15,400	16 Feb 2022	-
Buy	Kimly	0.400	10000	N/A	0.00	4,000	16 Feb 2022	-
Buy	HG Metal	0.375	10000	N/A	0.00	3,750	16 Feb 2022	-
Buy	InnoTek	0.735	10000	N/A	0.00	7,350	16 Feb 2022	-
Buy	Nordic	0.395	10000	N/A	0.00	3,950	16 Feb 2022	-
Buy	Hyphens Pharma	0.300	50000	N/A	0.00	15,000	16 Feb 2022	-
Buy	Hock Lian Seng	0.290	20000	N/A	0.00	5,800	16 Feb 2022	-
Cash	Deposit	-	-	N/A	-	100,000	15 Feb 2022	-

continued on next page...

Dividend

YTD	TRAILING 12 MONTHS	2025	2024
SGD 881.82	SGD 5340.38	SGD 5344.53	SGD 4564.81

Stock	Ex-Date	Payable Date	Amt	Amt(SGD)	Total
Raffles Medical	11 May 2026	22 May 2026	SGD 0.0300	0.0300	300
Geo Energy Res	05 May 2026	14 May 2026	SGD 0.0010	0.0010	32.30
ComfortDelGro	03 May 2026	13 May 2026	SGD 0.0459	0.0459	321.30
UtdHampshReitUSD	26 Feb 2026	30 Mar 2026	USD 0.0110	0.0141	421.74
UtdHampshReitUSD	26 Feb 2026	30 Mar 2026	USD 0.0120	0.0153	460.08
Geo Energy Res	20 Nov 2025	01 Dec 2025	SGD 0.0010	0.0010	32.30
Centurion	04 Sep 2025	25 Sep 2025	SGD 0.0200	0.0200	1000
Geo Energy Res	20 Aug 2025	29 Aug 2025	SGD 0.0010	0.0010	32.30
UtdHampshReitUSD	20 Aug 2025	26 Sep 2025	USD 0.0123	0.0157	471.58
UtdHampshReitUSD	20 Aug 2025	26 Sep 2025	USD 0.0086	0.0110	329.72
Nordic	19 Aug 2025	04 Sep 2025	SGD 0.0083	0.0083	82.80
Kimly	25 Jun 2025	15 Jul 2025	SGD 0.0100	0.0100	100
Geo Energy Res	20 May 2025	30 May 2025	SGD 0.0025	0.0025	80.75
Nordic	07 May 2025	19 May 2025	SGD 0.0090	0.0090	89.90
Hyphens Pharma	06 May 2025	23 May 2025	SGD 0.0150	0.0150	750
Geo Energy Res	06 May 2025	16 May 2025	SGD 0.0040	0.0040	129.20
Centurion	06 May 2025	26 May 2025	SGD 0.0200	0.0200	1000
Hock Lian Seng	04 May 2025	16 May 2025	SGD 0.0180	0.0180	360
UtdHampshReitUSD	25 Feb 2025	28 Mar 2025	USD 0.0076	0.0097	291.38
UtdHampshReitUSD	25 Feb 2025	28 Mar 2025	USD 0.0129	0.0165	494.59
Kimly	03 Feb 2025	14 Feb 2025	SGD 0.0100	0.0100	100
Geo Energy Res	15 Dec 2024	08 Jan 2025	SGD 0.0020	0.0020	64.60
Centurion	05 Sep 2024	30 Sep 2024	SGD 0.0150	0.0150	750
Geo Energy Res	20 Aug 2024	29 Aug 2024	SGD 0.0020	0.0020	64.60
UtdHampshReitUSD	20 Aug 2024	27 Sep 2024	USD 0.0133	0.0170	509.92
UtdHampshReitUSD	20 Aug 2024	27 Sep 2024	USD 0.0068	0.0087	260.71
Nordic	19 Aug 2024	04 Sep 2024	SGD 0.0085	0.0085	85.30
Kimly	26 Jun 2024	15 Jul 2024	SGD 0.0100	0.0100	100
Geo Energy Res	22 May 2024	31 May 2024	SGD 0.0020	0.0020	64.60
Centurion	08 May 2024	31 May 2024	SGD 0.0150	0.0150	750
Geo Energy Res	08 May 2024	17 May 2024	SGD 0.0060	0.0060	193.80
Nordic	07 May 2024	17 May 2024	SGD 0.0059	0.0059	58.80
Hyphens Pharma	07 May 2024	24 May 2024	SGD 0.0086	0.0086	430
Hock Lian Seng	05 May 2024	17 May 2024	SGD 0.0150	0.0150	300
UtdHampshReitUSD	28 Feb 2024	28 Mar 2024	USD 0.0132	0.0169	506.09
UtdHampshReitUSD	28 Feb 2024	28 Mar 2024	USD 0.0082	0.0105	314.39
Kimly	29 Jan 2024	09 Feb 2024	SGD 0.0112	0.0112	112
Geo Energy Res	20 Nov 2023	29 Nov 2023	SGD 0.0040	0.0040	129.20
HRnetGroup	30 Aug 2023	11 Sep 2023	SGD 0.0187	0.0187	374
Geo Energy Res	28 Aug 2023	06 Sep 2023	SGD 0.0050	0.0050	161.50
Nordic	17 Aug 2023	04 Sep 2023	SGD 0.0100	0.0100	100.10
Hyphens Pharma	16 Aug 2023	31 Aug 2023	SGD 0.0360	0.0360	1800
Kimly	27 Jun 2023	14 Jul 2023	SGD 0.0056	0.0056	56
Geo Energy Res	29 May 2023	08 Jun 2023	SGD 0.0050	0.0050	161.50
Hyphens Pharma	09 May 2023	24 May 2023	SGD 0.0111	0.0111	555
Geo Energy Res	08 May 2023	17 May 2023	SGD 0.0400	0.0400	1292
Hock Lian Seng	07 May 2023	19 May 2023	SGD 0.0100	0.0100	200
Nordic	07 May 2023	17 May 2023	SGD 0.0091	0.0091	90.60
HRnetGroup	03 May 2023	12 May 2023	SGD 0.0187	0.0187	374
Kimly	26 Jan 2023	08 Feb 2023	SGD 0.0112	0.0112	112

This portfolio is managed by Investor-One research team, under ShareInvestor.

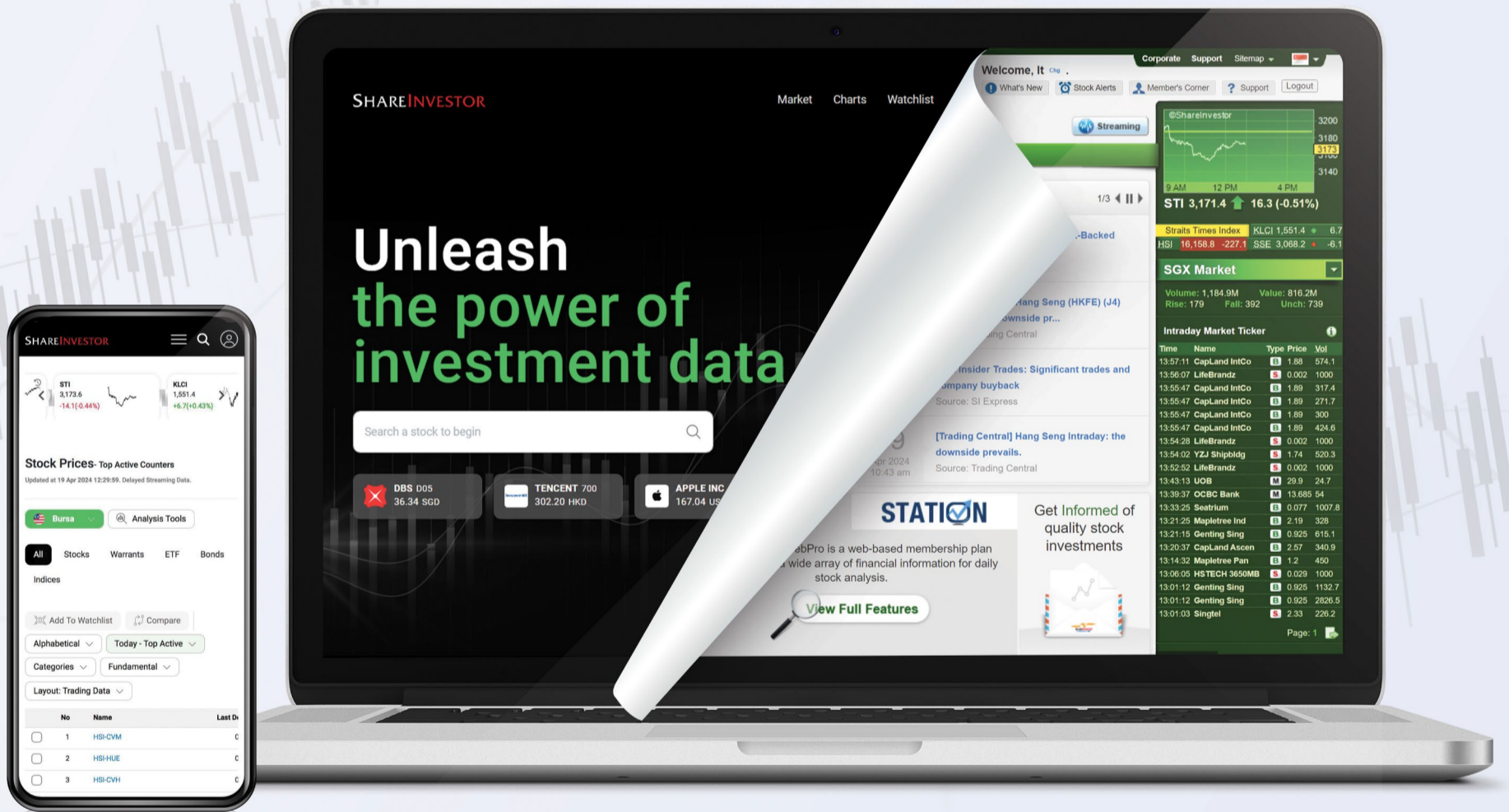
Disclaimer: 1. The Investor-One portfolio is aggregated for educational and illustration purposes only. It is curated based on fixed financial parameters as indicated above. The investor-one team select their stocks solely base on the these fixed parameters. The featured companies are for information only and does not constitute investment advice. 2. The investor-one team is not licensed by any financial authority in Singapore. You should consult your Trading Representative or Financial Advisors before making any financial decisions. 3. Current Price, current value and gain/loss (%) under current portfolio are based on 10 minutes delayed data. 4. Purchase Price and Exit Price are based on EOD price. 5. The views and opinions expressed does not necessarily reflect those of ShareInvestor Pte Ltd nor any related companies of ShareInvestor Pte Ltd.

SHAREINVESTOR®

An AlphaInvest Company

EXPERIENCE

The New ShareInvestor Website



**Advanced
Data
Visualizations**



**Comprehensive
Portfolio
Feature**



**Enhanced
Look &
Feel**



COMPANY SPOTLIGHT

Inside Samurai 2K Aerosol Limited: How Aerosol Paint Technology Is Changing Car and Motorcycle Spraying

Investor-One / Wed, Mar 4, 8:00 AM



Following the record-setting “Samurai's Spray 30 Cars in 3 Days Challenge” in Part 1, attention has turned to the paint technology that enabled car owners, rather than professional painters alone, to spray 30 vehicles within three days. We take a closer look at what makes Samurai 2K Aerosol Limited’s paint distinct and why it has enabled a different approach to car and motorcycle spraying.

Watch the video: [Samurai 2K- Part 2](#)

Part 1: [Samurai 2K Aerosol Sets New Record With 30 Cars Sprayed in 3 Days, Redefining Automotive Repainting in ASEAN & ASIA- Investor-One](#)



continued... Inside Samurai 2K Aerosol Limited: How Aerosol Paint Technology Is Changing Car and Motorcycle Spraying

What makes Samurai 2K different

The technology behind Samurai 2K has received international recognition beyond the recent record-setting event.

On 19 April 2024, Mr Ian Ong, Founder and Chief Executive Officer of Samurai 2K Aerosol Limited, represented the company at the 49th International Exhibition of Inventions in Geneva, Switzerland, where he was awarded a Silver Medal for his post-filled colour-matching aerosol system.



The invention enables users to manually fill customised, pre-matched colour paint into an aerosol can under atmospheric pressure, without the need for specialised or expensive machinery. Once filled, the paint integrates with the propellant already inside the container, producing a ready-to-use 2K aerosol solution that can be applied conveniently across different environments.

continued... Inside Samurai 2K Aerosol Limited: How Aerosol Paint Technology Is Changing Car and Motorcycle Spraying



This innovation underpins Samurai 2K's ability to deliver professional-grade paint performance in a simplified format, forming the technological foundation that made large-scale demonstrations such as the "Samurai's Spray 30 Cars in 3 Days Challenge" possible.

"2K" refers to two-component paint systems, where paint and hardener are combined to trigger a chemical curing process. This produces a finish that is harder, more durable, and more resistant to fuel and UV exposure than conventional air-drying paints.



continued... Inside Samurai 2K Aerosol Limited: How Aerosol Paint Technology Is Changing Car and Motorcycle Spraying

“2K paint has existed for decades in professional workshops,” Mr Ian Ong, Chief Executive Officer of Samurai 2K Aerosol Limited explained. “The real innovation was finding a way to deliver that performance without compressors, spray guns or mixing rooms.”

By integrating the hardener within the aerosol can, Samurai 2K allows users to activate the paint only when needed, simplifying application while retaining chemical durability.

The Role of Tintatek in the Refinishing Platform

Developed over five years, Tintatek enhances Samurai’s refinishing platform by enabling accurate blending of repaired areas without reliance on capital-intensive colour-matching machinery.

The compact system reproduces a broad spectrum of automotive colours from a limited pigment base, supporting localised applications such as scratch correction, panel repainting and partial resprays.

By lowering infrastructure requirements, Tintatek expands applicability across cost-sensitive and infrastructure-light markets. The innovation was recognised with a Silver Medal at the Geneva International Exhibition of Inventions and is now commercially available through authorised distribution channels in selected regional markets.

Together, Samurai 2K’s integrated hardener aerosol system and Tintatek’s colour reproduction capability form a structured refinishing solution designed for both accessibility and professional-grade performance.

A disciplined, repeatable spraying process

Each vehicle at the Samurai’s Spray 30 Cars in 3 Days Challenge” followed a structured sequence from surface preparation and masking to colour application and final clear coating. By removing steps such

continued... Inside Samurai 2K Aerosol Limited: How Aerosol Paint Technology Is Changing Car and Motorcycle Spraying

as paint mixing and gun cleaning, the workflow reduced idle time and allowed multiple vehicles to be processed in parallel workflows.

The approach demonstrated how repainting can be treated as a repeatable operational process, rather than a bespoke workshop craft.

Illustrating the 3-Day Operational Workflow

The structured execution behind the headline number during “Samurai's Spray 30 Cars in 3 Days Challenge” provides further insight into how workflow discipline and paint chemistry worked together under live conditions.

Beyond the record itself, the three-day programme was designed to demonstrate workflow efficiency, coating durability and the commercial viability of Samurai's 2K aerosol systems at scale.

Day 1: Preparation

The foundation of any quality re-spray began with thorough cleaning, sanding and masking, followed by primer application. Proper surface preparation is essential to ensure adhesion, smoothness and long-term durability.

By standardising the preparation workflow across all vehicles, the team maintained consistency while minimising rework risk, a critical factor when operating under compressed timelines.

Day 2: Application

Three colour coats were applied, followed by a protective clear coat. Samurai's integrated hardener technology enabled strong chemical resistance and high-gloss retention, while maintaining manageable flash times between layers.

continued... Inside Samurai 2K Aerosol Limited: How Aerosol Paint Technology Is Changing Car and Motorcycle Spraying

This phase demonstrated that aerosol-based systems, when properly engineered, can deliver professional-grade results with speed and repeatability, even without the infrastructure typically associated with traditional spray booths.

Day 3: Refinement

The final stage included inspection, minor corrections where necessary, and polishing to enhance surface depth and gloss.

The completed vehicles illustrated that productivity need not compromise presentation quality, with finishes comparable to conventional workshop spray jobs in gloss, smoothness and durability.

Cars and motorcycles: different needs, shared impact

For motorcycles, where parts are smaller and frequently exposed to fuel, Samurai 2K's chemical resistance makes it particularly suitable for tanks, fairings and accessories.

In the car segment, the technology has demonstrated its capability to spray an entire vehicle, as evidenced during the record-setting event. Beyond spot repairs, Samurai 2K supports full exterior resprays, as well as express cosmetic programmes, wheel and trim refinishing, and fleet refresh initiatives where speed, consistency and repeatability are prioritised.

What investors can look out for

As Samurai 2K prepares to commercially scale this new aerosol offering, it does so from an established foundation. The Samurai 2K brand has already been serving the DIY motorcycle spraying market for many years, building strong recognition among enthusiasts and

continued... Inside Samurai 2K Aerosol Limited: How Aerosol Paint Technology Is Changing Car and Motorcycle Spraying

modification communities across the region. This existing user base provides credibility and a natural launchpad for the next phase of growth.

Samurai 2K represents an evolution of that legacy by bringing professional-grade two-component paint chemistry into a more accessible aerosol format. While traditional 2K systems have typically been confined to specialised workshops, Samurai's innovation bridges the gap between professional performance and user-friendly application through a structured workflow.

From an investor's perspective, this is a premiumisation and platform expansion story. The company is building on its proven DIY heritage while moving into higher-value applications across both motorcycle and automotive segments. This shift has the potential to lift average selling prices and strengthen margin contribution as adoption deepens.

The proposition is particularly compelling in markets where labour costs are high and DIY culture is encouraged. In developed economies, where workshop repainting can be expensive, Samurai 2K offers a professional-grade alternative with greater cost efficiency. In enthusiast-driven markets, it empowers users to achieve workshop-level results independently, aligning with strong customisation trends and hands-on communities.

As commercialisation progresses, investors may look to the pace of adoption, repeat usage behaviour, pricing resilience and the company's ability to scale distribution responsibly. With structured workflow protocols and strong brand familiarity already in place, Samurai 2K is well positioned to extend its leadership within the aerosol refinishing category.

Its entry into the ASEAN and ASIA Records "Highest Number of Full-Body Car Spray Paints Using Aerosol in a Single Event" serves as a visible execution milestone. More importantly, it reinforces the

continued... Inside Samurai 2K Aerosol Limited: How Aerosol Paint Technology Is Changing Car and Motorcycle Spraying

brand's ambition to reshape expectations around repainting speed, accessibility and performance quality across both motorcycles and cars.

Taken together, Samurai 2K reflects a natural evolution of an established brand into a higher-value refinishing platform. With years of DIY market presence and a clear pathway for technological and commercial expansion, the rollout of this new product presents a confident and forward-looking growth narrative within the automotive aftermarket landscape.



EXPERIENCE

The New ShareInvestor Website





Advanced Data Visualizations



Comprehensive Portfolio Feature



Enhanced Look & Feel



SIGN UP FOR Invest now

INVESTOR ACADEMY provides a weekly tutorial on Investor Education. **COMPANY SPOTLIGHT** gives you valuable insights into small and mid-cap companies with great potential. **SIGN UP** for Investor Education Events.



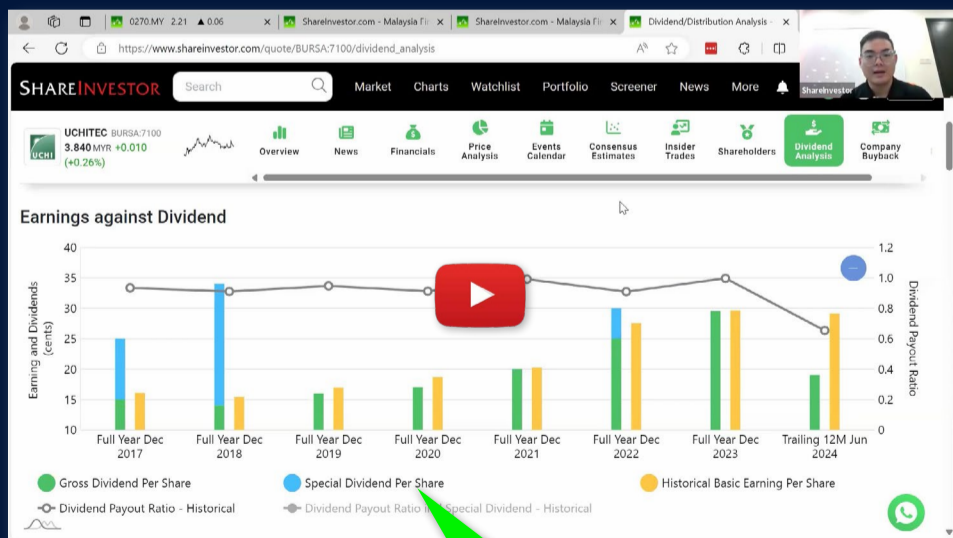
Regular columns include **Market At A Glance** • **Regional Markets** • **Top Dividend / Growth / Value Stocks** • **Investor-One Portfolio** • **Top Significant Insider Activity** • **Investment Books On sale** • **Investor Relations PLC Announcements**



www.shareinvestor.com/investsg

IT'S FREE!

Ultimate Guide to use ShareInvestor



YOU WILL LEARN HOW TO USE:

- Company Financials
- Market Screener
- Company Insider Trades
- Dividend Analysis
- Consensus Estimation
and more...

**Watch
now!**

TOP SIGNIFICANT INSIDER ACTIVITY

Data extracted from WebPro, accurate as at yesterday

Effective Change Date (Notice Date)	Stock Name	Buyer / Seller Name (Classification *)	Security Types ^b	Acquired / (Disposed) ['000]			Price	Closing Price	No. of Shares After Trade ['000]			
				Direct	Deemed	Total			Direct	Deemed	Total	% Held
"12 Mar 2026 (17 Mar 2026)*"	UIBREIT	Amova Asset Management Asia Limited [SSH]	S/U	966		966		0.805	68,694		68,694	5.029
"12 Mar 2026 (17 Mar 2026)*"	UIBREIT	Amova Asset Management International Limited [SSH]	S/U		966	966		0.805		68,694	68,694	5.029
"12 Mar 2026 (17 Mar 2026)*"	MoneyMax Fin	LIM YONG SHENG [Dir/CEO]	OTH	-3,560		-3,560		0.820				
"12 Mar 2026 (17 Mar 2026)*"	MoneyMax Fin	LIM YONG SHENG [Dir/CEO]	OTH	3,560		3,560		0.820				
"12 Mar 2026 (17 Mar 2026)*"	MoneyMax Fin	LIM YEOW HUA [Dir/CEO]	OTH		300	300		0.820				
"12 Mar 2026 (17 Mar 2026)*"	MoneyMax Fin	LIM YEOW HUA [Dir/CEO]	OTH	300	800	1,100		0.820				
"12 Mar 2026 (17 Mar 2026)*"	MoneyMax Fin	LIM YEOW HUA [Dir/CEO]	OTH	-300	-800	-1,100		0.820				
"12 Mar 2026 (17 Mar 2026)*"	MoneyMax Fin	LIM YONG GUAN [Dir/CEO]	OTH	-7,420	-2,780	-10,200		0.820				
"12 Mar 2026 (17 Mar 2026)*"	MoneyMax Fin	LIM YONG GUAN [Dir/CEO]	OTH	15,180	4,800	19,980		0.820				
"12 Mar 2026 (17 Mar 2026)*"	MoneyMax Fin	LIM YONG GUAN [Dir/CEO]	OTH	-15,180	-4,380	-19,560		0.820				
"12 Mar 2026 (17 Mar 2026)*"	MoneyMax Fin	LIM YONG GUAN [Dir/CEO]	OTH	7,420	2,780	10,200		0.820				
"17 Mar 2026 (17 Mar 2026)*"	Asia Vets	ZHANG HAIHUA [SSH]	S/U		8,845	8,845		0.097		37,308	37,308	25.530
"17 Mar 2026 (17 Mar 2026)*"	Asia Vets	Tan Ah Chew [SSH]	S/U	-8,845		-8,845		0.097				
"17 Mar 2026 (17 Mar 2026)*"	Q&M Dental	Dr. Ng Chin Siau [Dir/CEO]	S/U		2,382	2,382		0.565	6,629	528,443	535,071	56.650
"17 Mar 2026 (17 Mar 2026)*"	Q&M Dental	Quan Min Holdings Pte. Ltd. [SSH]	S/U	2,382		2,382		0.565	528,321		528,321	55.940
"12 Mar 2026 (17 Mar 2026)*"	UIBREIT	Sumitomo Mitsui Trust Group, Inc. [SSH]	S/U		74,408	74,408		0.805		74,408	74,408	5.400
"12 Mar 2026 (17 Mar 2026)*"	UIBREIT	Mitsubishi UFJ Financial Group, Inc. [SSH]	S/U		50,107	50,107		0.805		75,016	75,016	5.492
"12 Mar 2026 (17 Mar 2026)*"	UIBREIT	Amova Asset Management Co., Ltd. [SSH]	S/U	5,715	68,694	74,408		0.805	5,715	68,694	74,408	5.400
"16 Mar 2026 (17 Mar 2026)*"	JMH USD	Adam KESWICK [Dir/CEO]	S/U	50		50	USD 76.56	76.220				
"17 Mar 2026 (17 Mar 2026)*"	Wing Tai	Cheng Wai Keung [Dir/CEO]	S/U		83	83		1.630	214	478,815	479,030	62.710
"13 Mar 2026 (17 Mar 2026)*"	NeraTel	CHU, FU-CHUAN [Dir/CEO]	S/U	20		20		0.178	176		176	0.050
"12 Mar 2026 (17 Mar 2026)*"	IHH	EMPLOYEES PROVIDENT FUND BOARD [SSH]	S/U	927		927		2.920	1,128,362		1,128,362	12.770
"16 Mar 2026 (17 Mar 2026)*"	KOREREitUSD	Pacific Oak SOR Properties, LLC [SSH]	S/U	-36,153		-36,153		0.192	28,012		28,012	2.700
"13 Mar 2026 (17 Mar 2026)*"	UIBREIT	Wong Fong Fui [SSH]	S/U	1,000		1,000	0.825	0.825	36,091	259,516	295,607	21.640
"12 Mar 2026 (17 Mar 2026)*"	UIBREIT	Wong Fong Fui [SSH]	S/U	34,091	259,516	293,607	0.880	0.805	34,091	259,516	293,607	21.490
"12 Mar 2026 (17 Mar 2026)*"	UIBREIT	Wong Fong Fui [SSH]	S/U	1,000		1,000	0.807	0.805	35,091	259,516	294,607	21.560
"12 Mar 2026 (17 Mar 2026)*"	UIBREIT	BP-Real Estate Investments Pte. Ltd. [SSH]	S/U	204,881	54,635	259,516	0.880	0.805	204,881	54,635	259,516	19.000
"12 Mar 2026 (17 Mar 2026)*"	UIBREIT	Boustead Singapore Limited [SSH]	S/U		259,516	259,516	0.880	0.805		259,516	259,516	19.000
"12 Mar 2026 (17 Mar 2026)*"	UIBREIT	Boustead Projects Limited [SSH]	S/U		259,516	259,516	0.880	0.805		259,516	259,516	19.000
"12 Mar 2026 (16 Mar 2026)*"	UIBREIT	Morgan Stanley [SSH]	S/U		50,107	50,107		0.805		75,016	75,016	5.492

Disclaimer: The information on this page is provided as a service to readers. It does not constitute financial advice and/or any investment recommendations. Past performance is not indicative of future results. We assume no liability for damages resulting from or arising out of the use of such information. It would be best if you did your own research to make your personal investment decisions wisely or consult a licenced investment advisor.



Protect yourself with the ScamShield Suite



ScamShield Helpline
Call to check if something is a scam



ScamShield app
Check, detect and block scams



scamshield.gov.sg
One-stop portal on scams



ScamShield Alert social channels
Receive the latest information on scams



IR Announcements



OKP Holdings: Secures S\$87.3 Million Contract From LTA For Commuter Infrastructure Works Along The Jurong Region Line.

The contract comprises the design and construction of covered linkways, cycling paths, footpaths and roadworks around the upcoming stations of the Jurong Region Line. 60-month contract commenced in February 2026. New contract uplifts Group's current net construction order book to S\$627.2 million, with projects extending to 2031. redeployed to finance accretive acquisitions, asset enhancement initiatives, redevelopments and debt repayments.

[READ MORE !\[\]\(2027f710942186bc2d02193053a49d40_img.jpg\)](#)

Seatrium: Wins 8th FSRU Conversion From Karpowership, Secures Global LNG-To-Power Leadership.

Seatrium Limited has been awarded a contract by Karpowership, for the conversion of a new Floating Storage Regasification Unit. Karpowership is a longstanding customer for Seatrium, renowned for owning, operating and building the world's largest Powership, floating power plant, fleet. This latest contract award signals a progression of an earlier letter of intent signed between Seatrium and Karpowership announced in August 2025, and marks Seatrium's eighth FSRU conversion project for Karpowership. The LOI scope includes the conversion, life extension and repairs of three LNG carriers into FSRUs, as well as the integration of four new-generation Powerships with an option for two additional units.

[READ MORE !\[\]\(197a904fbefcdda8e9cdad07564658ef_img.jpg\)](#)

Fraser's Property: Appoints Tony Lombardo As Group COO.

Fraser's Property Limited announced the appointment of Tony Lombardo as Group Chief Operating Officer, effective 1 October 2026. Mr Lombardo will report to the Group Chief Executive Officer and will be based in Singapore. In his role as GCOO, Mr Lombardo will work closely with the GCEO and other members of the executive leadership team to advance the Group's strategic priorities under the OneFraser's operating model, strengthening capital execution discipline, enterprise integration and delivery across the Group's diversified multinational portfolio.

[READ MORE !\[\]\(d4ec72aa1569103665b802a7deca0de5_img.jpg\)](#)

Micro-Mechanics: Founder Gives 250K Shares To The Borch Foundation.

Micro-Mechanics (Holdings) Ltd.'s founder and Executive Chairman, Mr Christopher Borch, has made a gift of 250,000 Micro-Mechanics shares to The Borch Foundation. To-date, Mr Borch and his family have donated a total of 8.35 million shares in the Company to The Borch Foundation.

[READ MORE !\[\]\(7ebdaa8f61b993ca25383c4de194b122_img.jpg\)](#)



IR Announcements

[SIGN UP FOR
INVEST WEEKLY](#)

Seatrium: Completes Karimun Yard Divestment.

Seatrium Limited wishes to announce that the divestment of its Karimun Yard located on Karimun Island, Indonesia has been completed on 9 March 2026. This divestment, together with other non-core asset divestments, is expected to deliver over S\$50 million in annualised cost savings upon completion.

[READ MORE](#)

Suntec REIT: MAS Approved Acrophyte Acquisition Of Manager.

ESR Trust Management (Suntec) Limited has been informed by Acrophyte Asset Management Pte. Ltd. that the approval of the Monetary Authority of Singapore for the Acquisition of manager of Suntec REIT has been received and that the target date for the completion of the Acquisition is 17 March 2026.

[READ MORE](#)

CICT: Issuance Of S\$300 Million 2.18% Fixed Rate Green Notes Due 2031.

CMT MTN Pte. Ltd., a wholly-owned subsidiary of CapitaLand Integrated Commercial Trust, has issued S\$300,000,000 2.18 per cent. fixed rate notes due 10 March 2031 to institutional and/or accredited investors. The Notes will mature on 10 March 2031 and will bear interest at a rate of 2.18 per cent. per annum, payable semi-annually in arrear. The Notes have been assigned a rating of "A-" by S&P Global Ratings.

[READ MORE](#)

Yangzijiang: Acquisition Of 10% Interest In Poseidon For US\$825.7 Million.

Seaspan Corporation is an existing, long term and important customer of Yangzijiang Shipbuilding (Holdings) Ltd.. The Acquisition will further strengthen the Group's strategic relationship with Seaspan Corporation and support closer long-term collaboration. The investment also supports vertical integration along the value chain and enhances alignment between vessel demand and the Group's production planning and yard development strategy, which the Board considers important for advancing the Group's interests.

[READ MORE](#)

Yangzijiang Shipbuilding (Holdings) Ltd.
扬子江船业(控股)有限公司



IR Announcements



OKP Holdings: Management Replies To Online Q&A With Investors.

Dear Lim Ping Ping, you wrote: I've observed you are buying investment properties with your cash hoard to expand your rental income. Have you considered other investments like building a dormitory for your workers or acquiring the capability to manufacture your own construction material like cement or steel bars? Ans: Currently, about 60% of our workers live in dormitories owned by the Group. We are in the process of sourcing for factories which we can potentially convert to dormitories to house more of our workers. Our core focus remains our construction and maintenance businesses, areas which provide stable demand and align well with our technical strengths, capabilities and track record. We are not currently considering diversifying into prefab manufacturing or building materials production.

[READ MORE !\[\]\(d974d01b11b626c66975eb75f50ebb11_img.jpg\)](#)

MegaChem: Management Replies To Online Q&A With Investors.

Dear Mr Ng, you wrote: Have your business been affected by the war in the middle east? Ans: Since the onset of the conflict in Iran, most shipping companies have avoided transiting through the Straits of Hormuz, leading to the diversion of our incoming shipments to alternative ports. In terms of our sales, our key markets in the Middle East are primarily the UAE and Saudi Arabia. Operations in these countries continue as usual, and we remain able to fulfil deliveries to our customers there.

[READ MORE !\[\]\(0e4d71a0f52f984bcbe79560c42c925b_img.jpg\)](#)

The Assembly Place: Enters Into Migrant Workers' Accommodation Living Sector With Community-Driven Concept.

Inks agreement with S11 Granuity Management to form a JVC to operate an 886-bed dormitory located at 2 Seletar North Link. JVC to enhance migrant worker accommodation standards by pioneering Singapore's first dormitory anchored under TAP's community-driven approach. Marks TAP's entry into its sixth living sector and the launch of its seventh brand "Habitat", reinforcing its position as Singapore's most diversified community living operator. disciplined capital management with a healthy gearing ratio of 33.4% and no long-term debt refinancing requirements until October 2026.

[READ MORE !\[\]\(acd409b482b1faee1aef93f61f64a532_img.jpg\)](#)

RH PetroGas: Engages AI Firm To Enhance Procurement Governance Oversight.

RH Petrogas Limited has engaged AiRTS Pte. Ltd. to design and build a system to enable a comprehensive governance oversight of the Group's procurement operations by using artificial intelligence, Generative AI and machine learning. AiRTS has previously completed the assessment of the feasibility of GenAI Twin, together with the GenAI and ML technologies with the objective of improving the efficiency and effectiveness of monitoring the Group's procurement activities in a continuous and prompt manner.

[READ MORE !\[\]\(2e86b0f0ed1336df313cb2ef1847d03e_img.jpg\)](#)



IR Announcements



UI Boustead REIT: Attracts Strong Demand For IPO With Offering 3.3 Times Subscribed.

First SGX-ST Mainboard and REIT IPO of 2026, and Singapore's largest year-to-date, raising approximately S\$973.6 million. Cornerstone commitments totalling approximately S\$377.7 million, mainly from global and regional long-only institutional investors and family offices. Robust institutional investor demand for Placement Tranche, with subscription of approximately 3.3x, representing S\$1.9 billion of demand. Strong retail interest, with Singapore Public Offer approximately 2.9x subscribed. Offering represents price to net asset value of 1.0x, with distribution yield of 7.8% for Projection Year 2027.

[READ MORE](#)

Seatrium: Completes Crescent Yard Divestment.

Seatrium Limited wishes to announce that the divestment of its Crescent Yard in Singapore has been completed on 11 March 2026. This divestment, together with other non-core asset divestments, is expected to deliver over S\$50 million in annualised cost savings upon completion.

[READ MORE](#)


UltraGreen.ai: Expands Asia Presence With Regulatory Approvals For IC-Flow Imaging System V2 In India, Thailand, Philippines & Bangladesh.

UltraGreen.ai Limited's IC-Flow Imaging System V2 has received regulatory approval across multiple South and Southeast Asian markets, bringing the system's global regulatory footprint to 45 territories. This development supports the Company's strategy to broaden access to its fluorescence imaging technologies in the Asia Pacific region.

[READ MORE](#)

Rex: Norway, Oman & Germany Production Update For February 2026.

Lime Petroleum AS wishes to announce that for the full month of February 2026, production at the Brage Field, net to LPA, was 9,510 barrels of oil equivalent per day. Masirah Oil Limited announced that gross production in February from the Yumna Field in offshore Block 50 Oman, amounted to an average of 746 stock tank barrels per day over the 28 days of production period. Lime Resources Germany GmbH wishes to announce that for the full month of February 2026, production at the Schwarzbach and Lauben Fields combined, net to LRG, was 44.1 barrels of oil per day.

[READ MORE](#)


IR Announcements



Southern Alliance Mining: 95% Revenue Surge In 1HFY2026 As Newly Acquired Rare Earth Operations Drive Profit Turnaround.

1HFY2026 revenue surged 95.4% y-o-y to RM137.3 million. Achieved financial turnaround with gross profit of RM5.4 million. Completed 40% acquisition of MCRE Resources Sdn. Bhd., Malaysia's first and only operational rare earth elements mine. Chaah Mine's underground operations and promising gold exploration results at Tenggaroh provide strong multi-year growth catalysts.

[READ MORE](#)

UI Boustead REIT: Makes Trading Debut.

UI Boustead REIT had commenced trading at 2.00pm on 12 March 2026 on the Mainboard of the Singapore Exchange Securities Trading Limited under the stock code SGX: UIBU. UI Boustead REIT is the first SGX-ST Mainboard and REIT IPO of 2026. UI Boustead REIT raised approximately S\$973.6 million from the IPO. Cornerstone investors subscribed for S\$377.7 million or 429,181,800 Units. The placement tranche received demand interest of approximately S\$1.9 billion or 2,141,374,666 Units, while the Singapore public offer received demand interest of approximately S\$87.9 million or 99,934,800 Units. The strong demand resulted in the Placement Tranche and Singapore Public Offer being 3.3 times and 2.9 times subscribed respectively.

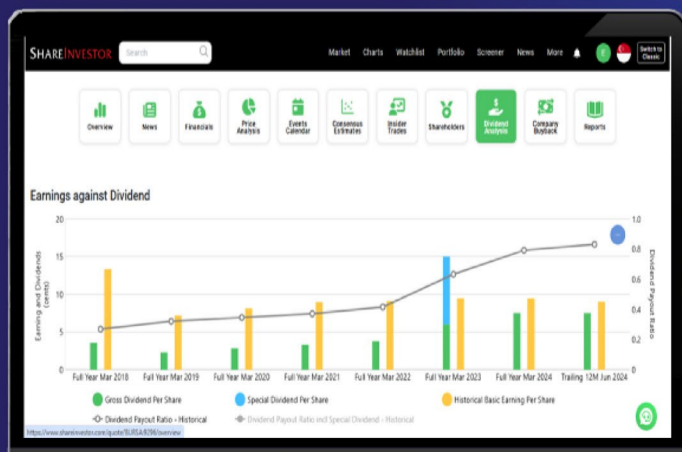
[READ MORE](#)



SHAREINVESTOR®
An AlphaInvest Company

Tired Of Low Returns? Let's Talk High-Paying Dividends!

- ✓ Top Dividend Picks Right Now
- ✓ Insider Tips – Advanced strategies for experienced investors
- ✓ Easy-to-Follow Tutorial



Get the most out of dividends, use our Dividend Analysis function – Click to Watch Our Tutorial Below!

[Upgrade Your Dividend Strategy Here](#)



Don't Miss These Must-Read Investment Gems!

CLICK ON BOOK FOR MORE DETAILS

