

Invest

A Weekly e-Publication by SHAREINVESTOR

ISSUE
178
06 MARCH
2026

Scan or click me



Via email, every Friday

Data and Investing Ideas

COMPANY SPOTLIGHT

Skin in the Game: **3 Stocks** with High Insider Ownership

See more on
pages
10-17

Riverstone Holdings

iFAST Corporation

Nordic Group



PLUS

TOP STOCKS OF THE WEEK

- Dividend Stocks
on page 04
- Growth Stocks
on page 06
- Value Stocks
on page 08

ALSO

Analyst Alert: Recommendation and Consensus on Soon Hock Enterprise Ltd, UltraGreen.ai Ltd, Centurion Corporation Ltd, Nam Cheong Ltd

See more on pages 34-37

INVESTOR
ACADEMY

Why We Are
Adding This Next
50 Stock to Our
Model Portfolio

See more on pages 18-23

MARKET AT A
GLANCE
on page 02

REGIONAL
MARKETS
on page 03

INVESTOR-ONE
PORTFOLIO
on pages 25-28

INSIDER
TRADES
on page 35

IR
ANNOUNCEMENTS
on pages 37-52

SHAREINVESTOR®

An AlphaInvest Company

Invest with Knowledge

MARKETING & SALES

SALES MANAGER

Nigel Lim

ADMIN

Gillian Ong

Dawn Ong

CONTENT

DIRECTOR

Edward Stanislaus

INVESTOR RELATIONS

GROUP MANAGING DIRECTOR

Edward Stanislaus

DIRECTOR

Zhao Yanjing

yanjing.zhao@shareinvestor.com

SENIOR MANAGER

Vivien Ong

vivien.ong@shareinvestor.com

SENIOR QC EXECUTIVE

Poh Lam Huat

lamhuat@shareinvestor.com

ALPHAINVEST HOLDINGS

BOARD OF DIRECTORS

CHAIRMAN

Patrick Daniel

GROUP CEO

Christopher Lee

GROUP COO

Lim Dau Hee

GROUP MD

Shanison Lin

SHAREINVESTOR PTE LTD

151 Lorong Chuan #04-07B
New Tech Park (Lobby G)
Singapore 556741

T (65) 6958 8000

F (65) 6958 8044

E admin@shareinvestor.com

W www.ShareInvestor.com

Advertise with us

Disclaimer:

The services information and data made available on or accessible via this newsletter including facts, views, advice, analyses, opinions and recommendations of individuals and organisations are for general information purposes only.

It is not intended as investment advice and must not be relied upon as such. ShareInvestor Pte Ltd and its third party information providers are not giving or purporting to give or representing or holding themselves out as giving financial, investment, tax, legal and other professional advice.

Advice from a securities professional is strongly advised.

Market at a Glance

Over 5 trading days as at yesterday

www.shareinvestor.com

market data at your fingertips



ShareInvestor WebPro (www.shareinvestor.com)

Prices > Stock Prices > SGX > click Stocks tab

1. mouse over Ranking > select Top Active > mouse over Column Layout > select Edit Customs > select Name > select Volume > select Last Done Price > mouse over Column Layout > select Custom
2. mouse over Ranking > select Top Turnover > mouse over Column Layout > select Edit Customs > select Name > select Last Done Price > select Value > mouse over Column Layout > select Custom
3. mouse over Ranking > select Top Gainers (Over 5 Trading Days) > mouse over

Column Layout > select Edit Customs > select Name > select Last Done Price > select 5 Days Change > select 5 Days % Change > mouse over Column Layout > select Custom

4. mouse over Ranking > select Top Losers (Over 5 Trading Days)
5. mouse over Ranking > select Top % Gainers (Over 5 Trading Days)
6. mouse over Ranking > select Top % Losers (Over 5 Trading Days)

Singapore Top Actives

(as at yesterday)

Name	Last Done	Volume
Rex Intl	0.176	114,321.9
MarcoPolo Marine	0.156	66,380.5
Addvalue Tech	0.079	63,706.7
Genting Sing	0.680	60,451.2
Geo Energy Res	0.450	45,740.0
Intl Cement	0.059	44,037.5
HSI 27800MBeCW260429	0.064	43,949.5
HSI 28800MBeCW260429	0.030	37,924.7
HSI 29800MBeCW260429	0.021	32,025.9
ThaiBev	0.440	29,436.7

Top Gainers

(over 5 Trading days as at yesterday)

Name	Last Done	5 Days Chg
GLD SG\$	606.700	3.200
PetroCH 5xLongSG270427	7.160	1.950
HSTECH 7xShortSG280120	3.210	1.310
Xiaomi 5xShortSG261223	4.780	1.310
AvePoint	14.040	1.160
Xiaomi 3xShortSG271125	10.260	1.110
AEM SGD	3.120	1.090
Meituan 5xShortSG280120	2.460	1.015
NC22300W 720801	118.000	1.000
NX22100W 320801	100.000	1.000

Top Losers

(over 5 Trading days as at yesterday)

Name	Last Done	5 Days Chg
SS SPDR DJIA USD	483.900	-8.100
SS SPDR S&P500 USD	684.020	-4.480
JMH USD	76.910	-3.490
Keppel 5xLongSG270706	4.940	-2.960
GLD US\$	474.100	-2.600
DBS	55.120	-2.570
Amundi MSIndia Sw US\$	29.860	-2.340
Alibaba 3xLongSG271125	3.920	-2.180
XT MSCHINA S\$	23.900	-1.730
Amundi EM Mkt Sw US\$	18.610	-1.560

Singapore Top Turnover

(as at yesterday)

Name	Last Done	Value
DBS	55.120	370,203,853
OCBC Bank	20.840	194,791,928
UOB	36.010	178,190,078
Singtel	4.960	137,477,111
YZJ Shipbldg SGD	4.220	113,705,132
ST Engineering	10.840	87,550,277
Keppel	12.220	83,829,428
SIA	6.680	77,981,909
CapLand IntCom T	2.390	67,032,661
SGX	17.770	61,779,212

Top % Gainers

(over 5 Trading days as at yesterday)

Name	Last Done	5 Days % Chg
HSTECH 7xShortUB261130	0.009	200.00
HSTECH 5xShortSG261105	0.073	135.48
Alibaba 5xShortSG270907	0.325	113.82
HSI 25200MBePW260330	0.117	101.72
HSI 24200MBePW260330	0.068	100.00
UOB MB ePW260630	0.036	89.47
Sunny 5xShortSG260908	0.017	88.89
PopMart MB ePW260602	0.029	81.25
NKY 52000MBePW260612	0.143	81.01
HSTECH 7xShortSG270309	0.320	79.78

Top % Losers

(over 5 Trading days as at yesterday)

Name	Last Done	5 Days % Chg
HSI 29200MBeCW260330	0.003	-88.89
HSI 30200MBeCW260330	0.003	-78.57
HSI 28200MBeCW260330	0.013	-77.97
DBS MB eCW260330	0.011	-75.56
SIA MB eCW260330	0.007	-74.07
SATS MB eCW260330	0.004	-73.33
HSI 31600MBeCW260429	0.009	-70.97
HSI 28800MBeCW260429	0.030	-66.67
HSI 29800MBeCW260429	0.021	-66.67
Alibaba MB eCW260703	0.030	-65.12

Regional Markets

Over 5 trading days



ShareInvestor WebPro (www.shareinvestor.com)

1. Price > Stock prices
2. select Market: Bursa / HKEX / NYSE / NASDAQ (one bourse at a time)
3. select Stocks Tab
4. select Ranking Top Gainers or Top Losers (Over 5 Trading Days)
5. Mouse over Column Layout > select Edit Customs > select Name > select Last Done Price > select 5 Days Change > select 52 Weeks High > select 52 Weeks Low > Mouse Over Column Layout > select Custom

BURSA (RM)

Top Gainers

Name	Last Done	5 Days Change	52 Weeks High	52 Weeks Low
PETRONM	4.790	0.630	5.000	2.950
HENGYUAN	1.590	0.620	1.739	0.720
HUMEIND	3.860	0.450	3.920	2.400
VSTECs	4.970	0.430	4.860	2.453
UMSINT	4.560	0.420	5.080	3.344

Top Losers

Name	Last Done	5 Days Change	52 Weeks High	52 Weeks Low
NESTLE	108.100	-2.400	122.200	61.800
HEIM	22.880	-1.700	28.680	19.800
ALLIANZ-PA	21.180	-1.320	23.340	16.680
HLIND	17.580	-1.220	19.300	12.360
HLFG	20.840	-1.160	23.100	15.700

HONG KONG (HKD)

Top Gainers

Name	Last Done	5 Days Change	52 Weeks High	52 Weeks Low
NUOBIKAN (2635)	526.000	87.800	569.500	310.000
ZHIDA TECH (2910)	54.750	54.698	56.000	43.000
JIAXIN INTL RES (3858)	134.100	48.550	133.100	22.800
MINIMAX-WP (100)	800.000	46.500	980.000	220.000
MINTH GROUP-2K (2921)	42.220	41.920	42.220	0.265

Top Losers

Name	Last Done	5 Days Change	52 Weeks High	52 Weeks Low
TRMSCIKOREA (2848)	1,336.500	-191.000	1,611.000	460.400
X TRNIFTY50 (3015)	1,996.500	-105.500	2,266.000	1,887.500
LAOPU GOLD (6181)	640.000	-93.500	1,108.000	533.000
PATEO (2889)	206.200	-67.800	288.800	130.100
TRMSCITAIWAN (3036)	805.600	-63.400	875.000	397.400

NYSE (USD)

Top Gainers

Name	Last Done	5 Days Change	52 Weeks High	52 Weeks Low
Fair Isaac	1,464.010	75.570	2,217.600	1,193.095
AutoZone	3,717.000	57.000	4,388.110	3,210.720
ASA Gold	78.180	56.370	22.779	13.180
Northrop Grumman	753.840	42.940	774.000	450.130
WW Grainger	1,148.460	42.940	1,218.630	893.990

Top Losers

Name	Last Done	5 Days Change	52 Weeks High	52 Weeks Low
Berkshire Hathaway A	730,707.010	-22,542.990	812,855.000	685,150.000
Biglari Holdings A	1,817.830	-210.660	2,513.000	999.010
NVR	7,251.270	-182.870	8,618.280	6,562.850
US Bancorp DO-A	778.720	-97.050	908.000	830.000
Mettler-Toledo	1,286.660	-90.560	1,525.170	946.690

NASDAQ (USD)

Top Gainers

Name	Last Done	5 Days Change	52 Weeks High	52 Weeks Low
QGLDI/UBSN 33	179.795	172.645	8.790	7.060
Elbit Systems	904.000	138.710	886.270	343.000
Strategy Pfd	100.100	98.130	3.250	0.398
UBS AG ETRACS Silver Shares ETP CS NQ Slv	96.250	92.385	5.570	3.590
Invesco QQQ	609.950	88.210	539.150	413.070

Top Losers

Name	Last Done	5 Days Change	52 Weeks High	52 Weeks Low
Horzn Nasdaq-100 Dfn	26.604	-985.064	1,060.711	828.610
REX IncmMx Optn Strgy ETF	12.651	-318.709	365.860	219.970
MongoDB A	249.930	-86.680	444.720	140.780
Monolithic Power Systems	1,099.020	-81.110	1,256.220	438.860
Inv RAFI US 1500	48.551	-71.789	139.660	76.910

Dividend Stocks

Price & Total Shareholder Return (as at yesterday)

DEFINITION

Company is paying out dividend with low or moderate leverage.

CHART GUIDE

Total Shareholder Return (TSR) combines share price appreciation and distributions paid to show the total return to the shareholder expressed as a percentage.



ShareInvestor WebPro > Screener > Market Screener (FA & TA) > select SGX > add criteria

A. Criteria

- > click Add Criteria
- Fundamental Analysis Conditions tab >select (i) Dividend Yield
- Fundamental Analysis Conditions tab >select (ii) Dividend Payout (Historical)
- Fundamental Analysis Conditions tab >select (iii) Total Debt To Equity
- Fundamental Analysis Conditions tab >select (iv) Total Shareholder Returns

- Fundamental Analysis Conditions tab >select (v) Total Shareholder Returns
- Fundamental Analysis Conditions tab / >select (vi) CAGR of Dividend Per Share
- Fundamental Analysis Conditions tab >select (vii) CAGR of Dividend Per Share

B. Conditions (Criteria Filters)

1. Dividend Yield - select (more than) type (1) % for the past select (1) financial year(s)
2. Dividend Payout (Historical) - select (between) type (0.5) to type (1) times for the past select (1) financial year(s)
3. Total Debt to Equity - select (less than) type (1) for the past select (1) financial year(s)
4. Total Shareholder Return - select (more than) type (5) % for the past select (3) financial year(s)
5. Total Shareholder Return - select (more than) type (5) % for the past select (5) financial year(s)

6. CAGR of Dividend Per Share - select (less than) type (30) % for the past select (5) financial year(s)
 7. CAGR of Dividend Per Share - select (more than) type (1) % for the past select (5) financial year(s)
- > click Save Template > Create New Template type (Dividend Companies) > click Create
 - > click Save Template as > select Dividend Companies > click Save
 - > click Screen Now (may take a few minutes)
 - > Sort By: Select (Dividend Yield) Select (Desc)
 - > Mouse over stock name > Factsheet > looking for Total Shareholder Return



FIRST RESOURCES LIMITED (EB5)

ANALYSIS

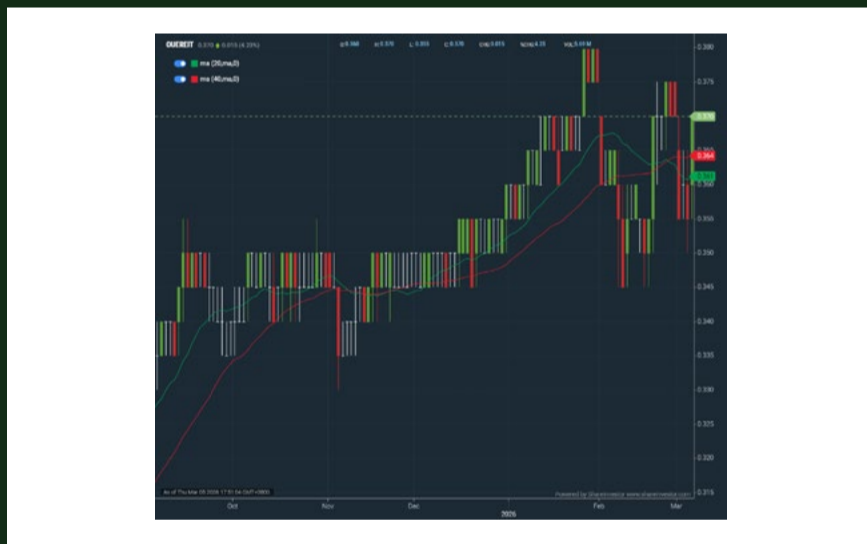


Period	Dividend Received	Capital Appreciation	Total Shareholder Return	
Short Term Return	5 Days	-	+0.100	+4.31 %
	10 Days	-	+0.160	+7.08 %
	20 Days	-	+0.300	+14.15 %
Medium Term Return	3 Months	-	+0.330	+15.79 %
	6 Months	-	+0.730	+43.20 %
	1 Year	0.108	+0.800	+56.05 %
Long Term Return	2 Years	0.180	+1.070	+92.59 %
	3 Years	0.325	+0.870	+77.10 %
	5 Years	0.434	+0.990	+99.58 %
Annualised Return	Annualised	-	-	+14.82 %



OUE REIT (TSOU)

ANALYSIS

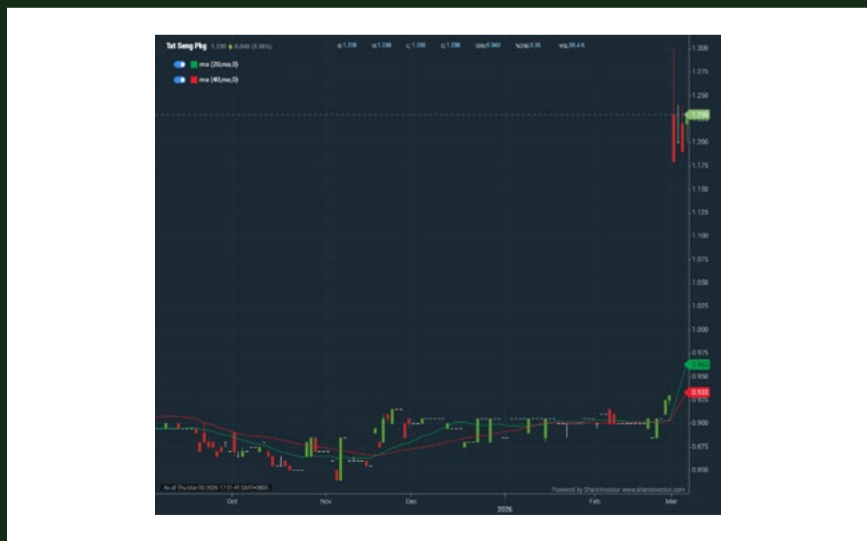


Period	Distribution Received	Capital Appreciation	Total Shareholder Return	
Short Term Return	5 Days	-	-0.005	-1.33 %
	10 Days	-	+0.020	+5.71 %
	20 Days	-	+0.005	+1.37 %
Medium Term Return	3 Months	0.013	+0.020	+9.40 %
	6 Months	0.013	+0.035	+14.33 %
	1 Year	0.022	+0.095	+42.55 %
Long Term Return	2 Years	0.043	+0.110	+58.85 %
	3 Years	0.064	+0.035	+29.55 %
	5 Years	0.111	-0.005	+28.27 %
Annualised Return	Annualised	-	-	+5.10 %



TAT SENG PACKAGING GROUP LTD (T12)

ANALYSIS



Period	Dividend Received	Capital Appreciation	Total Shareholder Return	
Short Term Return	5 Days	-	+0.325	+38.91 %
	10 Days	-	+0.330	+36.67 %
	20 Days	-	+0.320	+35.16 %
Medium Term Return	3 Months	-	+0.325	+35.91 %
	6 Months	0.010	+0.330	+37.78 %
	1 Year	0.040	+0.430	+58.75 %
Long Term Return	2 Years	0.090	+0.530	+88.57 %
	3 Years	0.140	+0.545	+100.00 %
	5 Years	0.215	+0.495	+96.60 %
Annualised Return	Annualised	-	-	+14.48 %

INVESTSG

Discover top investing and trading ideas for Singapore Market



Investment Portfolio

Sample model portfolios tailored to different risk levels and investment goals.



Community

Connect with fellow investors, share market insights, and stay updated with the latest discussions.



Research Hub NEW

All-in-one place to access market insights, stock analyses, and investment research.



Stock Calendar COMING SOON

Stay updated on upcoming earnings, dividends, IPOs, and other key company events.

JOIN INVESTSG TODAY!

Gain insights including access to top industry leaders' investment portfolios and many more!

Scan or click me



KennyLoh ✓
Professional Investor

REITirement Dividend investing

Since Inception 01/03/2025

Follow

14.94%

↑↓

P/L since inception ⓘ

17.73%

📊

Year to date ⓘ

Top current holdings

	Current position
	Return (%)
TSOU OUE REIT	\$1,387.50 27.78%
AJBU KEPPEL DC REIT	\$1,269.00 25.00%
MXNU ELITE UK REIT	\$1,217.40 24.71%

[View Portfolio >](#)

dancs ✓
Professional Investor

Active Investing (Small-Mid Cap) Swing trading

Since Inception 01/04/2025

Follow

12.12%

↑↓

P/L since inception ⓘ

49.35%

📊

Year to date ⓘ

Top current holdings

	Current position
	Return (%)
P8Z BUMITAMA AGRI LTD.	\$4,595.08 56.00%
SWV ASIAPHOS LIMITED	\$598.02 18.11%
RE4 GEO ENERGY RESOURCES LIMITED	\$3,488.00 17.43%

[View Portfolio >](#)

WilliamLiun... ✓
Professional Investor

Left-Side and Right-Side Trading Swing trading

Since Inception 03/06/2025

Follow

10.58%

↑↓

P/L since inception ⓘ

12.92%

📊

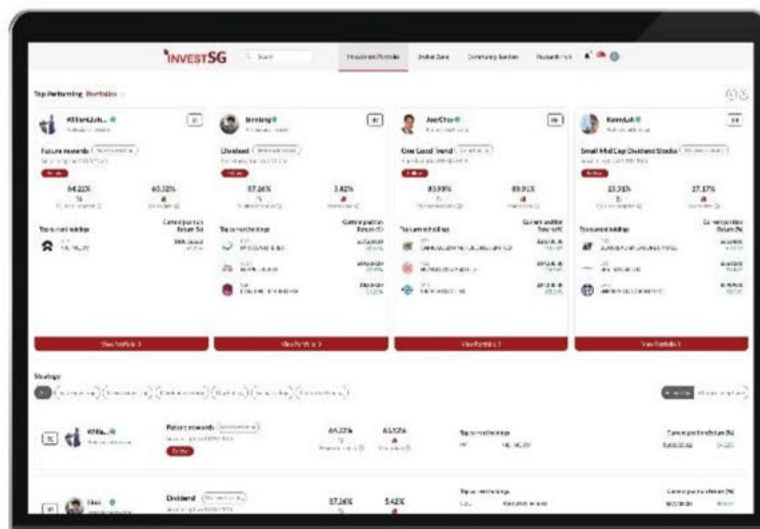
Year to date ⓘ

Top current holdings

	Current position
	Return (%)
OYY PROPNE LIMITED	\$7,320.00 70.93%
BS6 YANGZIJIANG SHIPBLDG HLDGS LTD	\$5,720.00 53.06%
H22 HONG LEONG ASIA LTD.	\$8,050.00 45.10%

[View Portfolio >](#)

www.InvestSG.Asia



DEFINITION Company revenue is growing and making good quality of earnings with positive Free Cash Flow.

CHART GUIDE Total Shareholder Return (TSR) combines share price appreciation and distributions paid to show the total return to the shareholder expressed as a percentage.



ShareInvestor WebPro > Screener > Market Screener (FA & TA) > select SGX > add criteria

A. Criteria

1. Fundamental Analysis Conditions tab >select (i) Free Cash Flow, (ii) Revenue Growth, (iii) Gross Profit (Earnings) Margin, (iv) Quality of Earnings, (v) Total Shareholder Returns, > click Add Criteria
2. Fundamental Analysis Conditions tab >select (vi) Total Shareholder Returns > click Add Criteria

B. Conditions (Criteria Filters)

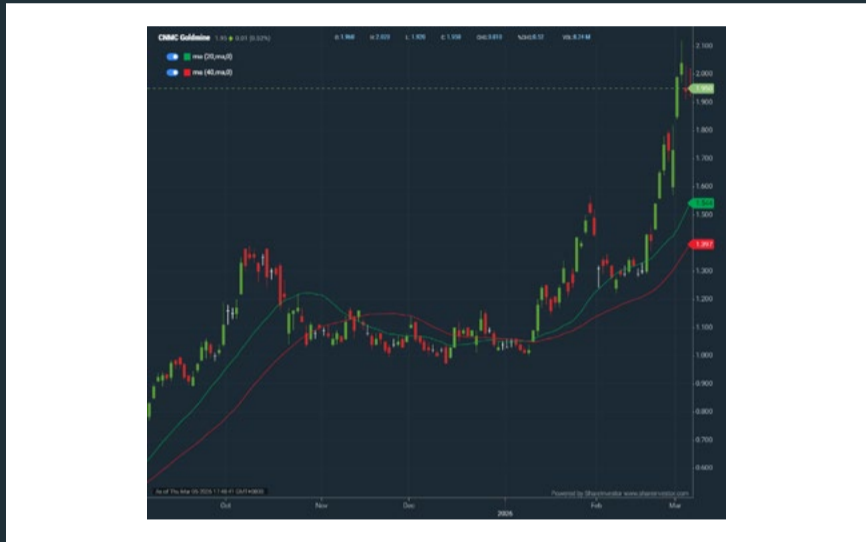
1. Free Cash Flow – select (more than) type (1) for the past select (1) financial year(s)
 2. Revenue Growth – select (more than) type (1) for the past select (1) financial year(s)
 3. Gross Profit (Earnings) Margin - select (more than) type (30) % for the past select (1) financial year(s)
 4. Quality of Earnings – select (more than) type (1) for the past select (1) financial year(s)
 5. Total Shareholder Return – select (more than) type (5) % for the past select (3) financial year(s)
 6. Total Shareholder Return – select (more than) type (5) % for the past select (5) financial year(s)
- > click Save Template > Create New Template type (Growth Companies) > click Create

- > click Save Template as > select Growth Companies > click Save
- > click Screen Now (may take a few minutes)
- > Sort By: Select (Revenue Growth) Select (Desc)
- > Mouse over stock name > Factsheet > looking for Total Shareholder Return



CNMC GOLDMINE HOLDINGS LIMITED (5TP)

ANALYSIS

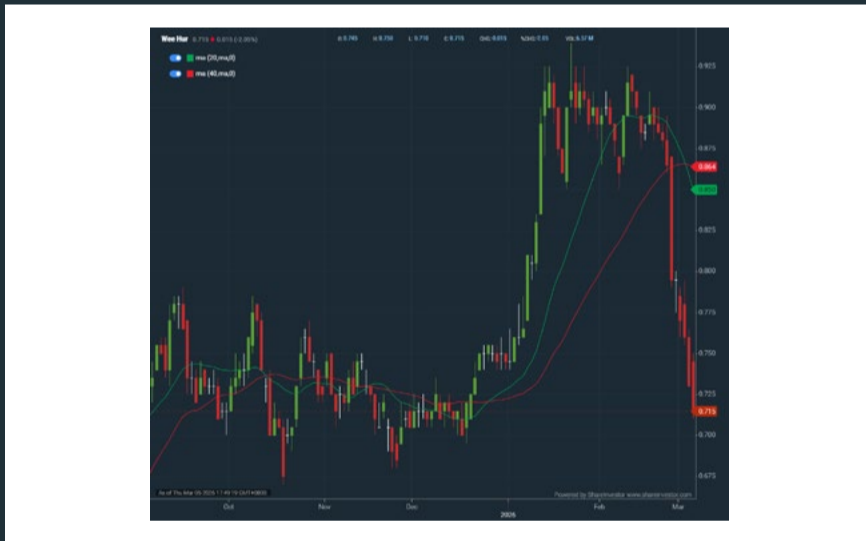


Period	Dividend Received	Capital Appreciation	Total Shareholder Return	
Short Term Return	5 Days	-	+11.43 %	
	10 Days	-	+50.00 %	
	20 Days	-	+46.62 %	
Medium Term Return	3 Months	-	+85.71 %	
	6 Months	-	+151.61 %	
	1 Year	0.025	+1.650	+558.33 %
Long Term Return	2 Years	0.036	+1.756	+923.71 %
	3 Years	0.040	+1.777	+1050.29 %
	5 Years	0.048	+1.757	+935.23 %
Annualised Return	Annualised	-	+59.59 %	



WEE HUR HOLDINGS LTD. (E3B)

ANALYSIS

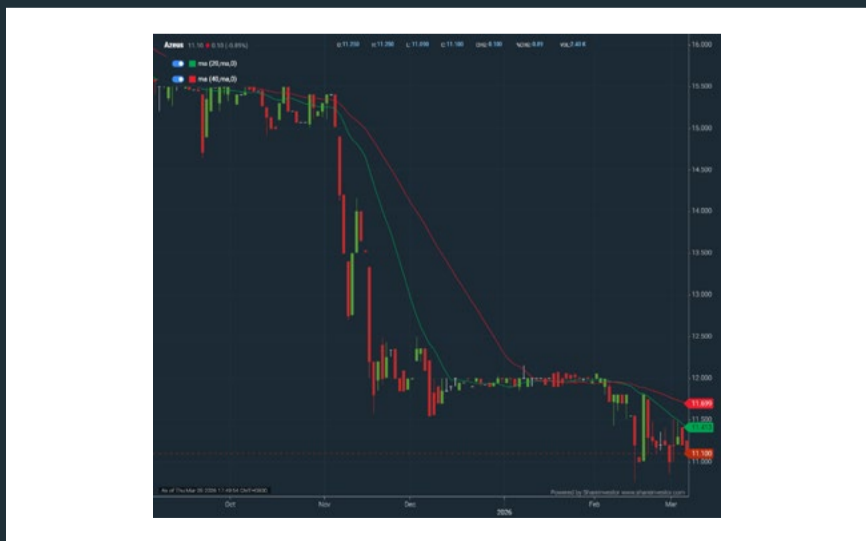


Period	Dividend Received	Capital Appreciation	Total Shareholder Return	
Short Term Return	5 Days	-	-17.34 %	
	10 Days	-	-19.21 %	
	20 Days	-	-19.66 %	
Medium Term Return	3 Months	-	-	
	6 Months	-	-2.72 %	
	1 Year	0.083	+0.348	+117.44 %
Long Term Return	2 Years	0.069	+0.557	+408.86 %
	3 Years	0.094	+0.533	+344.51 %
	5 Years	0.104	+0.538	+362.71 %
Annualised Return	Annualised	-	+35.85 %	



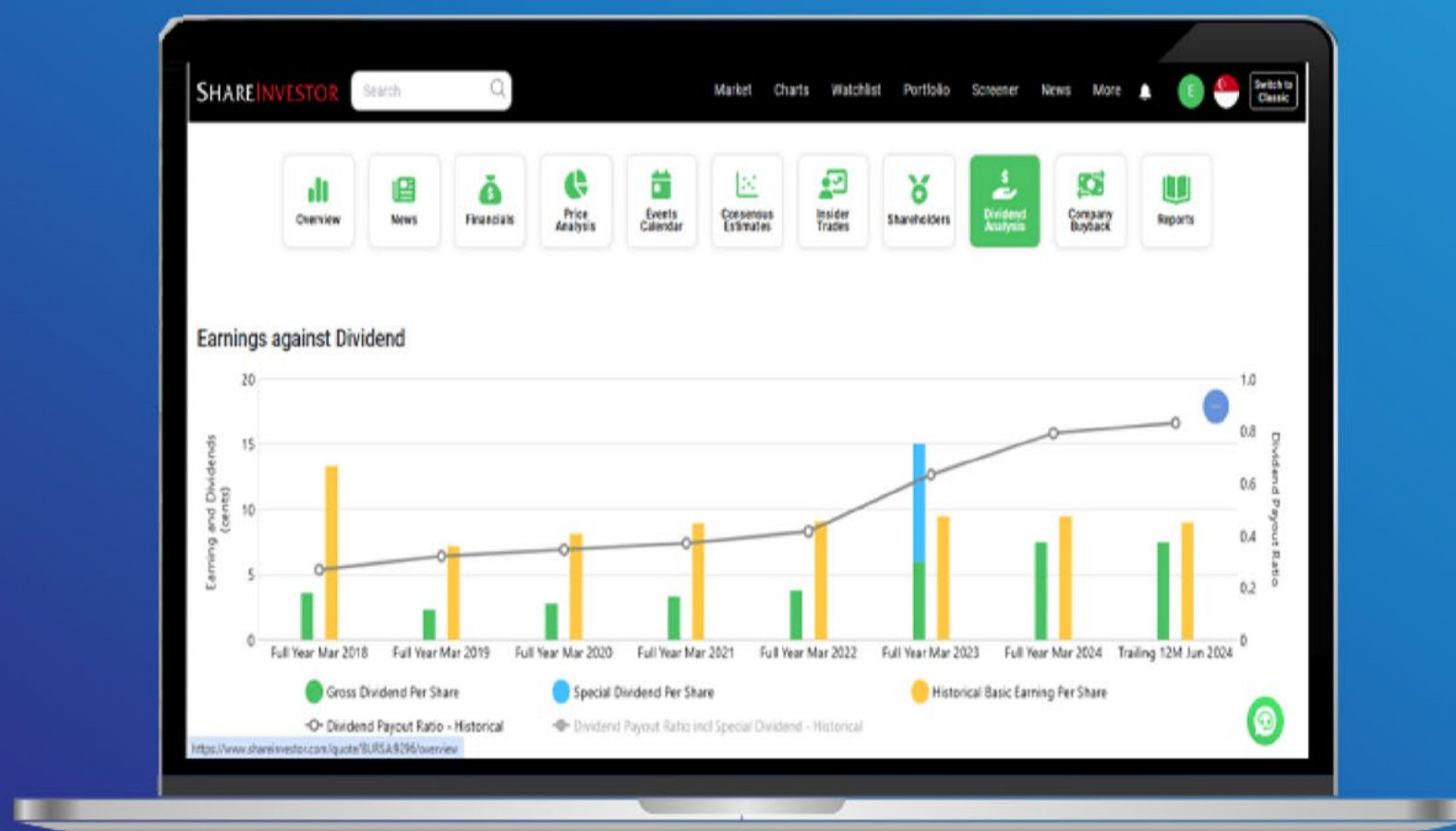
AZEUS SYSTEMS HOLDINGS LTD. (BBW)

ANALYSIS



Period	Dividend Received	Capital Appreciation	Total Shareholder Return	
Short Term Return	5 Days	-	-0.89 %	
	10 Days	-	+0.91 %	
	20 Days	0.258	-0.890	-5.27 %
Medium Term Return	3 Months	0.258	-1.260	-8.11 %
	6 Months	0.911	-4.300	-22.01 %
	1 Year	0.911	-1.100	-1.55 %
Long Term Return	2 Years	1.505	+2.900	+53.72 %
	3 Years	1.849	+2.700	+54.15 %
	5 Years	2.315	+9.180	+598.70 %
Annualised Return	Annualised	-	+47.82 %	

Tired of low returns? Let's talk high-paying Dividends!



✓ **Top Dividend Picks Right Now**

✓ **Insider Tips** – Advanced strategies for experienced investors

✓ **Easy-to-Follow Tutorial**

Get the most out of dividends, use our Dividend Analysis function –
Click to Watch Our Tutorial Below!

Upgrade Your Dividend Strategy Here



DEFINITION Share price of a company trading at a lower price as compared to its fundamentals (FA) such as financial performance and dividend, allowing it to be attractive to value investors.

CHART GUIDE Total Shareholder Return (TSR) combines share price appreciation and dividend distributions paid to show the total return to the shareholder expressed as a percentage.



ShareInvestor WebPro > Screener > Market Screener (FA & TA) > select SGX > add criteria

A. Criteria

- > click Add Criteria
- Fundamental Analysis Conditions tab (i) Price Earnings Ratio
- Fundamental Analysis Conditions tab >select (ii) CAGR of Net Earnings
- Fundamental Analysis Conditions tab >select (iii) Net Debt To Equity
- Fundamental Analysis Conditions tab >select (iv) Return On Equity (ROE)

B. Conditions

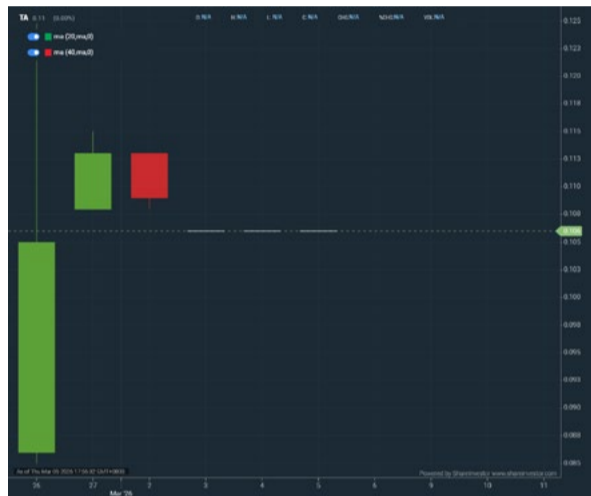
1. Price Earnings Ratio – select (less than) type (15) times now
2. CAGR of Net Earnings – select (more than) type (10) % for the past type (3) financial year(s)
3. Net Debt To Equity – select (less than) type (1) for the past select (1) financial year(s)
4. Return On Equity (ROE) – select (more than) type (10) % for the past select (1) financial year(s)

- > click Save Template > Create New Template type (Value Stock) > click Create
- > click Save Template as > select Value Companies > click Save
- > click Screen Now (may take a few minutes)
- > Mouse over stock name > Factsheet > looking for Total Shareholder Return
- > Mouse over stock name > Charts > click C2 Charts tab



TA CORPORATION LTD (PA3)

ANALYSIS



Period	Dividend Received	Capital Appreciation	Total Shareholder Return	
Short Term Return	5 Days	-	+0.033	+45.21 %
	10 Days	-	+0.033	+45.21 %
	20 Days	-	+0.033	+45.21 %
Medium Term Return	3 Months	-	+0.033	+45.21 %
	6 Months	-	+0.033	+45.21 %
	1 Year	-	+0.033	+45.21 %
Long Term Return	2 Years	-	+0.033	+45.21 %
	3 Years	-	+0.008	+8.16 %
	5 Years	-	+0.004	+3.92 %
Annualised Return	Annualised	-	-	+0.77 %



THAKRAL CORPORATION LTD (AWI)

ANALYSIS



Period	Dividend Received	Capital Appreciation	Total Shareholder Return	
Short Term Return	5 Days	-	+0.090	+5.14 %
	10 Days	-	+0.160	+9.52 %
	20 Days	-	+0.160	+9.52 %
Medium Term Return	3 Months	-	+0.210	+12.88 %
	6 Months	0.030	+0.329	+23.76 %
	1 Year	0.050	+1.065	+143.87 %
Long Term Return	2 Years	0.090	+1.254	+229.35 %
	3 Years	0.135	+1.234	+225.91 %
	5 Years	0.215	+1.431	+402.44 %
Annualised Return	Annualised	-	-	+38.11 %



MSM INTERNATIONAL LTD (510)

ANALYSIS



Period	Dividend Received	Capital Appreciation	Total Shareholder Return	
Short Term Return	5 Days	-	-	-
	10 Days	-	-	-
	20 Days	-	+0.055	+23.40 %
Medium Term Return	3 Months	-	+0.095	+48.72 %
	6 Months	-	+0.155	+114.81 %
	1 Year	-	+0.174	+150.00 %
Long Term Return	2 Years	-	+0.070	+31.82 %
	3 Years	-	+0.090	+45.00 %
	5 Years	-	+0.178	+158.93 %
Annualised Return	Annualised	-	-	+20.96 %

SHAREINVESTOR[®]

An AlphaInvest Company

Unlock Powerful REITs Insights with ShareInvestor's New REITs Metrics Data & Screener

ShareInvestor provide investors a one-stop platform for comparing Singapore's top REIT metrics. From potential upside and gearing ratios to occupancy rates and rental reversions, this powerful tool gives you a concise yet comprehensive view to identify high-potential REITs. Whether you are a retail investor or a seasoned analyst, ShareInvestor's intuitive interface makes REIT research fast, insightful, and effective.

No	Name	Last Done	Gearing %	Interest Cover Ratio	Occupancy Rate (%)	WADM	Cost of Debt (%)	WALE (Years)	Fixed-Rate Debt %	Rental Reversion Rate (%)
1	AIMS APAC Reit SGX:OSRU	1.310	20.900	2.400	93.600	3.000	4.300	4.400	85.000	20.000
2	Acro HTrust USD SGX:XZL	0.265	42.300	1.700	61.500	2.000	6.400	-	47.500	-
3	BHG Retail Reit SGX:BMGU	0.435	40.200	1.800	94.900	-	5.900	2.800	-	-
4	CDL HTrust SGX:JBS	0.775	41.800	2.200	75.000	2.300	3.900	-	33.800	-
5	CapLand Ascendas REIT SGX:A17U	2.640	38.900	3.600	91.500	3.100	3.600	3.800	73.600	11.000
6	CapLand Ascott T SGX:HMN	0.860	39.900	3.200	77.000	3.500	2.900	-	76.000	-
7	Capl and China T SGX:AUBU	0.680	42.600	3.000	97.700	3.900	3.510	1.700	86.000	0.500
8	CapLand India T SGX:CYBU	1.010	41.500	2.500	92.000	2.800	6.000	3.400	84.500	9.000
9	CapLand IntCom T SGX:C3BU	2.130	30.700	3.200	96.400	4.200	3.400	3.200	70.000	10.400
10	Daiwa Hse Log Tr SGX:DHLU	0.565	41.100	7.400	92.100	2.500	1.690	6.700	99.300	13.000

**Click to
Access**

COMPANY SPOTLIGHT



Skin in the Game: 3 Stocks with High Insider Ownership

Investor-One / Sun, Feb 15, 8:00 PM



One of the quiet but powerful signals investors often overlook is insider ownership. When founders, CEOs, and senior executives own a meaningful chunk of the business, their financial outcomes rise and fall alongside minority shareholders.

In Singapore's market, where many listed companies are founder-led or family-influenced, insider ownership can be especially revealing. It tells us who truly believes in the business beyond quarterly earnings calls.

In this article, we look at three SGX-listed names where senior insiders hold substantial stakes.

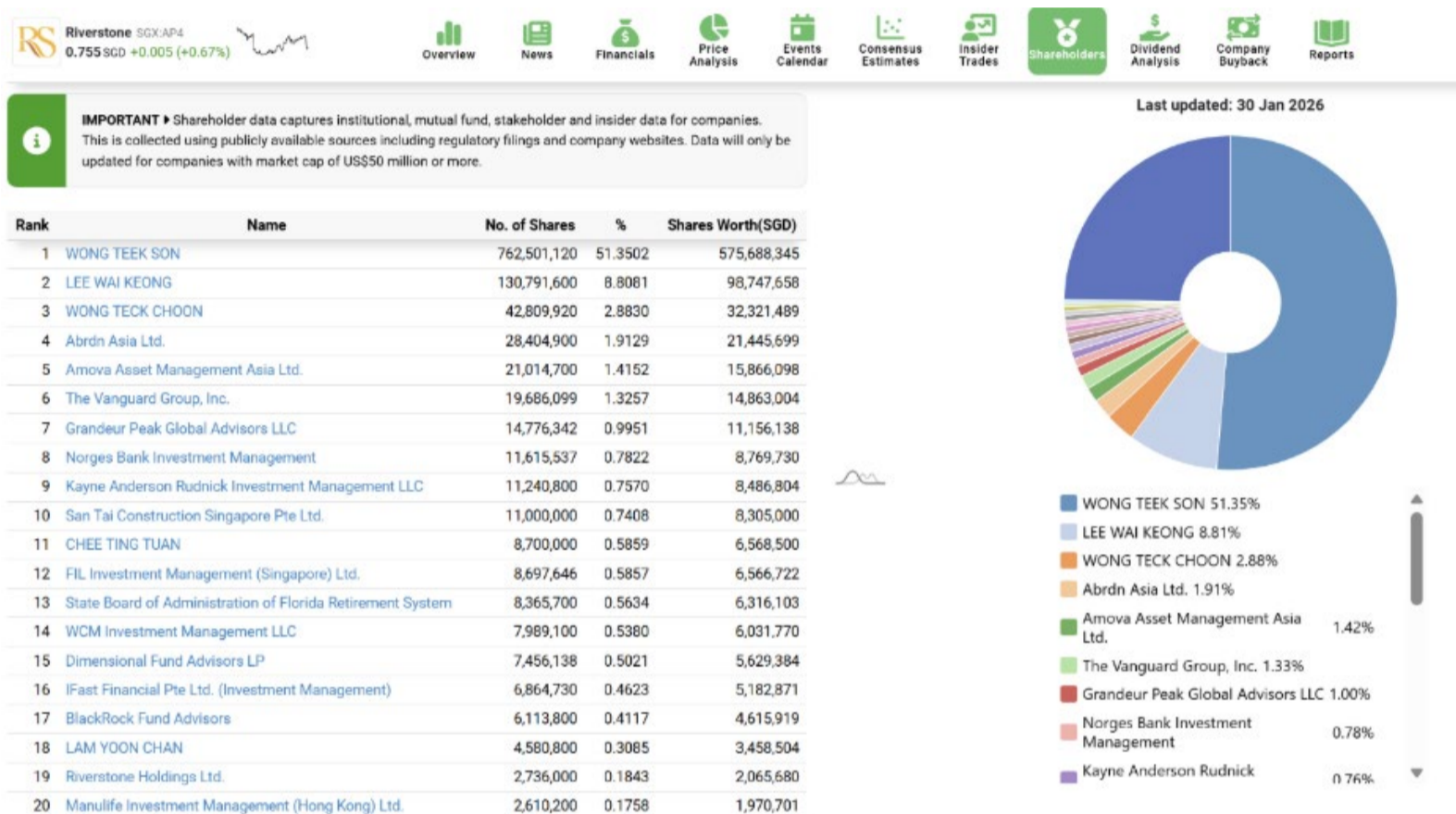
Riverstone Holdings: Founder Control in a Defensive Manufacturing Play

Riverstone Holdings is best known as a manufacturer of specialised

continued... Skin in the Game: 3 Stocks with High Insider Ownership

cleanroom and healthcare gloves, serving industries ranging from semiconductors to pharmaceuticals and healthcare.

While demand surged during the pandemic and normalised thereafter, Riverstone has continued to generate healthy cash flows and maintain a strong balance sheet.

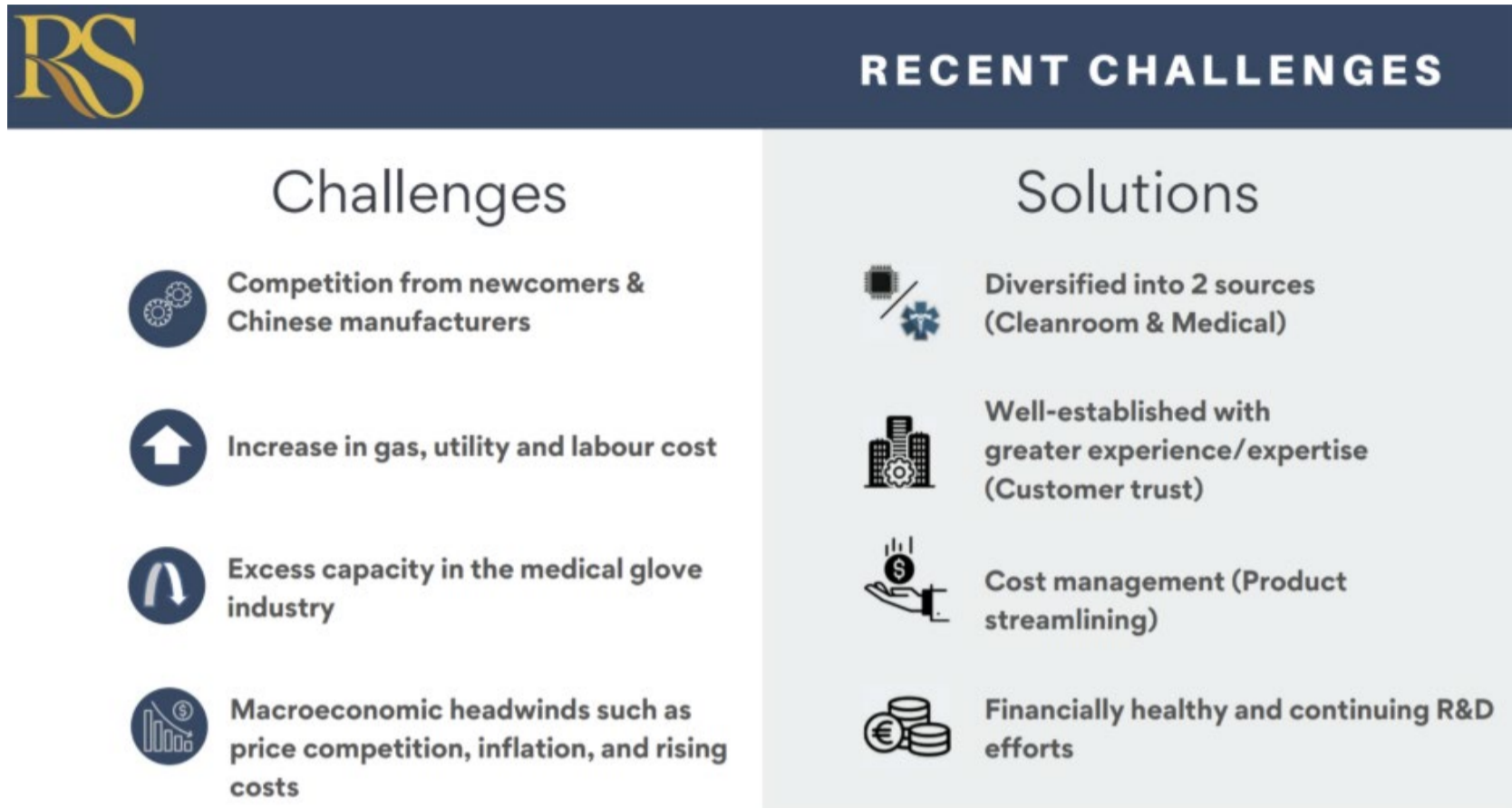


Source: Shareinvestor Pro

What stands out immediately is the level of founder ownership. Mr. Wong Teek Son, the Executive Chairman and Founder, controls approximately 51% of the company's outstanding shares based on the latest shareholder data.

Beyond the founder, the next layer of ownership also reflects close alignment with management. Mr. Lee Wai Keong, who is associated with the company's leadership circle, holds close to 9% of the shares. Another family-linked shareholder, Mr. Wong Teck Choon, owns just under 3%. Collectively, the top few insiders and related parties control well above 60% of Riverstone.

This concentration has several implications for investors. First, strategic decisions are unlikely to be driven by short-term market sentiment.

continued... Skin in the Game: 3 Stocks with High Insider Ownership

Source: Shareinvestor Pro

Riverstone has historically been conservative in capacity expansion and capital expenditure, preferring incremental growth funded by internal cash flows rather than aggressive leverage.

Second, dividend policy tends to be pragmatic. While payouts fluctuate with earnings cycles, the founder's large stake means dividend decisions directly impact his own cash returns.

From a business perspective, Riverstone's exposure to the semiconductor supply chain provides a degree of structural demand, especially as chip manufacturing becomes more sophisticated and contamination standards tighten.

At the same time, healthcare gloves provide a defensive buffer during economic slowdowns. With founder control firmly in place, investors are effectively partnering with an owner-operator who has weathered multiple cycles.

The trade-off, of course, is liquidity and influence. Minority shareholders have limited say in corporate direction, and free float is relatively constrained.

continued... Skin in the Game: 3 Stocks with High Insider Ownership

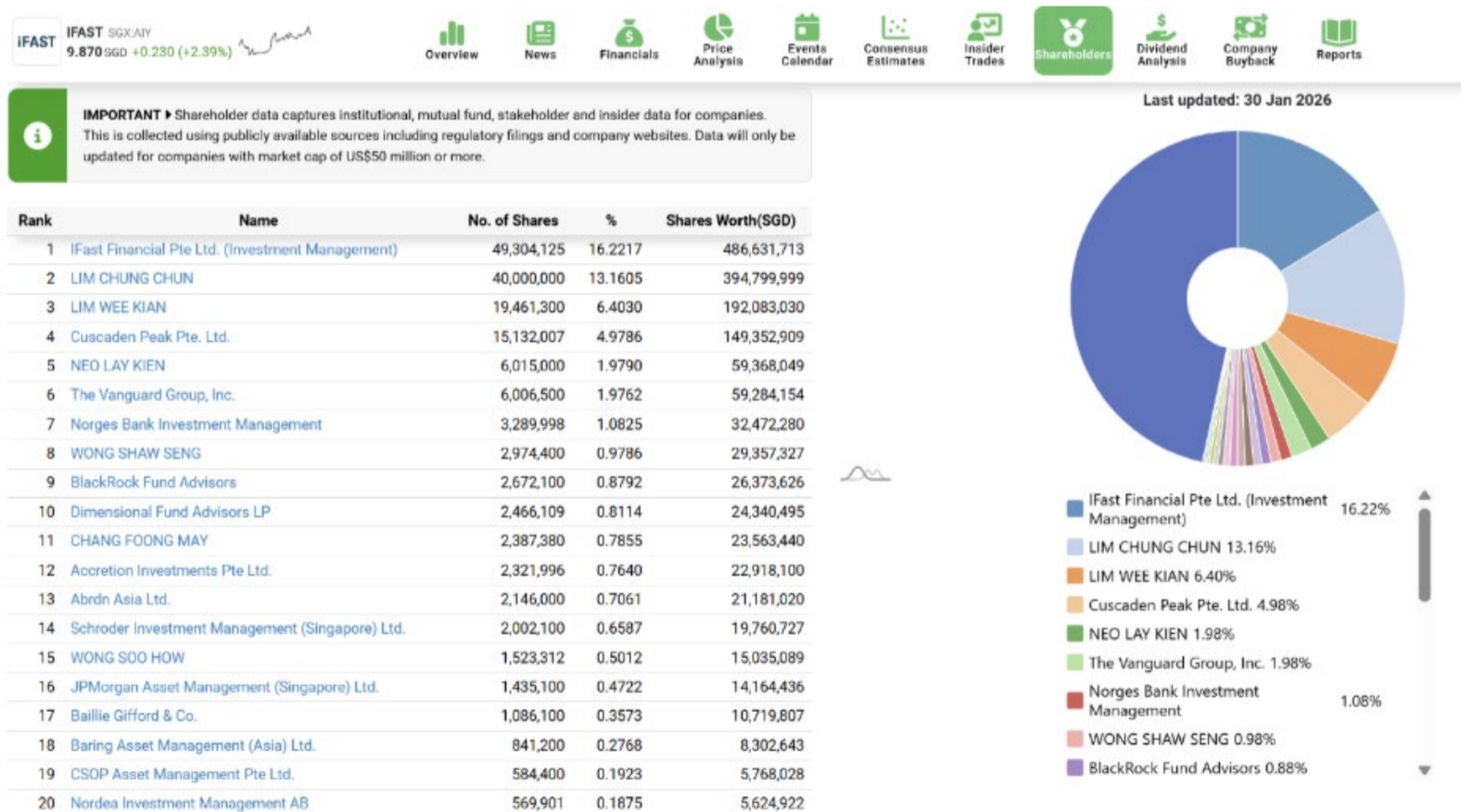
However, for long-term investors who value stability and alignment, Riverstone’s insider ownership profile remains a key pillar of its investment case.

iFAST Corporation: Management Ownership in a Platform-Driven Growth Story

iFAST Corporation occupies a very different space. It is a technology-enabled wealth management platform offering funds, ETFs, insurance, and digital banking services across multiple markets.

Unlike Riverstone’s manufacturing roots, iFAST is a scalability-driven business where execution, regulatory navigation, and platform adoption matter more than physical assets.

Insider ownership here is not as concentrated as Riverstone, but it is still meaningful and, importantly, spread across the senior leadership team.



Source: Shareinvestor Pro

The largest insider-linked shareholder is iFAST Financial Pte Ltd, the investment management arm closely associated with founder and CEO Lim Chung Chun. This entity owns roughly 16% of iFAST’s shares, making it the single largest shareholder.

continued... Skin in the Game: 3 Stocks with High Insider Ownership

Lim Chung Chun himself holds about 13% of the company directly, while Lim Wee Kian, a co-founder and senior executive, owns approximately 6%.

Combined, the founder and top management control over one-third of the company. This is a substantial stake for a mid-cap technology and financial services firm.

This ownership structure sends a clear signal. iFAST's leadership has chosen to reinvest heavily into platform expansion, new licenses, and long-gestation initiatives such as digital banking and pensions.

These investments suppress near-term earnings but aim to build a much larger ecosystem over time. The fact that senior management has significant equity exposure helps explain their willingness to tolerate short-term volatility in pursuit of long-term scale.

Operationally, iFAST has been transitioning from a pure platform distributor to a more integrated financial ecosystem.

Assets under administration continue to grow, fee income remains recurring, and newer verticals such as pensions and banking add optionality. The digital bank, in particular, represents a strategic bet that could reshape the company's earnings profile if profitability milestones are met.

For investors, insider ownership here plays a slightly different role compared to a founder-controlled industrial firm. It provides confidence that management incentives are aligned with shareholder value creation rather than purely salary or bonus-driven metrics.

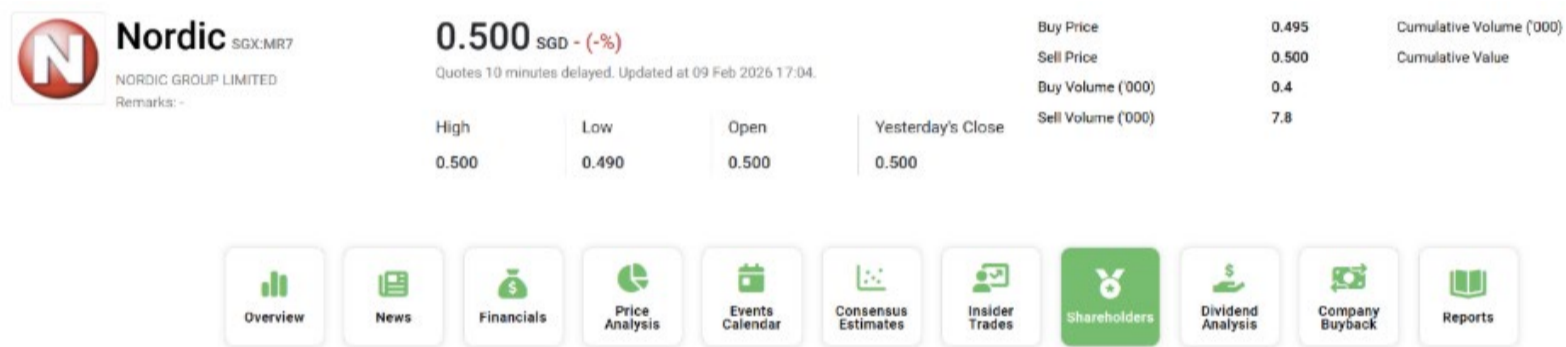
At the same time, iFAST's shareholder base remains diverse, with institutional investors holding meaningful stakes, ensuring external scrutiny and governance balance.

continued... Skin in the Game: 3 Stocks with High Insider Ownership

Nordic Group: Majority Ownership and Extreme Alignment

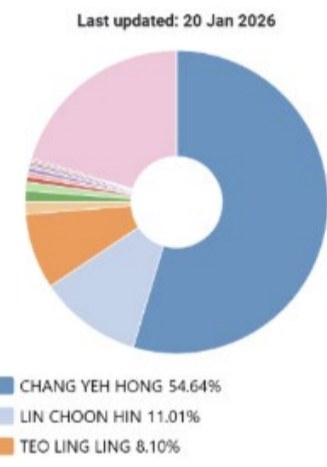
If Riverstone represents strong founder influence and iFAST reflects management alignment, Nordic Group sits at the extreme end of insider ownership.

The company operates across precision engineering, system integration, scaffolding, insulation, and cleanroom solutions, serving industrial and infrastructure clients.



IMPORTANT Shareholder data captures institutional, mutual fund, stakeholder and insider data for companies. This is collected using publicly available sources including regulatory filings and company websites. Data will only be updated for companies with market cap of US\$50 million or more.

Rank	Name	No. of Shares	%	Shares Worth(SGD)
1	CHANG YEH HONG	218,545,025	54.6363	109,272,512
2	LIN CHOON HIN	44,050,000	11.0125	22,025,000
3	TEO LING LING	32,419,500	8.1049	16,209,750
4	YAP TIN FOO	5,000,000	1.2500	2,500,000
5	CHOU CHEE FATT	4,877,000	1.2193	2,438,500
6	CHANG YEH FUNG	3,524,800	0.8812	1,762,400
7	QUEK HUI LING JOANNE	2,437,800	0.6095	1,218,900
8	CHIA MENG RU	1,871,600	0.4679	935,800
9	Nordic Group Ltd.	1,741,100	0.4353	870,550
10	CHANG HUI MIN MARISSA	1,269,000	0.3173	634,500



Source: Shareinvestor Pro

The defining feature of Nordic’s shareholding structure is the stake held by its CEO, Chang Yeh Hong. He owns approximately 54.6% of the company, giving him outright majority control.

At current prices, his stake is valued at over S\$100 million, making Nordic effectively a founder-led, publicly listed company.

The next largest insider, Lin Choon Hin, holds about 11%, followed by Teo Ling Ling with just over 8%. Together, the top three insiders control more than 70% of the company. This level of ownership is rare on the SGX mainboard and signals an extraordinary degree of

continued... Skin in the Game: 3 Stocks with High Insider Ownership

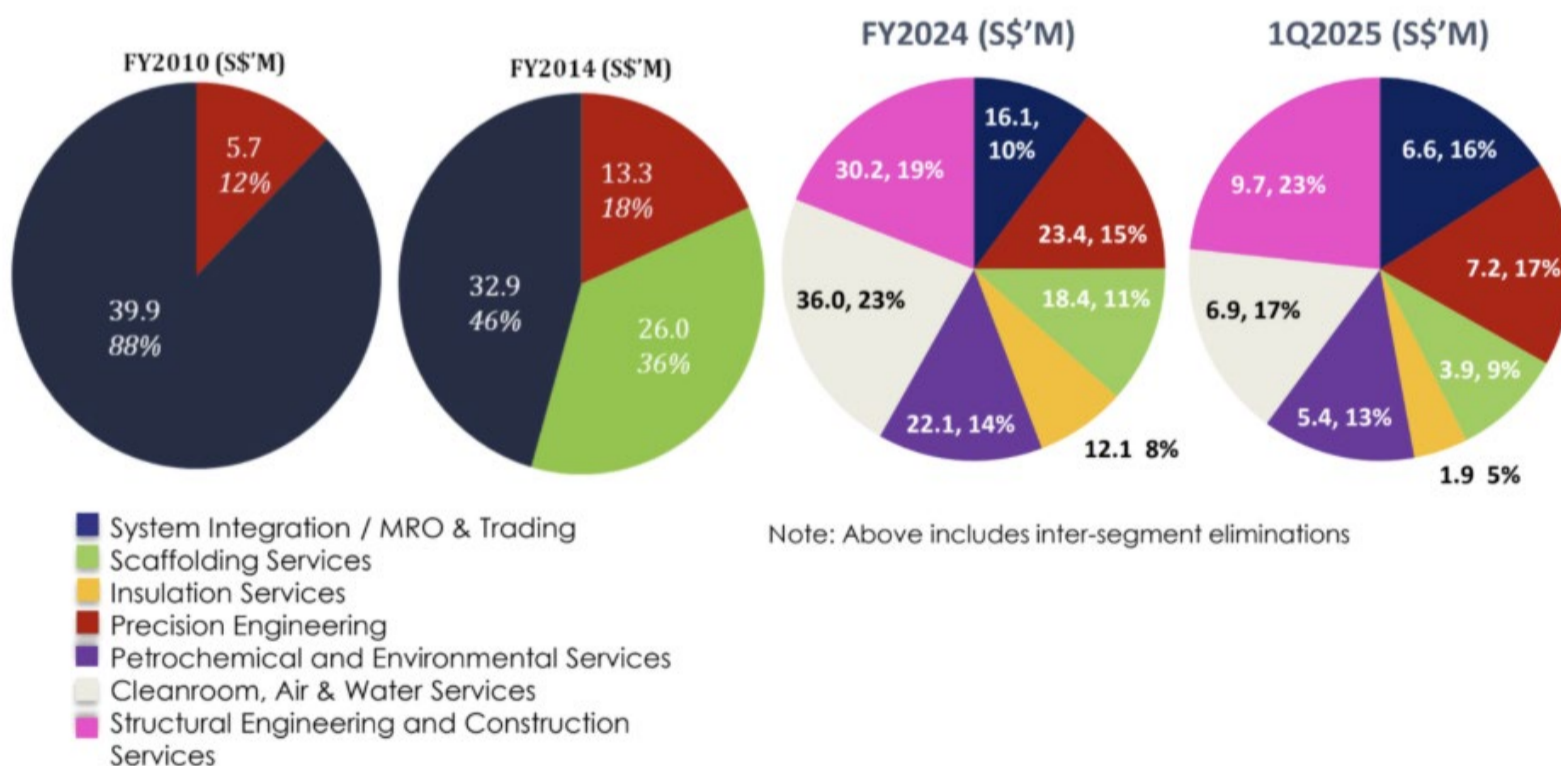
alignment.

For investors, this has both advantages and risks. On the positive side, decision-making is fast, focused, and long-term. Management does not need to optimise for quarterly optics or cater to shifting investor narratives.

Capital allocation tends to prioritise balance sheet resilience and sustainable cash generation. Recent insider purchases further reinforce confidence in the company's prospects at current valuations.

However, such concentration also reduces liquidity and limits the influence of minority shareholders.

From a business standpoint, Nordic benefits from exposure to infrastructure, industrial maintenance, and environmental solutions, areas that tend to see steady demand even during economic slowdowns.



While margins can be sensitive to labour and cost inflation, the company's diversified service mix helps smooth earnings across cycles.

continued... Skin in the Game: 3 Stocks with High Insider Ownership

Why Insider Ownership Still Matters

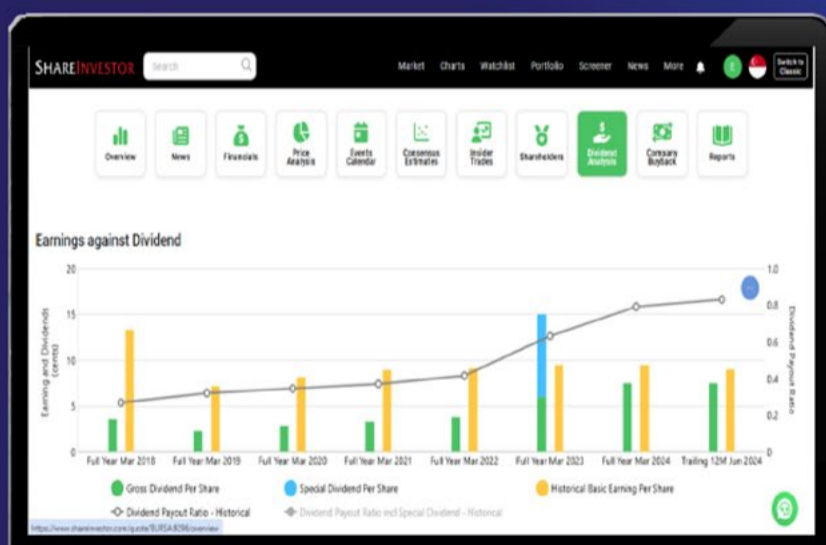
In a market increasingly driven by narratives and short-term flows, looking at who truly has skin in the game can be a grounding exercise.

These three stocks remind us that behind every ticker is a group of people whose fortunes are directly tied to the outcomes they deliver. For long-term investors, that alignment is often worth paying attention to.

SHAREINVESTOR®
An AlphaInvest Company

Tired Of Low Returns? Let's Talk High-Paying Dividends!

- ✓ Top Dividend Picks Right Now
- ✓ Insider Tips – Advanced strategies for experienced investors
- ✓ Easy-to-Follow Tutorial



Get the most out of dividends, use our Dividend Analysis function – Click to Watch Our Tutorial Below!

Upgrade Your Dividend Strategy Here



INVESTOR ACADEMY



Why We Are Adding This Next 50 Stock to Our Model Portfolio

Investor-One / Sat, Feb 14, 8:00 AM



Singapore's equity market is quietly evolving and the introduction of the iEdge Singapore Next 50 Index has sharpened this focus by highlighting companies that sit at the intersection of recovery, restructuring and rising institutional interest.

Against this backdrop, the Investor-One Model Portfolio continues to refine its mandate to emphasise quality small and mid-cap companies with asset backing, disciplined balance sheets and clearer earnings visibility.

This review cycle reflects that discipline through one exit and one new addition that better aligns the portfolio with the structural direction of Singapore's mid-cap ecosystem.

continued... Why We Are Adding This Next 50 Stock to Our Model Portfolio

Portfolio Action Summary

We are adding Banyan Tree Holdings Ltd to the model portfolio and selling our position in Hock Lian Seng Holdings Ltd.

Banyan Tree Holdings was purchased on 6 February 2026 at a closing price of S\$0.65 for 16,000 shares.

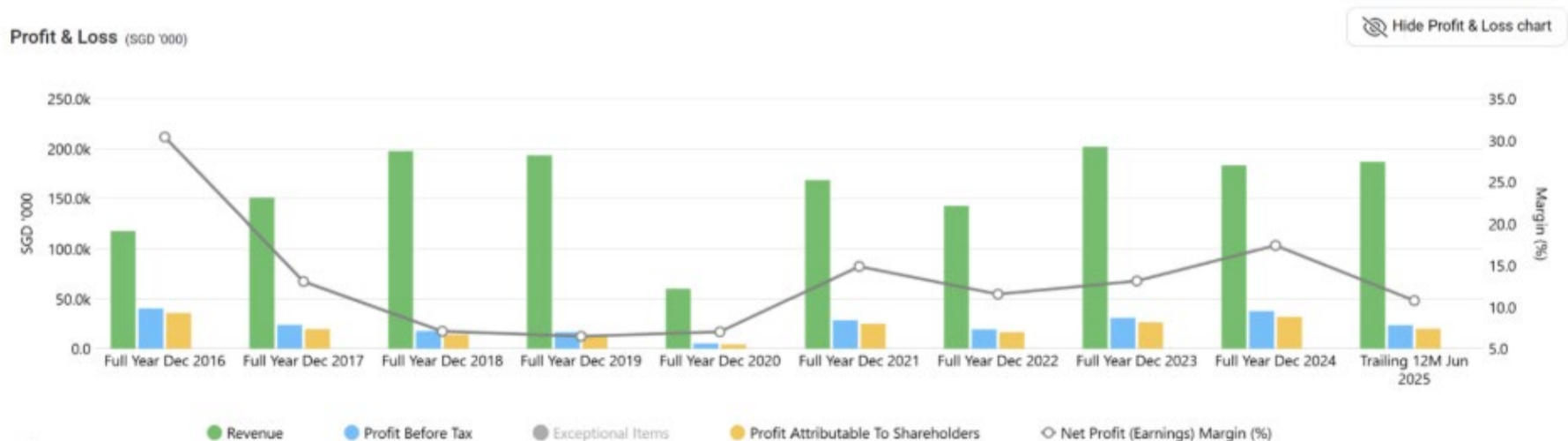
Hock Lian Seng Holdings was sold on 3 February 2026 at a share price of S\$0.44 for 20,000 shares.

These transactions are driven by portfolio realignment rather than short-term market movements.

Why We Are Exiting Hock Lian Seng

Hock Lian Seng has contributed positively during the construction upcycle, benefiting from public infrastructure spending and improved project execution.

Construction remains a timing-sensitive business, with earnings exposed to labour costs, materials inflation and project recognition schedules.



Source: Shareinvestor Pro

On the other hand, we are not seeing a significant uptick in revenue as compared to the other construction stocks which have secured much more and profitable contracts.

continued... Why We Are Adding This Next 50 Stock to Our Model Portfolio

As the portfolio shifts toward greater alignment with the Next 50 universe, this risk-reward profile is less suitable under the updated mandate.

Exiting the position frees up capital for opportunities with stronger asset backing and more diversified earnings drivers.

Why Banyan Tree Fits the Next 50 Framework

Banyan Tree Holdings is an asset-heavy hospitality group with global brand recognition and diversified income streams.

The group operates across resorts and hotels, branded residences, property development, spa and wellness services, and asset-light management contracts.

This diversification provides multiple earnings levers across different phases of the travel and tourism cycle.

Importantly, Banyan Tree sits within the Next 50 Index universe, which enhances its visibility to institutional investors and supports long-term liquidity.

Asset Backing and Balance Sheet Strength

A key strength of Banyan Tree lies in its portfolio of owned and invested assets across Asia, Europe, Africa and the Middle East.

Many of these properties are located in prime leisure destinations with long-term scarcity value.

Management has actively pursued asset recycling, selective divestments and a greater focus on capital-light management contracts.

These initiatives have strengthened the balance sheet and improved

continued... Why We Are Adding This Next 50 Stock to Our Model Portfolio

capital efficiency over time.

From a portfolio perspective, this asset backing provides downside support and strategic flexibility.



Source: [Banyan Tree's FY2024 powerpoint slides](#)

Projected Pipeline Growth and Asset-Light Expansion

Banyan Tree's growth outlook is supported by a projected pipeline CAGR of around 10%, based on expected project completion timelines.

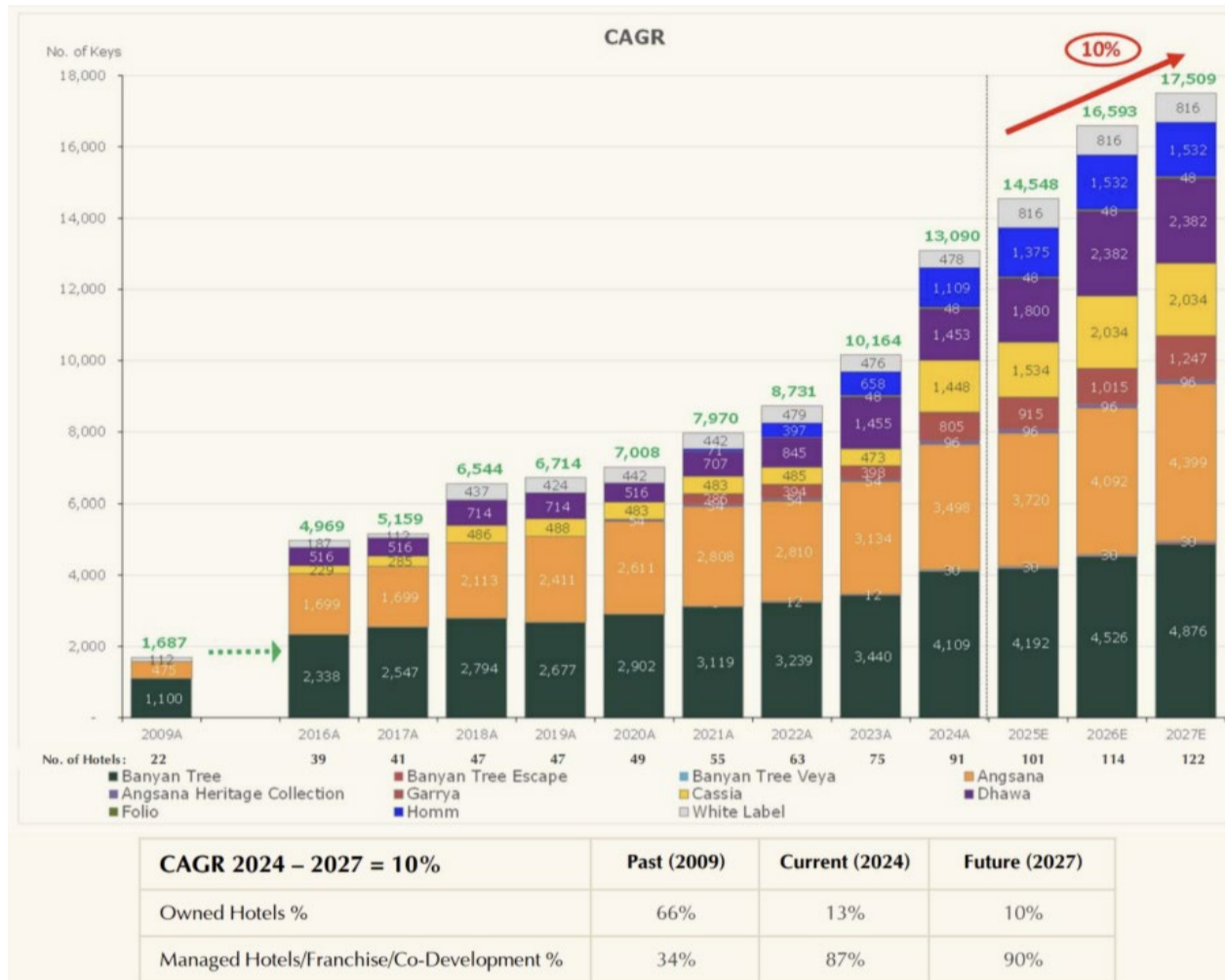
The group plans to open 31 new hotels over the next three years, significantly expanding its global footprint.

Room keys are estimated to grow by approximately 34% to more than 17,000 keys by the end of 2027.

This expansion is anchored by a strengthening multi-branded ecosystem that reinforces a diverse portfolio of hospitality brands.

continued... Why We Are Adding This Next 50 Stock to Our Model Portfolio

Growth is increasingly driven by managed hotel fees, aligning closely with the group’s asset-light strategy and reducing reliance on owned assets.



Source: [Banyan Tree’s FY2024 powerpoint slides](#)

The group plans to open 31 new hotels over the next three years, significantly expanding its global footprint.

Room keys are estimated to grow by approximately 34% to more than 17,000 keys by the end of 2027.

This expansion is anchored by a strengthening multi-branded ecosystem that reinforces a diverse portfolio of hospitality brands.

Growth is increasingly driven by managed hotel fees, aligning closely with the group’s asset-light strategy and reducing reliance on owned assets.

Valuation and Entry Rationale

The entry price of S\$0.65 reflects a P/B ratio of 0.77x, a valuation that continues to discount much of the operational recovery and

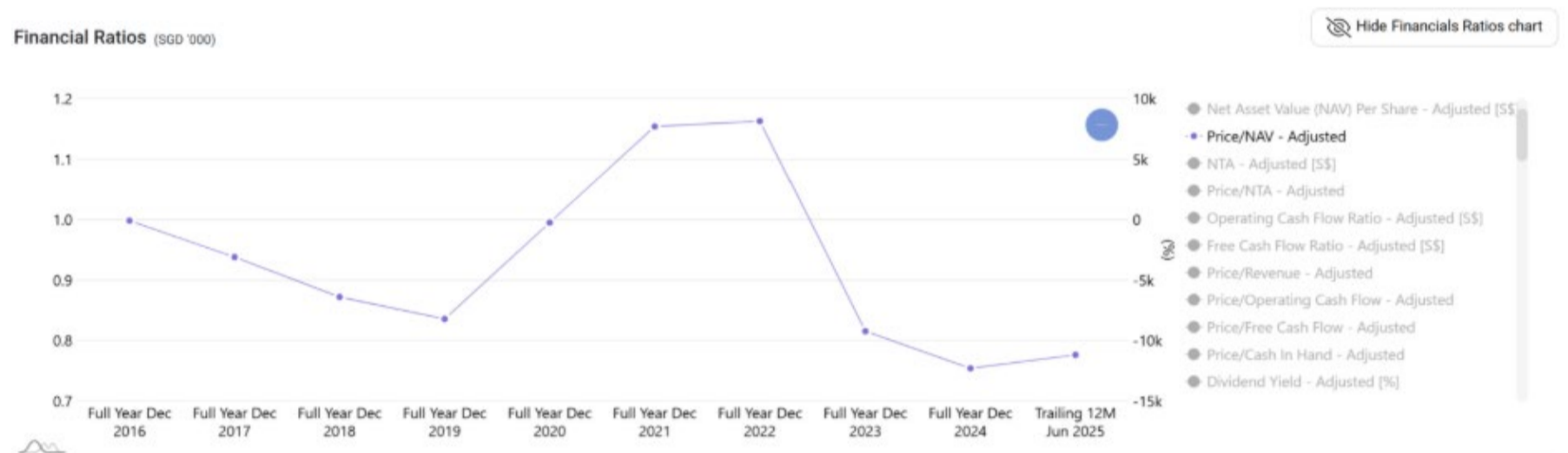
continued... Why We Are Adding This Next 50 Stock to Our Model Portfolio

strategic optionality.

The company's market capitalisation remains modest relative to its asset base and global brand equity.

As institutional investors increasingly screen for Next 50 constituents with recovery narratives, valuation gaps may narrow.

The portfolio objective is to position early rather than chase re-ratings after liquidity improves.



Source: Shareinvestor Pro

Conclusion

The addition of Banyan Tree and exit from Hock Lian Seng reflect the continued evolution of the Investor-One Model Portfolio.

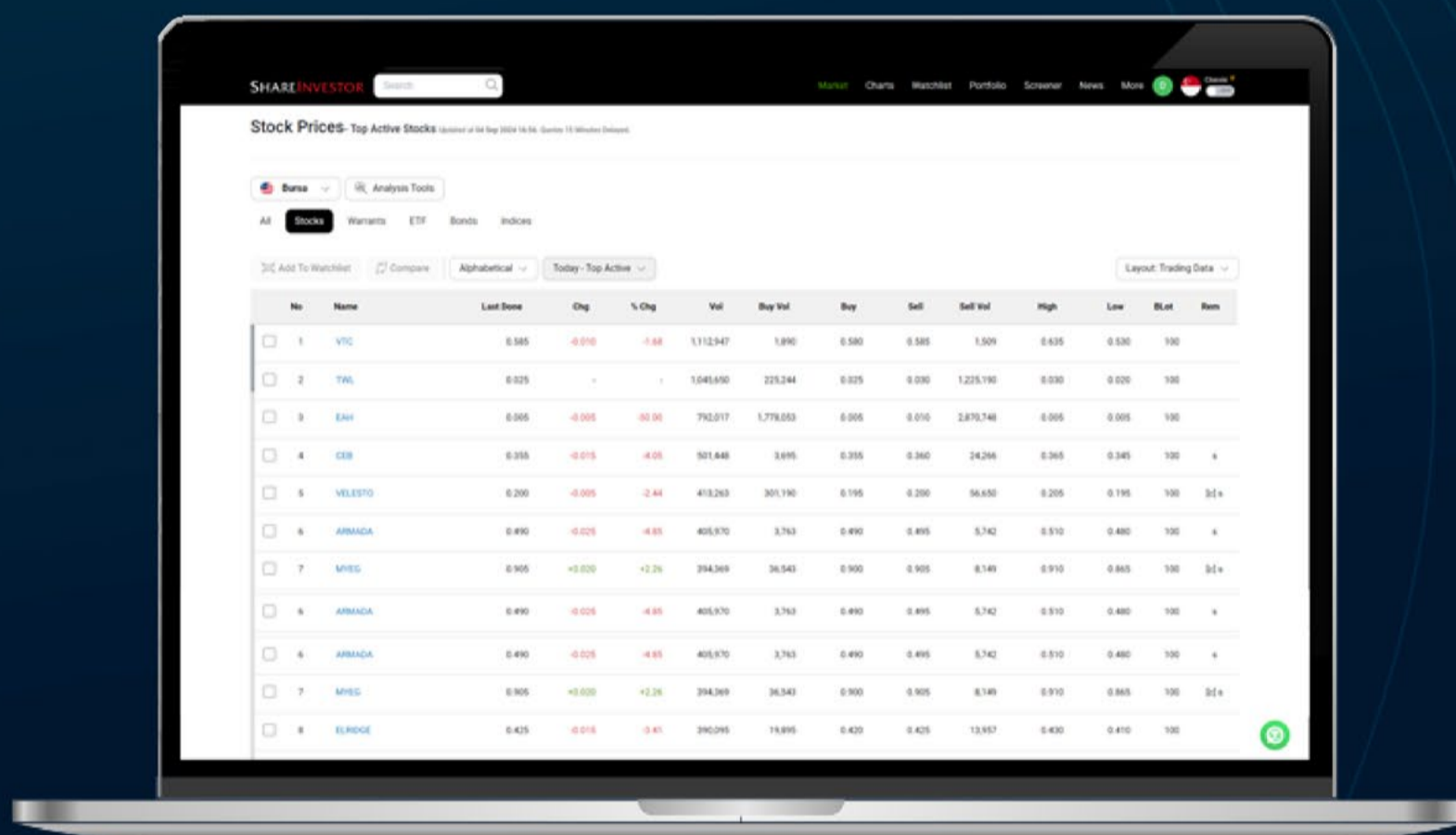
As Singapore's small- to mid-cap ecosystem matures, alignment with the Next 50 framework and Singapore hidden gems becomes increasingly important.

By prioritising companies with scale, liquidity, asset support and structural demand drivers, the portfolio is better positioned for the next phase of market development.

We will continue to refine holdings as institutional participation and market depth across the Next 50 universe continue to build.

SHAREINVESTOR®
An AlphaInvest Company

Navigating the **New** ShareInvestor A Step-by-Step Guide



Learn more about some of our new platform's exciting features and functions, including:

- ✓ The functionalities of ShareInvestor's Factsheet
- ✓ Key differences in the updated ShareInvestor Factsheet
- ✓ Case study on how to utilize the Factsheet effectively

[Click to Watch The Webinar](#)



INVESTOR-ONE PORTFOLIO

Curated and managed by the Investor-One team under ShareInvestor, this **free-to-access** portfolio will feature local small and mid-cap companies within Singapore Exchange's Mainboard and Catalyst.

Join us on the journey and watch as we manage a locally vested portfolio with a **fund of \$100,000**.







ENTER PORTFOLIO 

Investor-One Portfolio

(As at yesterday)

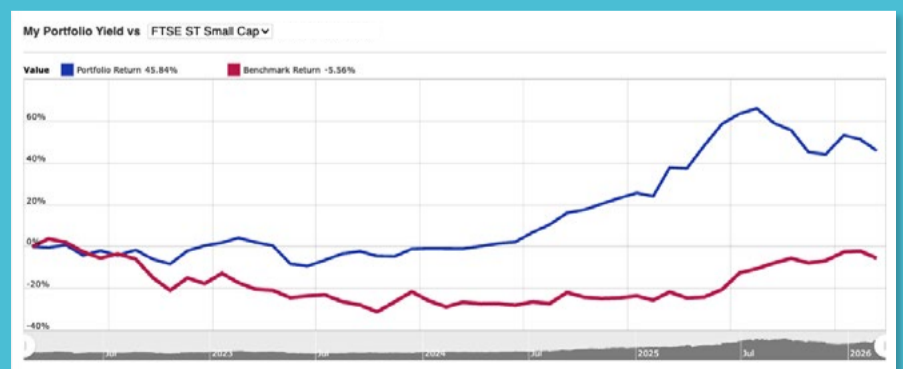
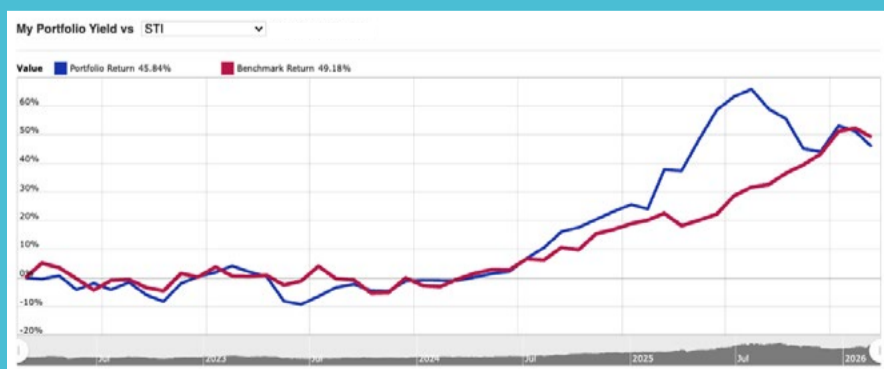
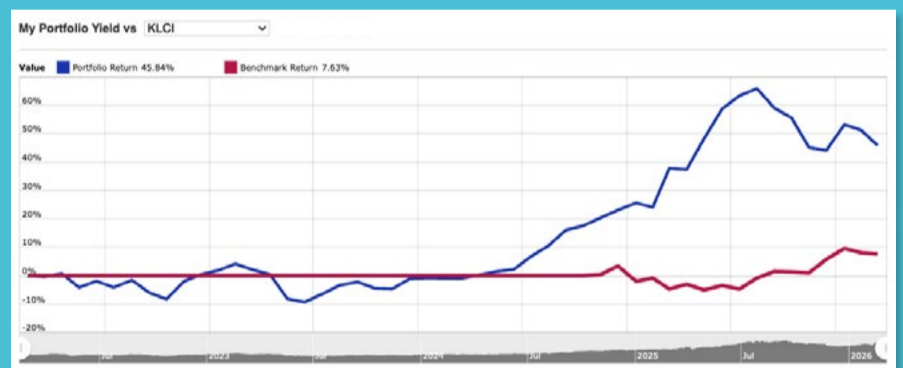
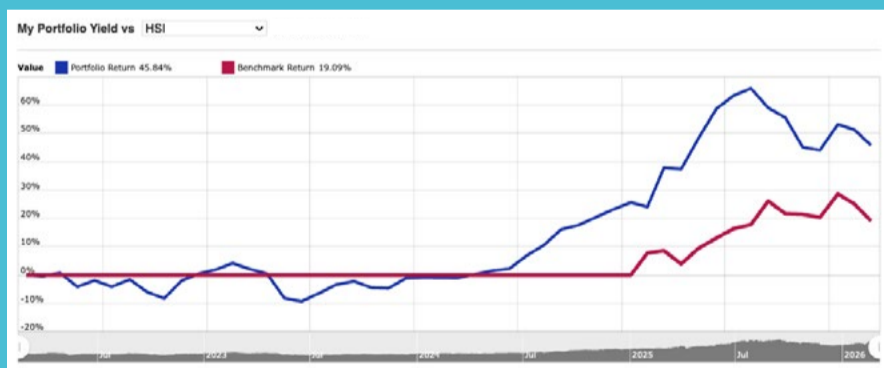
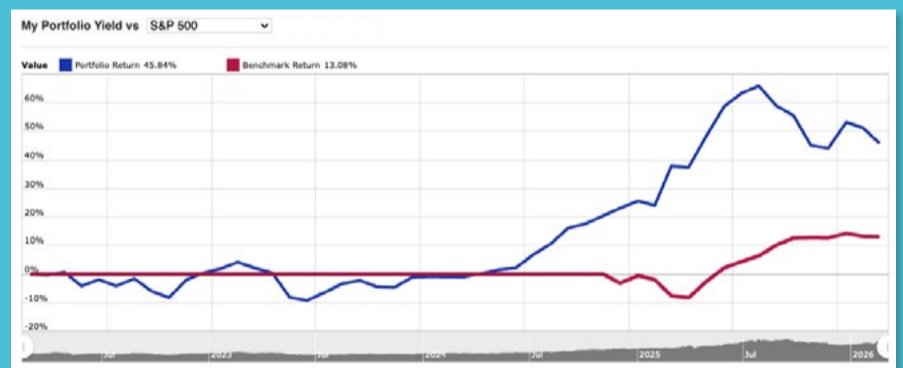
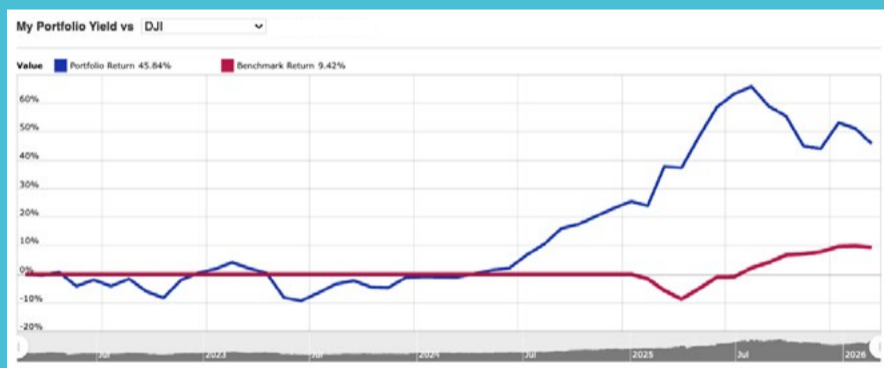
Curated by Investor-One team, this portfolio features growing small and mid cap companies within Singapore Exchange Catalist and Main Board.

The criteria for the companies are selected based on the following metrics, with further evaluation on qualitative factors like management team and growth prospects:

 <p>Market Capitalisation of S\$3 billion and below</p>	 <p>PE Ratio < 15 times OR PB Ratio < 0.5 times</p>
 <p>Net Debt/Equity < 2 times</p>	 <p>Positive Free Cash Flow</p>

74.4% Total Return

YTD(%)	Value	P/L	Dividend	P/L + Dividend	Cash	Currency
4.08	158,008	55,796	18,647	74,443	16,435	SGD



Note: The Portfolio Return indicated in the chart does not include dividend income, as opposed to Total Return that is inclusive of Dividend Income.

continued on next page...

INVESTOR-ONE

Discover Growing Companies

Summary

Open Positions

Unrealized P/L ↑ 58,400

Name ↑	Weightage	Entry	Last	Chg	Share	P/L	Div	P/L + Div	Cost	Value
Banyan Tree	6.28%	0.65	0.62	-	16000	-480 (-4.62%)	-	-480	10,400	9,920
Centurion	45.57%	0.4	1.44	0.01 (0.70%)	50000	52,000 (260.00%)	3,500	55,500	20,000	72,000
ComfortDelGro	6.51%	1.44	1.47	0.03 (2.08%)	7000	210 (2.08%)	-	210	10,080	10,290
Geo Energy Res	9.20%	0.31	0.45	0.005 (1.12%)	32300	4,522 (45.16%)	2,406	6,928	10,013	14,535
Hyphens Pharma	10.28%	0.3	0.325	0.01 (3.17%)	50000	1,250 (8.33%)	3,870	5,120	15,000	16,250
Nordic	2.91%	0.395	0.46	0.005 (1.10%)	10000	650 (16.46%)	700	1,350	3,950	4,600
Raffles Medical	6.52%	0.975	1.03	0.01 (0.98%)	10000	550 (5.64%)	-	550	9,750	10,300
+ UtdHampshReitUSD	12.73%	0.681	0.525	0.005 (0.96%)	30000	-302 (-1.48%)	4,051	3,748	20,415	20,113

Summary

Closed Positions

Realized Profit ↓ -2,604

Name ↑	Avg Buy	Avg Sell	Shares	Comm	P/L	P/L + Div	Proceeds
HG Metal	0.375	0.34	10000	-	-350	50	3,400
Hock Lian Seng	0.29	0.44	20000	-	3,000	4,110	8,800
HRnetGroup	0.77	0.715	20000	-	-1,100	674	14,300
InnoTek	0.735	0.48	10000	-	-2,550	-2,350	4,800
JEP Hldgs	0.31	0.265	32300	-	-1,454	-1,454	8,560
Kimly	0.4	0.385	10000	-	-150	486	3,850

Transaction

Action	Stock	Price	Shares	Exchange Rate	Comm	Amount	Date ↓	Notes
Buy	Banyan Tree	0.650	16000	N/A	0.00	10,400	6 Feb 2026	-
Sell	Hock Lian Seng	0.440	20000	N/A	0.00	8,800	3 Feb 2026	-
Sell	JEP Hldgs	0.265	32300	N/A	0.00	8,560	24 Nov 2025	-
Sell	Kimly	0.385	10000	N/A	0.00	3,850	24 Nov 2025	-
Buy	ComfortDelGro	1.440	7000	N/A	0.00	10,080	24 Nov 2025	-
Buy	Raffles Medical	0.975	10000	N/A	0.00	9,750	24 Nov 2025	-
Sell	HRnetGroup	0.715	20000	N/A	0.00	14,300	2 Jan 2024	-
Buy	Centurion	0.400	50000	N/A	0.00	20,000	2 Jan 2024	-
Buy	UtdHampshReitUSD	0.500	30000	1.36	0.00	15,000	2 Jan 2024	-
Buy	JEP Hldgs	0.310	32300	N/A	0.00	10,013	4 Jul 2023	-
Buy	Geo Energy Res	0.310	32300	N/A	0.00	10,013	13 Mar 2023	-
Sell	HG Metal	0.340	10000	N/A	0.00	3,400	13 Mar 2023	-
Sell	InnoTek	0.480	10000	N/A	0.00	4,800	13 Mar 2023	-
Buy	HRnetGroup	0.770	20000	N/A	0.00	15,400	16 Feb 2022	-
Buy	Kimly	0.400	10000	N/A	0.00	4,000	16 Feb 2022	-
Buy	HG Metal	0.375	10000	N/A	0.00	3,750	16 Feb 2022	-
Buy	InnoTek	0.735	10000	N/A	0.00	7,350	16 Feb 2022	-
Buy	Nordic	0.395	10000	N/A	0.00	3,950	16 Feb 2022	-
Buy	Hyphens Pharma	0.300	50000	N/A	0.00	15,000	16 Feb 2022	-
Buy	Hock Lian Seng	0.290	20000	N/A	0.00	5,800	16 Feb 2022	-
Cash	Deposit	-	-	N/A	-	100,000	15 Feb 2022	-

continued on next page...

Dividend

YTD	TRAILING 12 MONTHS	2025	2024
SGD 879.75	SGD 5336.43	SGD 5340.80	SGD 4561.08

Stock	Ex-Date	Payable Date	Amt	Amt(SGD)	Total
Raffles Medical	11 May 2026	22 May 2026	SGD 0.0300	0.0300	300
Geo Energy Res	05 May 2026	14 May 2026	SGD 0.0010	0.0010	32.30
ComfortDelGro	03 May 2026	13 May 2026	SGD 0.0459	0.0459	321.30
UtdHampshReitUSD	26 Feb 2026	30 Mar 2026	USD 0.0110	0.0140	420.75
UtdHampshReitUSD	26 Feb 2026	30 Mar 2026	USD 0.0120	0.0153	459
Geo Energy Res	20 Nov 2025	01 Dec 2025	SGD 0.0010	0.0010	32.30
Centurion	04 Sep 2025	25 Sep 2025	SGD 0.0200	0.0200	1000
Geo Energy Res	20 Aug 2025	29 Aug 2025	SGD 0.0010	0.0010	32.30
UtdHampshReitUSD	20 Aug 2025	26 Sep 2025	USD 0.0123	0.0157	470.48
UtdHampshReitUSD	20 Aug 2025	26 Sep 2025	USD 0.0086	0.0110	328.95
Nordic	19 Aug 2025	04 Sep 2025	SGD 0.0083	0.0083	82.80
Kimly	25 Jun 2025	15 Jul 2025	SGD 0.0100	0.0100	100
Geo Energy Res	20 May 2025	30 May 2025	SGD 0.0025	0.0025	80.75
Nordic	07 May 2025	19 May 2025	SGD 0.0090	0.0090	89.90
Hyphens Pharma	06 May 2025	23 May 2025	SGD 0.0150	0.0150	750
Geo Energy Res	06 May 2025	16 May 2025	SGD 0.0040	0.0040	129.20
Centurion	06 May 2025	26 May 2025	SGD 0.0200	0.0200	1000
Hock Lian Seng	04 May 2025	16 May 2025	SGD 0.0180	0.0180	360
UtdHampshReitUSD	25 Feb 2025	28 Mar 2025	USD 0.0076	0.0097	290.70
UtdHampshReitUSD	25 Feb 2025	28 Mar 2025	USD 0.0129	0.0164	493.42
Kimly	03 Feb 2025	14 Feb 2025	SGD 0.0100	0.0100	100
Geo Energy Res	15 Dec 2024	08 Jan 2025	SGD 0.0020	0.0020	64.60
Centurion	05 Sep 2024	30 Sep 2024	SGD 0.0150	0.0150	750
Geo Energy Res	20 Aug 2024	29 Aug 2024	SGD 0.0020	0.0020	64.60
UtdHampshReitUSD	20 Aug 2024	27 Sep 2024	USD 0.0133	0.0170	508.72
UtdHampshReitUSD	20 Aug 2024	27 Sep 2024	USD 0.0068	0.0087	260.10
Nordic	19 Aug 2024	04 Sep 2024	SGD 0.0085	0.0085	85.30
Kimly	26 Jun 2024	15 Jul 2024	SGD 0.0100	0.0100	100
Geo Energy Res	22 May 2024	31 May 2024	SGD 0.0020	0.0020	64.60
Centurion	08 May 2024	31 May 2024	SGD 0.0150	0.0150	750
Geo Energy Res	08 May 2024	17 May 2024	SGD 0.0060	0.0060	193.80
Nordic	07 May 2024	17 May 2024	SGD 0.0059	0.0059	58.80
Hyphens Pharma	07 May 2024	24 May 2024	SGD 0.0086	0.0086	430
Hock Lian Seng	05 May 2024	17 May 2024	SGD 0.0150	0.0150	300
UtdHampshReitUSD	28 Feb 2024	28 Mar 2024	USD 0.0132	0.0168	504.90
UtdHampshReitUSD	28 Feb 2024	28 Mar 2024	USD 0.0082	0.0105	313.65
Kimly	29 Jan 2024	09 Feb 2024	SGD 0.0112	0.0112	112
Geo Energy Res	20 Nov 2023	29 Nov 2023	SGD 0.0040	0.0040	129.20
HRnetGroup	30 Aug 2023	11 Sep 2023	SGD 0.0187	0.0187	374
Geo Energy Res	28 Aug 2023	06 Sep 2023	SGD 0.0050	0.0050	161.50
Nordic	17 Aug 2023	04 Sep 2023	SGD 0.0100	0.0100	100.10
Hyphens Pharma	16 Aug 2023	31 Aug 2023	SGD 0.0360	0.0360	1800
Kimly	27 Jun 2023	14 Jul 2023	SGD 0.0056	0.0056	56
Geo Energy Res	29 May 2023	08 Jun 2023	SGD 0.0050	0.0050	161.50
Hyphens Pharma	09 May 2023	24 May 2023	SGD 0.0111	0.0111	555
Geo Energy Res	08 May 2023	17 May 2023	SGD 0.0400	0.0400	1292
Hock Lian Seng	07 May 2023	19 May 2023	SGD 0.0100	0.0100	200
Nordic	07 May 2023	17 May 2023	SGD 0.0091	0.0091	90.60
HRnetGroup	03 May 2023	12 May 2023	SGD 0.0187	0.0187	374
Kimly	26 Jan 2023	08 Feb 2023	SGD 0.0112	0.0112	112

This portfolio is managed by Investor-One research team, under ShareInvestor.

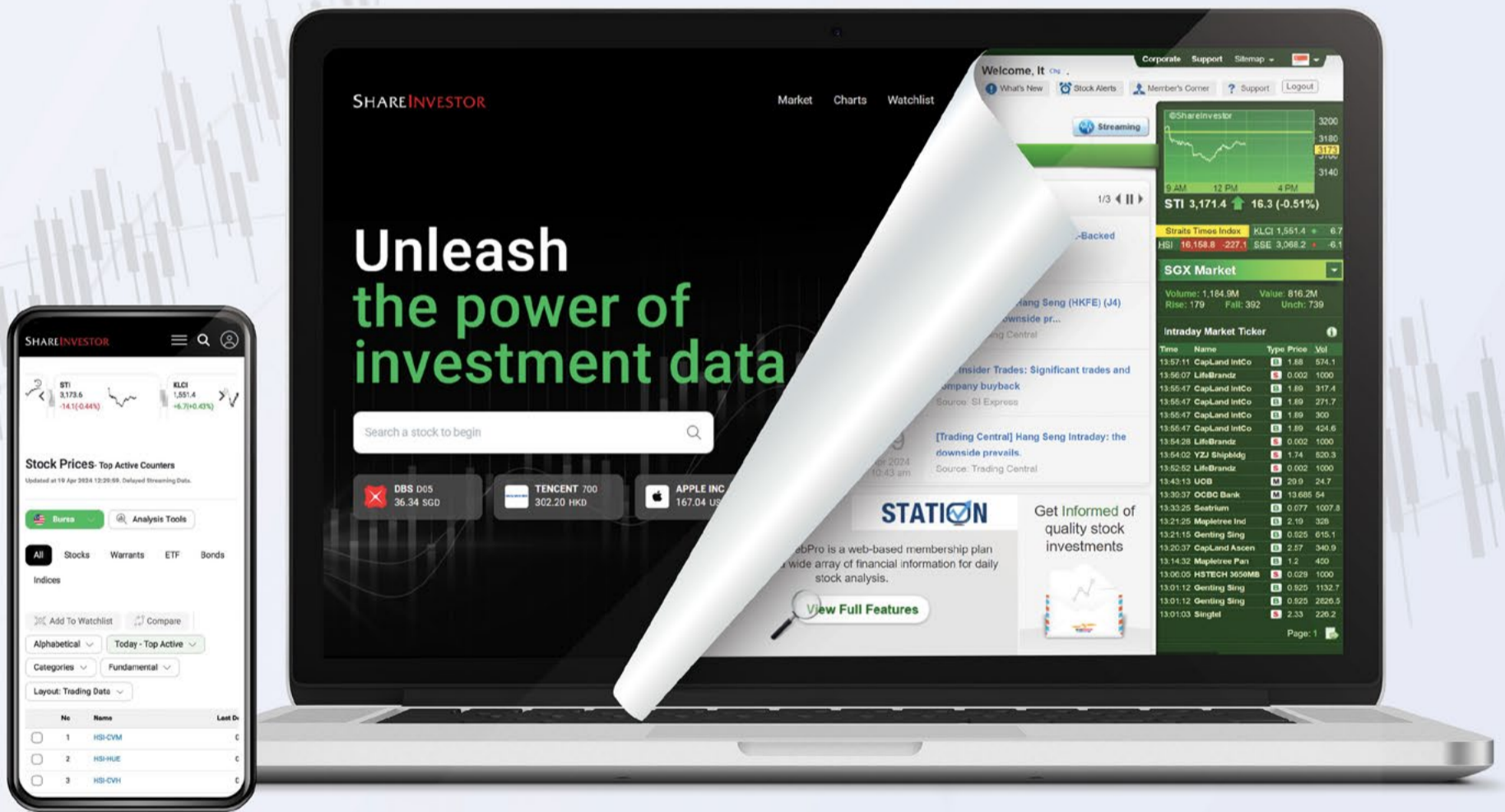
Disclaimer: 1. The Investor-One portfolio is aggregated for educational and illustration purposes only. It is curated based on fixed financial parameters as indicated above. The investor-one team select their stocks solely base on the these fixed parameters. The featured companies are for information only and does not constitute investment advice. 2. The investor-one team is not licensed by any financial authority in Singapore. You should consult your Trading Representative or Financial Advisors before making any financial decisions. 3. Current Price, current value and gain/loss (%) under current portfolio are based on 10 minutes delayed data. 4. Purchase Price and Exit Price are based on EOD price. 5. The views and opinions expressed does not necessarily reflect those of ShareInvestor Pte Ltd nor any related companies of ShareInvestor Pte Ltd.

SHAREINVESTOR®

An AlphaInvest Company

EXPERIENCE

The New ShareInvestor Website



**Advanced
Data
Visualizations**



**Comprehensive
Portfolio
Feature**



**Enhanced
Look &
Feel**



COMPANY SPOTLIGHT

ANALYST ALERT: Recommendation and Consensus on Soon Hock Enterprise Ltd, UltraGreen.ai Ltd, Centurion Corporation Ltd, Nam Cheong Ltd

Investor-One / Thu, Mar 5, 8:00 PM



Maybank Securities: [Soon Hock Enterprise Ltd](#)

Current Price: S\$0.62 (as of 5 Mar 2026)
Target Price: S\$0.78
Recommendation: BUY (Maintained)
Up/downside: +25.80%



Mean Target Price (SGD)			
0.730			
0.71	-	0.75	
Min		Max	
1.00	2	+0.090	+14.06
Consensus Rating	Number of Ratings	Upside	Upside (%)

continued... Analyst Alert: Recommendation and Consensus on Soon Hock Enterprise Ltd, UltraGreen.ai Ltd, Centurion Corporation Ltd, Nam Cheong Ltd

Soon Hock Enterprise Ltd (SHOCK SP) maintains a BUY with a higher TP of SGD0.78 after its briefing, as visibility on its development pipeline improves. The Skye@Tuas project, launching sales in 2Q26, is expected to drive FY26 net profit of SGD35.2m, while the Senang Crescent development project could support FY27 net profit of SGD49.1m. A planned 700–800 bed dormitory at 20 Shaw Road may add ~SGD4.95m annual rental income from FY28, and together with its 10% stake in 680 Upper Thomson Road, lifts RNAV to SGD241.5m, supporting the higher target price.

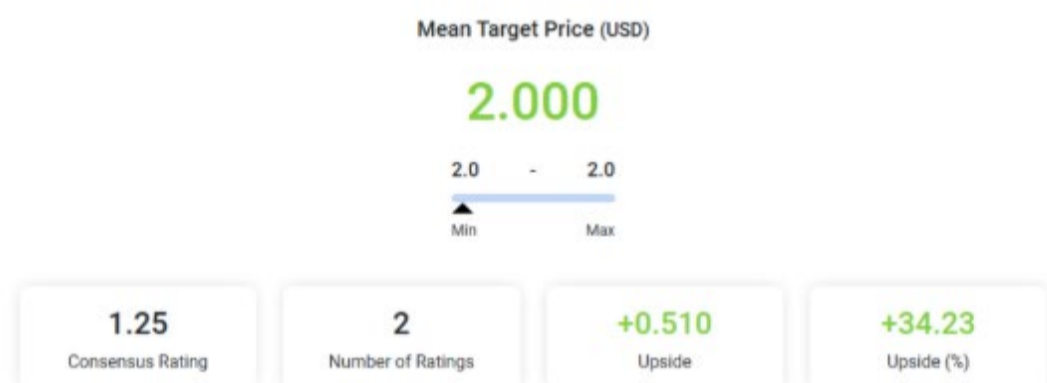
UOB KayHian: [UltraGreen.ai Ltd](#)

Current Price: US\$1.58 (as of 4 Mar 2026)

Target Price: US\$1.95

Recommendation: BUY (Maintained)

Up/downside: +23.42%



UltraGreen.ai delivered slightly better-than-expected 2025 results, with revenue rising 24% YoY to US\$142.4m and core PATMI increasing 14% YoY to US\$63.8m, reaching 101% and 106% of forecasts respectively, supported by stronger sales volumes, higher pricing and improved economies of scale that lifted gross margin to 85.0%. However, core PATMI margin declined 4.0ppt to 44.8% due to a US\$6.8m forex loss and higher reinvestment in global expansion, despite improved operating leverage. With a strong net cash position of US\$173m and management guiding 2026 revenue of US\$170m–190m (in line with the US\$173m forecast), implying over 20% YoY growth and reduced FX risk from a USD reporting shift in 2026, the

continued... Analyst Alert: Recommendation and Consensus on Soon Hock Enterprise Ltd, UltraGreen.ai Ltd, Centurion Corporation Ltd, Nam Cheong Ltd

BUY call is maintained with a slightly lower target price of US\$1.95.

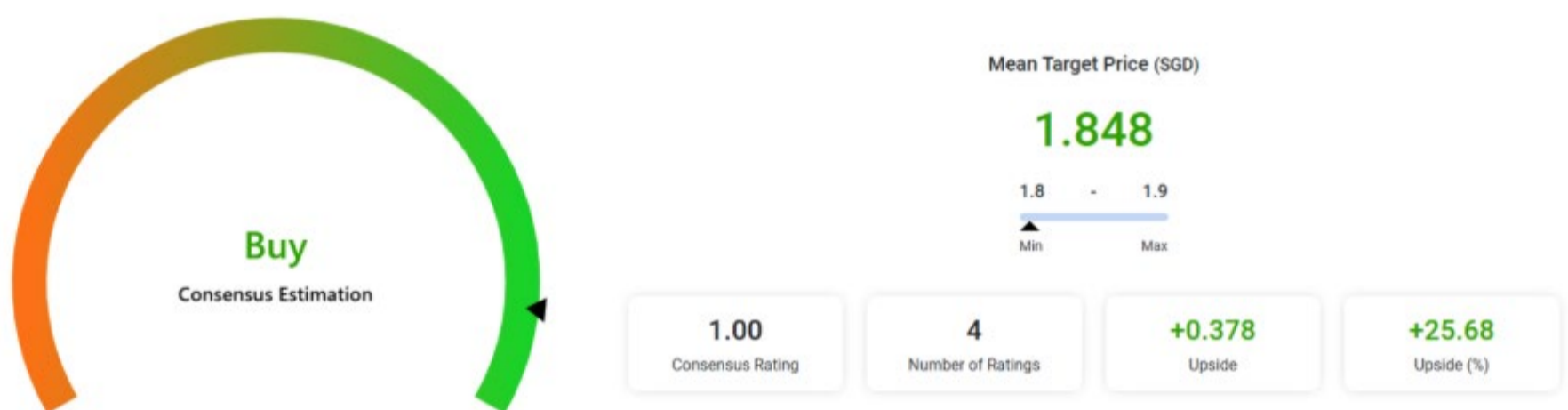
UOB KayHian: Centurion Corporation Ltd

Current Price: S\$1.51 (as of 3 Mar 2026)

Target Price: S\$1.90

Recommendation: BUY (Maintained)

Up/downside: +25.83%



Centurion Corporation delivered resilient FY2025 core performance despite lower headline earnings due to the absence of large 2024 property revaluation gains. Revenue rose 17% YoY to S\$296m, while core business profit increased 26% YoY to S\$139.2m, supported by strong Singapore PBWA earnings and near-full UK PBSA occupancy, though results were partly impacted by S\$51m in one-off IPO costs related to Centurion Accommodation REIT. The CAREIT listing strengthened the balance sheet and lowered gearing, enabling accelerated expansion, with over 8,900 beds added in 2025 and another 4,635 beds expected in 2026. With structural undersupply in worker and student housing across key markets supporting rental growth and occupancy resilience, CENT maintains a BUY call with a target price of S\$1.90 (25.8% upside).

continued... Analyst Alert: Recommendation and Consensus on Soon Hock Enterprise Ltd, UltraGreen.ai Ltd, Centurion Corporation Ltd, Nam Cheong Ltd

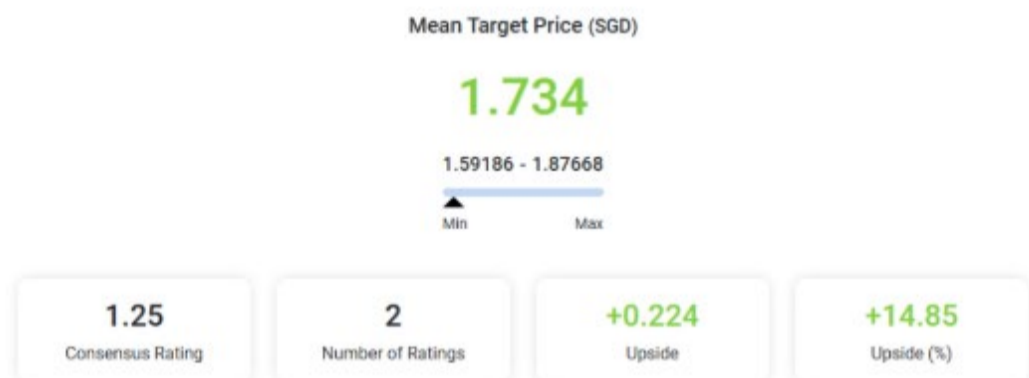
CGS International: Nam Cheong Ltd

Current Price: S\$1.42 (as of 3 Mar 2026)

Target Price: S\$1.92

Recommendation: ADD (Maintained)

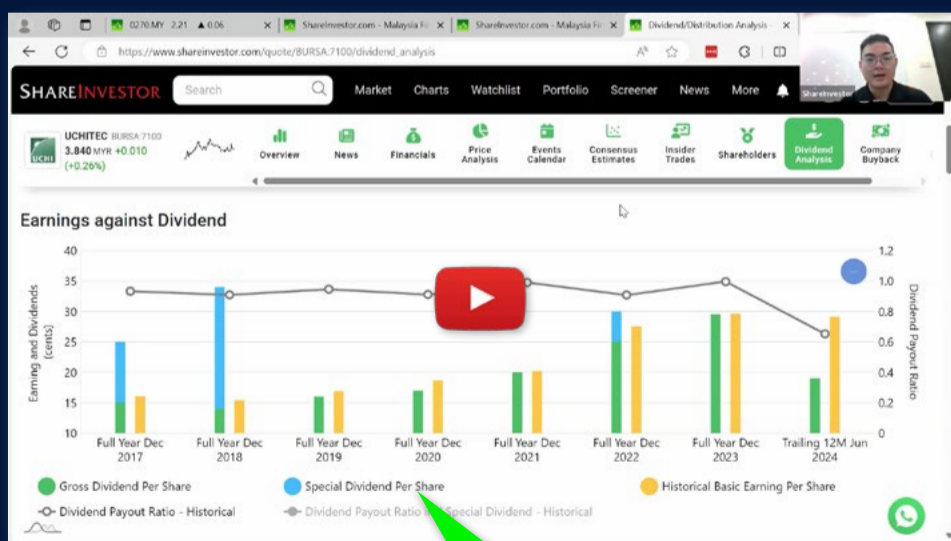
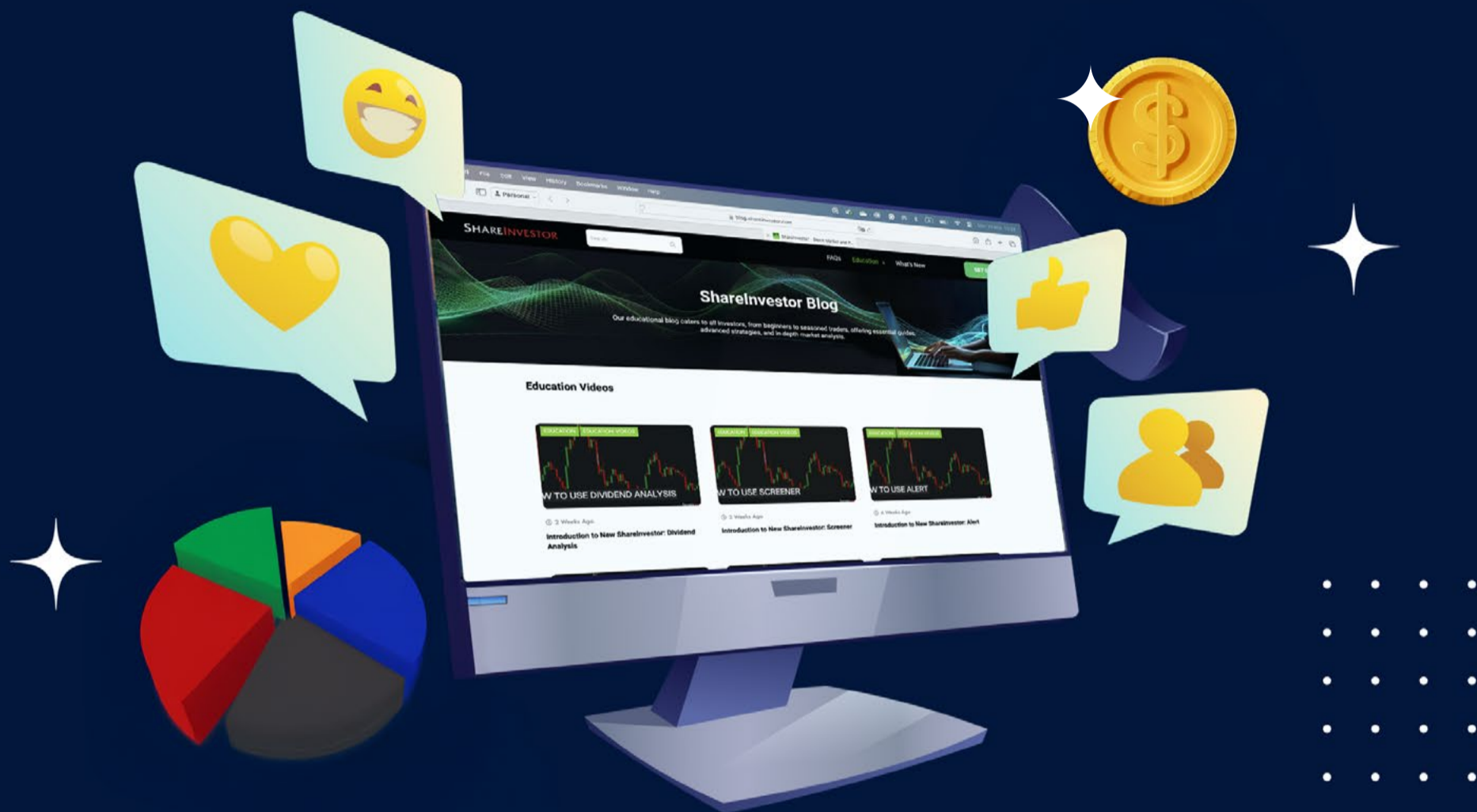
Up/downside: +35.21%



Nam Cheong Limited remains attractive on improving order momentum and fleet utilisation despite a softer FY25. Revenue fell 9% YoY to RM620m with gross margin dipping to 49% due to one-off maintenance costs, but disposal gains cushioned earnings and margins are expected to normalise from 1Q26F. Management is confident of securing more newbuild orders amid strong enquiries for fuel-efficient AHTS and PSVs, prompting higher FY26F/27F order win assumptions. Fleet utilisation is projected to rise to 69% in FY26F (vs. 65% in FY25) as long-term charters commence and new vessels are delivered, supporting earnings growth. The stock maintains an Add call with a higher target price of S\$1.92, backed by improving visibility and offshore upcycle momentum.

Disclaimer: This article is for informational purposes only and not intended as investment advice.

Ultimate Guide to use ShareInvestor



YOU WILL LEARN HOW TO USE:

- Company Financials
- Market Screener
- Company Insider Trades
- Dividend Analysis
- Consensus Estimation
and more...

**Watch
now!**

TOP SIGNIFICANT INSIDER ACTIVITY

Data extracted from WebPro, accurate as at yesterday

Effective Change Date (Notice Date)	Stock Name	Buyer / Seller Name (Classification *)	Security Types ^b	Acquired / (Disposed) ['000]			Price	Closing Price	No. of Shares After Trade ['000]				
				Direct	Deemed	Total			Direct	Deemed	Total	% Held	
02 Mar 2026 (04 Mar 2026)	HealthBank	FENG LI [SSH]	S/U	-12,605		-12,605		0.042					
03 Mar 2026 (04 Mar 2026)	Atlantic Nav	Saeed Investment Pte. Ltd. [SSH]	S/U	130,000		130,000		0.127	392,918		392,918		75.050
03 Mar 2026 (04 Mar 2026)	Atlantic Nav	Ong Bee Yong, Lynda [SSH]	S/U		130,000	130,000		0.127		392,918	392,918		75.050
03 Mar 2026 (04 Mar 2026)	Atlantic Nav	Kum Soh Har, Michael [SSH]	S/U		130,000	130,000		0.127		392,918	392,918		75.050
03 Mar 2026 (04 Mar 2026)	Atlantic Nav	Wong Siew Cheong [Dir/CEO]	S/U	-130,000		-130,000		0.127	36,599	33,375	69,974		13.370
02 Mar 2026 (04 Mar 2026)	AEM SGD	EMPLOYEES PROVIDENT FUND BOARD [SSH]	S/U		-6,451	-6,451		2.980		15,957	15,957		5.072
04 Mar 2026 (04 Mar 2026)	Avi-Tech Hldg	Lim Tai Meng Alvin [Dir/CEO]	S/U	80		80		0.171	200		200		0.117
05 Feb 2026 (04 Mar 2026)	JMH USD	Lincoln PAN [Dir/CEO]	S/U	7		7	USD 75.8	77.600					
03 Mar 2026 (04 Mar 2026)	UnUsUaL	HILDRICS ASIA GROWTH FUND VCC [SSH]	S/U	2,200		2,200	0.026	0.025	64,380		64,380		6.310
03 Mar 2026 (04 Mar 2026)	UnUsUaL	WEE TENG CHUEN [SSH]	S/U		2,200	2,200	0.026	0.025		64,380	64,380		6.310
03 Mar 2026 (04 Mar 2026)	UnUsUaL	CHOO KEE SIONG [SSH]	S/U		2,200	2,200	0.026	0.025		64,380	64,380		6.310
03 Mar 2026 (04 Mar 2026)	UnUsUaL	HILDRICS CAPITAL PTE. LTD. [SSH]	S/U		2,200	2,200	0.026	0.025		64,380	64,380		6.310
02 Mar 2026 (04 Mar 2026)	UnUsUaL	HILDRICS ASIA GROWTH FUND VCC [SSH]	S/U	1,000		1,000	0.027	0.027	62,180		62,180		6.090
02 Mar 2026 (04 Mar 2026)	UnUsUaL	WEE TENG CHUEN [SSH]	S/U		1,000	1,000	0.027	0.027		62,180	62,180		6.090
02 Mar 2026 (04 Mar 2026)	UnUsUaL	CHOO KEE SIONG [SSH]	S/U		1,000	1,000	0.027	0.027		62,180	62,180		6.090
02 Mar 2026 (04 Mar 2026)	UnUsUaL	HILDRICS CAPITAL PTE. LTD. [SSH]	S/U		1,000	1,000	0.027	0.027		62,180	62,180		6.090
04 Mar 2026 (04 Mar 2026)	Centurion	Han Seng Juan [Dir/CEO]	S/U	400		400	1.444	1.430	36,101	433,704	469,804		55.877
03 Mar 2026 (04 Mar 2026)	Centurion	Loh Kim Kang David [Dir/CEO]	S/U	500		500	1.500	1.470	78,469	425,956	504,425		59.995
04 Mar 2026 (04 Mar 2026)	Top Glove	MR LIM HOOI SIN [SSH]	S/U	2,000	2,000	4,000		0.178	126,478	2,917,733	3,044,211		37.967
04 Mar 2026 (04 Mar 2026)	Top Glove	PUAN SRI TONG SIEW BEE [SSH]	S/U		4,000	4,000		0.178	17,563	3,026,848	3,044,411		37.970
04 Mar 2026 (04 Mar 2026)	Top Glove	MR LIM JIN FENG [SSH]	S/U		2,000	2,000		0.178	200	2,917,733	2,917,933		36.392
04 Mar 2026 (04 Mar 2026)	Top Glove	TAN SRI DR LIM WEE CHAI [SSH]	S/U	2,000	2,000	4,000		0.178	2,317,302	727,108	3,044,411		37.969
03 Apr 2026 (04 Mar 2026)	Top Glove	MR LIM HOOI SIN [Dir/CEO]	S/U	2,000	2,000	4,000	MYR 0	0.178	126,478	2,917,733	3,044,211		37.967
03 Apr 2026 (04 Mar 2026)	Top Glove	TAN SRI DR LIM WEE CHAI [Dir/CEO]	S/U	2,000	2,000	4,000	MYR 0	0.178	2,317,302	727,108	3,044,411		37.969
04 Mar 2026 (04 Mar 2026)	IFS Capital	Randy Sim Cheng Leong [Dir/CEO]	S/U	200		200		0.185	7,008		7,008		1.864
02 Mar 2026 (04 Mar 2026)	GuocoLand	Quek Leng Chan [Dir/CEO]	S/U		-33	-33		2.640		850,376	850,376		71.860
02 Mar 2026 (04 Mar 2026)	GuocoLand	Quek Leng Chan [Dir/CEO]	S/U		-38	-38		2.640		850,338	850,338		71.860
03 Mar 2026 (04 Mar 2026)	IFS Capital	Randy Sim Cheng Leong [Dir/CEO]	S/U	250		250		0.191	6,808		6,808		1.811
03 Mar 2026 (04 Mar 2026)	Golden Agri-Res	Silchester International Investors LLP [SSH]	S/U		-6,857	-6,857	0.290	0.290		883,751	883,751		6.970
02 Mar 2026 (04 Mar 2026)	GuocoLand	Cheng Hsing Yao [Dir/CEO]	S/U,R/O/W	63		63		2.640	1,764		1,764		0.150

Disclaimer: The information on this page is provided as a service to readers. It does not constitute financial advice and/or any investment recommendations. Past performance is not indicative of future results. We assume no liability for damages resulting from or arising out of the use of such information. It would be best if you did your own research to make your personal investment decisions wisely or consult a licenced investment advisor.



Protect yourself with the ScamShield Suite



ScamShield Helpline
Call to check if something is a scam



ScamShield app
Check, detect and block scams



scamshield.gov.sg
One-stop portal on scams



ScamShield Alert social channels
Receive the latest information on scams



IR Announcements



Parkway Life REIT: Secures Maiden Social Loan & Issues Inaugural Green Bond Under Sustainable Financing Framework.

Maiden 10-year JPY8.8 billion social loan supports financing of healthcare and aged care infrastructure that strengthens healthcare systems and alleviates pressure on public services. Successfully priced 5-year SGD70.0 million green bond at attractive fixed-rate coupon of 2.103%. Proceeds shall fully refinance loans maturing in 4Q 2026, eliminating any long-term debts refinancing needs until March 2027.

[READ MORE !\[\]\(40ff4926cc4e80920dcd6e30a3ae173f_img.jpg\)](#)

Seatrium: To Achieve Over S\$50 Million In Operational Cost Savings Through Non-Core Asset Divestments By Early 2026.

Seatrium Limited wishes to announce a series of additional divestments, as well as update on an earlier transaction, as part of its ongoing efforts to rationalise non-core assets, streamline operations, and drive long-term value for shareholders.

[READ MORE !\[\]\(23c95a79ea2fdecb85c88c5fd848f31c_img.jpg\)](#)

Oiltek: Kickstarts 2026 With RM37.2 Million Worth Of New Contracts Secured Across Global Markets Including The Philippines, Africa, Pakistan & Malaysia.

New contracts from the Philippines, Pakistan, Africa, and Malaysia emphasise the strength of the Group's geographically diversified business. Including the new contracts, the Group's current order book of approximately RM350.0 million is to be fulfilled over the next 18 to 24 months barring any unforeseen circumstances.

[READ MORE !\[\]\(1697b9d573570acb8a28fd07740c0f00_img.jpg\)](#)

CapitaLand Ascott Trust: Strengthens Stable Income Streams With Acquisition Of 3 Rental Housing Properties In Japan For JPY4.6 Billion.

CapitaLand Ascott Trust has acquired three freehold rental housing properties in Southern Kanagawa, Greater Tokyo, Japan for a total consideration of JPY4.6 billion (S\$38.3 million) from an unrelated third party. The three operating properties, Lime Residence Hiratsuka West, Lime Residence Hiratsuka East and Live Casa Hiratsuka, were built between two and four years ago. The properties have an average occupancy of over 95% and average lease terms of about two years, providing stable income.

[READ MORE !\[\]\(bd5e5d34239052db0cfe5dd2787ea572_img.jpg\)](#)



IR Announcements



Elite UK REIT: Returns To FTSE Global Micro-Cap Index & FTSE Global Total Cap Index.

Elite UK REIT has been added into the FTSE Global Micro-Cap Index and FTSE Global Total Cap Index. This addition is indicative, constituent changes will be effective after the close of business on Friday, 20 March 2026. Elite UK REIT was previously excluded from these FTSE indices on 23 August 2024, as the REIT did not meet liquidity requirements. Since then, the REIT's 1-year average daily turnover has improved 2.5 times, while market capitalisation improved 48% to GBP225.8 million as at 20 February 2026.

[READ MORE](#)

APAC Realty: Posts 214% Surge In FY2025 Profit, Recommends 1.8 Cent Per Share Final Dividend.

Improved performance on the back of 20.4% revenue growth for FY2025, primarily driven by robust activity in new private residential segment. ERA Vietnam recorded improved revenue and financial performance in 2025. Final dividend of 1.8 Singapore cent per share, representing a dividend yield of 6.3%. Maintains healthy cash balance at S\$50.4 million as of 31 December 2025.

[READ MORE](#)


Soon Hock: Delivers Outstanding Maiden Results, FY2025 NPAT Up More Than 10 Times As Revenue Increases 28-Fold.

Strong topline performance driven mainly by the property development segment due to revenue recognition from the receipt of partial TOP for the first 8 levels of Stellar@Tampines in FY2025. Revenue rises to S\$227.9 million in FY2025 from S\$7.9 million in FY2024. NPAT jumps 10.6 times in line with higher revenue to reach S\$37.9 million. Proposes final tax-exempt dividend of 3.05 Singapore cents per share for FY2025, representing 25.0% of NPAT.

[READ MORE](#)

Centurion Accommodation REIT: FP 2025 DPU Of 1.739 Cents Outperforms Forecast By 6.7%.

Net property income of S\$36.1 million for FP 2025 was 4.1% ahead of Forecast, primarily attributable to higher rental rates achieved across the Purpose-Built Worker Accommodation portfolio and higher financial occupancy across the PBWA and Purpose-Built Student Accommodation portfolio. Portfolio stability anchored by high financial occupancy, with PBWA and PBSA assets achieving 97.6% and 99.1% financial occupancy respectively, reflecting resilient demand across the entire portfolio. Maintained a healthy aggregate leverage of 30.7% following the acquisition of Epiod Macquarie Park, with debt headroom of S\$348.0 million based on a 40% leverage threshold, to fuel organic growth and inorganic pipeline.

[READ MORE](#)




IR Announcements

[SIGN UP FOR
INVEST WEEKLY](#)

UOB: FY25 Operating Profit At S\$7.7 Billion.

UOB Group reported an operating profit of S\$7.7 billion for the financial year ended 31 December 2025, driven by strong fee momentum across the wholesale banking and retail banking businesses. Net profit for FY25 moderated 23% to S\$4.7 billion from the previous year, largely due to the pre-emptive general allowances that the Group proactively set aside in the third quarter to strengthen provision coverage amid growing macroeconomic uncertainties.

[READ MORE](#)

Tiong Woon: Secures & Advances Multiple Projects Across Semiconductor, Public Infrastructure & Biopharmaceutical Sectors.

Tiong Woon Corporation Holding Ltd is pleased to announce ongoing and new execution of three projects across semiconductor, public infrastructure and biopharmaceutical sectors with an estimated combined value of over \$40 million. These projects, expected to be completed over the next two financial years, reflect continued customer confidence in the Group's technical capabilities, diversified lifting fleet and proven track record in supporting complex, high-specification developments across a broad range of industries.

[READ MORE](#)

TIONG WOON CORPORATION HOLDING LTD



Genting SP: Reports FY2025 Results.

Genting Singapore Limited announced its financial results for the year ended 31 December 2025. The Group reported revenue of \$2,452.1 million and adjusted earnings before interest, tax, depreciation and amortisation of \$815.8 million for FY2025. FY2025 results reflected the impact of asset enhancement works at Resorts World Sentosa, and the gradual improvement in operating momentum as refreshed offerings across the resort were phased into operations.

[READ MORE](#)

OUE REIT: Makes Yield-Accretive Strategic Entry To Sydney's CBD With 19.9% Interest In Salesforce Tower At A\$357.2 Million.

Strategic expansion into prime Sydney CBD office anchors OUE REIT's next growth phase with enhanced portfolio quality and geographical diversity. Distribution per unit accretive acquisition opportunity of a rare prime freehold office asset in Sydney CBD's Core Precinct, with nearly full occupancy, long Weighted Average Lease Expiry and strong Environmental, Social, and Governance credentials. Attractive potential upside for Sydney's CORE CBD commercial segment, underpinned by tightening prime supply, improving rents and sustained flight-to-quality demand. Proposed acquisition is expected to deliver DPU accretion of 0.9%. OUE REIT's portfolio exposure in Singapore remains high at 94.9% post-acquisition.

[READ MORE](#)



IR Announcements



OKP Holdings: Records 33% Growth In Profit To S\$43.6 Million.

Achieves record revenue of S\$223.5 million, up 22.9%, driven by strong performance from both construction and maintenance segments. Healthy order book of S\$588.0 million, with revenue visibility extending to 2031. Strong balance sheet, with an increase in free cash and cash equivalents to S\$155.9 million, up from S\$124.3 million as at 31 December 2024. Higher quantum of total dividends proposed, following the recent bonus issue, at 2.0 Singapore cents per share, consisting of final dividend of 0.7 Singapore cent per share and special dividend of 1.3 Singapore cents per share.

[READ MORE !\[\]\(ddec2cbbac1319bb1377b96771b151ee_img.jpg\)](#)

Delfi: Reports FY2025 Net Sales Of US\$500.1 Million & PATMI Of US\$33.2 Million Despite Industry Challenges.

Strong performance in Own Brands with Net Sales growth of 4.9%. Proposes final dividend of 1.72 US cents, which together with the interim dividend of 1.00 US cents, would bring total dividend in respect of FY2025 to 2.72 US cents per ordinary share.

[READ MORE !\[\]\(36ae4faeebb9990a53c2e82b8e205923_img.jpg\)](#)

First Sponsor: Reported A Net Loss Of S\$97.7 Million & S\$78.8 Million For 2H2025 & FY2025 Respectively.

The Board recommended a final tax-exempt (one-tier) cash dividend of 3.69 Singapore cents per share for FY2025. If approved, the total dividend declared for FY2025 will be 4.79 Singapore cents per share, representing a 3% growth from FY2024. This reflects the Board's confidence in the long-term prospects of the Group, notwithstanding the prolonged challenging market conditions in the PRC and the accounting losses reported for 2H2025 and FY2025.

[READ MORE !\[\]\(59e4e94ef536f221d5c47f9cdea485d8_img.jpg\)](#)

Stoneweg Europe Stapled Trust: Delivers Strong Net Property Income Growth In FY2025.

FY 2025 distribution per stapled security of 13.39 Euro cents, at the upper end of market expectations. 2H 2025 DPS of 6.837 Euro cents, 4.3% higher than 1H 2025. Net property income up 2.5% vs. prior corresponding period, like-for-like NPI up 5.0%, boosted by the 9.2% like-for-like growth in the logistics/light industrial sector. No debt maturities until 2030 with weighted average cost of debt at a competitive 3.86%. 38.0% net gearing with EUR325 million of cash and committed undrawn credit facilities available. SERT positioned for long-term growth through early investment in AiOnX and the Sponsor's strategic exposure to high-growth data centres and AI ecosystem.

[READ MORE !\[\]\(66657577d001ac605fc47acbcba45beb_img.jpg\)](#)



IR Announcements



MegaChem: Reports Net Profit After Tax Of S\$3.9 Million & Proposes Final Dividend Of 0.5 Cents Per Share.

Revenue decreased 3.4% to S\$124.4 million due to softer demand for chemicals amid macroeconomic and geopolitical headwinds. Maintains healthy financial position with net gearing ratio of 0.34 times. Including an interim dividend of 0.5 cents per share, total dividend for the full year of FY2025 totalled 1.0 cents per share.

[READ MORE](#)

LMIR Trust: Caps Off FY2025 With Sustained Operational Recovery, Gross Revenue Rises 5.4% To S\$205 Million On Higher Occupancy Of 86.5%.

Active asset rejuvenation and tenant optimisation support leasing momentum, with portfolio occupancy rising to 86.5% from 81.2% in the prior year. Disciplined capital management with gearing at a stable 43.54% as at end Dec 2025. Oversubscribed rights issue concluded in January 2026 with proceeds mainly for debt repayment, further strengthening capital structure. LMIR Trust to adopt a new corporate identity as Landmark REIT, with the Manager concurrently rebranded as Landmark REIT Management Ltd.

[READ MORE](#)


LIPPO MALLS INDONESIA RETAIL TRUST

Yangzijiang: FY2025 Net Profit Up 30.2% To A New High Of RMB8.6 Billion, Raises Dividend Payout To 50%.

Revenue rose 7.4% yoy to RMB28.5 billion in FY2025, primarily driven by progressive construction of vessels secured at higher prices. Gross profit grew by 28.3% yoy to RMB9.8 billion while gross profit margin expanded by 5.5 pts to 34.2%, mainly supported by stronger newbuild pricing and lower raw material costs. Proposes a final dividend of 20 Singapore cents per ordinary share for FY2025, translating to a 50% payout ratio and a 5.7% dividend yield. Sees healthy order momentum in early 2026 and continues to prioritise securing orders for the remaining 2029 delivery slots while progressively opening up 2030 positions.

[READ MORE](#)


Yangzijiang Shipbuilding (Holdings) Ltd.
扬子江船业(控股)有限公司

HRnetGroup: Double-Digit Growth In Earnings & Dividends For FY2025 Financial Results.

HRnetGroup Limited reports a 14.3% increase in NPAT to S\$52.9m, on 3.0% revenue growth to S\$584.0m. The Directors propose a 10% higher Final Dividend of 2.2 cents per share. Full year total dividend of 4.2 cents represents a yield of 5.6%, a 78% payout of NPAT, and 79% of free cash flow.

[READ MORE](#)




IR Announcements



Food Empire: Delivers Fifth Consecutive Year Of Record Revenue With NPAT At All-Time High In FY2025.

Revenue surpasses half-a-billion USD for the first time to reach US\$576.9 million in FY2025. EBITDA crosses USD\$100 million mark to a new record of US\$113.5 million. NPAT surges 37.0% to an all-time high of US\$68.6 million. Record dividend of S\$0.12 for FY2025, proposes final dividend of S\$0.05 and a special dividend S\$0.04 per share, on top of the interim dividend of S\$0.03 already paid.

[READ MORE](#)

Riverstone: 4QFY25 Net Profit Rises 3.7% Q-o-Q To RM54 Million On Resilient Cleanroom Demand From AI Infrastructure Despite FX Impact.

Revenue for 4QFY25 increased by 1.3% q-o-q to RM250.7 million, supported by growing cleanroom demand from AI infrastructure and modest sales growth in the healthcare segment. Gross profit moderated by 3.0% q-o-q to RM74.2 million in 4QFY25, with gross margin narrowing 1.3 ppts to 29.6%, primarily due to foreign exchange impact arising from the strengthening of Malaysia ringgit against US dollar. Proposes a final dividend of 5.0 sen (RM) per ordinary share and a special dividend of 4.0 sen (RM) per ordinary share. Total FY25 dividend reaches 17.0 sen (RM), translating to a 121.3% payout and a 6.9% yield. Remains strategically focused on the cleanroom and customised healthcare glove segments, which show sustained momentum, while staying selective in the generic healthcare segment amid a more competitive environment.

[READ MORE](#)


Seatrium: Doubles FY2025 Net Profit To S\$324 Million Lifted By Margin Expansion.

Revenue grows 24% to S\$11.5B. Net profit grows 106% to S\$324M on stronger margins. Robust S\$17.8B net Order Book. Pursuing S\$32B pipeline deals over next 24 months. 3.0 cents final dividend proposed for FY2025, doubled from FY2024.

[READ MORE](#)

Mapletree Industrial Trust: Issue of S\$300 Million 3.25% Perpetual Securities.

Mapletree Industrial Trust has executed a pricing supplement to issue S\$300,000,000 in principal amount of 3.25% fixed rate perpetual securities. The Perpetual Securities will be issued under the S\$2,000,000,000 Euro Medium Term Securities Programme. DBS Bank Ltd. and Oversea-Chinese Banking Corporation Limited have been appointed as the joint lead managers for the Perpetual Securities.

[READ MORE](#)


IR Announcements



Sasseur REIT: Delivered Robust FY2025 Performance With 2H DPU Surging 5.3% YoY.

EMA Rental Income in RMB increased 3.3% and 2.7% YoY in 2H and FY2025 respectively. Chongqing Liangjiang Outlet achieved record annual sales of RMB2.5 billion in FY2025. Well-laddered debt profile with cost of debt further reduced to 4.4%.

[READ MORE](#)

17LIVE: Returns To The Black In 2H2025 With Profit After Tax Of US\$3.7 Million.

FY2025 Revenue reached US\$158.8 million, reflecting resilient performance and stabilizing core business trends despite foreign exchange volatility. Achieved first positive full-year Profit Before Tax, US\$1.2 million, since listing on the SGX, marking a major milestone in the Group's financial turnaround. Sustained cost discipline led to 2H2025 Profit After Tax of US\$3.7 million, and a robust cash position of US\$73.4 million, supported by positive operating cash flow, which will fuel the next phase of the "17LIVE Forward Strategy". Accelerated AI-Driven Innovation and Revenue Diversification, with new businesses having contributed 12.0% of revenue in 2025 and planned commercial release of Short-form Drama in the Japan market in 1H 2026.

[READ MORE](#)



Uni-Asia: Net Profit After Tax Of US\$0.8 Million Achieved Amid Fleet Renewal & Operational Challenges.

Investment returns supported profitability despite lower charter income during fleet renewal. Final dividend of 1.0 Singapore cent per share proposed.

[READ MORE](#)

Venture: Reports Sequential Quarter Growth & Proposes Final Dividend Of 50 Cents Per Share, Bringing FY2025 Total Dividend To 80 Cents Per Share.

4Q 2025 revenue and net profit rose quarter-on-quarter as strategic initiatives gained traction. FY2025 dividend of 80 cents per share represents 6.7% increase against FY2024. The higher dividend and share buyback plan executed over 2025 reflects Venture's continued commitment to enhancing total shareholder return.

[READ MORE](#)





IR Announcements

[SIGN UP FOR
INVEST WEEKLY](#)

TIH: Reports Total Comprehensive Income Of S\$9.94 Million For FY2025 Financial Results.

Recurring fee income from fund management business was S\$4.41 million, compared to S\$5.77 million in FY2024. Higher net asset value of S\$144.02 million. Proposes final dividend of 1.0 Singapore cent per share.

[READ MORE](#)

CSE Global: FY2025 Revenue Up 12.5% to S\$968.9 Million, Net Profit Grew 42.3% To S\$37.5 Million In FY2025.

Revenue growth led by Electrification and Communications business segments. Net profit up 42.3% to S\$37.5 million. Records S\$1.0 billion order intake in FY2025. Robust order book of S\$709.5 million as at 31 December 2025. Board recommends a final one-tier tax-exempt dividend of 1.46 Singapore cents per ordinary share, bringing total dividend payout to 2.60 Singapore cents for FY2025.

[READ MORE](#)

Centurion: Reports 26% Growth In FY2025 Net Profit From Core Business Operations To S\$139.2 Million.

FY 2025 revenue increased 17% YoY to S\$295.9 million, driven by healthy rental revisions across markets and strong financial occupancies in Singapore and the UK. Net Profit After Tax Attributable to Equity Holders was S\$114.8 million in FY 2025, lower by 67% YoY, mainly due to a lower fair value gain on investment properties compared to FY 2024 as well as costs incurred in relation to the IPO of CAREIT. Healthy portfolio pipeline of multiple developments, with new bed capacities expected to be completed by 2026, 2027, and 2028. The Board has recommended a final dividend of 2.0 Singapore cents per share, and a special Distribution In Specie of one CAREIT unit for every ten Centurion shares.

[READ MORE](#)

Union Gas: Delivers Highest Topline Since Listing, Proposes Final Dividend Of 1 Singapore Cent Per Share.

Achieves 9.9% revenue growth to S\$137.9 million driven by higher liquid fuel sales and new income stream from service stations. Liquid fuel business and EV charging services and industrial gases business delivers strong revenue growth of 93.9% and 571.2%, respectively. Proposes final dividend of 1.00 Singapore cent per share for FY2025, bringing total full year dividend to 1.48 Singapore cents per share.

[READ MORE](#)



IR Announcements



Asian Pay Television Trust: Announces Results For The Quarter & Year Ended 31 December 2025.

Added c.11,000 net subscribers in the quarter, lifting total subscriber base to c.1,384,000. Strong Broadband growth momentum, Subscribers up c.9,000 in the quarter, revenue up 10.7% for the quarter and 9.4% for the year. Revenue and EBITDA at \$62.6 million and \$33.3 million for the quarter, and \$245.7 million and \$135.5 million for the year. EBITDA margin at 53.2% for the quarter and 55.2% for the year.

[READ MORE](#)

Yanlord: Reports Profit Attributable To Owners Of The Company Of RMB268 Million For FY2025.

The Group's revenue for FY 2025 was RMB14.369 billion, a decrease of 60.5% compared to FY 2024. The Group's gross profit increased by 16.7% to RMB4.004 billion, with gross profit margin rising by 18.5 percentage points to 27.9% in FY 2025, compared to gross profit margin of 9.4% in FY 2024. The Group reported a profit for the year of RMB435 million in FY 2025, reversing a loss of RMB3.763 billion in FY 2024. Profit attributable to owners of the Company was RMB268 million in FY 2025, compared to a loss of RMB3.422 billion in FY 2024. The Board of Directors of the Company has proposed a final tax-exempt dividend of 1.0 Singapore cent, equivalent to 5.47 Renminbi cents, per ordinary share, amounting to approximately RMB106 million.

[READ MORE](#)


InnoTek: Achieves 10th Consecutive Year Of Profitability In FY'25, Accelerates Foray Into AI Server Sector, Declares Dividend Of 2 Singapore Cents Per Share.

InnoTek Limited proposed a first and final dividend of 2.0 Singapore cents per share on the back of its tenth consecutive year of profitability, even as it accelerates its foray into GPU server-related products for the artificial intelligence sector. InnoTek had been approved as a recommended vendor for NVIDIA Corporation and IEIT Systems in October 2025, with mass production for GPU server components commencing in the last quarter of 2025.

[READ MORE](#)

UltraGreen.ai: Delivers 24% Revenue Growth In FY2025 To US\$142.4 Million.

NPAT, before exceptional items, margin of 44.8%, with NPAT of US\$63.8 million, up 14% YoY. Adjusted EBITDA margin of 62.8%, US\$89.4 million Adjusted EBITDA, and gross margin of 85%. 13% YoY growth in vial volumes, driving robust revenue expansion. FY2026 revenue forecast of US\$170-190 million, representing 19%-33% YoY growth.

[READ MORE](#)




IR Announcements



Thakral: Reports Highest Ever Attributable Profit Of S\$170.9 Million For FY2025, Unlocking Value Through 2 Successful IPOs.

Lifestyle segment revenue increased 29% to S\$352.1 million, led by consistent and strong demand across Greater China and South Asia. Meaningful progress on the India mixed-use healthcare-led real estate project, with the Group shortlisting a tier-1 hospital operator to advance development and de-risk execution. Positive outlook ahead as the Group expands its retail presence in Greater China and South Asia. Lifestyle segment expected to expand by approximately 25% in FY2026. Second interim dividend of 3.5 cents declared, translating to a dividend yield of 4.1% for FY2025.

[READ MORE](#)

AIMS APAC REIT: Issue Of S\$100 Million 4.25% Perpetual Securities.

AIMS APAC REIT has priced on 26 February 2026 the S\$100 million 4.25 per cent. perpetual securities. The Perpetual Securities will be issued under the S\$750,000,000 Multicurrency Debt Issuance Programme. DBS Bank Ltd., Oversea-Chinese Banking Corporation Limited and United Overseas Bank Limited have been appointed as joint lead managers and bookrunners for the Perpetual Securities.

[READ MORE](#)


EC World REIT: Reported Lower Operating Performance In FY2025.

Lower operating performance year-on-year. No distribution for FY2025. Portfolio valuation declined by 21.2% year-on-year in RMB terms.

[READ MORE](#)

IREIT Global: Reports DPU Of EUR1.09 Cents For FY2025 As Repositioning Of Berlin Campus Is Ongoing.

FY2025 results affected by vacancy at Berlin Campus after the lease expiry of main tenant on 31 December 2024. Portfolio occupancy rate was 89.4% as at 31 December 2025, an improvement from 88.5% achieved a year ago. Construction works for first phase of repositioning project progressing well and targeted to complete in the second quarter of 2027. Successfully refinanced German Portfolio in October 2025 to extend maturity to July 2029 and is targeting to finalise refinancing agreement for Spanish Portfolio in the second half of 2026.

[READ MORE](#)




IR Announcements



PropNex: FY2025 Earnings Soar 72.0% To S\$70.4 Million As Revenue Hits S\$1.1 Billion.

Delivers strongest full-year revenue, earnings and dividend in the Group's 25-year history. Proposes a final cash dividend of 4.5 cents per share in FY2025, full year dividend stands at 9.5 cents per share, which reflects a dividend payout ratio of 99.9% and dividend yield of 5.1%. Expects a good performance in FY2026 driven by revenue recognition from strong new private home sales in 4Q2025, an expanded salesforce and continued stability and sales momentum in the housing market into 2026.

[READ MORE !\[\]\(ce7c5d6a792a8783ba1f4b0eeb0acbd0_img.jpg\)](#)

Seatrium: Successfully Delivers Next-Generation WTIV.

Seatrium Limited is pleased to announce the successful delivery of the next-generation Wind Turbine Installation Vessel, which was handed over to its customer, Maersk Offshore Wind, on 26 February 2026. This milestone follows the successful completion of sea trial activities and final readiness evaluations at the Group's flagship Tuas Boulevard Yard. This also marks a significant achievement for Seatrium and underscores the Group's growing contribution to advancing the global offshore wind industry.

[READ MORE !\[\]\(c2c0fb2e55e2f29a54aed2574f151d70_img.jpg\)](#)

CapitaLand Ascendas REIT: Deepens Europe Portfolio With Accretive Acquisition Of 6 Prime Logistics Assets In Spain For S\$185.4 Million.

CapitaLand Ascendas REIT has deepened its presence in Europe with its first acquisition of a prime logistics portfolio in Spain for a total gross purchase consideration of approximately S\$185.4 million (EUR124.0 million). The Portfolio comprises two Grade A logistics assets in Madrid, Spain's capital, and four Grade A logistics properties in Barcelona, Spain's second largest city.

[READ MORE !\[\]\(c8c4741e5bbb8d2e224fad5bba5aa52e_img.jpg\)](#)

Daiwa House Logistics Trust: Posted DPU Of 4.33 Cents For FY2025.

Continued to expand portfolio in FY2025 with the acquisition of 19th property. Aggregate leverage of 40.2% and interest coverage ratio of 5.5x at healthy level. Entered into its first sustainability-linked loan for a S\$30 million facility.

[READ MORE !\[\]\(cf1eceaa74f80980debbf159597f9174_img.jpg\)](#)



IR Announcements



Fraser's Property: Awarded Collective Sale Tender For Leasehold Rear Plot Of The Centrepont On Singapore's Iconic Orchard Road For S\$391.9 Million.

Acquisition consolidates Fraser's Property's ownership of the leasehold rear plot of The Centrepont with 132 strata units, strengthening its position along Singapore's premier shopping belt. Underscores the Group's confidence in the long-term value of sites with strong locational attributes.

[READ MORE](#)

Attika: Reports 19.3% Growth In FY2025 Net Profit To S\$3.4 Million, Aims To Distribute Dividend Payout Of 35% For FY2026 & FY2027.

Gross profit margin expanded to 20.5% in FY2025 from 15.1% in FY2024. Secures two new contracts totalling S\$12.0 million for interior fit-out works. Proposes a final dividend of 1.1029 Singapore cents per share. Targets to pay out 35% of net profit attributable to owners for FY2026 and FY2027.

[READ MORE](#)


BHG Retail REIT: FY2025 Community-Centric Strategy Supports Asset Performance, Creating Value Through Everyday Experiences.

In FY 2025, BHG Retail REIT registered a gross revenue of S\$55.1 million, net property income of S\$29.0 million, and amount to be distributed to unitholders at S\$1.5 million. The distribution per unit of 0.07 Singapore cents will be paid to Unitholders on 31 March 2026.

[READ MORE](#)

Tuan Sing: Posts S\$32.1 Million FY2025 Net Profit Driven By Asset Enhancement Gains In Singapore & Australia.

Group booked fair value gains of \$51.2 million mainly from revaluation of properties in Singapore and Australia. Shareholders will receive an unchanged first and final one-tier tax-exempt dividend of 0.7 cents per share, payable on 26 June 2026. Looking ahead, the Group is committed to develop and enhance its asset portfolio, while exploring options and opportunities which promote its footprint in the region.

[READ MORE](#)




IR Announcements



Leong Guan: Reports 7% Revenue Growth To S\$40 Million For FY2025, Successful SGX Listing Positions Group For Next Phase Of Growth.

Successfully listed on Catalist board of Singapore Exchange on 11 December 2025. Total equity strengthened 69% to S\$10.3 million post-listing. Consistently generated net cash from operating activities with S\$2.9 million in FY2025. Property, plant and equipment expanded to S\$14.3 million to position for next growth. 80% Dividend Payout or 0.3935 cents per share for FY2025.

[READ MORE](#)

Straco: Reports Lower Net Profit Of S\$17.96 Million For 2025.

Full year net profit of \$17.96 million, a decrease of 34% year-on-year. Net asset value per share of 31.91 cents, a marginal decrease of 0.2% year-on-year. Net cash of \$183.12 million, 21.41 cents per share. Proposed first and final dividend of 1.5 cent per share.

[READ MORE](#)


Cordlife: Records FY2025 Revenue Of S\$38.9 Million, Uncompromising Commitment On Safety, Quality & Compliance.

FY2025 revenue increased to \$38.9 million from \$27.6 million in FY2024. Excluding the \$10.6 million revenue reversal recorded in FY2024, underlying revenue growth was more moderate. The increase was primarily driven by the full resumption of the Singapore operations between 14 January 2025 and 29 September 2025, better performance in Hong Kong and Malaysia, and reduced revenue reversal related to refunds. Net loss narrowed to \$12.6 million from \$18.9 million in FY2024, owing to increase in revenue, partially offset by higher costs.

[READ MORE](#)

TeleChoice: Maintains Growth Trajectory With Strong FY2025 Performance.

Profit after tax rises 58.0% to S\$6.6 million, on the back of 36.2% higher revenue of S\$518.0 million. All three divisions registered operating profit growth, demonstrating the Group's sustained execution and momentum. FY2025 final dividend of 0.45 cents per share, reflected resilient performance and shareholder commitment.

[READ MORE](#)




IR Announcements



COSCO SHIPPING SG: FY2025 Results For The Year Ended 31 December 2025.

Group's gross profit for FY2025 was S\$46.5 million (FY2024: S\$42.5 million), 10% or S\$4 million higher than FY2024. Annualised ROE was 1.02%. Basic and diluted EPS was 0.177 cents. NAV per ordinary share was 17.44 cents. Gearing ratio (net of cash) was -0.11 times as at 31 December 2025. Dividend per share of 0.089 cents.

[READ MORE !\[\]\(50f8d6713b5bcc3d64b55d5b693f0874_img.jpg\)](#)

IHH: Delivers Strong Core Growth For FY2025.

On a constant currency basis, core revenue increased 18% (RM26.2b) and core PATMI (ex EI) was up 3% (RM2.3b) as Malaysia and India continue on their strong growth trajectory. Reported revenue was up 6% (RM25.7b) and PATMI down 21% (RM2.1b) due to unrealised losses from currency translation. Board approved a higher dividend of 10.5 sen per share for FY2025 (FY2024: 10 sen per share). Balance sheet remains healthy at 2.4x net debt to EBITDA as at 31 December 2025. Return on Equity (ex EI; ex MFRS129) at c.9% for FY2025.

[READ MORE !\[\]\(c3cb3e27962467dba062ba7d81d3c41f_img.jpg\)](#)

CNMC Goldmine: Reports Fourfold Surge In 2025 Earnings To All-Time High Of US\$42 Million.

Revenue exceeds US\$100 million for the first time to US\$128 million. Full-year dividend, tax-exempt one-tier, rises to 5.0 SGD cents a share from 1.4 SGD cents for 2024. Net cash climbs to record US\$62.6 million.

[READ MORE !\[\]\(43be1cec673fa900752375acd6594d2e_img.jpg\)](#)

Sarine: Maintains Positive EBITDA & Operational Cashflow Despite Continued Difficult Industry Conditions In FY2025.

Disruption by lab-grown diamonds in the United States and weak consumer sentiments in China prevail. New services with recurrent revenues have gained recognition with existing and new customers, but FY2025-generated revenues were insufficient to compensate for the revenue decline in traditional businesses of capital equipment sales and Galaxy scanning, driven by the lower demand for natural diamonds.

[READ MORE !\[\]\(b6550f13d43204f55651807e6c813274_img.jpg\)](#)



IR Announcements



Geo Energy: Delivers Record Coal Sales & Excellent Coal Production With Strong Net Profit Of US\$27.5 Million In FY2025 Despite Market Headwinds, Billion-Dollar Energy Group Roadmap On Track With Integrated Infrastructure Targeted For Completion In 1H2026.

The Group achieved an excellent coal production of 12.5 million tonnes in FY2025, exceeded its target coal production of 10.5-11.5 million tonnes. Total coal sales increased 62.0% to 12.8 million tonnes in FY2025 (FY2024: 7.9 million tonnes) despite challenging weather conditions, with increased contribution from its PT Tanah Bumbu Resources coal mine and growing contribution from its PT Triaryani coal mine.

[READ MORE !\[\]\(baf4ee523d4e81665920305b5f65077c_img.jpg\)](#)

Sunpower: Reports Resilient FY2025 Results With Growth In Profitability.

Total steam sales volume increased 5.8% YoY to 12.13 million tons. GI Recurring PATMI reached RMB 424.7 million, representing a 45.4% YoY increase in profitability, including a one-off provision for bad debt recorded in 3Q2024. Net profit attributable to equity holders rose 162.0% YoY to RMB 312.9 million.

[READ MORE !\[\]\(5f6d5b227c43962aef0633740f27a273_img.jpg\)](#)

Straits Trading: FY2025 A Watershed Year.

Revenue rises 10.4% to \$623.3 million on stronger Resources and Property contributions. Loss after tax of \$234.0 million in FY2025 mainly impacted by non-cash impairment and valuation adjustments in a challenging market environment. Interim dividend maintained at 8 cents per share, supported by strong liquidity and disciplined capital management. 2025 lays the foundation for new growth opportunities, including senior living.

[READ MORE !\[\]\(f6d974363b0c5f864fb00896fca9fe4c_img.jpg\)](#)

Kencana: Favourable Commodity Pricing & Higher Output Drive Strong FY2025 Results.

The Group recorded an increase in revenue of 29.2% in FY2025 compared to FY2024. The higher revenue was attributable to a combination of increased sales volumes and higher average selling prices for both crude palm oil and palm kernel. The Group recorded a net profit of US\$18.4 million in FY2025, representing an increase of 54.4% compared to US\$11.9 million in FY2024.

[READ MORE !\[\]\(7a4c653a1688582a8f5fb61cfc95fa71_img.jpg\)](#)



IR Announcements


change the game

Rex: Reports Higher Revenue In FY2025.

Rex International Holding Limited announced its financial results for the six months and full year ended 31 December 2025. For FY2025, the Group recorded revenue of US\$318.80 million, from the sale of crude oil from the Yumna Field, after the Oman government's share of oil, and the oil field in Norway and Germany. This was a 7 per cent increase from revenue of US\$298.14 million in the year ended 31 December 2024. Adjusted EBITDA for FY2025 was a positive US\$91.14 million, as compared to an adjusted EBITDA of US\$160.64 million in FY2024, a 43 per cent decrease. The Group recorded a loss after tax of US\$152.70 million in FY2025, from a loss after tax of US\$50.20 million in FY2024, mainly due to an increase in production and operating expenses, and non-cash items including depletion from produced oil and gas properties and impairment losses on oil and gas properties and exploration and evaluation assets.

[READ MORE !\[\]\(4278337c65c15731be80e79a843d9a8b_img.jpg\)](#)

Pacific Radiance: Posts 26% Revenue Growth To US\$55.2 Million, Net Profit At US\$12.9 Million.

Revenue driven by stronger revenue from chartering and shipyard activities. Gross profit rose 55% to US\$22.2m on improved operating performance. Net profit moderated by US\$3.5m fair value loss on warrants. Group remains discipline in capital allocation amid uncertain macro environment.

[READ MORE !\[\]\(c72662d98bc5654faf5e186f89a0ce0b_img.jpg\)](#)

Q & M Dental: Drives 16% Profit Growth From S\$26.1 Million In FY2024 To S\$30.4 Million In FY2025 For Core Dental Business.

Group reports robust cash position of \$117m, poised for strategic growth. Affirming commitment to shareholders with a 2nd interim dividend of 0.42 cent per share to be paid on 26 March 2026. Additional allocation of up to 40 million ordinary shares buyback, increasing total allocation up to 90 million ordinary shares.

[READ MORE !\[\]\(b75907535e72769ce207fe9ce354f5fa_img.jpg\)](#)

AsiaMedic: Delivers Improved FY2025 Performance As Core Imaging Business Strengthens.

Financial performance strengthened alongside business expansion as newly added capacity are ramped up during the year. Profit attributable to owners of the Company doubled to S\$2.0 million in FY2025. Disposal of 60% interest in aesthetic business sharpens focus on core healthcare operations.

[READ MORE !\[\]\(3aab25fa446c2e11a4a59bcf48d49948_img.jpg\)](#)

Don't Miss These Must-Read Investment Gems!

CLICK ON BOOK FOR MORE DETAILS

