

Invest

A Weekly e-Publication by SHAREINVESTOR

Data and Investing Ideas

ISSUE
156
12 SEPTEMBER
2025

Scan or click me



Via email, every Friday

COMPANY SPOTLIGHT

CAN YOU TRADE SG REITs? Understanding The Strategies & Opportunities

See
more on
pages
12-17

PLUS

TOP STOCKS OF THE WEEK

- Dividend Stocks *on page 06*
- Growth Stocks *on page 08*
- Value Stocks *on page 10*

INSIDER TRADES

On page 32

IR ANNOUNCEMENTS

On pages 34 - 36

ANALYST UPGRADES: Top 3 Stocks Earning BUY Ratings This Month

See more on pages 23-26

02 MARKET AT A GLANCE

04 REGIONAL MARKETS

06 DIVIDEND STOCKS

08 GROWTH STOCKS

10 VALUE STOCKS

12 COMPANY SPOTLIGHT: CAN YOU TRADE
SG REITS: UNDERSTANDING THE
STRATEGIES AND OPPORTUNITIES

18 INVESTOR-ONE PORTFOLIO

23 COMPANY SPOTLIGHT: ANALYST
UPGRADES: TOP 3 STOCKS EARNING BUY
RATINGS THIS MONTH

28 COMPANY SPOTLIGHT: ANALYST ALERT:
RECOMMENDATION AND CONSENSUS ON
COMFORTDELGRO, HONG LEONG ASIA,
OCBC

32 INSIDER TRADES

34 IR ANNOUNCEMENTS

37 INVESTMENT BOOKS



SHAREINVESTOR®

An AlphaInvest Company

Invest with Knowledge

MARKETING & SALES

SALES MANAGER

Nigel Lim

ADMIN

Gillian Ong

Dawn Ong

CONTENT

DIRECTOR

Edward Stanislaus

INVESTOR RELATIONS

GROUP MANAGING DIRECTOR

Edward Stanislaus

DIRECTOR

Zhao Yanjing

yanjing.zhao@shareinvestor.com

SENIOR MANAGER

Vivien Ong

vivien.ong@shareinvestor.com

SENIOR QC EXECUTIVE

Poh Lam Huat

lamhuat@shareinvestor.com

ALPHAINVEST HOLDINGS

BOARD OF DIRECTORS

CHAIRMAN

Patrick Daniel

GROUP CEO

Christopher Lee

GROUP COO

Lim Dau Hee

GROUP MD

Shanison Lin

SHAREINVESTOR PTE LTD

151 Lorong Chuan #04-07B
New Tech Park (Lobby G)
Singapore 556741

T (65) 6958 8000

F (65) 6958 8044

E admin@shareinvestor.com

W www.ShareInvestor.com

[Advertise with us](#)

Disclaimer:

The services information and data made available on or accessible via this newsletter including facts, views, advice, analyses, opinions and recommendations of individuals and organisations are for general information purposes only.

It is not intended as investment advice and must not be relied upon as such. ShareInvestor Pte Ltd and its third party information providers are not giving or purporting to give or representing or holding themselves out as giving financial, investment, tax, legal and other professional advice.

Advice from a securities professional is strongly advised.

Market at a Glance

Over 5 trading days as at yesterday

www.shareinvestor.com

market data at your fingertips



ShareInvestor WebPro (www.shareinvestor.com)

Prices > Stock Prices > SGX > click Stocks tab

1. mouse over **Ranking** > select **Top Active** > mouse over **Column Layout** > select **Edit Customs** > select **Name** > select **Volume** > select **Last Done Price** > mouse over **Column Layout** > select **Custom**
2. mouse over **Ranking** > select **Top Turnover** > mouse over **Column Layout** > select **Edit Customs** > select **Name** > select **Last Done Price** > select **Value** > mouse over **Column Layout** > select **Custom**
3. mouse over **Ranking** > select **Top Gainers (Over 5 Trading Days)** > mouse over

4. mouse over **Ranking** > select **Top Losers (Over 5 Trading Days)**
5. mouse over **Ranking** > select **Top % Gainers (Over 5 Trading Days)**
6. mouse over **Ranking** > select **Top % Losers (Over 5 Trading Days)**

Singapore Top Actives

(as at yesterday)

Name	Last Done	Volume
Wilton Resources	0.015	80,750.3
Genting Sing	0.760	73,967.9
HSI 23400MBePW251127	0.056	63,480.0
HSI 25800MBePW251230	0.068	41,740.0
AnAn Intl	0.022	41,569.9
BACUI TECH	0.002	35,386.5
GRC	0.065	32,816.6
Meta Health	0.008	31,869.6
Intl Cement	0.046	27,552.0
Golden Agri-Res	0.290	27,230.6

Top Gainers

(over 5 Trading days as at yesterday)

Name	Last Done	5 Days Chg
SPDR S&P500 US\$	654.000	11.140
GLD SG\$	429.790	9.790
GLD US\$	334.900	8.730
SiMSCI 5xLongSG260226	6.040	2.850
N522100N 270901	101.800	2.199
DBS	52.570	2.170
Alibaba 3xLongSG271125	8.010	1.520
Nasdaq 7xLongSG260226	8.750	1.460
ALPHAB 3xLongSG261006	7.390	1.090
Tencent 5xLongUB251128	5.650	1.050

Top Losers

(over 5 Trading days as at yesterday)

Name	Last Done	5 Days Chg
Popmart 5xLongSG270706	0.760	-0.895
NIO Inc. USD OV	5.860	-0.690
Popmart 5xLongUB270730	0.450	-0.615
XT Vietnam US\$	37.000	-0.600
CMOB 5xLongUB251031	3.590	-0.530
SPDR DJIA US\$	459.000	-0.500
Alibaba 3xShortSG271125	1.365	-0.475
Xiaomi 5xLongUB250930	3.180	-0.470
Tencent 3xShortSG271125	2.300	-0.460
JD 5xShortUB260831	0.505	-0.365

Singapore Top Turnover

(as at yesterday)

Name	Last Done	Value
DBS	52.570	166,481,953
Singtel	4.350	84,123,181
OCBC Bank	16.880	64,729,579
YZJ Shipbldg SGD	3.190	64,548,769
UOB	35.460	60,852,685
Genting Sing	0.760	55,802,926
ST Engineering	8.150	54,671,664
UOL	7.690	35,275,599
SIA	6.530	28,595,287
Mapletree Log Tr	1.250	27,939,076

Top % Gainers

(over 5 Trading days as at yesterday)

Name	Last Done	5 Days % Chg
Shanghai Turbo^	0.025	2,400.00
17LIVE W281207	0.026	1,200.00
AJJ Medtech	0.008	166.67
Alibaba MB eCW251003 145	0.044	131.58
Popmart 5xShortSG270706	0.240	128.57
Baidu MB eCW251003	0.051	121.74
Sevens Atelier	0.048	118.18
Baidu 5xLongUB270630	1.645	116.45
DISA	0.002	100.00
HS Optimus	0.002	100.00

Top % Losers

(over 5 Trading days as at yesterday)

Name	Last Done	5 Days % Chg
Alibaba 5xShortSG260513	0.001	-92.31
HSI 7xShortSG251029	0.001	-75.00
Santak	0.028	-74.31
HSI 23400MBePW250929	0.005	-72.22
HSI 24400MBePW250929	0.015	-69.39
Meituan MB eCW251202	0.005	-68.75
HSI 22800MBePW251030	0.023	-59.65
Popmart 5xLongUB270730	0.450	-57.75
Baidu 5xShortUB270630	0.190	-57.30
HealthBank	0.032	-56.16

Jointly organized by:

SHAREINVESTOR
An AlphaInvest CompanyInvestingNote
By An AlphaInvest

In Collaboration with:



moomoo

SG Invest Symposium

Shaping Singapore's Financial Future

As Singapore continues to grow as a leading financial hub, are you ready to gain insights from the brightest minds shaping tomorrow's economy?

Join us at the SG Invest Symposium 2025, a premier event designed for investors who want to understand the opportunities and challenges that lie ahead in Singapore's financial journey.

This symposium brings together thought leaders, seasoned investors, and industry experts who will share actionable strategies and forward-looking perspectives



Expert Keynotes:

Gain insights on global market trends, Singapore's financial landscape, and future growth opportunities.



Panel Discussions

Engage with industry veterans as they discuss investing and navigating the evolving financial ecosystem.



Deep-Dive Sessions

Learn practical approaches to portfolio building, wealth management, and identifying opportunities in volatile markets.

Date:

4 October 2025 (Saturday)

Time:

10:00AM - 2:00PM

Venue:

**Stephen Riady Auditorium
@ NTUC, Level 7**

Admission:
Free

[Click Here to Register](#)

Regional Markets

Over 5 trading days

ShareInvestor WebPro (www.shareinvestor.com)

1. Price > Stock prices
2. select Market: Bursa / HKEX / NYSE / NASDAQ (one bourse at a time)
3. select Stocks Tab
4. select Ranking Top Gainers or Top Losers (Over 5 Trading Days)
5. Mouse over Column Layout > select Edit Customs > select Last Done Price > select 5 Days Change > select 52 Weeks High > select 52 Weeks Low > Mouse Over Column Layout > select Custom

BURSA (RM)

Top Gainers

Name	Last Done	5 Days Change	52 Weeks High	52 Weeks Low
NESTLE	95.500	1.900	106.000	61.800
PPB	10.100	0.700	15.000	8.230
MPI	28.220	0.420	29.280	13.300
MCEMENT	6.090	0.390	6.040	4.210
HLIND	13.780	0.380	15.740	12.360

Top Losers

Name	Last Done	5 Days Change	52 Weeks High	52 Weeks Low
PANAMY	8.450	-1.330	18.580	8.450
HEIM	20.340	-0.800	28.680	20.100
PETDAG	21.380	-0.620	23.800	16.100
F&N	27.000	-0.600	32.500	22.400
ALLIANZ-PA	17.800	-0.560	22.600	16.680

HONG KONG (HKD)

Top Gainers

Name	Last Done	5 Days Change	52 Weeks High	52 Weeks Low
DUALITYBIO-B (9606)	506.000	136.400	459.800	165.500
INVESCO QQQ (3455)	4,535.000	110.000	4,573.000	3,098.000
INVESCO QQQ-R (83455)	4,145.000	86.000	4,173.000	2,966.000
SPDR GOLD TRT (2840)	2,599.000	59.000	2,625.000	1,810.000
SPDR GOLD TRT-R (82840)	2,374.000	49.000	2,386.000	1,714.000

Top Losers

Name	Last Done	5 Days Change	52 Weeks High	52 Weeks Low
UNISOUND (9678)	589.000	-119.500	879.000	198.000
POP MART (9992)	273.400	-41.000	339.800	46.650
AKESO (9926)	127.700	-25.900	179.000	54.000
CAO CAO INC (2643)	56.100	-25.550	92.500	32.850
SKB BIO-B (6990)	491.200	-22.300	541.500	152.000

NYSE (USD)

Top Gainers

Name	Last Done	5 Days Change	52 Weeks High	52 Weeks Low
Oracle	328.330	105.330	345.720	118.860
GE Vernova	643.560	44.750	677.290	199.650
Ubiquiti	605.660	40.530	616.183	192.105
UnitedHealth Group	346.780	36.400	630.730	234.600
Guidewire Software	253.040	36.050	272.600	165.084

Top Losers

Name	Last Done	5 Days Change	52 Weeks High	52 Weeks Low
Berkshire Hathaway A	737,994.000	-21,804.000	812,855.000	657,497.500
NVR	8,335.890	-71.880	9,964.770	6,562.850
White Mountains Insurance Group	1,760.480	-40.030	2,023.000	1,678.870
Humana	273.580	-38.420	333.790	206.870
Markel Group	1,920.740	-37.440	2,075.920	1,494.000

NASDAQ (USD)

Top Gainers

Name	Last Done	5 Days Change	52 Weeks High	52 Weeks Low
QMMM Holdings A	109.500	102.380	303.000	0.540
AppLovin A	567.120	67.150	576.010	87.120
Broadcom	369.570	63.470	372.970	138.100
KLA	932.630	59.340	959.260	551.330
Astera Labs	230.370	42.420	230.880	38.140

Top Losers

Name	Last Done	5 Days Change	52 Weeks High	52 Weeks Low
Synopsys	387.780	-214.180	651.730	365.740
Booking Holdings	5,474.810	-111.050	5,839.410	3,719.340
Mercadolibre	2,348.990	-68.810	2,645.220	1,646.000
First Citizens BancShares A	1,946.650	-63.460	2,412.930	1,473.620
lululemon athletica	163.900	-42.190	423.320	162.800

SHAREINVESTOR[®]

An AlphaInvest Company

Unlock Powerful REITs Insights with ShareInvestor's New REITs Metrics Data & Screener

ShareInvestor provide investors a one-stop platform for comparing Singapore's top REIT metrics. From potential upside and gearing ratios to occupancy rates and rental reversions, this powerful tool gives you a concise yet comprehensive view to identify high-potential REITs. Whether you are a retail investor or a seasoned analyst, ShareInvestor's intuitive interface makes REIT research fast, insightful, and effective.

No	Name	Last Done	Gearing %	Interest Cover Ratio	Occupancy Rate (%)	WADM	Cost of Debt (%)	WALE (Years)	Fixed-Rate Debt %	Rental Reversion Rate (%)
1	AIMS APAC Reit SIXK58U	1.310	28.900	2.400	93.600	3.000	4.300	4.400	85.000	20.000
2	Acro HTrust USD SIXKXZL	0.265	42.300	1.700	61.500	2.000	6.400	-	47.500	-
3	BHG Retail Reit SIXBMDU	0.435	40.200	1.800	94.900	-	5.900	2.800	-	-
4	CDL HTrust SIXLJ65	0.775	41.800	2.200	75.000	2.300	3.900	-	33.800	-
5	CapLand Ascendas REIT SIXA17U	2.640	38.900	3.600	91.500	3.100	3.600	3.800	73.600	11.000
6	CapLand Ascott T SIXCHRN	0.860	39.900	3.200	77.000	3.500	2.900	-	76.000	-
7	CapLand China T SIXAL8U	0.680	42.600	3.000	97.700	3.900	3.510	1.700	86.000	0.500
8	CapLand India T SIXCY9U	1.010	41.500	2.500	92.000	2.800	6.000	3.400	84.500	9.000
9	CapLand IntCom T SIXC38U	2.130	38.700	3.200	96.400	4.200	3.400	3.200	78.000	10.400
10	Darwa Hse Log Tr SIXDHLU	0.565	41.100	7.400	92.100	2.500	1.690	6.700	99.300	13.000

**Click to
Access**

Dividend Stocks

Price & Total Shareholder Return (as at yesterday)



DEFINITION

Company is paying out dividend with low or moderate leverage.

CHART GUIDE

Total Shareholder Return (TSR) combines share price appreciation and distributions paid to show the total return to the shareholder expressed as a percentage.



ShareInvestor WebPro > Screener > Market Screener (FA & TA) > select SGX > add criteria

A. Criteria

- > click Add Criteria
- Fundamental Analysis Conditions tab >select (i) Dividend Yield
- Fundamental Analysis Conditions tab >select (ii) Dividend Payout (Historical)
- Fundamental Analysis Conditions tab >select (iii) Total Debt To Equity
- Fundamental Analysis Conditions tab >select (iv) Total Shareholder Returns

- Fundamental Analysis Conditions tab >select (v) Total Shareholder Returns
- Fundamental Analysis Conditions tab / >select (vi) CAGR of Dividend Per Share
- Fundamental Analysis Conditions tab >select (vii) CAGR of Dividend Per Share

B. Conditions (Criteria Filters)

1. Dividend Yield - select (more than) type (1) % for the past select (1) financial year(s)
2. Dividend Payout (Historical) - select (between) type (0.5) to type (1) times for the past select (1) financial year(s)
3. Total Debt to Equity - select (less than) type (1) for the past select (1) financial year(s)
4. Total Shareholder Return - select (more than) type (5) % for the past select (3) financial year(s)
5. Total Shareholder Return - select (more than) type (5) % for the past select (5) financial year(s)

6. CAGR of Dividend Per Share - select (less than) type (30) % for the past select (5) financial year(s)
 7. CAGR of Dividend Per Share - select (more than) type (1) % for the past select (5) financial year(s)
- > click Save Template > Create New Template type (Dividend Companies) > click Create
 - > click Save Template as > select Dividend Companies > click Save
 - > click Screen Now (may take a few minutes)
 - > Sort By: Select (Dividend Yield) Select (Desc)
 - > Mouse over stock name > Factsheet > looking for Total Shareholder Return



BUMITAMA AGRI LTD. (P8Z.SI)

ANALYSIS



Period	Dividend Received	Capital Appreciation	Total Shareholder Return
Short Term Return	5 Days	-	-0.040
	10 Days	-	+0.040
	20 Days	0.036	+0.215
Medium Term Return	3 Months	0.036	+0.360
	6 Months	0.091	+0.280
	1 Year	0.091	+0.420
Long Term Return	2 Years	0.150	+0.579
	3 Years	0.236	+0.551
	5 Years	0.306	+0.654
Annualised Return	Annualised	-	-
			+24.71 %



KIMLY LIMITED (1D0.SI)

ANALYSIS



Period	Dividend Received	Capital Appreciation	Total Shareholder Return
Short Term Return	5 Days	-	-0.010
	10 Days	-	+0.015
	20 Days	-	+0.010
Medium Term Return	3 Months	0.010	+0.050
	6 Months	0.010	+0.065
	1 Year	0.020	+0.055
Long Term Return	2 Years	0.041	+0.050
	3 Years	0.050	+0.015
	5 Years	0.092	+0.130
Annualised Return	Annualised	-	-
			+14.53 %



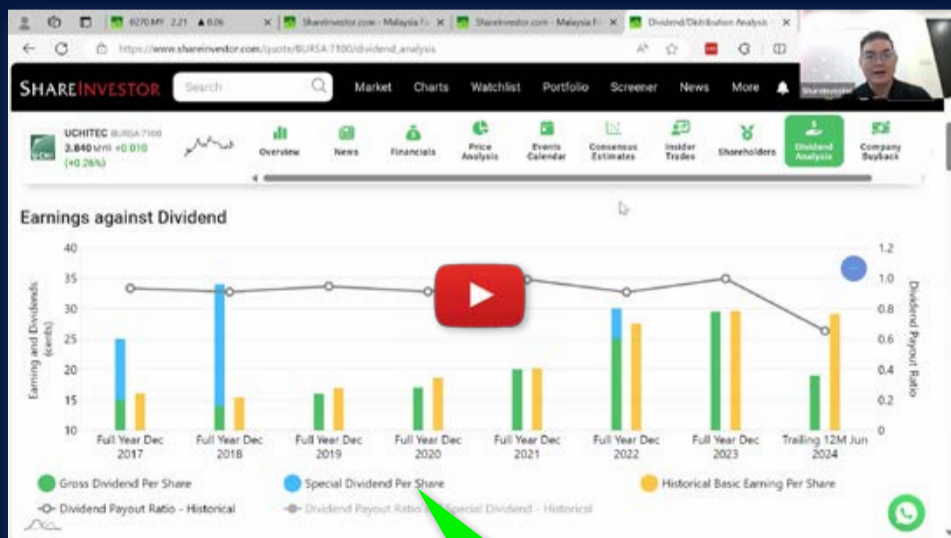
LUM CHANG HOLDINGS LIMITED (L19.SI)

ANALYSIS



Period	Dividend Received	Capital Appreciation	Total Shareholder Return
Short Term Return	5 Days	-	-0.030
	10 Days	-	-0.050
	20 Days	-	+0.020
Medium Term Return	3 Months	-	+0.100
	6 Months	-	+0.145
	1 Year	0.030	+0.140
Long Term Return	2 Years	0.045	+0.100
	3 Years	0.063	+0.040
	5 Years	0.163	+0.130
Annualised Return	Annualised	-	-
			+14.60 %

Ultimate Guide to use ShareInvestor



YOU WILL LEARN HOW TO USE:

- Company Financials
- Market Screener
- Company Insider Trades
- Dividend Analysis
- Consensus Estimation
and more...

**Watch
now!**

Growth Stocks

Price & Total Shareholder Return (as at yesterday)

DEFINITION Company revenue is growing and making good quality of earnings with positive Free Cash Flow.

CHART GUIDE Total Shareholder Return (TSR) combines share price appreciation and distributions paid to show the total return to the shareholder expressed as a percentage.



ShareInvestor WebPro > Screener > Market Screener (FA & TA) > select SGX > add criteria

A. Criteria

1. Fundamental Analysis Conditions tab >select (i) Free Cash Flow, (ii) Revenue Growth, (iii) Gross Profit (Earnings) Margin, (iv) Quality of Earnings, (v) Total Shareholder Returns, > click Add Criteria
2. Fundamental Analysis Conditions tab >select (vi) Total Shareholder Returns > click Add Criteria

B. Conditions (Criteria Filters)

1. Free Cash Flow – select (more than) type (1) for the past select (1) financial year(s)
 2. Revenue Growth – select (more than) type (1) for the past select (1) financial year(s)
 3. Gross Profit (Earnings) Margin - select (more than) type (30) % for the past select (1) financial year(s)
 4. Quality of Earnings – select (more than) type (1) for the past select (1) financial year(s)
 5. Total Shareholder Return – select (more than) type (5) % for the past select (3) financial year(s)
 6. Total Shareholder Return – select (more than) type (5) % for the past select (5) financial year(s)
- > click Save Template > Create New Template type (Growth Companies) > click Create

- > click Save Template as > select Growth Companies > click Save
- > click Screen Now (may take a few minutes)
- > Sort By: Select (Revenue Growth) Select (Desc)
- > Mouse over stock name > Factsheet > looking for Total Shareholder Return



AZEUS SYSTEMS HOLDINGS LTD. (BBW.SI)

ANALYSIS



Period	Dividend Received	Capital Appreciation	Total Shareholder Return
Short Term Return	5 Days	+0.110	+0.71 %
	10 Days	-0.090	-0.58 %
	20 Days	-0.340	-2.15 %
Medium Term Return	3 Months	-0.910	-5.64 %
	6 Months	+3.690	+31.22 %
	1 Year	0.594	+62.83 %
Long Term Return	2 Years	0.938	+84.81 %
	3 Years	1.336	+140.66 %
	5 Years	1.441	+1093.73 %
Annualised Return	Annualised	-	+64.20 %



SING HOLDINGS LIMITED (51C.SI)

ANALYSIS



Period	Dividend Received	Capital Appreciation	Total Shareholder Return
Short Term Return	5 Days	+0.055	+13.10 %
	10 Days	+0.060	+14.46 %
	20 Days	+0.070	+17.28 %
Medium Term Return	3 Months	+0.130	+37.68 %
	6 Months	0.010	+38.57 %
	1 Year	0.010	+46.97 %
Long Term Return	2 Years	0.020	+45.59 %
	3 Years	0.030	+29.49 %
	5 Years	0.050	+40.00 %
Annualised Return	Annualised	-	+6.96 %



ZIXIN GROUP HOLDINGS LIMITED (42W.SI)

ANALYSIS



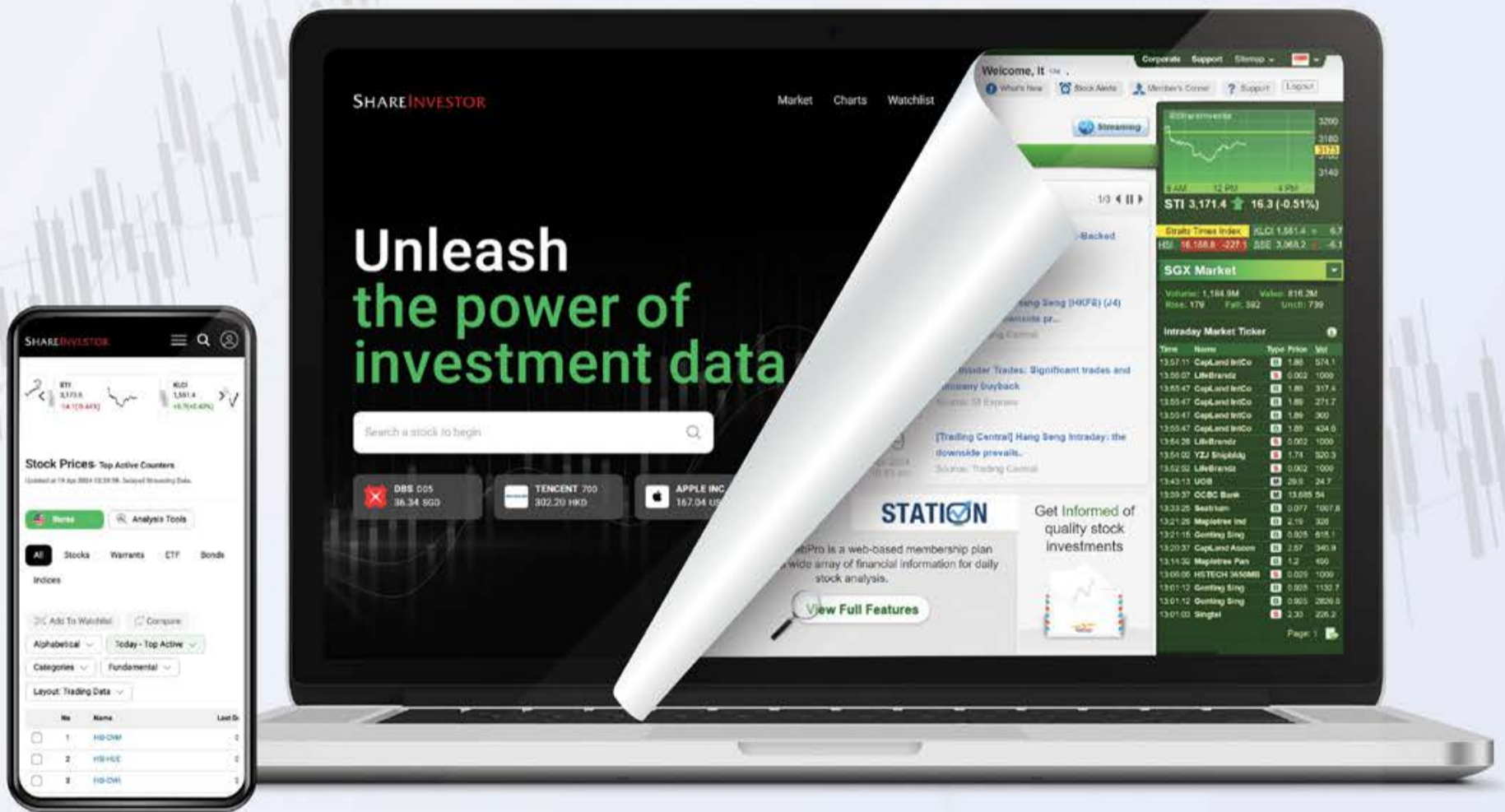
Period	Dividend Received	Capital Appreciation	Total Shareholder Return
Short Term Return	5 Days	-	-
	10 Days	-	-
	20 Days	-	-
Medium Term Return	3 Months	-0.003	-0.82 %
	6 Months	+0.004	+14.81 %
	1 Year	+0.011	+66.00 %
Long Term Return	2 Years	+0.001	+3.33 %
	3 Years	+0.009	+40.91 %
	5 Years	+0.005	+19.23 %
Annualised Return	Annualised	-	+3.58 %

SHAREINVESTOR®

An AlphaInvest Company

EXPERIENCE

The New ShareInvestor Website



**Advanced
Data
Visualizations**



**Comprehensive
Portfolio
Feature**



**Enhanced
Look &
Feel**



**TRY ME
NOW**



Value Stocks

Price & Total Shareholder Return (as at yesterday)

DEFINITION Share price of a company trading at a lower price as compared to its fundamentals (FA) such as financial performance and dividend, allowing it to be attractive to value investors.

CHART GUIDE Total Shareholder Return (TSR) combines share price appreciation and dividend distributions paid to show the total return to the shareholder expressed as a percentage.



ShareInvestor WebPro > Screener > Market Screener (FA & TA) > select SGX > add criteria

A. Criteria

- > click Add Criteria
- Fundamental Analysis Conditions tab (i) Price Earnings Ratio
- Fundamental Analysis Conditions tab >select (ii) CAGR of Net Earnings
- Fundamental Analysis Conditions tab >select (iii) Net Debt To Equity
- Fundamental Analysis Conditions tab >select (iv) Return On Equity (ROE)

B. Conditions

1. Price Earnings Ratio – select (less than) type (15) times now
2. CAGR of Net Earnings – select (more than) type (10) % for the past type (3) financial year(s)
3. Net Debt To Equity – select (less than) type (1) for the past select (1) financial year(s)
4. Return On Equity (ROE) – select (more than) type (10) % for the past select (1) financial year(s)

- > click Save Template > Create New Template type (Value Stock) > click Create
- > click Save Template as > select Value Companies > click Save
- > click Screen Now (may take a few minutes)
- > Mouse over stock name > Factsheet > looking for Total Shareholder Return
- > Mouse over stock name > Charts > click C2 Charts tab



CHASEN HOLDINGS LIMITED (5NV.SI)

ANALYSIS



Period	Dividend Received	Capital Appreciation	Total Shareholder Return	
Short Term Return	5 Days	-0.001	-1.47 %	
	10 Days	-0.002	-2.90 %	
	20 Days	-0.001	-1.47 %	
Medium Term Return	3 Months	-	-	
	6 Months	-0.002	-2.90 %	
	1 Year	0.030	-0.003	+38.57 %
Long Term Return	2 Years	0.030	+0.035	+203.12 %
	3 Years	0.030	+0.020	+106.38 %
	5 Years	0.030	+0.026	+148.72 %
Annualised Return	Annualised	-	+19.99 %	



MSM INTERNATIONAL LIMITED (5QR.SI)

ANALYSIS



Period	Dividend Received	Capital Appreciation	Total Shareholder Return	
Short Term Return	5 Days	-	-	
	10 Days	-	-	
	20 Days	-	-	
Medium Term Return	3 Months	+0.035	+35.00 %	
	6 Months	+0.019	+16.38 %	
	1 Year	-	-0.061	-31.12 %
Long Term Return	2 Years	-	+0.027	+26.00 %
	3 Years	-	-0.003	-2.27 %
	5 Years	-	+0.023	+20.64 %
Annualised Return	Annualised	-	+3.81 %	



THAKRAL CORPORATION LTD (AWI.SI)

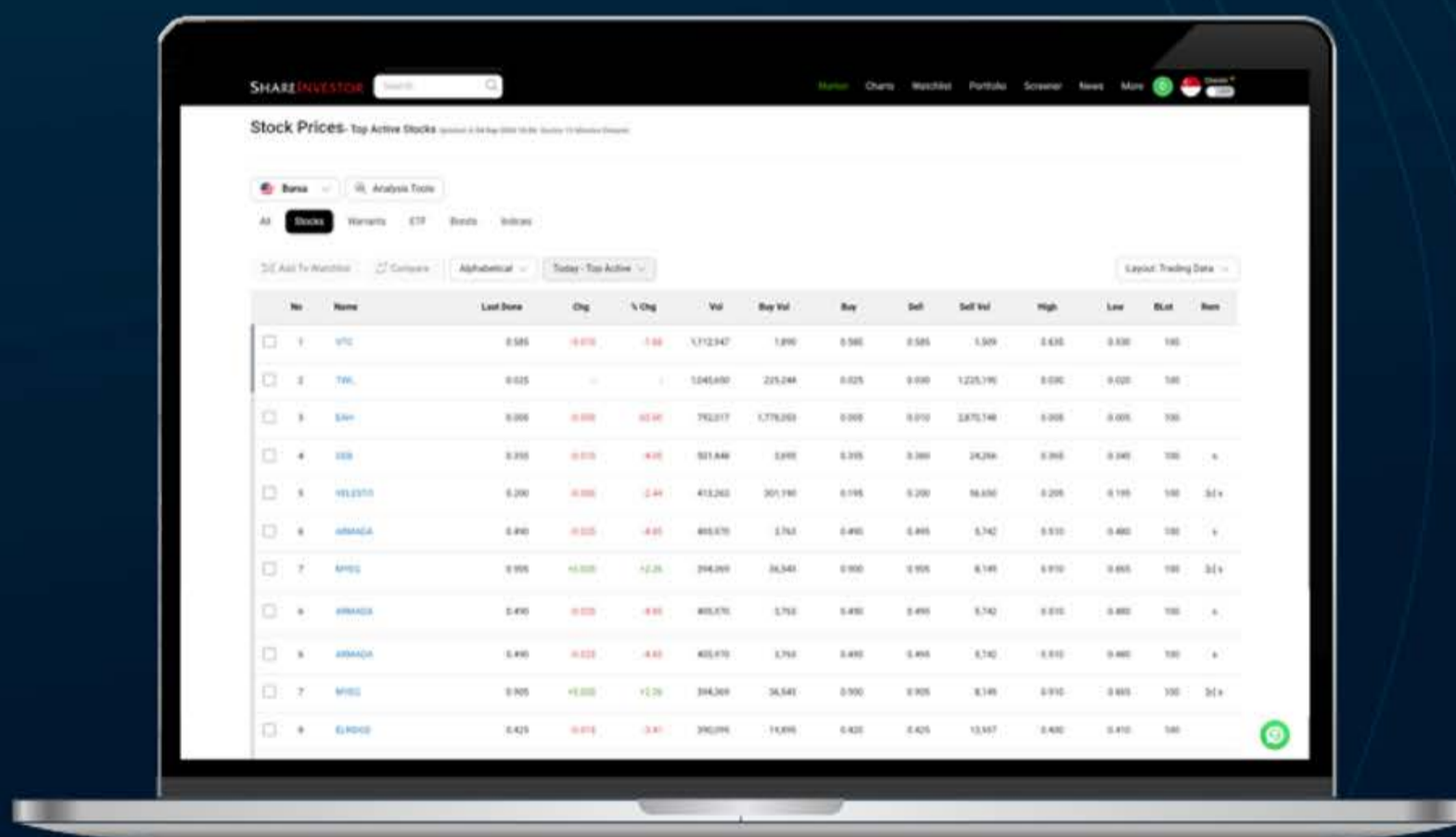
ANALYSIS



Period	Dividend Received	Capital Appreciation	Total Shareholder Return	
Short Term Return	5 Days	+0.020	+1.32 %	
	10 Days	-	-	
	20 Days	+0.090	+6.21 %	
Medium Term Return	3 Months	0.020	+0.030	+3.31 %
	6 Months	0.020	-0.690	+83.63 %
	1 Year	0.020	-0.895	+141.86 %
Long Term Return	2 Years	0.080	-0.925	+163.41 %
	3 Years	0.105	-0.970	+168.60 %
	5 Years	0.185	-1.123	+313.87 %
Annualised Return	Annualised	-	+32.84 %	

SHAREINVESTOR[®]
An AlphaInvest Company

Navigating the **New** ShareInvestor A Step-by-Step Guide



Learn more about some of our new platform's exciting features and functions, including:

- ✓ The functionalities of ShareInvestor's Factsheet
- ✓ Key differences in the updated ShareInvestor Factsheet
- ✓ Case study on how to utilize the Factsheet effectively

Click to Watch The Webinar



COMPANY SPOTLIGHT

CAN YOU TRADE SG REITS: Understanding the Strategies and Opportunities

Investor-One / Mon, Aug 25, 9:00 AM

Completing Ongoing Asset Enhancements

» Elevating Gallileo as a Modern Workplace

Committed Occupancy:
97.7%¹Estimated Cost:
EUR180 millionGreen Certification Target:
Minimum LEED Gold
certificationIncome Contribution:
More meaningfully
from 2026

» Strengthening IMM Building's Position as a Regional Outlet Destination

Committed Occupancy
after AEI: 98.6%Outlet Stores:
>100Estimated Cost:
S\$48 millionROI Target:
~8%Income Contribution:
Phase 1 and 2
progressively since
4Q 2024

Imagine walking through Marina Bay and seeing the skyscrapers light up at night. Did you know you can own a slice of these buildings without ever setting foot inside a boardroom? That's the beauty of Singapore REITs.

They give retail investors access to some of the largest commercial, industrial, and digital assets in the region. With a few clicks, you can be part-owner of a shopping mall, logistics warehouse, or even a high-security data centre.

REITs have become one of the most popular investment options in Singapore. They pay regular distributions, provide diversification, and allow investors to ride the property market without the hassle of buying physical real estate.

continued... [Can You Trade SG REITs: Understanding the Strategies and Opportunities]

But here's the big question many investors ask: can you trade REITs like stocks, or are they only for long-term holding?

The answer is both. Let's dive into three REITs across different industries below to answer the question.

CapitaLand Integrated Commercial Trust (CICT): The Office & Retail Powerhouse

CICT is Singapore's largest REIT, with a portfolio that includes some of the city's most iconic malls and offices. Think ION Orchard, Raffles City, and CapitaSpring in Raffles Place. These aren't just buildings - they are landmarks.

The REIT recently made headlines by acquiring the remaining stake in CapitaSpring. This deal wasn't small - it cost over a billion dollars. But the move strengthens CICT's dominance in the office and retail sector, and it's expected to lift distributions for investors.



Financially, CICT has been on steady ground. Revenue has been climbing as shopper traffic returns and office occupancy improves. Distributions per unit are also likely to edge higher due to ongoing AEIs being completed from time to time like the Gallileo being revamped to a modern workplace and strengthening IMM Building.

continued... [Can You Trade SG REITs: Understanding the Strategies and Opportunities]

One of the key reasons investors like CICT is stability. Its assets are located in prime areas, and the leasing demand in Singapore's CBD remains resilient. This means income is relatively predictable compared to more cyclical sectors.

Of course, risks remain as interest rates are still the biggest watch point. Higher financing costs could eat into returns. And because CICT sometimes raises capital for acquisitions, investors need to watch potential dilution.

From a trading perspective, CICT often moves in cycles depending on market interest in retail and office recovery. Short-term traders might look for opportunities during periods of weak sentiment. But for long-term holders, it remains a dependable cornerstone REIT.

Mapletree Logistics Trust (MLT): Riding the Waves of Global Trade

Now, let's switch gears to logistics. MLT is one of Asia's biggest logistics REITs with a portfolio spread across Singapore, China, Australia, Japan, and beyond. Its properties are the backbone of supply chains - warehouses, distribution centres, and industrial hubs.



continued... [Can You Trade SG REITs: Understanding the Strategies and Opportunities]

The logistics theme has been one of the strongest secular growth drivers over the past decade. The rise of e-commerce has supercharged demand for warehouse space. Every online order needs storage, sorting, and delivery - and MLT benefits from this directly.

Recently, MLT faced some headwinds when its latest quarter showed a dip in distributions due to weaker regional currencies and the absence of one-off gains. This spooked investors and led to short-term weakness in the share price.

But here's the bigger picture. Logistics demand is not slowing. Companies are diversifying supply chains, adding more distribution centres closer to end consumers, and preparing for just-in-case inventory strategies. All this supports long-term growth for MLT.

From an investor's perspective, MLT usually offers a healthy dividend yield in the 5 to 7% range. The yield alone makes it attractive compared to fixed deposits or government bonds.

For traders, MLT is interesting because it is sensitive to global trade headlines. Concerns about China's economy, currency fluctuations, or export data often push the price around. This creates opportunities for nimble investors who can ride the ups and downs while collecting distributions.

Long-term, the thesis remains solid as logistics is not going out of fashion. If anything, it will become even more critical as Asia's middle class expands and e-commerce continues to grow.

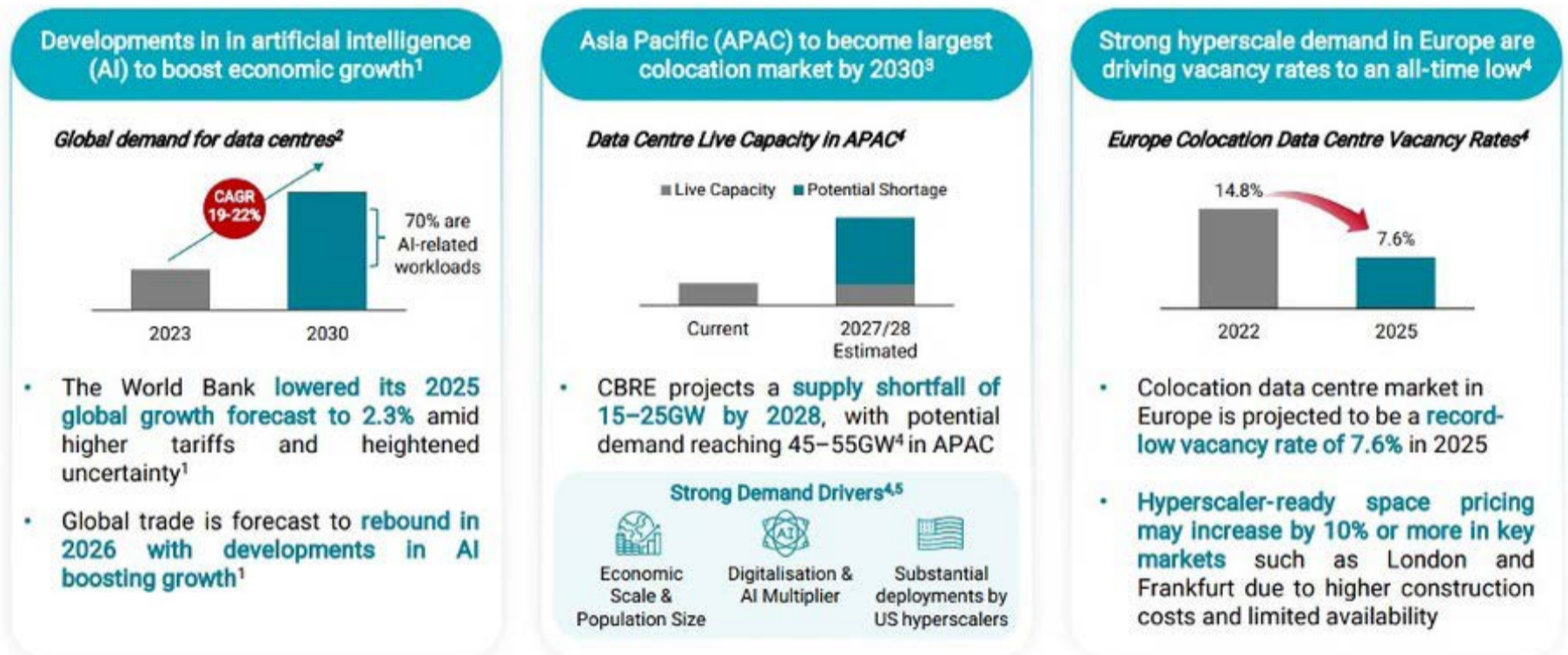
Keppel DC REIT (KDC REIT): The Infrastructure for the Digital Age

Finally, let's move into the digital world. Keppel DC REIT is a pure-play data centre REIT - the first of its kind in Asia. It owns over 20 data centres across Singapore, Europe, China, and Australia.

continued... [Can You Trade SG REITs: Understanding the Strategies and Opportunities]

These assets are not just warehouses with servers. They are the backbone of modern life. Every time you stream a video, back up a file, or use AI tools, data centres like those owned by KDC are working behind the scenes.

Artificial Intelligence Powering the Data Centre Future



KDC has enjoyed strong growth with recent results showing double-digit increases in both distributable income and distributions per unit. Investors cheered as demand for cloud services, AI, and digitalisation surged.

What makes KDC unique is its link to technology. Most REITs are tied to traditional property cycles. But KDC sits at the intersection of real estate and tech infrastructure. That gives it a powerful long-term growth angle.

Naturally, there are risks because data centres are inherently capital-intensive. Building or upgrading them costs a lot, and financing conditions matter. Competition is also heating up as more players enter the sector.

Analysts remain bullish on KDC because demand for data storage is

continued... [Can You Trade SG REITs: Understanding the Strategies and Opportunities]

only going one way - up. For retail investors, it's a way to capture the tech boom while still enjoying steady REIT distributions.

Traders might find KDC more volatile than CICT or MLT. Its share price often reacts to global tech sentiment. When AI demand stories heat up, KDC rallies. When tech valuations cool, KDC can pull back quickly.

Conclusion: Trading or Holding with Purpose

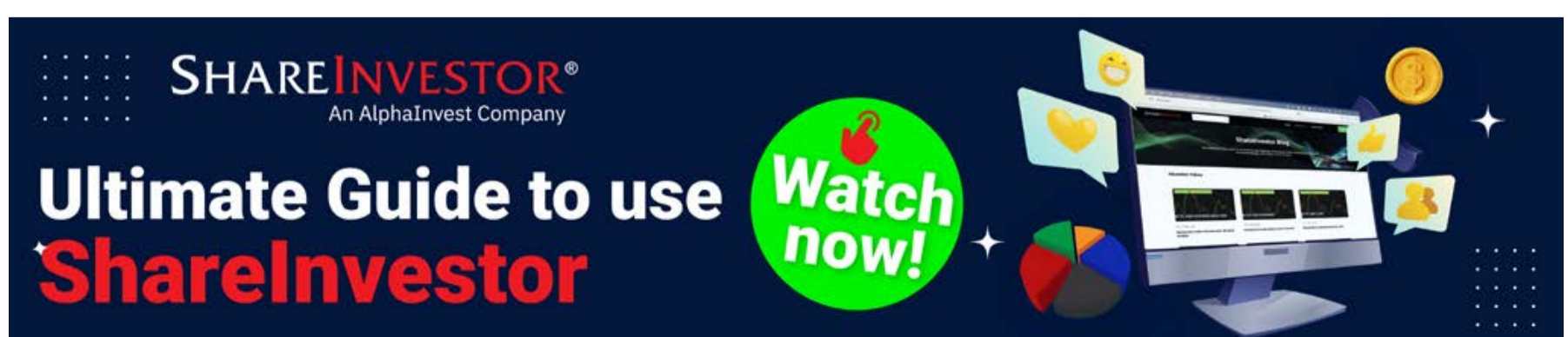
So, can you trade SG REITs? The answer is yes. But it depends on your strategy.

For retail investors, the key is not just buying blindly. Each REIT has its own story. Understanding the fundamentals - distributions, acquisitions, debt, and demand drivers - is crucial.

Trading REITs works if you pay attention to cycles, interest rates, and sector sentiment. Holding REITs works if you want consistent distributions and diversification. The best approach may even be a mix of both.

At the end of the day, Singapore REITs open a door for investors to own pieces of world-class assets. Whether you trade them actively or hold them patiently, they remain one of the most accessible and rewarding ways to build wealth.

Disclaimer: *This article is for informational purposes only and not intended as investment advice.*



SHAREINVESTOR®
An AlphaInvest Company

Ultimate Guide to use
ShareInvestor

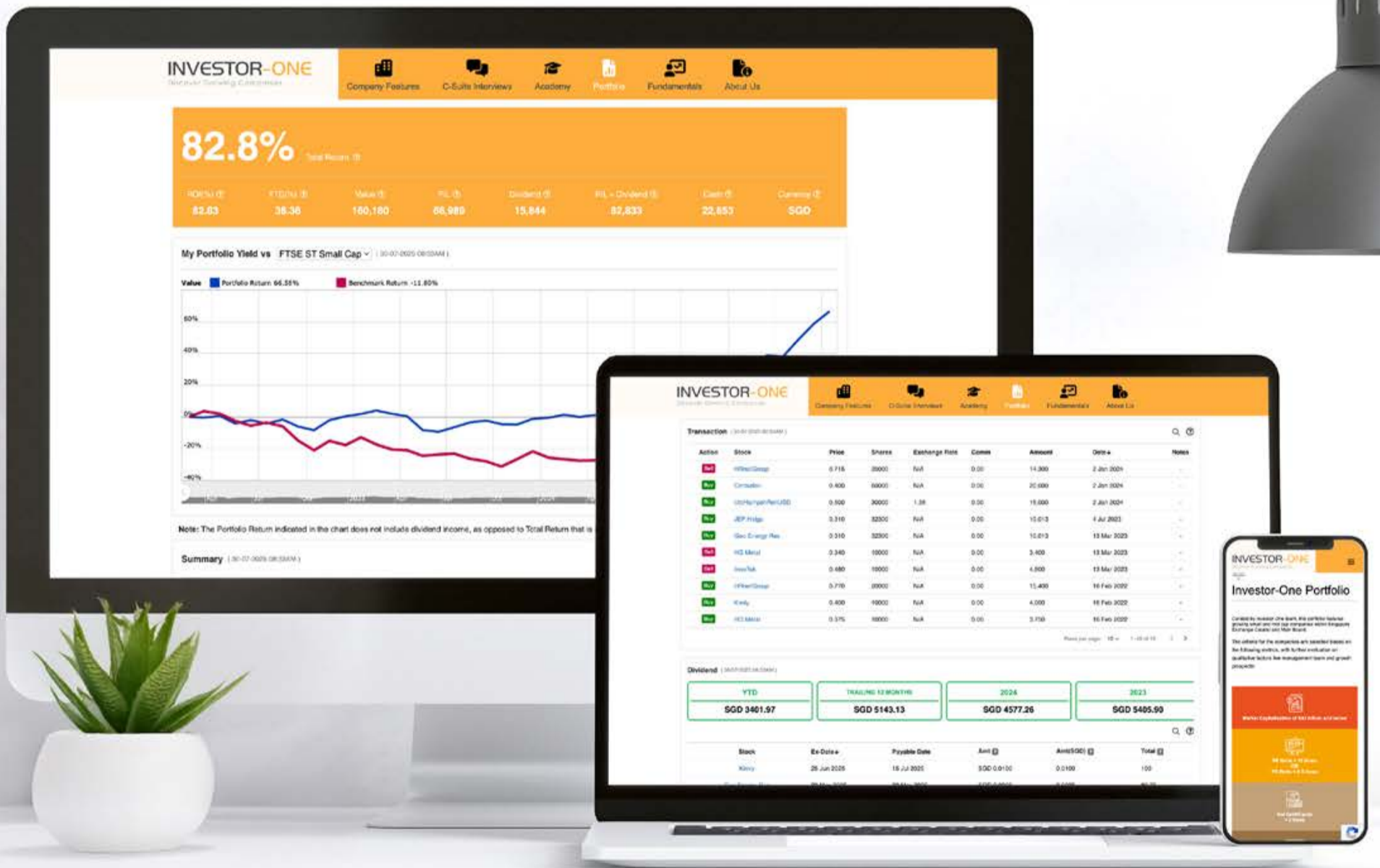
Watch now!

The banner features a dark blue background with a computer monitor displaying a website, a pie chart, and several floating icons including a heart, a coin, and a person. A green circular button with a red hand cursor icon and the text 'Watch now!' is prominent.

INVESTOR-ONE PORTFOLIO

Curated and managed by the Investor-One team under ShareInvestor, this **free-to-access** portfolio will feature local small and mid-cap companies within Singapore Exchange's Mainboard and Catalyst.

Join us on the journey and watch as we manage a locally vested portfolio with a **fund of \$100,000**.



ENTER PORTFOLIO 

Investor-One Portfolio

(As at yesterday)

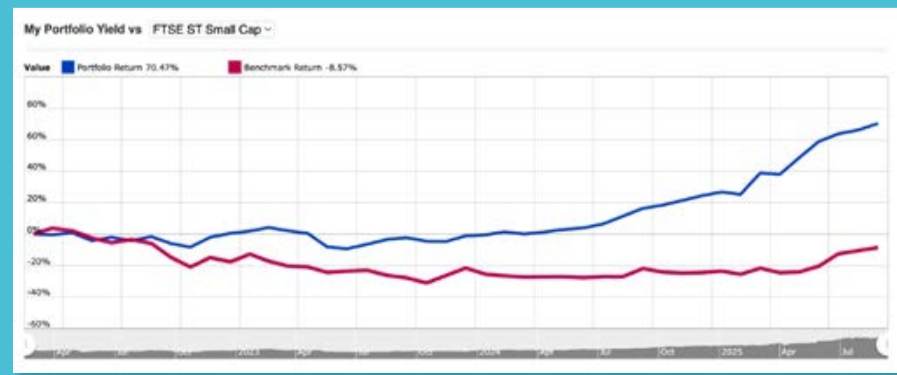
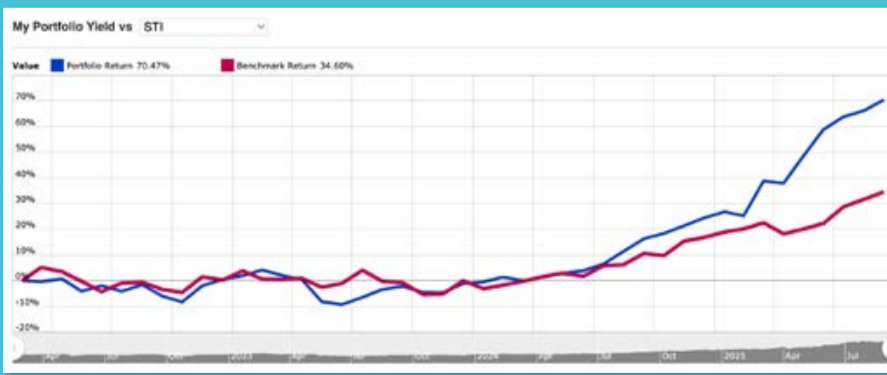
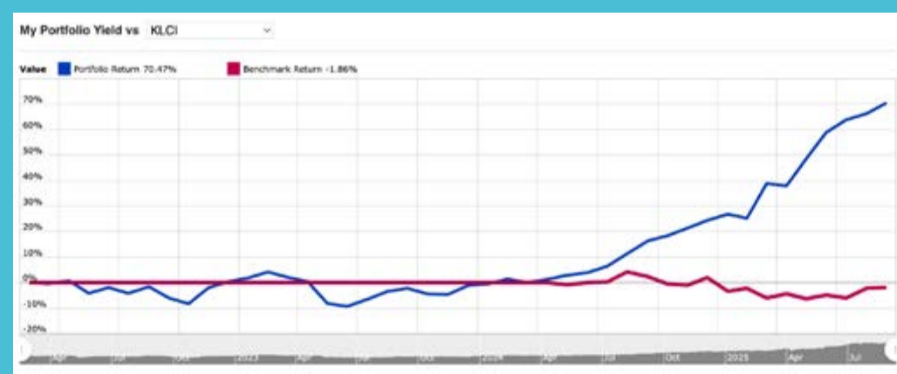
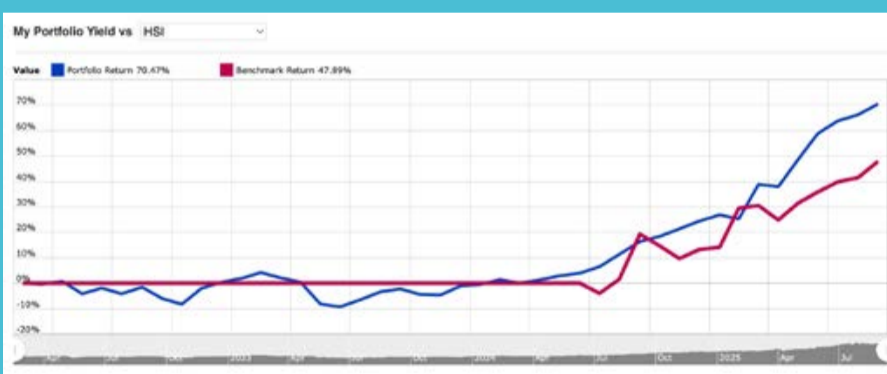
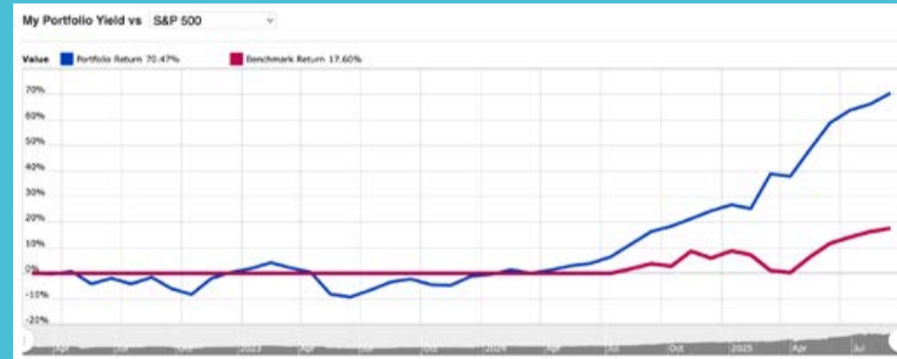
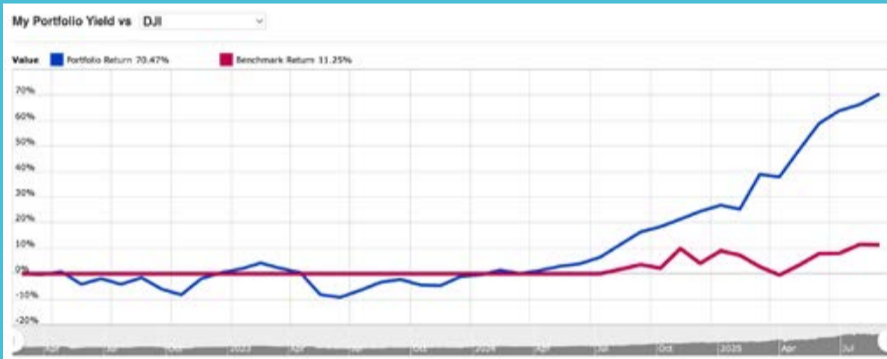
Curated by Investor-One team, this portfolio features growing small and mid cap companies within Singapore Exchange Catalist and Main Board.

The criteria for the companies are selected based on the following metrics, with further evaluation on qualitative factors like management team and growth prospects:

 <p>Market Capitalisation of S\$3 billion and below</p>	 <p>PE Ratio < 15 times OR PB Ratio < 0.5 times</p>
 <p>Net Debt/Equity < 2 times</p>	 <p>Positive Free Cash Flow</p>

89.0% Total Return

YTD(%)	Value	P/L	Dividend	P/L + Dividend	Cash	Currency
43.13	164,440	71,249	17,755	89,004	24,564	SGD



Note: The Portfolio Return indicated in the chart does not include dividend income, as opposed to Total Return that is inclusive of Dividend Income.

continued on next page...

INVESTOR-ONE

Discover Growing Companies

Summary

Open Positions

Unrealized P/L ↑ 75,249

Name↑	Weightage	Entry	Last	Chg	Share	P/L	Div	P/L + Div	Cost	Value
Centurion	53.51%	0.4	1.76	-	50000	68,000 (340.00%)	3,500	71,500	20,000	88,000
Geo Energy Res	8.64%	0.31	0.44	-	32300	4,199 (41.94%)	2,374	6,573	10,013	14,212
Hock Lian Seng	5.72%	0.29	0.47	-	20000	3,600 (62.07%)	1,110	4,710	5,800	9,400
Hyphens Pharma	10.49%	0.3	0.345	-	50000	2,250 (15.00%)	3,870	6,120	15,000	17,250
JEP Hldgs	5.11%	0.31	0.26	-	32300	-1,615 (-16.13%)	-	-1,615	10,013	8,398
Kimly	2.25%	0.4	0.37	-	10000	-300 (-7.50%)	636	336	4,000	3,700
Nordic	2.58%	0.395	0.425	-	10000	300 (7.59%)	700	1,000	3,950	4,250
+ UtdHampshReitUSD	11.69%	0.681	0.5	-	30000	-1,185 (-5.80%)	3,191	2,006	20,415	19,230

Summary

Closed Positions

Realized Profit ↓ -4,000

Name↑	Avg Buy	Avg Sell	Shares	Comm	P/L	P/L + Div	Proceeds
HG Metal	0.375	0.34	10000	-	-350	50	3,400
HRnetGroup	0.77	0.715	20000	-	-1,100	674	14,300
InnoTek	0.735	0.48	10000	-	-2,550	-2,350	4,800

Transaction

Action	Stock	Price	Shares	Exchange Rate	Comm	Amount	Date↓	Notes
Sell	HRnetGroup	0.715	20000	N/A	0.00	14,300	2 Jan 2024	-
Buy	Centurion	0.400	50000	N/A	0.00	20,000	2 Jan 2024	-
Buy	UtdHampshReitUSD	0.500	30000	1.36	0.00	15,000	2 Jan 2024	-
Buy	JEP Hldgs	0.310	32300	N/A	0.00	10,013	4 Jul 2023	-
Buy	Geo Energy Res	0.310	32300	N/A	0.00	10,013	13 Mar 2023	-
Sell	HG Metal	0.340	10000	N/A	0.00	3,400	13 Mar 2023	-
Sell	InnoTek	0.480	10000	N/A	0.00	4,800	13 Mar 2023	-
Buy	HRnetGroup	0.770	20000	N/A	0.00	15,400	16 Feb 2022	-
Buy	Kimly	0.400	10000	N/A	0.00	4,000	16 Feb 2022	-
Buy	HG Metal	0.375	10000	N/A	0.00	3,750	16 Feb 2022	-
Buy	InnoTek	0.735	10000	N/A	0.00	7,350	16 Feb 2022	-
Buy	Nordic	0.395	10000	N/A	0.00	3,950	16 Feb 2022	-
Buy	Hyphens Pharma	0.300	50000	N/A	0.00	15,000	16 Feb 2022	-
Buy	Hock Lian Seng	0.290	20000	N/A	0.00	5,800	16 Feb 2022	-
Cash	Deposit	-	-	N/A	-	100,000	15 Feb 2022	-

continued on next page...

Dividend

YTD	TRAILING 12 MONTHS	2024	2023
SGD 5318.44	SGD 5383.04	SGD 4571.04	SGD 5405.90

Stock	Ex-Date	Payable Date	Amt	Amt(SGD)	Total
Centurion	04 Sep 2025	25 Sep 2025	SGD 0.0200	0.0200	1000
Geo Energy Res	20 Aug 2025	29 Aug 2025	SGD 0.0010	0.0010	32.30
UtdHampshReitUSD	20 Aug 2025	26 Sep 2025	SGD 0.0123	0.0158	473.43
UtdHampshReitUSD	20 Aug 2025	26 Sep 2025	SGD 0.0086	0.0110	331.01
Nordic	19 Aug 2025	04 Sep 2025	SGD 0.0083	0.0083	82.80
Kimly	25 Jun 2025	15 Jul 2025	SGD 0.0100	0.0100	100
Geo Energy Res	20 May 2025	30 May 2025	SGD 0.0025	0.0025	80.75
Nordic	07 May 2025	19 May 2025	SGD 0.0090	0.0090	89.90
Hyphens Pharma	06 May 2025	23 May 2025	SGD 0.0150	0.0150	750
Geo Energy Res	06 May 2025	16 May 2025	SGD 0.0040	0.0040	129.20
Centurion	06 May 2025	26 May 2025	SGD 0.0200	0.0200	1000
Hock Lian Seng	04 May 2025	16 May 2025	SGD 0.0180	0.0180	360
UtdHampshReitUSD	25 Feb 2025	28 Mar 2025	SGD 0.0076	0.0098	292.52
UtdHampshReitUSD	25 Feb 2025	28 Mar 2025	SGD 0.0129	0.0166	496.52
Kimly	03 Feb 2025	14 Feb 2025	SGD 0.0100	0.0100	100
Geo Energy Res	15 Dec 2024	08 Jan 2025	SGD 0.0020	0.0020	64.60
Centurion	05 Sep 2024	30 Sep 2024	SGD 0.0150	0.0150	750
Geo Energy Res	20 Aug 2024	29 Aug 2024	SGD 0.0020	0.0020	64.60
UtdHampshReitUSD	20 Aug 2024	27 Sep 2024	SGD 0.0133	0.0171	511.92
UtdHampshReitUSD	20 Aug 2024	27 Sep 2024	SGD 0.0068	0.0087	261.73
Nordic	19 Aug 2024	04 Sep 2024	SGD 0.0085	0.0085	85.30
Kimly	26 Jun 2024	15 Jul 2024	SGD 0.0100	0.0100	100
Geo Energy Res	22 May 2024	31 May 2024	SGD 0.0020	0.0020	64.60
Centurion	08 May 2024	31 May 2024	SGD 0.0150	0.0150	750
Geo Energy Res	08 May 2024	17 May 2024	SGD 0.0060	0.0060	193.80
Nordic	07 May 2024	17 May 2024	SGD 0.0059	0.0059	58.80
Hyphens Pharma	07 May 2024	24 May 2024	SGD 0.0086	0.0086	430
Hock Lian Seng	05 May 2024	17 May 2024	SGD 0.0150	0.0150	300
UtdHampshReitUSD	28 Feb 2024	28 Mar 2024	SGD 0.0132	0.0169	508.07
UtdHampshReitUSD	28 Feb 2024	28 Mar 2024	SGD 0.0082	0.0105	315.62
Kimly	29 Jan 2024	09 Feb 2024	SGD 0.0112	0.0112	112
Geo Energy Res	20 Nov 2023	29 Nov 2023	SGD 0.0040	0.0040	129.20
HRnetGroup	30 Aug 2023	11 Sep 2023	SGD 0.0187	0.0187	374
Geo Energy Res	28 Aug 2023	06 Sep 2023	SGD 0.0050	0.0050	161.50
Nordic	17 Aug 2023	04 Sep 2023	SGD 0.0100	0.0100	100.10
Hyphens Pharma	16 Aug 2023	31 Aug 2023	SGD 0.0360	0.0360	1800
Kimly	27 Jun 2023	14 Jul 2023	SGD 0.0056	0.0056	56
Geo Energy Res	29 May 2023	08 Jun 2023	SGD 0.0050	0.0050	161.50
Hyphens Pharma	09 May 2023	24 May 2023	SGD 0.0111	0.0111	555
Geo Energy Res	08 May 2023	17 May 2023	SGD 0.0400	0.0400	1292
Nordic	07 May 2023	17 May 2023	SGD 0.0091	0.0091	90.60
Hock Lian Seng	07 May 2023	19 May 2023	SGD 0.0100	0.0100	200
HRnetGroup	03 May 2023	12 May 2023	SGD 0.0187	0.0187	374
Kimly	26 Jan 2023	08 Feb 2023	SGD 0.0112	0.0112	112
HRnetGroup	28 Aug 2022	06 Sep 2022	SGD 0.0213	0.0213	426
Nordic	16 Aug 2022	02 Sep 2022	SGD 0.0116	0.0116	116.20
Kimly	29 Jun 2022	15 Jul 2022	SGD 0.0056	0.0056	56
Hyphens Pharma	11 May 2022	25 May 2022	SGD 0.0067	0.0067	335
InnoTek	10 May 2022	25 May 2022	SGD 0.0200	0.0200	200
HRnetGroup	08 May 2022	18 May 2022	SGD 0.0300	0.0300	600
Hock Lian Seng	08 May 2022	20 May 2022	SGD 0.0125	0.0125	250
HG Metal	05 May 2022	20 May 2022	SGD 0.0400	0.0400	400
Nordic	05 May 2022	17 May 2022	SGD 0.0061	0.0061	60.80
Nordic	05 May 2022	17 May 2022	SGD 0.0015	0.0015	15.20

This portfolio is managed by Investor-One research team, under ShareInvestor.

Disclaimer: 1. The Investor-One portfolio is aggregated for educational and illustration purposes only. It is curated based on fixed financial parameters as indicated above. The investor-one team select their stocks solely base on the these fixed parameters. The featured companies are for information only and does not constitute investment advice. 2. The investor-one team is not licensed by any financial authority in Singapore. You should consult your Trading Representative or Financial Advisors before making any financial decisions. 3. Current Price, current value and gain/loss (%) under current portfolio are based on 10 minutes delayed data. 4. Purchase Price and Exit Price are based on EOD price. 5. The views and opinions expressed does not necessarily reflect those of ShareInvestor Pte Ltd nor any related companies of ShareInvestor Pte Ltd.

SIGN UP FOR Invest NOW

INVESTOR ACADEMY provides a weekly tutorial on Investor Education. **COMPANY SPOTLIGHT** gives you valuable insights into small and mid-cap companies with great potential. **SIGN UP** for Investor Education Events.



Regular columns include **Market At A Glance** • **Regional Markets** • **Top Dividend / Growth / Value Stocks** • **Investor-One Portfolio** • **Top Significant Insider Activity** • **Investment Books On sale** • **Investor Relations PLC Announcements**



SCAN OR CLICK ME



Via email, weekly

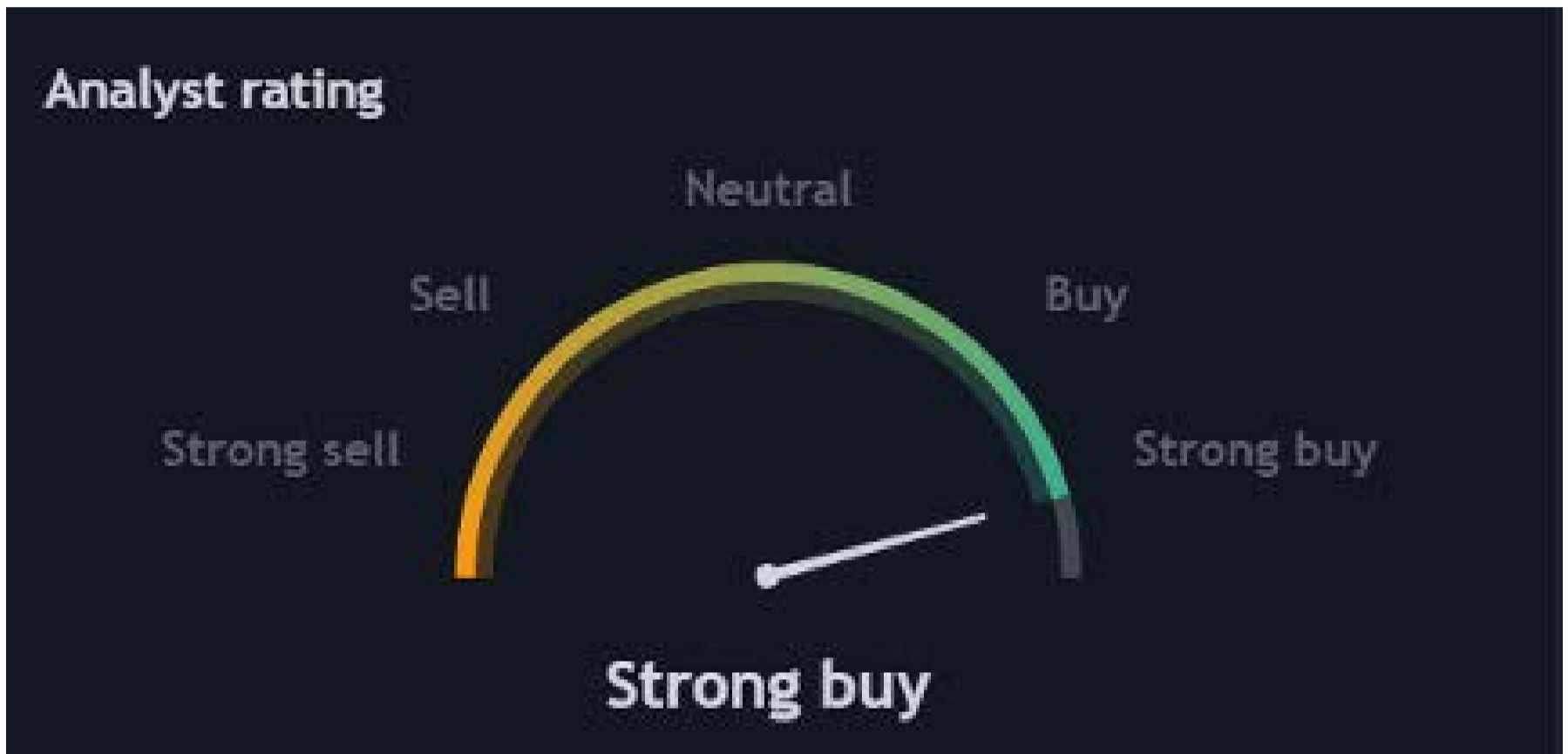
www.shareinvestor.com/investsg

IT'S FREE!

COMPANY SPOTLIGHT

ANALYST UPGRADES: Top 3 Stocks Earning BUY Ratings This Month

Investor-One / Tue, Aug 26, 9:00 AM



Here's a thought-provoking start: What if the next big opportunity in your portfolio isn't in flashy tech or trendy startups, but in three understated Singapore-listed companies that analysts are actively upgrading with solid BUY ratings?

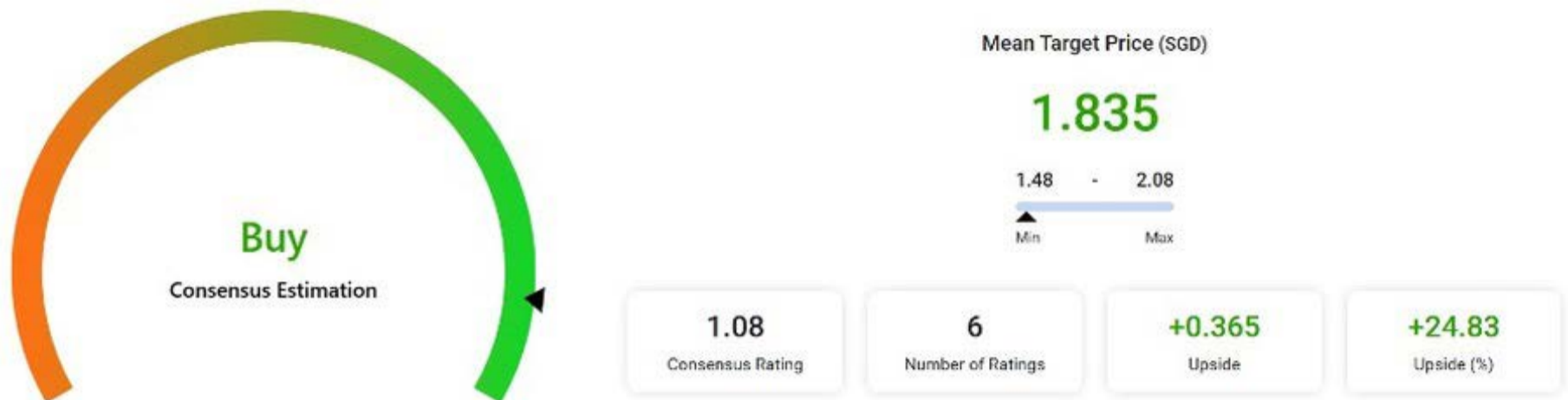
This month, Frencken, CapitaLand Investment, and Seatrium emerged as compelling picks - each presenting its own growth story, market catalysts, and upside story. Let's unpack them, one by one, and explore why analysts are dialing up the confidence meter.

Frencken: Riding the Semiconductor Recovery Wave

Frencken, a Singapore-listed industrial manufacturer, is known for its role in the semiconductor supply chain, providing precision components across various end-markets. Recently, analysts

continued... [Analyst Upgrades: Top 3 Stocks Earning BUY Ratings This Month]

have doubled down on the stock, consistently issuing BUY recommendations with raised target prices.



Source: ShareInvestor Pro

From a valuation standpoint, consensus target prices are pointing to more than 24% upside from its recent trading level of around S\$1.37. The fundamental thrust behind this optimism lies in Frencken's diversified exposure and sticky client relationships.

Despite some short-term softness in analytical life sciences and European semiconductor markets, the company's strong balance sheet and strategic manufacturing expansions in Singapore and the U.S. point to a long-term rebound.

The cyclical nature of the semiconductor sector cannot be ignored. Frencken stock has oscillated between S\$1 and S\$2 over the past few years, reflecting sector volatility.

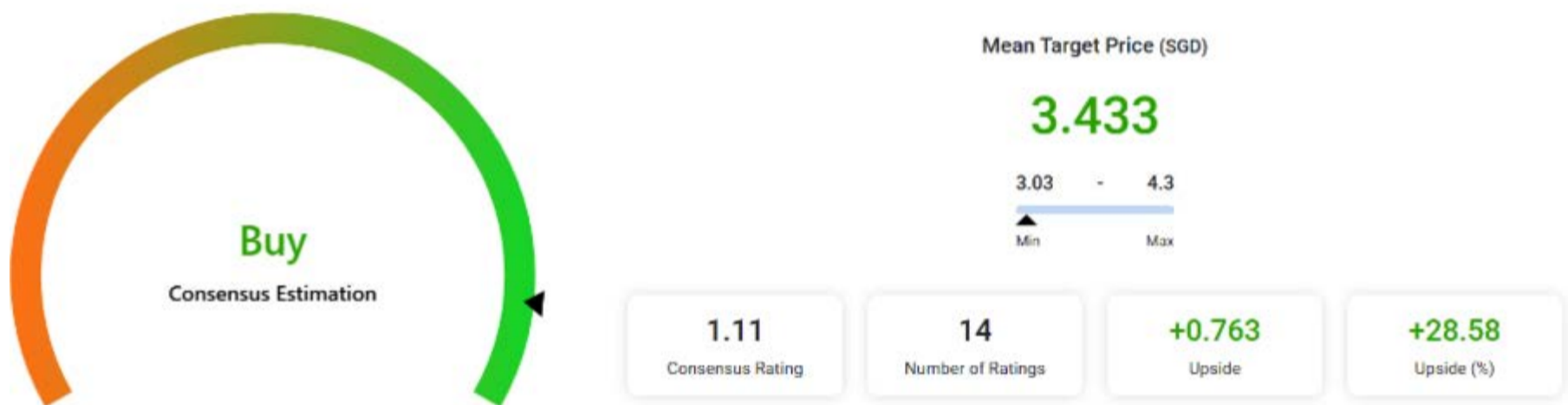
But if you're buying into the thesis that capital goods and tech demand will recover - and that Frencken is a cleaner lever on that cycle - you're entering at a compelling point in the cycle.

CapitaLand Investment: A Real Estate Giant with Renewed Cover

Shifting gears to real estate, CapitaLand Investment (CLI) is making waves with its bullish momentum. Analysts are calling it a "Strong Buy," buoyed by target prices climbing steadily.

continued... [Analyst Upgrades: Top 3 Stocks Earning BUY Ratings This Month]

The underlying story here is attractive valuation and dividends. CLI is trading near 0.9x its net tangible asset value, with a dividend yield of around 4.6% - an appealing combo in today's low-yield world.



Source: ShareInvestor Pro

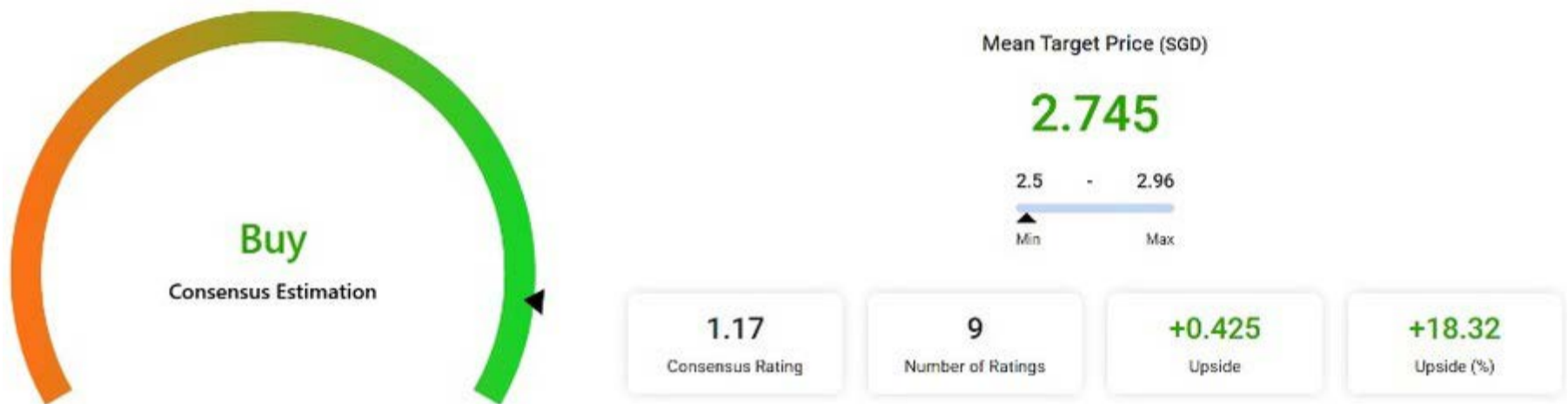
Analysts have reaffirmed BUY ratings with upside projections of more than 25% from current levels, reflecting confidence in the group's ability to drive sustainable growth.

What makes CLI stand out right now isn't just the numbers, but also the broader macro context.

As China reopens and urban recovery gains pace, policy tailwinds are favoring increased investment in real estate and infrastructure. CLI, with its diversified platform and scale, is well poised to ride that wave.

Seatrium: From Neutral to Strong Buy, Fueled by Mega Contracts

Now, for a less obvious but equally compelling story: Seatrium, the recently renamed offshore and marine powerhouse, was formed from the consolidation of Sembcorp Marine and Keppel Offshore & Marine.

continued... [Analyst Upgrades: Top 3 Stocks Earning BUY Ratings This Month]*Source: ShareInvestor Pro*

Analysts have upgraded the stock from "Neutral" to BUY, citing strong valuation, a massive contract backlog, and even potential share buybacks as upside levers.

The lift in sentiment is backed up by numbers. Consensus estimates now show an average potential upside of 18% from its current level of around S\$2.21.

Beyond valuation, the real kicker is Seatrium's contract wins. The company recently secured a US\$15 billion Floating Production Storage & Offloading (FPSO) contract spanning several years. This significantly boosts long-term revenue visibility and warrants a fresh look at the company's earnings outlook.

Conclusion: What These Upgrades Mean for Your Portfolio

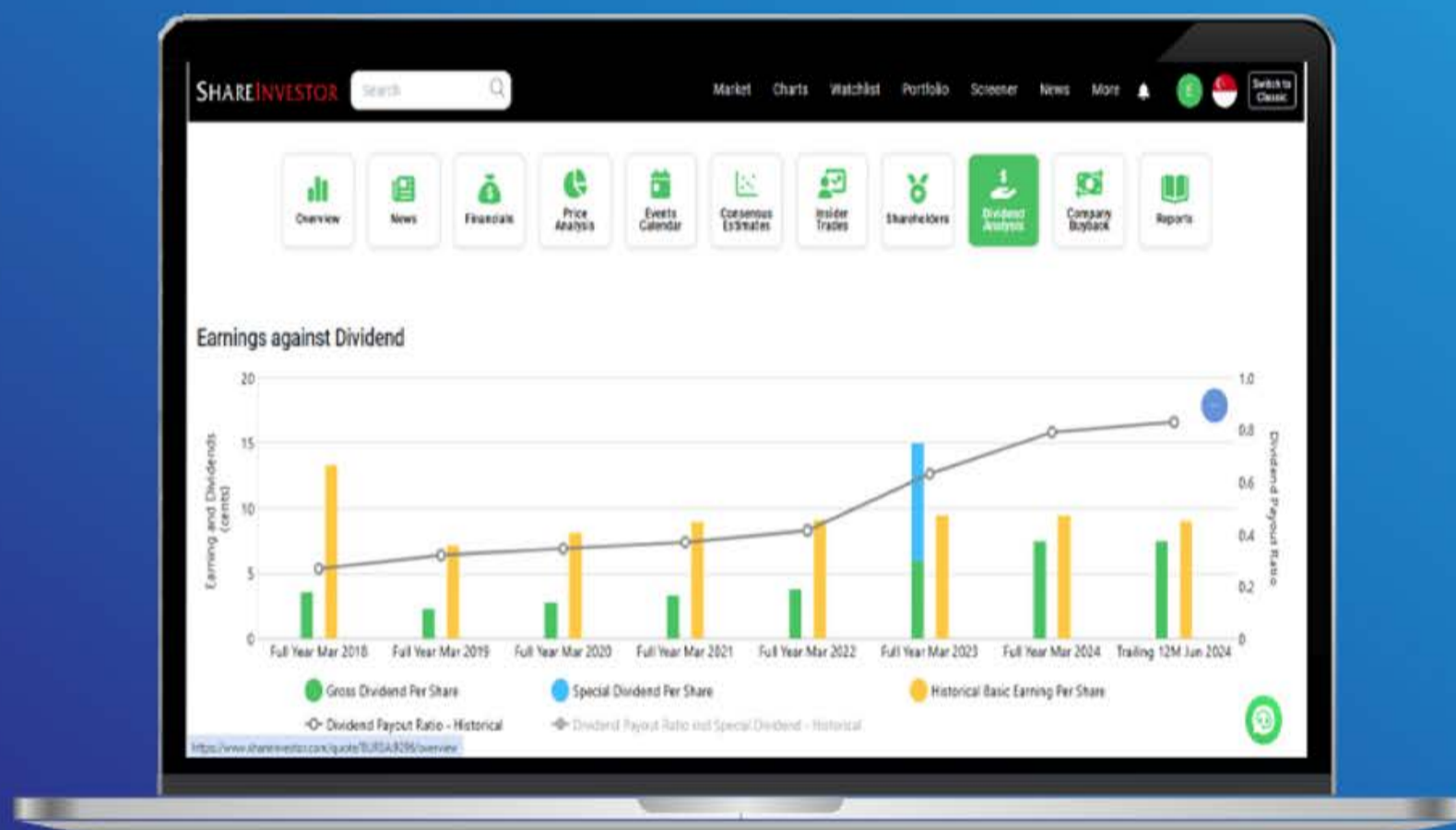
In summary, the analyst BUY upgrades on the 3 stocks illustrate how market analysts are identifying compelling value and catalyst-rich setups across different segments of Singapore's market this month.

Whether you're aiming for cyclical alpha, defensive yield, or strategic inflection, there's a case to be made in each. Always weigh your risk tolerance and investment horizon, but these names deserve a seat at the discussion table.

Disclaimer: *This article is for informational purposes only and not intended as investment advice.*

SHAREINVESTOR[®]
An AlphaInvest Company

Tired of low returns? Let's talk high-paying Dividends!



- ✓ **Top Dividend Picks Right Now**
- ✓ **Insider Tips** – Advanced strategies for experienced investors
- ✓ **Easy-to-Follow Tutorial**

Get the most out of dividends, use our Dividend Analysis function –
Click to Watch Our Tutorial Below!

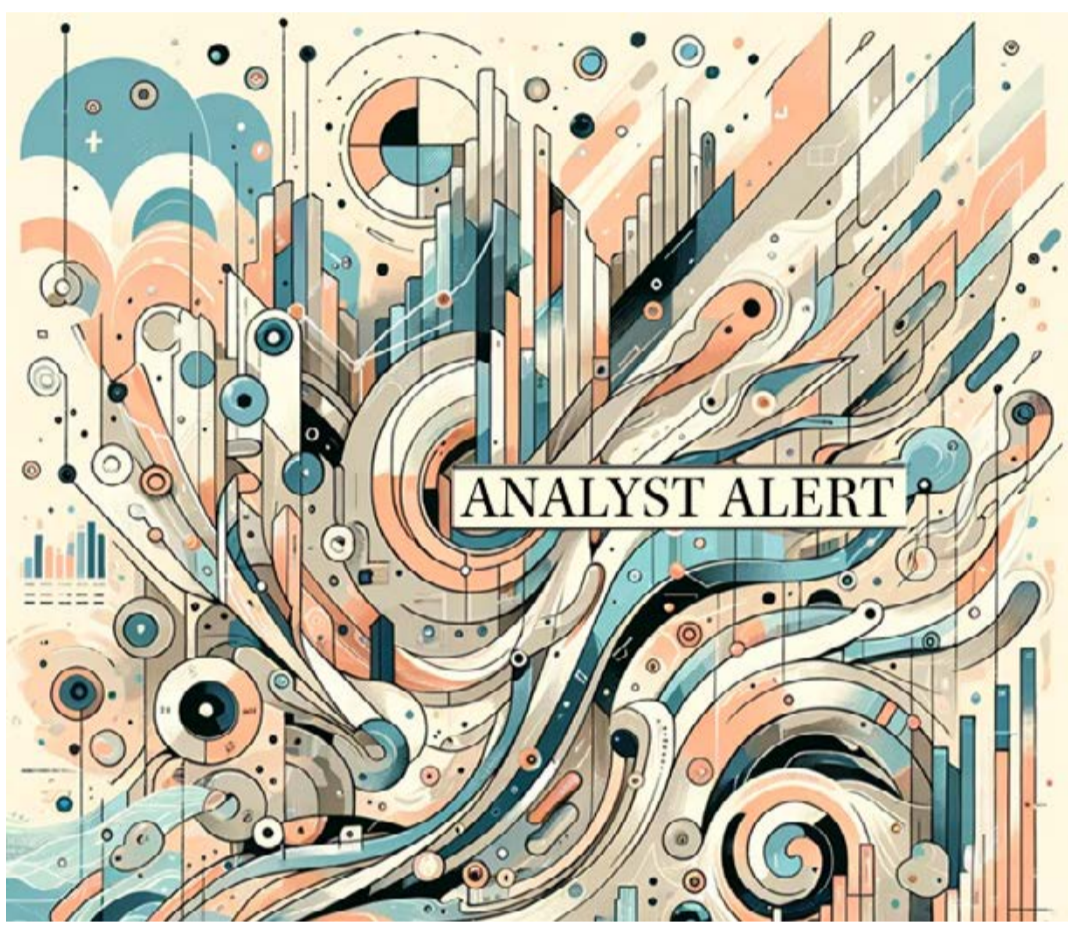
Upgrade Your Dividend Strategy Here



COMPANY SPOTLIGHT

ANALYST ALERT: Recommendation And Consensus On ComfortDelGro, Hong Leong Asia, OCBC

Investor-One / Thu, Sep 4, 8:00 PM



CGS International: [ComfortDelGro](#)

Current Price: S\$1.47 (as of 4 Sep 2025)
Target Price: S\$ 1.70
Recommendation: **ADD**
Up/downside: + 15.6%



Mean Target Price (SGD)



1.19 Consensus Rating	8 Number of Ratings	+0.258 Upside	+17.52 Upside (%)
--------------------------	------------------------	------------------	----------------------

continued... [Analyst Alert: Recommendation And Consensus On ComfortDelGro, Hong Leong Asia, OCBC]

ComfortDelGro (CDG) has acquired the remaining 46.5% stake in CityCab from ST Engineering for S\$116.3m, making it a wholly owned subsidiary. The deal, struck at ~13x P/E versus CDG's 14x FY25F, is seen as fairly valued and modestly earnings accretive (+~1.7% to earnings assuming full debt funding at 4% interest). Net gearing rises only slightly from 19% to 22%, leaving the balance sheet robust. Full ownership unlocks operational synergies in fleet management, technology upgrades, and EV transition, while unifying the Comfort and CityCab brands across Singapore's >8,400 taxi fleet. Strategically, management sees this as reinforcing point-to-point mobility as a core pillar, with overseas expansion opportunities in the UK and Australia adding long-term upside. Analysts reiterate ADD with a target price of S\$1.70, supported by 5–6% dividend yields, fair valuations, and global tender wins as re-rating catalysts, though integration risks and margin pressures remain key watchpoints.

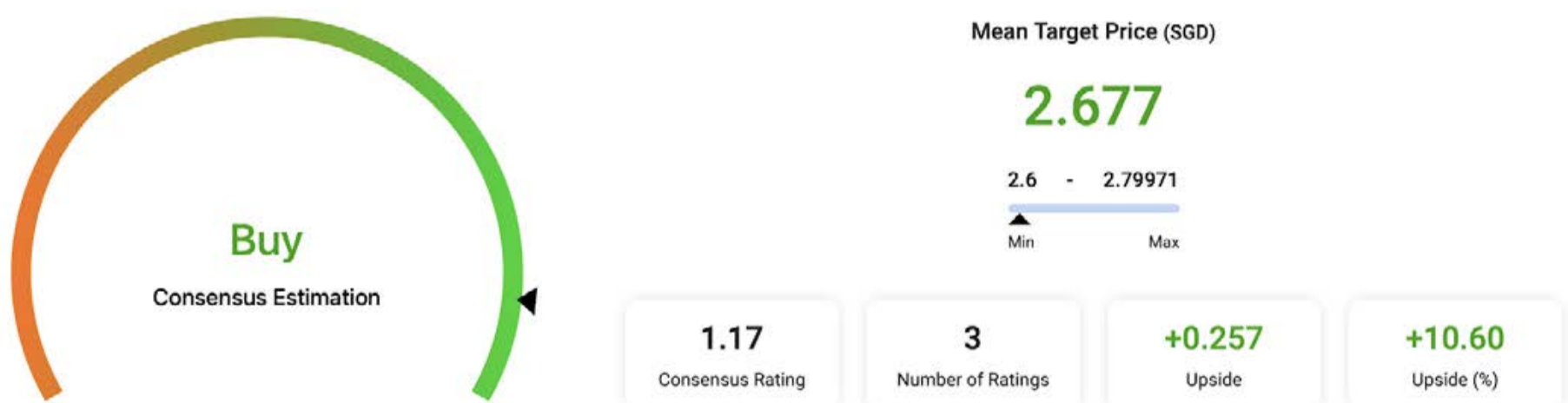
UOB KayHian: [Hong Leong Asia](#)

Current Price: S\$2.41 (as of 4 Sep 2025)

Target Price: S\$ 2.63

Recommendation: ADD

Up/downside: + 6.5%



Hong Leong Asia (HLA) reported 1H25 revenue of S\$2.83b (+26% yoy) and PATMI of S\$56m (+13% yoy), beating consensus by 10% and achieving 50% of full-year estimates. Growth was driven by China Yuchai, where diesel engine shipments rose ~30% yoy to

continued... [Analyst Alert: Recommendation And Consensus On ComfortDelGro, Hong Leong Asia, OCBC]

>250,000 units, boosting net profit by 56%. Interim DPS of S\$0.02 was declared, double 1H24. The balance sheet remains undergeared, with net cash rising to S\$749m and free cash flow surging nearly fivefold to S\$397m, implying a 29% FCF yield and potential for higher final dividends. Segmentally, powertrain profit rose 56% to S\$97m, while building materials fell 11% to S\$37m. Analysts maintain BUY with a SOTP-based TP of S\$2.63, valuing powertrain and building materials at ~8x 2026F EBITDA. Share price catalysts include stronger-than-expected engine/building materials sales and higher dividend payout within the next six months.

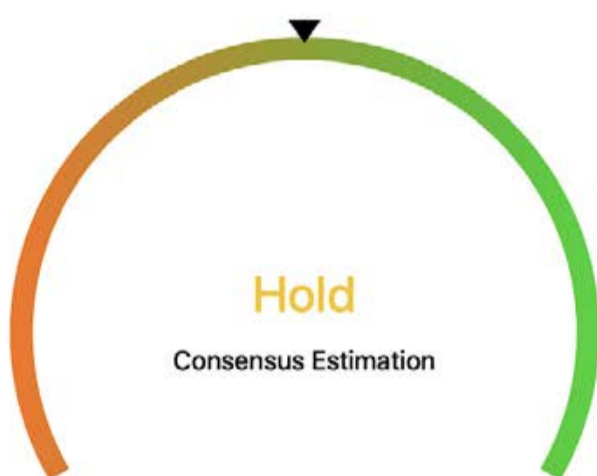
UOB KayHian: [OCBC Bank](#)

Current Price: S\$16.85 (as of 4 Sep 2025)

Target Price: S\$ 20.15

Recommendation: **ADD**

Up/downside: + 19.6%



Mean Target Price (SGD)

17.478

15.08 - 20.15

Min Max

1.79

Consensus Rating

17

Number of Ratings

+0.588

Upside

+3.48

Upside (%)

Oversea-Chinese Banking Corp (OCBC) has unveiled a capital return plan of S\$2.5b over two years, comprising special dividends (10% of net profit for 2024–25, lifting payout ratio to 60% annually) and share buybacks through 2025–26. For FY24, the board proposed a final dividend of 41 S cents and a special dividend of 16 S cents, bringing the total to 101 S cents. Management targets an incremental S\$3b revenue over 2023–25 via cross-border trade flows, Asian wealth, the new economy, and sustainable financing. OCBC remains the most

continued... [Analyst Alert: Recommendation And Consensus On ComfortDelGro, Hong Leong Asia, OCBC]

well-capitalised Singapore bank with CET-1 CAR of 15.3% (2Q25), providing flexibility for inorganic growth. Analysts maintain BUY with a TP of S\$20.15, based on 1.44x 2025F P/B under the Gordon Growth Model (ROE 12.3%, COE 8.5%). Attractive 2025 dividend yield of 5.8% and upcoming buybacks are expected to support the share price over the next 6–12 months.

Disclaimer: *This article is for informational purposes only and not intended as investment advice.*

EXPERIENCE

The New ShareInvestor Website



Advanced Data Visualizations



Comprehensive Portfolio Feature



Enhanced Look & Feel



SHAREINVESTOR[®]
An AlphaInvest Company



SHAREINVESTOR[®]
An AlphaInvest Company

Unlock Powerful REITs Insights

with ShareInvestor's New REITs Metrics Data & Screener

*Note: REITs Metrics Data and Screener are Only Available on ShareInvestor's New Platform.

Click to Access



TOP SIGNIFICANT INSIDER ACTIVITY

Data extracted from WebPro, accurate as at yesterday

Effective Change Date (Notice Date)	Stock Name	Buyer / Seller Name (Classification *)	Security Types ^b	Acquired / (Disposed) ['000]			Price	Closing Price ^d	No. of Shares After Trade ['000]				
				Direct	Deemed	Total			Direct	Deemed	Total	% Held ^e	
09 Sep 2025 (10 Sep 2025)	Procurri	EXEO Global Pte. Ltd. [SSH]	S/U		44,071	44,071		0.315			328,686	328,686	100.000
09 Sep 2025 (10 Sep 2025)	Procurri	Lwi Tong Boon [Dir/CEO]	S/U	-300		-300	0.320	0.315					
09 Sep 2025 (10 Sep 2025)	Procurri	Ng Loh Ken Peter [Dir/CEO]	S/U	-140		-140	0.320	0.315					
09 Sep 2025 (10 Sep 2025)	Procurri	EXEO Global Asset Holdings Pte. Ltd. [SSH]	S/U		44,071	44,071		0.315	284,615	44,071	328,686		100.000
09 Sep 2025 (10 Sep 2025)	Procurri	EXEO Group, Inc [SSH]	S/U		44,071	44,071		0.315			328,686	328,686	100.000
09 Sep 2025 (10 Sep 2025)	Procurri	Mathew George Jordan [Dir/CEO]	S/U	-3,172		-3,172	0.320	0.315					
09 Sep 2025 (10 Sep 2025)	Procurri	Lim Puay Koon [Dir/CEO]	S/U	-140		-140	0.320	0.315					
09 Sep 2025 (10 Sep 2025)	Procurri	Wong Quee Quee, Jeffrey [Dir/CEO]	S/U	-140		-140	0.320	0.315					
10 Sep 2025 (10 Sep 2025)	Totm Tech	KHOO THOMAS CLIVE [SSH]	S/U	10,238		10,238	0.032	0.030	258,206			258,206	17.210
02 Sep 2025 (10 Sep 2025)	GS Hldg	ZTS HOLDINGS PTE. LTD. [SSH]	S/U		100	100		0.038			179,297	179,297	17.270
22 Aug 2025 (10 Sep 2025)	GS Hldg	ZTS HOLDINGS PTE. LTD. [SSH]	S/U		156	156		0.038			179,197	179,197	17.260
21 Aug 2025 (10 Sep 2025)	GS Hldg	ZTS HOLDINGS PTE. LTD. [SSH]	S/U		124	124		0.037			179,041	179,041	17.250
09 Sep 2025 (10 Sep 2025)	Top Glove	KUMPULAN WANG PERSARAAN (DIPERBADANKAN) [SSH]	S/U	-3,434		-3,434		0.184	493,340	91,410	584,750		7.293
10 Sep 2025 (10 Sep 2025)	CapLand Ascendas REIT	CapitaLand Ascendas REIT Management Limited [Tm/Rp]	S/U	2,443		2,443		2.800	2,791		2,791		0.061
10 Sep 2025 (10 Sep 2025)	Geo Energy Res	Dhamma Surya [Dir/CEO]	S/U,R/O/W	2,400		2,400		0.440	36,059		36,059		2.530
04 Sep 2025 (10 Sep 2025)	NamCheong	Leong Seng Keat [Dir/CEO]	S/U		277	277	0.720	0.715	14,052	950	15,002		3.800
10 Sep 2025 (10 Sep 2025)	Geo Energy Res	Charles Antony Melati [Dir/CEO]	S/U,R/O/W	7,200		7,200		0.440	260,545		260,545		18.280
04 Sep 2025 (10 Sep 2025)	IHH	EMPLOYEES PROVIDENT FUND BOARD [SSH]	S/U	-776		-776		2.100	1,010,944		1,010,944		11.441
08 Sep 2025 (10 Sep 2025)	Audience	Ng Yan Meng [Dir/CEO]	S/U	37		37		0.300	2,845	189,600	192,445		83.690
08 Sep 2025 (10 Sep 2025)	Audience	Ng Yan Meng [Dir/CEO]	S/U	1		1		0.300	2,874	189,600	192,474		83.710
08 Sep 2025 (10 Sep 2025)	Audience	Ng Yan Meng [Dir/CEO]	S/U	20		20		0.300	2,873	189,600	192,473		83.700
08 Sep 2025 (10 Sep 2025)	Audience	Ng Yan Meng [Dir/CEO]	S/U	9		9		0.300	2,854	189,600	192,454		83.700
18 Jul 2024 (10 Sep 2025)	UMS	abrdrn plc [SSH]	S/U		-1,483	-1,483		1.220			35,200	35,200	4.954
18 Jul 2024 (10 Sep 2025)	UMS	abrdrn Holdings Limited [SSH]	S/U		-1,483	-1,483		1.220			35,200	35,200	4.954
09 Sep 2025 (10 Sep 2025)	Samko Timber	KINGYUE INTERNATIONAL HOLDING PTE. LTD. [SSH]	S/U		5,983,856	5,983,856		0.002			5,983,856	5,983,856	69.210
09 Sep 2025 (10 Sep 2025)	Samko Timber	Lin Yiyi [SSH]	S/U		5,983,856	5,983,856		0.002			5,983,856	5,983,856	69.210
08 Sep 2025 (09 Sep 2025)	Addvalue Tech ^a	Economic Development Innovations Singapore Pte. Ltd. [SSH]	S/U	-35,000		-35,000		0.028	161,700		161,700		4.920
08 Sep 2025 (09 Sep 2025)	Stamford Land	Ow Chio Kiat [Dir/CEO]	S/U	40		40	0.420	0.420	626,757	59,045	685,802		46.225
05 Sep 2025 (09 Sep 2025)	Stamford Land	Ow Chio Kiat [Dir/CEO]	S/U	40		40	0.420	0.420	626,717	59,045	685,762		46.223
09 Sep 2025 (09 Sep 2025)	JMH USD	Stephen Gore [Dir/CEO]	S/U	17		17	USD 59.69	59.150					

Disclaimer: The information on this page is provided as a service to readers. It does not constitute financial advice and/or any investment recommendations. Past performance is not indicative of future results. We assume no liability for damages resulting from or arising out of the use of such information. It would be best if you did your own research to make your personal investment decisions wisely or consult a licenced investment advisor.



Protect yourself with the ScamShield Suite



ScamShield Helpline
Call to check if something is a scam



ScamShield app
Check, detect and block scams



scamshield.gov.sg
One-stop portal on scams



ScamShield Alert social channels
Receive the latest information on scams



IR Announcements

Lum Chang: FY2025 Net Profit Up 112% To S\$15.6 Million, Declared S\$0.02 Dividend.

The Group reported revenue of \$462.9 million in FY25, a decrease of 8% or \$37.5 million from \$500.4 million in FY24. Overall, the Group reported a profit before income tax of \$22.7 million in FY25 compared to a profit before income tax of \$12.5 million in FY24.

[READ MORE](#)

LUM CHANG


ThaiBev: Successfully Issues THB38 Billion Debentures.

Thai Beverage Public Company Limited has successfully issued its latest Thai Baht debentures, raising an aggregate principal amount of Baht 38,000 million through a private placement to institutional investors and high-net-worth investors. The debentures attracted strong demand, with total subscriptions reaching 2.97 times the initial amount. The debentures comprise an initial principal of Baht 28,000 million and a greenshoe option of Baht 10,000 million. They have been assigned an "AA(th)" rating by Fitch Ratings (Thailand) Limited, which is considered investment grade.

[READ MORE](#)

Karin: Overcomes Sales Challenges, Maintains Net attributable Profit In FY2025.

Net attributable profit rose modestly, driven primarily by better IT segment profitability and reduced finance costs. Proposes a final dividend of 3.88 Hong Kong cents per share, which together with the interim dividend paid of 4.90 Hong Kong cents per share, brings total dividend to 8.78 Hong Kong cents per share in respect of FY2025.

[READ MORE](#)



CDL HTrust: To Rebrand Maldives Resort As The Halcyon Private Isles Maldives, Autograph Collection.

CDL Hospitality Trusts announces that, effective 1 November 2025, the resort currently known as Raffles Maldives Meradhoo will be rebranded as The Halcyon Private Isles Maldives, Autograph Collection. With effect from 31 October 2025, by mutual agreement, the Resort will cease to operate under the "Raffles Hotels & Resorts" brand. The Resort will continue operations without interruption during and after the transition.

[READ MORE](#)

Micro-Mechanics: Wins New Recognitions For Corporate Governance & Investor Relations In 2025.

Group's third Gold and ninth overall Best Investor Relations award from Singapore Corporate Awards, bringing total number of SCA accolades since listing to 18. Ranked 30th out of 467 SGX-listed companies in the Singapore Governance and Transparency Index 2025. Nearly 40 awards in recognition of corporate governance since listing, attesting to the Group's resolute commitment to highest standards and best practices.

[READ MORE](#)


**Samudera: Wins Best Managed Board Award (Silver) At The Singapore Corporate Awards 2025.**

Samudera Shipping Line Ltd is pleased to have been conferred the Silver Award for Best Managed Board at the Singapore Corporate Awards 2025, in the mid-cap category of listed companies with a market capitalisation of between S\$300 million and under S\$1 billion. The Best Managed Board Award recognises boards that demonstrate strong corporate governance standards, with an aim of raising governance benchmarks and inspire continuous improvement. This is Samudera's first accolade at the SCA.

[READ MORE](#)**Tiong Woon: Recognised With Dual Silver Wins At The Singapore Corporate Awards 2025.**

Tiong Woon Corporation Holding Ltd has been awarded two Silver awards at the prestigious Singapore Corporate Awards 2025 in the following category, Best Managed Board Award (Small Cap Category - Below \$300 million in market cap) and Best Risk Management Award (Small Cap Category - Below \$300 million in market cap). Organised by the Institute of Singapore Chartered Accountants, Singapore Institute of Directors, and The Business Times, the SCA recognises excellence in corporate governance, leadership and transparency among listed companies in Singapore.

[READ MORE](#)**HRnetGroup: HRnetOne Shanghai Wins 2024 Shanghai Talent Scout Award.**

HRnetGroup Limited's subsidiary HRnet One (Shanghai) Limited has received the 2024 Shanghai Talent Scout Award conferred by the Shanghai Municipal Human Resources and Social Security Bureau. The objective of the Award is to encourage Human Resource Service Providers to select and recommend world-renowned talents or senior-level talents for employment by enterprises in Shanghai city. Such talents should possess core competences in intellectual property and deep expertise acquired from Fortune 500 corporations, to represent China on the global competitive stage. This award reaffirms the expertise in identifying and placing highly qualified candidates to work with the right corporations. It is the third year that HRnetOne has received this award.

[READ MORE](#)**Centurion: Expands Malaysia Portfolio With Acquisition Of Johor-Based Dormitory Operator.**

Acquisition of Harum Megah which owns six PBWA assets with a total capacity of c.7,197 beds, expanding Centurion's Malaysian portfolio by 25% to c.35,610 beds. With an established customer base and healthy occupancies, the six fully operational assets will be immediately accretive to earnings. Reaffirms Centurion's intent to double its bed capacity in Malaysia over the next five years, in-line with the letter of intent signed under the JS-SEZ, with a potential investment range between RM300 million to RM500 million. Harum Megah's PBWAs are licensed CLQs, compliant with Malaysia's Act 446, reinforcing Centurion's focus on safe and professionally managed accommodation.

[READ MORE](#)

 SIGN UP FOR INVEST WEEKLY

IR Announcements

IR ANNOUNCEMENTS

Global Invacom: Introduces Breakthrough Government Band Multi-Orbit XRJ Transceiver.

Global Skyware, part of the Global Invacom Group, has launched its government band, multi-orbit XRJ transceiver. Optimised for the demanding government and defence market, the XRJ transceiver covers the full extended Ka-band frequency range in both receive and transmit. It boasts 25 Watts of power, and also comes in 5w, 10w and 20w variants, the highest of any transceiver on the market and supports connectivity in Geostationary Earth Orbit, Medium Earth Orbit and Low Earth Orbit, enabling consistent communications for any application on land, sea or air.

[READ MORE !\[\]\(66cfc90684fb13a564448e87c1beaba2_img.jpg\)](#)



Food Empire: Nets Biggest Haul At 2025 Annual International ARC Awards.

Food Empire Holdings Limited has net its biggest haul of six awards at the 2025 Annual International ARC Awards, including four Golds, one Silver and one Honours. This marks the 17th year that Food Empire has been recognised at the annual event, with 2025 being its most outstanding year-to-date. The Group was awarded Gold in four different categories, Traditional Annual Report, Cover Photo/Design, Illustrations, and Design/Graphics, all within the Beverage & Food Manufacturer group. In addition, Food Empire received a Silver award for PDF Version of Annual Report and an Honours distinction for Interior Design.

[READ MORE !\[\]\(bfcc647664f7707d10750b1dd4ee0f19_img.jpg\)](#)

SIGN UP FOR Invest *now*

INVESTOR ACADEMY provides a weekly tutorial on Investor Education. **COMPANY SPOTLIGHT** gives you valuable insights into small and mid-cap companies with great potential. **SIGN UP** for Investor Education Events.

Regular columns include **Market At A Glance** . **Regional Markets** . **Top Dividend / Growth / Value Stocks** . **Investor-One Portfolio** . **Top Significant Insider Activity** . **Investment Books On sale** . **Investor Relations PLC Announcements**

SCAN OR CLICK ME 



Via email, weekly
IT'S FREE!



www.shareinvestor.com/investsg

Don't Miss These Must-Read Investment Gems!

CLICK ON BOOK FOR MORE DETAILS

