

# Invest

A Weekly e-Publication by SHAREINVESTOR

ISSUE  
**154**  
29 AUGUST  
2025

Scan or click me



Via email, every Friday

Data and Investing Ideas

## PLUS

### REGIONAL MARKETS

on page 04

### TOP STOCKS OF THE WEEK

#### Dividend Stocks

on page 06

#### Growth Stocks

on page 08

#### Value Stocks

on page 10

### INVESTOR- ONE PORTFOLIO

on pages 18-21

### INSIDER TRADES

on page 33



## ALSO

**BBR Holdings Delivers S\$114.4 Million Revenue In 1H2025, With Growing Project Pipeline**

On pages 23-26

## COMPANY SPOTLIGHT

# How To Identify & Better Trade Potential Small & Mid-Cap Stocks

On pages 12-17

**02** MARKET AT A GLANCE

**04** REGIONAL MARKETS

**06** DIVIDEND STOCKS

**08** GROWTH STOCKS

**10** VALUE STOCKS

**12** COMPANY SPOTLIGHT: HOW TO IDENTIFY AND BETTER TRADE

POTENTIAL SMALL AND MID-CAP STOCKS

**18** INVESTOR-ONE PORTFOLIO

**23** COMPANY SPOTLIGHT: BBR HOLDINGS DELIVERS S\$114.4 MILLION REVENUE IN 1H2025, WITH GROWING PROJECT PIPELINE

**28** COMPANY SPOTLIGHT: Q & M DENTAL GROUP REPORTS 10% INCREASE IN

PROFIT AFTER TAX FOR CORE DENTAL BUSINESS TO S\$13.7 MILLION IN 1H2025, STRENGTHENED BY WAR CHEST OF S\$130 MILLION.

**33** INSIDER TRADES

**35** IR ANNOUNCEMENTS

**38** INVESTMENT BOOKS



# SHAREINVESTOR®

An AlphaInvest Company

Invest with Knowledge

## MARKETING & SALES

### SALES MANAGER

Nigel Lim

### ADMIN

Gillian Ong

Dawn Ong

## CONTENT

### DIRECTOR

Edward Stanislaus

## INVESTOR RELATIONS

### GROUP MANAGING DIRECTOR

Edward Stanislaus

### DIRECTOR

Zhao Yanjing

[yanjing.zhao@shareinvestor.com](mailto:yanjing.zhao@shareinvestor.com)

### SENIOR MANAGER

Vivien Ong

[vivien.ong@shareinvestor.com](mailto:vivien.ong@shareinvestor.com)

### SENIOR QC EXECUTIVE

Poh Lam Huat

[lamhuat@shareinvestor.com](mailto:lamhuat@shareinvestor.com)

## ALPHA INVEST HOLDINGS

### BOARD OF DIRECTORS

#### CHAIRMAN

Patrick Daniel

#### GROUP CEO

Christopher Lee

#### GROUP COO

Lim Dau Hee

#### GROUP MD

Shanison Lin

## SHAREINVESTOR PTE LTD

151 Lorong Chuan #04-07B  
New Tech Park (Lobby G)  
Singapore 556741

T (65) 6958 8000

F (65) 6958 8044

E [admin@shareinvestor.com](mailto:admin@shareinvestor.com)

W [www.ShareInvestor.com](http://www.ShareInvestor.com)

[Advertise with us](#)

#### Disclaimer:

The services information and data made available on or accessible via this newsletter including facts, views, advice, analyses, opinions and recommendations of individuals and organisations are for general information purposes only.

It is not intended as investment advice and must not be relied upon as such. ShareInvestor Pte Ltd and its third party information providers are not giving or purporting to give or representing or holding themselves out as giving financial, investment, tax, legal and other professional advice.

Advice from a securities professional is strongly advised.

# Market at a Glance

Over 5 trading days as at yesterday

[www.shareinvestor.com](http://www.shareinvestor.com)

market data at your fingertips



ShareInvestor WebPro ([www.shareinvestor.com](http://www.shareinvestor.com))

Prices > Stock Prices > SGX > click Stocks tab

1. mouse over **Ranking** > select **Top Active** > mouse over **Column Layout** > select **Edit Customs** > select **Name** > select **Volume** > select **Last Done Price** > mouse over **Column Layout** > select **Custom**
2. mouse over **Ranking** > select **Top Turnover** > mouse over **Column Layout** > select **Edit Customs** > select **Name** > select **Last Done Price** > select **Value** > mouse over **Column Layout** > select **Custom**
3. mouse over **Ranking** > select **Top Gainers (Over 5 Trading Days)** > mouse over

4. mouse over **Ranking** > select **Top Losers (Over 5 Trading Days)**
5. mouse over **Ranking** > select **Top % Gainers (Over 5 Trading Days)**
6. mouse over **Ranking** > select **Top % Losers (Over 5 Trading Days)**

## Singapore Top Actives

(as at yesterday)

Name	Last Done	Volume
CapAllianz	0.002	60,428.0
Genting Sing	0.725	48,784.1
BACUI TECH	0.002	44,891.5
PacificRadiance	0.077	44,827.7
HSI 26200MBeCW250929	0.051	44,397.0
Addvalue Tech^	0.028	36,382.3
Hiap Seng Ind	0.027	34,393.8
ISOTeam	0.080	31,987.9
Geo Energy Res	0.360	27,711.2
Singtel	4.310	25,496.6

## Top Gainers

(over 5 Trading days as at yesterday)

Name	Last Done	5 Days Chg
NA24300E 540601	122.001	23.001
SPDR S&P500 US\$	648.000	9.240
GLD SG\$	402.790	8.990
GLD US\$	313.000	6.970
N523100W 280801	100.001	3.000
NA21200W 511001	88.011	2.000
XT SingGovBond SG\$	167.600	1.660
NIO Inc. USD OV	6.440	1.440
JMH USD	59.530	1.380
Kuaisho 5xLongUB261030	2.930	0.950

## Top Losers

(over 5 Trading days as at yesterday)

Name	Last Done	5 Days Chg
MSFT 3xLongSG261006	5.250	-1.810
Amundi MSIndia US\$	31.650	-0.920
Meituan HK SDR 5to1	3.360	-0.620
IS INDIA CLIMATE S\$D	17.720	-0.590
N522100N 270901	99.601	-0.555
PetroCH 5xLongSG270427	2.210	-0.470
Kuaisho 5xShortSG270127	0.625	-0.430
IS INDIA CLIMATE US\$	13.780	-0.320
Meituan 5xLongSG261027	0.120	-0.300
Jardine C&C	28.410	-0.280

## Singapore Top Turnover

(as at yesterday)

Name	Last Done	Value
DBS	50.330	162,667,840
Singtel	4.310	109,492,643
UOB	35.300	95,775,789
OCBC Bank	16.750	59,298,024
CapLand IntCom T	2.260	36,445,842
YZJ Shipbldg SGD	2.920	35,929,018
Genting Sing	0.725	35,411,949
ST Engineering	7.660	34,420,739
Keppel	8.480	29,008,980
SIA	6.590	23,938,946

## Top % Gainers

(over 5 Trading days as at yesterday)

Name	Last Done	5 Days % Chg
Santak	0.109	263.33
Samko Timber	0.003	200.00
SMIC 5xLongSG270316	0.510	104.00
Bilibili 5xShortSG270127	0.780	100.00
CapAllianz	0.002	100.00
Capital World	0.002	100.00
HSI 7xShortSG251029	0.002	100.00
Kuaisho 5xLongSG250904	0.002	100.00
Southern Arch	0.002	100.00
Meituan 5xShortSG260513	0.710	84.42

## Top % Losers

(over 5 Trading days as at yesterday)

Name	Last Done	5 Days % Chg
SMIC 5xShortSG261223	0.062	-76.60
DBS MB ePW250930	0.001	-75.00
Meituan 5xLongUB251128	0.015	-73.68
Meituan 5xLongSG261027	0.120	-71.43
Meituan 5xLongSG251216	0.010	-70.59
SGX MB ePW250912	0.005	-68.75
Meituan 5xLongSG250924	0.005	-66.67
Sunny 5xShortUB270630	0.175	-56.25
Bilibili 5xLongSG270216	0.129	-54.74
DISA	0.001	-50.00

Jointly organized by:

SHAREINVESTOR  
An AlphaInvest CompanyInvestingNote  
By An AlphaInvest

In Collaboration with:



moomoo

# SG Invest Symposium

## Shaping Singapore's Financial Future

As Singapore continues to grow as a leading financial hub, are you ready to gain insights from the brightest minds shaping tomorrow's economy?

Join us at the SG Invest Symposium 2025, a premier event designed for investors who want to understand the opportunities and challenges that lie ahead in Singapore's financial journey.

This symposium brings together thought leaders, seasoned investors, and industry experts who will share actionable strategies and forward-looking perspectives



### Expert Keynotes:

Gain insights on global market trends, Singapore's financial landscape, and future growth opportunities.



### Panel Discussions

Engage with industry veterans as they discuss investing and navigating the evolving financial ecosystem.



### Deep-Dive Sessions

Learn practical approaches to portfolio building, wealth management, and identifying opportunities in volatile markets.

Date:

**4 October 2025 (Saturday)**

Time:

**10:00AM - 2:00PM**

Venue:

**Stephen Riady Auditorium  
@ NTUC, Level 7**

Admission:  
**Free**

[Click Here to Register](#)

# Regional Markets

Over 5 trading days



ShareInvestor WebPro ([www.shareinvestor.com](http://www.shareinvestor.com))

1. Price > Stock prices
2. select Market: Bursa / HKEX / NYSE / NASDAQ (one bourse at a time)
3. select Stocks Tab
4. select Ranking Top Gainers or Top Losers (Over 5 Trading Days)
5. Mouse over Column Layout > select Edit Customs > select Last Done Price > select 5 Days Change > select 52 Weeks High > select 52 Weeks Low > Mouse Over Column Layout > select Custom

## BURSA (RM)

### Top Gainers

Name	Last Done	5 Days Change	52 Weeks High	52 Weeks Low
NESTLE	96.000	7.000	106.000	61.800
MPI	26.440	3.520	33.100	13.300
PPB	9.390	0.770	15.000	8.230
HLIND	13.360	0.740	15.740	12.080
HLFG	17.420	0.700	20.180	15.700

### Top Losers

Name	Last Done	5 Days Change	52 Weeks High	52 Weeks Low
HEIM	20.580	-1.520	28.680	20.360
PETDAG	21.800	-0.700	23.800	16.100
CARLSBG	16.400	-0.540	21.200	16.320
F&N	26.980	-0.420	32.500	22.400
SAM	3.820	-0.370	5.430	2.980

## HONG KONG (HKD)

### Top Gainers

Name	Last Done	5 Days Change	52 Weeks High	52 Weeks Low
UNISOUND (9678)	856.000	114.500	872.500	198.000
TRIP.COM-S (9961)	552.000	51.500	598.000	358.800
SPDR GOLD TRT (2840)	2,438.000	45.000	2,504.000	1,789.000
WS-SK TAR-1200 (8566)	34.060	34.050	34.060	33.800
INVECO QQQ (3455)	4,470.000	34.000	4,573.000	3,098.000

### Top Losers

Name	Last Done	5 Days Change	52 Weeks High	52 Weeks Low
X TRNIFTY50 (3015)	2,076.000	-83.000	2,370.000	1,887.500
LAOPU GOLD (6181)	700.500	-81.500	1,108.000	84.050
MIXUE GROUP (2097)	435.000	-39.000	618.500	256.000
BILIBILI-W (9626)	172.600	-26.500	238.800	105.500
A BOS USD MM-R (83196)	7,948.400	-23.100	8,057.900	7,481.800

## NYSE (USD)

### Top Gainers

Name	Last Done	5 Days Change	52 Weeks High	52 Weeks Low
Berkshire Hathaway A	744,346.000	11,266.000	812,855.000	657,497.500
Ubiquiti	524.310	133.740	543.990	185.720
Biglari Holdings A	1,584.580	86.380	1,643.200	805.040
NVR	8,033.820	79.920	9,964.770	6,562.850
AutoZone	4,205.410	77.720	4,216.020	2,898.570

### Top Losers

Name	Last Done	5 Days Change	52 Weeks High	52 Weeks Low
McKesson	683.510	-22.490	737.890	464.415
Cencora	290.560	-12.670	309.350	218.650
Norfolk Southern	272.350	-12.000	291.695	201.630
Markel Group	1,958.240	-11.150	2,075.920	1,494.000
Northrop Grumman	586.610	-10.600	600.990	426.240

## NASDAQ (USD)

### Top Gainers

Name	Last Done	5 Days Change	52 Weeks High	52 Weeks Low
First Citizens BancShares A	2,032.560	94.930	2,412.930	1,473.620
MongoDB A	295.700	83.740	370.000	140.780
Mercadolibre	2,413.430	75.990	2,645.220	1,646.000
Monolithic Power Systems	866.320	45.580	959.640	438.860
argenx ADR	707.960	44.230	710.000	510.055

### Top Losers

Name	Last Done	5 Days Change	52 Weeks High	52 Weeks Low
Booking Holdings	5,615.680	-95.060	5,839.410	3,700.970
Newegg Commerce	60.890	-54.890	137.839	3.320
Intuit	663.170	-34.590	813.700	532.645
Duolingo A	317.930	-27.590	544.930	202.380
Costco Wholesale	949.520	-20.160	1,078.230	867.160

# SHAREINVESTOR<sup>®</sup>

An AlphaInvest Company

## Unlock Powerful REITs Insights with ShareInvestor's New REITs Metrics Data & Screener

ShareInvestor provide investors a one-stop platform for comparing Singapore's top REIT metrics. From potential upside and gearing ratios to occupancy rates and rental reversions, this powerful tool gives you a concise yet comprehensive view to identify high-potential REITs. Whether you are a retail investor or a seasoned analyst, ShareInvestor's intuitive interface makes REIT research fast, insightful, and effective.

No	Name	Last Done	Gearing %	Interest Cover Ratio	Occupancy Rate (%)	WADM	Cost of Debt (%)	WALE (Years)	Fixed-Rate Debt %	Rental Reversion Rate (%)
1	AIMS APAC Reit SIXK58U	1.310	28.900	2.400	93.600	3.000	4.300	4.400	85.000	20.000
2	Acro HTrust USD SIXKXZL	0.265	42.300	1.700	61.500	2.000	6.400	-	47.500	-
3	BHG Retail Reit SIXBMDU	0.435	40.200	1.800	94.900	-	5.900	2.800	-	-
4	CDL HTrust SIXLJ65	0.775	41.800	2.200	75.000	2.300	3.900	-	33.800	-
5	CapLand Ascendas REIT SIXA17U	2.640	38.900	3.600	91.500	3.100	3.600	3.800	73.600	11.000
6	CapLand Ascott T SIXCHRN	0.860	39.900	3.200	77.000	3.500	2.900	-	76.000	-
7	CapLand China T SIXALBU	0.680	42.600	3.000	97.700	3.900	3.510	1.700	86.000	0.500
8	CapLand India T SIXCYWU	1.010	41.500	2.500	92.000	2.800	6.000	3.400	84.500	9.000
9	CapLand IntCom T SIXC38U	2.130	38.700	3.200	96.400	4.200	3.400	3.200	78.000	10.400
10	Darwa Hse Log Tr SIXDHLU	0.565	41.100	7.400	92.100	2.500	1.690	6.700	99.300	13.000

**Click to  
Access**

# Dividend Stocks

Price & Total Shareholder Return (as at yesterday)

**DEFINITION**

Company is paying out dividend with low or moderate leverage.

**CHART GUIDE**

Total Shareholder Return (TSR) combines share price appreciation and distributions paid to show the total return to the shareholder expressed as a percentage.



ShareInvestor WebPro > Screener > Market Screener (FA & TA) > select SGX > add criteria

**A. Criteria**

- > click Add Criteria
- Fundamental Analysis Conditions tab >select (i) Dividend Yield
- Fundamental Analysis Conditions tab >select (ii) Dividend Payout (Historical)
- Fundamental Analysis Conditions tab >select (iii) Total Debt To Equity
- Fundamental Analysis Conditions tab >select (iv) Total Shareholder Returns

- Fundamental Analysis Conditions tab >select (v) Total Shareholder Returns
- Fundamental Analysis Conditions tab / >select (vi) CAGR of Dividend Per Share
- Fundamental Analysis Conditions tab >select (vii) CAGR of Dividend Per Share

**B. Conditions (Criteria Filters)**

1. Dividend Yield - select (more than) type (1) % for the past select (1) financial year(s)
2. Dividend Payout (Historical) - select (between) type (0.5) to type (1) times for the past select (1) financial year(s)
3. Total Debt to Equity – select (less than) type (1) for the past select (1) financial year(s)
4. Total Shareholder Return – select (more than) type (5) % for the past select (3) financial year(s)
5. Total Shareholder Return – select (more than) type (5) % for the past select (5) financial year(s)

6. CAGR of Dividend Per Share – select (less than) type (30) % for the past select (5) financial year(s)
  7. CAGR of Dividend Per Share – select (more than) type (1) % for the past select (5) financial year(s)
- > click Save Template > Create New Template type (Dividend Companies) > click Create
  - > click Save Template as > select Dividend Companies > click Save
  - > click Screen Now (may take a few minutes)
  - > Sort By: Select (Dividend Yield) Select (Desc)
  - > Mouse over stock name > Factsheet > looking for Total Shareholder Return



**BUMITAMA AGRI LTD.**  
(P8Z.SI)

ANALYSIS



Period	Dividend Received	Capital Appreciation	Total Shareholder Return
Short Term Return	5 Days	+0.150	+16.31%
	10 Days	+0.215	+27.43%
	20 Days	+0.305	+41.33%
Medium Term Return	3 Months	+0.405	+60.83%
	6 Months	+0.500	+47.11%
	1 Year	+0.410	+71.25%
Long Term Return	2 Years	+0.570	+132.32%
	3 Years	+0.541	+134.12%
	5 Years	+0.645	+196.61%
Annualised Return	Annualised	-	+24.32%



**KIMLY LIMITED**  
(1DO.SI)

ANALYSIS

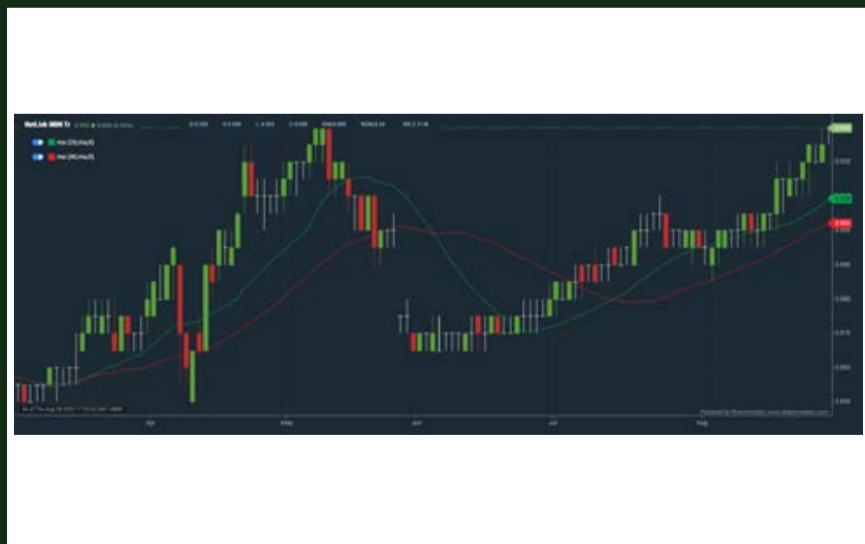


Period	Dividend Received	Capital Appreciation	Total Shareholder Return
Short Term Return	5 Days	+0.035	+1.41%
	10 Days	-0.005	-1.37%
	20 Days	-0.620	-5.26%
Medium Term Return	3 Months	+0.030	+12.12%
	6 Months	+0.045	+17.46%
	1 Year	+0.045	+20.63%
Long Term Return	2 Years	+0.035	+23.38%
	3 Years	+0.005	+14.62%
	5 Years	+0.123	+60.72%
Annualised Return	Annualised	-	+13.78%



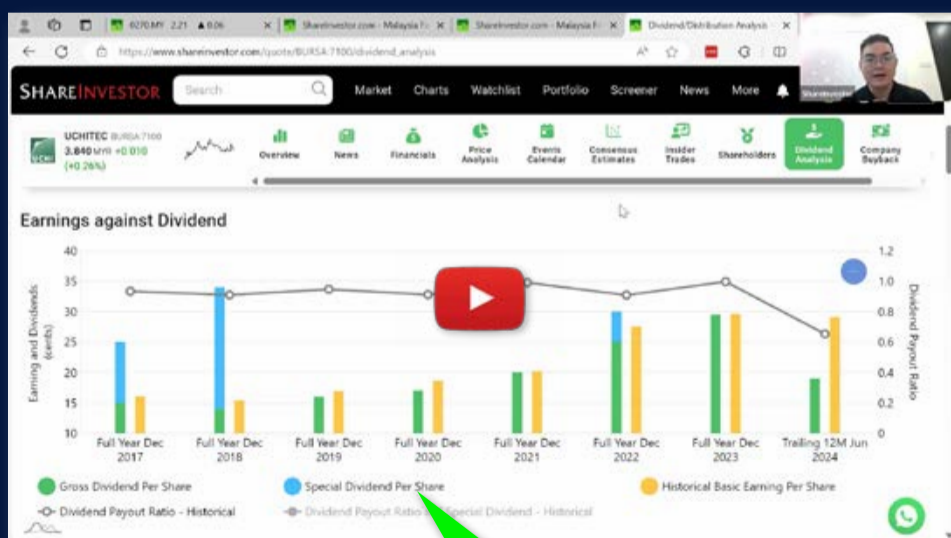
**NETLINK NBN TRUST**  
(CJLU.SI)

ANALYSIS



Period	Distribution Received	Capital Appreciation	Total Shareholder Return
Short Term Return	5 Days	+0.015	+1.64%
	10 Days	+0.030	+3.33%
	20 Days	+0.030	+3.33%
Medium Term Return	3 Months	+0.015	+6.25%
	6 Months	+0.027	+11.93%
	1 Year	+0.054	+12.48%
Long Term Return	2 Years	+0.070	+20.58%
	3 Years	+0.009	+16.47%
	5 Years	+0.035	+23.42%
Annualised Return	Annualised	-	+4.30%

# Ultimate Guide to use ShareInvestor



## YOU WILL LEARN HOW TO USE:

- Company Financials
- Market Screener
- Company Insider Trades
- Dividend Analysis
- Consensus Estimation  
*and more...*

**Watch  
now!**

# Growth Stocks

Price & Total Shareholder Return (as at yesterday)



**DEFINITION** Company revenue is growing and making good quality of earnings with positive Free Cash Flow.

**CHART GUIDE** Total Shareholder Return (TSR) combines share price appreciation and distributions paid to show the total return to the shareholder expressed as a percentage.



ShareInvestor WebPro > Screener > Market Screener (FA & TA) > select SGX > add criteria

**A. Criteria**

1. Fundamental Analysis Conditions tab >select (i) Free Cash Flow, (ii) Revenue Growth, (iii) Gross Profit (Earnings) Margin, (iv) Quality of Earnings, (v) Total Shareholder Returns, > click Add Criteria
2. Fundamental Analysis Conditions tab >select (vi) Total Shareholder Returns > click Add Criteria

**B. Conditions (Criteria Filters)**

1. Free Cash Flow – select (more than) type (1) for the past select (1) financial year(s)
  2. Revenue Growth – select (more than) type (1) for the past select (1) financial year(s)
  3. Gross Profit (Earnings) Margin - select (more than) type (30) % for the past select (1) financial year(s)
  4. Quality of Earnings – select (more than) type (1) for the past select (1) financial year(s)
  5. Total Shareholder Return – select (more than) type (5) % for the past select (3) financial year(s)
  6. Total Shareholder Return – select (more than) type (5) % for the past select (5) financial year(s)
- > click Save Template > Create New Template type (Growth Companies) > click Create

- > click Save Template as > select Growth Companies > click Save
- > click Screen Now (may take a few minutes)
- > Sort By: Select (Revenue Growth) Select (Desc)
- > Mouse over stock name > Factsheet > looking for Total Shareholder Return



**AZEUS SYSTEMS HOLDINGS LTD. (BBW.SI)**

ANALYSIS



Period	Dividend Received	Capital Appreciation	Total Shareholder Return
Short Term Return	5 Days	+0.100	+0.88 %
	10 Days	-0.290	-1.88 %
	20 Days	-0.510	-3.17 %
Medium Term Return	3 Months	+3.200	+25.81 %
	6 Months	+3.320	+27.04 %
Long Term Return	1 Year	0.554	+55.88 %
	2 Years	0.920	+91.86 %
	3 Years	1.326	+141.94 %
5 Years	1.441	+183.40 %	
Annualised Return	Annualised	-	+53.92 %



**SING HOLDINGS LIMITED (51C.SI)**

ANALYSIS



Period	Dividend Received	Capital Appreciation	Total Shareholder Return
Short Term Return	5 Days	+0.010	+2.47 %
	10 Days	+0.010	+2.47 %
	20 Days	-0.015	-3.49 %
Medium Term Return	3 Months	+0.070	+20.29 %
	6 Months	0.090	+21.43 %
Long Term Return	1 Year	0.090	+28.79 %
	2 Years	0.020	+22.64 %
	3 Years	0.030	+15.58 %
5 Years	0.050	+24.00 %	
Annualised Return	Annualised	-	+4.40 %



**ZIXIN GROUP HOLDINGS LIMITED (42W.SI)**

ANALYSIS



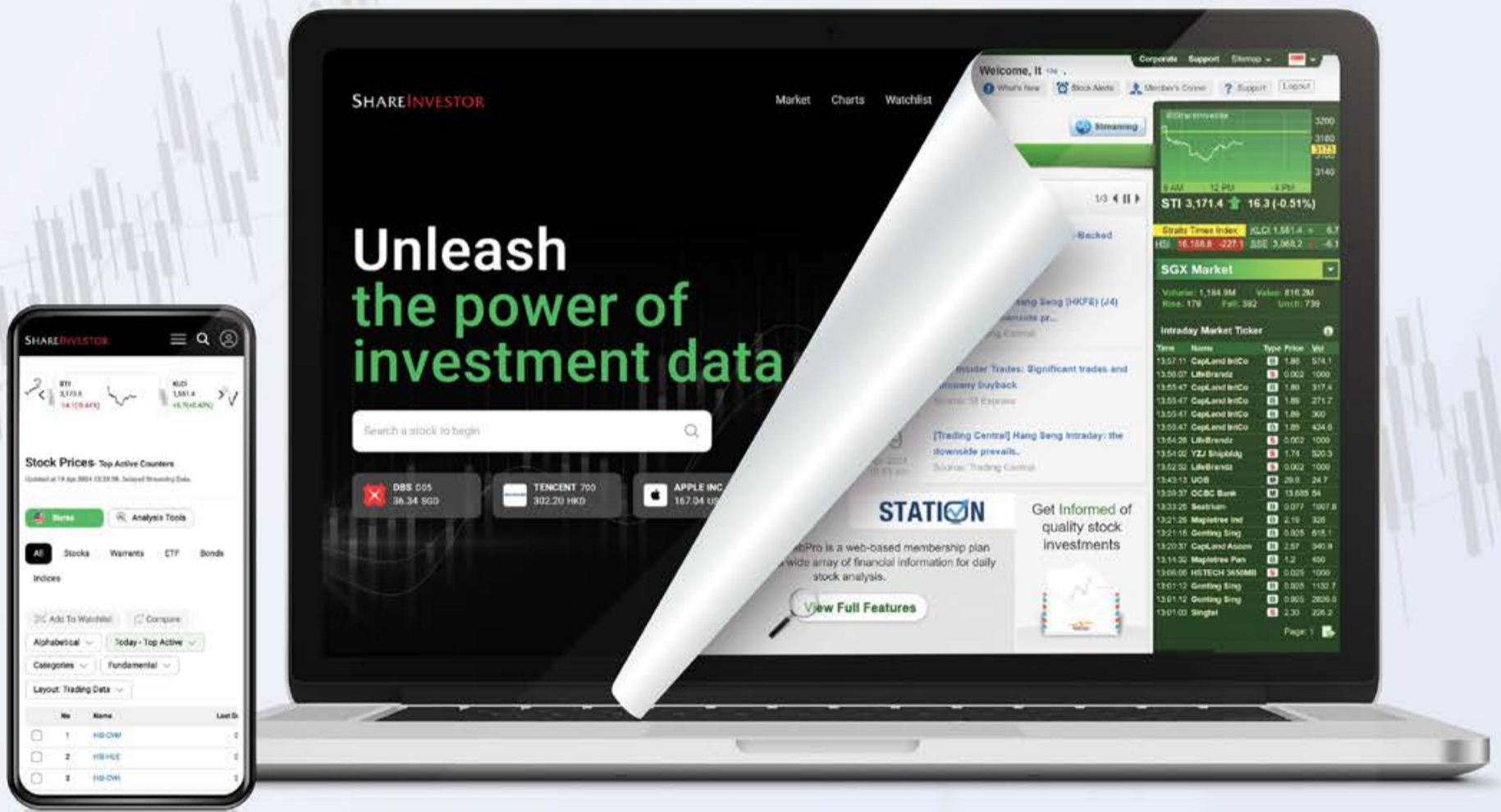
Period	Dividend Received	Capital Appreciation	Total Shareholder Return
Short Term Return	5 Days	+0.001	+3.33 %
	10 Days	-	-
	20 Days	-	-
Medium Term Return	3 Months	-0.003	-8.82 %
	6 Months	+0.004	+14.81 %
Long Term Return	1 Year	+0.012	+33.18 %
	2 Years	-	-
	3 Years	+0.009	+40.91 %
5 Years	+0.004	+14.81 %	
Annualised Return	Annualised	-	+9.80 %

# SHAREINVESTOR®

An AlphaInvest Company

# EXPERIENCE

## The New ShareInvestor Website



**Advanced  
Data  
Visualizations**



**Comprehensive  
Portfolio  
Feature**



**Enhanced  
Look &  
Feel**



**TRY ME  
NOW**





# Value Stocks

Price & Total Shareholder Return (as at yesterday)

**DEFINITION** Share price of a company trading at a lower price as compared to its fundamentals (FA) such as financial performance and dividend, allowing it to be attractive to value investors.

**CHART GUIDE** Total Shareholder Return (TSR) combines share price appreciation and dividend distributions paid to show the total return to the shareholder expressed as a percentage.



ShareInvestor WebPro > Screener > Market Screener (FA & TA) > select SGX > add criteria

**A. Criteria**

- > click Add Criteria
- Fundamental Analysis Conditions tab (i) Price Earnings Ratio
- Fundamental Analysis Conditions tab >select (ii) CAGR of Net Earnings
- Fundamental Analysis Conditions tab >select (iii) Net Debt To Equity
- Fundamental Analysis Conditions tab >select (iv) Return On Equity (ROE)

**B. Conditions**

1. Price Earnings Ratio – select (less than) type (15) times now
2. CAGR of Net Earnings – select (more than) type (10) % for the past type (3) financial year(s)
3. Net Debt To Equity – select (less than) type (1) for the past select (1) financial year(s)
4. Return On Equity (ROE) – select (more than) type (10) % for the past select (1) financial year(s)

- > click Save Template > Create New Template type (Value Stock) > click Create
- > click Save Template as > select Value Companies > click Save
- > click Screen Now (may take a few minutes)
- > Mouse over stock name > Factsheet > looking for Total Shareholder Return
- > Mouse over stock name > Charts > click C2 Charts tab



## CHASEN HOLDINGS LIMITED (5NV.SI)

ANALYSIS



Period	Dividend Received	Capital Appreciation	Total Shareholder Return
Short Term Return	5 Days	-0.001	-1.47%
	10 Days	-0.001	-1.47%
	20 Days	-0.001	-1.47%
Medium Term Return	3 Months	+0.001	+1.52%
	6 Months	-0.007	-9.46%
	1 Year	0.030	+38.57%
Long Term Return	2 Years	0.030	+234.48%
	3 Years	0.030	+80.29%
	5 Years	0.030	+148.72%
Annualised Return	Annualised	-	+19.99%



## MSM INTERNATIONAL LIMITED (5QR.SI)

ANALYSIS



Period	Dividend Received	Capital Appreciation	Total Shareholder Return	
Short Term Return	5 Days	-	-	
	10 Days	-	-	
	20 Days	-	+0.043	+46.74%
Medium Term Return	3 Months	-	+0.035	+35.00%
	6 Months	-	-0.006	-3.87%
	1 Year	-	-0.081	-31.12%
Long Term Return	2 Years	-	+0.027	+25.00%
	3 Years	-	+0.003	+2.27%
	5 Years	-	+0.022	+25.54%
Annualised Return	Annualised	-	+3.81%	



## THAKRAL CORPORATION LTD (AWI.SI)

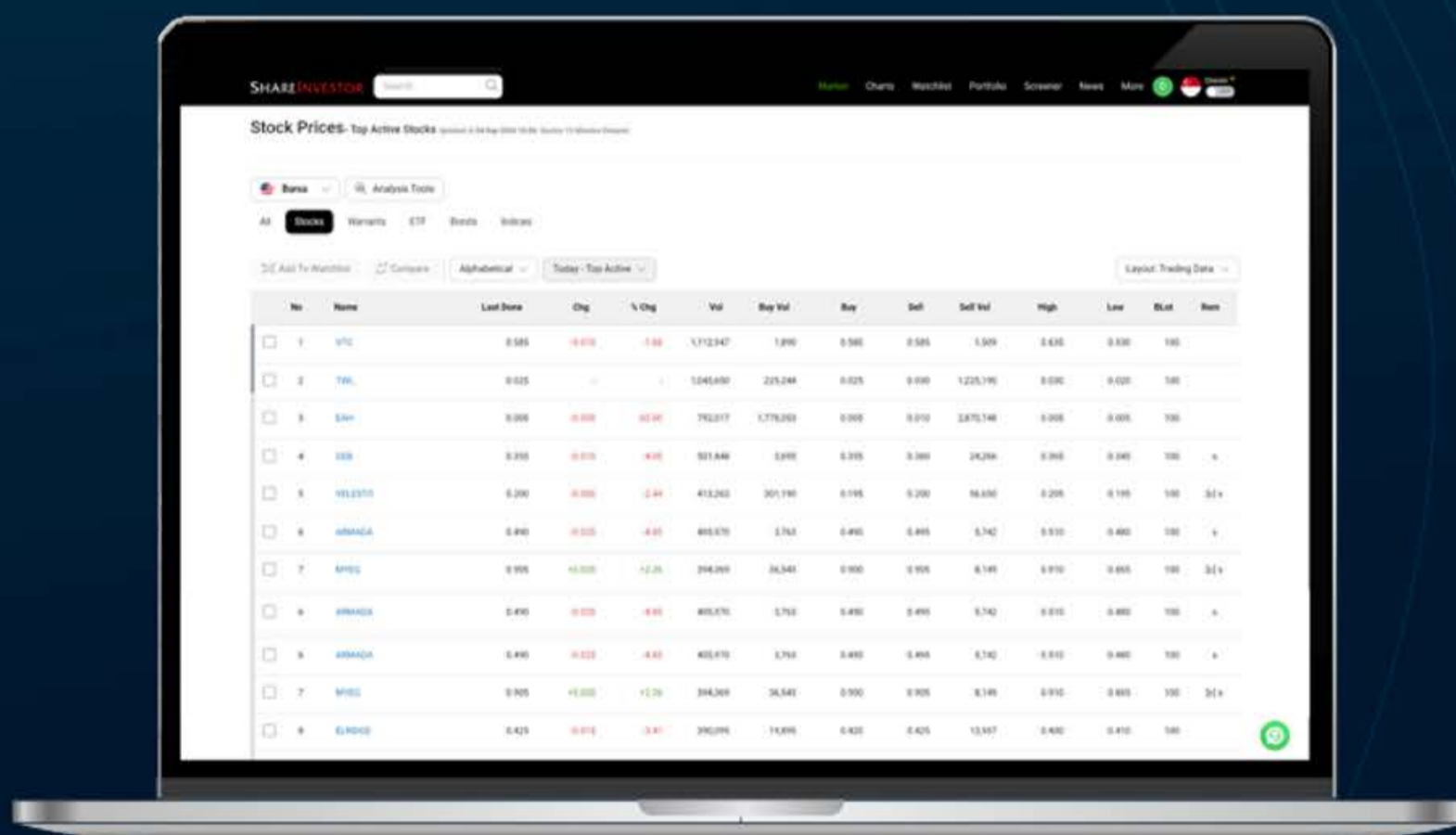
ANALYSIS



Period	Dividend Received	Capital Appreciation	Total Shareholder Return	
Short Term Return	5 Days	-	+0.500	+7.04%
	10 Days	-	+0.070	+8.83%
	20 Days	-	+0.140	+19.14%
Medium Term Return	3 Months	0.020	+0.040	+8.05%
	6 Months	0.020	+0.800	+113.89%
	1 Year	0.040	+0.870	+146.00%
Long Term Return	2 Years	0.080	+0.930	+171.10%
	3 Years	0.100	+0.925	+173.11%
	5 Years	0.100	+1.094	+306.23%
Annualised Return	Annualised	-	+31.97%	

**SHAREINVESTOR**<sup>®</sup>  
An AlphaInvest Company

# Navigating the **New** ShareInvestor A Step-by-Step Guide



Learn more about some of our new platform's exciting features and functions, including:

- ✓ The functionalities of ShareInvestor's Factsheet
- ✓ Key differences in the updated ShareInvestor Factsheet
- ✓ Case study on how to utilize the Factsheet effectively

[Click to Watch The Webinar](#)



## COMPANY SPOTLIGHT

# How to Identify and Better Trade Potential Small and Mid-Cap Stocks

Investor-One / Thu, Aug 21, 8:00 AM



In the often frantic world of small- and mid-cap investing, the true edge doesn't come from chasing the latest hype, it lies in disciplined screening, deep fundamental insight, and smart execution.

This article lays out a pragmatic framework for identifying mispriced gems in the SGX small/mid-cap universe and illustrates it with real examples of stocks that offer a mix of value, cash-rich balance sheets, and strategic positioning.

## 4-Step Framework for Identifying and Trading Small & Mid Caps

### 1. Cash-Rich & Low Ex-Cash Valuations

Look for companies whose net cash as a percentage of market cap is high - often this signals a value opportunity or even takeover



*continued...* [How to Identify and Better Trade Potential Small and Mid-Cap Stocks]

potential. Calculate an ex-cash P/E ratio to gauge whether the market is properly discounting its business.

## 2. Analyst Attention & Positive Ratings

Prioritize names featuring consistently in analyst screens and with favourable ratings. Coverage by multiple brokerages affords visibility and liquidity – 2 essential traits for better trading.

## 3. Operational Resilience & Dividends

Businesses with recurring cash flows, strong dividend yields, and defensive moats offer both income and downside protection. Observe dividend sustainability and management's commitment to capital returns.

## 4. Regulatory & Market Tailwinds

In markets like Singapore, macro actions - such as equity development programs or property cycles can lift relevant small/mid-caps. Stay alert to such catalysts.

# Quick Dive into 3 Singapore Stocks to Watch

## 1. China SunSine (SGX: QES)

One of Singapore's most-followed small caps, China SunSine stands out for its undervaluation and copious net cash.

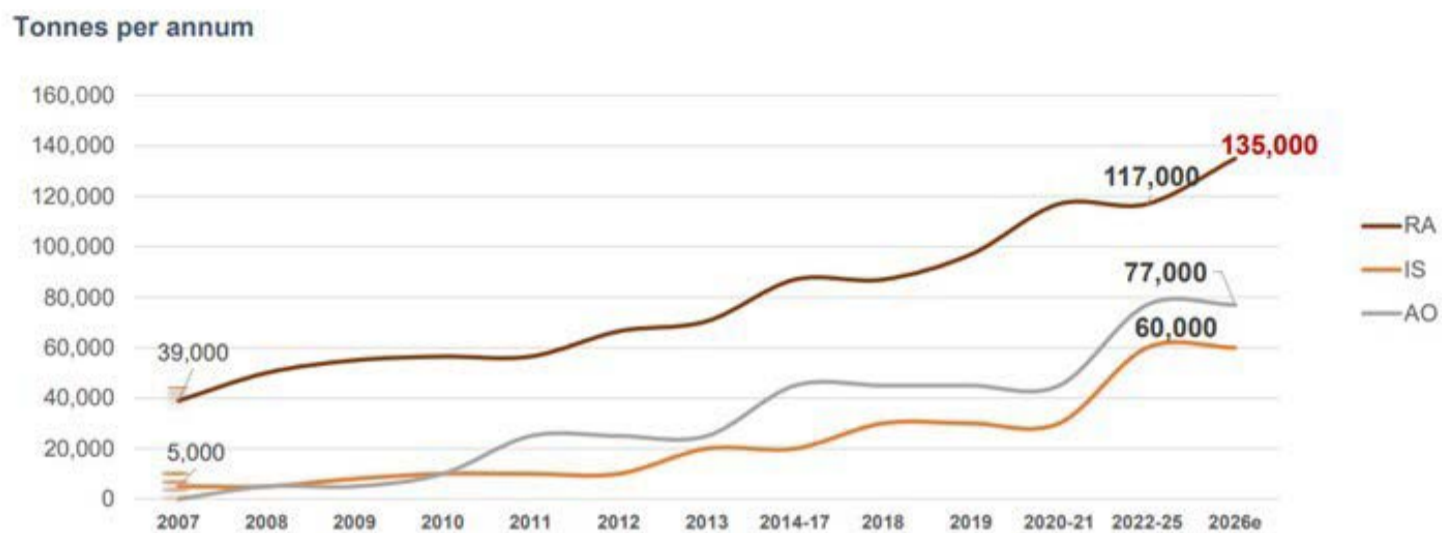
As of mid-2025, net cash formed roughly 71% of its market cap, and its ex-cash P/E trades at just 1.7x for 2025F with a healthy 5.3% dividend yield. Analysts have maintained bullish views and periodically raised target prices on the back of improving volumes and overseas sales growth.

From a valuation angle, the company's trailing P/E is under 9x, while it has delivered an impressive 79% return over the past year. The low P/E reflects conservative growth expectations despite strong fundamentals.

continued... [How to Identify and Better Trade Potential Small and Mid-Cap Stocks]

## Capacity Expansion History

25



Note: Annual capacity refers to the capacity by the end of each financial year, and is exclusive of the capacity of intermediary materials such as MBT and 4ADPA



- **Organic Capacity Expansion:** - to meet growing market demand and increase market share.
- **Innovative Production Methods:** - Adopted automated, continuous production processes to achieve green production (environmentally friendly practices) and enhance operational efficiency and reduce waste.
- **MBT Self-Sufficiency:** - Strengthened competitive advantage by cost savings and reduced reliance on external suppliers.

The chart above also illustrates a steady and significant expansion in production capacity over the years, driven by organic growth and innovation.

Rubber Accelerators (RA) capacity has grown from 39,000 tonnes per annum in 2007 to an estimated 135,000 tonnes by 2026, reflecting strong demand and market share gains. Insoluble Sulphur (IS) and Antioxidants (AO) have also seen notable increases, with projected capacities of 60,000 tonnes and 77,000 tonnes respectively by 2026.

This growth is underpinned by the adoption of automated, continuous production methods that promote environmentally friendly practices, enhance operational efficiency, and reduce waste.

Last but not least, achieving MBT self-sufficiency has strengthened the company's competitive edge by lowering costs and reducing reliance on external suppliers.

*continued...* [How to Identify and Better Trade Potential Small and Mid-Cap Stocks]

## 2. Valuetronics (SGX: BN2)

Valuetronics commands attention with a net cash-to-market-cap of about 60%, an ex-cash P/E of just 3.5x for 2025F, and a generous 6.3% dividend yield.

Multiple brokerages maintain positive ratings, supported by improving earnings momentum and a stable customer base.

On valuation metrics, forward P/E sits around 10.9x, and key fundamentals show a well-capitalized business - ROE above 11%, low leverage, and strong liquidity. Earnings momentum is picking up, with recent half-year results showing double-digit profit growth.

Earnings against Dividend



Source: Shareinvestor Pro

Based on the chart above, we can see that the company has always been paying out dividends close to 40 to 55% dividend payout ratio (inclusive of special dividends). Valuetronics is currently offering an attractive dividend yield of 5.9% trailing 12 months.

Its earnings per share (yellow bar) has also been trending up since FY2022 and if it continues on the current trend, the dividends will have a high likelihood to follow suit and reward shareholders as well.

## 3. PropNex (SGX: OYY)

PropNex delivered an explosive performance in the first half of 2025, posting its strongest results to date.

*continued... [How to Identify and Better Trade Potential Small and Mid-Cap Stocks]*

## MEDIA RELEASE

### PropNex doubles net profit to \$42.3 million in 1H2025; Proposes interim dividend of 5.0 cents

- Records strongest half-year performance and dividend in the Company's history
- Remains optimistic of a strong performance for FY2025, barring unforeseen events
- Increases salesforce to 13,618 as at 5 August 2025, the largest in Singapore

\$'000	1H2025	1H2024	% Change
Revenue	598,945	345,586	73.3
Gross Profit	66,174	33,441	97.9
Net Attributable Profit	42,256	19,001	122.4
EPS (cents)	5.71	2.57	122.4

Revenue soared 73.3% year-on-year to S\$598.9 million, while net profit more than doubled - up 133.8% to approximately S\$45.5 million.

Gross profit margin improved to 11.0%, supported by significant growth in project marketing and landed resale transactions. The company's operating cash flow also strengthened materially, underscoring its robust cash generation capabilities.

In tandem with this stellar earnings report, PropNex declared its highest-ever interim dividend of 5.0 cents per share, which equates to a yield of roughly 8.2% and a payout ratio exceeding 140%. Such a bold distribution signals strong confidence from management in both current earnings and future cash flow trajectories.

Strategically, PropNex continues to dominate Singapore's property agency landscape. It expanded its salesforce to over 13,600 active

*continued... [How to Identify and Better Trade Potential Small and Mid-Cap Stocks]*

agents across local and regional operations - solidifying its market leadership in both new project launches and resale segments.

Its market share in key new developments remains formidable, often exceeding 40%, and significantly outpacing nearest rivals.

Looking ahead, the macro backdrop remains supportive. Singapore's housing market is expected to see strong activity in 2025, with tens of thousands of new HDB and private housing units slated for launch over the next few years.

While regulatory changes or cooling measures could temper property transaction volumes, its resilient performance and proactive management of market momentum position PropNex as a standout small/mid-cap thematic play amid Singapore's cyclical real estate growth.

## Conclusion

Identifying and trading small- and mid-cap stocks requires more than just conviction - it demands a structured framework and deep understanding of each business' context.

In Singapore's equity landscape, names like China Sunline, Valuetronics, and PropNex illustrate how to blend value, dividend income, analyst insight, and growth prospects for smarter trades.

---

**Disclaimer:** *This article is for informational purposes only and not intended as investment advice.*

---



SHAREINVESTOR®  
An AlphaInvest Company

Ultimate Guide to use  
**ShareInvestor**

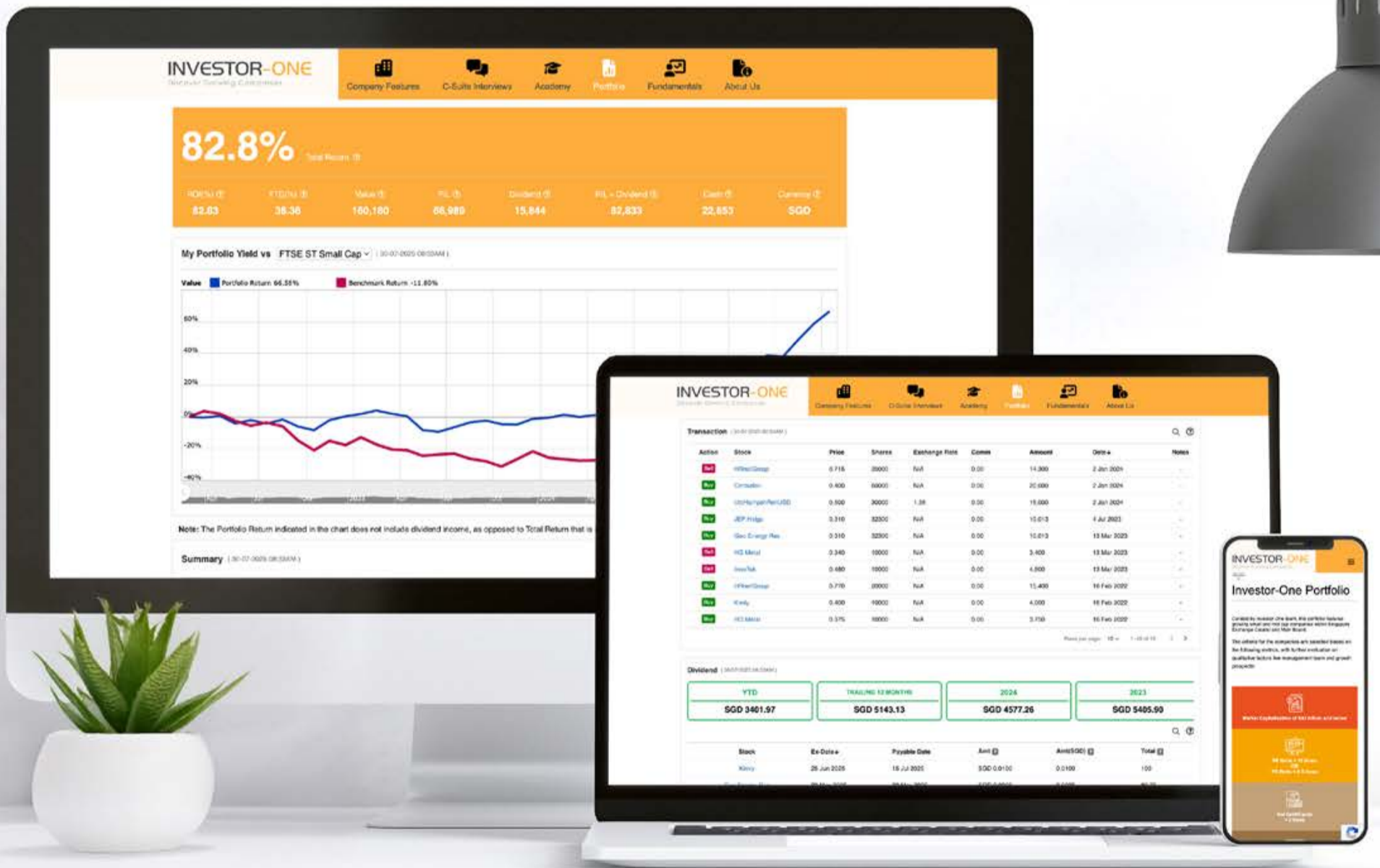
Watch now!

The banner features a dark blue background with a grid of white dots. On the left, the ShareInvestor logo is displayed. In the center, a green circular button with a red hand icon says 'Watch now!'. To the right, there is a computer monitor showing a website interface, surrounded by various icons: a yellow heart, a gold coin, a yellow smiley face, and a pie chart.

# INVESTOR-ONE PORTFOLIO

Curated and managed by the Investor-One team under ShareInvestor, this **free-to-access** portfolio will feature local small and mid-cap companies within Singapore Exchange's Mainboard and Catalyst.

Join us on the journey and watch as we manage a locally vested portfolio with a **fund of \$100,000**.



ENTER PORTFOLIO 

# Investor-One Portfolio

(As at yesterday)

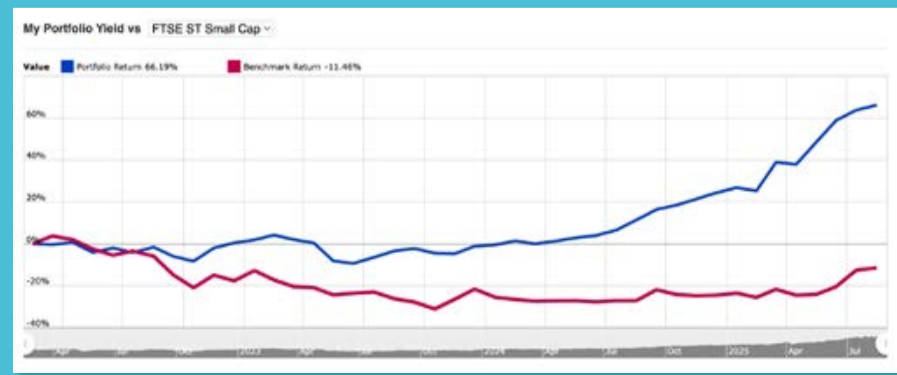
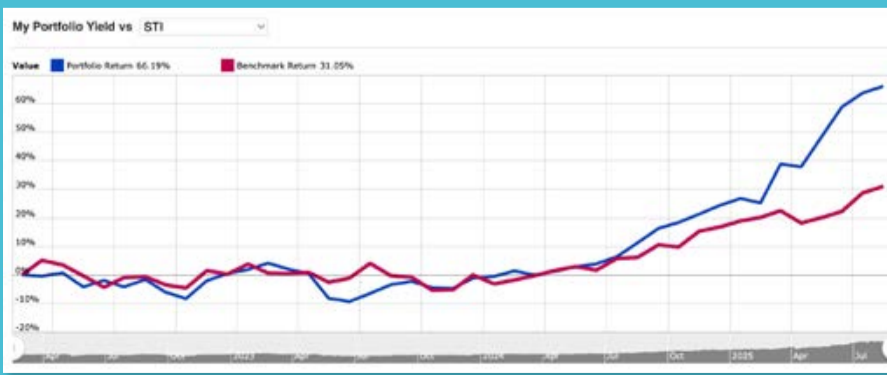
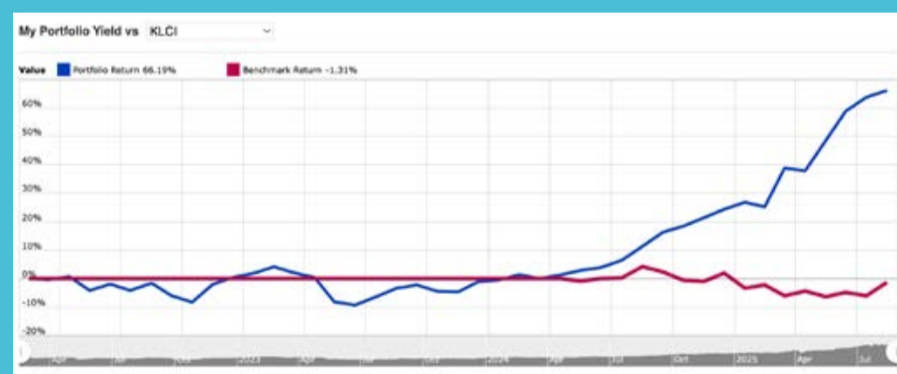
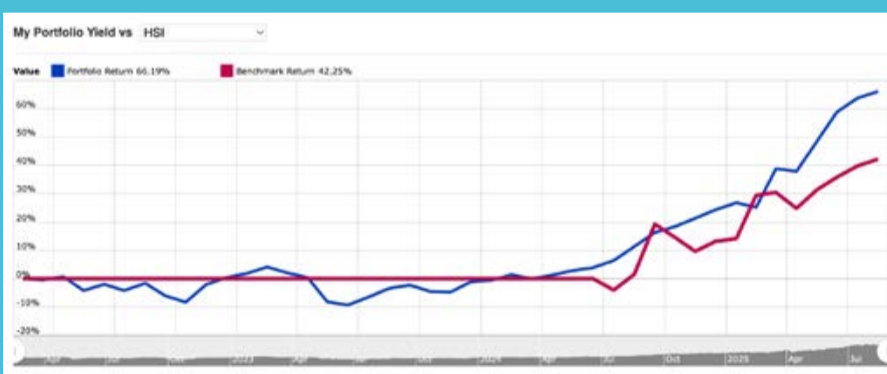
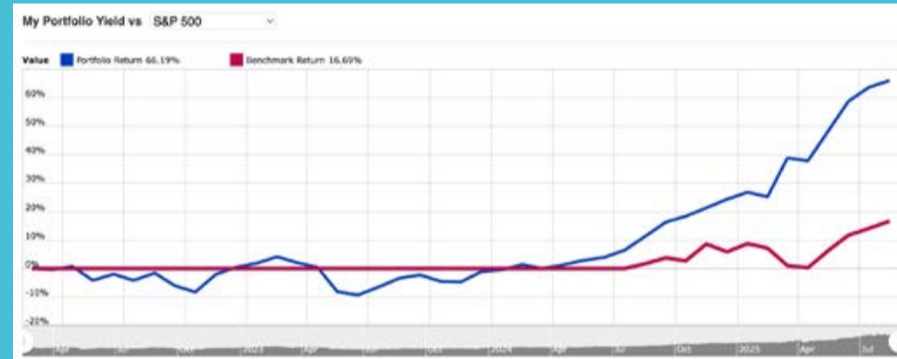
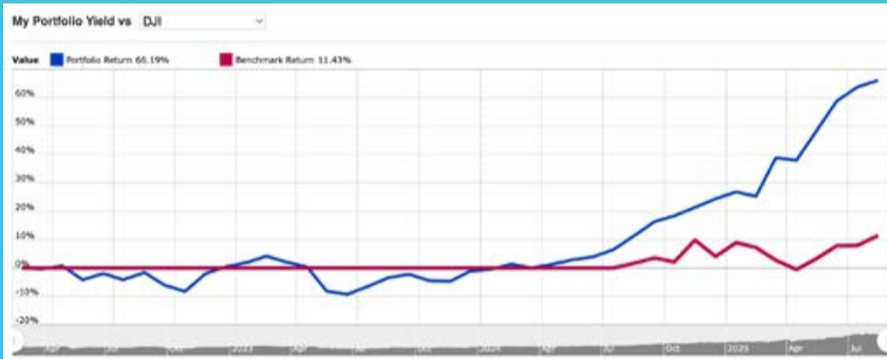
Curated by Investor-One team, this portfolio features growing small and mid cap companies within Singapore Exchange Catalist and Main Board.

The criteria for the companies are selected based on the following metrics, with further evaluation on qualitative factors like management team and growth prospects:

 <p><b>Market Capitalisation of S\$3 billion and below</b></p>	 <p><b>PE Ratio &lt; 15 times OR PB Ratio &lt; 0.5 times</b></p>
 <p><b>Net Debt/Equity &lt; 2 times</b></p>	 <p><b>Positive Free Cash Flow</b></p>

**83.3%** Total Return

YTD(%)	Value	P/L	Dividend	P/L + Dividend	Cash	Currency
38.77	159,753	66,562	16,765	83,326	23,574	SGD



Note: The Portfolio Return indicated in the chart does not include dividend income, as opposed to Total Return that is inclusive of Dividend Income.

continued on next page...

# INVESTOR-ONE

Discover Growing Companies

## Summary

[Open Positions](#)

Unrealized P/L ↑ 70,562

Name↑	Weightage	Entry	Last	Chg	Share	P/L	Div	P/L + Div	Cost	Value
Centurion	55.71%	0.4	1.78	-0.02 (-1.11%)	50000	69,000 (345.00%)	2,500	71,500	20,000	89,000
Geo Energy Res	7.18%	0.31	0.355	-0.025 (-6.58%)	32300	1,454 (14.52%)	2,374	3,828	10,013	11,467
Hock Lian Seng	5.26%	0.29	0.42	0.005 (1.20%)	20000	2,600 (44.83%)	1,110	3,710	5,800	8,400
Hyphens Pharma	10.33%	0.3	0.33	-	50000	1,500 (10.00%)	3,870	5,370	15,000	16,500
JEP Hldgs	5.05%	0.31	0.25	-	32300	-1,938 (-19.35%)	-	-1,938	10,013	8,075
Kimly	2.25%	0.4	0.36	-	10000	-400 (-10.00%)	636	236	4,000	3,600
Nordic	2.50%	0.395	0.4	-	10000	50 (1.27%)	700	750	3,950	4,000
+ UtdHampshReitUSD	11.71%	0.681	0.485	-	30000	-1,704 (-8.35%)	3,201	1,497	20,415	18,711

## Summary

[Closed Positions](#)

Realized Profit ↓ -4,000

Name↑	Avg Buy	Avg Sell	Shares	Comm	P/L	P/L + Div	Proceeds
HG Metal	0.375	0.34	10000	-	-350	50	3,400
HRnetGroup	0.77	0.715	20000	-	-1,100	674	14,300
InnoTek	0.735	0.48	10000	-	-2,550	-2,350	4,800

## Transaction

Action	Stock	Price	Shares	Exchange Rate	Comm	Amount	Date↓	Notes
<span style="color: red;">Sell</span>	HRnetGroup	0.715	20000	N/A	0.00	14,300	2 Jan 2024	-
<span style="color: green;">Buy</span>	Centurion	0.400	50000	N/A	0.00	20,000	2 Jan 2024	-
<span style="color: green;">Buy</span>	UtdHampshReitUSD	0.500	30000	1.36	0.00	15,000	2 Jan 2024	-
<span style="color: green;">Buy</span>	JEP Hldgs	0.310	32300	N/A	0.00	10,013	4 Jul 2023	-
<span style="color: green;">Buy</span>	Geo Energy Res	0.310	32300	N/A	0.00	10,013	13 Mar 2023	-
<span style="color: red;">Sell</span>	HG Metal	0.340	10000	N/A	0.00	3,400	13 Mar 2023	-
<span style="color: red;">Sell</span>	InnoTek	0.480	10000	N/A	0.00	4,800	13 Mar 2023	-
<span style="color: green;">Buy</span>	HRnetGroup	0.770	20000	N/A	0.00	15,400	16 Feb 2022	-
<span style="color: green;">Buy</span>	Kimly	0.400	10000	N/A	0.00	4,000	16 Feb 2022	-
<span style="color: green;">Buy</span>	HG Metal	0.375	10000	N/A	0.00	3,750	16 Feb 2022	-
<span style="color: green;">Buy</span>	InnoTek	0.735	10000	N/A	0.00	7,350	16 Feb 2022	-
<span style="color: green;">Buy</span>	Nordic	0.395	10000	N/A	0.00	3,950	16 Feb 2022	-
<span style="color: green;">Buy</span>	Hyphens Pharma	0.300	50000	N/A	0.00	15,000	16 Feb 2022	-
<span style="color: green;">Buy</span>	Hock Lian Seng	0.290	20000	N/A	0.00	5,800	16 Feb 2022	-
<span style="color: orange;">Cash</span>	Deposit	-	-	N/A	-	100,000	15 Feb 2022	-

continued on next page...

## Dividend

YTD	TRAILING 12 MONTHS	2024	2023
SGD 4323.40	SGD 5138.00	SGD 4576.02	SGD 5405.90

Stock	Ex-Date	Payable Date	Amt	Amt(SGD)	Total
Centurion	04 Sep 2025	25 Sep 2025	SGD 0.0200	0.0200	1000
Geo Energy Res	20 Aug 2025	29 Aug 2025	SGD 0.0010	0.0010	32.30
UtdHampshReitUSD	20 Aug 2025	26 Sep 2025	SGD 0.0123	0.0158	474.90
UtdHampshReitUSD	20 Aug 2025	26 Sep 2025	SGD 0.0086	0.0111	332.05
Nordic	19 Aug 2025	04 Sep 2025	SGD 0.0083	0.0083	82.80
Kimly	25 Jun 2025	15 Jul 2025	SGD 0.0100	0.0100	100
Geo Energy Res	20 May 2025	30 May 2025	SGD 0.0025	0.0025	80.75
Nordic	07 May 2025	19 May 2025	SGD 0.0090	0.0090	89.90
Hyphens Pharma	06 May 2025	23 May 2025	SGD 0.0150	0.0150	750
Geo Energy Res	06 May 2025	16 May 2025	SGD 0.0040	0.0040	129.20
Centurion	06 May 2025	26 May 2025	SGD 0.0200	0.0200	1000
Hock Lian Seng	04 May 2025	16 May 2025	SGD 0.0180	0.0180	360
UtdHampshReitUSD	25 Feb 2025	28 Mar 2025	SGD 0.0076	0.0098	293.44
UtdHampshReitUSD	25 Feb 2025	28 Mar 2025	SGD 0.0129	0.0166	498.07
Kimly	03 Feb 2025	14 Feb 2025	SGD 0.0100	0.0100	100
Geo Energy Res	15 Dec 2024	08 Jan 2025	SGD 0.0020	0.0020	64.60
Centurion	05 Sep 2024	30 Sep 2024	SGD 0.0150	0.0150	750
Geo Energy Res	20 Aug 2024	29 Aug 2024	SGD 0.0020	0.0020	64.60
UtdHampshReitUSD	20 Aug 2024	27 Sep 2024	SGD 0.0133	0.0171	513.51
UtdHampshReitUSD	20 Aug 2024	27 Sep 2024	SGD 0.0068	0.0088	262.55
Nordic	19 Aug 2024	04 Sep 2024	SGD 0.0085	0.0085	85.30
Kimly	26 Jun 2024	15 Jul 2024	SGD 0.0100	0.0100	100
Geo Energy Res	22 May 2024	31 May 2024	SGD 0.0020	0.0020	64.60
Centurion	08 May 2024	31 May 2024	SGD 0.0150	0.0150	750
Geo Energy Res	08 May 2024	17 May 2024	SGD 0.0060	0.0060	193.80
Nordic	07 May 2024	17 May 2024	SGD 0.0059	0.0059	58.80
Hyphens Pharma	07 May 2024	24 May 2024	SGD 0.0086	0.0086	430
Hock Lian Seng	05 May 2024	17 May 2024	SGD 0.0150	0.0150	300
UtdHampshReitUSD	28 Feb 2024	28 Mar 2024	SGD 0.0132	0.0170	509.65
UtdHampshReitUSD	28 Feb 2024	28 Mar 2024	SGD 0.0082	0.0106	316.60
Kimly	29 Jan 2024	09 Feb 2024	SGD 0.0112	0.0112	112
Geo Energy Res	20 Nov 2023	29 Nov 2023	SGD 0.0040	0.0040	129.20
HRnetGroup	30 Aug 2023	11 Sep 2023	SGD 0.0187	0.0187	374
Geo Energy Res	28 Aug 2023	06 Sep 2023	SGD 0.0050	0.0050	161.50
Nordic	17 Aug 2023	04 Sep 2023	SGD 0.0100	0.0100	100.10
Hyphens Pharma	16 Aug 2023	31 Aug 2023	SGD 0.0360	0.0360	1800
Kimly	27 Jun 2023	14 Jul 2023	SGD 0.0056	0.0056	56
Geo Energy Res	29 May 2023	08 Jun 2023	SGD 0.0050	0.0050	161.50
Hyphens Pharma	09 May 2023	24 May 2023	SGD 0.0111	0.0111	555
Geo Energy Res	08 May 2023	17 May 2023	SGD 0.0400	0.0400	1292
Nordic	07 May 2023	17 May 2023	SGD 0.0091	0.0091	90.60
Hock Lian Seng	07 May 2023	19 May 2023	SGD 0.0100	0.0100	200
HRnetGroup	03 May 2023	12 May 2023	SGD 0.0187	0.0187	374
Kimly	26 Jan 2023	08 Feb 2023	SGD 0.0112	0.0112	112
HRnetGroup	28 Aug 2022	06 Sep 2022	SGD 0.0213	0.0213	426
Nordic	16 Aug 2022	02 Sep 2022	SGD 0.0116	0.0116	116.20
Kimly	29 Jun 2022	15 Jul 2022	SGD 0.0056	0.0056	56
Hyphens Pharma	11 May 2022	25 May 2022	SGD 0.0067	0.0067	335
InnoTek	10 May 2022	25 May 2022	SGD 0.0200	0.0200	200
HRnetGroup	08 May 2022	18 May 2022	SGD 0.0300	0.0300	600
Hock Lian Seng	08 May 2022	20 May 2022	SGD 0.0125	0.0125	250
HG Metal	05 May 2022	20 May 2022	SGD 0.0400	0.0400	400
Nordic	05 May 2022	17 May 2022	SGD 0.0061	0.0061	60.80
Nordic	05 May 2022	17 May 2022	SGD 0.0015	0.0015	15.20

**This portfolio is managed by Investor-One research team, under ShareInvestor.**

**Disclaimer:** 1. The Investor-One portfolio is aggregated for educational and illustration purposes only. It is curated based on fixed financial parameters as indicated above. The investor-one team select their stocks solely base on the these fixed parameters. The featured companies are for information only and does not constitute investment advice. 2. The investor-one team is not licensed by any financial authority in Singapore. You should consult your Trading Representative or Financial Advisors before making any financial decisions. 3. Current Price, current value and gain/loss (%) under current portfolio are based on 10 minutes delayed data. 4. Purchase Price and Exit Price are based on EOD price. 5. The views and opinions expressed does not necessarily reflect those of ShareInvestor Pte Ltd nor any related companies of ShareInvestor Pte Ltd.

# SIGN UP FOR Invest NOW

# IT'S FREE!

**INVESTOR ACADEMY** provides a weekly tutorial on Investor Education. **COMPANY SPOTLIGHT** gives you valuable insights into small and mid-cap companies with great potential. **SIGN UP** for Investor Education Events.



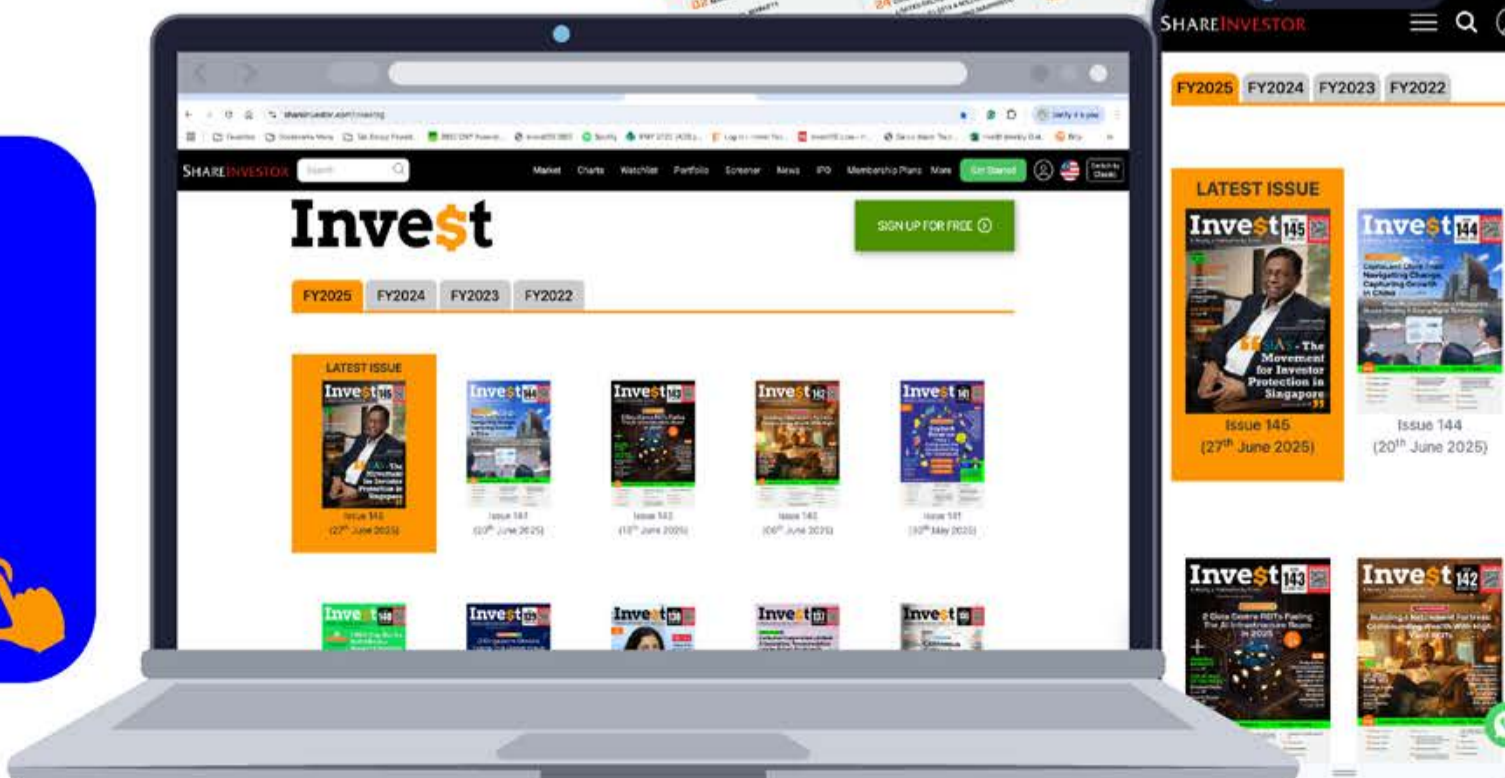
- Regular columns include
- Market At A Glance**
- Regional Markets**
- Top Dividend / Growth / Value Stocks**
- Investor-One Portfolio**
- Top Significant Insider Activity**
- Investment Books On sale**
- Investor Relations PLC Announcements**



Scan or click me

Via email, weekly

**Click Here**



Model image designed by Freepik

COMPANY SPOTLIGHT 

# BBR Holdings Delivers S\$114.4 Million Revenue in 1H2025, with Growing Project Pipeline

Investor-One / Tue, Aug 19, 12:00 PM



In a market where construction margins are tight and economic headwinds persist, BBR Holdings (S) Ltd (“BBR” or the “Group”) is quietly proving that resilience pays off.

The Group delivered a resilient performance for the six-month period ended 30 June 2025 (“1H2025”), supported by a diversified business portfolio and a growing order book. Revenue rose to S\$114.4 million, underpinned by strong contributions from its General Construction, Specialised Engineering, and Accommodation business segments.

The accommodation business contributed S\$18.3 million in recurring revenue during 1H2025, providing a stable, reliable income

*continued... [BBR Holdings Delivers S\$114.4 Million Revenue in 1H2025, with Growing Project Pipeline]*

stream that complements BBR's core construction operations. This segment enhances earnings visibility and supports medium-term growth, reinforcing the Group's diversified business model.



*Photo provided by BBR*

## **Construction: Building for the Next Cycle**

BBR's general construction and specialised engineering businesses remain the backbone of the Group. In 1H2025, the Group secured approximately S\$220 million in new contracts, including Housing and Development Board residential and community works, bored piling works, and a major infrastructure project in eastern Singapore.

These wins expand the Group's construction order book to about S\$400 million as at 30 June 2025, offering visibility well into FY2026, reflecting BBR's market competitiveness and reputation for timely project execution.

*continued... [BBR Holdings Delivers S\$114.4 Million Revenue in 1H2025, with Growing Project Pipeline]*



*Photo provided by BBR*

## Reading the Market

The macroeconomic environment remains uneven. While Singapore's GDP is projected to grow between 1.5% and 2.5% in 2025, inflationary pressures in manpower and materials persist, and global trade continues to adjust to new geopolitical realities. The construction sector remains resilient, expanding 6.0% year-on-year in Q2 2025, but margins across the industry are tight.

The Building and Construction Authority projects total construction demand to reach S\$47 billion to S\$53 billion in 2025. While cost pressures from manpower and materials persist, BBR's diversified business model, disciplined cost management, and strong forward order book provide a firm foundation for navigating these challenges.

*continued...* [BBR Holdings Delivers S\$114.4 Million Revenue in 1H2025, with Growing Project Pipeline]

## Charting a Path Forward

With a robust project pipeline, recurring rental income from its accommodation business, and a measured approach to property development, BBR continues to balance resilience with growth. The Group's focus remains on disciplined cost control, timely project execution, and prudent capital allocation, positioning it to deliver sustainable value to shareholders over the medium term.

BBR's story in 1H2025 is not one of chasing short-term spikes, but of laying firm foundations.

**Disclaimer:** *This article is for informational purposes only and not intended as investment advice.*



SHAREINVESTOR®  
An AlphaInvest Company

## Navigating the **New** ShareInvestor A Step-by-Step Guide

Click to Watch The Webinar 




SHAREINVESTOR®  
An AlphaInvest Company

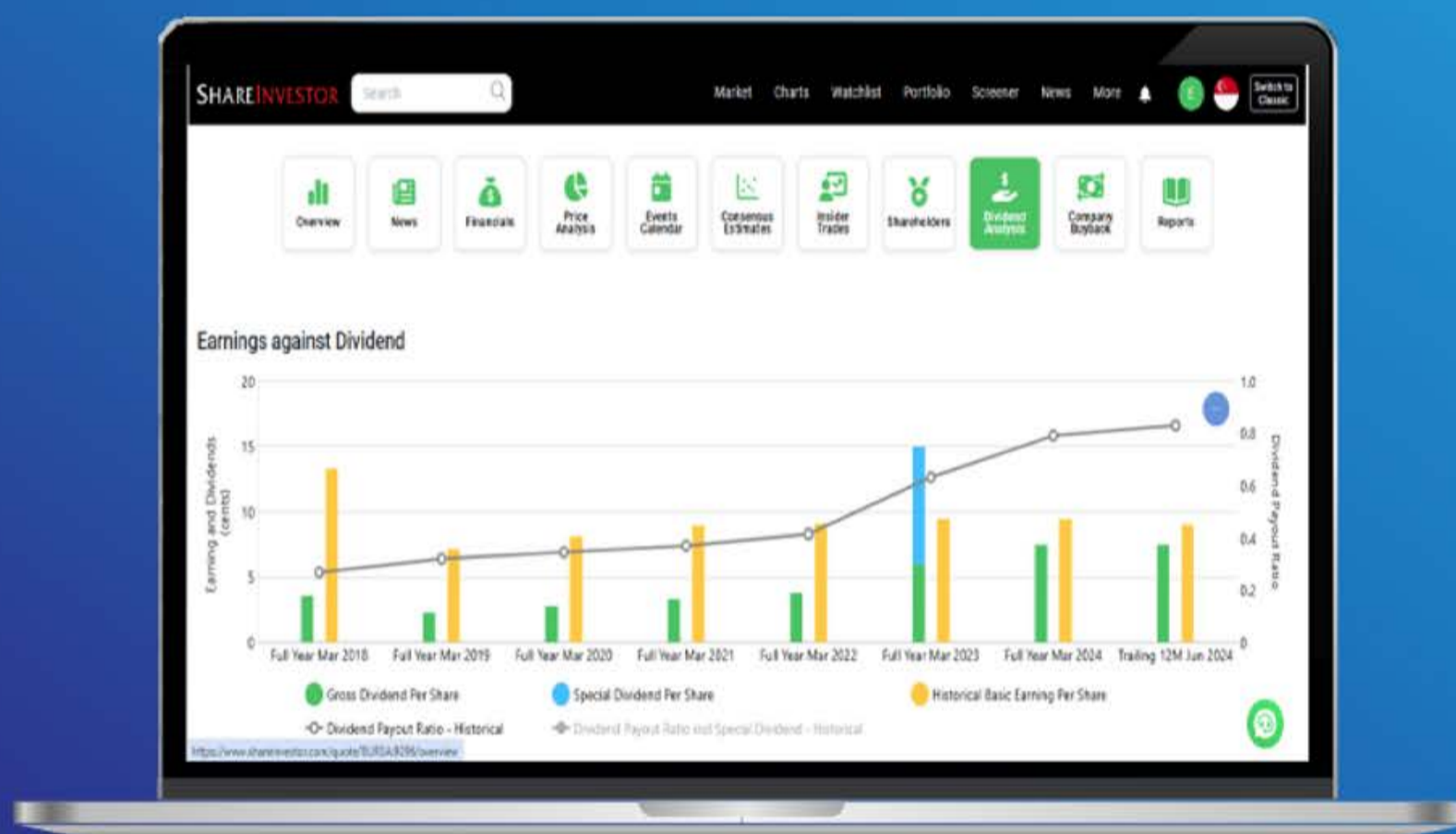
## Unlock Powerful REITs Insights

with ShareInvestor's New REITs Metrics Data & Screener

\*Note: REITs Metrics Data and Screener are Only Available on ShareInvestor's New Platform.

**Click to Access** 

# Tired of low returns? Let's talk high-paying Dividends!



- ✓ **Top Dividend Picks Right Now**
- ✓ **Insider Tips** – Advanced strategies for experienced investors
- ✓ **Easy-to-Follow Tutorial**

Get the most out of dividends, use our Dividend Analysis function –  
Click to Watch Our Tutorial Below!

**Upgrade Your Dividend Strategy Here**



COMPANY SPOTLIGHT 

# Q & M Dental Group Reports 10% Increase in Profit After Tax for Core Dental Business to S\$13.7 Million in 1H2025, Strengthened by War Chest of S\$130 Million.

Investor-One / Thu, Aug 21, 10:00 AM



As dental care becomes an increasingly essential part of personal health, rising awareness, higher disposable incomes, and growing demand for quality services are reshaping the market.

**Q & M Dental Group Limited** (“Q & M”), a Mainboard-listed company on the SGX-ST, is building on a solid operational base, an expanding regional network, and a strong financial position to accelerate its next phase of growth.

For the six months ended 30 June 2025 (“1H2025”), Q & M recorded revenue of S\$88.4 million. Core dental business revenue



*continued... [Q & M Dental Group Reports 10% Increase in Profit After Tax for Core Dental Business to S\$13.7 Million in 1H2025, Strengthened by War Chest of S\$130 Million]*

increased by S\$3.0 million or 4% to S\$87.2 million, mainly due to the consolidation of Aoxin Q & M from an equity-accounted associate to a subsidiary of the Group, higher revenue contribution from the Group's equipment & supplies distribution companies in Singapore and Malaysia offset by marginally lower revenue contribution from Singapore dental clinics.

Other business revenue decreased by 74% from S\$4.6 million in 1H2024 to S\$1.2 million in 1H2025. The decrease of S\$3.4 million was mainly due to the cessation of the Group's medical laboratory in September 2024 due to the expiry of the clinical laboratory service licence, as well as the closure of certain non-performing clinics. Despite the decline in revenue from other businesses, the core dental segment has remained the primary growth driver, generating consistent and predictable earnings.

Profit after tax (PAT) for the core dental business posted a 10% jump to S\$13.7 million, highlighting operational strength, while profit attributable to owners (PATMI) excluding other gains and losses rose 5% to S\$8.3 million. The Group remains committed to rewarding shareholders, as reflected in the first interim dividend of 0.4 cent per share, payable on 4 September 2025.

Overall, the Group reported net other losses of S\$4.4 million in 1H2025, mainly due to the consolidation of Aoxin Q & M and EM2AI from equity-accounted associates to subsidiaries of the Group.

In 1H2025, the Group generated net cash flow from operating activities of S\$15.0 million. This was mainly derived from the profit generated from operations in 1H2025, offset by a decrease in trade and other payables and income taxes paid. As at 30 June 2025, the Group has cash and cash equivalents of S\$47.1 million, compared S\$34.3 million as at 31 December 2024, mainly due to the consolidation of Aoxin Q & M's cash and cash equivalents.

**continued...** [Q & M Dental Group Reports 10% Increase in Profit After Tax for Core Dental Business to S\$13.7 Million in 1H2025, Strengthened by War Chest of S\$130 Million]



Photo by Q & M Dental

***Dr Ng Chin Siau, Group Chief Executive Officer of Q & M, said, "The first half of 2025 presented significant challenges, with the nation facing various economic headwinds. Despite these difficulties, our core dental business remained resilient, driven by our dual approach of organic growth and strategic acquisitions as part of our local expansion plan.***

***I am also pleased to highlight the successful issuance of S\$130 million in 3.95% Notes, which received an overwhelmingly positive response from both professional and investor communities. This strong support serves as a testament to the credibility and reputation that Q & M has built over the years. With this additional 'war chest' of capital, Q & M is now fully 're-fueled' and ready to embark on the next phase of its growth journey."***

## **S\$130 Million in Growth Fuel**

Recently, Q & M successfully raised S\$130.0 million through 3.95% notes under its Multicurrency Debt Issuance Programme, reflecting strong investor confidence. The proceeds will fund clinic expansion, strategic acquisitions, and the enhancement of its equipment and supplies distribution capabilities across Singapore and regional markets.

*continued... [Q & M Dental Group Reports 10% Increase in Profit After Tax for Core Dental Business to S\$13.7 Million in 1H2025, Strengthened by War Chest of S\$130 Million]*

## Regional Expansion Strategy

In Singapore, Q & M is enhancing clinic performance and strengthening its talent pipeline, with its dental college playing a central role in developing clinical capacity.

In Malaysia, the Group is preparing to capture growing cross-border demand ahead of the Johor–Singapore Rapid Transit System (RTS) launch in December 2026, leveraging its trusted brand to retain Singaporean patients while attracting local clients through a lean network of high-performing outlets.

In China, Q & M is taking a measured approach, evaluating expansion opportunities in a consolidating market with long-term growth potential.



Photo by Q & M Dental

## Q & M's Long-Term Vision

As of 30 June 2025, the Group operates 108 dental outlets, 5 medical clinics, a dental college, and a dental equipment and supplies distribution company in Singapore. In Malaysia, it manages 37 dental outlets along with a dental equipment and supplies distribution company. In the People's Republic of China ("PRC"), the

*continued... [Q & M Dental Group Reports 10% Increase in Profit After Tax for Core Dental Business to S\$13.7 Million in 1H2025, Strengthened by War Chest of S\$130 Million]*

Group runs 7 dental polyclinics, 7 dental hospitals, a dental training centre, a dental equipment and supplies distribution company, and a dental laboratory.

While the consolidation of Aoxin Q & M as a subsidiary has temporarily impacted overall profits, the acquisition strengthens Q & M's regional presence. It is expected to support sustainable growth and reinforce the Group's ability to deliver consistent, high-quality dental care across its expanding network, while fostering collaboration, sharing of expertise, and the development of talent across the region.

## Q & M's Growth Outlook

Q & M's strategy balances near-term earnings stability with medium- to long-term growth initiatives, providing shareholders with both resilience and upside potential. With a strong financial position, an expanding regional presence, and technological capabilities, Q & M is well-positioned to enhance shareholder value and solidify its position as a leading dental healthcare brand.

For investors, Q & M's trajectory is defined not just by resilience in challenging markets but by its ambition to lead through innovation, regional diversification, and disciplined execution.

**Disclaimer:** *This article is for informational purposes only and not intended as investment advice.*

## SIGN UP FOR Invest NOW IT'S FREE!

**INVESTOR ACADEMY** provides a weekly tutorial on Investor Education. **COMPANY SPOTLIGHT** gives you valuable insights into small and mid-cap companies with great potential. **SIGN UP** for Investor Education Events.

Regular columns include **Market At A Glance** • **Regional Markets** • **Top Dividend/Growth/Value Stocks** • **Investor-One Portfolio** • **Top Significant Insider Activity** • **Investment Books On sale** • **Investor Relations PLC Announcements**

Scan or click me



Via email, weekly

**Click Here** 



# TOP SIGNIFICANT INSIDER ACTIVITY

Data extracted from WebPro, accurate as at yesterday

Effective Change Date (Notice Date)	Stock Name	Buyer / Seller Name (Classification *)	Security Types <sup>b</sup>	Acquired / (Disposed) ['000]			Price	Closing Price <sup>d</sup>	No. of Shares After Trade ['000]			
				Direct	Deemed	Total			Direct	Deemed	Total	% Held <sup>e</sup>
27 Aug 2025 (27 Aug 2025)	Sasseur Reit	Xu Rongcan [Dir/CEO]	S/U		-622	-622	0.690		719,647	719,647		57.320
27 Aug 2025 (27 Aug 2025)	Sasseur Reit	Sasseur Asset Management Pte. Ltd. [Tm/Rp]	S/U	-622		-622	0.690	28,468		28,468		2.267
27 Aug 2025 (27 Aug 2025)	Sasseur Reit	Yang Xue [Dir/CEO]	S/U		-622	-622	0.690	11,133	708,514	719,647		57.320
26 Aug 2025 (27 Aug 2025)	Sasseur Reit	Xu Rongcan [Dir/CEO]	S/U		-209	-209	0.700		720,268	720,268		57.370
26 Aug 2025 (27 Aug 2025)	Sasseur Reit	Sasseur Asset Management Pte. Ltd. [Tm/Rp]	S/U	-209		-209	0.700	29,090		29,090		2.317
26 Aug 2025 (27 Aug 2025)	Sasseur Reit	Yang Xue [Dir/CEO]	S/U		-209	-209	0.700	11,133	709,135	720,268		57.370
27 Aug 2025 (27 Aug 2025)	Q&M Dental	Dr. Ng Chin Siau [Dir/CEO]	S/U		761	761	0.485	6,629	511,273	517,902		54.900
27 Aug 2025 (27 Aug 2025)	Q&M Dental	Quan Min Holdings Pte. Ltd. [SSH]	S/U	761		761	0.485	511,152		511,152		54.190
27 Aug 2025 (27 Aug 2025)	Metech Intl	CAO SHIXUAN [SSH]	S/U	13,455		13,455	0.031	13,455	27,197	40,651		20.220
25 Aug 2025 (27 Aug 2025)	DBS	TAN SU SHAN [Dir/CEO]	R/O/W	0.804		0.804	50.330					
27 May 2025 (27 Aug 2025)	DBS	TAN SU SHAN [Dir/CEO]	R/O/W	-0.9		-0.9	44.530					
28 Mar 2025 (27 Aug 2025)	DBS	TAN SU SHAN [Dir/CEO]	R/O/W	-0.9		-0.9	46.470					
27 Aug 2025 (27 Aug 2025)	Totm Tech	KHOO THOMAS CLIVE [SSH]	S/U	12,296		12,296	0.028	0.028	226,355		226,355	15.090
27 Aug 2025 (27 Aug 2025)	Singtel	Wee Siew Kim [Dir/CEO]	S/U,R/O/W	21		21	4.300	555	0	555		0.003
27 Aug 2025 (27 Aug 2025)	Singtel	Yong Ying-I [Dir/CEO]	S/U,R/O/W	22		22	4.300	332		332		0.002
27 Aug 2025 (27 Aug 2025)	Singtel	Yong Hsin Yue [Dir/CEO]	S/U,R/O/W	21		21	4.300	23		23		0.000
27 Aug 2025 (27 Aug 2025)	Singtel	Lee Theng Kiat [Dir/CEO]	S/U,R/O/W	114		114	4.300	474		474		0.003
27 Aug 2025 (27 Aug 2025)	Singtel	Tan Tze Gay [Dir/CEO]	S/U,R/O/W	23		23	4.300	37	62	99		0.001
27 Aug 2025 (27 Aug 2025)	Singtel	Lim Swee Say [Dir/CEO]	S/U,R/O/W	20		20	4.300	22		22		0.000
27 Aug 2025 (27 Aug 2025)	LHT	DH Cornerstone Fund [SSH]	S/U		9,824	9,824	0.970	1.000		9,824	9,824	18.450
26 Aug 2025 (27 Aug 2025)	Stamford Land	Ow Chio Kiat [Dir/CEO]	S/U	50		50	0.420	0.420	626,367	59,645	686,012	46.239
25 Aug 2025 (27 Aug 2025)	Stamford Land	Ow Chio Kiat [Dir/CEO]	S/U	10		10	0.417	0.420	626,317	59,645	685,962	46.236
27 Aug 2025 (27 Aug 2025)	Food Empire	Saw Meng Tee [Dir/CEO]	S/U,R/O/W	30		30	2.370	150		150		0.030
27 Aug 2025 (27 Aug 2025)	LHT	YAP MUI KEE [Dir/CEO]	S/U	-9,824		-9,824	0.970	1.000				
22 Aug 2025 (27 Aug 2025)	IHH	EMPLOYEES PROVIDENT FUND BOARD [SSH]	S/U	-19		-19	2.050	992,343		992,343		11.230
30 Jul 2025 (27 Aug 2025)	Koh Bros	Koh Kheng How ("KKH") [SSH]	S/U	15,000		15,000	0.270	28,909		28,909		7.010
26 Aug 2025 (27 Aug 2025)	CNMC Goldmine	Lim Kuoh Yang [Dir/CEO]	S/U		-412	-412	0.640	0.645	20	107,677	107,697	26.575
30 Jul 2025 (27 Aug 2025)	Koh Bros	Koh Teak Huat ("KTH") [Dir/CEO]	S/U	-15,000		-15,000	0.270	20,713	325	21,038		5.100
26 Aug 2025 (27 Aug 2025)	CNMC Goldmine	Lin Xiang Xiong [Dir/CEO]	S/U		-412	-412	0.640	0.645	690	106,988	107,677	26.570
25 Aug 2025 (27 Aug 2025)	Metro	Ong Sek Hian (Wang ShiXian) [Dir/CEO]	S/U		124	124	0.470	63	295,299	295,362		35.671

**Disclaimer:** The information on this page is provided as a service to readers. It does not constitute financial advice and/or any investment recommendations. Past performance is not indicative of future results. We assume no liability for damages resulting from or arising out of the use of such information. It would be best if you did your own research to make your personal investment decisions wisely or consult a licenced investment advisor.



# Protect yourself with the ScamShield Suite



**ScamShield Helpline**  
Call to check if something is a scam



**ScamShield app**  
Check, detect and block scams



**scamshield.gov.sg**  
One-stop portal on scams



**ScamShield Alert social channels**  
Receive the latest information on scams



# IR Announcements

[SIGN UP FOR INVEST WEEKLY](#)

IR ANNOUNCEMENTS

## **Oiltek: Secures RM74.3 Million Worth Of New Contracts From Malaysia, Indonesia & Pakistan.**

Cumulative new contracts secured to date in FY2025 amounts to approximately RM136.2 million. With the new contracts, the Group's current order book of approximately RM398.2 million, will be fulfilled in the next 18-24 months barring any unforeseen circumstances.

[READ MORE](#)

## **Fraser's Hospitality Trust: RAM Ratings Affirms Ratings Of Fraser's Hospitality Trust-Sponsored Notes Series 2024-A.**

RAM Rating Services Berhad has affirmed its ratings for the RM502.48 million Medium Term Notes Series 2024-A issued by Notable Vision Sdn. Bhd. under its RM750 million Medium Term Note Programme.

[READ MORE](#)

## **Marco Polo Marine: Successfully Deploys First CSOV, Signals Positive Momentum Ahead.**

The Group reported 3QFY2025 revenue of S\$31.7 million, down 9% year-on-year from S\$34.9 million in 3QFY2024, which had been a strong comparative period. For the 9MFY2025 period, revenue declined by 13% to S\$84.4 million compared to S\$96.5 million in 9MFY2024. The decline in revenue was largely driven by lower revenue from shipyard operations and rechartering income from third-party vessels in Taiwan.

[READ MORE](#)

## **Global Invacom: Unveils Fully Modular Auto-Deploy XY Antenna For Multi-Orbit Mission Critical Applications.**

The XY antenna allows multi-orbit capability across Geostationary Earth Orbit Satellite, Low Earth Orbit, Medium Earth Orbit and High Earth Orbit. It can be switched between the high frequency Ka- and Ku-bands and can also be operated using outdoor or indoor control systems, depending on user requirements.

[READ MORE](#)

## **CapitaLand Ascendas REIT: To Divest 5 Properties In Singapore For S\$329 Million.**

CapitaLand Ascendas REIT is pleased to announce the proposed divestments of five industrial and logistics properties in Singapore to unrelated third parties for a total sale consideration of S\$329.0 million. The Properties are 31 Ubi Road 1, 9 Changi South Street 3, 10 Toh Guan Road and 19 & 21 Pandan Avenue, as well as 30 Tampines Industrial Avenue 3. The Sale Consideration represents a premium of approximately 6% over the total market valuation of the Properties of S\$311.3 million and a 20% premium to their total original purchase price of S\$274.2 million.

[READ MORE](#)

continued on next page...



# IR Announcements

## Sarine: Acquires A Minority Stake In Kitov.Ai.

The purpose of this investment is the diversification of Sarine's focus to additional industries, also considering the current challenges the diamond jewellery industry faces. Being a company engaged in technologies similar to those employed by Sarine, optical inspection, AI, software, etc., thus "speaking" the same language, Kitov.ai provides the Group with the means to diversify into new fields separate from the diamond industry. Kitov.ai has many industry-leading customers in many varied industries including aerospace, defense, electronics, medical devices, energy control, consumer products and others, in the U.S., Europe, the Far East and Israel.

[READ MORE](#)


## CapitaLand Investment: Astaka Launches RM1.2 Billion GDV Mixed-Use Development, Forms Strategic Partnership With CapitaLand Investment As Retail Advisor.

Astaka Holdings Limited has announced a RM1.2 billion Gross Development Value mixed-use development, with a lifestyle retail mall, next to its upcoming residential skyscraper, Arden @ One Bukit Senyum. It will also partner with CapitaLand Investment Limited to shape its retail strategy.

[READ MORE](#)

## APAC Realty: ERA Singapore Raises The Bar With Third Consecutive "Singapore's Best Customer Service 2025/2026" Award.

APAC Realty Limited is proud to announce that ERA Singapore has won The Straits Times' "Singapore's Best Customer Service 2025/2026" award for the third consecutive year, making it the only real estate agency to receive this prestigious recognition three times in a row. The Straits Times' "Singapore Best Customer Service" award is conferred through rigorous evaluations. Final rankings are based on two key components, likelihood of recommendation and five service criteria, accessibility, customer focus, quality of communication, professional competence, and range of services.

[READ MORE](#)


## Marco Polo Marine: Scores Double Win With Maiden S\$5 Million 4th Dry Dock Contract & 3-Year Ship Repair & Maintenance Agreement With Cyan Renewables.

Marco Polo Marine has successfully launched the Group's fourth dry dock and secured its inaugural ship repair contract. The contract for this project is valued at approximately S\$5 million. The designated vessel is scheduled to arrive at the yard by the end of August and will undergo repairs over an estimated period of two months. Separately, Marco Polo Marine's wholly owned subsidiary, Marco Polo Shipyard Pte Ltd, has secured a three-year Master Service Agreement with Cyan Offshore Asia Pte Ltd.

[READ MORE](#)

 SIGN UP FOR INVEST WEEKLY

# IR Announcements

IR ANNOUNCEMENTS

## KSH Holdings: Places Out Its Treasury Shares.

KSH Holdings Limited has successfully completed the sale of all 28,900,400 treasury shares held by the Group for cash consideration through a placement. Evolve Capital Advisory Private Limited and Maybank Securities Pte. Ltd. were the placement and sub-placement agent respectively. The Placement attracted prominent investors including ICH Capital Pte Ltd, GinkoAGT Global Growth Fund and Lion Global Investors Limited, as investment manager for and on behalf of its clients, as well as other corporate and individual investors.



[READ MORE !\[\]\(40ff4926cc4e80920dcd6e30a3ae173f\_img.jpg\)](#)



## LHN: Coliwoo Revamps Old Bukit Timah Fire Station Into Integrated Lifestyle Destination.

A one-of-a-kind co-living concept within a heritage fire station, Coliwoo Bukit Timah Fire Station is slated to launch in September 2025, bringing modern city dwellers closer to nature without compromising on comfort or connectivity. Beyond co-living, the mixed-use development will feature experiential retail, community-led events, and eco-conscious initiatives to engage members and the wider public. Strategically located by the Rail Corridor, Coliwoo Bukit Timah Fire Station offers an idyllic escape for families, students, expats, corporates, pet owners, and outdoor enthusiasts, just minutes away from the city.

[READ MORE !\[\]\(dc529689d361f44313a00e52199898c1\_img.jpg\)](#)

# SIGN UP FOR Invest NOW

**INVESTOR ACADEMY** provides a weekly tutorial on Investor Education. **COMPANY SPOTLIGHT** gives you valuable insights into small and mid-cap companies with great potential. **SIGN UP** for Investor Education Events.

Regular columns include **Market At A Glance** • **Regional Markets** • **Top Dividend/Growth/Value Stocks** • **Investor-One Portfolio** • **Top Significant Insider Activity** • **Investment Books On sale** • **Investor Relations PLC Announcements**

# IT'S FREE!



Scan or click me  **Click Here**   
Via email, weekly

Model image designed by Freepik



# Don't Miss These Must-Read Investment Gems!

CLICK ON BOOK FOR MORE DETAILS

