

Invest

A Weekly e-Publication by SHAREINVESTOR

Data and Investing Ideas

ISSUE
140
23 MAY 2025

Scan or click me



Via email, every Friday



COMPANY SPOTLIGHT

See more on pages **11-16**

3 Mid-Cap Stocks With Hidden Growth Catalysts

PLUS

Insiders Are Buying. Is It Time You Look At Venture Corporation Too?

See more on pages **28-34**

Analyst Alert: Recommendation And Consensus On SIA Engineering, ComfortDelGro Corporation, Lendlease Global Commercial REIT, UMS Integration

See more on pages **22-25**

Investor-One Portfolio

See more on pages **17-20**

IR Announcements

See more on pages **36-40**

HOT PICKS!
Investment
Books



On page **41**

02 MARKET AT A GLANCE

04 REGIONAL MARKETS

06 DIVIDEND STOCKS

08 GROWTH STOCKS

10 VALUE STOCKS

11 COMPANY SPOTLIGHT: 3 MID-CAP STOCKS WITH HIDDEN GROWTH CATALYSTS

17 INVESTOR-ONE PORTFOLIO

22 COMPANY SPOTLIGHT: ANALYST ALERT: RECOMMENDATION AND CONSENSUS ON SIA ENGINEERING, COMFORTDELGRO CORPORATION, LENDLEASE GLOBAL COMMERCIAL REIT, UMS INTEGRATION

27 INSIDER TRADES

28 COMPANY SPOTLIGHT: INSIDERS ARE BUYING. IS IT TIME YOU LOOK AT VENTURE CORPORATION TOO?

36 IR ANNOUNCEMENTS

41 INVESTMENT BOOKS

SHAREINVESTOR®

An AlphaInvest Company

Invest with Knowledge

MARKETING & SALES

SALES MANAGER

Nigel Lim

ADMIN

Gillian Ong

Dawn Ong

CONTENT

DIRECTOR

Edward Stanislaus

INVESTOR RELATIONS

GROUP MANAGING DIRECTOR

Edward Stanislaus

DIRECTOR

Zhao Yanjing

yanjing.zhao@shareinvestor.com

SENIOR MANAGER

Vivien Ong

vivien.ong@shareinvestor.com

SENIOR QC EXECUTIVE

Poh Lam Huat

lamhuat@shareinvestor.com

ALPHAINVEST HOLDINGS

BOARD OF DIRECTORS

CHAIRMAN

Patrick Daniel

GROUP CEO

Christopher Lee

GROUP COO

Lim Dau Hee

GROUP MD

Shanison Lin

SHAREINVESTOR PTE LTD

151 Lorong Chuan #04-07B

New Tech Park (Lobby G)

Singapore 556741

T (65) 6958 8000

F (65) 6958 8044

E admin@shareinvestor.com

W www.ShareInvestor.com

[Advertise with us](#)

Disclaimer:

The services information and data made available on or accessible via this newsletter including facts, views, advice, analyses, opinions and recommendations of individuals and organisations are for general information purposes only.

It is not intended as investment advice and must not be relied upon as such. ShareInvestor Pte Ltd and its third party information providers are not giving or purporting to give or representing or holding themselves out as giving financial, investment, tax, legal and other professional advice.

Advice from a securities professional is strongly advised.

Market at a Glance

Over 5 trading days as at yesterday

www.shareinvestor.com

market data at your fingertips



ShareInvestor WebPro (www.shareinvestor.com)

Prices > Stock Prices > SGX > click Stocks tab

1. mouse over **Ranking** > select **Top Active** > mouse over **Column Layout** > select **Edit Customs** > select **Name** > select **Volume** > select **Last Done Price** > mouse over **Column Layout** > select **Custom**
2. mouse over **Ranking** > select **Top Turnover** > mouse over **Column Layout** > select **Edit Customs** > select **Name** > select **Last Done Price** > select **Value** > mouse over **Column Layout** > select **Custom**
3. mouse over **Ranking** > select **Top Gainers (Over 5 Trading Days)** > mouse over

4. mouse over **Ranking** > select **Top Losers (Over 5 Trading Days)**
5. mouse over **Ranking** > select **Top % Gainers (Over 5 Trading Days)**
6. mouse over **Ranking** > select **Top % Losers (Over 5 Trading Days)**

Singapore Top Actives

(as at yesterday)

Name	Last Done	Volume
Singtel	3.950	52,284.5
HSI 20800MBePW250730	0.060	49,525.0
GHY Culture	0.170	42,031.0
HSI 25200MBeCW250627	0.048	40,800.5
ThaiBev	0.465	37,080.9
HSI 22200MBePW250627	0.066	37,028.6
HSI 25200MBeCW250730	0.094	33,335.0
Oceanus	0.005	29,094.2
Genting Sing	0.705	27,539.1
Memiontec Hldgs	0.015	26,971.9

Top Gainers

(over 5 Trading days as at yesterday)

Name	Last Done	5 Days Chg
NA20100F 500301	81.000	10.999
GLD US\$	305.700	7.510
GLD SG\$	394.210	7.120
NZ13100V 330901	101.000	1.000
NA21200W 511001	79.000	0.999
XT Vietnam US\$	27.910	0.910
Xiaomi 5xLongUB250930	4.150	0.850
XT MSINDO US\$	14.210	0.740
BYD HK SDR 10to1	7.530	0.660
BYD 5xLongSG251216	1.790	0.650

Top Losers

(over 5 Trading days as at yesterday)

Name	Last Done	5 Days Chg
SPDR S&P500 US\$	585.000	-3.800
JMH USD	44.960	-3.170
SPDR DJIA US\$	421.560	-2.720
Avarga	0.245	-2.105
BYD 5xShortUB260831	0.185	-0.625
AMZN 3xLongSG261006	3.660	-0.560
BYD 5xShortSG270331	0.220	-0.525
Alibaba HK SDR 5to1	3.930	-0.510
META 3xLongSG261006	3.150	-0.480
Baidu 5xLongSG261027	0.690	-0.470

Singapore Top Turnover

(as at yesterday)

Name	Last Done	Value
DBS	44.190	228,349,850
Singtel	3.950	206,171,589
UOB	35.270	114,540,641
OCBC Bank	16.140	88,744,441
SIA	7.080	69,466,325
CapLand IntCom T	2.070	53,198,147
ST Engineering	7.570	46,576,027
SGX	13.820	31,124,331
Seatrium Ltd	2.060	25,034,653
YZJ Shipbldg SGD	2.140	24,031,125

Top % Gainers

(over 5 Trading days as at yesterday)

Name	Last Done	5 Days % Chg
SingtelMBeCW250630	0.063	186.36
Camsing Hc^	0.100	143.90
Capital World	0.002	100.00
Galaxy 5xLongSG250626	0.004	100.00
Quantum Health	0.002	100.00
Parkson Retail	0.129	92.54
BYD 5xLongUB250930	0.380	90.00
NetEase 5xLongSG251216	0.156	77.27
NetEase 5xLongUB251128	0.145	76.83
Bromat	0.044	76.00

Top % Losers

(over 5 Trading days as at yesterday)

Name	Last Done	5 Days % Chg
Avarga	0.245	-89.57
NetEase 5xShortUB251128	0.002	-85.71
HSI 16000MBePW250627	0.004	-77.78
HSI 19400MBePW250529	0.002	-77.78
HSI 27200MBeCW250529	0.002	-77.78
BYD 5xShortUB260831	0.185	-77.16
BYD 5xShortSG270331	0.220	-70.47
HSTECH 4400MBePW250627	0.014	-67.44
JD 5xLongUB250930	0.001	-66.67
HSI 15600MBePW250730	0.007	-65.00

REITS SYMPOSIUM

by AlphaInvest

Venue: Suntec Convention Centre, Level 3, Summit 1 and 2
Date: 24 May 2025 Time: 9am - 5pm

Navigating the Future of REITs: Market Outlook, Interest Rates, and Global Investment Trends!

Hear from over 30 industry leaders and discover the market trends, opportunities and exciting new insights, starting with our Keynote Panel Discussion at REITs Pavilion!

KEYNOTE PANELLISTS:



CHAN KUM KONG
Managing Director,
Head of Research And
FinLit Equities

SGX GROUP



BENJAMIN GOH
Head of Research

SECURITIES INVESTORS
ASSOCIATION
SINGAPORE



CHRISTINE LI
Head of Research,
Asia Pacific

KNIGHT FRANK



DEREK TAN
Executive Director,
Team Lead, Property

DBS GROUP

FREE ACCESS TO ENGAGEMENT ZONE

[Click to Register](#)

Regional Markets

Over 5 trading days

ShareInvestor WebPro (www.shareinvestor.com)

1. Price > Stock prices
2. select Market: Bursa / HKEX / NYSE / NASDAQ (one bourse at a time)
3. select Stocks Tab
4. select Ranking Top Gainers or Top Losers (Over 5 Trading Days)
5. Mouse over Column Layout > select Edit Customs > select Last Done Price > select 5 Days Change > select 52 Weeks High > select 52 Weeks Low > Mouse Over Column Layout > select Custom

BURSA (RM)

Top Gainers

Name	Last Done	5 Days Change	52 Weeks High	52 Weeks Low
DLADY	30.100	0.800	38.720	26.400
HEIM	28.300	0.800	28.680	21.180
LPI	15.000	0.540	15.300	12.140
F&N	27.240	0.520	33.480	22.400
UTDPLT	22.880	0.400	23.718	15.395

Top Losers

Name	Last Done	5 Days Change	52 Weeks High	52 Weeks Low
NESTLE	80.000	-4.800	129.000	61.800
MPI	18.000	-3.320	41.020	13.300
PETDAG	19.040	-1.500	21.438	16.100
PPB	11.600	-0.740	15.080	10.340
KLK	19.620	-0.680	22.660	18.340

HONG KONG (HKD)

Top Gainers

Name	Last Done	5 Days Change	52 Weeks High	52 Weeks Low
LAOPU GOLD (6181)	844.000	160.000	881.000	60.950
SPDR GOLD TRT (2840)	2,404.000	81.000	2,504.000	1,659.500
MIXUE GROUP (2097)	535.500	77.700	544.500	256.000
A BOS USD MM (3196)	8,606.600	62.150	8,591.500	8,166.000
SPDR GOLD TRT-R (82840)	2,210.000	62.000	2,345.000	1,714.000

Top Losers

Name	Last Done	5 Days Change	52 Weeks High	52 Weeks Low
YUM CHINA (9987)	331.600	-32.200	421.400	225.200
TRIP.COM-S (9961)	485.200	-29.300	598.000	300.200
CAM 20 UST (3146)	703.000	-22.950	842.900	715.700
GUOFUHEE (2582)	118.000	-15.200	156.700	76.800
ZTO EXPRESS-W (2057)	133.800	-13.700	219.000	123.700

NYSE (USD)

Top Gainers

Name	Last Done	5 Days Change	52 Weeks High	52 Weeks Low
Berkshire Hathaway A	761,380.000	2,280.000	812,855.000	607,135.000
AutoZone	3,872.600	114.230	3,916.810	2,728.965
White Mountains Insurance Group	1,835.010	34.810	2,023.000	1,666.220
Dycom Industries	224.130	32.030	228.660	131.370
UnitedHealth Group	302.980	28.630	630.730	248.880

Top Losers

Name	Last Done	5 Days Change	52 Weeks High	52 Weeks Low
Fair Isaac	1,707.940	-472.500	2,402.515	1,266.720
NVR	7,078.090	-168.530	9,964.770	6,562.850
TX Pac Land	1,355.660	-61.440	1,769.140	578.560
HubSpot	621.250	-42.800	881.130	434.840
Markel Group	1,864.550	-35.780	2,063.680	1,491.030

NASDAQ (USD)

Top Gainers

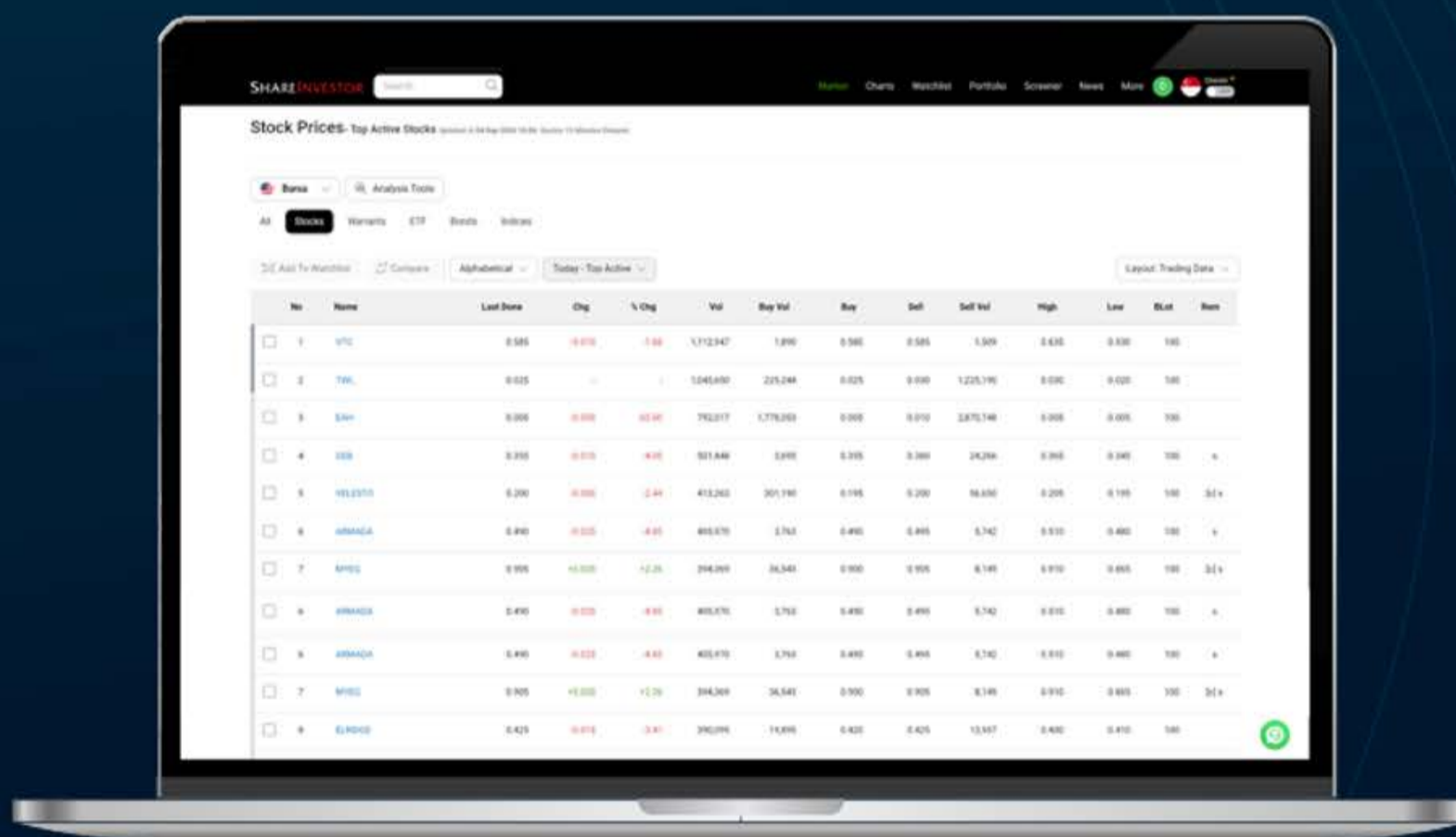
Name	Last Done	5 Days Change	52 Weeks High	52 Weeks Low
Booking Holdings	5,293.310	55.570	5,379.980	3,180.000
CoreWeave A	107.390	41.620	109.490	33.515
Daily Journal	430.360	24.310	602.000	359.339
argenx ADR	584.950	23.200	678.210	358.800
DeFi Development	35.530	22.674	37.590	7.646

Top Losers

Name	Last Done	5 Days Change	52 Weeks High	52 Weeks Low
First Citizens BancShares A	1,841.770	-124.780	2,412.930	1,473.620
Monolithic Power Systems	678.620	-31.700	959.640	438.860
Wix com	152.340	-30.570	247.110	137.940
KLA	778.940	-27.060	896.320	551.330
Coca-Cola Consolidated	1,137.970	-24.520	1,460.920	963.700

SHAREINVESTOR®
An AlphaInvest Company

Navigating the **New** ShareInvestor A Step-by-Step Guide



Learn more about some of our new platform's exciting features and functions, including:

- ✓ The functionalities of ShareInvestor's Factsheet
- ✓ Key differences in the updated ShareInvestor Factsheet
- ✓ Case study on how to utilize the Factsheet effectively

[Click to Watch The Webinar](#)



Dividend Stocks

Price & Total Shareholder Return (as at yesterday)



DEFINITION

Company is paying out dividend with low or moderate leverage.

CHART GUIDE

Total Shareholder Return (TSR) combines share price appreciation and distributions paid to show the total return to the shareholder expressed as a percentage.



ShareInvestor WebPro > Screener > Market Screener (FA & TA) > select SGX > add criteria

A. Criteria

- > click Add Criteria
- Fundamental Analysis Conditions tab >select (i) Dividend Yield
- Fundamental Analysis Conditions tab >select (ii) Dividend Payout (Historical)
- Fundamental Analysis Conditions tab >select (iii) Total Debt To Equity
- Fundamental Analysis Conditions tab >select (iv) Total Shareholder Returns

- Fundamental Analysis Conditions tab >select (v) Total Shareholder Returns
- Fundamental Analysis Conditions tab / >select (vi) CAGR of Dividend Per Share
- Fundamental Analysis Conditions tab >select (vii) CAGR of Dividend Per Share

B. Conditions (Criteria Filters)

1. Dividend Yield - select (more than) type (1) % for the past select (1) financial year(s)
2. Dividend Payout (Historical) - select (between) type (0.5) to type (1) times for the past select (1) financial year(s)
3. Total Debt to Equity - select (less than) type (1) for the past select (1) financial year(s)
4. Total Shareholder Return - select (more than) type (5) % for the past select (3) financial year(s)
5. Total Shareholder Return - select (more than) type (5) % for the past select (5) financial year(s)

6. CAGR of Dividend Per Share - select (less than) type (30) % for the past select (5) financial year(s)
 7. CAGR of Dividend Per Share - select (more than) type (1) % for the past select (5) financial year(s)
- > click Save Template > Create New Template type (Dividend Companies) > click Create
 - > click Save Template as > select Dividend Companies > click Save
 - > click Screen Now (may take a few minutes)
 - > Sort By: Select (Dividend Yield) Select (Desc)
 - > Mouse over stock name > Factsheet > looking for Total Shareholder Return



BUMITAMA AGRI LTD. (P8Z.SI)

ANALYSIS



Period	Dividend Received	Capital Appreciation	Total Shareholder Return
Short Term Return	5 Days	-0.010	-1.32 %
	10 Days	-0.005	-0.67 %
	20 Days	0.054	-0.76 %
Medium Term Return	3 Months	0.054	-3.73 %
	6 Months	0.054	-6.00 %
	1 Year	0.066	+15.86 %
Long Term Return	2 Years	0.134	+58.38 %
	3 Years	0.212	+28.63 %
	5 Years	0.274	+151.60 %
Annualised Return	Annualised	-	+20.27 %



TAT SENG PACKAGING GROUP LTD (T12.SI)

ANALYSIS

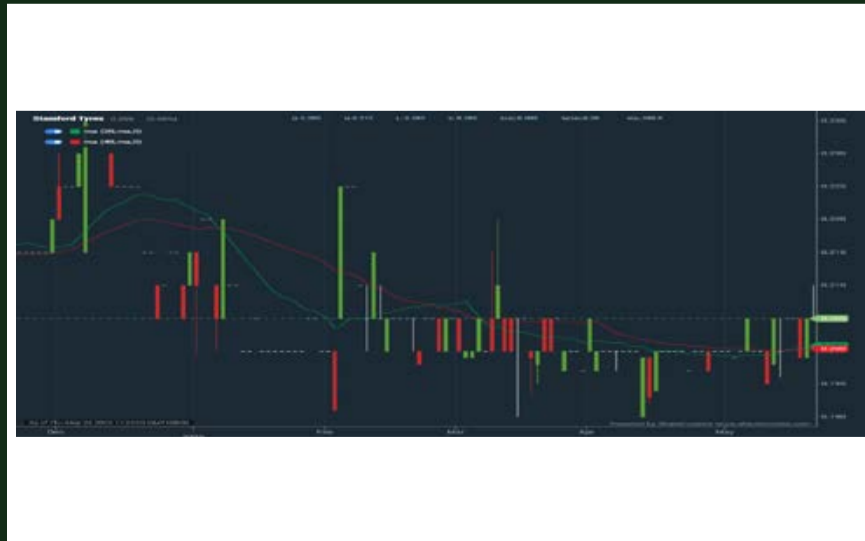


Period	Dividend Received	Capital Appreciation	Total Shareholder Return
Short Term Return	5 Days	-0.020	-1.18 %
	10 Days	-0.005	-2.99 %
	20 Days	0.030	+4.88 %
Medium Term Return	3 Months	+0.050	+10.26 %
	6 Months	+0.060	+11.69 %
	1 Year	0.060	+24.48 %
Long Term Return	2 Years	0.105	+34.53 %
	3 Years	0.145	+36.42 %
	5 Years	0.225	+148.82 %
Annualised Return	Annualised	-	+20.00 %



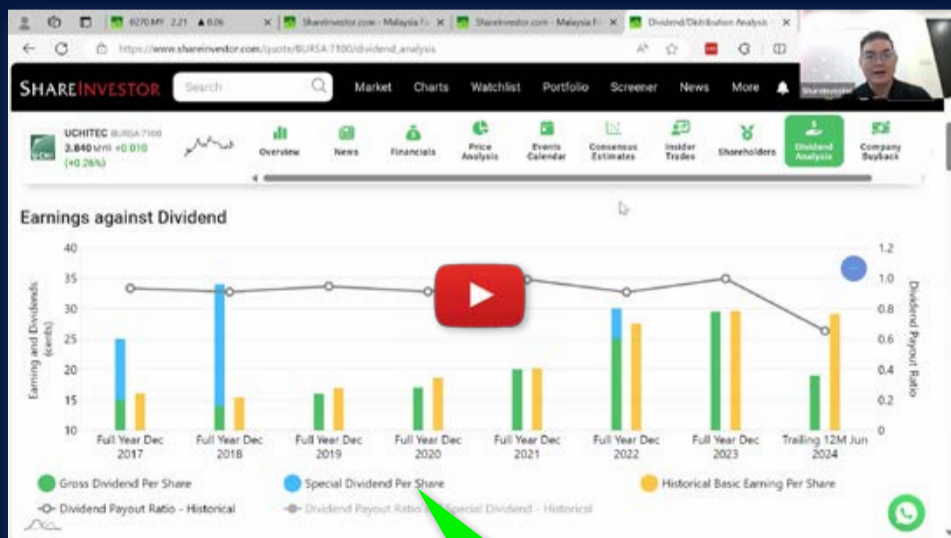
STAMFORD TYRES CORPORATION LTD (S29.SI)

ANALYSIS



Period	Dividend Received	Capital Appreciation	Total Shareholder Return	
Short Term Return	5 Days	-	-	
	10 Days	-	-	
	20 Days	-	+0.005	+4.06 %
Medium Term Return	3 Months	-	-	
	6 Months	-	-0.010	-4.65 %
	1 Year	0.020	+0.010	+20.32 %
Long Term Return	2 Years	0.035	+0.013	+26.00 %
	3 Years	0.050	+0.034	+49.12 %
	5 Years	0.065	+0.021	+48.37 %
Annualised Return	Annualised	-	+8.21 %	

Ultimate Guide to use ShareInvestor



YOU WILL LEARN HOW TO USE:

- Company Financials
- Market Screener
- Company Insider Trades
- Dividend Analysis
- Consensus Estimation
and more...

**Watch
now!**

DEFINITION Company revenue is growing and making good quality of earnings with positive Free Cash Flow.

CHART GUIDE Total Shareholder Return (TSR) combines share price appreciation and distributions paid to show the total return to the shareholder expressed as a percentage.



ShareInvestor WebPro > Screener > Market Screener (FA & TA) > select SGX > add criteria

A. Criteria

1. Fundamental Analysis Conditions tab >select (i) Free Cash Flow, (ii) Revenue Growth, (iii) Gross Profit (Earnings) Margin, (iv) Quality of Earnings, (v) Total Shareholder Returns, > click Add Criteria
2. Fundamental Analysis Conditions tab >select (vi) Total Shareholder Returns > click Add Criteria

B. Conditions (Criteria Filters)

1. Free Cash Flow – select (more than) type (1) for the past select (1) financial year(s)
 2. Revenue Growth – select (more than) type (1) for the past select (1) financial year(s)
 3. Gross Profit (Earnings) Margin - select (more than) type (30) % for the past select (1) financial year(s)
 4. Quality of Earnings – select (more than) type (1) for the past select (1) financial year(s)
 5. Total Shareholder Return – select (more than) type (5) % for the past select (3) financial year(s)
 6. Total Shareholder Return – select (more than) type (5) % for the past select (5) financial year(s)
- > click Save Template > Create New Template type (Growth Companies) > click Create

- > click Save Template as > select Growth Companies > click Save
- > click Screen Now (may take a few minutes)
- > Sort By: Select (Revenue Growth) Select (Desc)
- > Mouse over stock name > Factsheet > looking for Total Shareholder Return



BENG KUANG MARINE LIMITED (BEZ.SI)

ANALYSIS



Period	Dividend Received	Capital Appreciation	Total Shareholder Return	
Short Term Return	5 Days	-	-0.006	-3.23 %
	10 Days	0.006	-0.012	-3.12 %
	20 Days	0.006	-0.018	-6.06 %
Medium Term Return	3 Months	0.006	-0.080	-26.46 %
	6 Months	0.006	-0.045	-17.33 %
	1 Year	0.006	-0.015	+12.73 %
Long Term Return	2 Years	0.006	-0.092	+111.36 %
	3 Years	0.006	+0.120	+210.00 %
	5 Years	0.006	+0.112	+173.53 %
Annualised Return	Annualised	-	-	+22.29 %



ZIXIN GROUP HOLDINGS LIMITED (42W.SI)

ANALYSIS

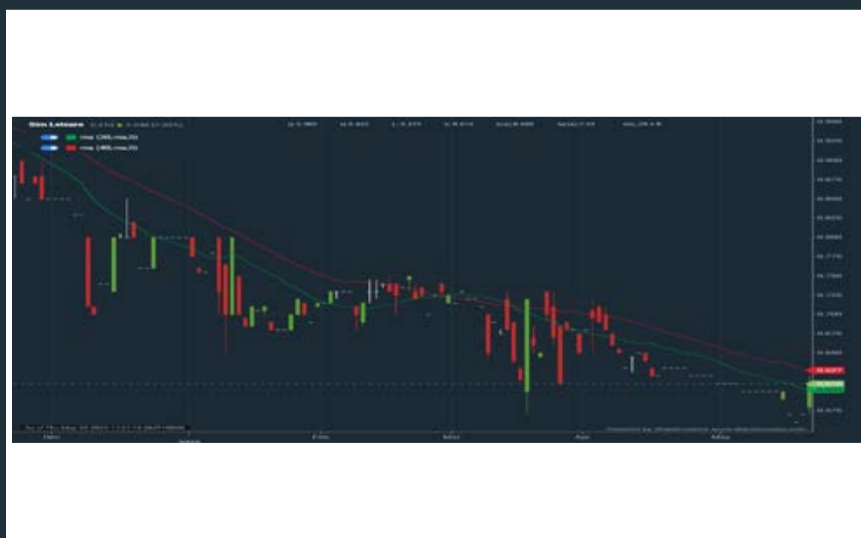


Period	Dividend Received	Capital Appreciation	Total Shareholder Return	
Short Term Return	5 Days	-	+0.002	+6.45 %
	10 Days	-	+0.005	+17.86 %
	20 Days	-	+0.005	+17.86 %
Medium Term Return	3 Months	-	+0.005	+17.86 %
	6 Months	-	+0.004	+13.79 %
	1 Year	-	+0.013	+65.09 %
Long Term Return	2 Years	-	+0.014	+73.68 %
	3 Years	-	+0.010	+43.48 %
	5 Years	-	+0.010	+43.48 %
Annualised Return	Annualised	-	-	+7.49 %



SIM LEISURE GROUP LTD. (URR.SI)

ANALYSIS



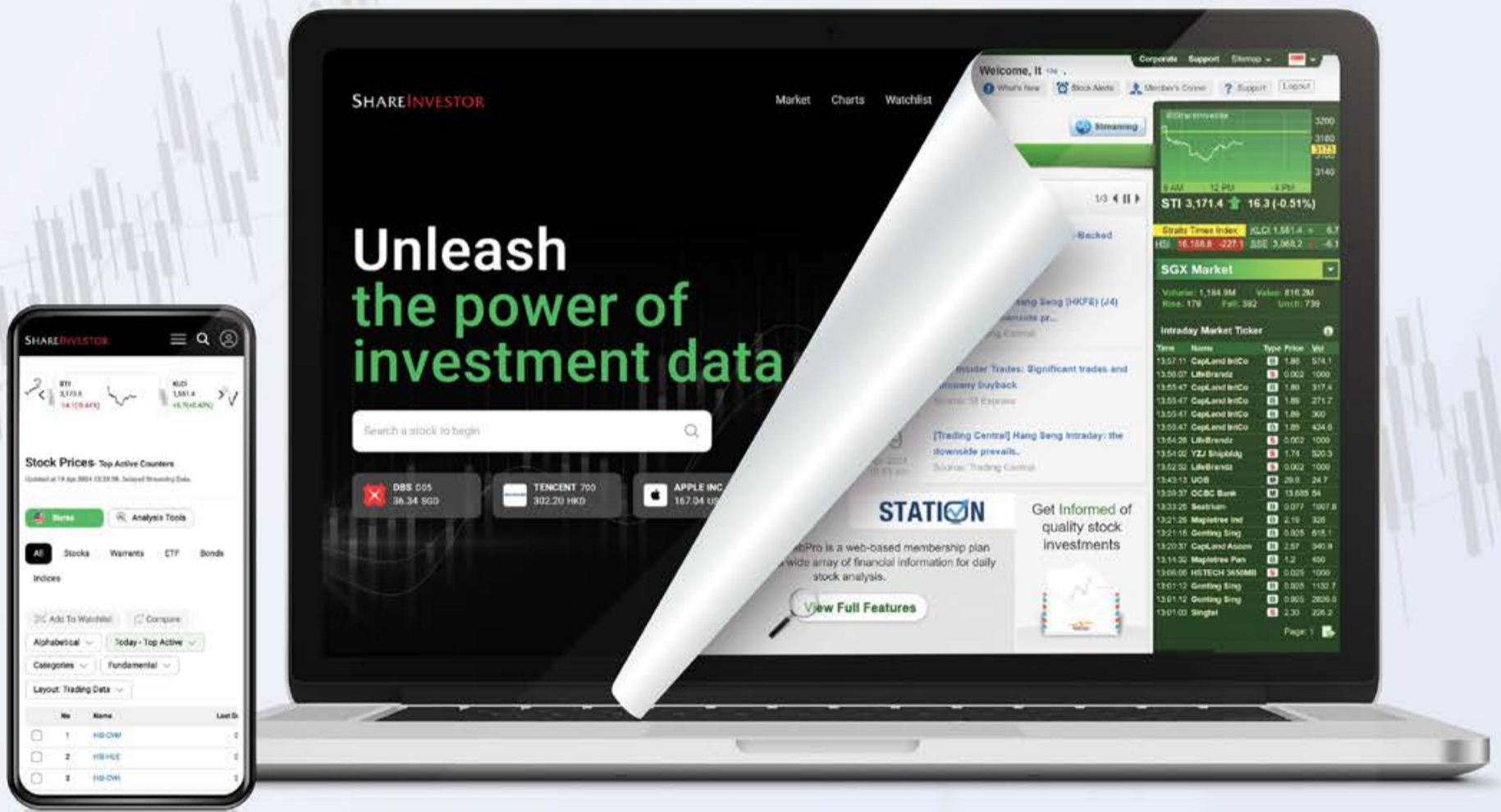
Period	Dividend Received	Capital Appreciation	Total Shareholder Return	
Short Term Return	5 Days	-	+0.010	+1.67 %
	10 Days	0.009	+0.010	+3.17 %
	20 Days	0.009	-0.020	-1.75 %
Medium Term Return	3 Months	0.009	-0.125	-16.78 %
	6 Months	0.009	-0.250	-26.02 %
	1 Year	0.009	-0.100	-12.82 %
Long Term Return	2 Years	0.018	-0.315	+112.88 %
	3 Years	0.033	-0.445	+289.70 %
	5 Years	0.033	-0.350	+147.31 %
Annualised Return	Annualised	-	-	+19.85 %

SHAREINVESTOR®

An AlphaInvest Company

EXPERIENCE

The New ShareInvestor Website



**Advanced
Data
Visualizations**



**Comprehensive
Portfolio
Feature**



**Enhanced
Look &
Feel**



**TRY ME
NOW**



DEFINITION Share price of a company trading at a lower price as compared to its fundamentals (FA) such as financial performance and dividend, allowing it to be attractive to value investors.

CHART GUIDE Total Shareholder Return (TSR) combines share price appreciation and dividend distributions paid to show the total return to the shareholder expressed as a percentage.



ShareInvestor WebPro > Screener > Market Screener (FA & TA) > select SGX > add criteria

A. Criteria

- > click Add Criteria
- Fundamental Analysis Conditions tab (i) Price Earnings Ratio
- Fundamental Analysis Conditions tab >select (ii) CAGR of Net Earnings
- Fundamental Analysis Conditions tab >select (iii) Net Debt To Equity
- Fundamental Analysis Conditions tab >select (iv) Return On Equity (ROE)

B. Conditions

1. Price Earnings Ratio – select (less than) type (15) times now
2. CAGR of Net Earnings – select (more than) type (10) % for the past type (3) financial year(s)
3. Net Debt To Equity – select (less than) type (1) for the past select (1) financial year(s)
4. Return On Equity (ROE) – select (more than) type (10) % for the past select (1) financial year(s)

- > click Save Template > Create New Template type (Value Stock) > click Create
- > click Save Template as > select Value Companies > click Save
- > click Screen Now (may take a few minutes)
- > Mouse over stock name > Factsheet > looking for Total Shareholder Return
- > Mouse over stock name > Charts > click C2 Charts tab



NAM CHEONG LTD (1MZ.SI)

ANALYSIS

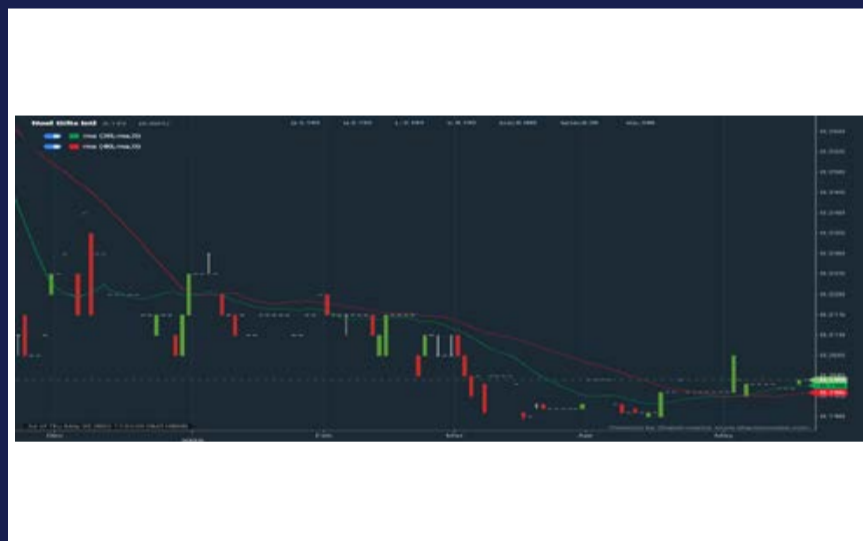


Period	Dividend Received	Capital Appreciation	Total Shareholder Return
Short Term Return	5 Days	-0.045	-7.89 %
	10 Days	-0.035	-6.25 %
	20 Days	-0.095	-16.32 %
Medium Term Return	3 Months	-0.020	-3.67 %
	6 Months	+0.165	+46.83 %
	1 Year	+0.344	+190.06 %
Long Term Return	2 Years	+0.125	+31.26 %
	3 Years	+0.125	+31.26 %
	5 Years	+0.125	+31.26 %
Annualised Return	Annualised	-	+5.59 %



NOEL GIFTS INTERNATIONAL LTD (543.SI)

ANALYSIS



Period	Dividend Received	Capital Appreciation	Total Shareholder Return
Short Term Return	5 Days	+0.001	+0.51 %
	10 Days	+0.001	+0.51 %
	20 Days	+0.003	+1.53 %
Medium Term Return	3 Months	-0.016	-7.44 %
	6 Months	-0.031	-13.48 %
	1 Year	0.120	+43.69 %
Long Term Return	2 Years	0.132	+120.67 %
	3 Years	0.147	+127.63 %
	5 Years	0.192	+294.95 %
Annualised Return	Annualised	-	+31.62 %



BBR HOLDINGS (S) LTD (KJ5.SI)

ANALYSIS



Period	Dividend Received	Capital Appreciation	Total Shareholder Return
Short Term Return	5 Days	-0.002	-1.43 %
	10 Days	0.003	+7.63 %
	20 Days	0.003	+6.82 %
Medium Term Return	3 Months	0.003	+1.44 %
	6 Months	0.003	+18.49 %
	1 Year	0.003	+29.36 %
Long Term Return	2 Years	0.006	+28.57 %
	3 Years	0.009	+23.53 %
	5 Years	0.012	-16.73 %
Annualised Return	Annualised	-	-3.37 %

COMPANY SPOTLIGHT

3 Mid-Cap Stocks with Hidden Growth Catalysts

Investor-One / Sat, May 3, 8:00 PM



While Singapore's blue-chip stocks often dominate headlines, the mid-cap segment harbours companies with substantial growth potential waiting to be unlocked.

These firms, typically valued between S\$100 million and S\$3 billion, combine the agility of smaller enterprises with the stability of established players.

In this article, we spotlight three SGX-listed mid-cap stocks that are poised for significant growth in 2025, driven by unique catalysts and robust financial performances.

1. PropNex Limited (SGX: OYY)



PropNex Limited, Singapore's largest listed real estate agency, has built a formidable presence with over 10,000 sales professionals. The company's asset-light model has enabled it to scale efficiently, capitalizing on the nation's dynamic property market.

In FY2024, PropNex reported revenue of S\$783 million, a 6.6% decline from the previous year, and a net profit of S\$40.9 million, down 14%. Despite these headwinds, the company maintained a healthy net margin of 5.2%, reflecting disciplined cost management.

The dip in revenue and profit was primarily due to a slowdown in project marketing services, a segment sensitive to market cycles. However, PropNex's diversified income streams, including resale and rental transactions, provided a buffer against the downturn. The company's strong return on equity of 33.4% underscores its operational efficiency and effective capital deployment.

Looking ahead, PropNex is well-positioned to benefit from Singapore's urban redevelopment initiatives and government policies aimed at enhancing housing affordability. The company's strategic investments in digital platforms and training programs are expected to enhance agent productivity and customer engagement, driving future growth.

Moreover, PropNex's regional expansion plans, particularly in Malaysia and Indonesia, present new avenues for revenue

continued... [3 Mid-Cap Stocks with Hidden Growth Catalysts]

diversification. By leveraging its brand reputation and operational expertise, the company aims to replicate its successful business model in these emerging markets.

In summary, while PropNex faced challenges in FY2024, its strong fundamentals, strategic initiatives, and market leadership position it for a rebound in 2025, making it a compelling mid-cap stock for investors seeking exposure to the real estate sector.

2. SBS Transit Ltd (SGX: S61)

SBS Transit Ltd, a key player in Singapore's public transportation landscape, operates an extensive network of bus and rail services.



In FY2024, the company reported revenue of S\$1.56 billion, a 2.1% increase from the previous year, and a net profit of S\$70.3 million, up 1.8%. The company's operating margin stood at 4.69%, reflecting stable operational efficiency in a capital-intensive industry.

The modest growth in revenue and profit was driven by increased ridership as Singapore's economy continued its post-pandemic

continued... [3 Mid-Cap Stocks with Hidden Growth Catalysts]

recovery. SBS Transit's commitment to service excellence and operational reliability has solidified its position as a trusted public transport provider. The company's consistent dividend payouts further enhance its appeal to income-focused investors.

Looking forward, SBS Transit is poised to benefit from government initiatives aimed at enhancing public transportation infrastructure. The company's investments in fleet modernization and digitalization are expected to improve service quality and operational efficiency. Additionally, SBS Transit's exploration of sustainable transportation solutions aligns with global trends and regulatory focus on environmental sustainability.

The company's strong balance sheet and prudent financial management provide the flexibility to invest in growth opportunities and navigate potential challenges. As Singapore continues to prioritize public transportation as a key component of its urban development strategy, SBS Transit is well-positioned to capitalize on these trends.

In conclusion, SBS Transit's stable financial performance, strategic investments, and alignment with national transportation goals make it a resilient mid-cap stock with steady growth prospects.

3. ISOTeam Ltd (SGX: 5WF)

ISOTeam Ltd, a leading player in Singapore's building maintenance and estate upgrading sector, has demonstrated remarkable growth in recent years.

In FY2024, the company reported revenue of S\$130.2 million, an 18% increase from the previous year, and a net profit of S\$6.5 million, up 363.6%. This impressive performance was driven by increased demand for addition and alteration (A&A) works and improved project margins.

continued... [3 Mid-Cap Stocks with Hidden Growth Catalysts]

The company's diversified service offerings, including repairs and redecoration, coatings and paintings, and green solutions, have enabled it to capture a broad customer base across public and private sectors.

ISOTeam's focus on sustainable practices and energy-efficient solutions positions it favourably in an increasingly environmentally conscious market.

Looking ahead, ISOTeam stands to benefit from Singapore's emphasis on infrastructure development and urban renewal.



A significant roll-out of residential projects has led to higher-than-expected demand in 2024.
PHOTO: BT FILE

As shown above, the Building and Construction Authority's projection of S\$47 to S\$53 billion in construction demand for 2025 presents significant opportunities for the company. ISOTeam's robust order

continued... [3 Mid-Cap Stocks with Hidden Growth Catalysts]

book of S\$188.7 million, with projects extending until FY2029, provides revenue visibility and growth potential.

The company's recent capital reduction exercise has strengthened its financial position, enhancing its ability to retain profits and potentially increase dividend payouts. ISOTeam's strategic investments in technology and process improvements are expected to drive operational efficiency and margin expansion.

In summary, ISOTeam's strong financial performance, diversified services, and alignment with national development priorities make it an attractive mid-cap stock with significant growth potential in the construction and maintenance sector.

Conclusion

Singapore's mid-cap sector offers a fertile ground for investors seeking growth opportunities beyond the traditional blue-chip companies. PropNex Limited, SBS Transit Ltd, and ISOTeam Ltd each present unique value propositions, underpinned by strong market positions, sound financials, and strategic growth initiatives.

As Singapore continues to evolve, these mid-cap companies are well-positioned to capitalize on emerging trends and government initiatives.

Investors looking to diversify their portfolios and tap into the growth potential of the SGX should consider these hidden gems.

Disclaimer: *This article is for informational purposes only and not intended as investment advice.*

REITS
SYMPOSIUM
by AlphaInvest

24
MAY 2025



9.00am - 5.00pm

Suntec Convention Center
Level 3, Summit 1 & 2

INVESTOR-ONE PORTFOLIO

Curated and managed by the Investor-One team under ShareInvestor, this **free-to-access** portfolio will feature local small and mid-cap companies within Singapore Exchange's Mainboard and Catalist.

Join us on the journey and watch as we manage a locally vested portfolio with a **fund of \$100,000**.



ENTER PORTFOLIO 

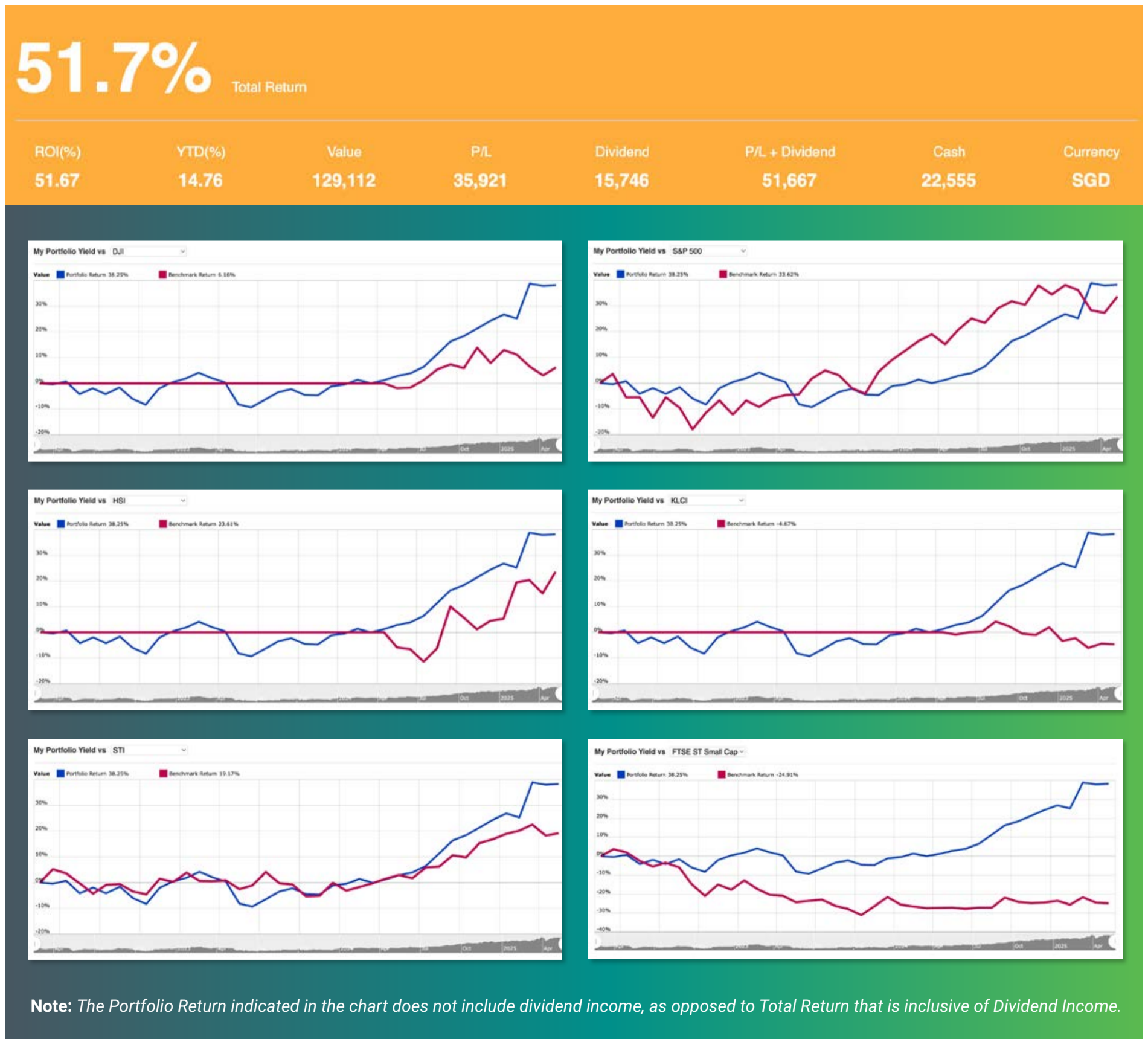
Investor-One Portfolio

(As at yesterday)

Curated by Investor-One team, this portfolio features growing small and mid cap companies within Singapore Exchange Catalist and Main Board.

The criteria for the companies are selected based on the following metrics, with further evaluation on qualitative factors like management team and growth prospects:

 <p>Market Capitalisation of S\$3 billion and below</p>	 <p>PE Ratio < 15 times OR PB Ratio < 0.5 times</p>
 <p>Net Debt/Equity < 2 times</p>	 <p>Positive Free Cash Flow</p>



INVESTOR-ONE

Discover Growing Companies

Summary

[Open Positions](#)

Unrealized P/L ↑ 39,921

Name↑	Weightage	Entry	Last	Chg	Share	P/L	Div	P/L + Div	Cost	Value
Centurion	50.73%	0.4	1.31	-0.01 (-0.76%)	50000	45,500 (227.50%)	2,500	48,000	20,000	65,500
Geo Energy Res	8.76%	0.31	0.35	-	32300	1,292 (12.90%)	2,342	3,634	10,013	11,305
Hock Lian Seng	5.89%	0.29	0.38	0.005 (1.33%)	20000	1,800 (31.03%)	1,110	2,910	5,800	7,600
Hyphens Pharma	11.23%	0.3	0.29	-	50000	-500 (-3.33%)	3,870	3,370	15,000	14,500
JEP Hldgs	4.88%	0.31	0.195	-	32300	-3,715 (-37.10%)	-	-3,715	10,013	6,299
Kimly	2.52%	0.4	0.325	-	10000	-750 (-18.75%)	536	-214	4,000	3,250
Nordic	2.67%	0.395	0.345	-	10000	-500 (-12.66%)	617	117	3,950	3,450
+ UtdHampshReitUSD	13.33%	0.681	0.445	0.005 (1.14%)	30000	-3,207 (-15.71%)	2,398	-809	20,415	17,208

Summary

[Closed Positions](#)

Realized Profit ↓ -4,000

Name↑	Avg Buy	Avg Sell	Shares	Comm	P/L	P/L + Div	Proceeds
HG Metal	0.375	0.34	10000	-	-350	50	3,400
HRnetGroup	0.77	0.715	20000	-	-1,100	674	14,300
InnoTek	0.735	0.48	10000	-	-2,550	-2,350	4,800

Transaction

Action	Stock	Price	Shares	Exchange Rate	Comm	Amount	Date↓	Notes
Sell	HRnetGroup	0.715	20000	N/A	0.00	14,300	2 Jan 2024	-
Buy	Centurion	0.400	50000	N/A	0.00	20,000	2 Jan 2024	-
Buy	UtdHampshReitUSD	0.500	30000	1.36	0.00	15,000	2 Jan 2024	-
Buy	JEP Hldgs	0.310	32300	N/A	0.00	10,013	4 Jul 2023	-
Buy	Geo Energy Res	0.310	32300	N/A	0.00	10,013	13 Mar 2023	-
Sell	HG Metal	0.340	10000	N/A	0.00	3,400	13 Mar 2023	-
Sell	InnoTek	0.480	10000	N/A	0.00	4,800	13 Mar 2023	-
Buy	HRnetGroup	0.770	20000	N/A	0.00	15,400	16 Feb 2022	-
Buy	Kimly	0.400	10000	N/A	0.00	4,000	16 Feb 2022	-
Buy	HG Metal	0.375	10000	N/A	0.00	3,750	16 Feb 2022	-
Buy	InnoTek	0.735	10000	N/A	0.00	7,350	16 Feb 2022	-
Buy	Nordic	0.395	10000	N/A	0.00	3,950	16 Feb 2022	-
Buy	Hyphens Pharma	0.300	50000	N/A	0.00	15,000	16 Feb 2022	-
Buy	Hock Lian Seng	0.290	20000	N/A	0.00	5,800	16 Feb 2022	-
Cash	Deposit	-	-	N/A	-	100,000	15 Feb 2022	-

continued on next page...

INVESTOR-ONE

Discover Growing Companies

Dividend

YTD		TRAILING 12 MONTHS		2024		2023	
SGD 3302.59		SGD 5144.35		SGD 4578.51		SGD 5405.90	
Stock	Ex-Date	Payable Date	Amt	Amt(SGD)	Total		
Kimly	25 Jun 2025	15 Jul 2025	SGD 0.0100	0.0100	100		
Geo Energy Res	20 May 2025	30 May 2025	SGD 0.0025	0.0025	80.75		
Nordic	07 May 2025	19 May 2025	SGD 0.0090	0.0090	89.90		
Hyphens Pharma	06 May 2025	23 May 2025	SGD 0.0150	0.0150	750		
Geo Energy Res	06 May 2025	16 May 2025	SGD 0.0040	0.0040	129.20		
Centurion	06 May 2025	26 May 2025	SGD 0.0200	0.0200	1000		
Hock Lian Seng	04 May 2025	16 May 2025	SGD 0.0180	0.0180	360		
UtdHampshReitUSD	25 Feb 2025	28 Mar 2025	SGD 0.0076	0.0098	293.89		
UtdHampshReitUSD	25 Feb 2025	28 Mar 2025	SGD 0.0129	0.0166	498.84		
Kimly	03 Feb 2025	14 Feb 2025	SGD 0.0100	0.0100	100		
Geo Energy Res	15 Dec 2024	08 Jan 2025	SGD 0.0020	0.0020	64.60		
Centurion	05 Sep 2024	30 Sep 2024	SGD 0.0150	0.0150	750		
Geo Energy Res	20 Aug 2024	29 Aug 2024	SGD 0.0020	0.0020	64.60		
UtdHampshReitUSD	20 Aug 2024	27 Sep 2024	SGD 0.0133	0.0171	514.31		
UtdHampshReitUSD	20 Aug 2024	27 Sep 2024	SGD 0.0068	0.0088	262.96		
Nordic	19 Aug 2024	04 Sep 2024	SGD 0.0085	0.0085	85.30		
Kimly	26 Jun 2024	15 Jul 2024	SGD 0.0100	0.0100	100		
Geo Energy Res	22 May 2024	31 May 2024	SGD 0.0020	0.0020	64.60		
Centurion	08 May 2024	31 May 2024	SGD 0.0150	0.0150	750		
Geo Energy Res	08 May 2024	17 May 2024	SGD 0.0060	0.0060	193.80		
Nordic	07 May 2024	17 May 2024	SGD 0.0059	0.0059	58.80		
Hyphens Pharma	07 May 2024	24 May 2024	SGD 0.0086	0.0086	430		
Hock Lian Seng	05 May 2024	17 May 2024	SGD 0.0150	0.0150	300		
UtdHampshReitUSD	28 Feb 2024	28 Mar 2024	SGD 0.0132	0.0170	510.44		
UtdHampshReitUSD	28 Feb 2024	28 Mar 2024	SGD 0.0082	0.0106	317.09		
Kimly	29 Jan 2024	09 Feb 2024	SGD 0.0112	0.0112	112		
Geo Energy Res	20 Nov 2023	29 Nov 2023	SGD 0.0040	0.0040	129.20		
HRnetGroup	30 Aug 2023	11 Sep 2023	SGD 0.0187	0.0187	374		
Geo Energy Res	28 Aug 2023	06 Sep 2023	SGD 0.0050	0.0050	161.50		
Nordic	17 Aug 2023	04 Sep 2023	SGD 0.0100	0.0100	100.10		
Hyphens Pharma	16 Aug 2023	31 Aug 2023	SGD 0.0360	0.0360	1800		
Kimly	27 Jun 2023	14 Jul 2023	SGD 0.0056	0.0056	56		
Geo Energy Res	29 May 2023	08 Jun 2023	SGD 0.0050	0.0050	161.50		
Hyphens Pharma	09 May 2023	24 May 2023	SGD 0.0111	0.0111	555		
Geo Energy Res	08 May 2023	17 May 2023	SGD 0.0400	0.0400	1292		
Nordic	07 May 2023	17 May 2023	SGD 0.0091	0.0091	90.60		
Hock Lian Seng	07 May 2023	19 May 2023	SGD 0.0100	0.0100	200		
HRnetGroup	03 May 2023	12 May 2023	SGD 0.0187	0.0187	374		
Kimly	26 Jan 2023	08 Feb 2023	SGD 0.0112	0.0112	112		
HRnetGroup	28 Aug 2022	06 Sep 2022	SGD 0.0213	0.0213	426		
Nordic	16 Aug 2022	02 Sep 2022	SGD 0.0116	0.0116	116.20		
Kimly	29 Jun 2022	15 Jul 2022	SGD 0.0056	0.0056	56		
Hyphens Pharma	11 May 2022	25 May 2022	SGD 0.0067	0.0067	335		
InnoTek	10 May 2022	25 May 2022	SGD 0.0200	0.0200	200		
HRnetGroup	08 May 2022	18 May 2022	SGD 0.0300	0.0300	600		
Hock Lian Seng	08 May 2022	20 May 2022	SGD 0.0125	0.0125	250		
HG Metal	05 May 2022	20 May 2022	SGD 0.0400	0.0400	400		
Nordic	05 May 2022	17 May 2022	SGD 0.0061	0.0061	60.80		
Nordic	05 May 2022	17 May 2022	SGD 0.0015	0.0015	15.20		

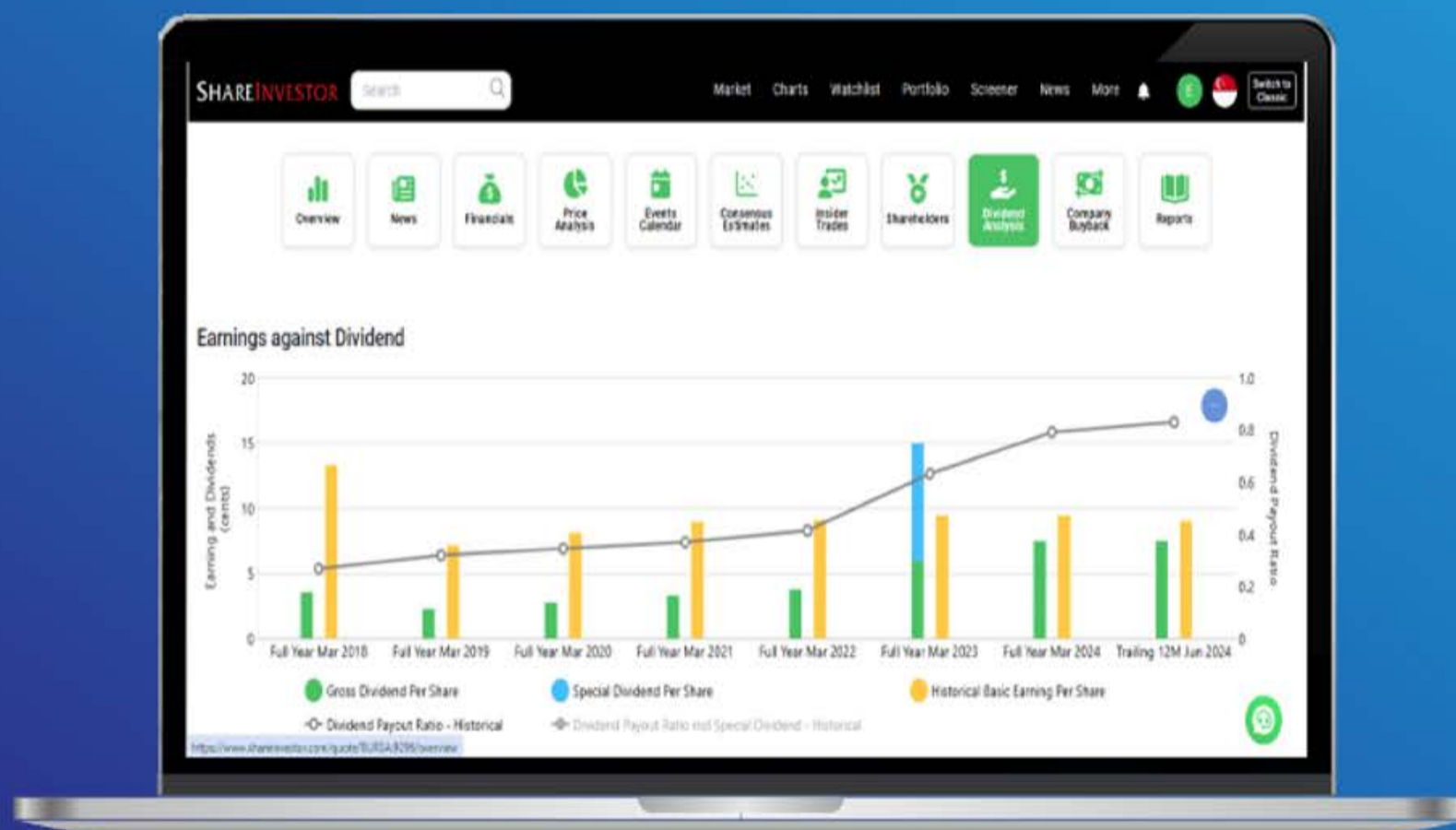
This portfolio is managed by Investor-One research team, under ShareInvestor.

Disclaimer:

- The Investor-One portfolio is aggregated for educational and illustration purposes only. It is curated based on fixed financial parameters as indicated above. The investor-one team select their stocks solely base on the these fixed parameters. The featured companies are for information only and does not constitute investment advice.
- The investor-one team is not licensed by any financial authority in Singapore. You should consult your Trading Representative or Financial Advisors before making any financial decisions.
- Current Price, current value and gain/loss (%) under current portfolio are based on 10 minutes delayed data.
- Purchase Price and Exit Price are based on EOD price.
- The views and opinions expressed does not necessarily reflect those of ShareInvestor Pte Ltd nor any related companies of ShareInvestor Pte Ltd.

SHAREINVESTOR[®]
An AlphaInvest Company

Tired of low returns? Let's talk high-paying Dividends!



- ✓ **Top Dividend Picks Right Now**
- ✓ **Insider Tips** – Advanced strategies for experienced investors
- ✓ **Easy-to-Follow Tutorial**

Get the most out of dividends, use our Dividend Analysis function –
Click to Watch Our Tutorial Below!

Upgrade Your Dividend Strategy Here



COMPANY SPOTLIGHT

Analyst Alert: Recommendation And Consensus On SIA Engineering, ComfortDelGro Corporation, Lendlease Global Commercial REIT, UMS Integration

Investor-One / Thu, May 15, 8:00 PM



CGS INTERNATIONAL: [SIA Engineering](#)

Current Price: S\$2.32 (as of 14 May 2025)
Target Price: S\$2.70
Recommendation: **ADD**
Up/downside: +16.4%

continued... [Analyst Alert: Recommendation And Consensus On SIA Engineering, ComfortDelGro Corporation, Lendlease Global Commercial REIT, UMS Integration]

Consensus Recommendation Overweight	Mean Target Price (SGD) 2.600	Consensus Rating 1.50	Number of Ratings 2
		Upside +0.220	Upside (%) +9.24

SIA Engineering’s FY25 core net profit rose 17.4% YoY to S\$140.2m, slightly below forecast due to lower interest income and higher taxes. Operationally strong, with rising line and base maintenance volumes. Capacity expansion in Cambodia, Subang, and Bangalore supports long-term MRO growth despite near-term setup costs. Dividend payout of 9 Scts implies 72% ratio. Contract renewal with SIA could be a key catalyst. Maintain ADD, TP raised to S\$2.70, based on 19.5x CY26F P/E.

UOB KAYHIAN: **ComfortDelGro Corporation**

Current Price: S\$1.52 (as of 14 May 2025)

Target Price: S\$1.71

Recommendation: BUY

Up/downside: +12.8%

Consensus Recommendation Buy	Mean Target Price (SGD) 1.752	Consensus Rating 1.11	Number of Ratings 9
		Upside +0.282	Upside (%) +19.20

ComfortDelGro’s 1Q25 results were mixed, with revenue up 16.4% YoY in line, but PATMI grew 18.8% YoY—below expectations due to higher amortisation from acquisitions. Public transport margins improved, while the taxi segment saw strong inorganic growth, tempered by stiff ride-hailing competition. Management expects margin expansion from UK contracts and better sequential growth in 2Q. Maintain BUY, but trim TP to S\$1.71 (from S\$1.76) on revised earnings. 2025F yield remains attractive at 5.8%.

CGS INTERNATIONAL: Lendlease Global Commercial REIT

Current Price: S\$0.505 (as of 8 May 2025)

Target Price: S\$0.69

Recommendation: ADD

Up/downside: +36.6%

Consensus Recommendation Overweight	Mean Target Price (SGD) 0.650	Consensus Rating 1.42	Number of Ratings 6
		Upside +0.155	Upside (%) +31.31

LREIT's 3QFY25 portfolio occupancy held steady at 92.1%, with retail at 99.5%. Rental reversions remained strong at +10.4%, despite softer retail sentiment. The REIT plans to reduce gearing (currently 38%, may rise to 43%) via asset recycling, including potential Jem Office divestment. Key growth levers include leasing progress at Sky Complex and retail rent uplift. Maintain Add with DDM-based TP of S\$0.69, implying a 7.8% FY25F yield. Risks: weak reversions and sluggish consumer demand.

UOB KAYHIAN: UMS Integration

Current Price: S\$1.12 (as of 14 May 2025)

Target Price: S\$1.32

Recommendation: BUY

Up/downside: +17.9%

Consensus Recommendation Buy	Mean Target Price (SGD) 1.297	Consensus Rating 1.17	Number of Ratings 3
		Upside +0.147	Upside (%) +12.75

continued... [Analyst Alert: Recommendation And Consensus On SIA Engineering, ComfortDelGro Corporation, Lendlease Global Commercial REIT, UMS Integration]

UMS Integration’s 1Q25 earnings of S\$10m (flat YoY) met expectations, driven by 7% revenue growth and stronger gross margins (55.9%). Forex loss of S\$1m offset gains, while Malaysia sales surged 287% from new customer ramp-up. UMS expects continued benefit from trade diversion. Semiconductor demand and AI-led capex offer tailwinds. EPS forecast for FY26 is 7.5 S cents. Maintain BUY with a 9% higher TP of S\$1.32 (17.5x FY26 PE).

Disclaimer: *This article is for informational purposes only and not intended as investment advice.*



EXPERIENCE

The New ShareInvestor Website





Advanced Data Visualizations



Comprehensive Portfolio Feature



Enhanced Look & Feel



SIGN UP FOR Invest NOW

IT'S FREE!

INVESTOR ACADEMY provides a weekly tutorial on Investor Education. **COMPANY SPOTLIGHT** gives you valuable insights into small and mid-cap companies with great potential. **SIGN UP** for Investor Education Events.

Regular columns include **Market At A Glance** • **Regional Markets** • **Top Dividend/Growth/Value Stocks** • **Investor-One Portfolio** • **Top Significant Insider Activity** • **Investment Books On sale** • **Investor Relations PLC Announcements**

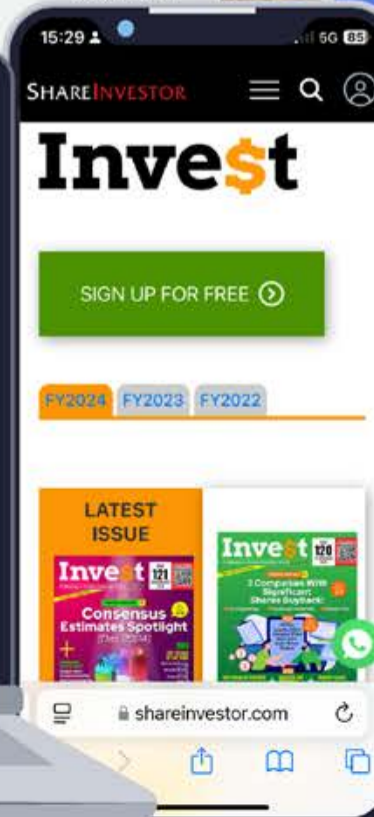
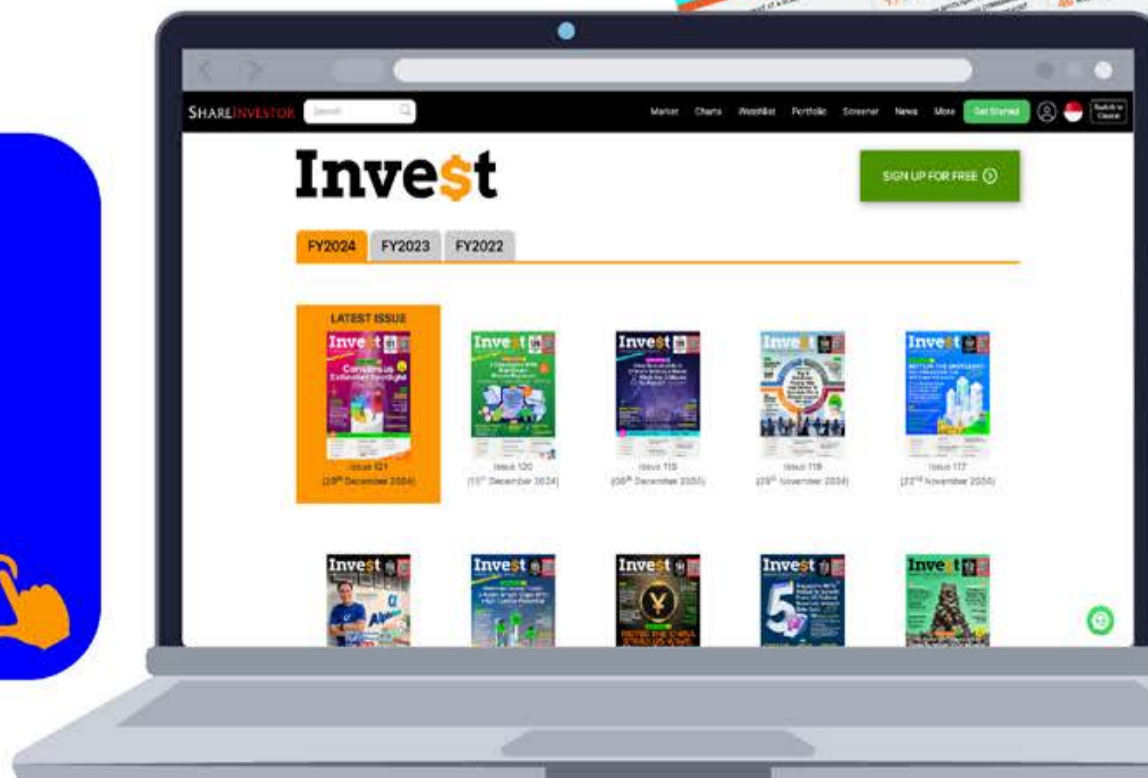


Scan or click me



Via email, weekly

Click Here 



Model image designed by Freepik.



Data extracted from WebPro, accurate as at yesterday

Effective Change Date (Notice Date)	Stock Name	Buyer / Seller Name (Classification *)	Security Types ^b	Acquired / (Disposed) ['000]			Price	Closing Price ^d	No. of Shares After Trade ['000]			
				Direct	Deemed	Total			Direct	Deemed	Total	% Held ^e
21 May 2025 (21 May 2025)	Frasers L&C Tr	Frasers Logistics & Commercial Asset Management Pte. Ltd. ("FLCAM") [Tm/Rp]	S/U	387		387		0.800	19,200		19,200	0.509
20 May 2025 (21 May 2025)	Ho Bee Land	Chua Thian Poh [Dir/CEO]	S/U		30	30		1.790		502,312	502,312	75.647
21 May 2025 (21 May 2025)	Sinostar Pec	LI XIANG PING [Dir/CEO]	S/U		150	150	0.142	0.136		666,619	666,619	69.430
21 May 2025 (21 May 2025)	Sinostar Pec	INTELLIGENT PEOPLE HOLDINGS LIMITED [SSH]	S/U		150	150	0.142	0.136	602,311	64,309	666,619	69.430
19 May 2025 (21 May 2025)	Prudential USD	Solmaz Altin [Dir/CEO]	S/U			0.025	GBP 8.651	9.450				
19 May 2025 (21 May 2025)	Prudential USD	Bill Maldonado [Dir/CEO]	S/U			0.032	GBP 8.651	9.450				
19 May 2025 (21 May 2025)	Prudential USD	Dennis Tan [Dir/CEO]	S/U			0.043	GBP 8.651	9.450				
19 May 2025 (21 May 2025)	Prudential USD	Ben Bulmer [Dir/CEO]	S/U			0.091	GBP 8.651	9.450				
19 May 2025 (21 May 2025)	Prudential USD	Kenneth Rappold [Dir/CEO]	S/U			0.005	GBP 8.651	9.450				
19 May 2025 (21 May 2025)	Prudential USD	Avnish Kalra [Dir/CEO]	S/U			0.084	GBP 8.651	9.450				
19 May 2025 (21 May 2025)	Prudential USD	Catherine Chia [Dir/CEO]	S/U			0.015	GBP 8.651	9.450				
19 May 2025 (21 May 2025)	Prudential USD	Anil Wadhvani [Dir/CEO]	S/U			4	HKD 90.75	9.450				
16 May 2025 (21 May 2025)	Cordlife	Matinal Best Limited [SSH]	S/U	686		686		0.255	26,203		26,203	10.220
16 May 2025 (21 May 2025)	Cordlife	Kang Lan [SSH]	S/U		686	686		0.255		26,203	26,203	10.220
20 May 2025 (21 May 2025)	TrickleStar	HARALD WEINBRECHT [SSH]	S/U	-2,000		-2,000		0.028	12,935		12,935	8.530
20 May 2025 (21 May 2025)	JB Foods	Goi Seng Hui [Dir/CEO]	R/O/W		11,321	11,321		0.455				
20 May 2025 (21 May 2025)	JB Foods	Goh Lee Beng [Dir/CEO]	R/O/W		-11,321	-11,321		0.455				
20 May 2025 (21 May 2025)	JB Foods	Tey How Keong [Dir/CEO]	R/O/W		-11,321	-11,321		0.455				
20 May 2025 (21 May 2025)	Mapletree Ind Tr	Cheah Kim Teck [Dir/CEO]	S/U	100		100	1.930	1.910	350		350	0.012
21 May 2025 (21 May 2025)	Wing Tai	Cheng Wai Keung [Dir/CEO]	S/U		150	150		1.240	214	471,170	471,385	61.780
21 May 2025 (21 May 2025)	Frencken	DATO' SERI GOOI SOON CHAI [Dir/CEO]	S/U		45	45		1.130	7,717	93,673	101,390	23.740
19 May 2025 (21 May 2025)	ST Engineering	Ng Bee Bee [Dir/CEO]	S/U	6		6		7.460	41		41	
16 May 2025 (21 May 2025)	IHH	EMPLOYEES PROVIDENT FUND BOARD [SSH]	S/U	-1,090		-1,090		2.110	960,078		960,078	10.881
14 May 2025 (21 May 2025)	JMH USD	Ben Keswick and Adam Keswick [Dir/CEO]	S/U			419	USD 42.522	48.130				
05 Nov 2024 (21 May 2025)	JMH USD	Ben Keswick and Adam Keswick [Dir/CEO]	S/U			10,887		40.660				
20 May 2025 (21 May 2025)	CosmoSteel*	ONG TONG HAI [Dir/CEO]	S/U	5,550		5,550		0.225	43,442		43,442	16.620
20 May 2025 (20 May 2025)	Riverstone	WONG TEEK SON [Dir/CEO]	S/U		1,000	1,000		0.715	8,868	753,133	762,001	51.400
20 May 2025 (20 May 2025)	Sinostar Pec	LI XIANG PING [Dir/CEO]	S/U		200	200	0.142	0.140		666,469	666,469	69.420
20 May 2025 (20 May 2025)	Sinostar Pec	INTELLIGENT PEOPLE HOLDINGS LIMITED [SSH]	S/U		200	200	0.142	0.140	602,311	64,159	666,469	69.420
19 May 2025 (20 May 2025)	ST Engineering	Neo Gim Huay [Dir/CEO]	S/U	5		5		7.460	5		5	

Disclaimer: The information on this page is provided as a service to readers. It does not constitute financial advice and/or any investment recommendations. Past performance is not indicative of future results. We assume no liability for damages resulting from or arising out of the use of such information. It would be best if you did your own research to make your personal investment decisions wisely or consult a licenced investment advisor.

COMPANY SPOTLIGHT 

Insiders Are Buying. Is It Time You Look at Venture Corporation Too?

Investor-One / Mon, Apr 28, 8:00 PM



In a world driven by rapid technological advancement, Venture Corporation Limited has carved a dynamic niche as a global innovator since its inception in 1989. Headquartered in Singapore, this powerhouse transforms bold ideas into cutting-edge solutions, partnering with over 100 leading brands to shape industries from life sciences to next-generation communications. With a bold vision and a footprint spanning continents, Venture's story is one of resilience, creativity, and relentless pursuit of excellence, setting the stage for a deep dive into its journey and prospects.

Overview

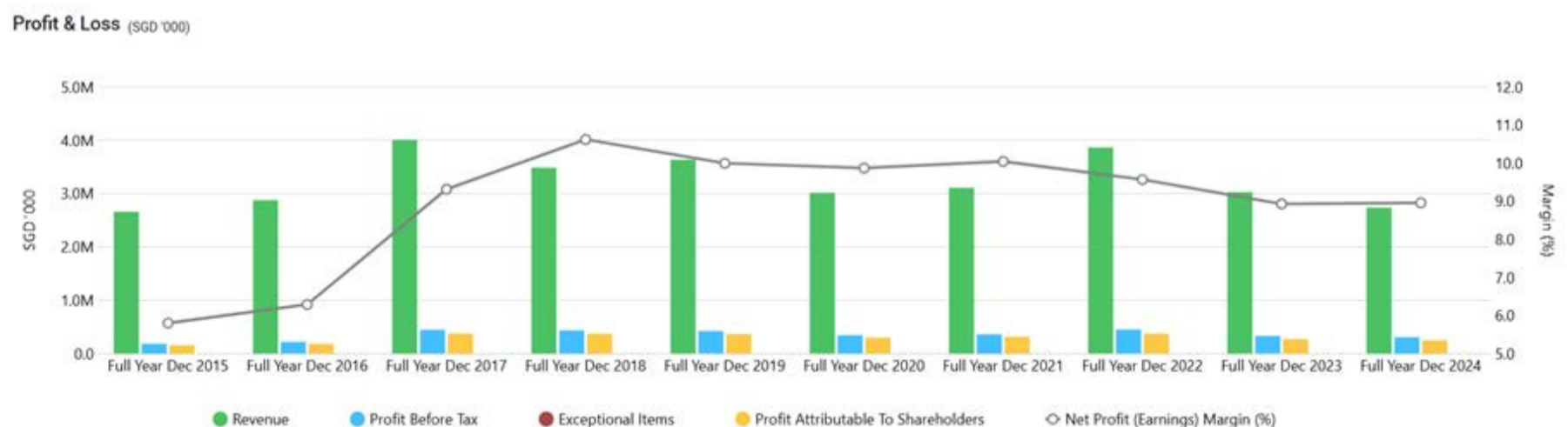
[Venture Corporation Limited](#), founded in 1989 and headquartered in Singapore, is a leading global provider of technology services,

continued... [Insiders Are Buying. Is It Time You Look at Venture Corporation Too?]

products, and solutions. With a workforce of over 12,000 employees across Southeast Asia, Northeast Asia, North America, and Europe, the company serves more than 100 global brands. Venture specializes in advanced manufacturing and design, offering capabilities in R&D, product industrialization, advanced manufacturing technology, supply chain solutions, and product lifecycle management. Its expertise spans diverse technology domains, including life sciences and MedTech, lifestyle and wellness, smart industrial systems, test and measurement instrumentation, and next-generation communications, delivering over 5,000 products and solutions to industries worldwide.

The company prides itself on transforming ideas into reality, acting as a reliable technology partner for its customers by providing high-mix, high-value, and complex manufacturing services. Venture’s global presence and best-in-class capabilities enable it to collaborate with clients and partners to expand into new technology areas, fostering innovation and improving lives. With over three decades of experience, the company maintains a strong focus on customer satisfaction, creativity, and excellence, supported by a robust network of facilities and a commitment to sustainable growth. This positions Venture as a key player in the global technology ecosystem, driving impactful solutions across multiple sectors.

Financial Performance At A Glance



Source: ShareInvestor.com

continued... [Insiders Are Buying. Is It Time You Look at Venture Corporation Too?]

Over the past decade, Venture Corporation Limited's revenue has fluctuated between SGD 2.6 billion and SGD 4.0 billion, while net profit has ranged from SGD 154 million to SGD 373 million. The year 2017 marked its peak, with 2022 nearly reaching the same level but falling slightly short. Notably, the net profit margin from 2017 to 2024 has remained stable, consistently within 9% to 11%. From this, we can conclude that the company's business is relatively stable, with its financial performance primarily influenced by external business environment factors, such as low demand impacting overall results.

Cash Flow (SGD '000)



Source: ShareInvestor.com

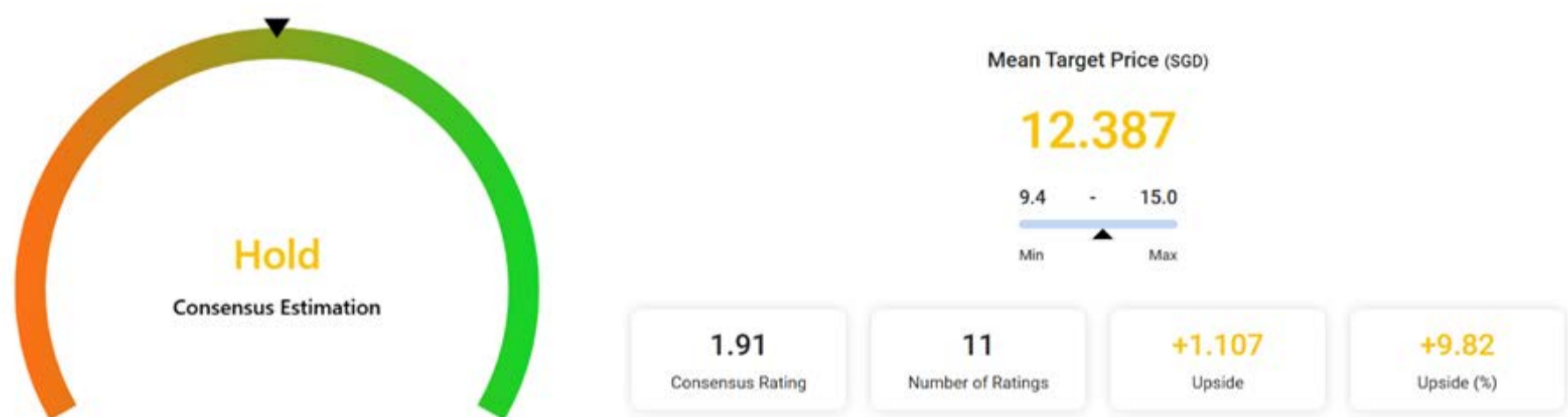
Over the past years, Venture has consistently generated positive free cash flow, with cash flow from operations always remaining in the positive range. Additionally, cash and cash equivalents have shown a steady upward trend.

S\$'m	FY2024	FY2023	YoY (%)
Revenue	2,735.9	3,025.0	(9.6)
Profit before tax	306.6	330.8	(7.3)
PBT Margin (%)	11.2	10.9	
Income tax expense	60.8	60.0	1.3
Effective Tax Rate (%)	19.8	18.2	
Net profit	245.0	270.0	(9.3)
Net Profit Margin (%)	9.0	8.9	
Diluted EPS (cents)	84.4	92.6	(8.9)

continued... [Insiders Are Buying. Is It Time You Look at Venture Corporation Too?]

However, Venture posted 9.6% year-on-year decline in revenue to S\$2.74 billion for FY2024 from S\$3.03 billion in FY2023. The net profit fell 9.3% over the same period from S\$270 million to S\$245 million. Revenue declined due to softer customer demand, but with net profit margin's improvement from 8.9% to 9.0%, it reflects the effectiveness of the Group's long-term business strategy.

Consensus Estimate



Source: ShareInvestor.com

The consensus estimate indicates a mean target price of approximately SGD 12.38, suggesting a potential upside of about 10% from the current price. Analysts are currently assigning a "Hold" rating.

Insider Trades Movement

Buyer / Seller Name [Classification ^a]	Stock Name	Security Types ^b	Effective Change Date (Notice Date)	Acquired / (Disposed)[⁰⁰⁰]			Price	Closing Price(SGD) ^d	No. of Shares After Trade [⁰⁰⁰]				Note
				Direct	Deemed	Total			Direct	Deemed	Total	% Held ^c	
Silchester International Investors LLP [Substantial Shareholder/Unitholder]	Venture	S/U	06 Feb 2025 (07 Feb 2025)		153	153		12.580		26,133	26,133	9.040	
Silchester International Investors LLP [Substantial Shareholder/Unitholder]	Venture	S/U	11 Dec 2024 (12 Dec 2024)		210	210	12.9773	12.960		23,205	23,205	8.030	
Ameriprise Financial, Inc. [Substantial Shareholder/Unitholder]	Venture	S/U	15 Nov 2024 (20 Nov 2024)		280	280		12.790		20,464	20,464	7.075	
Ameriprise Financial, Inc. [Substantial Shareholder/Unitholder]	Venture	S/U	15 Oct 2024 (18 Oct 2024)		(253)	(253)		13.810		20,243	20,243	6.990	
Silchester International Investors LLP [Substantial Shareholder/Unitholder]	Venture	S/U	13 Aug 2024 (15 Aug 2024)		244	244		13.910		20,504	20,504	7.070	
Silchester International Investors LLP [Substantial Shareholder/Unitholder]	Venture	S/U	04 Jul 2024 (08 Jul 2024)		480	480	14.194	14.200		17,453	17,453	6.020	

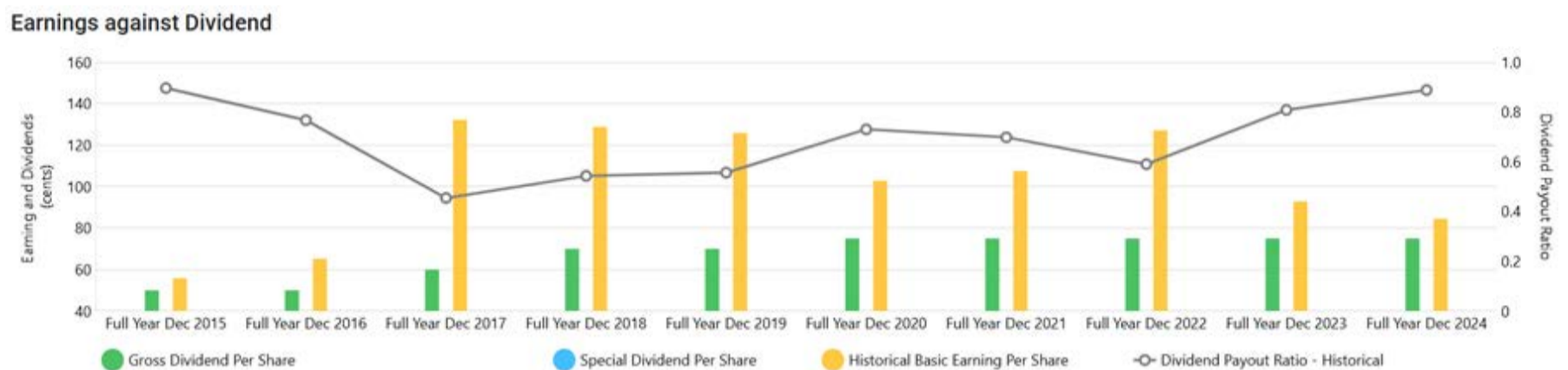
Source: ShareInvestor.com

One notable point is that the company's major shareholder has been steadily increasing its stake in Venture Corporation Limited since July 2024, raising its shareholding from 6.02% to 9.04% within a year.

continued... [Insiders Are Buying. Is It Time You Look at Venture Corporation Too?]

This accumulation occurred during a stock price downtrend, with the share price declining from SGD 14.20 to SGD 12.58.

Dividend Analysis



Source: [ShareInvestor.com](https://www.shareinvestor.com)

Venture Corporation Limited's dividend payout has been quite stable since Year 2018, ranging from SGD 0.70 – SGD 0.75, providing a stable passive income to the investors in the long run.

Growth Drivers

1. Advancing Data Centre and Semiconductor Solutions

Venture is tapping rising demand for hyperscale data centres and faster data interconnectivity to grow its Networking and Communications solutions, while securing new product wins in Test & Measurement Instrumentation for data centre applications. Additionally, the company is expanding its share in the Semiconductor Related Equipment domain, driven by surging AI-driven demand for advanced semiconductor equipment.

2. Innovating in Life Science and Medical Technology

The company is developing next-generation instruments for cell and gene therapy, as well as drug discovery; capitalizing on long-term growth in Life Science and Medical Technology domains. Simultaneously, Venture is creating advanced technology modules for precision control applications in Life Science and Advanced Industrial Technology sectors.

continued... [Insiders Are Buying. Is It Time You Look at Venture Corporation Too?]

3. Navigating Global Manufacturing Challenges

Amid trade tensions and geopolitical shifts, Venture leverages its unique position to help customers mitigate global manufacturing risks, ensuring stability and flexibility in its operations and partnerships.

4. Positive Regional Investment Trends

The Asia-Pacific region, particularly Singapore, benefits from a rebound in venture capital and technology investments in 2025. This favorable environment enables Venture to attract partnerships and expand its manufacturing capabilities, leveraging regional demand for electronics and precision engineering solutions.

Conclusion

Venture Corporation Limited remains a robust player in the global technology services sector, demonstrating resilience amid market challenges while capitalizing on high-growth opportunities. Despite a 9.6% revenue decline to SGD 2.74 billion and a 9.3% net profit drop to SGD 245 million in FY2024 due to softer demand, Venture's stable 9.0% net profit margin, consistent positive cash flow, and steady dividends of SGD 0.70–0.75 since 2018 highlight its financial strength. The company's strategic focus on hyperscale data centres, AI-driven semiconductor equipment, and life sciences, alongside its ability to navigate global manufacturing risks, positions it for sustained growth.

However, although Venture's diversified customer base across life sciences, healthcare, and communications mitigates risks from potential US-China tariffs, but global supply chain shifts, higher component costs, scale back R&D spending and delay projects could indirectly affect company's business. The board's plan to accelerate share buybacks signals confidence in enhancing shareholder value. Supported by a rebound in Asia-Pacific venture capital and growing insider ownership from 6.02% to 9.04%, Venture's commitment

continued... [Insiders Are Buying. Is It Time You Look at Venture Corporation Too?]

to innovation and operational excellence ensures it will continue delivering value in 2025 and beyond.

Disclaimer: This article is for informational purposes only and not intended as investment advice.

SHAREINVESTOR®
An AlphaInvest Company

Ultimate Guide to use ShareInvestor

Watch now!

SHAREINVESTOR®
An AlphaInvest Company

Tired Of Low Returns? Let's Talk High-Paying Dividends!

- ✓ Top Dividend Picks Right Now
- ✓ Insider Tips – Advanced strategies for experienced investors
- ✓ Easy-to-Follow Tutorial

Get the most out of dividends, use our Dividend Analysis function – Click to Watch Our Tutorial Below!

Upgrade Your Dividend Strategy Here



Protect yourself with the ScamShield Suite



ScamShield Helpline
Call to check if something is a scam



ScamShield app
Check, detect and block scams



scamshield.gov.sg
One-stop portal on scams



ScamShield Alert social channels
Receive the latest information on scams

**JUMBO: Posts 1H2025 Profit Of S\$7.6 Million & Declares Interim Dividend Of 0.5 Cent Per Share.**

The Group's revenue increased by 0.3%, or \$0.2 million, from \$97.1 million for 1H2024 to \$97.3 million in 1H2025 mainly contributed by revenue from the Korea operations. Profit attributable to the owners of the Company was \$7.9 million for 1H2025, compared to \$8.9 million in 1H2024. The board of directors of JUMBO has declared a tax exempt (one-tier) interim cash dividend of 0.5 cent per ordinary share of the Company.

[READ MORE](#) **Seatrium: Secures FSRU Conversion Contract From Hoegh Evi, Norway.**

Seatrium Limited has secured a Floating Storage Regasification Unit conversion contract from Höegh Evi, Norway, a pioneering global leader in floating energy infrastructure with one of the world's largest fleets of FSRUs for importing natural gas. The contract covers the conversion and longevity of LNG carrier, Hoegh Gandria to a FSRU which includes the installation of a regasification skid, as well as integration of key supporting systems such as cargo handling, utility, offloading, electrical, and automation systems.

[READ MORE](#) **Rex: Norway & Oman Production Update For April 2025.**

Lime Petroleum AS wishes to announce that for the full month of April 2025, production at the Brage and Yme Fields combined, net to LPA, was 9,442 barrels of oil equivalent per day. Masirah Oil Limited announced that gross production in April 2025 from the Yumna Field in offshore Block 50 Oman, amounted to an average of 1,996 stock tank barrels per day over the 30 days of production period.

[READ MORE](#) **Manulife US REIT: Agrees to Sell Peachtree For US\$133.8 Million To Repay 58% Of 2026 Debts.**

Sale is subject to approval of lenders of MUST and will generate net proceeds of US\$118.8 million. Together with 20% of 2026 debts paid in March 2025, this brings proportion of 2026 debts repaid to 78%. Sale of Peachtree to mitigate risk amidst challenging U.S. market conditions.

[READ MORE](#) **Cordlife: Southeast Asian Stem Cell Leader, Medeze, Launches Voluntary Conditional Cash Partial Offer For 10% Stake In SGX-Listed Cordlife Group.**

Offer price of S\$0.25 per share is at an attractive premium of 61.3% over the last traded price being 9 May 2025 and the 12-month volume-weighted average price. The Partial offer provides Cordlife shareholders an opportunity to exit at a premium. Medeze views this as a strategic opportunity to invest with long-term intent and explore collaborations with Cordlife including promotion of services together for market expansion, products/services development, diversification of business in the region and cost and operational synergies.

[READ MORE](#)



IR Announcements



MTQ: Stronger Gross Profit Margin Lifts Profitability Despite Lower Revenue.

Stronger Gross Profit Margin Lifts Profitability Despite Lower Revenue. Profit After Tax Up 59%, Excluding One-Off Gain from Pandan Property. Pemas Disposal Completed, S\$0.8m Gain to be Recognized in FY2026.

[READ MORE](#) 

Ascott: Boosts Talent Development To Drive The Opening Of More Than 300 New Properties By 2028.

Launches Ascott Accelerate, a structured programme designed to fast-track high potential talent into property leadership roles. Rolls out a new digital learning platform for flexible and accessible development opportunities for associates at all levels.

[READ MORE](#) 



Fraser's Hospitality Trust: Privatisation Of Fraser's Hospitality Trust To Unlock Value For Its Stapled Securityholders.

Proposed privatisation by a wholly-owned subsidiary of FPL, to be implemented by way of a trust scheme of arrangement. The Scheme is the outcome of a strategic review conducted by the FHT Directors. After evaluating various strategic options, the FHT Independent Directors view the privatisation as a viable option for Stapled Securityholders to immediately realise their investment at a premium to NAV and offers strong deal certainty in terms of timing and execution. The Scheme Consideration of S\$0.710 in cash per Scheme Stapled Security represents a 36.3% premium to FHT's VWAP for the 12-month period up to and including the Last Undisturbed Trading Date.

[READ MORE](#) 

EC World REIT: Reported Lower Operating Performance In 1QFY2025.

Lower operating performance year-on-year. Appointed new property managers and port manager to improve operational management. Appeal filed against Fuyang Court's April 2025 Judgements concerning Fuzhou E-Commerce's unauthorised Mortgage.

[READ MORE](#) 



Food Empire: Kicks Off FY2025 With A Strong Start, Achieves 16.3% Topline Growth To US\$136.6 Million In 1Q2025.

Southeast Asia segment takes top spot in revenue contribution for the first time primarily due to a 44.6% surge in sales from Vietnam in 1Q2025. Maintains an optimistic outlook because of the Group's Asia-centric strategy and regional investments in ongoing capacity expansion projects. The Group remains confident that its strong brand equity will provide resilience against the direct impact of tariffs in the geographical segments where the Group operate. The Group does not have any significant exposure to the US market.

[READ MORE](#) 

CSE Global: Interim Business Updates For 1Q2025.

Revenue grew 4.0% year-on-year to S\$205.5 million, primarily driven by the Communications and Automation business segments in the Americas region. Robust order book of S\$616.0 million as at 31 March 2025.

[READ MORE](#) 





IR Announcements



IREIT Global: Pricing Of S\$85 Million 6% Green Notes Due 2028.

IREIT Global has on 13 May 2025 launched and priced S\$85,000,000 in aggregate principal amount its offering of 6.00 per cent. green, senior, and unsecured notes to be issued under the US\$ 1,000,000,000 Multicurrency Debt Issuance Programme. DBS Bank Ltd. has been appointed as sole global coordinator, and DBS Bank Ltd. and CIMB Bank Berhad, Singapore Branch, have been appointed as joint bookrunners to arrange the offering of the Notes.

[READ MORE](#)


United Hampshire US REIT: Continues To Provide Resilient Operational Performance In 1Q 2025.

High committed occupancy for Grocery & Necessity Properties at 97.2%. Long WALE of 7.8 years coupled with strong tenant retention rate of 89%. Minimal lease rollover with only 1.8% and 3.4% expiring in 2025 and 2026 respectively. Self-Storage occupancy remained high at 93.6%. Low net aggregate leverage of 36.8% provides headroom for potential acquisitions and growth initiatives. No refinancing requirements until November 2026.

[READ MORE](#)



Asian Pay Television Trust: Key Financial Information & Business Updates For The Quarter Ended 31 March 2025.

Added c.7,000 net subscribers, lifting total subscriber base to c.1,354,000, driven by Premium digital TV and Broadband. Strong Broadband growth momentum, Subscribers up c.8,000 during the quarter and revenue up not only in NT\$ by 7.8%, but also in S\$ by 4.0% compared to the pcp, despite unfavourable exchange rate movements. Revenue and EBITDA of \$59.4 million and \$33.3 million for the quarter. EBITDA margin at 56.1%. Net debt repayments of \$22 million in the quarter, ahead of the scheduled refinancing. Successfully refinanced Onshore and Offshore facilities in April 2025, reduced total facilities size by 12%.

[READ MORE](#)


Genting SP: 1Q25 Quarterly Business Overview.

The Group reported a revenue of \$626.2 million and Adjusted earnings before interest, tax, depreciation and amortisation of \$235.8 million in the first quarter of 2025, representing a 2% and 5% increase respectively from the fourth quarter of 2024. The gaming business benefited from the Chinese New Year festive season while the non-gaming business experienced softer demand due to the continuous impact of a strong Singapore dollar and ongoing renovation and upgrading works at Resorts World Sentosa as part of the RWS 2.0 transformation project.

[READ MORE](#)



Geo Energy: Delivers A Strong Start In 1Q2025 With Sales Volume Doubling To 3.5 Million Tonnes & Recorded A Net Profit Of US\$14.1 Million, Declares Interim Dividend Of 0.25 SG Cent Per Share.

The Group doubled its sales volume to 3.5 million tonnes in 1Q2025 (1Q2024: 1.8 million tonnes) due to improved coal access in 2025 following the Group's optimisation of its mining plans in 2024. Corresponding to higher sales volume, revenue increased 68% to US\$166.4 million in 1Q2025 (1Q2024: US\$99.0 million) despite lower average selling price of US\$46.98 per tonne in 1Q2025 (1Q2024: US\$54.68 per tonne).

[READ MORE](#)




IR Announcements



Centurion: Reports 13% Revenue Growth To S\$69 Million In 1Q 2025.

The Group's financial performance for 1Q 2025 was driven by positive rental revisions across markets and strong financial occupancies in both Singapore and the UK. Despite ongoing tariff uncertainties, Centurion expects minimal impact on business operations and will continue to monitor developments closely. Strong pipeline of portfolio growth in Singapore, Malaysia and Australia for 2025 and 2026.

[READ MORE](#) 

IREIT Global: Announces The Successful Placement Of Its Inaugural S\$85 Million Green Notes.

Maiden bond issuance was met with robust investor demand, signaling strong confidence in IREIT's prospects and strategy. Net proceeds from the green notes have been earmarked to fund the initial, transformative stage of Project RE:O. Also a significant first step ahead in IREIT's broader financial strategy aimed at reducing the encumbrance of its assets and diversifying its funding sources.

[READ MORE](#) 


LHN: Coliwoo Hotel Kampong Glam Reimagines Tourism With Co-Living Experiences In The Heart Of Arab Street.

LHN Limited, through its co-living subsidiary Coliwoo, expands its footprint in Singapore's co-living hospitality scene with the launch of Coliwoo Hotel Kampong Glam. Launched in May, the hotel reimagines tourism through the lens of co-living, offering a unique blend of flexibility, community, and cultural immersion. As part of its launch, Coliwoo Hotel Kampong Glam is offering complimentary experiential heritage tours, inviting guests to immerse themselves in the rich history and vibrant culture of the neighbourhood.

[READ MORE](#) 

NetLink NBN Trust: Continues Year-On-Year Growth In DPU.

Revenue for FY25 was \$407.0 million, \$4.3 million or 1.0% lower compared to FY24. PAT was \$95.4 million, 7.6% lower compared to FY24. Unitholders will receive a distribution of 2.68 Singapore cents per unit for the six months ended 31 March 2025 on 11 June 2025.

[READ MORE](#) 


Sunpower: GI recurring PATMI Rises 9.3% To Record RMB97.1 Million & GI Recurring Operating Cashflow Rises 27.8% YoY To RMB106.7 Million In 1Q 2025.

Fully redeemed Convertible Bonds with aggregate principal amount of approximately US\$130 million upon maturity, and is in a better position to focus on its corporate growth strategy. Robust performance in 1Q2025 continued to underscore resilience of GI business, bolstered by its superior business model. GI recurring gross profit was RMB227.3 million (+8.8% YoY). GI recurring PATMI was RMB97.1 million (+9.3% YoY). GI recurring operating cashflow was RMB106.7 million (+27.8% YoY). Total steam sales volume rose 4.6% YoY to 2.99 million tons, driven by continuing ramp-up of existing GI projects.

[READ MORE](#) 

IR Announcements

IR ANNOUNCEMENTS



HRnetGroup: Launches EOR Business.

HRnetGroup Limited is pleased to announce the operational launch of Doer Pte Ltd, branded as doudou, a wholly owned subsidiary providing Employer of Record services that enable cross-border employment without the need for local entity setup. Incorporated in Singapore in 2024, doudou has officially launched its first branch in Taipei, with plans to scale across the Group's network of 18 Asian growth cities. It leverages the Group's established expertise in employment, payroll, and compliance to serve as a trusted partner for businesses expanding into new markets.

[READ MORE](#)

LHN: Reports Robust 1H2025 Growth With Revenue Up 29.4% Year-On-Year, Boosted By The Maiden Contribution From The Property Development Segment.

The Group's revenue grew by 29.4%, underpinned by the contribution of revenue from the Property Development Business, Residential Properties (co-living) and Facilities Management Business. Net profit attributable to equity holders rose by 8.8% y-o-y. Declared an interim dividend of 1.0 Singapore cent.



[READ MORE](#)



CosmoSteel: Voluntary Conditional Cash Offer At S\$0.20 Per Offer Share.

Evolve Capital Advisory Private Limited wishes to announce, for and on behalf of 3HA Capital Private Limited, that the Offeror intends to make a voluntary conditional cash offer for all the issued and paid-up ordinary shares in the capital of CosmoSteel Holdings Limited in accordance with Section 139 of the Securities and Futures Act 2001 of Singapore and Rule 15 of the Singapore Code on Take-overs and Mergers.

[READ MORE](#)

EXPERIENCE

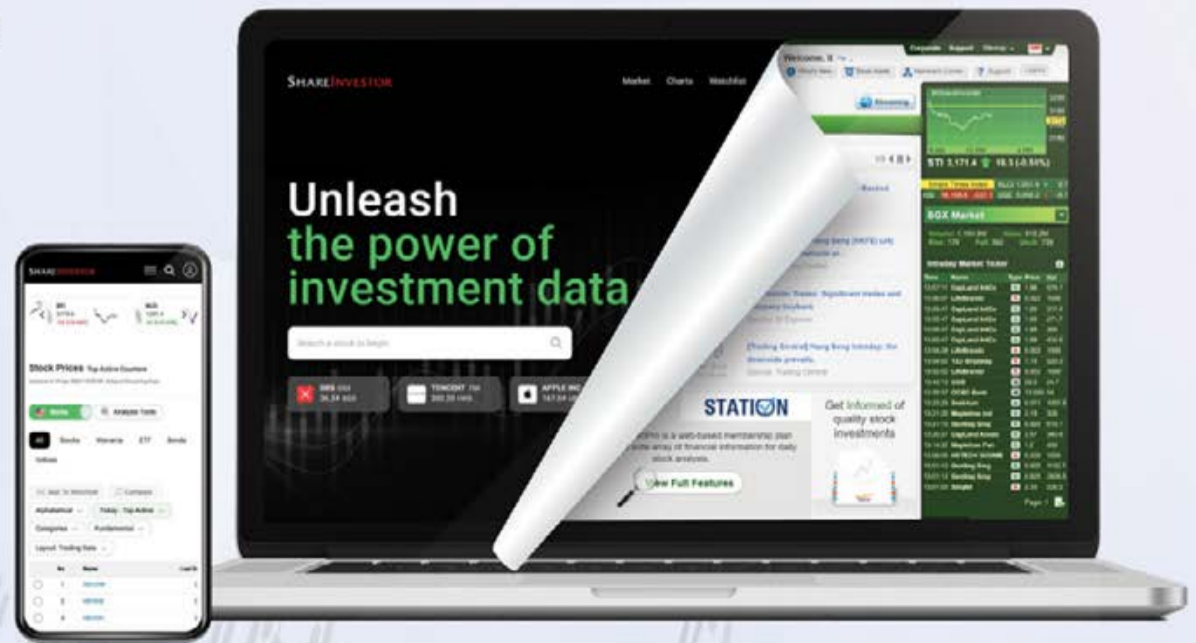
SHAREINVESTOR®
An AlphaInvest Company

The New ShareInvestor Website

Advanced Data Visualizations

Comprehensive Portfolio Feature

Enhanced Look & Feel



Unleash the power of investment data

INVESTMENT BOOKS

CLICK ON BOOK FOR MORE DETAILS

