

Invest

A Weekly e-Publication by SHAREINVESTOR.com

ISSUE

62

20 OCTOBER
2023

Scan or click me



Via email, every Friday

Data &
Investing
Ideas

INVESTOR ACADEMY



See
more on
pages
12-16

BITCOIN: JUST ANOTHER BUBBLE?

Investor-One Portfolio *on pages 17-20*

ALSO

Insider Trades *on page 22*

02 MARKET AT A GLANCE

04 REGIONAL MARKETS

06 DIVIDEND STOCKS

08 GROWTH STOCKS

10 VALUE STOCKS

11 CSR SPECIAL EVENT

12 INVESTOR ACADEMY: BITCOIN: JUST
ANOTHER BUBBLE?

17 INVESTOR-ONE PORTFOLIO

22 INSIDER TRADES

24 IR ANNOUNCEMENTS

25 INVESTMENT BOOKS



SHAREINVESTOR®

Invest with Knowledge



CREDITS SHAREINVESTOR

INVESTOR PLATFORMS

GENERAL MANAGER

Ethan Ho

RESEARCH ANALYST

Vincent Wong

MARKETING & SALES

SALES MANAGER

Nigel Lim

ADMIN

Gillian Ong

Alwin Liow

Dawn Ong

CONTENT

DIRECTOR

Edward Stanislaus

INVESTOR RELATIONS

GROUP MANAGING DIRECTOR

Edward Stanislaus

DIRECTOR

Zhao Yanjing

yanjing.zhao@shareinvestor.com

SENIOR MANAGER

Vivien Ong

vivien.ong@shareinvestor.com

SENIOR QC EXECUTIVE

Poh Lam Huat

lamhuat@shareinvestor.com

SHAREINVESTOR HOLDINGS

BOARD OF DIRECTORS

CHAIRMAN

Patrick Daniel

GROUP CEO

Christopher Lee

GROUP COO

Lim Dau Hee

GROUP CFO

Teo Siew May

GROUP MD

Shanison Lin

SHAREINVESTOR PTE LTD

151 Lorong Chuan #02-02

New Tech Park (Lobby B)

Singapore 556741

T (65) 6958 8000

F (65) 6958 8044

E admin@shareinvestor.com

W www.ShareInvestor.com

Advertise with us

Disclaimer:

The services information and data made available on or accessible via this newsletter including facts, views, advice, analyses, opinions and recommendations of individuals and organisations are for general information purposes only.

It is not intended as investment advice and must not be relied upon as such. ShareInvestor Pte Ltd and its third party information providers are not giving or purporting to give or representing or holding themselves out as giving financial, investment, tax, legal and other professional advice.

Advice from a securities professional is strongly advised.

Market at a Glance

Over 5 trading days as at yesterday

www.shareinvestor.com

market data at your fingertips



ShareInvestor WebPro (www.shareinvestor.com)

Prices > Stock Prices > SGX > click Stocks tab

1. mouse over Ranking > select Top Active > mouse over Column Layout > select Edit Customs > select Name > select Volume > select Last Done Price > Mouse Over Column Layout > select Custom
2. mouse over Ranking > select Top Turnover > mouse over Column Layout > select Edit Customs > select Name > select Last Done Price > select Value > Mouse Over Column Layout > select Custom
3. mouse over Ranking > select Top Gainers (Over 5 Trading Days) > mouse over

Column Layout > select Edit Customs > select Name > select Last Done Price > select 5 Days Change > select 5 Days % Change > Mouse Over Column Layout > select Custom

4. mouse over Ranking > select Top Losers (Over 5 Trading Days)
5. mouse over Ranking > select Top % Gainers (Over 5 Trading Days)
6. mouse over Ranking > select Top % Losers (Over 5 Trading Days)

Singapore Top Actives

(as at yesterday)

Name	Last Done	Volume
Seatrium	0.117	545,946.6
YZJ Shipbldg SGD	1.450	69,661.1
HSI 18800MBeCW231228	0.064	36,350.0
ThaiBev	0.540	30,276.9
Genting Sing	0.830	27,320.6
MarcoPolo Marine	0.048	27,114.2
CapLand Ascendas REIT	2.550	24,433.7
Rex Intl	0.179	22,560.2
YZJ Fin Hldg	0.330	21,023.2
Mapletree Log Tr	1.520	20,934.9

Top Gainers

(over 5 Trading days as at yesterday)

Name	Last Done	5 Days Chg
GLD SG\$	248.470	12.170
SPDR DJIA US\$	338.650	7.850
GLD US\$	180.870	7.350
JD 5xShortUB250127	2.750	1.035
NA21200W 511001	74.000	1.000
BYDElec 5xLongSG231220A	2.290	0.910
Venture 5xShortSG241218	3.270	0.540
JD 5xShortSG240327	1.185	0.430
HSTECH3xShortMA260327US\$	2.280	0.395
LiNing 5xShortUB250321	2.210	0.390

Top Losers

(over 5 Trading days as at yesterday)

Name	Last Done	5 Days Chg
NC22300W 720801	90.000	-17.000
SPDR S&P500 US\$	430.500	-4.500
JMH USD	40.900	-2.020
XT Vietnam US\$	25.820	-1.800
Jardine C&C	28.790	-1.700
YZJ 5xLongSG231115	1.180	-1.080
NIO Inc. USD OV	7.820	-0.980
Sunny 5xShortUB250127	0.310	-0.890
XT MSINDO US\$	15.030	-0.730
Venture	11.690	-0.650

Singapore Top Turnover

(as at yesterday)

Name	Last Done	Value
UOB	27.880	145,048,321
DBS	33.170	112,765,103
YZJ Shipbldg SGD	1.450	101,205,500
SIA	6.050	68,734,002
Seatrium	0.117	64,388,901
CapLand Ascendas REIT	2.550	62,418,387
OCBC Bank	12.830	47,215,213
Singtel	2.360	38,833,905
Mapletree Log Tr	1.520	31,645,893
CapLand IntCom T	1.760	31,312,786

Top % Gainers

(over 5 Trading days as at yesterday)

Name	Last Done	5 Days % Chg
WuxiBio 5xLongSG240205	0.015	150.00
HSI 21000MBeCW231030	0.002	100.00
XIAOMI MBeCW231204	0.040	73.91
Kuaisho 5xShortSG231220	0.168	69.70
BYDElec 5xLongSG231220A	2.290	65.94
Vallianz	0.048	65.52
JD 5xShortUB250127	2.750	60.35
HSTECH 5xShortSG240327	0.030	57.89
JD 5xShortSG240327	1.185	56.95
TencentMBePW231204	0.050	56.25

Top % Losers

(over 5 Trading days as at yesterday)

Name	Last Done	5 Days % Chg
HSI 19400MBeCW231030	0.001	-91.67
HSI 18600MBeCW231030	0.006	-84.62
HSI 20200MBeCW231030	0.001	-80.00
Sunny 5xShortUB250127	0.310	-74.17
XPeng 5xLongSG250306	0.160	-71.17
JD 5xLongSG250116	0.044	-70.86
JD 5xLongSG240416	0.025	-70.24
JD 5xLongUB250630	0.116	-69.87
Baidu 5xLongSG241126	0.128	-66.75
HSI 20800MBeCW231129	0.008	-66.67

Disclaimer: The information on this page is provided as a service to readers. It does not constitute financial advice and/or any investment recommendations. Past performance is not indicative of future results. We assume no liability for damages resulting from or arising out of the use of such information. It would be best if you did your own research to make your personal investment decisions wisely or consult a licenced investment advisor.

MARKET AT A GLANCE

Common
Indicators

Uncommon
Profits



UNLOCKING
The Secrets To
INDICATORS

FULL-DAY WORKSHOP



28 Oct 2023 (Saturday)
9am - 5pm



CK Ee

Chief Trainer of Asia Charts



Regional Markets

Over 5 trading days



ShareInvestor WebPro (www.shareinvestor.com)

1. Price > Stock prices
2. select Market: Bursa / HKEX / NYSE / NASDAQ (one bourse at a time)
3. select Stocks Tab
4. select Ranking Top Gainers or Top Losers (Over 5 Trading Days)
5. Mouse over Column Layout > select Edit Customs > select Name > select Last Done Price > select 5 Days Change > select 52 Weeks High > select 52 Weeks Low > Mouse Over Column Layout > select Custom

REGIONAL MARKETS

BURSA (RM)

Top Gainers

Name	Last Done	5 Days Change	52 Weeks High	52 Weeks Low
NESTLE	127.500	4.900	140.600	121.700
F&N	26.700	1.340	27.900	19.700
RAPID	25.880	0.600	26.500	13.700
KLK	22.400	0.520	23.940	20.500
UTDPLT	16.940	0.460	17.460	13.786

Top Losers

Name	Last Done	5 Days Change	52 Weeks High	52 Weeks Low
AEONCR	11.420	-0.780	13.500	10.880
IHS046000824	100.800	-0.500	102.500	97.900
HEIM	24.120	-0.420	30.000	22.740
HLCAP	4.900	-0.390	6.650	5.110
APOLLO	5.110	-0.300	5.550	3.600

HONG KONG (HKD)

Top Gainers

Name	Last Done	5 Days Change	52 Weeks High	52 Weeks Low
SPDR GOLD TRUST GOLD SHARES NPV	1,415.500	60.500	1,498.000	1,183.000
MIRAE ASSET GBL INVMTS (HK)LTD GLOBAL X ASIA USD INVT BOND ETF (HKD)	54.100	35.500	54.760	54.460
CHINA INTL CAP CORP HK ASSET MGMT ICBC CICC USD MONEY MARKET ETF	8,549.400	18.750	8,547.600	8,115.350
BOSERA ASSET MGT (INTL) CO LTD USD MON- EY MARKET ETF HKD	7,920.050	11.250	7,920.050	7,811.050
BYD COMPANY LIMITED	248.000	6.800	280.600	161.700

Top Losers

Name	Last Done	5 Days Change	52 Weeks High	52 Weeks Low
BAIDU INC	107.700	-22.600	166.300	73.700
BAIDU INC	100.800	-21.200	143.000	106.300
YUM CHINA HOLDINGS INC	409.200	-21.000	514.500	300.000
JD.COM INC	97.200	-19.900	258.600	102.100
TENCENT HOLDINGS LIMITED	291.200	-19.800	416.600	188.213

NYSE (USD)

Top Gainers

Name	Last Done	5 Days Change	52 Weeks High	52 Weeks Low
TEXAS PACIFIC LAND CORPORATION	1,978.320	115.350	2,739.000	1,266.210
AUTOZONE INC	2,629.400	67.750	2,750.000	2,249.360
CHIPOTLE MEXICAN GRILL	1,840.730	47.050	2,175.010	1,344.050
BOSTON BEER CO INC	370.290	30.400	422.750	296.270
WHITE MOUNTAINS INSURANCE GROUP	1,529.380	29.090	1,617.000	1,276.050

Top Losers

Name	Last Done	5 Days Change	52 Weeks High	52 Weeks Low
BERKSHIRE HATHAWAY INC	518,145.000	-6,372.000	566,569.970	410,112.240
NVR INC	5,746.590	-149.630	6,525.000	3,935.000
BIO RAD LABORATORIES INC	314.000	-32.690	509.623	309.020
METTLER-TOLEDO INTERNATIONAL INC	1,010.000	-31.810	1,615.970	1,009.280
WELLS FARGO & COMPANY 7.5% PERP CONV PRF CLS A SERIES L	1,050.250	-29.750	1,275.000	1,050.000

NASDAQ (USD)

Top Gainers

Name	Last Done	5 Days Change	52 Weeks High	52 Weeks Low
LULULEMON ATHLETICA INC	405.610	31.670	419.860	286.575
SHOCKWAVE MEDICAL INC	206.700	21.870	320.540	172.500
INSULET CORPORATION	144.870	17.100	335.910	125.820
COOPER COS INC	326.850	16.100	333.190	305.350
CELSIUS HOLDINGS INC	172.060	13.300	206.850	78.248

Top Losers

Name	Last Done	5 Days Change	52 Weeks High	52 Weeks Low
BOOKING HOLDINGS INC	2,850.240	-198.760	3,251.709	1,750.480
NVIDIA CORP	421.960	-47.490	502.660	116.180
MIND TECHNOLOGY INC	4.350	-42.820	81.000	4.120
ATRION CORP	369.000	-36.920	705.740	394.560
ASML HOLDING NV EURO.09 NY REGISTRY SHS 2012	583.250	-33.510	771.980	393.190



SHAREINVESTOR WEBPRO

STOCK MARKET DATA AT YOUR FINGERTIPS

Powerful browser-based market analytics platform.
Access from anywhere

8 Markets Data

- ▶ Get access to data from Bursa, NYSE, Nasdaq, HKEX, SGX, IDX, SET & ASX

Portfolio Management

- ▶ Profit & Loss Summary
- ▶ Stock Alert
- ▶ News & Events filtering
- ▶ Customizable column layout

Fundamental Analysis

Financial Analysis Statement

- ▶ Profit & Loss
- ▶ Balance Sheet
- ▶ Cash Flow Statement
- ▶ More than 20 Financial Ratios
- ▶ Dividend Analysis

Technical Charting

- ▶ C² chart (Customisable & Comprehensive)

Brokers' Call

Intrinsic Value Calculator

FactSheet

- ▶ Key Stock Information
- ▶ Ownership
- ▶ Consensus Estimates
- ▶ Annual Report
- ▶ Historical Price
- ▶ Insider Trades

What's new on WebPro (Stable Release 12.1.0)

In our effort to keep our platform at the forefront of trading technology, we have added on some new features onto our C2 Chart in WebPro

ADDITIONAL NEW FEATURES:

- ▶ Anchor selector for AVWAP, PVAT, and PAV indicators
- ▶ Volume profile indicator by date range
- ▶ Moving Average Cross indicator
- ▶ Guppy Multiple Moving Average (GMMA) indicator
- ▶ GoNoGo Trend Signal indicators
- ▶ SignalIQ

So what are you waiting for? Head to our platform today and check out our new trading chart features and indicators. We're confident that you'll love the improvements we've made and that they'll help you become a more successful trader.

Click here to start your 9 days FREE trial



Dividend Stocks

Price & Total Shareholder Return (as at yesterday)



DEFINITION Company is paying out dividend with low or moderate leverage.

CHART GUIDE Total Shareholder Return (TSR) combines share price appreciation and distributions paid to show the total return to the shareholder expressed as a percentage.



ShareInvestor WebPro > Screener > Market Screener (FA & TA) > select SGX > add criteria

A. Criteria

- > click Add Criteria
- Fundamental Analysis Conditions tab >select (i) Dividend Yield
- Fundamental Analysis Conditions tab >select (ii) Dividend Payout (Historical)
- Fundamental Analysis Conditions tab >select (iii) Total Debt To Equity
- Fundamental Analysis Conditions tab >select (iv) Total Shareholder Returns

- Fundamental Analysis Conditions tab >select (v) Total Shareholder Returns
- Fundamental Analysis Conditions tab / >select (vi) CAGR of Dividend Per Share
- Fundamental Analysis Conditions tab >select (vii) CAGR of Dividend Per Share

B. Conditions (Criteria Filters)

1. Dividend Yield - select (more than) type (1) % for the past select (1) financial year(s)
2. Dividend Payout (Historical) - select (between) type (0.5) to type (1) times for the past select (1) financial year(s)
3. Total Debt to Equity – select (less than) type (1) for the past select (1) financial year(s)
4. Total Shareholder Return – select (more than) type (5) % for the past select (3) financial year(s)
5. Total Shareholder Return – select (more than) type (5) % for the past select (5) financial year(s)

6. CAGR of Dividend Per Share – select (less than) type (30) % for the past select (5) financial year(s)
 7. CAGR of Dividend Per Share – select (more than) type (1) % for the past select (5) financial year(s)
- > click Save Template > Create New Template type (Dividend Companies) > click Create
 - > click Save Template as > select Dividend Companies > click Save
 - > click Screen Now (may take a few minutes)
 - > Sort By: Select (Dividend Yield) Select (Desc)
 - > Mouse over stock name > Factsheet > looking for Total Shareholder Return



New Toyo Int Hldgs Ltd. (NO8.SI)

ANALYSIS



Period	Dividend Received	Capital Appreciation	Total Shareholder Return	
Short Term Return	5 Days	-	-2.58%	
	10 Days	-	-4.84%	
	20 Days	0.009	-0.82%	-4.89%
Medium Term Return	3 Months	0.009	-0.20%	+1.26%
	6 Months	0.019	-0.11%	+1.26%
	1 Year	0.019	+0.05%	+1.50%
Long Term Return	2 Years	0.030	-0.30%	+1.47%
	3 Years	0.051	-	+2.88%
	5 Years	0.075	-0.33%	+16.67%
Annualised Return	Annualised	-	-	+3.13%



YHI International Limited (BPF.SI)

ANALYSIS

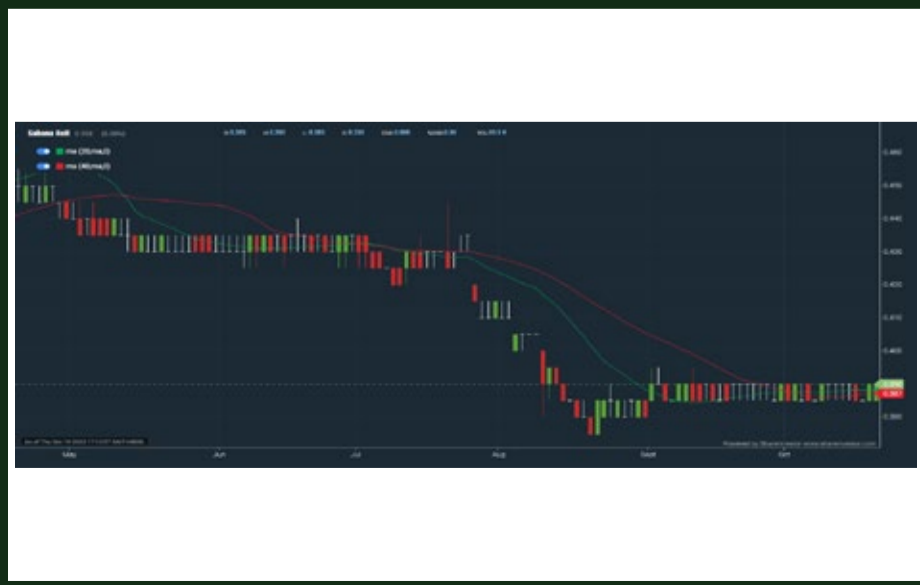


Period	Dividend Received	Capital Appreciation	Total Shareholder Return	
Short Term Return	5 Days	-	+1.05%	
	10 Days	-	+2.13%	
	20 Days	-	+3.20%	
Medium Term Return	3 Months	-	-	
	6 Months	0.026	-0.34%	-0.77%
	1 Year	0.026	-	+7.50%
Long Term Return	2 Years	0.072	-0.32%	+9.40%
	3 Years	0.105	+0.13%	+3.55%
	5 Years	0.151	-0.07%	+3.30%
Annualised Return	Annualised	-	-	+3.01%



Sabana Industrial Reit (M1GU.SI)

ANALYSIS



Period	Dividend Received	Capital Appreciation	Total Shareholder Return	
Short Term Return	5 Days	-	-	
	10 Days	-	-0.85%	+1.30%
	20 Days	-	-	-
Medium Term Return	3 Months	0.016	-0.44%	-5.98%
	6 Months	0.016	-0.60%	-5.75%
	1 Year	0.031	-0.15%	+3.95%
Long Term Return	2 Years	0.062	-0.45%	+3.95%
	3 Years	0.100	+0.05%	+26.63%
	5 Years	0.149	-0.33%	+28.33%
Annualised Return	Annualised	-	-	+5.92%

MAKE BETTER TRADING STRATEGIES with SHARE INVESTOR STATION



8 Markets Data

- ▶ Get access to data from Bursa, NYSE, Nasdaq, HKEX, SGX, IDX, SET & ASX

Dynamic Chart

- ▶ Candlestick Pattern Recognition
- ▶ 111 Indicators
- ▶ 39 Drawing Tools
- ▶ Performance Comparison Chart

Intraday Data

- ▶ Market Depth
- ▶ Trade Summary Matrix & Chart
- ▶ Times & Sales
- ▶ Intraday Market Ticker

Market Screener

- ▶ 96 criteria ranging from FA, TA, Consensus Estimate
- ▶ Real-time Data

Power Frame

- ▶ Combining few Dynamic Charts together with intraday information in one frame

Technical Analysis

Fundamental Analysis

Financial Analysis Statement

- ▶ Profit & Loss
- ▶ Balance Sheet
- ▶ Cash Flow Statement
- ▶ More than 20 Financial Ratios
- ▶ Dividend Analysis

FactSheet

- ▶ Key Stock Information
- ▶ Ownership
- ▶ Consensus Estimates
- ▶ Annual Report
- ▶ Historical Price
- ▶ Insider Trades

Start your 18 days
FREE trial now
(Valued at SGD\$52.40)





DEFINITION Company revenue is growing and making good quality of earnings with positive Free Cash Flow.

CHART GUIDE Total Shareholder Return (TSR) combines share price appreciation and distributions paid to show the total return to the shareholder expressed as a percentage.



ShareInvestor WebPro > Screener > Market Screener (FA & TA) > select SGX > add criteria

A. Criteria

1. Fundamental Analysis Conditions tab >select (i) Free Cash Flow, (ii) Revenue Growth, (iii) Gross Profit (Earnings) Margin, (iv) Quality of Earnings, (v) Total Shareholder Returns, > click Add Criteria
2. Fundamental Analysis Conditions tab >select (vi) Total Shareholder Returns > click Add Criteria

B. Conditions (Criteria Filters)

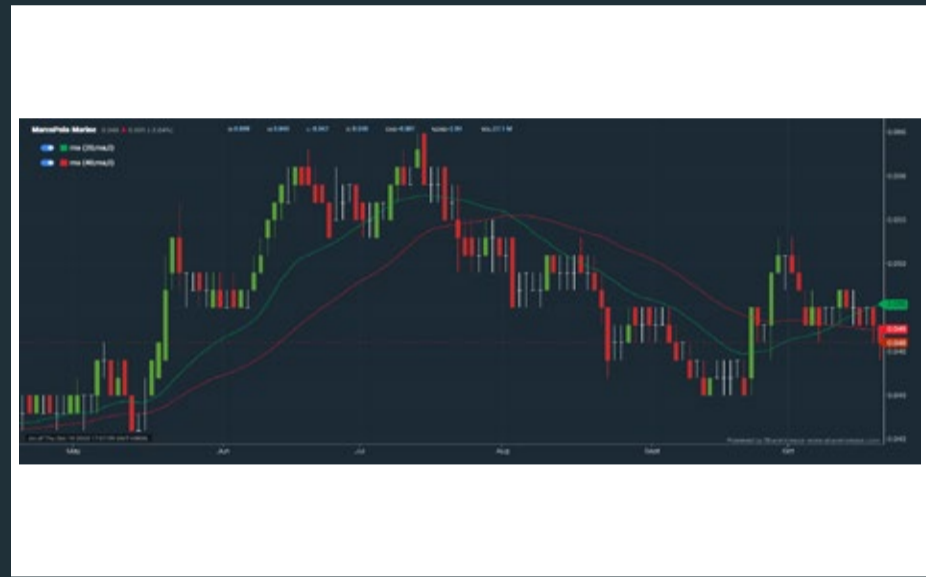
1. Free Cash Flow – select (more than) type (1) for the past select (1) financial year(s)
 2. Revenue Growth – select (more than) type (1) for the past select (1) financial year(s)
 3. Gross Profit (Earnings) Margin - select (more than) type (30) % for the past select (1) financial year(s)
 4. Quality of Earnings – select (more than) type (1) for the past select (1) financial year(s)
 5. Total Shareholder Return – select (more than) type (5) % for the past select (3) financial year(s)
 6. Total Shareholder Return – select (more than) type (5) % for the past select (5) financial year(s)
- > click Save Template > Create New Template type (Growth Companies) > click Create

- > click Save Template as > select Growth Companies > click Save
- > click Screen Now (may take a few minutes)
- > Sort By: Select (Revenue Growth) Select (Desc)
- > Mouse over stock name > Factsheet > looking for Total Shareholder Return



MarcoPolo Marine Ltd. (5LY.SI)

ANALYSIS



Period	Dividend Received	Capital Appreciation	Total Shareholder Return
Short Term Return	5 Days	-0.003	-0.88%
	10 Days	-0.001	-2.04%
	20 Days	-0.001	-2.53%
Medium Term Return	3 Months	-0.007	-12.73%
	6 Months	-0.004	-9.00%
	1 Year	-0.012	-33.33%
Long Term Return	2 Years	-0.016	-45.52%
	3 Years	-0.035	-209.23%
	5 Years	-0.024	-150.09%
Annualised Return	Annualised	-	-14.87%



Grand Banks Yachts Limited (G50.SI)

ANALYSIS

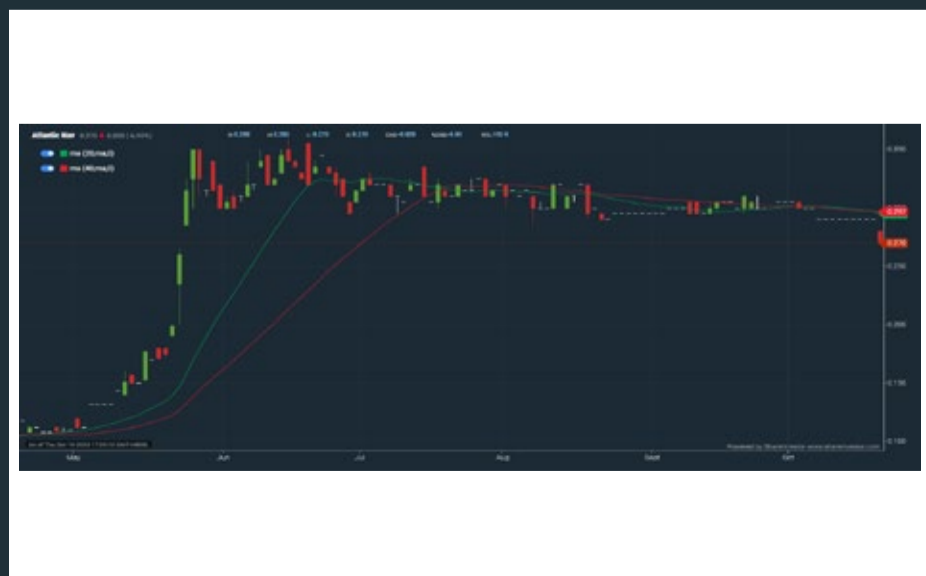


Period	Dividend Received	Capital Appreciation	Total Shareholder Return
Short Term Return	5 Days	-0.005	+1.01%
	10 Days	-0.005	+1.01%
	20 Days	-0.005	+1.01%
Medium Term Return	3 Months	-0.010	-3.00%
	6 Months	-0.015	-6.00%
	1 Year	0.005	+0.54%
Long Term Return	2 Years	0.010	+3.33%
	3 Years	0.010	+0.50%
	5 Years	0.015	+0.00%
Annualised Return	Annualised	-	+1.00%



Atlantic Navigation Hldg(S) Ltd (5UL.SI)

ANALYSIS

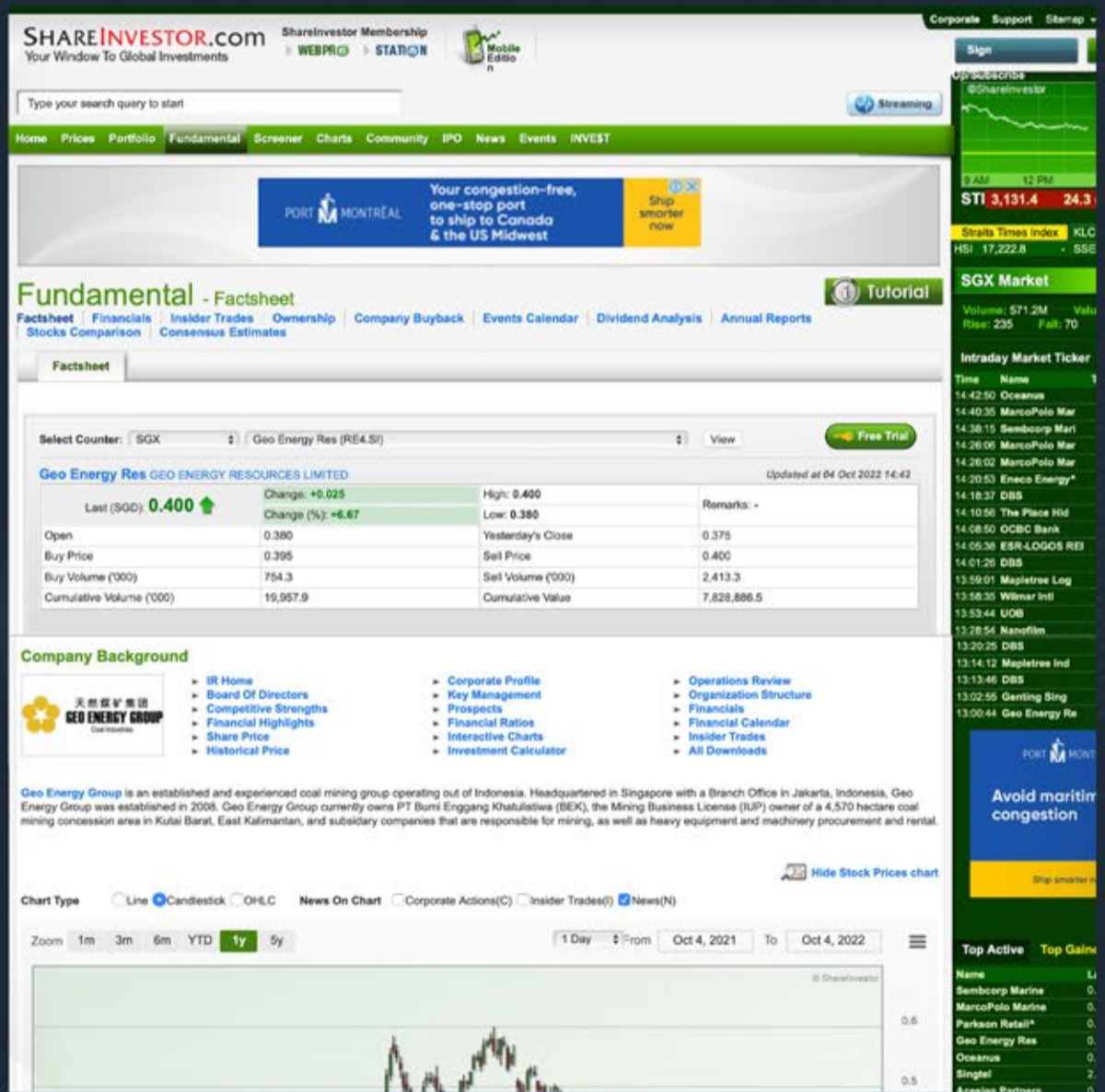


Period	Dividend Received	Capital Appreciation	Total Shareholder Return
Short Term Return	5 Days	-0.020	-8.00%
	10 Days	-0.030	-10.00%
	20 Days	-0.030	-10.00%
Medium Term Return	3 Months	-0.040	-12.90%
	6 Months	-0.152	+125.01%
	1 Year	-0.191	+211.77%
Long Term Return	2 Years	-0.225	+501.00%
	3 Years	-0.221	+502.31%
	5 Years	-0.140	+107.09%
Annualised Return	Annualised	-	+15.74%

COMPANY ANALYSIS AT YOUR FINGERTIPS

Click the Analysis buttons to access the Factsheets of any company featured on the Hot Stocks (TA), Momentum-Up (TA), Up-Trending (TA), Dividend (FA), Growth (FA) & Value (FA) Stocks pages.

Invest with knowledge



- Company Background
- Candlestick Chart
- Current Price
- Key Statistics
- Peer Comparison
- Total Shareholder Returns
- Price Movements
- IPO performance
- Financial Reports
- Historical Price Data
- Latest News
- More



Value Stocks

Price & Total Shareholder Return (as at yesterday)



VALUE STOCKS

DEFINITION Share price of a company trading at a lower price as compared to its fundamentals (FA) such as financial performance and dividend, allowing it to be attractive to value investors.
CHART GUIDE Total Shareholder Return (TSR) combines share price appreciation and dividend distributions paid to show the total return to the shareholder expressed as a percentage.



ShareInvestor WebPro > Screener > Market Screener (FA & TA) > select SGX > add criteria

A. Criteria
 > click Add Criteria

- Fundamental Analysis Conditions tab (i) Price Earnings Ratio
- Fundamental Analysis Conditions tab >select (ii) CAGR of Net Earnings
- Fundamental Analysis Conditions tab >select (iii) Net Debt To Equity
- Fundamental Analysis Conditions tab >select (iv) Return On Equity (ROE)

B. Conditions

1. Price Earnings Ratio – select (less than) type (15) times now
2. CAGR of Net Earnings – select (more than) type (10) % for the past type (3) financial year(s)
3. Net Debt To Equity – select (less than) type (1) for the past select (1) financial year(s)
4. Return On Equity (ROE) – select (more than) type (10) % for the past select (1) financial year(s)

- > click Save Template > Create New Template type (Value Stock) > click Create
- > click Save Template as > select Value Companies > click Save
- > click Screen Now (may take a few minutes)
- > Mouse over stock name > Factsheet > looking for Total Shareholder Return
- > Mouse over stock name > Charts > click C2 Charts tab



China Intl Hldgs Ltd. (BEH.SI)

ANALYSIS



Period	Dividend Received	Capital Appreciation	Total Shareholder Return
Short Term Return	5 Days	-	+0.022
	10 Days	-	+0.027
	20 Days	-	+0.026
Medium Term Return	3 Months	-	+0.007
	6 Months	0.810	+0.016
Long Term Return	1 Year	0.810	+0.003
	2 Years	0.810	-0.221
	3 Years	0.840	-0.192
Annualised Return	5 Years	0.840	-0.100
	Annualised	-	-



Samudera Shipping Line Ltd. (S56.SI)

ANALYSIS



Period	Dividend Received	Capital Appreciation	Total Shareholder Return
Short Term Return	5 Days	-	-0.005
	10 Days	-	-0.005
	20 Days	-	-0.030
Medium Term Return	3 Months	0.020	-0.245
	6 Months	0.270	-0.436
Long Term Return	1 Year	0.270	+0.011
	2 Years	0.475	+0.262
	3 Years	0.485	+0.014
Annualised Return	5 Years	0.508	+0.010
	Annualised	-	-



Huating Global Limited (41B.SI)

ANALYSIS



Period	Dividend Received	Capital Appreciation	Total Shareholder Return
Short Term Return	5 Days	-	+0.010
	10 Days	-	+0.008
	20 Days	-	+0.007
Medium Term Return	3 Months	0.803	-0.036
	6 Months	0.800	+0.841
Long Term Return	1 Year	0.800	+0.802
	2 Years	0.811	+0.821
	3 Years	0.811	+0.843
Annualised Return	5 Years	0.811	+0.820
	Annualised	-	-

CSR SPECIAL EVENT

ONERHT Foundation raises over S\$400,000 at charity golf event

ONERHT Foundation Ltd, the corporate social responsibility arm of RHTLaw Asia LLP and the RHT Group of Companies, successfully raised more than S\$400,000 for disadvantaged groups with the support of generous donors and sponsors at the Foundation's Charity Golf 2023 event.



Group photo of participants before the start

More than 170 golfers participated in the charity golf event held at Sentosa Golf Club's Tanjong Course. The event culminated with a gala dinner attended by Guest-of-Honour, Minister for Trade and Industry Mr Gan Kim Yong, and more than 200 guests.

The Foundation, a registered charity and grant-making philanthropic organisation, collaborates with charitable organisations to support meaningful programmes that address various community needs in Singapore. Funds raised from this year's charity golf event will provide crucial support to a range of beneficiaries.

Since its inception in 2015, the Foundation has raised close to S\$5 million with the support of its donors and sponsors for more than 30 charitable organisations.



(From L to R): Azman Jaafar, Managing Partner of RHTLaw Asia, Erwan Barre, Board Director of ONERHT Foundation, Kaylee Kwok, Chairman of ONERHT Foundation, Guest-of-Honour Gan Kim Yong, Minister for Trade and Industry, Ho Peng Kee, Patron of ONERHT Foundation, and Bernard Tay, Jayaprakash Jagateesan, Yang Eu Jin, Board Directors of ONERHT Foundation.

INVESTOR ACADEMY

Bitcoin: Just Another Bubble?

Vincent Wong, Investor-One / Mon, Oct 16, 8:00 PM



“
“probably rat poison squared.”
Warren Buffett

Back in April 2022, when he made this comment during a shareholder meeting, Bitcoin was hovering around the \$40,000 mark. Its value has since declined to about \$27,000. Considering that Berkshire's stock has been doing quite well since then, it seems that the oracle got it quite right.

On the other hand, in 2017, back then when I was still working as a chef in a kitchen, Bitcoin made headlines by crossing the US\$10,000 milestone, I

continued on next page...

continued... [Bitcoin: Just Another Bubble?]

expressed my reservations about the hype [here in InvestingNote](#). Unlike the oracle, the bitcoin price soared. However, observing Bitcoin's roller-coaster trajectory over the years, my reservations haven't diminished.

Many Bitcoin advocates view it as a safeguarded asset, immune to governmental oversight, highlighting its limited supply and decentralized nature as a buffer against inflation and government control. Yet, it's worth noting that the gold standard, which was foundational to many economies, was eventually discarded for good reasons.

A viable currency typically fulfills two main roles: a store of value and a medium of exchange. To be a functional currency, it must seamlessly integrate into daily transactions, be widely accepted, and maintain a relatively stable value to gain the faith of the owners. We must dissect both roles to truly understand cryptocurrencies like Bitcoin's potential and limitations.

Read Also: [The Resurgence of the Oil & Gas Sector: A Deep Dive into the Supercycle](#)

I. Store of wealth

Many argue that Bitcoin is akin to digital gold.

The limitations of the gold standard are evident when we consider the dynamics of innovation and investment. For instance, if we were strictly on the gold standard, investors might be less inclined to take risks, because it is limited in supply and will only increase in value as the GDP expands and more assets are created.

And there's a reason we have amazing products like smartphones or life-saving medicines. They are products of Capitalism whether you like the fact or not. They are possible only because people once believed that the investments made for these innovative companies are more valuable than the cash they hold.

Why would anyone risk their capital on ambitious ventures when they could simply hoard gold (or Bitcoin) and watch its value appreciate as others take risks and work hard to create? Such a system could stifle innovation,

continued on next page...

continued... [Bitcoin: Just Another Bubble?]

making it challenging for startups to secure funding and potentially leading to economic stagnation.

Institutional investors, the very ones who fueled Bitcoin's latest meteoric rise, have been singing praises of its scarcity as the ultimate shield against inflation. Yet, for all their confidence, 2022 and 2023 thus far have painted a different picture. Rather than being the intended hedge, Bitcoin seems to dance more to the whims of market sentiment, being more volatile and destructive than inflation itself. A little twist in the tale, perhaps?

II. Transaction

“

"I think Bitcoin has succeeded on the level of a new currency, but the payment system is somewhat lacking. It's very hard to use, and that's the big challenge on the Bitcoin side."

Peter Thiel

On the flip side, even fanatic Bitcoin enthusiast like Peter Thiel seems to admit that using it for transactions isn't exactly easy, here are the four main reasons in my opinion:

- **Transaction Speed:** The Bitcoin network can handle a limited number of transactions per second. This limitation can lead to delays, especially during peak times.
- **Transaction Fees:** As the network becomes congested, transaction fees can skyrocket, making small transactions uneconomical.
- **Volatility:** Bitcoin's price is known for its volatility. This can be problematic for merchants who might receive a payment that could drastically drop in value within a short time.
- **Irreversibility:** Unlike credit card chargebacks, once a Bitcoin transaction is confirmed, it cannot be reversed. This can be problematic in cases of mistakes or fraud.

Read Also: [Investment Insight: An Undervalued Gem or Value Trap? Analyzing the possible alternative to REITs](#)

continued on next page...

continued... [Bitcoin: Just Another Bubble?]

Crimes

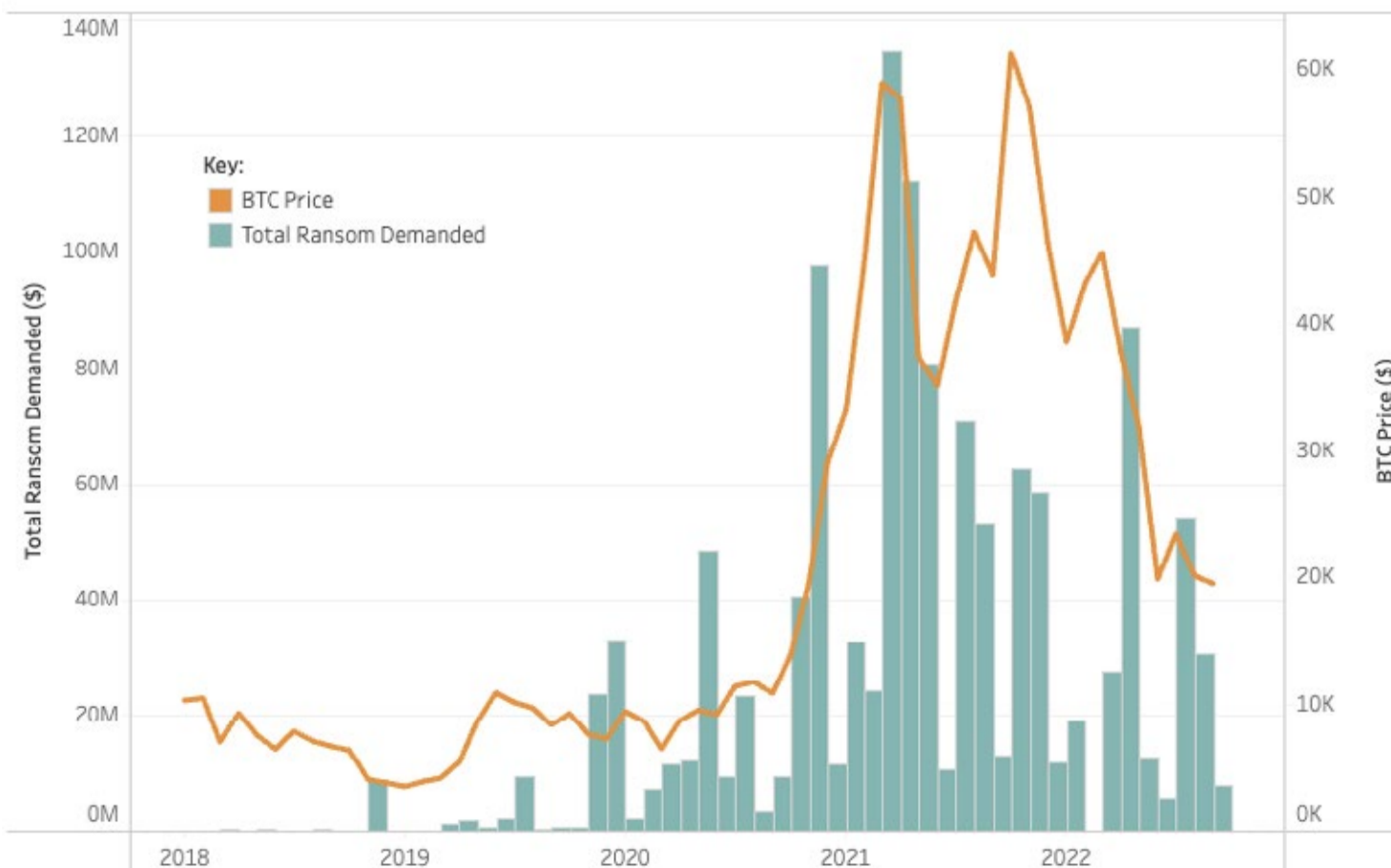
“
"I felt a sense of relief that I didn't have to lie anymore,"
Caroline Ellison

At Sam Bankman-Fried's fraud trial, Caroline Ellison, his trusted confidant, took the stand on the 11th of October. She testified against Sam Bankman-Fried and confessed her role in aiding him in siphoning off billions of dollars from FTX customers.

The illusion of absolute safety evaporates when one realizes that even without governmental oversight, digital assets can still be exploited by the very platforms designed to facilitate their trade. The dangers extend beyond mere platform manipulation, as the crypto realm is plagued by the ever-present threat of hacking. In the year 2023 alone, a staggering \$1.89 billion was lost to a total of 297 crypto hack attacks.

On the other hand, due to its decentralized and anonymous features, Bitcoin is favored by hackers and scammers globally. While officials are getting better at following Bitcoin transactions, likely for taxes, catching the actual cyber criminals remains tough. According to data compiled by Comparitech, Bitcoin prices are highly correlated with the number of ransomware attacks and the total amount demanded.

Bitcoin Price vs. Total Ransom Demanded (\$)

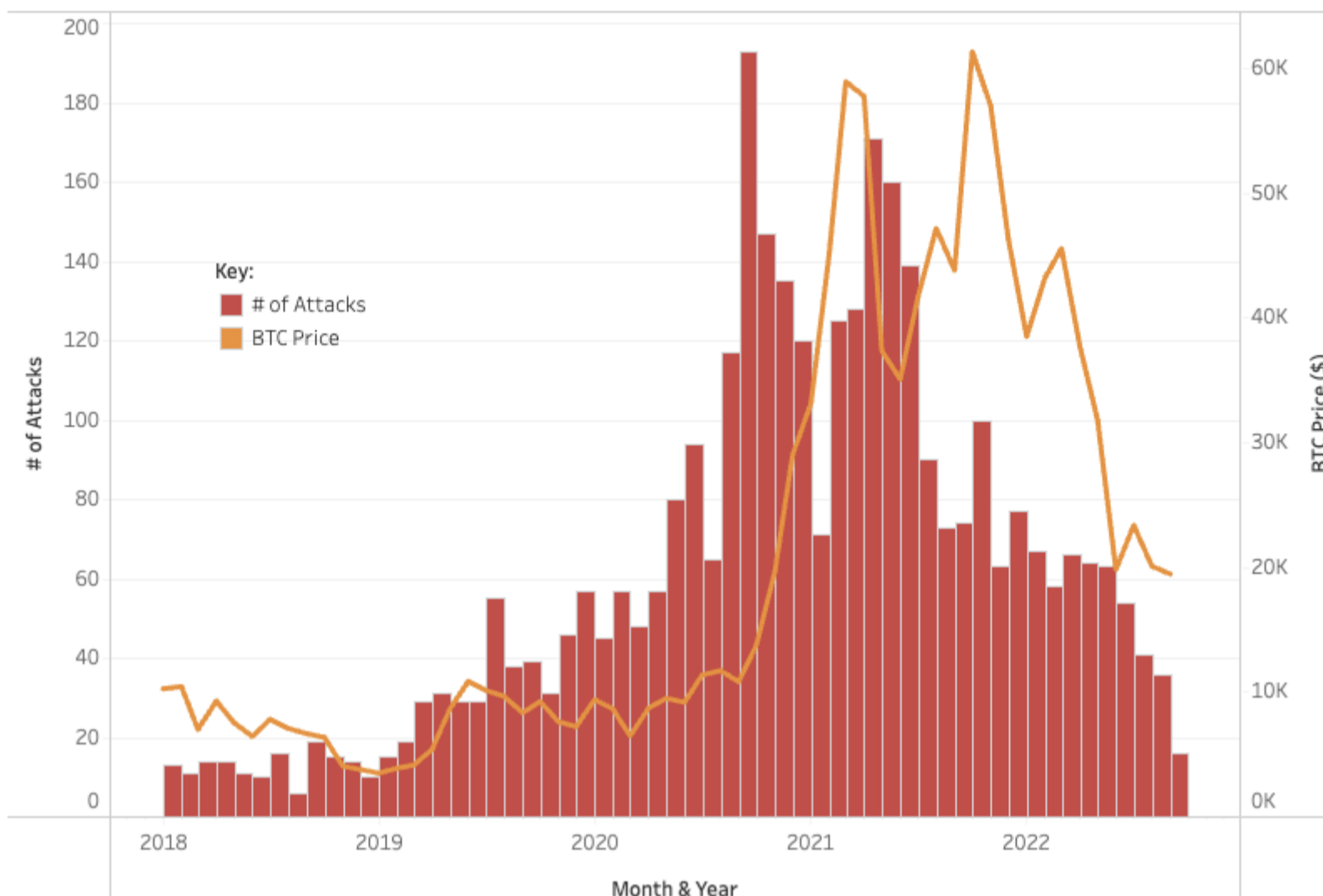


continued on next page...

continued... [Bitcoin: Just Another Bubble?]

It seems like Bitcoin isn't just for buying your virtual gold; it's also the darling of the dark web. The cryptocurrency might offer some sort of benefit; but does the end justify the not-so-apparent end?

Bitcoin Price vs. # of Ransomware Attacks



Lastly...

Speaking of Peter Thiel whom we mentioned earlier. Last year, with Bitcoin hovering around \$43,000, he gave quite a speech in Miami.

He unveiled an "enemies list," with Warren Buffett crowned as the "Sociopathic Grandpa" at the top. Following closely were JPMorgan Chase's Jamie Dimon and BlackRock's Larry Fink. Their shared "crime"? Not owning Bitcoin.

Yet, in a twist of irony, the Financial Times spilled that Thiel's VC firm, Founders Fund, cashed out its entire Bitcoin stash right before the May market tumble - and before Thiel's dramatic list was revealed.

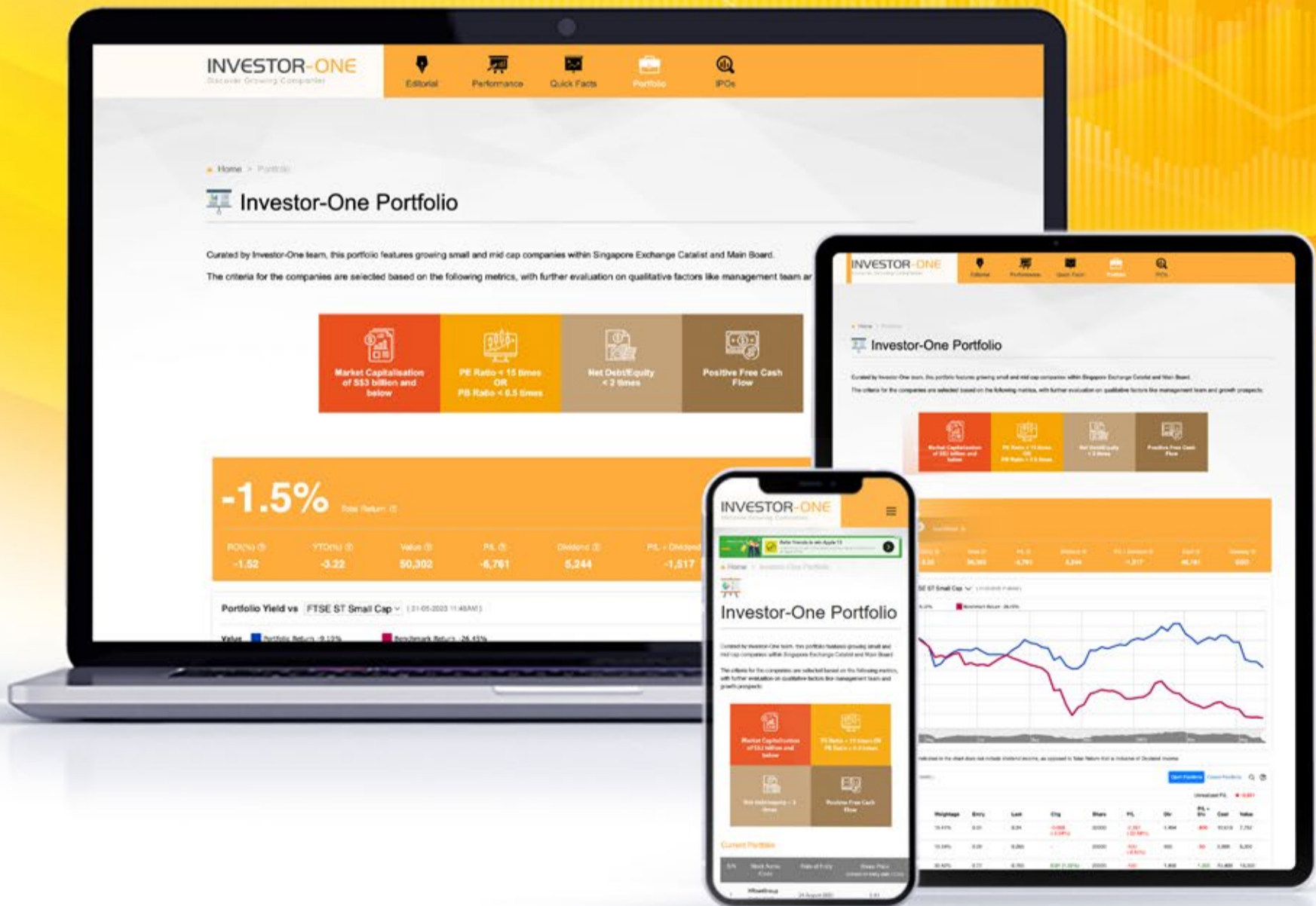
Moral of the story? Have your fun, but maybe don't take a digital religion too seriously.

To keep these insights at your fingertips, subscribe and share our updates!

INVESTOR-ONE PORTFOLIO

Curated and managed by the Investor-One team under ShareInvestor, this **free-to-access** portfolio will feature local small and mid-cap companies within Singapore Exchange's Mainboard and Catalyst.

Join us on the journey and watch as we manage a locally vested portfolio with a **fund of \$100,000**.



 **ENTER PORTFOLIO** >

Investor-One Portfolio

Curated by Investor-One team, this portfolio features growing small and mid cap companies within Singapore Exchange Catalist and Main Board.

The criteria for the companies are selected based on the following metrics, with further evaluation on qualitative factors like management team and growth prospects:

 <p>Market Capitalisation of S\$3 billion and below</p>	 <p>PE Ratio < 15 times OR PB Ratio < 0.5 times</p>
 <p>Net Debt/Equity < 2 times</p>	 <p>Positive Free Cash Flow</p>



ROI(%)	YTD(%)	Value	P/L	Dividend	P/L + Dividend	Cash	Currency
0.44	0.62	59,776	-7,300	7,736	436	40,660	SGD



Note: The Portfolio Return indicated in the chart does not include dividend income, as opposed to Total Return that is inclusive of Dividend Income.

continued on next page...

INVESTOR-ONE

Discover Growing Companies

Summary (19-10-2023)

Open Positions

Unrealized P/L ↓ -4,400

Name↑	Weightage	Entry	Last	Chg	Share	P/L	Div	P/L + Div	Cost	Value
Geo Energy Res	16.21%	0.31	0.3	0.015 (5.26%)	32300	-323 (-3.23%)	1,615	1,292	10,013	9,690
Hock Lian Seng	8.36%	0.29	0.25	-	20000	-800 (-13.79%)	450	-350	5,800	5,000
HRnetGroup	22.92%	0.77	0.685	-	20000	-1,700 (-11.04%)	1,774	74	15,400	13,700
Hyphens Pharma	23.42%	0.3	0.28	-	50000	-1,000 (-6.67%)	2,690	1,690	15,000	14,000
JEP Hldgs	17.29%	0.31	0.32	-	32300	323 (3.23%)	-	323	10,013	10,336
Kimly	5.19%	0.4	0.31	-	10000	-900 (-22.50%)	224	-676	4,000	3,100
Nordic	6.61%	0.395	0.395	-	10000	-	383	383	3,950	3,950

Summary (19-10-2023)

Closed Positions

Realized Profit ↓ -2,900

Name↑	Avg Buy	Avg Sell	Shares	Comm	P/L	P/L + Div	Proceeds
HG Metal	0.375	0.34	10000	-	-350	50	3,400
InnoTek	0.735	0.48	10000	-	-2,550	-2,350	4,800

Transaction (19-10-2023)

Action	Stock	Price	Shares	Exchange Rate	Comm	Amount	Date↓	Notes
Buy	JEP Hldgs	0.310	32300	N/A	0.00	10,013	4 Jul 2023	-
Sell	HG Metal	0.340	10000	N/A	0.00	3,400	13 Mar 2023	-
Sell	InnoTek	0.480	10000	N/A	0.00	4,800	13 Mar 2023	-
Buy	Geo Energy Res	0.310	32300	N/A	0.00	10,013	13 Mar 2023	-
Buy	HRnetGroup	0.770	20000	N/A	0.00	15,400	16 Feb 2022	-
Buy	Kimly	0.400	10000	N/A	0.00	4,000	16 Feb 2022	-
Buy	HG Metal	0.375	10000	N/A	0.00	3,750	16 Feb 2022	-
Buy	InnoTek	0.735	10000	N/A	0.00	7,350	16 Feb 2022	-
Buy	Nordic	0.395	10000	N/A	0.00	3,950	16 Feb 2022	-
Buy	Hyphens Pharma	0.300	50000	N/A	0.00	15,000	16 Feb 2022	-
Buy	Hock Lian Seng	0.290	20000	N/A	0.00	5,800	16 Feb 2022	-
Cash	Deposit	-	-	N/A	-	100,000	15 Feb 2022	-

continued on next page...

INVESTOR-ONE

Discover Growing Companies

Dividend (19-10-2023)

YTD

SGD 5276.70

TRAILING 12 MONTHS

SGD 5276.70

2022

SGD 2459.20

Stock	Ex-Date	Payable Date	Amt	Amt(SGD)	Total
HRnetGroup	30 Aug 2023	11 Sep 2023	SGD 0.0187	0.0187	374
Geo Energy Res	28 Aug 2023	06 Sep 2023	SGD 0.0050	0.0050	161.50
Nordic	17 Aug 2023	04 Sep 2023	SGD 0.0100	0.0100	100.10
Hyphens Pharma	16 Aug 2023	31 Aug 2023	SGD 0.0360	0.0360	1800
Kimly	27 Jun 2023	14 Jul 2023	SGD 0.0056	0.0056	56
Geo Energy Res	29 May 2023	08 Jun 2023	SGD 0.0050	0.0050	161.50
Hyphens Pharma	09 May 2023	24 May 2023	SGD 0.0111	0.0111	555
Geo Energy Res	08 May 2023	17 May 2023	SGD 0.0400	0.0400	1292
Nordic	07 May 2023	17 May 2023	SGD 0.0091	0.0091	90.60
Hock Lian Seng	07 May 2022	19 May 2022	SGD 0.0100	0.0100	200
HRnetGroup	03 May 2022	12 May 2022	SGD 0.0187	0.0187	374
Kimly	26 Jan 2022	08 Feb 2022	SGD 0.0112	0.0112	112
HRnetGroup	28 Aug 2022	06 Sep 2022	SGD 0.0213	0.0213	426
Nordic	16 Aug 2022	02 Sep 2022	SGD 0.0116	0.0116	116.20
Kimly	29 Jun 2022	15 Jul 2022	SGD 0.0056	0.0056	56
Hyphens Pharma	11 May 2022	25 May 2022	SGD 0.0067	0.0067	335
InnoTek	10 May 2022	25 May 2022	SGD 0.0200	0.0200	200
Hock Lian Seng	08 May 2022	20 May 2022	SGD 0.0125	0.0125	250
HRnetGroup	08 May 2022	18 May 2022	SGD 0.0300	0.0300	600
Nordic	05 May 2022	17 May 2022	SGD 0.0015	0.0015	15.20
Nordic	05 May 2022	17 May 2022	SGD 0.0061	0.0061	60.80
HG Metal	05 May 2022	20 May 2022	SGD 0.0400	0.0400	400

This portfolio is managed by Investor-One research team, under ShareInvestor.

Disclaimer:

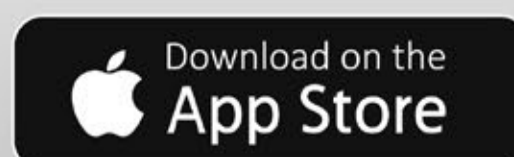
1. The Investor-One portfolio is aggregated for educational and illustration purposes only. It is curated based on fixed financial parameters as indicated above. The investor-one team select their stocks solely base on the these fixed parameters. The featured companies are for information only and does not constitute investment advice.
2. The investor-one team is not licensed by any financial authority in Singapore. You should consult your Trading Representative or Financial Advisors before making any financial decisions.
3. Current Price, current value and gain/loss (%) under current portfolio are based on 10 minutes delayed data.
4. Purchase Price and Exit Price are based on EOD price.
5. The views and opinions expressed does not necessarily reflect those of ShareInvestor Pte Ltd nor any related companies of ShareInvestor Pte Ltd.

All New **ShareInvestor Mobile App**



**Charting | Market | Watchlist | News | Prices | Alerts
Time & Sales | Key Statistics | More**

Now available on



TOP SIGNIFICANT INSIDER ACTIVITY



Data extracted from WebPro, accurate as at yesterday

Effective Change Date (Notice Date)	Stock Name	Buyer / Seller Name (Classification ^a)	Security Types ^b	Acquired / (Disposed) ['000]			Price	Closing Price ^d	No. of Shares After Trade ['000]			
				Direct	Deemed	Total			Direct	Deemed	Total	% Held ^c
18 Oct 2023 (18 Oct 2023)	ZICO Hldgs	DATUK NG HOCK HENG [Dir/CEO]	S/U	3,000		3,000		0.068	9,821		9,821	2.590
18 Oct 2023 (18 Oct 2023)	Wing Tai	Cheng Wai Keung [Dir/CEO]	S/U		220	220		1.450	214	465,284	465,498	61.130
13 Oct 2023 (18 Oct 2023)	IHH	EMPLOYEES PROVIDENT FUND BOARD [SSH]	S/U	3,750		3,750		1.710	934,463		934,463	10.610
16 Oct 2023 (18 Oct 2023)	TC Auto	Octo Holdings Limited [SSH]	S/U	26,350		26,350		0.129	244,593	113,485	358,078	60.730
17 Oct 2023 (18 Oct 2023)	AIMS Property	George Wang [Dir/CEO]	S/U		22	22		0.935		25,022	25,022	
16 Oct 2023 (17 Oct 2023)	JB Foods	GOI SENG HUI [Dir/CEO]	S/U	10		10		0.480	1,783	72,934	74,718	24.640
17 Oct 2023 (17 Oct 2023)	Wing Tai	Cheng Wai Keung [Dir/CEO]	S/U		230	230		1.460	214	465,063	465,278	61.100
12 Oct 2023 (17 Oct 2023)	IHH	EMPLOYEES PROVIDENT FUND BOARD [SSH]	S/U	1,323		1,323		1.720	930,713		930,713	10.568
12 Oct 2023 (17 Oct 2023)	Asian Pay Tv Tr	Lu, Fang-Ming [Dir/CEO]	S/U	369		369	0.096	0.096	9,940	10,355	20,295	1.123
17 Oct 2023 (17 Oct 2023)	GDS Global	D'Oasis Pte. Ltd. [SSH]	S/U	-56,500		-56,500		0.066	16,500		16,500	14.730
12 Oct 2023 (16 Oct 2023)	ThaiBev	Maxtop Management Corp [SSH]	S/U	-700,000		-700,000	0.545	0.550	2,276,628		2,276,628	9.060
13 Oct 2023 (16 Oct 2023)	Cortina	Lim Keen Ban Holdings Pte Ltd [SSH]	S/U	12		1,600		3.500	54,257		54,257	32.768
13 Oct 2023 (16 Oct 2023)	Cortina	Lim Yin Chian [SSH]	S/U		1,600	1,600		3.500		74,061	74,061	44.729
13 Oct 2023 (16 Oct 2023)	Cortina	Chia Nyok Song@Cheah Yoke Heng [SSH]	S/U		1,600	1,600		3.500		74,061	74,061	44.729
13 Oct 2023 (16 Oct 2023)	Cortina	LKB Private Trust Company Limited [SSH]	S/U		1,600	1,600		3.500		54,257	54,257	32.768
13 Oct 2023 (16 Oct 2023)	Cortina	Lim Keen Ban [Dir/CEO]	S/U		1,600	1,600		3.500		74,061	74,061	44.729
13 Oct 2023 (16 Oct 2023)	Cortina	Lim Jit Yaw [Dir/CEO]	S/U		1,600	1,600		3.500		74,061	74,061	44.729
13 Oct 2023 (16 Oct 2023)	Cortina	Lim Jit Ming [Dir/CEO]	S/U		1,600	1,600		3.500		74,061	74,061	44.729
13 Oct 2023 (16 Oct 2023)	TrickleStar	HARALD WEINBRECHT [SSH]	S/U	610		610		0.178	8,580		8,580	10.260
13 Oct 2023 (16 Oct 2023)	TrickleStar	GUNANANTHAN NITHYANANTHAM [Dir/CEO]	S/U	-610		-610		0.178	7,228		7,228	8.650
11 Oct 2023 (16 Oct 2023)	IHH	EMPLOYEES PROVIDENT FUND BOARD [SSH]	S/U	2,590		2,590		1.720	929,390		929,390	10.553
16 Oct 2023 (16 Oct 2023)	Wing Tai	Cheng Wai Keung [Dir/CEO]	S/U		181	181		1.460	214	464,833	465,048	61.070
12 Oct 2023 (16 Oct 2023)	JMH USD	Yanjun SUN (Steve) [Dir/CEO]	S/U	2		2	USD 0	44.160				
13 Oct 2023 (13 Oct 2023)	PlatoCapital	Lim Kian Onn [Dir/CEO]	S/U		16	16	2.280	2.560		9,106	9,106	74.770
12 Oct 2023 (13 Oct 2023)	PlatoCapital	Lim Kian Onn [Dir/CEO]	S/U		6	6	2.280	2.280		9,090	9,090	74.640
11 Oct 2023 (13 Oct 2023)	PlatoCapital	Lim Kian Onn [Dir/CEO]	S/U		9	9	2.242	2.280		9,084	9,084	74.590
13 Oct 2023 (13 Oct 2023)	PlatoCapital	Cosima Investments Pte Ltd [SSH]	S/U		16	16	2.280	2.560		7,505	7,505	61.630
12 Oct 2023 (13 Oct 2023)	PlatoCapital	Cosima Investments Pte Ltd [SSH]	S/U		6	6	2.280	2.280		7,489	7,489	61.500
11 Oct 2023 (13 Oct 2023)	PlatoCapital	Cosima Investments Pte Ltd [SSH]	S/U		9	9	2.242	2.280		7,483	7,483	61.450
10 Oct 2023 (13 Oct 2023)	Mapletree Log Tr	Temasek Holdings (Private) Limited ("Temasek") [SSH]	S/U		-4,917	-4,917		1.580		1,636,798	1,636,798	32.990

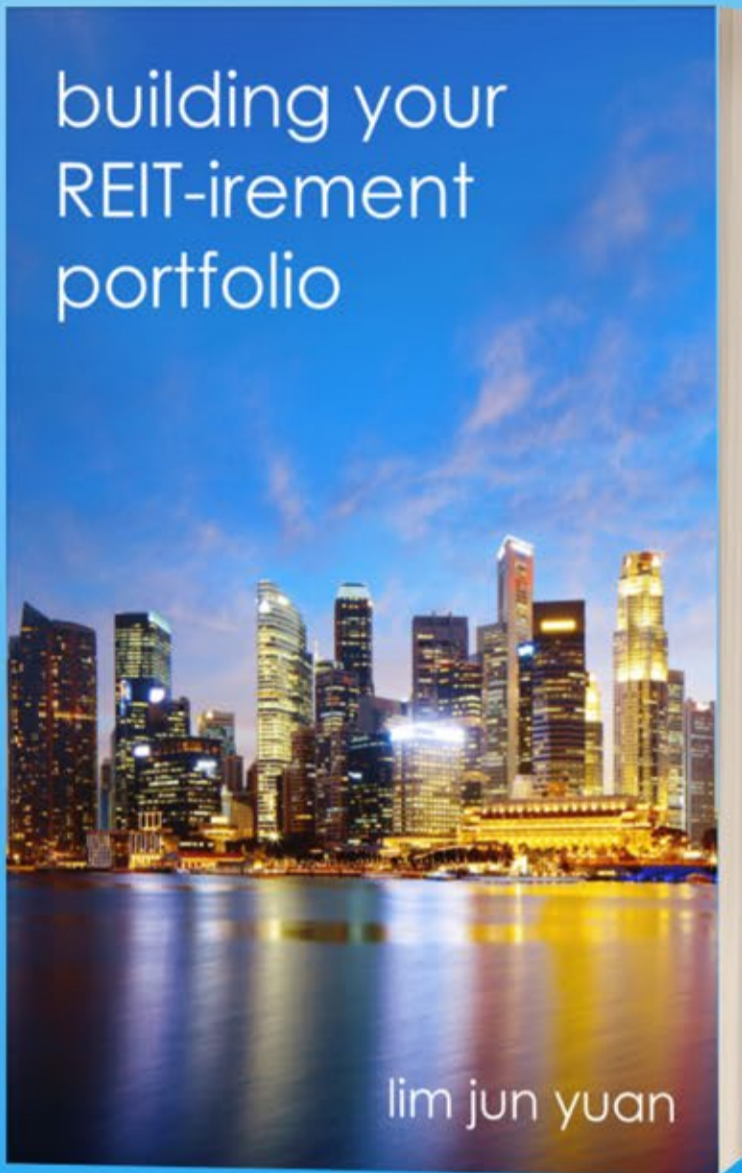
Access WebPro to view more insider trades

Disclaimer: The information on this page is provided as a service to readers. It does not constitute financial advice and/or any investment recommendations. Past performance is not indicative of future results. We assume no liability for damages resulting from or arising out of the use of such information. It would be best if you did your own research to make your personal investment decisions wisely or consult a licenced investment advisor.

INVESTMENT BOOKS

INVESTMENT BOOKS

BUILDING YOUR REIT-IREMENT PORTFOLIO



Lim Jun Yuan
Full Time Investor & Founder of The Singaporean Investor Blog

[Click for more of Jun Yuan's bio](#)

Jun Yuan's insights, strategies, and advice have helped many on their investing journey. The road to retirement can be challenging, but it doesn't have to be. This book is your roadmap to financial security in retirement. Learn how to build a robust REIT portfolio that will provide you with a cushion during your retirement years, so you can finally bid farewell to financial worries.

Definitely a must-read for investors looking to build a passive income flow!

Especially in a Singapore context, REITs is one of the many way to build up your recurring income as a means for retirement. In his book, Jun Yuan gives a very thorough views on REITs. From the basic concepts and understandings of REITs, to the valuing / monitoring / investing aspects of REITs, Jun Yuan has not only provide the simple ABCs (what), but also the application (how) to provide some action-able considerations.

Personally, I also like the "bonus chapters" that help to address some FAQs, and provide an overview of the various REITs that are listed on SGX.

Highly recommended to those who want to kick-start his or her journey in building up a REIT-irement portfolio.

- Dan Chang C S, Trading Representative, PhillipCapital

I am specially honoured to help Jun Yuan with this review as he is definitely more savvy in REITs investing than me.

At first glance, the book provides a comprehensive and well-structured framework to share on various aspects of REIT investing, guiding readers throughout the whole process of buying and monitoring REITs.

Upon further reading, I am amazed of the value offered in this book such as the 9-point criteria checklist, practical case studies and 4 potential red flags we should take note of.

- James Yeo, Founder @ InvestKaki.com

\$29.00

Delivered via registered mail

PURCHASE NOW 

Terms and Conditions

•For registered mail purchase, the buyer must ensure their mailing address is correct. ShareInvestor will not be liable for any book that is mailed to the wrong address or the loss of any books in the mail.

•By purchasing the book, the buyer agrees to the Terms & Conditions stated.

IR Announcements



Cromwell European REIT: Fitch Affirms Investment Grade 'BBB-' Rating With A Stable Outlook.

Fitch has affirmed BBB- with a stable outlook for CEREIF and CEREIF's senior EUR1.5 billion medium-term note programme and EUR500 million outstanding unsecured notes. Fitch forecast CEREIF's EBITDA net leverage will remain below 8x, supported by the ongoing disposal programme, market rental growth, diversified high yield portfolio and sound financial profile. Fitch expects that the transition to logistics and light industrial sector will raise CEREIF's exposure to positive structural trends, including nearshoring of the supply chain and greater inventory stocking.

<http://cromwell.listedcompany.com/news.html/id/2462400>

Yanlord: Unaudited Key Operating Figures For September 2023.

In September 2023, the Group together with its joint ventures and associates' total contracted pre-sales from residential and commercial units, and car parks amounted to approximately RMB1.568 billion on a total contracted gross floor area of 67,835 square metres, a decrease of 83.2% and 63.2% respectively compared to the corresponding period of 2022.

<http://yanlord.listedcompany.com/news.html/id/2462295>



Rex: Norway & Oman Production Update For September 2023.

Lime Petroleum AS announced that oil production in September from the Brage Field in Norway, net to LPA, amounted to 6,135 barrels of oil equivalent per day. At the Yme Field, production in September, net to LPA, was 2,119 boepd. Masirah Oil Limited announced that gross production in September 2023 from the Yumna Field in offshore Block 50 Oman, amounted to an average of 1,736 stock tank barrels per day over 28 days (Full month average: 1,620 stb/d).

<http://rex.listedcompany.com/news.html/id/2462301>

AIMS APAC REIT: Fire Incident At 61 Yishun Industrial Park A, Singapore.

AIMS APAC REIT wishes to inform that there was a fire at one of its Singapore properties, 61 Yishun Industrial Park A, on 10 October 2023. The fire broke out at approximately 5:15 p.m. and was brought under control by the Singapore Civil Defence Force by around 6:30 p.m. No casualties were reported and investigation into the cause of the fire is underway.

<http://aimsapacreit.listedcompany.com/news.html/id/2462343>



Sarine: To Collaborate On Diamond Traceability Solution With Tracr.

Tracr and Sarine are pleased to announce their intention to collaborate on a scalable, cost-effective solution for use in tracking diamonds from their source to the point of entry into G7 countries. The solution combines the complementary benefits of both the Tracr platform and Sarine's Diamond Journey traceability solution. The Tracr-Sarine solution is designed to facilitate the source verification and traceability of diamonds upon entry to the G7 and other countries, utilizing a dedicated digital portal.

<http://sarine.listedcompany.com/news.html/id/2462187>

Centurion: To Comply With Dormitory Transition Scheme.

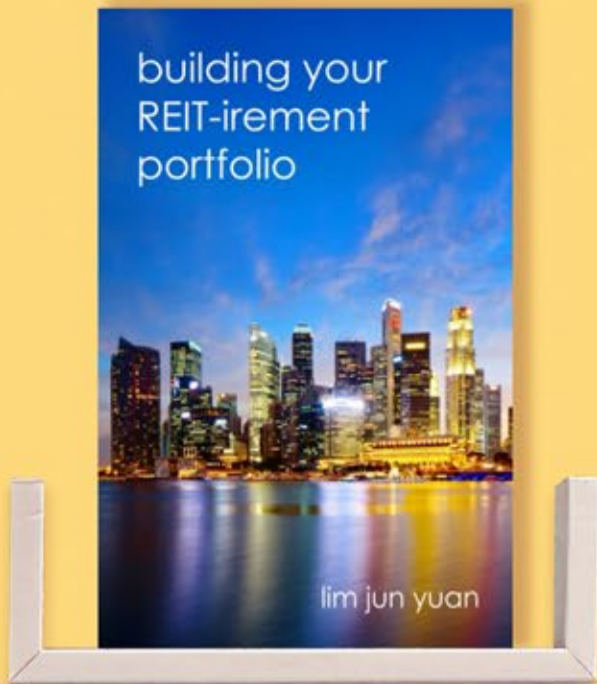
New improved interim standards for existing dormitories to be implemented between 2027 and 2030. Centurion's Purpose-Built Dormitories already meet some of the new requirements. Centurion well-placed to comply with new standards ahead of time, has plans in place to reduce impact of compliance on market bed supply.

<http://centurion.listedcompany.com/news.html/id/2462449>

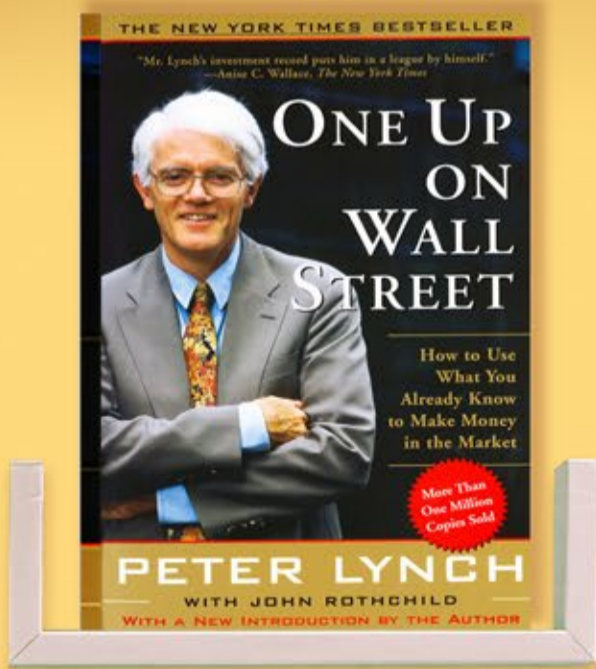
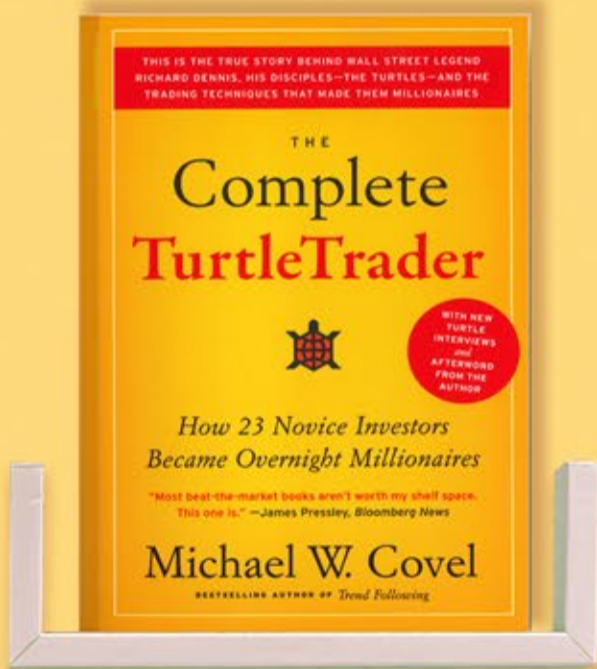
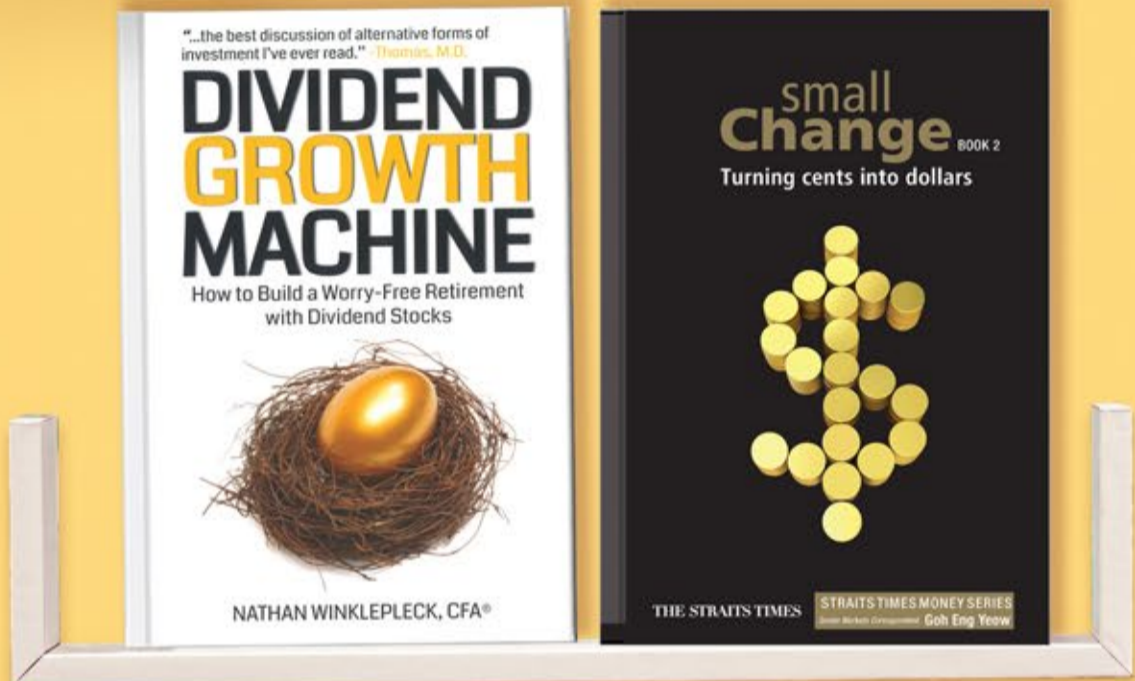


INVESTMENT BOOKS

INVESTMENT BOOKS



Click on book for more details

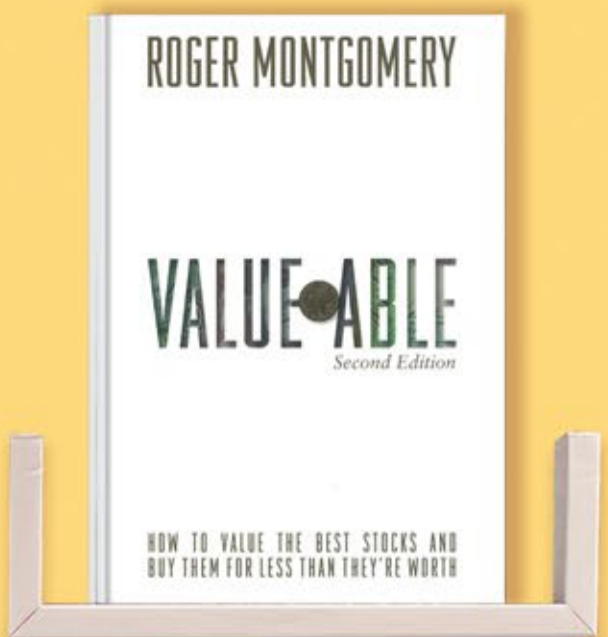
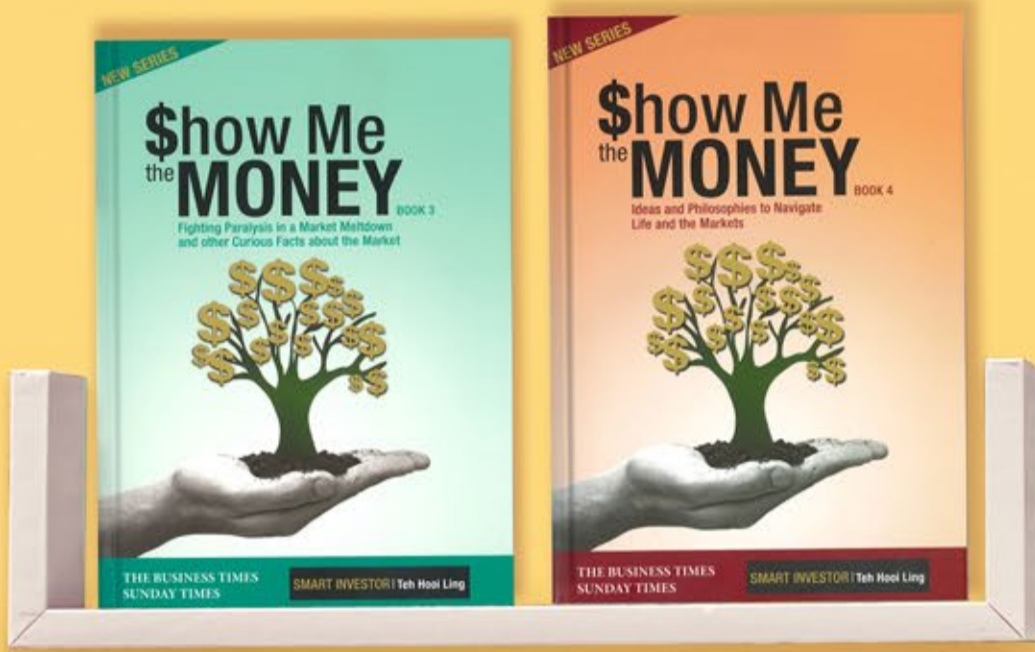


VIEW MORE BOOKS

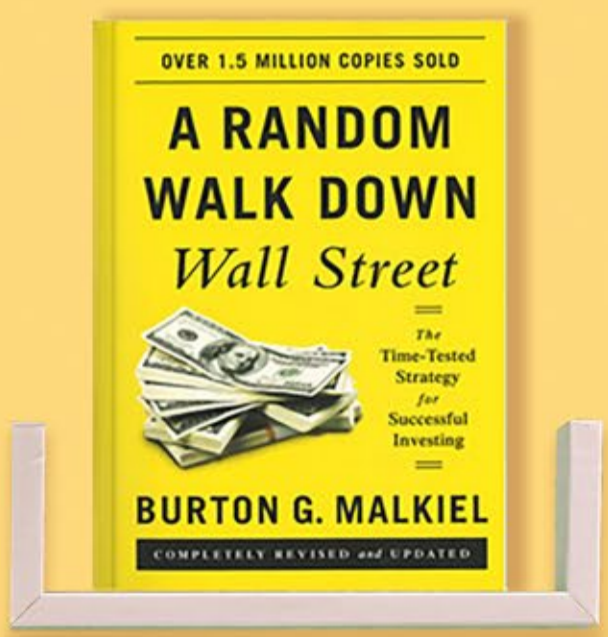


INVESTMENT BOOKS

INVESTMENT BOOKS



Click on book for more details



VIEW MORE BOOKS

