



Data &
Investing
Ideas

COMPANY SPOTLIGHT



4 THINGS TO KEEP IN MIND WHEN CHOOSING SUSTAINABLE DIVIDEND YIELDS

on pages 14-18



ALSO

TOP STOCKS OF THE WEEK

- Dividend Stocks – on page 05
- Growth Stocks – on page 07
- Value Stocks – on page 09



Investor-One Portfolio

See more on pages 10-13

IR Announcements

See more on page 21

02 MARKET AT A GLANCE

04 REGIONAL MARKETS

05 DIVIDEND STOCKS

07 GROWTH STOCKS

09 VALUE STOCKS

10 INVESTOR-ONE PORTFOLIO

14 COMPANY SPOTLIGHT: 4 THINGS TO
KEEP IN MIND WHEN CHOOSING
SUSTAINABLE DIVIDEND YIELDS

20 INSIDER TRADES

21 IR ANNOUNCEMENTS

22 INVESTMENT BOOKS



SHAREINVESTOR®

Invest with Knowledge



CREDITS SHAREINVESTOR

INVESTOR PLATFORMS

GENERAL MANAGER

Ethan Ho

RESEARCH ANALYST

Vincent Wong

MARKETING & SALES

MARKETING MANAGER

Bhavani Bala

SALES MANAGER

Nigel Lim

ADMIN

Gillian Ong

Alwin Liow

Dawn Ong

CONTENT

DIRECTOR

Edward Stanislaus

INVESTOR RELATIONS

GROUP MANAGING DIRECTOR

Edward Stanislaus

DIRECTOR

Zhao Yanjing

yanjing.zhao@shareinvestor.com

SENIOR MANAGER

Vivien Ong

vivien.ong@shareinvestor.com

SENIOR QC EXECUTIVE

Poh Lam Huat

lamhuat@shareinvestor.com

SHAREINVESTOR HOLDINGS

BOARD OF DIRECTORS

CHAIRMAN

Patrick Daniel

GROUP CEO

Christopher Lee

GROUP COO

Lim Dau Hee

GROUP CFO

Teo Siew May

GROUP MD

Shanison Lin

SHAREINVESTOR PTE LTD

151 Lorong Chuan #02-02

New Tech Park (Lobby B)

Singapore 556741

T (65) 6958 8000

F (65) 6958 8044

E admin@shareinvestor.com

W www.ShareInvestor.com

Advertise with us

Disclaimer:

The services information and data made available on or accessible via this newsletter including facts, views, advice, analyses, opinions and recommendations of individuals and organisations are for general information purposes only.

It is not intended as investment advice and must not be relied upon as such. ShareInvestor Pte Ltd and its third party information providers are not giving or purporting to give or representing or holding themselves out as giving financial, investment, tax, legal and other professional advice.

Advice from a securities professional is strongly advised.

Market at a Glance

Over 5 trading days as at yesterday

www.shareinvestor.com

market data at your fingertips



ShareInvestor WebPro (www.shareinvestor.com)

Prices > Stock Prices > SGX > click Stocks tab

1. mouse over Ranking > select Top Active > mouse over Column Layout > select Edit Customs > select Name > select Volume > select Last Done Price > Mouse Over Column Layout > select Custom
2. mouse over Ranking > select Top Turnover > mouse over Column Layout > select Edit Customs > select Name > select Last Done Price > select Value > Mouse Over Column Layout > select Custom
3. mouse over Ranking > select Top Gainers (Over 5 Trading Days) > mouse over

Column Layout > select Edit Customs > select Name > select Last Done Price > select 5 Days Change > select 5 Days % Change > Mouse Over Column Layout > select Custom

4. mouse over Ranking > select Top Losers (Over 5 Trading Days)
5. mouse over Ranking > select Top % Gainers (Over 5 Trading Days)
6. mouse over Ranking > select Top % Losers (Over 5 Trading Days)

Singapore Top Actives

(as at yesterday)

Name	Last Done	Volume
Seatrium	0.131	259,215.7
Rex Intl	0.196	54,717.5
HSI 19000MBeCW231129	0.051	54,340.0
HSI 16600MBePW231129	0.083	42,821.0
MarcoPolo Marine	0.053	36,419.7
Genting Sing	0.855	35,973.4
Golden Agri-Res	0.270	31,857.7
Annica	0.001	27,681.9
Frasers L&C Tr	1.060	21,523.1
LifeBrandz	0.002	21,500.2

Top Gainers

(over 5 Trading days as at yesterday)

Name	Last Done	5 Days Chg
Sunny 5xShortUB250127	2.180	1.310
JD 5xShortUB250127	2.330	1.285
LiNing 5xShortSG240327	2.810	1.265
LiNing 5xShortUB250321	2.900	1.005
Sunny 5xShortSG241209	1.410	0.595
Creative	1.700	0.520
Meituan 5xShortSG231220	1.240	0.425
Tencent3xShortUB250428US\$	2.370	0.425
JMH USD	47.080	0.410
Venture 5xShortSG241218	2.470	0.340

Top Losers

(over 5 Trading days as at yesterday)

Name	Last Done	5 Days Chg
SPDR S&P500 US\$	428.000	-16.000
SPDR DJIA US\$	337.350	-10.750
GLD SG\$	238.500	-5.850
GLD US\$	173.830	-5.050
XT Vietnam US\$	27.390	-2.540
Nasdaq 7xLongSG260226	4.170	-1.580
XT SingGovBond SG\$	141.180	-0.910
Nasdaq 7xLongSG241016	2.740	-0.860
Venture	12.360	-0.640
NetEase 5xLongUB251031	0.985	-0.580

Singapore Top Turnover

(as at yesterday)

Name	Last Done	Value
DBS	33.500	86,089,364
OCBC Bank	12.800	69,118,684
UOB	28.280	60,968,040
Singtel	2.410	42,993,612
Seatrium	0.131	34,132,176
CapLand Ascendas REIT	2.710	30,766,310
Genting Sing	0.855	30,727,534
CapLand IntCom T	1.830	27,246,854
SIA	6.460	24,206,038
YZJ Shipbldg SGD	1.670	23,948,674

Top % Gainers

(over 5 Trading days as at yesterday)

Name	Last Done	5 Days % Chg
Sunny 5xShortUB250127	2.180	150.57
JD 5xShortUB250127	2.330	122.97
CapAllianz	0.002	100.00
Hoe Leong	0.002	100.00
LiNing 5xShortSG240327	2.810	81.88
Sunny 5xShortUB250430	0.016	77.78
Galaxy 5xShortUB250127	0.455	75.00
Sunny 5xShortSG241209	1.410	73.01
China Yuanbang	0.370	68.18
Galaxy 5xShortSG250205	0.685	63.10

Top % Losers

(over 5 Trading days as at yesterday)

Name	Last Done	5 Days % Chg
PingAn MB ePW231004	0.004	-84.00
HSI 19400MBeCW231030	0.015	-61.54
HSI 20200MBeCW231030	0.008	-60.00
MSM Intl	0.027	-59.70
NIO MBeCW231122	0.028	-56.92
HSI 18600MBeCW231030	0.032	-52.94
Metech Intl	0.028	-51.72
CMB 5xLongUB250430	0.008	-50.00
HSI 7xLongSG231215	0.002	-50.00
Jasper Inv^	0.001	-50.00

Disclaimer: The information on this page is provided as a service to readers. It does not constitute financial advice and/or any investment recommendations. Past performance is not indicative of future results. We assume no liability for damages resulting from or arising out of the use of such information. It would be best if you did your own research to make your personal investment decisions wisely or consult a licenced investment advisor.

MARKET AT A GLANCE



SHAREINVESTOR WEBPRO

STOCK MARKET DATA AT YOUR FINGERTIPS

Powerful browser-based market analytics platform.
Access from anywhere

8 Markets Data

- ▶ Get access to data from Bursa, NYSE, Nasdaq, HKEX, SGX, IDX, SET & ASX

Portfolio Management

- ▶ Profit & Loss Summary
- ▶ Stock Alert
- ▶ News & Events filtering
- ▶ Customizable column layout

Fundamental Analysis

Financial Analysis Statement

- ▶ Profit & Loss
- ▶ Balance Sheet
- ▶ Cash Flow Statement
- ▶ More than 20 Financial Ratios
- ▶ Dividend Analysis

Technical Charting

- ▶ C² chart (Customisable & Comprehensive)

Brokers' Call

Intrinsic Value Calculator

FactSheet

- ▶ Key Stock Information
- ▶ Ownership
- ▶ Consensus Estimates
- ▶ Annual Report
- ▶ Historical Price
- ▶ Insider Trades

What's new on WebPro (Stable Release 12.1.0)

In our effort to keep our platform at the forefront of trading technology, we have added on some new features onto our C2 Chart in WebPro

ADDITIONAL NEW FEATURES:

- ▶ Anchor selector for AVWAP, PVAT, and PAV indicators
- ▶ Volume profile indicator by date range
- ▶ Moving Average Cross indicator
- ▶ Guppy Multiple Moving Average (GMMA) indicator
- ▶ GoNoGo Trend Signal indicators
- ▶ SignalIQ

So what are you waiting for? Head to our platform today and check out our new trading chart features and indicators. We're confident that you'll love the improvements we've made and that they'll help you become a more successful trader.

Click here to start your 9 days FREE trial



Regional Markets

Over 5 trading days



ShareInvestor WebPro (www.shareinvestor.com)

1. Price > Stock prices
2. select Market: Bursa / HKEX / NYSE / NASDAQ (one bourse at a time)
3. select Stocks Tab
4. select Ranking Top Gainers or Top Losers (Over 5 Trading Days)
5. Mouse over Column Layout > select Edit Customs > select Name > select Last Done Price > select 5 Days Change > select 52 Weeks High > select 52 Weeks Low > Mouse Over Column Layout > select Custom

BURSA (RM)

Top Gainers

Name	Last Done	5 Days Change	52 Weeks High	52 Weeks Low
RAPID	24.720	0.720	24.800	13.600
KESM	7.600	0.500	9.520	6.210
HEIM	24.140	0.460	30.000	22.740
AEONCR	11.800	0.400	13.620	10.880
HEXTECH	24.400	0.400	30.600	4.120

Top Losers

Name	Last Done	5 Days Change	52 Weeks High	52 Weeks Low
IHS046000824	101.300	-0.700	102.500	97.900
PETDAG	22.700	-0.500	23.600	17.129
UTDPLT	16.900	-0.460	17.460	13.609
SAM	4.320	-0.380	5.790	3.710
CIHLDG	3.030	-0.310	3.780	2.600

HONG KONG (HKD)

Top Gainers

Name	Last Done	5 Days Change	52 Weeks High	52 Weeks Low
CHINA INTL CAP CORP HK ASSET MGMT ICBC CICC USD MONEY MARKET ETF	8,518.400	13.350	8,515.250	8,115.350
WUXI APPTCC CO LTD	93.000	8.250	114.000	57.900
EVEREST MEDICINES LTD	24.450	5.750	30.000	5.980
BOSERA ASSET MGT (INTL) CO LTD USD MONEY MARKET ETF HKD	7,893.000	4.600	7,913.600	7,811.050
KEYMED BIOSCIENCES INC	55.000	4.100	82.850	32.750

Top Losers

Name	Last Done	5 Days Change	52 Weeks High	52 Weeks Low
MOG DIGITECH HOLDINGS LTD	6.000	-72.750	104.300	2.980
SPDR GOLD TRUST GOLD SHARES NPV	1,361.000	-39.000	1,498.000	1,181.000
XTRACKERS NIFTY 50 SWAP UCITS ETF 1C	1,783.500	-37.000	1,827.500	1,543.000
XTRACKERS MSCI USA SWAP UCITS ETF 1C	974.200	-36.300	1,035.000	808.200
XTRACKERS MSCI KOREA UCITS ETF 1C	550.000	-24.400	637.000	433.800

NYSE (USD)

Top Gainers

Name	Last Done	5 Days Change	52 Weeks High	52 Weeks Low
DANAHER CORP	220.000	143.020	-	-
NVR INC	5,941.000	52.530	6,525.000	3,816.555
WATSCO INC	377.740	31.270	383.830	228.610
WHITE MOUNTAINS INSURANCE GROUP	1,538.000	31.070	1,617.000	1,255.000
ALPHA METALLURGICAL RESOURCES INC	257.870	19.640	261.990	124.580

Top Losers

Name	Last Done	5 Days Change	52 Weeks High	52 Weeks Low
BERKSHIRE HATHAWAY INC	542,495.050	-8,534.950	566,569.970	393,012.250
CHIPOTLE MEXICAN GRILL	1,806.080	-59.930	2,175.010	1,344.050
CABLE ONE INC	608.080	-30.260	919.225	599.040
BLACKROCK INC	643.390	-25.440	785.650	503.124
MARKEL GROUP INC	1,498.980	-20.530	1,560.000	1,075.110

NASDAQ (USD)

Top Gainers

Name	Last Done	5 Days Change	52 Weeks High	52 Weeks Low
BOOKING HOLDINGS INC	3,082.660	46.390	3,251.709	1,616.850
SUPER MICRO COMPUTER INC	257.540	26.000	357.000	50.280
IMMUNOVANT INC	39.515	18.265	41.720	4.495
PREFORMED LINE PRODUCTS CO	168.290	17.290	184.820	70.160
SOLENO THERAPEUTICS INC	20.670	16.560	30.300	0.850

Top Losers

Name	Last Done	5 Days Change	52 Weeks High	52 Weeks Low
MERCADOLIBRE INC	1,256.520	-36.760	1,451.560	754.760
MORPHIC HOLDING INC	22.820	-28.580	63.083	21.180
ARGENX SE SPON ADR EACH REP 1 ORD SHS	477.790	-27.620	550.760	333.070
EQUINIX INC	707.100	-26.410	821.630	494.890
CINTAS CORP	481.080	-23.350	524.760	370.930

Dividend Stocks

Price & Total Shareholder Return (as at yesterday)



DEFINITION Company is paying out dividend with low or moderate leverage.

CHART GUIDE Total Shareholder Return (TSR) combines share price appreciation and distributions paid to show the total return to the shareholder expressed as a percentage.



ShareInvestor WebPro > Screener > Market Screener (FA & TA) > select SGX > add criteria

A. Criteria

- > click Add Criteria
- Fundamental Analysis Conditions tab >select (i) Dividend Yield
- Fundamental Analysis Conditions tab >select (ii) Dividend Payout (Historical)
- Fundamental Analysis Conditions tab >select (iii) Total Debt To Equity
- Fundamental Analysis Conditions tab >select (iv) Total Shareholder Returns

- Fundamental Analysis Conditions tab >select (v) Total Shareholder Returns
- Fundamental Analysis Conditions tab / >select (vi) CAGR of Dividend Per Share
- Fundamental Analysis Conditions tab >select (vii) CAGR of Dividend Per Share

B. Conditions (Criteria Filters)

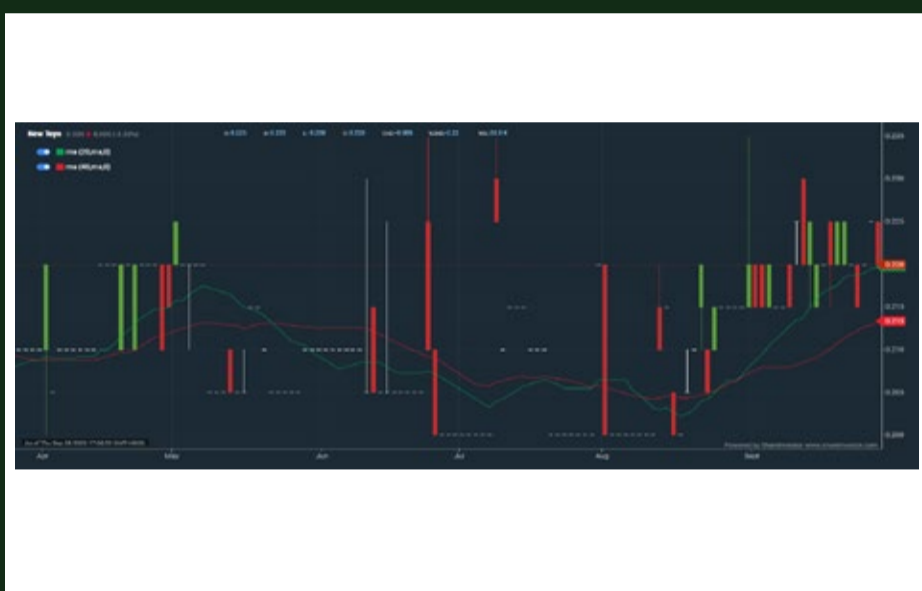
1. Dividend Yield - select (more than) type (1) % for the past select (1) financial year(s)
2. Dividend Payout (Historical) - select (between) type (0.5) to type (1) times for the past select (1) financial year(s)
3. Total Debt to Equity – select (less than) type (1) for the past select (1) financial year(s)
4. Total Shareholder Return - – select (more than) type (5) % for the past select (3) financial year(s)
5. Total Shareholder Return - – select (more than) type (5) % for the past select (5) financial year(s)

6. CAGR of Dividend Per Share - – select (less than) type (30) % for the past select (5) financial year(s)
 7. CAGR of Dividend Per Share - – select (more than) type (1) % for the past select (5) financial year(s)
- > click Save Template > Create New Template type (Dividend Companies) > click Create
 - > click Save Template as > select Dividend Companies > click Save
 - > click Screen Now (may take a few minutes)
 - > Sort By: Select (Dividend Yield) Select (Desc)
 - > Mouse over stock name > Factsheet > looking for Total Shareholder Return



New Toyo Int Hldgs Ltd. (N08.SI)

ANALYSIS

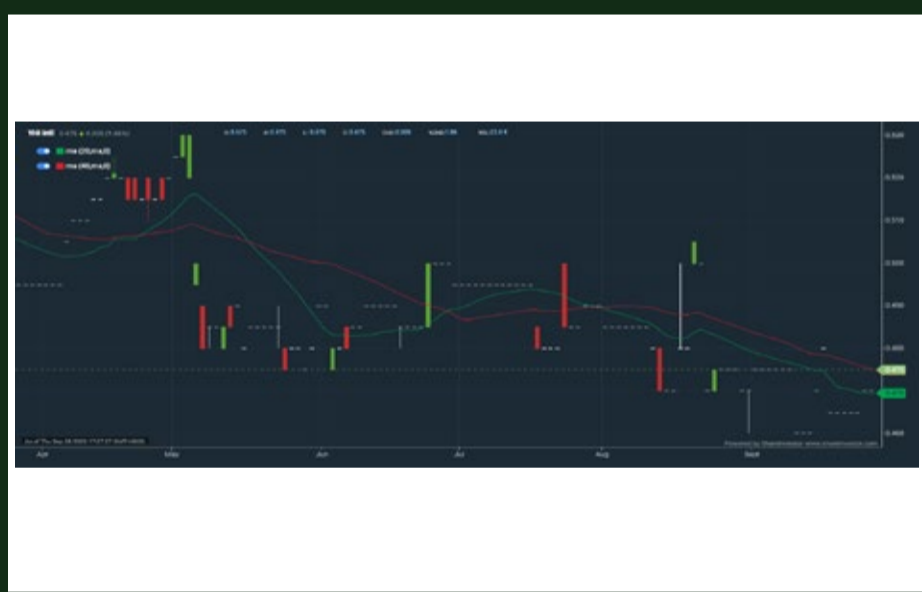


Period	Dividend Received	Capital Appreciation	Total Shareholder Return
Short Term Return	5 Days	-	-3.88%
	10 Days	-	-
	20 Days	-	+2.33%
Medium Term Return	3 Months	-	+15.88%
	6 Months	0.009	+0.018
	1 Year	0.015	+0.025
Long Term Return	2 Years	0.033	+0.016
	3 Years	0.045	+0.037
	5 Years	0.072	+0.115
Annualised Return	Annualised	-	+4.44%



YHI International Limited (BPF.SI)

ANALYSIS



Period	Dividend Received	Capital Appreciation	Total Shareholder Return
Short Term Return	5 Days	-	+2.15%
	10 Days	-	+3.36%
	20 Days	-	+1.06%
Medium Term Return	3 Months	-	-1.89%
	6 Months	0.006	+0.020
	1 Year	0.006	-0.025
Long Term Return	2 Years	0.073	-0.010
	3 Years	0.105	-0.015
	5 Years	0.151	-0.076
Annualised Return	Annualised	-	+9.10%



Sabana Industrial Reit (M1GU.SI)

ANALYSIS



Period	Distribution Received	Capital Appreciation	Total Shareholder Return
Short Term Return	5 Days	-	-1.28%
	10 Days	-	-
	20 Days	-	-
Medium Term Return	3 Months	0.016	-0.050
	6 Months	0.016	-0.060
	1 Year	0.021	-0.040
Long Term Return	2 Years	0.062	-0.045
	3 Years	0.100	-0.020
	5 Years	0.145	-0.050
Annualised Return	Annualised	-	+1.19%

MAKE BETTER TRADING STRATEGIES with SHARE INVESTOR STATION



8 Markets Data

- ▶ Get access to data from Bursa, NYSE, Nasdaq, HKEX, SGX, IDX, SET & ASX

Dynamic Chart

- ▶ Candlestick Pattern Recognition
- ▶ 111 Indicators
- ▶ 39 Drawing Tools
- ▶ Performance Comparison Chart

Intraday Data

- ▶ Market Depth
- ▶ Trade Summary Matrix & Chart
- ▶ Times & Sales
- ▶ Intraday Market Ticker

Market Screener

- ▶ 96 criteria ranging from FA, TA, Consensus Estimate
- ▶ Real-time Data

Power Frame

- ▶ Combining few Dynamic Charts together with intraday information in one frame

Technical Analysis

Fundamental Analysis

Financial Analysis Statement

- ▶ Profit & Loss
- ▶ Balance Sheet
- ▶ Cash Flow Statement
- ▶ More than 20 Financial Ratios
- ▶ Dividend Analysis

FactSheet

- ▶ Key Stock Information
- ▶ Ownership
- ▶ Consensus Estimates
- ▶ Annual Report
- ▶ Historical Price
- ▶ Insider Trades

Start your 18 days
FREE trial now
(Valued at SGD\$52.40)





DEFINITION Company revenue is growing and making good quality of earnings with positive Free Cash Flow.

CHART GUIDE Total Shareholder Return (TSR) combines share price appreciation and distributions paid to show the total return to the shareholder expressed as a percentage.



ShareInvestor WebPro > Screener > Market Screener (FA & TA) > select SGX > add criteria

A. Criteria

1. Fundamental Analysis Conditions tab >select (i) Free Cash Flow, (ii) Revenue Growth, (iii) Gross Profit (Earnings) Margin, (iv) Quality of Earnings, (v) Total Shareholder Returns, > click Add Criteria
2. Fundamental Analysis Conditions tab >select (vi) Total Shareholder Returns > click Add Criteria

B. Conditions (Criteria Filters)

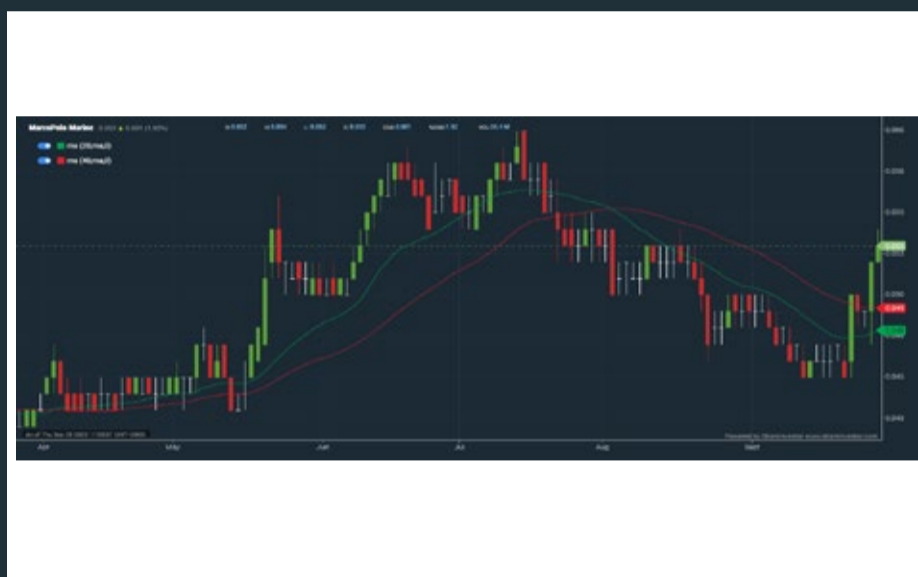
1. Free Cash Flow - select (more than) type (1) for the past select (1) financial year(s)
 2. Revenue Growth - select (more than) type (1) for the past select (1) financial year(s)
 3. Gross Profit (Earnings) Margin - select (more than) type (30) % for the past select (1) financial year(s)
 4. Quality of Earnings - select (more than) type (1) for the past select (1) financial year(s)
 5. Total Shareholder Return - select (more than) type (5) % for the past select (3) financial year(s)
 6. Total Shareholder Return - select (more than) type (5) % for the past select (5) financial year(s)
- > click Save Template > Create New Template type (Growth Companies) > click Create

- > click Save Template as > select Growth Companies > click Save
- > click Screen Now (may take a few minutes)
- > Sort By: Select (Revenue Growth) Select (Desc)
- > Mouse over stock name > Factsheet > looking for Total Shareholder Return



MarcoPolo Marine Ltd. (5LY.SI)

ANALYSIS



Period	Dividend Received	Capital Appreciation	Total Shareholder Return
Short Term Return	5 Days	-	+12.77%
	10 Days	-	+17.75%
	20 Days	-	-8.16%
Medium Term Return	3 Months	-	-7.82%
	6 Months	-	+23.26%
	1 Year	-	+47.22%
Long Term Return	2 Years	-	+56.20%
	3 Years	-	+307.43%
	5 Years	-	+103.85%
Annualised Return	Annualised	-	+15.74%



Grand Banks Yachts Limited (G50.SI)

ANALYSIS

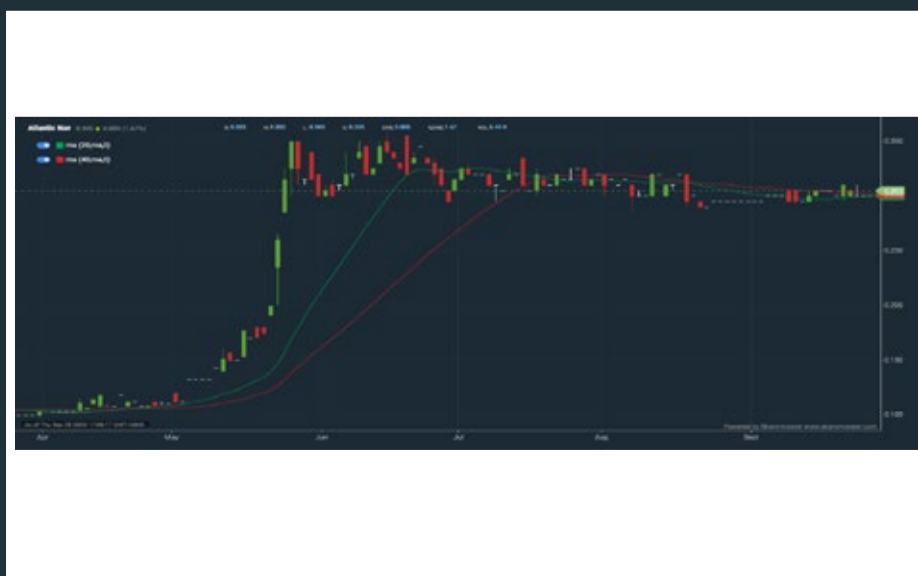


Period	Dividend Received	Capital Appreciation	Total Shareholder Return	
Short Term Return	5 Days	-	-	
	10 Days	-	-1.59%	
	20 Days	-	-1.59%	
Medium Term Return	3 Months	-	-	
	6 Months	-	+3.23%	
	1 Year	0.065	-0.036	+12.60%
Long Term Return	2 Years	0.219	-0.015	+6.47%
	3 Years	0.219	-0.016	+64.56%
	5 Years	0.215	-0.265	+6.66%
Annualised Return	Annualised	-	+2.28%	



Atlantic Navigation Hldg(S) Ltd. (5UL.SI)

ANALYSIS

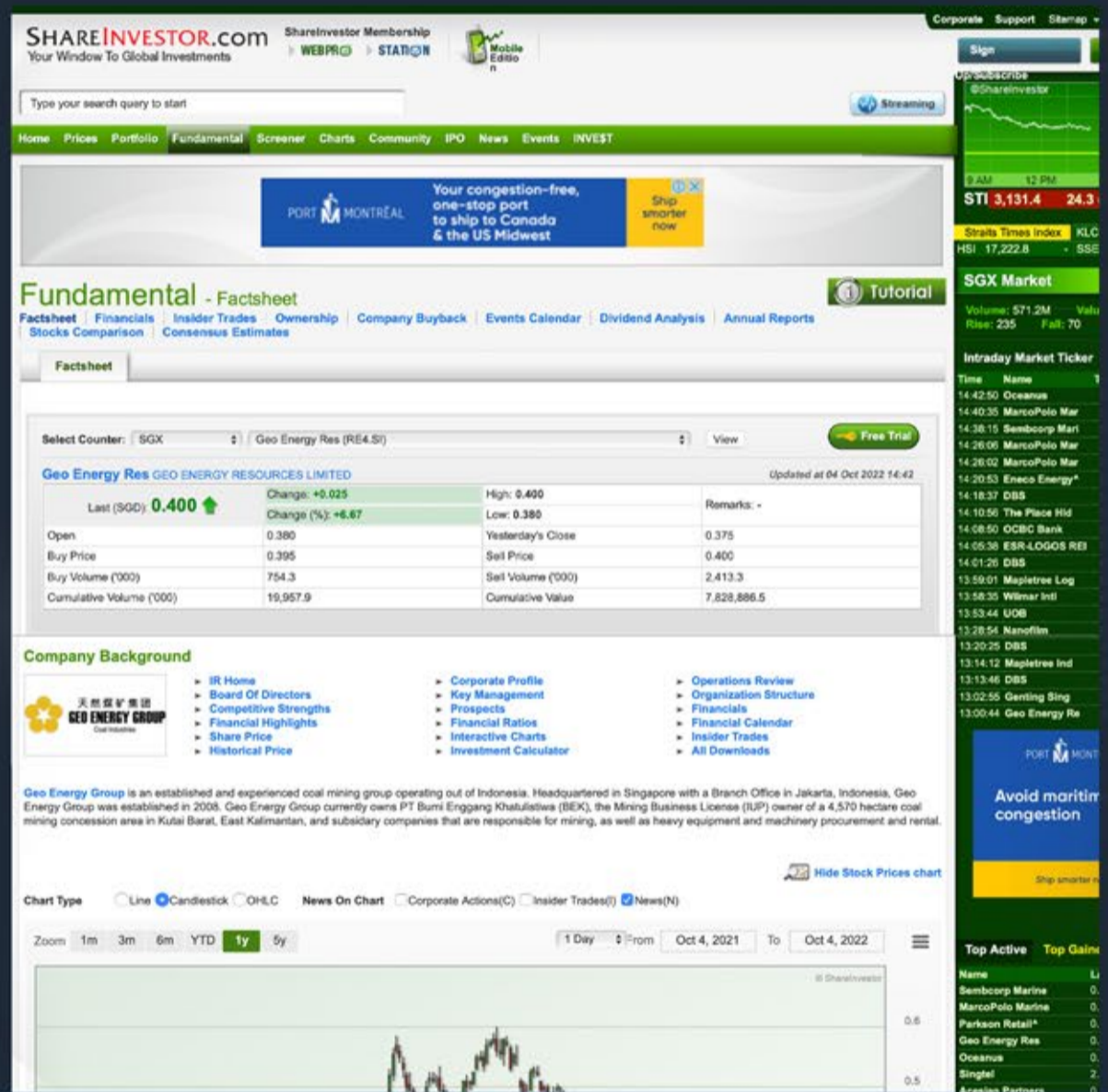


Period	Dividend Received	Capital Appreciation	Total Shareholder Return
Short Term Return	5 Days	-	+1.67%
	10 Days	-	+3.39%
	20 Days	-	+3.39%
Medium Term Return	3 Months	-	+3.39%
	6 Months	-	+206.80%
	1 Year	-	+276.54%
Long Term Return	2 Years	-	+563.04%
	3 Years	-	+689.29%
	5 Years	-	+134.62%
Annualised Return	Annualised	-	+18.60%

COMPANY ANALYSIS AT YOUR FINGERTIPS

Click the Analysis buttons to access the Factsheets of any company featured on the Hot Stocks (TA), Momentum-Up (TA), Up-Trending (TA), Dividend (FA), Growth (FA) & Value (FA) Stocks pages.

Invest with knowledge



- Company Background
- Candlestick Chart
- Current Price
- Key Statistics
- Peer Comparison
- Total Shareholder Returns
- Price Movements
- IPO performance
- Financial Reports
- Historical Price Data
- Latest News
- More



Value Stocks

Price & Total Shareholder Return (as at yesterday)



DEFINITION Share price of a company trading at a lower price as compared to its fundamentals (FA) such as financial performance and dividend, allowing it to be attractive to value investors.
CHART GUIDE Total Shareholder Return (TSR) combines share price appreciation and dividend distributions paid to show the total return to the shareholder expressed as a percentage.



ShareInvestor WebPro > Screener > Market Screener (FA & TA) > select SGX > add criteria

A. Criteria
 > click Add Criteria
 • Fundamental Analysis Conditions tab (i) Price Earnings Ratio
 • Fundamental Analysis Conditions tab >select (ii) CAGR of Net Earnings
 • Fundamental Analysis Conditions tab >select (iii) Net Debt To Equity
 • Fundamental Analysis Conditions tab >select (iv) Return On Equity (ROE)

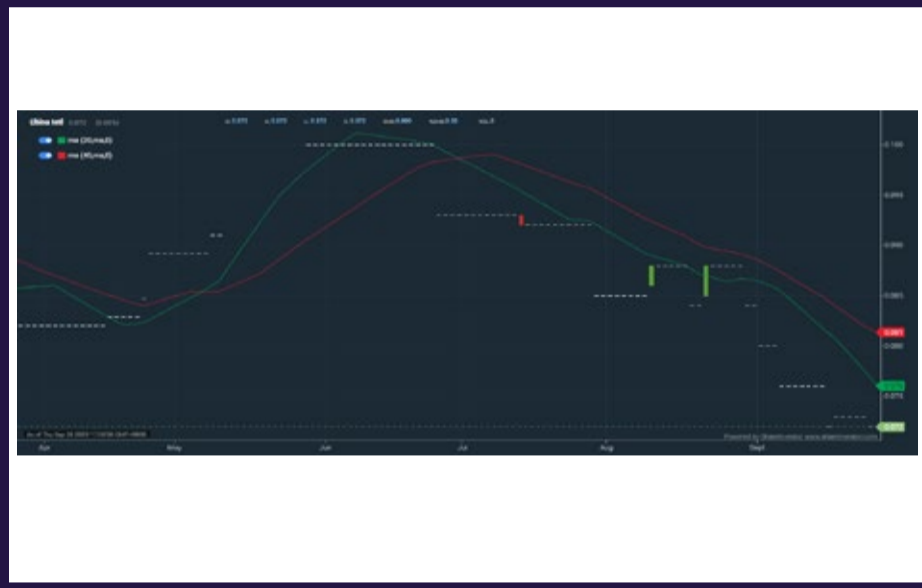
B. Conditions
 1. Price Earnings Ratio - select (less than) type (15) times now
 2. CAGR of Net Earnings - select (more than) type (10) % for the past type (3) financial year(s)
 3. Net Debt To Equity - select (less than) type (1) for the past select (1) financial year(s)
 4. Return On Equity (ROE) - select (more than) type (10) % for the past select (1) financial year(s)

> click Save Template > Create New Template type (Value Stock) > click Create
 > click Save Template as > select Value Companies > click Save
 > click Screen Now (may take a few minutes)
 > Mouse over stock name > Factsheet > looking for Total Shareholder Return
 > Mouse over stock name > Charts > click C2 Charts tab



China Intl Hldgs Ltd. (BEH.SI)

ANALYSIS

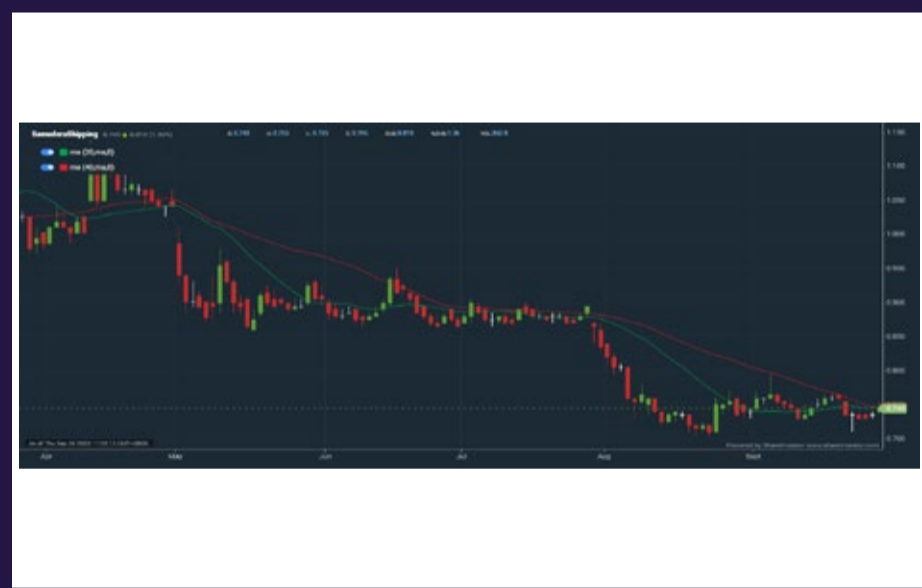


Period	Dividend Received	Capital Appreciation	Total Shareholder Return
Short Term Return	5 Days	-0.001	-1.37%
	10 Days	-0.004	-5.96%
	20 Days	-0.012	-14.29%
Medium Term Return	3 Months	-0.021	-22.58%
	6 Months	0.010	-
	1 Year	0.010	-15.88%
Long Term Return	2 Years	0.015	-34.89%
	3 Years	0.040	-68.52%
	5 Years	0.040	-68.89%
Annualised Return	Annualised	-	-26.42%



Samudera Shipping Line Ltd. (S56.SI)

ANALYSIS



Period	Dividend Received	Capital Appreciation	Total Shareholder Return
Short Term Return	5 Days	0.015	+1.87%
	10 Days	-0.010	+1.38%
	20 Days	-0.005	+5.88%
Medium Term Return	3 Months	0.020	+2.47%
	6 Months	0.270	+3.68%
	1 Year	0.270	+6.88%
Long Term Return	2 Years	0.475	+206.76%
	3 Years	0.491	+181.51%
	5 Years	0.505	+208.67%
Annualised Return	Annualised	-	+58.23%



Huating Global Limited (41B.SI)

ANALYSIS

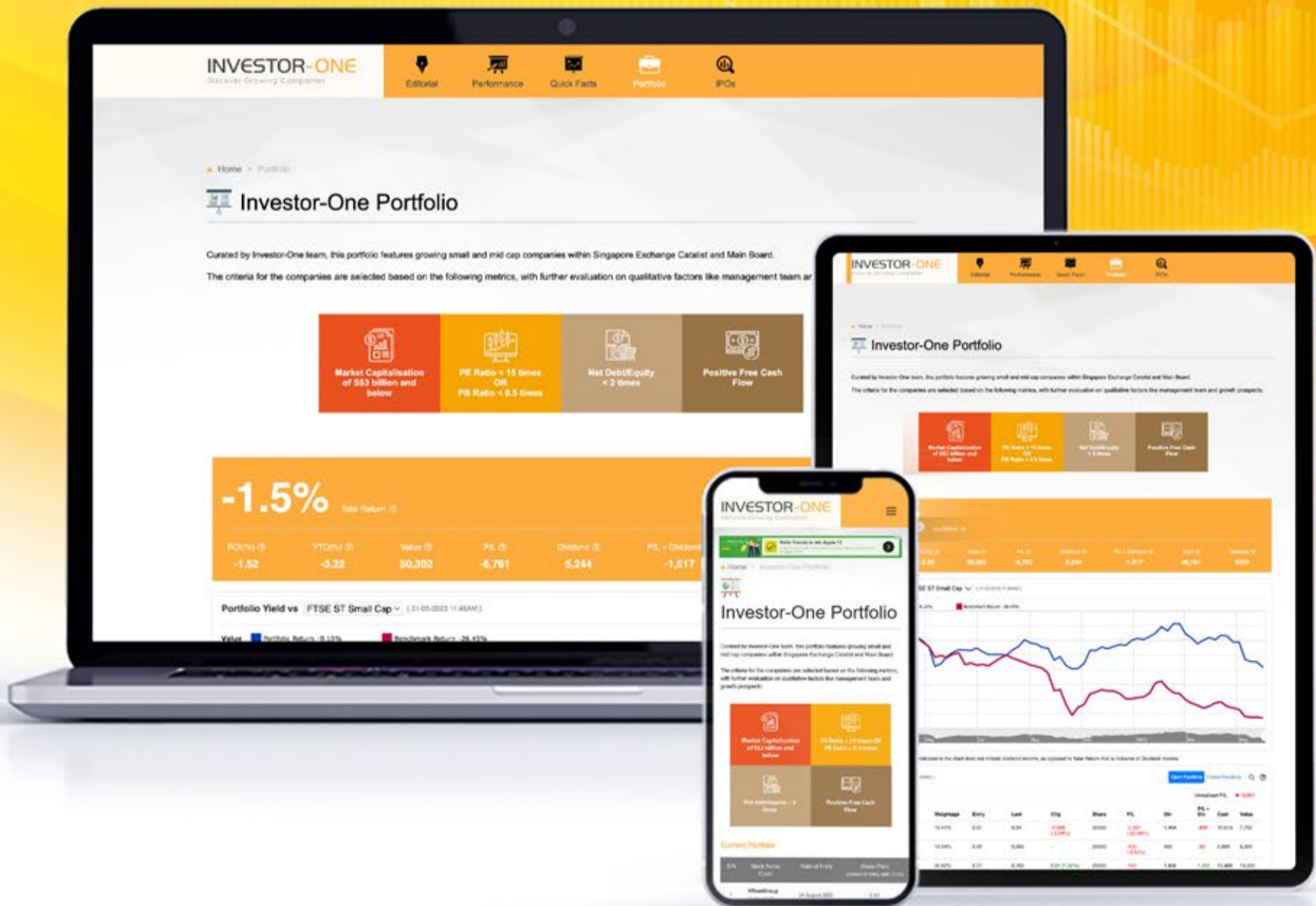


Period	Dividend Received	Capital Appreciation	Total Shareholder Return
Short Term Return	5 Days	-0.001	-0.73%
	10 Days	-0.001	-0.73%
	20 Days	0.003	-4.79%
Medium Term Return	3 Months	-0.014	-7.33%
	6 Months	0.008	+6.00%
	1 Year	0.008	+6.41%
Long Term Return	2 Years	0.011	+7.00%
	3 Years	0.011	+8.33%
	5 Years	0.011	-11.46%
Annualised Return	Annualised	-	-2.49%

INVESTOR-ONE PORTFOLIO

Curated and managed by the Investor-One team under ShareInvestor, this **free-to-access** portfolio will feature local small and mid-cap companies within Singapore Exchange's Mainboard and Catalyst.

Join us on the journey and watch as we manage a locally vested portfolio with a **fund of \$100,000**.



 **ENTER PORTFOLIO** >

Investor-One Portfolio

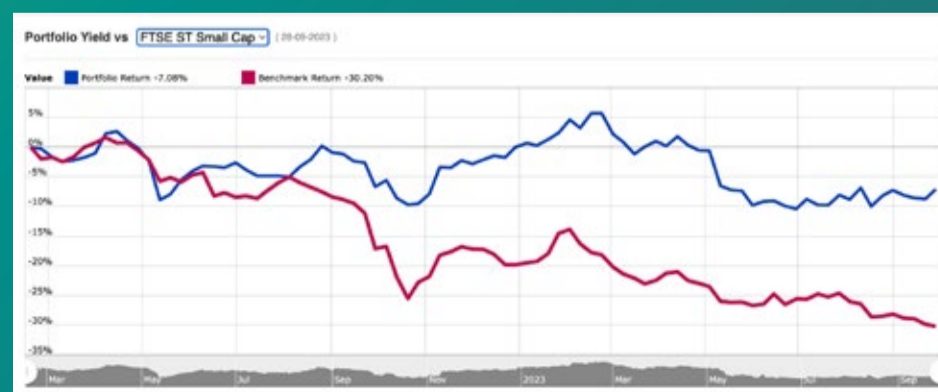
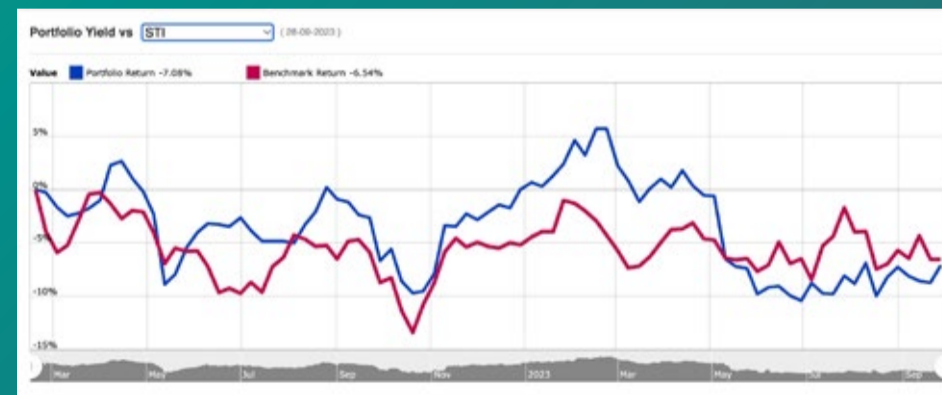
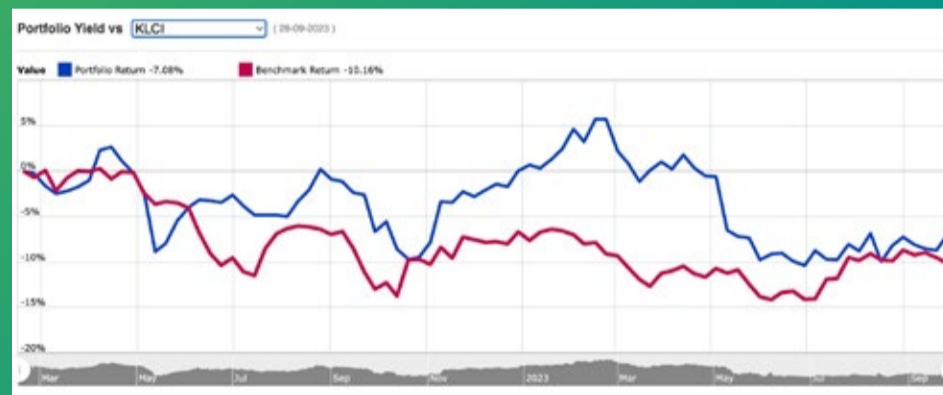
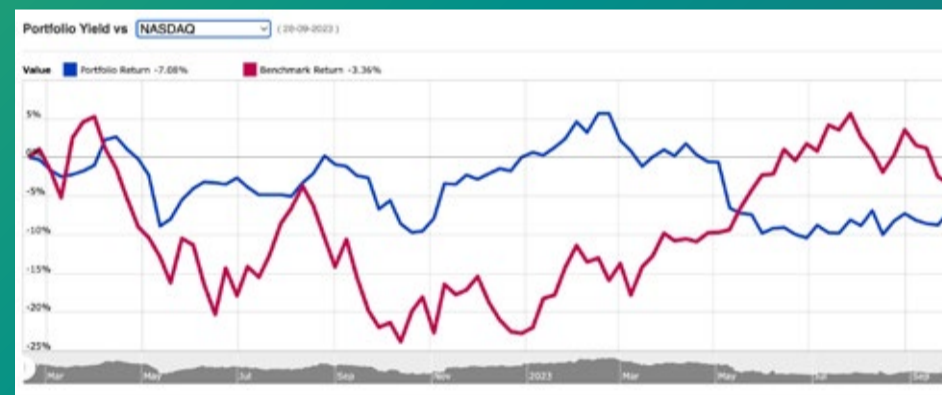
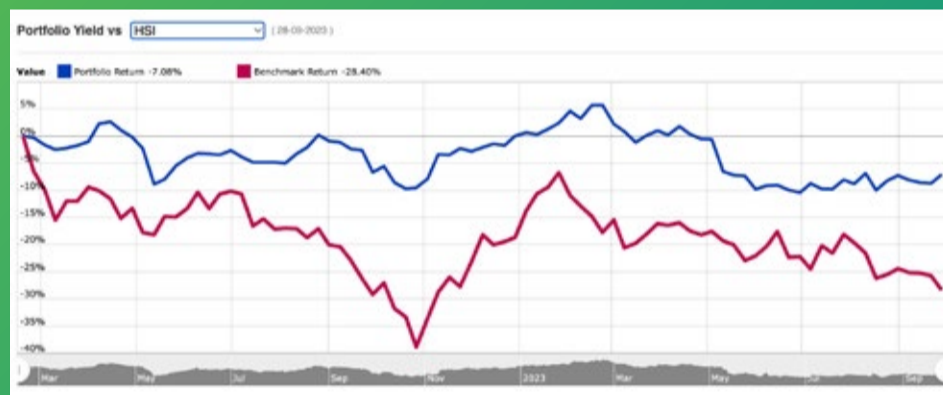
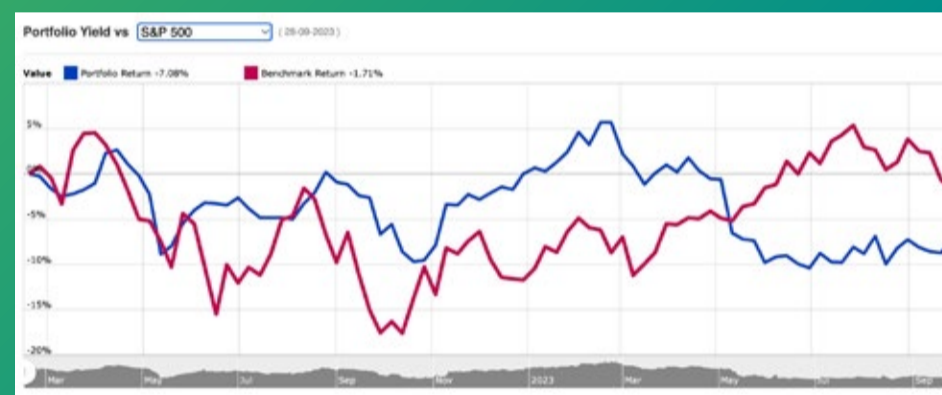
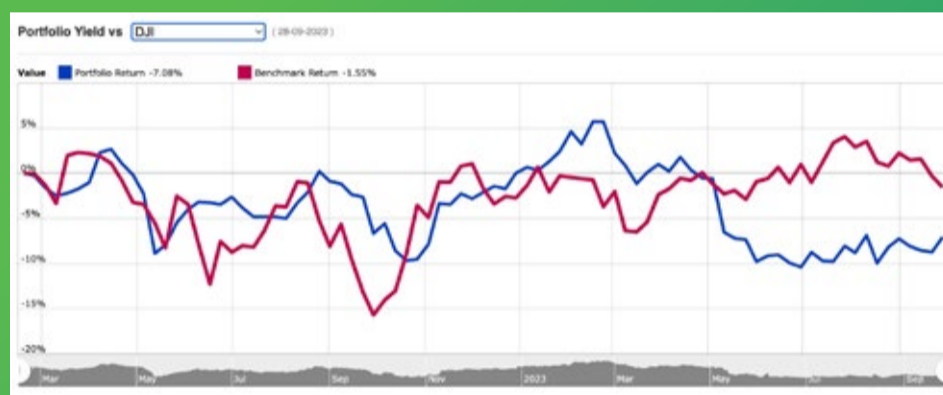
Curated by Investor-One team, this portfolio features growing small and mid cap companies within Singapore Exchange Catalist and Main Board.

The criteria for the companies are selected based on the following metrics, with further evaluation on qualitative factors like management team and growth prospects:

 <p>Market Capitalisation of S\$3 billion and below</p>	 <p>PE Ratio < 15 times OR PB Ratio < 0.5 times</p>
 <p>Net Debt/Equity < 2 times</p>	 <p>Positive Free Cash Flow</p>

1.5% Total Return

ROI(%)	YTD(%)	Value	P/L	Dividend	P/L + Dividend	Cash	Currency
1.50	1.69	60,842	-6,235	7,736	1,501	40,660	SGD



Note: The Portfolio Return indicated in the chart does not include dividend income, as opposed to Total Return that is inclusive of Dividend Income.

continued on next page...

INVESTOR-ONE

Discover Growing Companies

Summary (28-09-2023)

Open Positions

Unrealized P/L ↓ -3,335

Name↑	Weightage	Entry	Last	Chg	Share	P/L	Div	P/L + Div	Cost	Value
Geo Energy Res	14.07%	0.31	0.265	-	32300	-1,454 (-14.52%)	1,615	162	10,013	8,560
Hock Lian Seng	8.55%	0.29	0.26	-	20000	-600 (-10.34%)	450	-150	5,800	5,200
HRnetGroup	24.33%	0.77	0.74	-	20000	-600 (-3.90%)	1,774	1,174	15,400	14,800
Hyphens Pharma	23.01%	0.3	0.28	-	50000	-1,000 (-6.67%)	2,690	1,690	15,000	14,000
JEP Hldgs	18.05%	0.31	0.34	0.01 (3.03%)	32300	969 (9.68%)	-	969	10,013	10,982
Kimly	5.18%	0.4	0.315	-	10000	-850 (-21.25%)	224	-626	4,000	3,150
Nordic	6.82%	0.395	0.415	-	10000	200 (5.06%)	383	583	3,950	4,150

Summary (28-09-2023)

Closed Positions

Realized Profit ↓ -2,900

Name↑	Avg Buy	Avg Sell	Shares	Comm	P/L	P/L + Div	Proceeds
HG Metal	0.375	0.34	10000	-	-350	50	3,400
InnoTek	0.735	0.48	10000	-	-2,550	-2,350	4,800

Transaction (28-09-2023)

Action	Stock	Price	Shares	Exchange Rate	Comm	Amount	Date↓	Notes
Buy	JEP Hldgs	0.310	32300	N/A	0.00	10,013	4 Jul 2023	-
Sell	HG Metal	0.340	10000	N/A	0.00	3,400	13 Mar 2023	-
Sell	InnoTek	0.480	10000	N/A	0.00	4,800	13 Mar 2023	-
Buy	Geo Energy Res	0.310	32300	N/A	0.00	10,013	13 Mar 2023	-
Buy	HRnetGroup	0.770	20000	N/A	0.00	15,400	16 Feb 2022	-
Buy	Kimly	0.400	10000	N/A	0.00	4,000	16 Feb 2022	-
Buy	HG Metal	0.375	10000	N/A	0.00	3,750	16 Feb 2022	-
Buy	InnoTek	0.735	10000	N/A	0.00	7,350	16 Feb 2022	-
Buy	Nordic	0.395	10000	N/A	0.00	3,950	16 Feb 2022	-
Buy	Hyphens Pharma	0.300	50000	N/A	0.00	15,000	16 Feb 2022	-
Buy	Hock Lian Seng	0.290	20000	N/A	0.00	5,800	16 Feb 2022	-
Cash	Deposit	-	-	N/A	-	100,000	15 Feb 2022	-

continued on next page...

INVESTOR-ONE

Discover Growing Companies

Dividend (28-09-2023)

YTD

SGD 5276.70

TRAILING 12 MONTHS

SGD 5276.70

2022

SGD 2459.20

Stock	Ex-Date	Payable Date	Amt	Amt(SGD)	Total
HRnetGroup	30 Aug 2023	11 Sep 2023	SGD 0.0187	0.0187	374
Geo Energy Res	28 Aug 2023	06 Sep 2023	SGD 0.0050	0.0050	161.50
Nordic	17 Aug 2023	04 Sep 2023	SGD 0.0100	0.0100	100.10
Hyphens Pharma	16 Aug 2023	31 Aug 2023	SGD 0.0360	0.0360	1800
Kimly	27 Jun 2023	14 Jul 2023	SGD 0.0056	0.0056	56
Geo Energy Res	29 May 2023	08 Jun 2023	SGD 0.0050	0.0050	161.50
Hyphens Pharma	09 May 2023	24 May 2023	SGD 0.0111	0.0111	555
Geo Energy Res	08 May 2023	17 May 2023	SGD 0.0400	0.0400	1292
Nordic	07 May 2023	17 May 2023	SGD 0.0091	0.0091	90.60
Hock Lian Seng	07 May 2022	19 May 2022	SGD 0.0100	0.0100	200
HRnetGroup	03 May 2022	12 May 2022	SGD 0.0187	0.0187	374
Kimly	26 Jan 2022	08 Feb 2022	SGD 0.0112	0.0112	112
HRnetGroup	28 Aug 2022	06 Sep 2022	SGD 0.0213	0.0213	426
Nordic	16 Aug 2022	02 Sep 2022	SGD 0.0116	0.0116	116.20
Kimly	29 Jun 2022	15 Jul 2022	SGD 0.0056	0.0056	56
Hyphens Pharma	11 May 2022	25 May 2022	SGD 0.0067	0.0067	335
InnoTek	10 May 2022	25 May 2022	SGD 0.0200	0.0200	200
Hock Lian Seng	08 May 2022	20 May 2022	SGD 0.0125	0.0125	250
HRnetGroup	08 May 2022	18 May 2022	SGD 0.0300	0.0300	600
Nordic	05 May 2022	17 May 2022	SGD 0.0015	0.0015	15.20
Nordic	05 May 2022	17 May 2022	SGD 0.0061	0.0061	60.80
HG Metal	05 May 2022	20 May 2022	SGD 0.0400	0.0400	400

This portfolio is managed by Investor-One research team, under ShareInvestor.

Disclaimer:

1. The Investor-One portfolio is aggregated for educational and illustration purposes only. It is curated based on fixed financial parameters as indicated above. The investor-one team select their stocks solely base on the these fixed parameters. The featured companies are for information only and does not constitute investment advice.
2. The investor-one team is not licensed by any financial authority in Singapore. You should consult your Trading Representative or Financial Advisors before making any financial decisions.
3. Current Price, current value and gain/loss (%) under current portfolio are based on 10 minutes delayed data.
4. Purchase Price and Exit Price are based on EOD price.
5. The views and opinions expressed does not necessarily reflect those of ShareInvestor Pte Ltd nor any related companies of ShareInvestor Pte Ltd.

COMPANY SPOTLIGHT

4 Things to Keep in Mind When Choosing Sustainable Dividend Yields

Vincent Wong, Investor-One / Tue, Sep 26, 8:00 PM



Who wouldn't appreciate a good passive income?

For Singaporean investors, one of the most effective ways to secure a robust passive income is by investing in stocks with attractive dividend yields. These dividends offer a tangible return on investment, reflecting the company's profitability and financial health. However, it's essential to note that stocks with the highest yields aren't always the best choices. To truly optimize returns while mitigating risks, investors must delve deeper and evaluate a range of critical factors.

continued on next page...

continued... [4 Things to Keep in Mind When Choosing Sustainable Dividend Yields]

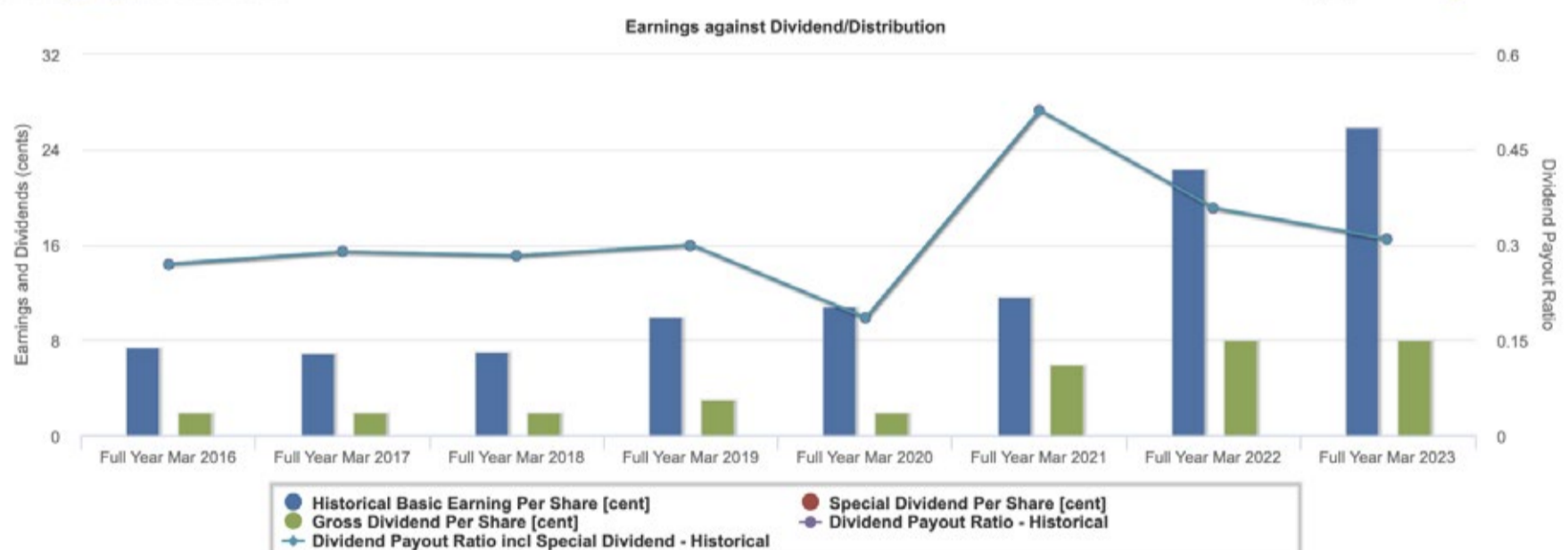
1. Economic Moats: A Company's Defensive Power

An economic moat is a company's sustained competitive advantage over its rivals. Companies with good economic moats could ward off competition, ensuring consistent profitability. This advantage could be a unique strength or capability that allows a company to cater to market needs better than others. Companies with wide moats, including many of Singapore's top firms, are often in a prime position to provide consistent and reliable dividends.

Take The Hour Glass ([SGX: AGS](#)) as an example. its "moat" often comes from exclusive relationships with luxury suppliers like Rolex and Patek Philippe. Such partnerships grant them access to select high-end models, creating a barrier for potential competitors.

Read Also: [How Can a Watch Retail in SGX Performed 100x Better than STI Index](#)

Earnings against Dividend



The Hour Glass Dividend Payout Trend

2. Beware of the “Value Trap” with Misleading High Yield

While high yields can be enticing, they can sometimes be deceptive. A soaring yield might be the result of a plummeting stock price, hinting at potential company issues. Such stocks may lure investors into "dividend traps," where an initially attractive yield dwindles due to dividend reductions.

Take some office REITs as an example. Their current high dividend yields might be a result of declining stock prices, influenced by factors like increased borrowing costs, cap rate changes, and an oversupply of office

continued on next page...

continued... [4 Things to Keep in Mind When Choosing Sustainable Dividend Yields]

spaces. The dividends of these REITs may face further cuts, leading to not only a loss of passive income but also a potential capital loss for investors.

Read Also: [The Architect of Modern REITs: Sam Zell and the Grave Dancer's Last Waltz](#)

3. The Strength of Financial Foundations

The financial health of a company is crucial when evaluating its dividend potential. Investors should favor companies with robust balance sheets, especially those with minimal debt. High leverage or significant interest expenses can be warning signs. It's also insightful to observe a company's performance during economic downturns. Companies that have either maintained or grown their dividends in such times often prove more resilient.

Take the local grocery chain, Sheng Siong ([SGX: OV8](#)), as an example. By capitalizing on its extensive network, it can source inventory efficiently and provide competitively priced goods to residents nearby. This advantage bolstered its profits and dividends, even during challenging times such as the pandemic.

Earnings against Dividend

Hide EPS against DPS chart



Sheng Siong Dividend Payout Trend

Moreover, the business is cash-rich with a cash conversion cycle of negative 27.986, which means that it does not need to borrow much for its working capital and expansion due to good cash flow. That results in a healthy balance sheet with low debt-to-assets of 10%.

continued on next page...

continued... [4 Things to Keep in Mind When Choosing Sustainable Dividend Yields]

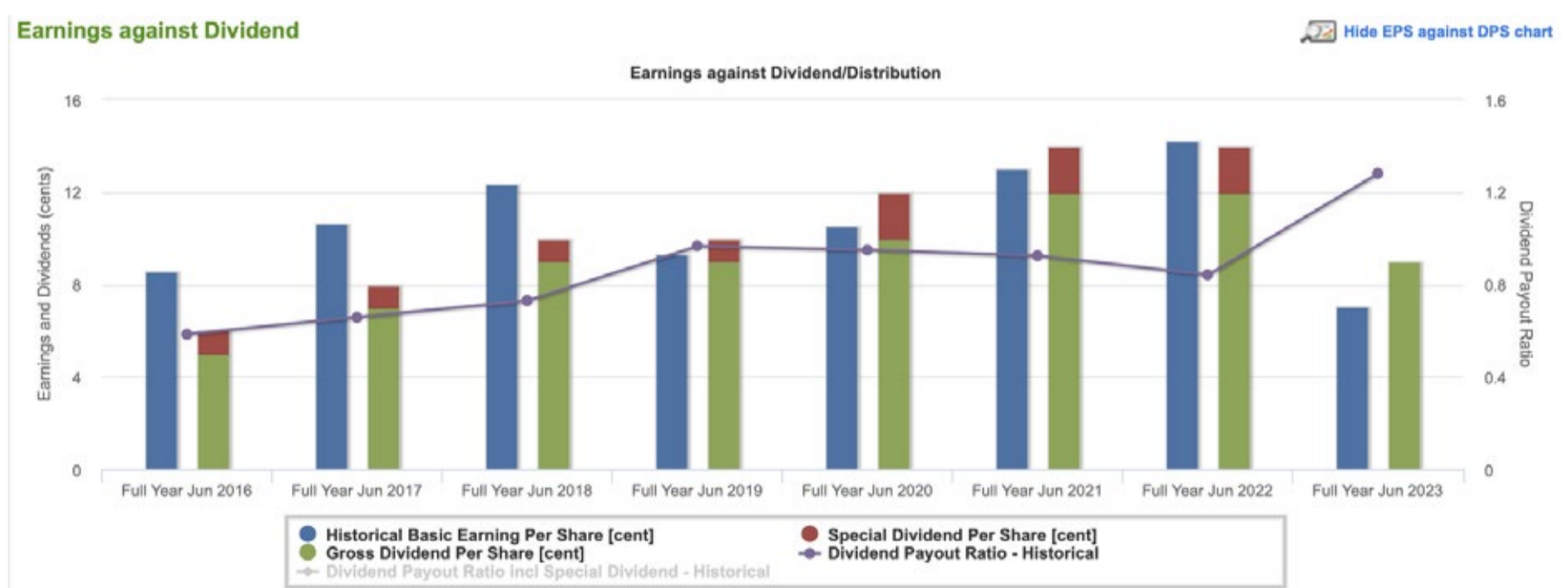
4. Management's Commitment to Dividends

A company's leadership stance on dividends can be revealing. Companies with leadership that supports dividend strategies often remain committed to consistent payouts, even during tough times. Investors can gauge this by looking at their historical dividend payout ratio, calculated as the annual dividend paid divided by the earnings per share.

A low payout ratio suggests that a company uses only a small portion of its earnings for dividends, indicating room for future growth. In theory, the stocks with a low dividend payout ratio could see their earnings drop by 40% and still maintain their current dividend. But in practice, managements are more likely to reduce or even eliminate dividends to preserve capital amidst uncertainties.

Micro-Mechanics ([SGX: 5DD](#)), a Singapore-based semiconductor company, has been known for its high dividend payout ratio; it distributed all its profit to the shareholders in the past five financial years. It demonstrated the management's strong commitment to returning value to shareholders.

Read Also: [Micro-Mechanics Navigates Semiconductor Downturn, Sets Goals for FY2024 Amid Challenges](#)



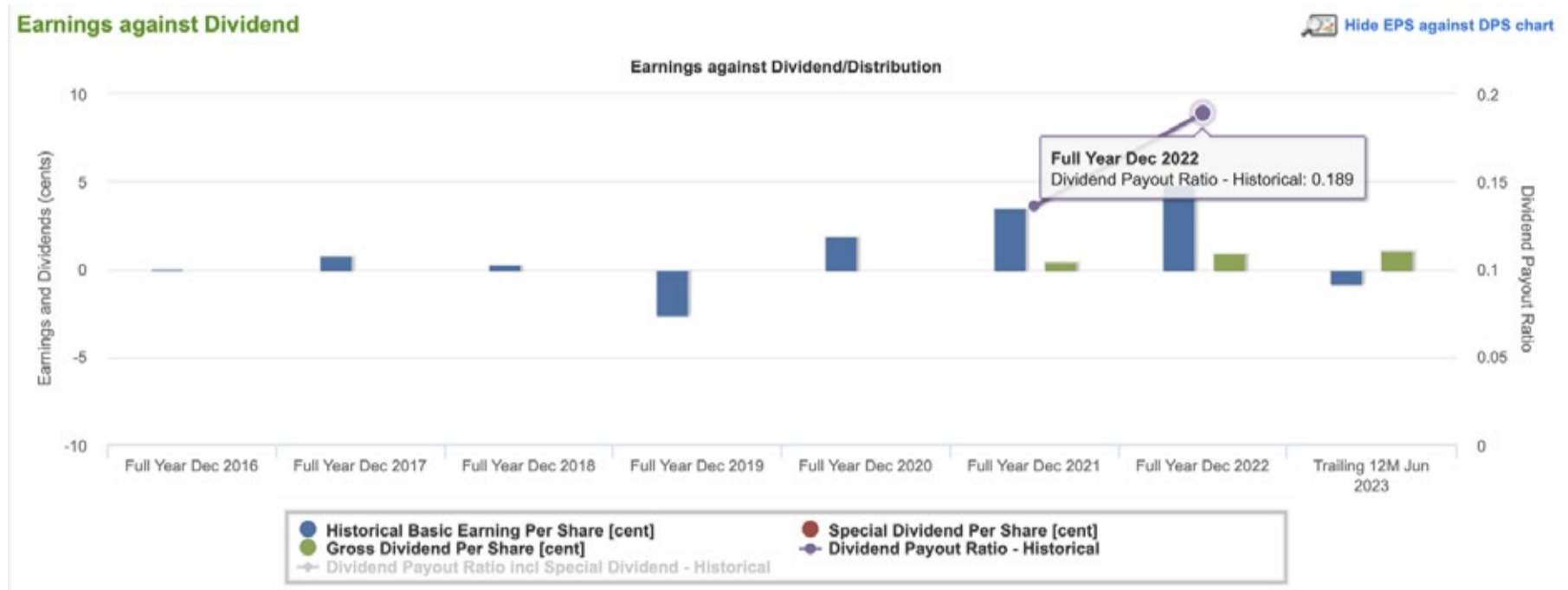
Micro-Mechanic Dividend Payout Trend

On the other hand, although JiuTian Chemical ([SGX: C8R](#)) had a net cash of S\$200 million as of 31 December 2022, more than its market capitalization at that time and an extremely low PE ratio, the company hesitated to give out dividends. It only gave 13% and 19% of its profit in FY2021 and FY2022

continued on next page...

continued... [4 Things to Keep in Mind When Choosing Sustainable Dividend Yields]

respectively when the company was profitable. Such a conservative approach might deter investors seeking a reliable and sustainable passive income stream.



JiuTian Chemical Dividend Payout Trend

While the appeal of passive income through high dividend-yielding stocks is undeniable, investors should approach it with due diligence. From understanding the significance of economic moats and avoiding the pitfalls of misleading high yields to recognizing the importance of a company's financial foundation and management's stance on dividends, there are multifaceted considerations at play.

Singaporean investors, in their pursuit of sustainable passive income, must not only be attracted by the immediate returns but also be vigilant about the long-term viability and commitment of a company to its shareholders. By doing so, they can ensure that their investments not only provide immediate gratification but also stand the test of time, guaranteeing a consistent and reliable income stream for years to come.

To keep these insights at your fingertips, subscribe and share our updates!

SHAREINVESTOR WEBPRO

Stock Market Data At Your Fingertips

Powerful browser-based market analytics platform. Access from anywhere

click here to start your 9 Day free trial

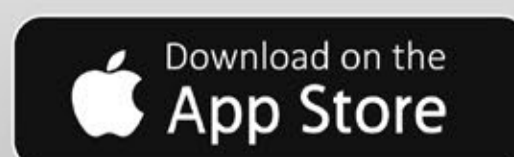
Tools shown: Intrinsic Value Calculator, Consensus Estimates, C2 Charts (Customizable & Comprehensive), Advance Market Screener, Ownership Tracker.

All New **ShareInvestor Mobile App**



**Charting | Market | Watchlist | News | Prices | Alerts
Time & Sales | Key Statistics | More**

Now available on



TOP SIGNIFICANT INSIDER ACTIVITY



Data extracted from WebPro, accurate as at yesterday

Effective Change Date (Notice Date)	Stock Name	Buyer / Seller Name (Classification ^a)	Security Types ^b	Acquired / (Disposed) ['000]			Price	Closing Price ^d	No. of Shares After Trade ['000]			
				Direct	Deemed	Total			Direct	Deemed	Total	% Held ^c
27 Sep 2023 (27 Sep 2023)	Golden Energy	Duchess Avenue Pte. Ltd. ("Duchess") [SSH]	S/U		21,123	21,123	0.181	0.180		2,638,100	2,638,100	100.000
27 Sep 2023 (27 Sep 2023)	Golden Energy	Lanny Tranku [SSH]	S/U		21,123	21,123	0.181	0.180		2,638,100	2,638,100	100.000
27 Sep 2023 (27 Sep 2023)	Golden Energy	Star Success Pte Ltd [SSH]	S/U		21,123	21,123	0.181	0.180		2,638,100	2,638,100	100.000
25 Sep 2023 (27 Sep 2023)	Hiap Tong	Ong Lim Wan @ Ong Teck Meng [Dir/CEO]	S/U	355	7,908	8,263	0.120	0.136	8,871	199,793	208,664	65.750
25 Sep 2023 (27 Sep 2023)	Hiap Tong	Tembusu Asia Holdings Pte Ltd [SSH]	S/U	7,908		7,908	0.120	0.136	197,693		197,693	62.290
25 Sep 2023 (27 Sep 2023)	Hiap Tong	Ong Lim San [SSH]	S/U		7,908	7,908	0.120	0.136	1,900	197,693	199,593	62.890
29 Aug 2023 (27 Sep 2023)	RE&S Hldg	Lim Shyang Zheng (Lin XiangZheng) [Dir/CEO]	S/U		166	166		0.265	7,834	166	8,000	2.260
22 Sep 2023 (27 Sep 2023)	Revez	CHNG HEOW HO @ VICTOR CHNG [SSH]	S/U	14,156		14,156		0.115	14,156		14,156	5.376
27 Sep 2023 (27 Sep 2023)	Wilmar Intl	Kuok Khoon Hong [Dir/CEO]	S/U		940	940		3.710	2,995	836,910	839,905	13.460
27 Sep 2023 (27 Sep 2023)	Wing Tai	Cheng Wai Keung [Dir/CEO]	S/U		68	68		1.380	214	463,541	463,755	61.020
27 Sep 2023 (27 Sep 2023)	Envictus	Mah Weng Choong [Dir/CEO]	S/U	-5,000		-5,000		0.255	10,117		10,117	3.330
27 Sep 2023 (27 Sep 2023)	Envictus	Dato' Jaya J B Tan [Dir/CEO]	S/U	12		5,000		0.255	72,363	1,327	73,690	24.230
26 Sep 2023 (27 Sep 2023)	YKGI	Seah Boon Lock [Dir/CEO]	S/U		915	915		0.120		331,475	331,475	78.000
25 Sep 2023 (27 Sep 2023)	Vertex SPAC	BNY Mellon Corporate Trustee Services Limited [SSH]	S/U	1,959		1,959		0.071	2,474		2,474	5.946
25 Sep 2023 (27 Sep 2023)	Vertex SPAC	The Bank of New York Mellon Corporation [SSH]	S/U		2,053	2,053		0.071		2,568	2,568	6.172
25 Sep 2023 (27 Sep 2023)	Vertex SPAC	The Bank of New York Mellon [SSH]	S/U	94	1,959	2,053		0.071	94	2,474	2,568	6.172
25 Sep 2023 (27 Sep 2023)	Vertex SPAC	BNY International Financing Corporation [SSH]	S/U		1,959	1,959		0.071		2,474	2,474	5.946
22 Sep 2023 (27 Sep 2023)	IHH	EMPLOYEES PROVIDENT FUND BOARD [SSH]	S/U	1,753		1,753		1.740	931,983		931,983	10.582
26 Sep 2023 (27 Sep 2023)	YKGI	Seah & Family Pte. Ltd. [SSH]	S/U	915		915		0.120	331,475		331,475	78.000
26 Sep 2023 (27 Sep 2023)	Alset	Chan Heng Fai [Dir/CEO]	S/U		50	50		0.040		3,111,623	3,111,623	89.090
26 Sep 2023 (27 Sep 2023)	Alset	Alset Business Development Pte. Ltd. [SSH]	S/U	50		50		0.040	2,981,442		2,981,442	85.360
26 Sep 2023 (27 Sep 2023)	Frencken	DATO' GOOI SOON CHAI [Dir/CEO]	S/U		20	20		1.080	7,417	93,663	101,080	23.670
20 Sep 2023 (27 Sep 2023)	UOA	Kong Chong Soon @ Chi Suim [Dir/CEO]	S/U		78	78		0.470		1,176,938	1,176,938	
25 Sep 2023 (26 Sep 2023)	First Sponsor	Ho Han Khoon (Alternate Director to Ho Han Leong Calvin) [Dir/CEO]	S/U	40		40		1.250	4,040	286,764	290,804	31.470
26 Sep 2023 (26 Sep 2023)	Wing Tai	Cheng Wai Keung [Dir/CEO]	S/U		28	28		1.410	214	463,473	463,687	61.010
25 Sep 2023 (26 Sep 2023)	TrickleStar	LING HEE KEAT [Dir/CEO]	S/U	-180		-180		0.180	1,754	2,074	3,828	4.580
25 Sep 2023 (26 Sep 2023)	YKGI	Seah Boon Lock [Dir/CEO]	S/U		115	115		0.117		330,560	330,560	77.780
25 Sep 2023 (26 Sep 2023)	YKGI	Seah & Family Pte. Ltd. [SSH]	S/U	115		115		0.117	330,560		330,560	77.780
21 Sep 2023 (26 Sep 2023)	IHH	EMPLOYEES PROVIDENT FUND BOARD [SSH]	S/U	1,739		1,739		1.740	930,230		930,230	10.562
22 Sep 2023 (26 Sep 2023)	Prudential USD	Lilian Ng [Dir/CEO]	S/U			0.22		10.010				

Access WebPro to view more insider trades

Disclaimer: The information on this page is provided as a service to readers. It does not constitute financial advice and/or any investment recommendations. Past performance is not indicative of future results. We assume no liability for damages resulting from or arising out of the use of such information. It would be best if you did your own research to make your personal investment decisions wisely or consult a licenced investment advisor.

IR Announcements



TOTM Technologies: InterBio Bags 3 New Contracts Including A System Maintenance Contract Worth US\$5.1 Million From Indonesia's Ministry Of Home Affairs.

Group secured an Annual Technical Support contract for the maintenance of Indonesia's National Identity System for approximately US\$1.3 million from September to December 2023. Group had previously been providing ATS services to the same customer for approximately US\$3.1 million from January to August 2023. Group won two tenders for the deployment of additional Automated Biometrics Identification System for Indonesia's National ID system with a combined contract value of US\$740,000 from June to October 2023.

<http://totmtechnologies.listedcompany.com/news.html/id/2458587>

CapitaLand Investment: Flagship Core-Plus Private Fund Exceeds S\$1 Billion FUM With Acquisition Of Grade A Logistics Property.

CapitaLand Investment Limited's flagship regional core-plus fund, CapitaLand Open End Real Estate Fund, has acquired a newly completed, Grade A logistics property in South Korea for S\$112 million (US\$82.5 million). The acquisition will bring COREF's funds under management to over S\$1 billion. The high specifications logistics property, Anseong Seongeun Logistics Centre, comprises two four-storey buildings with basement floors totalling 60,407 square metres of net leasable area.

<http://cli.listedcompany.com/news.html/id/2458493>



LHN: Reports Strong Momentum In Its Core Business Segments, Eyes Steady Growth For Rest Of 2HFY2023.

Coliwoo reports strong occupancies with total keys of 2,064 under management as of end-3QFY2023. Secured 57 facilities management contracts since May 2023. Divestments that include the disposal of LHN Logistics will boost cashflows in the second half of the financial year ending 30 September 2023.

<http://lhngroup.listedcompany.com/news.html/id/2458368>

SMI Vantage: Signs Offer To Rent Agreement In Sarawak.

SMI Vantage Limited is pleased to announce the signing of an Offer to Rent Agreement by its wholly-owned subsidiary SMI CS Pte Ltd. The Agreement allows SMI Vantage to set up its Bitcoin mining business in Sarawak. SMI Vantage will fit out the facility with state-of-the-art Bitcoin mining machines housed in containerised shells. The new machines together with the lower cost of electricity enables the Company to mine Bitcoin more cost-effectively. SMI Vantage will begin the process of installing the first of its two containerised mining rigs and expects to commence mining Bitcoin in Q3, 2023.

<http://sin-mi.listedcompany.com/news.html/id/2458299>



Learn how to identify Hot Stocks using Technical Analysis (TA) and Fundamental Analysis (FA)



SIGN UP FOR Invest NOW

[Click Here](#)

Get market-moving news and analysis. Regular columns include **Behind The Action** and **From The Observer**

It's FREE!!

Leaderboard • Hot Stocks • Momentum Up Stocks • Uptrending Stocks
Value Stocks • Growth Stocks • Dividend Stocks • Insider Trade
Investor Relations • Regional Markets

Scan or click me

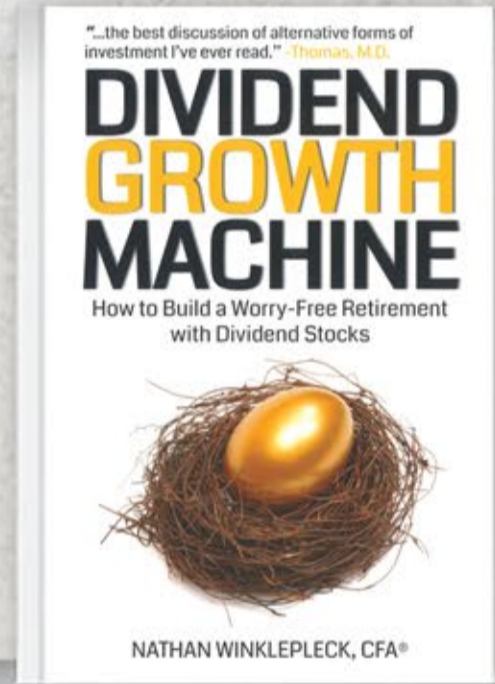
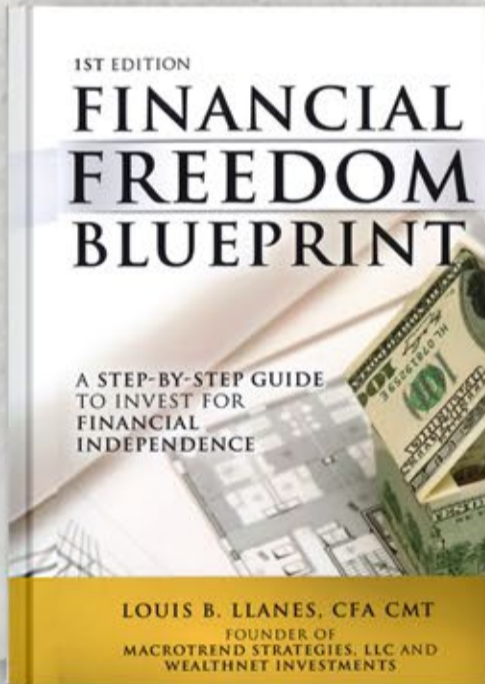
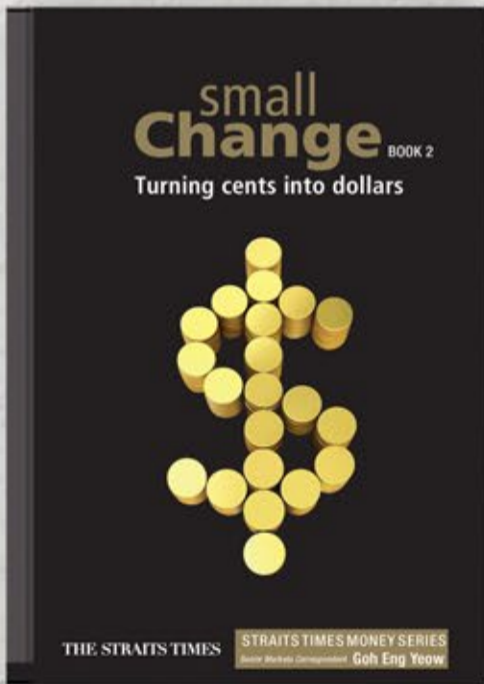
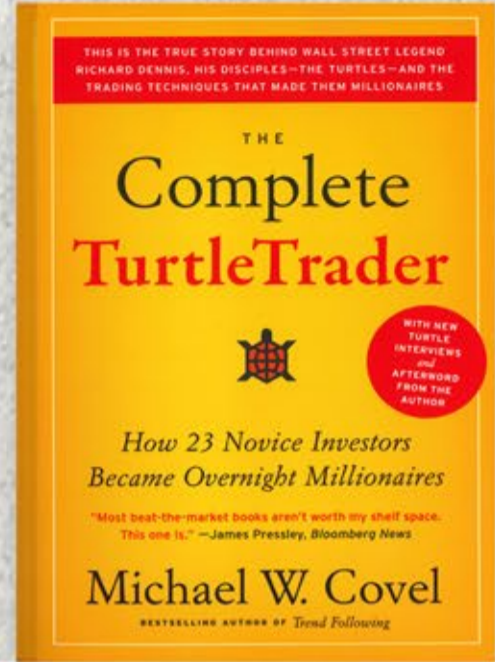
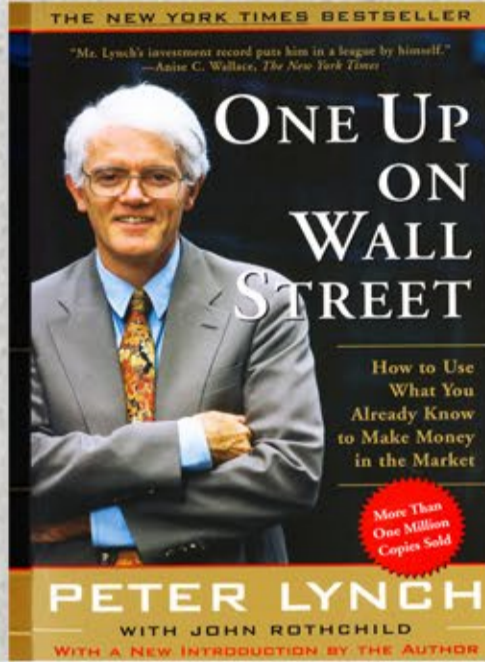
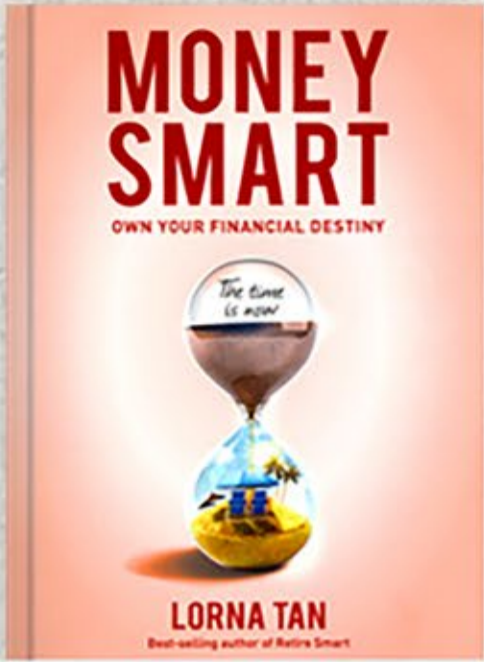


Via email, weekly

INVESTMENT BOOKS

Click on book for more details

INVESTMENT BOOKS

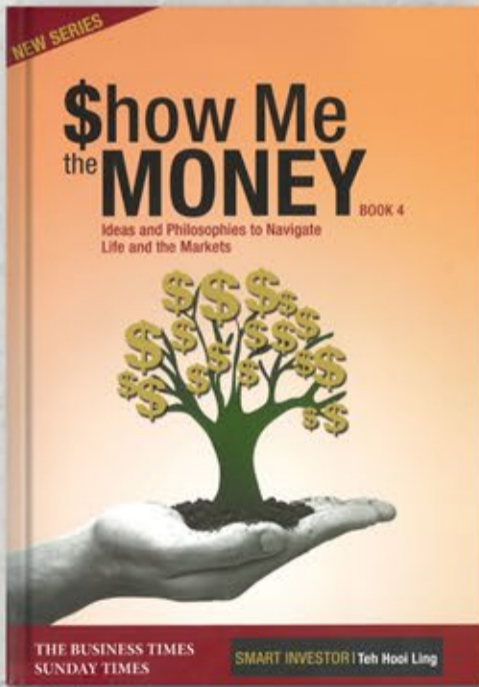
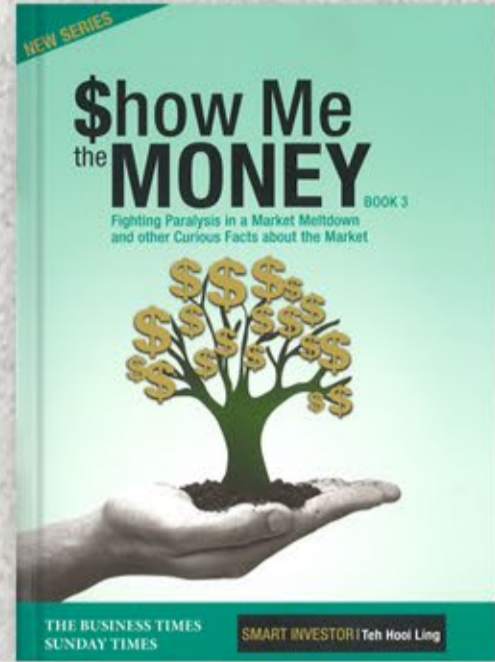
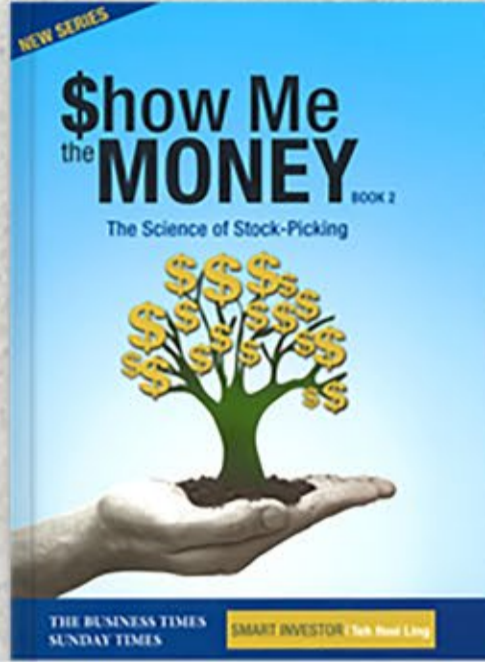
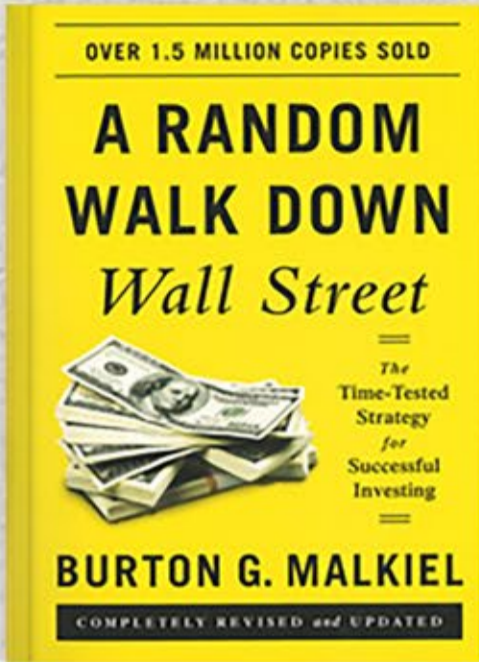


View more Books >

INVESTMENT BOOKS

Click on book for more details

INVESTMENT BOOKS



View more Books >