

# Invest

A Weekly e-Publication by [SHAREINVESTOR.com](https://www.shareinvestor.com)

Data and Investing Ideas

ISSUE  
**50**  
28 JULY 2023

Scan or click me



Via email, every Friday

## COMPANY SPOTLIGHT

# POWERMATIC DATA SYSTEM: A DEEP DIVE INTO PROPERTY REDEVELOPMENT AND THE GROWING BUSINESS

See  
more on  
pages  
**16-23**

## ALSO

### TOP STOCKS OF THE WEEK

- Dividend Stocks – on page 06
- Growth Stocks – on page 08
- Value Stocks – on page 10

### Investor-One Portfolio

See more on pages 12-15

### IR Announcements

See more on page 25



02 MARKET AT A GLANCE

04 REGIONAL MARKETS

06 DIVIDEND STOCKS

08 GROWTH STOCKS

10 VALUE STOCKS

12 INVESTOR-ONE PORTFOLIO

16 COMPANY SPOTLIGHT: POWERMATIC  
DATA SYSTEM: A DEEP DIVE INTO  
PROPERTY REDEVELOPMENT AND THE  
GROWING BUSINESS

24 INSIDER TRADES

25 IR ANNOUNCEMENTS

26 INVESTMENT BOOKS



# SHAREINVESTOR®

Invest with Knowledge



CREDITS SHAREINVESTOR

## INVESTOR PLATFORMS

### GENERAL MANAGER

Ethan Ho

### RESEARCH ANALYST

Vincent Wong

## MARKETING & SALES

### MARKETING MANAGER

Bhavani Bala

### SALES MANAGER

Nigel Lim

### ADMIN

Gillian Ong

Alwin Liow

Dawn Ong

## CONTENT

### DIRECTOR

Edward Stanislaus

## INVESTOR RELATIONS

### DIRECTOR

Zhao Yanjing

[yanjing.zhao@shareinvestor.com](mailto:yanjing.zhao@shareinvestor.com)

### SENIOR MANAGER

Vivien Ong

[vivien.ong@shareinvestor.com](mailto:vivien.ong@shareinvestor.com)

### SENIOR QC EXECUTIVE

Poh Lam Huat

[lamhuat@shareinvestor.com](mailto:lamhuat@shareinvestor.com)

## SHAREINVESTOR HOLDINGS

### BOARD OF DIRECTORS

#### CHAIRMAN

Patrick Daniel

#### GROUP CEO

Christopher Lee

#### GROUP COO

Lim Dau Hee

#### GROUP CFO

Teo Siew May

#### GROUP MD

Shanison Lin

## SHAREINVESTOR PTE LTD

151 Lorong Chuan #02-02

New Tech Park (Lobby B)

Singapore 556741

T (65) 6958 8000

F (65) 6958 8044

E [admin@shareinvestor.com](mailto:admin@shareinvestor.com)

W [www.ShareInvestor.com](http://www.ShareInvestor.com)

Advertise with us

**Disclaimer:**  
The services information and data made available on or accessible via this newsletter including facts, views, advice, analyses, opinions and recommendations of individuals and organisations are for general information purposes only.

It is not intended as investment advice and must not be relied upon as such. ShareInvestor Pte Ltd and its third party information providers are not giving or purporting to give or representing or holding themselves out as giving financial, investment, tax, legal and other professional advice.

Advice from a securities professional is strongly advised.

# Market at a Glance

Over 5 trading days as at yesterday

[www.shareinvestor.com](http://www.shareinvestor.com)

market data at your fingertips



ShareInvestor WebPro ([www.shareinvestor.com](http://www.shareinvestor.com))

Prices > Stock Prices > SGX > click Stocks tab

1. mouse over Ranking > select Top Active > mouse over Column Layout > select Edit Customs > select Name > select Volume > select Last Done Price > Mouse Over Column Layout > select Custom
2. mouse over Ranking > select Top Turnover > mouse over Column Layout > select Edit Customs > select Name > select Last Done Price > select Value > Mouse Over Column Layout > select Custom
3. mouse over Ranking > select Top Gainers (Over 5 Trading Days) > mouse over

Column Layout > select Edit Customs > select Name > select Last Done Price > select 5 Days Change > select 5 Days % Change > Mouse Over Column Layout > select Custom

4. mouse over Ranking > select Top Losers (Over 5 Trading Days)
5. mouse over Ranking > select Top % Gainers (Over 5 Trading Days)
6. mouse over Ranking > select Top % Losers (Over 5 Trading Days)

## Singapore Top Actives

(as at yesterday)

Name	Last Done	Volume
Seatrium	0.146	275,740.8
ThaiBev	0.595	48,487.8
HSI 22000MBeCW230928	0.041	38,412.0
Golden Agri-Res	0.240	27,374.2
Genting Sing	0.945	27,245.0
MarcoPolo Marine	0.054	26,452.3
HSI 21600MBeCW230830	0.031	24,458.0
Oceanus	0.012	22,838.8
YZJ Fin Hldg	0.330	19,780.4
Mapletree Log Tr	1.720	19,578.4

## Top Gainers

(over 5 Trading days as at yesterday)

Name	Last Done	5 Days Chg
SPDR DJIA US\$	351.200	11.970
SPDR S&P500 US\$	459.890	4.890
NIO Inc. USD OV	13.610	3.050
KepCorp 5xLongSG230920	12.120	2.840
Nasdaq 7xLongUB250922	6.610	1.560
XT SingGovBond SG\$	146.660	1.410
XT MSCHINA S\$	19.710	1.070
DBS	33.760	1.020
NA12100N 420401	92.000	1.000
Sunny 5xShortSG240205	1.915	0.870

## Top Losers

(over 5 Trading days as at yesterday)

Name	Last Done	5 Days Chg
JMH USD	49.180	-0.880
GLD SG\$	242.820	-0.530
Meituan 5xShortSG231220	0.740	-0.495
Sunny 5xLongSG241126	0.185	-0.485
HKEx 5xShortUB250127	1.225	-0.475
LiNing 5xShortUB250321	1.105	-0.455
Geely 5xShortSG241209	0.240	-0.375
HSTECH 7xShortSG240402	0.445	-0.370
JD 5xShortUB250127	0.700	-0.350
Sembcorp 5xLongSG250515	3.500	-0.330

## Singapore Top Turnover

(as at yesterday)

Name	Last Done	Value
DBS	33.760	162,829,728
OCBC Bank	13.070	147,164,571
UOB	28.920	140,277,814
Singtel	2.650	46,500,124
SIA	7.520	43,110,135
Seatrium	0.146	40,165,675
Sembcorp Ind	5.530	40,143,154
Mapletree Log Tr	1.720	33,684,939
Keppel Corp	6.960	33,287,187
CapitaLandInvest	3.430	31,691,845

## Top % Gainers

(over 5 Trading days as at yesterday)

Name	Last Done	5 Days % Chg
NIO MBeCW230920	0.036	111.76
HSI 21600MBeCW230830	0.031	106.67
LifeBrandz	0.002	100.00
MSM Intl	0.059	90.32
NIO MBeCW231122	0.200	86.92
HSI 20800MBeCW230830	0.052	85.71
Vertex SPAC W291231	0.130	85.71
Sunny 5xShortSG240205	1.915	83.25
Geely 5xLongUB250930	0.235	74.07
HSI 22000MBeCW230928	0.041	70.83

## Top % Losers

(over 5 Trading days as at yesterday)

Name	Last Done	5 Days % Chg
AAC 5xLongSG240201	0.001	-92.86
Sunny 5xLongUB250930	0.015	-75.81
Sunny 5xLongSG241126	0.185	-72.39
Sunny 5xLongUB250127	0.017	-71.19
Sunny 5xLongSG240327	0.060	-70.73
Sunny 5xLongUB250321	0.063	-70.00
Sunny 5xLongSG231024	0.026	-68.29
NASDAQ 11000MBePW231215	0.034	-67.31
Kuaisho 5xLongUB250228	0.001	-66.67
NKY 24000MBePW231208	0.017	-65.31

**Disclaimer:** The information on this page is provided as a service to readers. It does not constitute financial advice and/or any investment recommendations. Past performance is not indicative of future results. We assume no liability for damages resulting from or arising out of the use of such information. It would be best if you did your own research to make your personal investment decisions wisely or consult a licenced investment advisor.

MARKET AT A GLANCE



INVEST **FAT**®



# GROWING WEALTH

## WITH CONFIDENCE

 12 & 13 Aug

 10am - 5pm

 Suntec Exhibition Hall 403, Level 4

**REGISTER NOW**

Brought to you by:



# Regional Markets

Over 5 trading days



ShareInvestor WebPro ([www.shareinvestor.com](http://www.shareinvestor.com))

1. Price > Stock prices
2. select Market: Bursa / HKEX / NYSE / NASDAQ (one bourse at a time)
3. select Stocks Tab
4. select Ranking Top Gainers or Top Losers (Over 5 Trading Days)
5. Mouse over Column Layout > select Edit Customs > select Name > select Last Done Price > select 5 Days Change > select 52 Weeks High > select 52 Weeks Low > Mouse Over Column Layout > select Custom

## BURSA (RM)

### Top Gainers

Name	Last Done	5 Days Change	52 Weeks High	52 Weeks Low
AJI	16.520	0.820	17.100	10.920
HEXTECH	27.480	0.800	30.600	3.500
KLK	23.500	0.700	23.760	19.420
HLBANK	19.600	0.680	21.600	18.460
AAX	2.330	0.650	2.150	0.355

### Top Losers

Name	Last Done	5 Days Change	52 Weeks High	52 Weeks Low
MPI	29.440	-1.540	34.980	23.600
IMASPRO	4.850	-0.350	6.800	4.010
DLADY	21.400	-0.300	33.080	20.220
UNISEM	3.220	-0.300	3.670	2.290
HEIM	26.400	-0.260	30.000	22.440

## HONG KONG (HKD)

### Top Gainers

Name	Last Done	5 Days Change	52 Weeks High	52 Weeks Low
XPENG INC	81.000	23.800	99.500	24.750
NIO INC	104.800	22.650	175.000	57.600
XTRACKERS NIFTY 50 SWAP UCITS ETF 1C	1,825.500	22.500	1,825.500	1,543.000
TRIP COM GROUP LTD	301.200	15.200	321.800	159.800
YUM CHINA HOLDINGS INC	472.800	14.000	514.500	300.000

### Top Losers

Name	Last Done	5 Days Change	52 Weeks High	52 Weeks Low
3D MEDICINES INC	49.100	-48.500	131.500	27.700
CONFIDENCE INTELLIGENCE HOLDINGS LT	2.250	-15.910	48.500	1.800
SUNNY OPTICAL TECHNOLOGY GROUP	69.150	-8.850	125.500	65.000
ASMPT LTD	74.200	-6.950	85.000	41.600
CSOP ASSET MANAGEMENT LTD HKD MONEY MARKET ETF CNY	983.300	-6.450	992.550	889.150

## NYSE (USD)

### Top Gainers

Name	Last Done	5 Days Change	52 Weeks High	52 Weeks Low
BERKSHIRE HATHAWAY INC	531,900.000	5,659.990	535,433.000	393,012.250
NVR INC	6,382.980	156.900	6,474.530	3,816.555
TEXAS PACIFIC LAND CORPORATION	1,508.240	62.910	2,739.000	1,266.210
MSCI INC	557.250	47.590	572.500	385.000
WHITE MOUNTAINS INSURANCE GROUP	1,607.110	38.450	1,609.000	1,172.000

### Top Losers

Name	Last Done	5 Days Change	52 Weeks High	52 Weeks Low
INSPIRE MEDICAL SYSTEMS INC	286.860	-31.270	330.000	159.615
HUBBELL INC	310.000	-27.810	340.060	203.930
SPOTIFY TECHNOLOGY S.A.	149.130	-23.350	182.000	69.285
ASBURY AUTOMOTIVE GROUP INC	221.910	-21.170	256.390	138.880
AUTONATION INC	156.010	-20.910	182.085	94.920

## NASDAQ (USD)

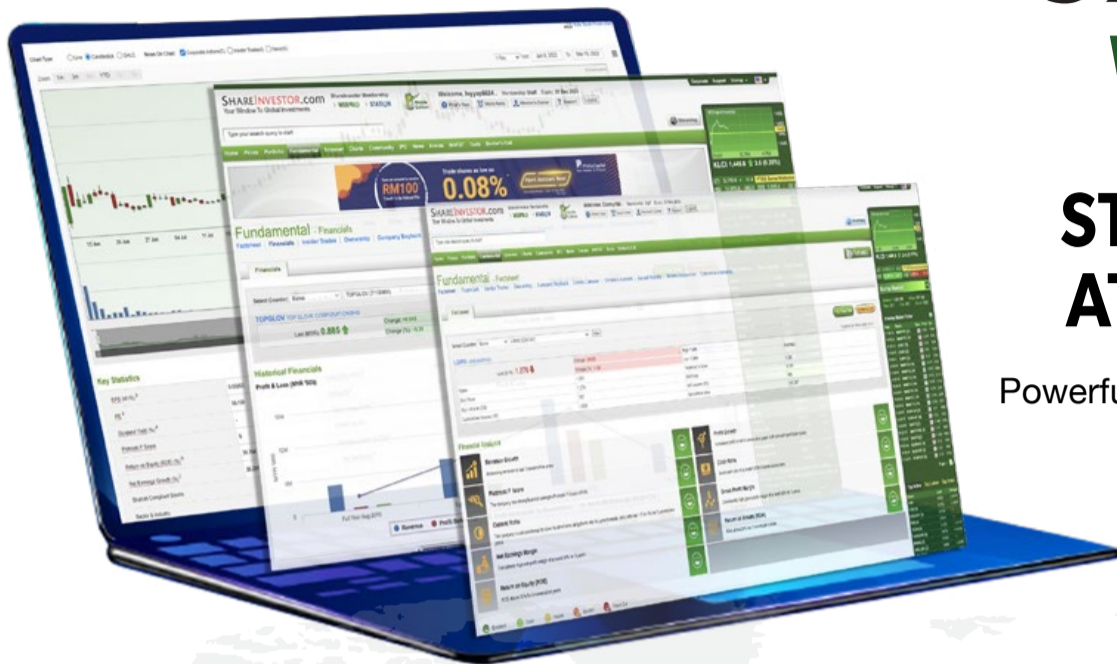
### Top Gainers

Name	Last Done	5 Days Change	52 Weeks High	52 Weeks Low
FIRST CITIZENS BANCSHARES INC NRTH	1,414.460	42.070	1,405.765	505.840
BOOKING HOLDINGS INC	2,958.160	40.660	2,998.000	1,616.850
VICOR CORP	93.700	34.620	82.395	38.710
LAM RESEARCH CORP	642.370	26.850	663.832	299.592
POOL CORPORATION	387.780	26.530	423.970	278.100

### Top Losers

Name	Last Done	5 Days Change	52 Weeks High	52 Weeks Low
EURONET WORLDWIDE INC	93.530	-23.570	121.550	71.600
MERCADOLIBRE INC	1,176.230	-22.110	1,365.640	720.841
NATIONAL WESTN LIFE GROUP INC	405.600	-19.400	431.020	166.939
SOLAREGE TECHNOLOGIES INC	244.260	-18.840	375.900	190.150
INTUITIVE SURGICAL INC	329.370	-18.290	358.070	180.070





# SHAREINVESTOR WEBPRO

## STOCK MARKET DATA AT YOUR FINGERTIPS

Powerful browser-based market analytics platform.  
Access from anywhere

### 8 Markets Data

- ▶ Get access to data from Bursa, NYSE, Nasdaq, HKEX, SGX, IDX, SET & ASX

### Portfolio Management

- ▶ Profit & Loss Summary
- ▶ Stock Alert
- ▶ News & Events filtering
- ▶ Customizable column layout

## Fundamental Analysis

### Financial Analysis Statement

- ▶ Profit & Loss
- ▶ Balance Sheet
- ▶ Cash Flow Statement
- ▶ More than 20 Financial Ratios
- ▶ Dividend Analysis

### Technical Charting

- ▶ C<sup>2</sup> chart (Customisable & Comprehensive)

### Brokers' Call

### Intrinsic Value Calculator

### FactSheet

- ▶ Key Stock Information
- ▶ Ownership
- ▶ Consensus Estimates
- ▶ Annual Report
- ▶ Historical Price
- ▶ Insider Trades

## What's new on WebPro (Stable Release 12.1.0)

In our effort to keep our platform at the forefront of trading technology, we have added on some new features onto our C2 Chart in WebPro

### ADDITIONAL NEW FEATURES:

- ▶ Anchor selector for AVWAP, PVAT, and PAV indicators
- ▶ Volume profile indicator by date range
- ▶ Moving Average Cross indicator
- ▶ Guppy Multiple Moving Average (GMMA) indicator
- ▶ GoNoGo Trend Signal indicators
- ▶ SignalIQ

So what are you waiting for? Head to our platform today and check out our new trading chart features and indicators. We're confident that you'll love the improvements we've made and that they'll help you become a more successful trader.

Click here to start your 9 days FREE trial



# Dividend Stocks

Price & Total Shareholder Return (as at yesterday)



**DEFINITION** Company is paying out dividend with low or moderate leverage.

**CHART GUIDE** Total Shareholder Return (TSR) combines share price appreciation and distributions paid to show the total return to the shareholder expressed as a percentage.



ShareInvestor WebPro > Screener > Market Screener (FA & TA) > select SGX > add criteria

**A. Criteria**

- > click Add Criteria
- Fundamental Analysis Conditions tab >select (i) Dividend Yield
- Fundamental Analysis Conditions tab >select (ii) Dividend Payout (Historical)
- Fundamental Analysis Conditions tab >select (iii) Total Debt To Equity
- Fundamental Analysis Conditions tab >select (iv) Total Shareholder Returns

- Fundamental Analysis Conditions tab >select (v) Total Shareholder Returns
- Fundamental Analysis Conditions tab / >select (vi) CAGR of Dividend Per Share
- Fundamental Analysis Conditions tab >select (vii) CAGR of Dividend Per Share

**B. Conditions (Criteria Filters)**

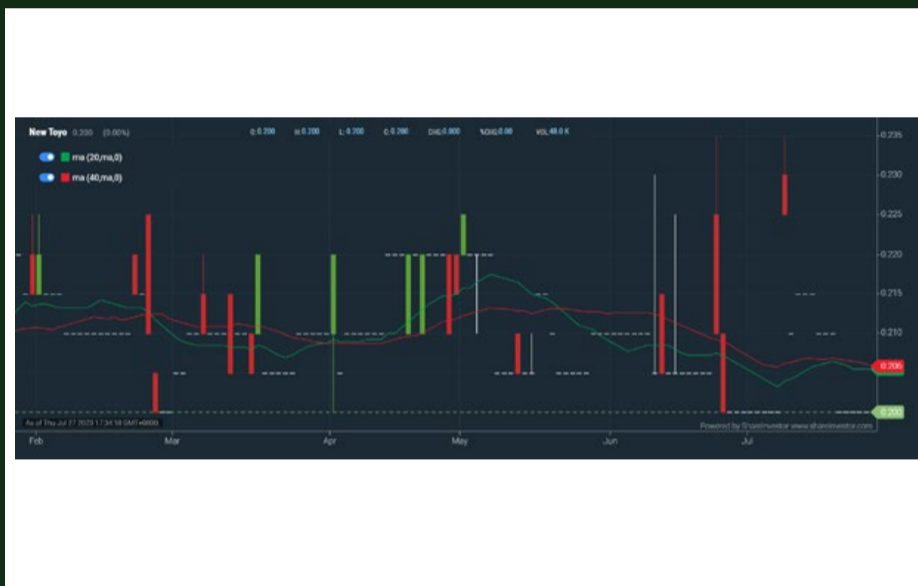
1. Dividend Yield - select (more than) type (1) % for the past select (1) financial year(s)
2. Dividend Payout (Historical) - select (between) type (0.5) to type (1) times for the past select (1) financial year(s)
3. Total Debt to Equity – select (less than) type (1) for the past select (1) financial year(s)
4. Total Shareholder Return – select (more than) type (5) % for the past select (3) financial year(s)
5. Total Shareholder Return – select (more than) type (5) % for the past select (5) financial year(s)

6. CAGR of Dividend Per Share – select (less than) type (30) % for the past select (5) financial year(s)
  7. CAGR of Dividend Per Share – select (more than) type (1) % for the past select (5) financial year(s)
- > click Save Template > Create New Template type (Dividend Companies) > click Create
  - > click Save Template as > select Dividend Companies > click Save
  - > click Screen Now (may take a few minutes)
  - > Sort By: Select (Dividend Yield) Select (Desc)
  - > Mouse over stock name > Factsheet > looking for Total Shareholder Return



**New Toyo (SGX:N08)**

ANALYSIS

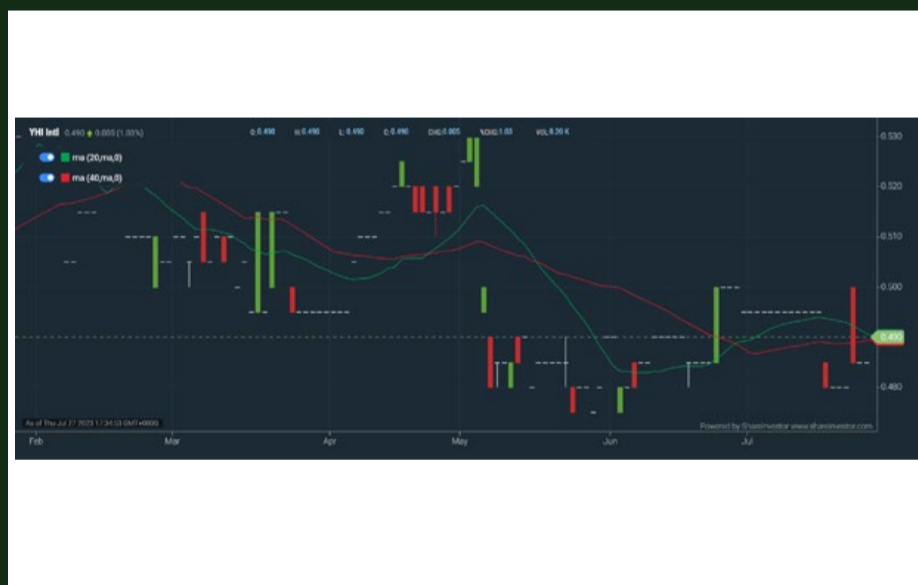


Period	Dividend Received	Capital Appreciation	Total Shareholder Return	
Short Term Return	5 Days	-	-0.010	-4.76%
	10 Days	-	-0.015	-5.98%
	20 Days	-	-	-
Medium Term Return	3 Months	0.009	-0.020	-5.00%
	6 Months	0.009	-0.015	-2.79%
	1 Year	0.018	+0.006	+14.14%
Long Term Return	2 Years	0.033	-0.005	+13.66%
	3 Years	0.048	+0.072	+53.75%
	5 Years	0.072	-0.030	+18.26%
Annualised Return	Annualised	-	-	+3.41%



**YHI Intl (SGX: BPF)**

ANALYSIS

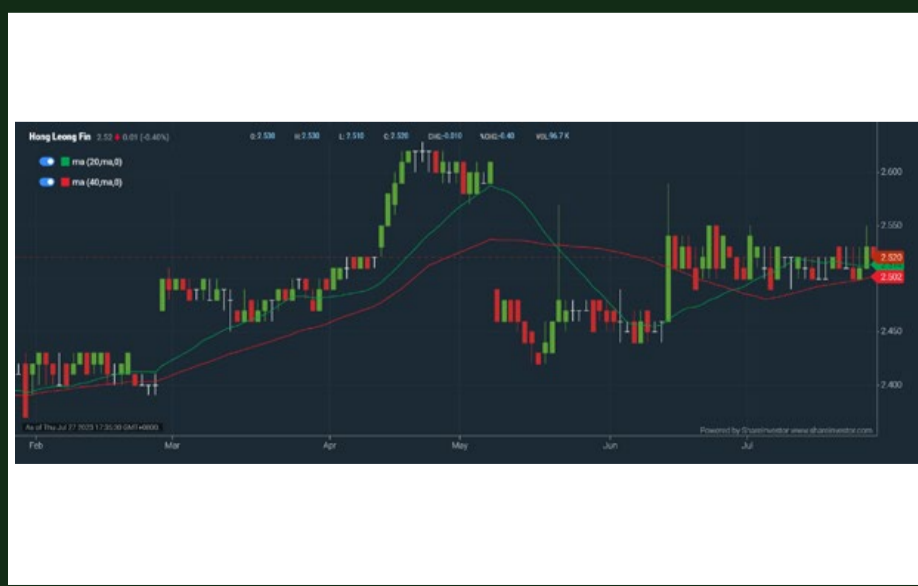


Period	Dividend Received	Capital Appreciation	Total Shareholder Return	
Short Term Return	5 Days	-	+0.010	+2.08%
	10 Days	-	-0.005	-1.01%
	20 Days	-	-0.010	-2.00%
Medium Term Return	3 Months	0.036	-0.025	+2.14%
	6 Months	0.036	-0.020	+3.14%
	1 Year	0.036	-0.020	+3.14%
Long Term Return	2 Years	0.072	+0.015	+10.32%
	3 Years	0.105	+0.190	+58.33%
	5 Years	0.151	+0.090	+56.34%
Annualised Return	Annualised	-	-	+9.35%



**Hong Leong Fin (SGX: S41)**

ANALYSIS



Period	Dividend Received	Capital Appreciation	Total Shareholder Return	
Short Term Return	5 Days	-	-	-
	10 Days	-	-	-
	20 Days	-	+0.020	+0.80%
Medium Term Return	3 Months	0.133	-0.000	+1.66%
	6 Months	0.133	+0.120	+10.54%
	1 Year	0.170	+0.070	+9.80%
Long Term Return	2 Years	0.290	+0.090	+16.64%
	3 Years	0.330	+0.210	+26.54%
	5 Years	0.680	-0.180	+19.40%
Annualised Return	Annualised	-	-	+3.61%



# MAKE BETTER TRADING STRATEGIES with SHARE INVESTOR STATION



## 8 Markets Data

- ▶ Get access to data from Bursa, NYSE, Nasdaq, HKEX, SGX, IDX, SET & ASX

## Dynamic Chart

- ▶ Candlestick Pattern Recognition
- ▶ 111 Indicators
- ▶ 39 Drawing Tools
- ▶ Performance Comparison Chart

## Intraday Data

- ▶ Market Depth
- ▶ Trade Summary Matrix & Chart
- ▶ Times & Sales
- ▶ Intraday Market Ticker

## Market Screener

- ▶ 96 criteria ranging from FA, TA, Consensus Estimate
- ▶ Real-time Data

## Power Frame

- ▶ Combining few Dynamic Charts together with intraday information in one frame

## Technical Analysis

## Fundamental Analysis

### Financial Analysis Statement

- ▶ Profit & Loss
- ▶ Balance Sheet
- ▶ Cash Flow Statement
- ▶ More than 20 Financial Ratios
- ▶ Dividend Analysis

### FactSheet

- ▶ Key Stock Information
- ▶ Ownership
- ▶ Consensus Estimates
- ▶ Annual Report
- ▶ Historical Price
- ▶ Insider Trades

Start your 18 days  
FREE trial now  
(Valued at SGD\$52.40)





# Growth Stocks

## Price & Total Shareholder Return (as at yesterday)



**DEFINITION** Company revenue is growing and making good quality of earnings with positive Free Cash Flow.

**CHART GUIDE** Total Shareholder Return (TSR) combines share price appreciation and distributions paid to show the total return to the shareholder expressed as a percentage.



ShareInvestor WebPro > Screener > Market Screener (FA & TA) > select SGX > add criteria

**A. Criteria**

1. Fundamental Analysis Conditions tab >select (i) Free Cash Flow, (ii) Revenue Growth, (iii) Gross Profit (Earnings) Margin, (iv) Quality of Earnings, (v) Total Shareholder Returns, > click Add Criteria
2. Fundamental Analysis Conditions tab >select (vi) Total Shareholder Returns > click Add Criteria

**B. Conditions (Criteria Filters)**

1. Free Cash Flow - select (more than) type (1) for the past select (1) financial year(s)
  2. Revenue Growth - select (more than) type (1) for the past select (1) financial year(s)
  3. Gross Profit (Earnings) Margin - select (more than) type (30) % for the past select (1) financial year(s)
  4. Quality of Earnings - select (more than) type (1) for the past select (1) financial year(s)
  5. Total Shareholder Return - select (more than) type (5) % for the past select (3) financial year(s)
  6. Total Shareholder Return - select (more than) type (5) % for the past select (5) financial year(s)
- > click Save Template > Create New Template type (Growth Companies) > click Create

- > click Save Template as > select Growth Companies > click Save
- > click Screen Now (may take a few minutes)
- > Sort By: Select (Revenue Growth) Select (Desc)
- > Mouse over stock name > Factsheet > looking for Total Shareholder Return

### Golden Energy (SGX: AUE)



Period	Dividend Received	Capital Appreciation	Total Shareholder Return
Short Term Return	5 Days	-	-
	10 Days	-	-
	20 Days	-	-19.64%
Medium Term Return	3 Months	-0.044	-20.70%
	6 Months	-0.004	-2.17%
	1 Year	+0.061	+51.26%
Long Term Return	2 Years	+0.085	+86.47%
	3 Years	+0.144	+480.00%
	5 Years	0.017	+123.85%
Annualised Return	Annualised	-	+17.49%

### Acesian Partners (SGX: 5FW)



Period	Dividend Received	Capital Appreciation	Total Shareholder Return
Short Term Return	5 Days	+0.001	+1.85%
	10 Days	+0.001	+1.85%
	20 Days	+0.005	+10.00%
Medium Term Return	3 Months	-0.003	-5.17%
	6 Months	+0.004	+7.84%
	1 Year	+0.002	+3.77%
Long Term Return	2 Years	+0.039	+243.75%
	3 Years	+0.041	+292.85%
	5 Years	+0.037	+205.56%
Annualised Return	Annualised	-	+25.03%

### SamuderaShipping (SGX: S56)



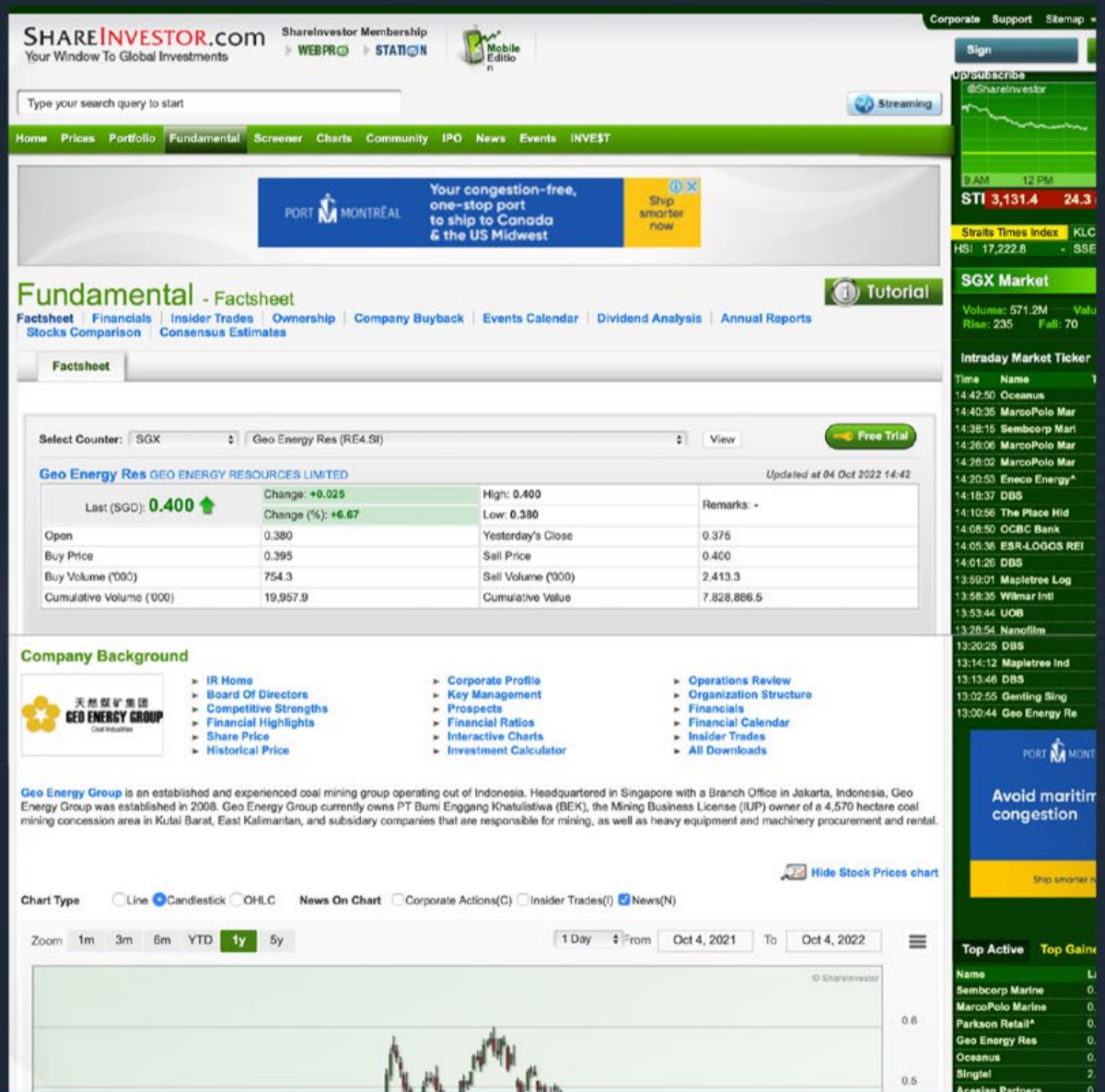
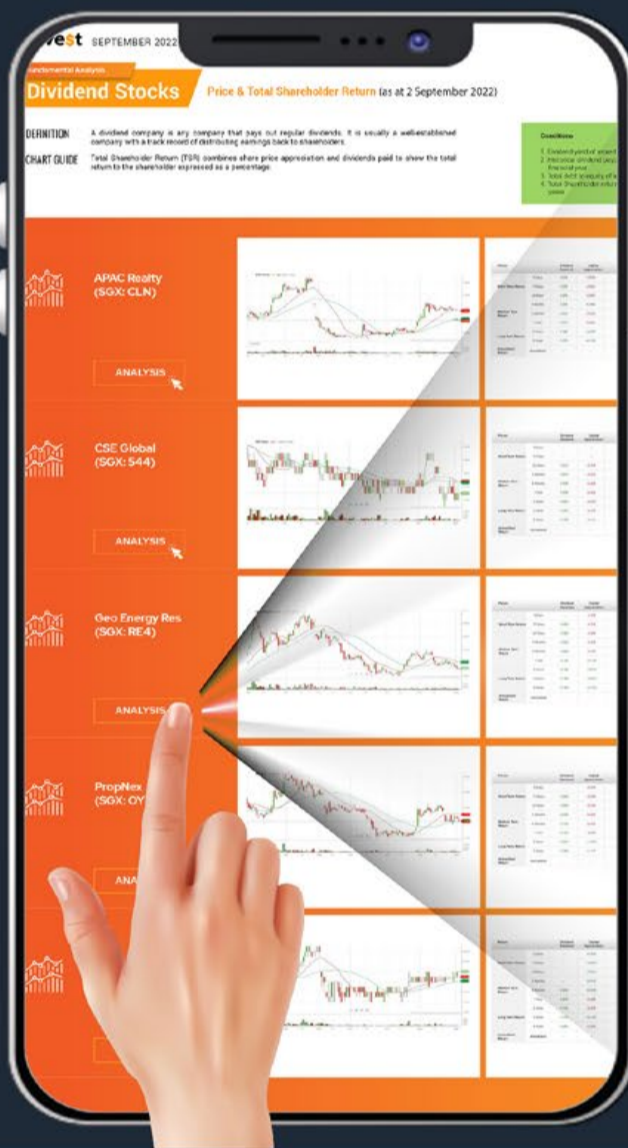
Period	Dividend Received	Capital Appreciation	Total Shareholder Return
Short Term Return	5 Days	+0.020	+2.29%
	10 Days	+0.025	+2.87%
	20 Days	+0.020	+2.29%
Medium Term Return	3 Months	0.250	+5.88%
	6 Months	0.250	+32.83%
	1 Year	0.320	+52.07%
Long Term Return	2 Years	0.480	+367.24%
	3 Years	0.471	+1239.22%
	5 Years	0.406	+946.21%
Annualised Return	Annualised	-	+89.93%



# COMPANY ANALYSIS AT YOUR FINGERTIPS

Click the Analysis buttons to access the Factsheets of any company featured on the Hot Stocks (TA), Momentum-Up (TA), Up-Trending (TA), Dividend (FA), Growth (FA) & Value (FA) Stocks pages.

Invest with knowledge



- Company Background
- Candlestick Chart
- Current Price
- Key Statistics
- Peer Comparison
- Total Shareholder Returns
- Price Movements
- IPO performance
- Financial Reports
- Historical Price Data
- Latest News
- More



# Value Stocks

Price & Total Shareholder Return (as at yesterday)



**DEFINITION** Share price of a company trading at a lower price as compared to its fundamentals (FA) such as financial performance and dividend, allowing it to be attractive to value investors.  
**CHART GUIDE** Total Shareholder Return (TSR) combines share price appreciation and dividend distributions paid to show the total return to the shareholder expressed as a percentage.



**ShareInvestor WebPro > Screener > Market Screener (FA & TA) > select SGX > add criteria**

**A. Criteria**  
 > click Add Criteria  
 • Fundamental Analysis Conditions tab (i) Price Earnings Ratio  
 • Fundamental Analysis Conditions tab >select (ii) CAGR of Net Earnings  
 • Fundamental Analysis Conditions tab >select (iii) Net Debt To Equity  
 • Fundamental Analysis Conditions tab >select (iv) Return On Equity (ROE)

**B. Conditions**

1. Price Earnings Ratio - select (less than) type (15) times now
2. CAGR of Net Earnings - select (more than) type (10) % for the past type (3) financial year(s)
3. Net Debt To Equity – select (less than) type (1) for the past select (1) financial year(s)
4. Return On Equity (ROE) – select (more than) type (10) % for the past select (1) financial year(s)

- > click Save Template > Create New Template type (Value Stock) > click Create
- > click Save Template as > select Value Companies > click Save
- > click Screen Now (may take a few minutes)
- > Mouse over stock name > Factsheet > looking for Total Shareholder Return
- > Mouse over stock name > Charts > click C2 Charts tab



**China Intl (SGX: BEH)**

**ANALYSIS**

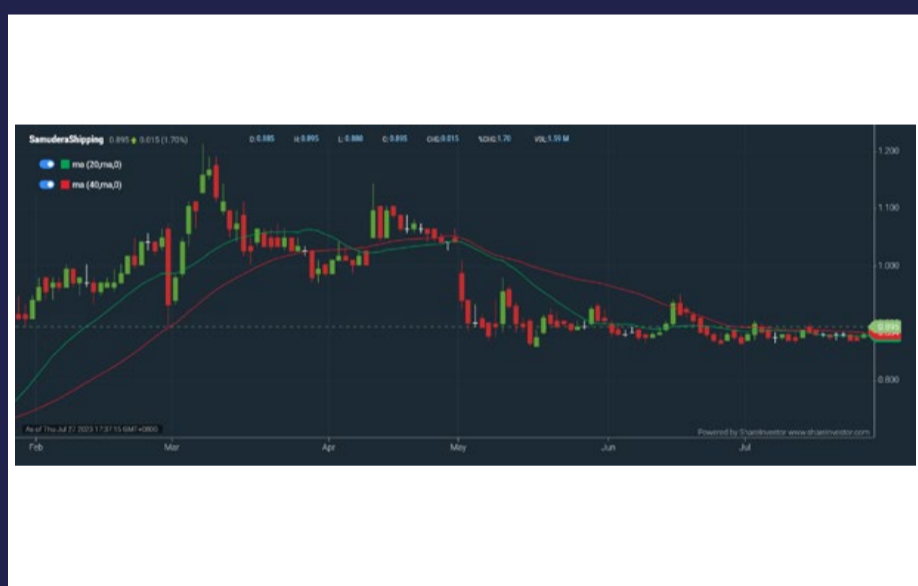


Period	Dividend Received	Capital Appreciation	Total Shareholder Return
Short Term Return	5 Days	-	-
	10 Days	-	-1.08 %
	20 Days	-	-1.08 %
Medium Term Return	3 Months	0.010	+14.61 %
	6 Months	0.010	+5.15 %
	1 Year	0.010	-12.07 %
Long Term Return	2 Years	0.010	-44.00 %
	3 Years	0.040	-45.98 %
	5 Years	0.040	-50.38 %
Annualised Return	Annualised	-	-13.00 %



**SamuderaShipping (SGX:S56)**

**ANALYSIS**



Period	Dividend Received	Capital Appreciation	Total Shareholder Return
Short Term Return	5 Days	-	+2.29 %
	10 Days	-	+2.87 %
	20 Days	-	+2.29 %
Medium Term Return	3 Months	0.250	+9.88 %
	6 Months	0.250	+32.93 %
	1 Year	0.320	+52.07 %
Long Term Return	2 Years	0.480	+367.24 %
	3 Years	0.471	+1239.22 %
	5 Years	0.480	+946.21 %
Annualised Return	Annualised	-	+59.93 %



**Golden Energy (SGX: AUE)**

**ANALYSIS**



Period	Dividend Received	Capital Appreciation	Total Shareholder Return
Short Term Return	5 Days	-	-
	10 Days	-	-
	20 Days	-	-16.64 %
Medium Term Return	3 Months	-	-20.70 %
	6 Months	-	-2.17 %
	1 Year	-	+51.26 %
Long Term Return	2 Years	-	+89.47 %
	3 Years	-	+400.00 %
	5 Years	0.017	+123.86 %
Annualised Return	Annualised	-	+17.49 %

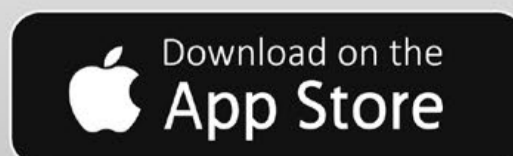
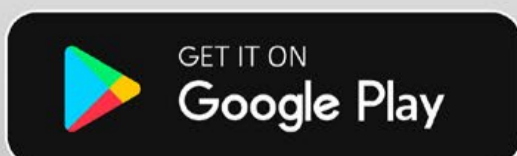


# *All New* ShareInvestor Mobile App



Charting | Market | Watchlist | News | Prices | Alerts  
Time & Sales | Key Statistics | More

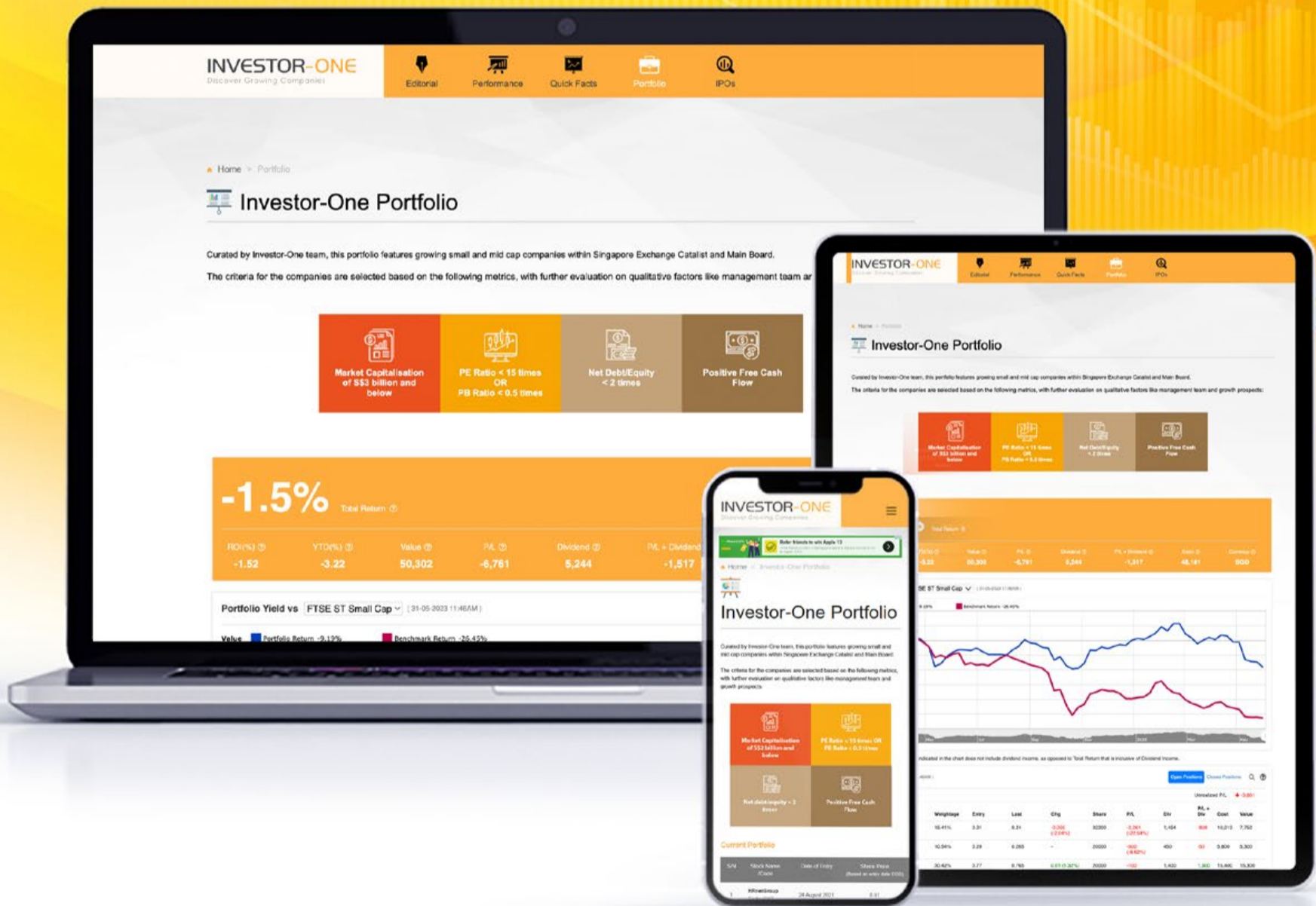
Now available on



# INVESTOR-ONE PORTFOLIO

Curated and managed by the Investor-One team under ShareInvestor, this **free-to-access** portfolio will feature local small and mid-cap companies within Singapore Exchange's Mainboard and Catalyst.

Join us on the journey and watch as we manage a locally vested portfolio with a **fund of \$100,000**.



 **ENTER PORTFOLIO** >



# INVESTOR-ONE

Discover Growing Companies

## Investor-One Portfolio

Curated by Investor-One team, this portfolio features growing small and mid cap companies within Singapore Exchange Catalist and Main Board.

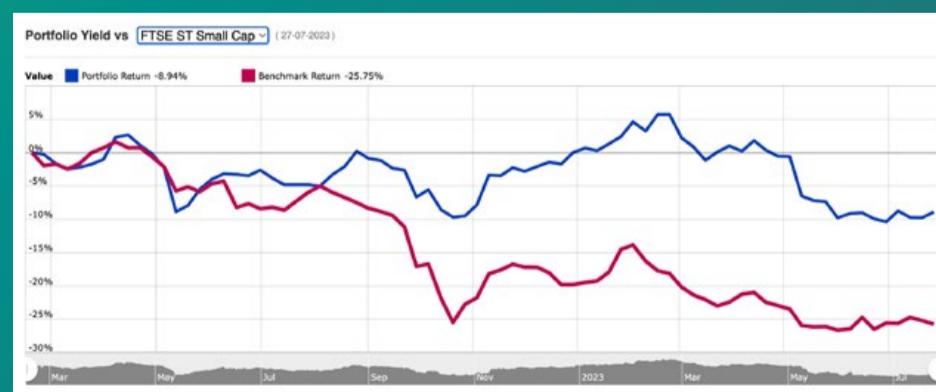
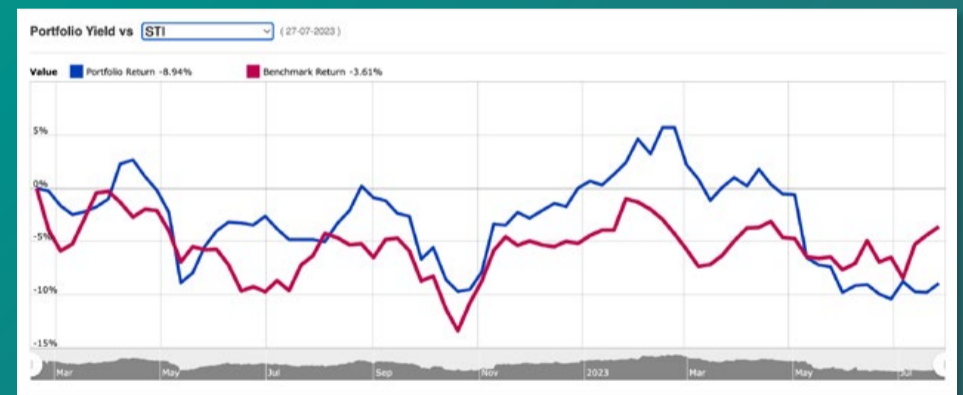
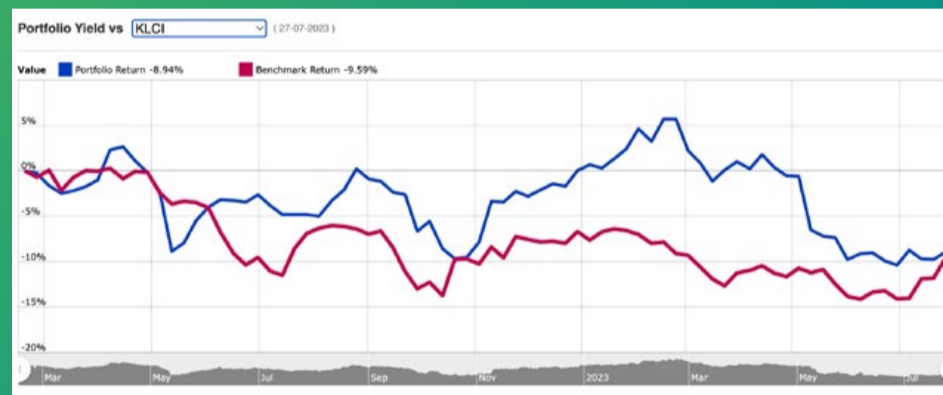
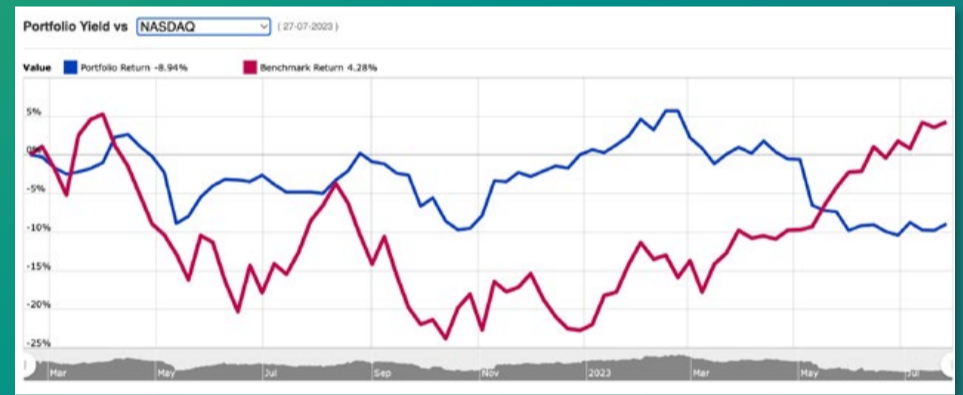
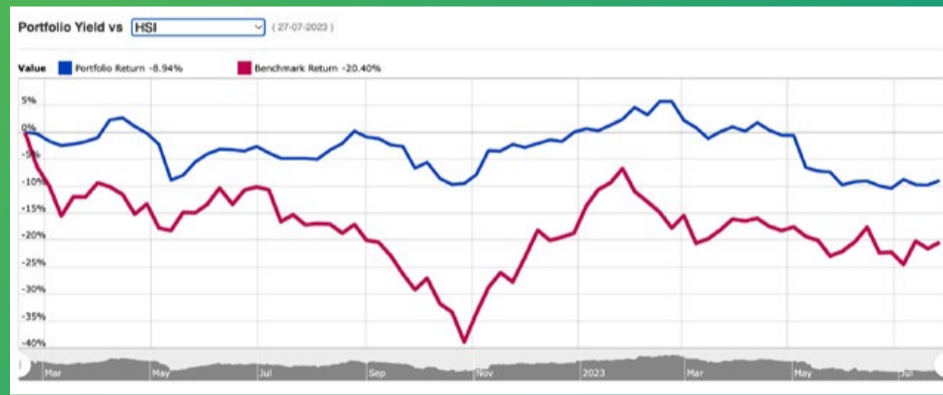
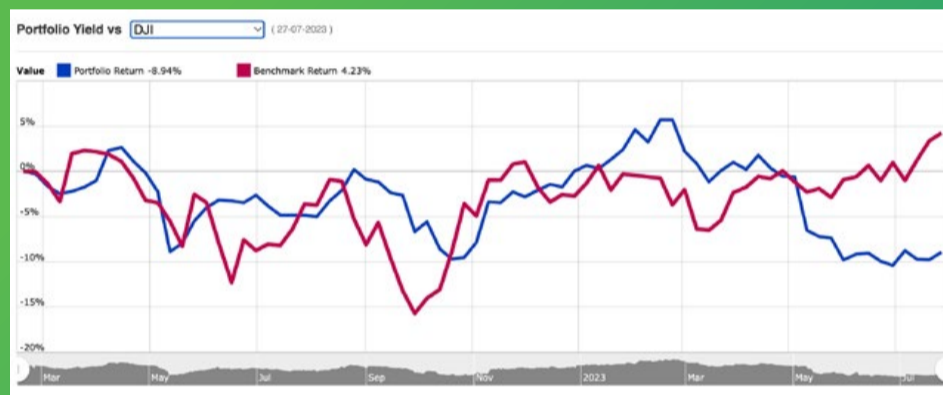
The criteria for the companies are selected based on the following metrics, with further evaluation on qualitative factors like management team and growth prospects:

 <p>Market Capitalisation of S\$3 billion and below</p>	 <p>PE Ratio &lt; 15 times OR PB Ratio &lt; 0.5 times</p>
 <p>Net Debt/Equity &lt; 2 times</p>	 <p>Positive Free Cash Flow</p>

INVESTOR-ONE PORTFOLIO

**-2.3%** Total Return

ROI(%)	YTD(%)	Value	P/L	Dividend	P/L + Dividend	Cash	Currency
-2.31	-4	59,469	-7,607	5,300	-2,307	38,224	SGD



**Note:** The Portfolio Return indicated in the chart does not include dividend income, as opposed to Total Return that is inclusive of Dividend Income.

continued on next page...

## INVESTOR-ONE

Discover Growing Companies

## Summary ( 27-07-2023 )

Open Positions

Unrealized P/L ↓ -4,707

Name↑	Weightage	Entry	Last	Chg	Share	P/L	Div	P/L + Div	Cost	Value
Geo Energy Res	11.95%	0.31	0.22	-	32300	-2,907 (-29.03%)	1,454	-1,454	10,013	7,106
Hock Lian Seng	8.74%	0.29	0.26	-	20000	-600 (-10.34%)	450	-150	5,800	5,200
HRnetGroup	24.55%	0.77	0.73	-	20000	-800 (-5.19%)	1,400	600	15,400	14,600
Hyphens Pharma	24.80%	0.3	0.295	-	50000	-250 (-1.67%)	890	640	15,000	14,750
JEP Hldgs	16.84%	0.31	0.31	-	32300	-	-	-	10,013	10,013
Kimly	5.55%	0.4	0.33	-	10000	-700 (-17.50%)	224	-476	4,000	3,300
Nordic	7.57%	0.395	0.45	-	10000	550 (13.92%)	283	833	3,950	4,500

## Summary ( 27-07-2023 )

Closed Positions

Realized Profit ↓ -2,900

Name↑	Avg Buy	Avg Sell	Shares	Comm	P/L	P/L + Div	Proceeds
HG Metal	0.375	0.34	10000	-	-350	50	3,400
InnoTek	0.735	0.48	10000	-	-2,550	-2,350	4,800

## Transaction ( 27-07-2023 )

Action	Stock	Price	Shares	Exchange Rate	Comm	Amount	Date↓	Notes
Buy	JEP Hldgs	0.310	32300	N/A	0.00	10,013	4 Jul 2023	-
Sell	HG Metal	0.340	10000	N/A	0.00	3,400	13 Mar 2023	-
Sell	InnoTek	0.480	10000	N/A	0.00	4,800	13 Mar 2023	-
Buy	Geo Energy Res	0.310	32300	N/A	0.00	10,013	13 Mar 2023	-
Buy	HRnetGroup	0.770	20000	N/A	0.00	15,400	16 Feb 2022	-
Buy	Kimly	0.400	10000	N/A	0.00	4,000	16 Feb 2022	-
Buy	HG Metal	0.375	10000	N/A	0.00	3,750	16 Feb 2022	-
Buy	InnoTek	0.735	10000	N/A	0.00	7,350	16 Feb 2022	-
Buy	Nordic	0.395	10000	N/A	0.00	3,950	16 Feb 2022	-
Buy	Hyphens Pharma	0.300	50000	N/A	0.00	15,000	16 Feb 2022	-
Buy	Hock Lian Seng	0.290	20000	N/A	0.00	5,800	16 Feb 2022	-
Cash	Deposit	-	-	N/A	-	100,000	15 Feb 2022	-

continued on next page...



## INVESTOR-ONE

Discover Growing Companies

## Dividend ( 27-07-2023 )

YTD

SGD 2841.10

TRAILING 12 MONTHS

SGD 3383.30

2022

SGD 2459.20

Stock	Ex-Date	Payable Date	Amt	Amt(SGD)	Total
Kimly	27 Jun 2023	14 Jul 2023	SGD 0.0056	0.0056	56
Geo Energy Res	29 May 2023	08 Jun 2023	SGD 0.0050	0.0050	161.50
Hyphens Pharma	09 May 2023	24 May 2023	SGD 0.0111	0.0111	555
Geo Energy Res	08 May 2023	17 May 2023	SGD 0.0400	0.0400	1292
Hock Lian Seng	07 May 2023	19 May 2023	SGD 0.0100	0.0100	200
Nordic	07 May 2023	17 May 2023	SGD 0.0091	0.0091	90.60
HRnetGroup	03 May 2023	12 May 2023	SGD 0.0187	0.0187	374
Kimly	26 Jan 2023	08 Feb 2023	SGD 0.0112	0.0112	112
HRnetGroup	28 Aug 2022	06 Sep 2022	SGD 0.0213	0.0213	426
Nordic	16 Aug 2022	02 Sep 2022	SGD 0.0116	0.0116	116.20
Kimly	29 Jun 2022	15 Jul 2022	SGD 0.0056	0.0056	56
Hyphens Pharma	11 May 2022	25 May 2022	SGD 0.0067	0.0067	335
InnoTek	10 May 2022	25 May 2022	SGD 0.0200	0.0200	200
Hock Lian Seng	08 May 2022	20 May 2022	SGD 0.0125	0.0125	250
HRnetGroup	08 May 2022	18 May 2022	SGD 0.0300	0.0300	600
Nordic	05 May 2022	17 May 2022	SGD 0.0015	0.0015	15.20
Nordic	05 May 2022	17 May 2022	SGD 0.0061	0.0061	60.80
HG Metal	05 May 2022	20 May 2022	SGD 0.0400	0.0400	400

This portfolio is managed by Investor-One research team, under ShareInvestor.

## Disclaimer:

1. The Investor-One portfolio is aggregated for educational and illustration purposes only. It is curated based on fixed financial parameters as indicated above. The investor-one team select their stocks solely base on the these fixed parameters. The featured companies are for information only and does not constitute investment advice.
2. The investor-one team is not licensed by any financial authority in Singapore. You should consult your Trading Representative or Financial Advisors before making any financial decisions.
3. Current Price, current value and gain/loss (%) under current portfolio are based on 10 minutes delayed data.
4. Purchase Price and Exit Price are based on EOD price.
5. The views and opinions expressed does not necessarily reflect those of ShareInvestor Pte Ltd nor any related companies of ShareInvestor Pte Ltd.

## COMPANY SPOTLIGHT

# Powermatic Data System: A Deep Dive into Property Redevelopment and the Growing Business

Vincent Wong, Investor-One / Tue, Jul 25, 8:00 AM



S\$80 million, is the potential proceeds Powermatic Data System may get in the future should they decide to redevelop and sell an investment property they own, according to the data the company provided. With a market capitalization hovering around the S\$103 million mark, it's not particularly complex arithmetic to notice a somewhat underappreciated valuation for the firm. It should be underscored, however, that the realization of this value is contingent on the timely completion of the proposed redevelopment and subsequent sales as well as the distribution of cash to the shareholders.

On the 6th of July, the company announced that it seek to redevelop its investment property into a building for food production and sell it upon completion. The management has stated that the impetus for the project is a strategic move aimed at maximizing shareholder value, potentially through the distribution of proceeds.<sup>1</sup>

*continued on next page...*



continued... [Powermatic Data System: A Deep Dive into Property Redevelopment and the Growing Business]



Freehold investment property owned by the company located at 7 and 9 Harrison Road

The property, which boasts a net usable area of 61,171 sqft, has been valued at S\$757 per square foot, based on an appraisal conducted by Knight Frank. To draw a comparison, buildings approved for food production within the vicinity of the property have recently recorded transaction prices between S\$1,300 and S\$1,700 per square foot. Based on the lowest end of that transaction prices, assuming the net usable area remains the same after redevelopment, the completed food production property would be worth around S\$80 million.

The company is set to self-finance the S\$25 million capex required for redevelopment from its own cash reserves. Moreover, they are anticipating the project to be completed in 2 years.

If the project progresses as envisioned, there is a real chance of a hefty one-time dividend payout in the future. Considering the company's modest market capitalization of just S\$103 million as of July 20th, such a payout could potentially result in a rich yield for the shareholders. But note that it would happen only if they managed to sell and only if they managed to prevent cost overrun. Most importantly, investors may have to wait for three to four years for such a catalyst to happen.

In addition to the potential value of the property on the company's balance sheet, you should also pay attention to the firm's core business as it has shown commendable performance over the past few years.

continued on next page...

continued... [Powermatic Data System: A Deep Dive into Property Redevelopment and the Growing Business]

## Business

The company specializes in original equipment manufacturing (OEM) and original design manufacturing (ODM) of wireless connectivity devices with its radio frequency engineering expertise, offering products such as wireless radio modules, embedded boards, access points, and antennas. In other words, they are designing and manufacturing components that make Wi-Fi possible in many products, from home automation to factory automation, medical equipment, transportation, and more.



Powermatic Data Systems Limited Business Model as Illustrated in its Annual Report

The company owns its manufacturing facilities located in Johor, Malaysia, and Suzhou, China. In FY23, 47% of the sales were generated in Europe, 34% in Asia, and 18% in the USA.

## Profitability

Thanks to the business. For the past few years, the company has been riding the trends for wireless technology in burgeoning market sectors such as the Internet of Things (IoT), and the increasing need for Wi-Fi. As a result, it has seen a healthy growth rate over the past few years.

Trend		Full Year Mar 2023	Full Year Mar 2022	Full Year Mar 2021	Full Year Mar 2020	Full Year Mar 2019
Revenue	■■■■■	30,916	27,922	26,251	21,756	20,954
Period-on-Period % Growth		+10.72%	+6.37%	+20.66%	+3.83%	+29.86%
Cost of Revenue	■■■■■	(15,520)	(14,594)	(13,317)	(10,014)	(11,154)
Period-on-Period % Growth		-6.35%	-9.59%	-32.98%	+10.22%	-39.36%
Gross Profit	■■■■■	15,396	13,328	12,934	11,742	9,800
Period-on-Period % Growth		+15.52%	+3.05%	+10.15%	+19.82%	+20.51%

continued on next page...



continued... [Powermatic Data System: A Deep Dive into Property Redevelopment and the Growing Business]

In just six years, their pre-tax margin has increased to a whole new level, from 15.89% in FY14 to 45.32% in FY20. In FY21, due to pandemic disruption and chip shortages, their pretax margin decreased to 34.57% and subsequently slowly recovered to 37.50% in the latest FY. It is an impressive achievement.



There are a few possible explanations for why they could expand their margin.

- **Efficiency Improvements:** They could have improved their operational efficiencies, and supply chain management, and reduced the cost of goods sold as well as reasonable remunerations. While every other company is complaining about increased labour costs, they have managed to reduce it slightly from S\$3.86 million in FY22 to S\$3.80 million in FY23. It is impressive considering that they had an increase in revenue.
- **Price Increases:** Powermatic Data Systems may have been able to raise its prices due to strong demand for its products, an enhanced reputation, or the development of a technological edge in its products, for which its client base is willing to pay a premium. Their expertise and reputation in radio frequency engineering is not something that easy for other players to develop.
- **Product Mix Shift:** The company is selling a higher proportion of high-margin products or services compared to low-margin ones. They moved away from their low-margin distribution business around FY16. More focused operation along with higher economies of scale on the main operation result in higher margins.

continued on next page...

continued... [Powermatic Data System: A Deep Dive into Property Redevelopment and the Growing Business]

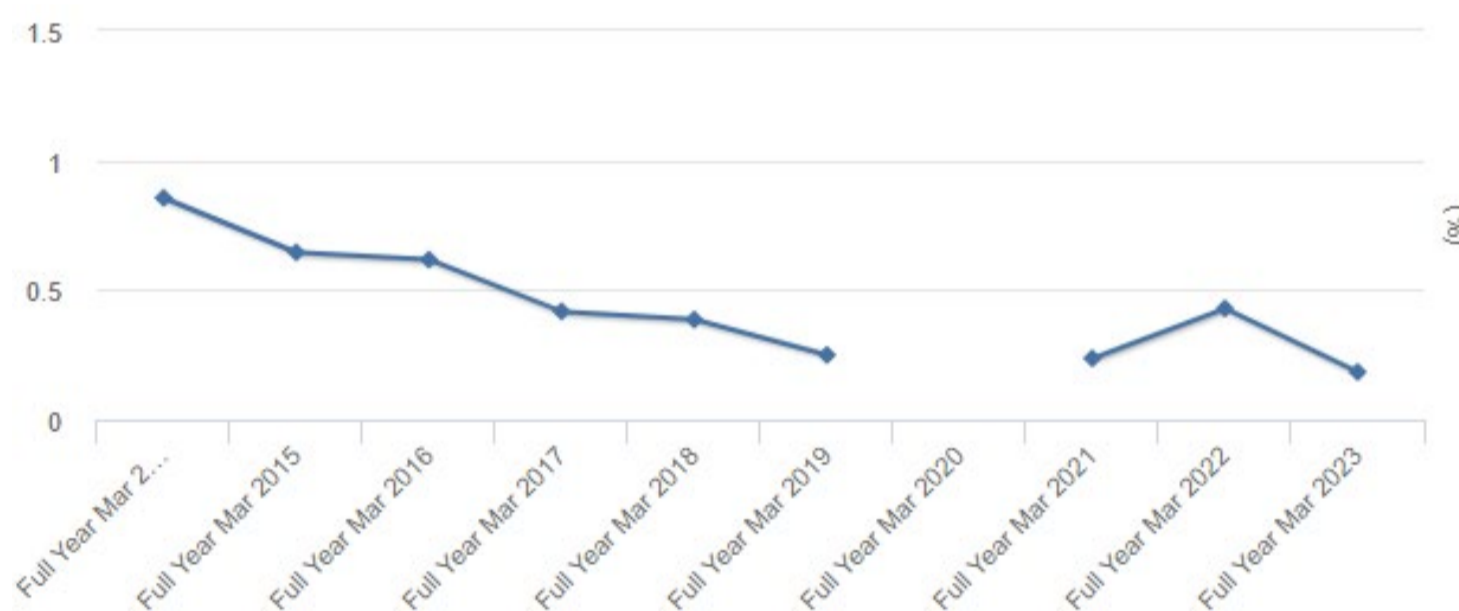
## Balance Sheet

In the balance sheet, the company only had S\$5 million of properties, plants, & equipment while it has S\$12 million of operating cash flow, this indicated that the company's business is not that capital intensive.

The company boasts a robust financial position. In addition to carrying almost no debt, it has a substantial cash reserve amounting to S\$55 million, more than half of its market cap as of the 24th of July.

Notably, Powermatic Data System has utilized the cost approach for property valuation in its financial reporting, a method that does not factor in potential gains from market value appreciation. Therefore, the net book value of the property, the same building that is intended for redevelopment abovementioned, was reported to be only \$16.3 million as of March 31, 2023. It remained listed in the balance sheet at the cost of its acquisition.

But this hefty cash reserve can be attributed to their consistently declining payout ratio over the years, a factor that may raise eyebrows among Singapore's dividend-focused investors.



As of the last reporting period, the company had a net working capital of S\$51 million. In our opinion, the management might be overly conservative with its financial structure. As the investment property and the cash generate little return, it would be better for management to reduce the company's capital reserve and distribute the access cash to shareholders so that they could find a better place to deploy the money themselves. Fortunately, the management is preparing the sale of its investment property. we believe that moving such an asset out of the balance sheet would maximize the ROE and the total return per share.

continued on next page...



continued... [Powermatic Data System: A Deep Dive into Property Redevelopment and the Growing Business]

Their ROE last FY was 12%, a significant improvement compared to 4.6% ten years ago. Yet, it appears this figure is somewhat restrained by the reduced payout ratio and the investment property in its balance sheet. If we were to exclude the investment property, the ROE could surge to as high as 18%, even factoring in the huge cash reserves.

## The Outlook

“Management has been approached, during FY2023, by a number of key customers to defer the shipment of finished products they ordered. Reasons cited centre on slower demand for their products or their customers cancelling or deferring their orders. As an order is confirmed, the Company would commence procurement of key materials, once committed such orders are usually not cancellable. This resulted in the S\$1.0 millions of impairments made to inventories in FY2023 which is an increase of S\$0.7 million over FY2022.”

*Dr Chen Mun, Chairman & CEO*

The steep interest rate hike since last year could lead to a general slowdown in economic activity as it becomes more expensive to access capital and less consumer spending. This apparently also affected their customers according to their CEO in the company's latest annual report. Under such a difficult environment, can they still grow like they did in the past?

Unfortunately, it is probably unlikely. In the latest response to the shareholders' question, the company said that the order book seems sufficient to sustain it through the current FY. But they warned that businesses may face contractions in the future if the global economy does not rebound in a timely manner in the following FY. <sup>2</sup>

Fortunately, our opinion is that the world is just going to be more connected in the future, most probably not through wires but through wireless technologies that rely on radio frequencies. In the long term, we believe that the business sector is sound and can withstand the inherent cyclical nature of the economy.

The key focus area to observe should be the management's ability and

*continued on next page...*

continued... [Powermatic Data System: A Deep Dive into Property Redevelopment and the Growing Business]

willingness to generate per-share returns, either through growth strategies or dividends, to shareholders in order to fulfill their fiduciary duty. Based on the past record, we think that the company demonstrated operational excellence, and we also think that the valuation for the company is undervalued if we factor in the asset that it plans to sell.

Lastly, don't miss out on more analysis like this - click the link to join us on Telegram or subscribe now by entering your email below for the latest insights! If you found this article helpful, please share it with your network to spread the knowledge.

## Comprehensive Per Share Data and Ratio by WebPro

	Trend	Full Year Mar 2023	Full Year Mar 2022	Full Year Mar 2021	Full Year Mar 2020	Full Year Mar 2019
<b>Per Share Data (Adjusted)</b>						
<b>Earnings Per Share (EPS) - Adjusted [S\$]</b> (Earnings/Latest Number Of Shares)		0.27145	0.23377	0.21226	0.24985	0.20012
<b>Net Asset Value (NAV) Per Share - Adjusted [S\$]</b> ((Shareholders' Equity - Other Share Capital)/Latest Number Of Shares)		2.1100	1.9576	1.8099	1.7515	1.6788
<b>Net Tangible Asset (NTA) Per Share - Adjusted [S\$]</b> ((Shareholders' Equity - Other Share Capital - Intangible Assets)/Latest Number Of Shares)		2.1100	1.9576	1.8097	1.7507	1.6772
<b>Operating Cash Flow Per Share - Adjusted [S\$]</b> (Operating Cash Flow/Latest Number Of Shares)		0.3065	0.2065	0.2393	0.2303	0.2433
<b>Free Cash Flow Per Share - Adjusted [S\$]</b> (Free Cash Flow/Latest Number Of Shares)		0.3084	0.2074	0.2241	0.1919	0.2574

	Trend	Full Year Mar 2023	Full Year Mar 2022	Full Year Mar 2021	Full Year Mar 2020	Full Year Mar 2019
<b>Valuation Ratios (Adjusted)</b>						
<b>Price Earnings Ratio (PER) - Adjusted</b> (Price/Adjusted EPS)		10.68	12.41	13.66	11.61	14.49
<b>Price/NAV - Adjusted</b> (Price/Adjusted NAV)		1.3744	1.4814	1.6023	1.6558	1.7274
<b>Price/NTA - Adjusted</b> (Price/Adjusted NTA)		1.3744	1.4814	1.6025	1.6565	1.7291
<b>Price/Revenue - Adjusted</b> (Price x Latest Number Of Shares/Revenue)		3.279	3.630	3.861	4.659	4.837
<b>Price/Operating Cash Flow - Adjusted</b> (Price x Latest Number Of Shares/Operating Cash Flow)		9.461	14.043	12.119	12.592	11.918
<b>Price/Free Cash Flow - Adjusted</b> (Price x Latest Number Of Shares/Free Cash Flow)		9.404	13.985	12.941	15.111	11.266
<b>Price/Cash In Hand - Adjusted</b> (Price x Latest Number Of Shares/Cash In Hand)		1.842	3.415	3.029	2.944	4.148
<b>Dividend Yield - Adjusted [%]</b> (Dividend Per Share/Price)		1.724	3.448	1.724	-	1.724
<b>Dividend Yield incl Special Dividend - Adjusted [%]</b> (Total Dividend Per Share/Price)		3.448	5.172	1.724	-	2.759

**Disclaimer:** The information provided in this stock education article is for educational and informational purposes only. It is not intended to be and should not be construed as investment advice or a recommendation to buy or sell any particular security or investment product. Investing in stocks involves risks, including the possibility of losing money. Before making any investment decisions, you should carefully consider your investment objectives, level of experience, and risk tolerance.

continued on next page...



continued... [Powermatic Data System: A Deep Dive into Property Redevelopment and the Growing Business]

	Trend	Full Year Mar 2023	Full Year Mar 2022	Full Year Mar 2021	Full Year Mar 2020	Full Year Mar 2019
<b>Efficiency Ratios</b>						
+ <b>Inventory Turnover</b> (Cost of Revenue/Average Inventory)	■■■■	2.292	2.332	3.935	4.181	4.840
+ <b>Accounts Receivable Turnover</b> (Revenue/Average Accounts Receivable)	■■■■	43.574	27.281	16.694	18.771	22.244
+ <b>Accounts Payable Turnover</b> (Cost of Revenue/Average Accounts Payable)	■■■■	4.192	3.790	4.039	3.929	4.818
+ <b>Average Days Inventory</b> (365/Inventory Turnover)	■■■■	159.252	156.527	92.751	87.295	75.412
+ <b>Average Days Receivable</b> (365/Accounts Receivable Turnover)	■■■■	8.376	13.379	21.864	19.445	16.409
+ <b>Average Days Payable</b> (365/Accounts Payable Turnover)	■■■■	87.076	96.315	90.380	92.890	75.755
+ <b>Cash Conversion Cycle</b> (Average Days Inventory + Average Days Receivable - Average Days Payable)	■■■■	80.553	73.592	24.235	13.850	16.065
<b>Management Efficiency Ratios</b>						
+ <b>Gross Profitability [%]</b> (Gross Profit / Total Assets)	■■■■	18.049	16.921	17.566	17.301	14.743
+ <b>Return On Assets (ROA) [%]</b> (Net Earnings/Total Assets)	■■■■	11.123	10.374	10.076	12.868	10.523
+ <b>Return On Equity (ROE) [%]</b> (Net Earnings/(Shareholders' Equity - Other Share Capital))	■■■■	12.865	11.941	11.727	14.265	11.921
+ <b>Return On Tangible Equity (ROTE) [%]</b> (Net Earnings/(Shareholders' Equity - Other Share Capital - Intangible Assets))	■■■■	12.865	11.942	11.729	14.271	11.932
+ <b>Cost To Revenue [%]</b> (Cost of Revenue/Revenue)	■■■■	50.201	52.267	50.729	46.029	53.231
+ <b>Cash Earnings Return On Equity [%]</b> (Operating Cash Flow Before Working Capital Changes/(Shareholders' Equity - Other Share Capital))	■■■■	14.816	15.827	15.215	15.928	12.623

	Trend	Full Year Mar 2023	Full Year Mar 2022	Full Year Mar 2021	Full Year Mar 2020	Full Year Mar 2019
<b>Leverage Ratios</b>						
+ <b>Debt To Net Profit</b> ((Long Term Debt + Short Term Debt)/Net Earnings)	■■■	0.044	0.018	0.018	0.035	-
+ <b>Debt To Cash Flow</b> ((Long Term Debt + Short Term Debt)/Operating Cash Flow)	■■■	0.039	0.020	0.016	0.038	-
+ <b>Interest Coverage</b> (Profit Before Interest and Tax/Interest Expense)	■■■	2166.000	n.m.	1474.833	463.150	n.m.
+ <b>Net Debt To Equity</b> ((Long Term Debt + Short Term Debt - Cash and Short Term Investments)/(Shareholders' Equity - Other Share Capital))		Net Cash	Net Cash	Net Cash	Net Cash	Net Cash
+ <b>Total Debt To Equity</b> ((Long Term Debt + Short Term Debt)/(Shareholders' Equity - Other Share Capital))	■■■	0.006	0.002	0.002	0.005	-
+ <b>Debt To Assets</b> ((Short Term Debt + Long Term Debt)/Total Assets)	■■■	0.005	0.002	0.002	0.005	-
+ <b>Financial Leverage</b> (Total Assets / (Shareholders' Equity - Other Share Capital at Carrying Value))	■■■■	1.157	1.151	1.164	1.109	1.133
<b>Cash Flow Ratios</b>						
+ <b>Free Cash Flow to Sales [%]</b> (Free Cash Flow/Revenue)	■■■■	34.865	25.958	29.839	30.833	42.937
+ <b>Operating Cash Flow to Sales [%]</b> (Net Cash from Operations/Revenue)	■■■■	34.655	25.851	31.862	37.001	40.589
<b>Liquidity Ratios</b>						
+ <b>Current Ratio</b> (Current Assets/Current Liabilities)	■■■■	5.555	5.466	4.653	6.560	5.052
+ <b>Cash Ratio</b> (Cash And Cash Equivalents/Current Liabilities)	■■■	4.841	2.872	3.228	5.281	3.135

1 [https://links.sgx.com/FileOpen/PDS-Proposed\\_Redevelopment.ashx?App=Announcement&FileID=764574](https://links.sgx.com/FileOpen/PDS-Proposed_Redevelopment.ashx?App=Announcement&FileID=764574)

2 [https://links.sgx.com/FileOpen/PMD\\_Response\\_to\\_Shareholders\\_Questions.ashx?App=Announcement&FileID=765954](https://links.sgx.com/FileOpen/PMD_Response_to_Shareholders_Questions.ashx?App=Announcement&FileID=765954)

# TOP SIGNIFICANT INSIDER ACTIVITY



Data extracted from WebPro, accurate as at yesterday

Effective Change Date (Notice Date)	Stock Name	Buyer / Seller Name (Classification <sup>a</sup> )	Security Types <sup>b</sup>	Acquired / (Disposed) ['000]			Price	Closing Price <sup>d</sup>	No. of Shares After Trade ['000]			
				Direct	Deemed	Total			Direct	Deemed	Total	% Held <sup>c</sup>
26 Jul 2023 (26 Jul 2023)	Suntec Reit	ARA Trust Management (Suntec) Limited [Tm/Rp]	S/U	3,545		3,545	1.297	1.290	3,545		3,545	0.123
26 Jul 2023 (26 Jul 2023)	Suntec Reit	ARA Trust Management (Suntec) Limited [Tm/Rp]	S/U	-3,545		-3,545	1.297	1.290				
24 Jul 2023 (26 Jul 2023)	ParkwayLife Reit	Cohen & Steers, Inc. [SSH]	S/U		-155	-155		3.820		42,311	42,311	6.990
21 Jul 2023 (26 Jul 2023)	Pegasus SPAC	Mitsubishi UFJ Financial Group, Inc. [SSH]	S/U		-1,000	-1,000		4.650		702	702	2.304
21 Jul 2023 (26 Jul 2023)	Pegasus SPAC	Morgan Stanley [SSH]	S/U		-1,000	-1,000		4.650		702	702	2.304
21 Jul 2023 (26 Jul 2023)	IHH	EMPLOYEES PROVIDENT FUND BOARD [SSH]	S/U	20		20		1.700	903,372		903,372	10.257
20 Jul 2023 (26 Jul 2023)	Pegasus SPAC	Mitsubishi UFJ Financial Group, Inc. [SSH]	S/U		825	825		4.650		1,702	1,702	5.588
21 Jul 2023 (26 Jul 2023)	Vertex SPAC	Mitsubishi UFJ Financial Group, Inc. [SSH]	S/U		-1,200	-1,200		0.063		1,524	1,524	3.662
26 Jul 2023 (26 Jul 2023)	Far East HTrust	FEO Hospitality Asset Management Pte. Ltd. [Tm/Rp]	S/U	2,658		2,658		0.640	133,850		133,850	6.690
25 Jul 2023 (26 Jul 2023)	Abundante	Xun Tingting [SSH]	S/U	5,500		5,500		0.210	5,500	5,000	10,500	10.070
21 Jul 2023 (25 Jul 2023)	Vertex SPAC	Morgan Stanley [SSH]	S/U		-1,200	-1,200		0.063		1,524	1,524	3.662
20 Jul 2023 (25 Jul 2023)	Vertex SPAC	Mitsubishi UFJ Financial Group, Inc. [SSH]	S/U	12	1,030	1,030		0.063		2,724	2,724	6.546
20 Jul 2023 (25 Jul 2023)	Vertex SPAC	Morgan Stanley [SSH]	S/U		1,030	1,030		0.063		2,724	2,724	6.546
20 Jul 2023 (25 Jul 2023)	Pegasus SPAC	Morgan Stanley [SSH]	S/U		825	825		4.650		1,702	1,702	5.588
14 Jul 2023 (25 Jul 2023)	Arion Ent	Chan Shui Sheung Ivy [SSH]	S/U	-59,081		-59,081		0.007				
18 Jul 2023 (24 Jul 2023)	IHH	EMPLOYEES PROVIDENT FUND BOARD [SSH]	S/U	7		7		1.690	903,351		903,351	10.257
21 Jul 2023 (24 Jul 2023)	Biolidics	WONG KONG LEONG [SSH]	S/U		57,123	57,123		0.017		57,123	57,123	10.220
21 Jul 2023 (24 Jul 2023)	Biolidics	CLEARBRIDGE BSA PTE. LTD. [SSH]	S/U	-57,123		-57,123		0.017				
21 Jul 2023 (24 Jul 2023)	Biolidics	CLEARBRIDGE HEALTH LIMITED [SSH]	S/U		-57,123	-57,123		0.017				
21 Jul 2023 (24 Jul 2023)	MarcoPolo Marine	Teo Junxiang, Darren [Dir/CEO]	S/U	1,500		1,500	0.054	0.054	3,000	607,143	610,143	16.250
19 Jul 2023 (21 Jul 2023)	Asiatic	Tay Kah Chye [Dir/CEO]	R/O/W	2,080		2,080		0.002				
19 Jul 2023 (21 Jul 2023)	Asiatic	Tan Boon Siang [Dir/CEO]	R/O/W	182,302		182,302		0.002				
19 Jul 2023 (21 Jul 2023)	Asiatic	Tan Boon Kheng [Dir/CEO]	R/O/W	183,503		183,503		0.002				
19 Jul 2023 (21 Jul 2023)	ParkwayLife Reit	Cohen & Steers, Inc. [SSH]	S/U		145	145		3.670		42,450	42,450	7.020
17 Jul 2023 (21 Jul 2023)	IHH	EMPLOYEES PROVIDENT FUND BOARD [SSH]	S/U	3,000		3,000		1.690	903,344		903,344	10.257
19 Jul 2023 (20 Jul 2023)	SIA	Goh Choon Phong [Dir/CEO]	S/U,R/O/W	494		494		1.000	4,301		4,301	0.140
18 Jul 2023 (20 Jul 2023)	SIA	Goh Choon Phong [Dir/CEO]	R/O/W	74		74		1.001				
18 Jul 2023 (20 Jul 2023)	SIA	Goh Choon Phong [Dir/CEO]	R/O/W	111		111		1.001				
18 Jul 2023 (20 Jul 2023)	SIA	Goh Choon Phong [Dir/CEO]	R/O/W	180		180		1.001				
19 Jul 2023 (20 Jul 2023)	Aspial Corp	MLHS Holdings Pte Ltd [SSH]	S/U	43,305		43,305	0.067	0.073	1,203,887		1,203,887	54.160

Access WebPro to view more insider trades

Disclaimer: The information on this page is provided as a service to readers. It does not constitute financial advice and/or any investment recommendations. Past performance is not indicative of future results. We assume no liability for damages resulting from or arising out of the use of such information. It would be best if you did your own research to make your personal investment decisions wisely or consult a licenced investment advisor.



# IR Announcements



## Sabana Industrial REIT: 1H 2023 Distributable Income Rose By 3.9% To \$17.8 Million, Resilient Performance Backed By Strong Operational Performance.

Overall portfolio occupancy of 93.9% at a multi-year high, above JTC's 1Q 2023 industrial average. Executed 40 new and renewed leases in 1H 2023 totalling approximately 533,656 sq ft. Achieved record rental reversions of 27.1% and 20.1% for 2Q 2023 and 1H 2023, respectively. Consistently among the highest within the Singapore industrial REIT sector. Second major asset enhancement initiative at 1 Tuas Avenue 4 on track to be completed in 1H 2024. Portfolio valuation improved to \$887.5 million, supported by higher rentals.

<http://sabana.listedcompany.com/news.html/id/2448516>

## Ascott: Furthers Partnership With GSTC To Spearhead Industry-Wide Training Programmes In Support Of Singapore's Hotel Sustainability Roadmap.

Training programmes will propel industry stakeholders forward in line with the national goal to have at least 60% of all hotel room stock achieve internationally-recognised sustainability certifications by 2025.

<http://cli.listedcompany.com/news.html/id/2448600>



## Qian Hu: Posts Lower 1H23 Net Profit.

Qian Hu Corporation Limited's profit attributable to shareholders for the first half of FY2023 ended 30 June dipped 96.4% to \$29,749. This was on the back of Group revenue retreating by 9.9% to \$34.3 million, from weakening procurement sentiments of its customers around the world, which deeply affected the Group's Fish and Accessories exports, and the reduction in handling income from Aquaculture transshipments.

<http://qianhu.listedcompany.com/news.html/id/2448467>

## EuroSports Global: Scorpio Electric X1 Milestone Update.

Scorpio Electric Pte. Ltd announced a significant milestone achieved for its highly anticipated electric motorcycle, the Scorpio Electric X1, during the Nexus Europe 2023 conference held in Madrid, Spain. The Nexus Europe 2023 is an inaugural congregation for European business partners to understand more about the brand, engineering advancements and future product roadmap as the X1 undergoes the final stages of development.

<http://eurosportsglobal.listedcompany.com/news.html/id/2448393>



Learn how to identify Hot Stocks using Technical Analysis (TA) and Fundamental Analysis (FA)



# SIGN UP FOR Invest NOW

Click Here

Get market-moving news and analysis. Regular columns include **Behind The Action** and **From The Observer**

It's FREE!!

Leaderboard • Hot Stocks • Momentum Up Stocks • Uptrending Stocks  
Value Stocks • Growth Stocks • Dividend Stocks • Insider Trade  
Investor Relations • Regional Markets

Scan or click me



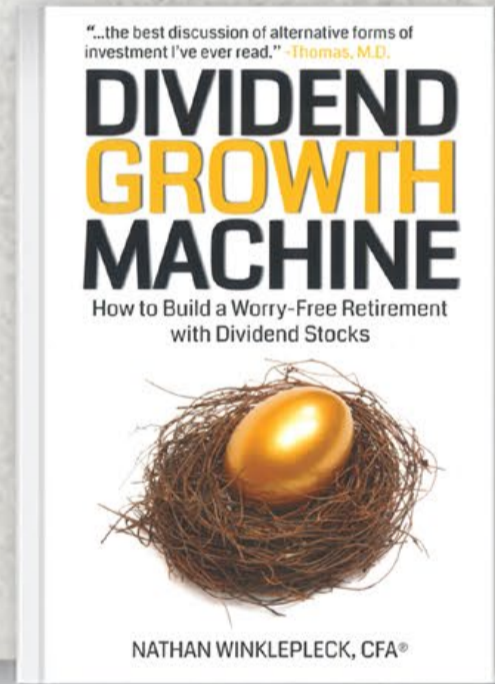
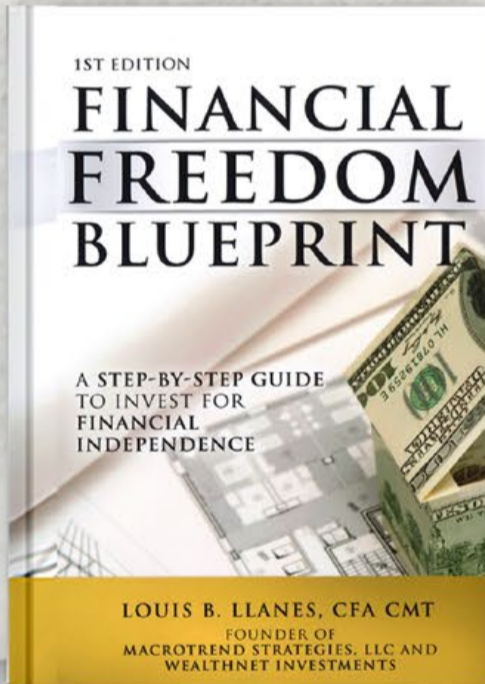
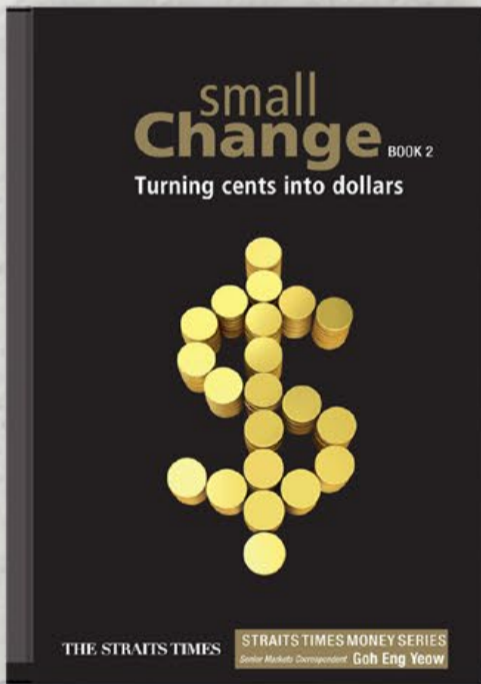
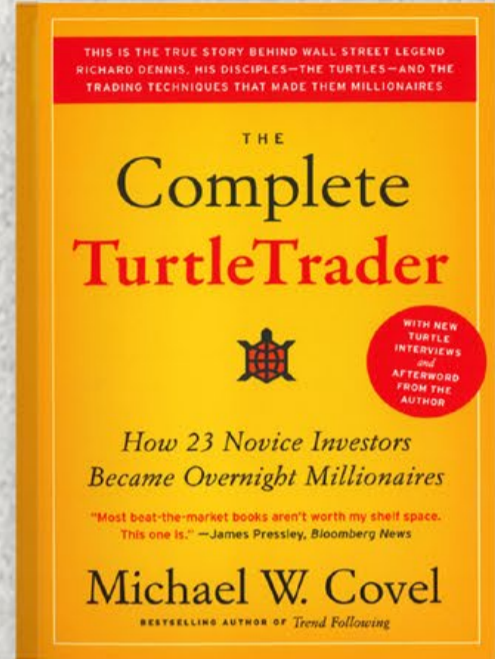
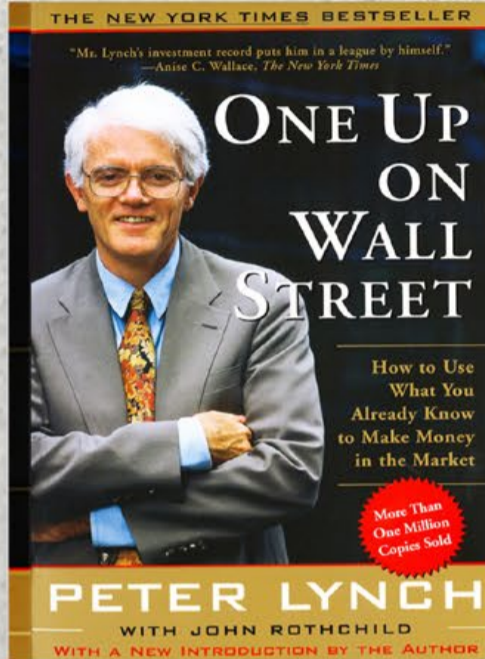
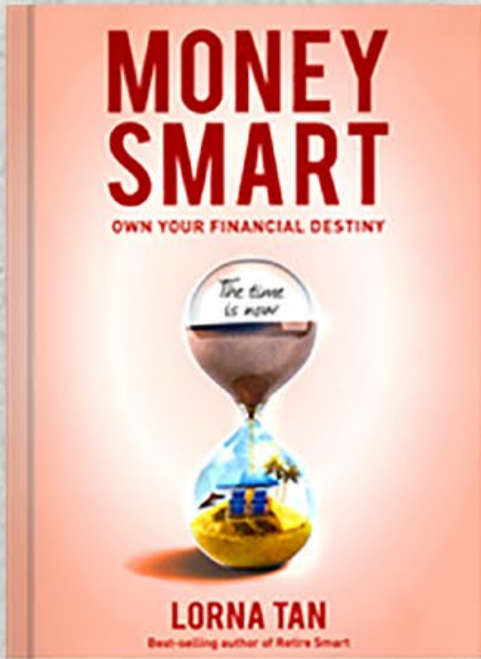
Via email, weekly



INVESTMENT BOOKS

Click on book for more details

INVESTMENT BOOKS



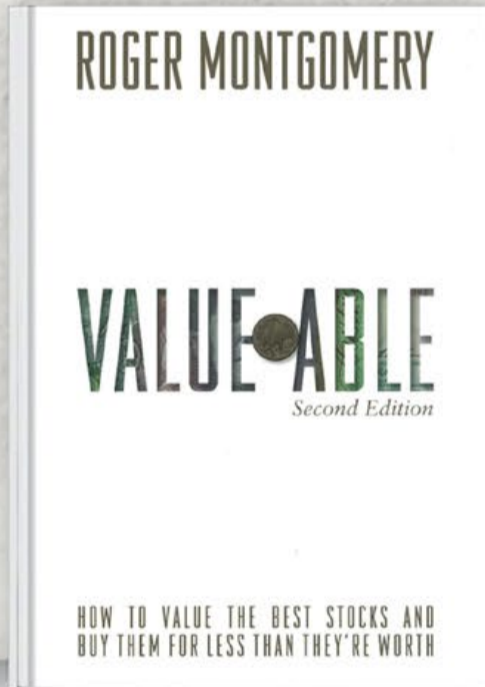
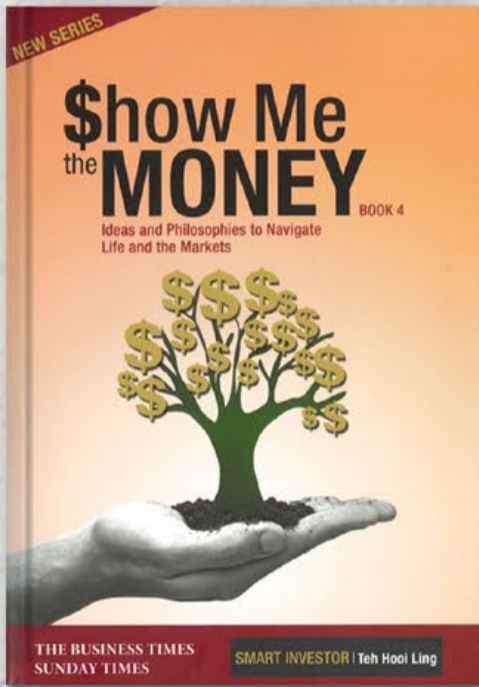
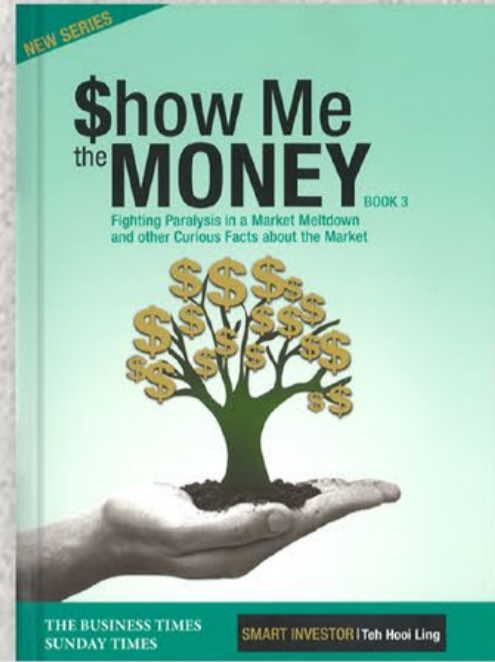
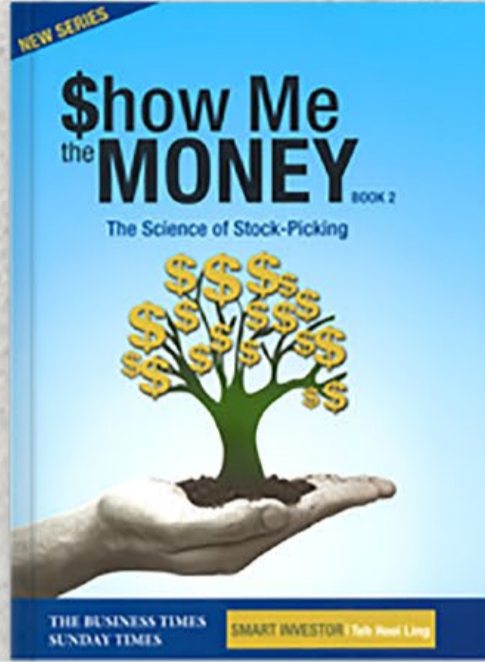
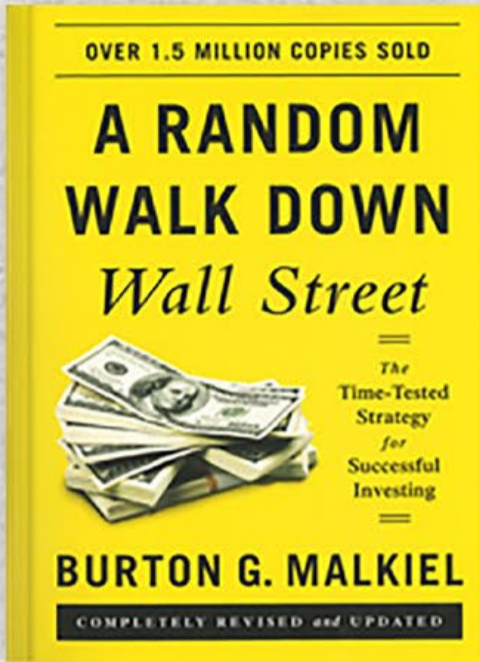
View more Books >



INVESTMENT BOOKS

Click on book for more details

INVESTMENT BOOKS



View more Books >